

Virkestatistikk fra

SKOG-DATA AS

Vest-Agder m/kommuner

Dataene i rapporten er hentet fra databasen som inneholder virkesdata med tilhørende innbetalinger av skogavgift. Rapporten er laget med Business Objects, som er sluttbrukerverktøyet i Skog-Data sine nye datavarehus-løsninger. Business Objects er ett meget sterkt rapportverktøy som kan presentere store mengder data effektivt.

Rapportene kan lastes ned fra www.skogdata.no/statistikk

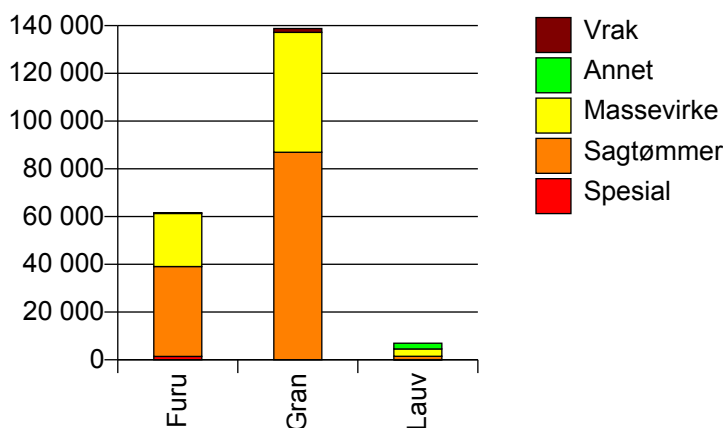
For mer informasjon, kontakt: tabh@skogdata.no

Vest-Agder

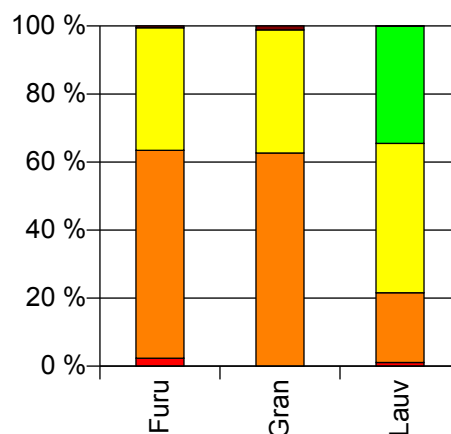
Volum 2010

	Spesial	Sagtømmer	Massevirke	Annet	Vrak	Sum:
Furu	1 429	37 676	22 221		326	61 652
Gran		86 974	50 200		1 622	138 796
Lauv	74	1 426	3 050	2 392	5	6 947
Sum:	1 503	126 076	75 471	2 392	1 953	207 395

Volum (kbm)



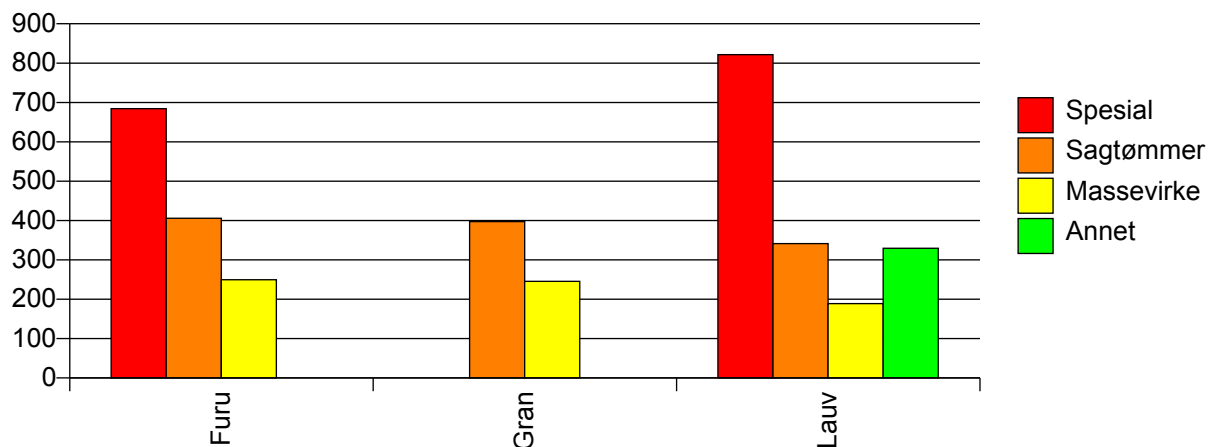
Volum (prosentfordelt)



Gjennomsnittspris 2010 (kr/kbm)

	Spesial	Sagtømmer	Massevirke	Annet	Vrak	Snitt:
Furu	684	406	250		0	354
Gran		397	245		0	338
Lauv	821	341	189	330	0	275
Snitt:	691	399	244	330	0	340

Gjennomsnittspris (kr/kbm)

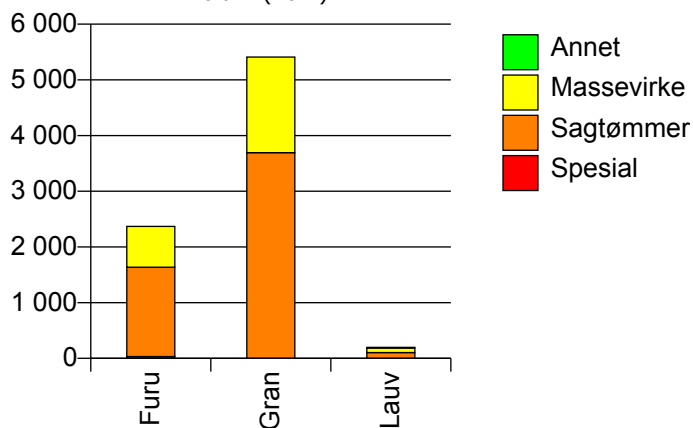


1026 ÅSERAL

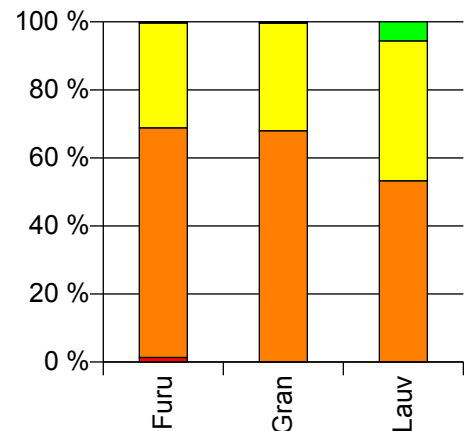
Volum 2010 (kbm)

	Spesial	Sagtømmer	Massevirke	Annet	Vrak	Sum:
Furu	32	1 605	733		8	2 378
Gran		3 692	1 718		21	5 431
Lauv		105	81	11		197
Sum:	32	5 402	2 532	11	29	8 006

Volum (kbm)



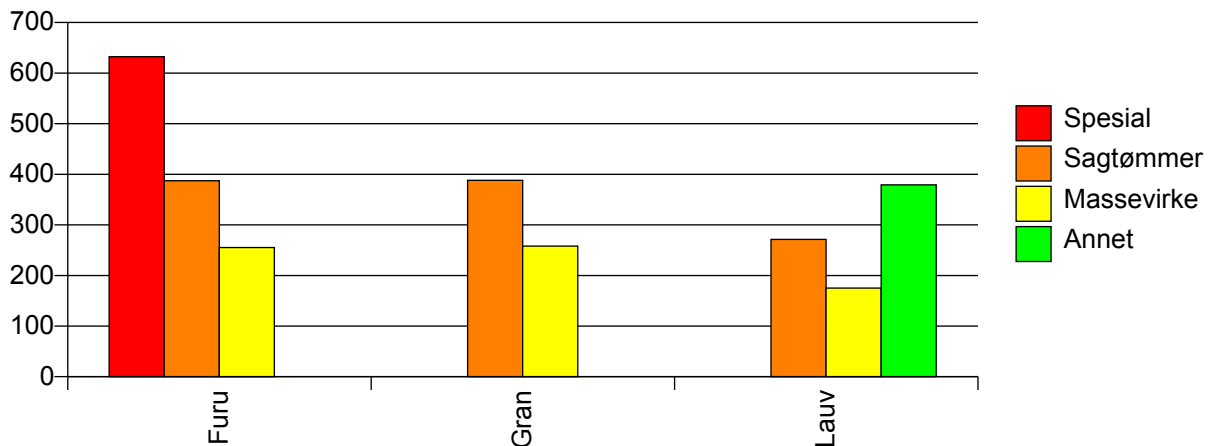
Volum (prosentfordelt)



Gjennomsnittspris 2010 (kr/kbm)

	Spesial	Sagtømmer	Massevirke	Annet	Vrak	Snitt
Furu	632	387	255		0	349
Gran		388	258		0	346
Lauv		271	175	379		238
Snitt	632	386	255	379	0	344

Gjennomsnittspris (kr/kbm)

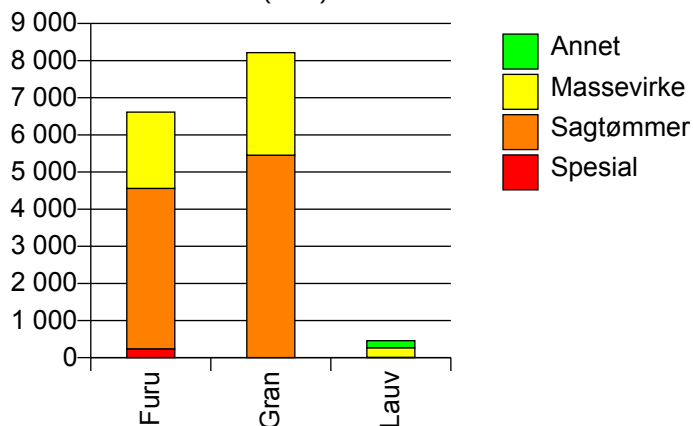


1027 AUDNEDAL

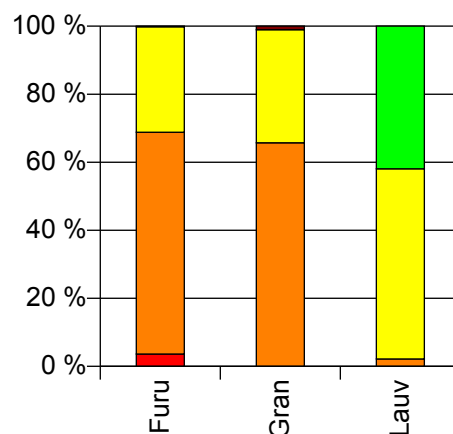
Volum 2010 (kbm)

	Spesial	Sagtømmer	Massevirke	Annet	Vrak	Sum:
Furu	239	4 319	2 054		12	6 624
Gran		5 455	2 760		86	8 301
Lauv		10	256	192		458
Sum:	239	9 784	5 070	192	98	15 383

Volum (kbm)



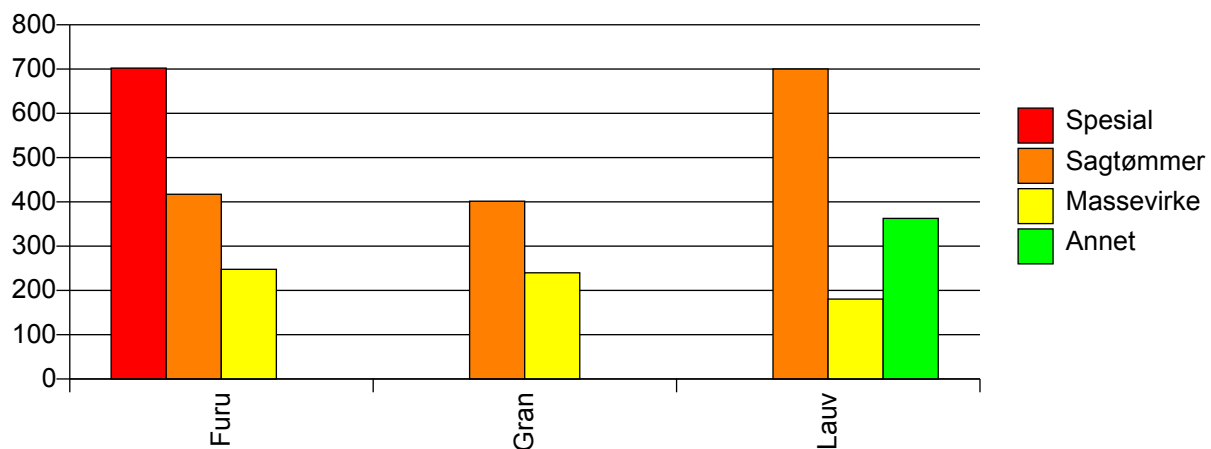
Volum (prosentfordelt)



Gjennomsnittspris 2010 (kr/kbm)

	Spesial	Sagtømmer	Massevirke	Annet	Vrak	Snitt
Furu	702	417	248		0	374
Gran		402	240		0	344
Lauv		700	180	363		268
Snitt	702	409	240	363	0	355

Gjennomsnittspris (kr/kbm)

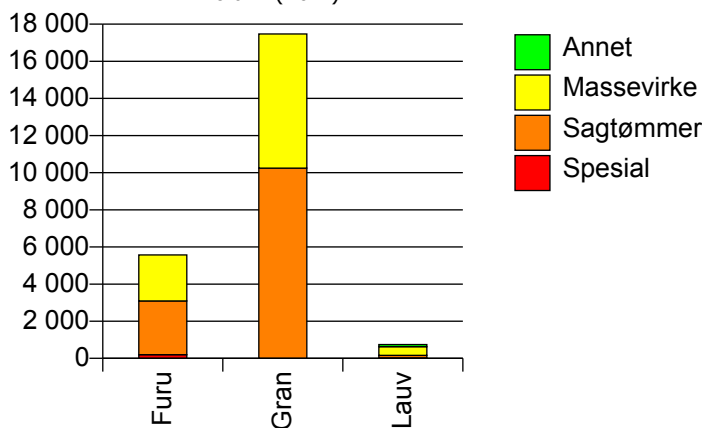


1029 LINDESNES

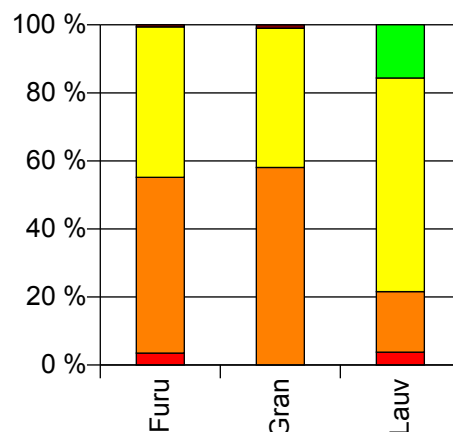
Volum 2010 (kbm)

	Spesial	Sagtømmer	Massevirke	Annet	Vrak	Sum:
Furu	197	2 892	2 478		33	5 600
Gran		10 246	7 225		173	17 644
Lauv	28	132	466	116	0	742
Sum:	225	13 270	10 169	116	206	23 986

Volum (kbm)



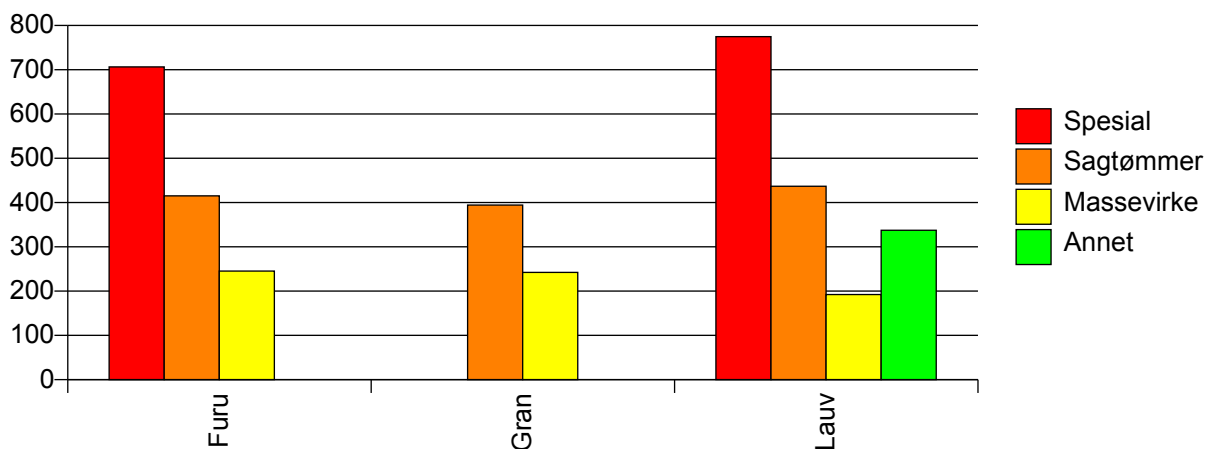
Volum (prosentfordelt)



Gjennomsnittspris 2010 (kr/kbm)

	Spesial	Sagtømmer	Massevirke	Annet	Vrak	Snitt
Furu	706	415	245		0	348
Gran		394	242		0	328
Lauv	775	437	192	337	#DIV/0	281
Snitt	715	399	241	337	0	331

Gjennomsnittspris (kr/kbm)

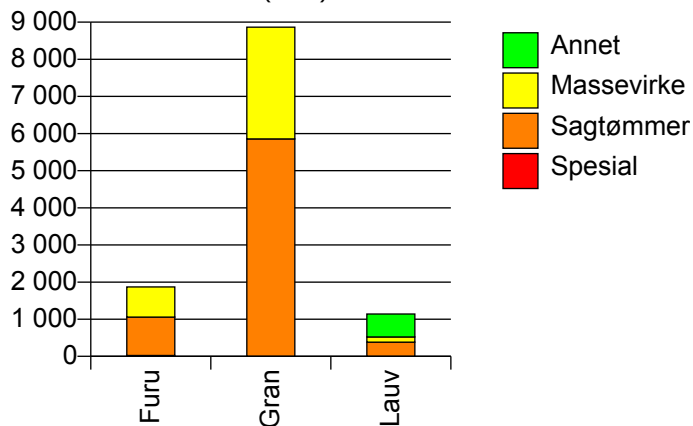


1032 LYNGDAL

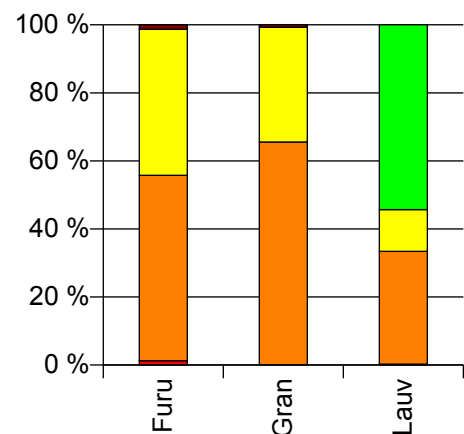
Volum 2010 (kbm)

	Spesial	Sagtømmer	Massevirke	Annet	Vrak	Sum:
Furu	24	1 032	813		25	1 894
Gran		5 854	3 011		66	8 931
Lauv	3	378	140	619		1 140
Sum:	27	7 264	3 964	619	91	11 965

Volum (kbm)



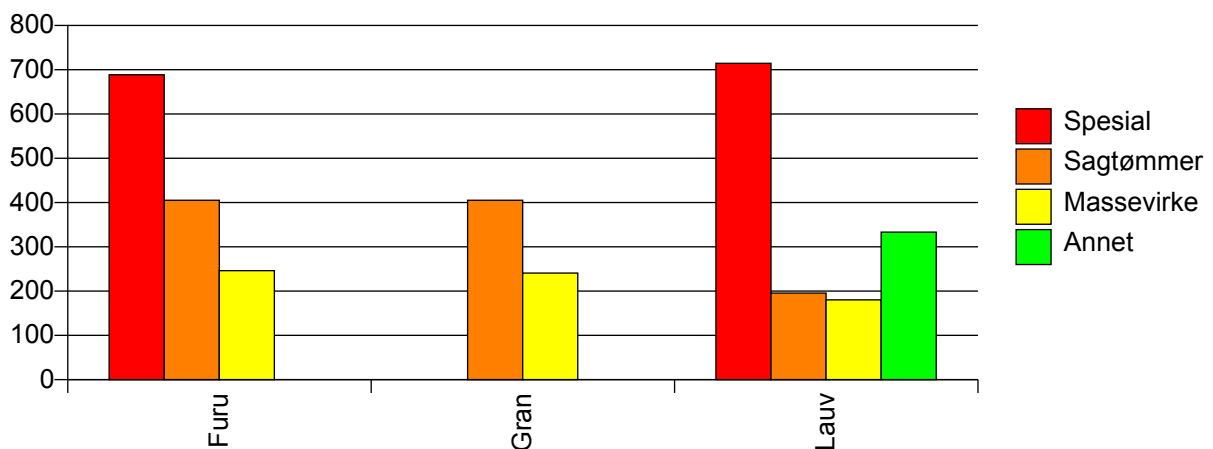
Volum (prosentfordelt)



Gjennomsnittspris 2010 (kr/kbm)

	Spesial	Sagtømmer	Massevirke	Annet	Vrak	Snitt
Furu	689	405	246		0	335
Gran		405	241		0	347
Lauv	715	196	180	333		270
Snitt	692	394	240	333	0	338

Gjennomsnittspris (kr/kbm)

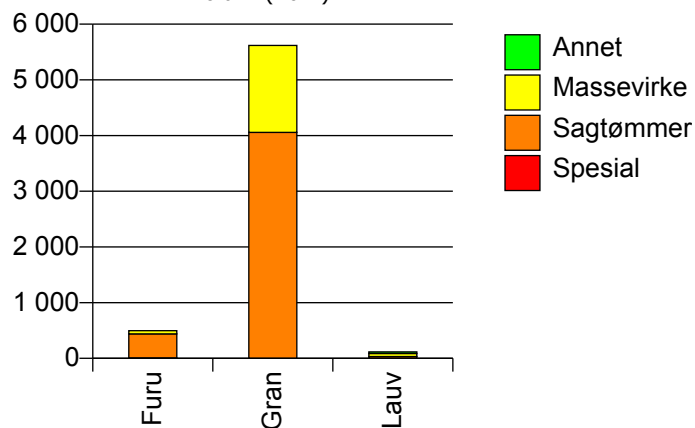


1034 HÆGEBOSTAD

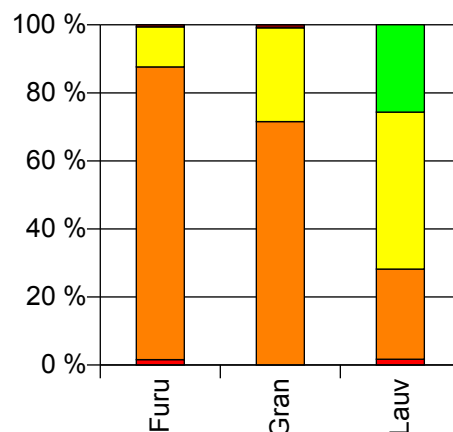
Volum 2010 (kbm)

	Spesial	Sagtømmer	Massevirke	Annet	Vrak	Sum:
Furu	8	431	59		3	501
Gran		4 056	1 562		51	5 669
Lauv	2	31	54	30		117
Sum:	10	4 518	1 675	30	54	6 287

Volum (kbm)



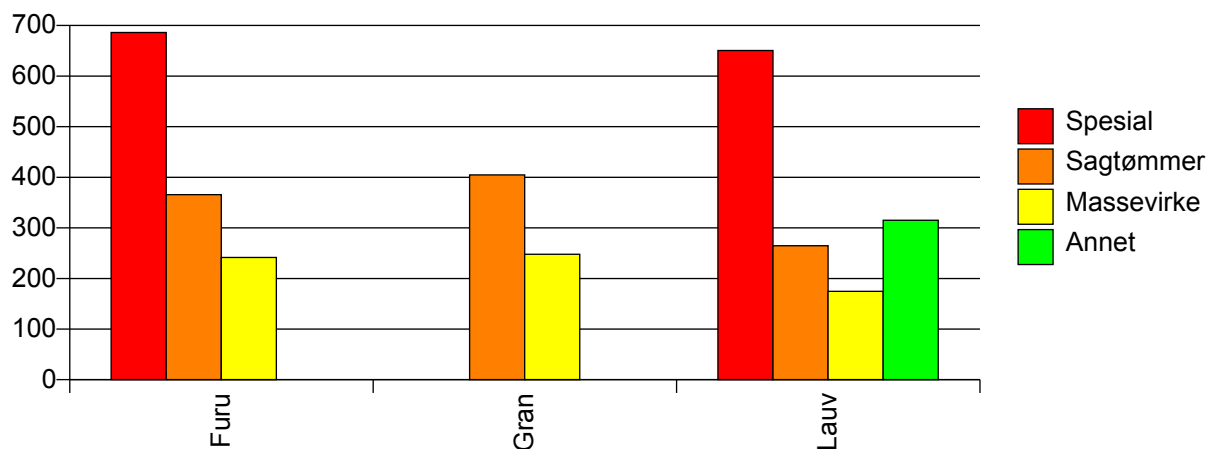
Volum (prosentfordelt)



Gjennomsnittspris 2010 (kr/kbm)

	Spesial	Sagtømmer	Massevirke	Annet	Vrak	Snitt
Furu	686	366	242		0	354
Gran		405	248		0	358
Lauv	651	265	175	315		243
Snitt	679	400	245	315	0	355

Gjennomsnittspris (kr/kbm)

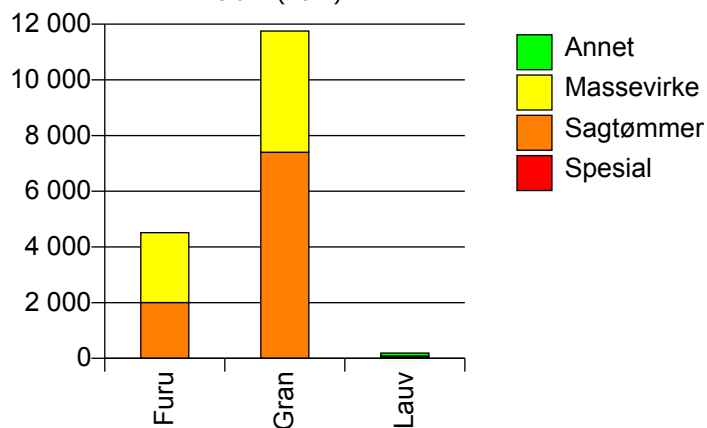


1037 KVINESDAL

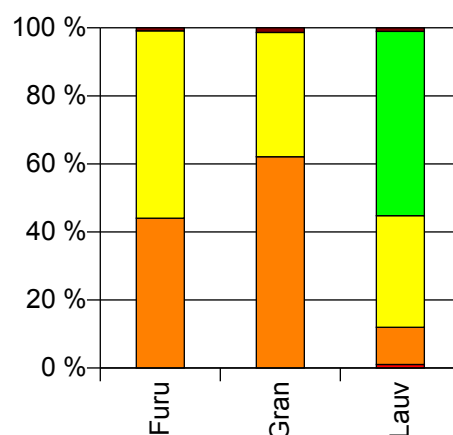
Volum 2010 (kbm)

	Spesial	Sagtømmer	Massevirke	Annet	Vrak	Sum:
Furu		2 005	2 506		41	4 552
Gran		7 399	4 356		160	11 915
Lauv	2	21	63	104	2	192
Sum:	2	9 425	6 925	104	203	16 659

Volum (kbm)



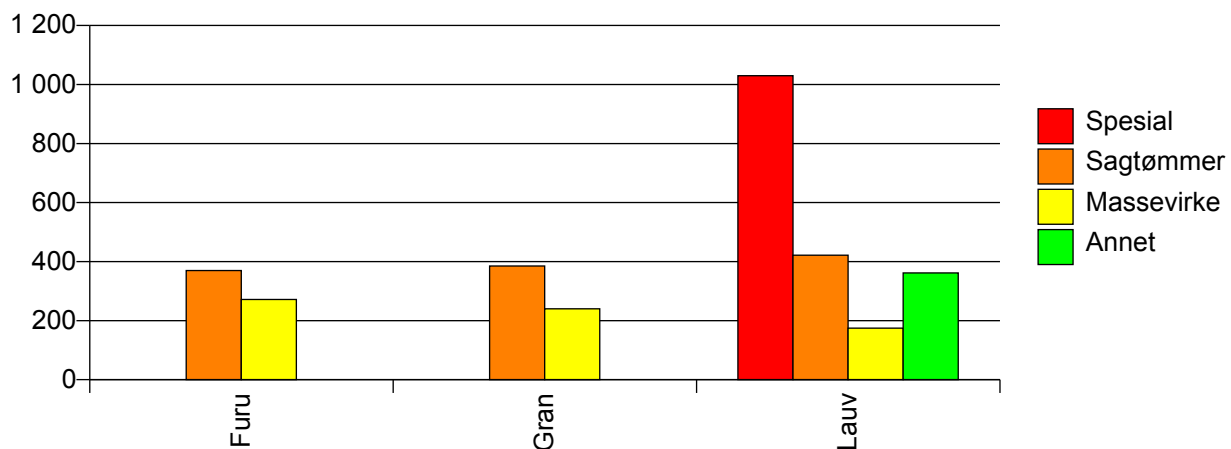
Volum (prosentfordelt)



Gjennomsnittspris 2010 (kr/kbm)

	Spesial	Sagtømmer	Massevirke	Annet	Vrak	Snitt
Furu		370	272		0	313
Gran		385	240		0	327
Lauv	1 030	422	175	361	0	310
Snitt	1 030	382	251	361	0	323

Gjennomsnittspris (kr/kbm)

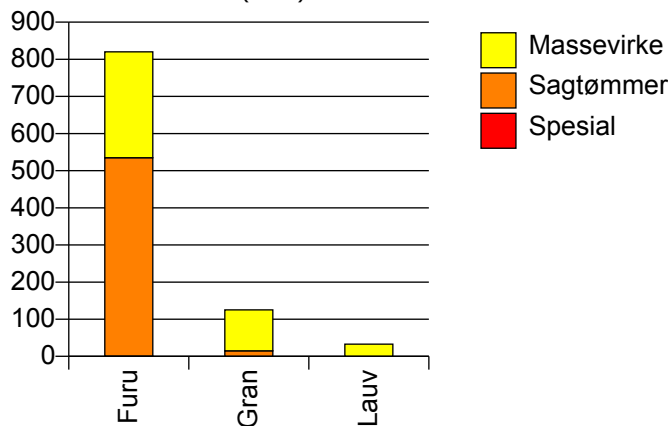


1046 SIRDAL

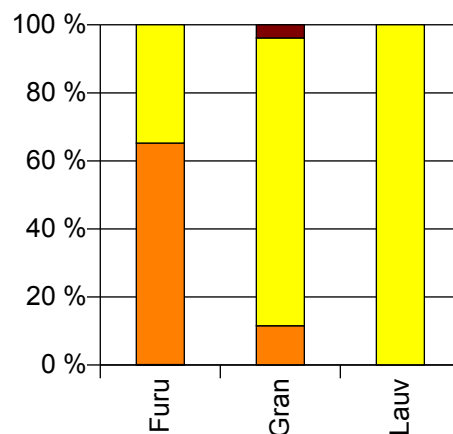
Volum 2010 (kbm)

	Spesial	Sagtømmer	Massevirke	Vrak	Sum:
Furu	1	534	285		820
Gran		15	110	5	130
Lauv			33		33
Sum:	1	549	428	5	983

Volum (kbm)



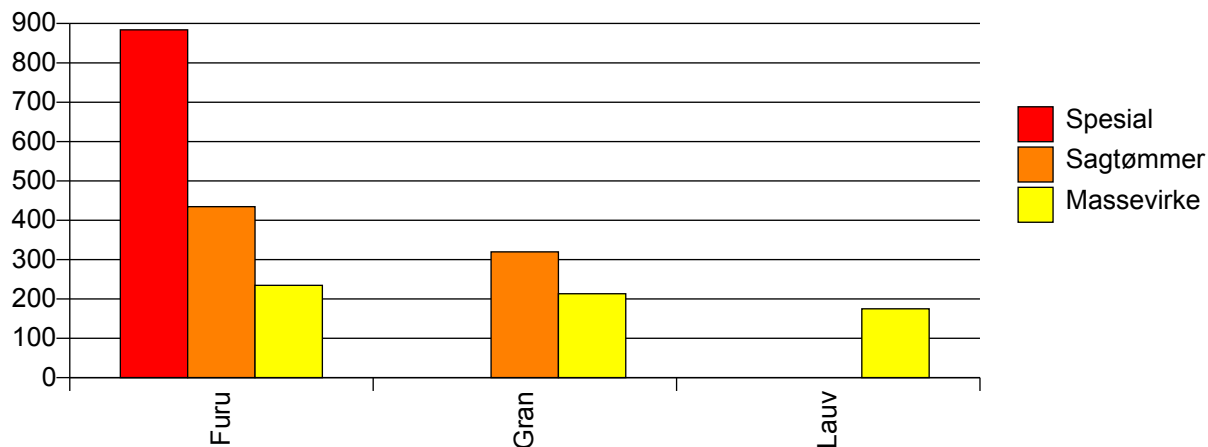
Volum (prosentfordelt)



Gjennomsnittspris 2010 (kr/kbm)

	Spesial	Sagtømmer	Massevirke	Vrak	Snitt
Furu	884	435	235		366
Gran		320	213	0	217
Lauv			175		175
Snitt	884	431	225	0	340

Gjennomsnittspris (kr/kbm)

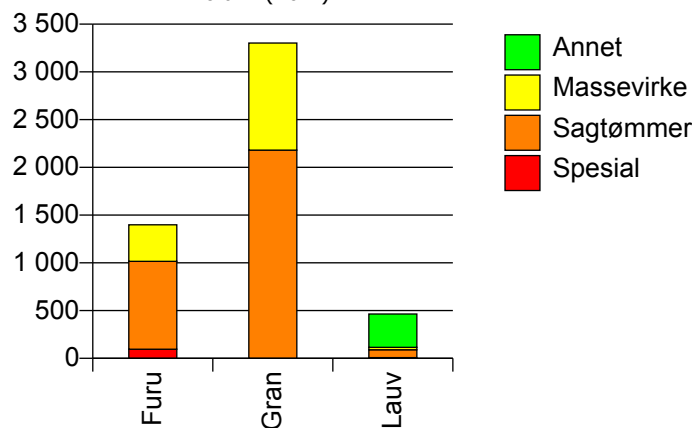


1001 KRISTIANSAND

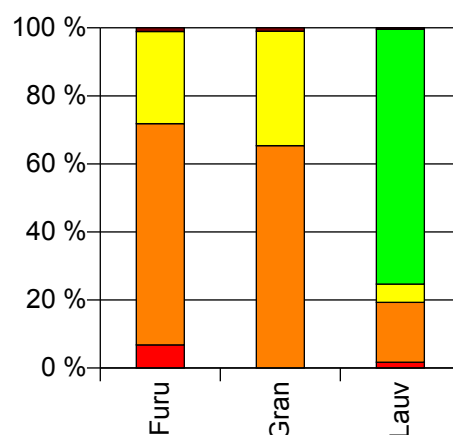
Volum 2010 (kbm)

	Spesial	Sagtømmer	Massevirke	Annet	Vrak	Sum:
Furu	96	920	383		15	1 414
Gran		2 181	1 122		33	3 336
Lauv	8	82	25	349	2	466
Sum:	104	3 183	1 530	349	50	5 216

Volum (kbm)



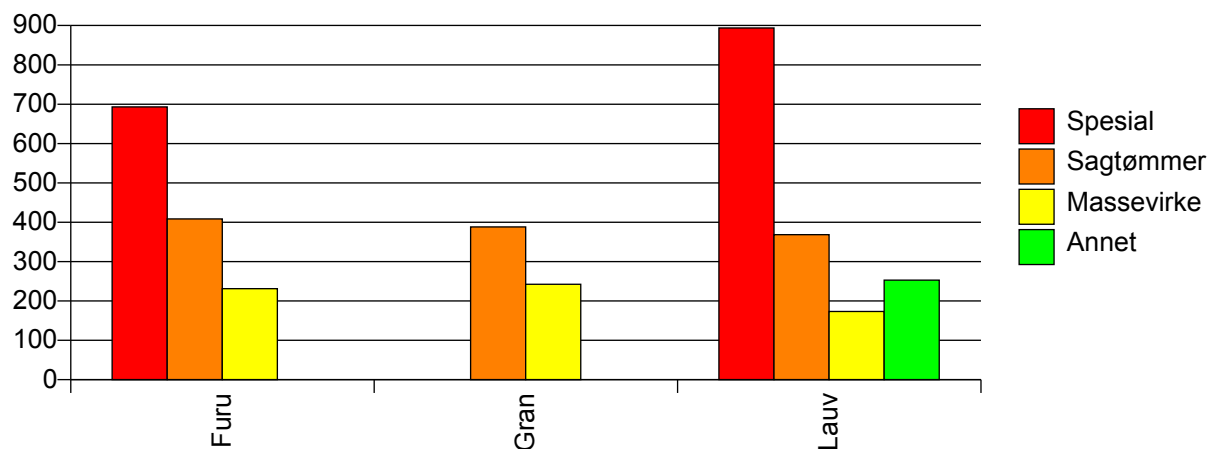
Volum (prosentfordelt)



Gjennomsnittspris 2010 (kr/kbm)

	Spesial	Sagtømmer	Massevirke	Annet	Vrak	Snitt
Furu	693	409	231		0	376
Gran		388	243		0	335
Lauv	894	368	173	253	0	279
Snitt	708	394	239	253	0	341

Gjennomsnittspris (kr/kbm)

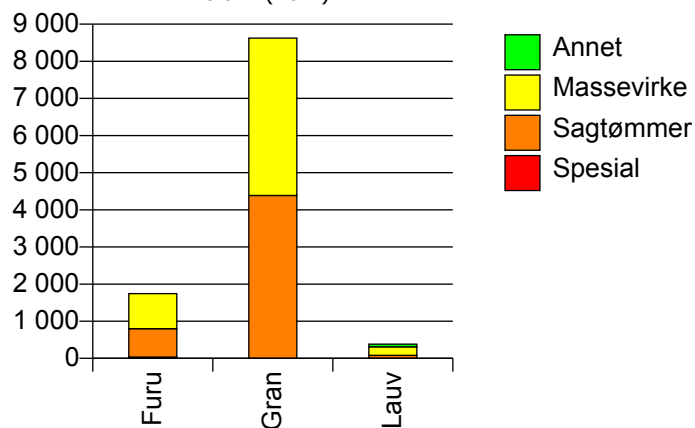


1002 MANDAL

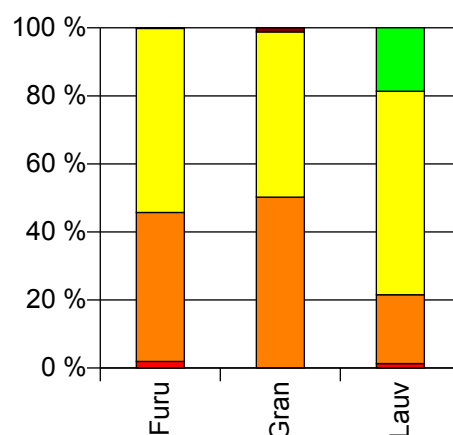
Volum 2010 (kbm)

	Spesial	Sagtømmer	Massevirke	Annet	Vrak	Sum:
Furu	34	765	945		3	1 747
Gran		4 386	4 240		104	8 730
Lauv	5	77	228	71		381
Sum:	39	5 228	5 413	71	107	10 858

Volum (kbm)



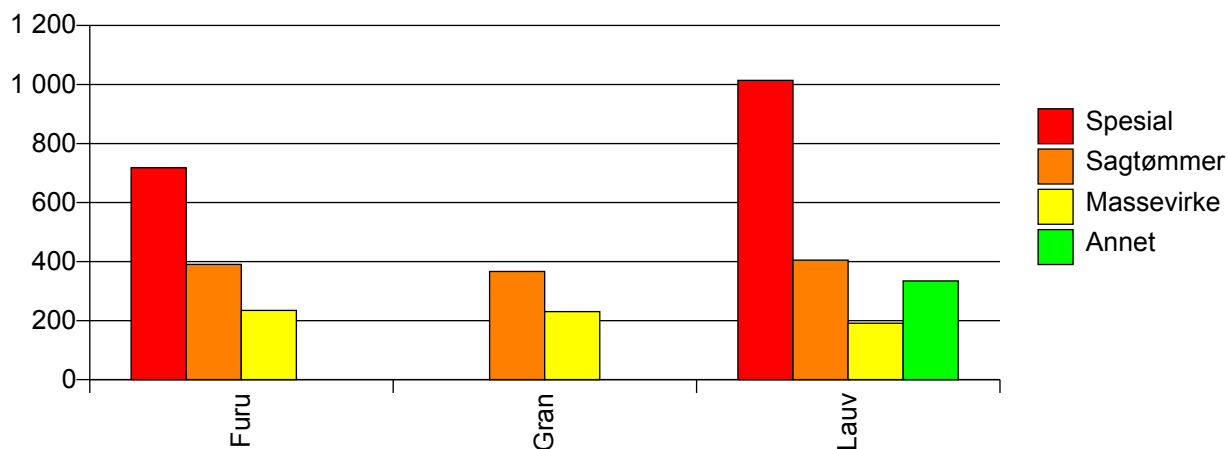
Volum (prosentfordelt)



Gjennomsnittspris 2010 (kr/kbm)

	Spesial	Sagtømmer	Massevirke	Annet	Vrak	Snitt
Furu	718	390	235		0	312
Gran		367	230		0	296
Lauv	1 014	405	191	335		272
Snitt	756	371	230	335	0	298

Gjennomsnittspris (kr/kbm)

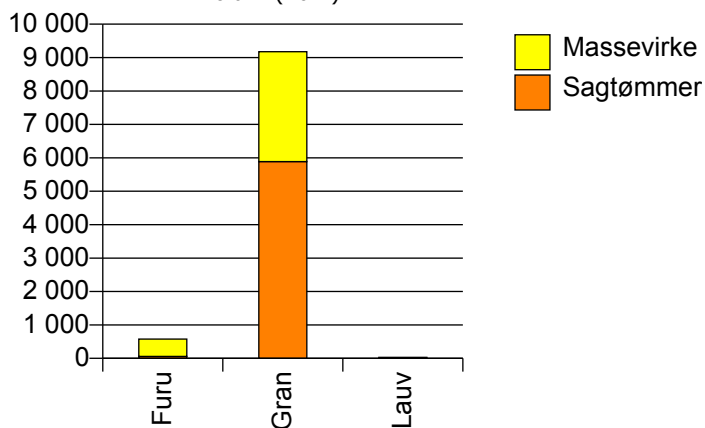


1003 FARSUND

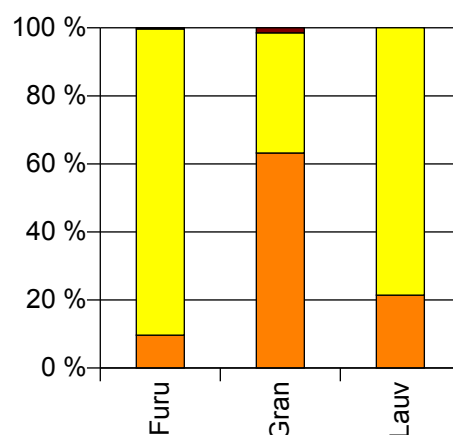
Volum 2010 (kbm)

	Sagtømmer	Massevirke	Vrak	Sum:
Furu	56	521	2	579
Gran	5 888	3 289	138	9 315
Lauv	6	22		28
Sum:	5 950	3 832	140	9 922

Volum (kbm)



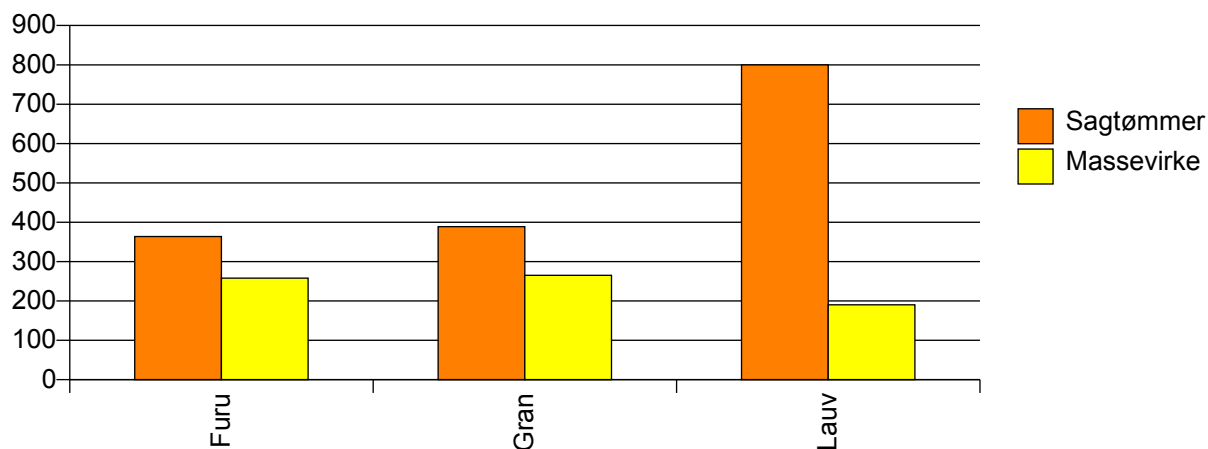
Volum (prosentfordelt)



Gjennomsnittspris 2010 (kr/kbm)

	Sagtømmer	Massevirke	Vrak	Snitt
Furu	364	258	0	267
Gran	389	265	0	340
Lauv	800	190		321
Snitt	389	264	0	335

Gjennomsnittspris (kr/kbm)

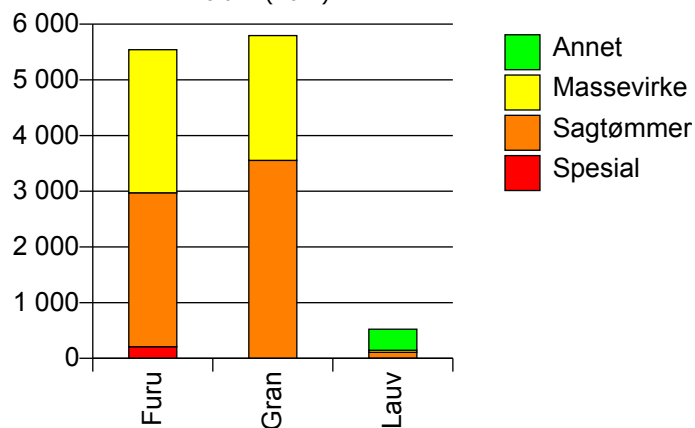


1004 FLEKKEFJORD

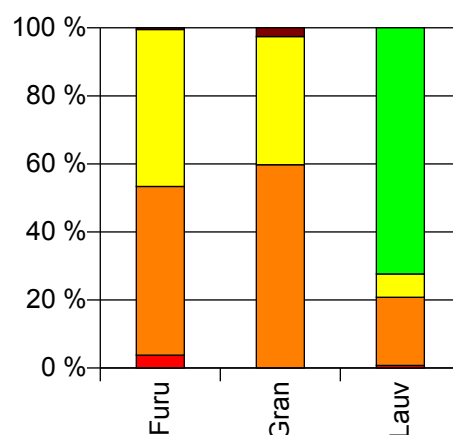
Volum 2010 (kbm)

	Spesial	Sagtømmer	Massevirke	Annet	Vrak	Sum:
Furu	210	2 762	2 569		27	5 568
Gran		3 555	2 241		153	5 949
Lauv	4	105	36	379	0	524
Sum:	214	6 422	4 846	379	180	12 041

Volum (kbm)



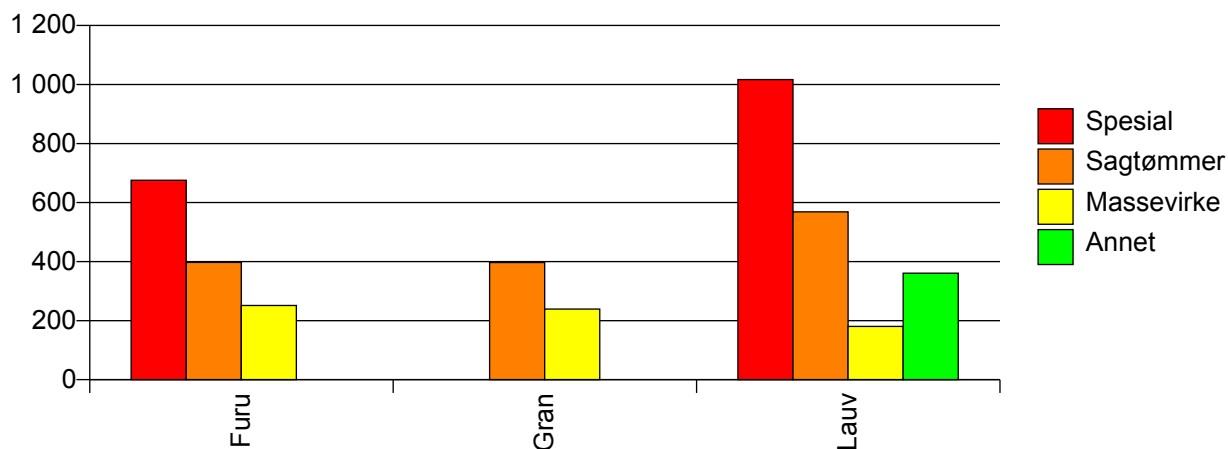
Volum (prosentfordelt)



Gjennomsnittspris 2010 (kr/kbm)

	Spesial	Sagtømmer	Massevirke	Annet	Vrak	Snitt
Furu	676	397	251		0	339
Gran		397	239		0	327
Lauv	1 017	568	180	361	#DIV/0	395
Snitt	682	400	245	361	0	336

Gjennomsnittspris (kr/kbm)

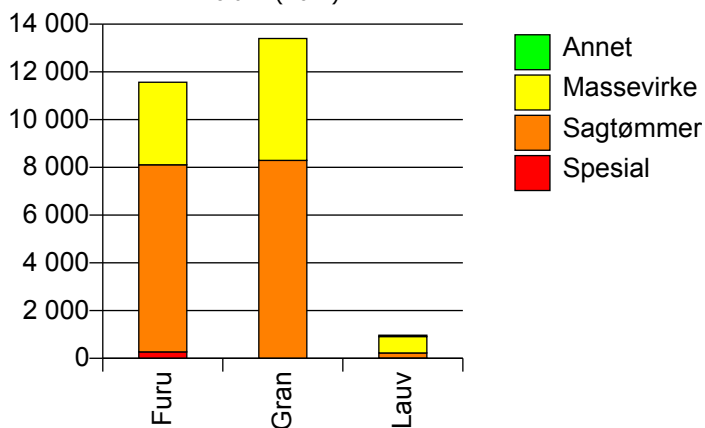


1014 VENNESLA

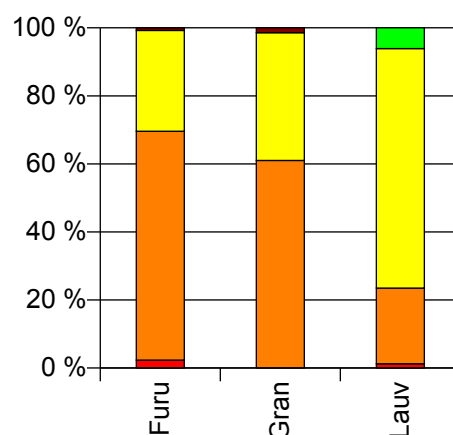
Volum 2010 (kbm)

	Spesial	Sagtømmer	Massevirke	Annet	Vrak	Sum:
Furu	271	7 839	3 456		88	11 654
Gran		8 296	5 101		196	13 593
Lauv	12	216	683	59	0	970
Sum:	283	16 351	9 240	59	284	26 217

Volum (kbm)



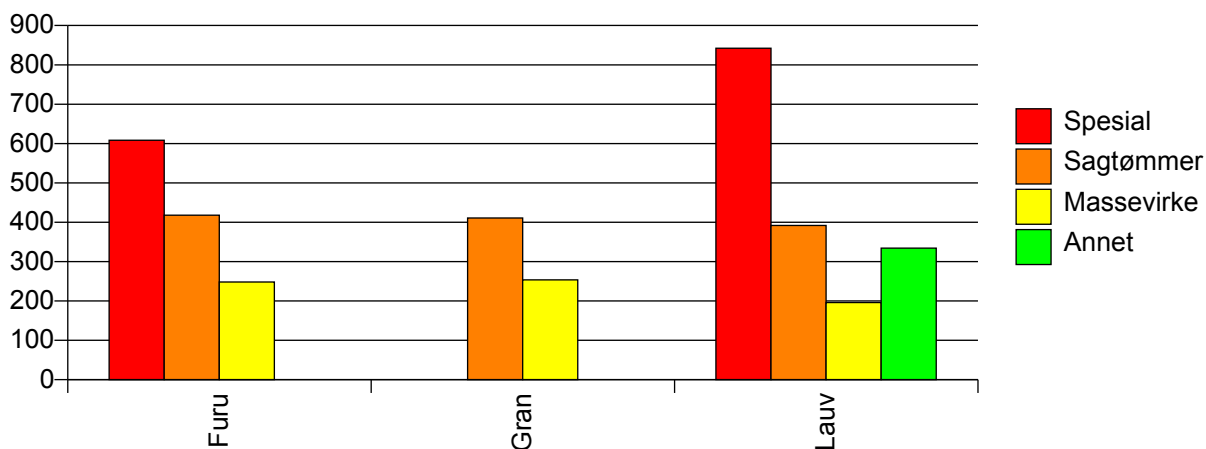
Volum (prosentfordelt)



Gjennomsnittspris 2010 (kr/kbm)

	Spesial	Sagtømmer	Massevirke	Annet	Vrak	Snitt
Furu	609	418	248		0	369
Gran		411	253		0	346
Lauv	842	392	196	334	#DIV/0	256
Snitt	618	414	247	334	0	353

Gjennomsnittspris (kr/kbm)

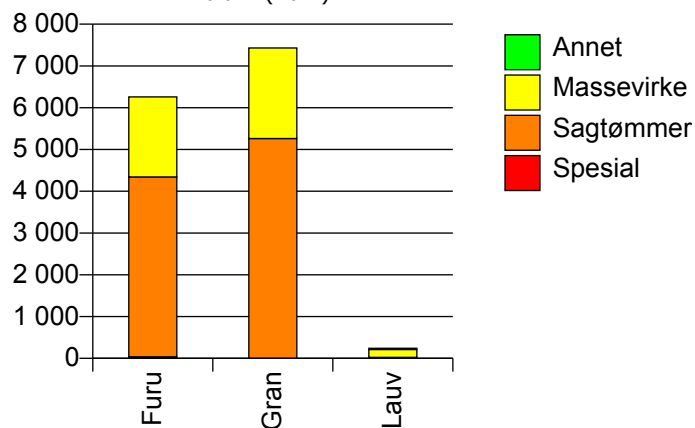


1017 SONGDALEN

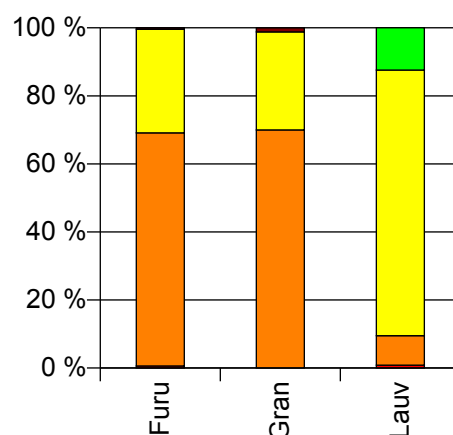
Volum 2010 (kbm)

	Spesial	Sagtømmer	Massevirke	Annet	Vrak	Sum:
Furu	37	4 305	1 915		25	6 282
Gran		5 264	2 166		91	7 521
Lauv	2	21	189	30		242
Sum:	39	9 590	4 270	30	116	14 045

Volum (kbm)



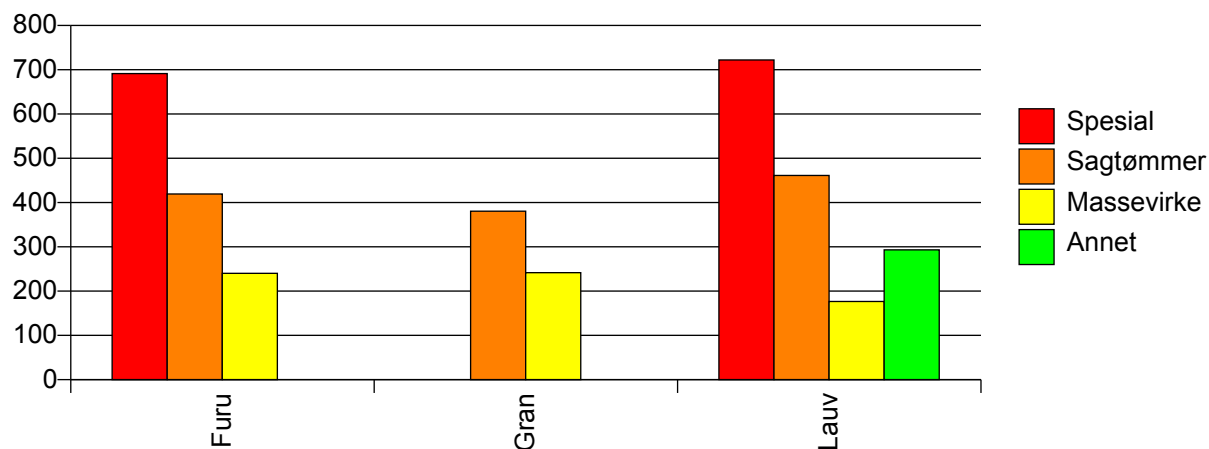
Volum (prosentfordelt)



Gjennomsnittspris 2010 (kr/kbm)

	Spesial	Sagtømmer	Massevirke	Annet	Vrak	Snitt
Furu	691	420	240		0	365
Gran		381	242		0	336
Lauv	722	461	177	293		220
Snitt	693	398	238	293	0	347

Gjennomsnittspris (kr/kbm)

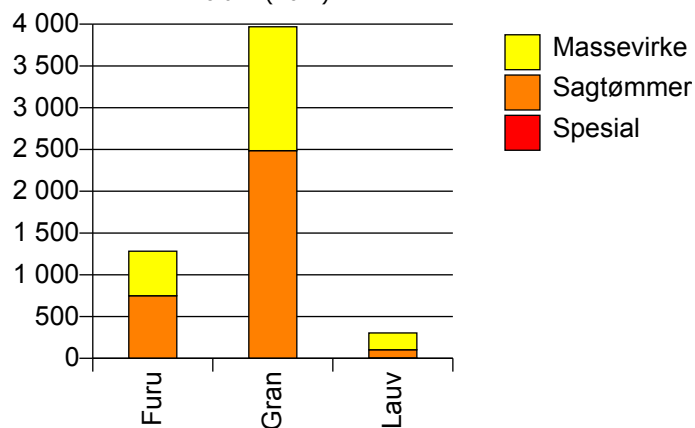


1018 SØGNE

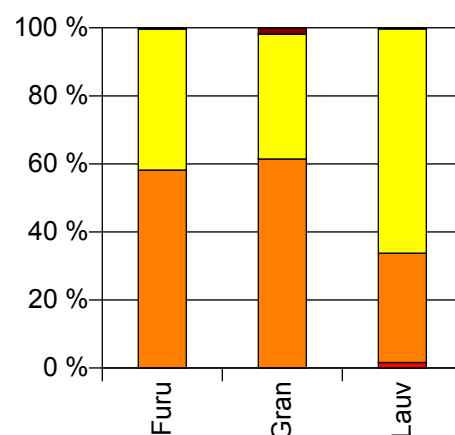
Volum 2010 (kbm)

	Spesial	Sagtømmer	Massevirke	Vrak	Sum:
Furu		749	533	5	1 287
Gran		2 486	1 483	76	4 045
Lauv	5	98	201	1	305
Sum:	5	3 333	2 217	82	5 637

Volum (kbm)



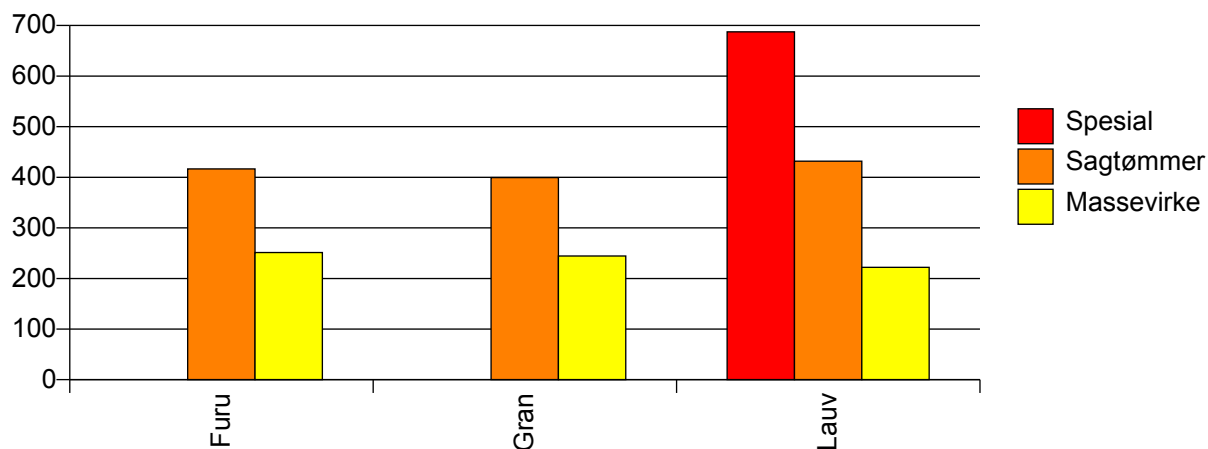
Volum (prosentfordelt)



Gjennomsnittspris 2010 (kr/kbm)

	Spesial	Sagtømmer	Massevirke	Vrak	Snitt
Furu		416	251	0	346
Gran		399	244	0	335
Lauv	688	432	222	0	296
Snitt	688	404	244	0	336

Gjennomsnittspris (kr/kbm)

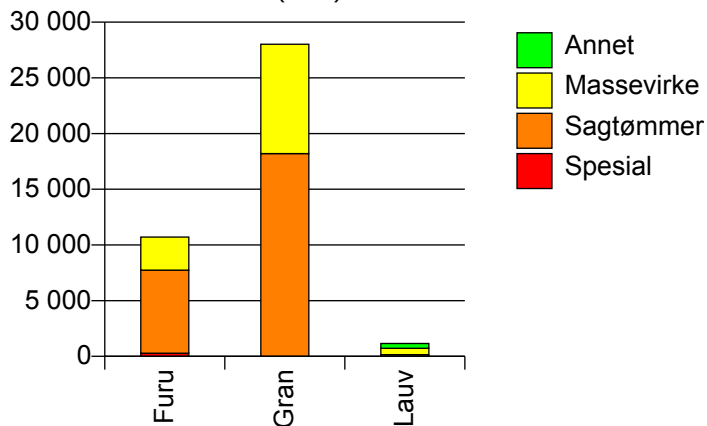


1021 MARNARDAL

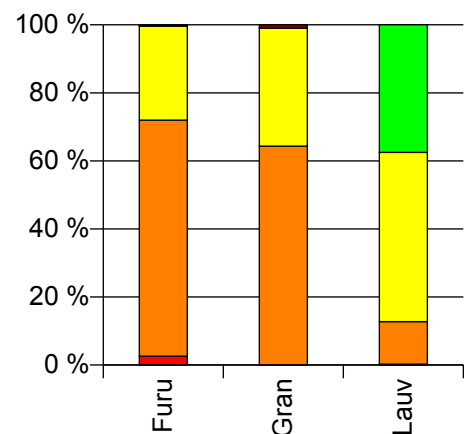
Volum 2010 (kbm)

	Spesial	Sagtømmer	Massevirke	Annet	Vrak	Sum:
Furu	280	7 462	2 971		39	10 752
Gran		18 201	9 816		269	28 286
Lauv	3	144	573	432	0	1 152
Sum:	283	25 807	13 360	432	308	40 190

Volum (kbm)



Volum (prosentfordelt)



Gjennomsnittspris 2010 (kr/kbm)

	Spesial	Sagtømmer	Massevirke	Annet	Vrak	Snitt
Furu	730	392	249		0	359
Gran		410	249		0	350
Lauv	771	279	181	336	#DIV/0	253
Snitt	730	404	246	336	0	350

Gjennomsnittspris (kr/kbm)

