

Virkestatistikk fra

SKOG-DATA AS

Nord-Trøndelag m/kommuner

Dataene i rapporten er hentet fra databasen som inneholder virkesdata med tilhørende innbetalinger av skogavgift. Rapporten er laget med Business Objects, som er sluttbrukerverktøyet i Skog-Data sine nye datavarehus-løsninger. Business Objects er ett meget sterkt rapportverktøy som kan presentere store mengder data effektivt.

Rapportene kan lastes ned fra www.skogdata.no/statistikk

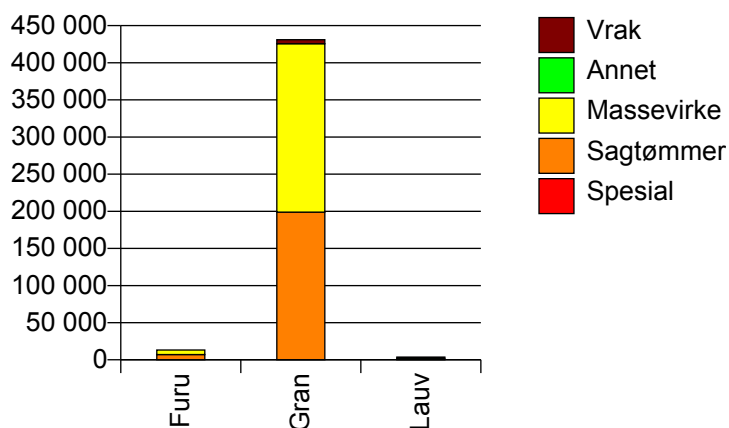
For mer informasjon, kontakt: tabh@skogdata.no

Nord-Trøndelag

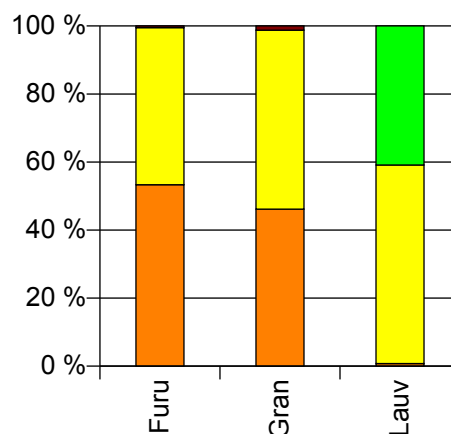
Volum 2010

	Spesial	Sagtømmer	Massevirke	Annet	Vrak	Sum:
Furu		7 061	6 114		65	13 240
Gran	57	198 905	226 776		5 266	431 004
Lauv		28	2 124	1 488		3 640
Sum:	57	205 994	235 014	1 488	5 331	447 884

Volum (kbm)



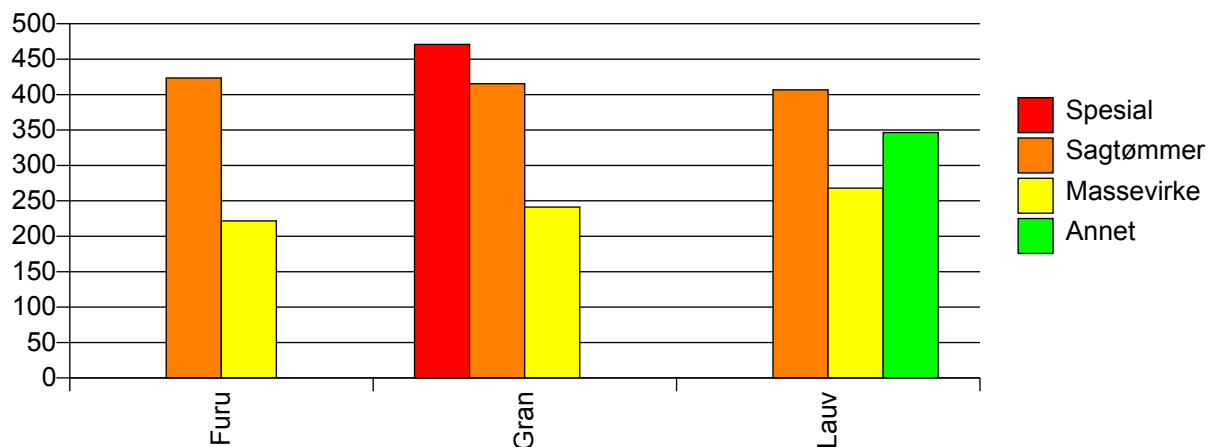
Volum (prosentfordelt)



Gjennomsnittspris 2010 (kr/kbm)

	Spesial	Sagtømmer	Massevirke	Annet	Vrak	Snitt:
Furu		423	222		0	328
Gran	471	415	241		0	319
Lauv		407	268	346		301
Snitt:	471	416	241	346	0	319

Gjennomsnittspris (kr/kbm)

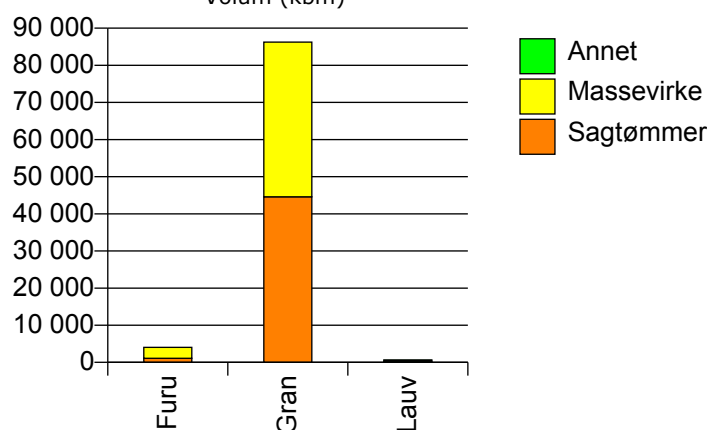


1702 STEINKJER

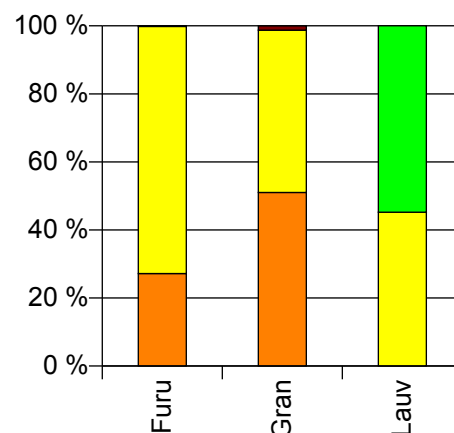
Volum 2010 (kbm)

	Sagtømmer	Massevirke	Annet	Vrak	Sum:
Furu	1 100	2 938		7	4 045
Gran	44 571	41 660		1 102	87 333
Lauv		302	366		668
Sum:	45 671	44 900	366	1 109	92 046

Volum (kbm)



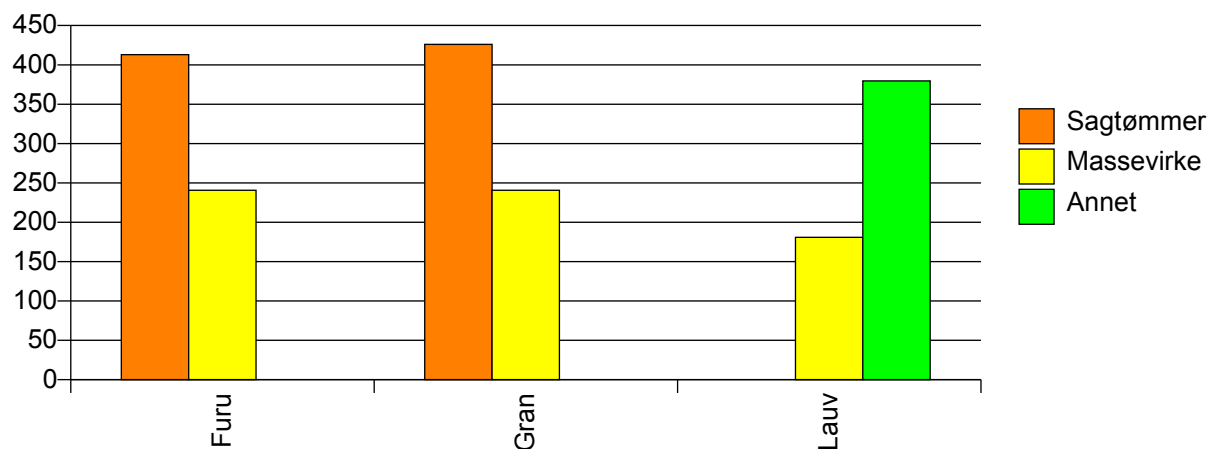
Volum (prosentfordelt)



Gjennomsnittspris 2010 (kr/kbm)

	Sagtømmer	Massevirke	Annet	Vrak	Snitt
Furu	413	241		0	287
Gran	426	241		0	332
Lauv		181	380		290
Snitt	426	240	380	0	330

Gjennomsnittspris (kr/kbm)

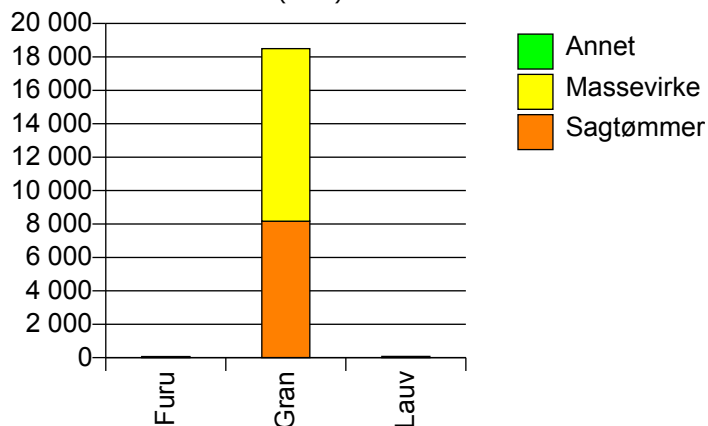


1703 NAMSOS

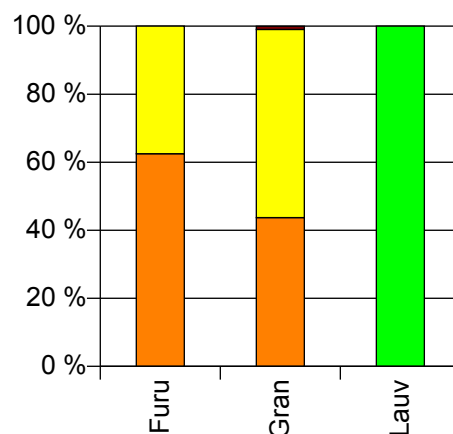
Volum 2010 (kbm)

	Sagtømmer	Massevirke	Annet	Vrak	Sum:
Furu	40	24		0	64
Gran	8 166	10 327		180	18 673
Lauv			72		72
Sum:	8 206	10 351	72	180	18 809

Volum (kbm)



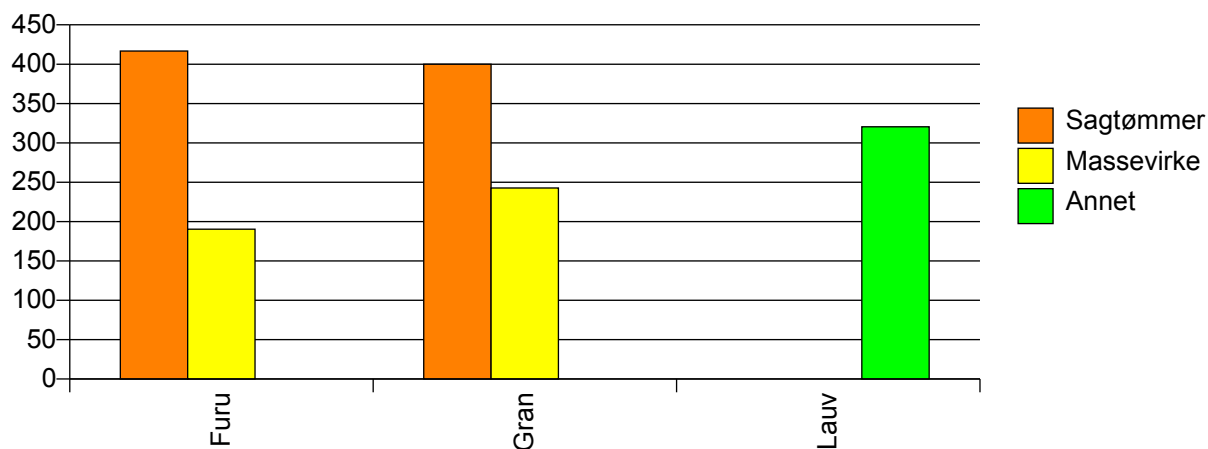
Volum (prosentfordelt)



Gjennomsnittspris 2010 (kr/kbm)

	Sagtømmer	Massevirke	Annet	Vrak	Snitt
Furu	417	190		#DIV/0	332
Gran	400	243		0	309
Lauv			320		320
Snitt	400	243	320	0	309

Gjennomsnittspris (kr/kbm)

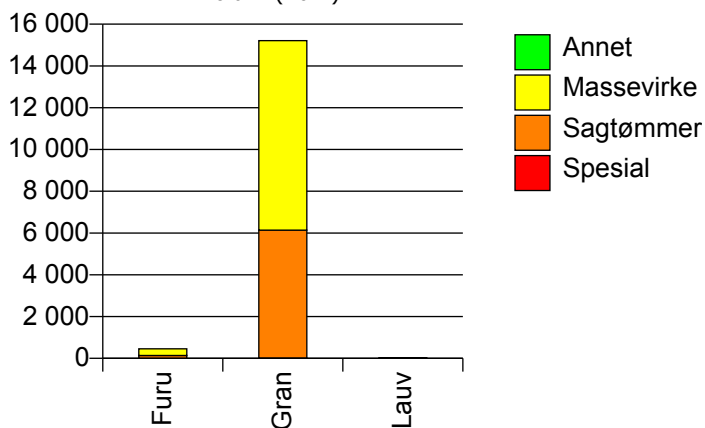


1711 MERÅKER

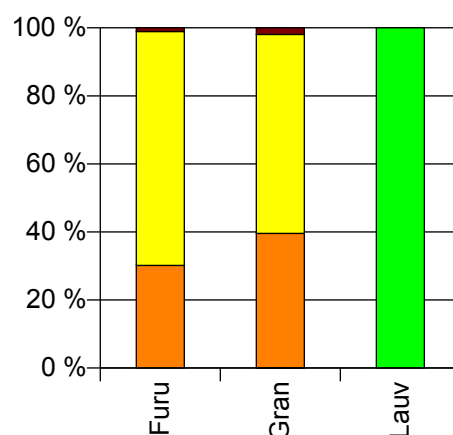
Volum 2010 (kbm)

	Spesial	Sagtømmer	Massevirke	Annet	Vrak	Sum:
Furu		139	317		5	461
Gran	15	6 124	9 075		299	15 513
Lauv				29		29
Sum:	15	6 263	9 392	29	304	16 003

Volum (kbm)



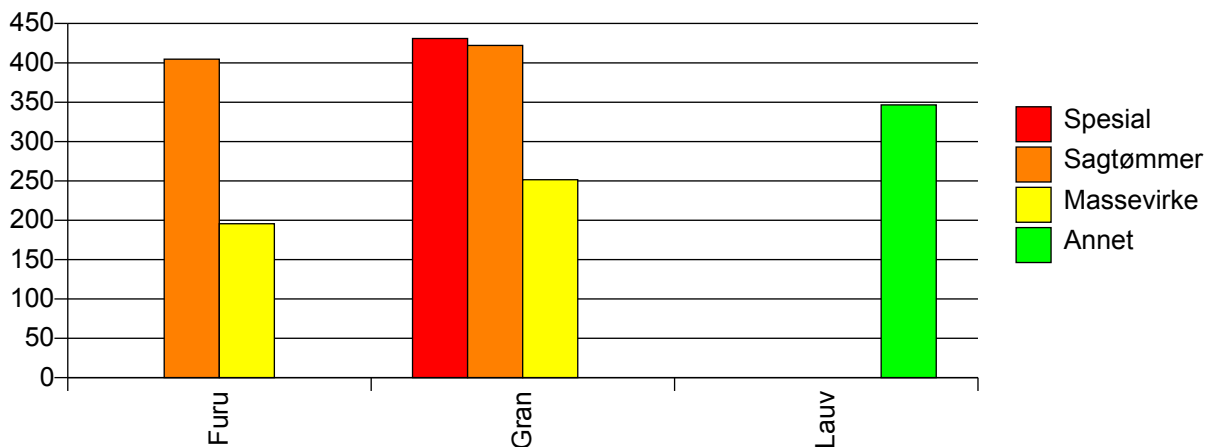
Volum (prosentfordelt)



Gjennomsnittspris 2010 (kr/kbm)

	Spesial	Sagtømmer	Massevirke	Annet	Vrak	Snitt
Furu		405	196		0	256
Gran	431	422	251		0	314
Lauv				347		347
Snitt	431	422	250	347	0	313

Gjennomsnittspris (kr/kbm)

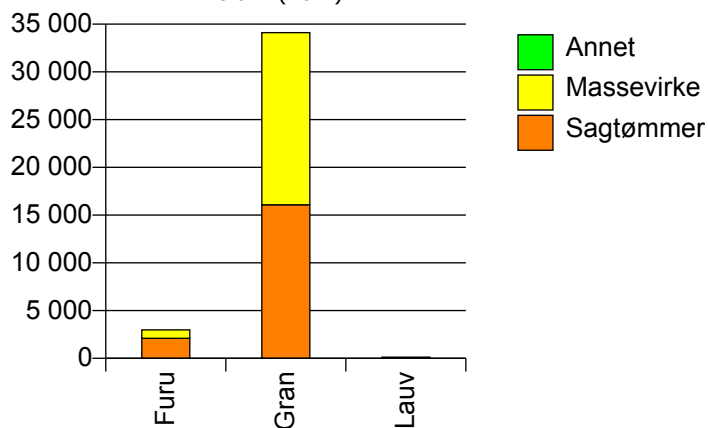


1714 STJØRDAL

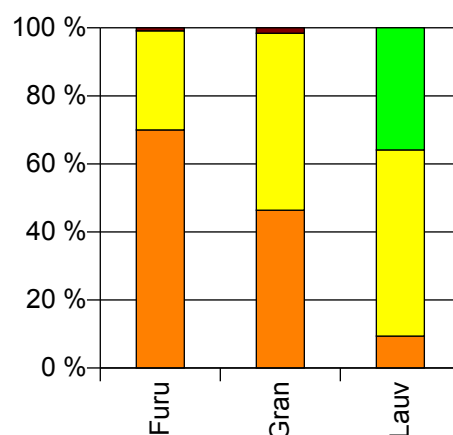
Volum 2010 (kbm)

	Sagtømmer	Massevirke	Annet	Vrak	Sum:
Furu	2 101	874		27	3 002
Gran	16 081	18 037		550	34 668
Lauv	11	64	42		117
Sum:	18 193	18 975	42	577	37 787

Volum (kbm)



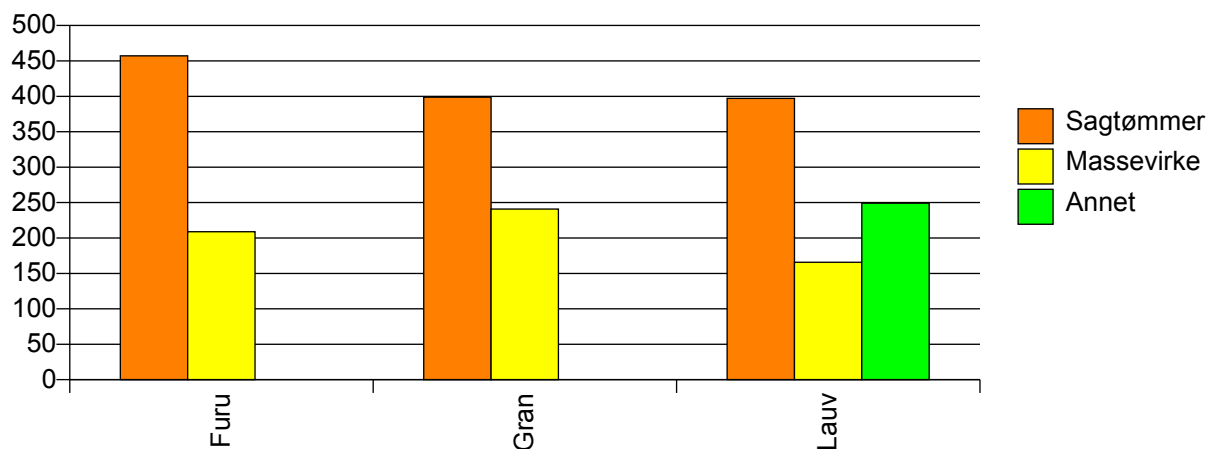
Volum (prosentfordelt)



Gjennomsnittspris 2010 (kr/kbm)

	Sagtømmer	Massevirke	Annet	Vrak	Snitt
Furu	457	209		0	381
Gran	399	241		0	310
Lauv	397	166	249		217
Snitt	406	239	249	0	316

Gjennomsnittspris (kr/kbm)

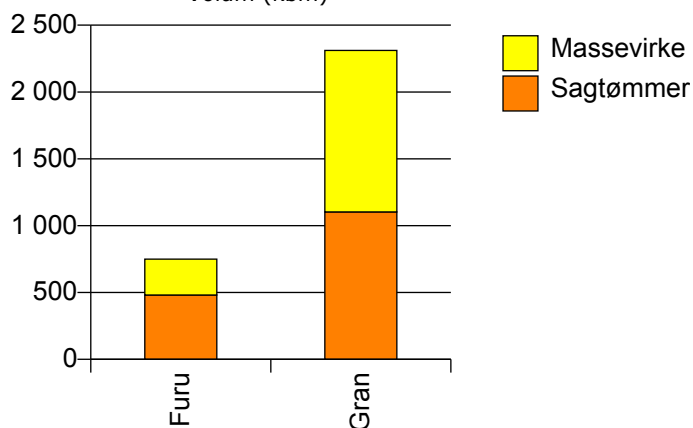


1717 FROSTA

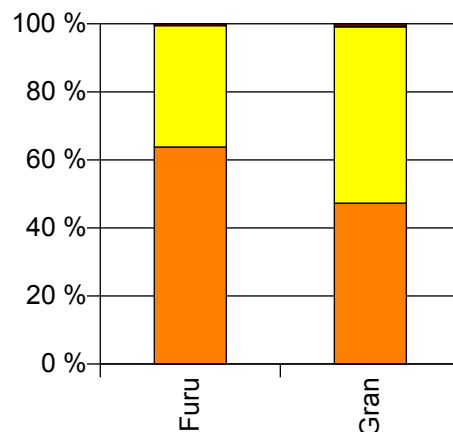
Volum 2010 (kbm)

	Sagtømmer	Massevirke	Vrak	Sum:
Furu	481	269	4	754
Gran	1 103	1 208	21	2 332
Sum:	1 584	1 477	25	3 086

Volum (kbm)



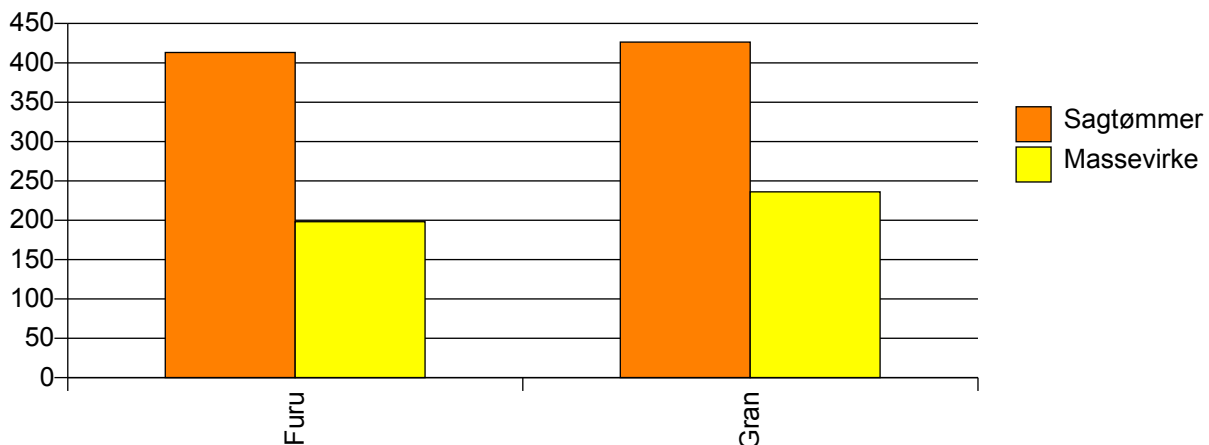
Volum (prosentfordelt)



Gjennomsnittspris 2010 (kr/kbm)

	Sagtømmer	Massevirke	Vrak	Snitt
Furu	413	198	0	334
Gran	426	236	0	324
Snitt	422	229	0	327

Gjennomsnittspris (kr/kbm)

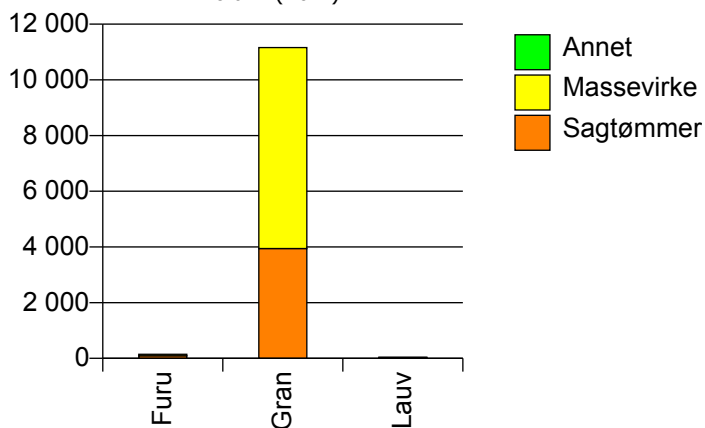


1718 LEKSVIK

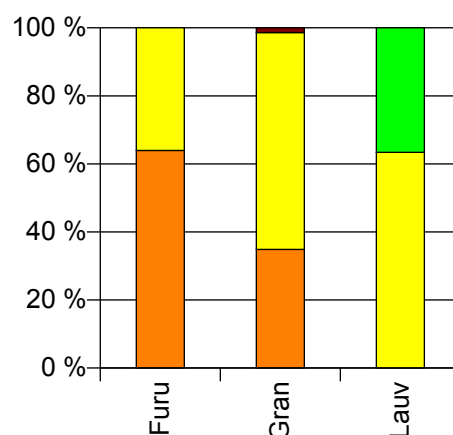
Volum 2010 (kbm)

	Sagtømmer	Massevirke	Annet	Vrak	Sum:
Furu	94	53		0	147
Gran	3 945	7 217		157	11 319
Lauv		26	15		41
Sum:	4 039	7 296	15	157	11 507

Volum (kbm)



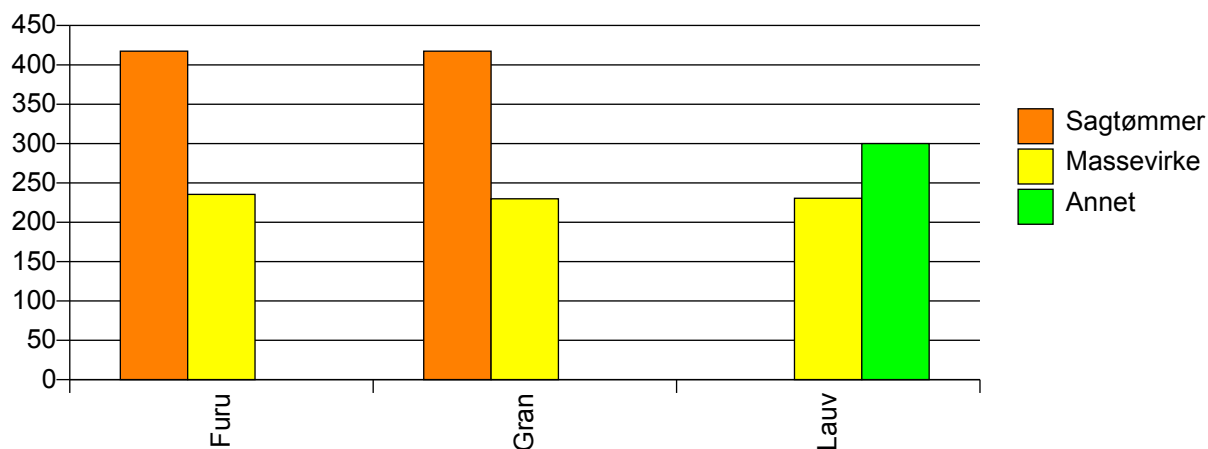
Volum (prosentfordelt)



Gjennomsnittspris 2010 (kr/kbm)

	Sagtømmer	Massevirke	Annet	Vrak	Snitt
Furu	417	235		#DIV/0	352
Gran	417	230		0	292
Lauv		231	300		256
Snitt	417	230	300	0	293

Gjennomsnittspris (kr/kbm)

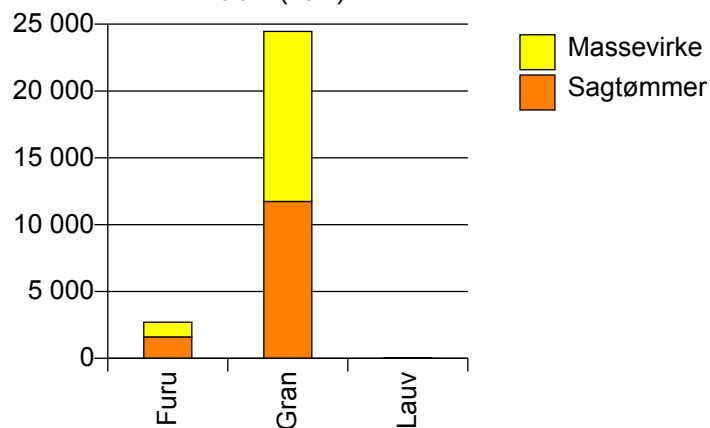


1719 LEVANGER

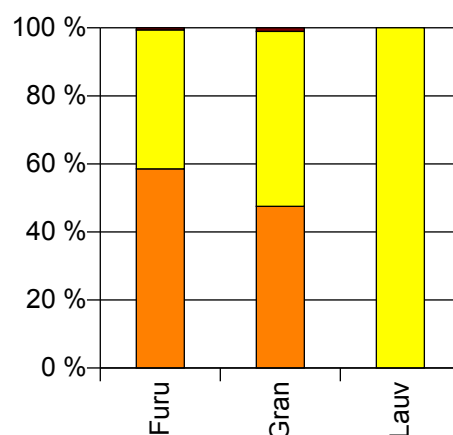
Volum 2010 (kbm)

	Sagtømmer	Massevirke	Vrak	Sum:
Furu	1 598	1 114	17	2 729
Gran	11 739	12 714	254	24 707
Lauv		28		28
Sum:	13 337	13 856	271	27 464

Volum (kbm)



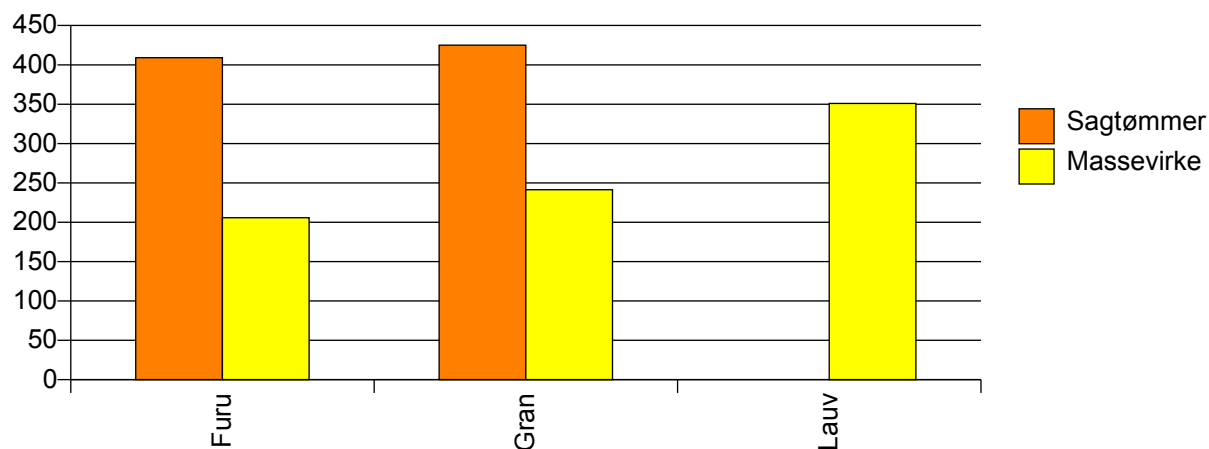
Volum (prosentfordelt)



Gjennomsnittspris 2010 (kr/kbm)

	Sagtømmer	Massevirke	Vrak	Snitt
Furu	409	206	0	324
Gran	425	241	0	326
Lauv		351		351
Snitt	423	239	0	326

Gjennomsnittspris (kr/kbm)

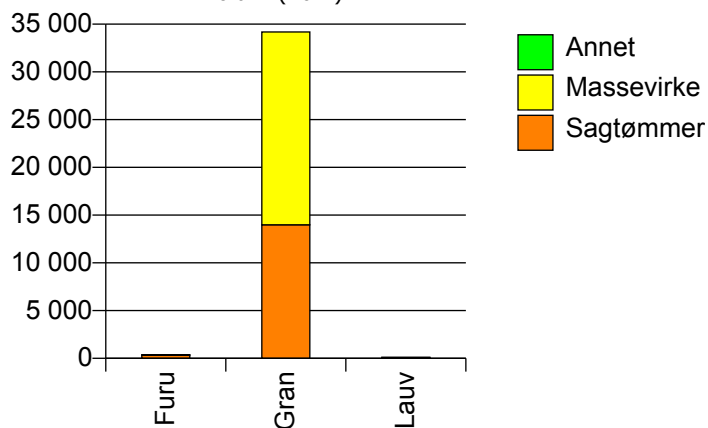


1721 VERDAL

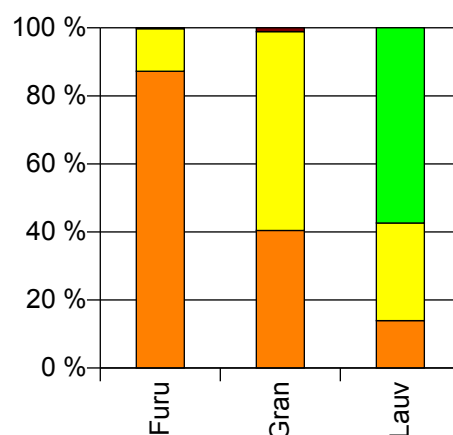
Volum 2010 (kbm)

	Sagtømmer	Massevirke	Annet	Vrak	Sum:
Furu	335	48		1	384
Gran	13 986	20 201		392	34 579
Lauv	17	35	70		122
Sum:	14 338	20 284	70	393	35 085

Volum (kbm)



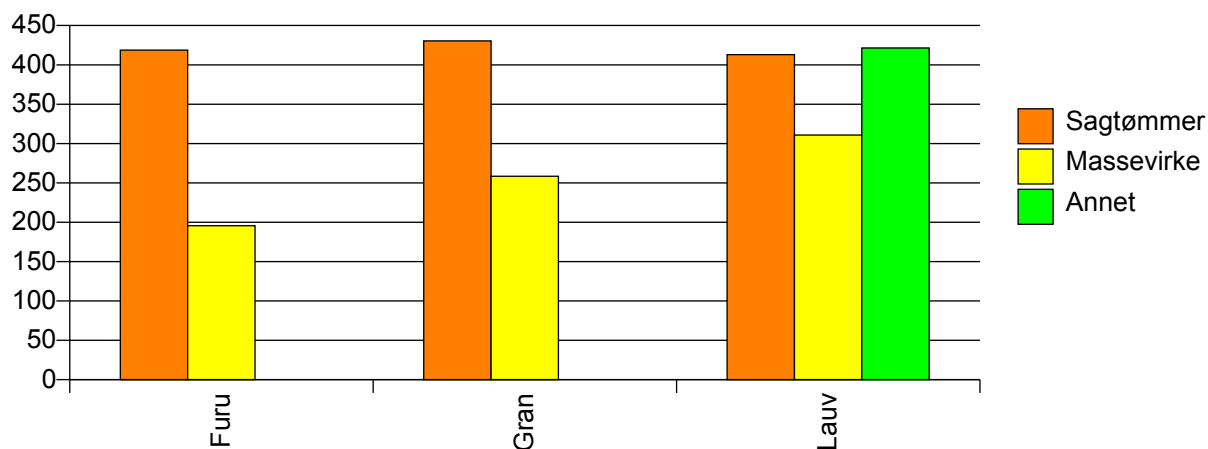
Volum (prosentfordelt)



Gjennomsnittspris 2010 (kr/kbm)

	Sagtømmer	Massevirke	Annet	Vrak	Snitt
Furu	419	196		0	390
Gran	430	258		0	325
Lauv	413	311	421		389
Snitt	430	258	421	0	326

Gjennomsnittspris (kr/kbm)

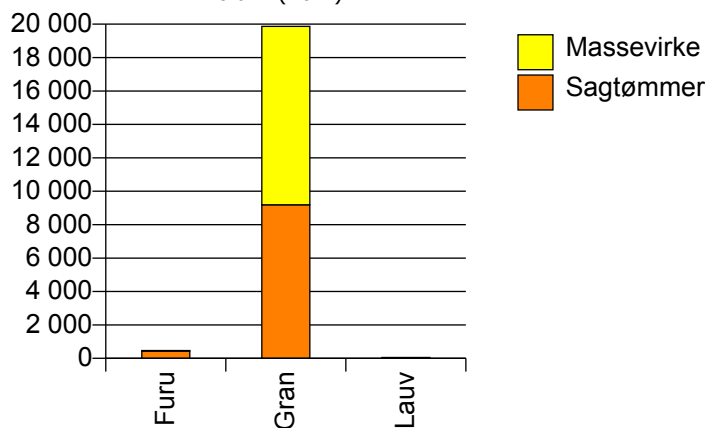


1723 MOSVIK

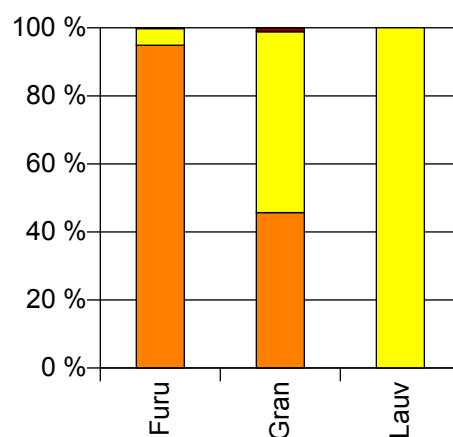
Volum 2010 (kbm)

	Sagtømmer	Massevirke	Vrak	Sum:
Furu	444	23	1	468
Gran	9 188	10 683	233	20 104
Lauv		53		53
Sum:	9 632	10 759	234	20 625

Volum (kbm)



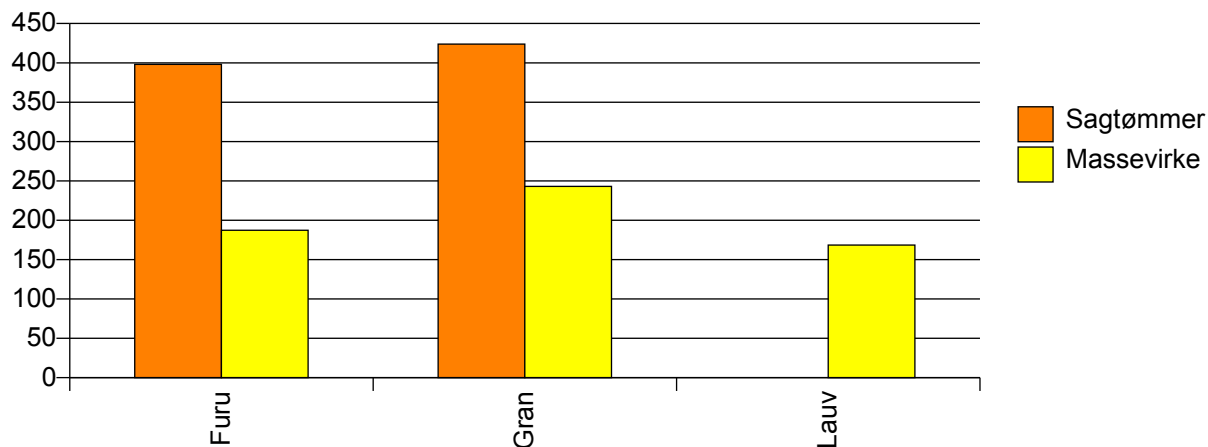
Volum (prosentfordelt)



Gjennomsnittspris 2010 (kr/kbm)

	Sagtømmer	Massevirke	Vrak	Snitt
Furu	398	187	0	387
Gran	424	243	0	323
Lauv		168		168
Snitt	423	243	0	324

Gjennomsnittspris (kr/kbm)

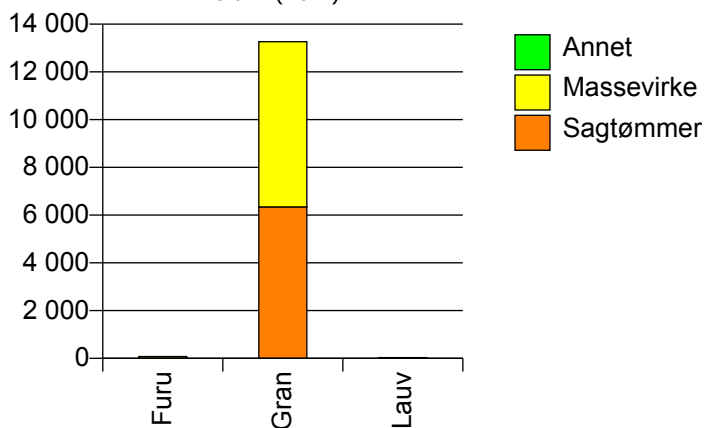


1724 VERRAN

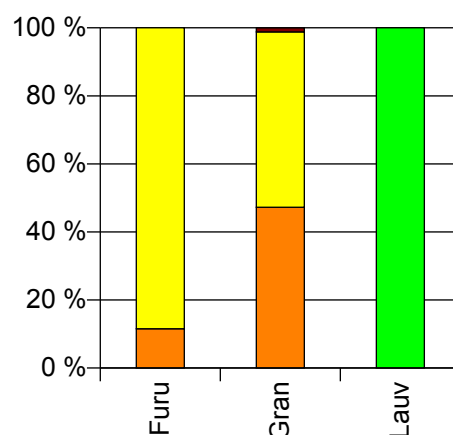
Volum 2010 (kbm)

	Sagtømmer	Massevirke	Annet	Vrak	Sum:
Furu	9	69		0	78
Gran	6 344	6 919		159	13 422
Lauv			30		30
Sum:	6 353	6 988	30	159	13 530

Volum (kbm)



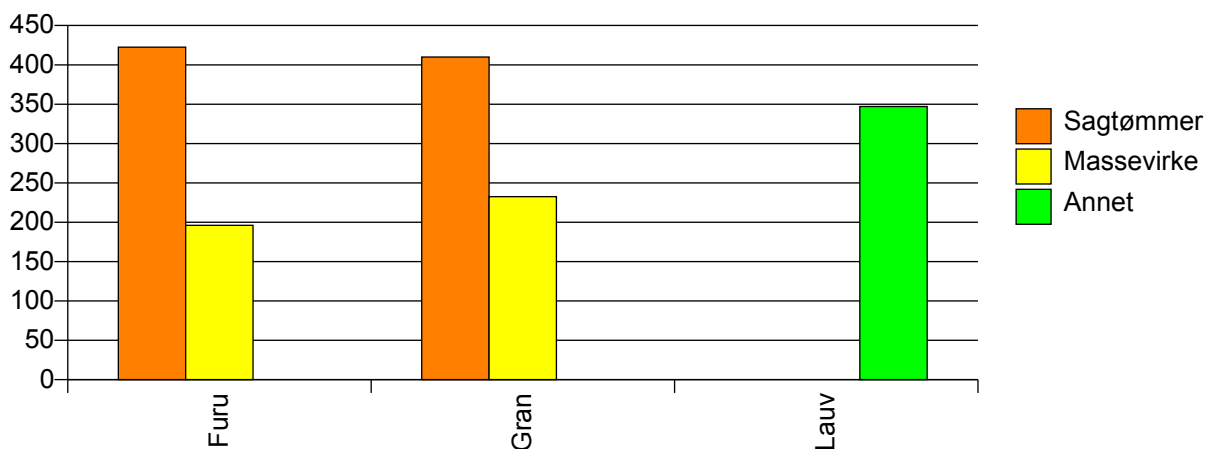
Volum (prosentfordelt)



Gjennomsnittspris 2010 (kr/kbm)

	Sagtømmer	Massevirke	Annet	Vrak	Snitt
Furu	422	196		#DIV/0	222
Gran	410	233		0	314
Lauv			347		347
Snitt	410	232	347	0	313

Gjennomsnittspris (kr/kbm)

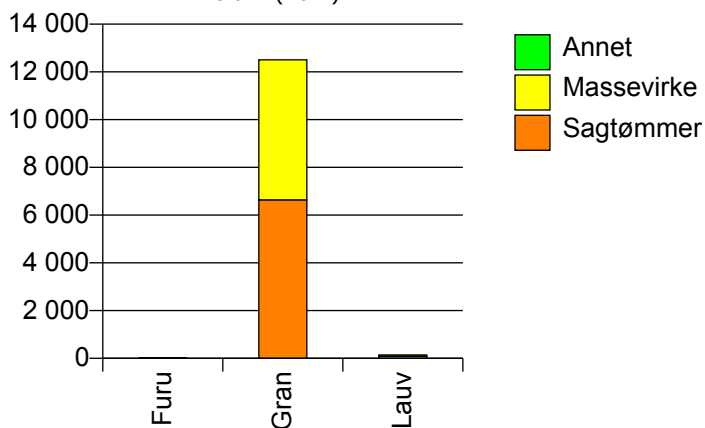


1725 NAMDALSEID

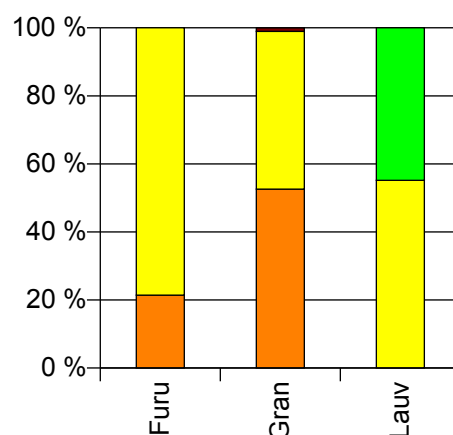
Volum 2010 (kbm)

	Sagtømmer	Massevirke	Annet	Vrak	Sum:
Furu	3	11			14
Gran	6 642	5 861		129	12 632
Lauv		80	65		145
Sum:	6 645	5 952	65	129	12 791

Volum (kbm)



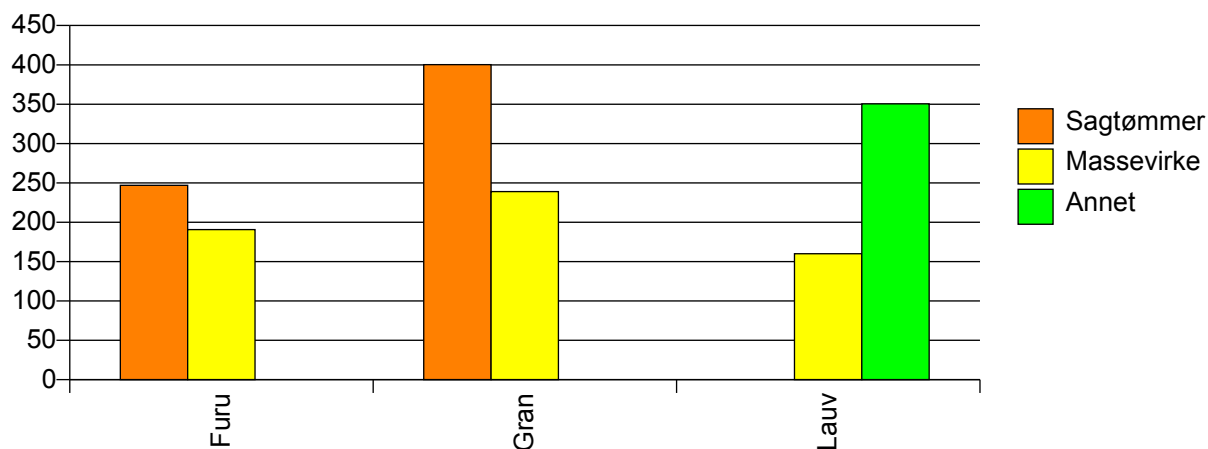
Volum (prosentfordelt)



Gjennomsnittspris 2010 (kr/kbm)

	Sagtømmer	Massevirke	Annet	Vrak	Snitt
Furu	247	191			203
Gran	400	239		0	321
Lauv		160	351		245
Snitt	400	238	351	0	320

Gjennomsnittspris (kr/kbm)

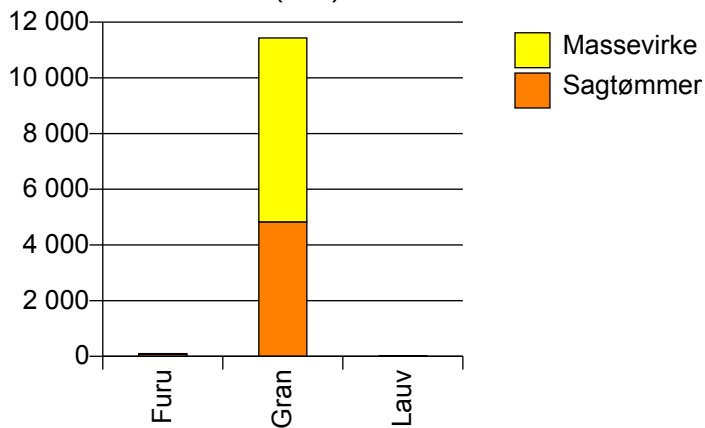


1729 INDERØY

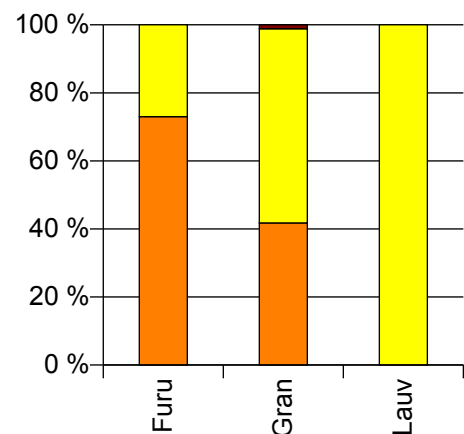
Volum 2010 (kbm)

	Sagtømmer	Massevirke	Vrak	Sum:
Furu	73	27	0	100
Gran	4 830	6 603	135	11 568
Lauv		18		18
Sum:	4 903	6 648	135	11 686

Volum (kbm)



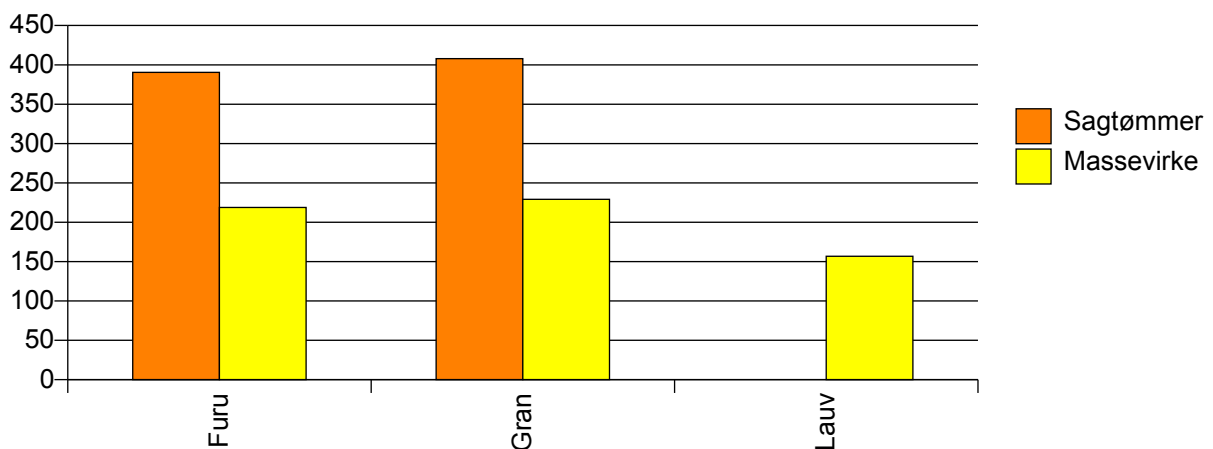
Volum (prosentfordelt)



Gjennomsnittspris 2010 (kr/kbm)

	Sagtømmer	Massevirke	Vrak	Snitt
Furu	390	219	#DIV/0	344
Gran	408	229	0	301
Lauv		157		157
Snitt	408	229	0	301

Gjennomsnittspris (kr/kbm)

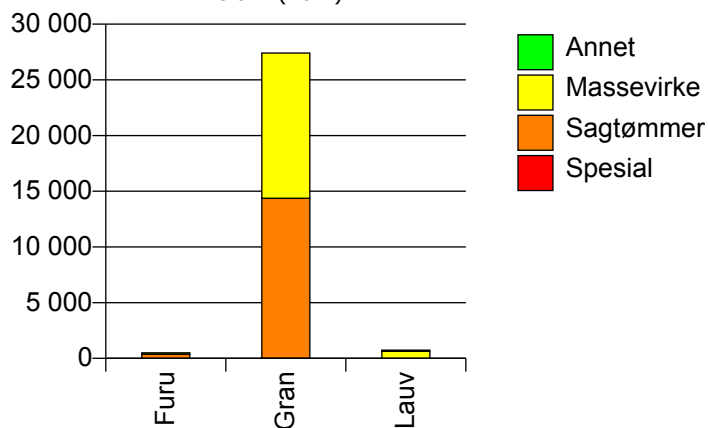


1736 SNÅSA

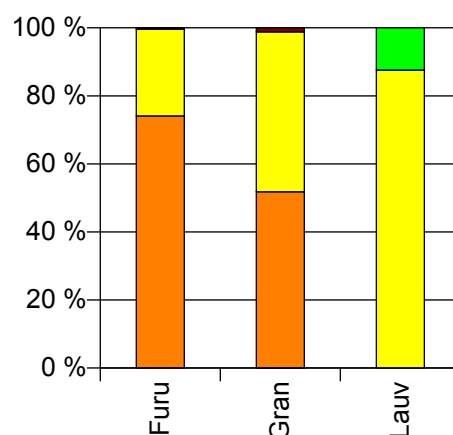
Volum 2010 (kbm)

	Spesial	Sagtømmer	Massevirke	Annet	Vrak	Sum:
Furu		369	127		2	498
Gran	17	14 355	13 034		335	27 741
Lauv			643	91		734
Sum:	17	14 724	13 804	91	337	28 973

Volum (kbm)



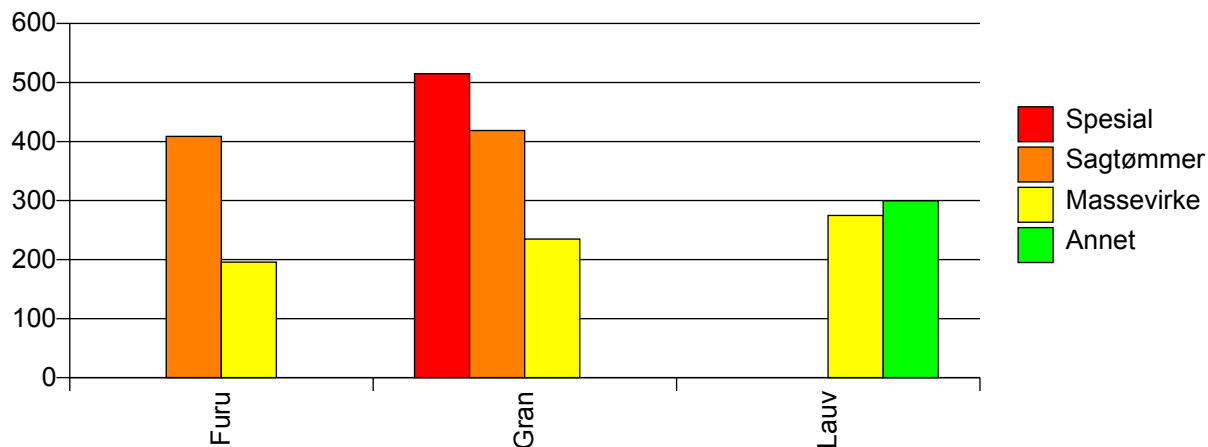
Volum (prosentfordelt)



Gjennomsnittspris 2010 (kr/kbm)

	Spesial	Sagtømmer	Massevirke	Annet	Vrak	Snitt
Furu		409	196		0	353
Gran	515	419	235		0	327
Lauv			275	300		278
Snitt	515	418	236	300	0	326

Gjennomsnittspris (kr/kbm)

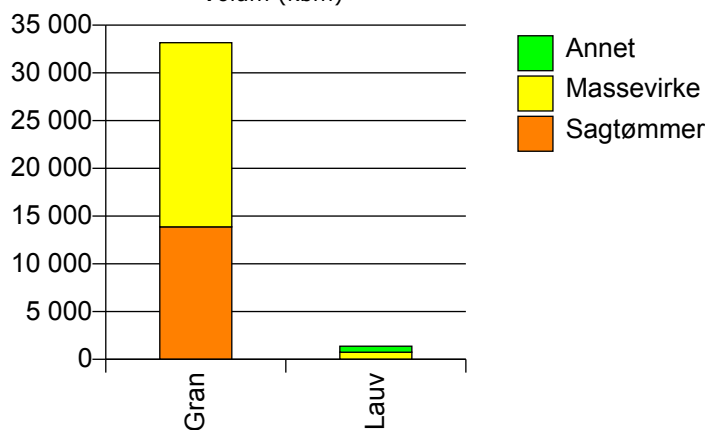


1738 LIERNE

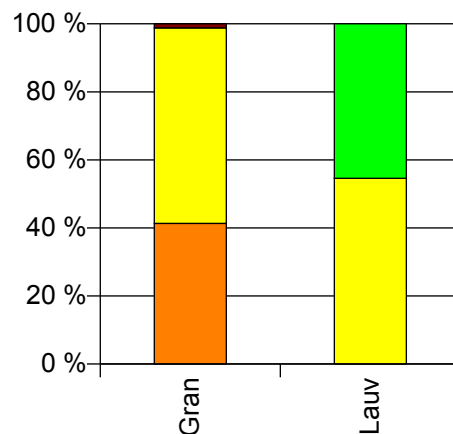
Volum 2010 (kbm)

	Sagtømmer	Massevirke	Annet	Vrak	Sum:
Gran	13 869	19 289		406	33 564
Lauv		753	626		1 379
Sum:	13 869	20 042	626	406	34 943

Volum (kbm)



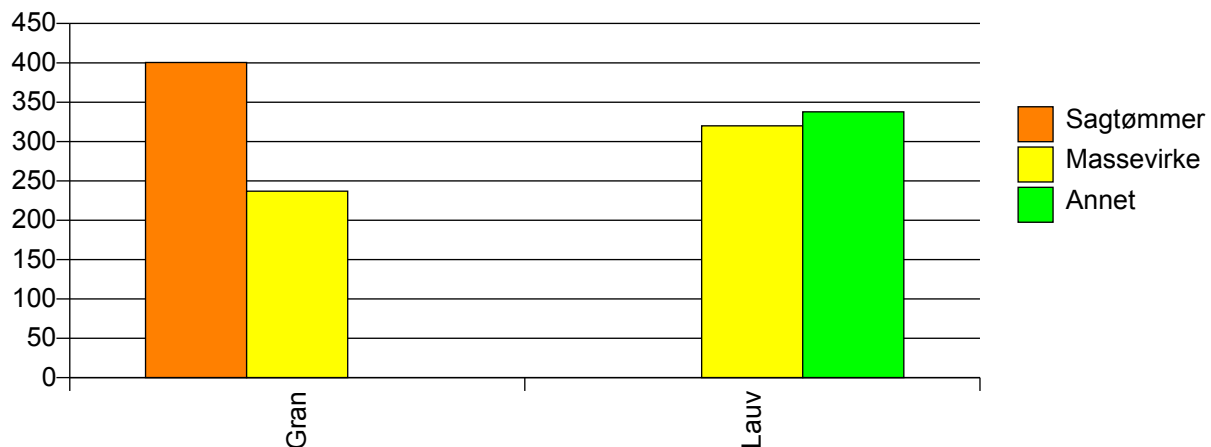
Volum (prosentfordelt)



Gjennomsnittspris 2010 (kr/kbm)

	Sagtømmer	Massevirke	Annet	Vrak	Snitt
Gran	400	237		0	302
Lauv		320	338		328
Snitt	400	240	338	0	303

Gjennomsnittspris (kr/kbm)

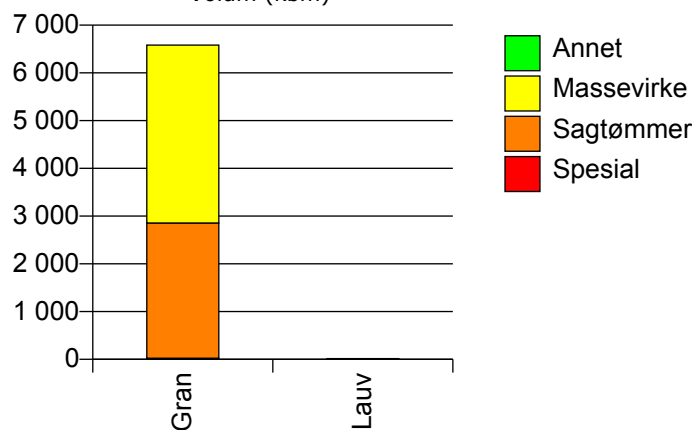


1740 NAMSSKOGAN

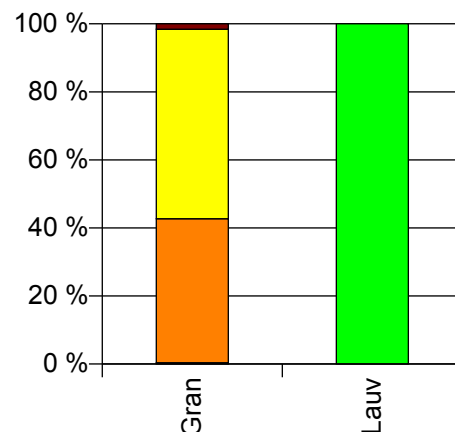
Volum 2010 (kbm)

	Spesial	Sagtømmer	Massevirke	Annet	Vrak	Sum:
Gran	25	2 831	3 727		107	6 690
Lauv				15		15
Sum:	25	2 831	3 727	15	107	6 705

Volum (kbm)



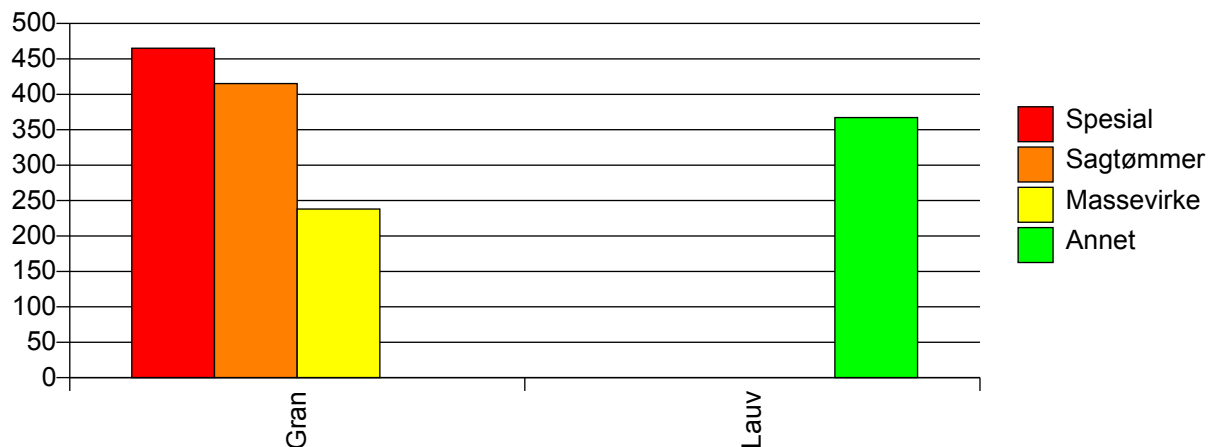
Volum (prosentfordelt)



Gjennomsnittspris 2010 (kr/kbm)

	Spesial	Sagtømmer	Massevirke	Annet	Vrak	Snitt
Gran	465	415	238		0	310
Lauv				367		367
Snitt	465	415	238	367	0	310

Gjennomsnittspris (kr/kbm)

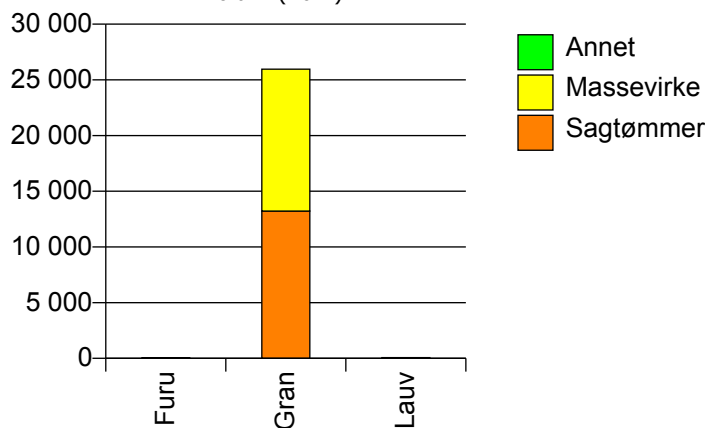


1742 GRONG

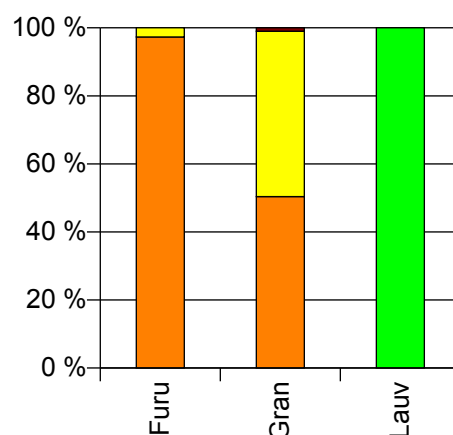
Volum 2010 (kbm)

	Sagtømmer	Massevirke	Annet	Vrak	Sum:
Furu	36	1		0	37
Gran	13 217	12 746		258	26 221
Lauv			67		67
Sum:	13 253	12 747	67	258	26 325

Volum (kbm)



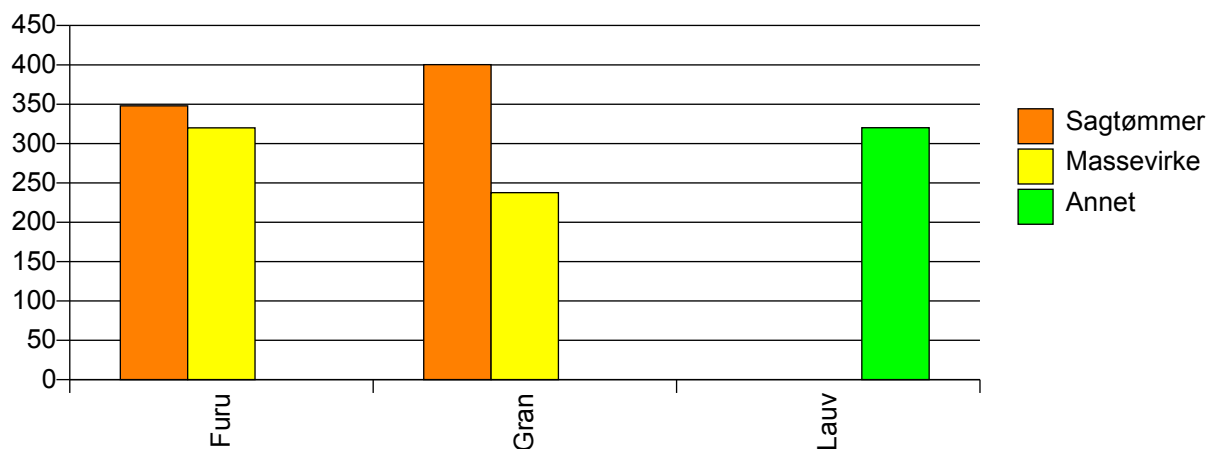
Volum (prosentfordelt)



Gjennomsnittspris 2010 (kr/kbm)

	Sagtømmer	Massevirke	Annet	Vrak	Snitt
Furu	348	320		#DIV/0	347
Gran	400	238		0	317
Lauv			320		320
Snitt	400	238	320	0	317

Gjennomsnittspris (kr/kbm)

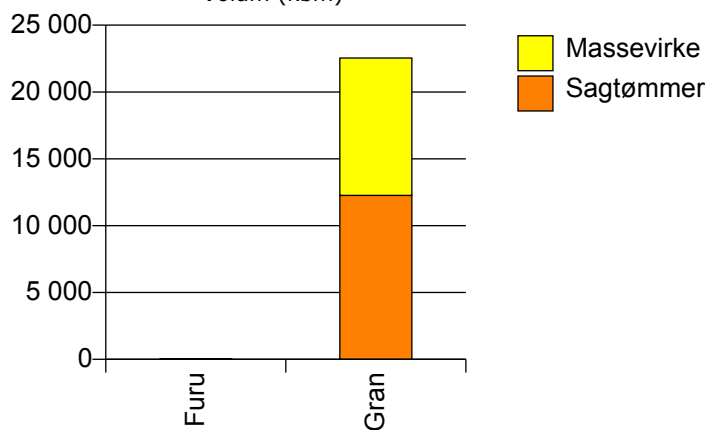


1743 HØYLANDET

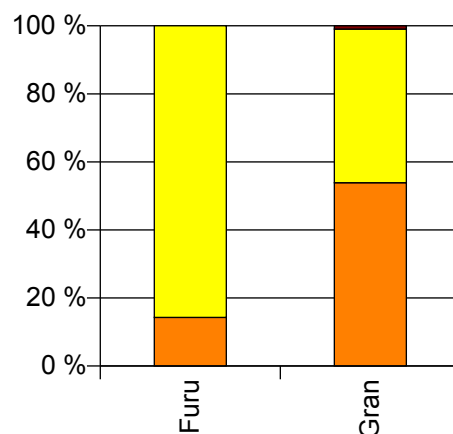
Volum 2010 (kbm)

	Sagtømmer	Massevirke	Vrak	Sum:
Furu	3	18		21
Gran	12 265	10 276	218	22 759
Sum:	12 268	10 294	218	22 780

Volum (kbm)



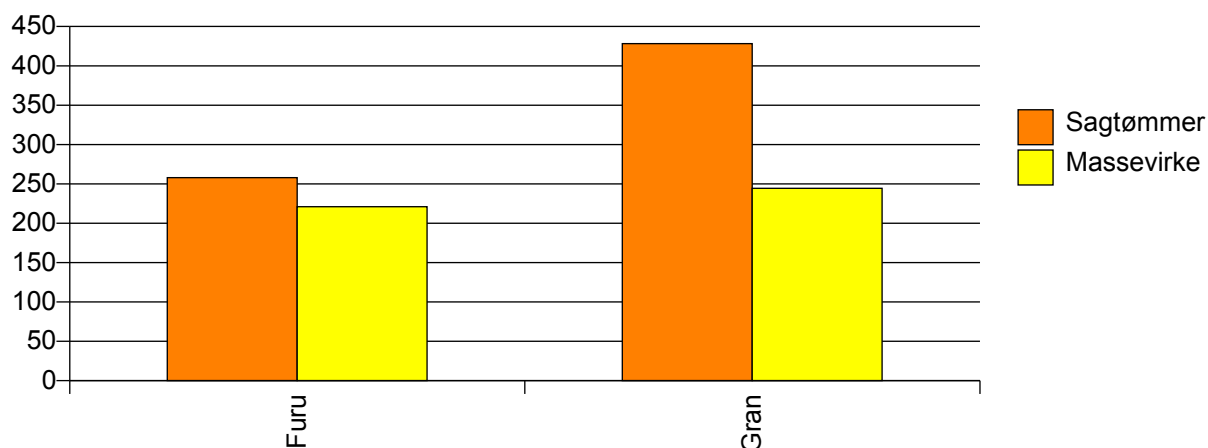
Volum (prosentfordelt)



Gjennomsnittspris 2010 (kr/kbm)

	Sagtømmer	Massevirke	Vrak	Snitt
Furu	258	221		226
Gran	428	244	0	341
Snitt	428	244	0	341

Gjennomsnittspris (kr/kbm)

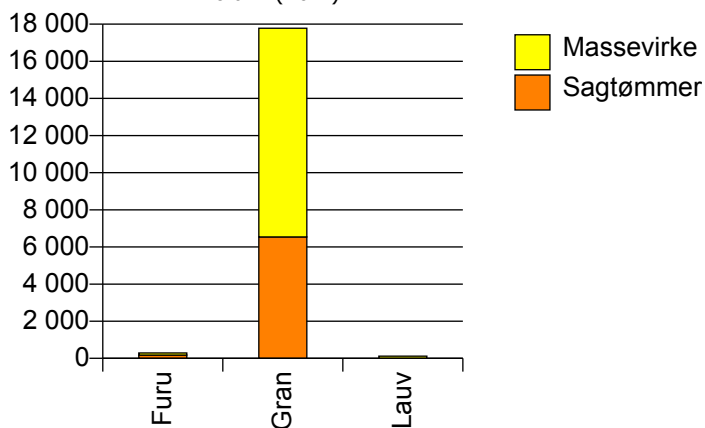


1744 OVERHALLA

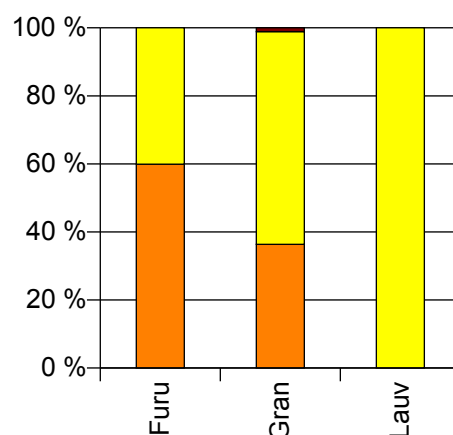
Volum 2010 (kbm)

	Sagtømmer	Massevirke	Vrak	Sum:
Furu	175	117	0	292
Gran	6 539	11 243	203	17 985
Lauv		122		122
Sum:	6 714	11 482	203	18 399

Volum (kbm)



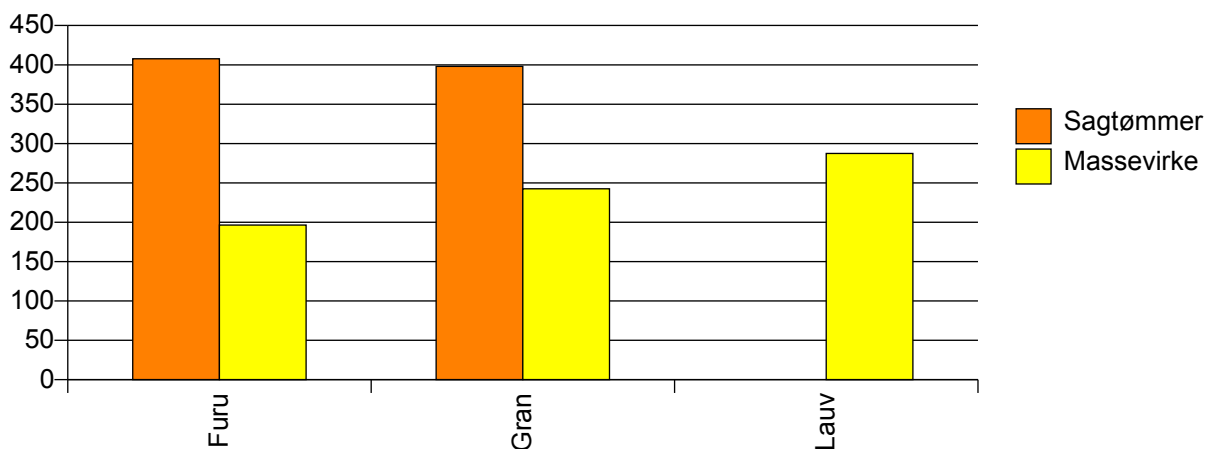
Volum (prosentfordelt)



Gjennomsnittspris 2010 (kr/kbm)

	Sagtømmer	Massevirke	Vrak	Snitt
Furu	408	197	#DIV/0	323
Gran	398	243	0	296
Lauv		287		287
Snitt	398	243	0	297

Gjennomsnittspris (kr/kbm)

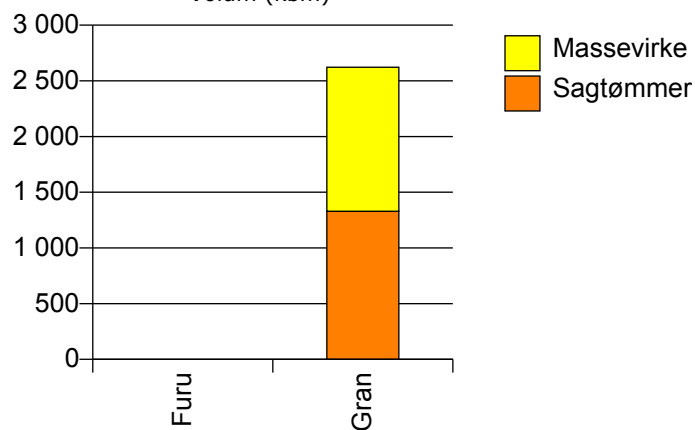


1751 NÆRØY

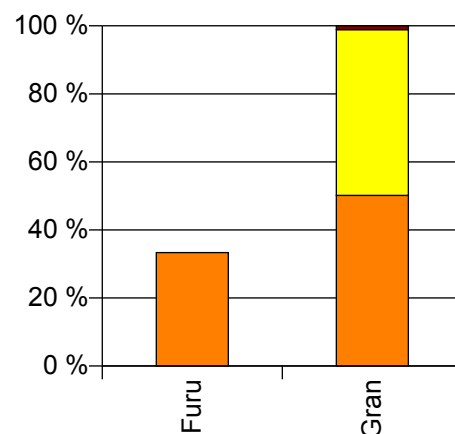
Volum 2010 (kbm)

	Sagtømmer	Massevirke	Vrak	Sum:
Furu	0			0
Gran	1 330	1 292	30	2 652
Sum:	1 330	1 292	30	2 652

Volum (kbm)



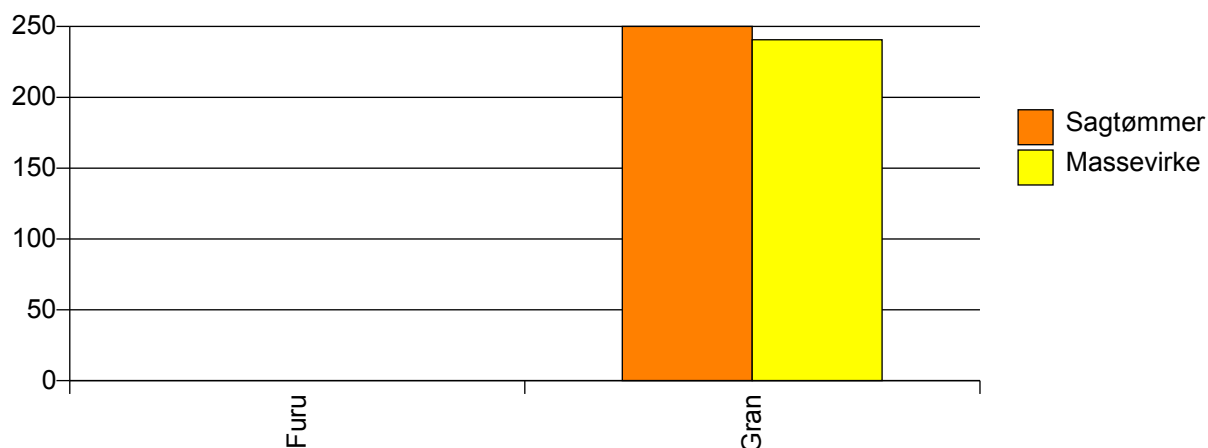
Volum (prosentfordelt)



Gjennomsnittspris 2010 (kr/kbm)

	Sagtømmer	Massevirke	Vrak	Snitt
Furu	#DIV/0			#DIV/0
Gran	407	241	0	321
Snitt	407	241	0	321

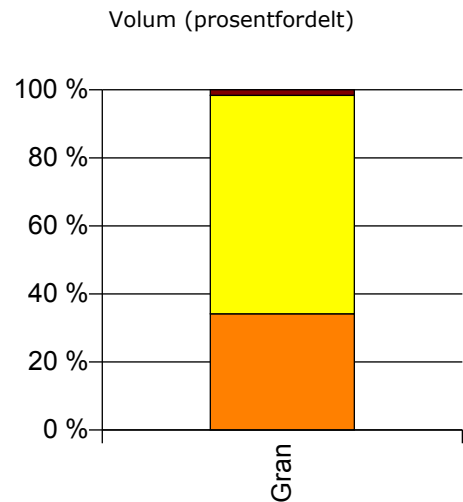
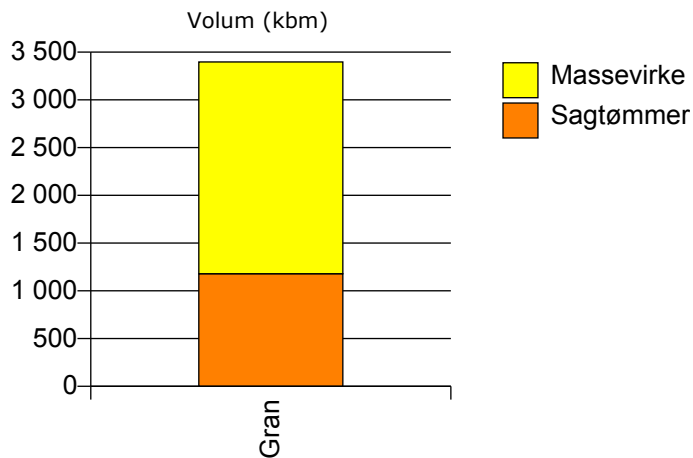
Gjennomsnittspris (kr/kbm)



1739 RØYRVIK

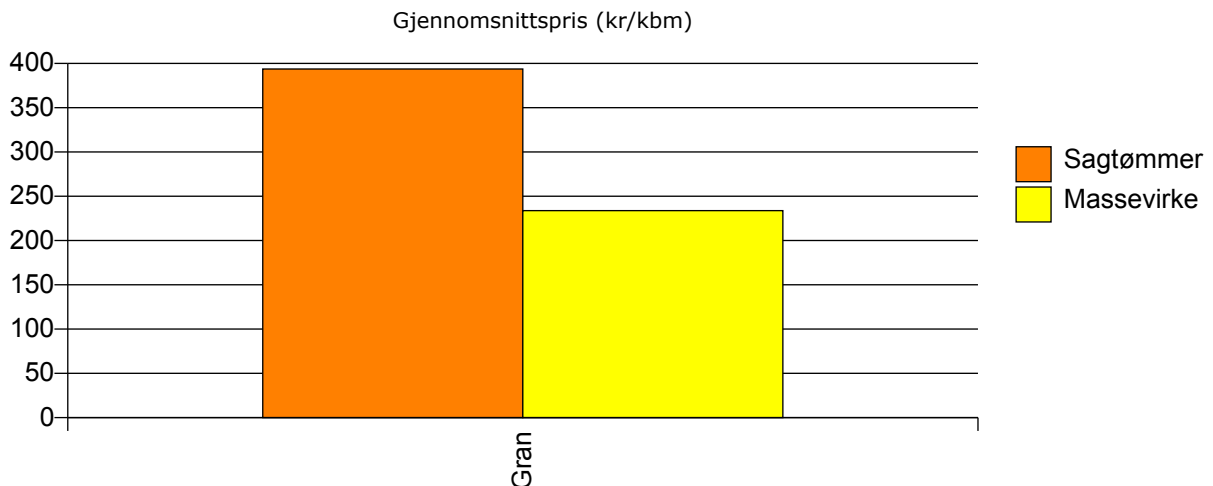
Volum 2010 (kbm)

	Sagtømmer	Massevirke	Vrak	Sum:
Gran	1 180	2 218	56	3 454
Sum:	1 180	2 218	56	3 454



Gjennomsnittspris 2010 (kr/kbm)

Gran	394	234	0	285
Snitt	394	234	0	285

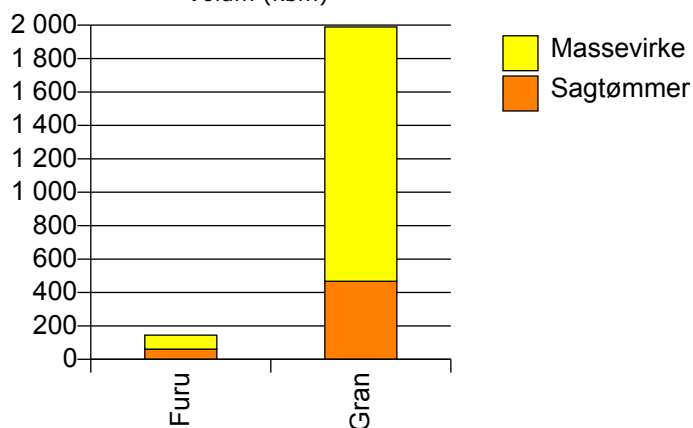


1748 FOSNES

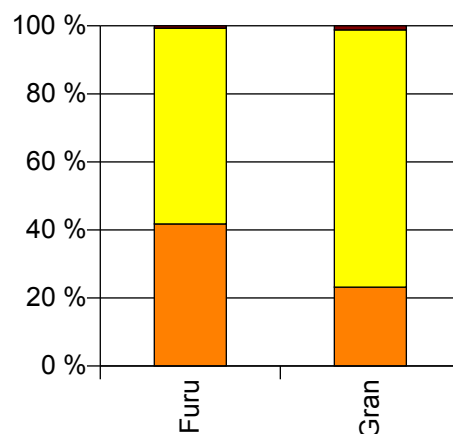
Volum 2010 (kbm)

	Sagtømmer	Massevirke	Vrak	Sum:
Furu	61	84	1	146
Gran	467	1 522	24	2 013
Sum:	528	1 606	25	2 159

Volum (kbm)



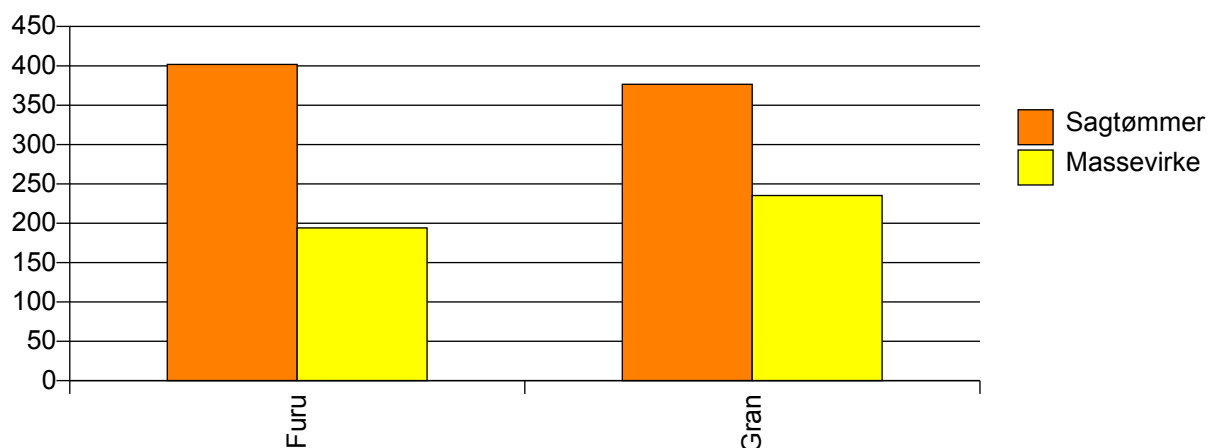
Volum (prosentfordelt)



Gjennomsnittspris 2010 (kr/kbm)

	Sagtømmer	Massevirke	Vrak	Snitt
Furu	402	194	0	280
Gran	377	235	0	265
Snitt	380	233	0	266

Gjennomsnittspris (kr/kbm)

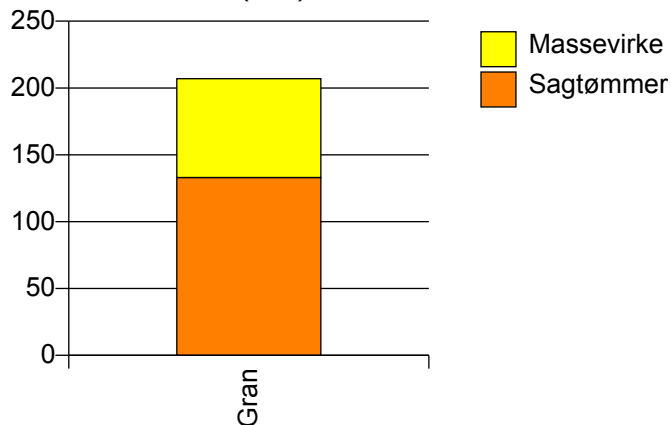


1749 FLATANGER

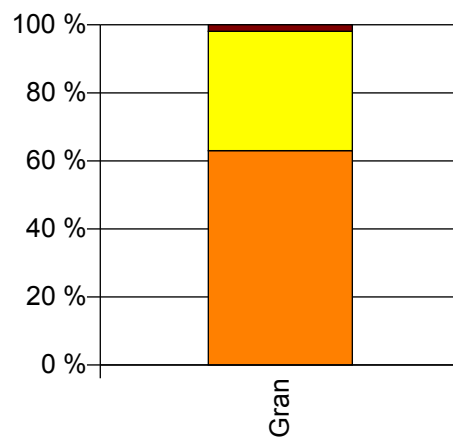
Volum 2010 (kbm)

	Sagtømmer	Massevirke	Vrak	Sum:
Gran	133	74	4	211
Sum:	133	74	4	211

Volum (kbm)



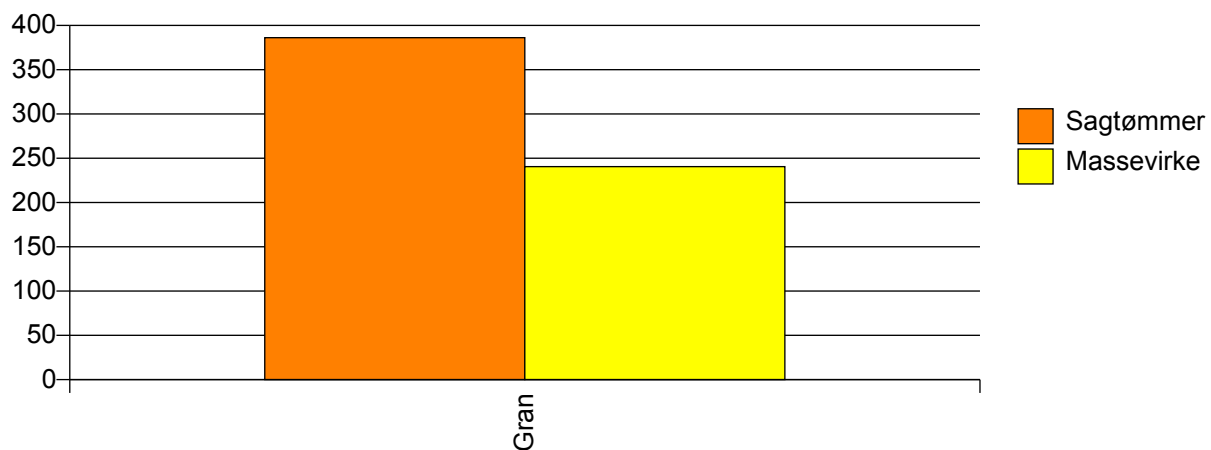
Volum (prosentfordelt)



Gjennomsnittspris 2010 (kr/kbm)

Gran	386	241	0	328
Snitt	386	241	0	328

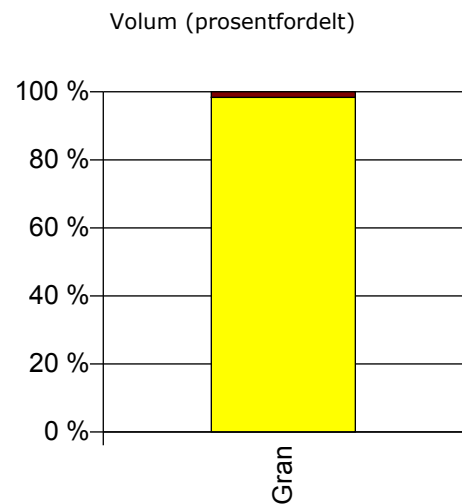
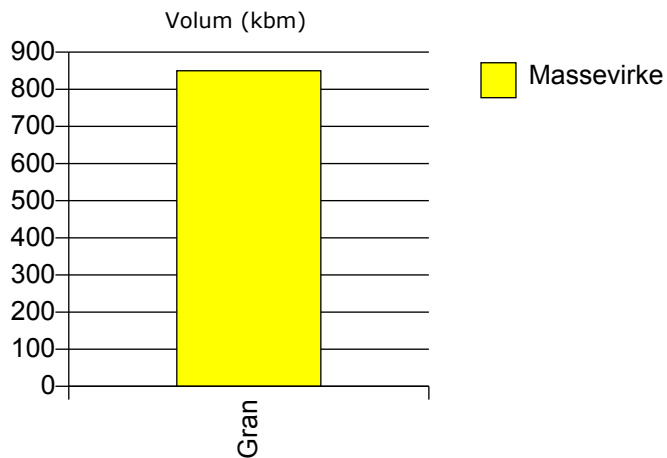
Gjennomsnittspris (kr/kbm)



1750 VIKNA

Volum 2010 (kbm)

	Massevirke	Vrak	Sum:
Gran	850	14	864
Sum:	850	14	864



Gjennomsnittspris 2010 (kr/kbm)

Gran	240	0	236
Snitt	240	0	236

