

Virkestatistikk fra  
**SKOG-DATA AS**

**Hedmark m/kommuner**

*Dataene i rapporten er hentet fra databasen som inneholder virkesdata med tilhørende innbetalinger av skogavgift. Rapporten er laget med Business Objects, som er sluttbrukerverktøyet i Skog-Data sine nye datavarehus-løsninger. Business Objects er ett meget sterkt rapportverktøy som kan presentere store mengder data effektivt.*

Rapportene kan lastes ned fra [www.skogdata.no/statistikk](http://www.skogdata.no/statistikk)

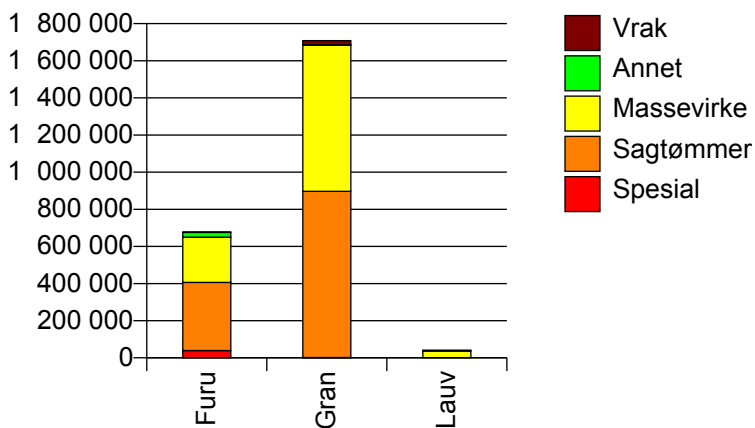
For mer informasjon, kontakt: [tabh@skogdata.no](mailto:tabh@skogdata.no)

## Hedmark

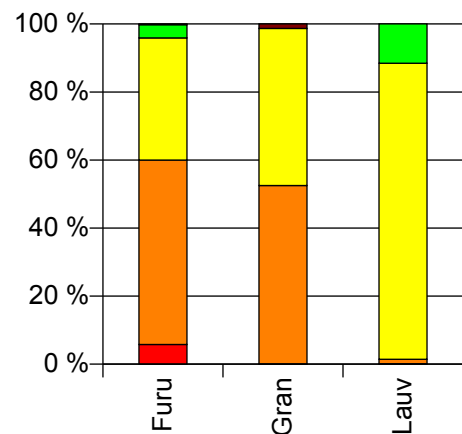
## Volum 2010

	Spesial	Sagtømmer	Massevirke	Annet	Vrak	Sum:
<b>Furu</b>	39 081	367 346	243 173	26 120	1 589	<b>677 309</b>
<b>Gran</b>	1 543	895 162	789 039	407	22 160	<b>1 708 311</b>
<b>Lauv</b>	59	526	35 915	4 770		<b>41 270</b>
<b>Sum:</b>	<b>40 683</b>	<b>1 263 034</b>	<b>1 068 127</b>	<b>31 297</b>	<b>23 749</b>	<b>2 426 890</b>

Volum (kbm)



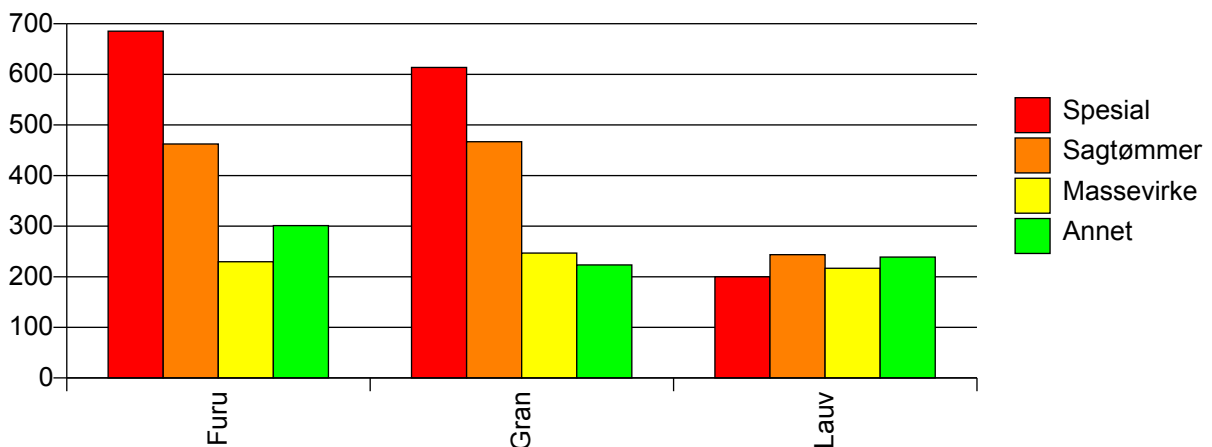
Volum (prosentfordelt)



## Gjennomsnittspris 2010 (kr/kbm)

	Spesial	Sagtømmer	Massevirke	Annet	Vrak	Snitt:
<b>Furu</b>	685	462	230	301	0	<b>384</b>
<b>Gran</b>	614	467	247	223	0	<b>359</b>
<b>Lauv</b>	200	244	217	239		<b>220</b>
<b>Snitt:</b>	<b>682</b>	<b>465</b>	<b>242</b>	<b>291</b>	<b>0</b>	<b>364</b>

Gjennomsnittspris (kr/kbm)

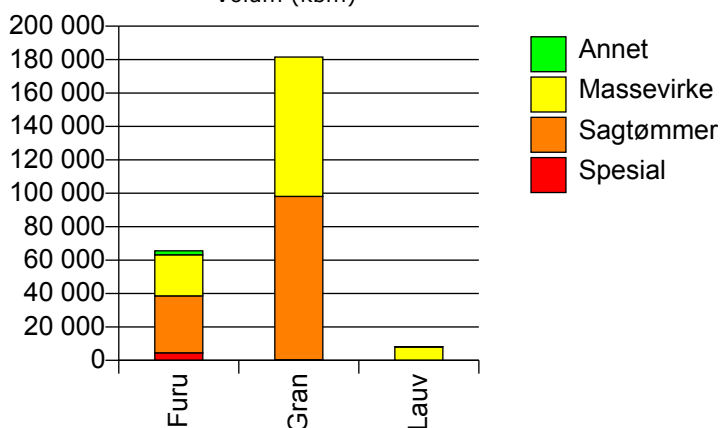


## 402 KONGSVINGER

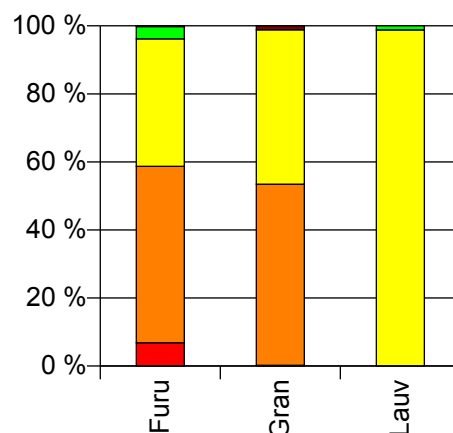
## Volum 2010 (kbm)

	Spesial	Sagtømmer	Massevirke	Annet	Vrak	Sum:
<b>Furu</b>	4 500	34 085	24 622	2 389	129	<b>65 725</b>
<b>Gran</b>	398	97 763	83 352		2 147	<b>183 660</b>
<b>Lauv</b>			8 083	99		<b>8 182</b>
<b>Sum:</b>	<b>4 898</b>	<b>131 848</b>	<b>116 057</b>	<b>2 488</b>	<b>2 276</b>	<b>257 567</b>

Volum (kbm)



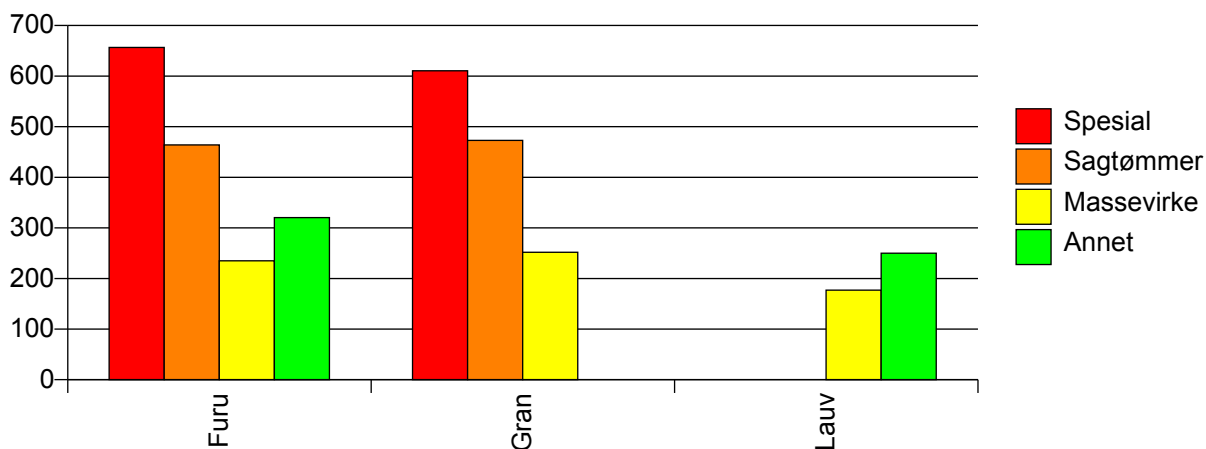
Volum (prosentfordelt)



## Gjennomsnittspris 2010 (kr/kbm)

	Spesial	Sagtømmer	Massevirke	Annet	Vrak	Snitt
<b>Furu</b>	657	464	235	320	0	<b>385</b>
<b>Gran</b>	610	473	252		0	<b>367</b>
<b>Lauv</b>			177	250		<b>178</b>
<b>Snitt</b>	<b>653</b>	<b>471</b>	<b>243</b>	<b>318</b>	<b>0</b>	<b>366</b>

Gjennomsnittspris (kr/kbm)

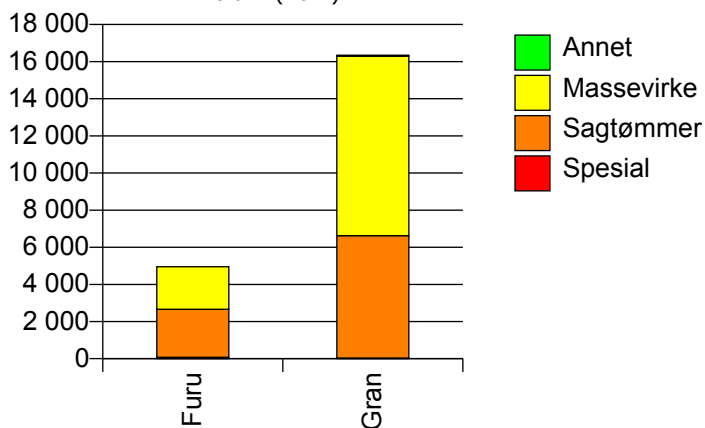


## 403 HAMAR

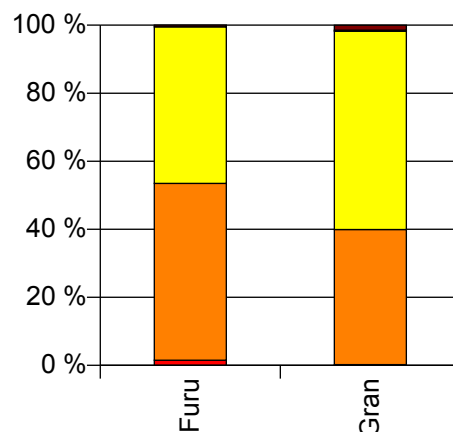
### Volum 2010 (kbm)

	Spesial	Sagtømmer	Massevirke	Annet	Vrak	Sum:
<b>Furu</b>	76	2 586	2 291		24	<b>4 977</b>
<b>Gran</b>	34	6 590	9 671	51	246	<b>16 592</b>
<b>Sum:</b>	<b>110</b>	<b>9 176</b>	<b>11 962</b>	<b>51</b>	<b>270</b>	<b>21 569</b>

Volum (kbm)



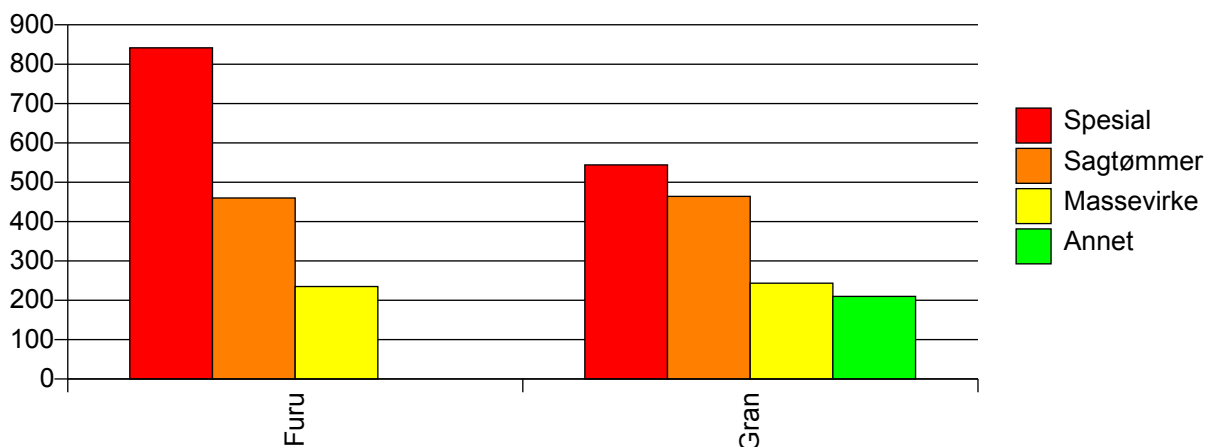
Volum (prosentfordelt)



### Gjennomsnittspris 2010 (kr/kbm)

	Spesial	Sagtømmer	Massevirke	Annet	Vrak	Snitt
<b>Furu</b>	842	460	235		0	<b>360</b>
<b>Gran</b>	544	464	243	210	0	<b>328</b>
<b>Snitt</b>	<b>750</b>	<b>463</b>	<b>242</b>	<b>210</b>	<b>0</b>	<b>335</b>

Gjennomsnittspris (kr/kbm)

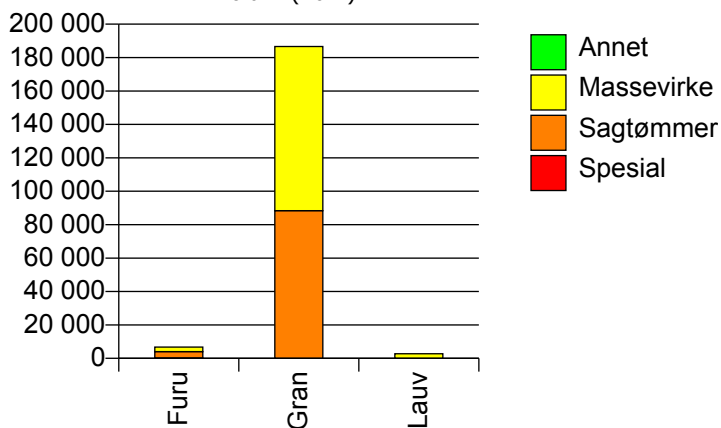


## 412 RINGSAKER

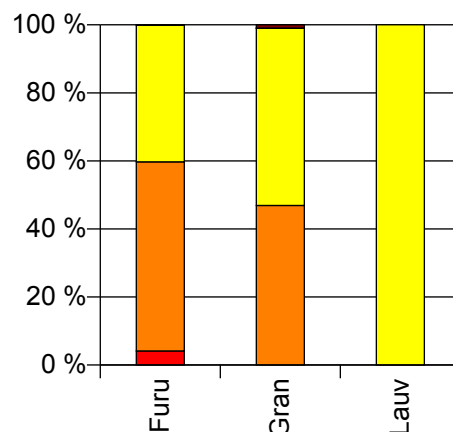
### Volum 2010 (kbm)

	Spesial	Sagtømmer	Massevirke	Annet	Vrak	Sum:
<b>Furu</b>	277	3 738	2 699		8	<b>6 722</b>
<b>Gran</b>	40	88 348	98 229	49	1 821	<b>188 487</b>
<b>Lauv</b>			2 740			<b>2 740</b>
<b>Sum:</b>	<b>317</b>	<b>92 086</b>	<b>103 668</b>	<b>49</b>	<b>1 829</b>	<b>197 949</b>

Volum (kbm)



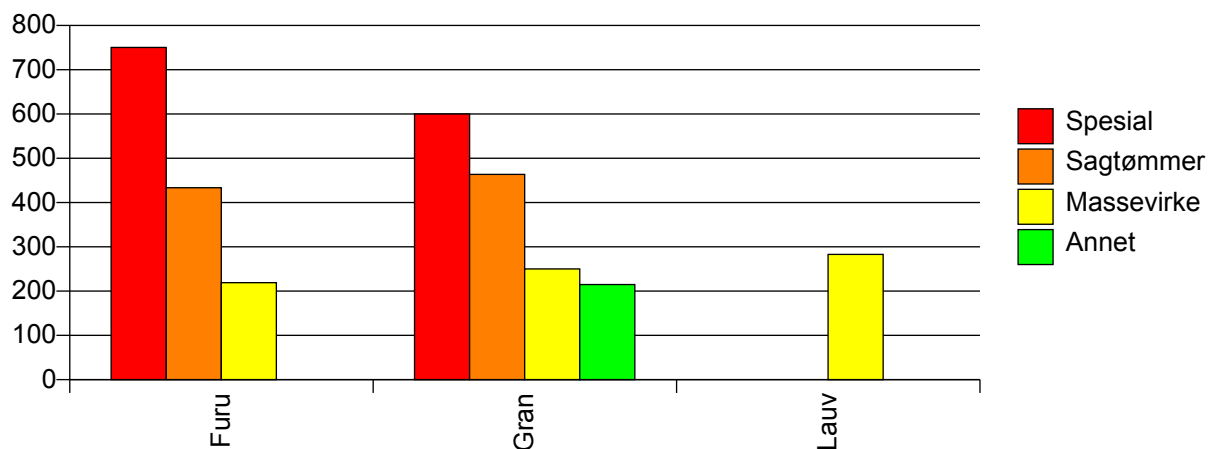
Volum (prosentfordelt)



### Gjennomsnittspris 2010 (kr/kbm)

	Spesial	Sagtømmer	Massevirke	Annet	Vrak	Snitt
<b>Furu</b>	750	434	219		0	<b>360</b>
<b>Gran</b>	600	464	250	215	0	<b>348</b>
<b>Lauv</b>			283			<b>283</b>
<b>Snitt</b>	<b>732</b>	<b>463</b>	<b>250</b>	<b>215</b>	<b>0</b>	<b>347</b>

Gjennomsnittspris (kr/kbm)

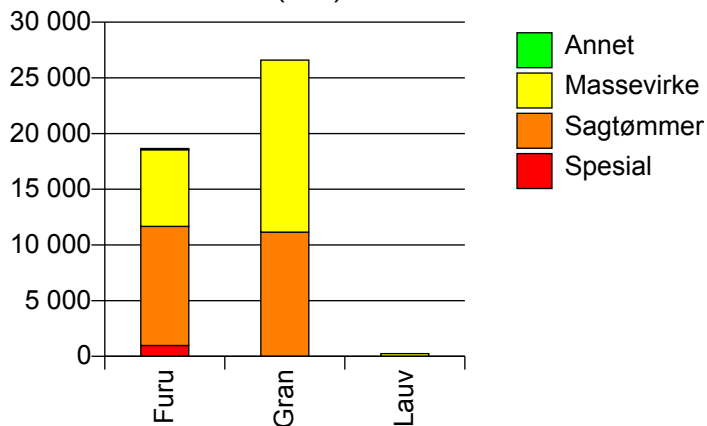


## 415 LØTEN

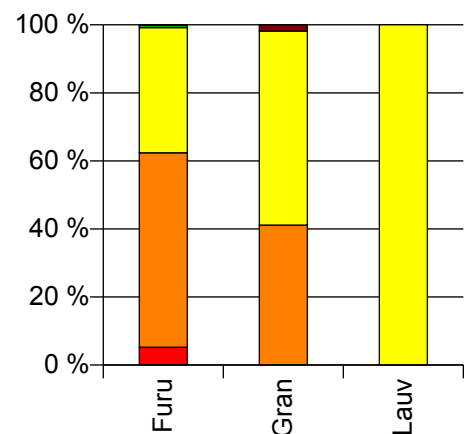
### Volum 2010 (kbm)

	Spesial	Sagtømmer	Massevirke	Annet	Vrak	Sum:
<b>Furu</b>	978	10 686	6 881	113	36	<b>18 694</b>
<b>Gran</b>		11 148	15 451		497	<b>27 096</b>
<b>Lauv</b>			244			<b>244</b>
<b>Sum:</b>	<b>978</b>	<b>21 834</b>	<b>22 576</b>	<b>113</b>	<b>533</b>	<b>46 034</b>

Volum (kbm)



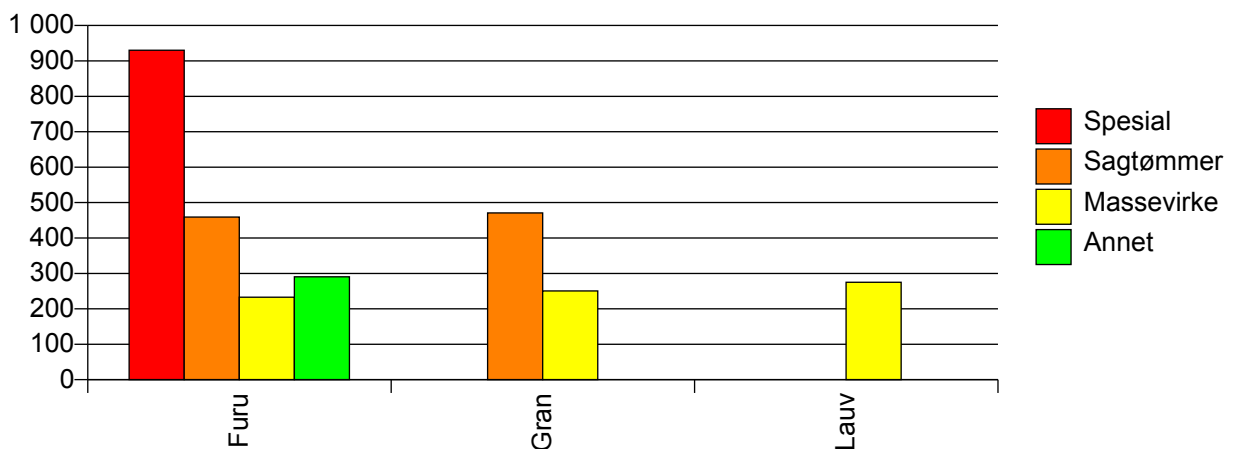
Volum (prosentfordelt)



### Gjennomsnittspris 2010 (kr/kbm)

	Spesial	Sagtømmer	Massevirke	Annet	Vrak	Snitt
<b>Furu</b>	930	459	233	290	0	<b>399</b>
<b>Gran</b>		471	250		0	<b>337</b>
<b>Lauv</b>			275			<b>275</b>
<b>Snitt</b>	<b>930</b>	<b>465</b>	<b>245</b>	<b>290</b>	<b>0</b>	<b>361</b>

Gjennomsnittspris (kr/kbm)

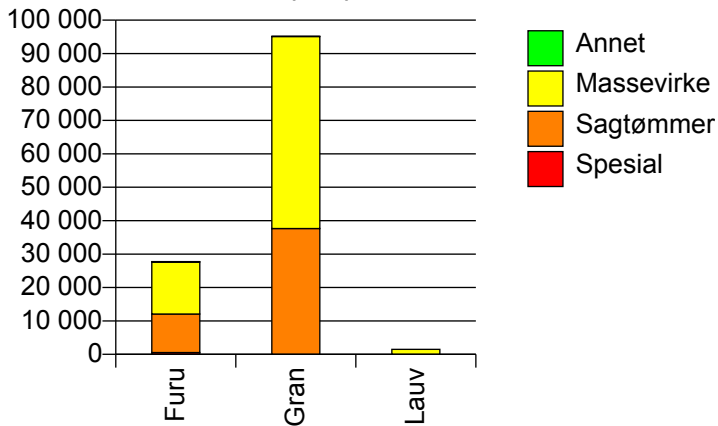


## 417 STANGE

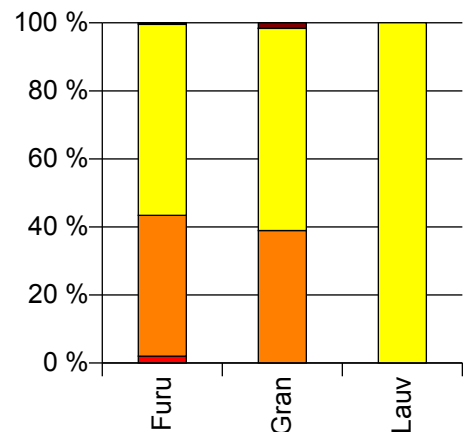
### Volum 2010 (kbm)

	Spesial	Sagtømmer	Massevirke	Annet	Vrak	Sum:
<b>Furu</b>	556	11 500	15 575	112	16	<b>27 759</b>
<b>Gran</b>		37 658	57 465	28	1 542	<b>96 693</b>
<b>Lauv</b>			1 508			<b>1 508</b>
<b>Sum:</b>	<b>556</b>	<b>49 158</b>	<b>74 548</b>	<b>140</b>	<b>1 558</b>	<b>125 960</b>

Volum (kbm)



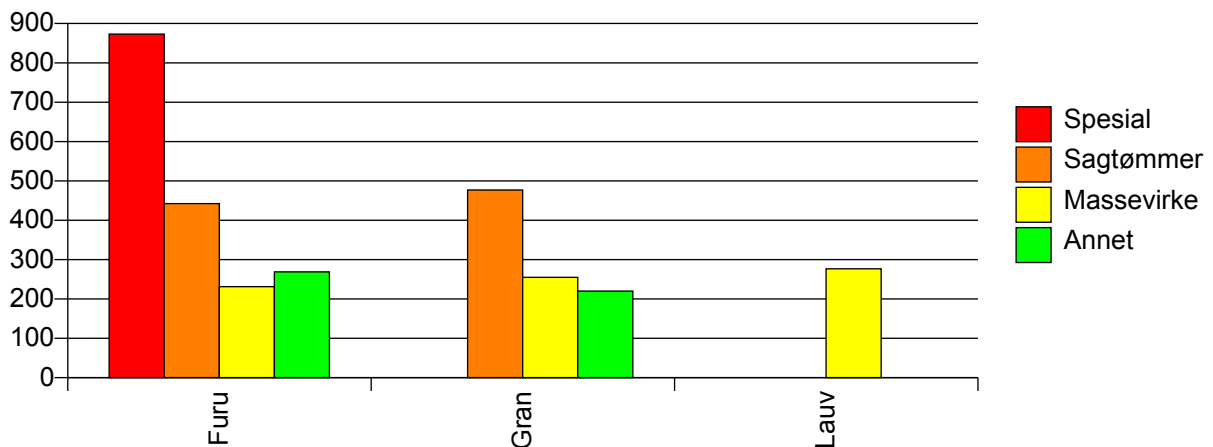
Volum (prosentfordelt)



### Gjennomsnittspris 2010 (kr/kbm)

	Spesial	Sagtømmer	Massevirke	Annet	Vrak	Snitt
<b>Furu</b>	873	442	231	269	0	<b>332</b>
<b>Gran</b>		477	255	220	0	<b>337</b>
<b>Lauv</b>			277			<b>277</b>
<b>Snitt</b>	<b>873</b>	<b>469</b>	<b>250</b>	<b>259</b>	<b>0</b>	<b>335</b>

Gjennomsnittspris (kr/kbm)

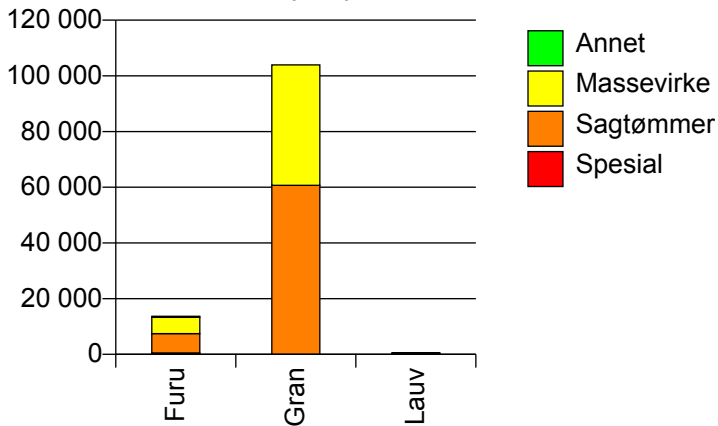


## 418 NORD-ODAL

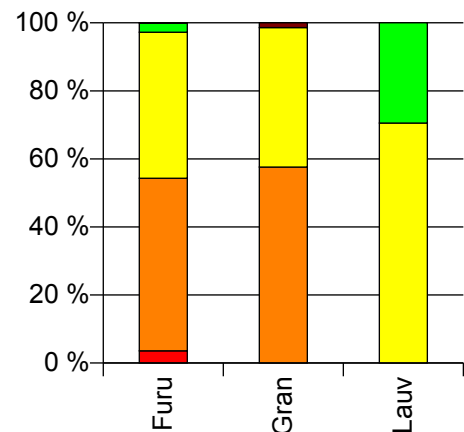
### Volum 2010 (kbm)

	Spesial	Sagtømmer	Massevirke	Annet	Vrak	Sum:
<b>Furu</b>	490	6 940	5 878	369	8	<b>13 685</b>
<b>Gran</b>	13	60 694	43 212		1 471	<b>105 390</b>
<b>Lauv</b>			371	155		<b>526</b>
<b>Sum:</b>	<b>503</b>	<b>67 634</b>	<b>49 461</b>	<b>524</b>	<b>1 479</b>	<b>119 601</b>

Volum (kbm)



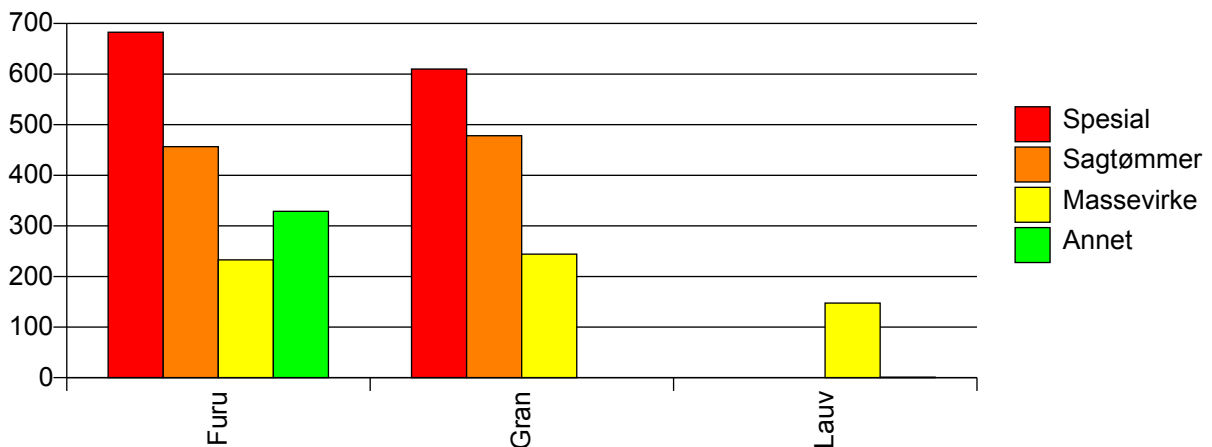
Volum (prosentfordelt)



### Gjennomsnittspris 2010 (kr/kbm)

	Spesial	Sagtømmer	Massevirke	Annet	Vrak	Snitt
<b>Furu</b>	683	457	233	329	0	<b>365</b>
<b>Gran</b>	610	478	244		0	<b>376</b>
<b>Lauv</b>			147	1		<b>104</b>
<b>Snitt</b>	<b>681</b>	<b>476</b>	<b>242</b>	<b>232</b>	<b>0</b>	<b>373</b>

Gjennomsnittspris (kr/kbm)



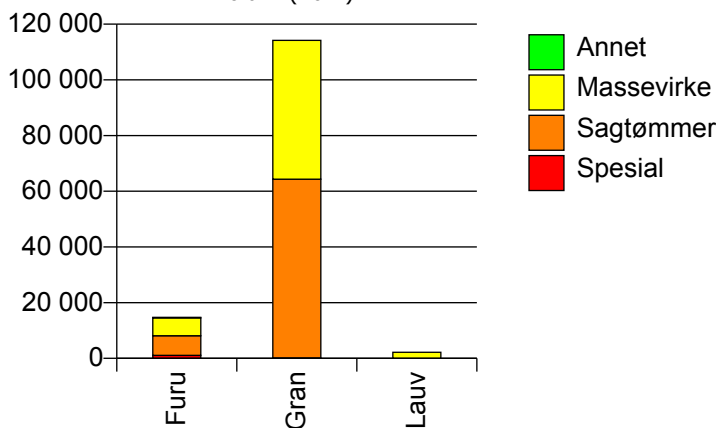


## 419 SØR-ODAL

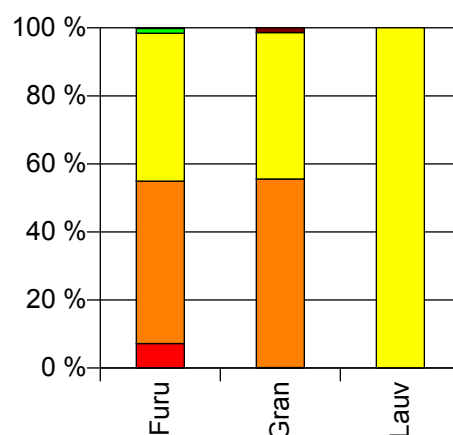
## Volum 2010 (kbm)

	Spesial	Sagtømmer	Massevirke	Annet	Vrak	Sum:
<b>Furu</b>	1 061	7 044	6 414	211	24	<b>14 754</b>
<b>Gran</b>	164	64 171	49 842		1 614	<b>115 791</b>
<b>Lauv</b>			2 158			<b>2 158</b>
<b>Sum:</b>	<b>1 225</b>	<b>71 215</b>	<b>58 414</b>	<b>211</b>	<b>1 638</b>	<b>132 703</b>

Volum (kbm)



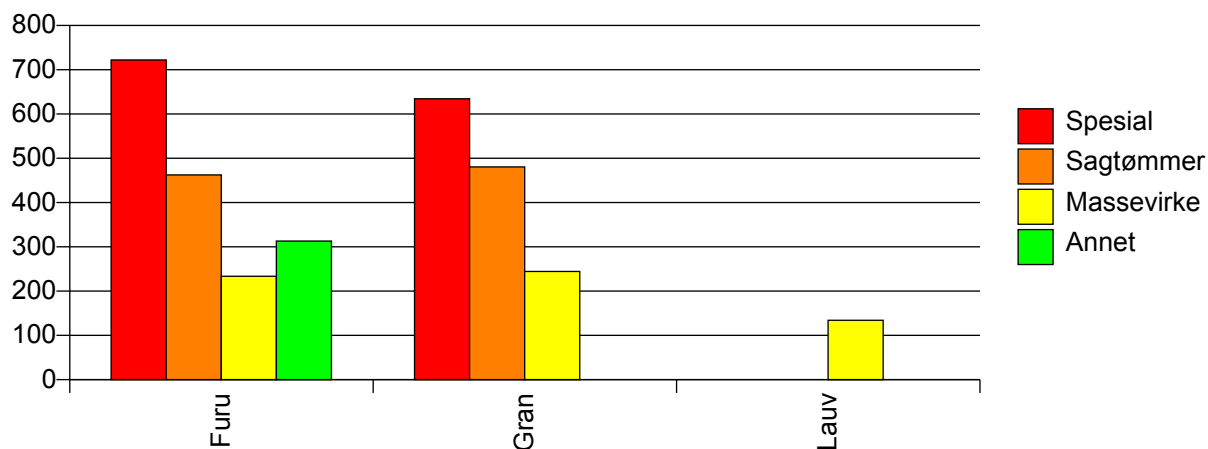
Volum (prosentfordelt)



## Gjennomsnittspris 2010 (kr/kbm)

	Spesial	Sagtømmer	Massevirke	Annet	Vrak	Snitt
<b>Furu</b>	722	463	234	313	0	<b>379</b>
<b>Gran</b>	635	480	244		0	<b>372</b>
<b>Lauv</b>			134			<b>134</b>
<b>Snitt</b>	<b>710</b>	<b>479</b>	<b>239</b>	<b>313</b>	<b>0</b>	<b>369</b>

Gjennomsnittspris (kr/kbm)

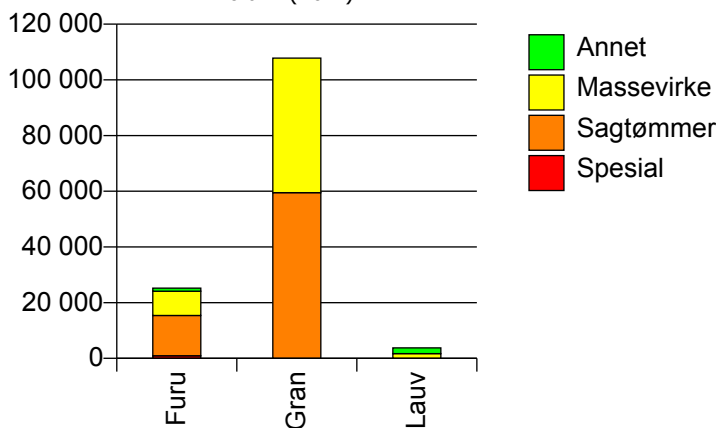


## 420 EIDSKOG

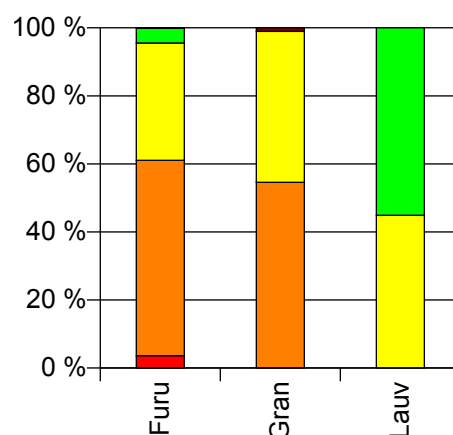
### Volum 2010 (kbm)

	Spesial	Sagtømmer	Massevirke	Annet	Vrak	Sum:
<b>Furu</b>	913	14 494	8 705	1 096	30	<b>25 238</b>
<b>Gran</b>		59 503	48 332		1 134	<b>108 969</b>
<b>Lauv</b>			1 694	2 078		<b>3 772</b>
<b>Sum:</b>	<b>913</b>	<b>73 997</b>	<b>58 731</b>	<b>3 174</b>	<b>1 164</b>	<b>137 979</b>

Volum (kbm)



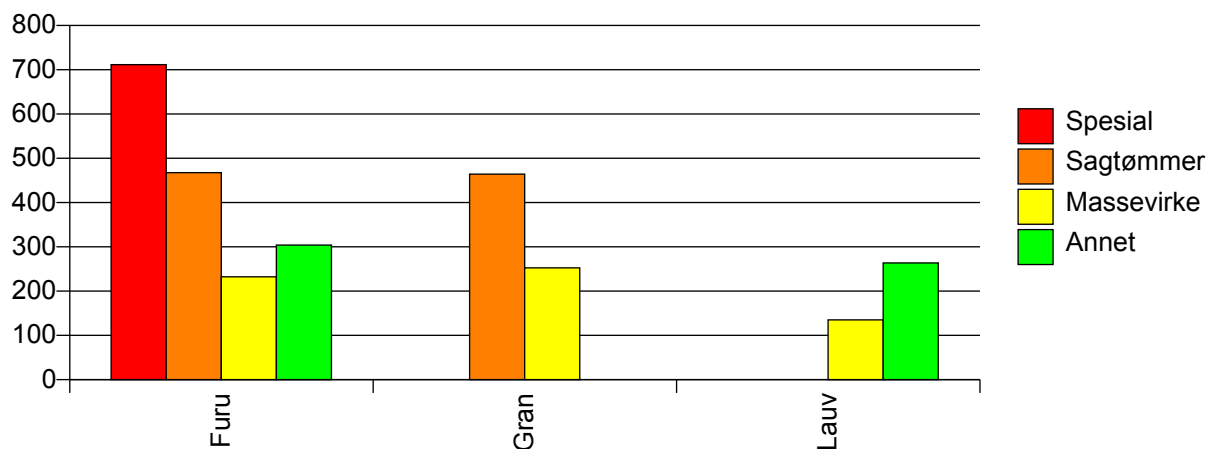
Volum (prosentfordelt)



### Gjennomsnittspris 2010 (kr/kbm)

	Spesial	Sagtømmer	Massevirke	Annet	Vrak	Snitt
<b>Furu</b>	712	468	232	304	0	<b>388</b>
<b>Gran</b>		464	253		0	<b>366</b>
<b>Lauv</b>			135	264		<b>206</b>
<b>Snitt</b>	<b>712</b>	<b>465</b>	<b>246</b>	<b>278</b>	<b>0</b>	<b>365</b>

Gjennomsnittspris (kr/kbm)

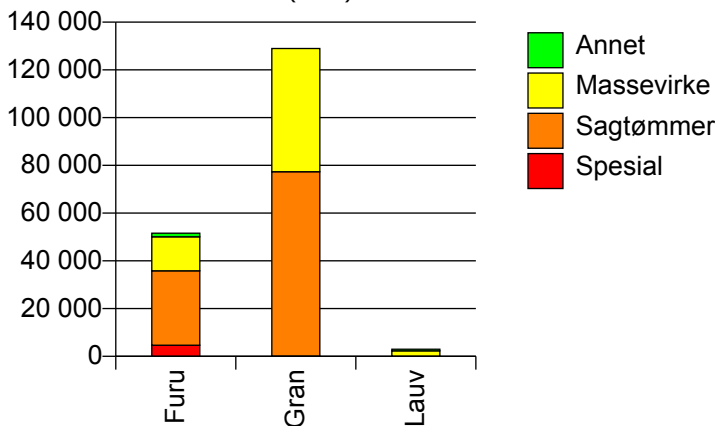


## 423 GRUE

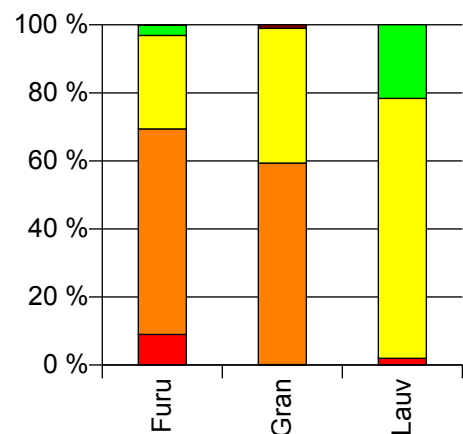
### Volum 2010 (kbm)

	Spesial	Sagtømmer	Massevirke	Annet	Vrak	Sum:
<b>Furu</b>	4 649	31 209	14 199	1 551	62	<b>51 670</b>
<b>Gran</b>	155	77 214	51 601	14	1 350	<b>130 334</b>
<b>Lauv</b>	59		2 286	647		<b>2 992</b>
<b>Sum:</b>	<b>4 863</b>	<b>108 423</b>	<b>68 086</b>	<b>2 212</b>	<b>1 412</b>	<b>184 996</b>

Volum (kbm)



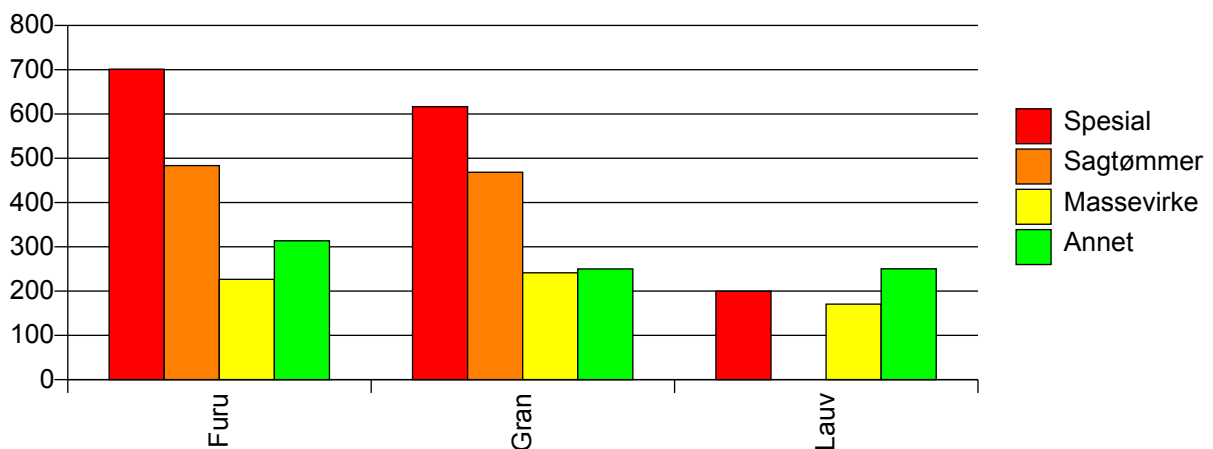
Volum (prosentfordelt)



### Gjennomsnittspris 2010 (kr/kbm)

	Spesial	Sagtømmer	Massevirke	Annet	Vrak	Snitt
<b>Furu</b>	701	484	227	314	0	<b>427</b>
<b>Gran</b>	617	469	241	250	0	<b>374</b>
<b>Lauv</b>	200		171	251		<b>188</b>
<b>Snitt</b>	<b>692</b>	<b>473</b>	<b>236</b>	<b>295</b>	<b>0</b>	<b>386</b>

Gjennomsnittspris (kr/kbm)

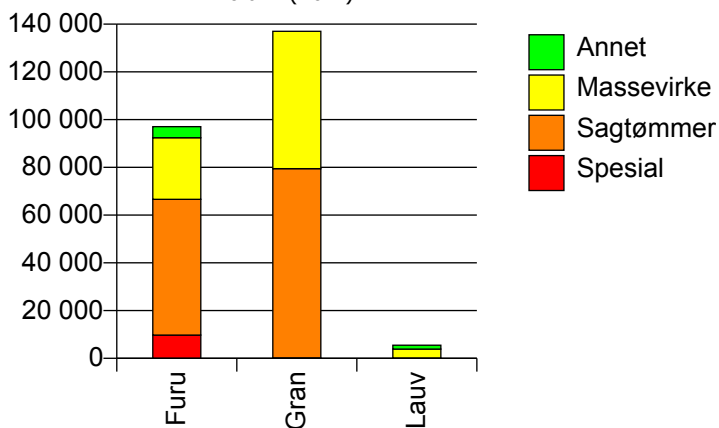


## 425 ÅSNES

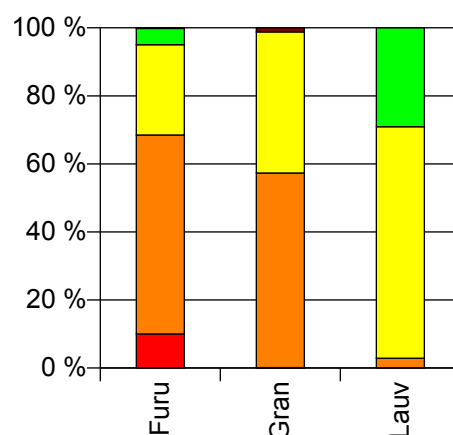
## Volum 2010 (kbm)

	Spesial	Sagtømmer	Massevirke	Annet	Vrak	Sum:
<b>Furu</b>	9 756	56 864	25 801	4 665	162	<b>97 248</b>
<b>Gran</b>	181	79 314	57 522	17	1 650	<b>138 684</b>
<b>Lauv</b>		159	3 738	1 598		<b>5 495</b>
<b>Sum:</b>	<b>9 937</b>	<b>136 337</b>	<b>87 061</b>	<b>6 280</b>	<b>1 812</b>	<b>241 427</b>

Volum (kbm)



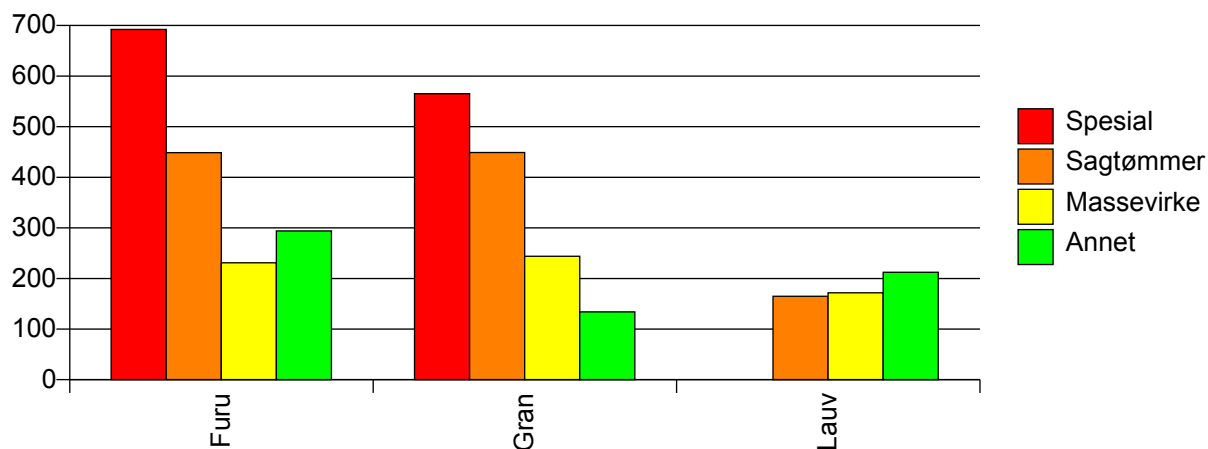
Volum (prosentfordelt)



## Gjennomsnittspris 2010 (kr/kbm)

	Spesial	Sagtømmer	Massevirke	Annet	Vrak	Snitt
<b>Furu</b>	692	449	231	294	0	<b>407</b>
<b>Gran</b>	565	449	244	134	0	<b>359</b>
<b>Lauv</b>		165	172	212		<b>183</b>
<b>Snitt</b>	<b>690</b>	<b>449</b>	<b>237</b>	<b>273</b>	<b>0</b>	<b>374</b>

Gjennomsnittspris (kr/kbm)

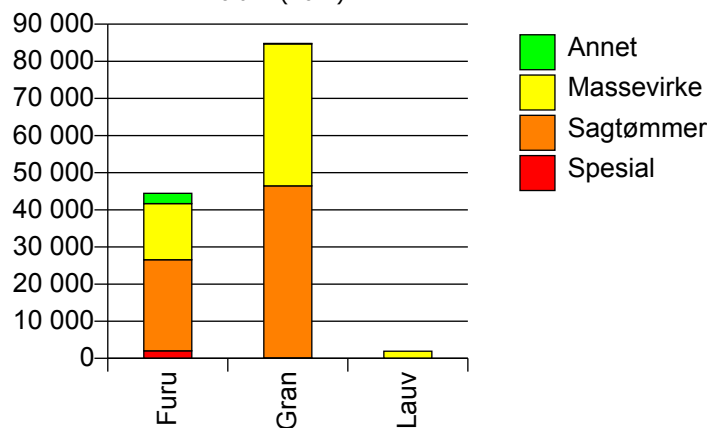


## 426 VÅLER I SOLØR

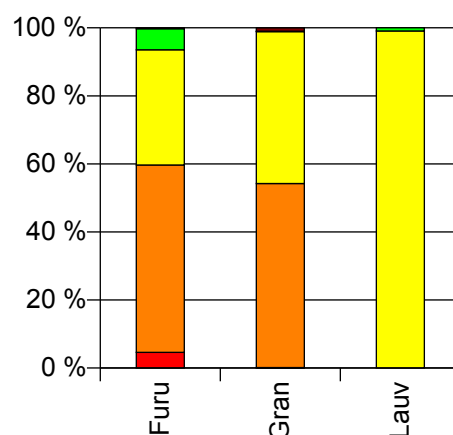
## Volum 2010 (kbm)

	Spesial	Sagtømmer	Massevirke	Annet	Vrak	Sum:
<b>Furu</b>	2 044	24 532	15 097	2 761	108	<b>44 542</b>
<b>Gran</b>	121	46 344	38 241	108	851	<b>85 665</b>
<b>Lauv</b>			1 905	18		<b>1 923</b>
<b>Sum:</b>	<b>2 165</b>	<b>70 876</b>	<b>55 243</b>	<b>2 887</b>	<b>959</b>	<b>132 130</b>

Volum (kbm)



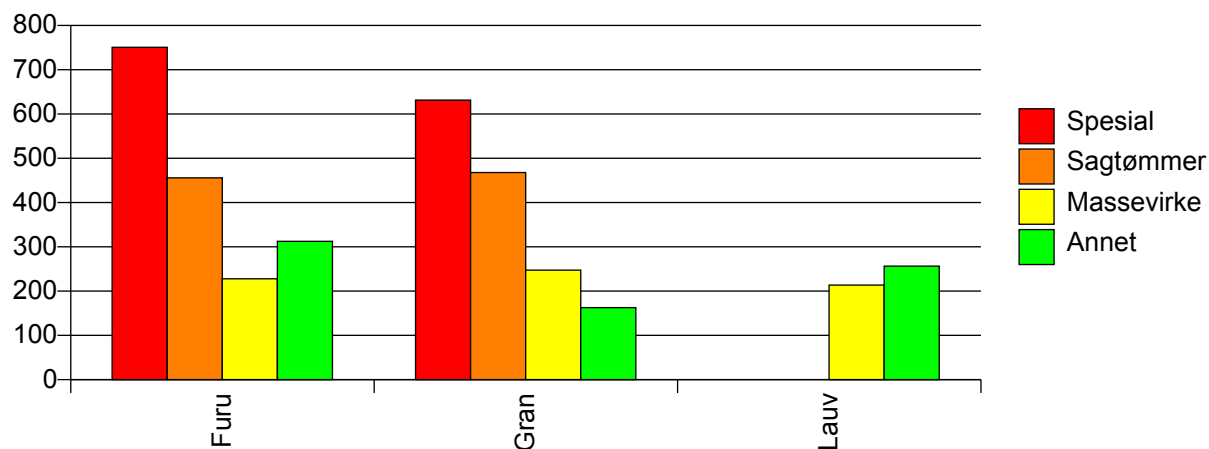
Volum (prosentfordelt)



## Gjennomsnittspris 2010 (kr/kbm)

	Spesial	Sagtømmer	Massevirke	Annet	Vrak	Snitt
<b>Furu</b>	751	456	228	313	0	<b>382</b>
<b>Gran</b>	632	468	247	163	0	<b>365</b>
<b>Lauv</b>			214	256		<b>214</b>
<b>Snitt</b>	<b>744</b>	<b>464</b>	<b>241</b>	<b>307</b>	<b>0</b>	<b>368</b>

Gjennomsnittspris (kr/kbm)

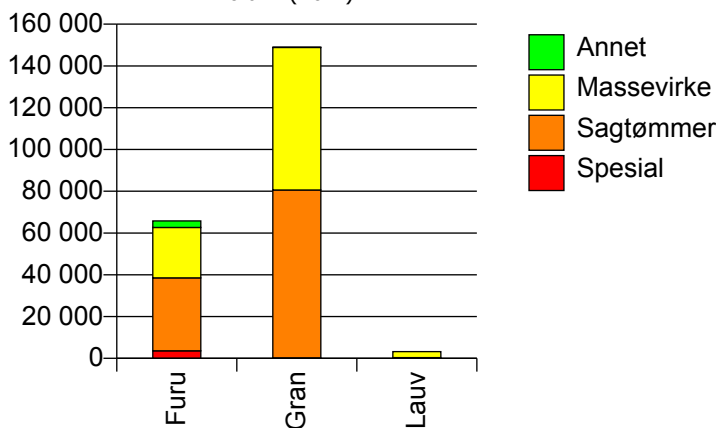


## 427 ELVERUM

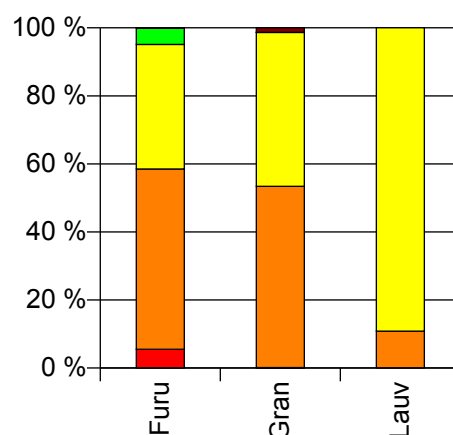
## Volum 2010 (kbm)

	Spesial	Sagtømmer	Massevirke	Annet	Vrak	Sum:
<b>Furu</b>	3 623	34 912	24 106	3 139	72	<b>65 852</b>
<b>Gran</b>	205	80 374	68 277	63	2 000	<b>150 919</b>
<b>Lauv</b>		351	2 889			<b>3 240</b>
<b>Sum:</b>	<b>3 828</b>	<b>115 637</b>	<b>95 272</b>	<b>3 202</b>	<b>2 072</b>	<b>220 011</b>

Volum (kbm)



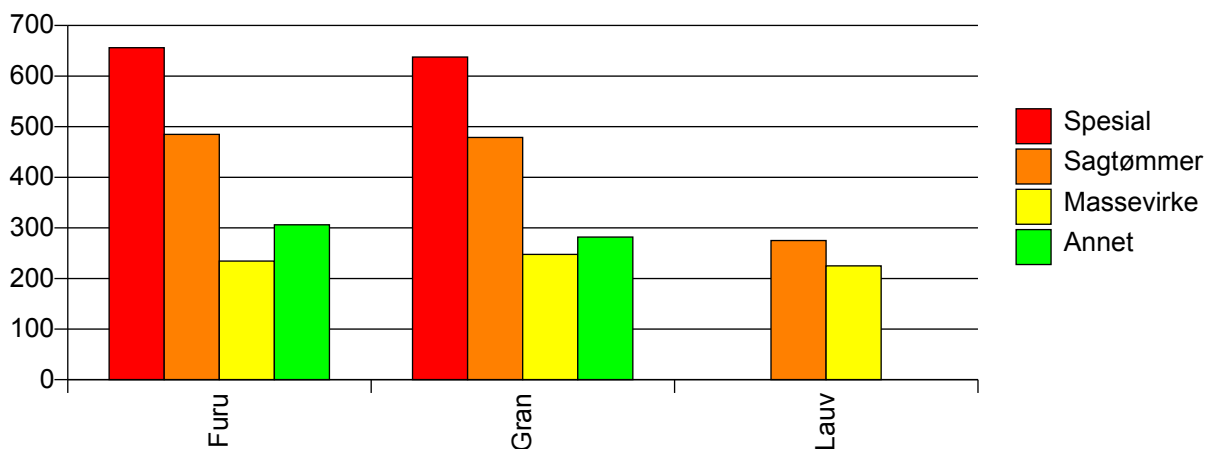
Volum (prosentfordelt)



## Gjennomsnittspris 2010 (kr/kbm)

	Spesial	Sagtømmer	Massevirke	Annet	Vrak	Snitt
<b>Furu</b>	656	485	234	306	0	<b>393</b>
<b>Gran</b>	638	479	248	282	0	<b>368</b>
<b>Lauv</b>		275	225			<b>230</b>
<b>Snitt</b>	<b>655</b>	<b>480</b>	<b>244</b>	<b>306</b>	<b>0</b>	<b>374</b>

Gjennomsnittspris (kr/kbm)

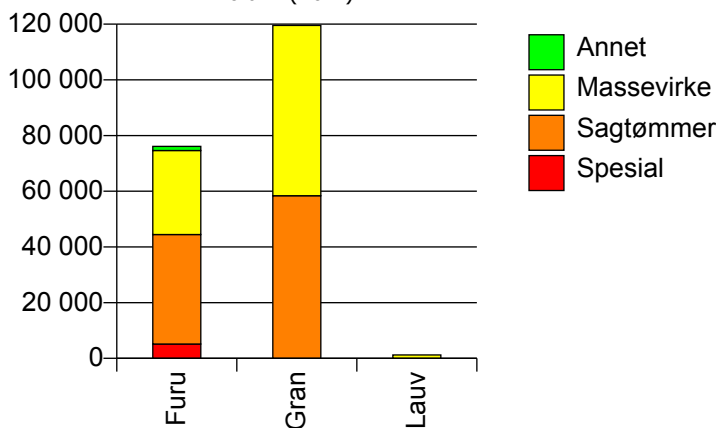


## 428 TRYSIL

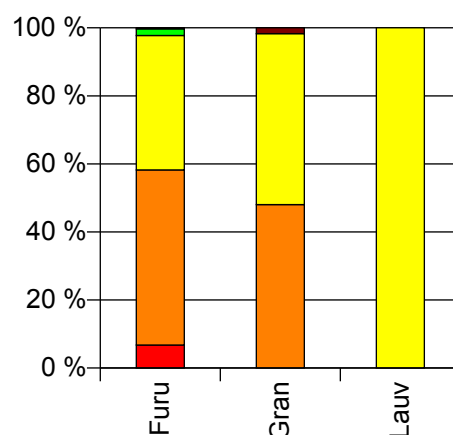
## Volum 2010 (kbm)

	Spesial	Sagtømmer	Massevirke	Annet	Vrak	Sum:
<b>Furu</b>	5 153	39 315	30 179	1 475	239	<b>76 361</b>
<b>Gran</b>	37	58 373	61 144		2 070	<b>121 624</b>
<b>Lauv</b>			1 240			<b>1 240</b>
<b>Sum:</b>	<b>5 190</b>	<b>97 688</b>	<b>92 563</b>	<b>1 475</b>	<b>2 309</b>	<b>199 225</b>

Volum (kbm)



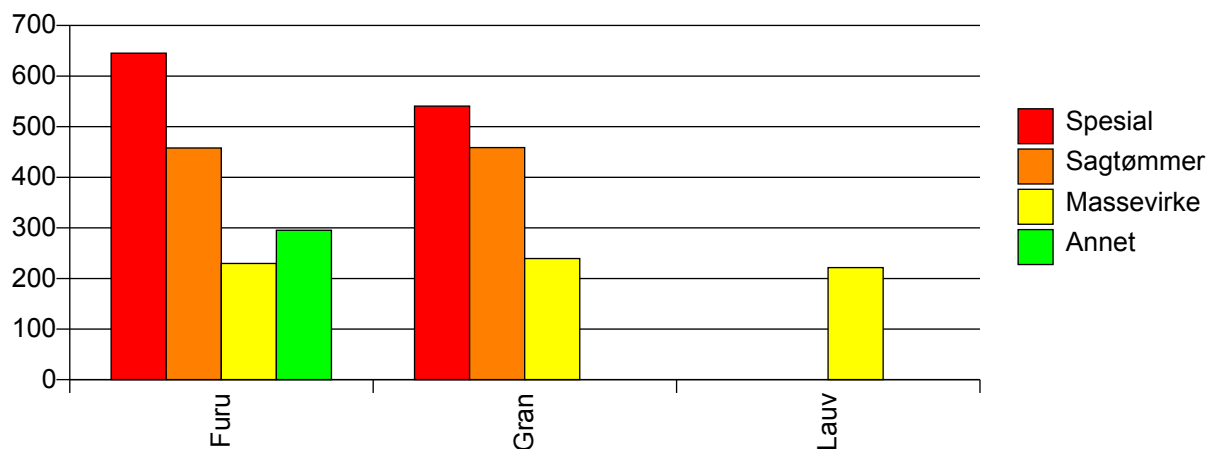
Volum (prosentfordelt)



## Gjennomsnittspris 2010 (kr/kbm)

	Spesial	Sagtømmer	Massevirke	Annet	Vrak	Snitt
<b>Furu</b>	645	458	230	295	0	<b>376</b>
<b>Gran</b>	541	459	240		0	<b>341</b>
<b>Lauv</b>			222			<b>222</b>
<b>Snitt</b>	<b>645</b>	<b>458</b>	<b>236</b>	<b>295</b>	<b>0</b>	<b>353</b>

Gjennomsnittspris (kr/kbm)

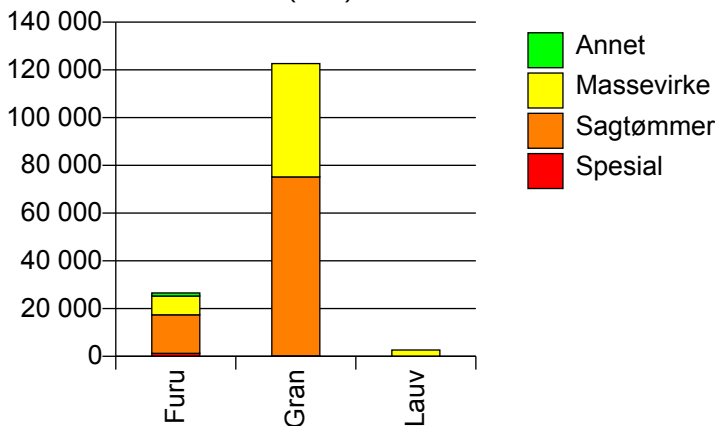


## 429 ÅMOT

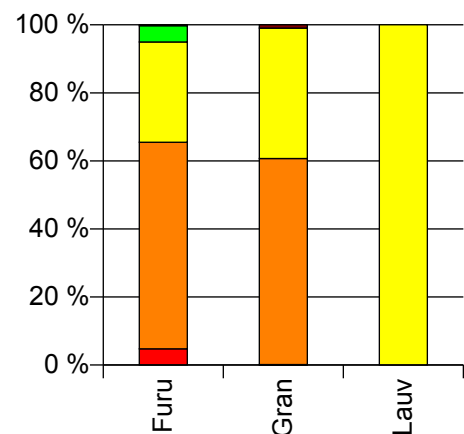
## Volum 2010 (kbm)

	Spesial	Sagtømmer	Massevirke	Annet	Vrak	Sum:
<b>Furu</b>	1 263	16 164	7 853	1 271	66	<b>26 617</b>
<b>Gran</b>	171	74 993	47 495		1 179	<b>123 838</b>
<b>Lauv</b>			2 652			<b>2 652</b>
<b>Sum:</b>	<b>1 434</b>	<b>91 157</b>	<b>58 000</b>	<b>1 271</b>	<b>1 245</b>	<b>153 107</b>

Volum (kbm)



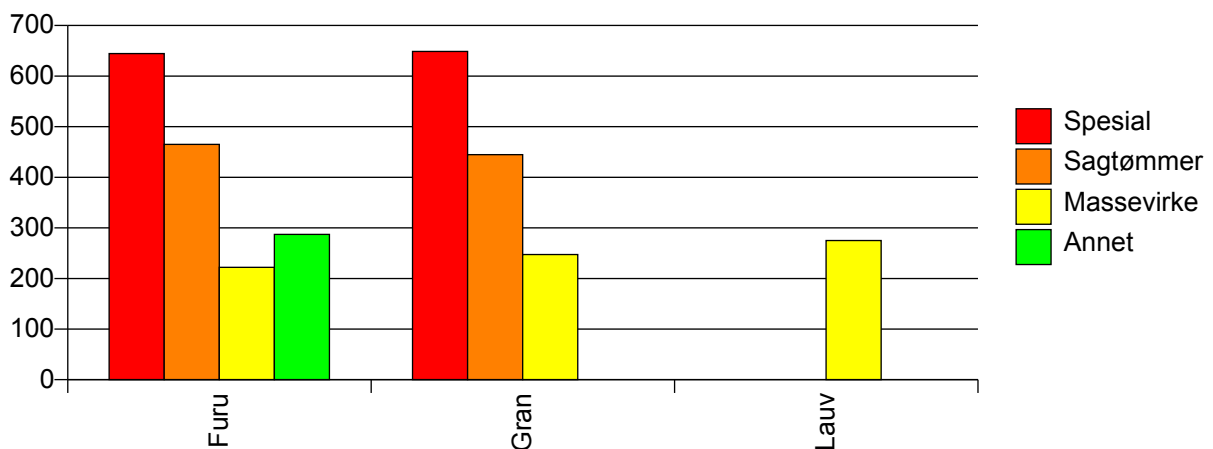
Volum (prosentfordelt)



## Gjennomsnittspris 2010 (kr/kbm)

	Spesial	Sagtømmer	Massevirke	Annet	Vrak	Snitt
<b>Furu</b>	645	465	222	287	0	<b>392</b>
<b>Gran</b>	649	445	247		0	<b>365</b>
<b>Lauv</b>			275			<b>275</b>
<b>Snitt</b>	<b>645</b>	<b>448</b>	<b>245</b>	<b>287</b>	<b>0</b>	<b>368</b>

Gjennomsnittspris (kr/kbm)



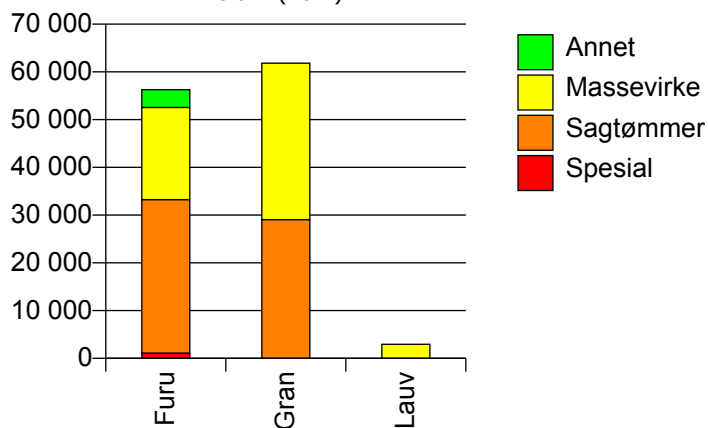


## 430 STOR-ELVDAL

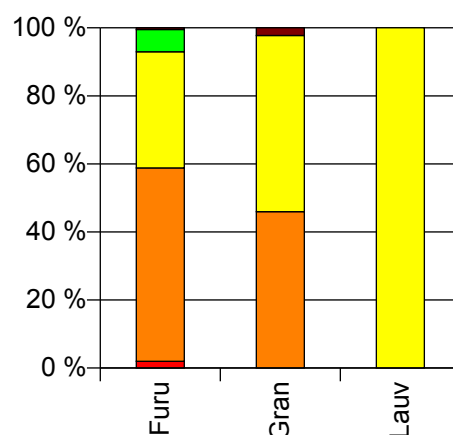
## Volum 2010 (kbm)

	Spesial	Sagtømmer	Massevirke	Annet	Vrak	Sum:
<b>Furu</b>	1 112	32 145	19 304	3 718	266	<b>56 545</b>
<b>Gran</b>	23	29 045	32 750		1 432	<b>63 250</b>
<b>Lauv</b>			2 942			<b>2 942</b>
<b>Sum:</b>	<b>1 135</b>	<b>61 190</b>	<b>54 996</b>	<b>3 718</b>	<b>1 698</b>	<b>122 737</b>

Volum (kbm)



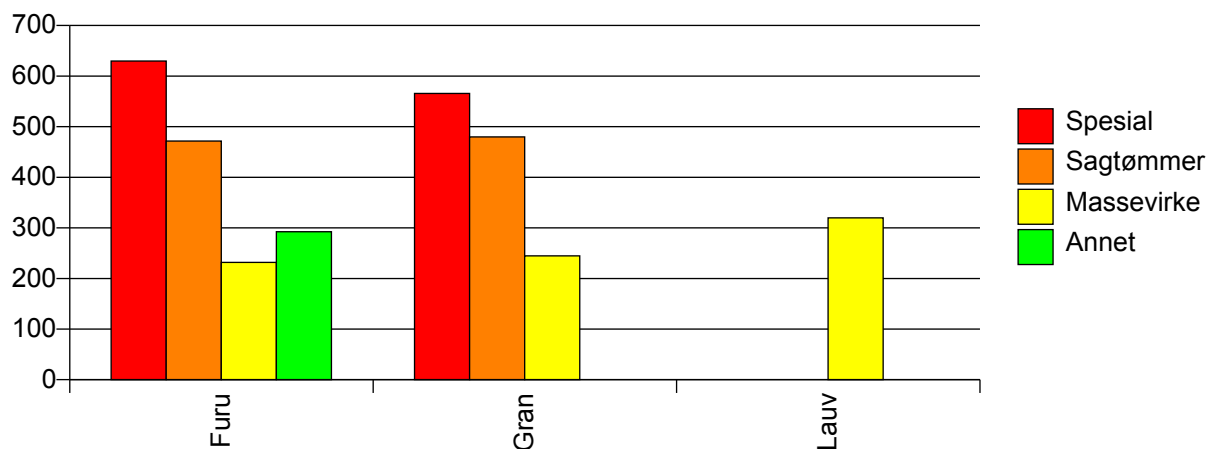
Volum (prosentfordelt)



## Gjennomsnittspris 2010 (kr/kbm)

	Spesial	Sagtømmer	Massevirke	Annet	Vrak	Snitt
<b>Furu</b>	630	472	232	292	0	<b>379</b>
<b>Gran</b>	566	480	245		0	<b>347</b>
<b>Lauv</b>			320			<b>320</b>
<b>Snitt</b>	<b>628</b>	<b>476</b>	<b>244</b>	<b>292</b>	<b>0</b>	<b>361</b>

Gjennomsnittspris (kr/kbm)

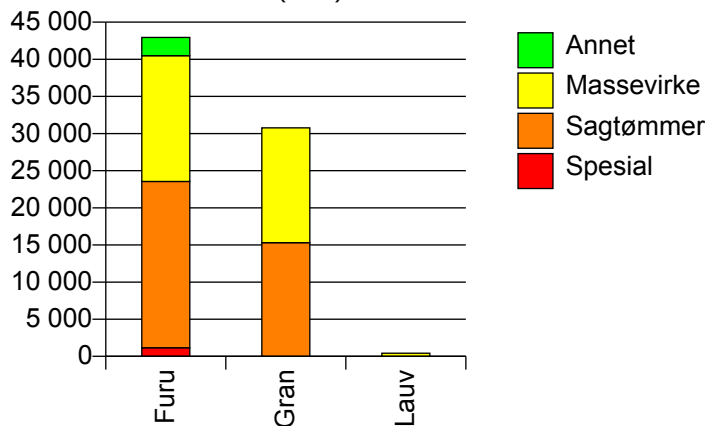


## 432 RENDALEN

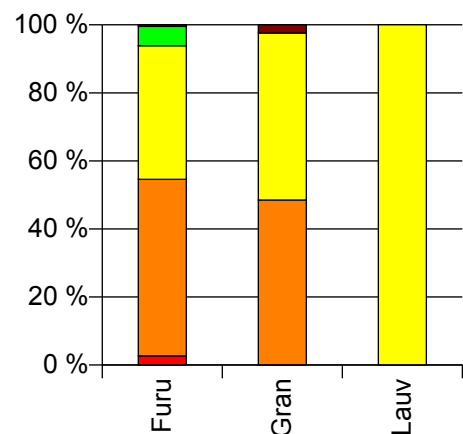
## Volum 2010 (kbm)

	Spesial	Sagtømmer	Massevirke	Annet	Vrak	Sum:
<b>Furu</b>	1 155	22 398	16 930	2 462	188	<b>43 133</b>
<b>Gran</b>	1	15 300	15 477		758	<b>31 536</b>
<b>Lauv</b>			423			<b>423</b>
<b>Sum:</b>	<b>1 156</b>	<b>37 698</b>	<b>32 830</b>	<b>2 462</b>	<b>946</b>	<b>75 092</b>

Volum (kbm)



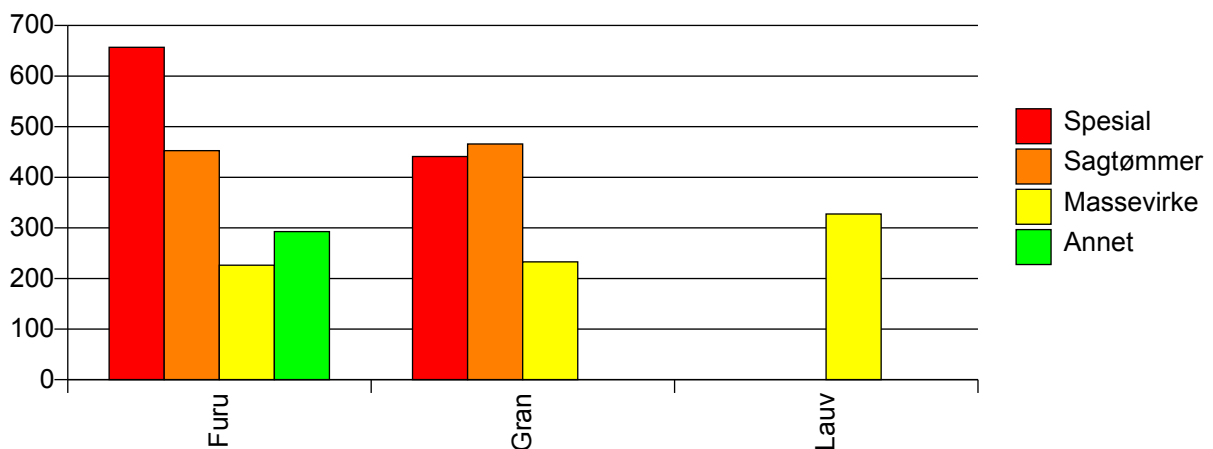
Volum (prosentfordelt)



## Gjennomsnittspris 2010 (kr/kbm)

	Spesial	Sagtømmer	Massevirke	Annet	Vrak	Snitt
<b>Furu</b>	657	453	226	293	0	<b>358</b>
<b>Gran</b>	441	466	233		0	<b>340</b>
<b>Lauv</b>			327			<b>327</b>
<b>Snitt</b>	<b>657</b>	<b>458</b>	<b>231</b>	<b>293</b>	<b>0</b>	<b>350</b>

Gjennomsnittspris (kr/kbm)

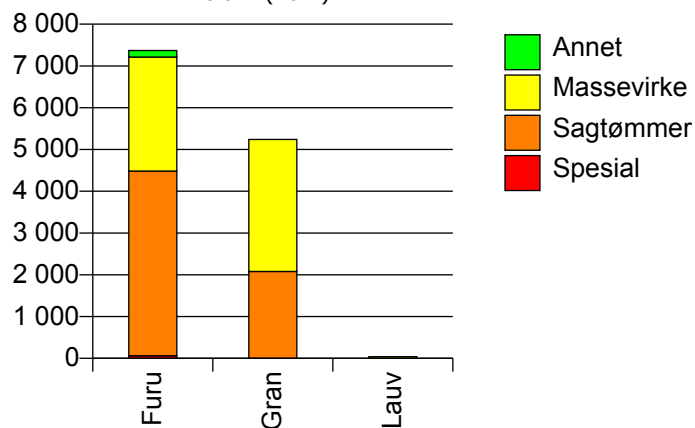


## 434 ENGERDAL

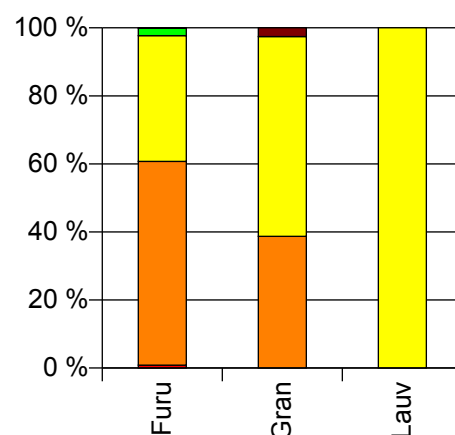
## Volum 2010 (kbm)

	Spesial	Sagtømmer	Massevirke	Annet	Vrak	Sum:
<b>Furu</b>	63	4 421	2 729	158	11	<b>7 382</b>
<b>Gran</b>		2 081	3 158		137	<b>5 376</b>
<b>Lauv</b>			39			<b>39</b>
<b>Sum:</b>	<b>63</b>	<b>6 502</b>	<b>5 926</b>	<b>158</b>	<b>148</b>	<b>12 797</b>

Volum (kbm)



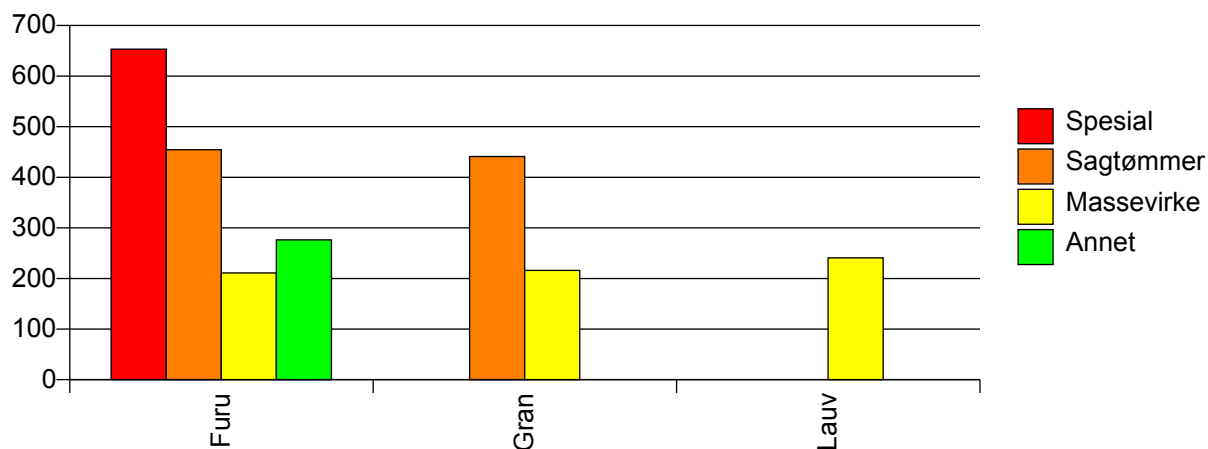
Volum (prosentfordelt)



## Gjennomsnittspris 2010 (kr/kbm)

	Spesial	Sagtømmer	Massevirke	Annet	Vrak	Snitt
<b>Furu</b>	653	454	211	276	0	<b>362</b>
<b>Gran</b>		441	216		0	<b>298</b>
<b>Lauv</b>			241			<b>241</b>
<b>Snitt</b>	<b>653</b>	<b>450</b>	<b>214</b>	<b>276</b>	<b>0</b>	<b>334</b>

Gjennomsnittspris (kr/kbm)

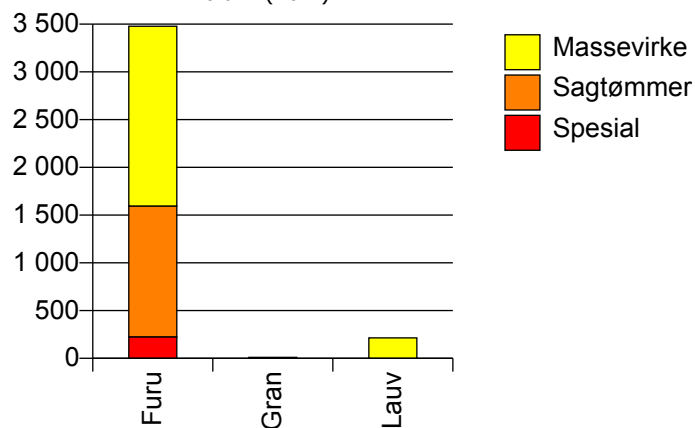


## 436 TOLGA

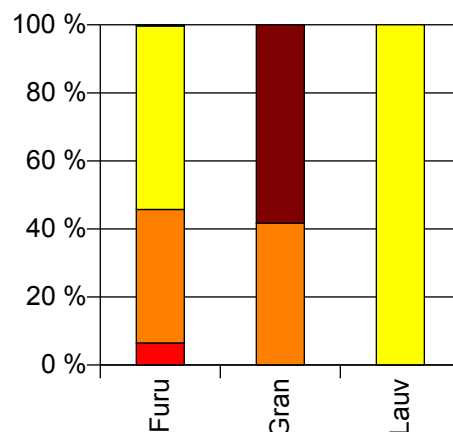
### Volum 2010 (kbm)

	Spesial	Sagtømmer	Massevirke	Vrak	Sum:
<b>Furu</b>	226	1 370	1 883	11	<b>3 490</b>
<b>Gran</b>		10		14	<b>24</b>
<b>Lauv</b>			215		<b>215</b>
<b>Sum:</b>	<b>226</b>	<b>1 380</b>	<b>2 098</b>	<b>25</b>	<b>3 729</b>

Volum (kbm)



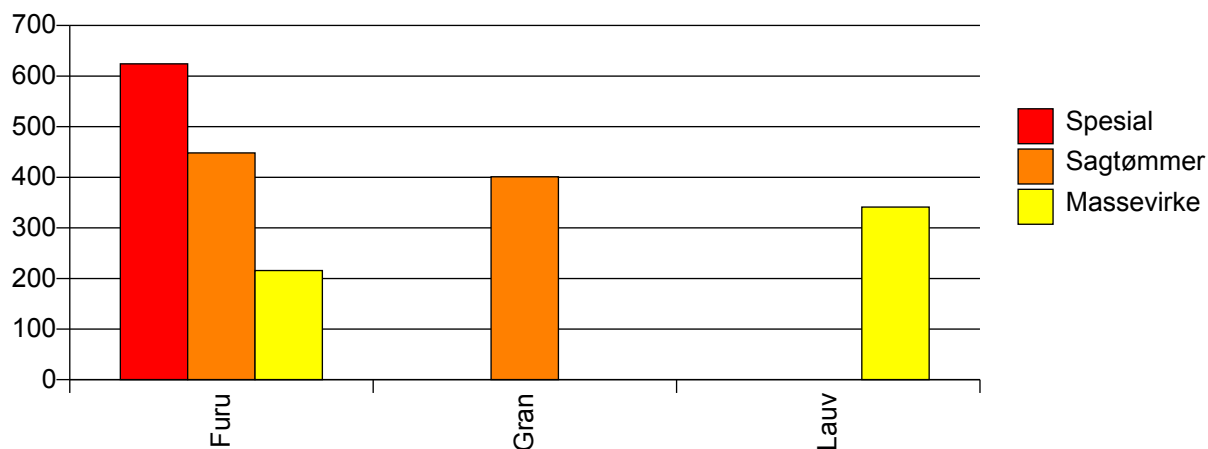
Volum (prosentfordelt)



### Gjennomsnittspris 2010 (kr/kbm)

	Spesial	Sagtømmer	Massevirke	Vrak	Snitt
<b>Furu</b>	624	448	216	0	<b>333</b>
<b>Gran</b>		401		0	<b>167</b>
<b>Lauv</b>			341		<b>341</b>
<b>Snitt</b>	<b>624</b>	<b>448</b>	<b>229</b>	<b>0</b>	<b>332</b>

Gjennomsnittspris (kr/kbm)

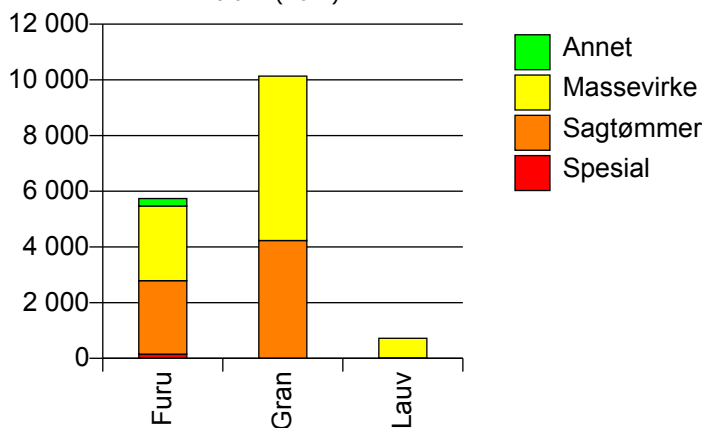


## 437 TYNSET

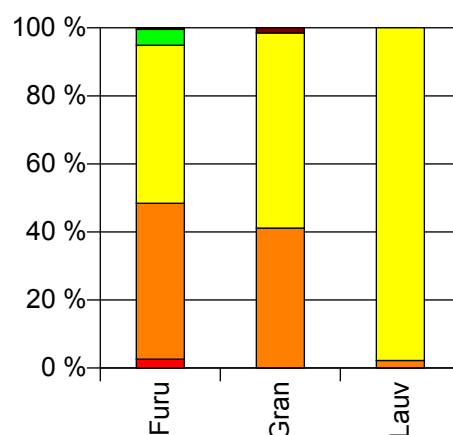
## Volum 2010 (kbm)

	Spesial	Sagtømmer	Massevirke	Annet	Vrak	Sum:
<b>Furu</b>	151	2 640	2 680	268	26	<b>5 765</b>
<b>Gran</b>		4 233	5 901		154	<b>10 288</b>
<b>Lauv</b>		16	707			<b>723</b>
<b>Sum:</b>	<b>151</b>	<b>6 889</b>	<b>9 288</b>	<b>268</b>	<b>180</b>	<b>16 776</b>

Volum (kbm)



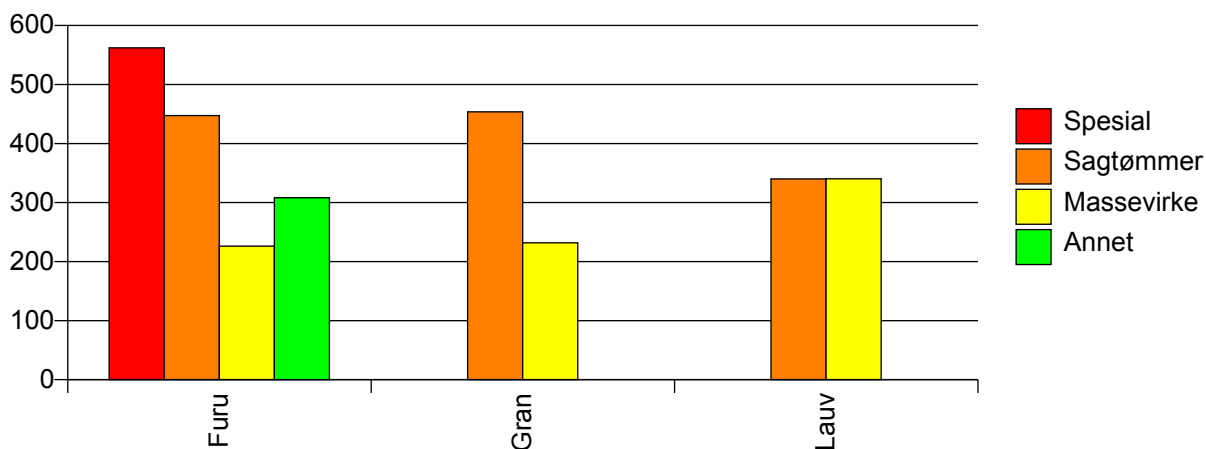
Volum (prosentfordelt)



## Gjennomsnittspris 2010 (kr/kbm)

	Spesial	Sagtømmer	Massevirke	Annet	Vrak	Snitt
<b>Furu</b>	562	447	226	308	0	<b>339</b>
<b>Gran</b>		454	232		0	<b>320</b>
<b>Lauv</b>		340	340			<b>340</b>
<b>Snitt</b>	<b>562</b>	<b>451</b>	<b>238</b>	<b>308</b>	<b>0</b>	<b>327</b>

Gjennomsnittspris (kr/kbm)

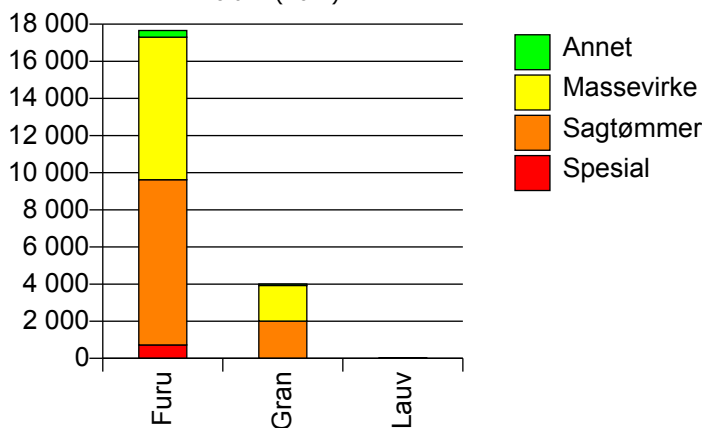


## 438 ALVDAL

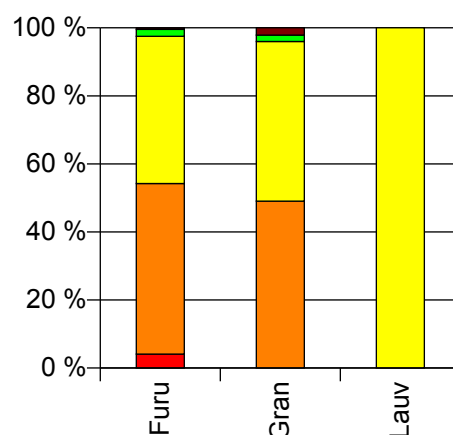
## Volum 2010 (kbm)

	Spesial	Sagtømmer	Massevirke	Annet	Vrak	Sum:
<b>Furu</b>	725	8 895	7 677	362	80	<b>17 739</b>
<b>Gran</b>		2 006	1 919	77	87	<b>4 089</b>
<b>Lauv</b>			26			<b>26</b>
<b>Sum:</b>	<b>725</b>	<b>10 901</b>	<b>9 622</b>	<b>439</b>	<b>167</b>	<b>21 854</b>

Volum (kbm)



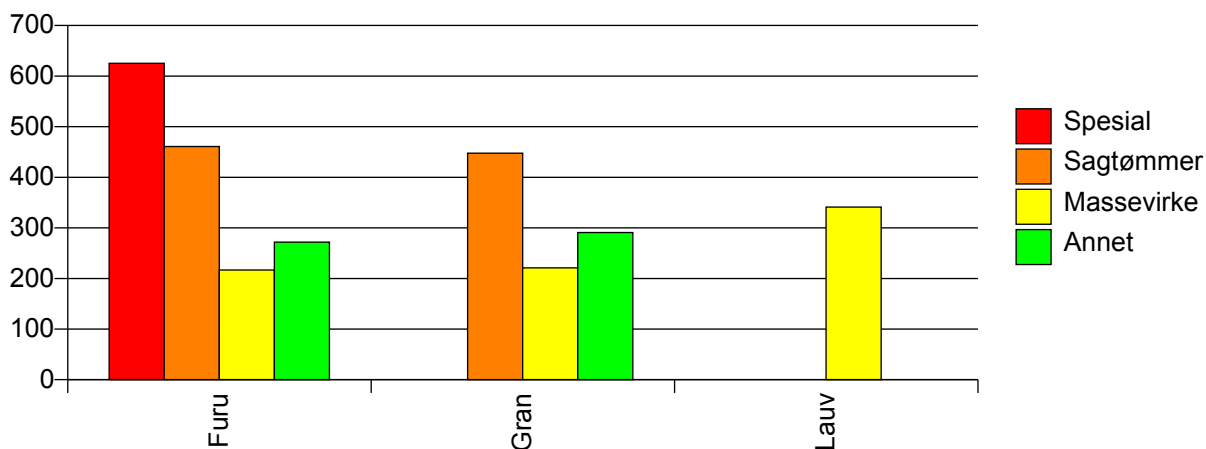
Volum (prosentfordelt)



## Gjennomsnittspris 2010 (kr/kbm)

	Spesial	Sagtømmer	Massevirke	Annet	Vrak	Snitt
<b>Furu</b>	625	461	217	272	0	<b>356</b>
<b>Gran</b>		448	221	291	0	<b>329</b>
<b>Lauv</b>			341			<b>341</b>
<b>Snitt</b>	<b>625</b>	<b>458</b>	<b>218</b>	<b>275</b>	<b>0</b>	<b>351</b>

Gjennomsnittspris (kr/kbm)

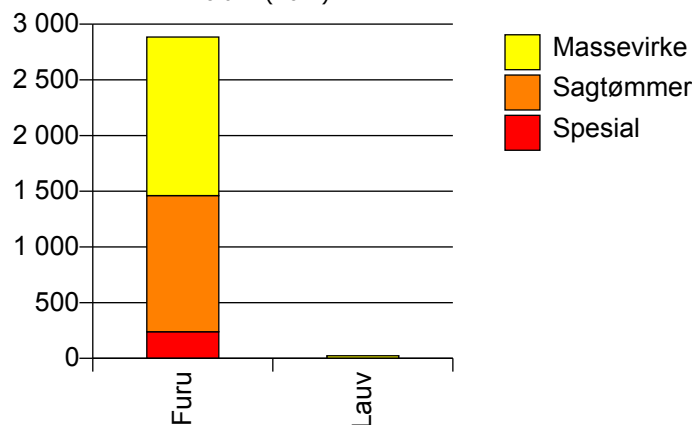


## 439 FOLLDAL

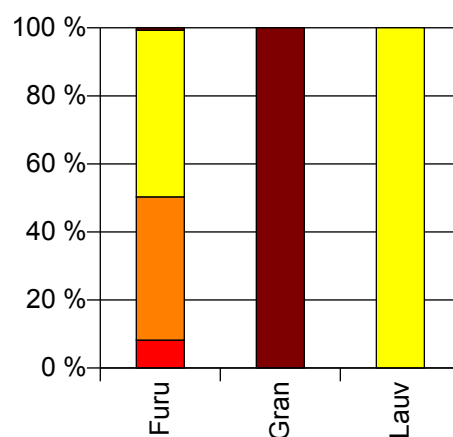
## Volum 2010 (kbm)

	Spesial	Sagtømmer	Massevirke	Vrak	Sum:
<b>Furu</b>	239	1 222	1 423	20	<b>2 904</b>
<b>Gran</b>				4	<b>4</b>
<b>Lauv</b>			23		<b>23</b>
<b>Sum:</b>	<b>239</b>	<b>1 222</b>	<b>1 446</b>	<b>24</b>	<b>2 931</b>

Volum (kbm)



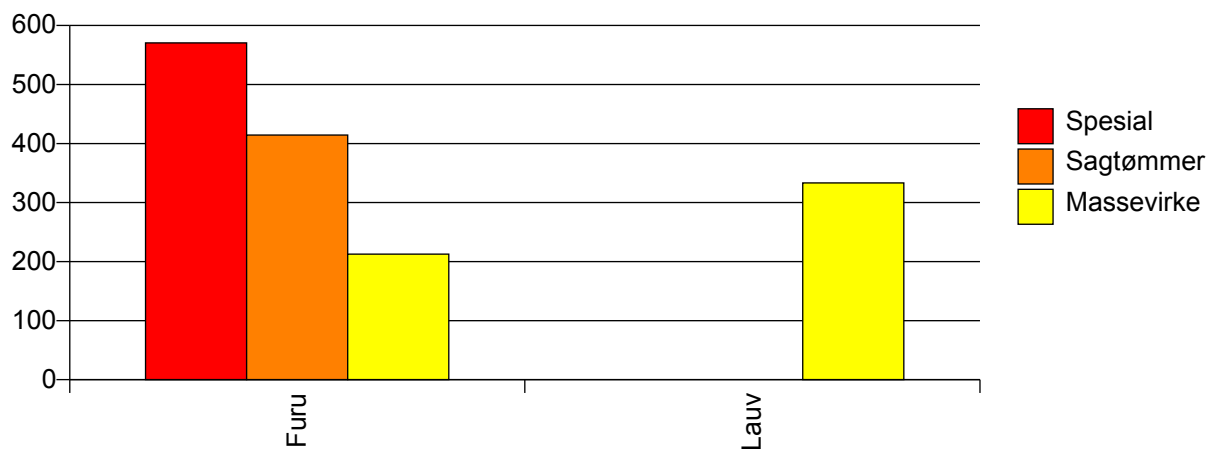
Volum (prosentfordelt)



## Gjennomsnittspris 2010 (kr/kbm)

	Spesial	Sagtømmer	Massevirke	Vrak	Snitt
<b>Furu</b>	571	415	213	0	<b>326</b>
<b>Gran</b>				0	<b>0</b>
<b>Lauv</b>			333		<b>333</b>
<b>Snitt</b>	<b>571</b>	<b>415</b>	<b>215</b>	<b>0</b>	<b>325</b>

Gjennomsnittspris (kr/kbm)

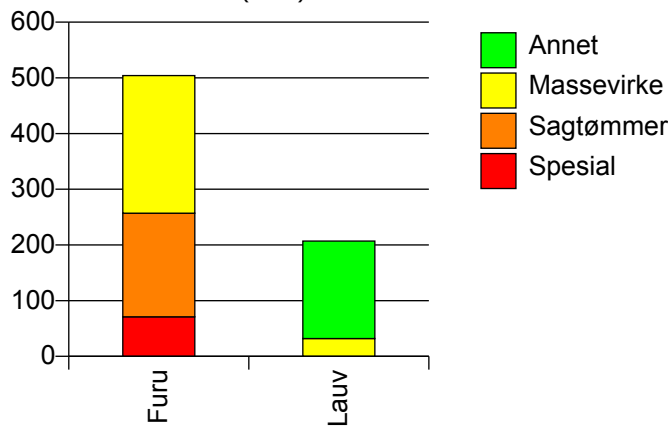


## 441 OS

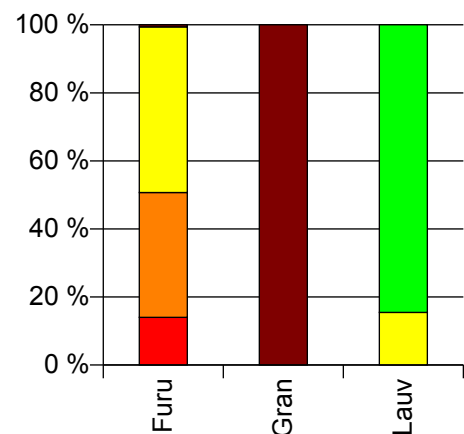
### Volum 2010 (kbm)

	Spesial	Sagtømmer	Massevirke	Annet	Vrak	Sum:
<b>Furu</b>	71	186	247		3	<b>507</b>
<b>Gran</b>					2	<b>2</b>
<b>Lauv</b>			32	175		<b>207</b>
<b>Sum:</b>	<b>71</b>	<b>186</b>	<b>279</b>	<b>175</b>	<b>5</b>	<b>716</b>

Volum (kbm)



Volum (prosentfordelt)



### Gjennomsnittspris 2010 (kr/kbm)

	Spesial	Sagtømmer	Massevirke	Annet	Vrak	Snitt
<b>Furu</b>	533	393	229		0	<b>330</b>
<b>Gran</b>					0	<b>0</b>
<b>Lauv</b>			344	349		<b>348</b>
<b>Snitt</b>	<b>533</b>	<b>393</b>	<b>242</b>	<b>349</b>	<b>0</b>	<b>335</b>

Gjennomsnittspris (kr/kbm)

