

Virkestatistikk fra

# SKOG-DATA AS

**Buskerud m/kommuner**

*Dataene i rapporten er hentet fra databasen som inneholder virkesdata med tilhørende innbetalinger av skogavgift. Rapporten er laget med Business Objects, som er sluttbrukerverktøyet i Skog-Data sine nye datavarehus-løsninger. Business Objects er ett meget sterkt rapportverktøy som kan presentere store mengder data effektivt.*

Rapportene kan lastes ned fra [www.skogdata.no/statistikk](http://www.skogdata.no/statistikk)

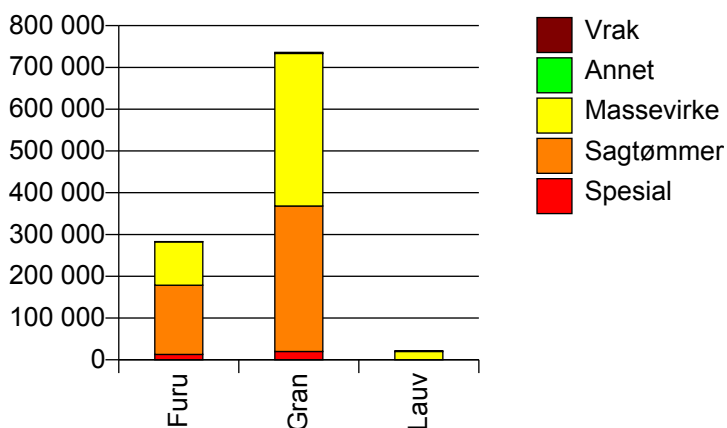
For mer informasjon, kontakt: [tabh@skogdata.no](mailto:tabh@skogdata.no)

## Buskerud

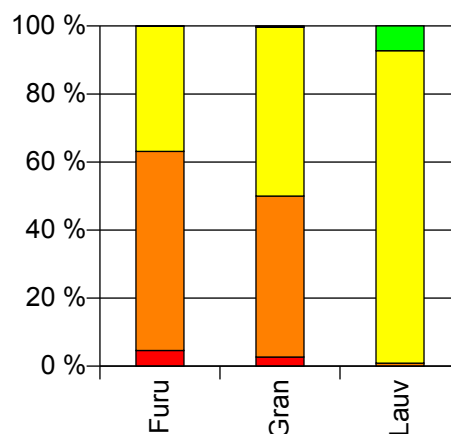
## Volum 2010

	Spesial	Sagtømmer	Massevirke	Annet	Vrak	Sum:
<b>Furu</b>	13 031	165 519	104 038		301	<b>282 889</b>
<b>Gran</b>	19 829	348 293	365 364	495	2 080	<b>736 061</b>
<b>Lauv</b>		186	19 746	1 567		<b>21 499</b>
<b>Sum:</b>	<b>32 860</b>	<b>513 998</b>	<b>489 148</b>	<b>2 062</b>	<b>2 381</b>	<b>1 040 449</b>

Volum (kbm)



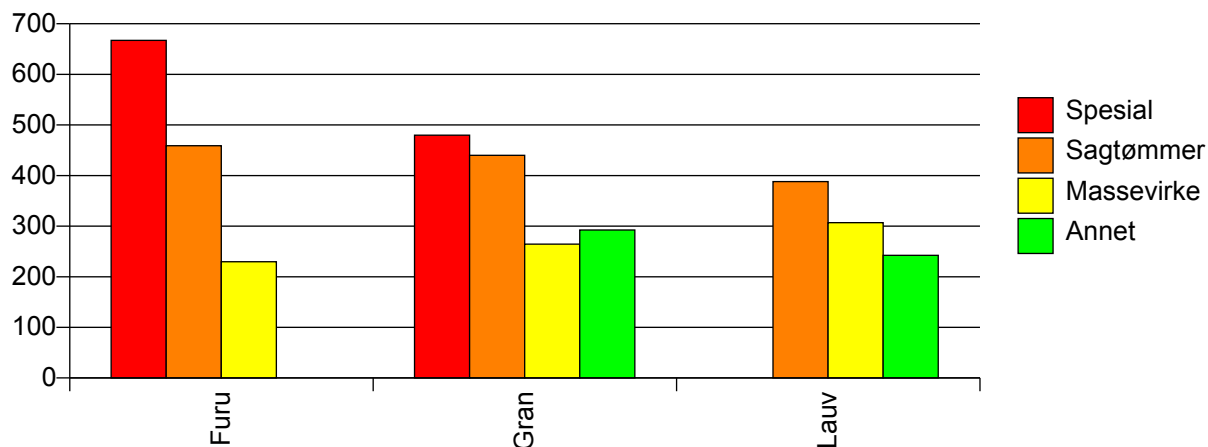
Volum (prosentfordelt)



## Gjennomsnittspris 2010 (kr/kbm)

	Spesial	Sagtømmer	Massevirke	Annet	Vrak	Snitt:
<b>Furu</b>	667	459	230		0	<b>384</b>
<b>Gran</b>	480	440	265	292	0	<b>353</b>
<b>Lauv</b>		388	307	242		<b>303</b>
<b>Snitt:</b>	<b>554</b>	<b>446</b>	<b>259</b>	<b>254</b>	<b>0</b>	<b>360</b>

Gjennomsnittspris (kr/kbm)

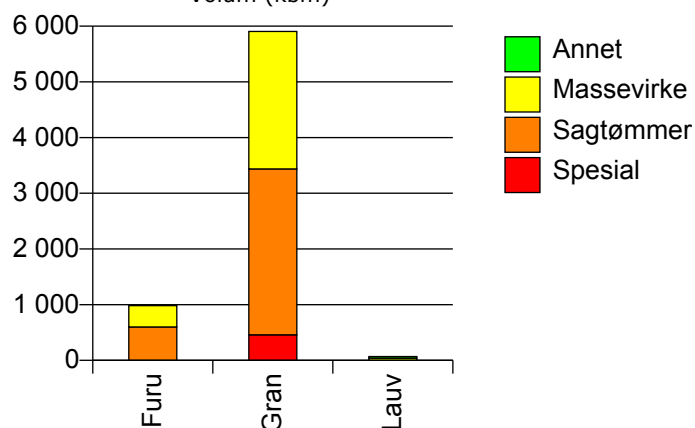


## 602 DRAMMEN

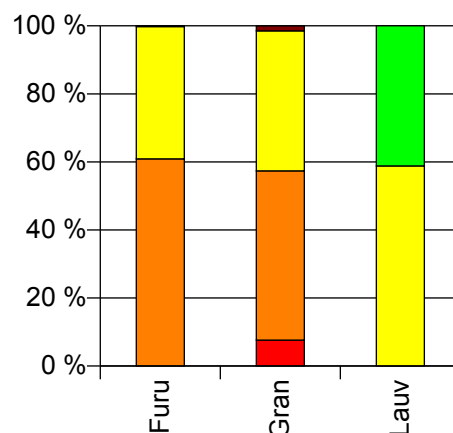
## Volum 2010 (kbm)

	Spesial	Sagtømmer	Massevirke	Annet	Vrak	Sum:
<b>Furu</b>		600	383		2	<b>985</b>
<b>Gran</b>	458	2 979	2 468		88	<b>5 993</b>
<b>Lauv</b>			40	28		<b>68</b>
<b>Sum:</b>	<b>458</b>	<b>3 579</b>	<b>2 891</b>	<b>28</b>	<b>90</b>	<b>7 046</b>

Volum (kbm)



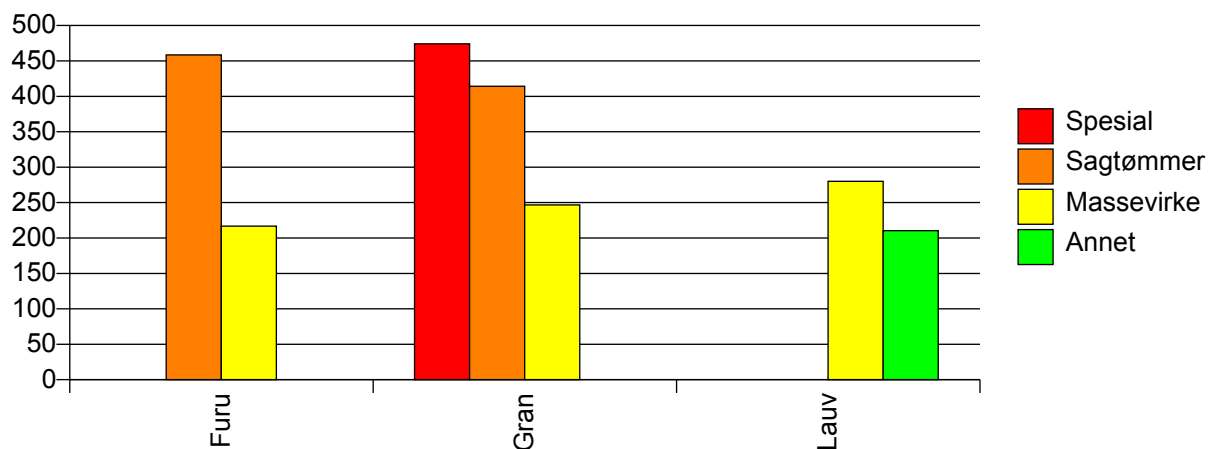
Volum (prosentfordelt)



## Gjennomsnittspris 2010 (kr/kbm)

	Spesial	Sagtømmer	Massevirke	Annet	Vrak	Snitt
<b>Furu</b>		459	217		0	<b>364</b>
<b>Gran</b>	474	414	247		0	<b>344</b>
<b>Lauv</b>			280	210		<b>251</b>
<b>Snitt</b>	<b>474</b>	<b>422</b>	<b>243</b>	<b>210</b>	<b>0</b>	<b>346</b>

Gjennomsnittspris (kr/kbm)

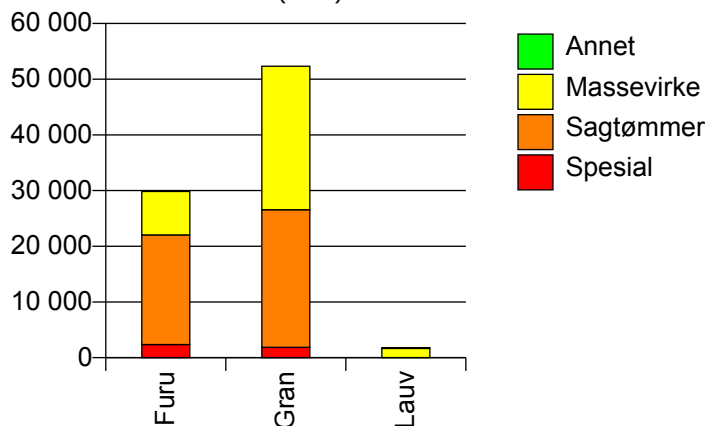


## 604 KONGSBERG

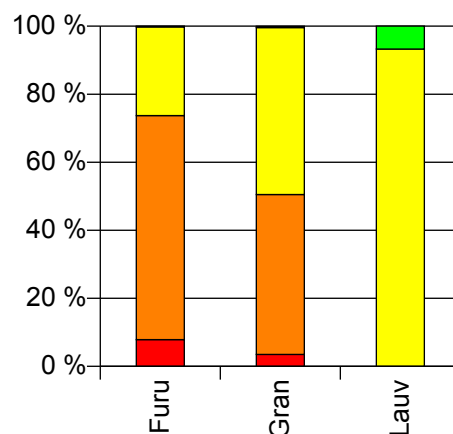
### Volum 2010 (kbm)

	Spesial	Sagtømmer	Massevirke	Annet	Vrak	Sum:
<b>Furu</b>	2 348	19 694	7 802		61	<b>29 905</b>
<b>Gran</b>	1 849	24 706	25 781		225	<b>52 561</b>
<b>Lauv</b>			1 668	120		<b>1 788</b>
<b>Sum:</b>	<b>4 197</b>	<b>44 400</b>	<b>35 251</b>	<b>120</b>	<b>286</b>	<b>84 254</b>

Volum (kbm)



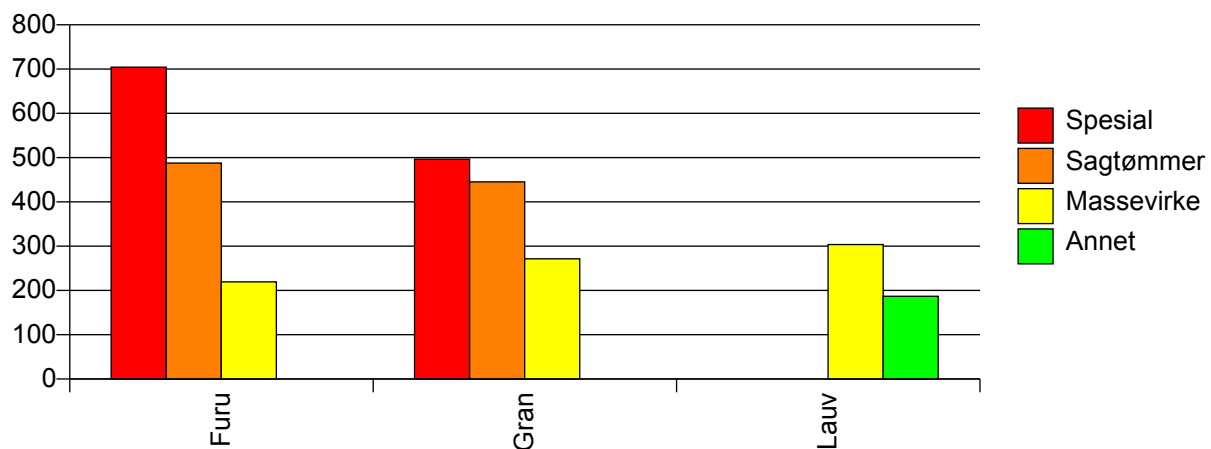
Volum (prosentfordelt)



### Gjennomsnittspris 2010 (kr/kbm)

	Spesial	Sagtømmer	Massevirke	Annet	Vrak	Snitt
<b>Furu</b>	704	488	219		0	<b>434</b>
<b>Gran</b>	497	445	272		0	<b>360</b>
<b>Lauv</b>			304	187		<b>296</b>
<b>Snitt</b>	<b>613</b>	<b>464</b>	<b>262</b>	<b>187</b>	<b>0</b>	<b>385</b>

Gjennomsnittspris (kr/kbm)

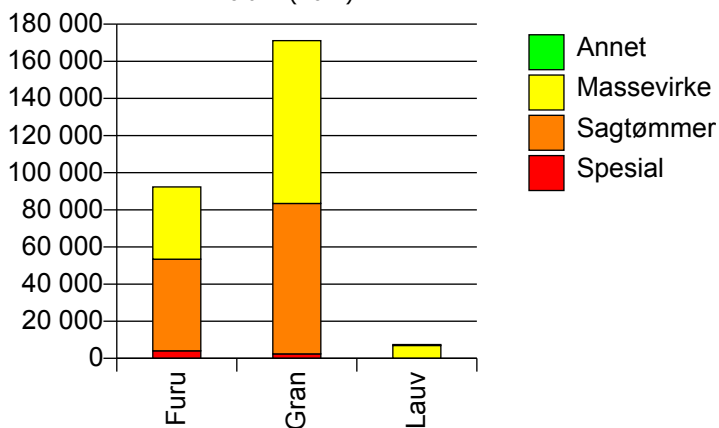


## 605 RINGERIKE

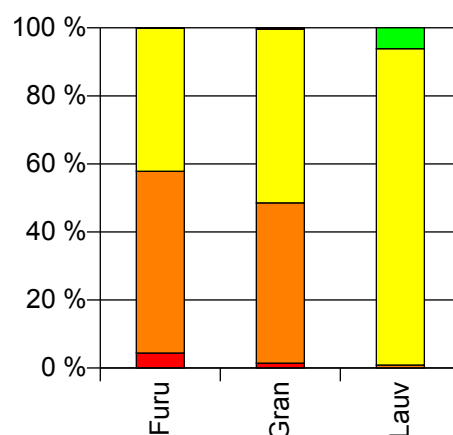
## Volum 2010 (kbm)

	Spesial	Sagtømmer	Massevirke	Annet	Vrak	Sum:
<b>Furu</b>	4 080	49 336	38 900		65	<b>92 381</b>
<b>Gran</b>	2 442	81 008	87 708		701	<b>171 859</b>
<b>Lauv</b>		64	6 892	456		<b>7 412</b>
<b>Sum:</b>	<b>6 522</b>	<b>130 408</b>	<b>133 500</b>	<b>456</b>	<b>766</b>	<b>271 652</b>

Volum (kbm)



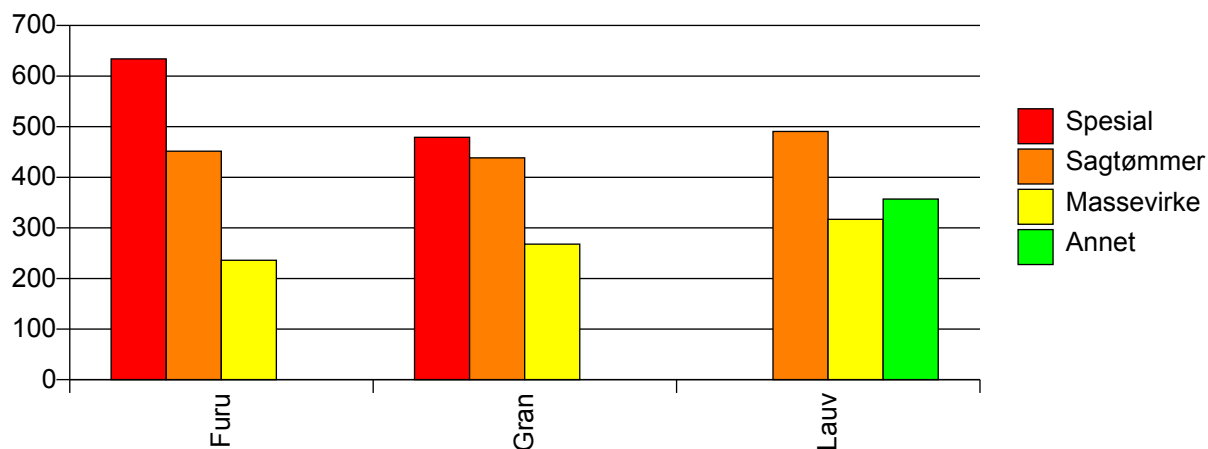
Volum (prosentfordelt)



## Gjennomsnittspris 2010 (kr/kbm)

	Spesial	Sagtømmer	Massevirke	Annet	Vrak	Snitt
<b>Furu</b>	634	452	236		0	<b>369</b>
<b>Gran</b>	479	438	268		0	<b>350</b>
<b>Lauv</b>		490	317	357		<b>321</b>
<b>Snitt</b>	<b>576</b>	<b>443</b>	<b>261</b>	<b>357</b>	<b>0</b>	<b>356</b>

Gjennomsnittspris (kr/kbm)

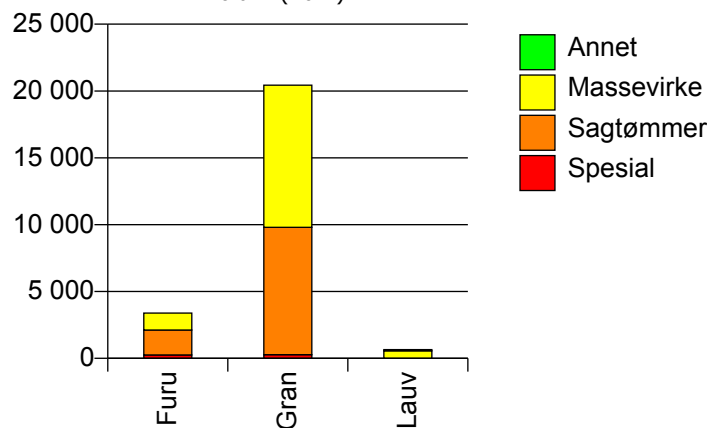


## 612 HOLE

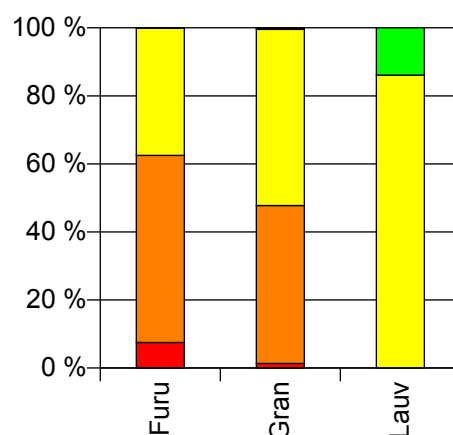
### Volum 2010 (kbm)

	Spesial	Sagtømmer	Massevirke	Annet	Vrak	Sum:
<b>Furu</b>	255	1 866	1 270		3	<b>3 394</b>
<b>Gran</b>	279	9 525	10 635		93	<b>20 532</b>
<b>Lauv</b>			563	91		<b>654</b>
<b>Sum:</b>	<b>534</b>	<b>11 391</b>	<b>12 468</b>	<b>91</b>	<b>96</b>	<b>24 580</b>

Volum (kbm)



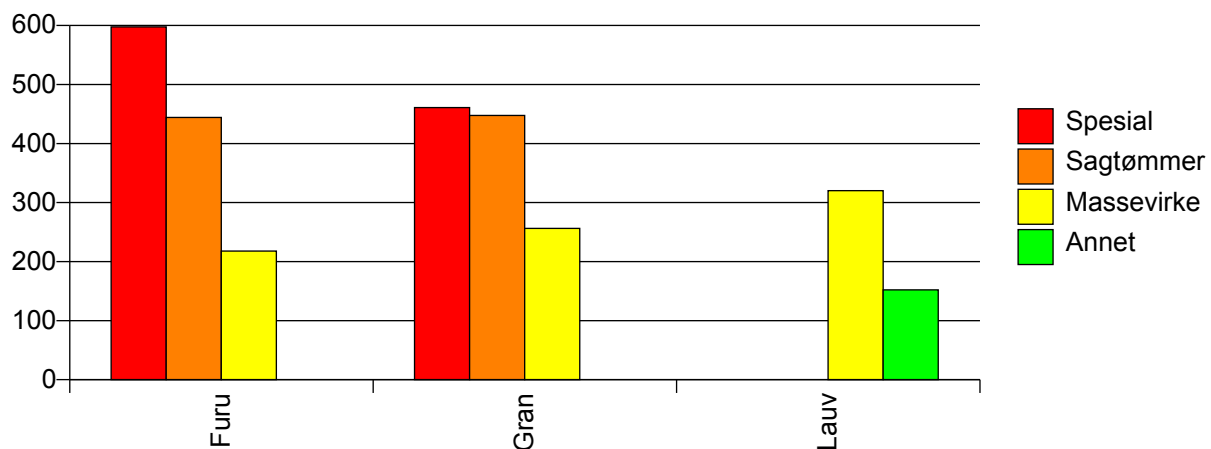
Volum (prosentfordelt)



### Gjennomsnittspris 2010 (kr/kbm)

	Spesial	Sagtømmer	Massevirke	Annet	Vrak	Snitt
<b>Furu</b>	598	444	218		0	<b>371</b>
<b>Gran</b>	461	448	256		0	<b>347</b>
<b>Lauv</b>			320	152		<b>297</b>
<b>Snitt</b>	<b>526</b>	<b>447</b>	<b>255</b>	<b>152</b>	<b>0</b>	<b>349</b>

Gjennomsnittspris (kr/kbm)

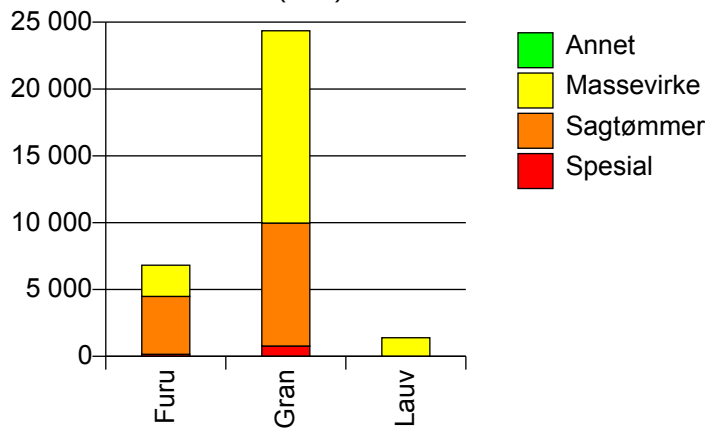


## 615 FLÅ

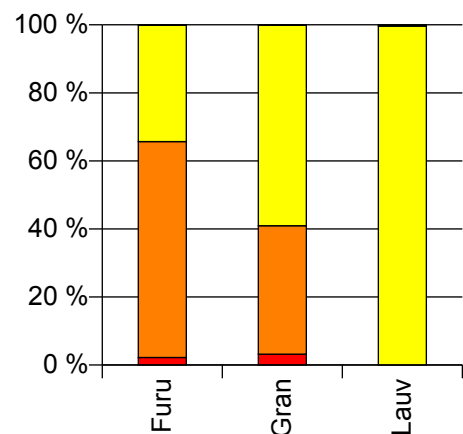
### Volum 2010 (kbm)

	Spesial	Sagtømmer	Massevirke	Annet	Vrak	Sum:
<b>Furu</b>	152	4 332	2 337		8	<b>6 829</b>
<b>Gran</b>	774	9 202	14 384		6	<b>24 366</b>
<b>Lauv</b>			1 389	5		<b>1 394</b>
<b>Sum:</b>	<b>926</b>	<b>13 534</b>	<b>18 110</b>	<b>5</b>	<b>14</b>	<b>32 589</b>

Volum (kbm)



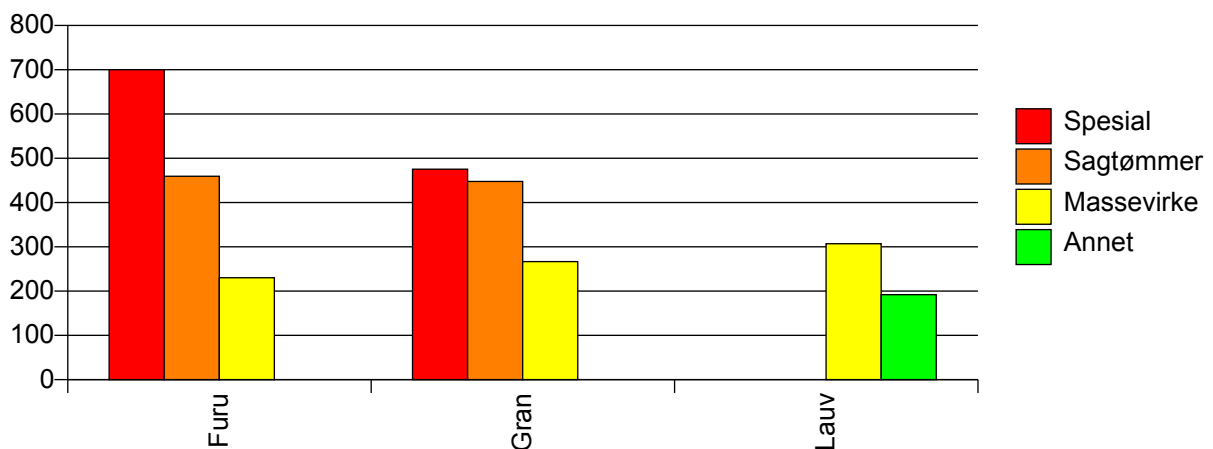
Volum (prosentfordelt)



### Gjennomsnittspris 2010 (kr/kbm)

	Spesial	Sagtømmer	Massevirke	Annet	Vrak	Snitt
<b>Furu</b>	700	460	230		0	<b>386</b>
<b>Gran</b>	475	448	267		0	<b>342</b>
<b>Lauv</b>			307	192		<b>307</b>
<b>Snitt</b>	<b>512</b>	<b>452</b>	<b>265</b>	<b>192</b>	<b>0</b>	<b>350</b>

Gjennomsnittspris (kr/kbm)

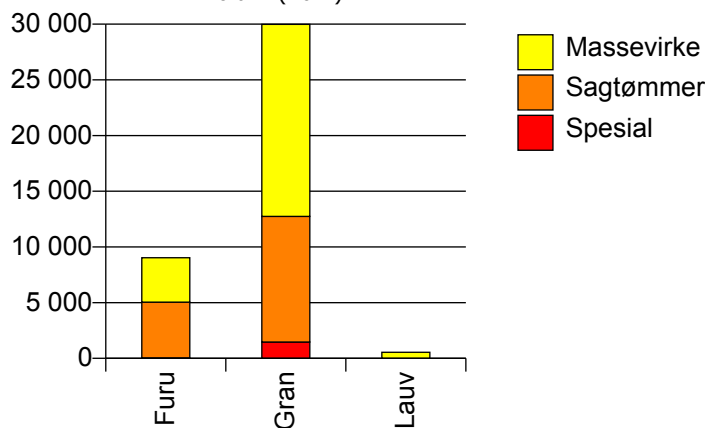


## 616 NES

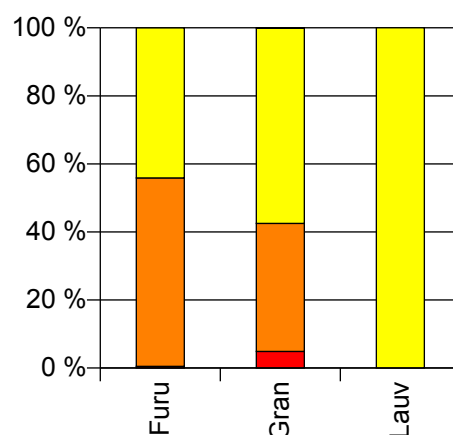
### Volum 2010 (kbm)

	Spesial	Sagtømmer	Massevirke	Vrak	Sum:
<b>Furu</b>	43	5 002	3 982	3	<b>9 030</b>
<b>Gran</b>	1 461	11 287	17 229	19	<b>29 996</b>
<b>Lauv</b>			546		<b>546</b>
<b>Sum:</b>	<b>1 504</b>	<b>16 289</b>	<b>21 757</b>	<b>22</b>	<b>39 572</b>

Volum (kbm)



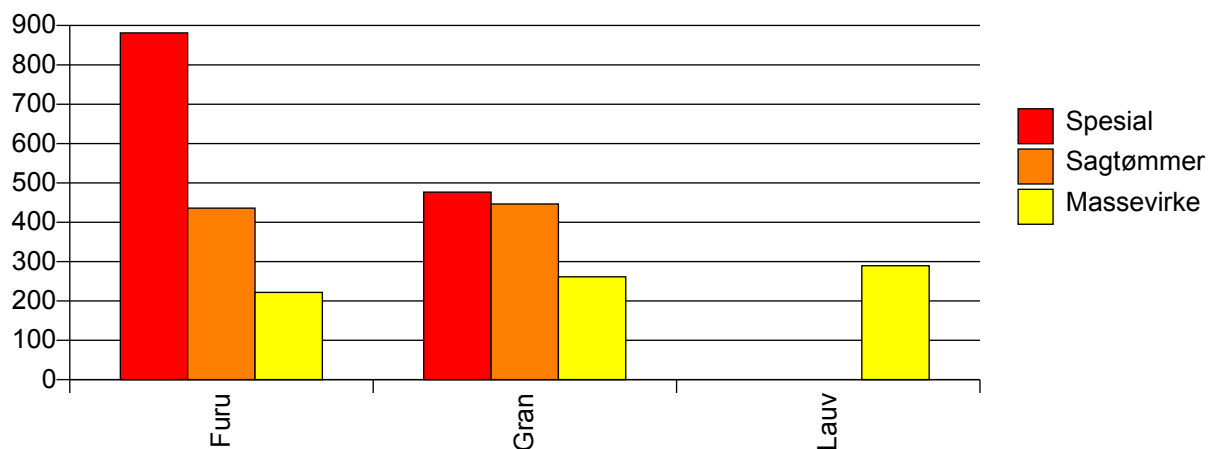
Volum (prosentfordelt)



### Gjennomsnittspris 2010 (kr/kbm)

	Spesial	Sagtømmer	Massevirke	Vrak	Snitt
<b>Furu</b>	881	436	222	0	<b>344</b>
<b>Gran</b>	477	446	261	0	<b>341</b>
<b>Lauv</b>			289		<b>289</b>
<b>Snitt</b>	<b>488</b>	<b>443</b>	<b>255</b>	<b>0</b>	<b>341</b>

Gjennomsnittspris (kr/kbm)



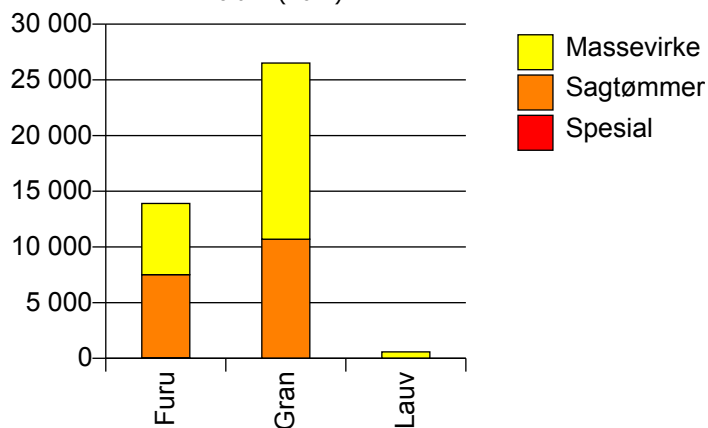


## 617 GOL

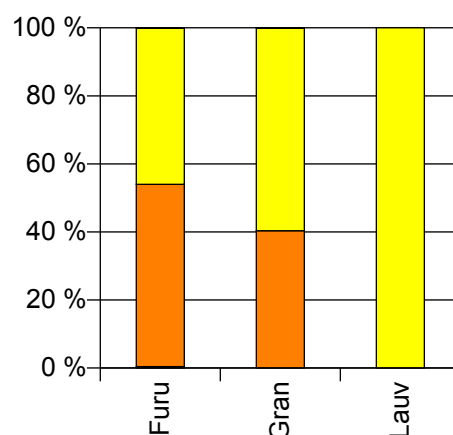
## Volum 2010 (kbm)

	Spesial	Sagtømmer	Massevirke	Vrak	Sum:
<b>Furu</b>	55	7 456	6 391	9	<b>13 911</b>
<b>Gran</b>		10 694	15 812	5	<b>26 511</b>
<b>Lauv</b>			584		<b>584</b>
<b>Sum:</b>	<b>55</b>	<b>18 150</b>	<b>22 787</b>	<b>14</b>	<b>41 006</b>

Volum (kbm)



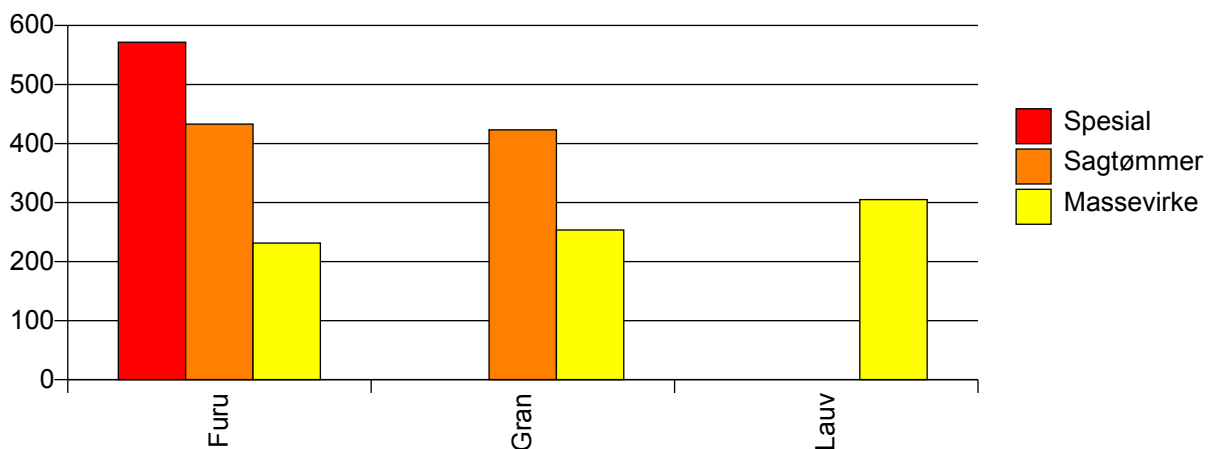
Volum (prosentfordelt)



## Gjennomsnittspris 2010 (kr/kbm)

	Spesial	Sagtømmer	Massevirke	Vrak	Snitt
<b>Furu</b>	572	433	231	0	<b>341</b>
<b>Gran</b>		423	254	0	<b>322</b>
<b>Lauv</b>			305		<b>305</b>
<b>Snitt</b>	<b>572</b>	<b>427</b>	<b>249</b>	<b>0</b>	<b>328</b>

Gjennomsnittspris (kr/kbm)

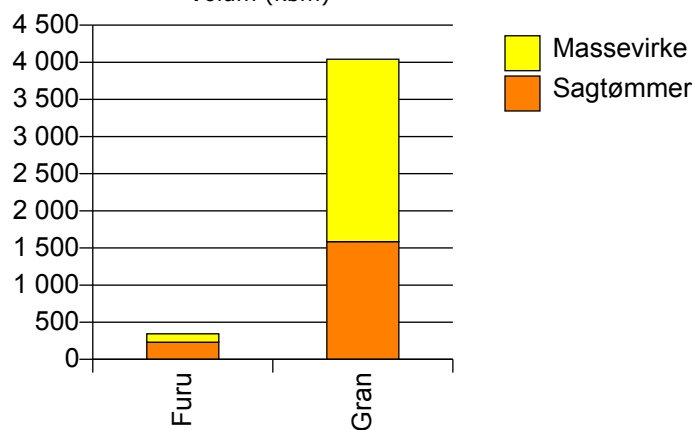


## 618 HEMSEDAL

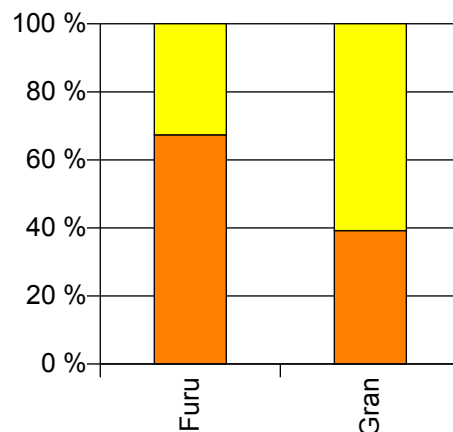
## Volum 2010 (kbm)

	Sagtømmer	Massevirke	Vrak	Sum:
<b>Furu</b>	231	112	0	<b>343</b>
<b>Gran</b>	1 585	2 457	0	<b>4 042</b>
<b>Sum:</b>	<b>1 816</b>	<b>2 569</b>	<b>0</b>	<b>4 385</b>

Volum (kbm)



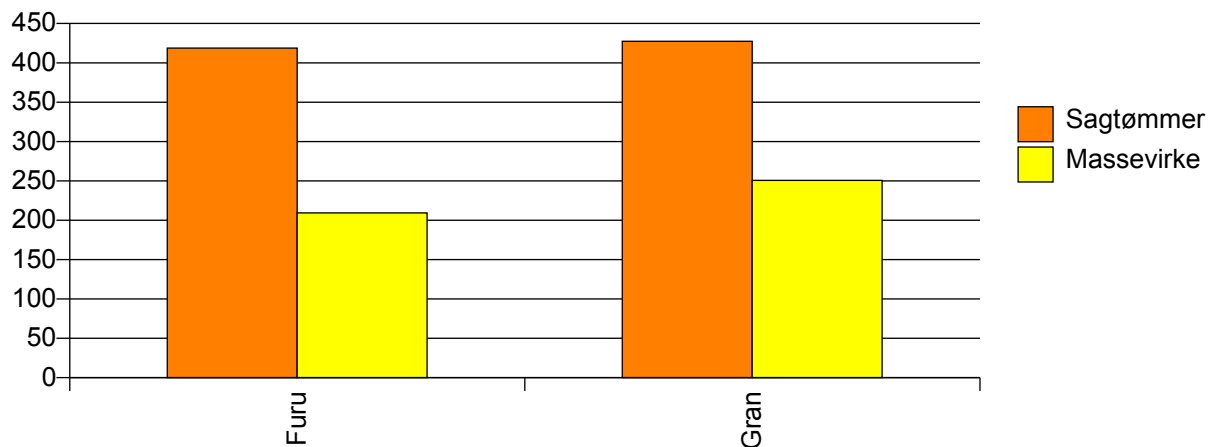
Volum (prosentfordelt)



## Gjennomsnittspris 2010 (kr/kbm)

	Sagtømmer	Massevirke	Vrak	Snitt
<b>Furu</b>	419	209	#DIV/0	<b>350</b>
<b>Gran</b>	427	251	#DIV/0	<b>320</b>
<b>Snitt</b>	<b>426</b>	<b>249</b>	<b>#DIV/0</b>	<b>322</b>

Gjennomsnittspris (kr/kbm)

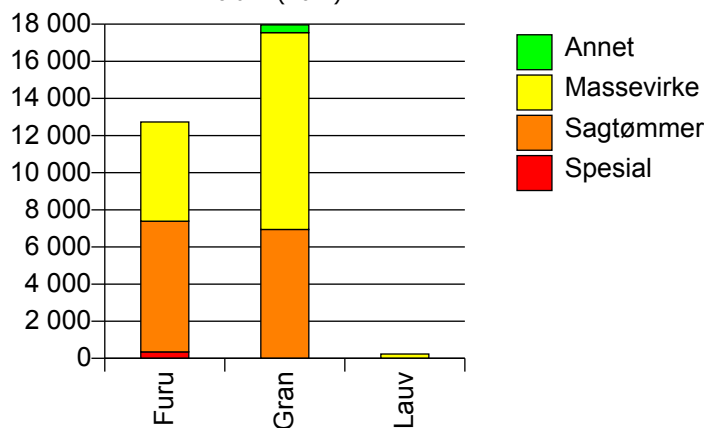


## 619 ÅL

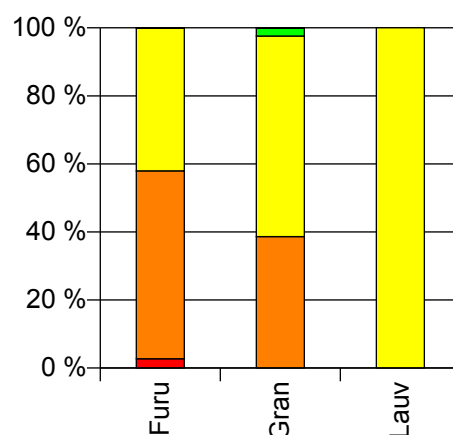
### Volum 2010 (kbm)

	Spesial	Sagtømmer	Massevirke	Annet	Vrak	Sum:
<b>Furu</b>	347	7 039	5 349		11	<b>12 746</b>
<b>Gran</b>		6 942	10 599	421	15	<b>17 977</b>
<b>Lauv</b>			232			<b>232</b>
<b>Sum:</b>	<b>347</b>	<b>13 981</b>	<b>16 180</b>	<b>421</b>	<b>26</b>	<b>30 955</b>

Volum (kbm)



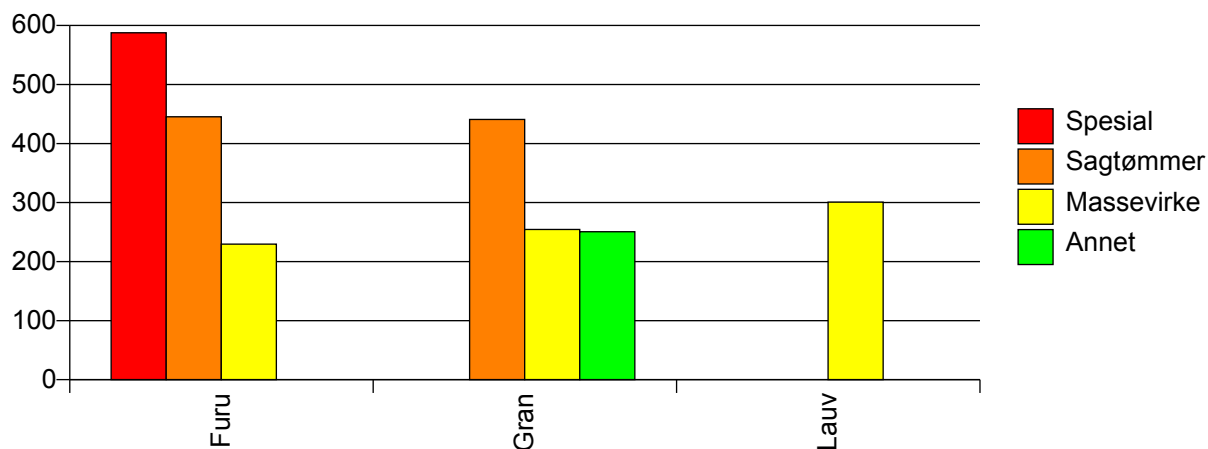
Volum (prosentfordelt)



### Gjennomsnittspris 2010 (kr/kbm)

	Spesial	Sagtømmer	Massevirke	Annet	Vrak	Snitt
<b>Furu</b>	588	445	230		0	<b>358</b>
<b>Gran</b>		441	255	251	0	<b>326</b>
<b>Lauv</b>			301			<b>301</b>
<b>Snitt</b>	<b>588</b>	<b>443</b>	<b>247</b>	<b>251</b>	<b>0</b>	<b>339</b>

Gjennomsnittspris (kr/kbm)

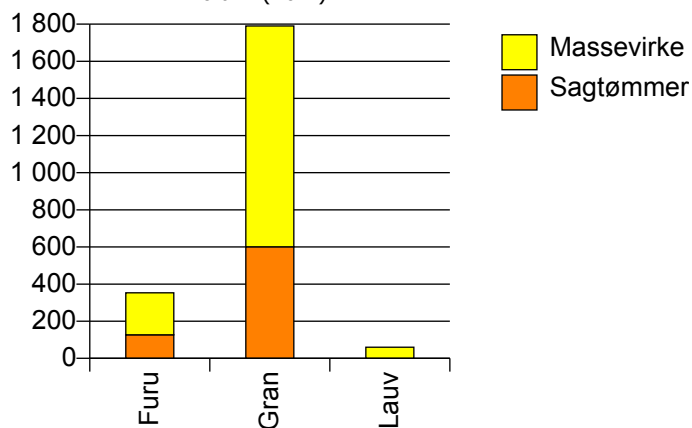


## 620 HOL

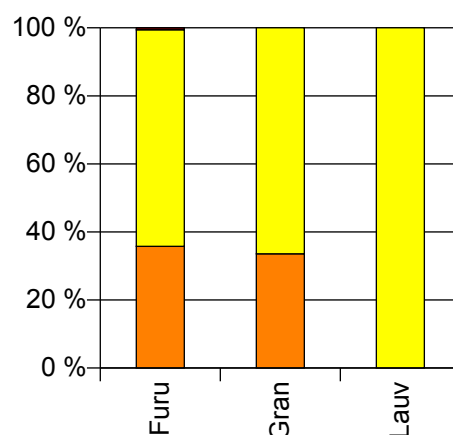
## Volum 2010 (kbm)

	Sagtømmer	Massevirke	Vrak	Sum:
<b>Furu</b>	127	226	2	<b>355</b>
<b>Gran</b>	601	1 189	0	<b>1 790</b>
<b>Lauv</b>		60		<b>60</b>
<b>Sum:</b>	<b>728</b>	<b>1 475</b>	<b>2</b>	<b>2 205</b>

Volum (kbm)



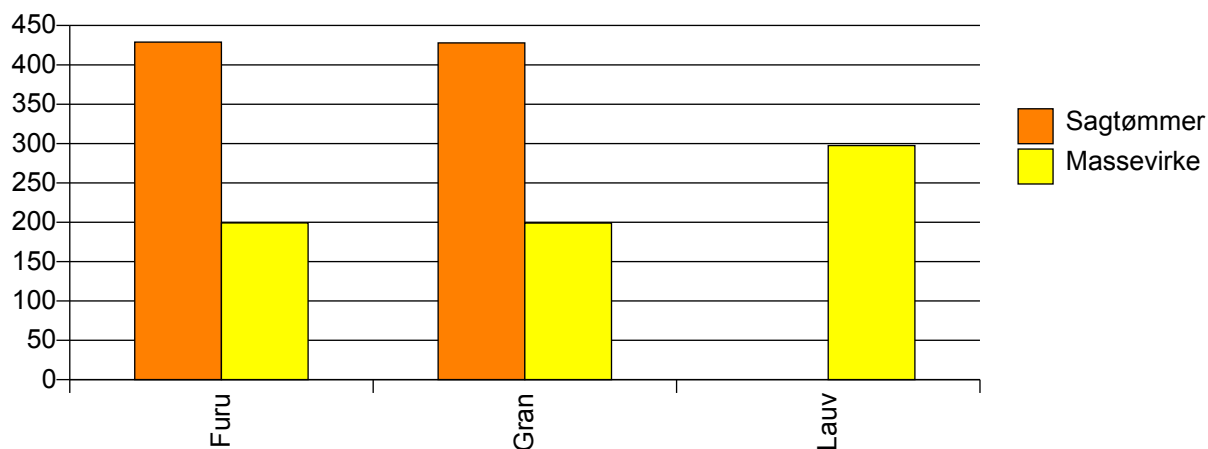
Volum (prosentfordelt)



## Gjennomsnittspris 2010 (kr/kbm)

	Sagtømmer	Massevirke	Vrak	Snitt
<b>Furu</b>	429	199	0	<b>280</b>
<b>Gran</b>	428	199	#DIV/0	<b>276</b>
<b>Lauv</b>		298		<b>298</b>
<b>Snitt</b>	<b>428</b>	<b>203</b>	<b>0</b>	<b>277</b>

Gjennomsnittspris (kr/kbm)

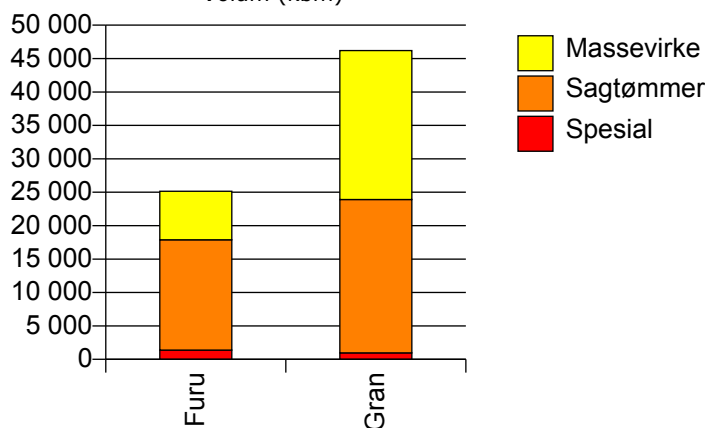


## 621 SIGDAL

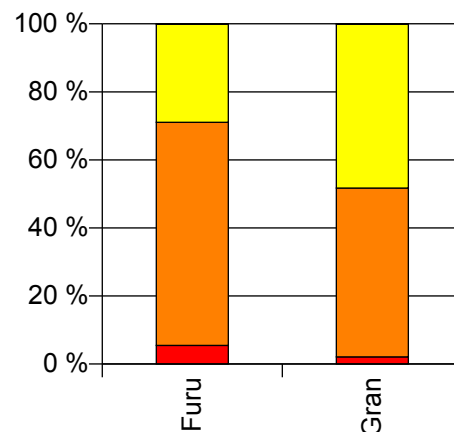
## Volum 2010 (kbm)

	Spesial	Sagtømmer	Massevirke	Vrak	Sum:
<b>Furu</b>	1 378	16 513	7 263	25	<b>25 179</b>
<b>Gran</b>	973	22 930	22 295	22	<b>46 220</b>
<b>Sum:</b>	<b>2 351</b>	<b>39 443</b>	<b>29 558</b>	<b>47</b>	<b>71 399</b>

Volum (kbm)



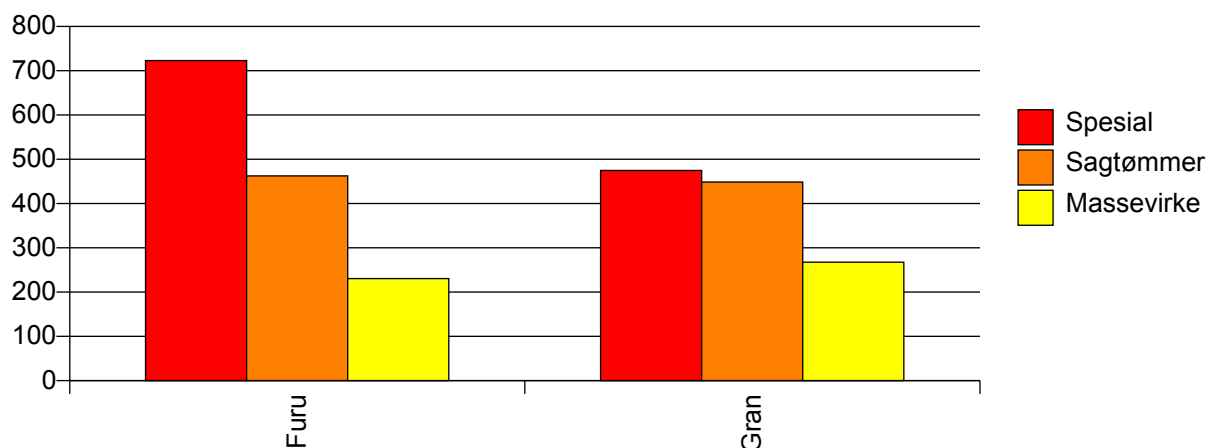
Volum (prosentfordelt)



## Gjennomsnittspris 2010 (kr/kbm)

	Spesial	Sagtømmer	Massevirke	Vrak	Snitt
<b>Furu</b>	723	462	231	0	<b>409</b>
<b>Gran</b>	475	449	268	0	<b>362</b>
<b>Snitt</b>	<b>620</b>	<b>454</b>	<b>259</b>	<b>0</b>	<b>379</b>

Gjennomsnittspris (kr/kbm)

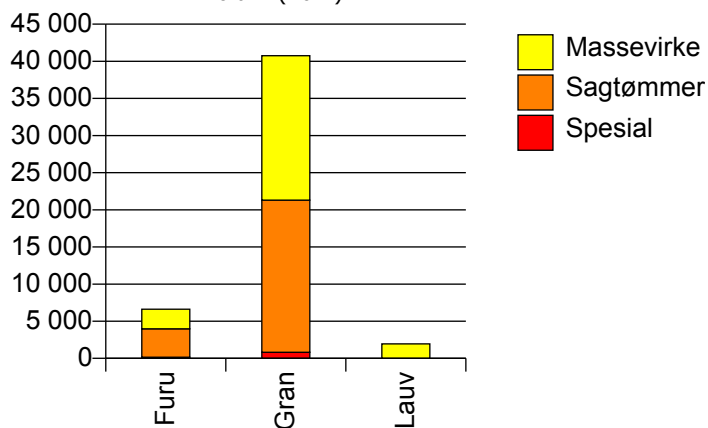


## 622 KRØDSHERAD

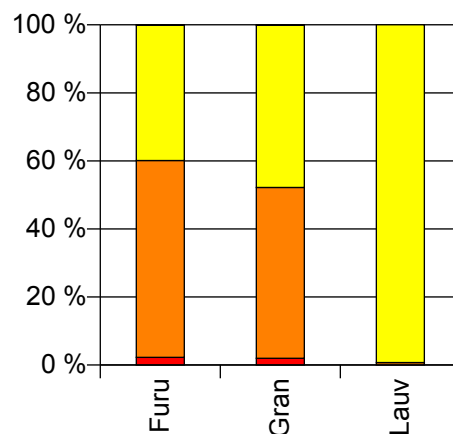
## Volum 2010 (kbm)

	Spesial	Sagtømmer	Massevirke	Vrak	Sum:
<b>Furu</b>	148	3 834	2 637	4	<b>6 623</b>
<b>Gran</b>	816	20 483	19 462	58	<b>40 819</b>
<b>Lauv</b>		14	1 943		<b>1 957</b>
<b>Sum:</b>	<b>964</b>	<b>24 331</b>	<b>24 042</b>	<b>62</b>	<b>49 399</b>

Volum (kbm)



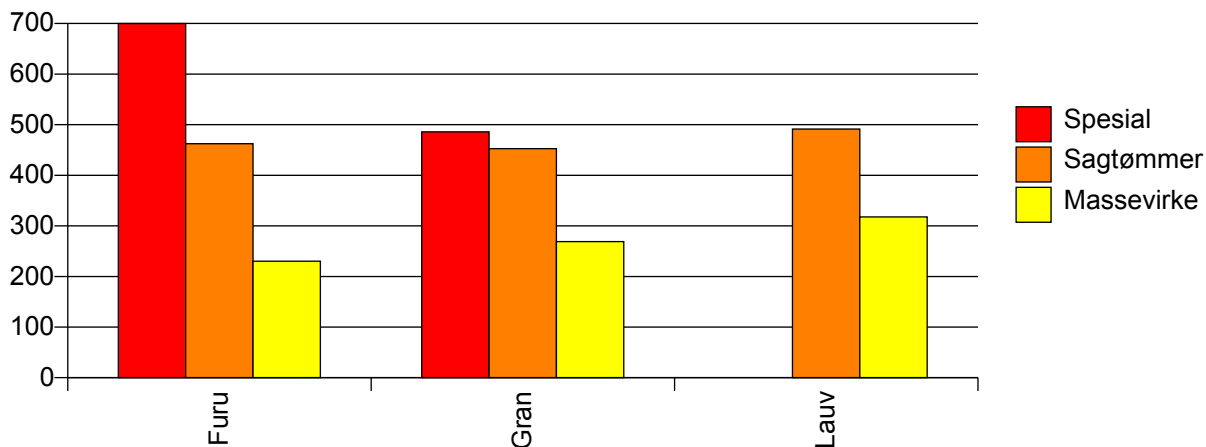
Volum (prosentfordelt)



## Gjennomsnittspris 2010 (kr/kbm)

	Spesial	Sagtømmer	Massevirke	Vrak	Snitt
<b>Furu</b>	700	462	230	0	<b>375</b>
<b>Gran</b>	486	453	269	0	<b>365</b>
<b>Lauv</b>		491	318		<b>319</b>
<b>Snitt</b>	<b>519</b>	<b>454</b>	<b>269</b>	<b>0</b>	<b>365</b>

Gjennomsnittspris (kr/kbm)

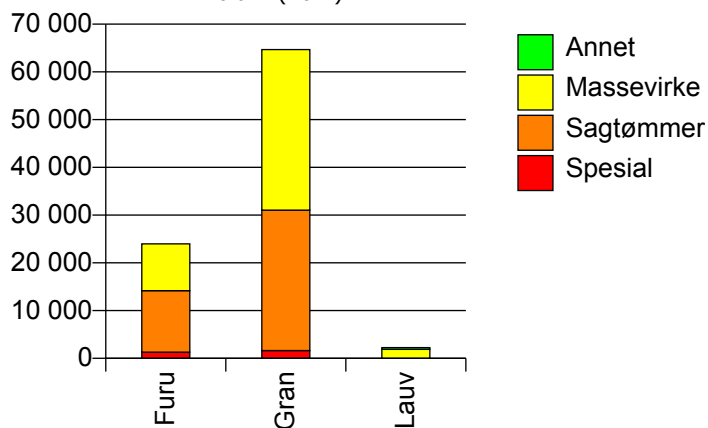


## 623 MODUM

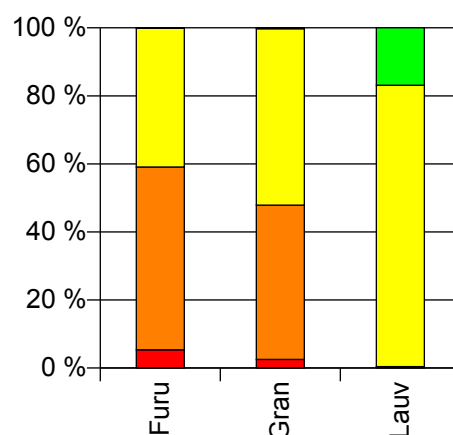
## Volum 2010 (kbm)

	Spesial	Sagtømmer	Massevirke	Annet	Vrak	Sum:
<b>Furu</b>	1 288	12 897	9 787		32	<b>24 004</b>
<b>Gran</b>	1 639	29 400	33 628		164	<b>64 831</b>
<b>Lauv</b>		9	1 866	381		<b>2 256</b>
<b>Sum:</b>	<b>2 927</b>	<b>42 306</b>	<b>45 281</b>	<b>381</b>	<b>196</b>	<b>91 091</b>

Volum (kbm)



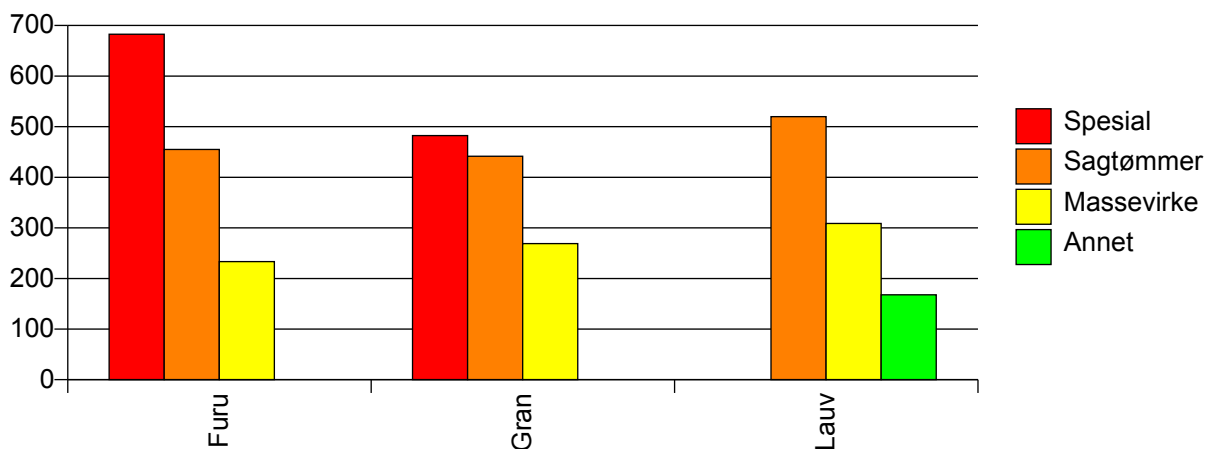
Volum (prosentfordelt)



## Gjennomsnittspris 2010 (kr/kbm)

	Spesial	Sagtømmer	Massevirke	Annet	Vrak	Snitt
<b>Furu</b>	683	455	233		0	<b>376</b>
<b>Gran</b>	483	441	269		0	<b>352</b>
<b>Lauv</b>		520	309	168		<b>286</b>
<b>Snitt</b>	<b>571</b>	<b>446</b>	<b>263</b>	<b>168</b>	<b>0</b>	<b>357</b>

Gjennomsnittspris (kr/kbm)

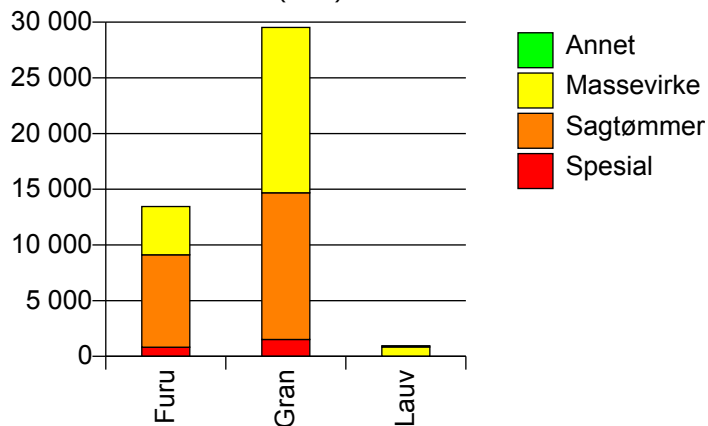


## 624 ØVRE EIKER

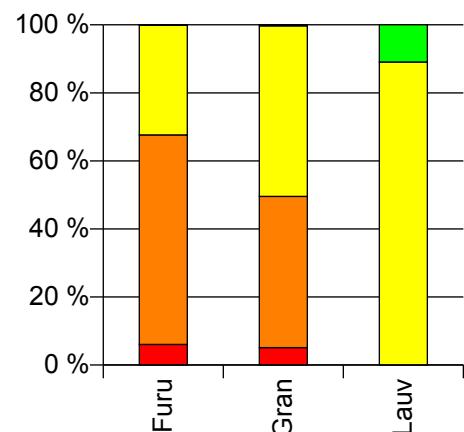
### Volum 2010 (kbm)

	Spesial	Sagtømmer	Massevirke	Annet	Vrak	Sum:
<b>Furu</b>	816	8 298	4 340		18	<b>13 472</b>
<b>Gran</b>	1 517	13 165	14 851		89	<b>29 622</b>
<b>Lauv</b>			847	104		<b>951</b>
<b>Sum:</b>	<b>2 333</b>	<b>21 463</b>	<b>20 038</b>	<b>104</b>	<b>107</b>	<b>44 045</b>

Volum (kbm)



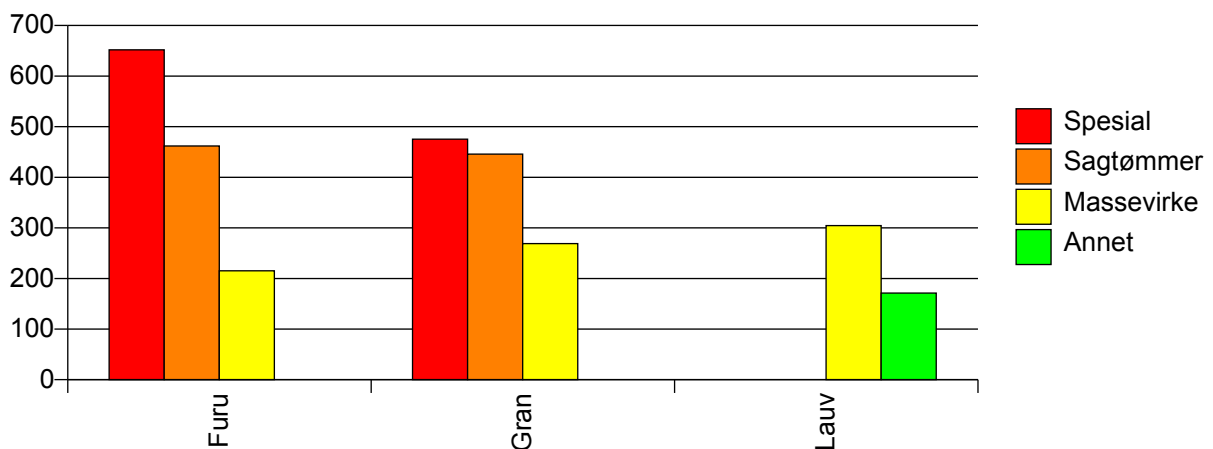
Volum (prosentfordelt)



### Gjennomsnittspris 2010 (kr/kbm)

	Spesial	Sagtømmer	Massevirke	Annet	Vrak	Snitt
<b>Furu</b>	652	462	215		0	<b>393</b>
<b>Gran</b>	475	446	269		0	<b>357</b>
<b>Lauv</b>			305	171		<b>290</b>
<b>Snitt</b>	<b>537</b>	<b>452</b>	<b>259</b>	<b>171</b>	<b>0</b>	<b>367</b>

Gjennomsnittspris (kr/kbm)



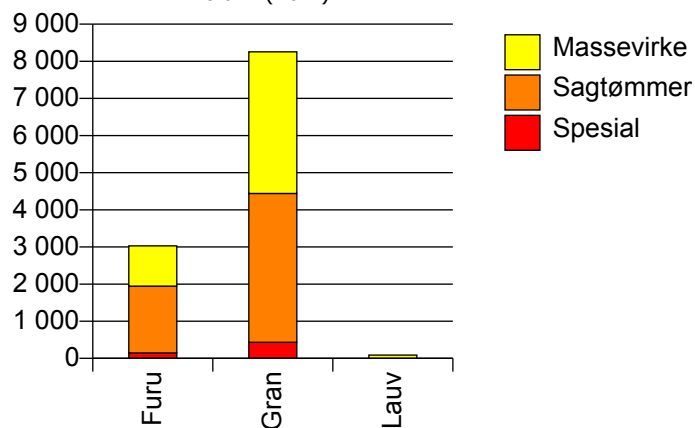


## 625 NEDRE EIKER

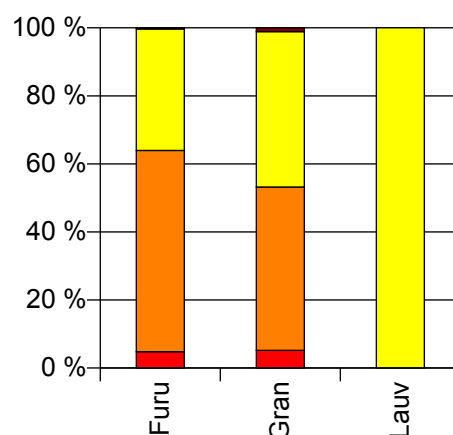
## Volum 2010 (kbm)

	Spesial	Sagtømmer	Massevirke	Vrak	Sum:
<b>Furu</b>	146	1 798	1 086	10	<b>3 040</b>
<b>Gran</b>	433	4 009	3 812	94	<b>8 348</b>
<b>Lauv</b>			87		<b>87</b>
<b>Sum:</b>	<b>579</b>	<b>5 807</b>	<b>4 985</b>	<b>104</b>	<b>11 475</b>

Volum (kbm)



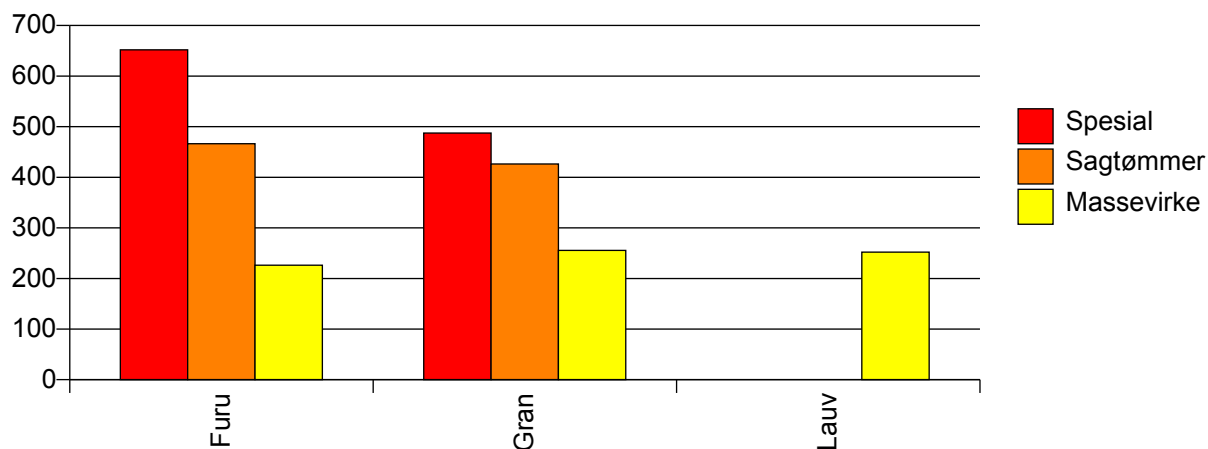
Volum (prosentfordelt)



## Gjennomsnittspris 2010 (kr/kbm)

	Spesial	Sagtømmer	Massevirke	Vrak	Snitt
<b>Furu</b>	652	466	226	0	<b>388</b>
<b>Gran</b>	487	426	255	0	<b>347</b>
<b>Lauv</b>			252		<b>252</b>
<b>Snitt</b>	<b>529</b>	<b>439</b>	<b>249</b>	<b>0</b>	<b>357</b>

Gjennomsnittspris (kr/kbm)

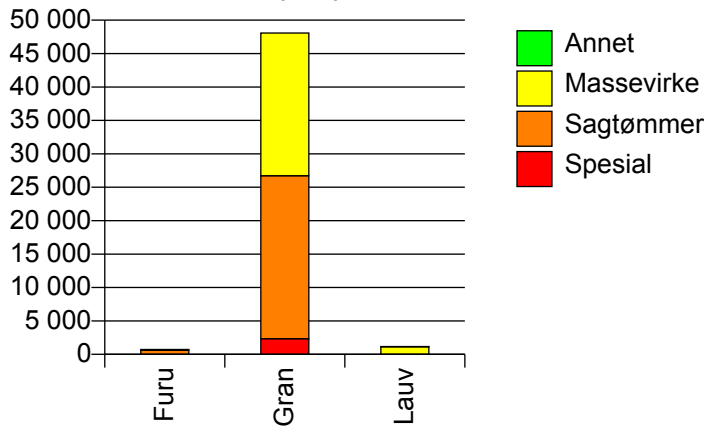


## 626 LIER

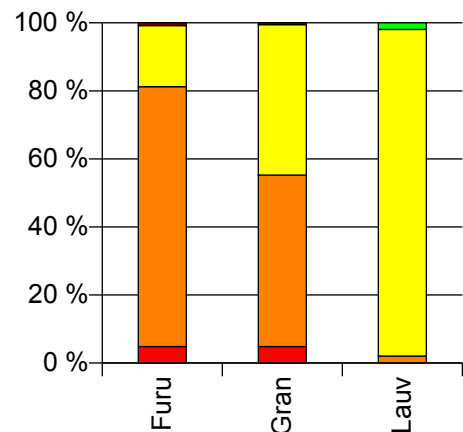
### Volum 2010 (kbm)

	Spesial	Sagtømmer	Massevirke	Annet	Vrak	Sum:
<b>Furu</b>	36	566	133		6	<b>741</b>
<b>Gran</b>	2 344	24 373	21 366		261	<b>48 344</b>
<b>Lauv</b>		24	1 130	23		<b>1 177</b>
<b>Sum:</b>	<b>2 380</b>	<b>24 963</b>	<b>22 629</b>	<b>23</b>	<b>267</b>	<b>50 262</b>

Volum (kbm)



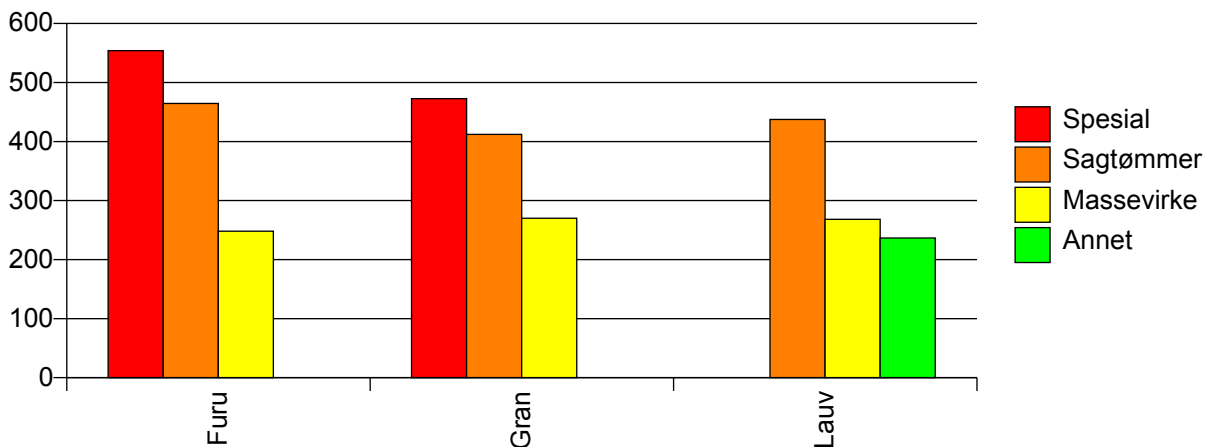
Volum (prosentfordelt)



### Gjennomsnittspris 2010 (kr/kbm)

	Spesial	Sagtømmer	Massevirke	Annet	Vrak	Snitt
<b>Furu</b>	554	464	248		0	<b>426</b>
<b>Gran</b>	473	412	270		0	<b>350</b>
<b>Lauv</b>		437	268	237		<b>271</b>
<b>Snitt</b>	<b>474</b>	<b>413</b>	<b>270</b>	<b>237</b>	<b>0</b>	<b>349</b>

Gjennomsnittspris (kr/kbm)

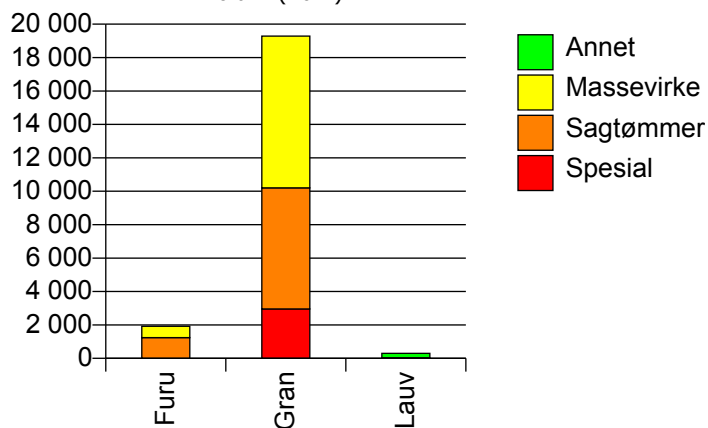


## 627 RØYKEN

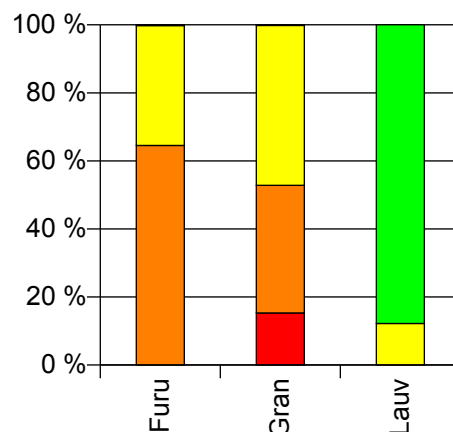
### Volum 2010 (kbm)

	Spesial	Sagtømmer	Massevirke	Annet	Vrak	Sum:
<b>Furu</b>	0	1 242	678		4	<b>1 924</b>
<b>Gran</b>	2 957	7 249	9 076		35	<b>19 317</b>
<b>Lauv</b>			37	266		<b>303</b>
<b>Sum:</b>	<b>2 957</b>	<b>8 491</b>	<b>9 791</b>	<b>266</b>	<b>39</b>	<b>21 544</b>

Volum (kbm)



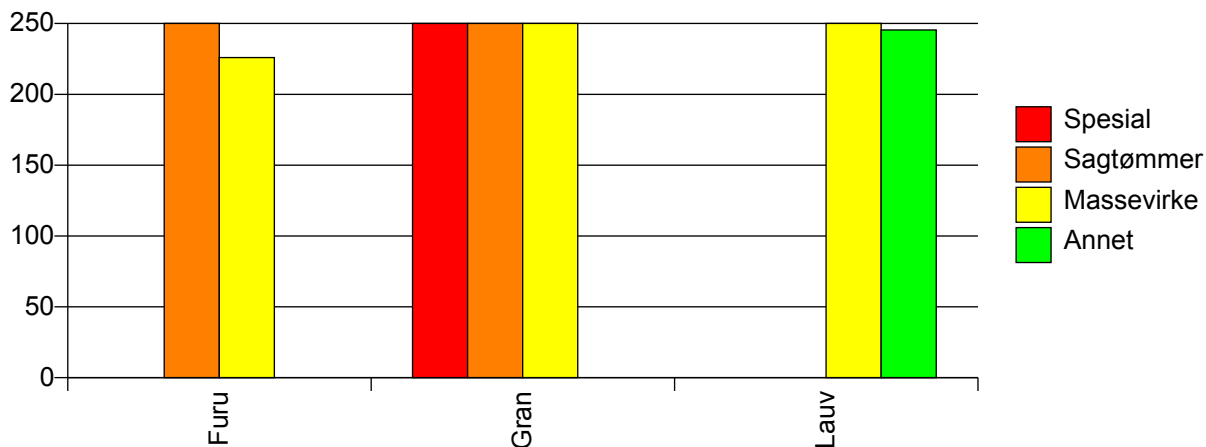
Volum (prosentfordelt)



### Gjennomsnittspris 2010 (kr/kbm)

	Spesial	Sagtømmer	Massevirke	Annet	Vrak	Snitt
<b>Furu</b>	#DIV/0	493	226		0	<b>398</b>
<b>Gran</b>	482	446	260		0	<b>363</b>
<b>Lauv</b>			325	245		<b>255</b>
<b>Snitt</b>	<b>482</b>	<b>452</b>	<b>258</b>	<b>245</b>	<b>0</b>	<b>365</b>

Gjennomsnittspris (kr/kbm)

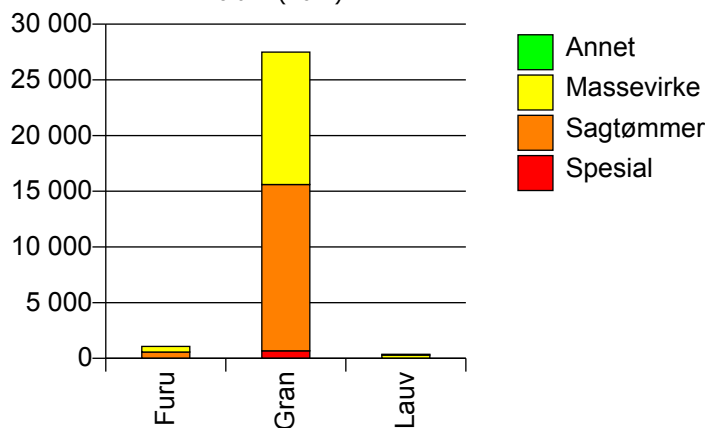


## 628 HURUM

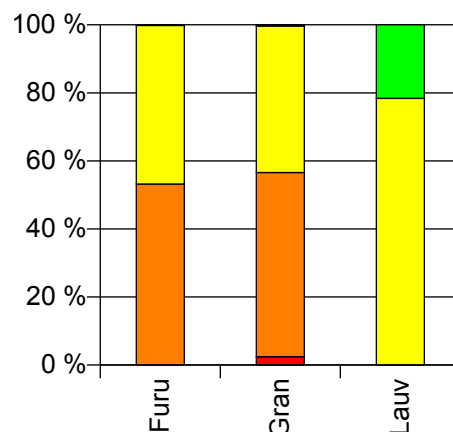
## Volum 2010 (kbm)

	Spesial	Sagtømmer	Massevirke	Annet	Vrak	Sum:
<b>Furu</b>		574	503		2	<b>1 079</b>
<b>Gran</b>	674	14 933	11 887		93	<b>27 587</b>
<b>Lauv</b>			290	80		<b>370</b>
<b>Sum:</b>	<b>674</b>	<b>15 507</b>	<b>12 680</b>	<b>80</b>	<b>95</b>	<b>29 036</b>

Volum (kbm)



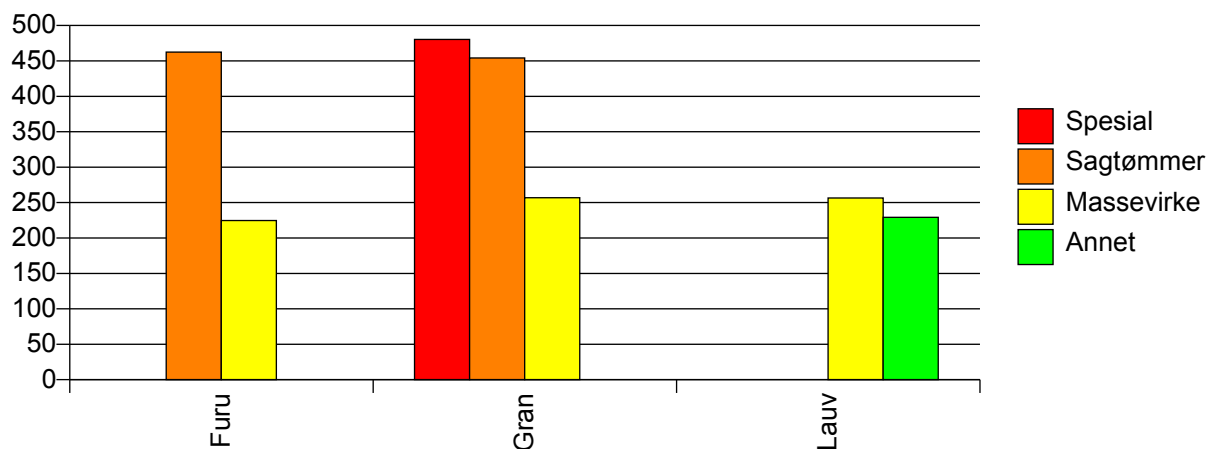
Volum (prosentfordelt)



## Gjennomsnittspris 2010 (kr/kbm)

	Spesial	Sagtømmer	Massevirke	Annet	Vrak	Snitt
<b>Furu</b>		462	225		0	<b>351</b>
<b>Gran</b>	480	454	257		0	<b>368</b>
<b>Lauv</b>			256	229		<b>251</b>
<b>Snitt</b>	<b>480</b>	<b>454</b>	<b>256</b>	<b>229</b>	<b>0</b>	<b>366</b>

Gjennomsnittspris (kr/kbm)

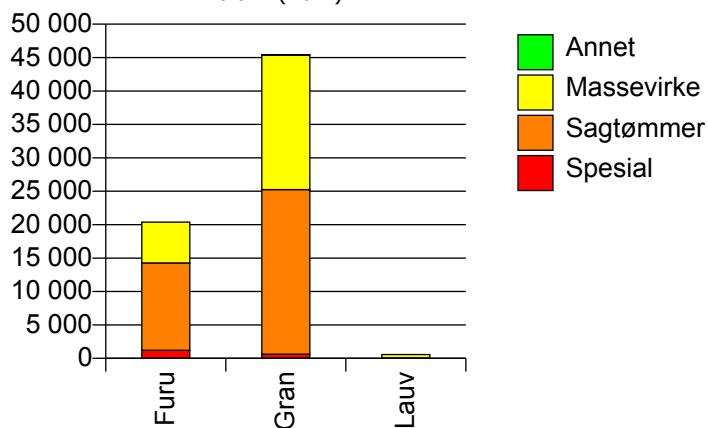


## 631 FLESBERG

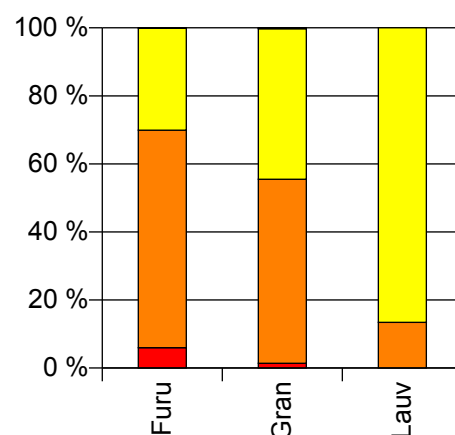
## Volum 2010 (kbm)

	Spesial	Sagtømmer	Massevirke	Annet	Vrak	Sum:
<b>Furu</b>	1 217	13 053	6 119		17	<b>20 406</b>
<b>Gran</b>	635	24 618	20 122	74	50	<b>45 499</b>
<b>Lauv</b>		75	484	0		<b>559</b>
<b>Sum:</b>	<b>1 852</b>	<b>37 746</b>	<b>26 725</b>	<b>74</b>	<b>67</b>	<b>66 464</b>

Volum (kbm)



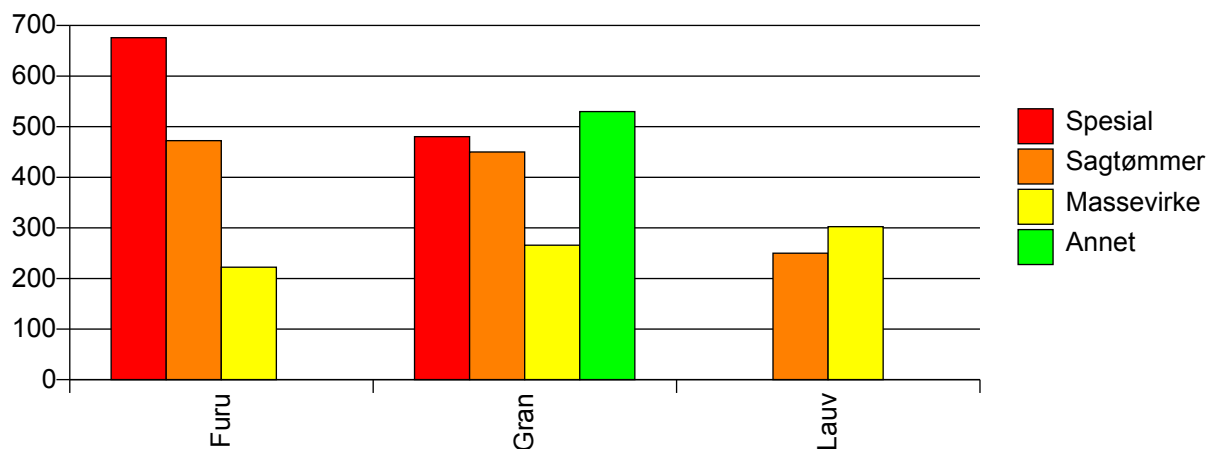
Volum (prosentfordelt)



## Gjennomsnittspris 2010 (kr/kbm)

	Spesial	Sagtømmer	Massevirke	Annet	Vrak	Snitt
<b>Furu</b>	676	472	222		0	<b>409</b>
<b>Gran</b>	480	450	266	530	0	<b>369</b>
<b>Lauv</b>		250	302	#DIV/0		<b>296</b>
<b>Snitt</b>	<b>609</b>	<b>457</b>	<b>256</b>	<b>534</b>	<b>0</b>	<b>380</b>

Gjennomsnittspris (kr/kbm)

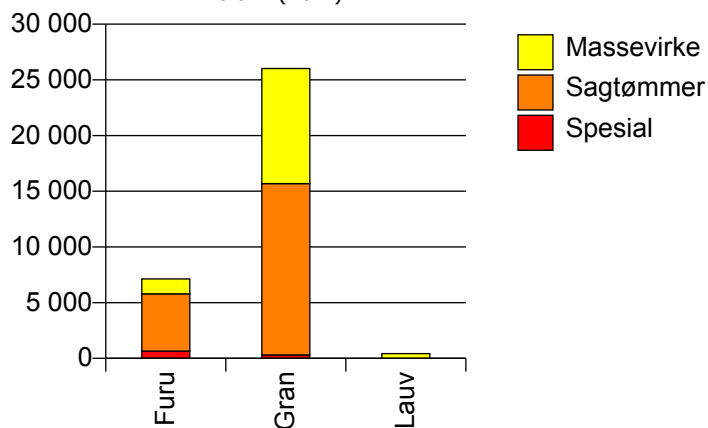


## 632 ROLLAG

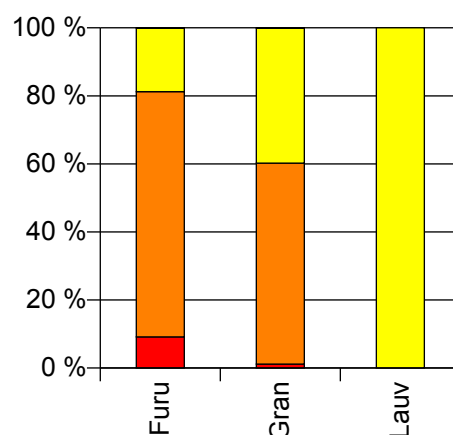
## Volum 2010 (kbm)

	Spesial	Sagtømmer	Massevirke	Vrak	Sum:
<b>Furu</b>	652	5 140	1 333	5	<b>7 130</b>
<b>Gran</b>	304	15 380	10 332	26	<b>26 042</b>
<b>Lauv</b>			429		<b>429</b>
<b>Sum:</b>	<b>956</b>	<b>20 520</b>	<b>12 094</b>	<b>31</b>	<b>33 601</b>

Volum (kbm)



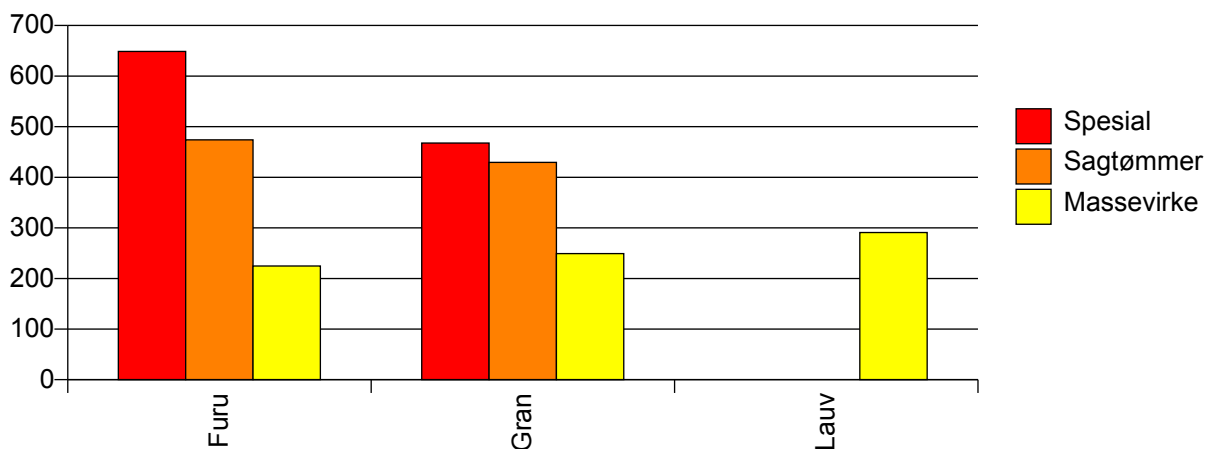
Volum (prosentfordelt)



## Gjennomsnittspris 2010 (kr/kbm)

	Spesial	Sagtømmer	Massevirke	Vrak	Snitt
<b>Furu</b>	649	474	225	0	<b>443</b>
<b>Gran</b>	468	430	249	0	<b>358</b>
<b>Lauv</b>			291		<b>291</b>
<b>Snitt</b>	<b>591</b>	<b>441</b>	<b>248</b>	<b>0</b>	<b>375</b>

Gjennomsnittspris (kr/kbm)

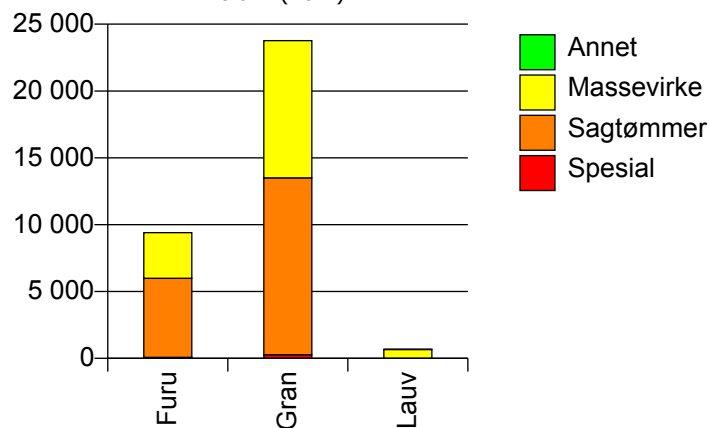


## 633 NORE OG UVDAL

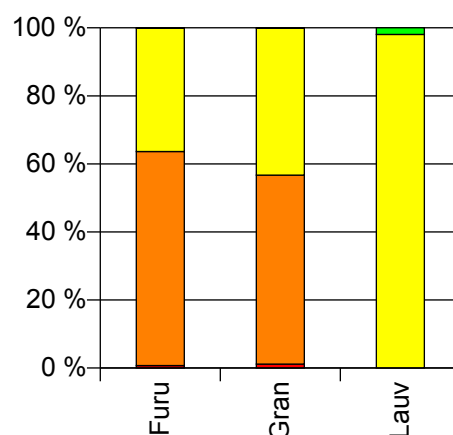
## Volum 2010 (kbm)

	Spesial	Sagtømmer	Massevirke	Annet	Vrak	Sum:
<b>Furu</b>	70	5 921	3 407		14	<b>9 412</b>
<b>Gran</b>	274	13 224	10 271		36	<b>23 805</b>
<b>Lauv</b>			659	13		<b>672</b>
<b>Sum:</b>	<b>344</b>	<b>19 145</b>	<b>14 337</b>	<b>13</b>	<b>50</b>	<b>33 889</b>

Volum (kbm)



Volum (prosentfordelt)



## Gjennomsnittspris 2010 (kr/kbm)

	Spesial	Sagtømmer	Massevirke	Annet	Vrak	Snitt
<b>Furu</b>	675	435	221		0	<b>359</b>
<b>Gran</b>	463	431	253		0	<b>354</b>
<b>Lauv</b>			291	208		<b>290</b>
<b>Snitt</b>	<b>506</b>	<b>432</b>	<b>247</b>	<b>208</b>	<b>0</b>	<b>354</b>

Gjennomsnittspris (kr/kbm)

