

Virkestatistikk fra
SKOG-DATA AS

Aust-Agder m/kommuner

Dataene i rapporten er hentet fra databasen som inneholder virkesdata med tilhørende innbetalinger av skogavgift. Rapporten er laget med Business Objects, som er sluttbrukerverktøyet i Skog-Data sine nye datavarehus-løsninger. Business Objects er ett meget sterkt rapportverktøy som kan presentere store mengder data effektivt.

Rapportene kan lastes ned fra www.skogdata.no/statistikk

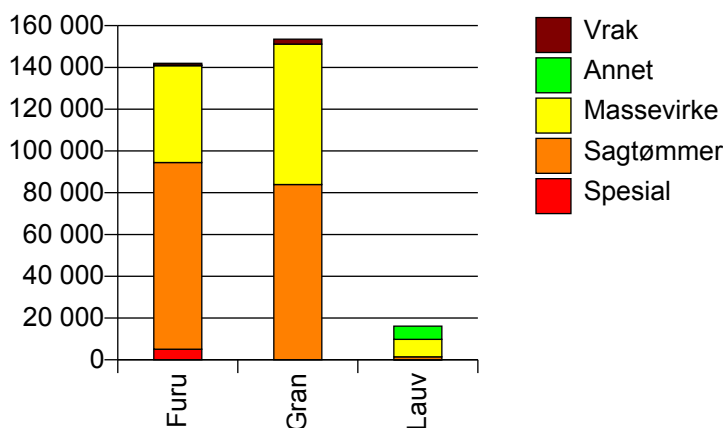
For mer informasjon, kontakt: tabh@skogdata.no

Aust-Agder

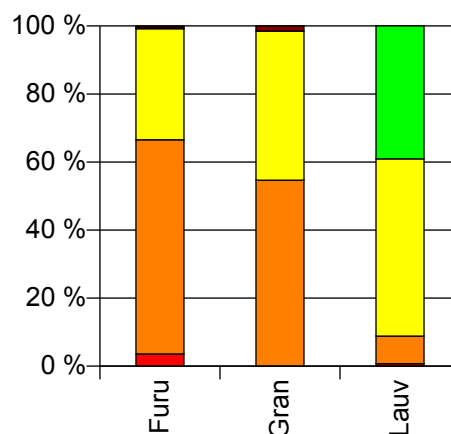
Volum 2010

	Spesial	Sagtømmer	Massevirke	Annet	Vrak	Sum:
Furu	5 067	89 416	46 354	307	823	141 967
Gran	7	83 920	67 252		2 329	153 508
Lauv	115	1 314	8 399	6 305	0	16 133
Sum:	5 189	174 650	122 005	6 612	3 152	311 608

Volum (kbm)



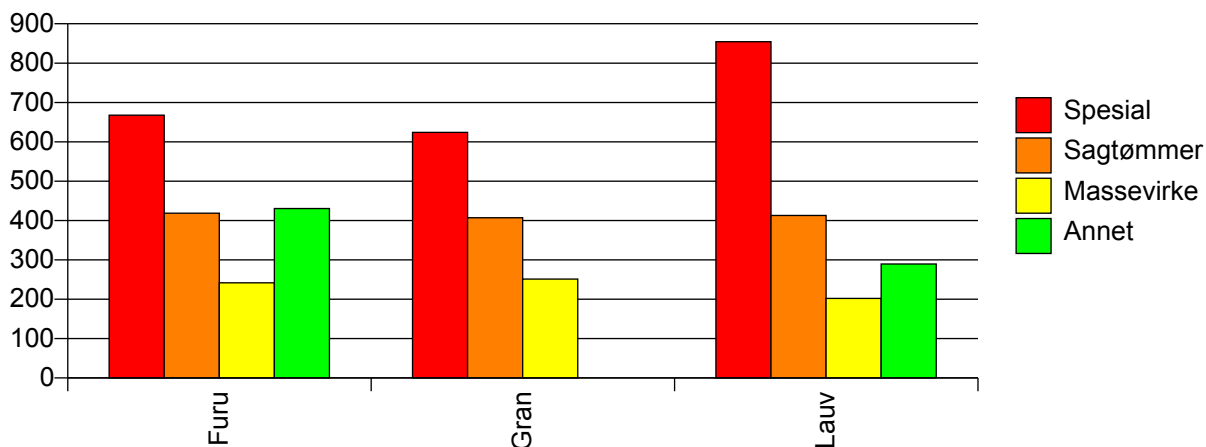
Volum (prosentfordelt)



Gjennomsnittspris 2010 (kr/kbm)

	Spesial	Sagtømmer	Massevirke	Annet	Vrak	Snitt:
Furu	668	419	242	430	0	367
Gran	624	407	251		0	333
Lauv	854	413	202	289	#DIV/0	258
Snitt:	672	413	244	296	0	345

Gjennomsnittspris (kr/kbm)

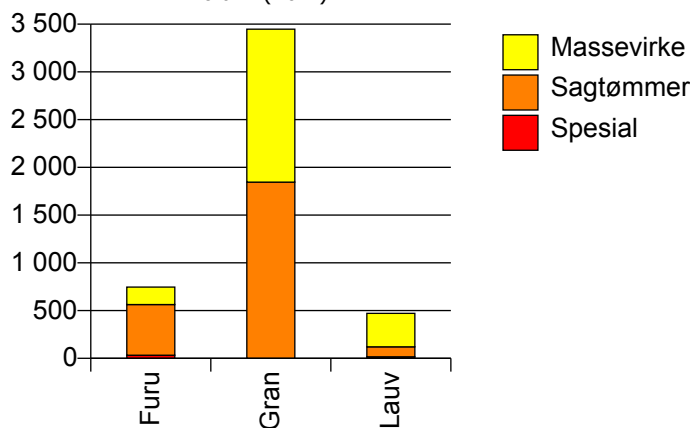


901 RISØR

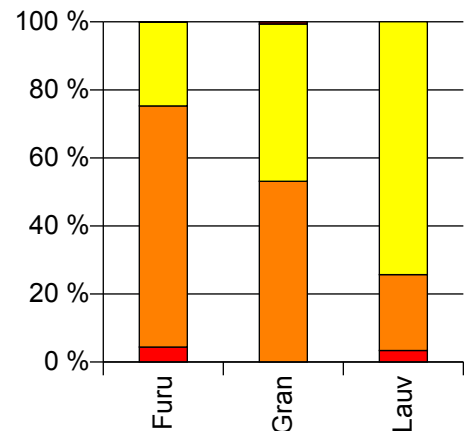
Volum 2010 (kbm)

	Spesial	Sagtømmer	Massevirke	Vrak	Sum:
Furu	33	530	184	1	748
Gran		1 845	1 603	23	3 471
Lauv	16	105	350		471
Sum:	49	2 480	2 137	24	4 690

Volum (kbm)



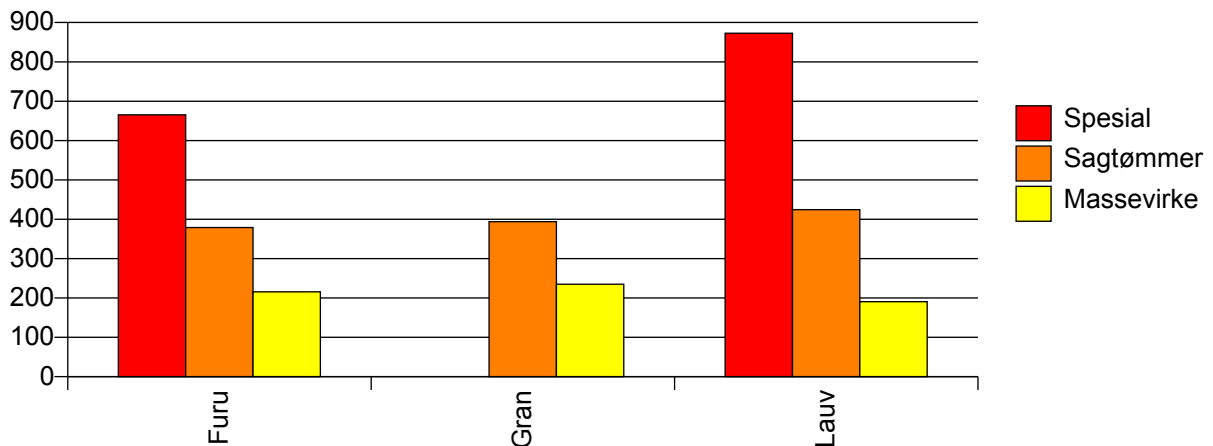
Volum (prosentfordelt)



Gjennomsnittspris 2010 (kr/kbm)

	Spesial	Sagtømmer	Massevirke	Vrak	Snitt
Furu	665	379	216	0	351
Gran		394	235	0	318
Lauv	873	425	191		266
Snitt	733	392	226	0	318

Gjennomsnittspris (kr/kbm)

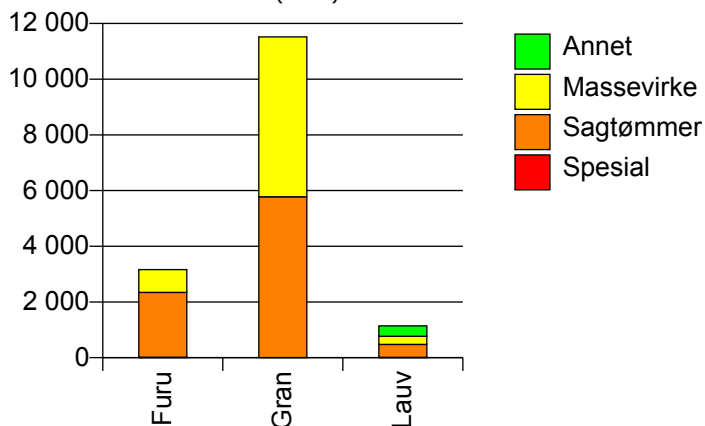


904 GRIMSTAD

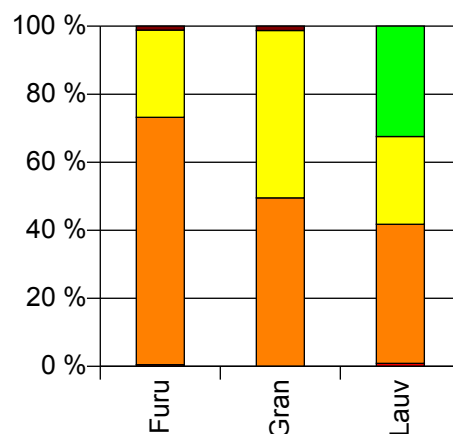
Volum 2010 (kbm)

	Spesial	Sagtømmer	Massevirke	Annet	Vrak	Sum:
Furu	16	2 326	821		37	3 200
Gran		5 777	5 744		147	11 668
Lauv	10	466	294	370	0	1 140
Sum:	26	8 569	6 859	370	184	16 008

Volum (kbm)



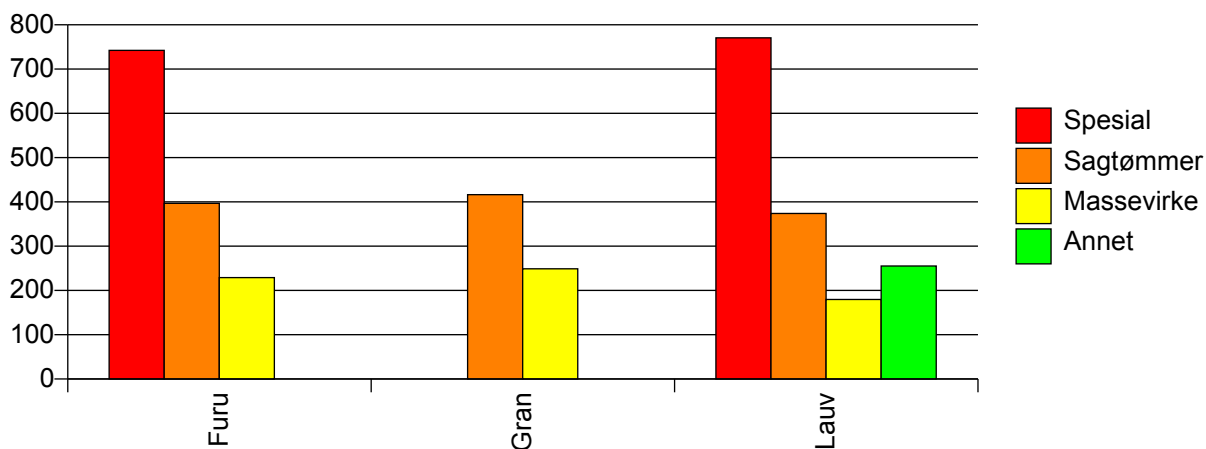
Volum (prosentfordelt)



Gjennomsnittspris 2010 (kr/kbm)

	Spesial	Sagtømmer	Massevirke	Annet	Vrak	Snitt
Furu	742	397	229		0	351
Gran		417	249		0	329
Lauv	771	374	180	255	#DIV/0	289
Snitt	753	409	244	255	0	330

Gjennomsnittspris (kr/kbm)

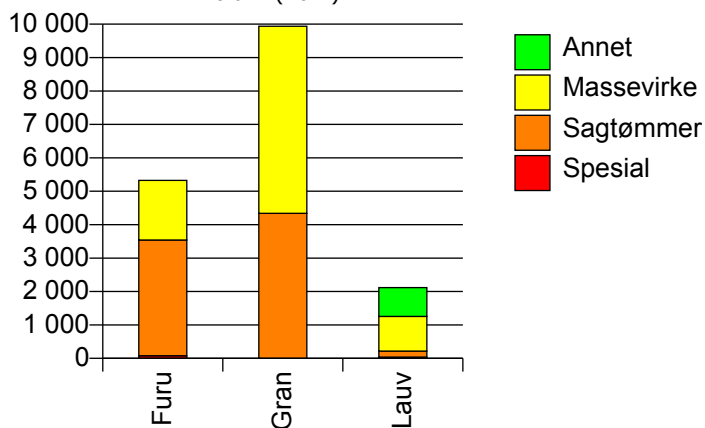


906 ARENDAL

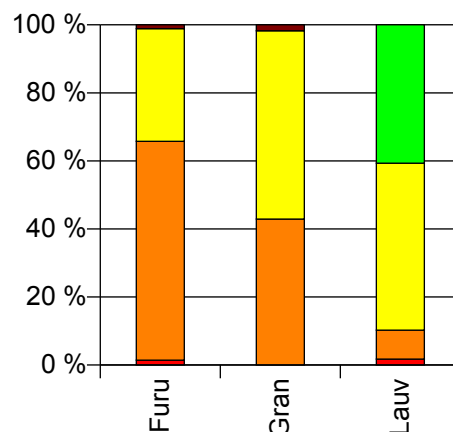
Volum 2010 (kbm)

	Spesial	Sagtømmer	Massevirke	Annet	Vrak	Sum:
Furu	76	3 465	1 784		60	5 385
Gran		4 340	5 600		175	10 115
Lauv	37	180	1 039	861		2 117
Sum:	113	7 985	8 423	861	235	17 617

Volum (kbm)



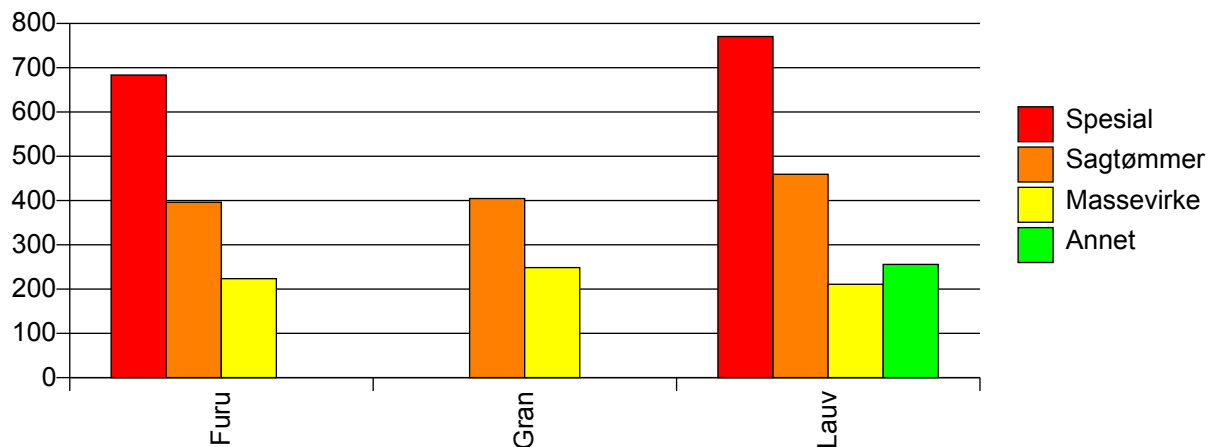
Volum (prosentfordelt)



Gjennomsnittspris 2010 (kr/kbm)

	Spesial	Sagtømmer	Massevirke	Annet	Vrak	Snitt
Furu	684	396	224		0	339
Gran		405	249		0	311
Lauv	771	460	211	256		260
Snitt	712	402	239	256	0	314

Gjennomsnittspris (kr/kbm)

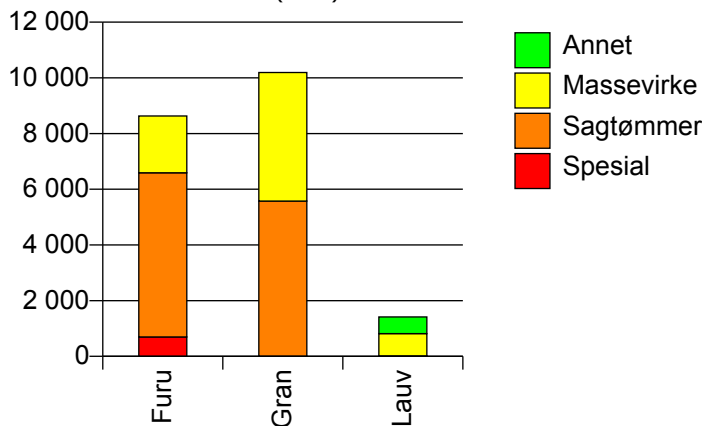


911 GJERSTAD

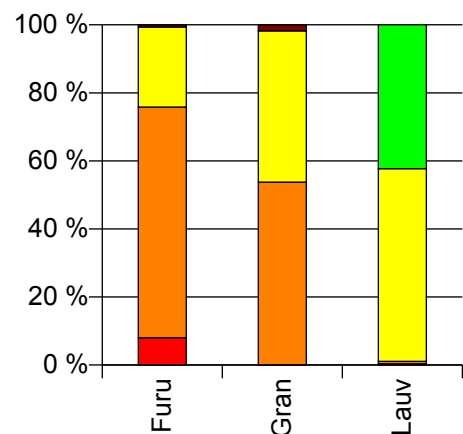
Volum 2010 (kbm)

	Spesial	Sagtømmer	Massevirke	Annet	Vrak	Sum:
Furu	696	5 894	2 043		56	8 689
Gran	7	5 569	4 614		184	10 374
Lauv	5	10	801	598		1 414
Sum:	708	11 473	7 458	598	240	20 477

Volum (kbm)



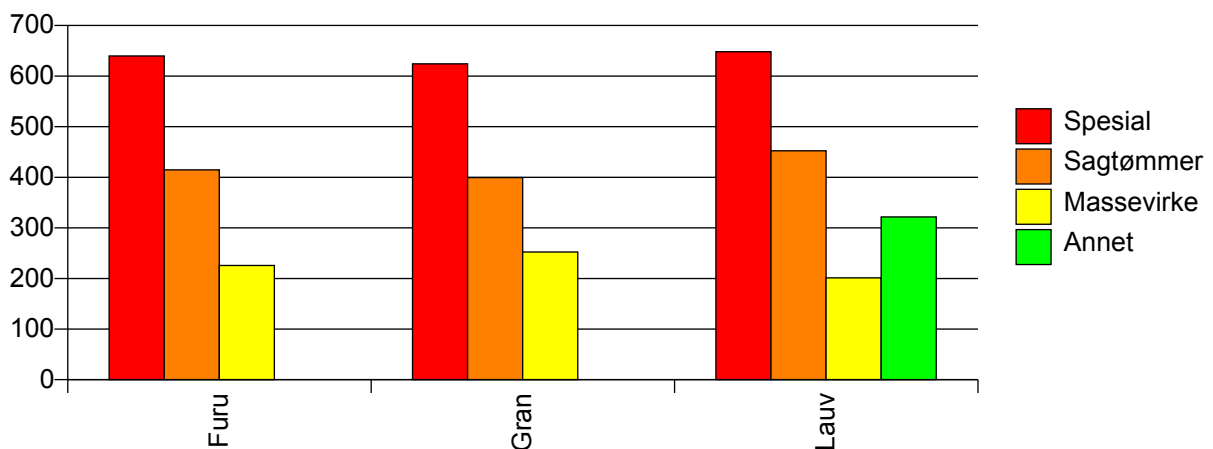
Volum (prosentfordelt)



Gjennomsnittspris 2010 (kr/kbm)

	Spesial	Sagtømmer	Massevirke	Annet	Vrak	Snitt
Furu	640	415	226		0	386
Gran	624	399	252		0	327
Lauv	648	453	201	322		255
Snitt	640	407	240	322	0	347

Gjennomsnittspris (kr/kbm)

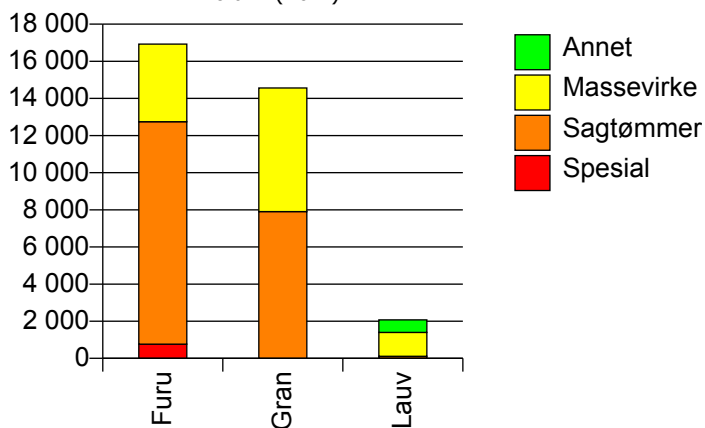


912 VEGÅRSHEI

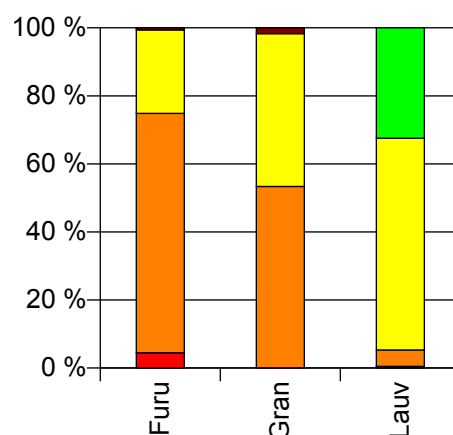
Volum 2010 (kbm)

	Spesial	Sagtømmer	Massevirke	Annet	Vrak	Sum:
Furu	766	11 981	4 180		103	17 030
Gran		7 908	6 657		250	14 815
Lauv	10	100	1 289	672	0	2 071
Sum:	776	19 989	12 126	672	353	33 916

Volum (kbm)



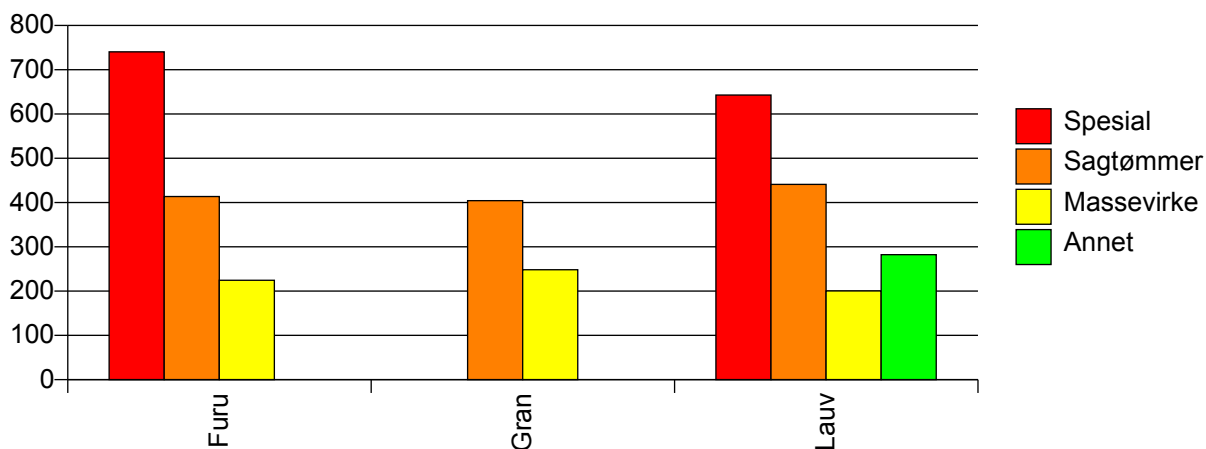
Volum (prosentfordelt)



Gjennomsnittspris 2010 (kr/kbm)

	Spesial	Sagtømmer	Massevirke	Annet	Vrak	Snitt
Furu	741	414	224		0	380
Gran		404	248		0	328
Lauv	643	441	200	283	#DIV/0	241
Snitt	739	410	235	283	0	348

Gjennomsnittspris (kr/kbm)

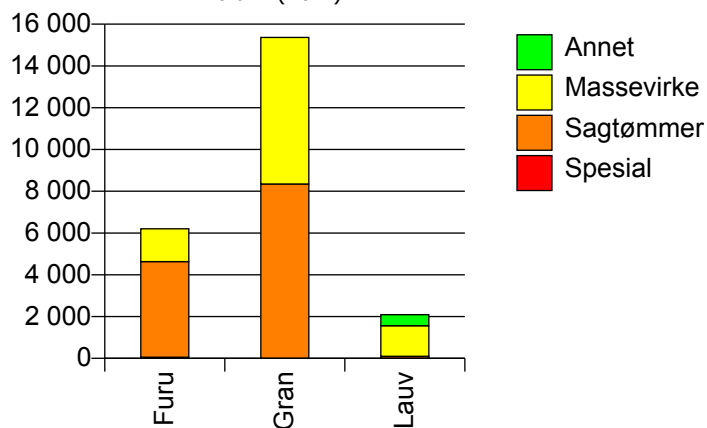


914 TVEDESTRAND

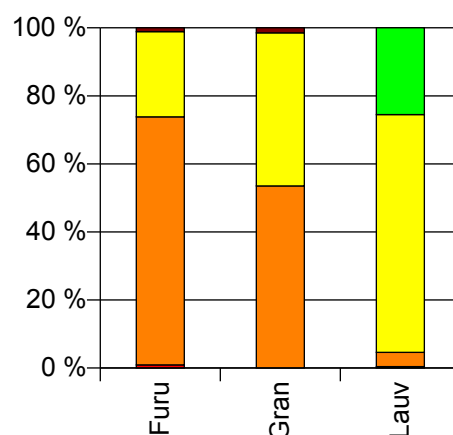
Volum 2010 (kbm)

	Spesial	Sagtømmer	Massevirke	Annet	Vrak	Sum:
Furu	57	4 577	1 570		71	6 275
Gran		8 346	7 019		227	15 592
Lauv	9	87	1 462	533		2 091
Sum:	66	13 010	10 051	533	298	23 958

Volum (kbm)



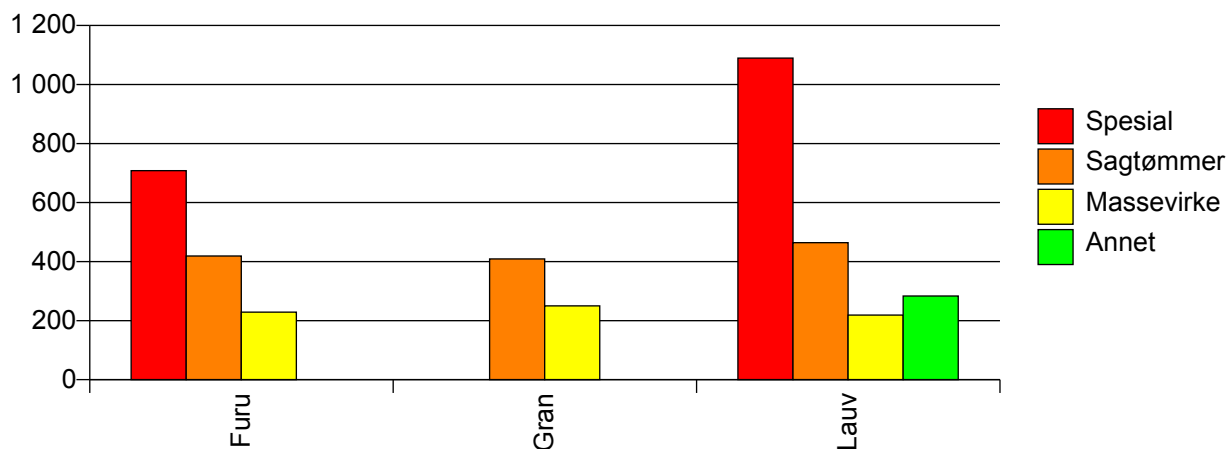
Volum (prosentfordelt)



Gjennomsnittspris 2010 (kr/kbm)

	Spesial	Sagtømmer	Massevirke	Annet	Vrak	Snitt
Furu	708	419	229		0	369
Gran		409	250		0	332
Lauv	1 090	464	219	283		249
Snitt	760	413	242	283	0	334

Gjennomsnittspris (kr/kbm)

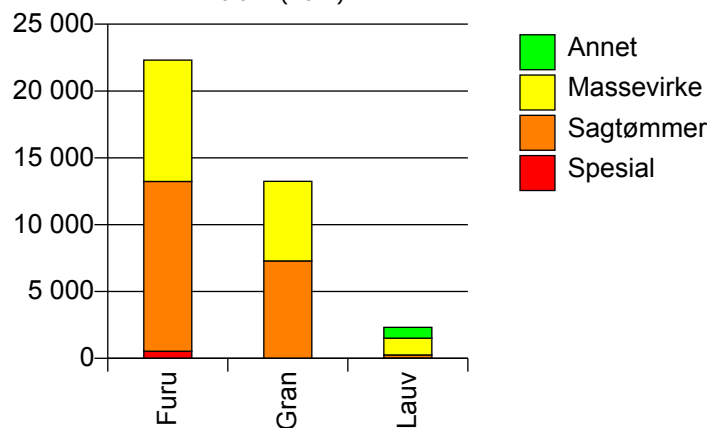


919 FROLAND

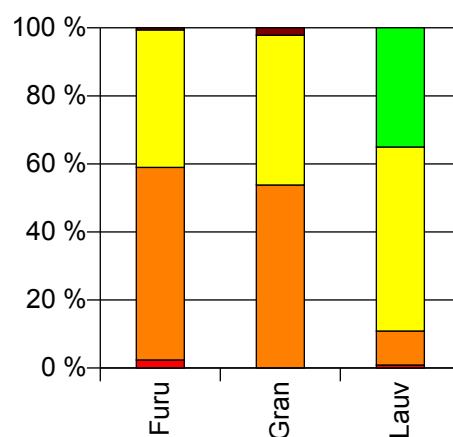
Volum 2010 (kbm)

	Spesial	Sagtømmer	Massevirke	Annet	Vrak	Sum:
Furu	533	12 704	9 075		138	22 450
Gran		7 289	5 959		295	13 543
Lauv	20	232	1 255	812		2 319
Sum:	553	20 225	16 289	812	433	38 312

Volum (kbm)



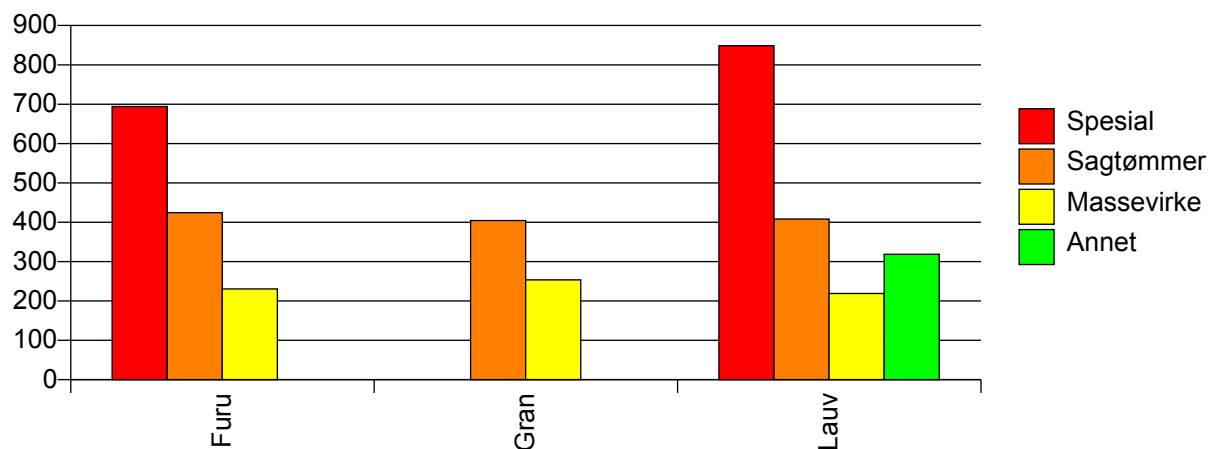
Volum (prosentfordelt)



Gjennomsnittspris 2010 (kr/kbm)

	Spesial	Sagtømmer	Massevirke	Annet	Vrak	Snitt
Furu	694	425	231		0	350
Gran		404	254		0	329
Lauv	849	408	219	319		278
Snitt	700	417	238	319	0	338

Gjennomsnittspris (kr/kbm)

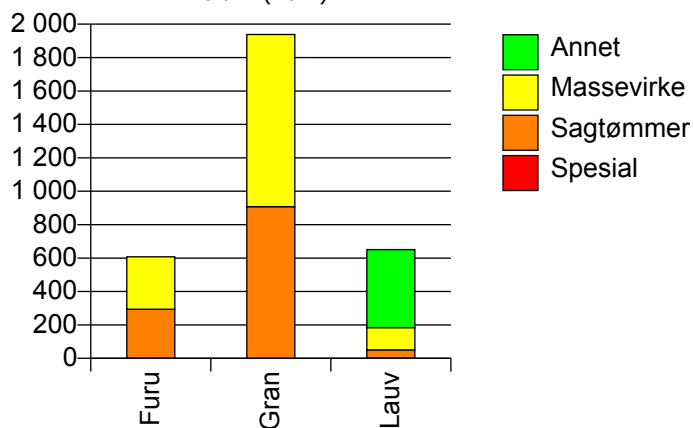


926 LILLESAND

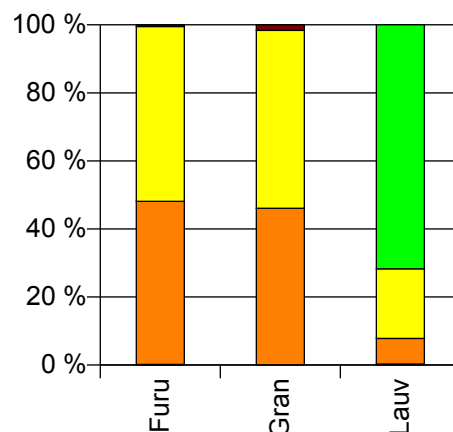
Volum 2010 (kbm)

	Spesial	Sagtømmer	Massevirke	Annet	Vrak	Sum:
Furu	1	293	314		3	611
Gran		908	1 030		32	1 970
Lauv	2	49	133	467	0	651
Sum:	3	1 250	1 477	467	35	3 232

Volum (kbm)



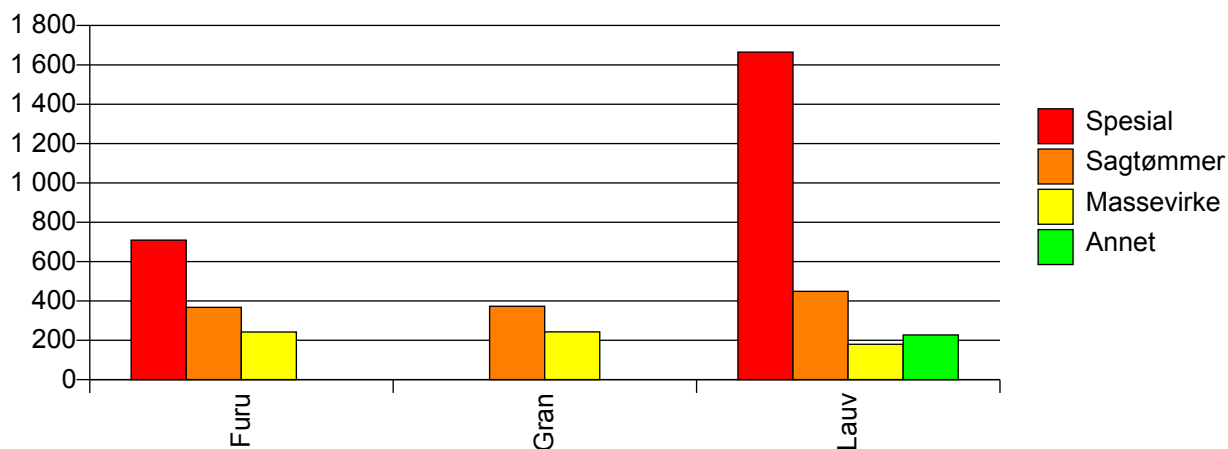
Volum (prosentfordelt)



Gjennomsnittspris 2010 (kr/kbm)

	Spesial	Sagtømmer	Massevirke	Annet	Vrak	Snitt
Furu	709	368	243		0	302
Gran		373	243		0	299
Lauv	1 665	449	180	227	#DIV/0	239
Snitt	1 346	375	237	227	0	287

Gjennomsnittspris (kr/kbm)

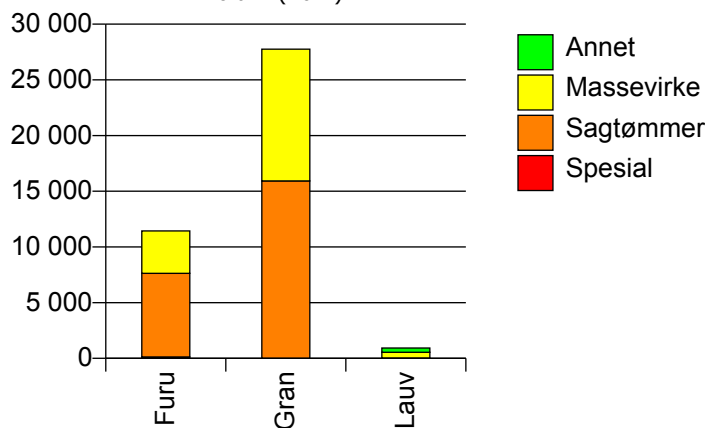


928 BIRKENES

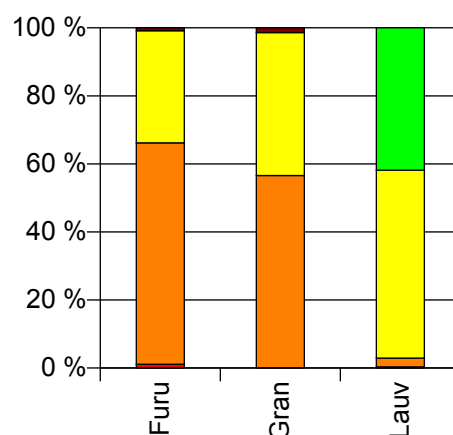
Volum 2010 (kbm)

	Spesial	Sagtømmer	Massevirke	Annet	Vrak	Sum:
Furu	128	7 504	3 802		97	11 531
Gran		15 931	11 826		391	28 148
Lauv	3	24	514	389		930
Sum:	131	23 459	16 142	389	488	40 609

Volum (kbm)



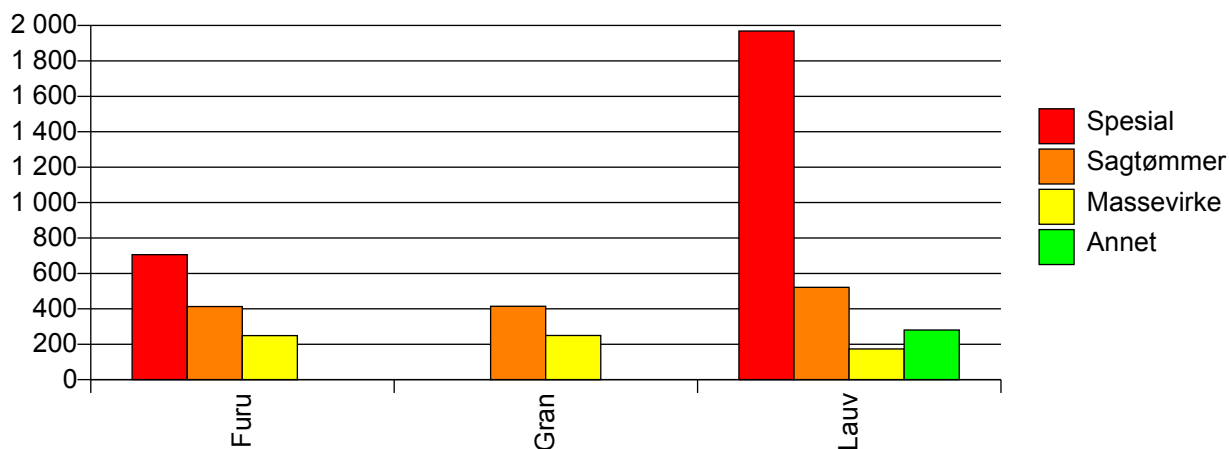
Volum (prosentfordelt)



Gjennomsnittspris 2010 (kr/kbm)

	Spesial	Sagtømmer	Massevirke	Annet	Vrak	Snitt
Furu	706	413	249		0	358
Gran		415	250		0	340
Lauv	1 969	521	173	280		233
Snitt	735	414	247	280	0	343

Gjennomsnittspris (kr/kbm)

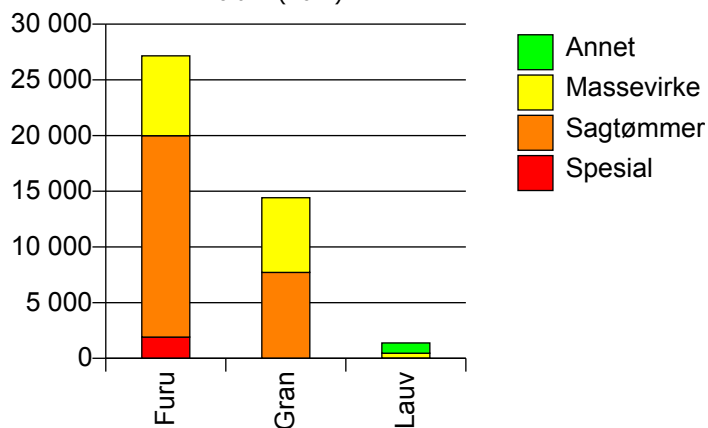


929 ÅMLI

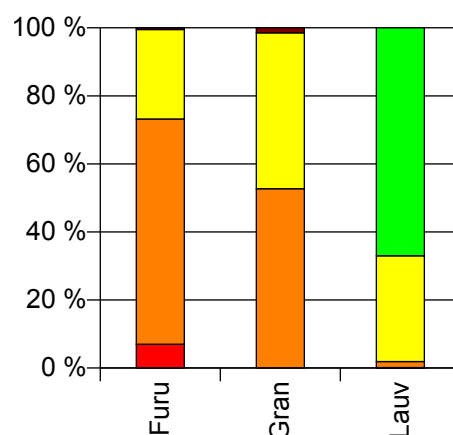
Volum 2010 (kbm)

	Spesial	Sagtømmer	Massevirke	Annet	Vrak	Sum:
Furu	1 905	18 077	7 172		138	27 292
Gran		7 714	6 708		214	14 636
Lauv	2	24	429	924		1 379
Sum:	1 907	25 815	14 309	924	352	43 307

Volum (kbm)



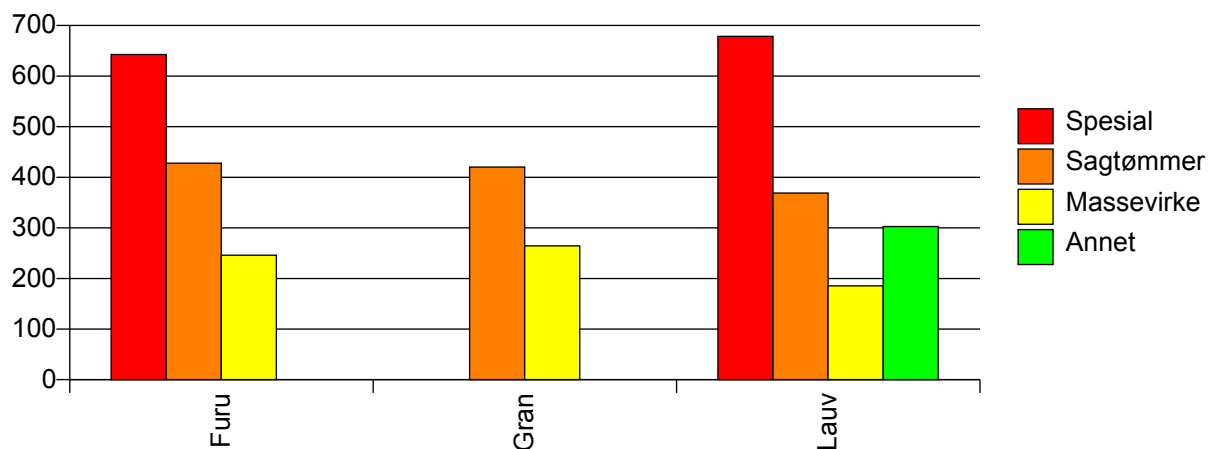
Volum (prosentfordelt)



Gjennomsnittspris 2010 (kr/kbm)

	Spesial	Sagtømmer	Massevirke	Annet	Vrak	Snitt
Furu	643	428	246		0	393
Gran		420	265		0	343
Lauv	679	369	185	303		268
Snitt	643	426	253	303	0	372

Gjennomsnittspris (kr/kbm)

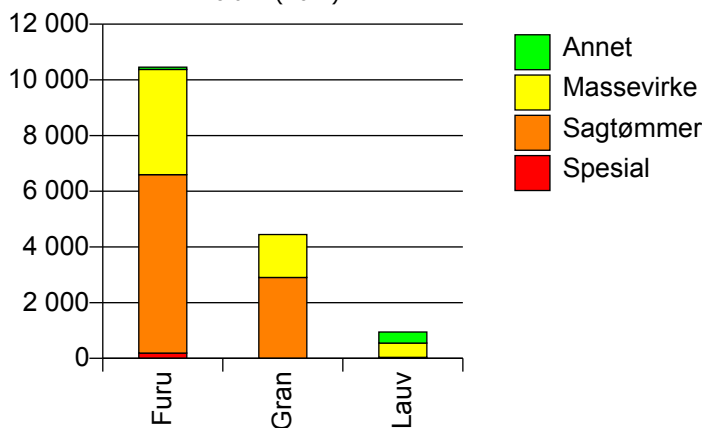


935 IVELAND

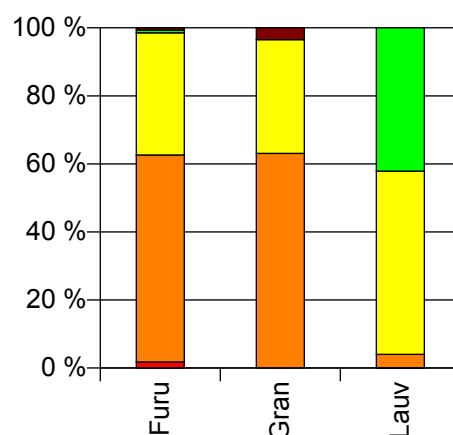
Volum 2010 (kbm)

	Spesial	Sagtømmer	Massevirke	Annet	Vrak	Sum:
Furu	187	6 408	3 780	83	73	10 531
Gran		2 906	1 540		159	4 605
Lauv	1	37	510	399		947
Sum:	188	9 351	5 830	482	232	16 083

Volum (kbm)



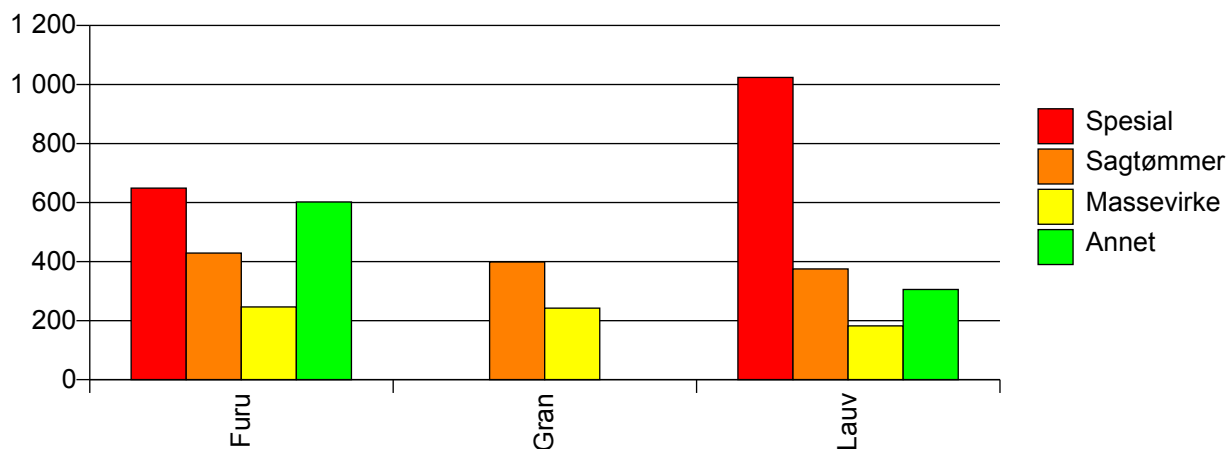
Volum (prosentfordelt)



Gjennomsnittspris 2010 (kr/kbm)

	Spesial	Sagtømmer	Massevirke	Annet	Vrak	Snitt
Furu	649	429	247	602	0	366
Gran		399	242		0	333
Lauv	1 024	375	182	305		243
Snitt	651	419	240	357	0	349

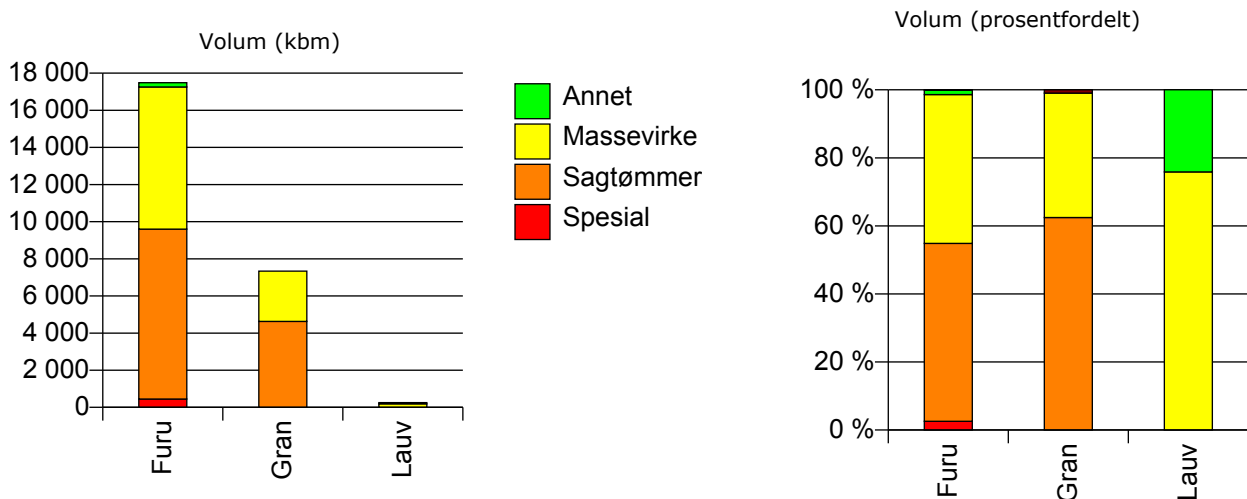
Gjennomsnittspris (kr/kbm)



937 EVJE OG HORNNES

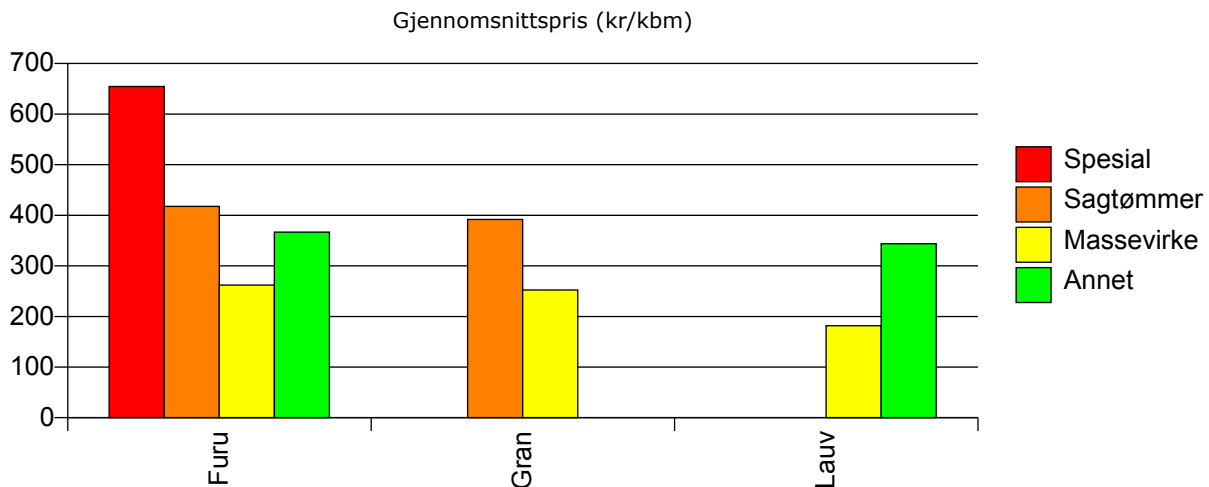
Volum 2010 (kbm)

	Spesial	Sagtømmer	Massevirke	Annet	Vrak	Sum:
Furu	451	9 151	7 658	224	18	17 502
Gran		4 626	2 710		71	7 407
Lauv			192	61		253
Sum:	451	13 777	10 560	285	89	25 162



Gjennomsnittspris 2010 (kr/kbm)

	Spesial	Sagtømmer	Massevirke	Annet	Vrak	Snitt
Furu	655	418	262	367	0	355
Gran		392	252		0	337
Lauv			182	344		221
Snitt	655	409	258	362	0	348

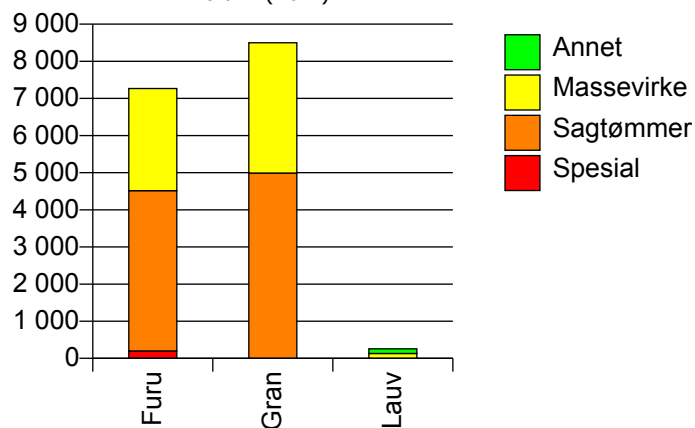


938 BYGLAND

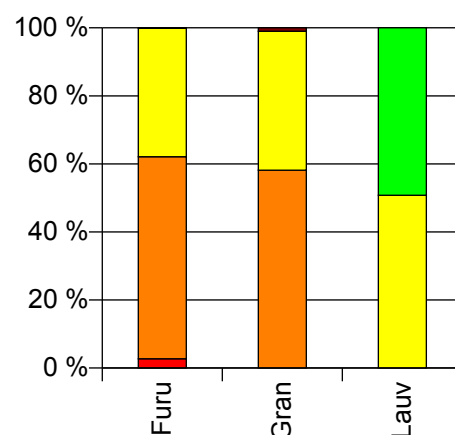
Volum 2010 (kbm)

	Spesial	Sagtømmer	Massevirke	Annet	Vrak	Sum:
Furu	199	4 318	2 749		7	7 273
Gran		4 991	3 508		86	8 585
Lauv			131	127		258
Sum:	199	9 309	6 388	127	93	16 116

Volum (kbm)



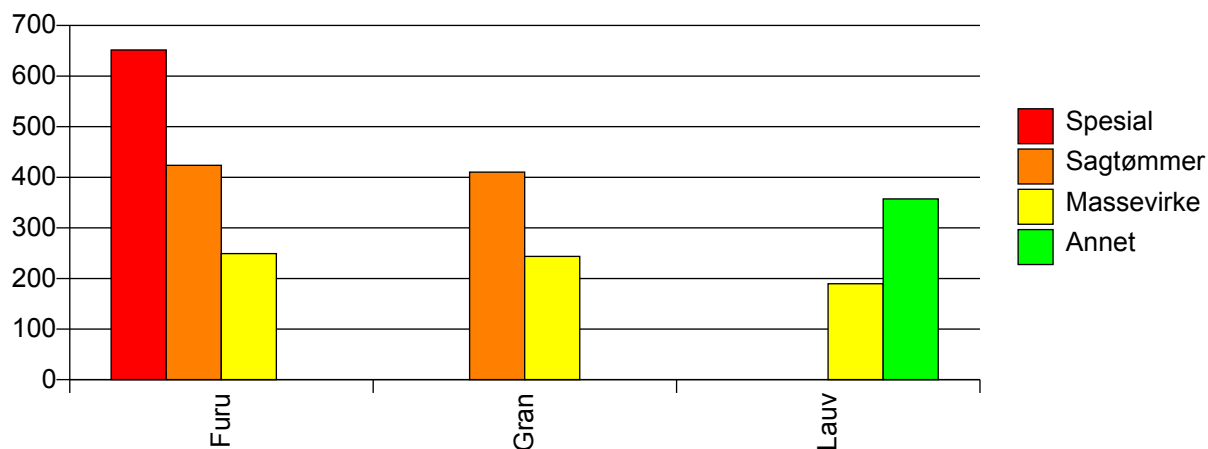
Volum (prosentfordelt)



Gjennomsnittspris 2010 (kr/kbm)

	Spesial	Sagtømmer	Massevirke	Annet	Vrak	Snitt
Furu	652	424	249		0	364
Gran		410	244		0	338
Lauv			190	357		272
Snitt	652	416	245	357	0	348

Gjennomsnittspris (kr/kbm)

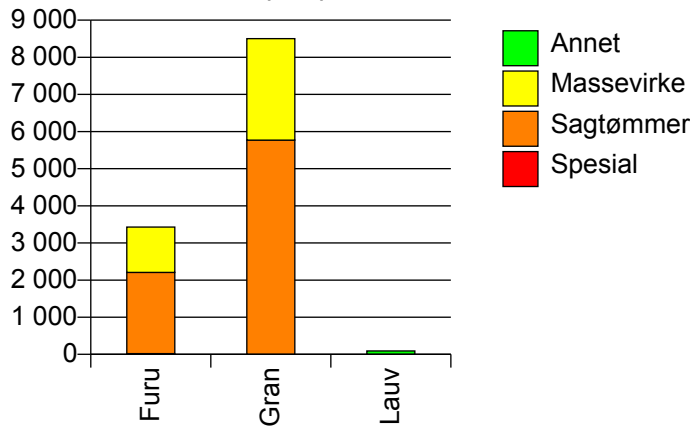


940 VALLE

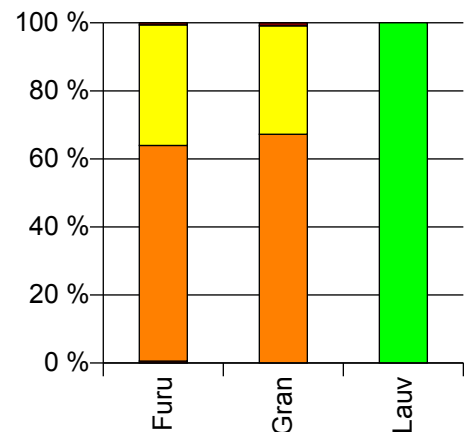
Volum 2010 (kbm)

	Spesial	Sagtømmer	Massevirke	Annet	Vrak	Sum:
Furu	19	2 188	1 222		21	3 450
Gran		5 770	2 734		75	8 579
Lauv				92		92
Sum:	19	7 958	3 956	92	96	12 121

Volum (kbm)



Volum (prosentfordelt)



Gjennomsnittspris 2010 (kr/kbm)

	Spesial	Sagtømmer	Massevirke	Annet	Vrak	Snitt
Furu	681	402	255		0	349
Gran		397	261		0	350
Lauv				379		379
Snitt	681	398	259	379	0	350

Gjennomsnittspris (kr/kbm)

