

Virkestatistikk fra

SKOG-DATA AS

Akershus m/kommuner

Dataene i rapporten er hentet fra databasen som inneholder virkesdata med tilhørende innbetalinger av skogavgift. Rapporten er laget med Business Objects, som er sluttbrukerverktøyet i Skog-Data sine nye datavarehus-løsninger. Business Objects er ett meget sterkt rapportverktøy som kan presentere store mengder data effektivt.

Rapportene kan lastes ned fra www.skogdata.no/statistikk

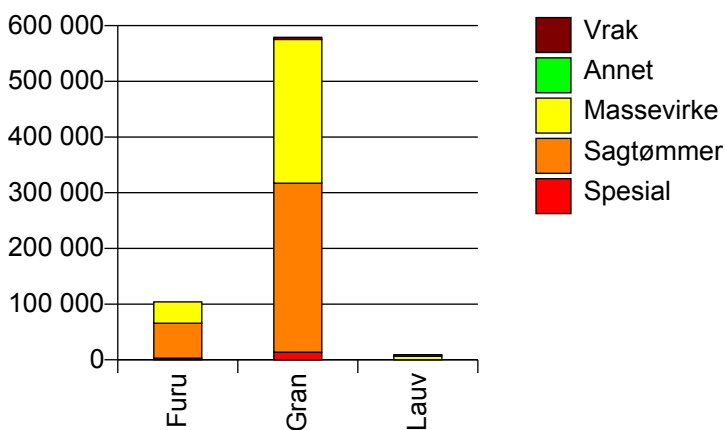
For mer informasjon, kontakt: tabh@skogdata.no

Akershus

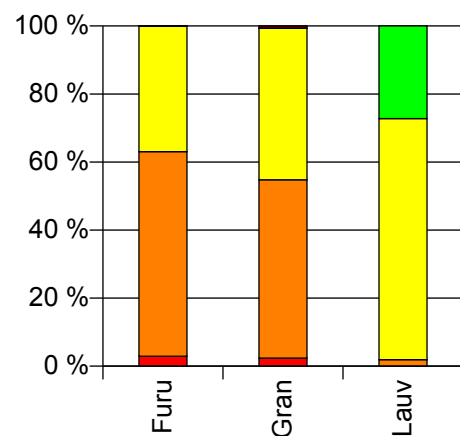
Volum 2010

	Spesial	Sagtømmer	Massevirke	Annet	Vrak	Sum:
Furu	3 049	62 610	38 403	8	34	104 104
Gran	13 753	303 465	257 903	22	3 839	578 982
Lauv		174	6 471	2 488		9 133
Sum:	16 802	366 249	302 777	2 518	3 873	692 219

Volum (kbm)



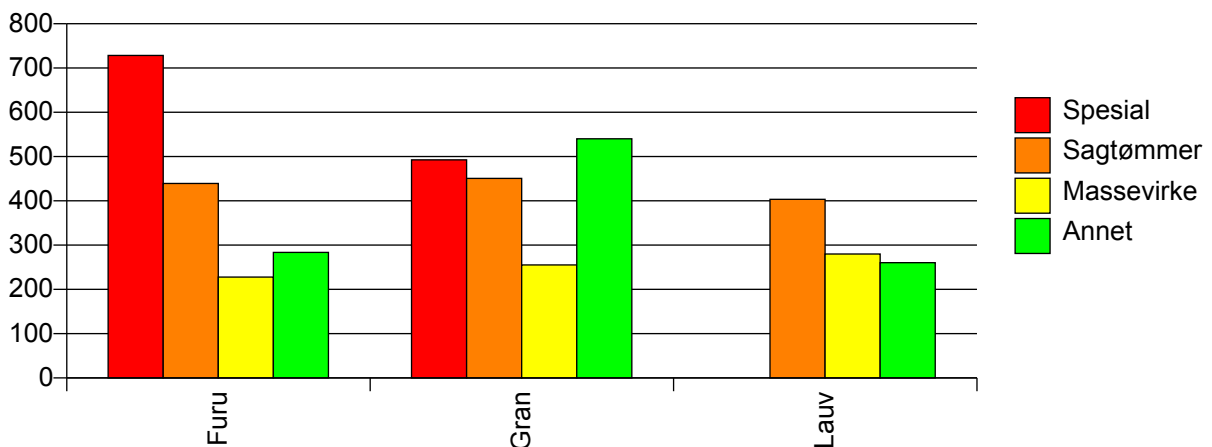
Volum (prosentfordelt)



Gjennomsnittspris 2010 (kr/kbm)

	Spesial	Sagtømmer	Massevirke	Annet	Vrak	Snitt:
Furu	729	439	228	284	0	370
Gran	492	451	255	540	0	362
Lauv		404	280	260		277
Snitt:	535	449	252	263	0	362

Gjennomsnittspris (kr/kbm)

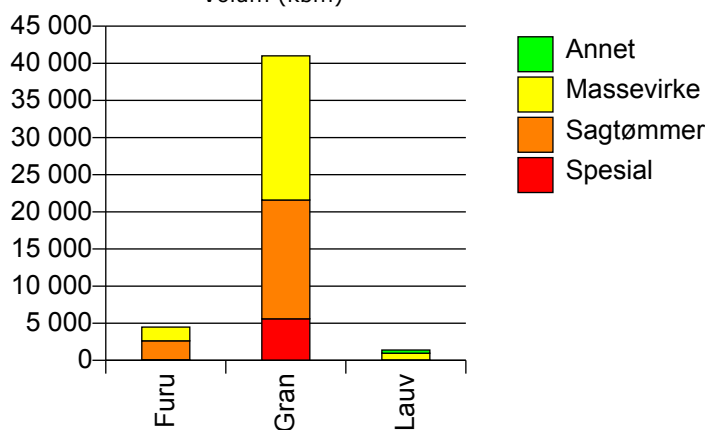


211 VESTBY

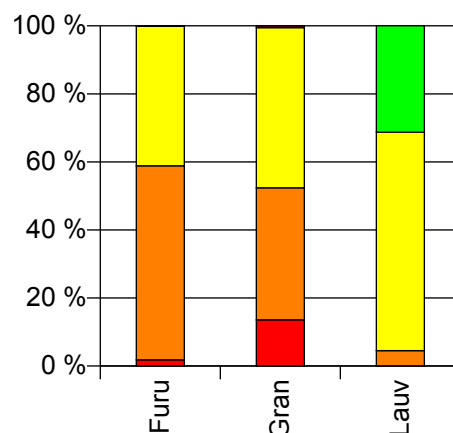
Volum 2010 (kbm)

	Spesial	Sagtømmer	Massevirke	Annet	Vrak	Sum:
Furu	82	2 557	1 842		2	4 483
Gran	5 594	16 001	19 413		224	41 232
Lauv		63	897	437		1 397
Sum:	5 676	18 621	22 152	437	226	47 112

Volum (kbm)



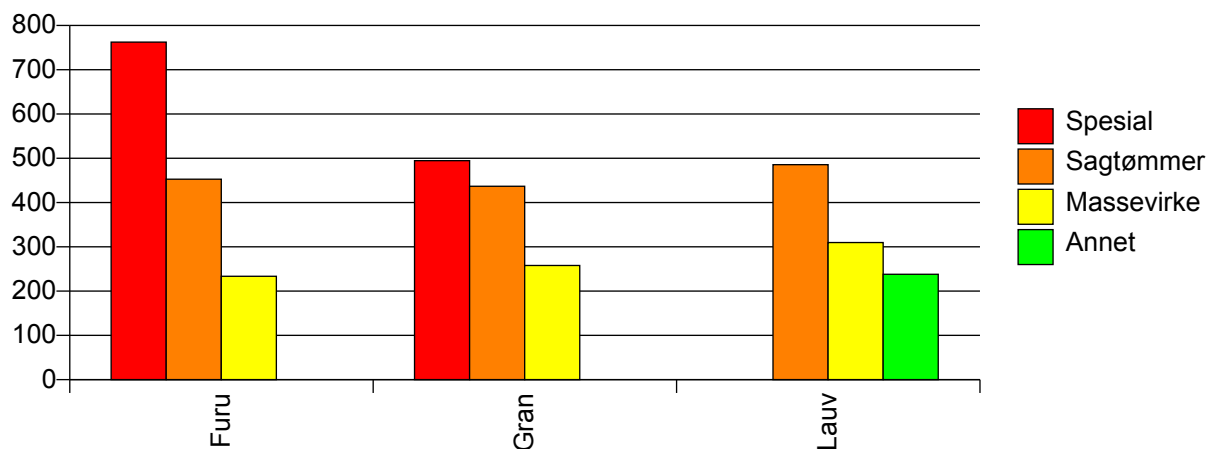
Volum (prosentfordelt)



Gjennomsnittspris 2010 (kr/kbm)

	Spesial	Sagtømmer	Massevirke	Annet	Vrak	Snitt
Furu	763	453	234		0	368
Gran	495	437	258		0	358
Lauv		486	310	238		295
Snitt	499	439	258	238	0	357

Gjennomsnittspris (kr/kbm)

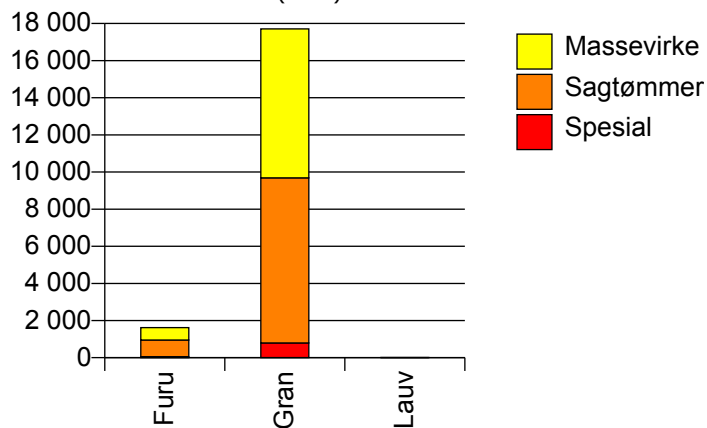


213 SKI

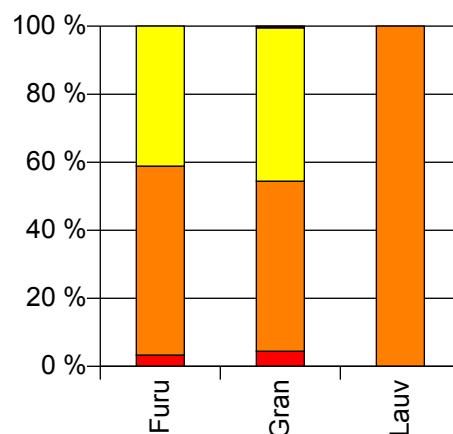
Volum 2010 (kbm)

	Spesial	Sagtømmer	Massevirke	Vrak	Sum:
Furu	54	901	667	0	1 622
Gran	792	8 896	8 019	87	17 794
Lauv		11			11
Sum:	846	9 808	8 686	87	19 427

Volum (kbm)



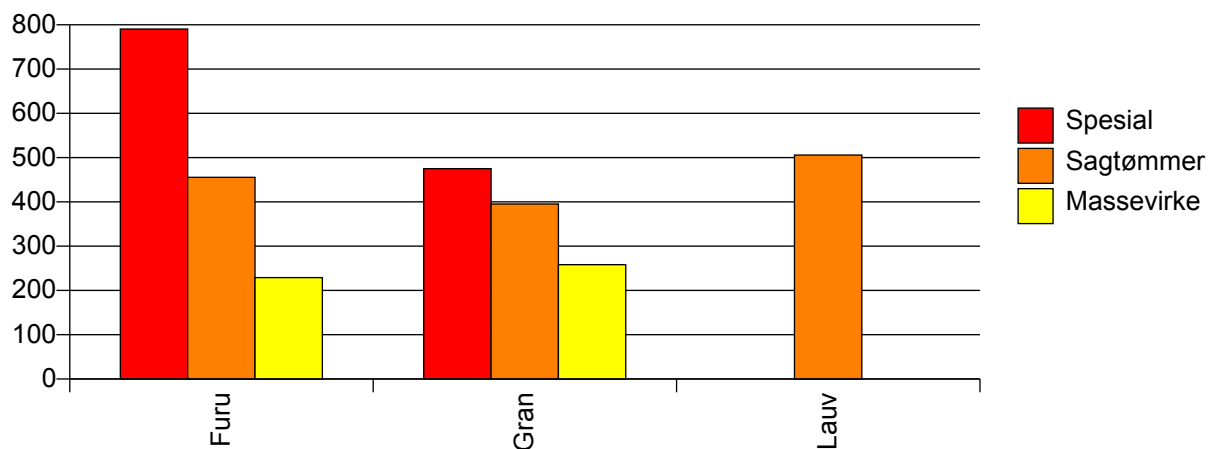
Volum (prosentfordelt)



Gjennomsnittspris 2010 (kr/kbm)

	Spesial	Sagtømmer	Massevirke	Vrak	Snitt
Furu	790	456	229	#DIV/0	374
Gran	475	395	258	0	335
Lauv		506			506
Snitt	495	401	256	0	339

Gjennomsnittspris (kr/kbm)

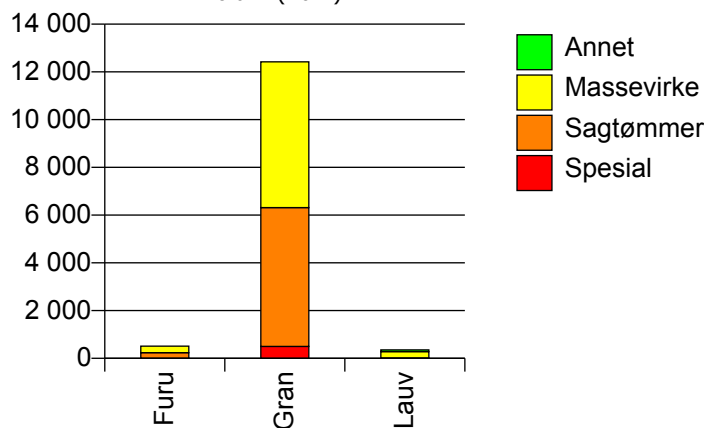


214 ÅS

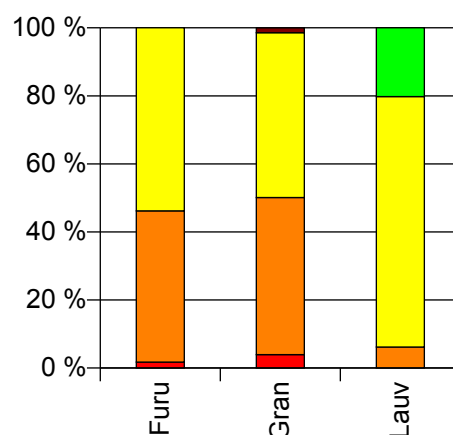
Volum 2010 (kbm)

	Spesial	Sagtømmer	Massevirke	Annet	Vrak	Sum:
Furu	9	227	275		0	511
Gran	498	5 817	6 107		178	12 600
Lauv		22	262	72		356
Sum:	507	6 066	6 644	72	178	13 467

Volum (kbm)



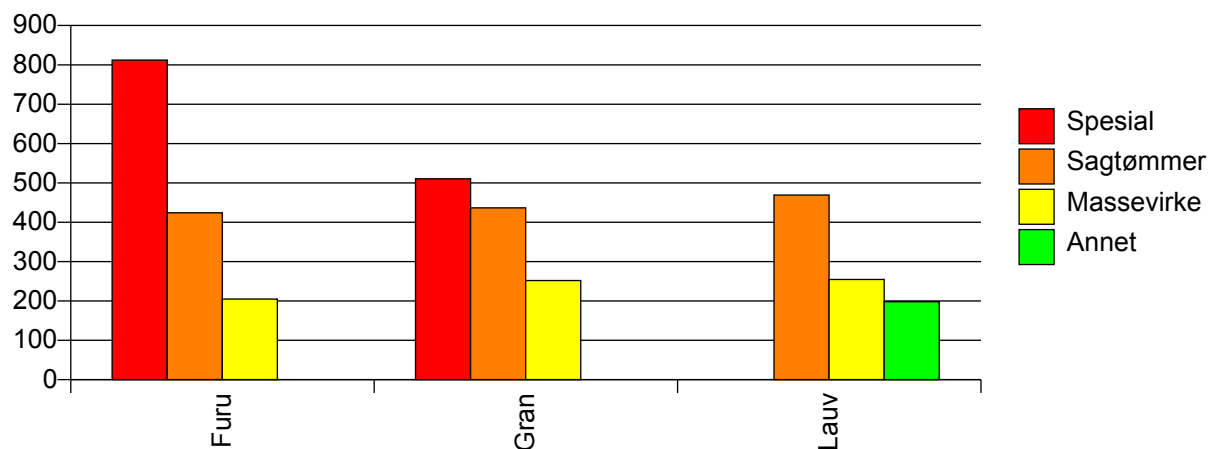
Volum (prosentfordelt)



Gjennomsnittspris 2010 (kr/kbm)

	Spesial	Sagtømmer	Massevirke	Annet	Vrak	Snitt
Furu	812	424	205		#DIV/0	313
Gran	510	437	252		0	344
Lauv		469	255	198		257
Snitt	516	436	250	198	0	340

Gjennomsnittspris (kr/kbm)

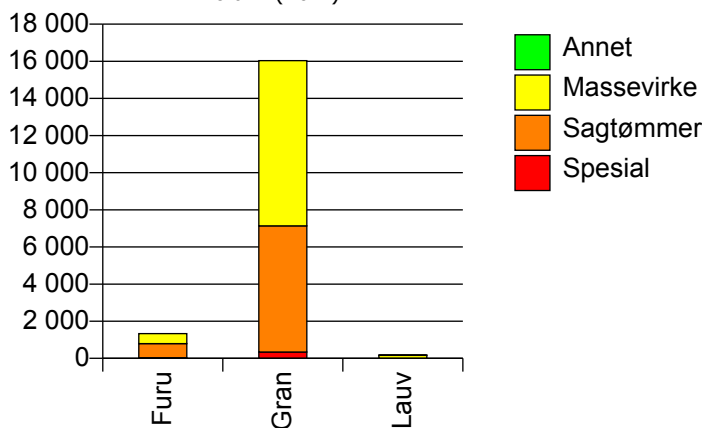


215 FROGN

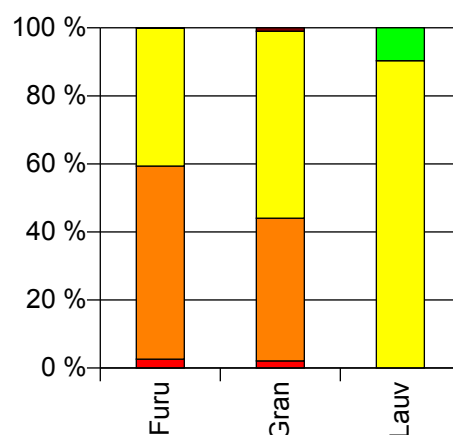
Volum 2010 (kbm)

	Spesial	Sagtømmer	Massevirke	Annet	Vrak	Sum:
Furu	35	757	541		1	1 334
Gran	339	6 798	8 899		164	16 200
Lauv			159	17		176
Sum:	374	7 555	9 599	17	165	17 710

Volum (kbm)



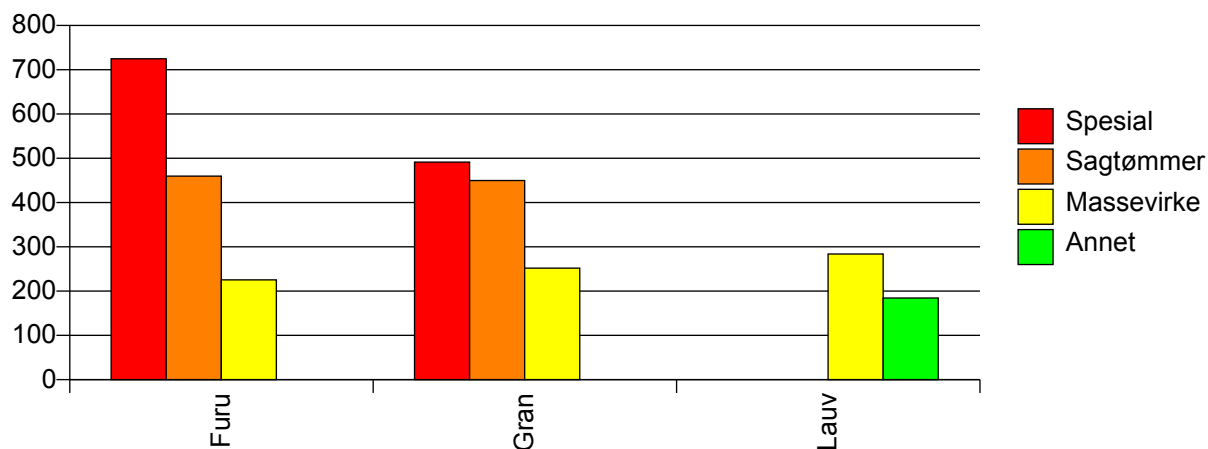
Volum (prosentfordelt)



Gjennomsnittspris 2010 (kr/kbm)

	Spesial	Sagtømmer	Massevirke	Annet	Vrak	Snitt
Furu	725	460	225		0	371
Gran	491	450	252		0	337
Lauv			284	184		274
Snitt	513	451	251	184	0	339

Gjennomsnittspris (kr/kbm)

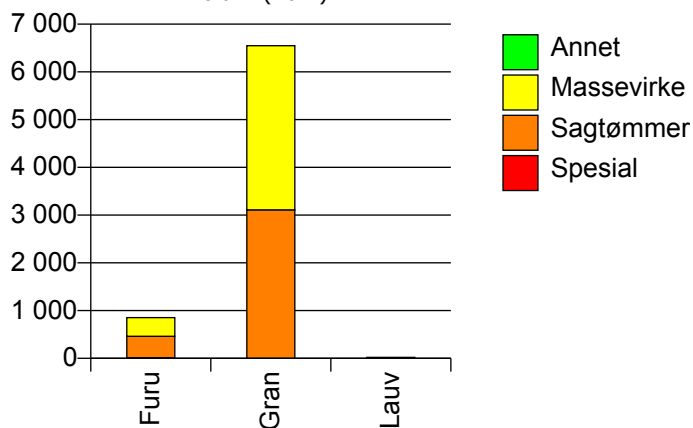


216 NESODDEN

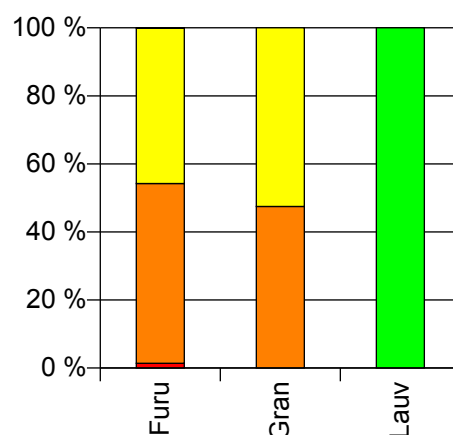
Volum 2010 (kbm)

	Spesial	Sagtømmer	Massevirke	Annet	Vrak	Sum:
Furu	12	451	390		1	854
Gran		3 110	3 439			6 549
Lauv				20		20
Sum:	12	3 561	3 829	20	1	7 423

Volum (kbm)



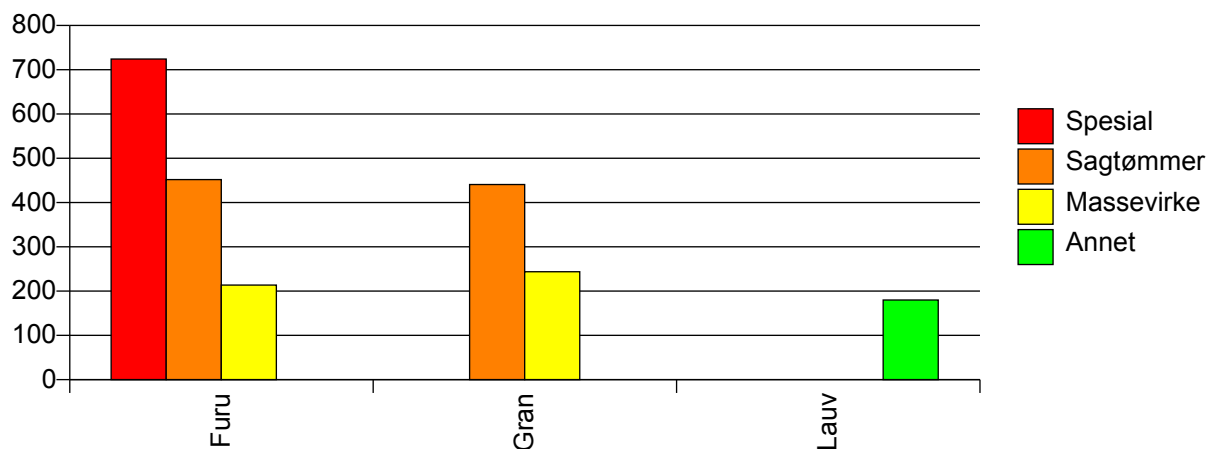
Volum (prosentfordelt)



Gjennomsnittspris 2010 (kr/kbm)

	Spesial	Sagtømmer	Massevirke	Annet	Vrak	Snitt
Furu	724	452	214		0	346
Gran		441	244			337
Lauv				180		180
Snitt	724	442	241	180	0	338

Gjennomsnittspris (kr/kbm)

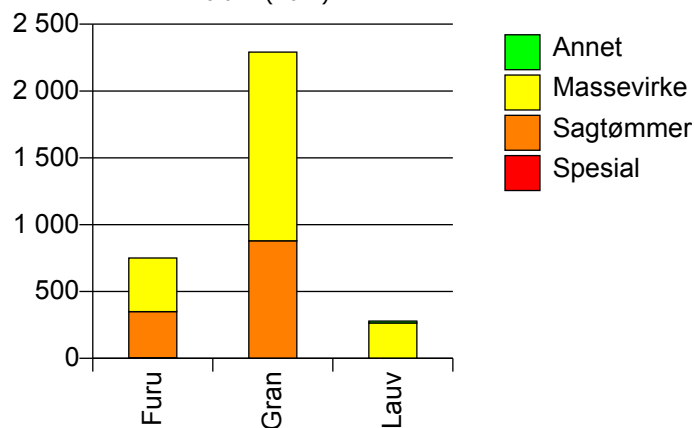


217 OPPEGÅRD

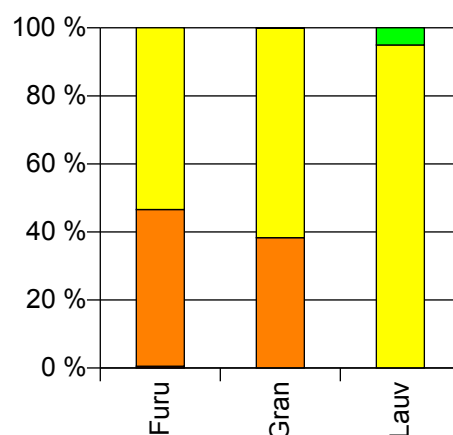
Volum 2010 (kbm)

	Spesial	Sagtømmer	Massevirke	Annet	Vrak	Sum:
Furu	4	346	401			751
Gran		879	1 412		2	2 293
Lauv			265	14		279
Sum:	4	1 225	2 078	14	2	3 323

Volum (kbm)



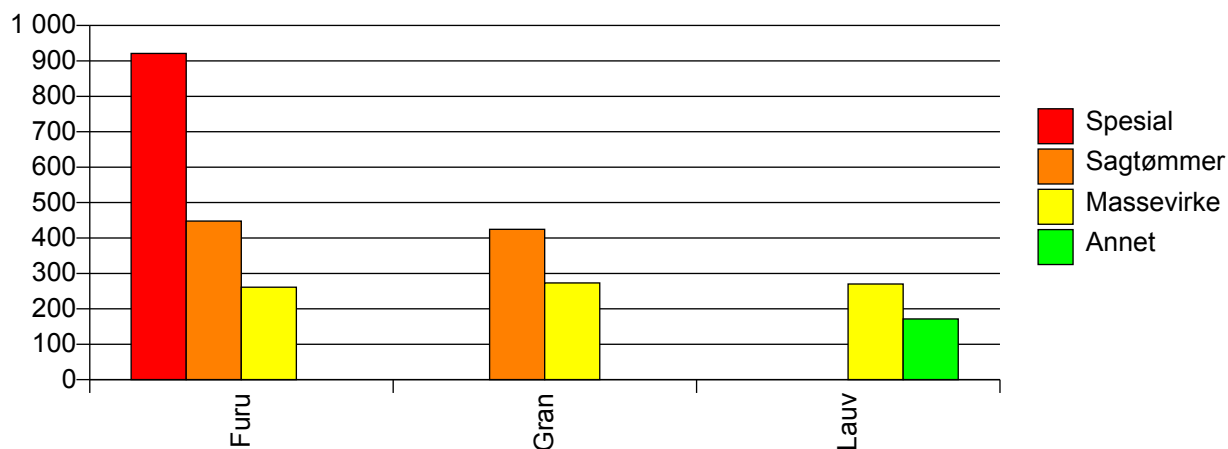
Volum (prosentfordelt)



Gjennomsnittspris 2010 (kr/kbm)

	Spesial	Sagtømmer	Massevirke	Annet	Vrak	Snitt
Furu	921	448	261			351
Gran		425	273		0	331
Lauv			270	171		265
Snitt	921	431	270	171	0	330

Gjennomsnittspris (kr/kbm)

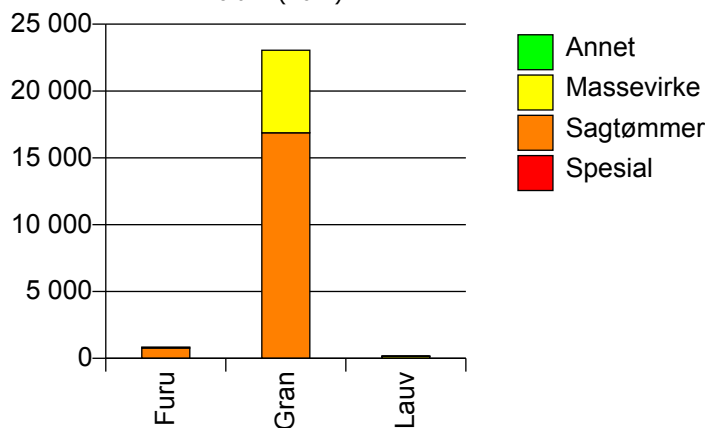


219 BÆRUM

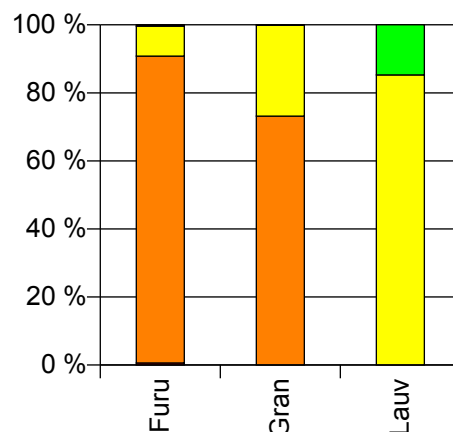
Volum 2010 (kbm)

	Spesial	Sagtømmer	Massevirke	Annet	Vrak	Sum:
Furu	5	764	75		3	847
Gran		16 878	6 172		13	23 063
Lauv			145	25		170
Sum:	5	17 642	6 392	25	16	24 080

Volum (kbm)



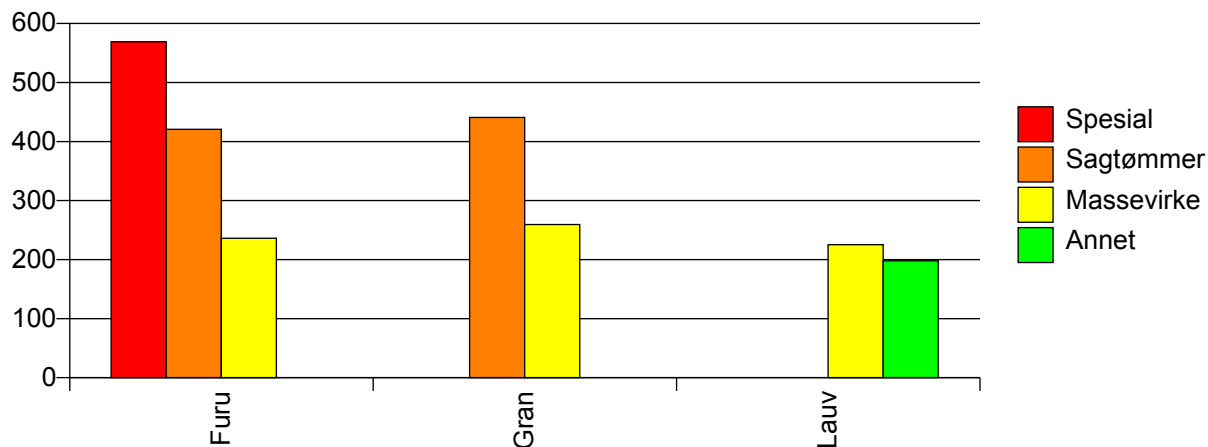
Volum (prosentfordelt)



Gjennomsnittspris 2010 (kr/kbm)

	Spesial	Sagtømmer	Massevirke	Annet	Vrak	Snitt
Furu	569	421	236		0	404
Gran		441	260		0	392
Lauv			225	198		221
Snitt	569	440	258	198	0	391

Gjennomsnittspris (kr/kbm)

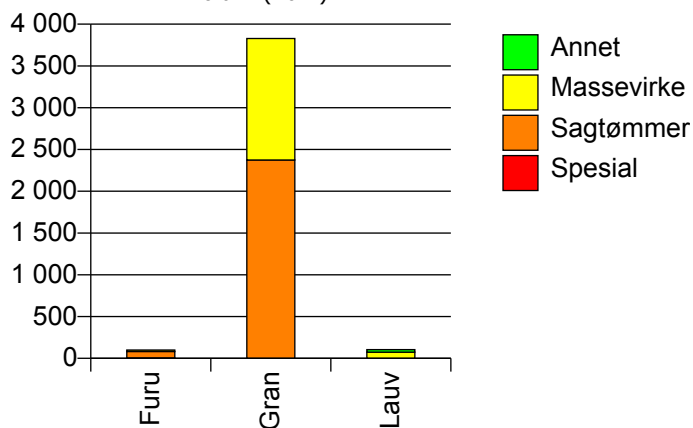


220 ASKER

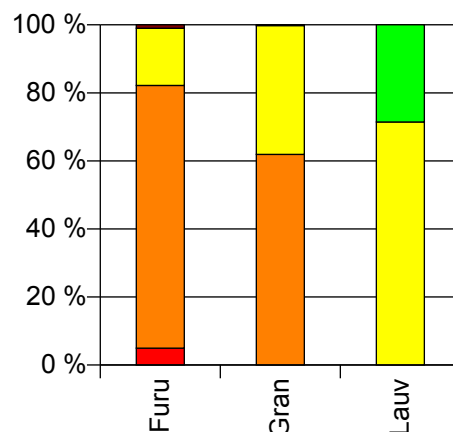
Volum 2010 (kbm)

	Spesial	Sagtømmer	Massevirke	Annet	Vrak	Sum:
Furu	5	78	17		1	101
Gran		2 375	1 454		8	3 837
Lauv			75	30		105
Sum:	5	2 453	1 546	30	9	4 043

Volum (kbm)



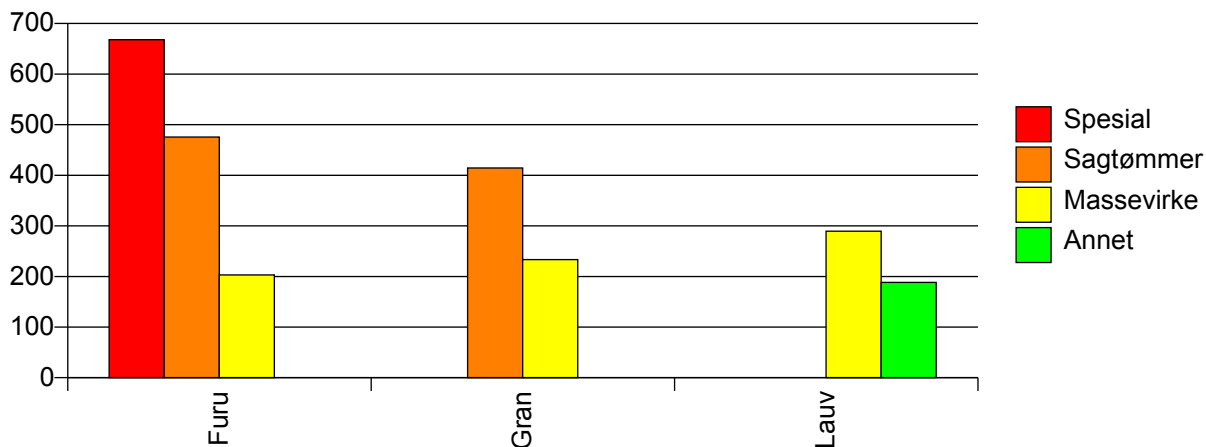
Volum (prosentfordelt)



Gjennomsnittspris 2010 (kr/kbm)

	Spesial	Sagtømmer	Massevirke	Annet	Vrak	Snitt
Furu	668	476	203		0	434
Gran		414	233		0	345
Lauv			289	188		261
Snitt	668	416	236	188	0	345

Gjennomsnittspris (kr/kbm)

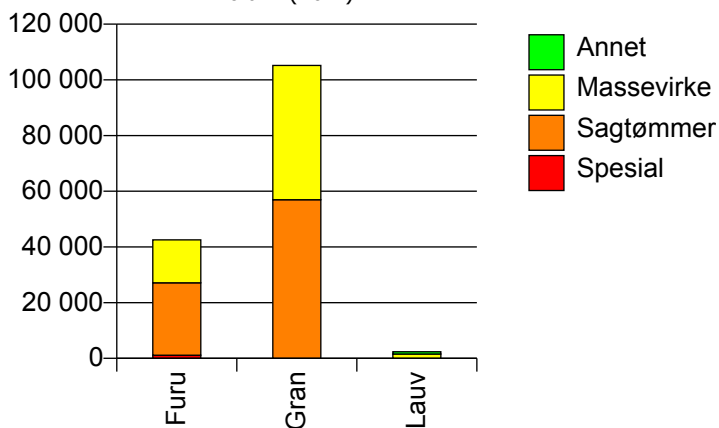


221 AURSKOG-HØLAND

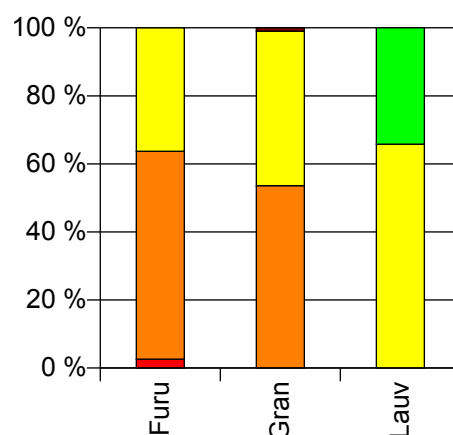
Volum 2010 (kbm)

	Spesial	Sagtømmer	Massevirke	Annet	Vrak	Sum:
Furu	1 107	26 010	15 426		14	42 557
Gran	4	56 938	48 249		1 013	106 204
Lauv			1 574	818		2 392
Sum:	1 111	82 948	65 249	818	1 027	151 153

Volum (kbm)



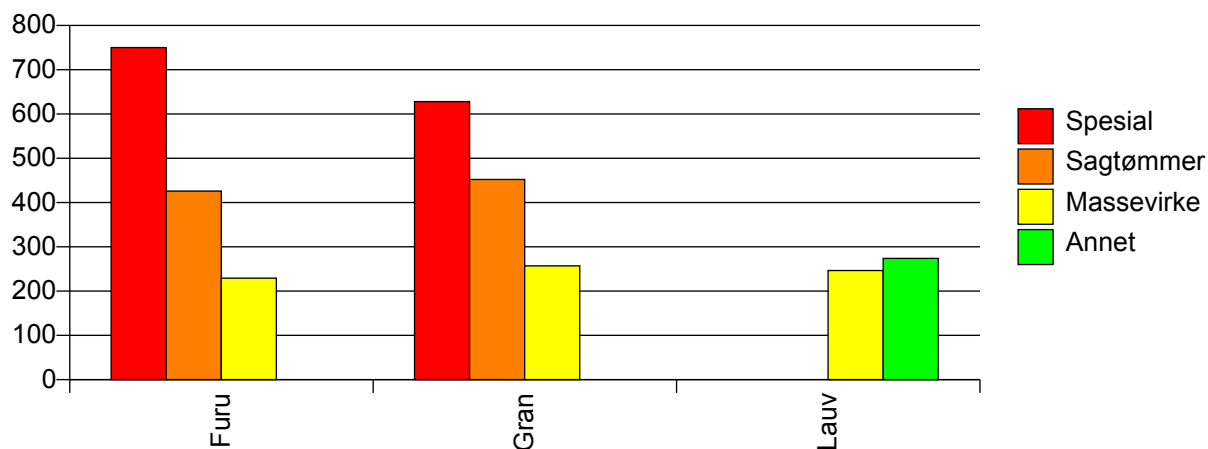
Volum (prosentfordelt)



Gjennomsnittspris 2010 (kr/kbm)

	Spesial	Sagtømmer	Massevirke	Annet	Vrak	Snitt
Furu	750	426	229		0	363
Gran	628	452	257		0	359
Lauv			247	274		256
Snitt	750	444	250	274	0	359

Gjennomsnittspris (kr/kbm)

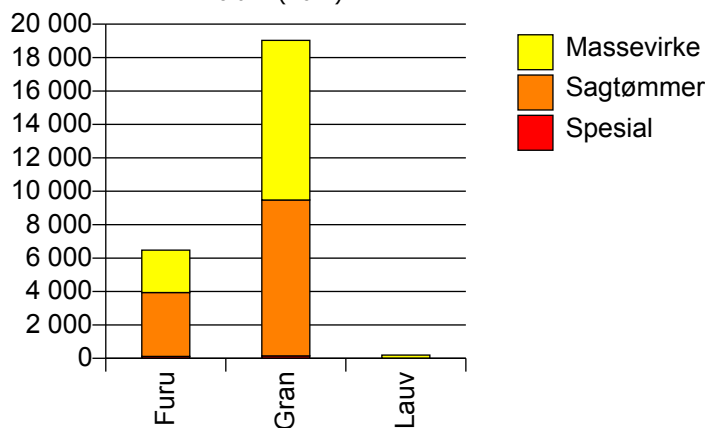


226 SØRUM

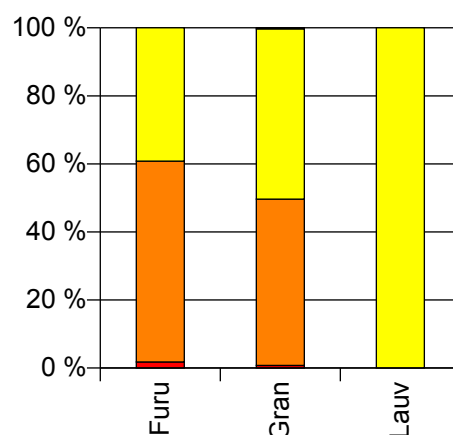
Volum 2010 (kbm)

	Spesial	Sagtømmer	Massevirke	Vrak	Sum:
Furu	115	3 826	2 539	0	6 480
Gran	145	9 331	9 556	58	19 090
Lauv			199		199
Sum:	260	13 157	12 294	58	25 769

Volum (kbm)



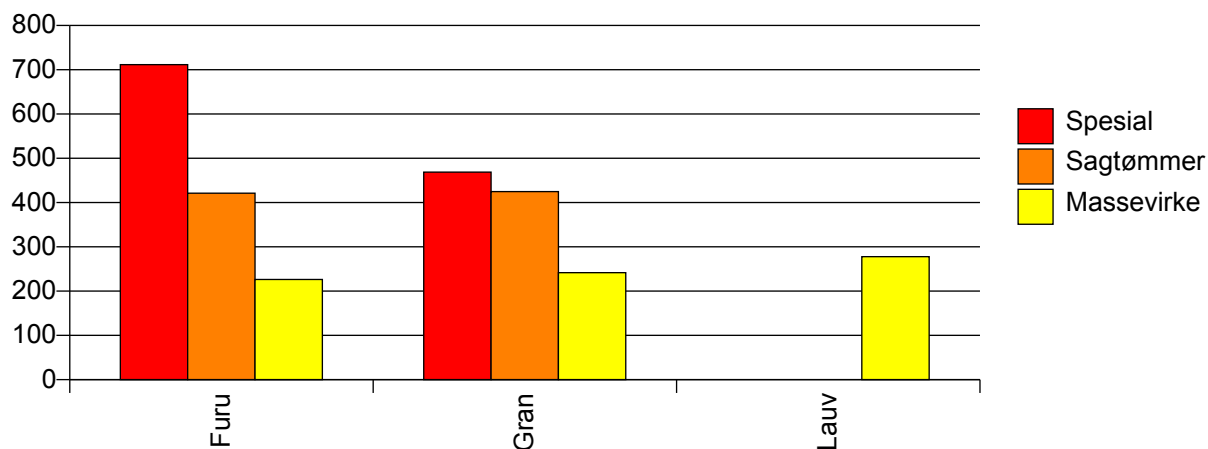
Volum (prosentfordelt)



Gjennomsnittspris 2010 (kr/kbm)

	Spesial	Sagtømmer	Massevirke	Vrak	Snitt
Furu	712	421	226	#DIV/0	350
Gran	469	425	242	0	332
Lauv			278		278
Snitt	576	424	239	0	336

Gjennomsnittspris (kr/kbm)

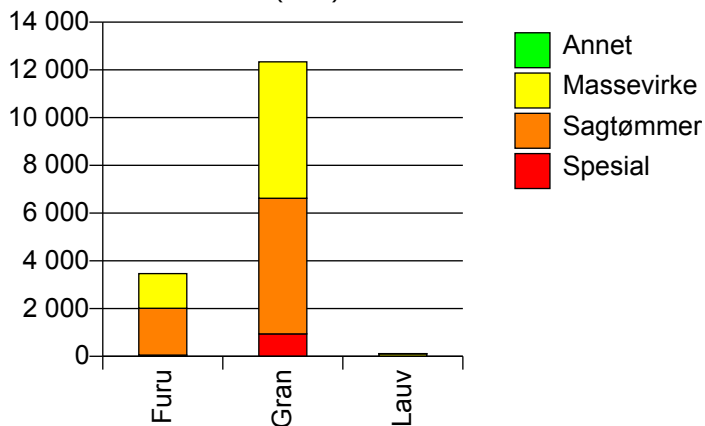


227 FET

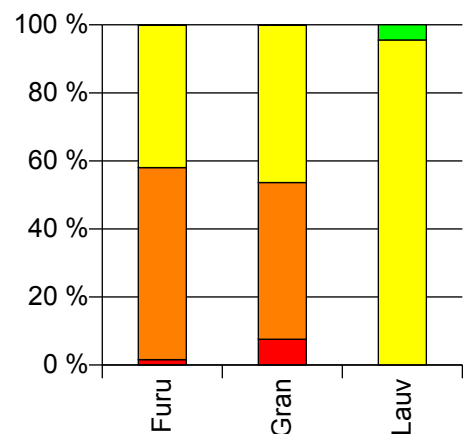
Volum 2010 (kbm)

	Spesial	Sagtømmer	Massevirke	Annet	Vrak	Sum:
Furu	55	1 957	1 453		1	3 466
Gran	939	5 685	5 712		14	12 350
Lauv			107	5		112
Sum:	994	7 642	7 272	5	15	15 928

Volum (kbm)



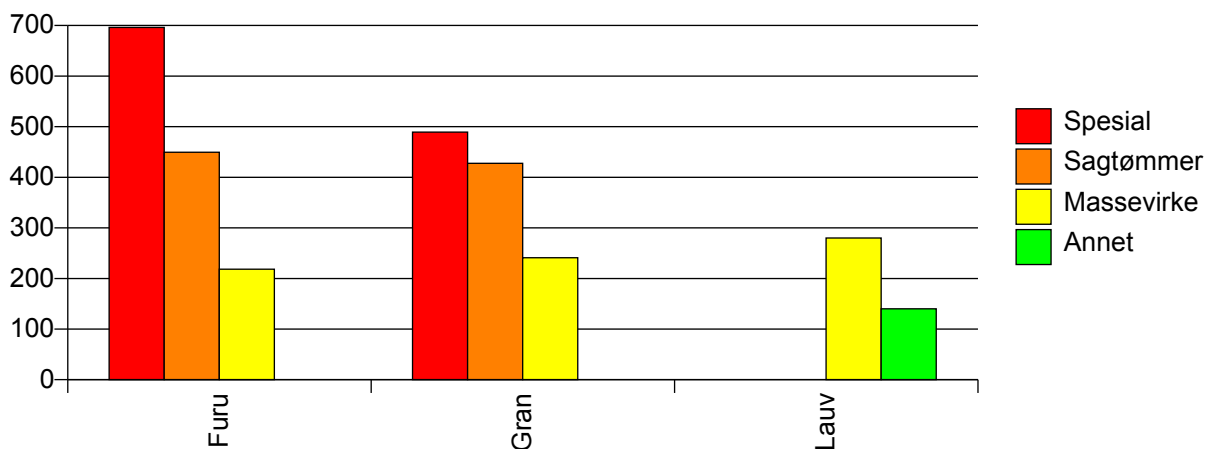
Volum (prosentfordelt)



Gjennomsnittspris 2010 (kr/kbm)

	Spesial	Sagtømmer	Massevirke	Annet	Vrak	Snitt
Furu	696	449	218		0	356
Gran	489	428	241		0	345
Lauv			280	140		274
Snitt	501	433	237	140	0	347

Gjennomsnittspris (kr/kbm)

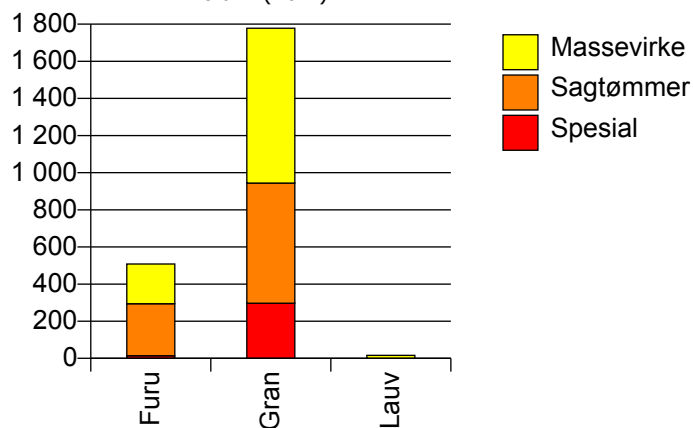


228 RÆLINGEN

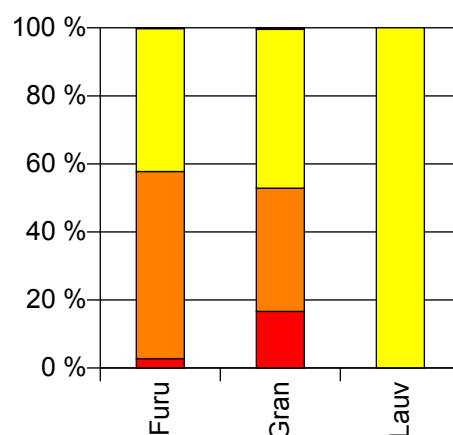
Volum 2010 (kbm)

	Spesial	Sagtømmer	Massevirke	Vrak	Sum:
Furu	14	280	214	1	509
Gran	297	647	834	8	1 786
Lauv			16		16
Sum:	311	927	1 064	9	2 311

Volum (kbm)



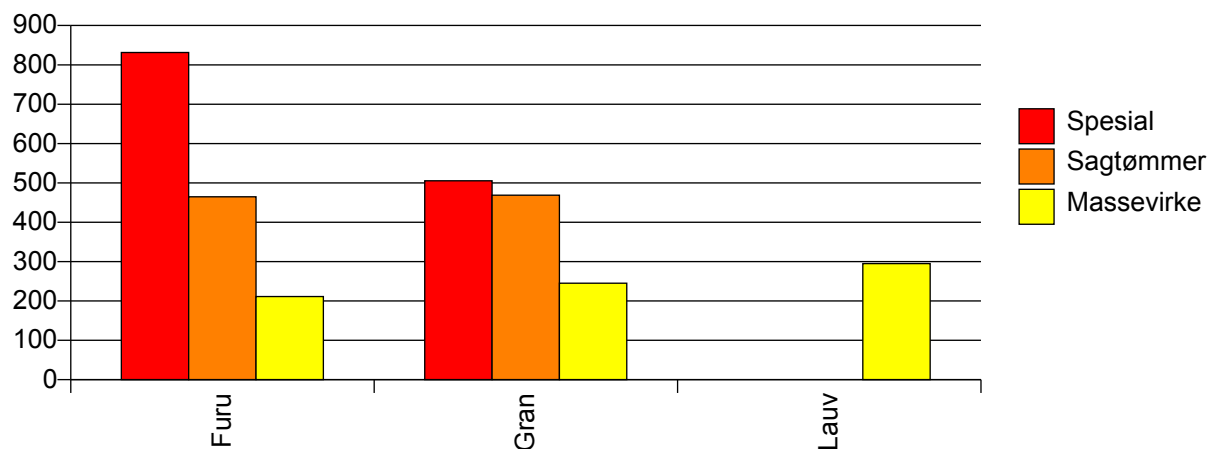
Volum (prosentfordelt)



Gjennomsnittspris 2010 (kr/kbm)

	Spesial	Sagtømmer	Massevirke	Vrak	Snitt
Furu	831	465	211	0	367
Gran	505	469	245	0	368
Lauv			295		295
Snitt	520	467	239	0	368

Gjennomsnittspris (kr/kbm)

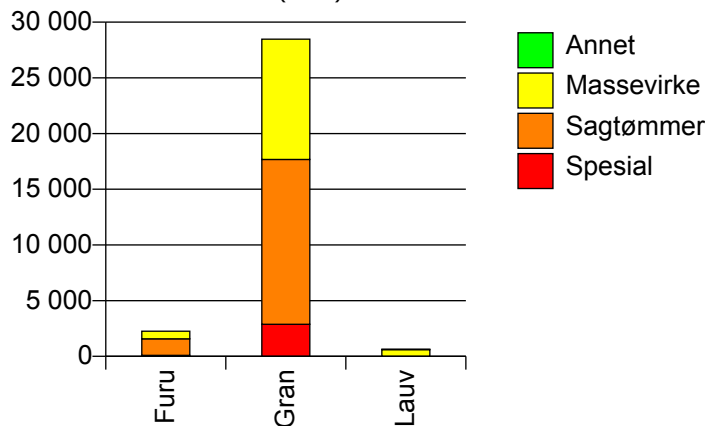


229 ENEBAKK

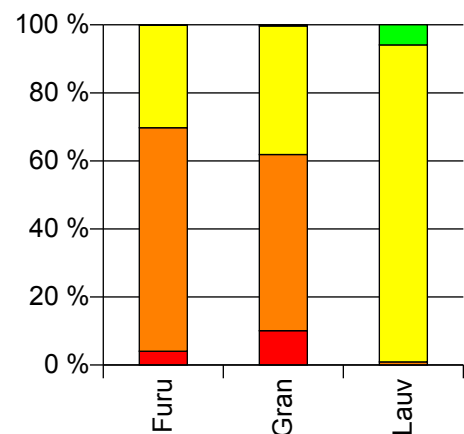
Volum 2010 (kbm)

	Spesial	Sagtømmer	Massevirke	Annet	Vrak	Sum:
Furu	92	1 485	683		1	2 261
Gran	2 884	14 796	10 795		90	28 565
Lauv		6	598	38		642
Sum:	2 976	16 287	12 076	38	91	31 468

Volum (kbm)



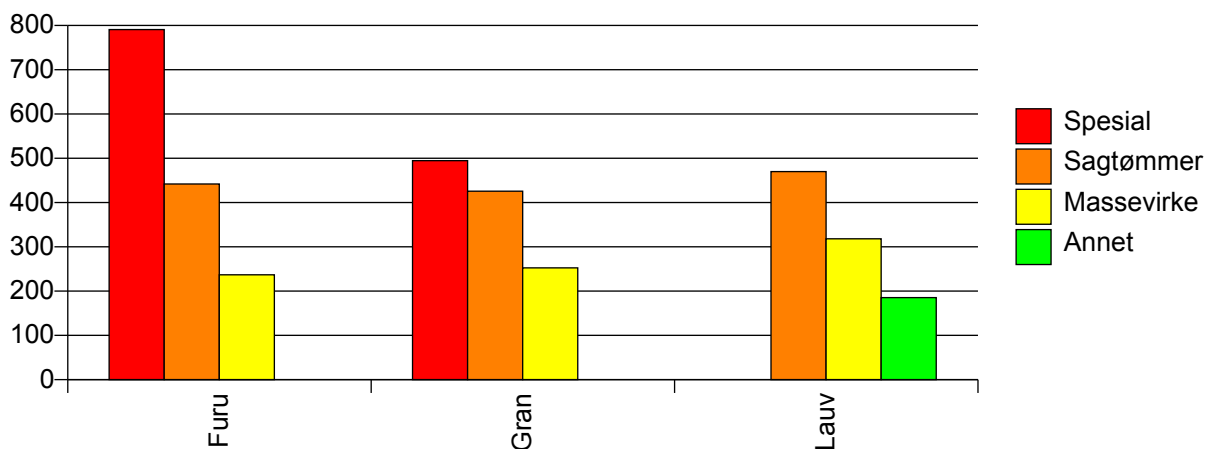
Volum (prosentfordelt)



Gjennomsnittspris 2010 (kr/kbm)

	Spesial	Sagtømmer	Massevirke	Annet	Vrak	Snitt
Furu	791	442	237		0	394
Gran	495	426	253		0	366
Lauv		470	318	185		312
Snitt	504	427	255	185	0	367

Gjennomsnittspris (kr/kbm)

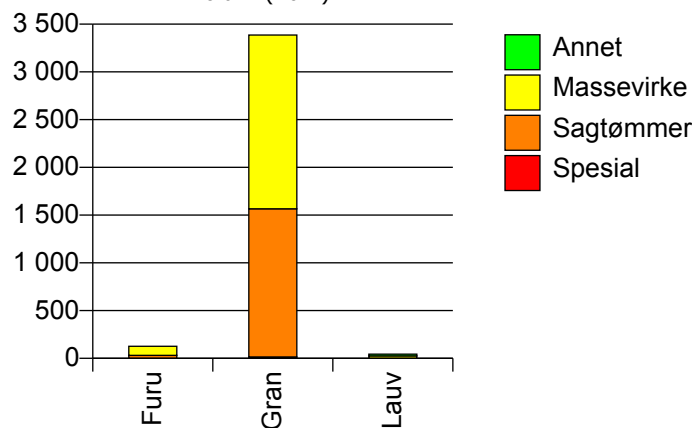


230 LØRENSKOG

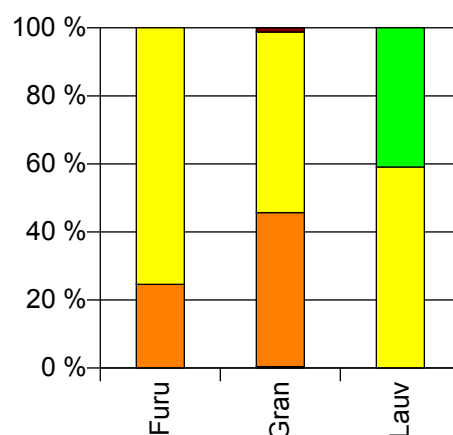
Volum 2010 (kbm)

	Spesial	Sagtømmer	Massevirke	Annet	Vrak	Sum:
Furu		31	95			126
Gran	14	1 552	1 820		42	3 428
Lauv			26	18		44
Sum:	14	1 583	1 941	18	42	3 598

Volum (kbm)



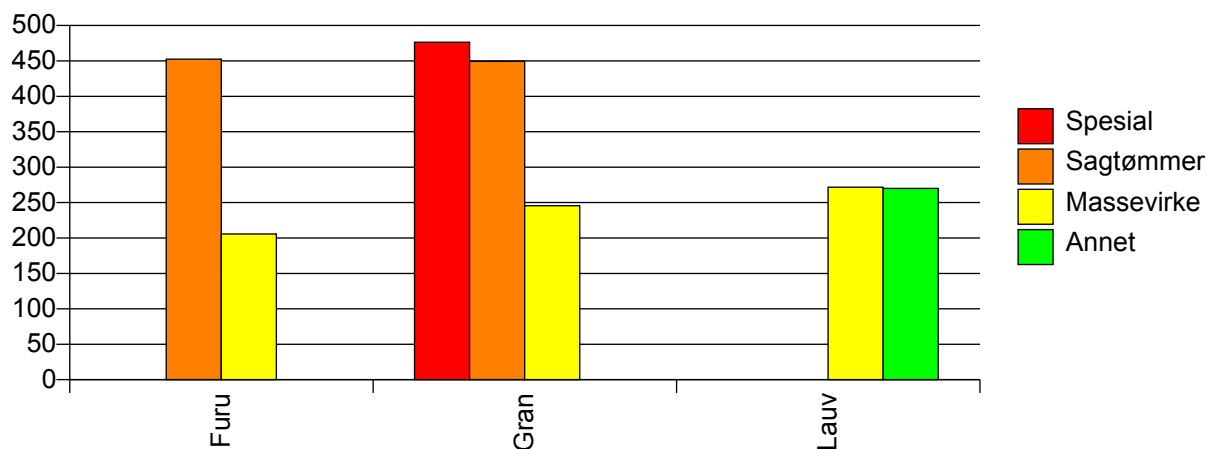
Volum (prosentfordelt)



Gjennomsnittspris 2010 (kr/kbm)

	Spesial	Sagtømmer	Massevirke	Annet	Vrak	Snitt
Furu		452	206			266
Gran	476	449	246		0	336
Lauv			272	270		271
Snitt	476	449	244	270	0	333

Gjennomsnittspris (kr/kbm)

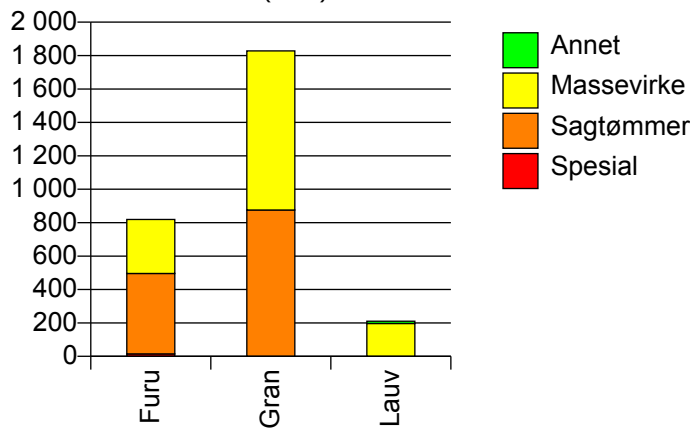


231 SKEDSMO

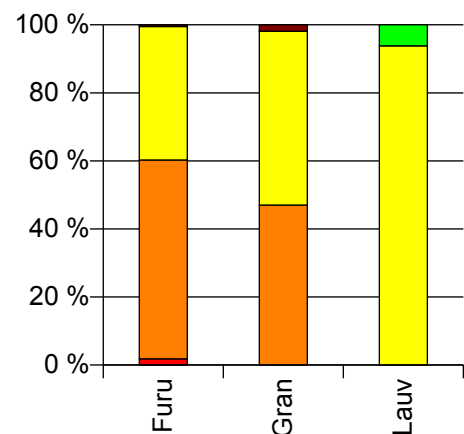
Volum 2010 (kbm)

	Spesial	Sagtømmer	Massevirke	Annet	Vrak	Sum:
Furu	15	481	323		4	823
Gran		876	952		35	1 863
Lauv			197	13		210
Sum:	15	1 357	1 472	13	39	2 896

Volum (kbm)



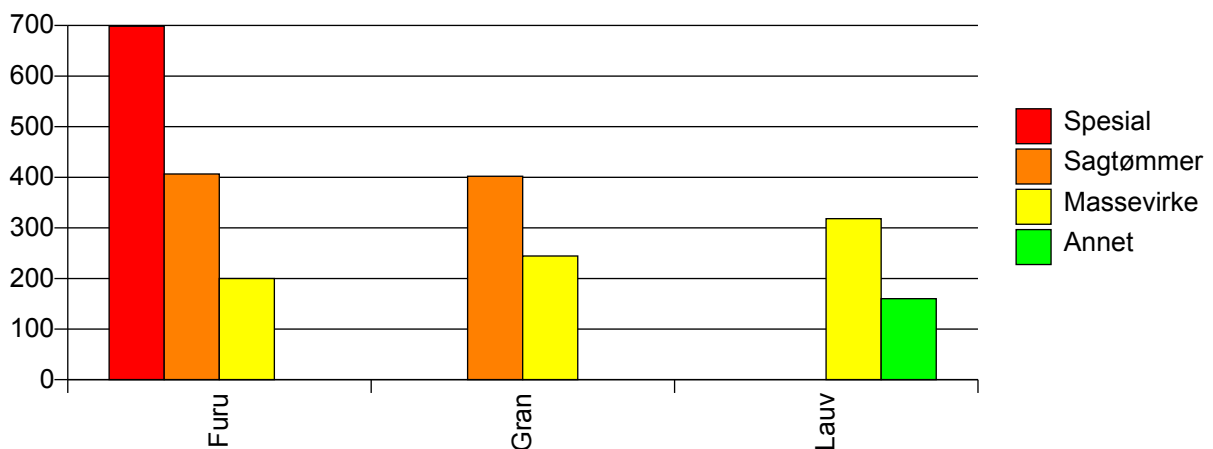
Volum (prosentfordelt)



Gjennomsnittspris 2010 (kr/kbm)

	Spesial	Sagtømmer	Massevirke	Annet	Vrak	Snitt
Furu	699	406	200		0	329
Gran		402	245		0	314
Lauv			318	160		308
Snitt	699	404	245	160	0	318

Gjennomsnittspris (kr/kbm)

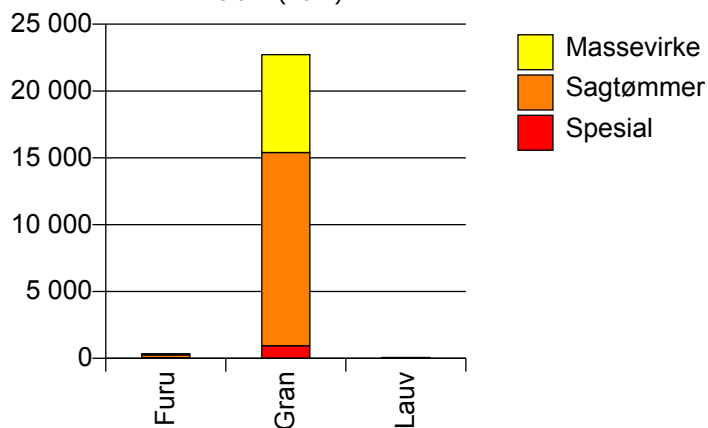


233 NITTEDAL

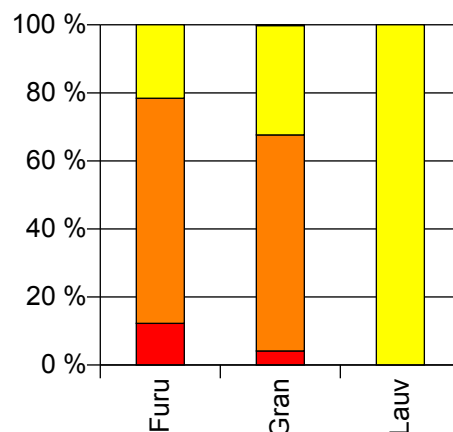
Volum 2010 (kbm)

	Spesial	Sagtømmer	Massevirke	Vrak	Sum:
Furu	42	227	74	0	343
Gran	943	14 455	7 320	45	22 763
Lauv			69		69
Sum:	985	14 682	7 463	45	23 175

Volum (kbm)



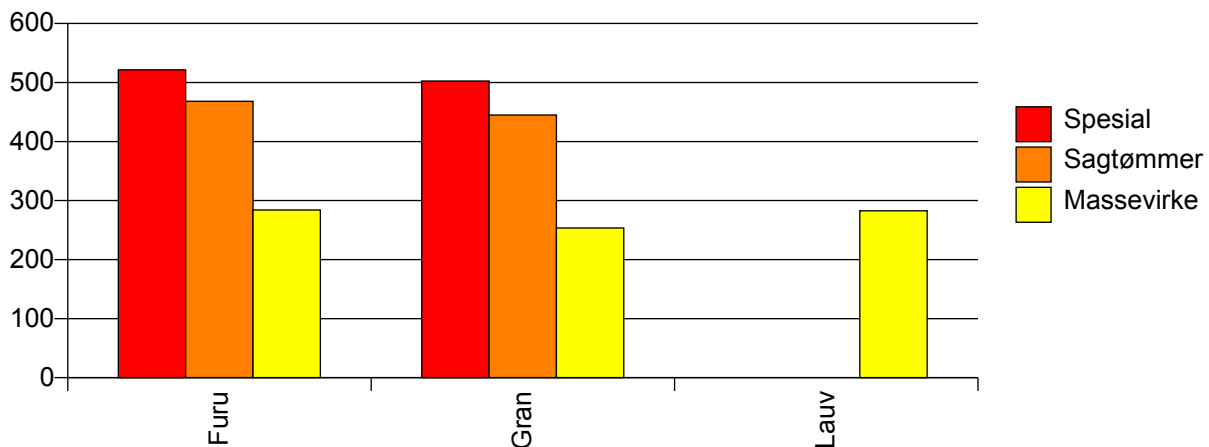
Volum (prosentfordelt)



Gjennomsnittspris 2010 (kr/kbm)

	Spesial	Sagtømmer	Massevirke	Vrak	Snitt
Furu	522	468	284	#DIV/0	435
Gran	503	445	253	0	385
Lauv			283		283
Snitt	503	445	254	0	385

Gjennomsnittspris (kr/kbm)

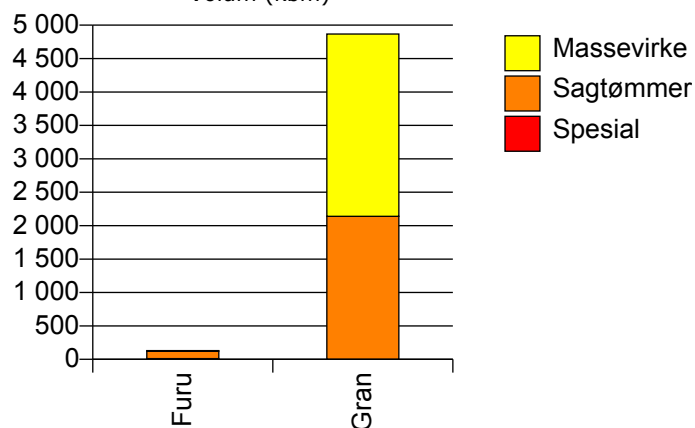


234 GJERDRUM

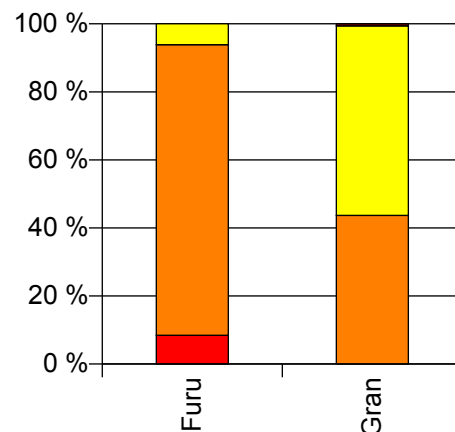
Volum 2010 (kbm)

	Spesial	Sagtømmer	Massevirke	Vrak	Sum:
Furu	11	111	8		130
Gran		2 140	2 728	30	4 898
Sum:	11	2 251	2 736	30	5 028

Volum (kbm)



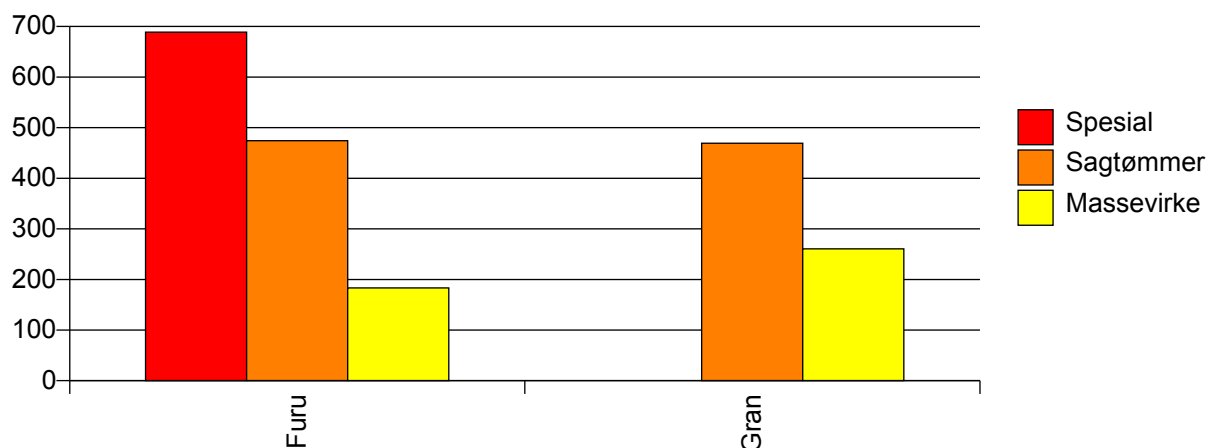
Volum (prosentfordelt)



Gjennomsnittspris 2010 (kr/kbm)

	Spesial	Sagtømmer	Massevirke	Vrak	Snitt
Furu	689	474	183		475
Gran		469	261	0	350
Snitt	689	469	260	0	353

Gjennomsnittspris (kr/kbm)

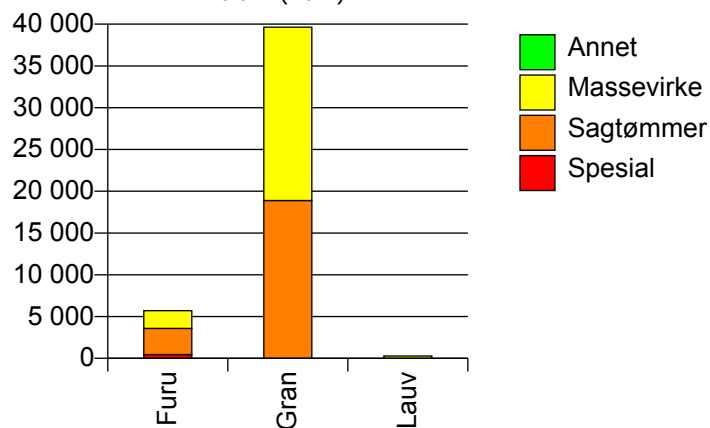


235 ULLENSAKER

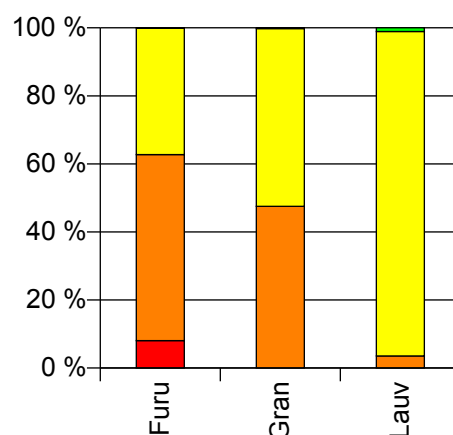
Volum 2010 (kbm)

	Spesial	Sagtømmer	Massevirke	Annet	Vrak	Sum:
Furu	460	3 116	2 123		1	5 700
Gran		18 886	20 759		78	39 723
Lauv		10	269	3		282
Sum:	460	22 012	23 151	3	79	45 705

Volum (kbm)



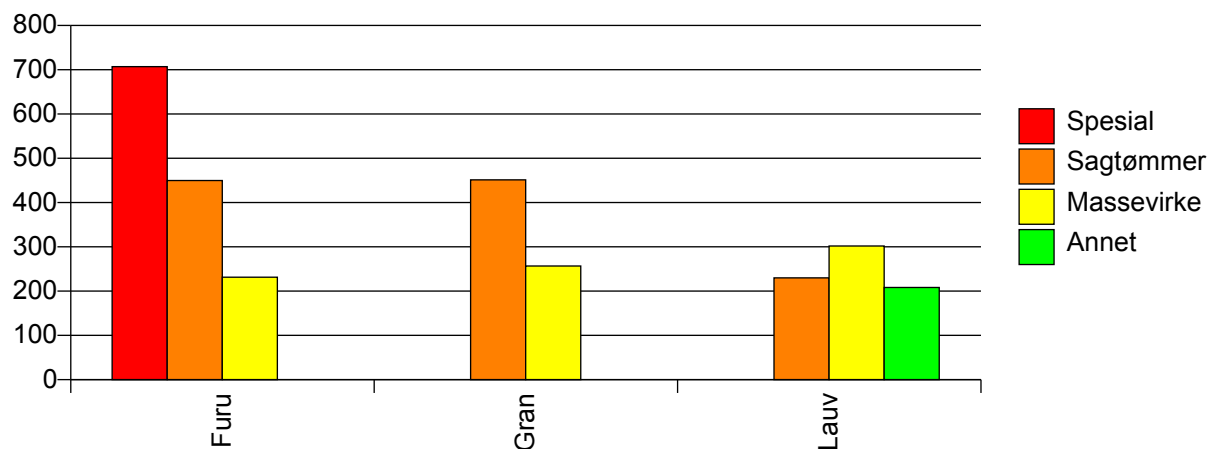
Volum (prosentfordelt)



Gjennomsnittspris 2010 (kr/kbm)

	Spesial	Sagtømmer	Massevirke	Annet	Vrak	Snitt
Furu	707	450	232		0	389
Gran		451	257		0	349
Lauv		230	302	208		299
Snitt	707	451	255	208	0	353

Gjennomsnittspris (kr/kbm)

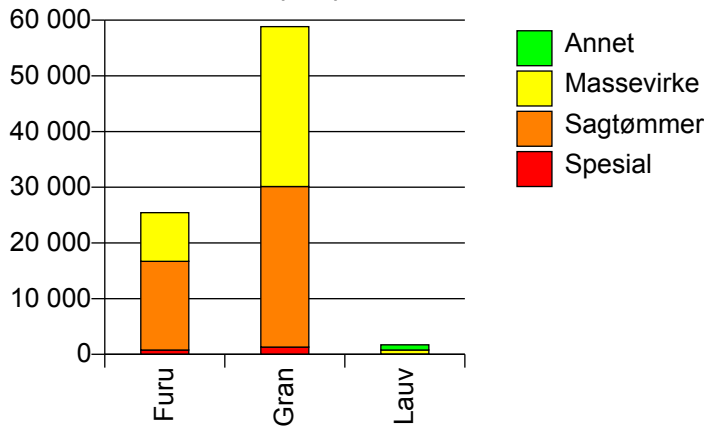


236 NES

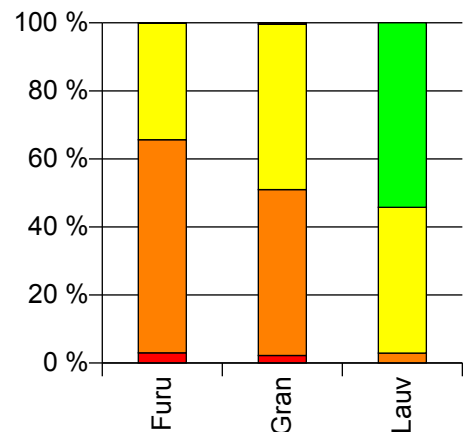
Volum 2010 (kbm)

	Spesial	Sagtømmer	Massevirke	Annet	Vrak	Sum:
Furu	768	15 941	8 733	8	1	25 451
Gran	1 304	28 823	28 720		252	59 099
Lauv		50	735	930		1 715
Sum:	2 072	44 814	38 188	938	253	86 265

Volum (kbm)



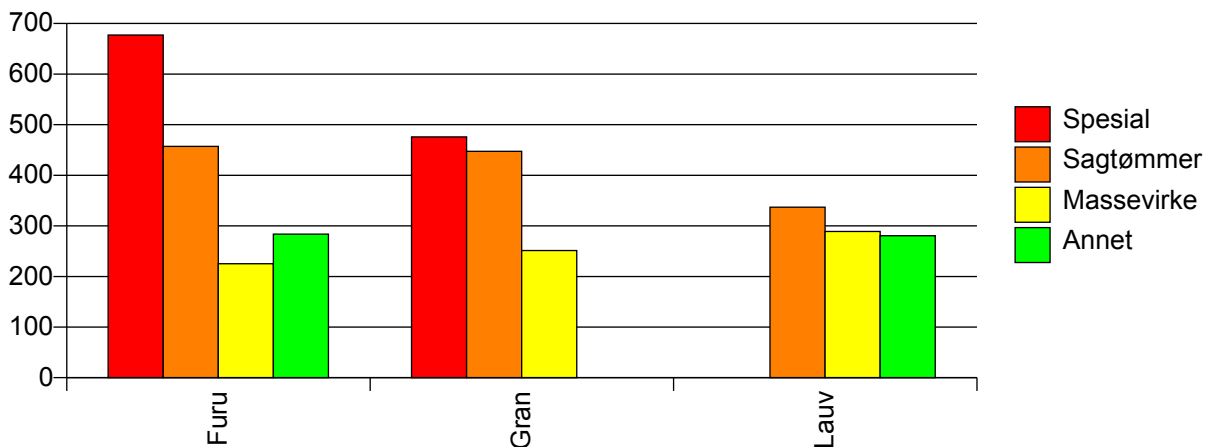
Volum (prosentfordelt)



Gjennomsnittspris 2010 (kr/kbm)

	Spesial	Sagtømmer	Massevirke	Annet	Vrak	Snitt
Furu	677	457	225	284	0	384
Gran	476	447	251		0	351
Lauv		337	289	280		286
Snitt	551	451	246	280	0	359

Gjennomsnittspris (kr/kbm)

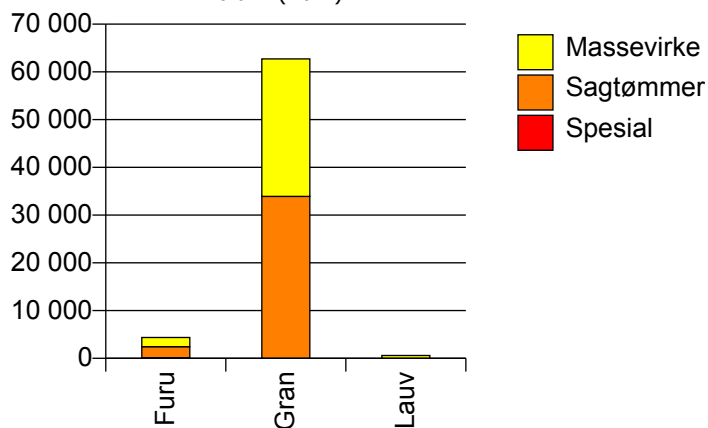


237 EIDSVOLL

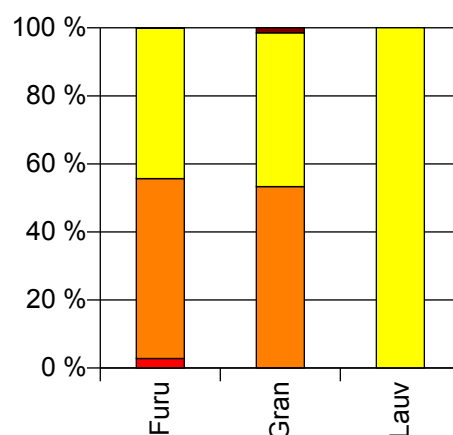
Volum 2010 (kbm)

	Spesial	Sagtømmer	Massevirke	Vrak	Sum:
Furu	123	2 310	1 933	3	4 369
Gran		33 934	28 777	938	63 649
Lauv			604		604
Sum:	123	36 244	31 314	941	68 622

Volum (kbm)



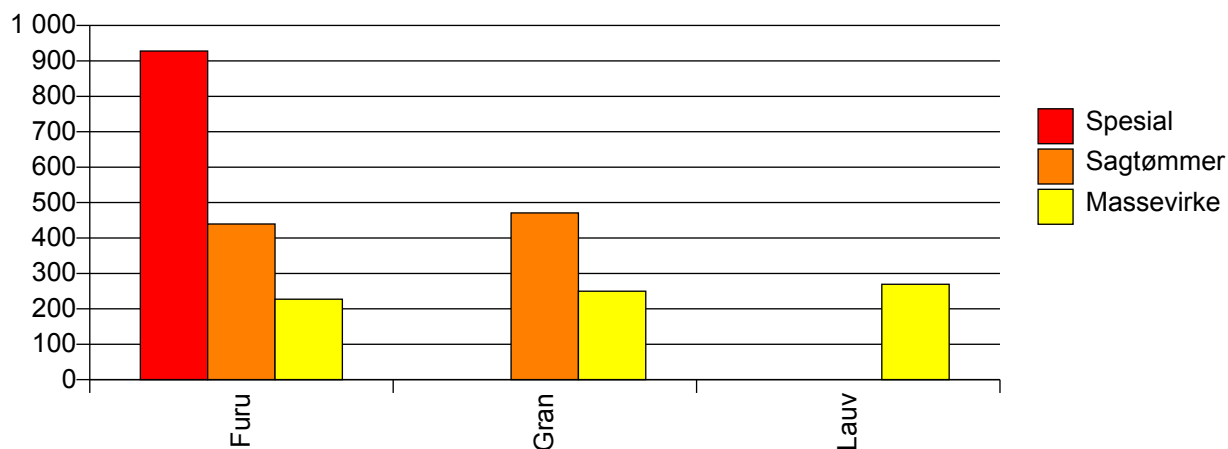
Volum (prosentfordelt)



Gjennomsnittspris 2010 (kr/kbm)

	Spesial	Sagtømmer	Massevirke	Vrak	Snitt
Furu	928	440	227	0	359
Gran		471	250	0	364
Lauv			269		269
Snitt	928	469	249	0	363

Gjennomsnittspris (kr/kbm)

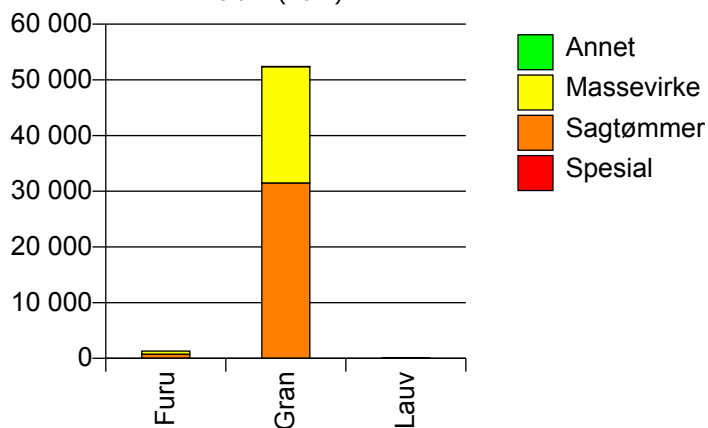


238 NANNESTAD

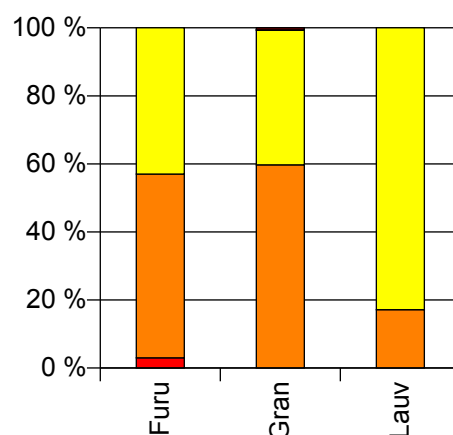
Volum 2010 (kbm)

	Spesial	Sagtømmer	Massevirke	Annet	Vrak	Sum:
Furu	39	707	562		0	1 308
Gran		31 490	20 892	22	321	52 725
Lauv		12	58			70
Sum:	39	32 209	21 512	22	321	54 103

Volum (kbm)



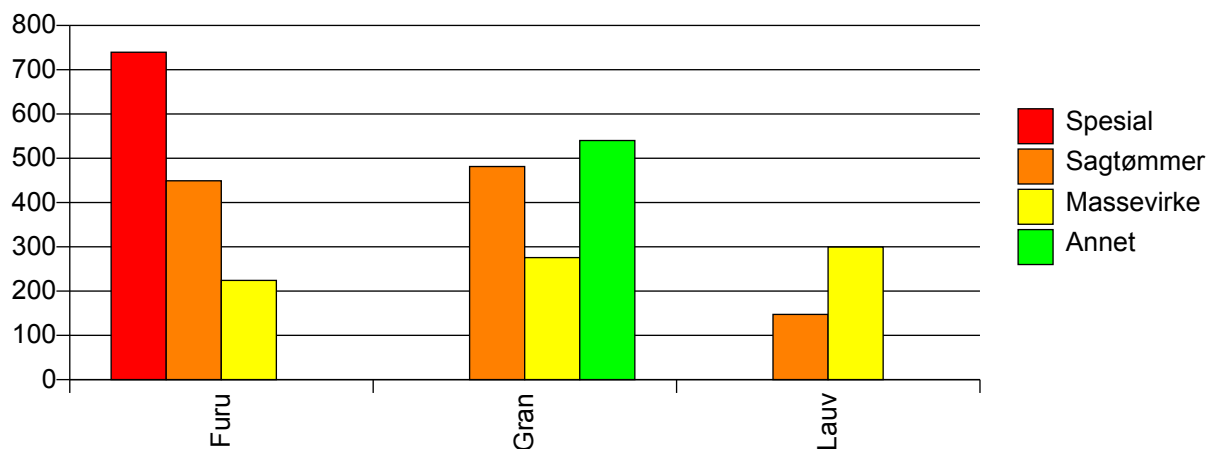
Volum (prosentfordelt)



Gjennomsnittspris 2010 (kr/kbm)

	Spesial	Sagtømmer	Massevirke	Annet	Vrak	Snitt
Furu	740	449	224		#DIV/0	361
Gran		481	276	540	0	397
Lauv		148	300			274
Snitt	740	481	275	540	0	396

Gjennomsnittspris (kr/kbm)

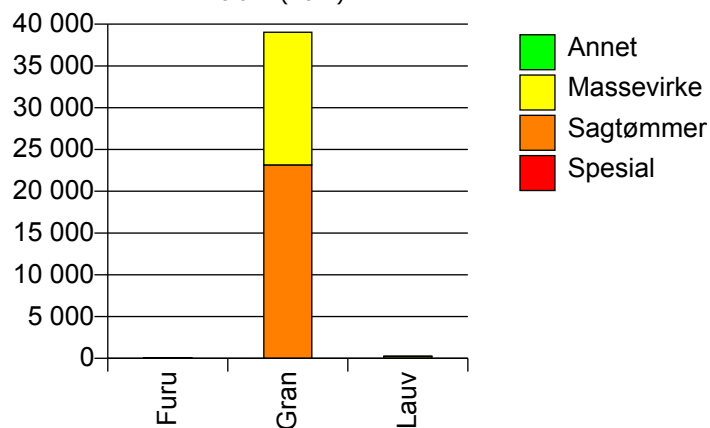


239 HURDAL

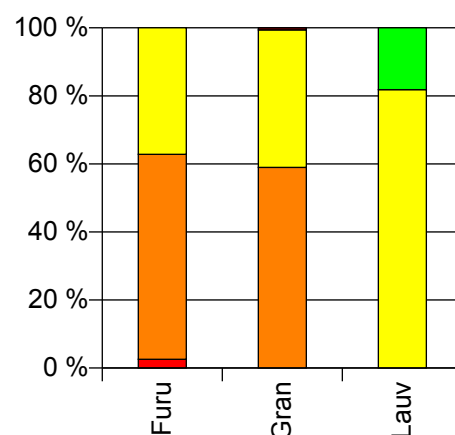
Volum 2010 (kbm)

	Spesial	Sagtømmer	Massevirke	Annet	Vrak	Sum:
Furu	2	47	29		0	78
Gran		23 158	15 874		239	39 271
Lauv			216	48		264
Sum:	2	23 205	16 119	48	239	39 613

Volum (kbm)



Volum (prosentfordelt)



Gjennomsnittspris 2010 (kr/kbm)

	Spesial	Sagtømmer	Massevirke	Annet	Vrak	Snitt
Furu	821	445	225		#DIV/0	373
Gran		466	253		0	377
Lauv			302	196		283
Snitt	821	466	253	196	0	376

Gjennomsnittspris (kr/kbm)

