

Virkestatistikk fra

SKOG-DATA AS

Østfold m/kommuner

Dataene i rapporten er hentet fra databasen som inneholder virkesdata med tilhørende innbetalinger av skogavgift. Rapporten er laget med Business Objects, som er sluttbrukerverktøyet i Skog-Data sine nye datavarehus-løsninger. Business Objects er ett meget sterkt rapportverktøy som kan presentere store mengder data effektivt.

Rapportene kan lastes ned fra www.skogdata.no/statistikk

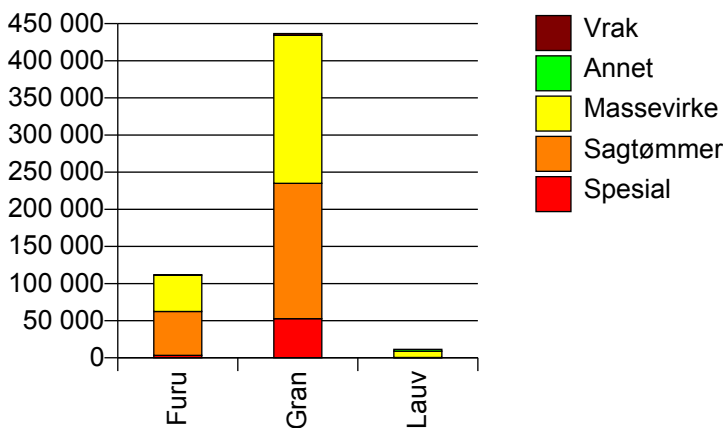
For mer informasjon, kontakt: tabh@skogdata.no

Østfold

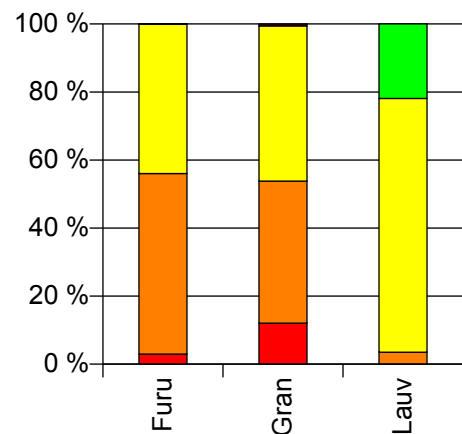
Volum 2010

	Spesial	Sagtømmer	Massevirke	Annet	Vrak	Sum:
Furu	3 318	59 170	49 012		50	111 550
Gran	52 715	182 177	199 337		2 443	436 672
Lauv		397	8 460	2 485		11 342
Sum:	56 033	241 744	256 809	2 485	2 493	559 564

Volum (kbm)



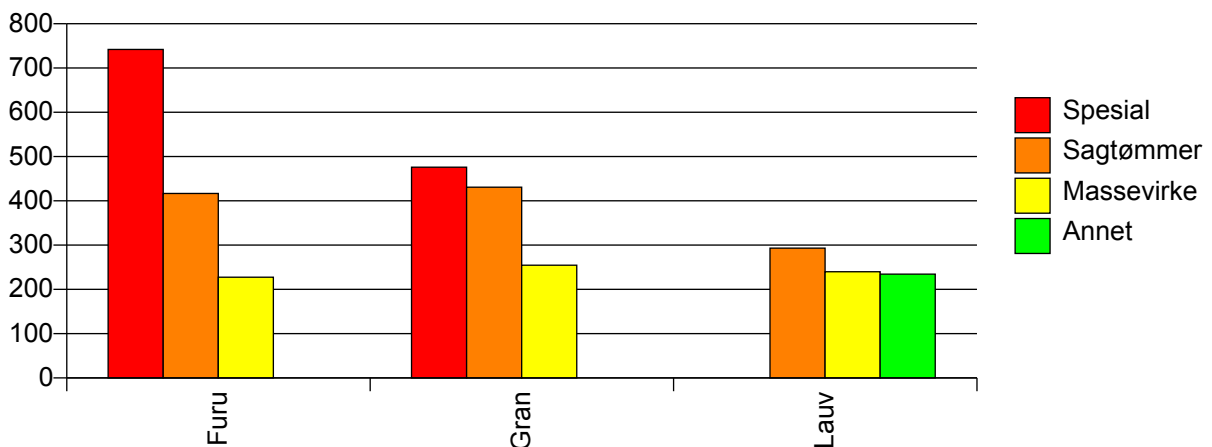
Volum (prosentfordelt)



Gjennomsnittspris 2010 (kr/kbm)

	Spesial	Sagtømmer	Massevirke	Annet	Vrak	Snitt:
Furu	742	417	228		51	343
Gran	476	431	255		0	354
Lauv		293	240	234		241
Snitt:	492	427	249	234	1	349

Gjennomsnittspris (kr/kbm)

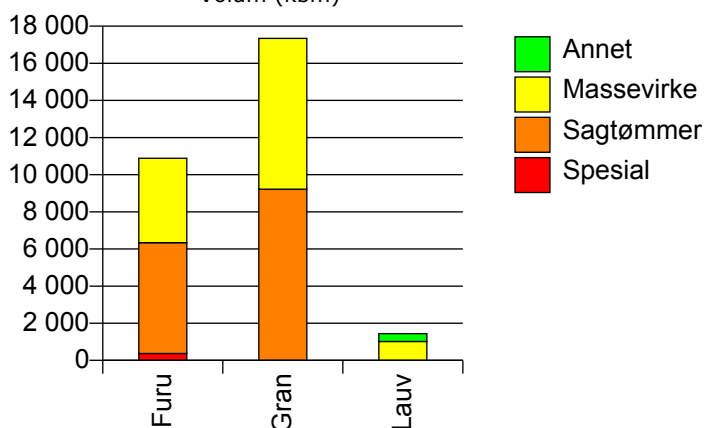


121 RØMSKOG

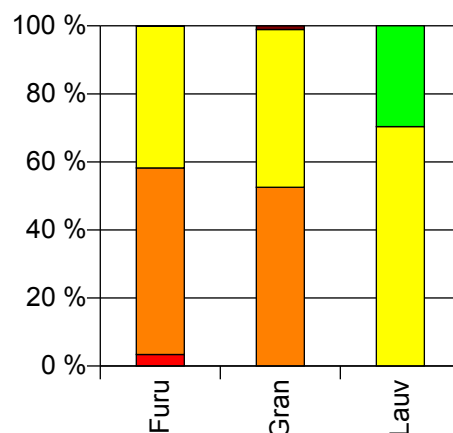
Volum 2010 (kbm)

	Spesial	Sagtømmer	Massevirke	Annet	Vrak	Sum:
Furu	369	5 970	4 548		1	10 888
Gran		9 217	8 128		189	17 534
Lauv			1 013	426		1 439
Sum:	369	15 187	13 689	426	190	29 861

Volum (kbm)



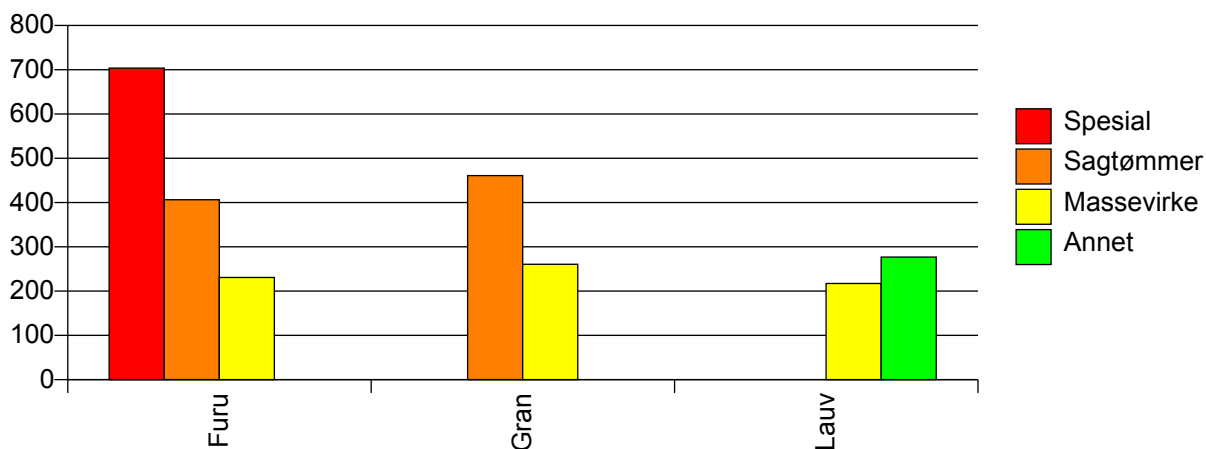
Volum (prosentfordelt)



Gjennomsnittspris 2010 (kr/kbm)

	Spesial	Sagtømmer	Massevirke	Annet	Vrak	Snitt
Furu	704	407	231		0	343
Gran		461	261		0	363
Lauv			217	277		235
Snitt	704	440	248	277	0	350

Gjennomsnittspris (kr/kbm)

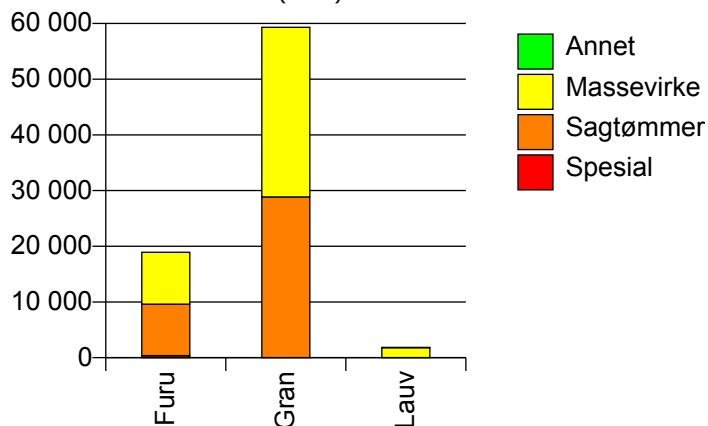


101 HALDEN

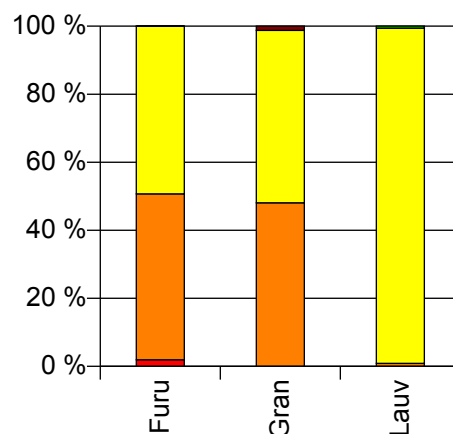
Volum 2010 (kbm)

	Spesial	Sagtømmer	Massevirke	Annet	Vrak	Sum:
Furu	366	9 236	9 325		6	18 933
Gran		28 874	30 434		734	60 042
Lauv		16	1 795	10		1 821
Sum:	366	38 126	41 554	10	740	80 796

Volum (kbm)



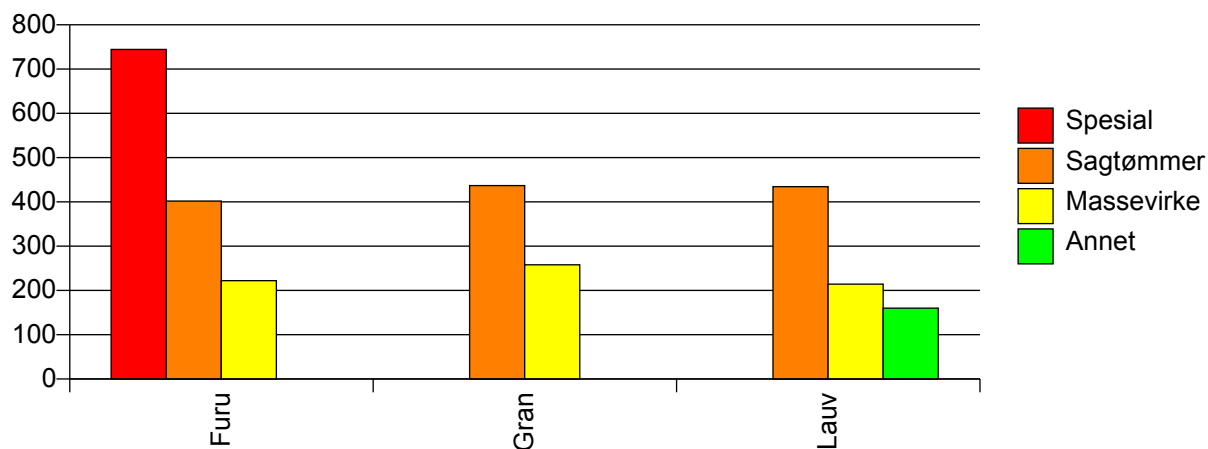
Volum (prosentfordelt)



Gjennomsnittspris 2010 (kr/kbm)

	Spesial	Sagtømmer	Massevirke	Annet	Vrak	Snitt
Furu	745	402	222		0	320
Gran		437	258		0	341
Lauv		435	214	160		216
Snitt	745	428	248	160	0	333

Gjennomsnittspris (kr/kbm)

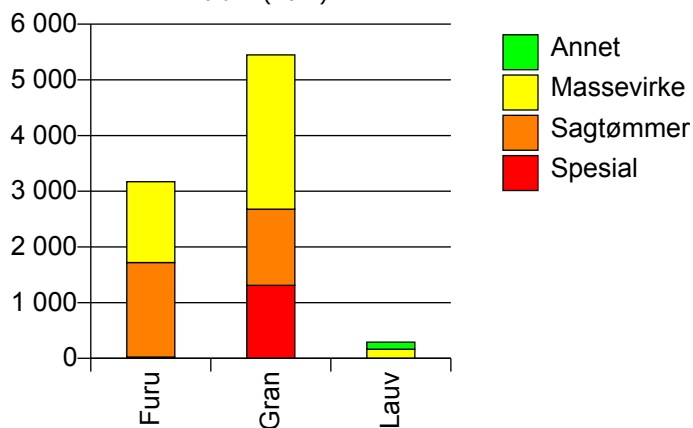


104 MOSS

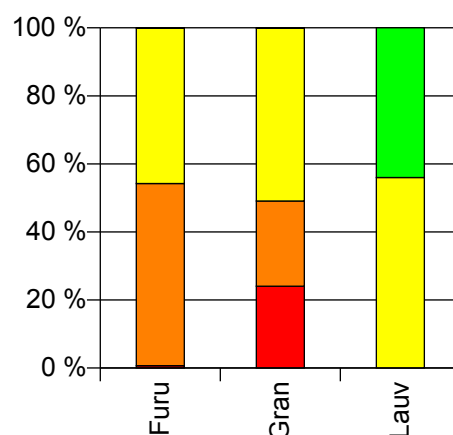
Volum 2010 (kbm)

	Spesial	Sagtømmer	Massevirke	Annet	Vrak	Sum:
Furu	22	1 699	1 450		3	3 174
Gran	1 312	1 367	2 770		8	5 457
Lauv			163	128		291
Sum:	1 334	3 066	4 383	128	11	8 922

Volum (kbm)



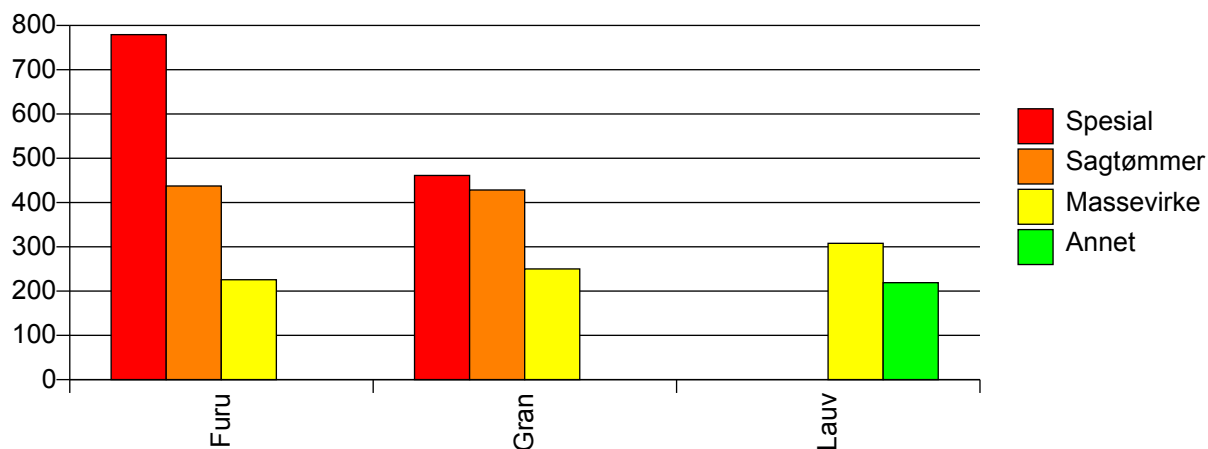
Volum (prosentfordelt)



Gjennomsnittspris 2010 (kr/kbm)

	Spesial	Sagtømmer	Massevirke	Annet	Vrak	Snitt
Furu	779	438	226		0	343
Gran	461	428	250		0	345
Lauv			308	219		269
Snitt	467	433	244	219	0	342

Gjennomsnittspris (kr/kbm)

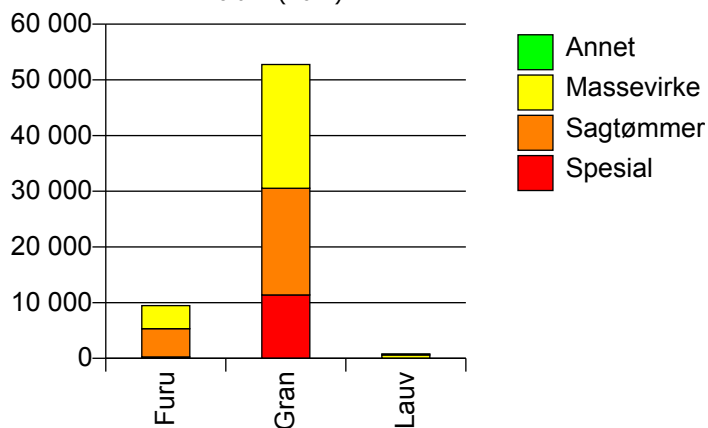


105 SARPSBORG

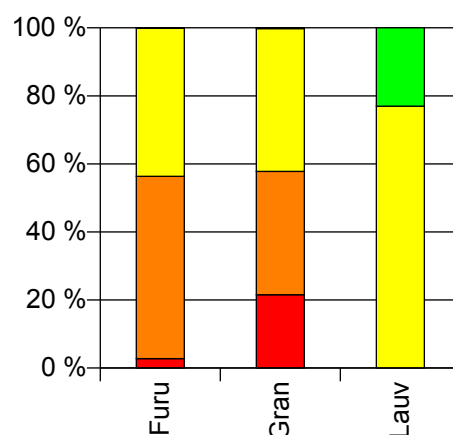
Volum 2010 (kbm)

	Spesial	Sagtømmer	Massevirke	Annet	Vrak	Sum:
Furu	261	5 076	4 128		5	9 470
Gran	11 379	19 170	22 207		107	52 863
Lauv			612	183		795
Sum:	11 640	24 246	26 947	183	112	63 128

Volum (kbm)



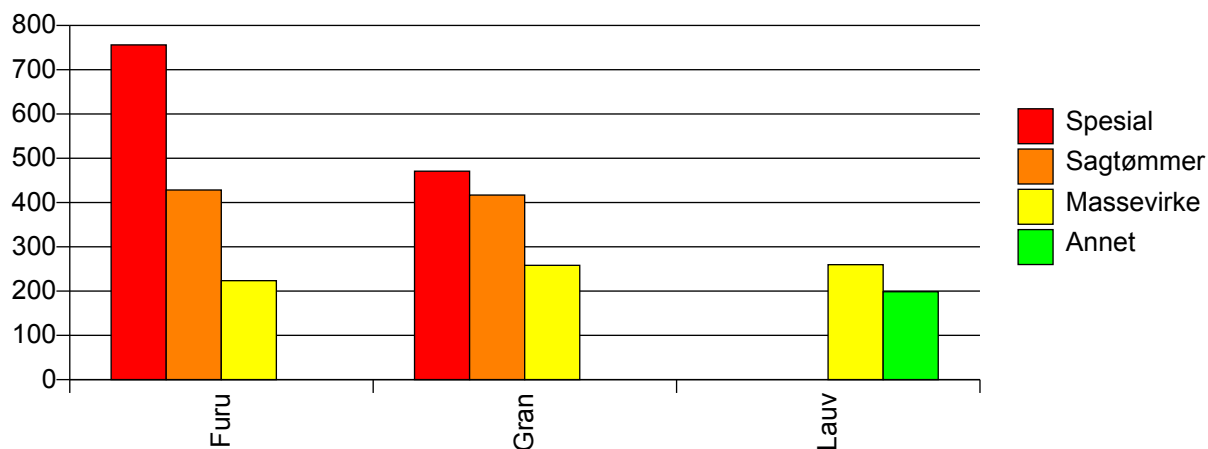
Volum (prosentfordelt)



Gjennomsnittspris 2010 (kr/kbm)

	Spesial	Sagtømmer	Massevirke	Annet	Vrak	Snitt
Furu	756	428	224		0	348
Gran	471	417	258		0	361
Lauv			260	198		246
Snitt	477	420	253	198	0	358

Gjennomsnittspris (kr/kbm)

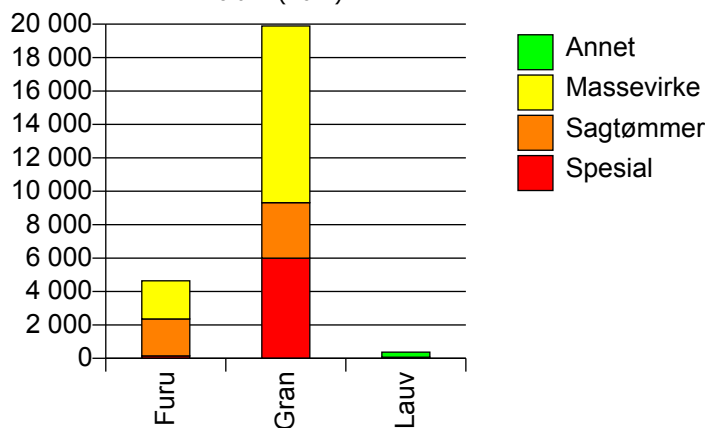


106 FREDRIKSTAD

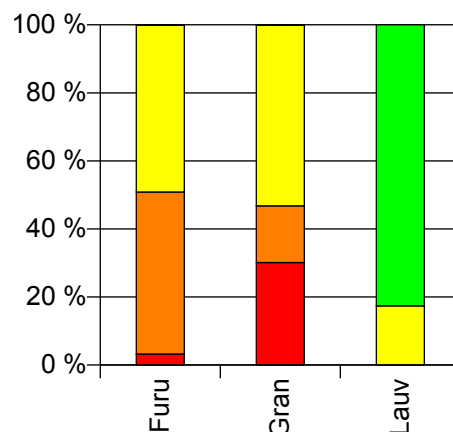
Volum 2010 (kbm)

	Spesial	Sagtømmer	Massevirke	Annet	Vrak	Sum:
Furu	150	2 211	2 281		1	4 643
Gran	5 999	3 320	10 577		23	19 919
Lauv			64	304		368
Sum:	6 149	5 531	12 922	304	24	24 930

Volum (kbm)



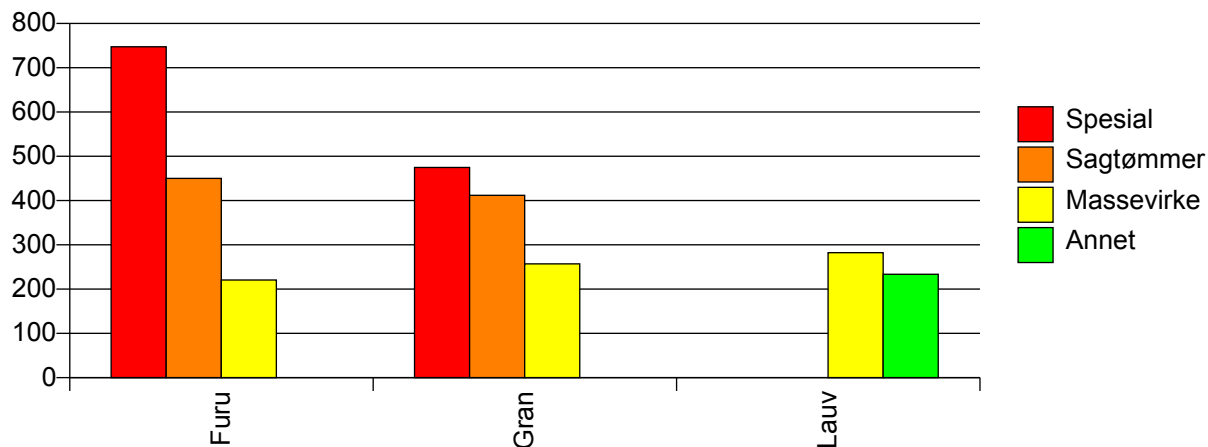
Volum (prosentfordelt)



Gjennomsnittspris 2010 (kr/kbm)

	Spesial	Sagtømmer	Massevirke	Annet	Vrak	Snitt
Furu	747	450	221		0	347
Gran	475	412	257		0	348
Lauv			282	234		242
Snitt	482	427	251	234	0	346

Gjennomsnittspris (kr/kbm)

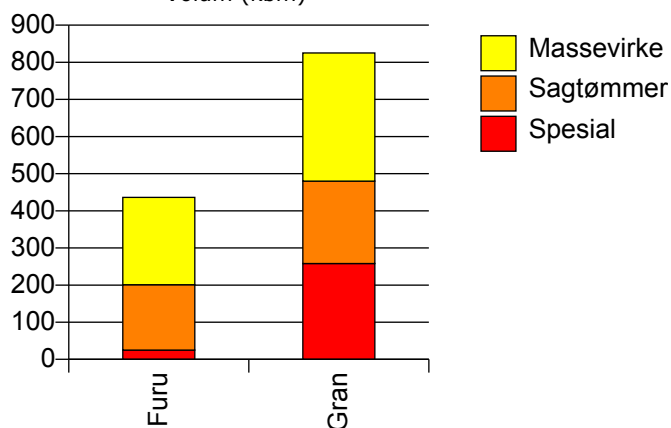


111 HVALER

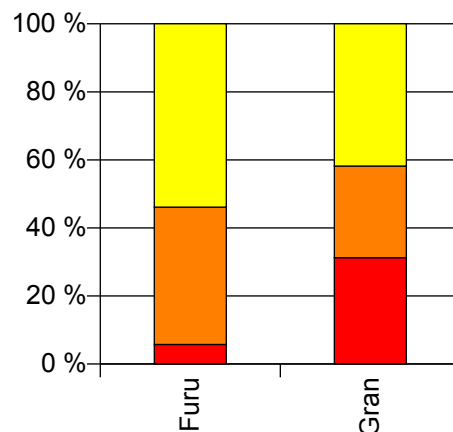
Volum 2010 (kbm)

	Spesial	Sagtømmer	Massevirke	Vrak	Sum:
Furu	25	176	235		436
Gran	258	222	345	0	825
Sum:	283	398	580	0	1 261

Volum (kbm)



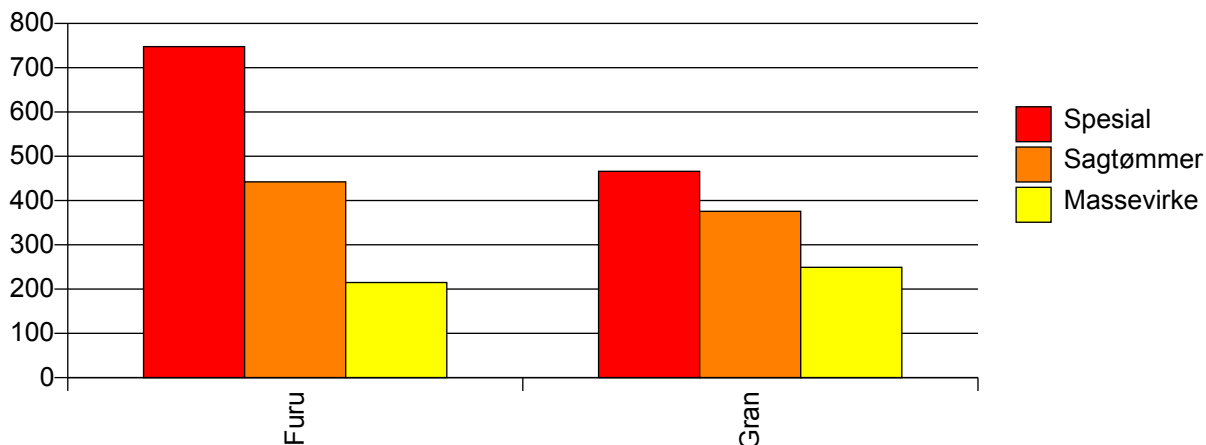
Volum (prosentfordelt)



Gjennomsnittspris 2010 (kr/kbm)

	Spesial	Sagtømmer	Massevirke	Vrak	Snitt
Furu	748	442	215		337
Gran	466	376	249	#DIV/0	351
Snitt	491	405	235	#DIV/0	346

Gjennomsnittspris (kr/kbm)

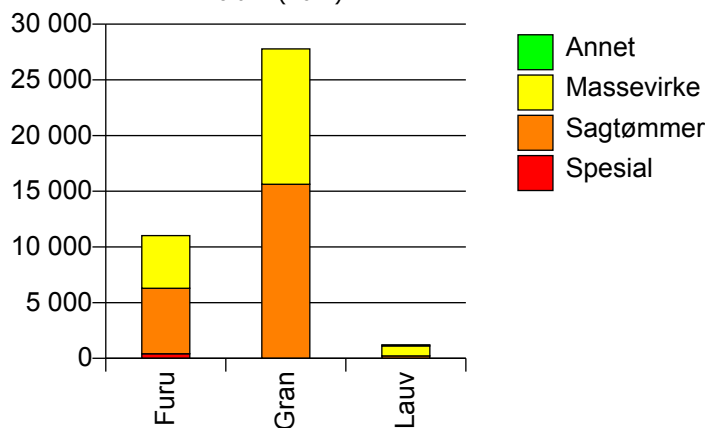


118 AREMARK

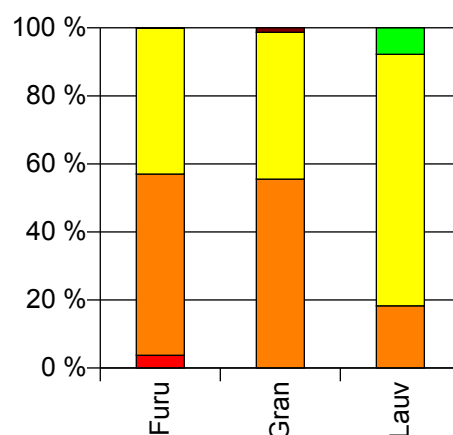
Volum 2010 (kbm)

	Spesial	Sagtømmer	Massevirke	Annet	Vrak	Sum:
Furu	412	5 876	4 735		2	11 025
Gran		15 631	12 153		370	28 154
Lauv		223	901	95		1 219
Sum:	412	21 730	17 789	95	372	40 398

Volum (kbm)



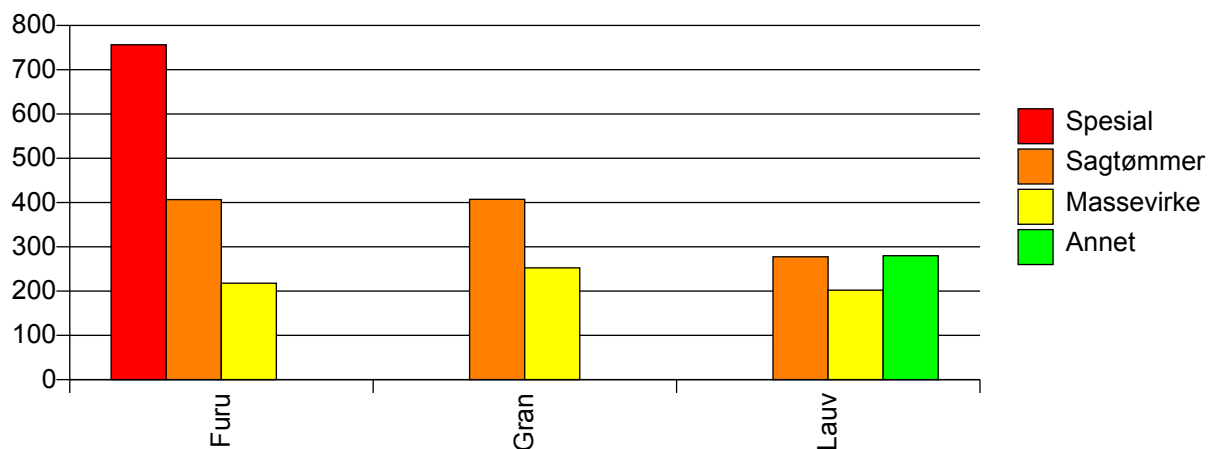
Volum (prosentfordelt)



Gjennomsnittspris 2010 (kr/kbm)

	Spesial	Sagtømmer	Massevirke	Annet	Vrak	Snitt
Furu	756	407	218		0	339
Gran		407	252		0	335
Lauv		277	202	280		222
Snitt	756	406	241	280	0	333

Gjennomsnittspris (kr/kbm)

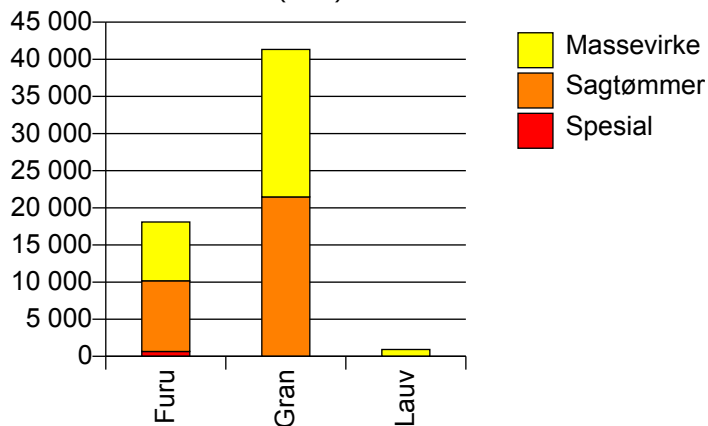


119 MARKER

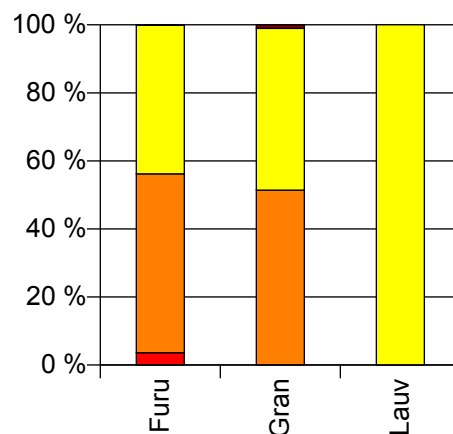
Volum 2010 (kbm)

	Spesial	Sagtømmer	Massevirke	Vrak	Sum:
Furu	656	9 513	7 924	5	18 098
Gran		21 467	19 861	436	41 764
Lauv			931		931
Sum:	656	30 980	28 716	441	60 793

Volum (kbm)



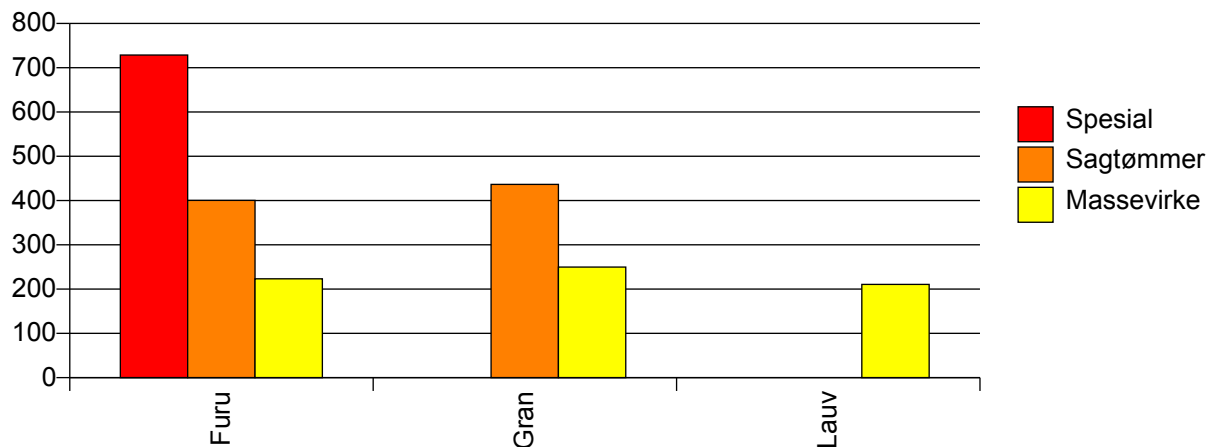
Volum (prosentfordelt)



Gjennomsnittspris 2010 (kr/kbm)

	Spesial	Sagtømmer	Massevirke	Vrak	Snitt
Furu	729	400	223	0	335
Gran		436	250	0	343
Lauv			211		211
Snitt	729	425	241	0	339

Gjennomsnittspris (kr/kbm)

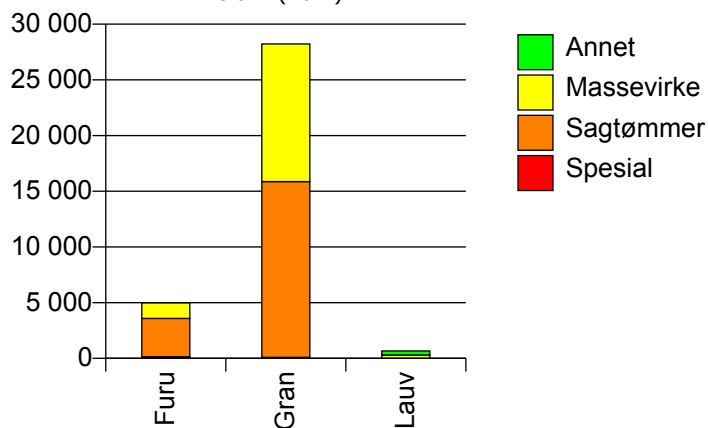


122 TRØGSTAD

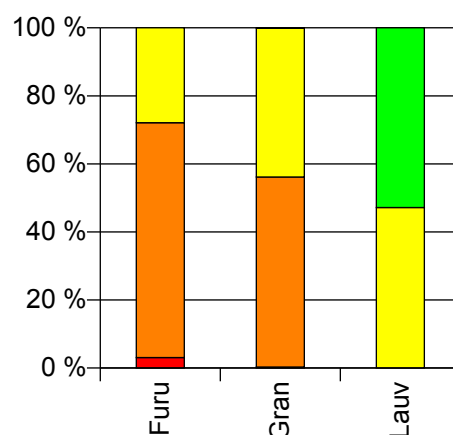
Volum 2010 (kbm)

	Spesial	Sagtømmer	Massevirke	Annet	Vrak	Sum:
Furu	153	3 438	1 389		0	4 980
Gran	84	15 783	12 361		29	28 257
Lauv			311	348		659
Sum:	237	19 221	14 061	348	29	33 896

Volum (kbm)



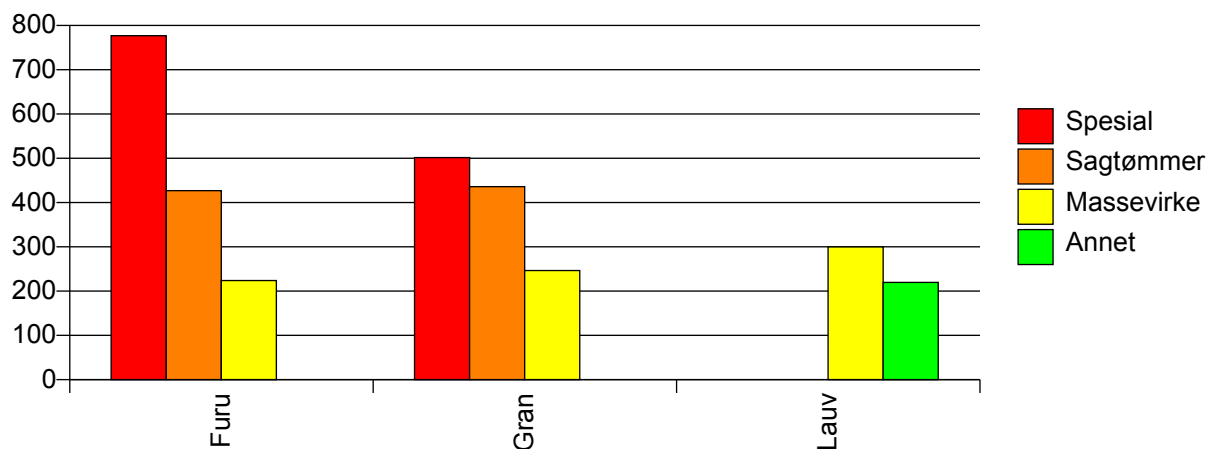
Volum (prosentfordelt)



Gjennomsnittspris 2010 (kr/kbm)

	Spesial	Sagtømmer	Massevirke	Annet	Vrak	Snitt
Furu	777	427	224		#DIV/0	381
Gran	502	436	247		0	353
Lauv			300	220		258
Snitt	679	434	246	220	0	355

Gjennomsnittspris (kr/kbm)

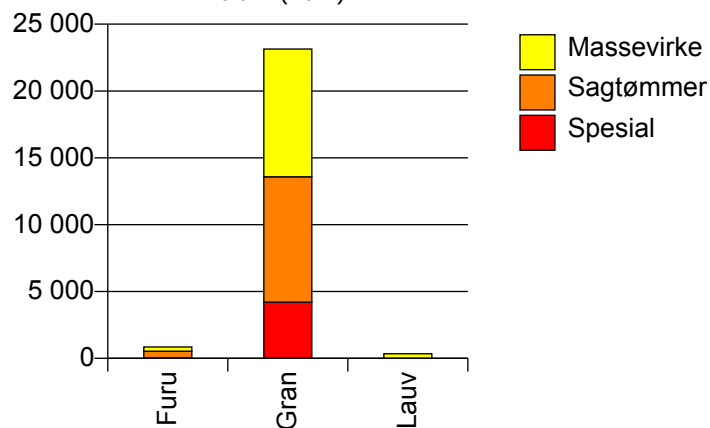


123 SPYDEBERG

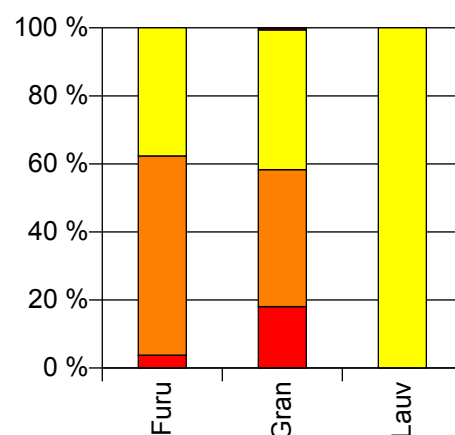
Volum 2010 (kbm)

	Spesial	Sagtømmer	Massevirke	Vrak	Sum:
Furu	32	498	320	0	850
Gran	4 201	9 378	9 562	142	23 283
Lauv			346		346
Sum:	4 233	9 876	10 228	142	24 479

Volum (kbm)



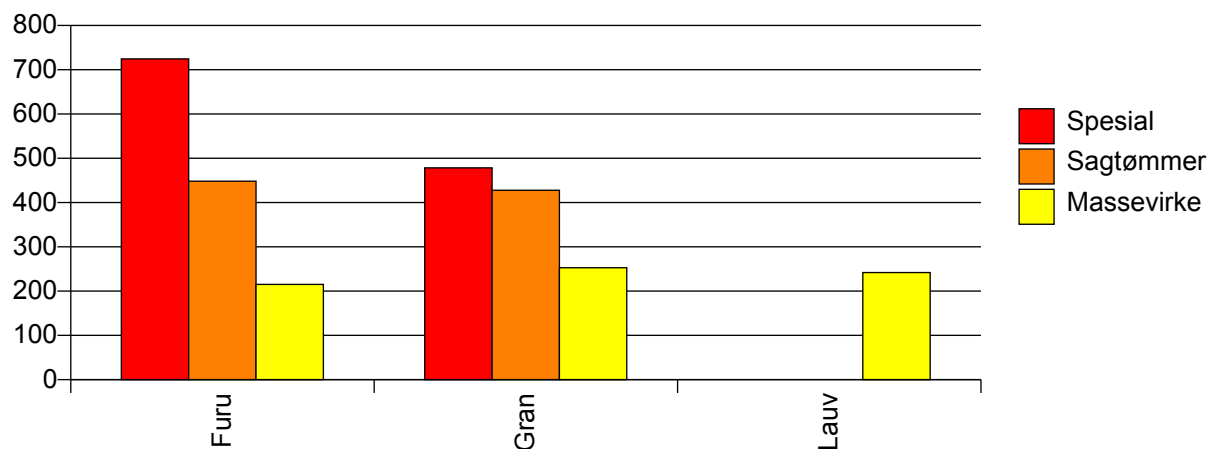
Volum (prosentfordelt)



Gjennomsnittspris 2010 (kr/kbm)

	Spesial	Sagtømmer	Massevirke	Vrak	Snitt
Furu	725	448	215	#DIV/0	371
Gran	478	428	253	0	362
Lauv			242		242
Snitt	480	429	251	0	361

Gjennomsnittspris (kr/kbm)

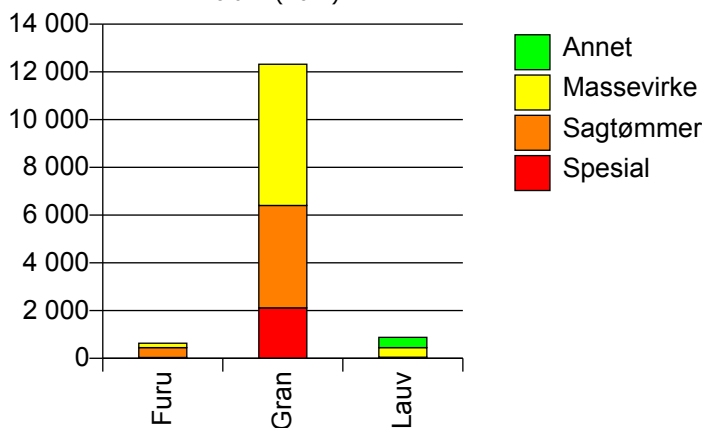


124 ASKIM

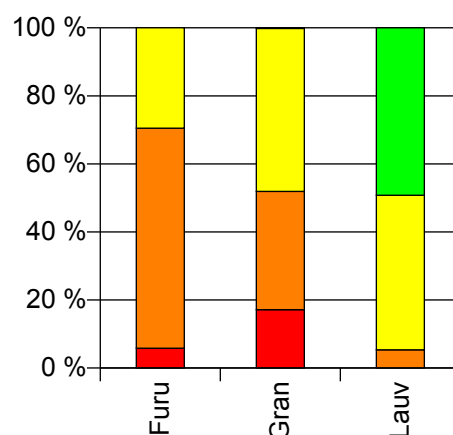
Volum 2010 (kbm)

	Spesial	Sagtømmer	Massevirke	Annet	Vrak	Sum:
Furu	37	410	187		0	634
Gran	2 115	4 291	5 914		20	12 340
Lauv		47	400	433		880
Sum:	2 152	4 748	6 501	433	20	13 854

Volum (kbm)



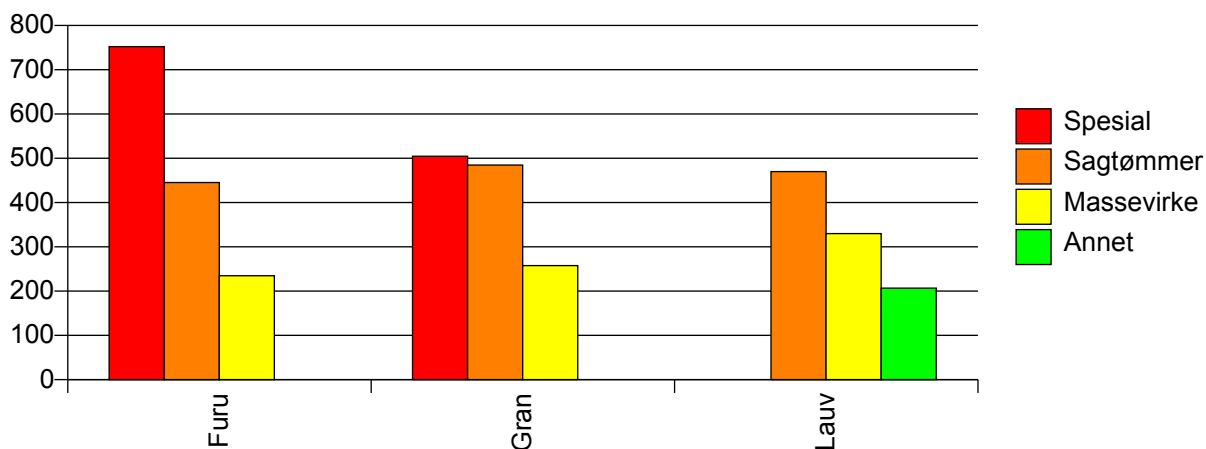
Volum (prosentfordelt)



Gjennomsnittspris 2010 (kr/kbm)

	Spesial	Sagtømmer	Massevirke	Annet	Vrak	Snitt
Furu	752	445	235		#DIV/0	401
Gran	505	485	258		0	379
Lauv		470	330	207		277
Snitt	509	481	261	207	0	373

Gjennomsnittspris (kr/kbm)

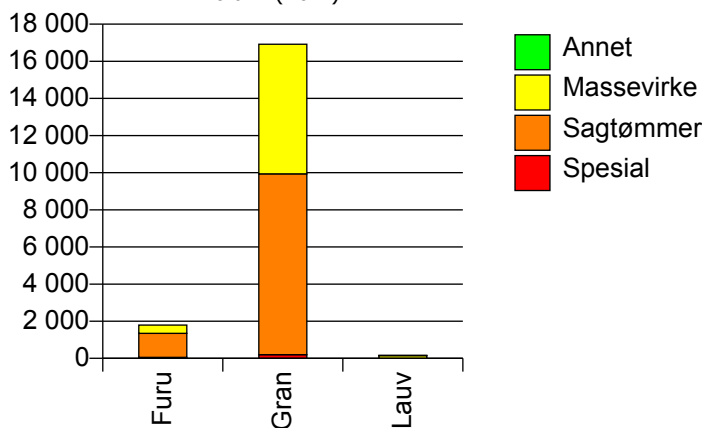


125 EIDSBERG

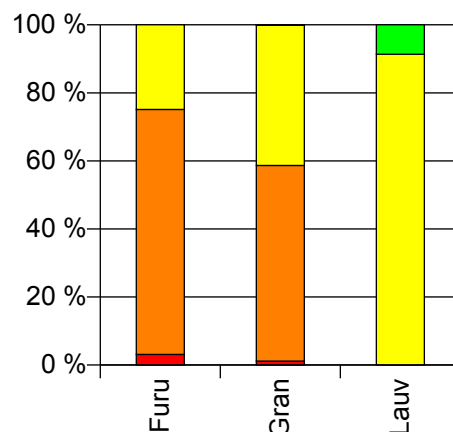
Volum 2010 (kbm)

	Spesial	Sagtømmer	Massevirke	Annet	Vrak	Sum:
Furu	56	1 289	445			1 790
Gran	197	9 742	6 983		24	16 946
Lauv			148	14		162
Sum:	253	11 031	7 576	14	24	18 898

Volum (kbm)



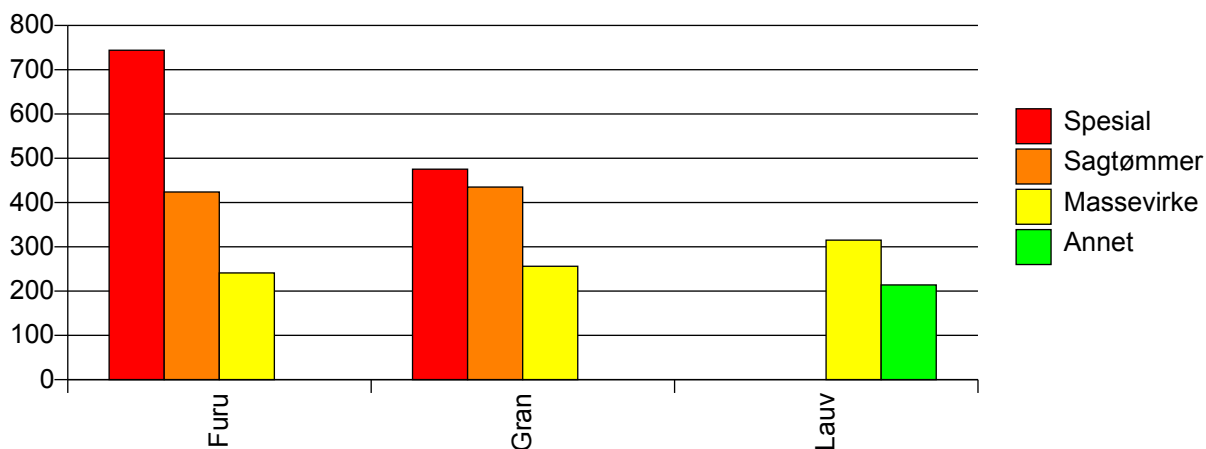
Volum (prosentfordelt)



Gjennomsnittspris 2010 (kr/kbm)

	Spesial	Sagtømmer	Massevirke	Annet	Vrak	Snitt
Furu	744	424	241			388
Gran	475	435	256		0	361
Lauv			315	214		307
Snitt	535	434	256	214	0	363

Gjennomsnittspris (kr/kbm)

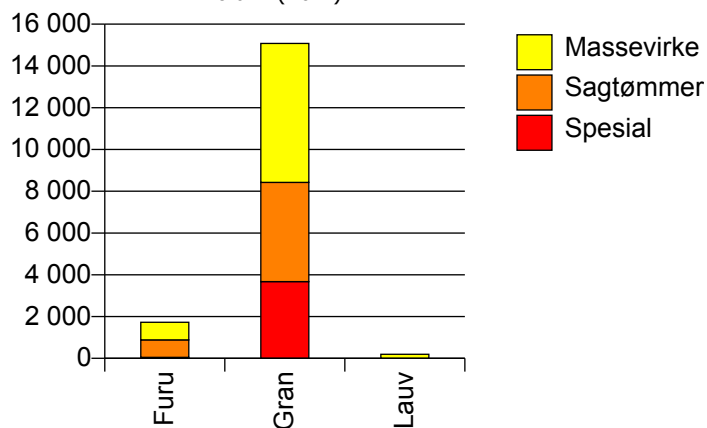


127 SKIPTVET

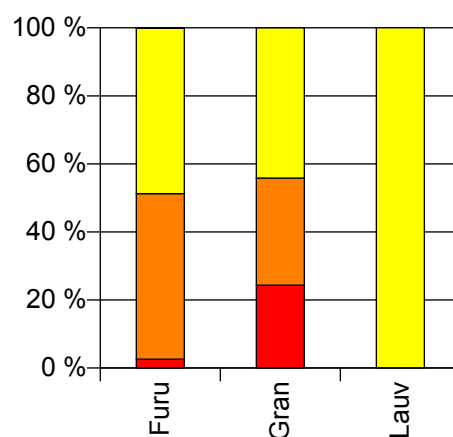
Volum 2010 (kbm)

	Spesial	Sagtømmer	Massevirke	Vrak	Sum:
Furu	45	839	840	1	1 725
Gran	3 672	4 750	6 653	5	15 080
Lauv			194		194
Sum:	3 717	5 589	7 687	6	16 999

Volum (kbm)



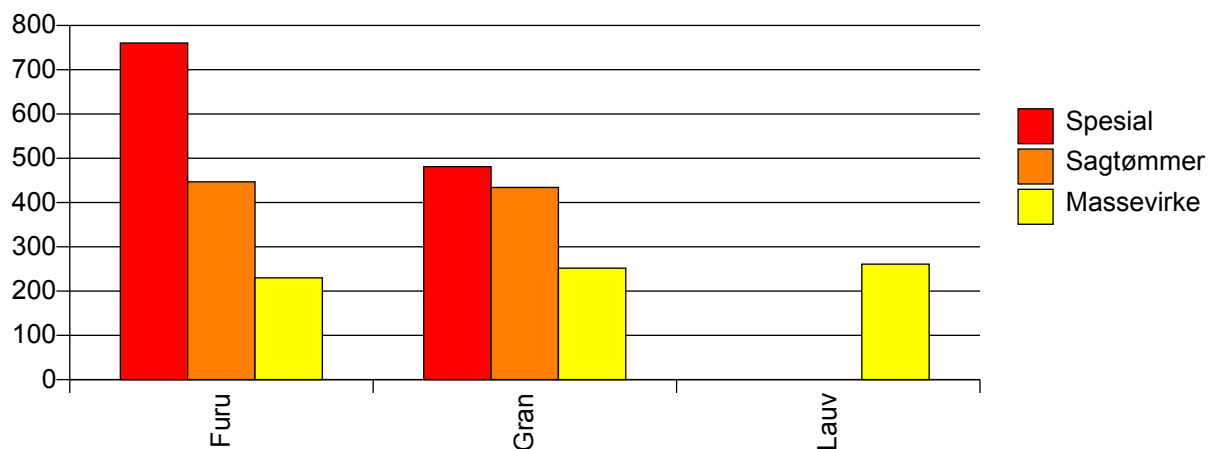
Volum (prosentfordelt)



Gjennomsnittspris 2010 (kr/kbm)

	Spesial	Sagtømmer	Massevirke	Vrak	Snitt
Furu	761	447	230	0	349
Gran	481	434	252	0	365
Lauv			261		261
Snitt	484	436	250	0	362

Gjennomsnittspris (kr/kbm)

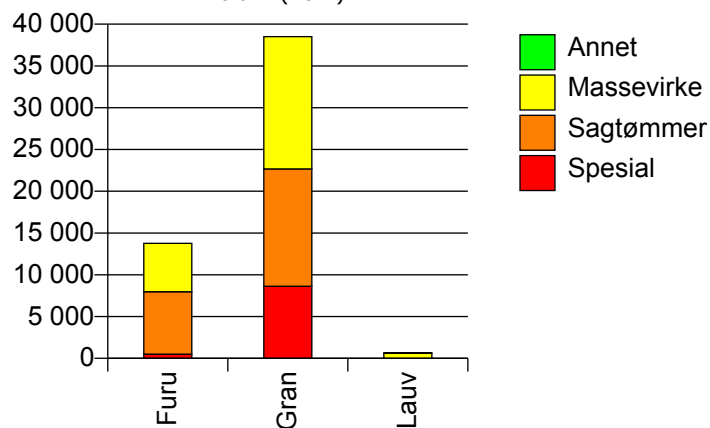


128 RAKKESTAD

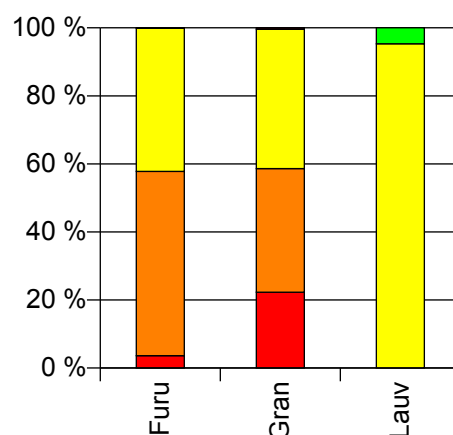
Volum 2010 (kbm)

	Spesial	Sagtømmer	Massevirke	Annet	Vrak	Sum:
Furu	499	7 471	5 804		19	13 793
Gran	8 624	14 048	15 836		166	38 674
Lauv			611	30		641
Sum:	9 123	21 519	22 251	30	185	53 108

Volum (kbm)



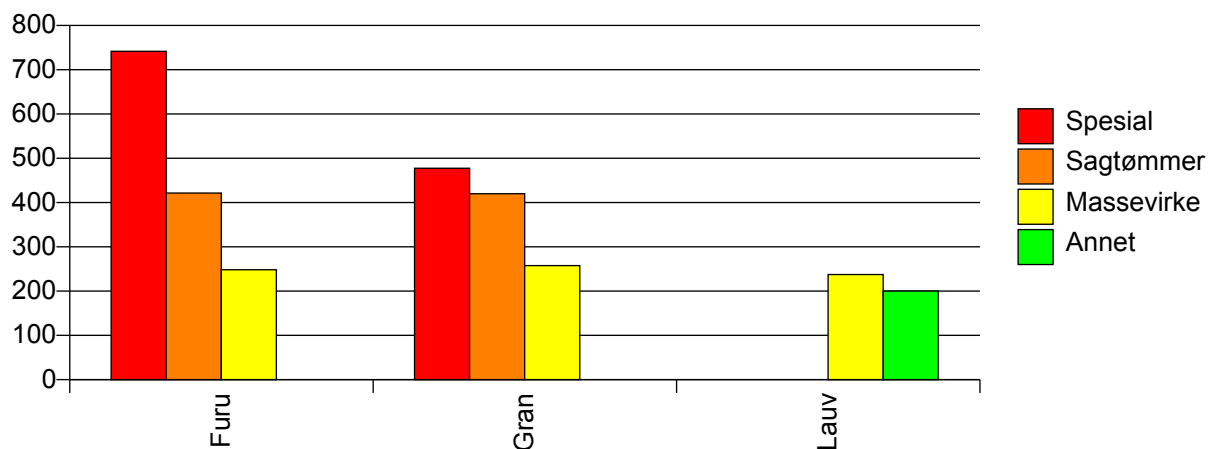
Volum (prosentfordelt)



Gjennomsnittspris 2010 (kr/kbm)

	Spesial	Sagtømmer	Massevirke	Annet	Vrak	Snitt
Furu	742	422	248		0	360
Gran	478	420	258		0	365
Lauv			237	200		236
Snitt	492	421	255	200	0	362

Gjennomsnittspris (kr/kbm)

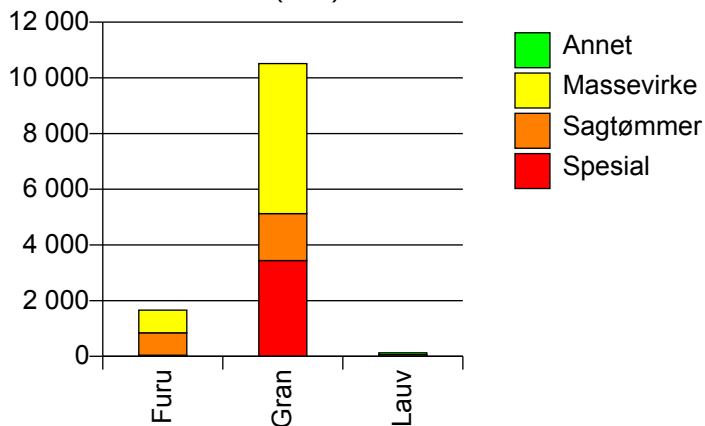


135 RÅDE

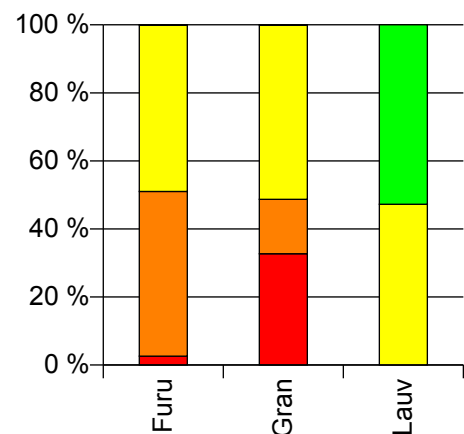
Volum 2010 (kbm)

	Spesial	Sagtømmer	Massevirke	Annet	Vrak	Sum:
Furu	43	804	812		1	1 660
Gran	3 440	1 684	5 388		7	10 519
Lauv			60	67		127
Sum:	3 483	2 488	6 260	67	8	12 306

Volum (kbm)



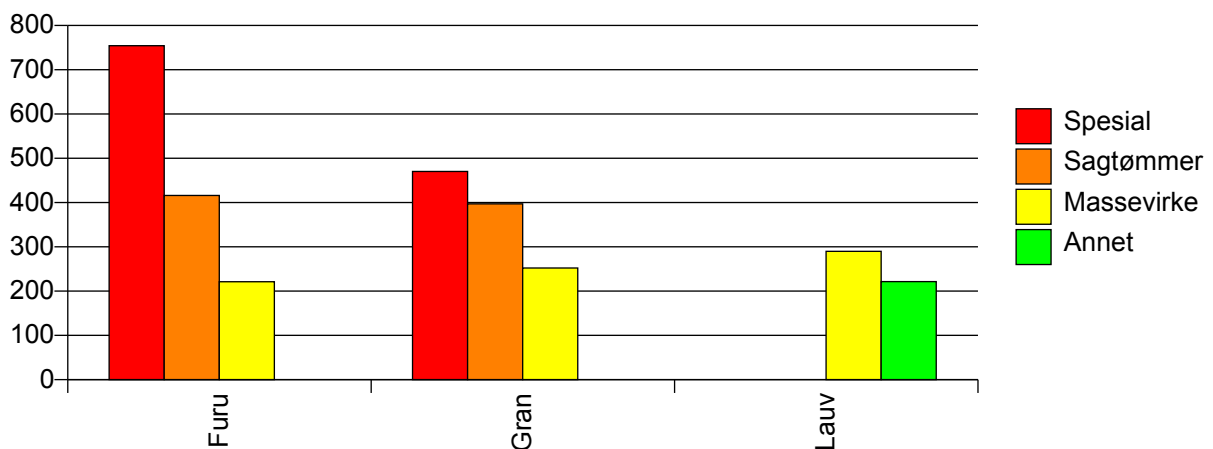
Volum (prosentfordelt)



Gjennomsnittspris 2010 (kr/kbm)

	Spesial	Sagtømmer	Massevirke	Annet	Vrak	Snitt
Furu	754	416	221		0	329
Gran	470	397	252		0	347
Lauv			290	221		254
Snitt	474	403	249	221	0	343

Gjennomsnittspris (kr/kbm)

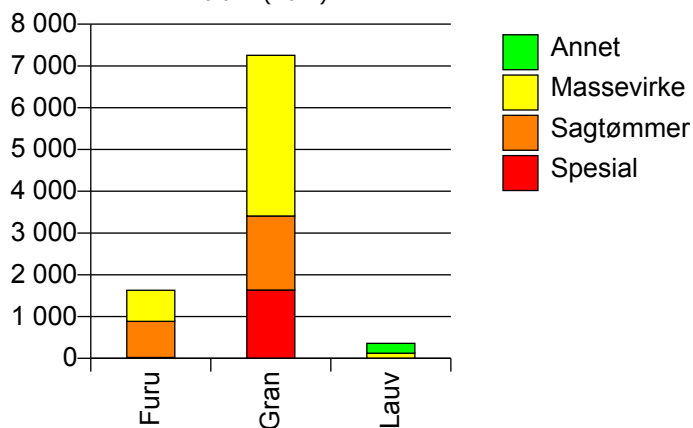


136 RYGGE

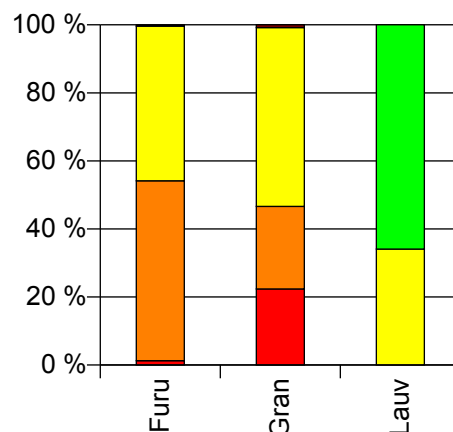
Volum 2010 (kbm)

	Spesial	Sagtømmer	Massevirke	Annet	Vrak	Sum:
Furu	21	865	744		6	1 636
Gran	1 635	1 774	3 845		58	7 312
Lauv			122	236		358
Sum:	1 656	2 639	4 711	236	64	9 306

Volum (kbm)



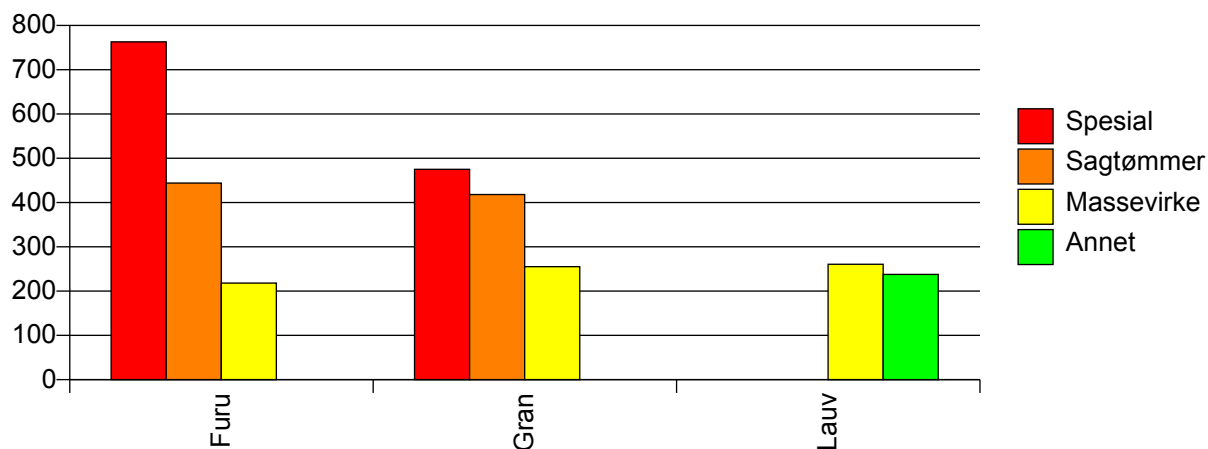
Volum (prosentfordelt)



Gjennomsnittspris 2010 (kr/kbm)

	Spesial	Sagtømmer	Massevirke	Annet	Vrak	Snitt
Furu	763	444	218		0	344
Gran	475	418	255		0	342
Lauv			261	238		246
Snitt	479	427	250	238	0	339

Gjennomsnittspris (kr/kbm)

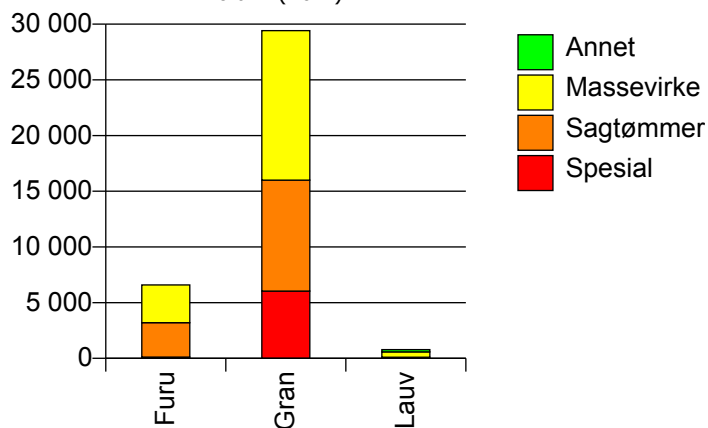


137 VÅLER I ØSTFOLD

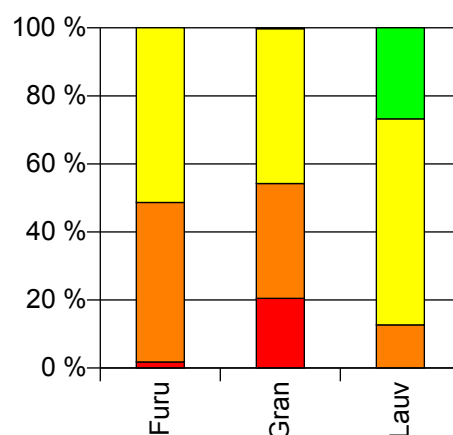
Volum 2010 (kbm)

	Spesial	Sagtømmer	Massevirke	Annet	Vrak	Sum:
Furu	117	3 088	3 383		0	6 588
Gran	6 038	9 963	13 422		71	29 494
Lauv		100	478	211		789
Sum:	6 155	13 151	17 283	211	71	36 871

Volum (kbm)



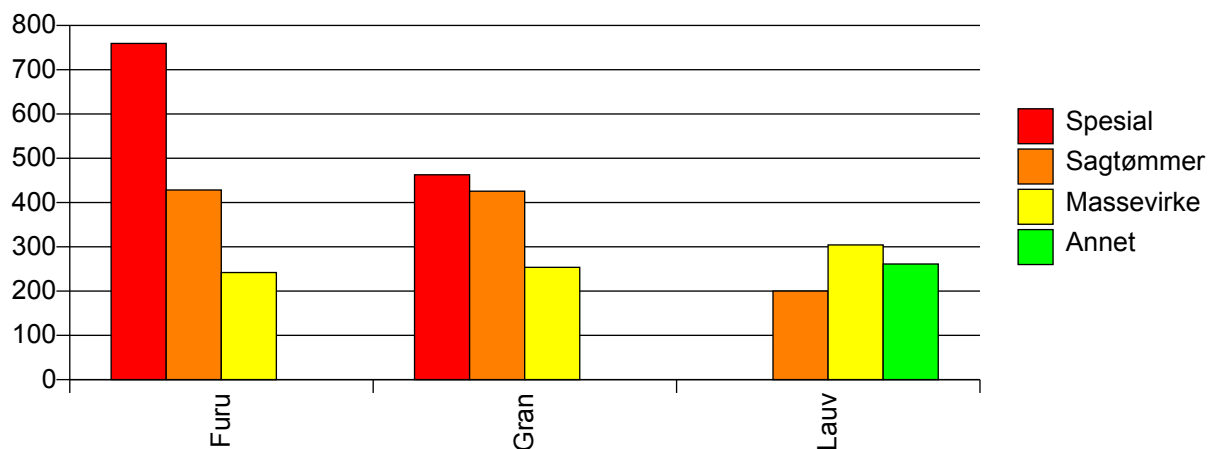
Volum (prosentfordelt)



Gjennomsnittspris 2010 (kr/kbm)

	Spesial	Sagtømmer	Massevirke	Annet	Vrak	Snitt
Furu	759	428	242		#DIV/0	339
Gran	463	426	254		1	354
Lauv		200	304	261		280
Snitt	468	425	253	261	37	350

Gjennomsnittspris (kr/kbm)

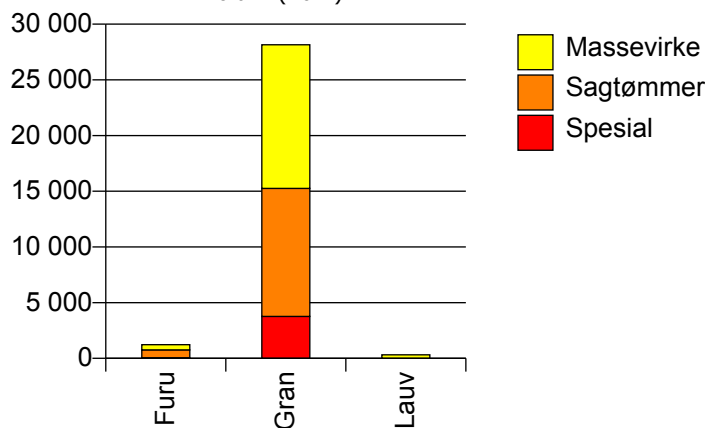


138 HOBØL

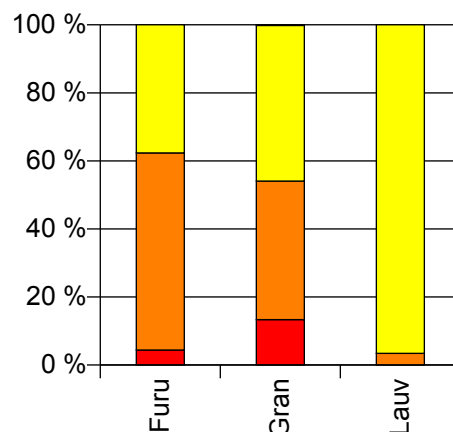
Volum 2010 (kbm)

	Spesial	Sagtømmer	Massevirke	Vrak	Sum:
Furu	54	711	462	0	1 227
Gran	3 761	11 496	12 898	54	28 209
Lauv		11	311		322
Sum:	3 815	12 218	13 671	54	29 758

Volum (kbm)



Volum (prosentfordelt)



Gjennomsnittspris 2010 (kr/kbm)

	Spesial	Sagtømmer	Massevirke	Vrak	Snitt
Furu	764	468	225	#DIV/0	390
Gran	501	438	254	0	361
Lauv		500	237		246
Snitt	505	440	252	0	361

Gjennomsnittspris (kr/kbm)

