

Virkestatistikk fra

SKOG-DATA AS

Vestfold m/kommuner

Dataene i rapporten er hentet fra databasen som inneholder virkesdata med tilhørende innbetalinger av skogavgift. Rapporten er laget med Business Objects, som er sluttbrukerverktøyet i Skog-Data sine nye datavarehus-løsninger. Business Objects er ett meget sterkt rapportverktøy som kan presentere store mengder data effektivt.

Rapportene kan lastes ned fra www.skogdata.no/statistikk

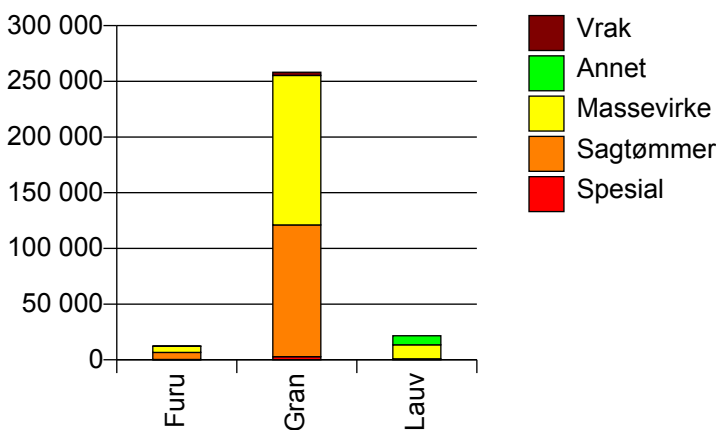
For mer informasjon, kontakt: tabh@skogdata.no

Vestfold

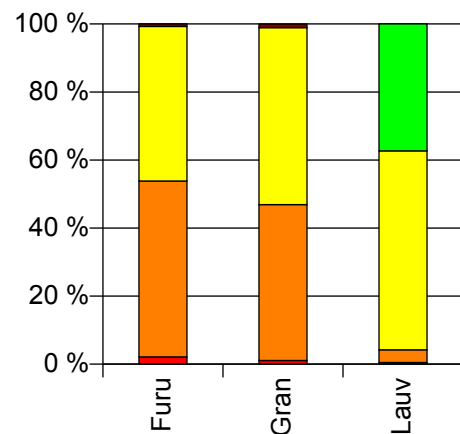
Volum 2009

	Spesial	Sagtømmer	Massevirke	Annet	Vrak	Sum:
Furu	264	6 352	5 584		88	12 288
Gran	2 783	118 296	134 261		2 785	258 125
Lauv	102	805	12 613	8 041	0	21 561
Sum:	3 149	125 453	152 458	8 041	2 873	291 974

Volum (kbm)



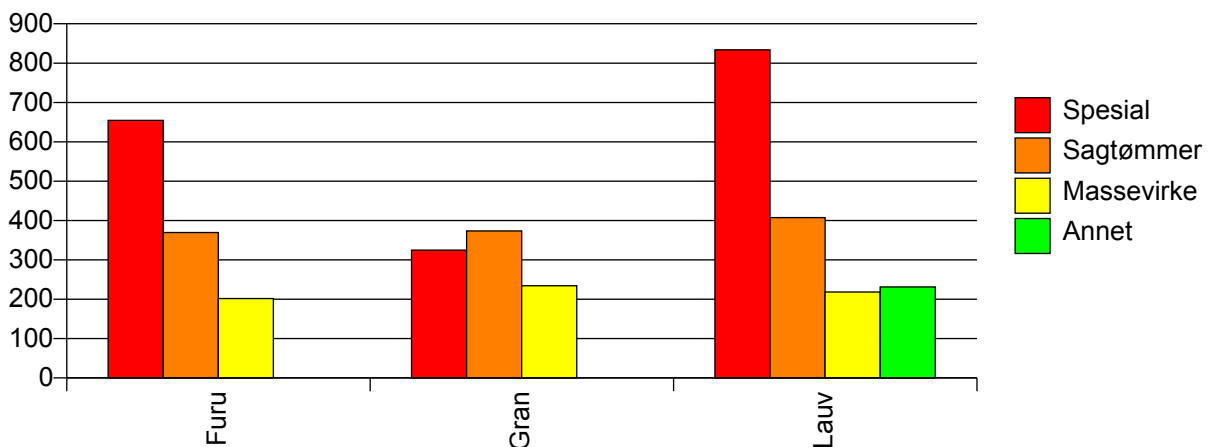
Volum (prosentfordelt)



Gjennomsnittspris 2009 (kr/kbm)

	Spesial	Sagtømmer	Massevirke	Annet	Vrak	Snitt:
Furu	654	370	202		0	297
Gran	325	374	234		0	297
Lauv	834	408	219	231	#DIV/0	233
Snitt:	369	374	232	231	0	292

Gjennomsnittspris (kr/kbm)

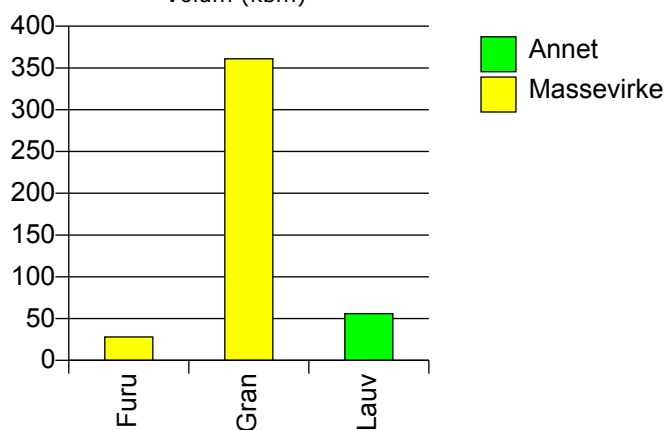


723 TJØME

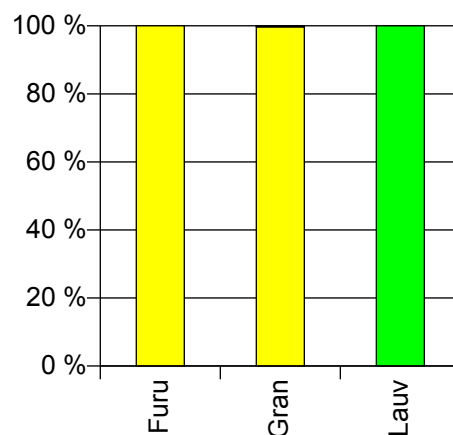
Volum 2009 (kbm)

	Massevirke	Annet	Vrak	Sum:
Furu	28			28
Gran	361		1	362
Lauv		56		56
Sum:	389	56	1	446

Volum (kbm)



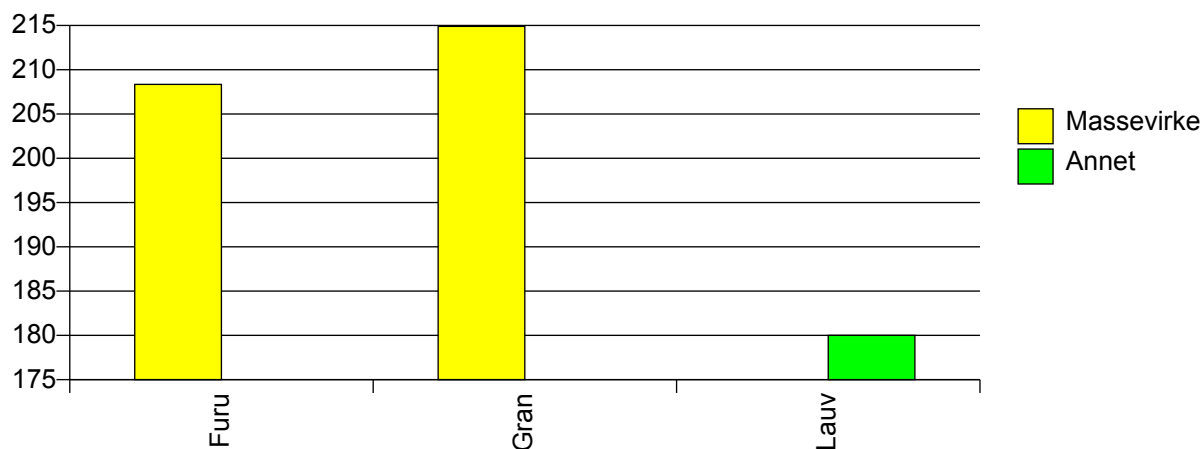
Volum (prosentfordelt)



Gjennomsnittspris 2009 (kr/kbm)

	Massevirke	Annet	Vrak	Snitt
Furu	208			208
Gran	215		0	214
Lauv		180		180
Snitt	214	180	0	210

Gjennomsnittspris (kr/kbm)

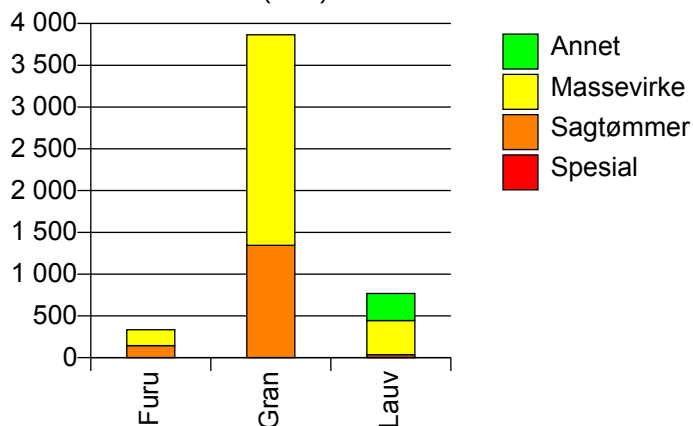


701 BORRE

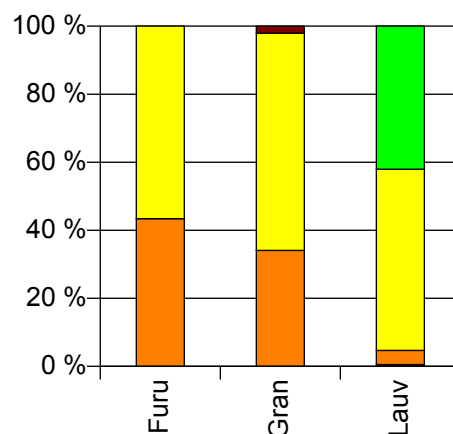
Volum 2009 (kbm)

	Spesial	Sagtømmer	Massevirke	Annet	Vrak	Sum:
Furu		145	189		0	334
Gran		1 345	2 520		82	3 947
Lauv	4	32	409	323		768
Sum:	4	1 522	3 118	323	82	5 049

Volum (kbm)



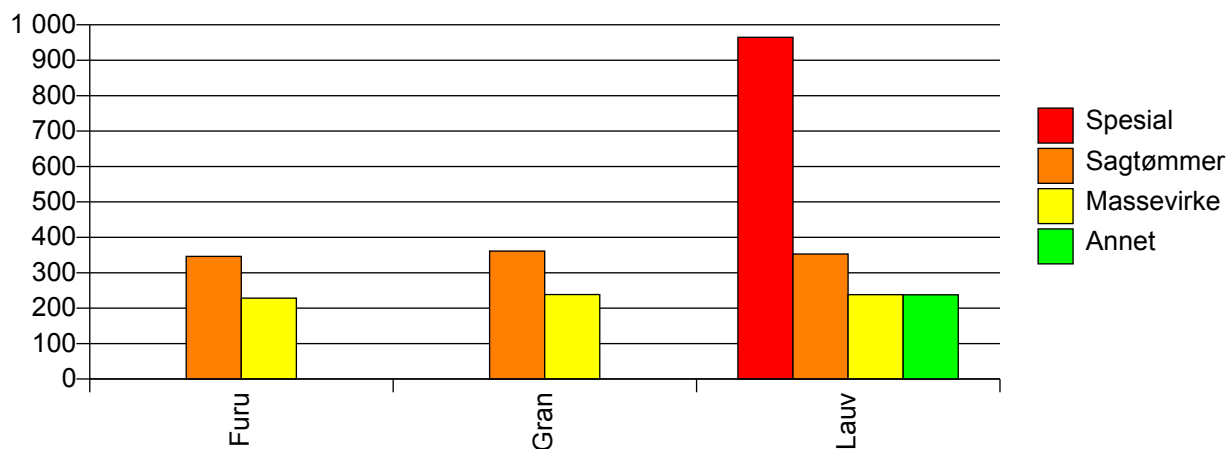
Volum (prosentfordelt)



Gjennomsnittspris 2009 (kr/kbm)

	Spesial	Sagtømmer	Massevirke	Annet	Vrak	Snitt
Furu		346	228		#DIV/0	280
Gran		361	238		0	275
Lauv	965	353	238	238		247
Snitt	965	360	238	238	0	271

Gjennomsnittspris (kr/kbm)

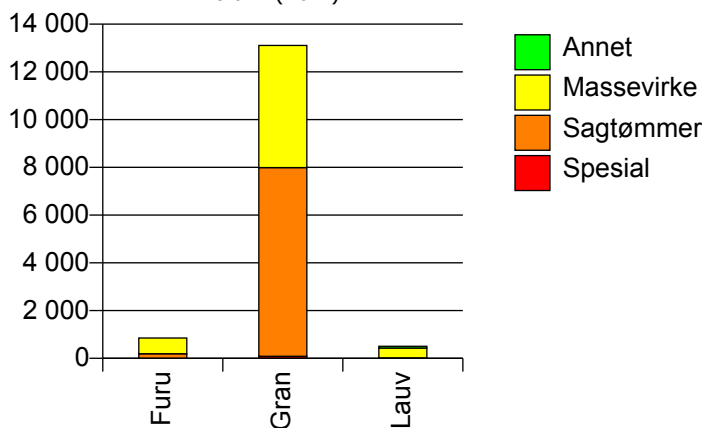


702 HOLMESTRAND

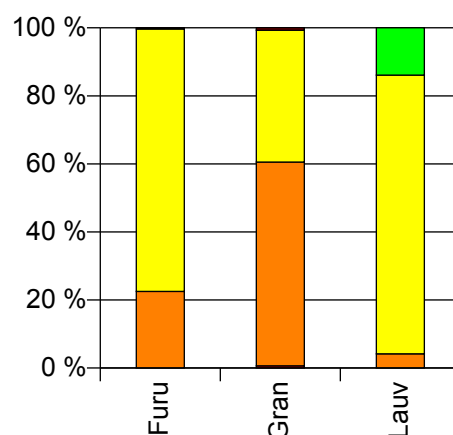
Volum 2009 (kbm)

	Spesial	Sagtømmer	Massevirke	Annet	Vrak	Sum:
Furu		192	658		3	853
Gran	85	7 907	5 118		91	13 201
Lauv		21	413	70		504
Sum:	85	8 120	6 189	70	94	14 558

Volum (kbm)



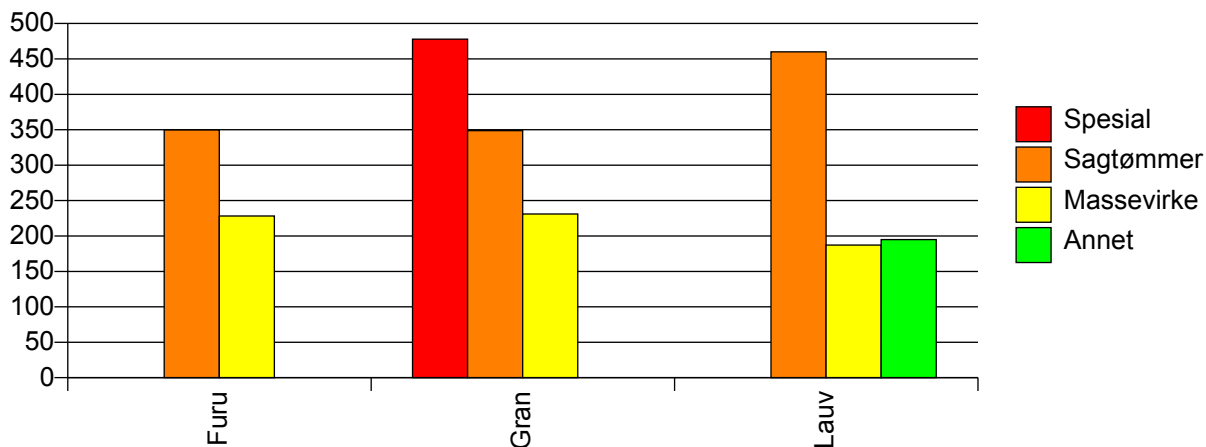
Volum (prosentfordelt)



Gjennomsnittspris 2009 (kr/kbm)

	Spesial	Sagtømmer	Massevirke	Annet	Vrak	Snitt
Furu		350	228		0	255
Gran	478	349	231		0	302
Lauv		460	187	195		200
Snitt	478	349	228	195	0	295

Gjennomsnittspris (kr/kbm)

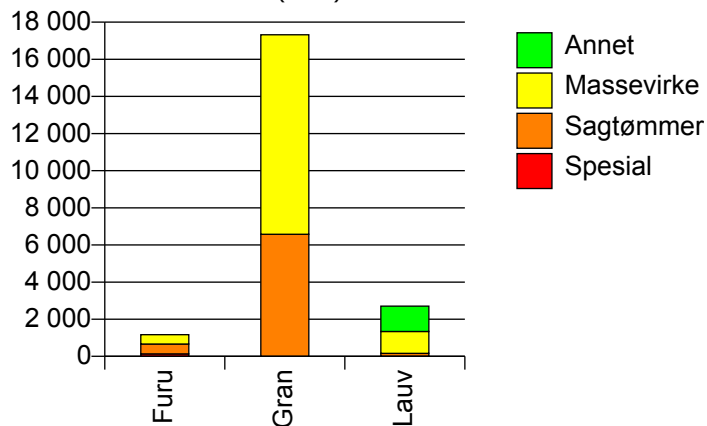


704 TØNSBERG

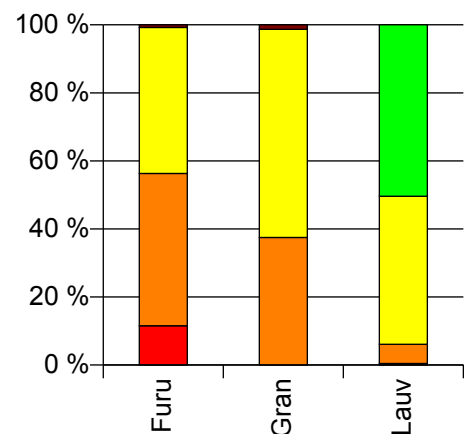
Volum 2009 (kbm)

	Spesial	Sagtømmer	Massevirke	Annet	Vrak	Sum:
Furu	136	527	505		9	1 177
Gran		6 579	10 743		232	17 554
Lauv	12	153	1 176	1 363		2 704
Sum:	148	7 259	12 424	1 363	241	21 435

Volum (kbm)



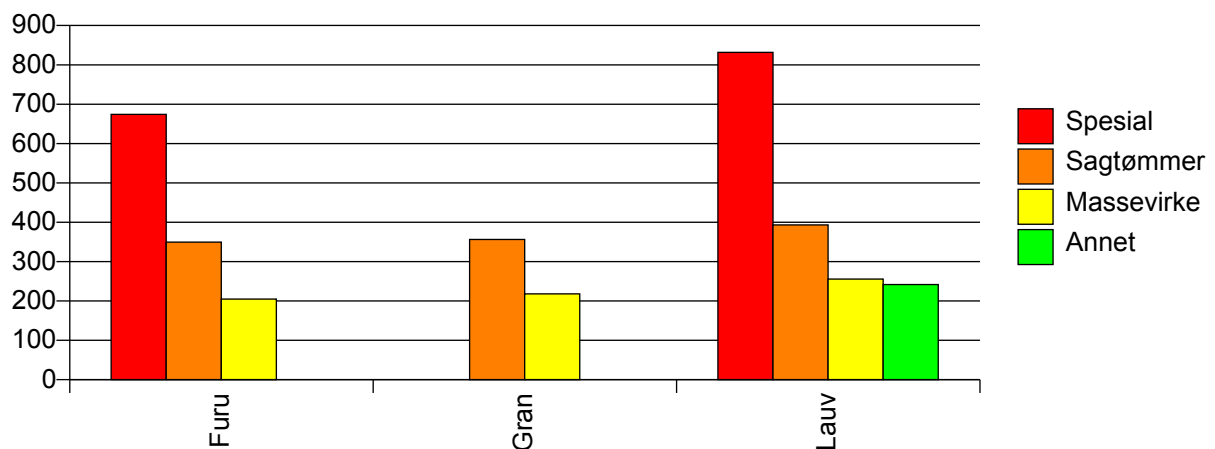
Volum (prosentfordelt)



Gjennomsnittspris 2009 (kr/kbm)

	Spesial	Sagtømmer	Massevirke	Annet	Vrak	Snitt
Furu	674	349	205		0	322
Gran		356	218		0	267
Lauv	832	393	255	242		259
Snitt	687	357	221	242	0	269

Gjennomsnittspris (kr/kbm)

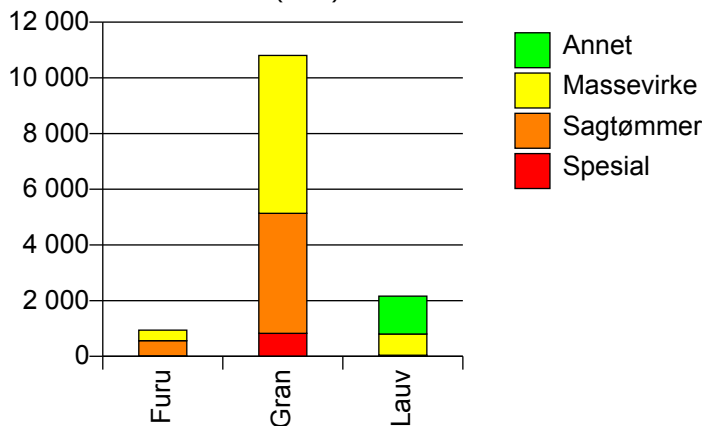


706 SANDEFJORD

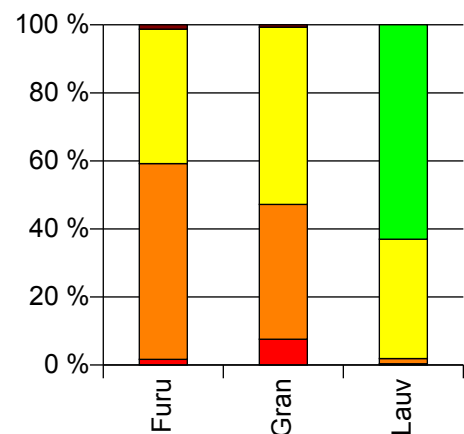
Volum 2009 (kbm)

	Spesial	Sagtømmer	Massevirke	Annet	Vrak	Sum:
Furu	16	547	376		12	951
Gran	827	4 309	5 668		74	10 878
Lauv	8	33	759	1 362		2 162
Sum:	851	4 889	6 803	1 362	86	13 991

Volum (kbm)



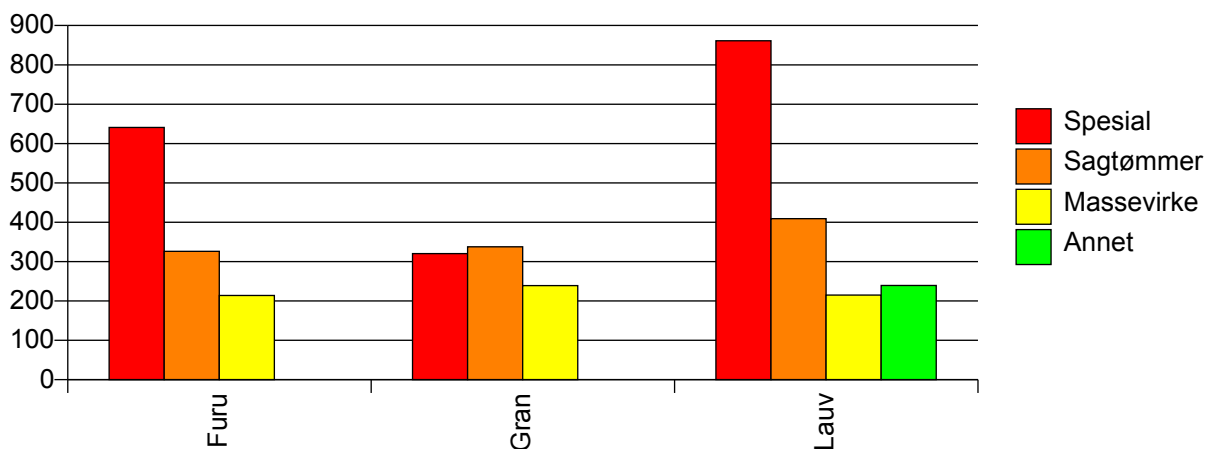
Volum (prosentfordelt)



Gjennomsnittspris 2009 (kr/kbm)

	Spesial	Sagtømmer	Massevirke	Annet	Vrak	Snitt
Furu	641	326	214		0	283
Gran	320	338	239		0	283
Lauv	861	409	215	240		236
Snitt	332	337	235	240	0	275

Gjennomsnittspris (kr/kbm)

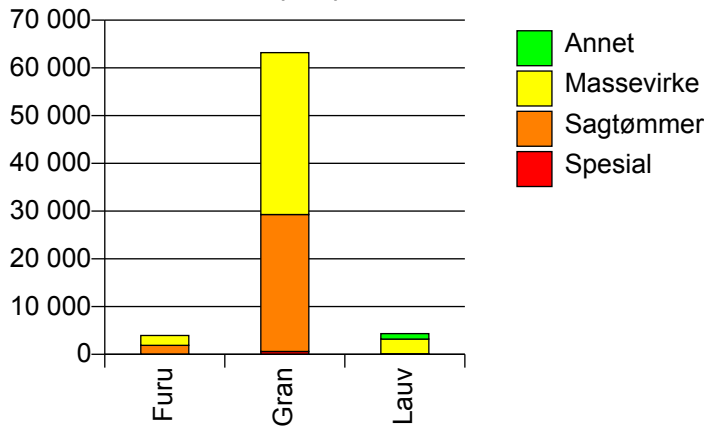


709 LARVIK

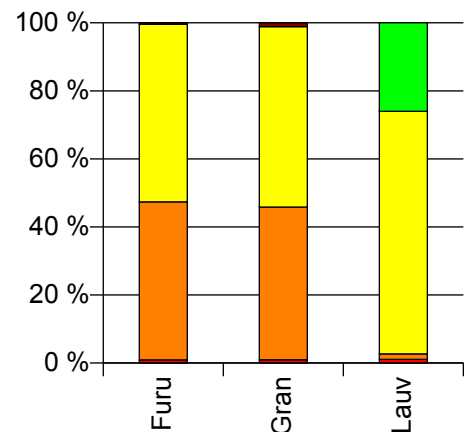
Volum 2009 (kbm)

	Spesial	Sagtømmer	Massevirke	Annet	Vrak	Sum:
Furu	37	1 848	2 079		16	3 980
Gran	611	28 690	33 907		713	63 921
Lauv	46	70	3 096	1 128		4 340
Sum:	694	30 608	39 082	1 128	729	72 241

Volum (kbm)



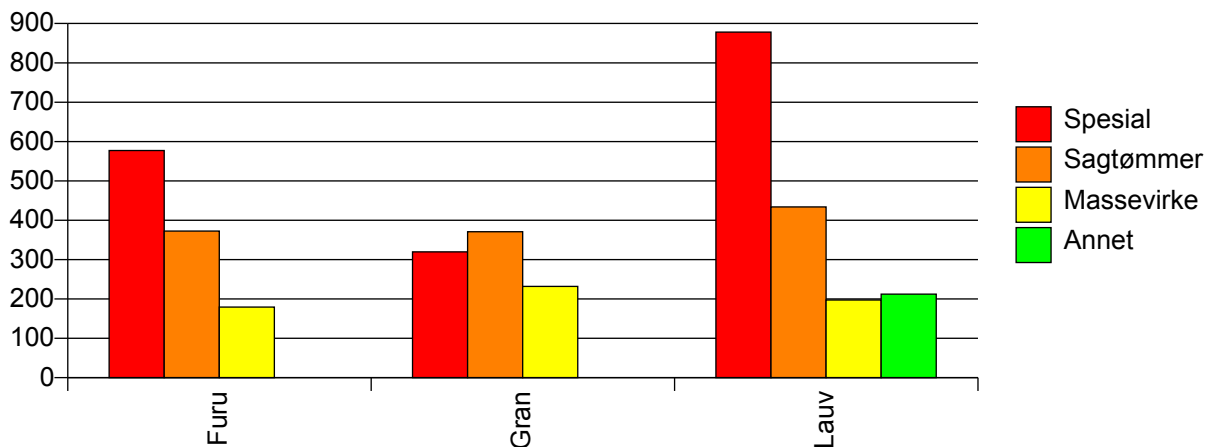
Volum (prosentfordelt)



Gjennomsnittspris 2009 (kr/kbm)

	Spesial	Sagtømmer	Massevirke	Annet	Vrak	Snitt
Furu	577	373	179		0	272
Gran	320	371	232		0	293
Lauv	878	434	197	212		212
Snitt	370	371	226	212	0	287

Gjennomsnittspris (kr/kbm)

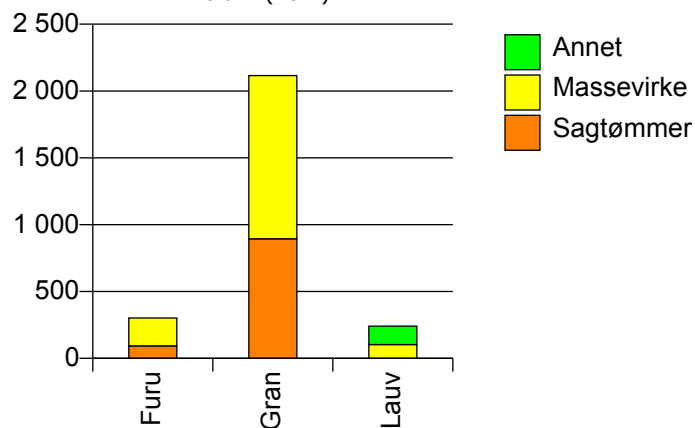


711 SVELVIK

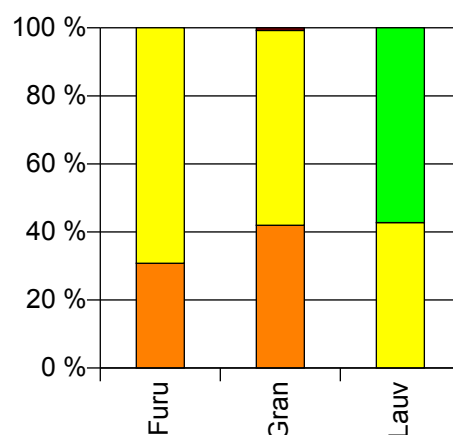
Volum 2009 (kbm)

	Sagtømmer	Massevirke	Annet	Vrak	Sum:
Furu	93	209		0	302
Gran	894	1 221		16	2 131
Lauv		103	138		241
Sum:	987	1 533	138	16	2 674

Volum (kbm)



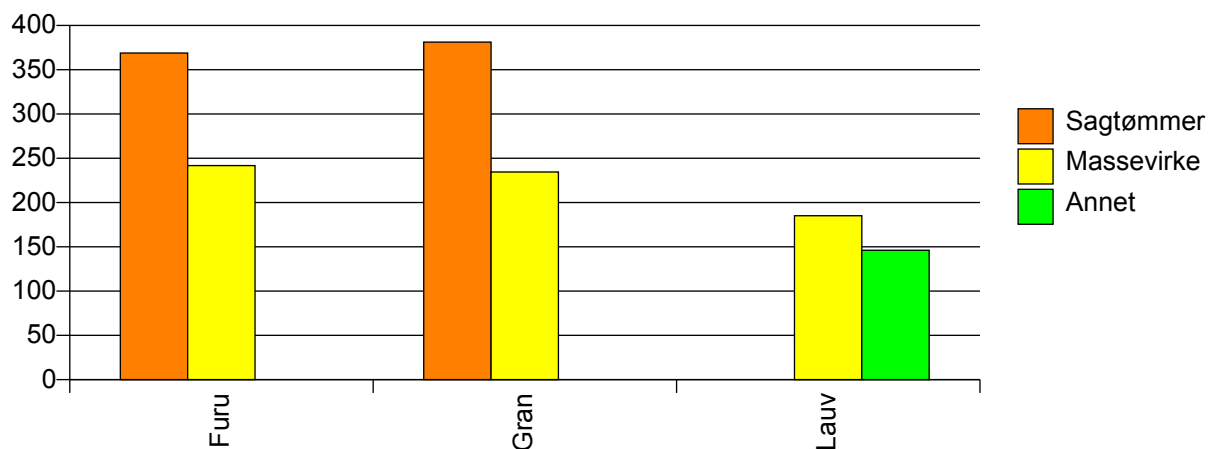
Volum (prosentfordelt)



Gjennomsnittspris 2009 (kr/kbm)

	Sagtømmer	Massevirke	Annet	Vrak	Snitt
Furu	369	242		#DIV/0	281
Gran	381	235		0	294
Lauv		185	146		163
Snitt	380	232	146	0	281

Gjennomsnittspris (kr/kbm)

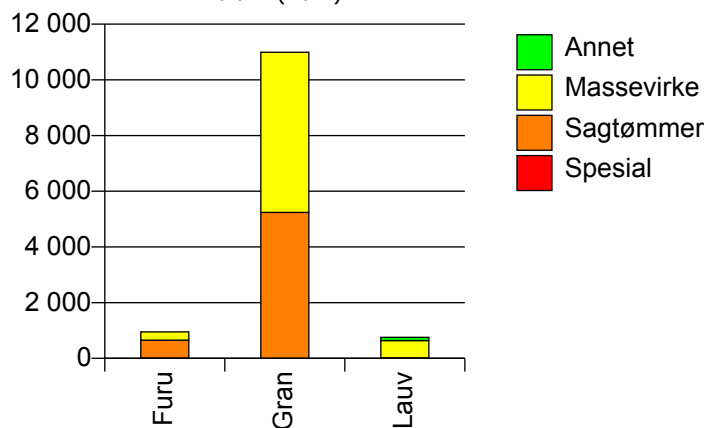


713 SANDE

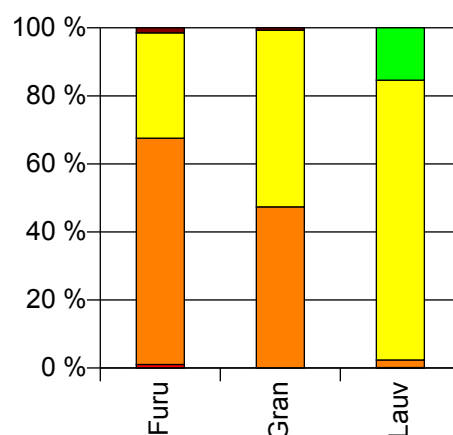
Volum 2009 (kbm)

	Spesial	Sagtømmer	Massevirke	Annet	Vrak	Sum:
Furu	10	642	299		14	965
Gran		5 243	5 751		76	11 070
Lauv	1	17	620	116		754
Sum:	11	5 902	6 670	116	90	12 789

Volum (kbm)



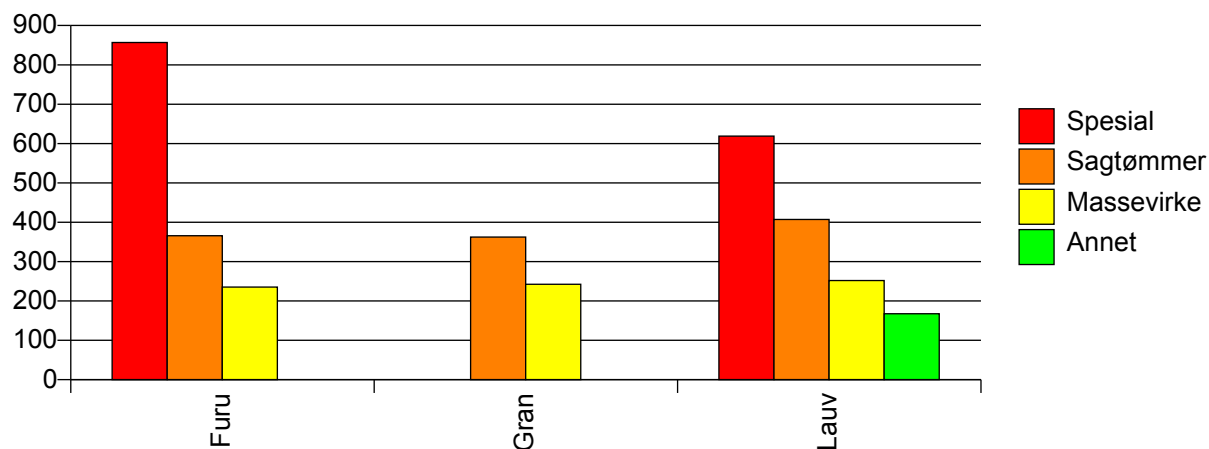
Volum (prosentfordelt)



Gjennomsnittspris 2009 (kr/kbm)

	Spesial	Sagtømmer	Massevirke	Annet	Vrak	Snitt
Furu	857	366	235		0	325
Gran		363	242		0	298
Lauv	619	407	252	168		243
Snitt	835	363	243	168	0	297

Gjennomsnittspris (kr/kbm)

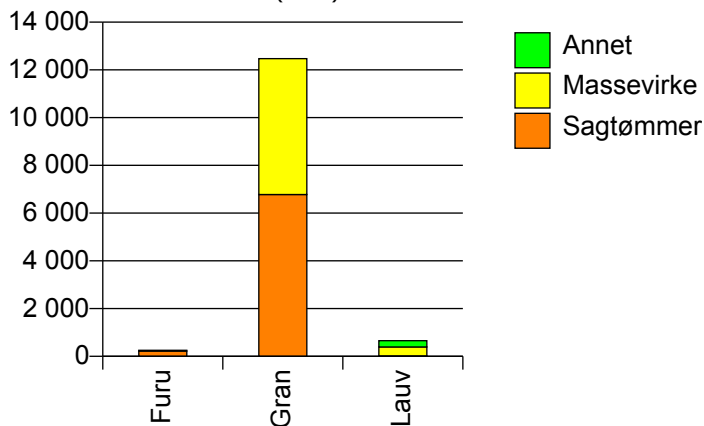


714 HOF

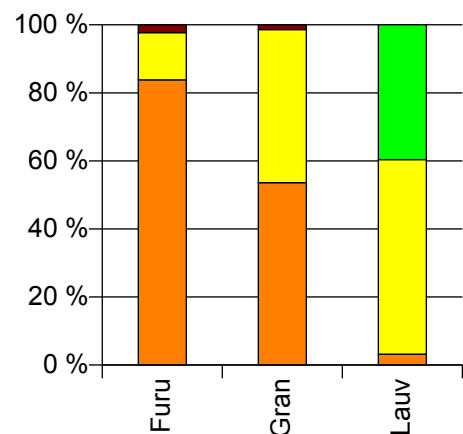
Volum 2009 (kbm)

	Sagtømmer	Massevirke	Annet	Vrak	Sum:
Furu	218	36		6	260
Gran	6 779	5 694		175	12 648
Lauv	21	374	259		654
Sum:	7 018	6 104	259	181	13 562

Volum (kbm)



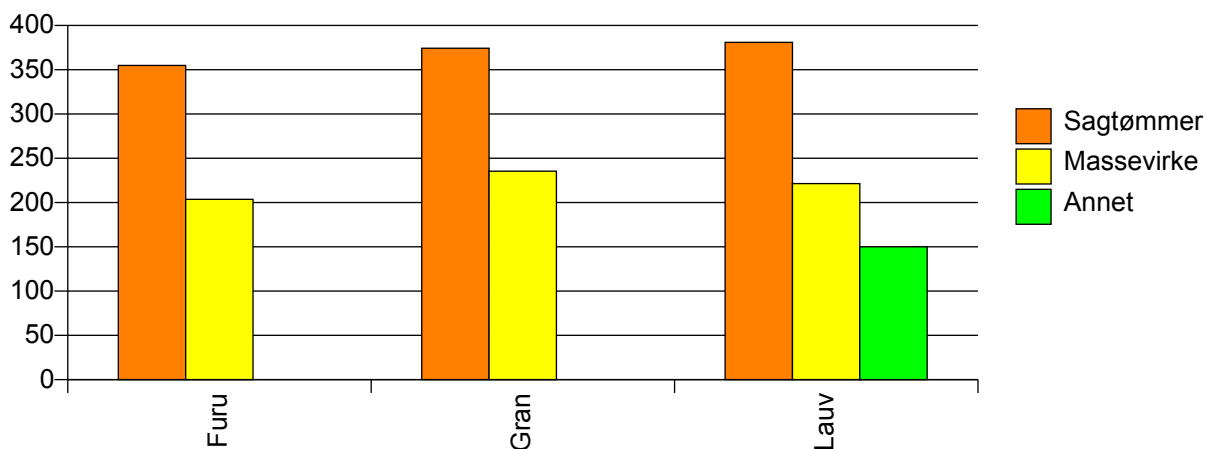
Volum (prosentfordelt)



Gjennomsnittspris 2009 (kr/kbm)

	Sagtømmer	Massevirke	Annet	Vrak	Snitt
Furu	355	204		0	326
Gran	374	236		0	307
Lauv	381	221	150		198
Snitt	374	234	150	0	302

Gjennomsnittspris (kr/kbm)

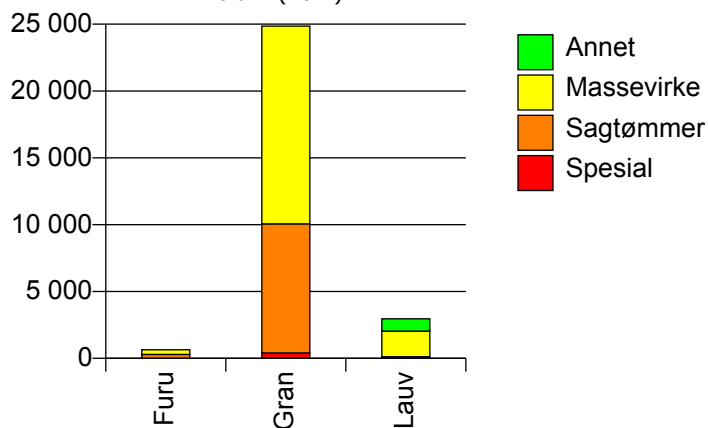


716 RE

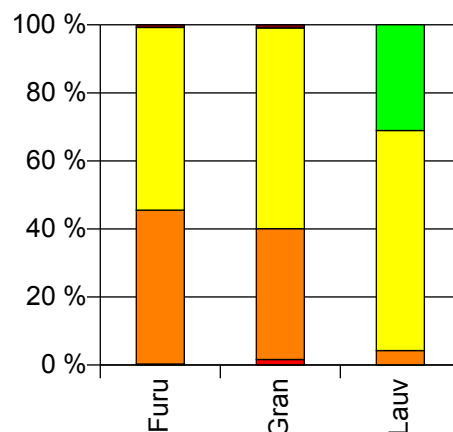
Volum 2009 (kbm)

	Spesial	Sagtømmer	Massevirke	Annet	Vrak	Sum:
Furu	2	293	348		5	648
Gran	405	9 655	14 798		235	25 093
Lauv	1	125	1 910	917		2 953
Sum:	408	10 073	17 056	917	240	28 694

Volum (kbm)



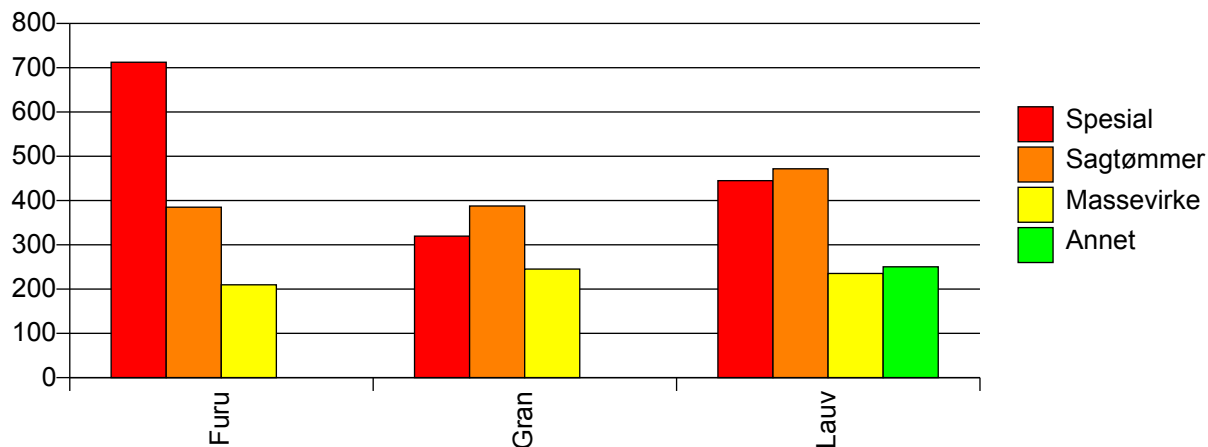
Volum (prosentfordelt)



Gjennomsnittspris 2009 (kr/kbm)

	Spesial	Sagtømmer	Massevirke	Annet	Vrak	Snitt
Furu	713	385	210		0	289
Gran	320	388	245		0	299
Lauv	445	472	235	251		250
Snitt	322	389	244	251	0	294

Gjennomsnittspris (kr/kbm)

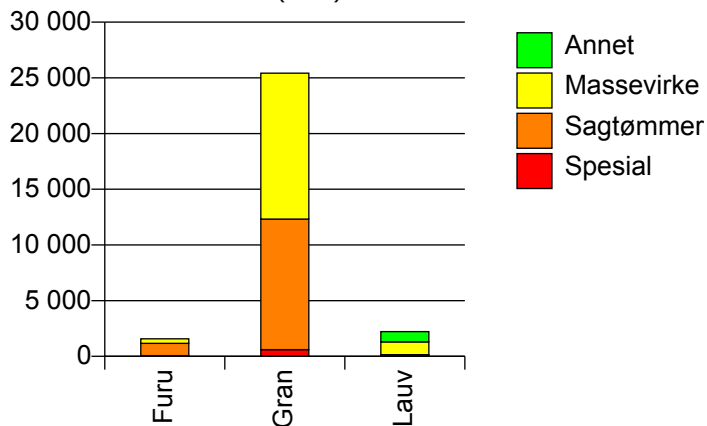


719 ANDEBU

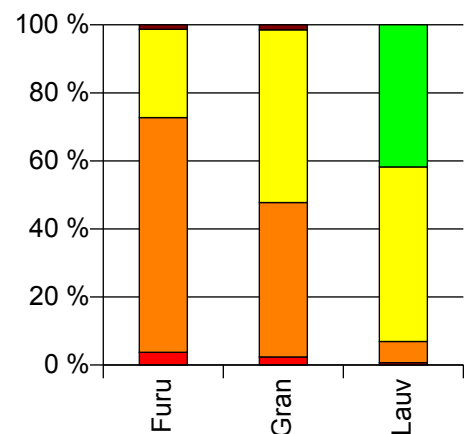
Volum 2009 (kbm)

	Spesial	Sagtømmer	Massevirke	Annet	Vrak	Sum:
Furu	60	1 104	415		21	1 600
Gran	607	11 720	13 089		383	25 799
Lauv	15	139	1 142	930	0	2 226
Sum:	682	12 963	14 646	930	404	29 625

Volum (kbm)



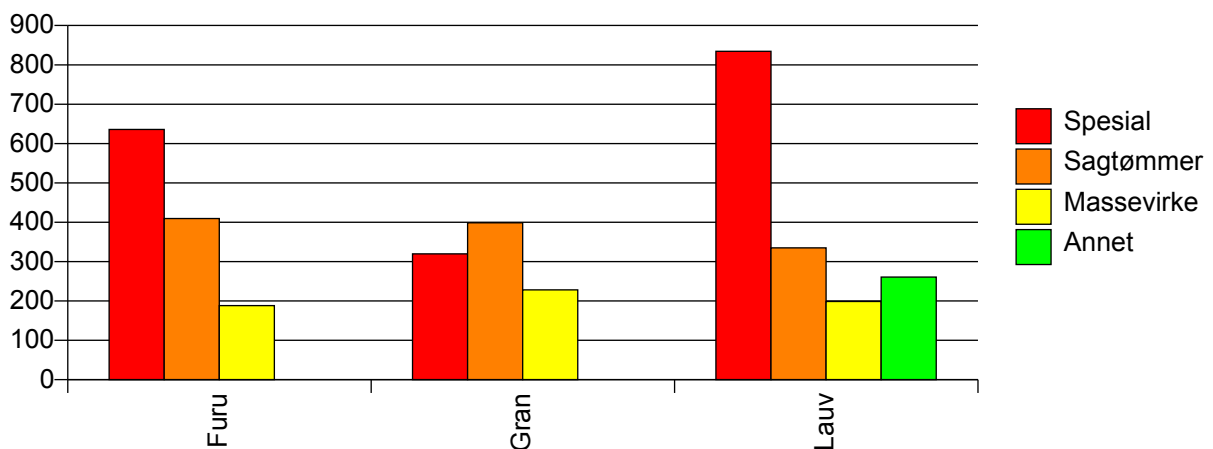
Volum (prosentfordelt)



Gjennomsnittspris 2009 (kr/kbm)

	Spesial	Sagtømmer	Massevirke	Annet	Vrak	Snitt
Furu	636	410	188		0	355
Gran	320	399	228		0	304
Lauv	834	335	199	261	#DIV/0	237
Snitt	359	399	225	261	0	302

Gjennomsnittspris (kr/kbm)

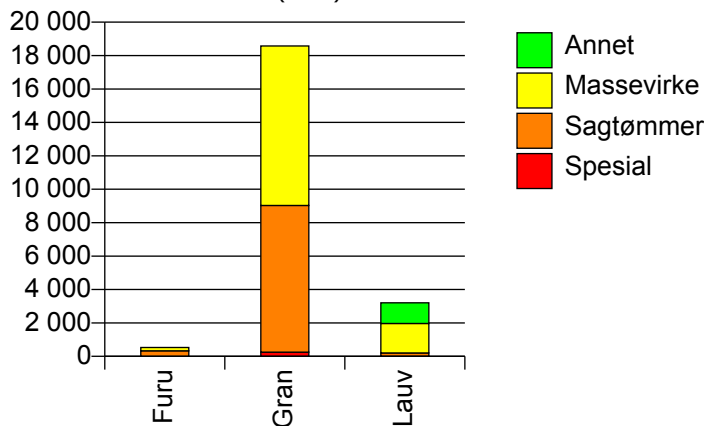


720 STOKKE

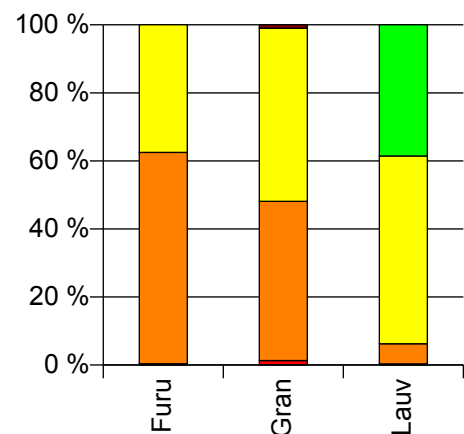
Volum 2009 (kbm)

	Spesial	Sagtømmer	Massevirke	Annet	Vrak	Sum:
Furu	2	330	199		0	531
Gran	248	8 782	9 549		191	18 770
Lauv	11	190	1 769	1 236		3 206
Sum:	261	9 302	11 517	1 236	191	22 507

Volum (kbm)



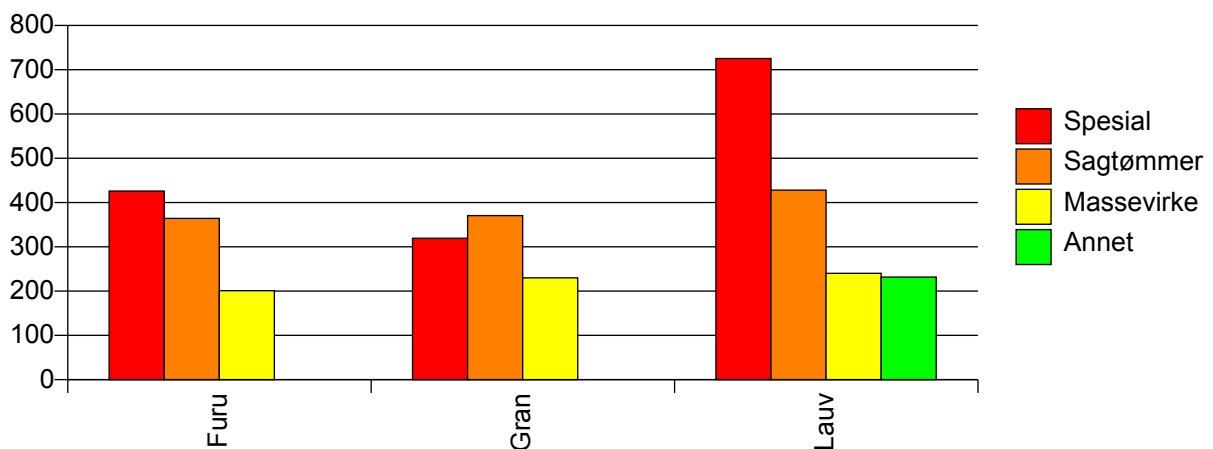
Volum (prosentfordelt)



Gjennomsnittspris 2009 (kr/kbm)

	Spesial	Sagtømmer	Massevirke	Annet	Vrak	Snitt
Furu	426	364	201		#DIV/0	303
Gran	319	371	230		0	295
Lauv	726	428	240	232		250
Snitt	337	372	231	232	0	288

Gjennomsnittspris (kr/kbm)

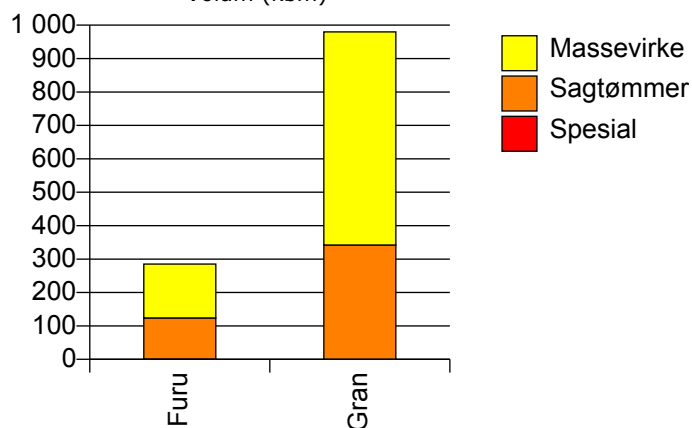


722 NØTTERØY

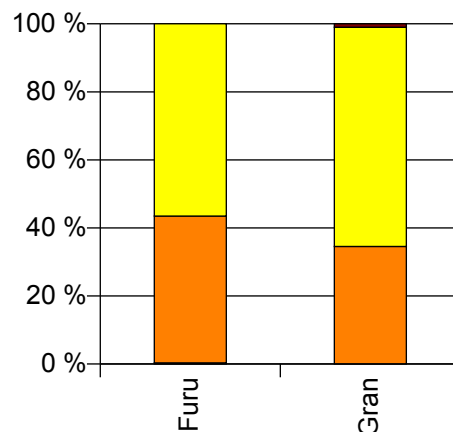
Volum 2009 (kbm)

	Spesial	Sagtømmer	Massevirke	Vrak	Sum:
Furu	1	123	161		285
Gran		342	638	10	990
Sum:	1	465	799	10	1 275

Volum (kbm)



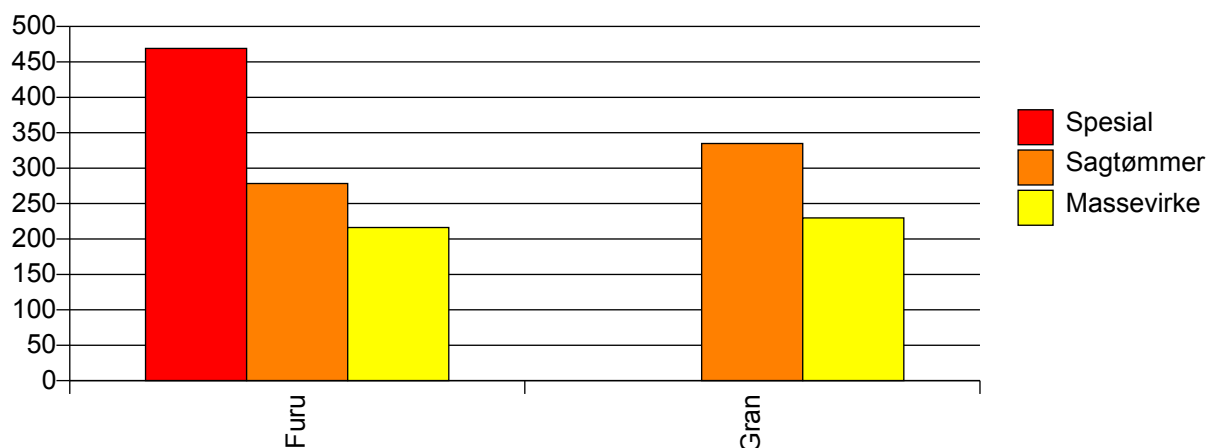
Volum (prosentfordelt)



Gjennomsnittspris 2009 (kr/kbm)

	Spesial	Sagtømmer	Massevirke	Vrak	Snitt
Furu	469	278	216		244
Gran		335	230	0	264
Snitt	469	320	227	0	259

Gjennomsnittspris (kr/kbm)

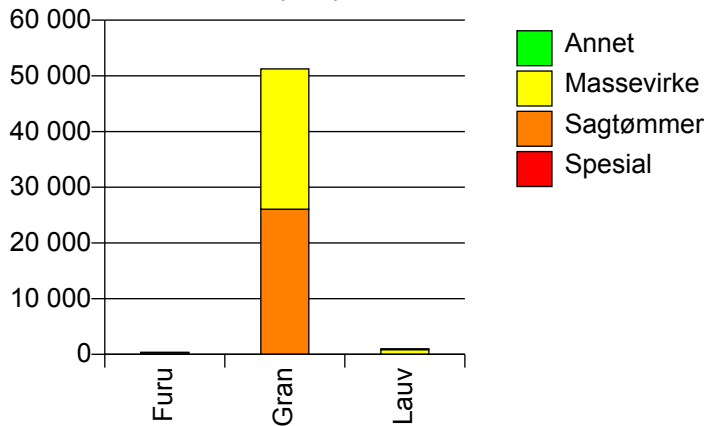


728 LARDAL

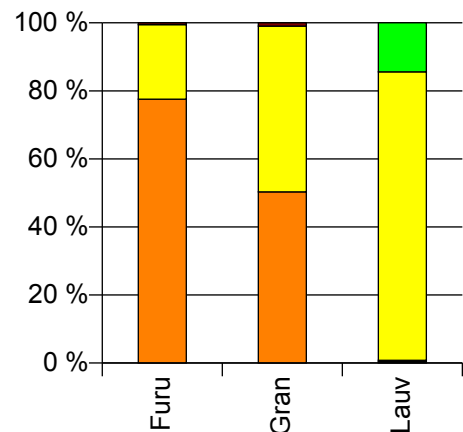
Volum 2009 (kbm)

	Spesial	Sagtømmer	Massevirke	Annet	Vrak	Sum:
Furu		290	82		2	374
Gran		26 051	25 204		506	51 761
Lauv	4	4	842	143		993
Sum:	4	26 345	26 128	143	508	53 128

Volum (kbm)



Volum (prosentfordelt)



Gjennomsnittspris 2009 (kr/kbm)

	Spesial	Sagtømmer	Massevirke	Annet	Vrak	Snitt
Furu		391	197		0	347
Gran		382	241		0	309
Lauv	594	324	176	197		181
Snitt	594	382	239	197	0	307

Gjennomsnittspris (kr/kbm)

