

Virkestatistikk fra

SKOG-DATA AS

Vest-Agder m/kommuner

Dataene i rapporten er hentet fra databasen som inneholder virkesdata med tilhørende innbetalinger av skogavgift. Rapporten er laget med Business Objects, som er sluttbrukerverktøyet i Skog-Data sine nye datavarehus-løsninger. Business Objects er ett meget sterkt rapportverktøy som kan presentere store mengder data effektivt.

Rapportene kan lastes ned fra www.skogdata.no/statistikk

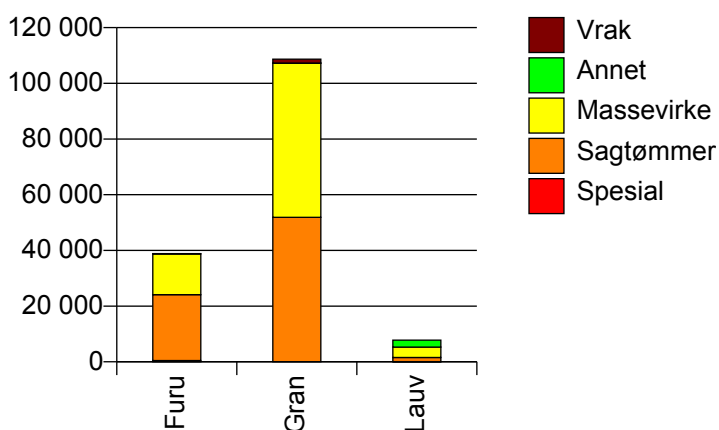
For mer informasjon, kontakt: tabh@skogdata.no

Vest-Agder

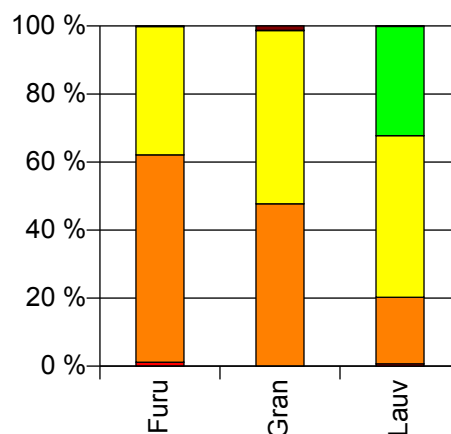
Volum 2009

	Spesial	Sagtømmer	Massevirke	Annet	Vrak	Sum:
Furu	451	23 682	14 652		66	38 851
Gran	3	51 858	55 365	67	1 393	108 686
Lauv	54	1 520	3 697	2 497	12	7 780
Sum:	508	77 060	73 714	2 564	1 471	155 317

Volum (kkm)



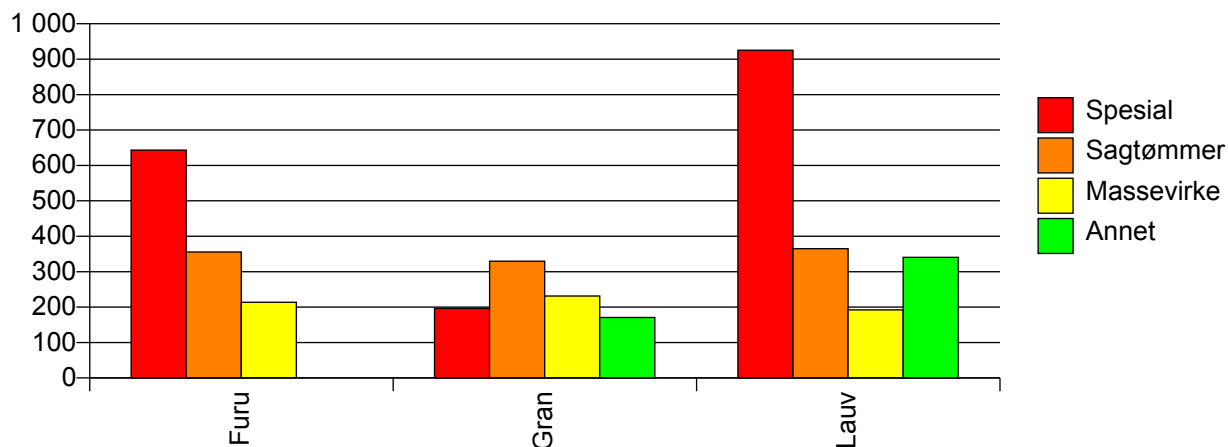
Volum (prosentfordelt)



Gjennomsnittspris 2009 (kr/kbm)

	Spesial	Sagtømmer	Massevirke	Annet	Vrak	Snitt:
Furu	643	355	214		0	305
Gran	196	330	231	171	0	275
Lauv	925	365	192	340	0	278
Snitt:	671	338	226	336	0	283

Gjennomsnittspris (kr/kbm)

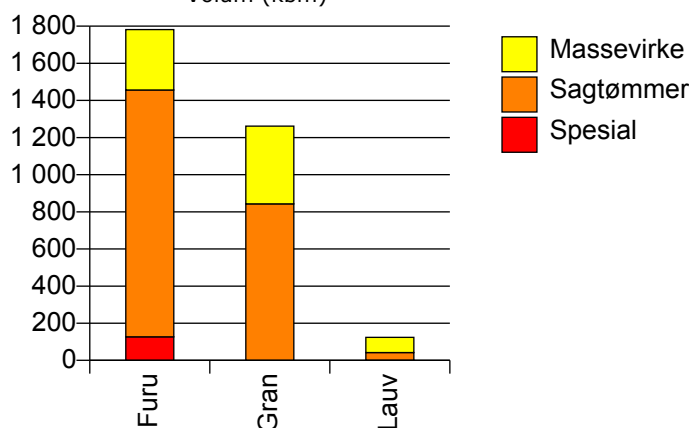


1026 ÅSERAL

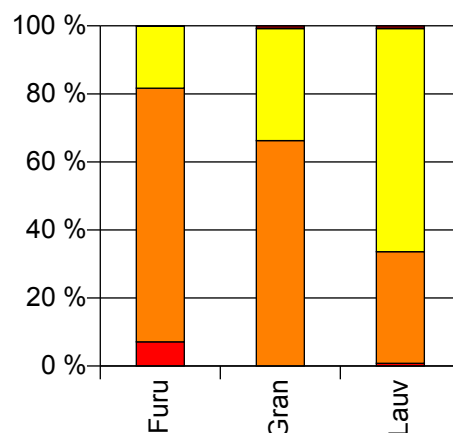
Volum 2009 (kbm)

	Spesial	Sagtømmer	Massevirke	Vrak	Sum:
Furu	127	1 329	326	1	1 783
Gran		843	419	10	1 272
Lauv	1	41	82	1	125
Sum:	128	2 213	827	12	3 180

Volum (kbm)



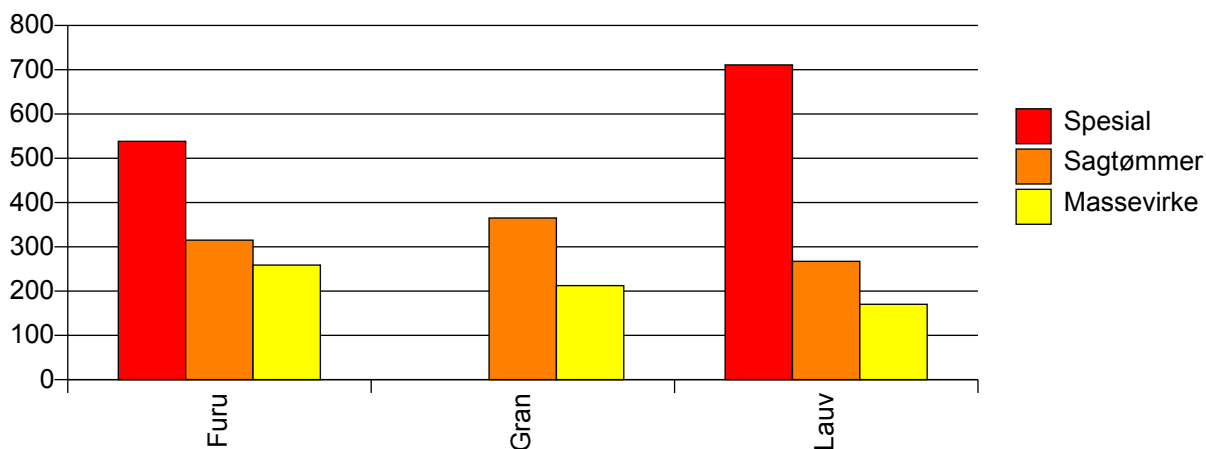
Volum (prosentfordelt)



Gjennomsnittspris 2009 (kr/kbm)

	Spesial	Sagtømmer	Massevirke	Vrak	Snitt
Furu	538	315	259	0	321
Gran		365	213	0	312
Lauv	711	267	170	0	205
Snitt	540	333	227	0	313

Gjennomsnittspris (kr/kbm)

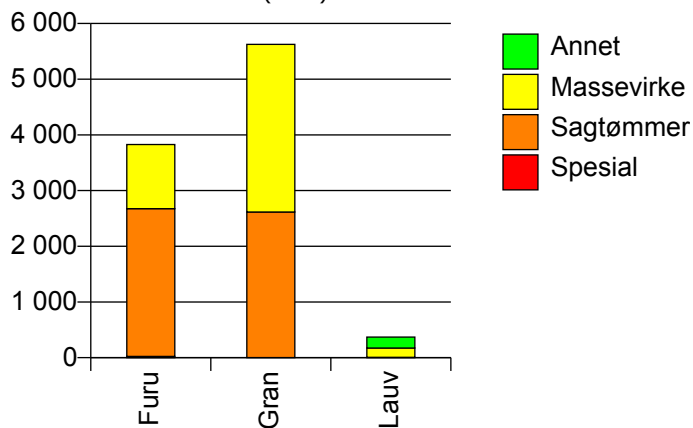


1027 AUDNEDAL

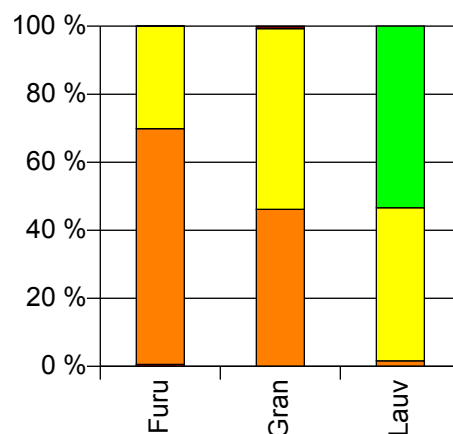
Volum 2009 (kbm)

	Spesial	Sagtømmer	Massevirke	Annet	Vrak	Sum:
Furu	22	2 653	1 152		1	3 828
Gran		2 615	3 011		40	5 666
Lauv	0	6	167	198		371
Sum:	22	5 274	4 330	198	41	9 865

Volum (kbm)



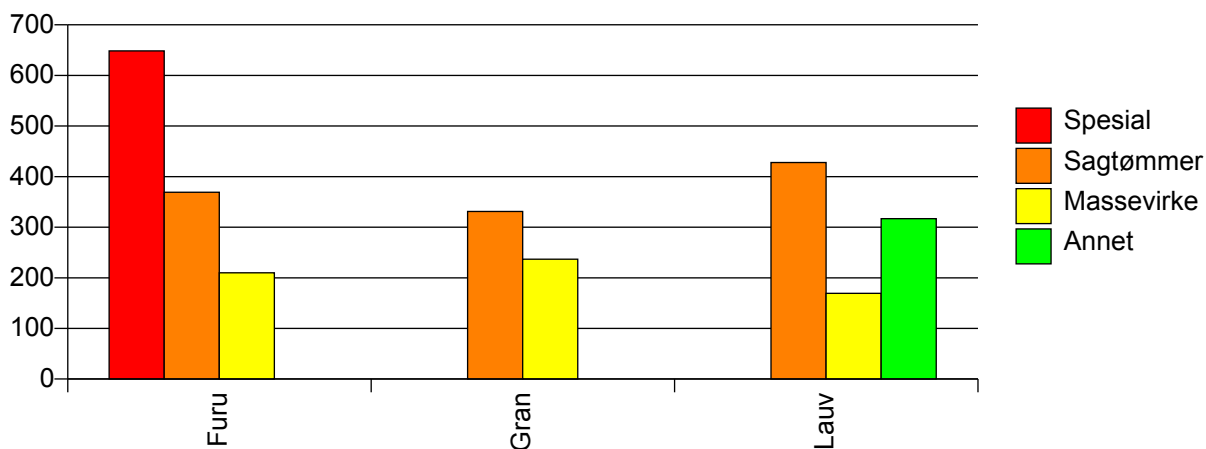
Volum (prosentfordelt)



Gjennomsnittspris 2009 (kr/kbm)

	Spesial	Sagtømmer	Massevirke	Annet	Vrak	Snitt
Furu	649	369	210		0	323
Gran		331	237		0	279
Lauv	#DIV/0	428	169	317		253
Snitt	662	350	227	317	0	295

Gjennomsnittspris (kr/kbm)

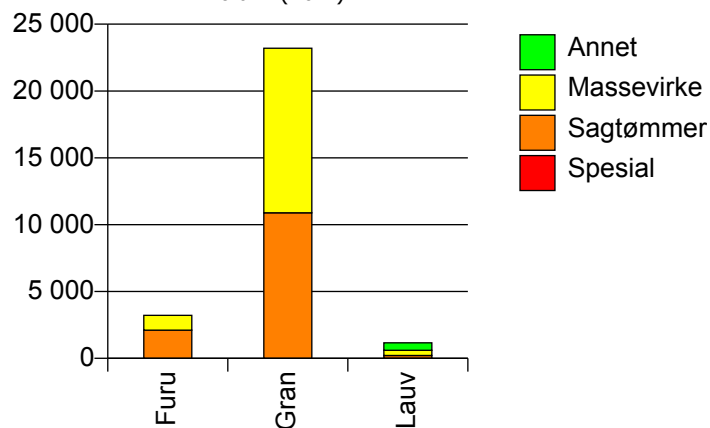


1029 LINDESNES

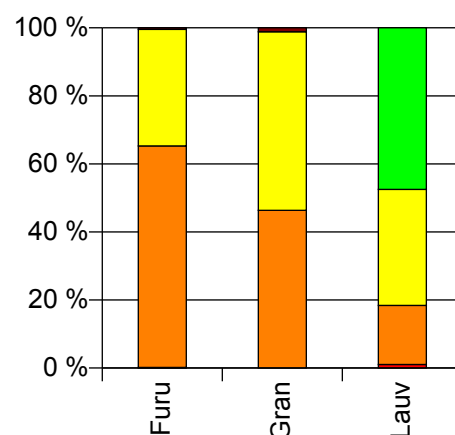
Volum 2009 (kbm)

	Spesial	Sagtømmer	Massevirke	Annet	Vrak	Sum:
Furu	6	2 104	1 107		14	3 231
Gran		10 884	12 319		269	23 472
Lauv	12	201	395	550		1 158
Sum:	18	13 189	13 821	550	283	27 861

Volum (kbm)



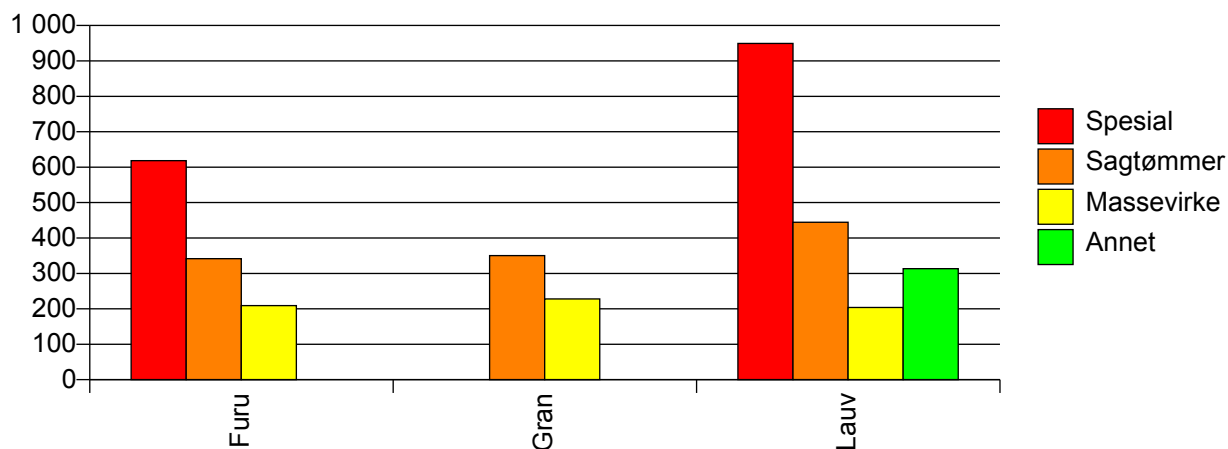
Volum (prosentfordelt)



Gjennomsnittspris 2009 (kr/kbm)

	Spesial	Sagtømmer	Massevirke	Annet	Vrak	Snitt
Furu	618	342	209		0	295
Gran		350	228		0	282
Lauv	949	444	204	313		305
Snitt	839	350	226	313	0	285

Gjennomsnittspris (kr/kbm)

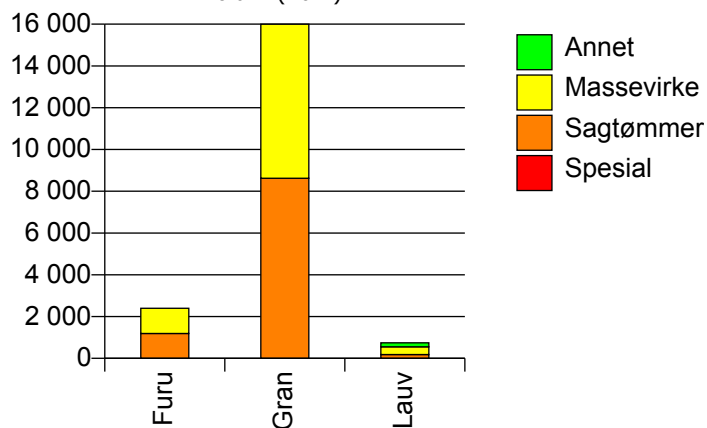


1032 LYNGDAL

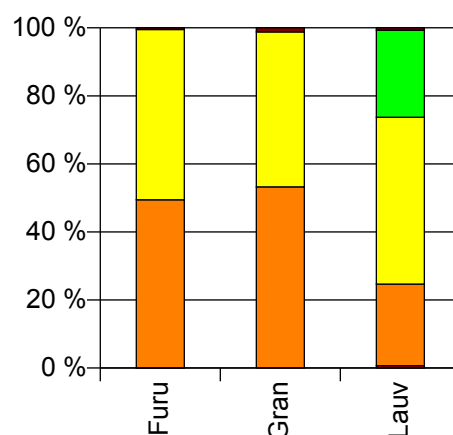
Volum 2009 (kbm)

	Spesial	Sagtømmer	Massevirke	Annet	Vrak	Sum:
Furu	1	1 192	1 207		12	2 412
Gran	3	8 618	7 377		195	16 193
Lauv	5	180	368	192	5	750
Sum:	9	9 990	8 952	192	212	19 355

Volum (kbm)



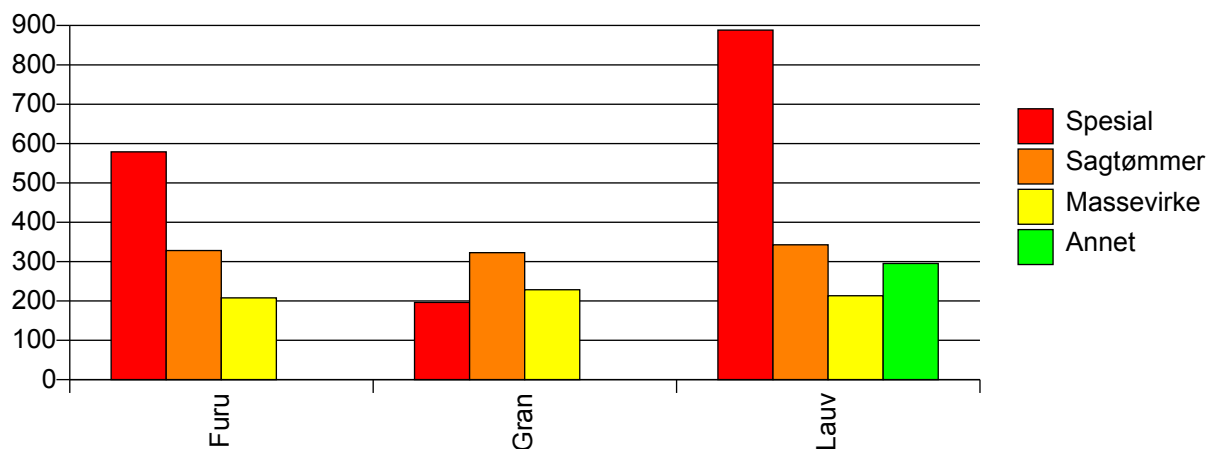
Volum (prosentfordelt)



Gjennomsnittspris 2009 (kr/kbm)

	Spesial	Sagtømmer	Massevirke	Annet	Vrak	Snitt
Furu	579	328	208		0	266
Gran	196	323	228		0	276
Lauv	888	343	213	295	0	268
Snitt	623	324	225	295	0	274

Gjennomsnittspris (kr/kbm)

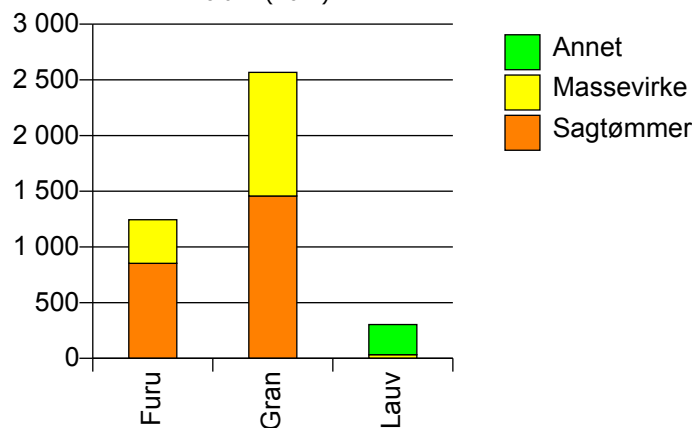


1034 HÆGEBOSTAD

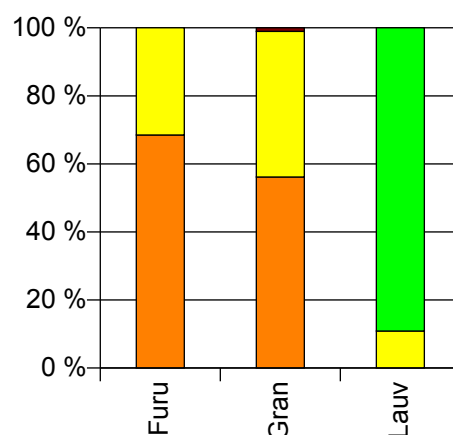
Volum 2009 (kbm)

	Sagtømmer	Massevirke	Annet	Vrak	Sum:
Furu	853	392			1 245
Gran	1 457	1 110		27	2 594
Lauv		33	270		303
Sum:	2 310	1 535	270	27	4 142

Volum (kbm)



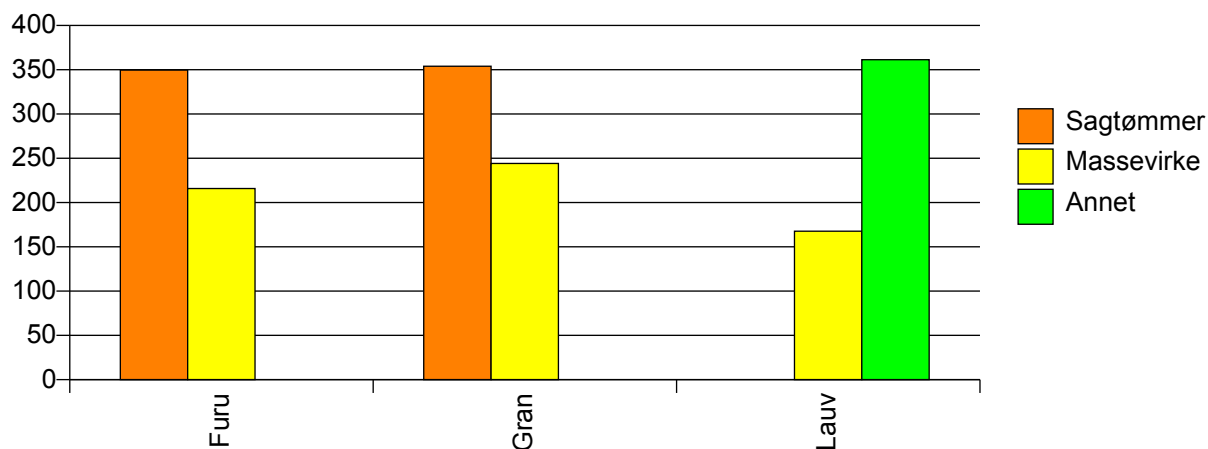
Volum (prosentfordelt)



Gjennomsnittspris 2009 (kr/kbm)

	Sagtømmer	Massevirke	Annet	Vrak	Snitt
Furu	350	216			307
Gran	354	244		0	303
Lauv		168	361		340
Snitt	352	235	361	0	307

Gjennomsnittspris (kr/kbm)

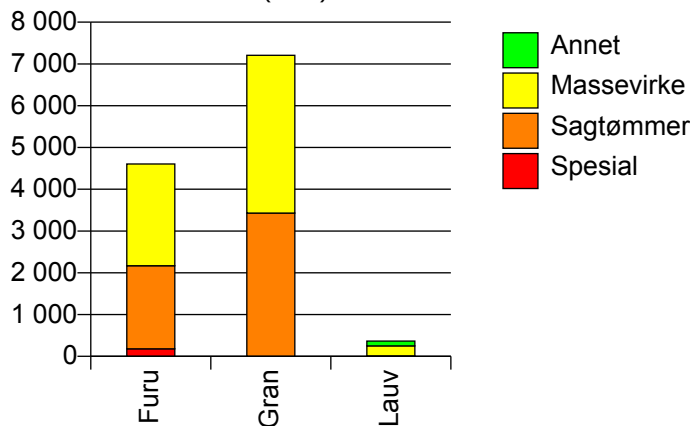


1037 KVINESDAL

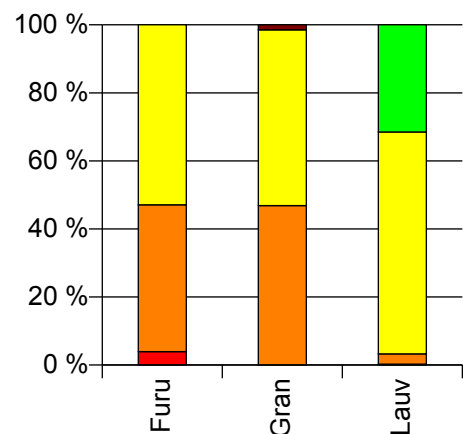
Volum 2009 (kbm)

	Spesial	Sagtømmer	Massevirke	Annet	Vrak	Sum:
Furu	181	1 988	2 436			4 605
Gran		3 429	3 779		107	7 315
Lauv	1	11	238	115		365
Sum:	182	5 428	6 453	115	107	12 285

Volum (kbm)



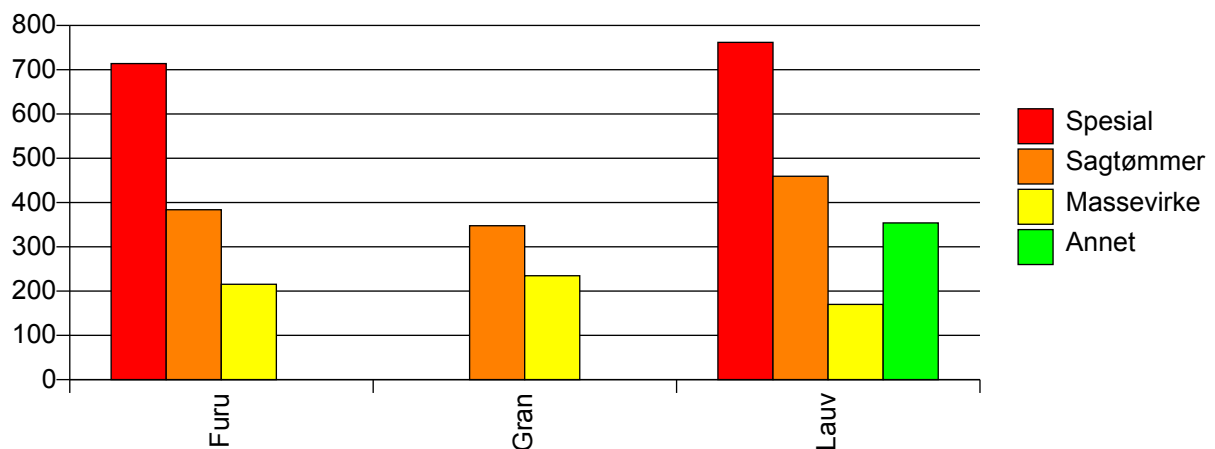
Volum (prosentfordelt)



Gjennomsnittspris 2009 (kr/kbm)

	Spesial	Sagtømmer	Massevirke	Annet	Vrak	Snitt
Furu	714	384	216			308
Gran		348	235		0	284
Lauv	762	460	170	354		238
Snitt	714	361	225	354	0	292

Gjennomsnittspris (kr/kbm)

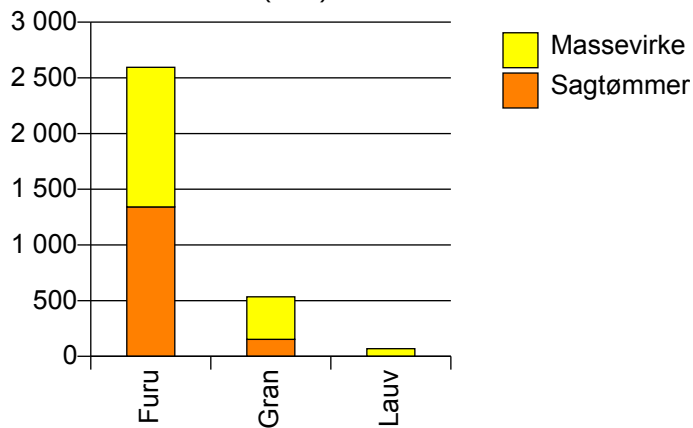


1046 SIRDAL

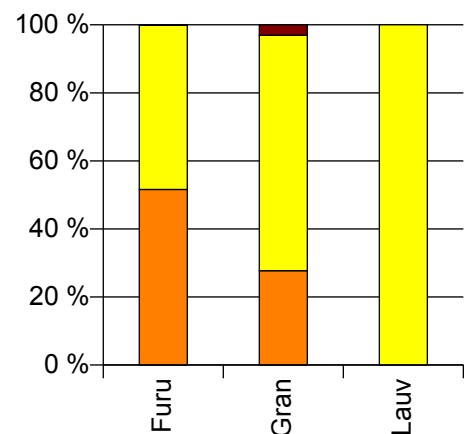
Volum 2009 (kbm)

	Sagtømmer	Massevirke	Vrak	Sum:
Furu	1 341	1 254	3	2 598
Gran	153	382	17	552
Lauv		69		69
Sum:	1 494	1 705	20	3 219

Volum (kbm)



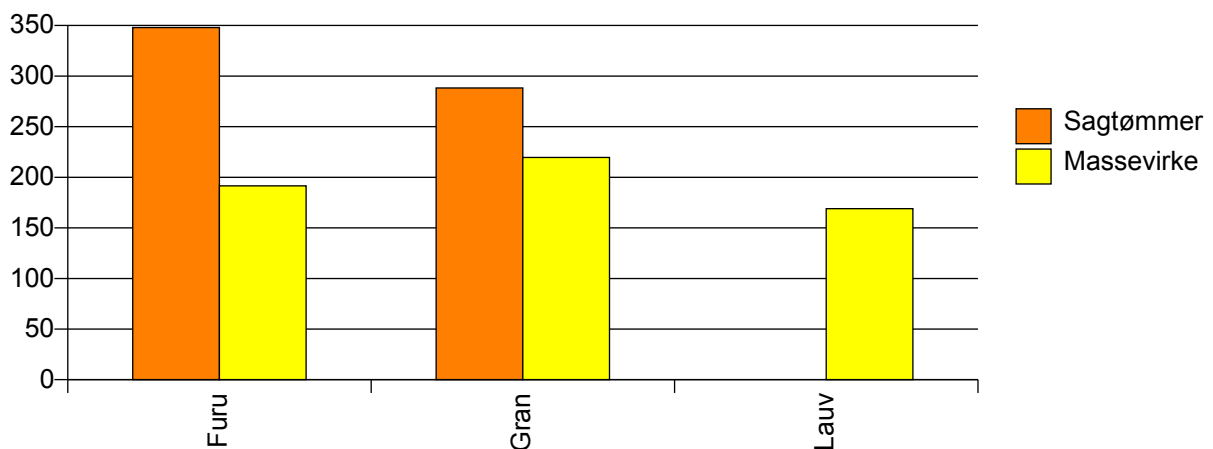
Volum (prosentfordelt)



Gjennomsnittspris 2009 (kr/kbm)

	Sagtømmer	Massevirke	Vrak	Snitt
Furu	348	192	0	272
Gran	288	220	0	232
Lauv		169		169
Snitt	342	197	0	263

Gjennomsnittspris (kr/kbm)

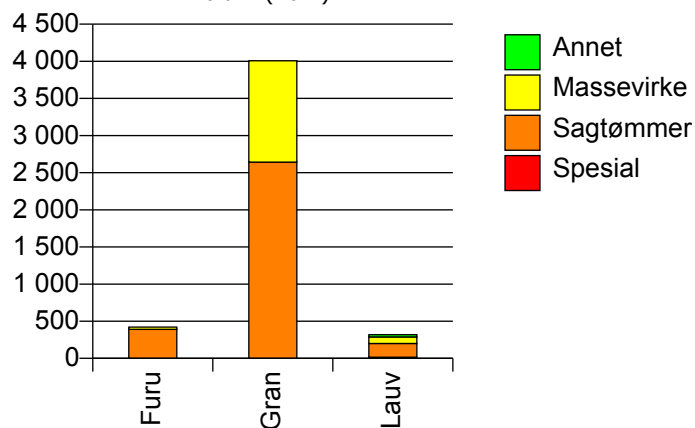


1001 KRISTIANSAND

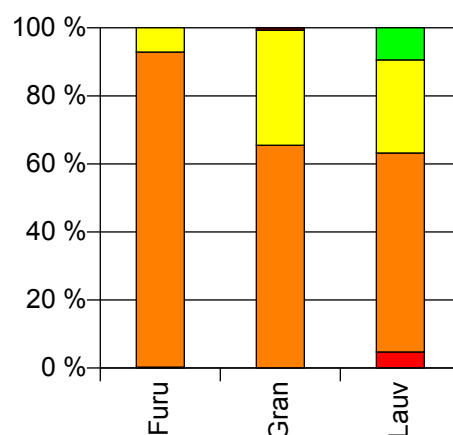
Volum 2009 (kbm)

	Spesial	Sagtømmer	Massevirke	Annet	Vrak	Sum:
Furu	1	390	30			421
Gran		2 643	1 364		28	4 035
Lauv	15	186	87	30		318
Sum:	16	3 219	1 481	30	28	4 774

Volum (kbm)



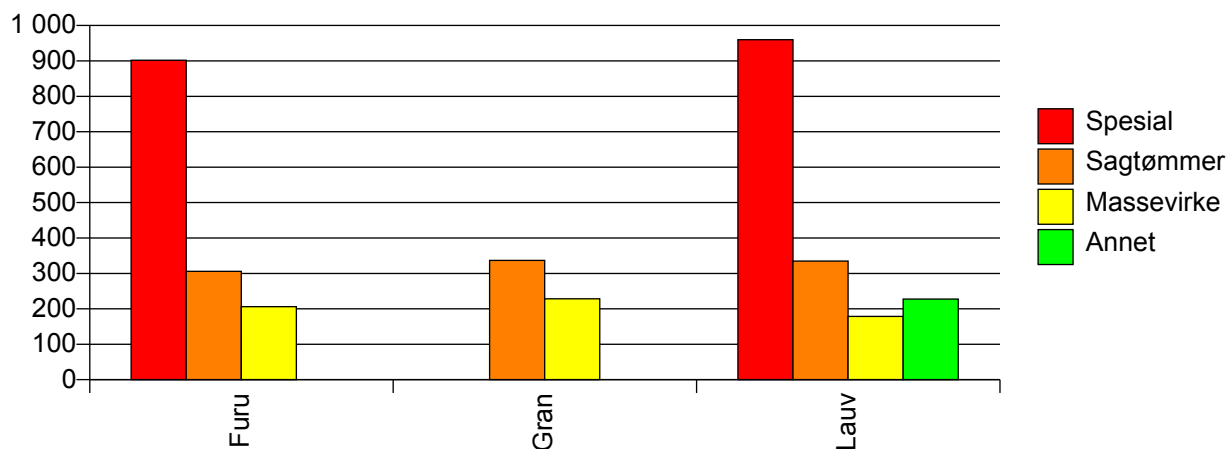
Volum (prosentfordelt)



Gjennomsnittspris 2009 (kr/kbm)

	Spesial	Sagtømmer	Massevirke	Annet	Vrak	Snitt
Furu	902	306	206			300
Gran		337	228		0	298
Lauv	960	335	179	228		312
Snitt	956	333	225	228	0	299

Gjennomsnittspris (kr/kbm)

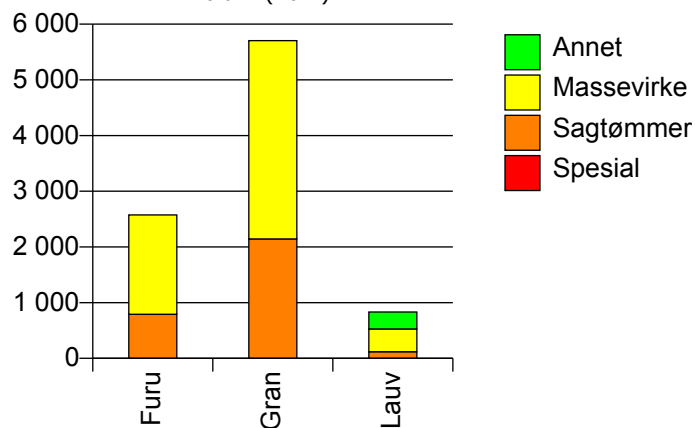


1002 MANDAL

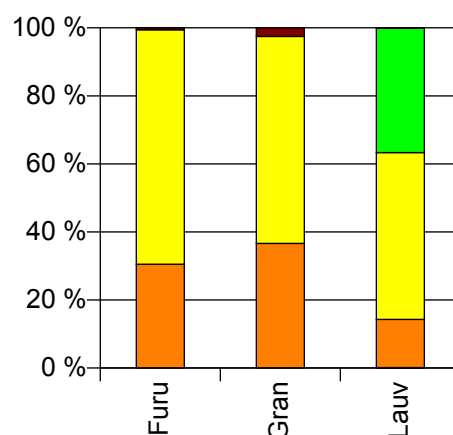
Volum 2009 (kbm)

	Spesial	Sagtømmer	Massevirke	Annet	Vrak	Sum:
Furu		791	1 785		15	2 591
Gran		2 145	3 559		149	5 853
Lauv	1	118	408	304	1	832
Sum:	1	3 054	5 752	304	165	9 276

Volum (kbm)



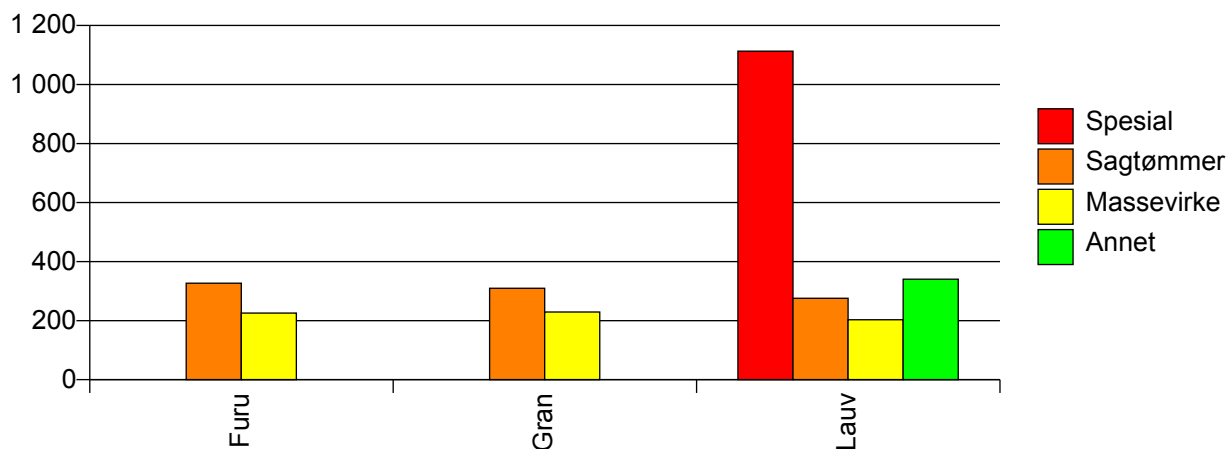
Volum (prosentfordelt)



Gjennomsnittspris 2009 (kr/kbm)

	Spesial	Sagtømmer	Massevirke	Annet	Vrak	Snitt
Furu		327	226		0	255
Gran		310	229		0	253
Lauv	1 113	276	203	340	0	264
Snitt	1 113	313	226	340	0	255

Gjennomsnittspris (kr/kbm)

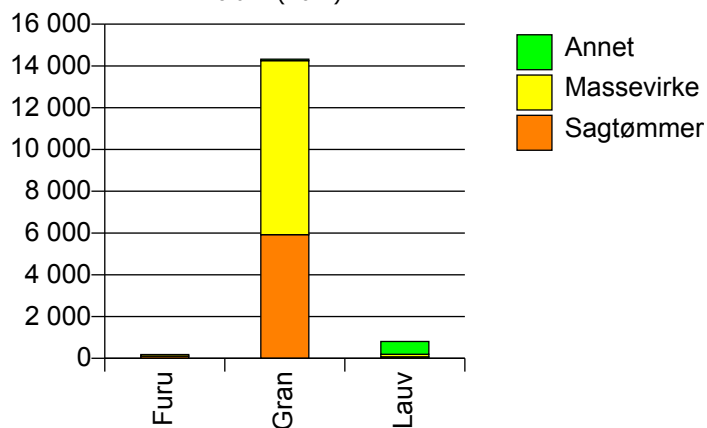


1003 FARSUND

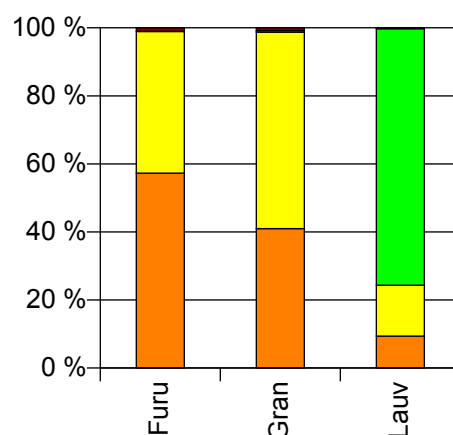
Volum 2009 (kbm)

	Sagtømmer	Massevirke	Annet	Vrak	Sum:
Furu	106	77		2	185
Gran	5 919	8 335	67	115	14 436
Lauv	76	121	609	2	808
Sum:	6 101	8 533	676	119	15 429

Volum (kbm)



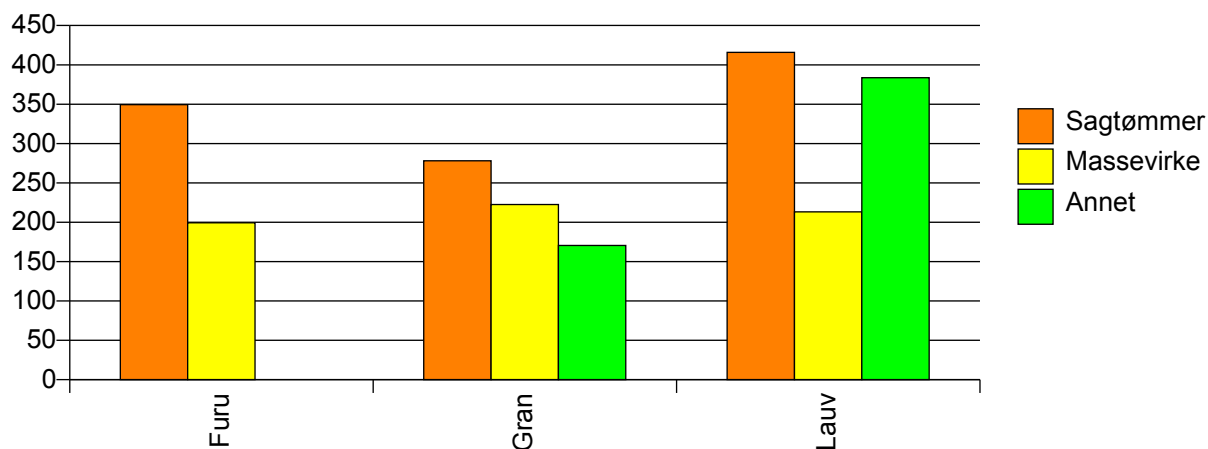
Volum (prosentfordelt)



Gjennomsnittspris 2009 (kr/kbm)

	Sagtømmer	Massevirke	Annet	Vrak	Snitt
Furu	349	199		0	283
Gran	278	223	171	0	243
Lauv	416	213	384	0	360
Snitt	281	222	363	0	250

Gjennomsnittspris (kr/kbm)

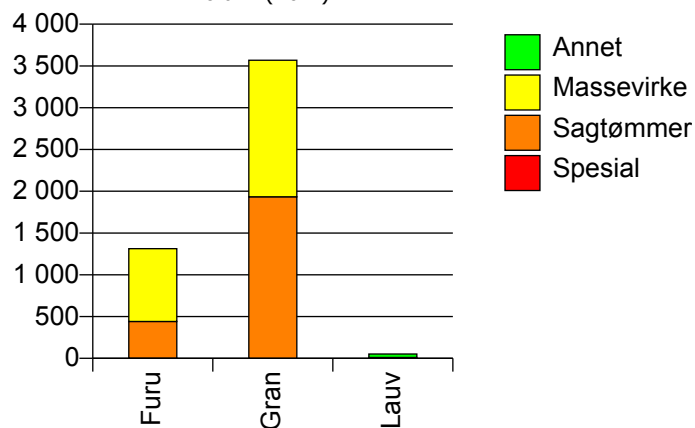


1004 FLEKKEFJORD

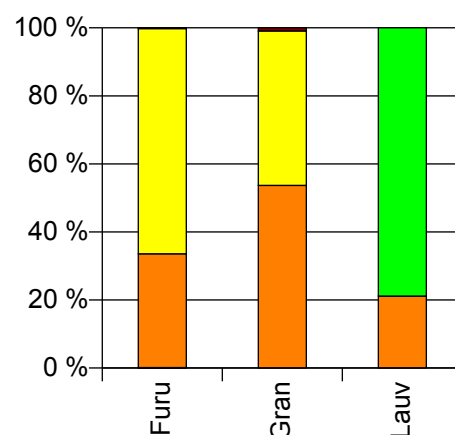
Volum 2009 (kbm)

	Spesial	Sagtømmer	Massevirke	Annet	Vrak	Sum:
Furu	2	440	871		3	1 316
Gran		1 933	1 635		33	3 601
Lauv		11		41		52
Sum:	2	2 384	2 506	41	36	4 969

Volum (kbm)



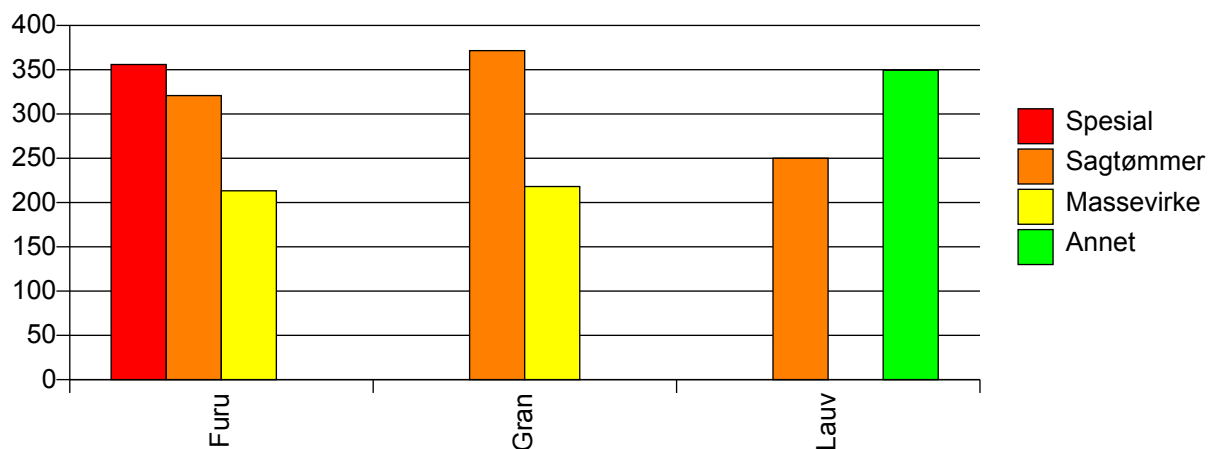
Volum (prosentfordelt)



Gjennomsnittspris 2009 (kr/kbm)

	Spesial	Sagtømmer	Massevirke	Annet	Vrak	Snitt
Furu	356	321	213		0	249
Gran		372	218		0	299
Lauv		250		350		328
Snitt	356	362	217	350	0	286

Gjennomsnittspris (kr/kbm)

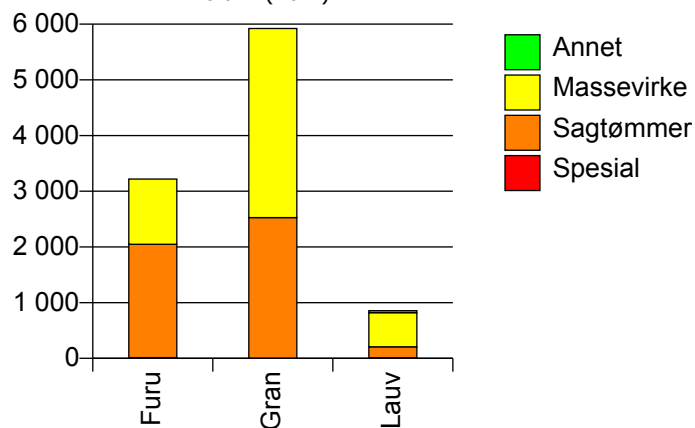


1014 VENNESLA

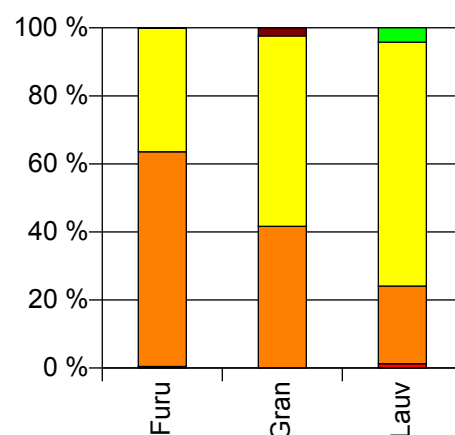
Volum 2009 (kbm)

	Spesial	Sagtømmer	Massevirke	Annet	Vrak	Sum:
Furu	14	2 035	1 170		4	3 223
Gran		2 526	3 397		143	6 066
Lauv	11	195	613	36		855
Sum:	25	4 756	5 180	36	147	10 144

Volum (kbm)



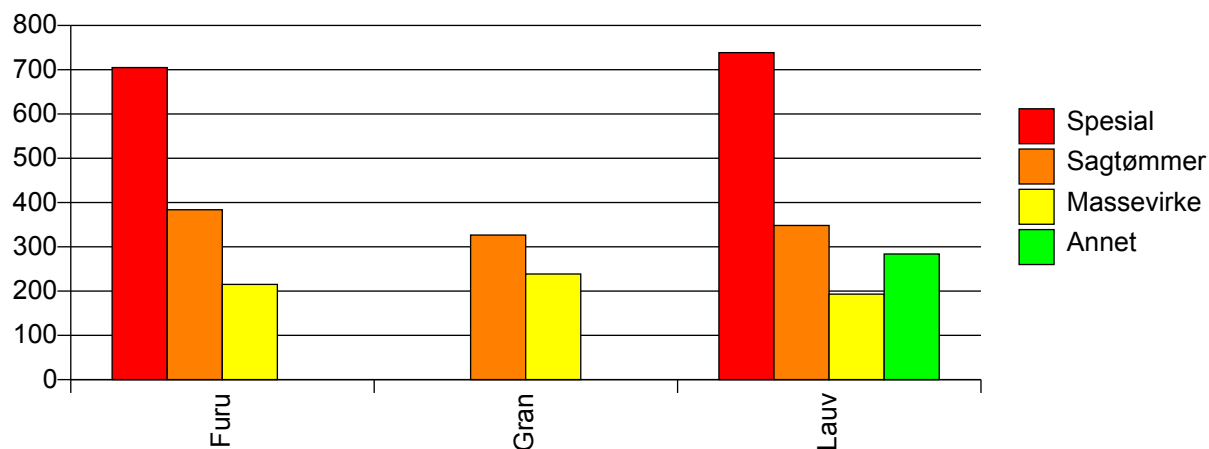
Volum (prosentfordelt)



Gjennomsnittspris 2009 (kr/kbm)

	Spesial	Sagtømmer	Massevirke	Annet	Vrak	Snitt
Furu	705	384	215		0	324
Gran		327	239		0	270
Lauv	739	348	193	284		239
Snitt	720	352	228	284	0	284

Gjennomsnittspris (kr/kbm)

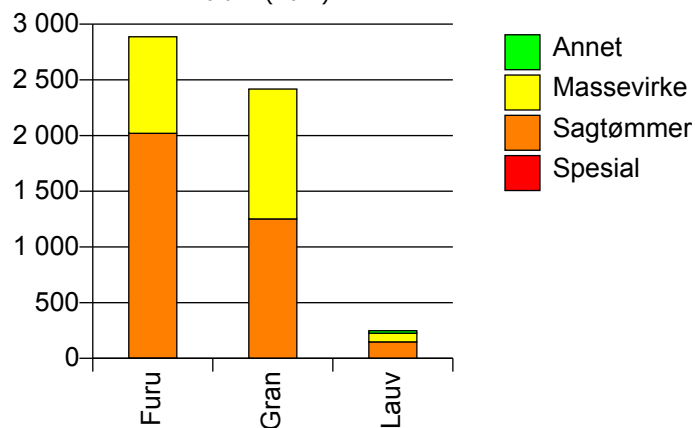


1017 SONGDALEN

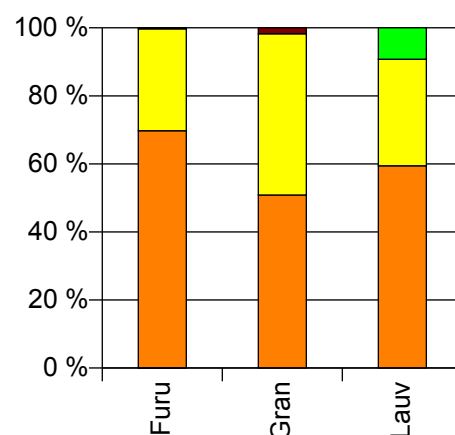
Volum 2009 (kbm)

	Spesial	Sagtømmer	Massevirke	Annet	Vrak	Sum:
Furu	3	2 017	867		9	2 896
Gran		1 251	1 166		43	2 460
Lauv		148	78	23		249
Sum:	3	3 416	2 111	23	52	5 605

Volum (kbm)



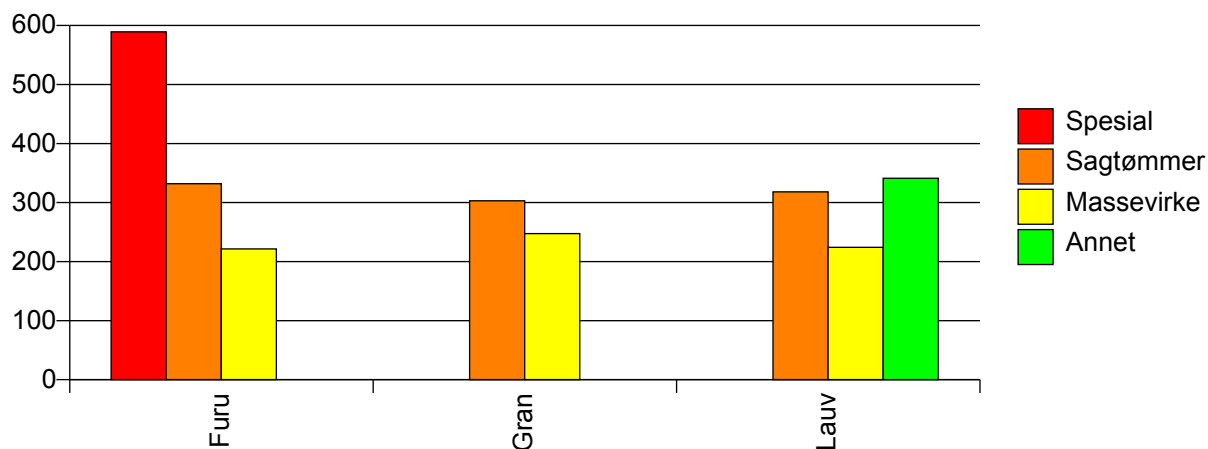
Volum (prosentfordelt)



Gjennomsnittspris 2009 (kr/kbm)

	Spesial	Sagtømmer	Massevirke	Annet	Vrak	Snitt
Furu	589	332	222		0	298
Gran		303	248		0	271
Lauv		318	224	341		291
Snitt	589	321	236	341	0	286

Gjennomsnittspris (kr/kbm)

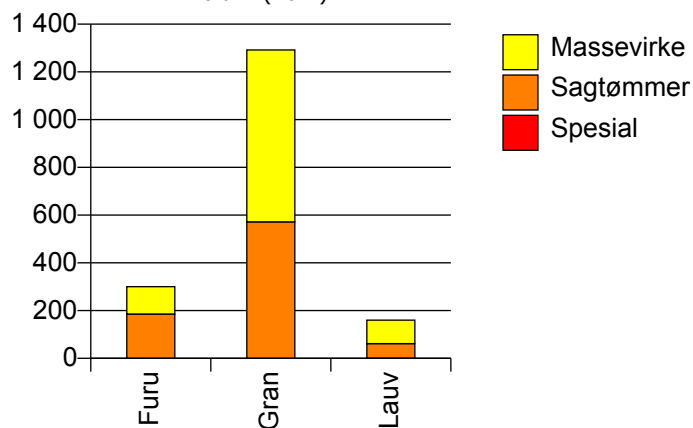


1018 SØGNE

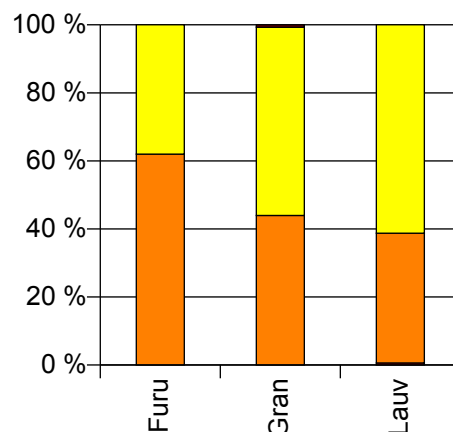
Volum 2009 (kbm)

	Spesial	Sagtømmer	Massevirke	Vrak	Sum:
Furu		186	114		300
Gran		572	720	9	1 301
Lauv	1	61	98		160
Sum:	1	819	932	9	1 761

Volum (kbm)



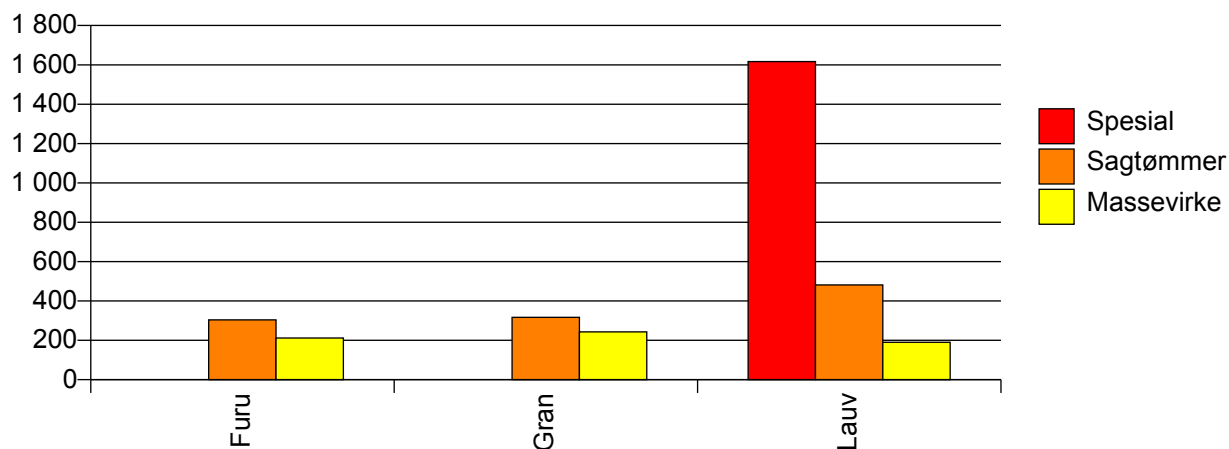
Volum (prosentfordelt)



Gjennomsnittspris 2009 (kr/kbm)

	Spesial	Sagtømmer	Massevirke	Vrak	Snitt
Furu		304	212		269
Gran		317	243	0	274
Lauv	1 617	481	190		310
Snitt	1 617	326	234	0	276

Gjennomsnittspris (kr/kbm)

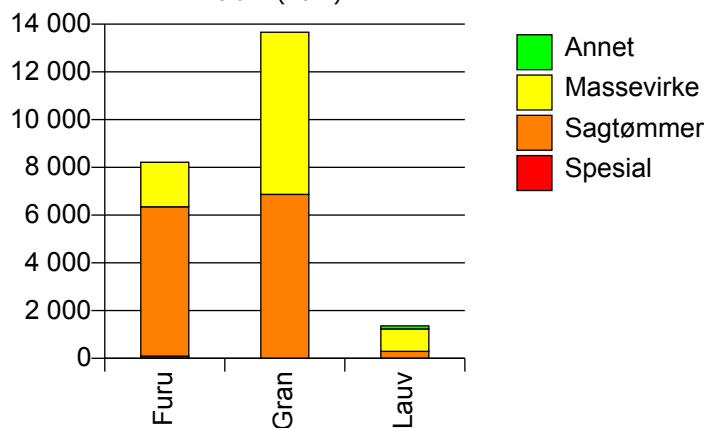


1021 MARNARDAL

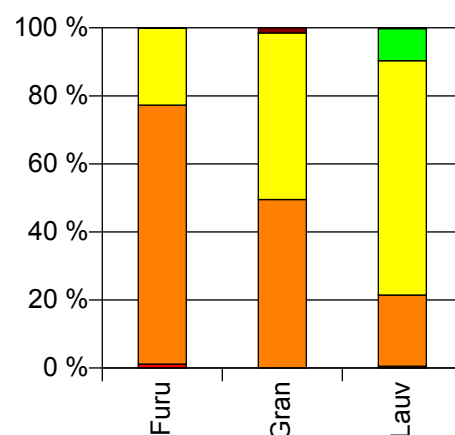
Volum 2009 (kbm)

	Spesial	Sagtømmer	Massevirke	Annet	Vrak	Sum:
Furu	94	6 257	1 864		2	8 217
Gran		6 870	6 792		208	13 870
Lauv	7	286	940	129	3	1 365
Sum:	101	13 413	9 596	129	213	23 452

Volum (kbm)



Volum (prosentfordelt)



Gjennomsnittspris 2009 (kr/kbm)

	Spesial	Sagtømmer	Massevirke	Annet	Vrak	Snitt
Furu	646	371	212		0	338
Gran		331	243		0	283
Lauv	1 015	391	183	337	0	245
Snitt	671	351	231	337	0	300

Gjennomsnittspris (kr/kbm)

