

Virkestatistikk fra

SKOG-DATA AS

Nord-Trøndelag m/kommuner

Dataene i rapporten er hentet fra databasen som inneholder virkesdata med tilhørende innbetalinger av skogavgift. Rapporten er laget med Business Objects, som er sluttbrukerverktøyet i Skog-Data sine nye datavarehus-løsninger. Business Objects er ett meget sterkt rapportverktøy som kan presentere store mengder data effektivt.

Rapportene kan lastes ned fra www.skogdata.no/statistikk

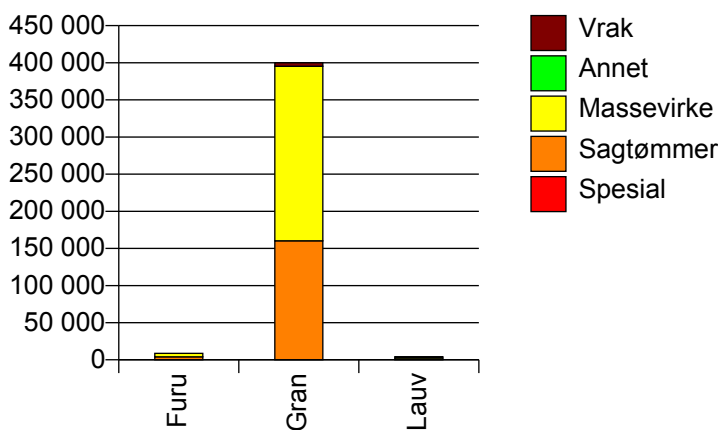
For mer informasjon, kontakt: tabh@skogdata.no

Nord-Trøndelag

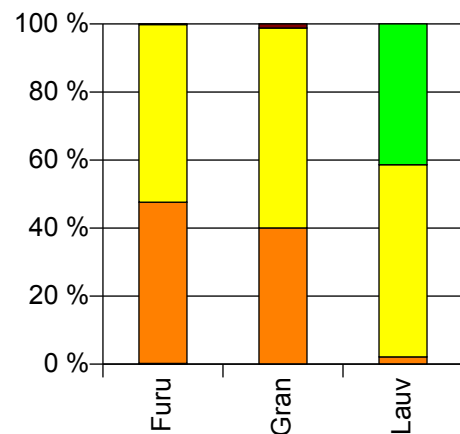
Volum 2009

	Spesial	Sagtømmer	Massevirke	Annet	Vrak	Sum:
Furu	18	4 101	4 515		16	8 650
Gran		160 227	235 055		4 793	400 075
Lauv		89	2 347	1 718		4 154
Sum:	18	164 417	241 917	1 718	4 809	412 879

Volum (kbm)



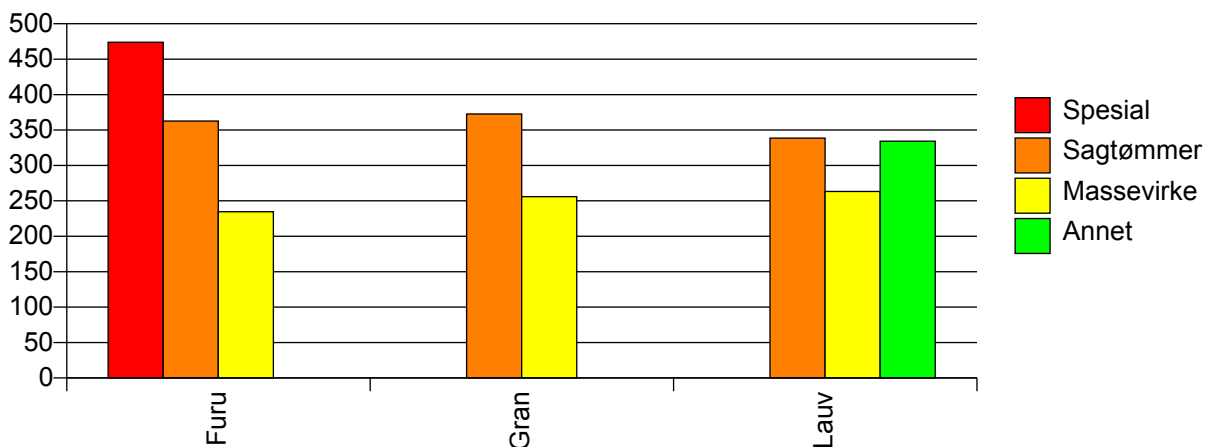
Volum (prosentfordelt)



Gjennomsnittspris 2009 (kr/kbm)

	Spesial	Sagtømmer	Massevirke	Annet	Vrak	Snitt:
Furu	474	363	235		0	295
Gran		373	256		0	300
Lauv		339	263	334		294
Snitt:	474	372	256	334	0	299

Gjennomsnittspris (kr/kbm)

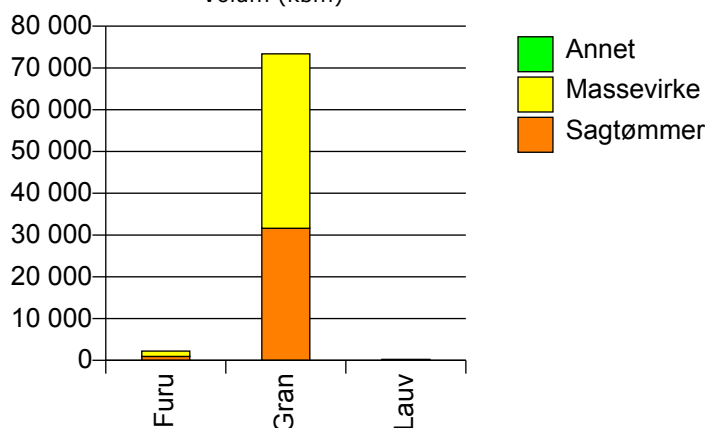


1702 STEINKJER

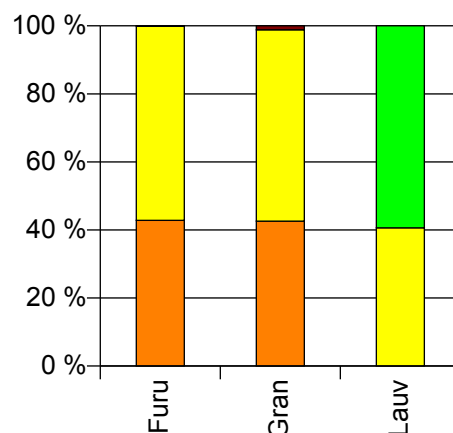
Volum 2009 (kbm)

	Sagtømmer	Massevirke	Annet	Vrak	Sum:
Furu	956	1 275		2	2 233
Gran	31 617	41 763		847	74 227
Lauv		91	133		224
Sum:	32 573	43 129	133	849	76 684

Volum (kbm)



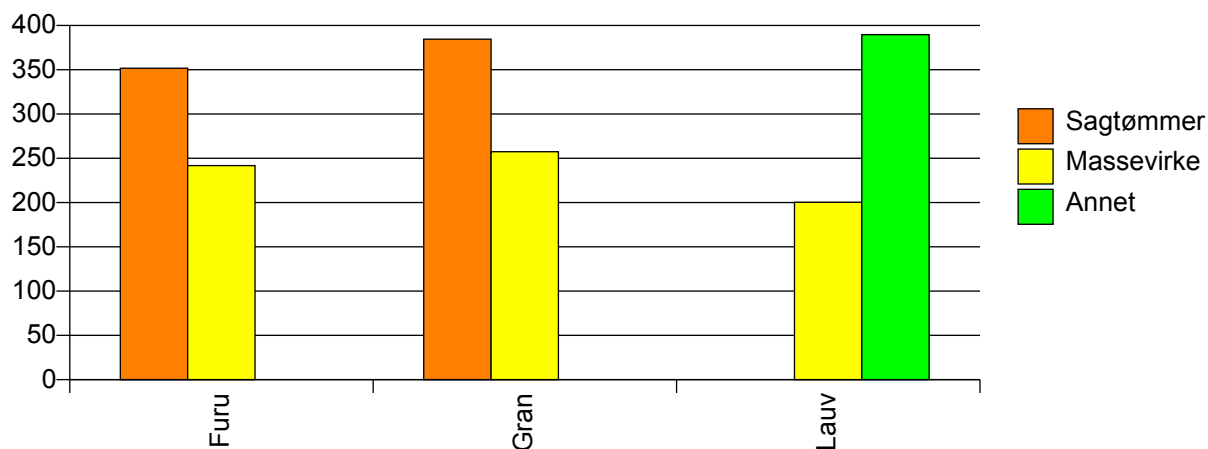
Volum (prosentfordelt)



Gjennomsnittspris 2009 (kr/kbm)

	Sagtømmer	Massevirke	Annet	Vrak	Snitt
Furu	352	242		0	289
Gran	385	257		0	309
Lauv		200	390		313
Snitt	384	257	390	0	308

Gjennomsnittspris (kr/kbm)

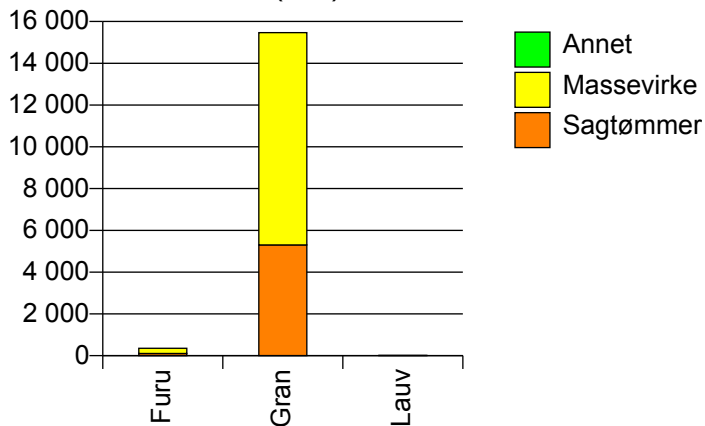


1703 NAMSOS

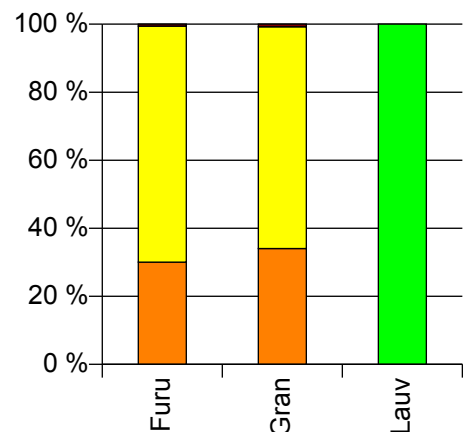
Volum 2009 (kbm)

	Sagtømmer	Massevirke	Annet	Vrak	Sum:
Furu	107	247		2	356
Gran	5 305	10 160		120	15 585
Lauv			19		19
Sum:	5 412	10 407	19	122	15 960

Volum (kbm)



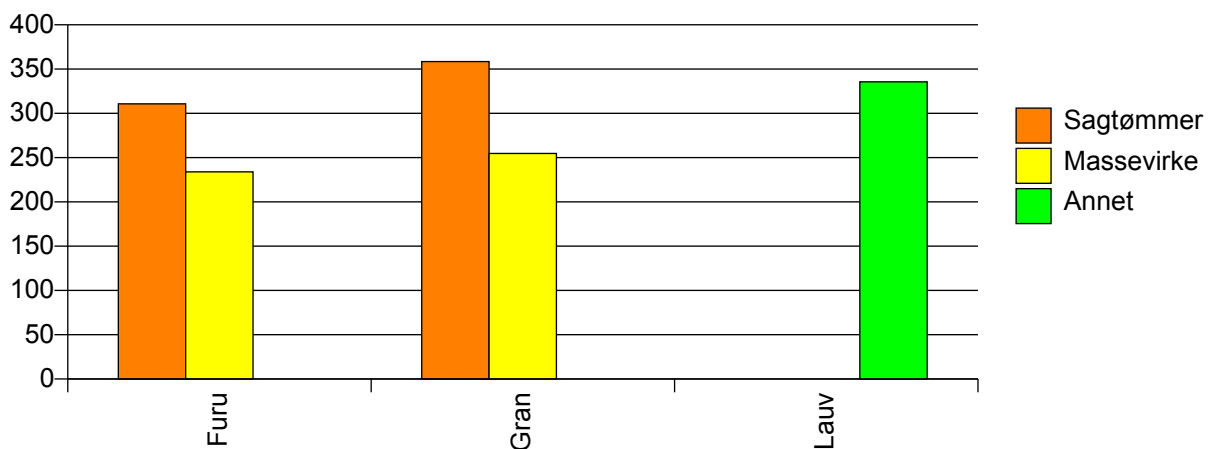
Volum (prosentfordelt)



Gjennomsnittspris 2009 (kr/kbm)

	Sagtømmer	Massevirke	Annet	Vrak	Snitt
Furu	311	234		0	256
Gran	358	255		0	288
Lauv			336		336
Snitt	358	254	336	0	287

Gjennomsnittspris (kr/kbm)

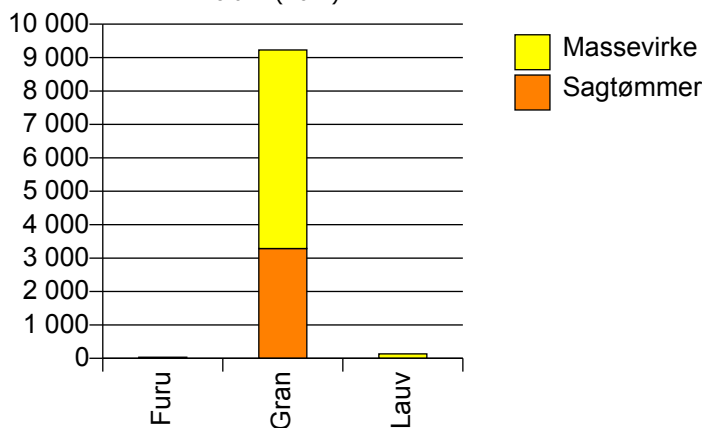


1711 MERÅKER

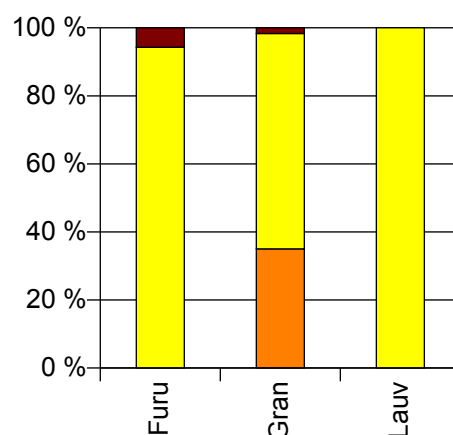
Volum 2009 (kbm)

	Sagtømmer	Massevirke	Vrak	Sum:
Furu		33	2	35
Gran	3 286	5 941	156	9 383
Lauv		133		133
Sum:	3 286	6 107	158	9 551

Volum (kbm)



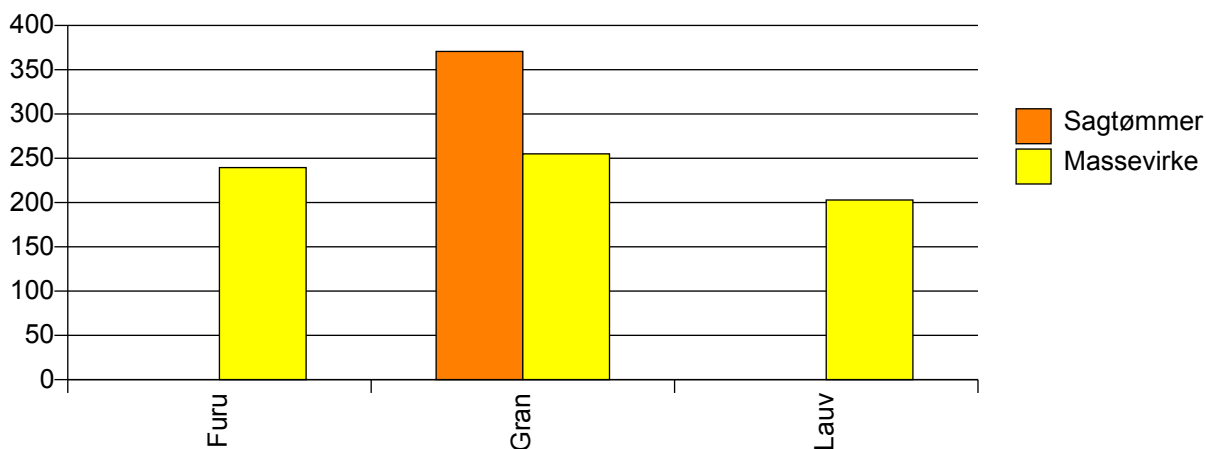
Volum (prosentfordelt)



Gjennomsnittspris 2009 (kr/kbm)

	Sagtømmer	Massevirke	Vrak	Snitt
Furu		240	0	226
Gran	371	255	0	291
Lauv		203		203
Snitt	371	254	0	290

Gjennomsnittspris (kr/kbm)

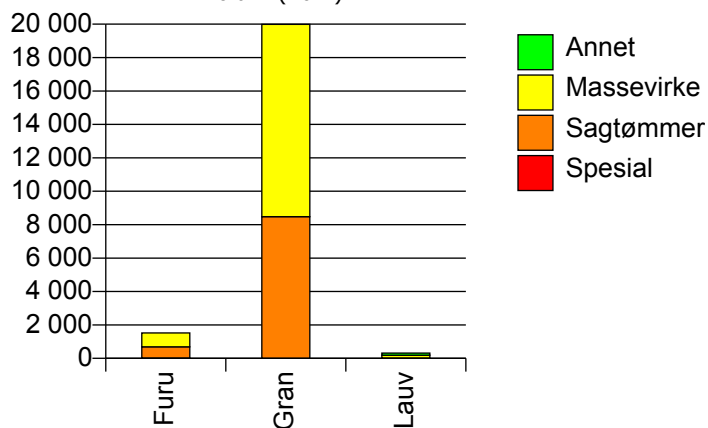


1714 STJØRDAL

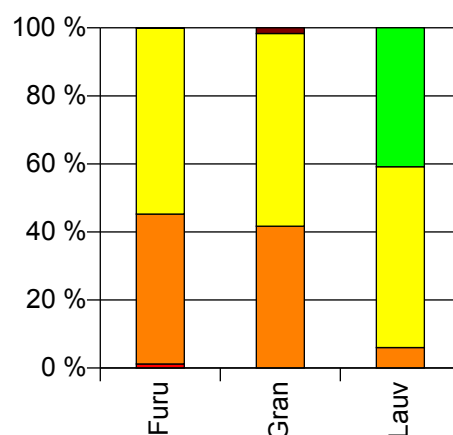
Volum 2009 (kbm)

	Spesial	Sagtømmer	Massevirke	Annet	Vrak	Sum:
Furu	18	670	830		2	1 520
Gran		8 476	11 512		342	20 330
Lauv		19	168	129		316
Sum:	18	9 165	12 510	129	344	22 166

Volum (kbm)



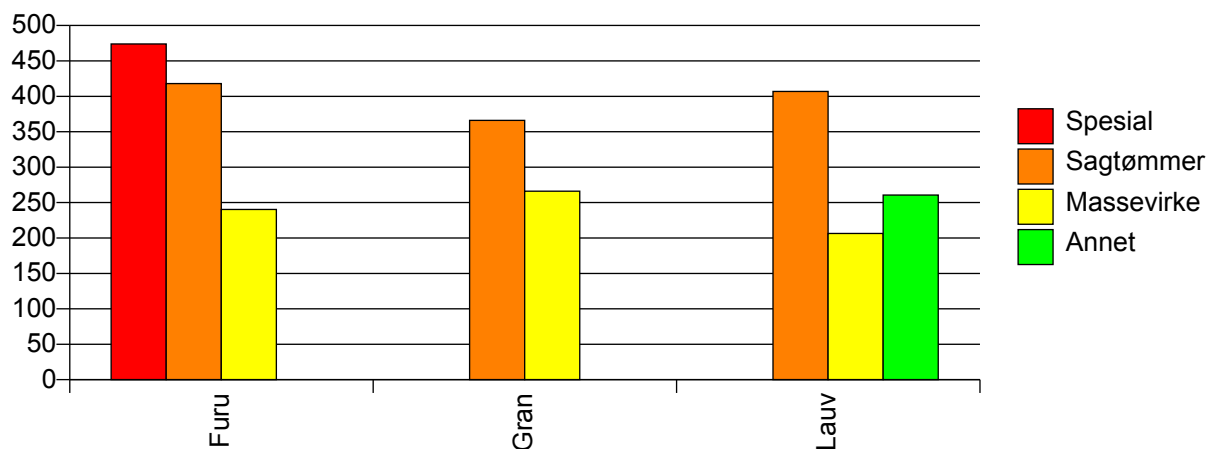
Volum (prosentfordelt)



Gjennomsnittspris 2009 (kr/kbm)

	Spesial	Sagtømmer	Massevirke	Annet	Vrak	Snitt
Furu	474	418	240		0	321
Gran		366	266		0	303
Lauv		407	207	261		241
Snitt	474	370	264	261	0	304

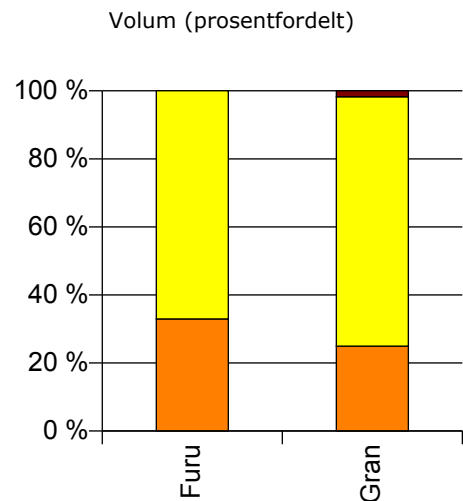
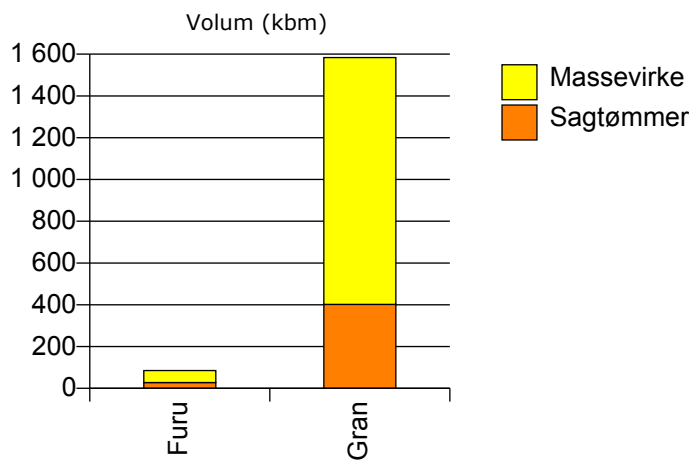
Gjennomsnittspris (kr/kbm)



1717 FROSTA

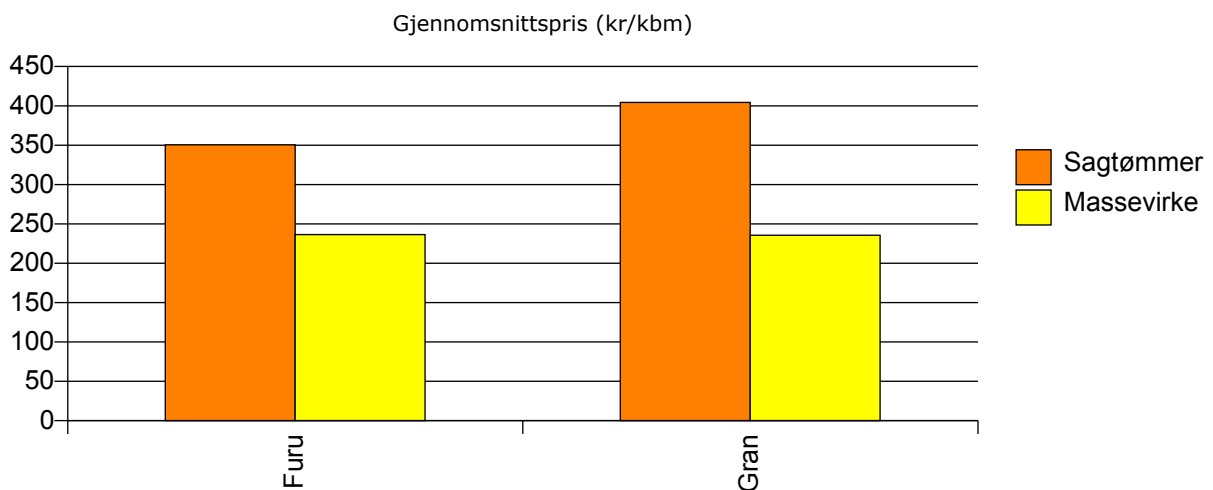
Volum 2009 (kbm)

	Sagtømmer	Massevirke	Vrak	Sum:
Furu	28	57		85
Gran	402	1 182	28	1 612
Sum:	430	1 239	28	1 697



Gjennomsnittspris 2009 (kr/kbm)

	Sagtømmer	Massevirke	Vrak	Snitt
Furu	351	236		274
Gran	404	236	0	274
Snitt	401	236	0	274

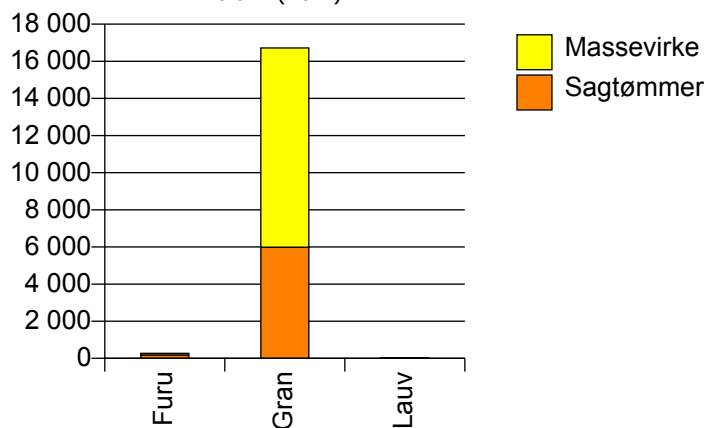


1718 LEKSVIK

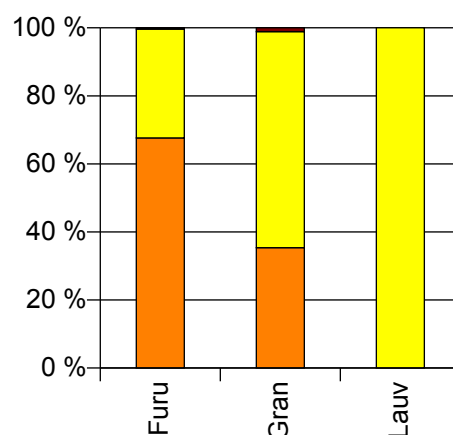
Volum 2009 (kbm)

	Sagtømmer	Massevirke	Vrak	Sum:
Furu	184	87	1	272
Gran	5 984	10 734	187	16 905
Lauv		13		13
Sum:	6 168	10 834	188	17 190

Volum (kbm)



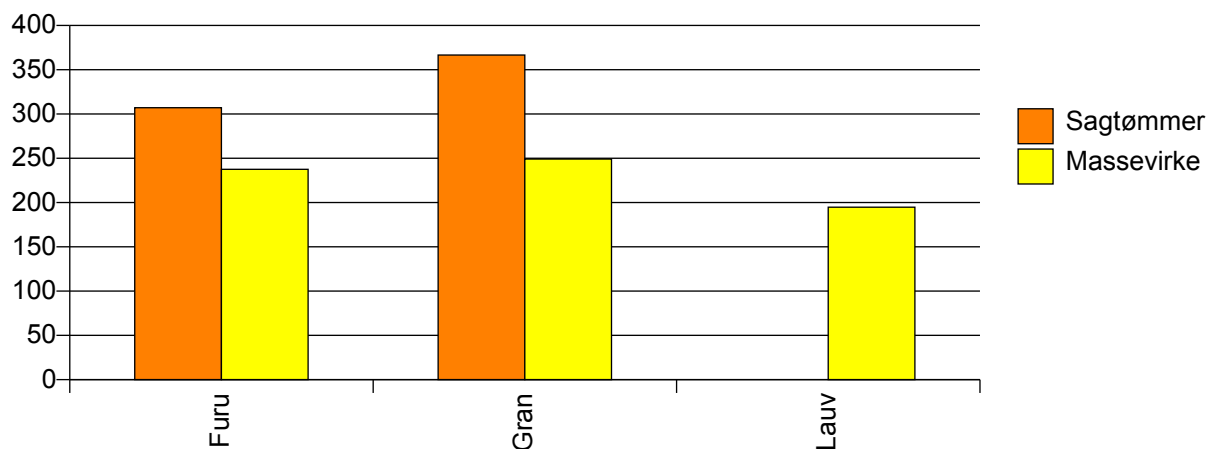
Volum (prosentfordelt)



Gjennomsnittspris 2009 (kr/kbm)

	Sagtømmer	Massevirke	Vrak	Snitt
Furu	307	238	0	284
Gran	367	249	0	288
Lauv		195		195
Snitt	365	249	0	288

Gjennomsnittspris (kr/kbm)

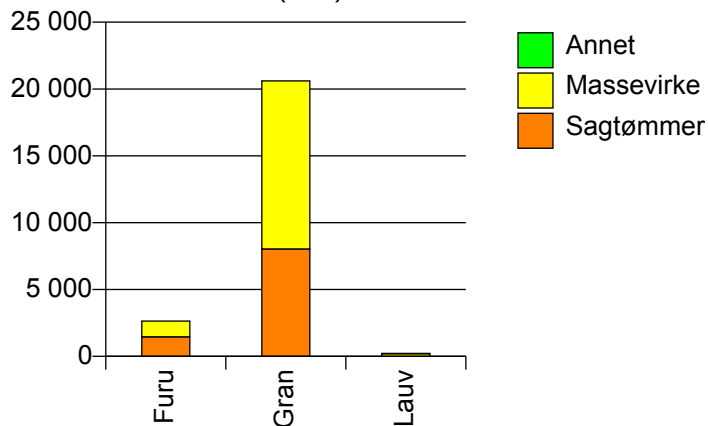


1719 LEVANGER

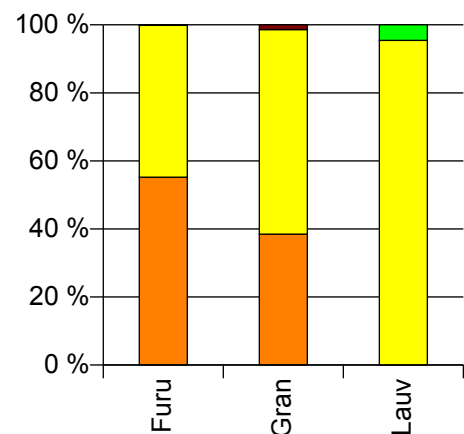
Volum 2009 (kbm)

	Sagtømmer	Massevirke	Annet	Vrak	Sum:
Furu	1 461	1 181		4	2 646
Gran	8 039	12 570		287	20 896
Lauv		209	10		219
Sum:	9 500	13 960	10	291	23 761

Volum (kbm)



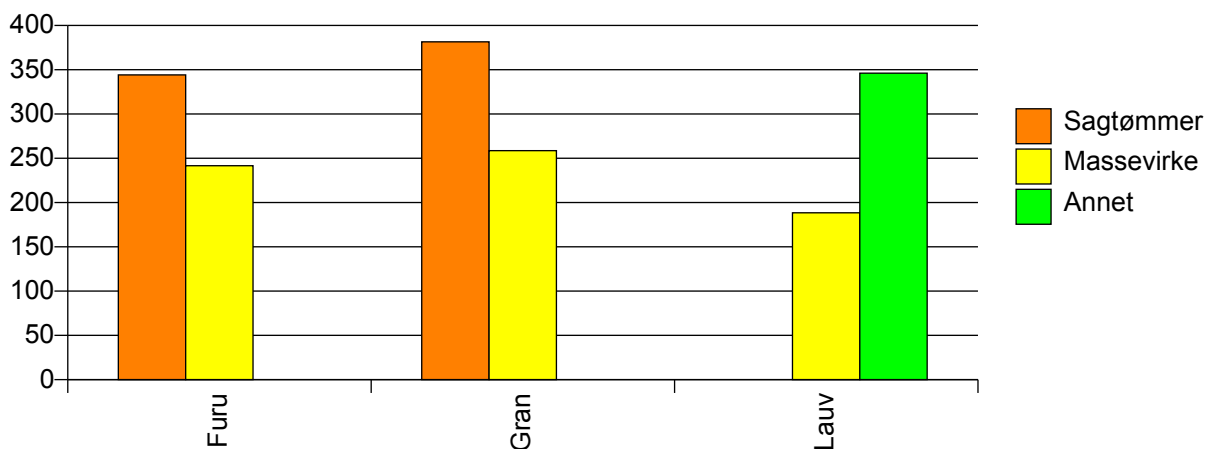
Volum (prosentfordelt)



Gjennomsnittspris 2009 (kr/kbm)

	Sagtømmer	Massevirke	Annet	Vrak	Snitt
Furu	344	242		0	298
Gran	382	259		0	302
Lauv		188	346		196
Snitt	376	256	346	0	301

Gjennomsnittspris (kr/kbm)

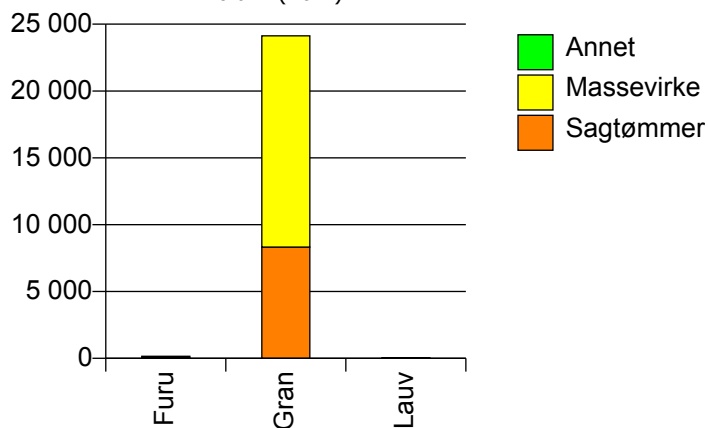


1721 VERDAL

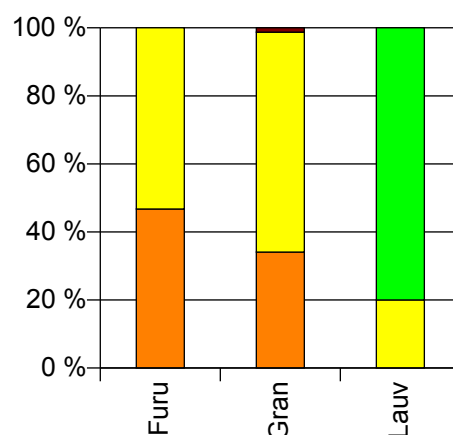
Volum 2009 (kbm)

	Sagtømmer	Massevirke	Annet	Vrak	Sum:
Furu	72	82			154
Gran	8 330	15 800		312	24 442
Lauv		9	36		45
Sum:	8 402	15 891	36	312	24 641

Volum (kbm)



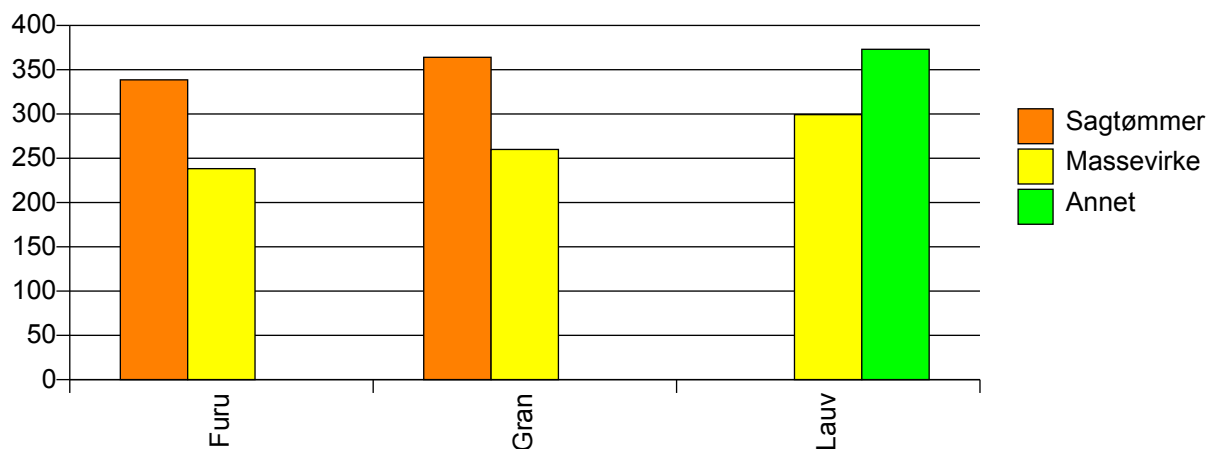
Volum (prosentfordelt)



Gjennomsnittspris 2009 (kr/kbm)

	Sagtømmer	Massevirke	Annet	Vrak	Snitt
Furu	339	238			285
Gran	364	260		0	292
Lauv		299	373		358
Snitt	364	260	373	0	292

Gjennomsnittspris (kr/kbm)

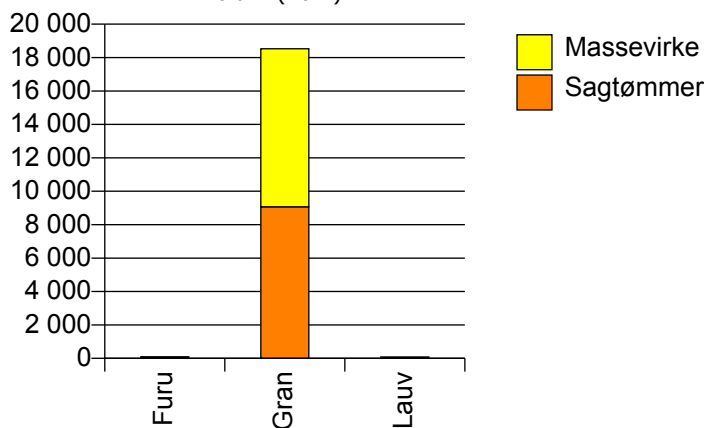


1723 MOSVIK

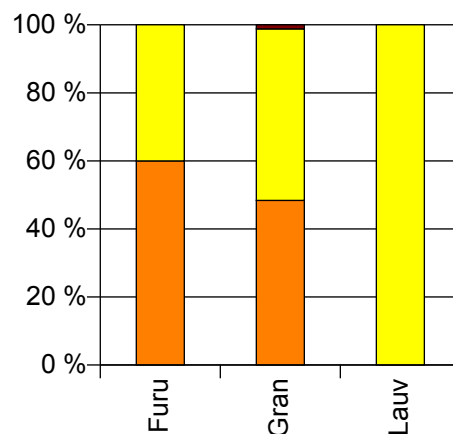
Volum 2009 (kbm)

	Sagtømmer	Massevirke	Vrak	Sum:
Furu	51	34		85
Gran	9 073	9 456	226	18 755
Lauv		82		82
Sum:	9 124	9 572	226	18 922

Volum (kbm)



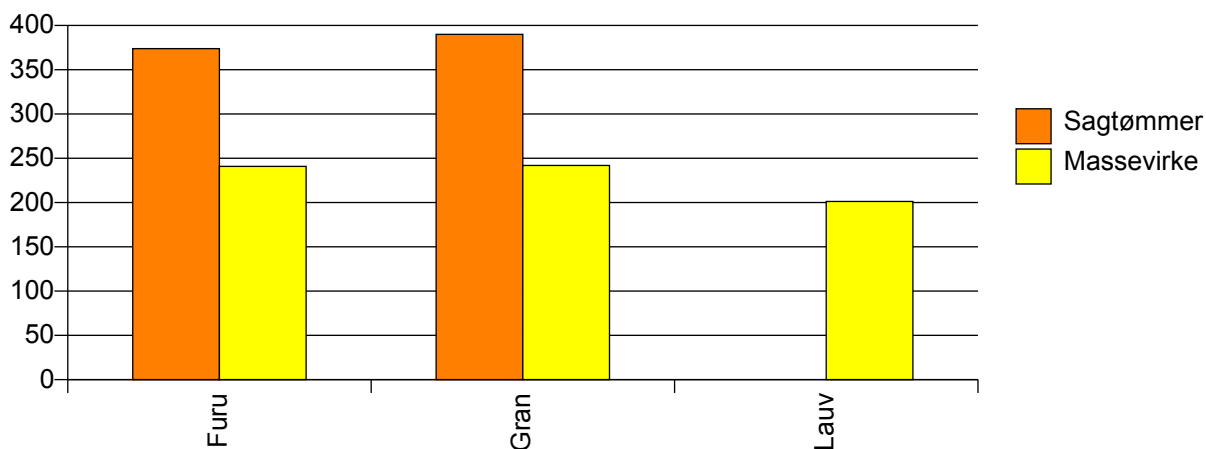
Volum (prosentfordelt)



Gjennomsnittspris 2009 (kr/kbm)

	Sagtømmer	Massevirke	Vrak	Snitt
Furu	374	241		321
Gran	390	242	0	311
Lauv		201		201
Snitt	390	242	0	310

Gjennomsnittspris (kr/kbm)

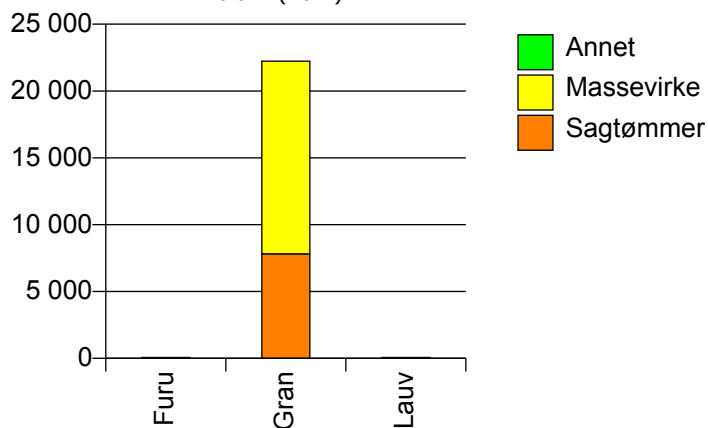


1724 VERRAN

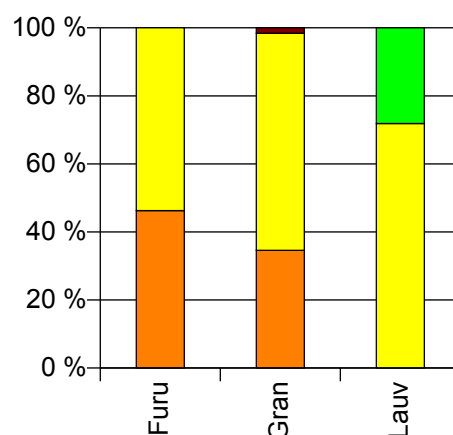
Volum 2009 (kbm)

	Sagtømmer	Massevirke	Annet	Vrak	Sum:
Furu	31	36			67
Gran	7 814	14 421		355	22 590
Lauv		46	18		64
Sum:	7 845	14 503	18	355	22 721

Volum (kbm)



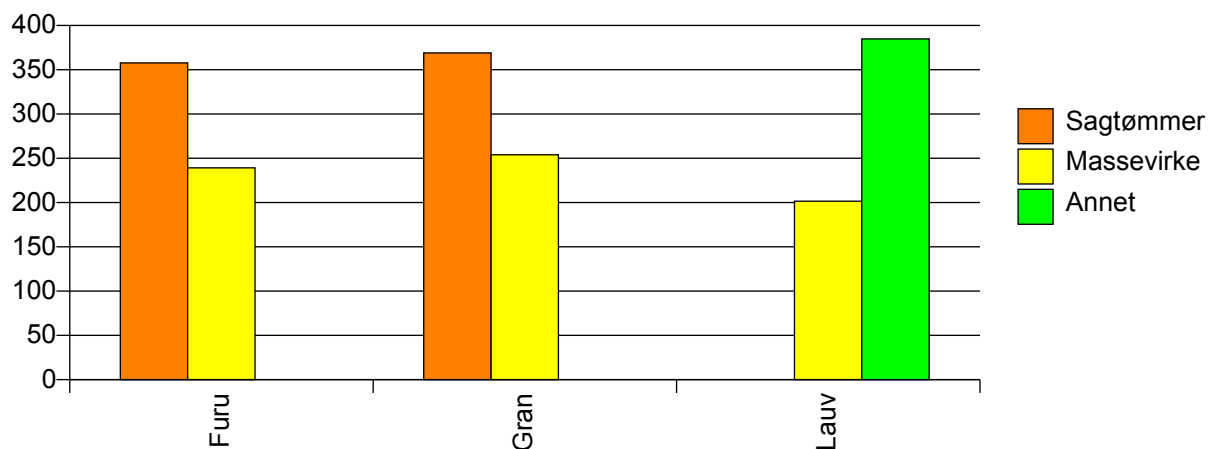
Volum (prosentfordelt)



Gjennomsnittspris 2009 (kr/kbm)

	Sagtømmer	Massevirke	Annet	Vrak	Snitt
Furu	358	239			294
Gran	369	254		0	290
Lauv		202	385		253
Snitt	369	254	385	0	290

Gjennomsnittspris (kr/kbm)

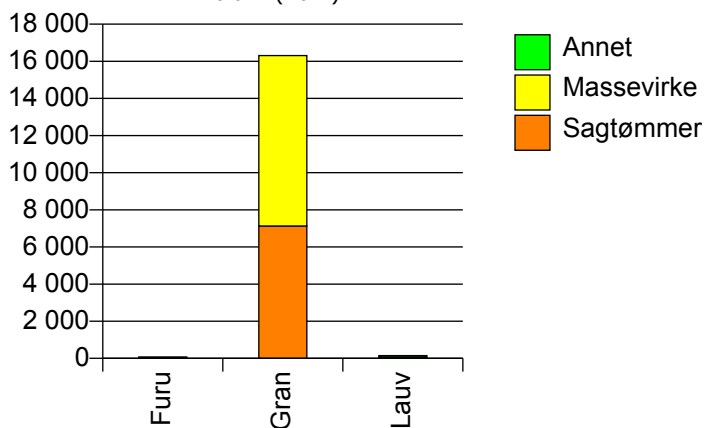


1725 NAMDALSEID

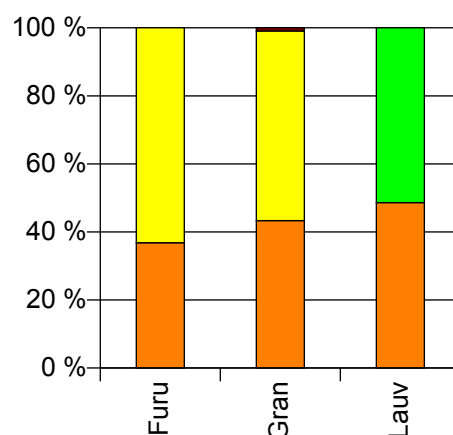
Volum 2009 (kbm)

	Sagtømmer	Massevirke	Annet	Vrak	Sum:
Furu	28	48			76
Gran	7 130	9 175		149	16 454
Lauv	70		74		144
Sum:	7 228	9 223	74	149	16 674

Volum (kbm)



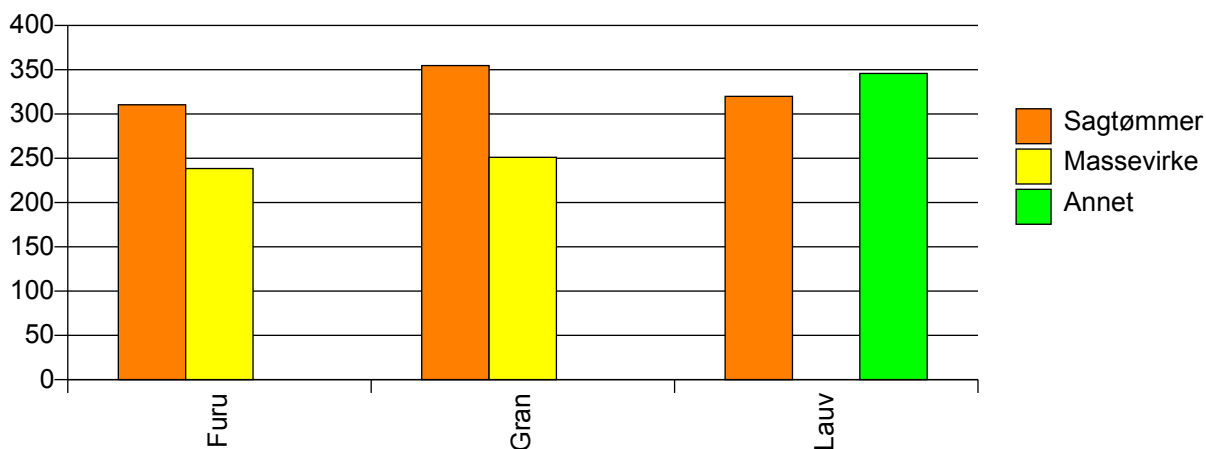
Volum (prosentfordelt)



Gjennomsnittspris 2009 (kr/kbm)

	Sagtømmer	Massevirke	Annet	Vrak	Snitt
Furu	311	239			265
Gran	355	251		0	294
Lauv	320		346		333
Snitt	354	251	346	0	294

Gjennomsnittspris (kr/kbm)

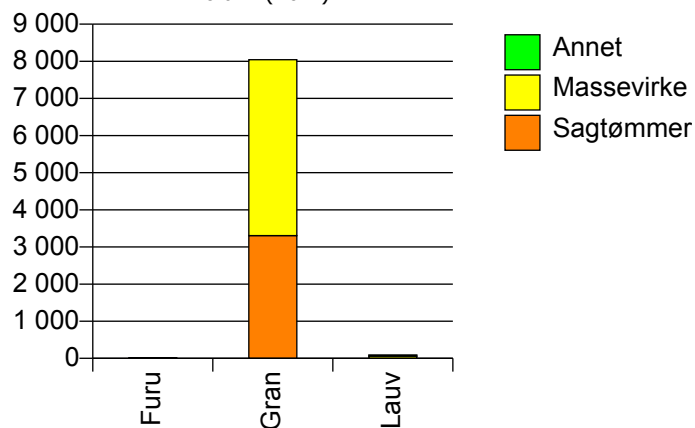


1729 INDERØY

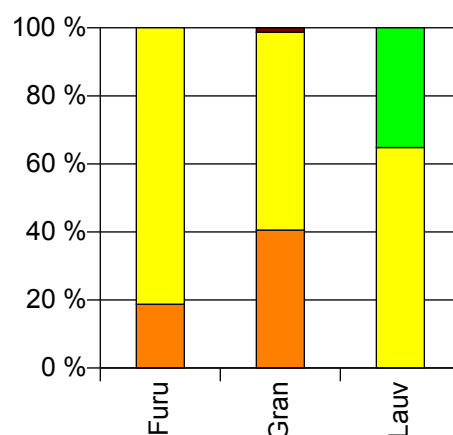
Volum 2009 (kbm)

	Sagtømmer	Massevirke	Annet	Vrak	Sum:
Furu	3	13			16
Gran	3 306	4 738		106	8 150
Lauv		59	32		91
Sum:	3 309	4 810	32	106	8 257

Volum (kbm)



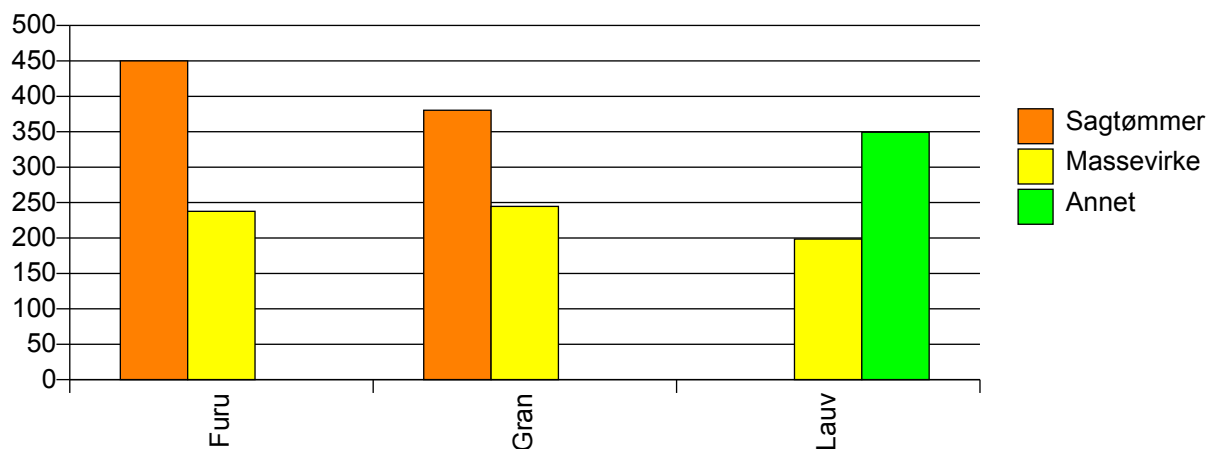
Volum (prosentfordelt)



Gjennomsnittspris 2009 (kr/kbm)

	Sagtømmer	Massevirke	Annet	Vrak	Snitt
Furu	450	238			277
Gran	380	245		0	297
Lauv		199	349		252
Snitt	381	244	349	0	296

Gjennomsnittspris (kr/kbm)

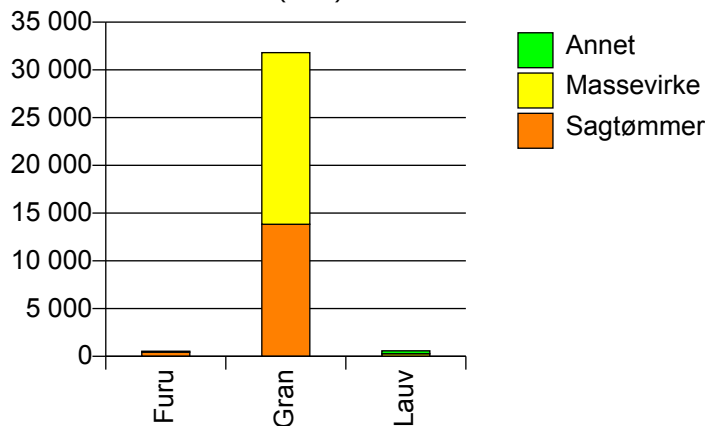


1736 SNÅSA

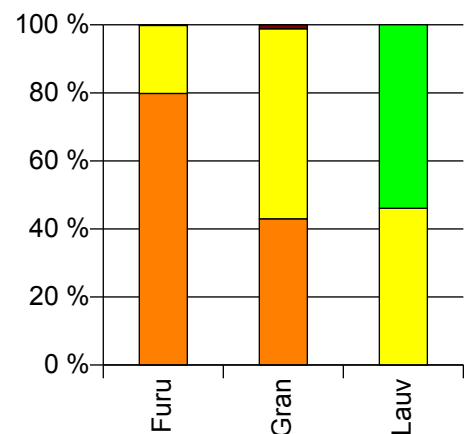
Volum 2009 (kbm)

	Sagtømmer	Massevirke	Annet	Vrak	Sum:
Furu	435	109		1	545
Gran	13 834	17 971		369	32 174
Lauv		270	316		586
Sum:	14 269	18 350	316	370	33 305

Volum (kbm)



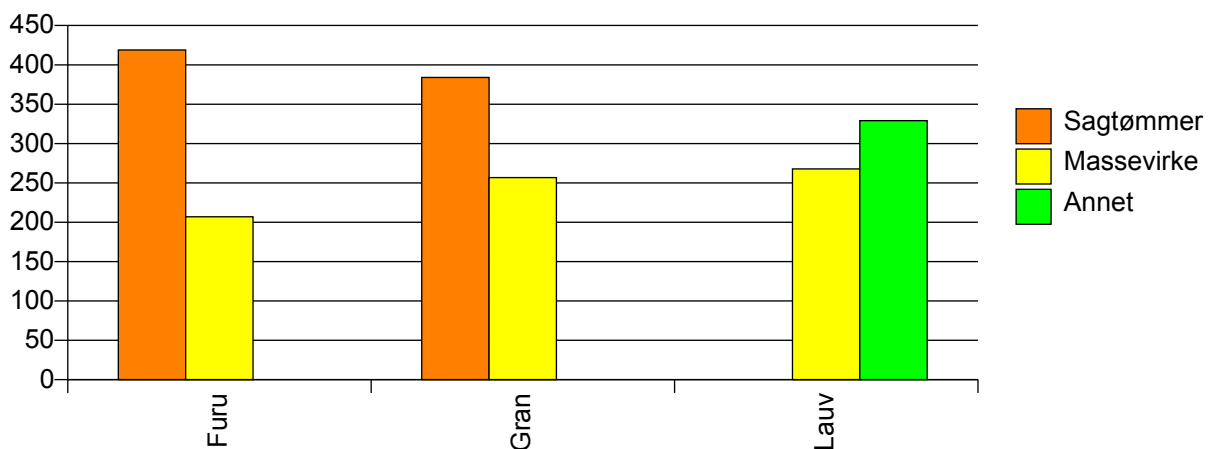
Volum (prosentfordelt)



Gjennomsnittspris 2009 (kr/kbm)

	Sagtømmer	Massevirke	Annet	Vrak	Snitt
Furu	419	207		0	376
Gran	384	257		0	308
Lauv		268	329		301
Snitt	385	257	329	0	309

Gjennomsnittspris (kr/kbm)

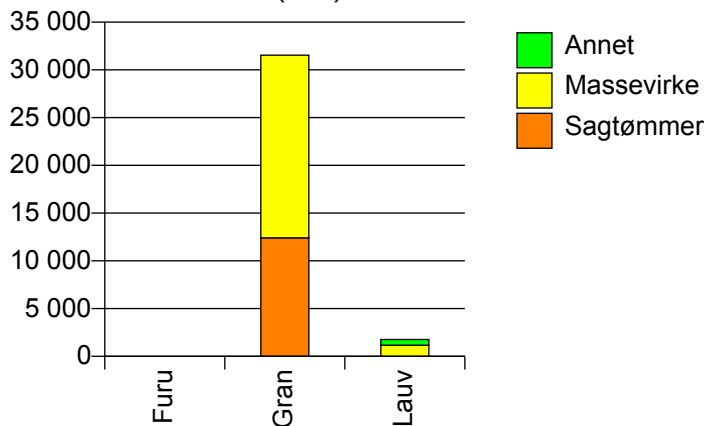


1738 LIERNE

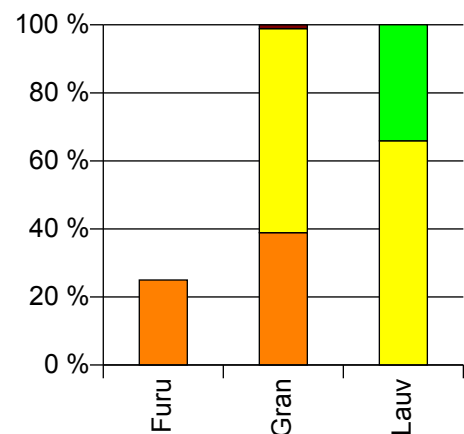
Volum 2009 (kbm)

	Sagtømmer	Massevirke	Annet	Vrak	Sum:
Furu	0				0
Gran	12 406	19 132		359	31 897
Lauv		1 169	604		1 773
Sum:	12 406	20 301	604	359	33 670

Volum (kbm)



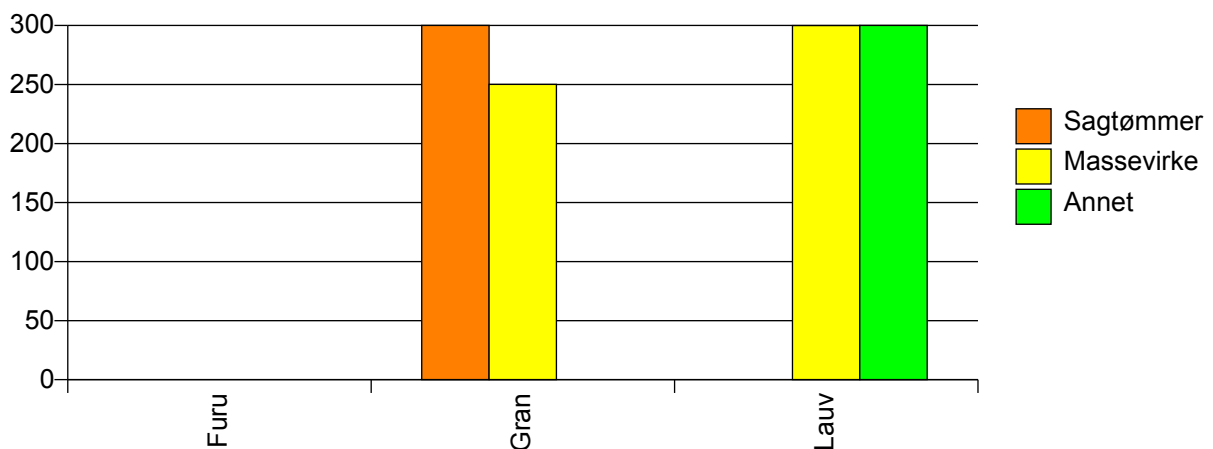
Volum (prosentfordelt)



Gjennomsnittspris 2009 (kr/kbm)

	Sagtømmer	Massevirke	Annet	Vrak	Snitt
Furu	#DIV/0				#DIV/0
Gran	371	250		0	294
Lauv		300	331		310
Snitt	371	253	331	0	295

Gjennomsnittspris (kr/kbm)

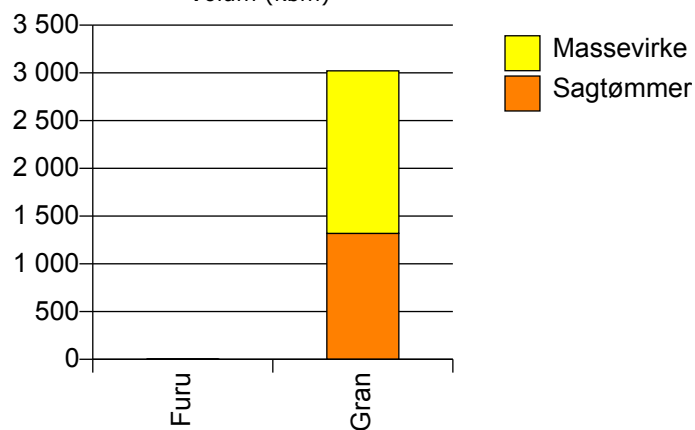


1740 NAMSSKOGAN

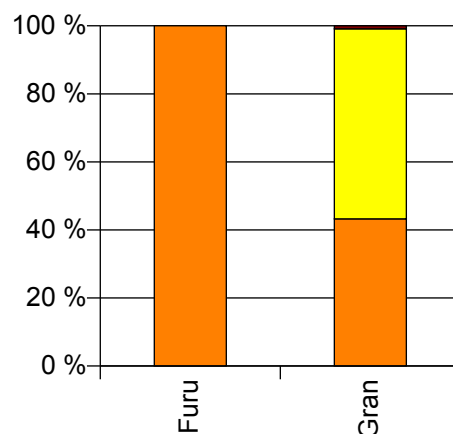
Volum 2009 (kbm)

	Sagtømmer	Massevirke	Vrak	Sum:
Furu	2			2
Gran	1 319	1 703	27	3 049
Sum:	1 321	1 703	27	3 051

Volum (kbm)



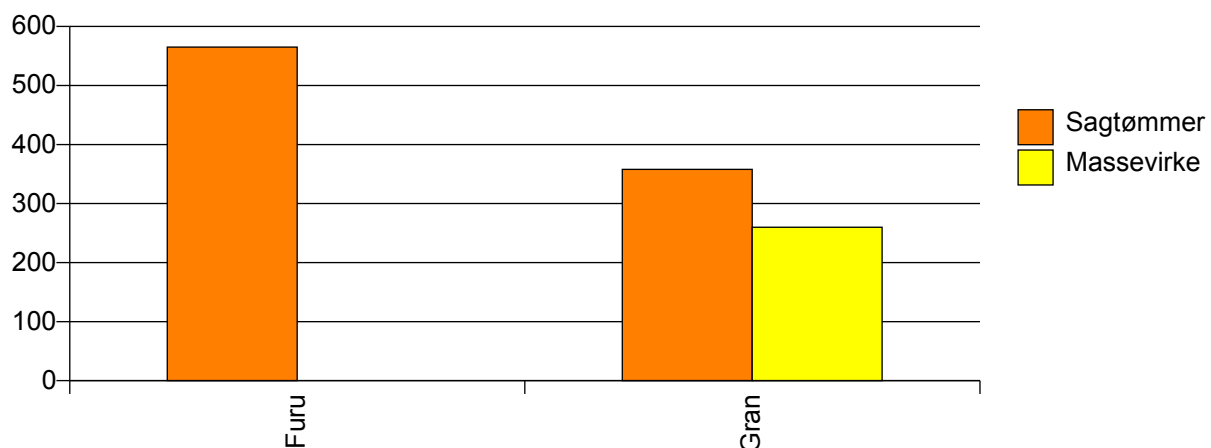
Volum (prosentfordelt)



Gjennomsnittspris 2009 (kr/kbm)

	Sagtømmer	Massevirke	Vrak	Snitt
Furu	565			565
Gran	358	260	0	300
Snitt	358	260	0	300

Gjennomsnittspris (kr/kbm)

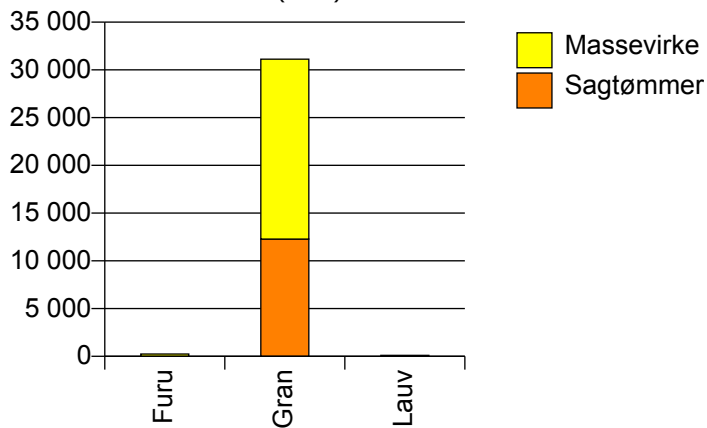


1742 GRONG

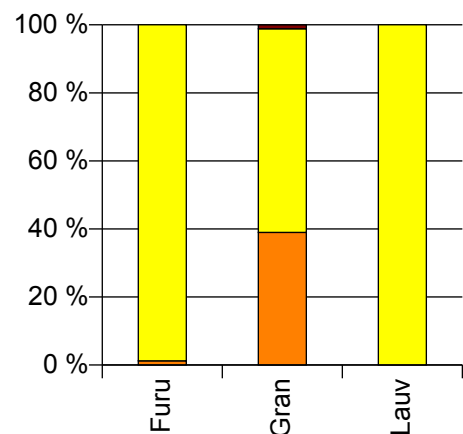
Volum 2009 (kbm)

	Sagtømmer	Massevirke	Vrak	Sum:
Furu	3	239		242
Gran	12 279	18 847	365	31 491
Lauv		98		98
Sum:	12 282	19 184	365	31 831

Volum (kbm)



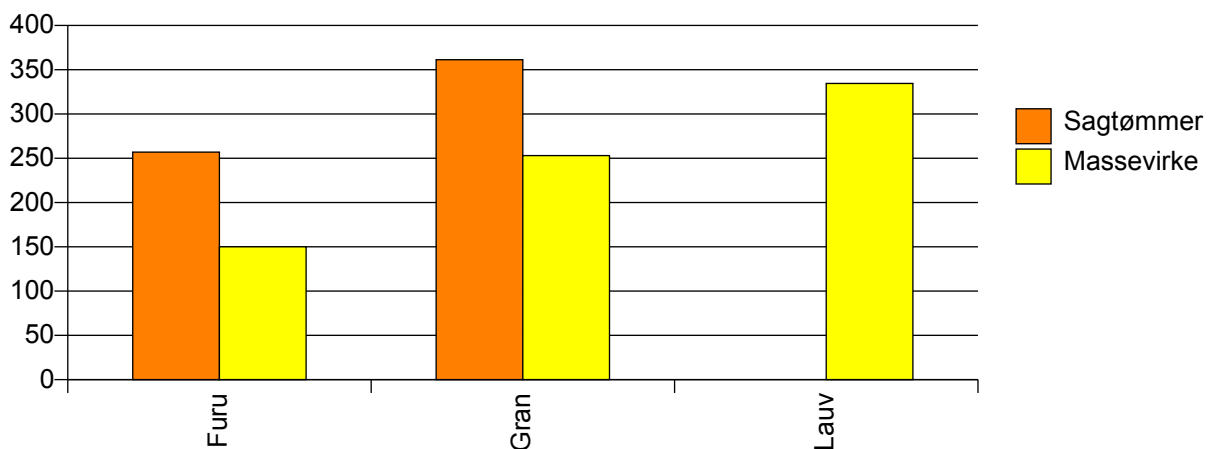
Volum (prosentfordelt)



Gjennomsnittspris 2009 (kr/kbm)

	Sagtømmer	Massevirke	Vrak	Snitt
Furu	257	150		151
Gran	361	253	0	292
Lauv		335		335
Snitt	361	252	0	291

Gjennomsnittspris (kr/kbm)

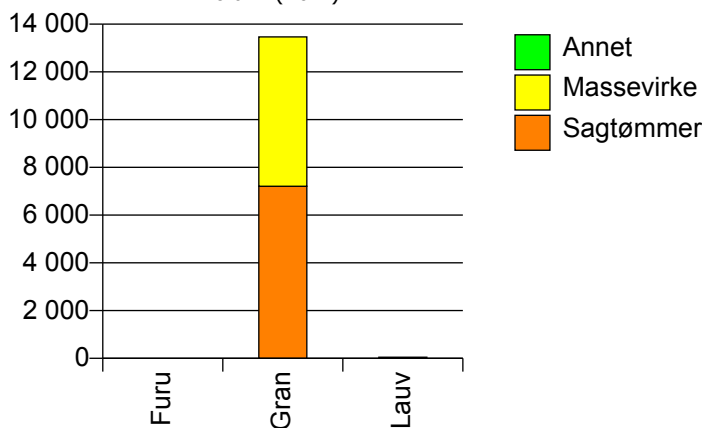


1743 HØYLANDET

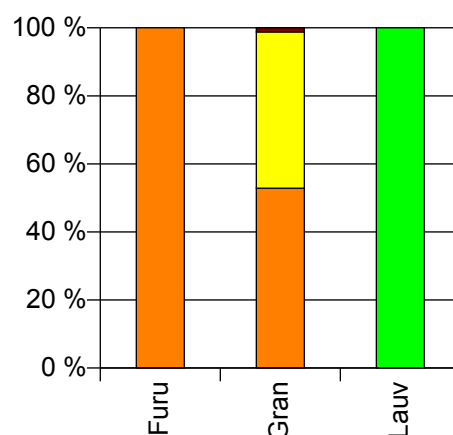
Volum 2009 (kbm)

	Sagtømmer	Massevirke	Annet	Vrak	Sum:
Furu	2				2
Gran	7 207	6 259		164	13 630
Lauv			49		49
Sum:	7 209	6 259	49	164	13 681

Volum (kbm)



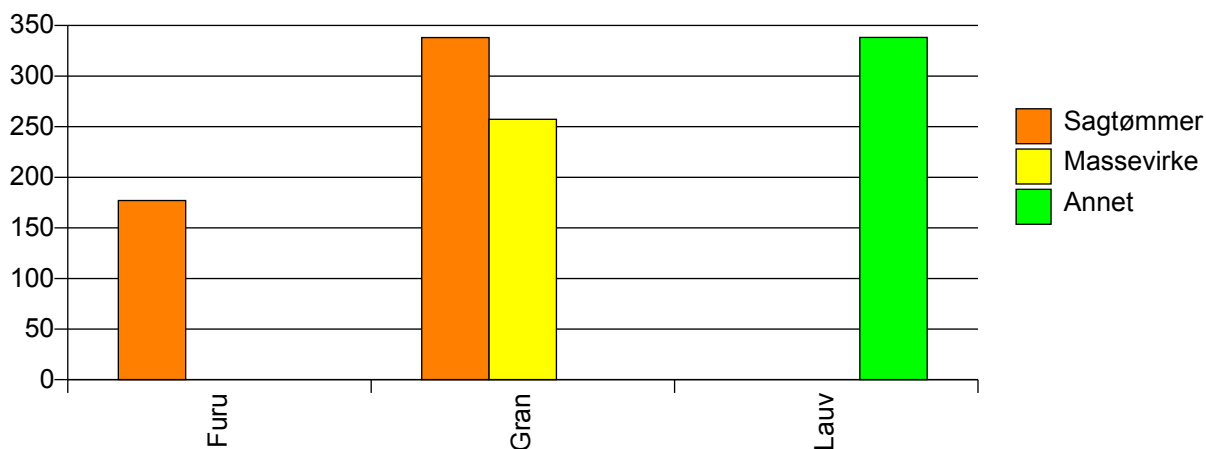
Volum (prosentfordelt)



Gjennomsnittspris 2009 (kr/kbm)

	Sagtømmer	Massevirke	Annet	Vrak	Snitt
Furu	177				177
Gran	338	257		0	297
Lauv			338		338
Snitt	338	257	338	0	297

Gjennomsnittspris (kr/kbm)

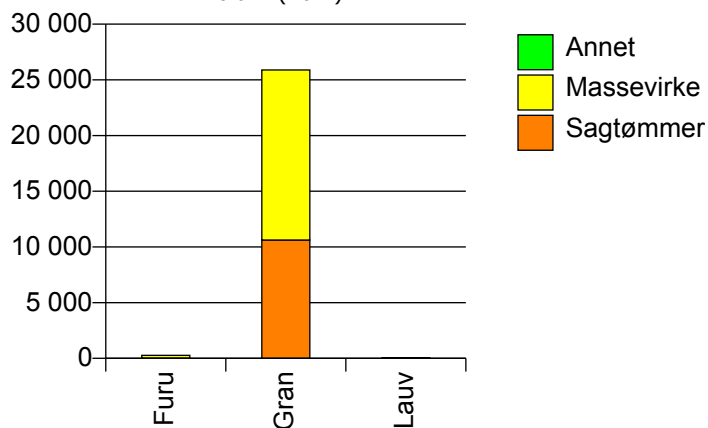


1744 OVERHALLA

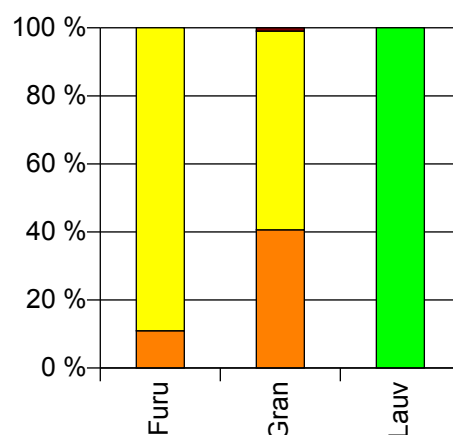
Volum 2009 (kbm)

	Sagtømmer	Massevirke	Annet	Vrak	Sum:
Furu	30	244			274
Gran	10 621	15 266		255	26 142
Lauv			45		45
Sum:	10 651	15 510	45	255	26 461

Volum (kbm)



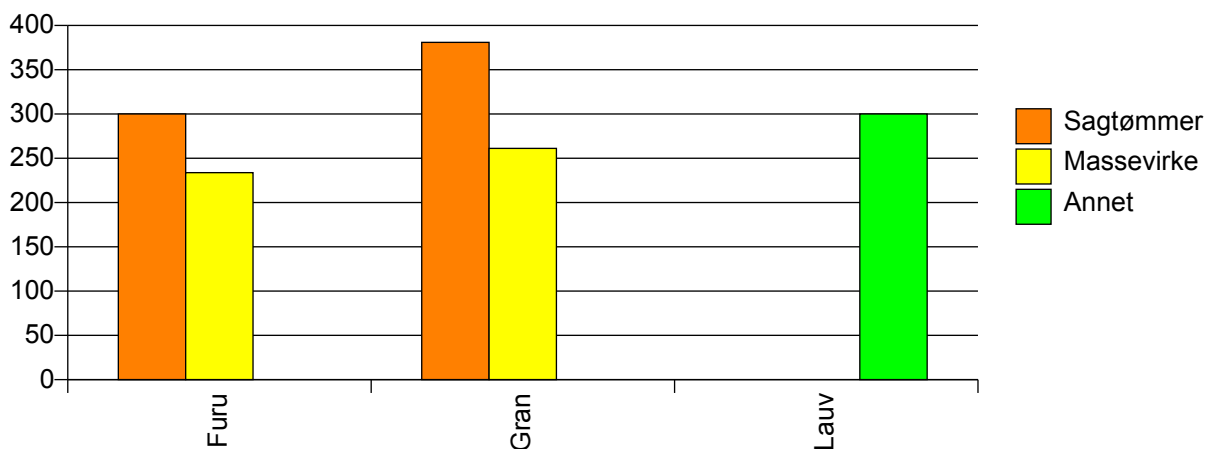
Volum (prosentfordelt)



Gjennomsnittspris 2009 (kr/kbm)

	Sagtømmer	Massevirke	Annet	Vrak	Snitt
Furu	300	234			241
Gran	381	261		0	307
Lauv			300		300
Snitt	381	261	300	0	307

Gjennomsnittspris (kr/kbm)

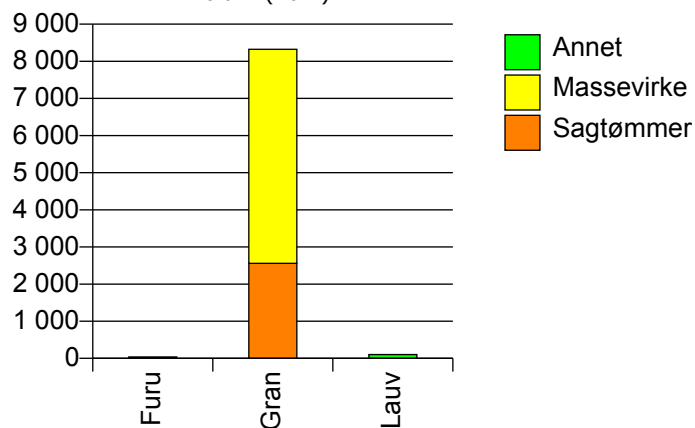


1751 NÆRØY

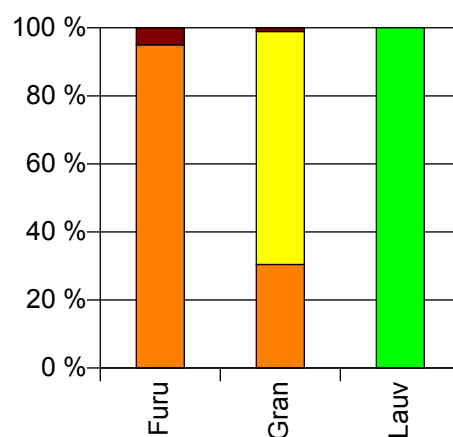
Volum 2009 (kbm)

	Sagtømmer	Massevirke	Annet	Vrak	Sum:
Furu	38			2	40
Gran	2 560	5 762		90	8 412
Lauv			103		103
Sum:	2 598	5 762	103	92	8 555

Volum (kbm)



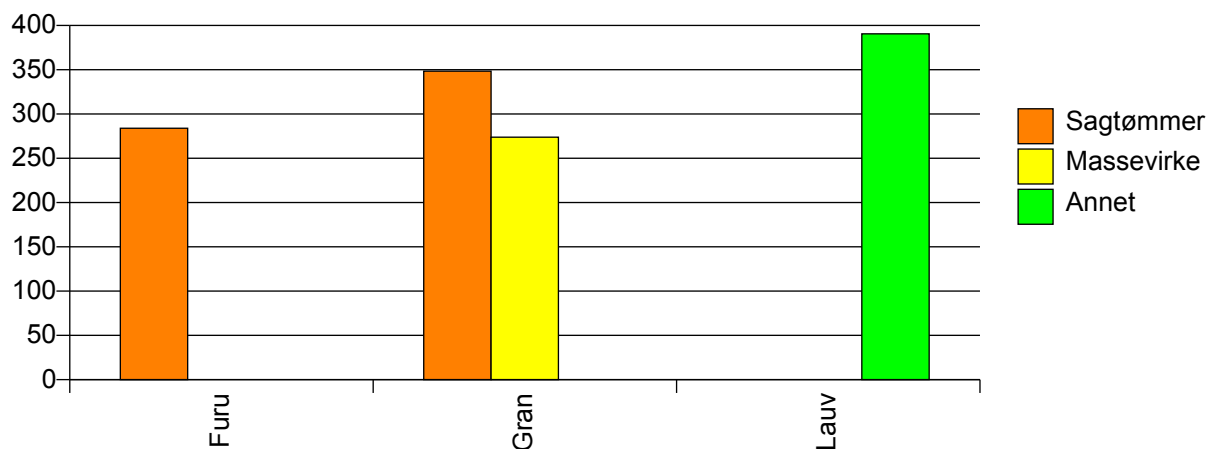
Volum (prosentfordelt)



Gjennomsnittspris 2009 (kr/kbm)

	Sagtømmer	Massevirke	Annet	Vrak	Snitt
Furu	284			0	270
Gran	348	274		0	294
Lauv			391		391
Snitt	347	274	391	0	295

Gjennomsnittspris (kr/kbm)

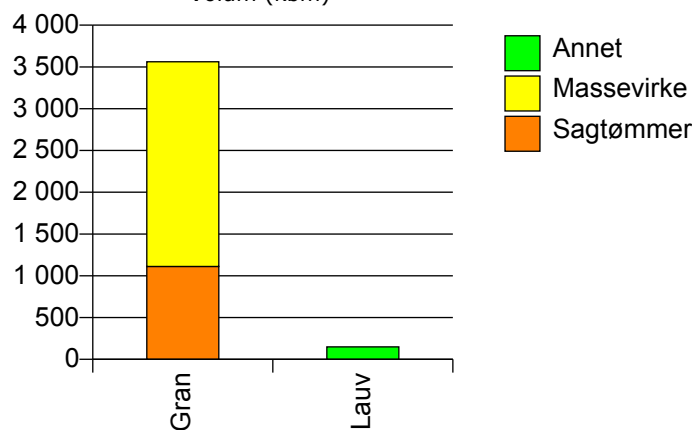


1739 RØYRVIK

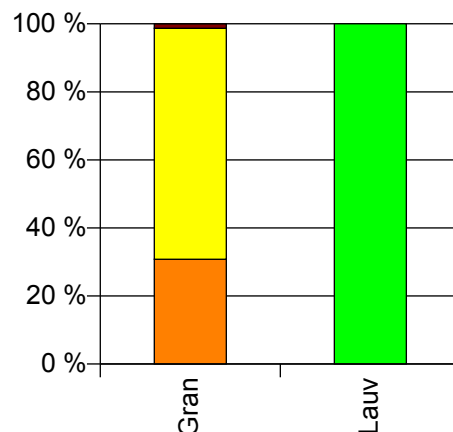
Volum 2009 (kbm)

	Sagtømmer	Massevirke	Annet	Vrak	Sum:
Gran	1 111	2 451		47	3 609
Lauv			150		150
Sum:	1 111	2 451	150	47	3 759

Volum (kbm)



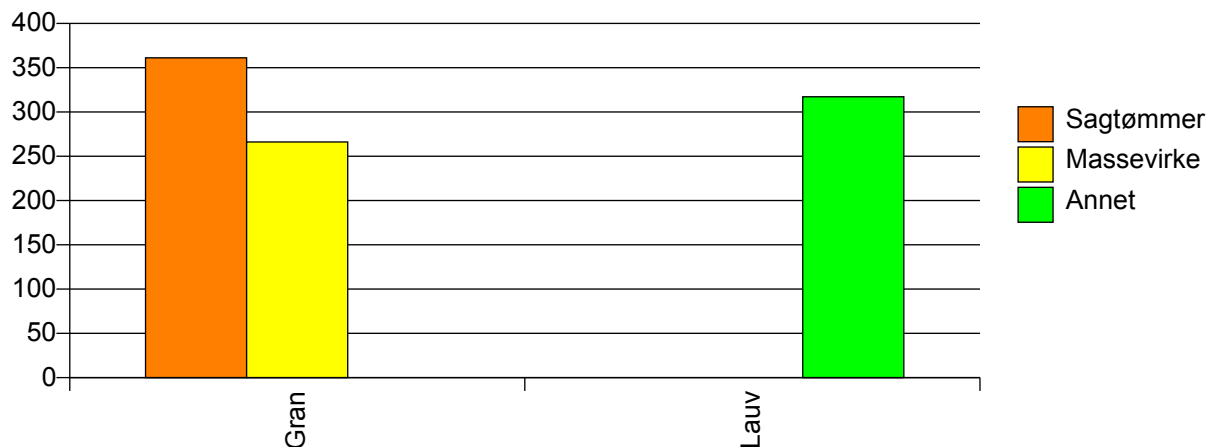
Volum (prosentfordelt)



Gjennomsnittspris 2009 (kr/kbm)

	Sagtømmer	Massevirke	Annet	Vrak	Snitt
Gran	361	266		0	292
Lauv			317		317
Snitt	361	266	317	0	293

Gjennomsnittspris (kr/kbm)

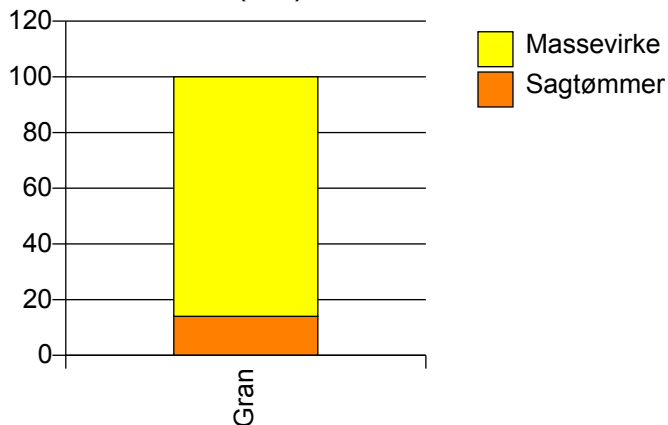


1748 FOSNES

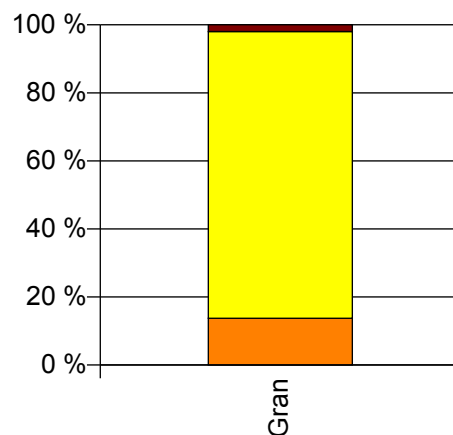
Volum 2009 (kbm)

	Sagtømmer	Massevirke	Vrak	Sum:
Gran	14	86	2	102
Sum:	14	86	2	102

Volum (kbm)



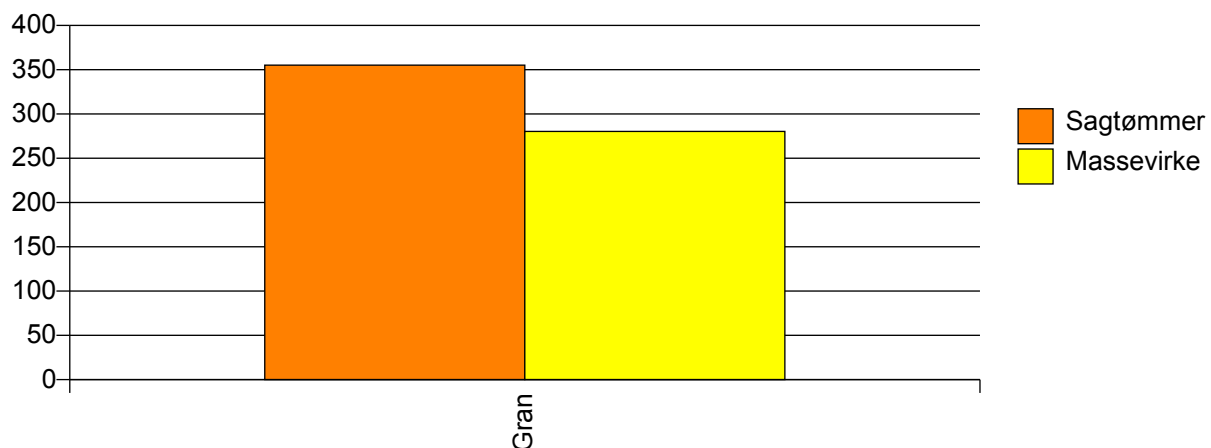
Volum (prosentfordelt)



Gjennomsnittspris 2009 (kr/kbm)

Gran	355	280	0	285
Snitt	355	280	0	285

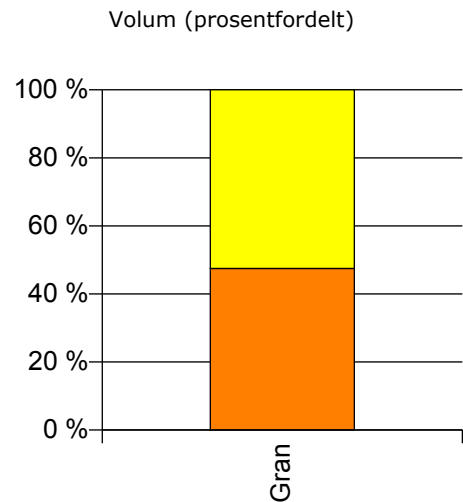
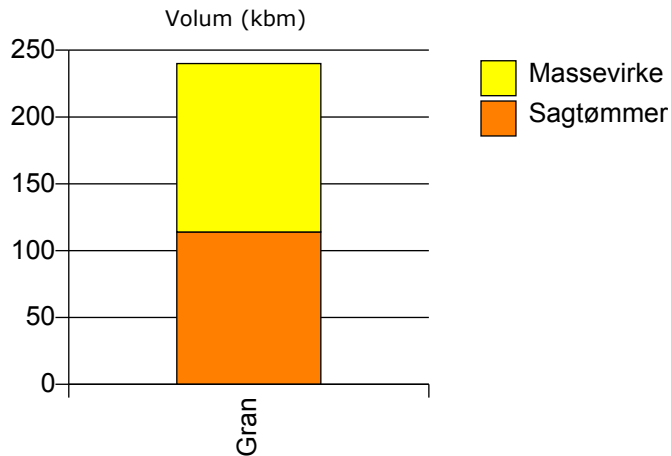
Gjennomsnittspris (kr/kbm)



1749 FLATANGER

Volum 2009 (kbm)

	Sagtømmer	Massevirke	Sum:
Gran	114	126	240
Sum:	114	126	240



Gjennomsnittspris 2009 (kr/kbm)

Gran	375	274	322
Snitt	375	274	322

