

Virkestatistikk fra

# SKOG-DATA AS

**Hedmark m/kommuner**

*Dataene i rapporten er hentet fra databasen som inneholder virkesdata med tilhørende innbetalinger av skogavgift. Rapporten er laget med Business Objects, som er sluttbrukerverktøyet i Skog-Data sine nye datavarehus-løsninger. Business Objects er ett meget sterkt rapportverktøy som kan presentere store mengder data effektivt.*

Rapportene kan lastes ned fra [www.skogdata.no/statistikk](http://www.skogdata.no/statistikk)

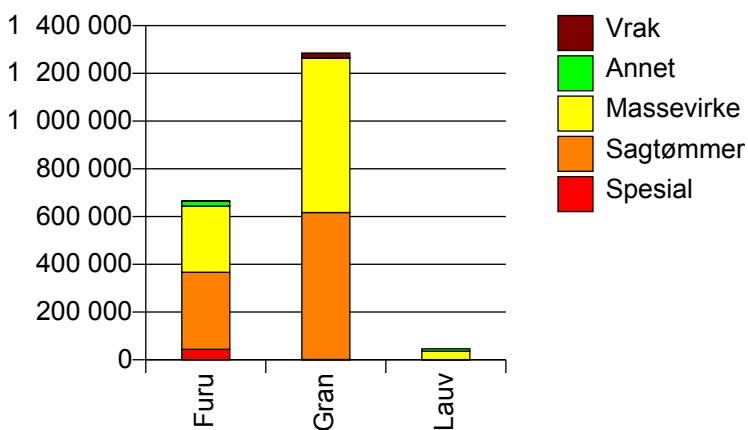
For mer informasjon, kontakt: [tabh@skogdata.no](mailto:tabh@skogdata.no)

## Hedmark

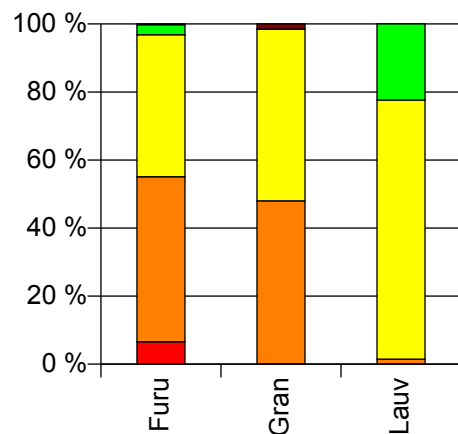
## Volum 2009

	Spesial	Sagtømmer	Massevirke	Annet	Vrak	Sum:
<b>Furu</b>	43 793	322 856	277 552	19 789	1 329	<b>665 319</b>
<b>Gran</b>	1 159	615 816	648 195	726	19 423	<b>1 285 319</b>
<b>Lauv</b>		688	35 274	10 364		<b>46 326</b>
<b>Sum:</b>	<b>44 952</b>	<b>939 360</b>	<b>961 021</b>	<b>30 879</b>	<b>20 752</b>	<b>1 996 964</b>

Volum (kbm)



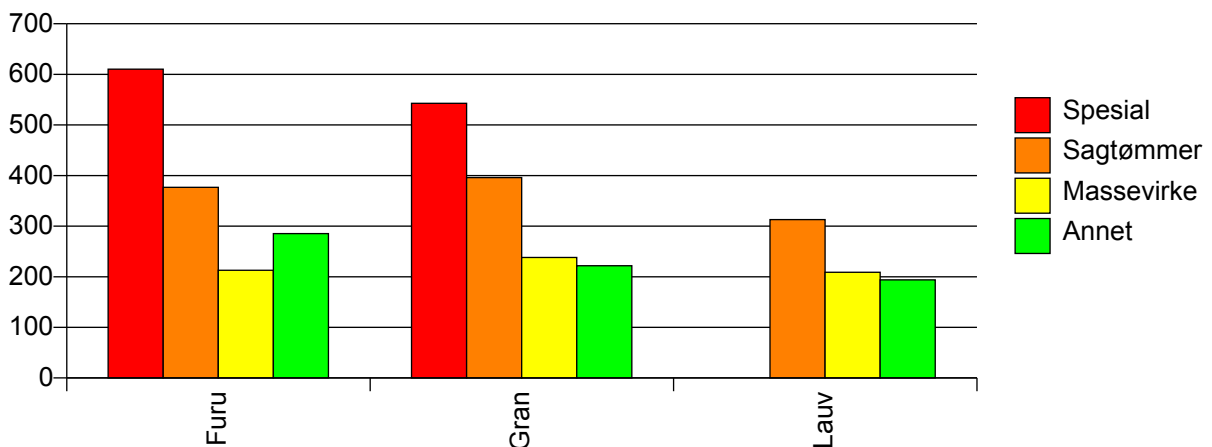
Volum (prosentfordelt)



## Gjennomsnittspris 2009 (kr/kbm)

	Spesial	Sagtømmer	Massevirke	Annet	Vrak	Snitt:
<b>Furu</b>	610	377	213	285	0	<b>320</b>
<b>Gran</b>	543	396	238	222	0	<b>310</b>
<b>Lauv</b>		313	209	194		<b>207</b>
<b>Snitt:</b>	<b>608</b>	<b>389</b>	<b>230</b>	<b>253</b>	<b>0</b>	<b>311</b>

Gjennomsnittspris (kr/kbm)

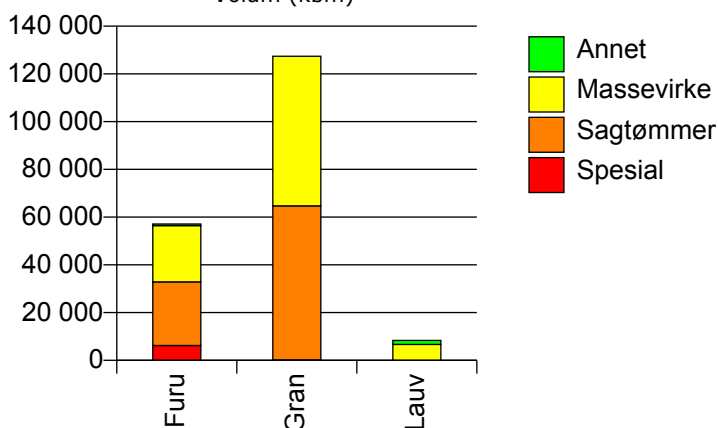


## 402 KONGSVINGER

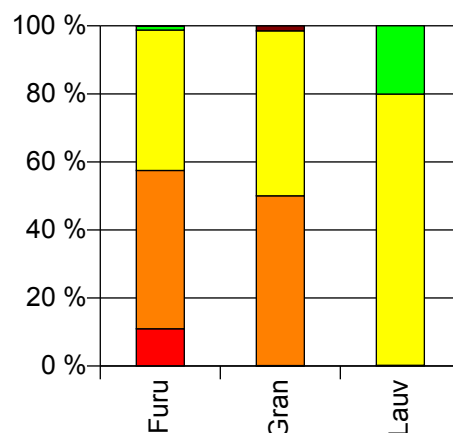
## Volum 2009 (kbm)

	Spesial	Sagtømmer	Massevirke	Annet	Vrak	Sum:
<b>Furu</b>	6 254	26 614	23 597	675	28	<b>57 168</b>
<b>Gran</b>	178	64 532	62 709		1 910	<b>129 329</b>
<b>Lauv</b>		19	6 650	1 673		<b>8 342</b>
<b>Sum:</b>	<b>6 432</b>	<b>91 165</b>	<b>92 956</b>	<b>2 348</b>	<b>1 938</b>	<b>194 839</b>

Volum (kbm)



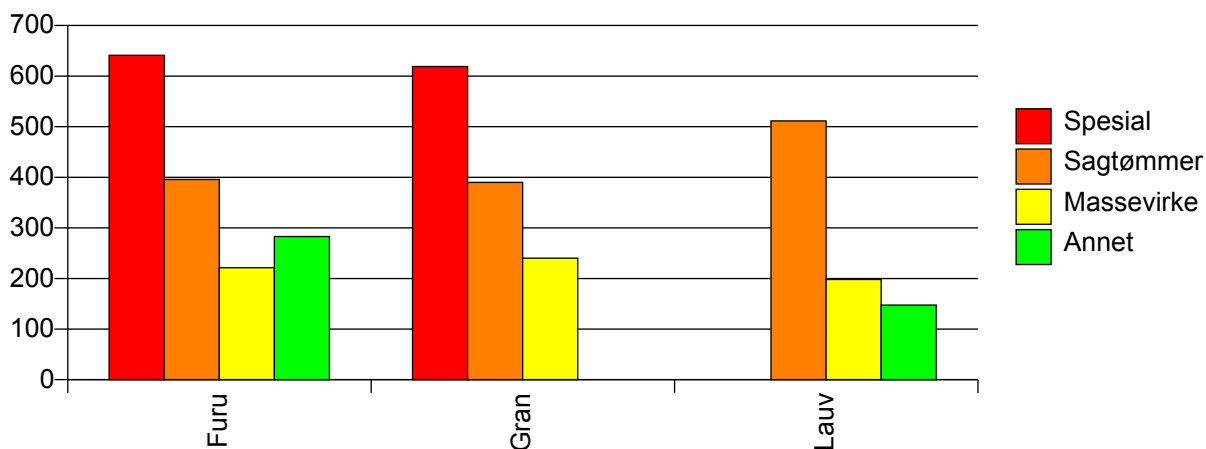
Volum (prosentfordelt)



## Gjennomsnittspris 2009 (kr/kbm)

	Spesial	Sagtømmer	Massevirke	Annet	Vrak	Snitt
<b>Furu</b>	641	396	221	283	0	<b>349</b>
<b>Gran</b>	619	390	240		0	<b>312</b>
<b>Lauv</b>		511	198	148		<b>189</b>
<b>Snitt</b>	<b>640</b>	<b>392</b>	<b>232</b>	<b>186</b>	<b>0</b>	<b>318</b>

Gjennomsnittspris (kr/kbm)

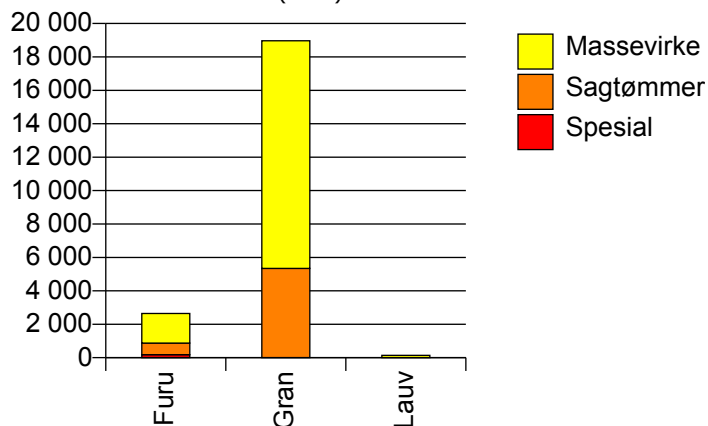


## 403 HAMAR

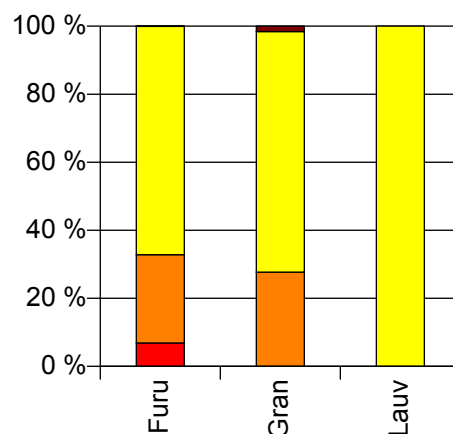
## Volum 2009 (kbm)

	Spesial	Sagtømmer	Massevirke	Vrak	Sum:
<b>Furu</b>	182	688	1 777	2	<b>2 649</b>
<b>Gran</b>		5 340	13 627	304	<b>19 271</b>
<b>Lauv</b>			137		<b>137</b>
<b>Sum:</b>	<b>182</b>	<b>6 028</b>	<b>15 541</b>	<b>306</b>	<b>22 057</b>

Volum (kbm)



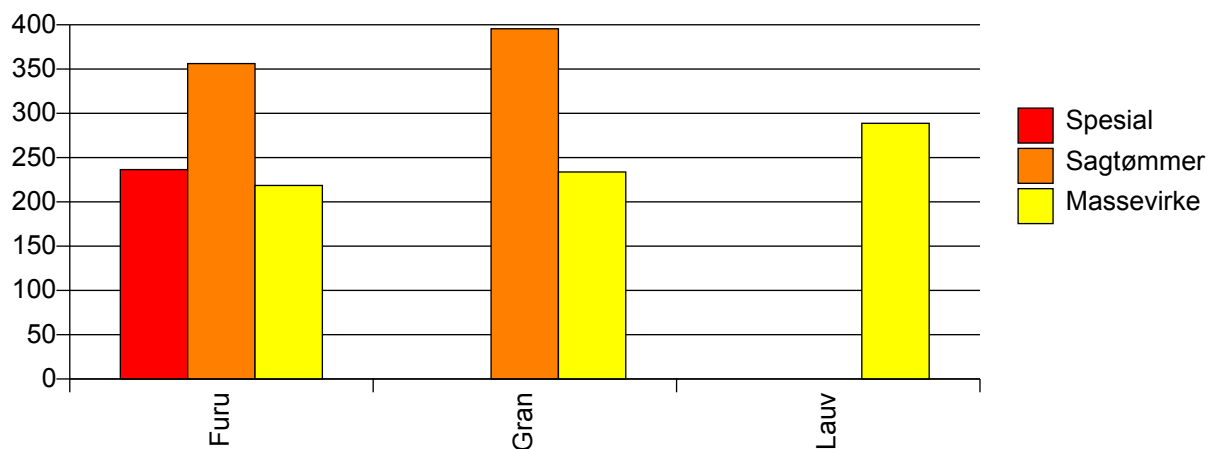
Volum (prosentfordelt)



## Gjennomsnittspris 2009 (kr/kbm)

	Spesial	Sagtømmer	Massevirke	Vrak	Snitt
<b>Furu</b>	237	356	219	0	<b>255</b>
<b>Gran</b>		396	234	0	<b>275</b>
<b>Lauv</b>			289		<b>289</b>
<b>Snitt</b>	<b>237</b>	<b>391</b>	<b>233</b>	<b>0</b>	<b>273</b>

Gjennomsnittspris (kr/kbm)

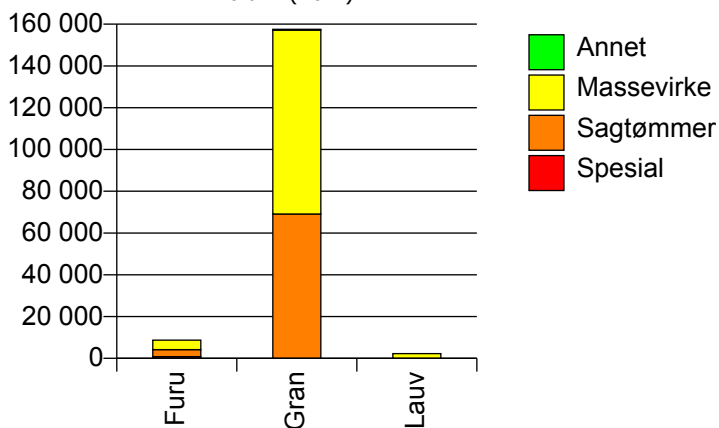


## 412 RINGSAKER

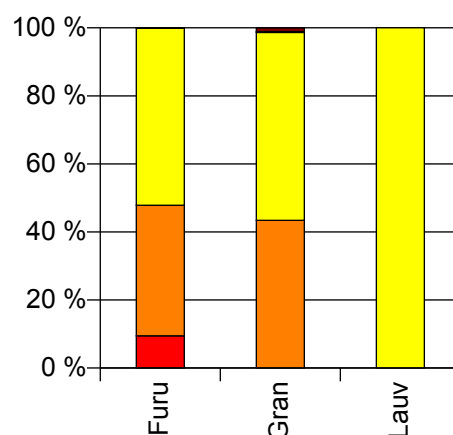
## Volum 2009 (kbm)

	Spesial	Sagtømmer	Massevirke	Annet	Vrak	Sum:
<b>Furu</b>	827	3 360	4 558		4	<b>8 749</b>
<b>Gran</b>		69 146	88 015	393	1 754	<b>159 308</b>
<b>Lauv</b>			2 295			<b>2 295</b>
<b>Sum:</b>	<b>827</b>	<b>72 506</b>	<b>94 868</b>	<b>393</b>	<b>1 758</b>	<b>170 352</b>

Volum (kbm)



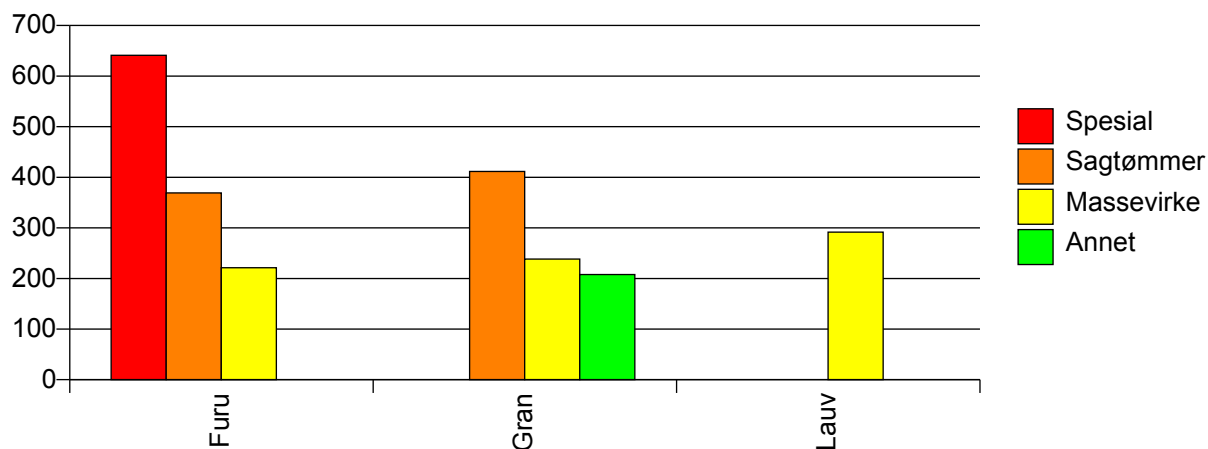
Volum (prosentfordelt)



## Gjennomsnittspris 2009 (kr/kbm)

	Spesial	Sagtømmer	Massevirke	Annet	Vrak	Snitt
<b>Furu</b>	641	369	221		0	<b>318</b>
<b>Gran</b>		412	238	208	0	<b>311</b>
<b>Lauv</b>			292			<b>292</b>
<b>Snitt</b>	<b>641</b>	<b>410</b>	<b>239</b>	<b>208</b>	<b>0</b>	<b>311</b>

Gjennomsnittspris (kr/kbm)

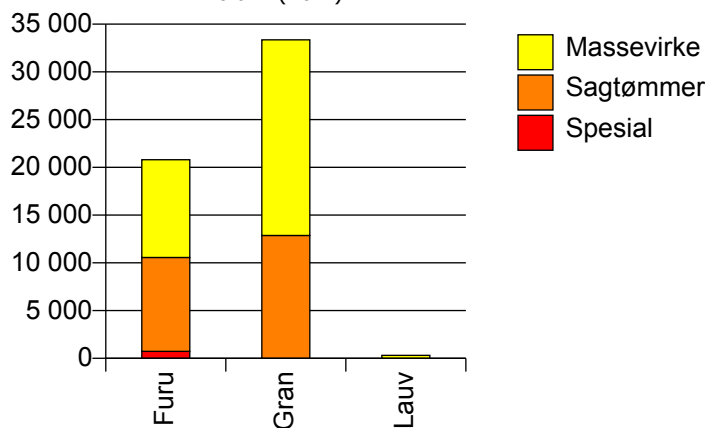


## 415 LØTEN

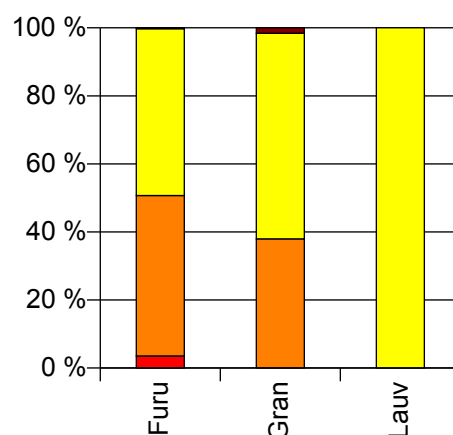
### Volum 2009 (kbm)

	Spesial	Sagtømmer	Massevirke	Vrak	Sum:
<b>Furu</b>	737	9 835	10 230	50	<b>20 852</b>
<b>Gran</b>		12 874	20 482	543	<b>33 899</b>
<b>Lauv</b>			308		<b>308</b>
<b>Sum:</b>	<b>737</b>	<b>22 709</b>	<b>31 020</b>	<b>593</b>	<b>55 059</b>

Volum (kbm)



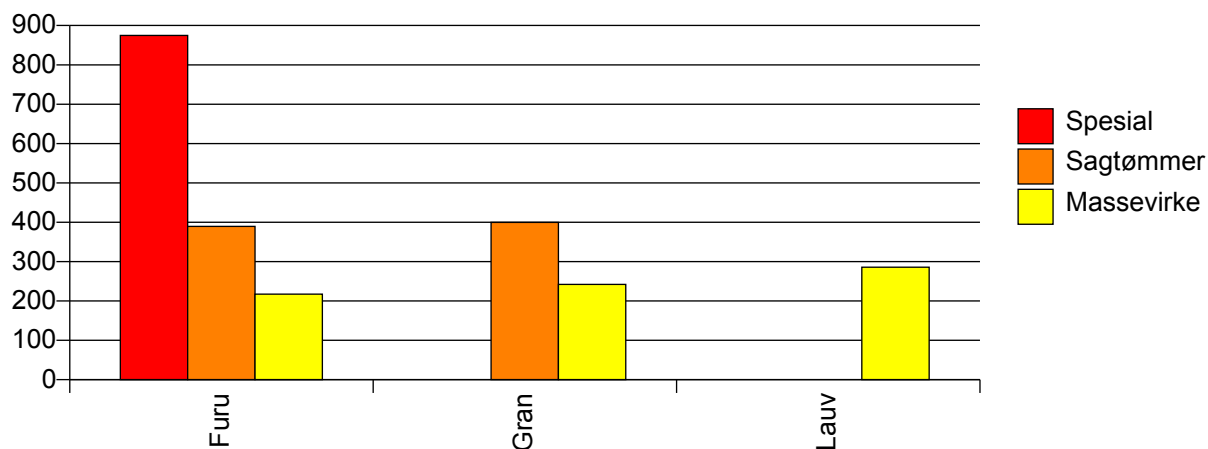
Volum (prosentfordelt)



### Gjennomsnittspris 2009 (kr/kbm)

	Spesial	Sagtømmer	Massevirke	Vrak	Snitt
<b>Furu</b>	875	390	217	0	<b>321</b>
<b>Gran</b>		400	242	0	<b>298</b>
<b>Lauv</b>			286		<b>286</b>
<b>Snitt</b>	<b>875</b>	<b>395</b>	<b>234</b>	<b>0</b>	<b>307</b>

Gjennomsnittspris (kr/kbm)

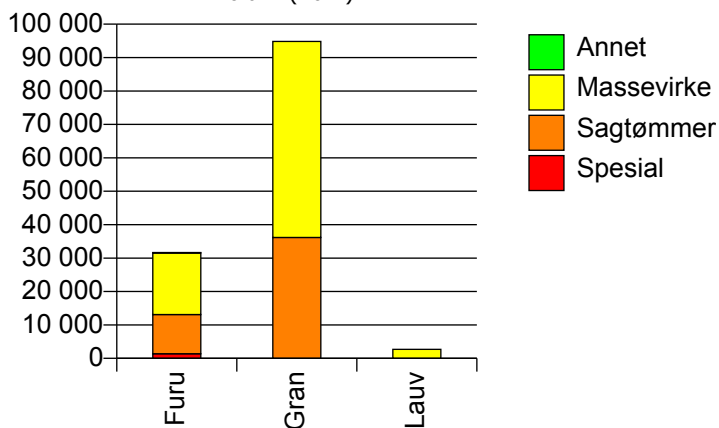


## 417 STANGE

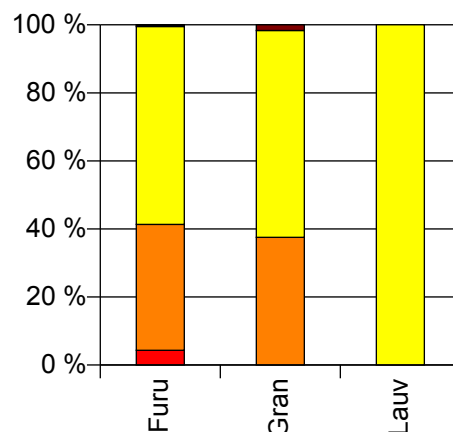
### Volum 2009 (kbm)

	Spesial	Sagtømmer	Massevirke	Annet	Vrak	Sum:
<b>Furu</b>	1 368	11 736	18 445	132	22	<b>31 703</b>
<b>Gran</b>	0	36 184	58 647	8	1 608	<b>96 447</b>
<b>Lauv</b>			2 713			<b>2 713</b>
<b>Sum:</b>	<b>1 368</b>	<b>47 920</b>	<b>79 805</b>	<b>140</b>	<b>1 630</b>	<b>130 863</b>

Volum (kbm)



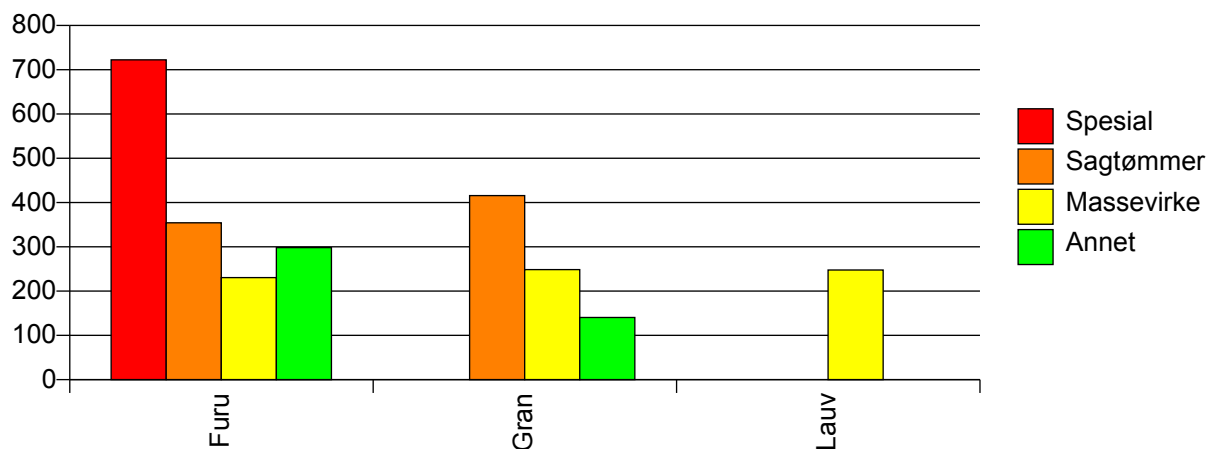
Volum (prosentfordelt)



### Gjennomsnittspris 2009 (kr/kbm)

	Spesial	Sagtømmer	Massevirke	Annet	Vrak	Snitt
<b>Furu</b>	723	354	231	298	0	<b>298</b>
<b>Gran</b>	#DIV/0	416	249	141	0	<b>307</b>
<b>Lauv</b>			248			<b>248</b>
<b>Snitt</b>	<b>723</b>	<b>401</b>	<b>245</b>	<b>289</b>	<b>0</b>	<b>304</b>

Gjennomsnittspris (kr/kbm)

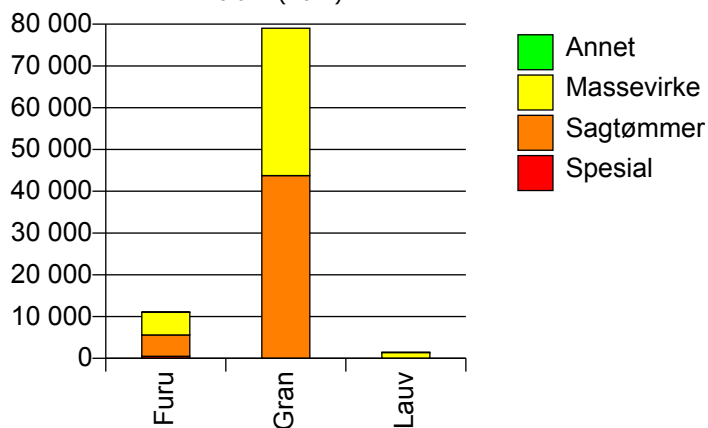


## 418 NORD-ODAL

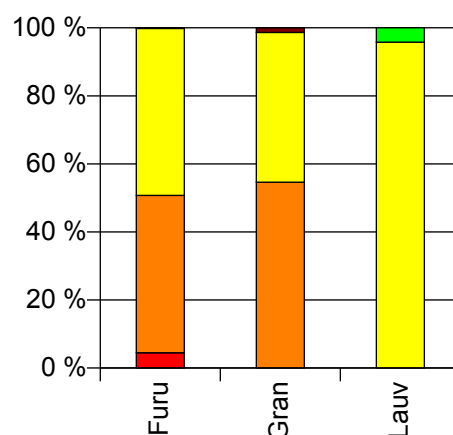
### Volum 2009 (kbm)

	Spesial	Sagtømmer	Massevirke	Annet	Vrak	Sum:
<b>Furu</b>	496	5 114	5 427	12	6	<b>11 055</b>
<b>Gran</b>		43 751	35 284		1 086	<b>80 121</b>
<b>Lauv</b>			1 388	61		<b>1 449</b>
<b>Sum:</b>	<b>496</b>	<b>48 865</b>	<b>42 099</b>	<b>73</b>	<b>1 092</b>	<b>92 625</b>

Volum (kbm)



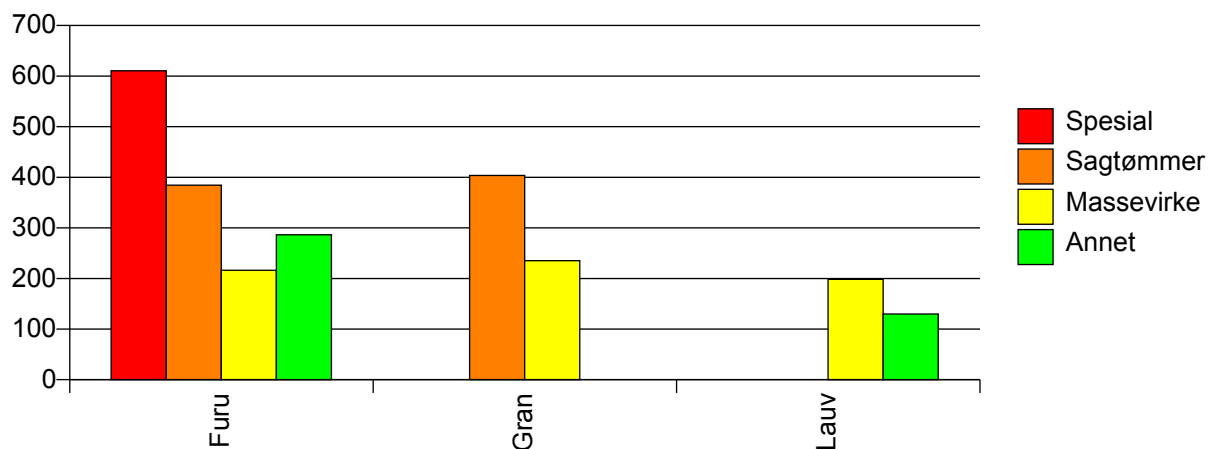
Volum (prosentfordelt)



### Gjennomsnittspris 2009 (kr/kbm)

	Spesial	Sagtømmer	Massevirke	Annet	Vrak	Snitt
<b>Furu</b>	611	384	216	286	0	<b>312</b>
<b>Gran</b>		404	235		0	<b>324</b>
<b>Lauv</b>			198	130		<b>196</b>
<b>Snitt</b>	<b>611</b>	<b>402</b>	<b>231</b>	<b>156</b>	<b>0</b>	<b>320</b>

Gjennomsnittspris (kr/kbm)



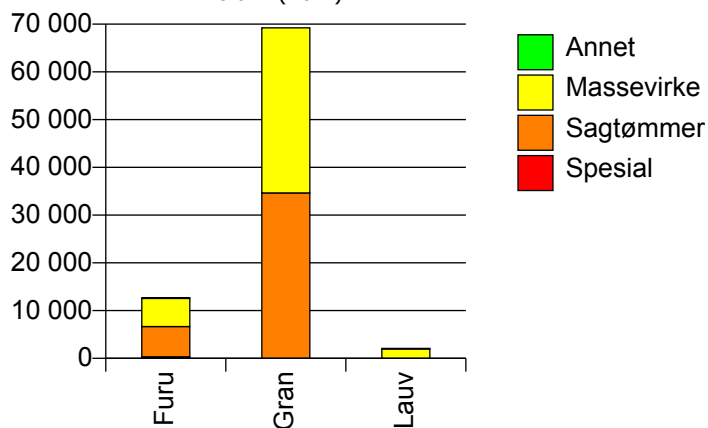


## 419 SØR-ODAL

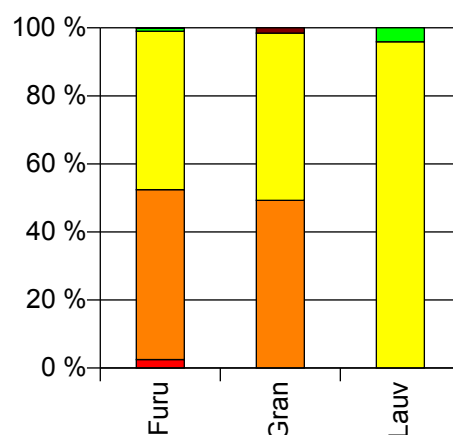
## Volum 2009 (kbm)

	Spesial	Sagtømmer	Massevirke	Annet	Vrak	Sum:
<b>Furu</b>	316	6 333	5 903	117	12	<b>12 681</b>
<b>Gran</b>		34 662	34 572		1 097	<b>70 331</b>
<b>Lauv</b>			1 983	85		<b>2 068</b>
<b>Sum:</b>	<b>316</b>	<b>40 995</b>	<b>42 458</b>	<b>202</b>	<b>1 109</b>	<b>85 080</b>

Volum (kbm)



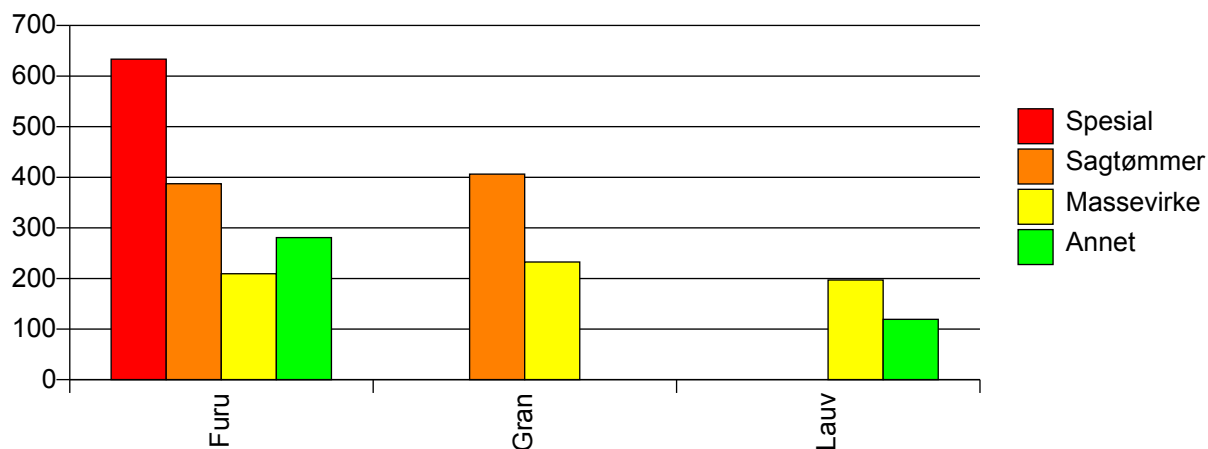
Volum (prosentfordelt)



## Gjennomsnittspris 2009 (kr/kbm)

	Spesial	Sagtømmer	Massevirke	Annet	Vrak	Snitt
<b>Furu</b>	633	387	209	281	0	<b>309</b>
<b>Gran</b>		406	232		0	<b>315</b>
<b>Lauv</b>			197	119		<b>194</b>
<b>Snitt</b>	<b>633</b>	<b>403</b>	<b>228</b>	<b>213</b>	<b>0</b>	<b>311</b>

Gjennomsnittspris (kr/kbm)

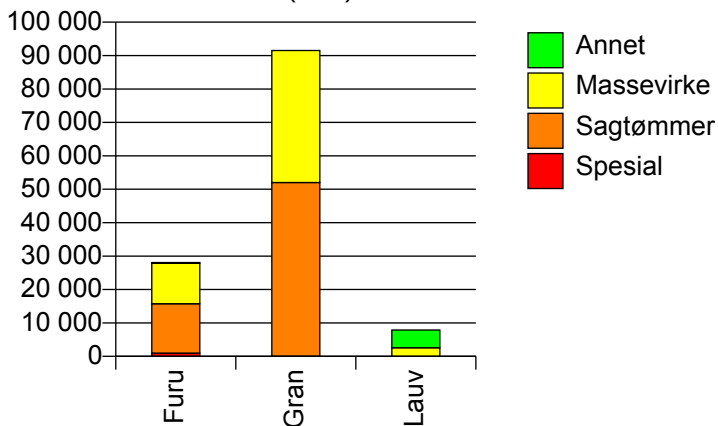


## 420 EIDSKOG

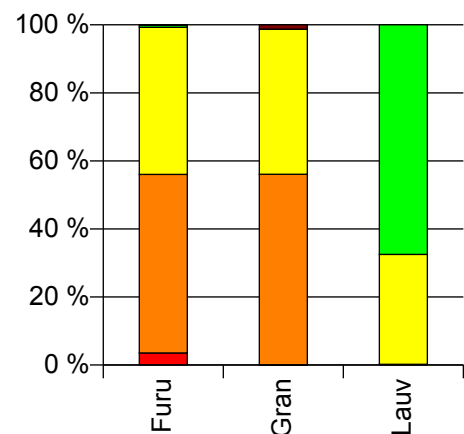
### Volum 2009 (kbm)

	Spesial	Sagtømmer	Massevirke	Annet	Vrak	Sum:
<b>Furu</b>	992	14 743	12 136	198	4	<b>28 073</b>
<b>Gran</b>	45	51 965	39 526		1 185	<b>92 721</b>
<b>Lauv</b>		17	2 546	5 315		<b>7 878</b>
<b>Sum:</b>	<b>1 037</b>	<b>66 725</b>	<b>54 208</b>	<b>5 513</b>	<b>1 189</b>	<b>128 672</b>

Volum (kbm)



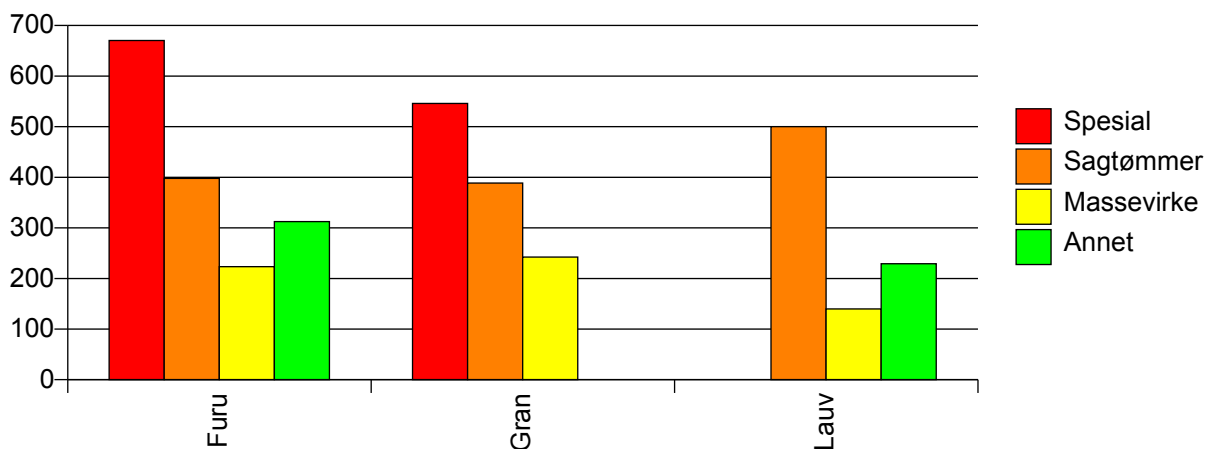
Volum (prosentfordelt)



### Gjennomsnittspris 2009 (kr/kbm)

	Spesial	Sagtømmer	Massevirke	Annet	Vrak	Snitt
<b>Furu</b>	670	398	223	312	0	<b>331</b>
<b>Gran</b>	546	389	242		0	<b>321</b>
<b>Lauv</b>		500	140	229		<b>201</b>
<b>Snitt</b>	<b>665</b>	<b>391</b>	<b>233</b>	<b>232</b>	<b>0</b>	<b>316</b>

Gjennomsnittspris (kr/kbm)

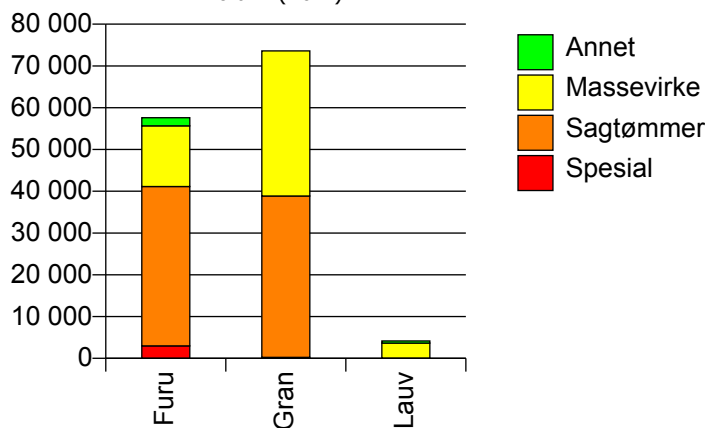


## 423 GRUE

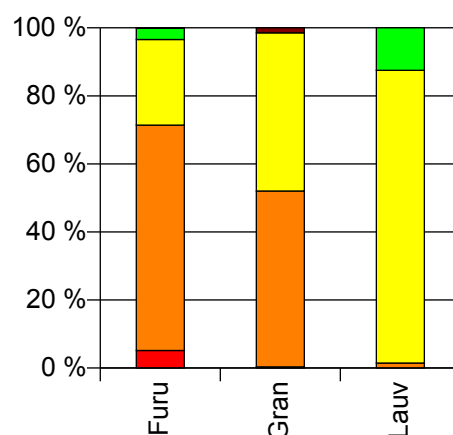
## Volum 2009 (kbm)

	Spesial	Sagtømmer	Massevirke	Annet	Vrak	Sum:
<b>Furu</b>	2 980	38 168	14 523	1 940	29	<b>57 640</b>
<b>Gran</b>	246	38 620	34 732		1 090	<b>74 688</b>
<b>Lauv</b>		62	3 594	522		<b>4 178</b>
<b>Sum:</b>	<b>3 226</b>	<b>76 850</b>	<b>52 849</b>	<b>2 462</b>	<b>1 119</b>	<b>136 506</b>

Volum (kbm)



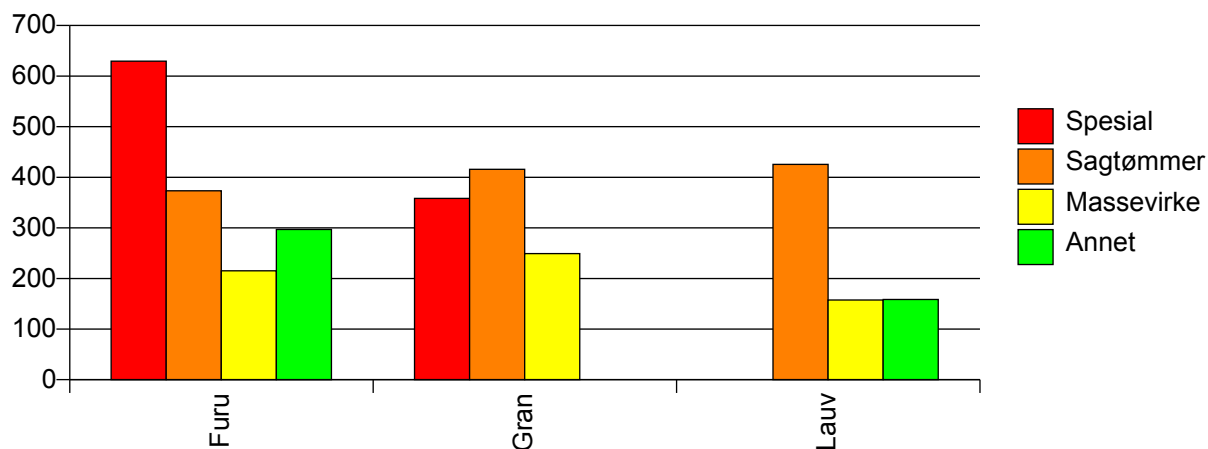
Volum (prosentfordelt)



## Gjennomsnittspris 2009 (kr/kbm)

	Spesial	Sagtømmer	Massevirke	Annet	Vrak	Snitt
<b>Furu</b>	629	373	215	297	0	<b>344</b>
<b>Gran</b>	358	416	249		0	<b>332</b>
<b>Lauv</b>		425	157	158		<b>161</b>
<b>Snitt</b>	<b>609</b>	<b>395</b>	<b>234</b>	<b>268</b>	<b>0</b>	<b>332</b>

Gjennomsnittspris (kr/kbm)

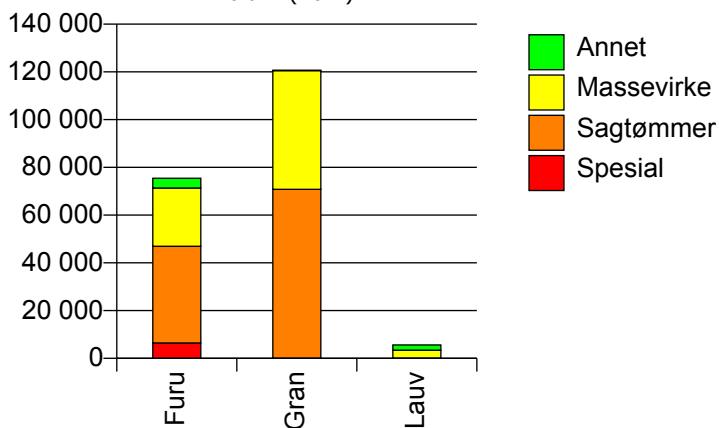


## 425 ÅSNES

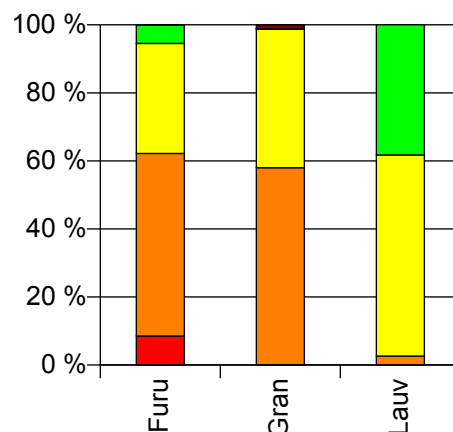
## Volum 2009 (kbm)

	Spesial	Sagtømmer	Massevirke	Annet	Vrak	Sum:
<b>Furu</b>	6 439	40 516	24 432	4 083	31	<b>75 501</b>
<b>Gran</b>	60	70 743	49 748	138	1 391	<b>122 080</b>
<b>Lauv</b>		148	3 308	2 141		<b>5 597</b>
<b>Sum:</b>	<b>6 499</b>	<b>111 407</b>	<b>77 488</b>	<b>6 362</b>	<b>1 422</b>	<b>203 178</b>

Volum (kbm)



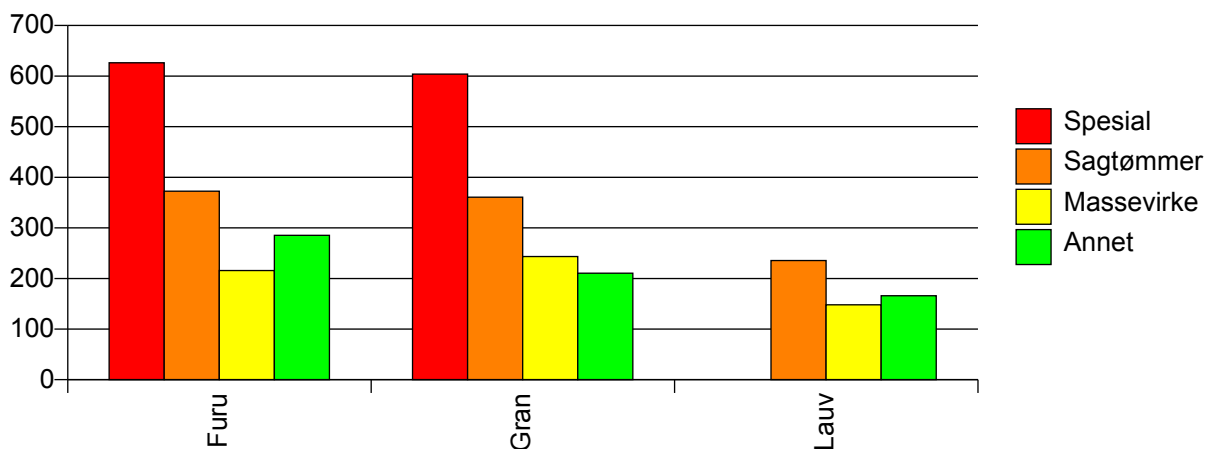
Volum (prosentfordelt)



## Gjennomsnittspris 2009 (kr/kbm)

	Spesial	Sagtømmer	Massevirke	Annet	Vrak	Snitt
<b>Furu</b>	626	372	216	285	0	<b>339</b>
<b>Gran</b>	604	361	244	211	0	<b>309</b>
<b>Lauv</b>		235	148	166		<b>157</b>
<b>Snitt</b>	<b>626</b>	<b>365</b>	<b>231</b>	<b>244</b>	<b>0</b>	<b>316</b>

Gjennomsnittspris (kr/kbm)

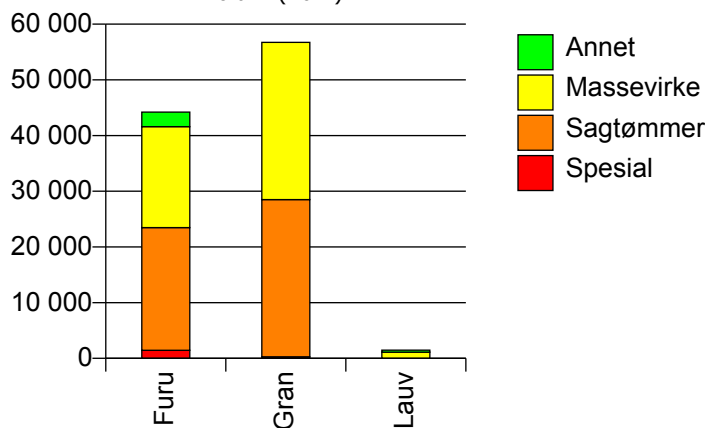


## 426 VÅLER I SOLØR

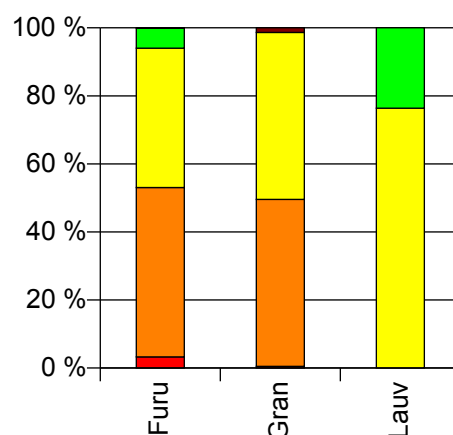
## Volum 2009 (kbm)

	Spesial	Sagtømmer	Massevirke	Annet	Vrak	Sum:
<b>Furu</b>	1 454	22 016	18 131	2 603	47	<b>44 251</b>
<b>Gran</b>	286	28 216	28 226		783	<b>57 511</b>
<b>Lauv</b>			1 120	346		<b>1 466</b>
<b>Sum:</b>	<b>1 740</b>	<b>50 232</b>	<b>47 477</b>	<b>2 949</b>	<b>830</b>	<b>103 228</b>

Volum (kbm)



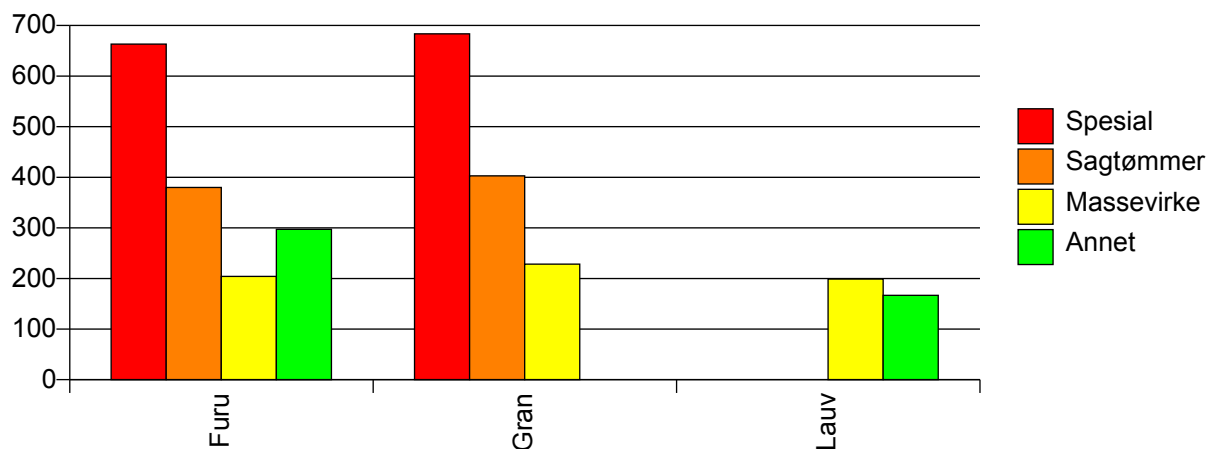
Volum (prosentfordelt)



## Gjennomsnittspris 2009 (kr/kbm)

	Spesial	Sagtømmer	Massevirke	Annet	Vrak	Snitt
<b>Furu</b>	663	380	204	297	0	<b>312</b>
<b>Gran</b>	684	403	228		0	<b>313</b>
<b>Lauv</b>			199	167		<b>191</b>
<b>Snitt</b>	<b>667</b>	<b>393</b>	<b>218</b>	<b>282</b>	<b>0</b>	<b>311</b>

Gjennomsnittspris (kr/kbm)

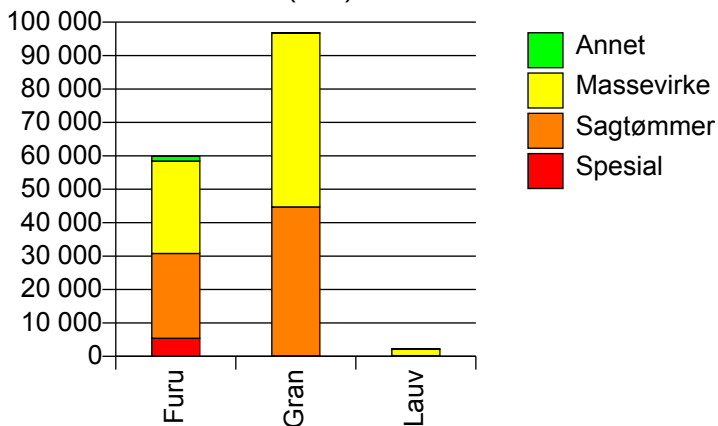


# 427 ELVERUM

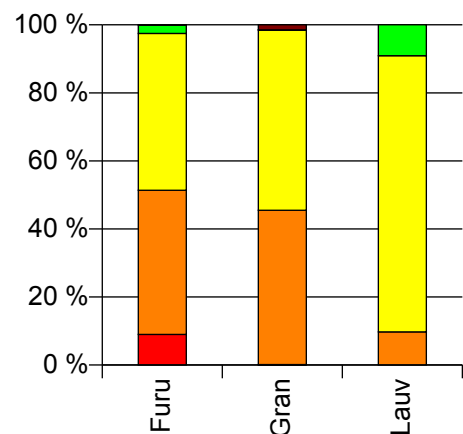
## Volum 2009 (kbm)

	Spesial	Sagtømmer	Massevirke	Annet	Vrak	Sum:
<b>Furu</b>	5 393	25 407	27 625	1 469	55	<b>59 949</b>
<b>Gran</b>	126	44 574	52 035	51	1 444	<b>98 230</b>
<b>Lauv</b>		224	1 871	209		<b>2 304</b>
<b>Sum:</b>	<b>5 519</b>	<b>70 205</b>	<b>81 531</b>	<b>1 729</b>	<b>1 499</b>	<b>160 483</b>

Volum (kbm)



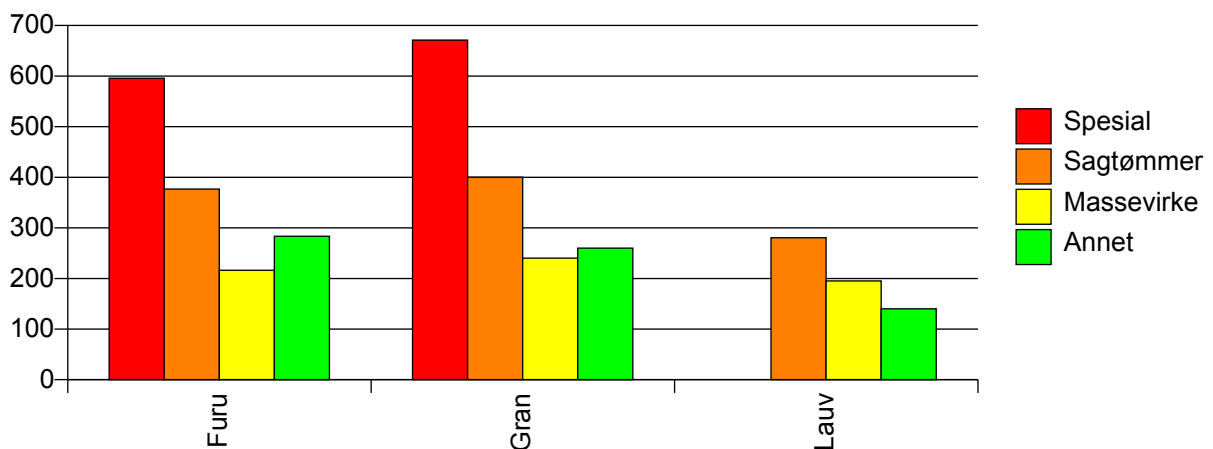
Volum (prosentfordelt)



## Gjennomsnittspris 2009 (kr/kbm)

	Spesial	Sagtømmer	Massevirke	Annet	Vrak	Snitt
<b>Furu</b>	596	377	216	283	0	<b>320</b>
<b>Gran</b>	671	400	240	260	0	<b>310</b>
<b>Lauv</b>		281	195	140		<b>199</b>
<b>Snitt</b>	<b>598</b>	<b>391</b>	<b>231</b>	<b>265</b>	<b>0</b>	<b>312</b>

Gjennomsnittspris (kr/kbm)

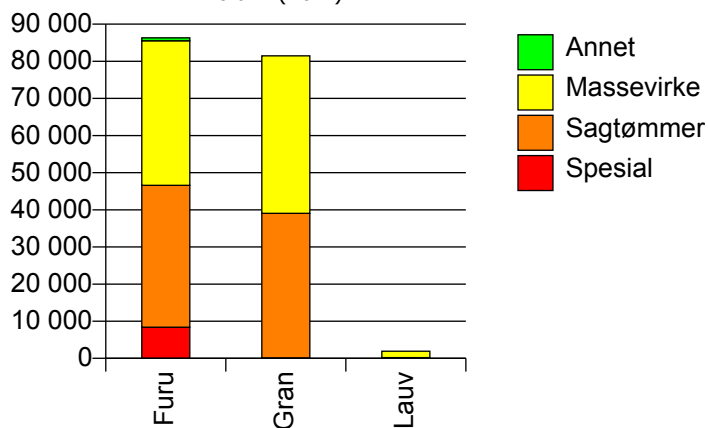


## 428 TRYSIL

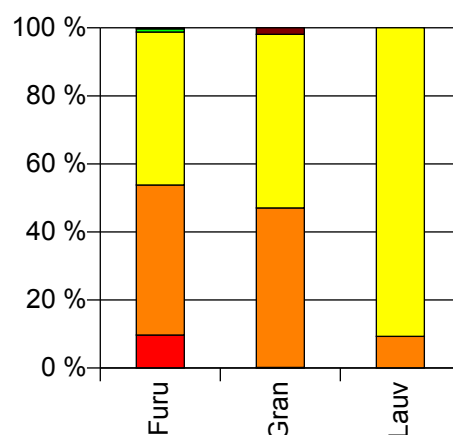
### Volum 2009 (kbm)

	Spesial	Sagtømmer	Massevirke	Annet	Vrak	Sum:
<b>Furu</b>	8 393	38 214	38 909	814	269	<b>86 599</b>
<b>Gran</b>	139	38 928	42 389		1 578	<b>83 034</b>
<b>Lauv</b>		180	1 750			<b>1 930</b>
<b>Sum:</b>	<b>8 532</b>	<b>77 322</b>	<b>83 048</b>	<b>814</b>	<b>1 847</b>	<b>171 563</b>

Volum (kbm)



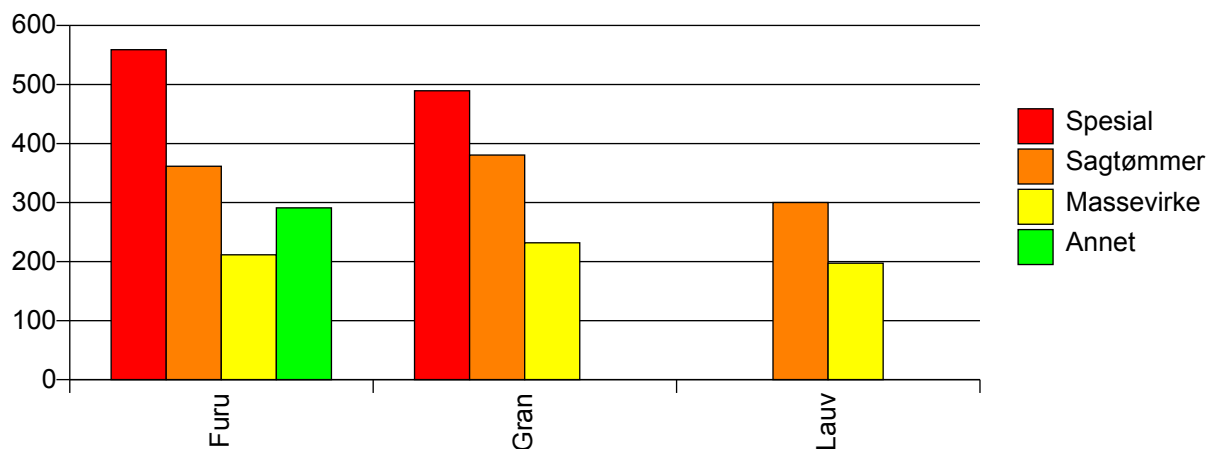
Volum (prosentfordelt)



### Gjennomsnittspris 2009 (kr/kbm)

	Spesial	Sagtømmer	Massevirke	Annet	Vrak	Snitt
<b>Furu</b>	559	362	212	291	0	<b>311</b>
<b>Gran</b>	489	381	232		0	<b>298</b>
<b>Lauv</b>		300	197			<b>207</b>
<b>Snitt</b>	<b>558</b>	<b>371</b>	<b>222</b>	<b>291</b>	<b>0</b>	<b>304</b>

Gjennomsnittspris (kr/kbm)

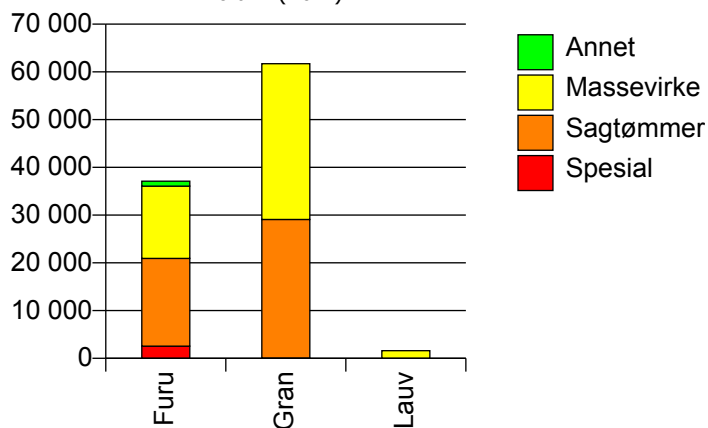


## 429 ÅMOT

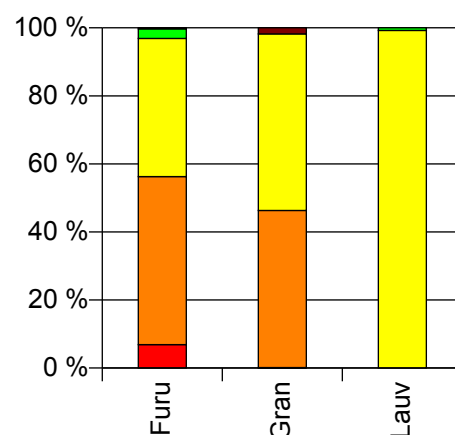
## Volum 2009 (kbm)

	Spesial	Sagtømmer	Massevirke	Annet	Vrak	Sum:
<b>Furu</b>	2 561	18 384	15 118	1 045	112	<b>37 220</b>
<b>Gran</b>	78	29 017	32 610		1 119	<b>62 824</b>
<b>Lauv</b>			1 594	12		<b>1 606</b>
<b>Sum:</b>	<b>2 639</b>	<b>47 401</b>	<b>49 322</b>	<b>1 057</b>	<b>1 231</b>	<b>101 650</b>

Volum (kbm)



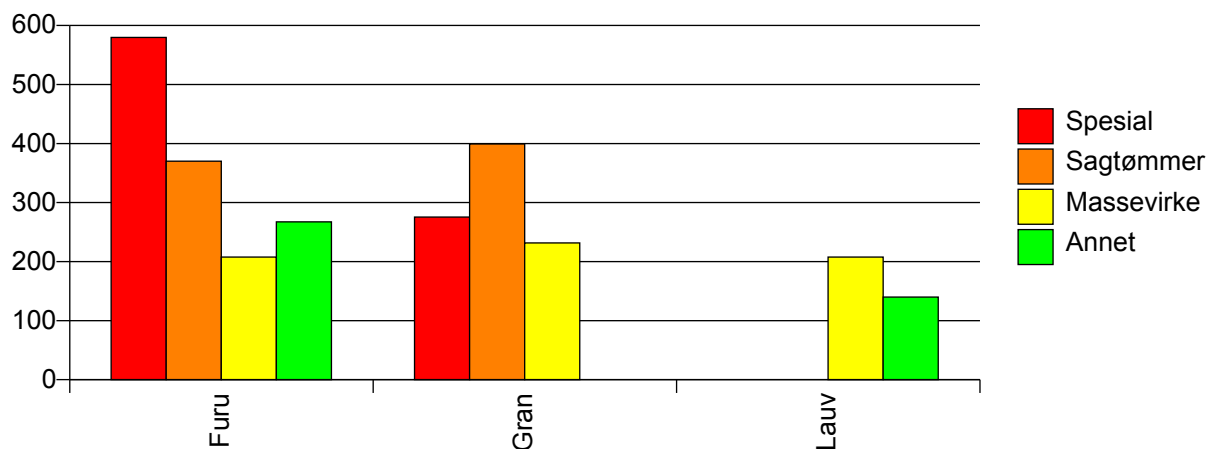
Volum (prosentfordelt)



## Gjennomsnittspris 2009 (kr/kbm)

	Spesial	Sagtømmer	Massevirke	Annet	Vrak	Snitt
<b>Furu</b>	580	370	208	267	0	<b>315</b>
<b>Gran</b>	275	399	232		0	<b>305</b>
<b>Lauv</b>			208	140		<b>207</b>
<b>Snitt</b>	<b>571</b>	<b>388</b>	<b>224</b>	<b>266</b>	<b>0</b>	<b>307</b>

Gjennomsnittspris (kr/kbm)



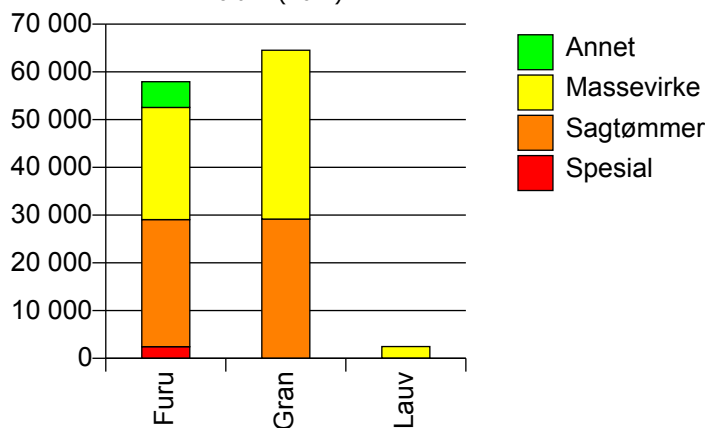


## 430 STOR-ELVDAL

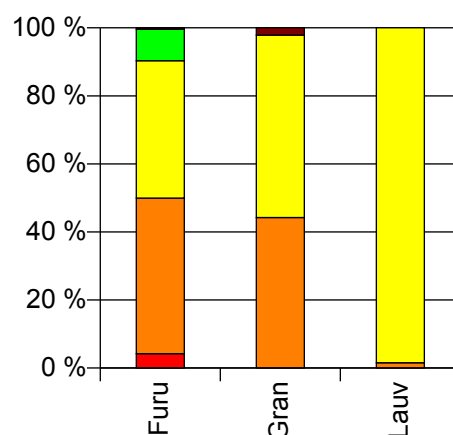
## Volum 2009 (kbm)

	Spesial	Sagtømmer	Massevirke	Annet	Vrak	Sum:
<b>Furu</b>	2 453	26 621	23 490	5 381	232	<b>58 177</b>
<b>Gran</b>	1	29 180	35 369		1 407	<b>65 957</b>
<b>Lauv</b>		38	2 440			<b>2 478</b>
<b>Sum:</b>	<b>2 454</b>	<b>55 839</b>	<b>61 299</b>	<b>5 381</b>	<b>1 639</b>	<b>126 612</b>

Volum (kbm)



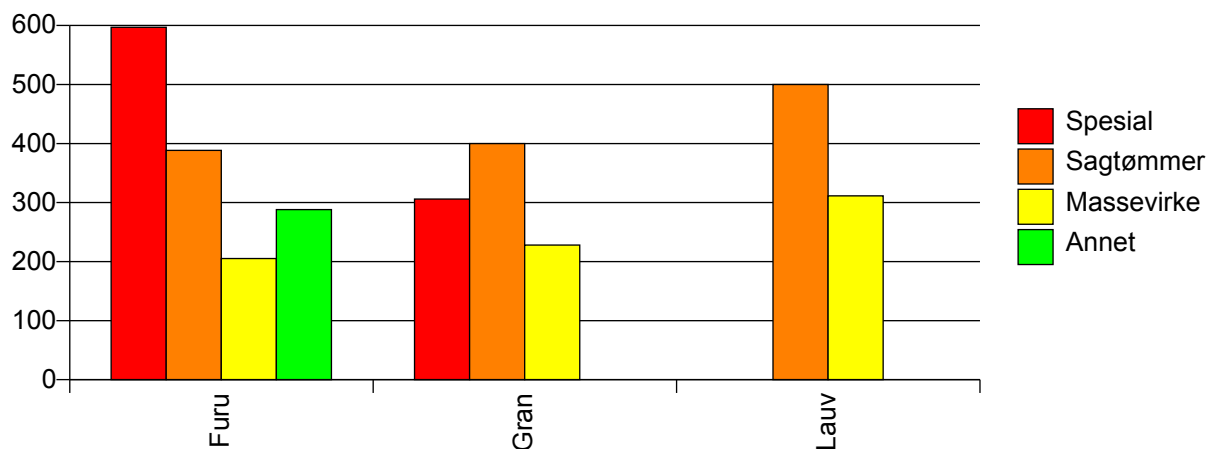
Volum (prosentfordelt)



## Gjennomsnittspris 2009 (kr/kbm)

	Spesial	Sagtømmer	Massevirke	Annet	Vrak	Snitt
<b>Furu</b>	597	389	205	288	0	<b>312</b>
<b>Gran</b>	306	400	228		0	<b>299</b>
<b>Lauv</b>		500	311			<b>314</b>
<b>Snitt</b>	<b>597</b>	<b>395</b>	<b>223</b>	<b>288</b>	<b>0</b>	<b>306</b>

Gjennomsnittspris (kr/kbm)

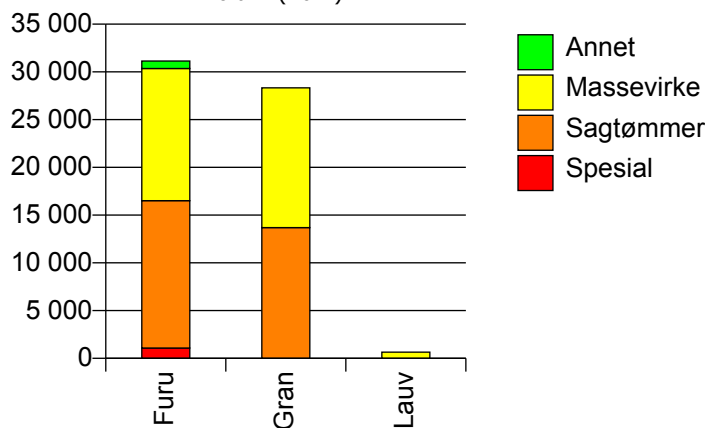


## 432 RENDALEN

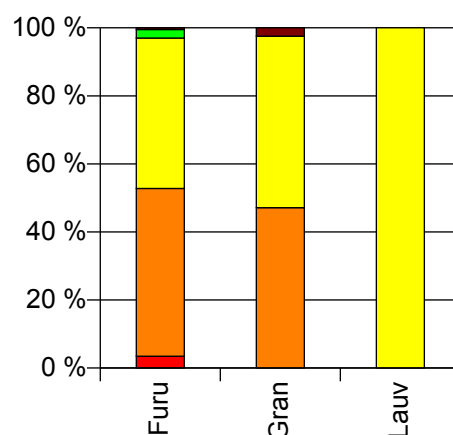
## Volum 2009 (kbm)

	Spesial	Sagtømmer	Massevirke	Annet	Vrak	Sum:
<b>Furu</b>	1 086	15 433	13 841	784	156	<b>31 300</b>
<b>Gran</b>	0	13 688	14 648		707	<b>29 043</b>
<b>Lauv</b>			652			<b>652</b>
<b>Sum:</b>	<b>1 086</b>	<b>29 121</b>	<b>29 141</b>	<b>784</b>	<b>863</b>	<b>60 995</b>

Volum (kbm)



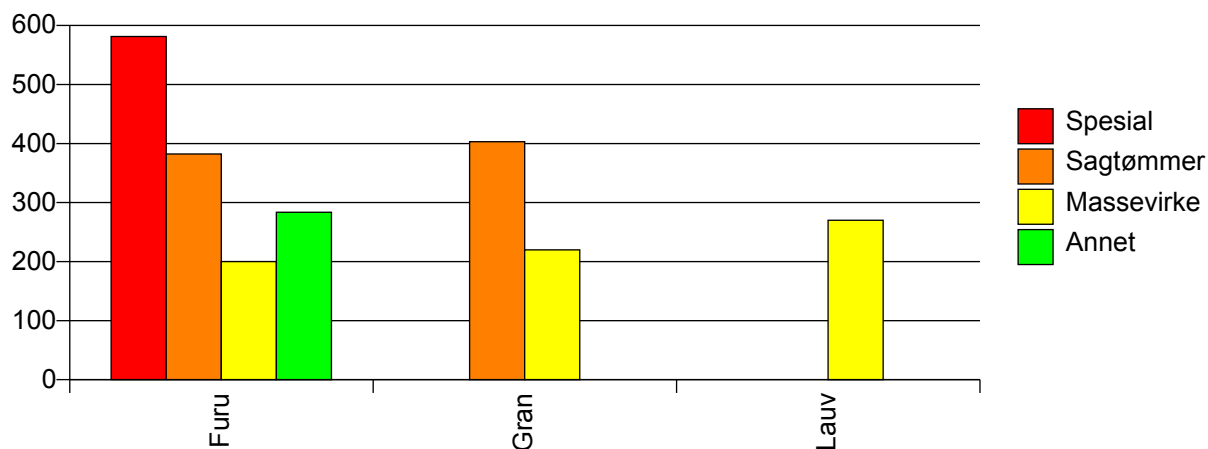
Volum (prosentfordelt)



## Gjennomsnittspris 2009 (kr/kbm)

	Spesial	Sagtømmer	Massevirke	Annet	Vrak	Snitt
<b>Furu</b>	581	382	200	284	0	<b>304</b>
<b>Gran</b>	#DIV/0	403	220		0	<b>301</b>
<b>Lauv</b>			270			<b>270</b>
<b>Snitt</b>	<b>581</b>	<b>392</b>	<b>212</b>	<b>284</b>	<b>0</b>	<b>302</b>

Gjennomsnittspris (kr/kbm)

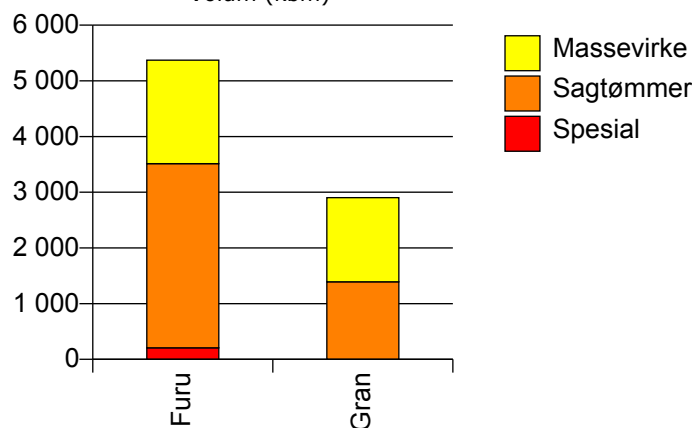


## 434 ENGERDAL

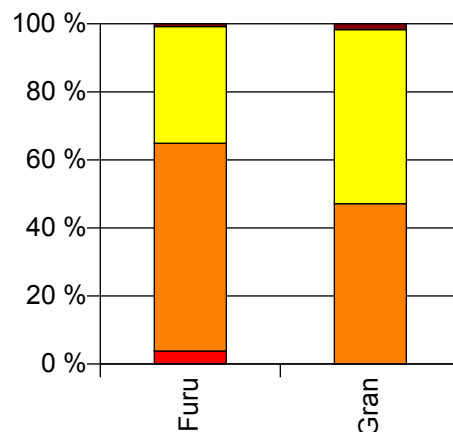
## Volum 2009 (kbm)

	Spesial	Sagtømmer	Massevirke	Vrak	Sum:
<b>Furu</b>	208	3 306	1 858	43	<b>5 415</b>
<b>Gran</b>		1 393	1 511	50	<b>2 954</b>
<b>Sum:</b>	<b>208</b>	<b>4 699</b>	<b>3 369</b>	<b>93</b>	<b>8 369</b>

Volum (kbm)



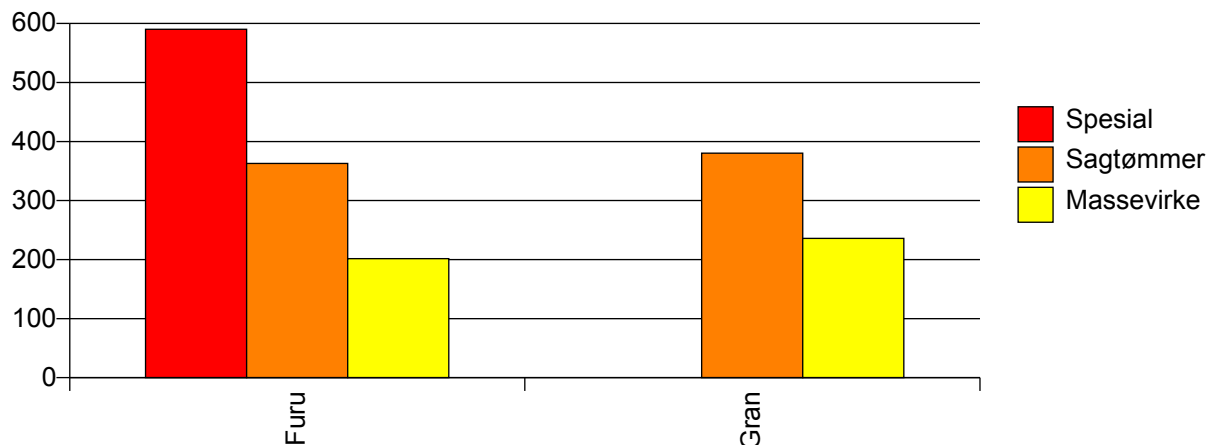
Volum (prosentfordelt)



## Gjennomsnittspris 2009 (kr/kbm)

	Spesial	Sagtømmer	Massevirke	Vrak	Snitt
<b>Furu</b>	590	363	202	0	<b>313</b>
<b>Gran</b>		380	236	0	<b>300</b>
<b>Snitt</b>	<b>590</b>	<b>368</b>	<b>217</b>	<b>0</b>	<b>309</b>

Gjennomsnittspris (kr/kbm)

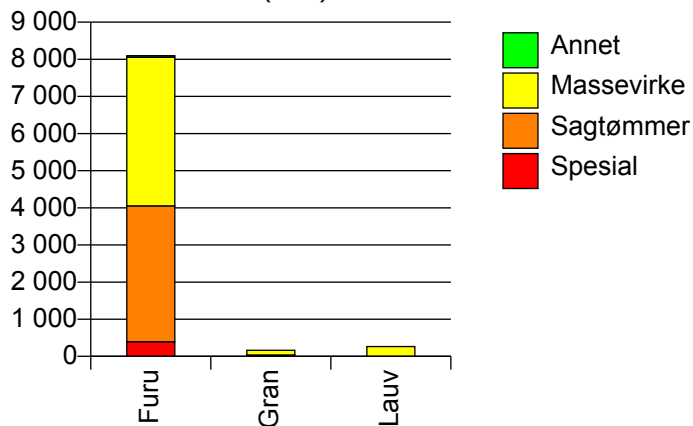


## 436 TOLGA

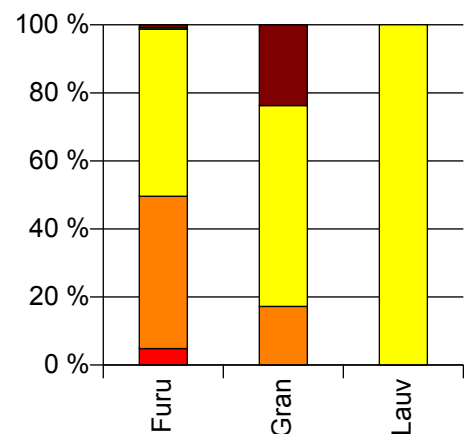
## Volum 2009 (kbm)

	Spesial	Sagtømmer	Massevirke	Annet	Vrak	Sum:
<b>Furu</b>	394	3 658	4 007	38	68	<b>8 165</b>
<b>Gran</b>		37	127		51	<b>215</b>
<b>Lauv</b>			264			<b>264</b>
<b>Sum:</b>	<b>394</b>	<b>3 695</b>	<b>4 398</b>	<b>38</b>	<b>119</b>	<b>8 644</b>

Volum (kbm)



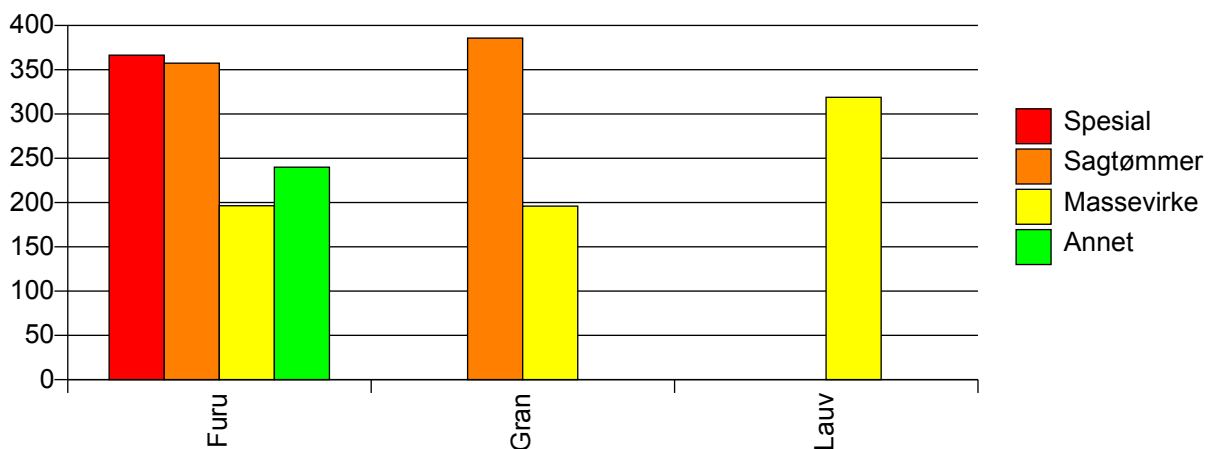
Volum (prosentfordelt)



## Gjennomsnittspris 2009 (kr/kbm)

	Spesial	Sagtømmer	Massevirke	Annet	Vrak	Snitt
<b>Furu</b>	367	357	196	240	0	<b>275</b>
<b>Gran</b>		386	196		0	<b>182</b>
<b>Lauv</b>			319			<b>319</b>
<b>Snitt</b>	<b>367</b>	<b>358</b>	<b>204</b>	<b>240</b>	<b>0</b>	<b>274</b>

Gjennomsnittspris (kr/kbm)

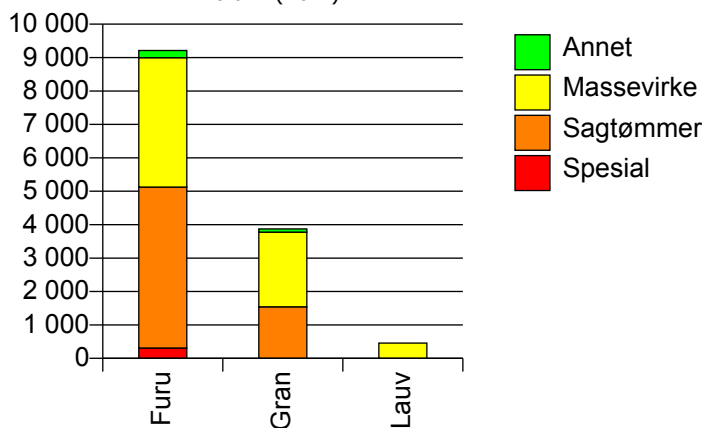


## 437 TYNSET

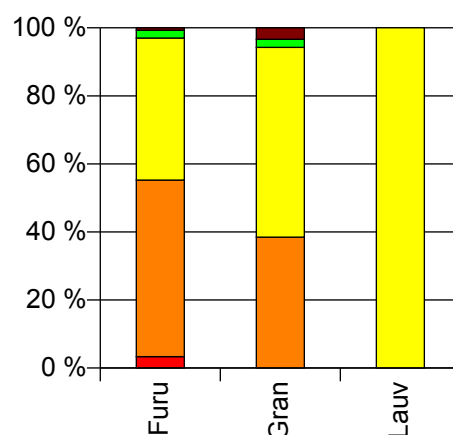
## Volum 2009 (kbm)

	Spesial	Sagtømmer	Massevirke	Annet	Vrak	Sum:
<b>Furu</b>	310	4 817	3 870	214	66	<b>9 277</b>
<b>Gran</b>		1 542	2 235	96	134	<b>4 007</b>
<b>Lauv</b>			458			<b>458</b>
<b>Sum:</b>	<b>310</b>	<b>6 359</b>	<b>6 563</b>	<b>310</b>	<b>200</b>	<b>13 742</b>

Volum (kbm)



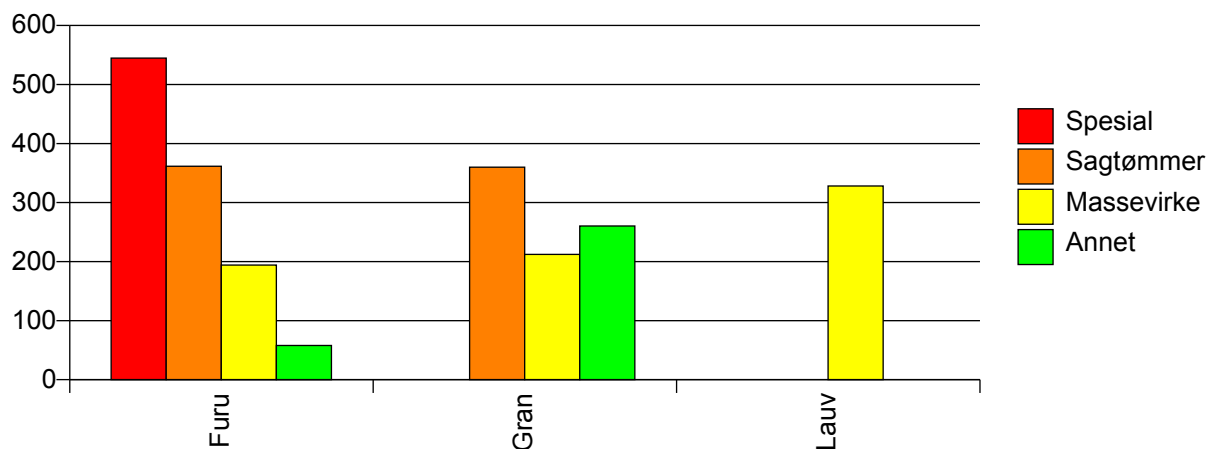
Volum (prosentfordelt)



## Gjennomsnittspris 2009 (kr/kbm)

	Spesial	Sagtømmer	Massevirke	Annet	Vrak	Snitt
<b>Furu</b>	545	362	194	58	0	<b>288</b>
<b>Gran</b>		360	212	260	0	<b>263</b>
<b>Lauv</b>			328			<b>328</b>
<b>Snitt</b>	<b>545</b>	<b>361</b>	<b>210</b>	<b>121</b>	<b>0</b>	<b>282</b>

Gjennomsnittspris (kr/kbm)

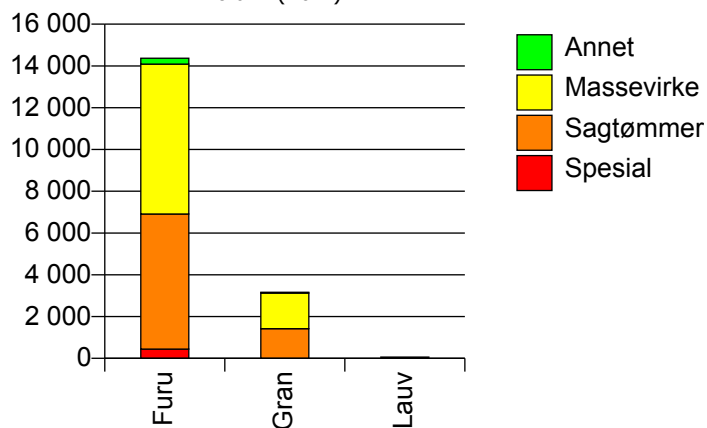


## 438 ALVDAL

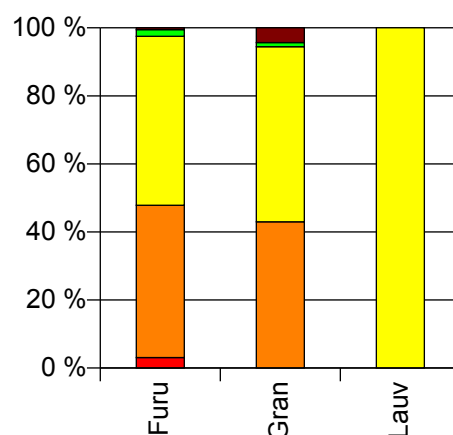
## Volum 2009 (kbm)

	Spesial	Sagtømmer	Massevirke	Annet	Vrak	Sum:
<b>Furu</b>	442	6 468	7 176	284	75	<b>14 445</b>
<b>Gran</b>		1 422	1 703	40	143	<b>3 308</b>
<b>Lauv</b>			63			<b>63</b>
<b>Sum:</b>	<b>442</b>	<b>7 890</b>	<b>8 942</b>	<b>324</b>	<b>218</b>	<b>17 816</b>

Volum (kbm)



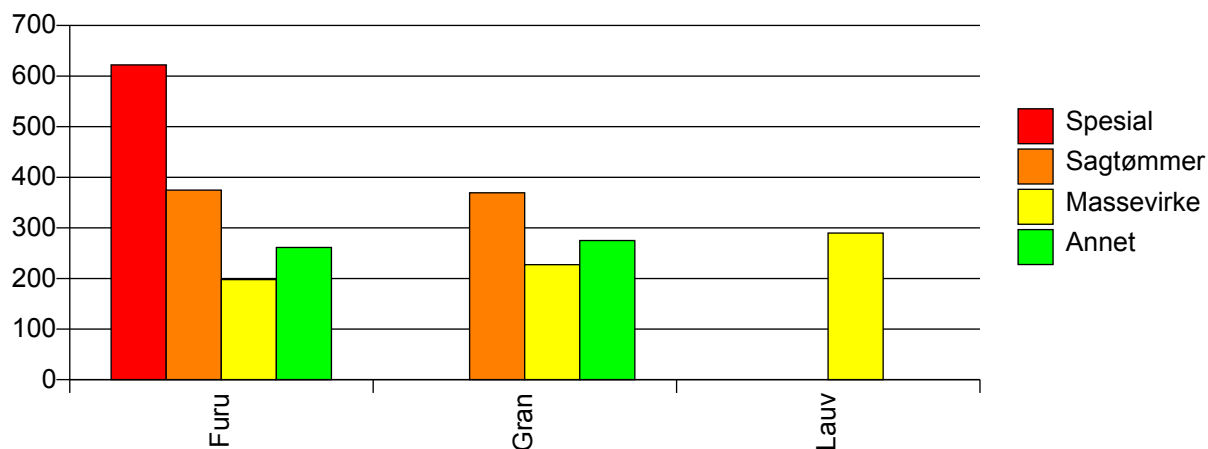
Volum (prosentfordelt)



## Gjennomsnittspris 2009 (kr/kbm)

	Spesial	Sagtømmer	Massevirke	Annet	Vrak	Snitt
<b>Furu</b>	622	375	198	261	0	<b>290</b>
<b>Gran</b>		369	227	275	0	<b>279</b>
<b>Lauv</b>			290			<b>290</b>
<b>Snitt</b>	<b>622</b>	<b>374</b>	<b>204</b>	<b>263</b>	<b>0</b>	<b>288</b>

Gjennomsnittspris (kr/kbm)

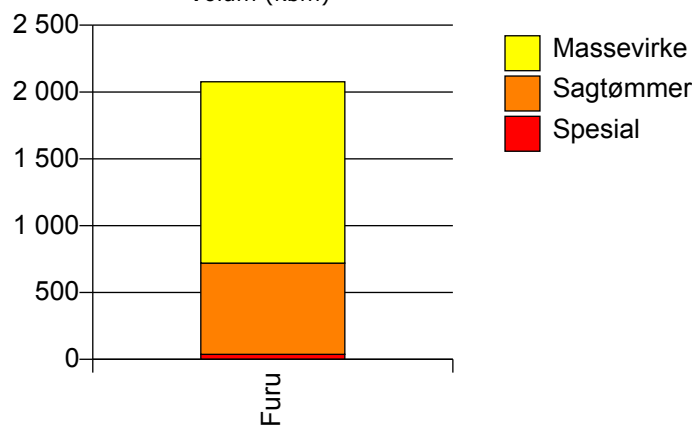


## 439 FOLLDAL

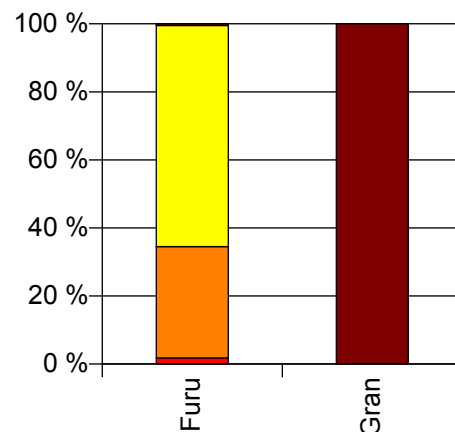
## Volum 2009 (kbm)

	Spesial	Sagtømmer	Massevirke	Vrak	Sum:
<b>Furu</b>	37	683	1 357	10	<b>2 087</b>
<b>Gran</b>				18	<b>18</b>
<b>Sum:</b>	<b>37</b>	<b>683</b>	<b>1 357</b>	<b>28</b>	<b>2 105</b>

Volum (kbm)



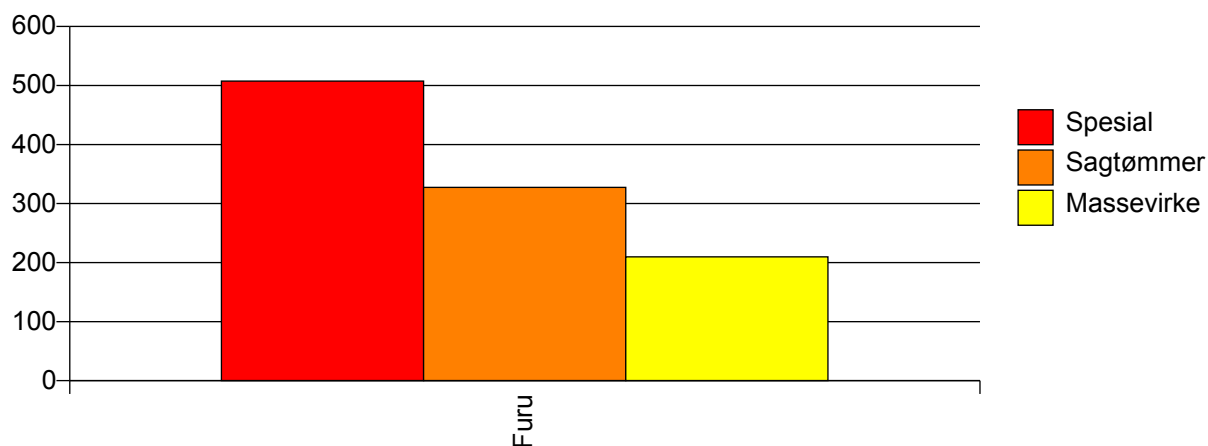
Volum (prosentfordelt)



## Gjennomsnittspris 2009 (kr/kbm)

	Spesial	Sagtømmer	Massevirke	Vrak	Snitt
<b>Furu</b>	507	327	210	0	<b>253</b>
<b>Gran</b>				0	<b>0</b>
<b>Snitt</b>	<b>507</b>	<b>327</b>	<b>210</b>	<b>0</b>	<b>250</b>

Gjennomsnittspris (kr/kbm)

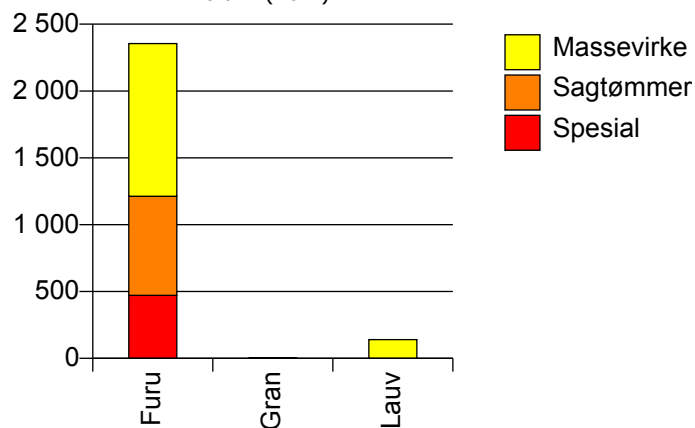


## 441 OS

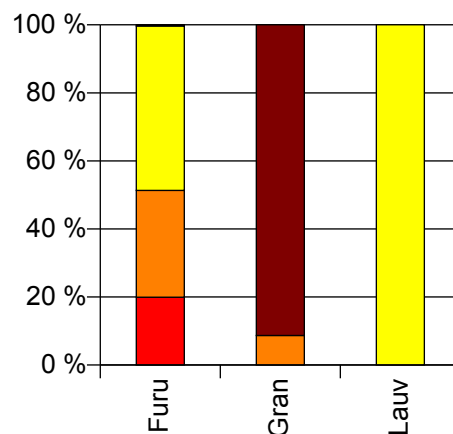
## Volum 2009 (kbm)

	Spesial	Sagtømmer	Massevirke	Vrak	Sum:
<b>Furu</b>	471	742	1 142	8	<b>2 363</b>
<b>Gran</b>		2		21	<b>23</b>
<b>Lauv</b>			140		<b>140</b>
<b>Sum:</b>	<b>471</b>	<b>744</b>	<b>1 282</b>	<b>29</b>	<b>2 526</b>

Volum (kbm)



Volum (prosentfordelt)



## Gjennomsnittspris 2009 (kr/kbm)

	Spesial	Sagtømmer	Massevirke	Vrak	Snitt
<b>Furu</b>	535	430	166	0	<b>322</b>
<b>Gran</b>		480		0	<b>42</b>
<b>Lauv</b>			341		<b>341</b>
<b>Snitt</b>	<b>535</b>	<b>430</b>	<b>185</b>	<b>0</b>	<b>320</b>

Gjennomsnittspris (kr/kbm)

