

Virkestatistikk fra

SKOG-DATA AS

Buskerud m/kommuner

Dataene i rapporten er hentet fra databasen som inneholder virkesdata med tilhørende innbetalinger av skogavgift. Rapporten er laget med Business Objects, som er sluttbrukerverktøyet i Skog-Data sine nye datavarehus-løsninger. Business Objects er ett meget sterkt rapportverktøy som kan presentere store mengder data effektivt.

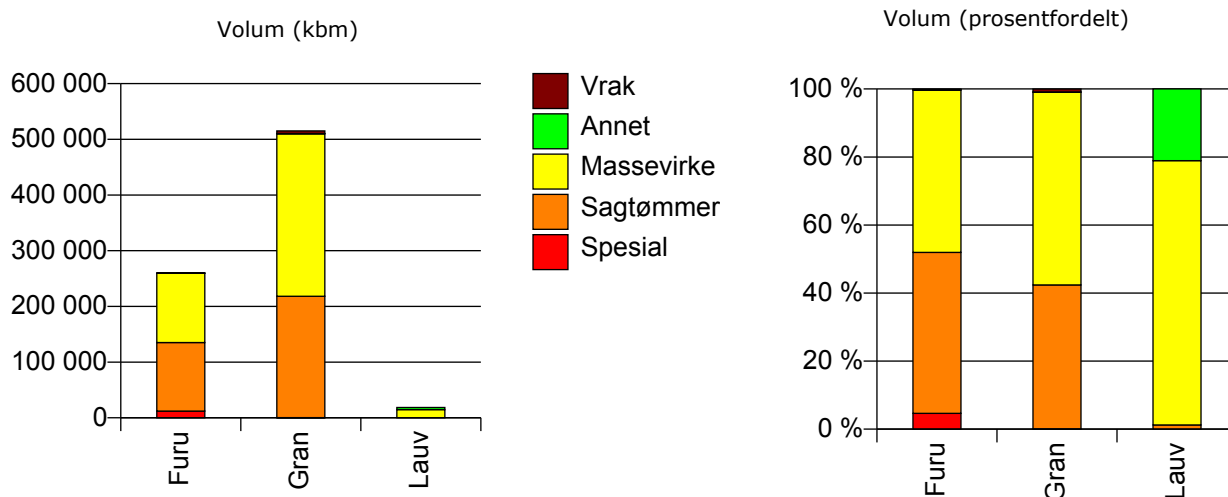
Rapportene kan lastes ned fra www.skogdata.no/statistikk

For mer informasjon, kontakt: tabh@skogdata.no

Buskerud

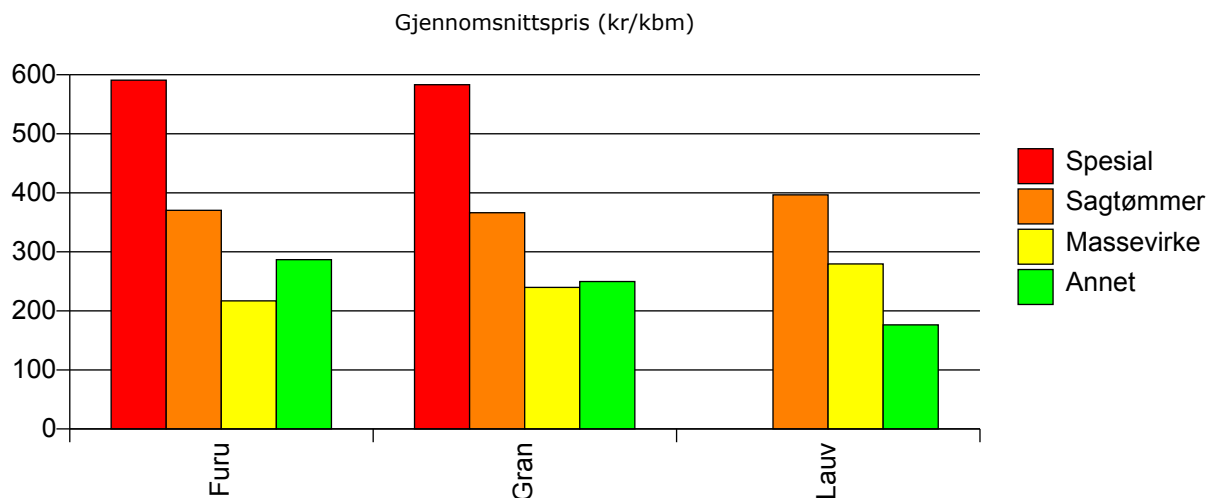
Volum 2009

	Spesial	Sagtømmer	Massevirke	Annet	Vrak	Sum:
Furu	12 133	123 082	124 166	187	588	260 156
Gran	460	217 798	291 796	365	4 626	515 045
Lauv		233	14 477	3 924		18 634
Sum:	12 593	341 113	430 439	4 476	5 214	793 835



Gjennomsnittspris 2009 (kr/kbm)

	Spesial	Sagtømmer	Massevirke	Annet	Vrak	Snitt:
Furu	591	370	217	287	0	307
Gran	583	366	240	250	0	291
Lauv		397	280	176		259
Snitt:	591	368	235	187	0	296

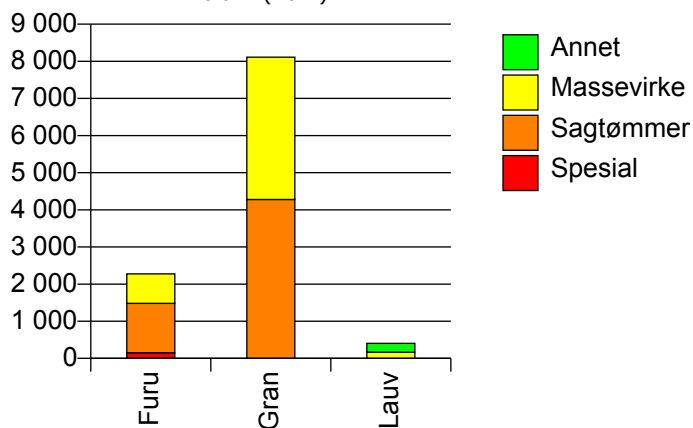


602 DRAMMEN

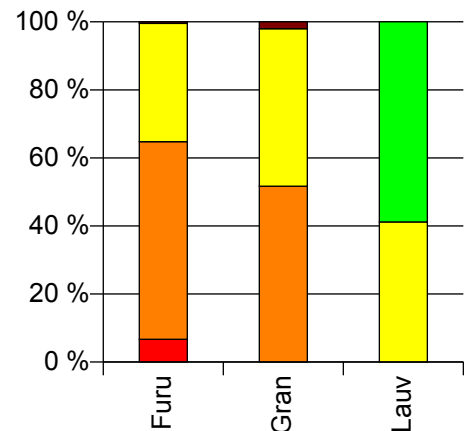
Volum 2009 (kbm)

	Spesial	Sagtømmer	Massevirke	Annet	Vrak	Sum:
Furu	153	1 328	795		10	2 286
Gran		4 279	3 833		166	8 278
Lauv			166	237		403
Sum:	153	5 607	4 794	237	176	10 967

Volum (kbm)



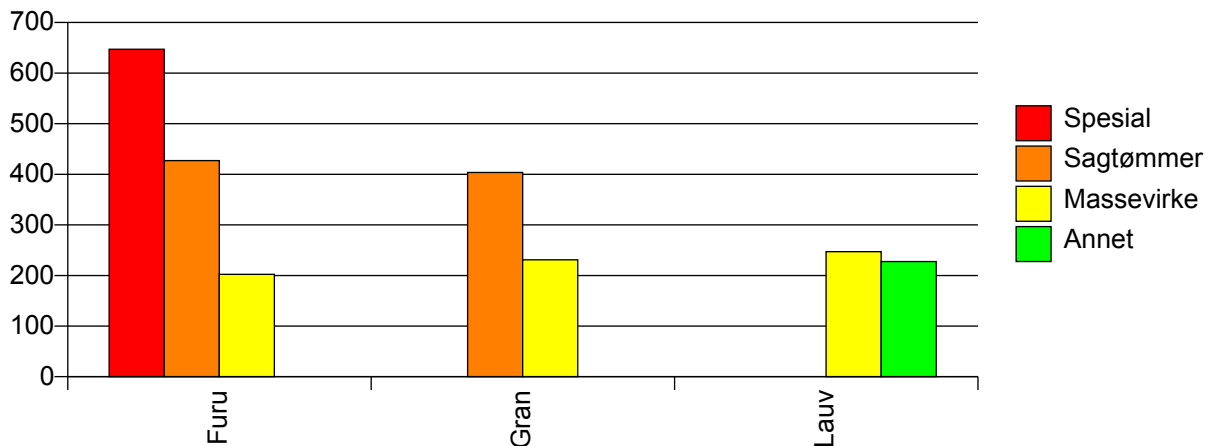
Volum (prosentfordelt)



Gjennomsnittspris 2009 (kr/kbm)

	Spesial	Sagtømmer	Massevirke	Annet	Vrak	Snitt
Furu	647	427	202		0	362
Gran		404	231		0	316
Lauv			247	228		236
Snitt	647	409	227	228	0	322

Gjennomsnittspris (kr/kbm)

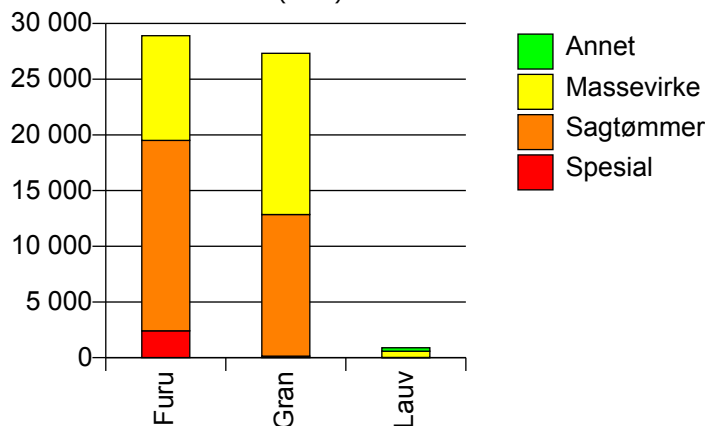


604 KONGSBERG

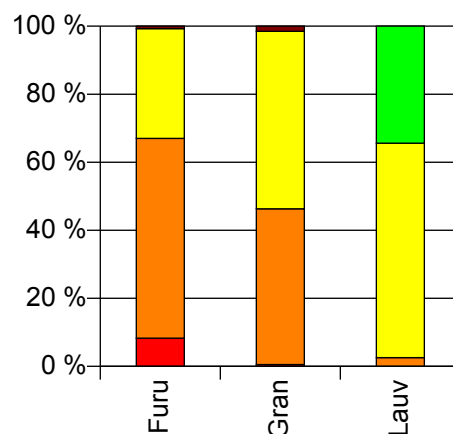
Volum 2009 (kbm)

	Spesial	Sagtømmer	Massevirke	Annet	Vrak	Sum:
Furu	2 412	17 098	9 395		211	29 116
Gran	143	12 706	14 473		414	27 736
Lauv		23	561	306		890
Sum:	2 555	29 827	24 429	306	625	57 742

Volum (kbm)



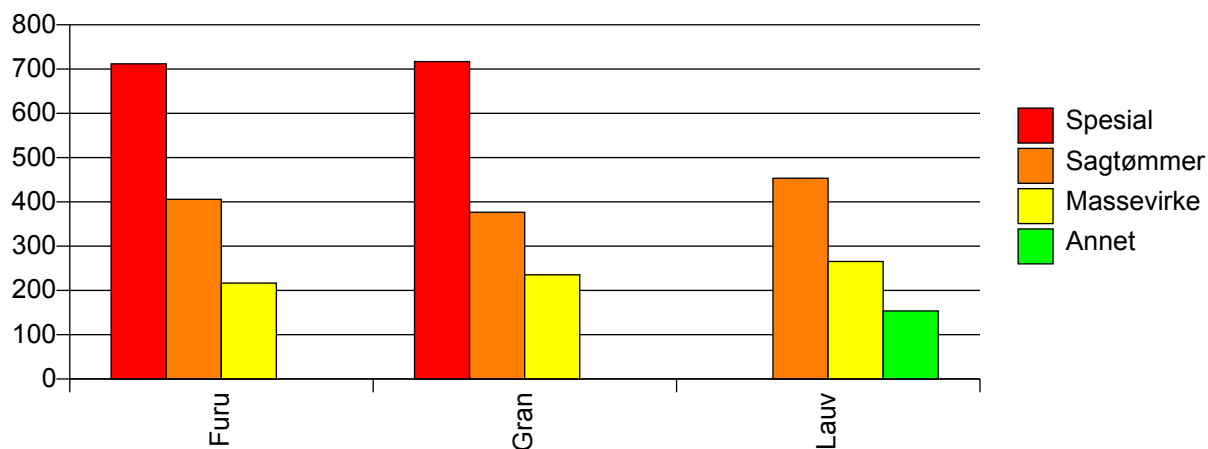
Volum (prosentfordelt)



Gjennomsnittspris 2009 (kr/kbm)

	Spesial	Sagtømmer	Massevirke	Annet	Vrak	Snitt
Furu	712	406	217		0	367
Gran	717	377	236		0	299
Lauv		453	265	154		232
Snitt	712	393	229	154	0	332

Gjennomsnittspris (kr/kbm)

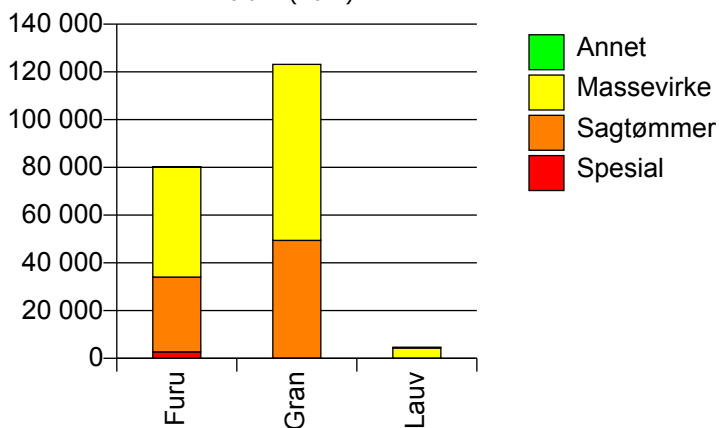


605 RINGERIKE

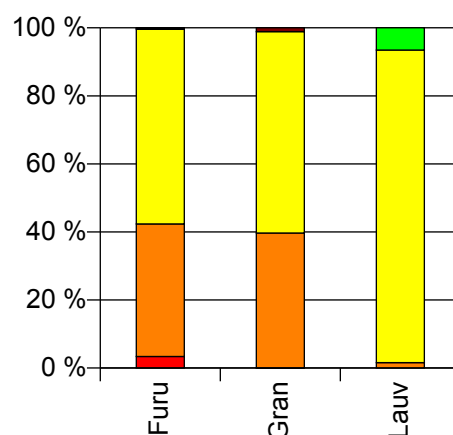
Volum 2009 (kbm)

	Spesial	Sagtømmer	Massevirke	Annet	Vrak	Sum:
Furu	2 720	31 351	46 070	187	132	80 460
Gran	86	49 332	73 730		1 406	124 554
Lauv		73	4 267	303		4 643
Sum:	2 806	80 756	124 067	490	1 538	209 657

Volum (kbm)



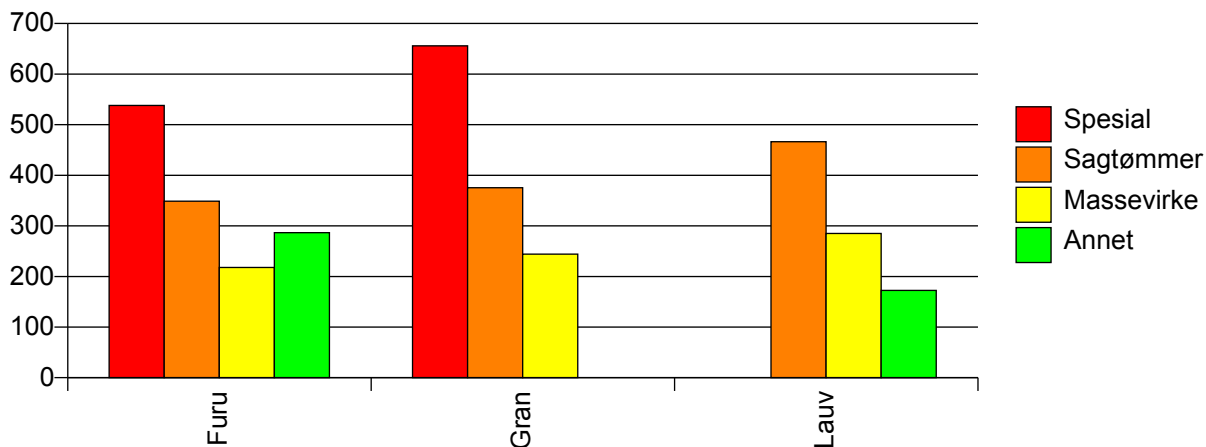
Volum (prosentfordelt)



Gjennomsnittspris 2009 (kr/kbm)

	Spesial	Sagtømmer	Massevirke	Annet	Vrak	Snitt
Furu	538	349	218	287	0	279
Gran	656	375	244		0	294
Lauv		466	285	173		280
Snitt	542	365	236	216	0	288

Gjennomsnittspris (kr/kbm)

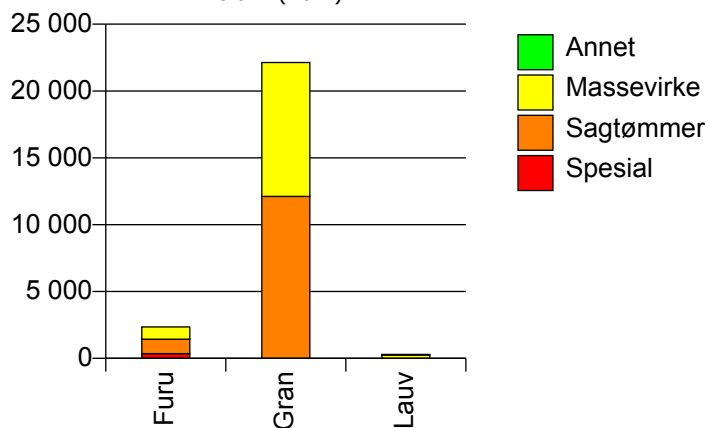


612 HOLE

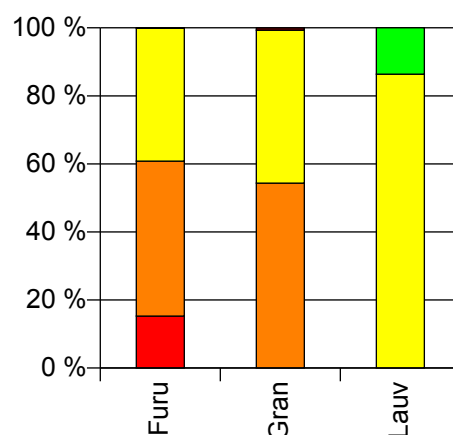
Volum 2009 (kbm)

	Spesial	Sagtømmer	Massevirke	Annet	Vrak	Sum:
Furu	359	1 070	918		3	2 350
Gran		12 119	10 017		157	22 293
Lauv			254	40		294
Sum:	359	13 189	11 189	40	160	24 937

Volum (kbm)



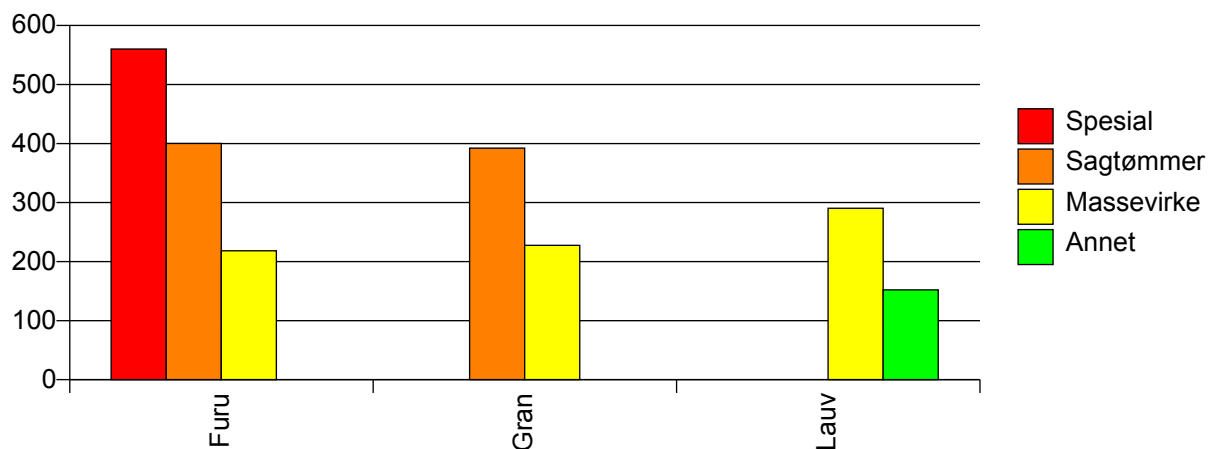
Volum (prosentfordelt)



Gjennomsnittspris 2009 (kr/kbm)

	Spesial	Sagtømmer	Massevirke	Annet	Vrak	Snitt
Furu	560	400	218		0	353
Gran		392	228		0	316
Lauv			290	152		272
Snitt	560	393	228	152	0	319

Gjennomsnittspris (kr/kbm)

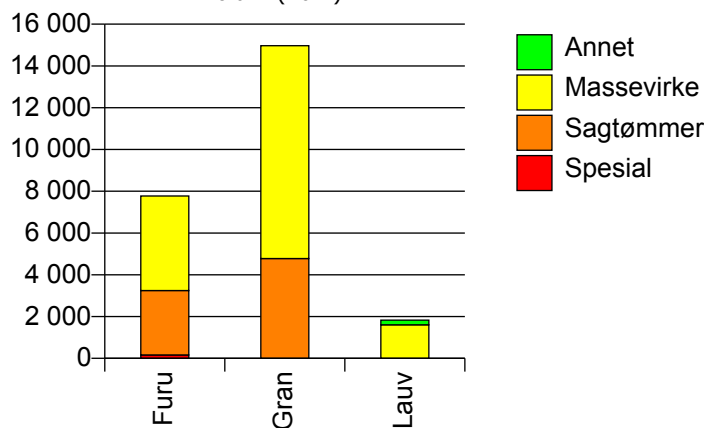


615 FLÅ

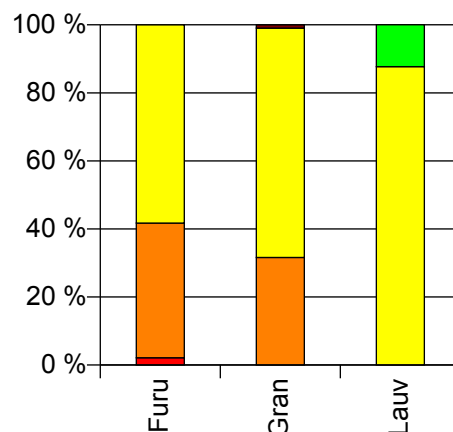
Volum 2009 (kbm)

	Spesial	Sagtømmer	Massevirke	Annet	Vrak	Sum:
Furu	166	3 078	4 527		2	7 773
Gran		4 779	10 187		145	15 111
Lauv			1 606	225		1 831
Sum:	166	7 857	16 320	225	147	24 715

Volum (kbm)



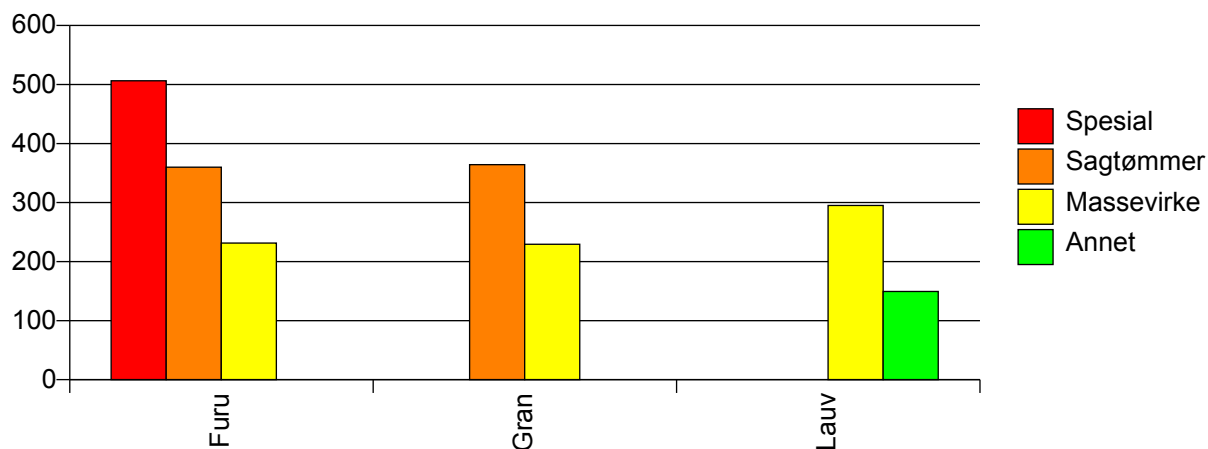
Volum (prosentfordelt)



Gjennomsnittspris 2009 (kr/kbm)

	Spesial	Sagtømmer	Massevirke	Annet	Vrak	Snitt
Furu	506	360	232		0	288
Gran		364	229		0	270
Lauv			295	149		277
Snitt	506	363	236	149	0	276

Gjennomsnittspris (kr/kbm)

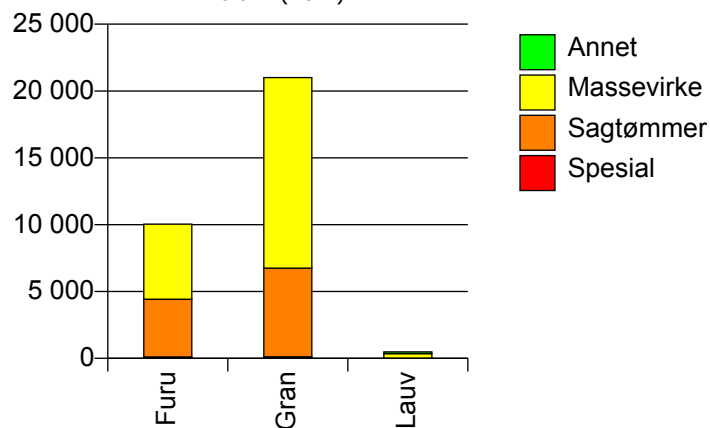


616 NES

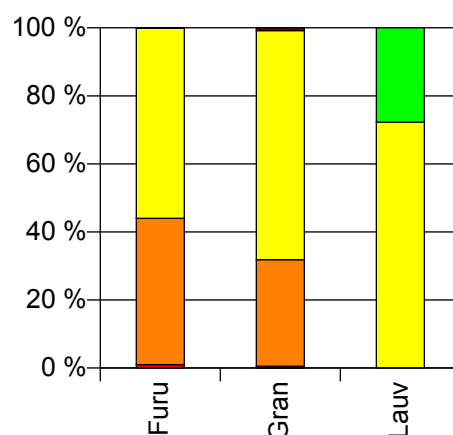
Volum 2009 (kbm)

	Spesial	Sagtømmer	Massevirke	Annet	Vrak	Sum:
Furu	100	4 322	5 617		8	10 047
Gran	110	6 638	14 257		171	21 176
Lauv			352	135		487
Sum:	210	10 960	20 226	135	179	31 710

Volum (kbm)



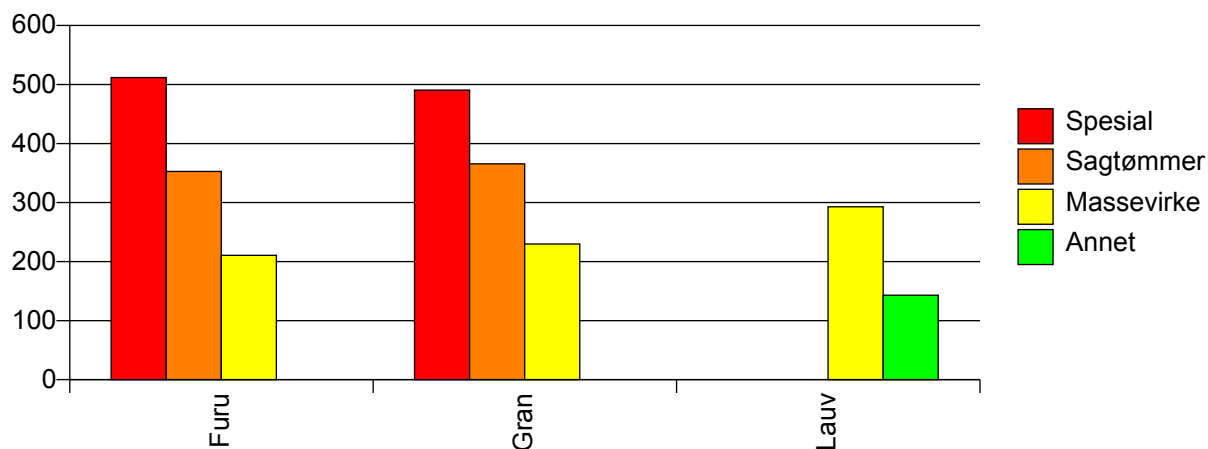
Volum (prosentfordelt)



Gjennomsnittspris 2009 (kr/kbm)

	Spesial	Sagtømmer	Massevirke	Annet	Vrak	Snitt
Furu	512	353	211		0	275
Gran	491	366	230		0	272
Lauv			293	143		251
Snitt	501	361	226	143	0	272

Gjennomsnittspris (kr/kbm)

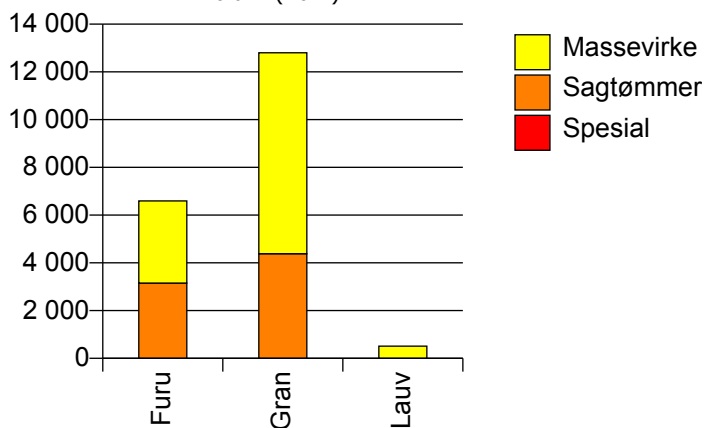


617 GOL

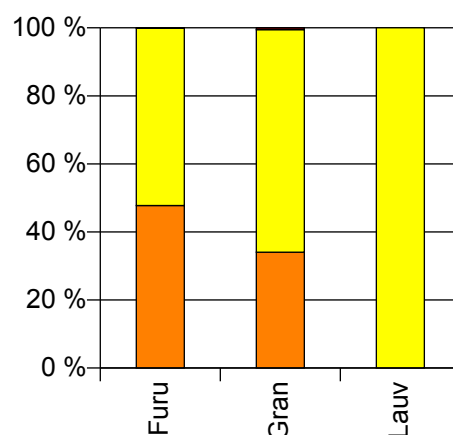
Volum 2009 (kbm)

	Spesial	Sagtømmer	Massevirke	Vrak	Sum:
Furu	0	3 156	3 440	9	6 605
Gran		4 380	8 419	70	12 869
Lauv			510		510
Sum:	0	7 536	12 369	79	19 984

Volum (kbm)



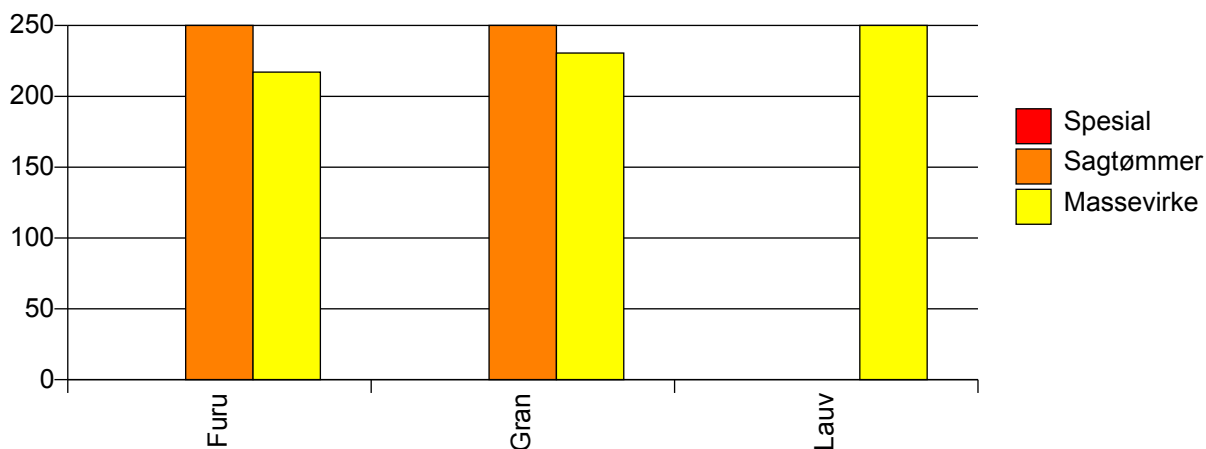
Volum (prosentfordelt)



Gjennomsnittspris 2009 (kr/kbm)

	Spesial	Sagtømmer	Massevirke	Vrak	Snitt
Furu	#DIV/0	351	217	0	281
Gran		344	231	0	268
Lauv			295		295
Snitt	#DIV/0	347	229	0	273

Gjennomsnittspris (kr/kbm)

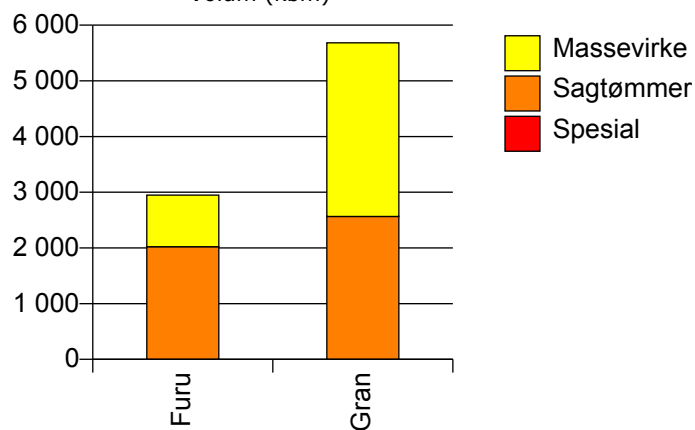


618 HEMSEDAL

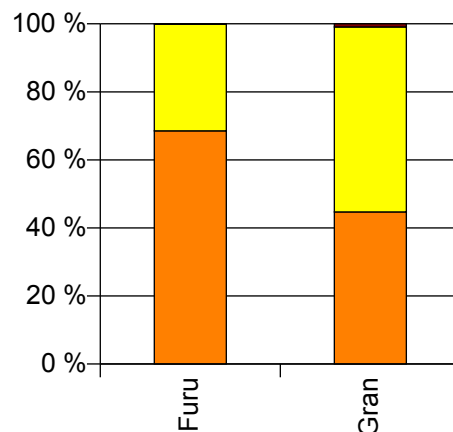
Volum 2009 (kbm)

	Spesial	Sagtømmer	Massevirke	Vrak	Sum:
Furu	0	2 021	927	1	2 949
Gran		2 565	3 118	52	5 735
Sum:	0	4 586	4 045	53	8 684

Volum (kbm)



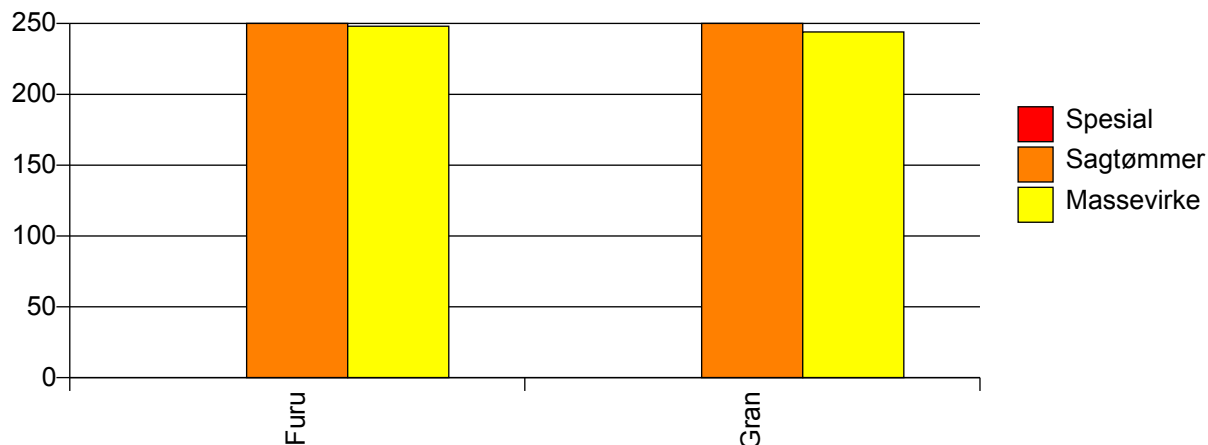
Volum (prosentfordelt)



Gjennomsnittspris 2009 (kr/kbm)

	Spesial	Sagtømmer	Massevirke	Vrak	Snitt
Furu	#DIV/0	370	248	0	332
Gran		344	244	0	287
Snitt	#DIV/0	356	245	0	302

Gjennomsnittspris (kr/kbm)

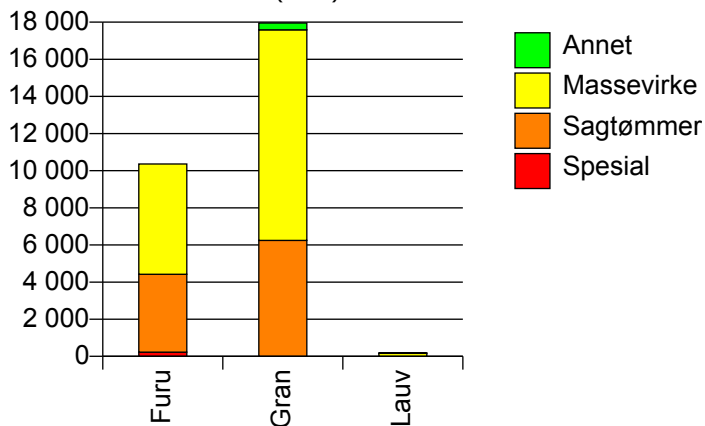


619 ÅL

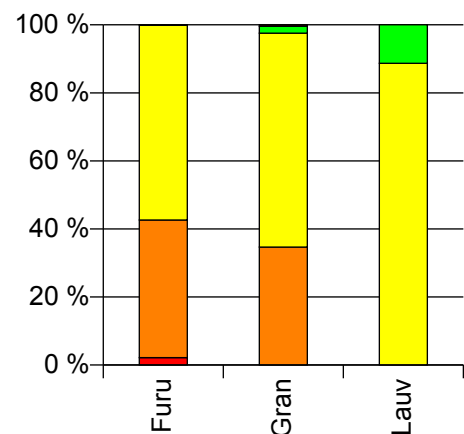
Volum 2009 (kbm)

	Spesial	Sagtømmer	Massevirke	Annet	Vrak	Sum:
Furu	224	4 197	5 939		6	10 366
Gran		6 249	11 339	365	74	18 027
Lauv			165	21		186
Sum:	224	10 446	17 443	386	80	28 579

Volum (kbm)



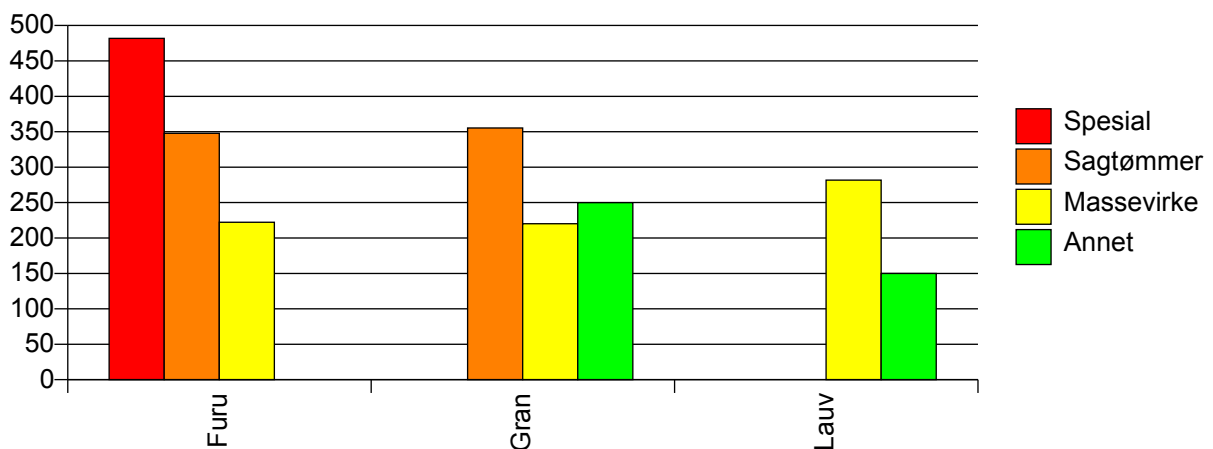
Volum (prosentfordelt)



Gjennomsnittspris 2009 (kr/kbm)

	Spesial	Sagtømmer	Massevirke	Annet	Vrak	Snitt
Furu	482	348	222		0	279
Gran		355	220	250	0	267
Lauv			282	150		267
Snitt	482	352	221	244	0	271

Gjennomsnittspris (kr/kbm)

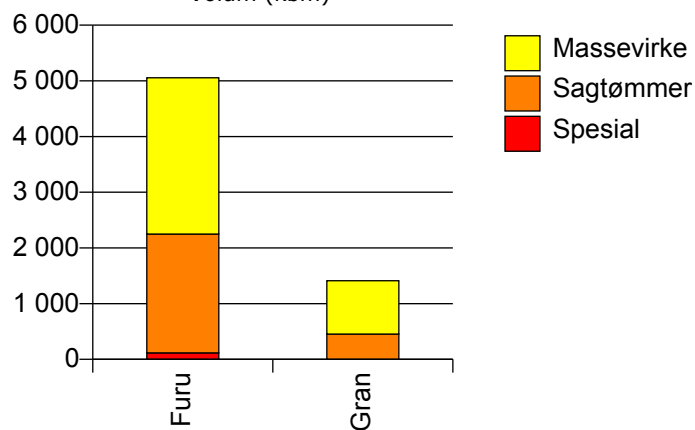


620 HOL

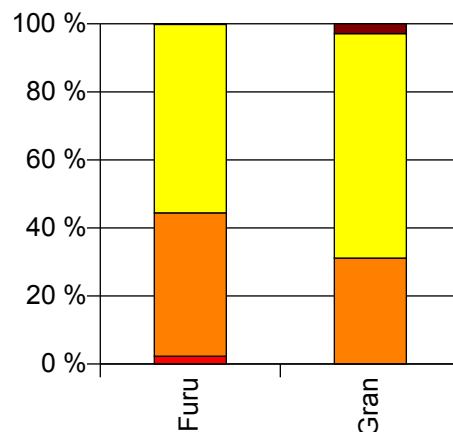
Volum 2009 (kbm)

	Spesial	Sagtømmer	Massevirke	Vrak	Sum:
Furu	117	2 133	2 806	8	5 064
Gran		453	959	42	1 454
Sum:	117	2 586	3 765	50	6 518

Volum (kbm)



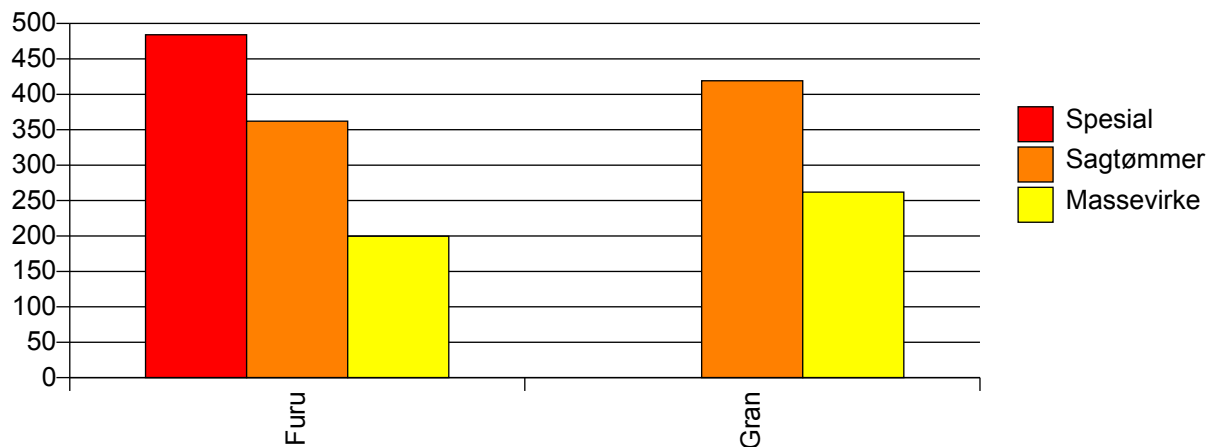
Volum (prosentfordelt)



Gjennomsnittspris 2009 (kr/kbm)

	Spesial	Sagtømmer	Massevirke	Vrak	Snitt
Furu	484	362	200	0	274
Gran		419	262	0	303
Snitt	484	372	215	0	281

Gjennomsnittspris (kr/kbm)

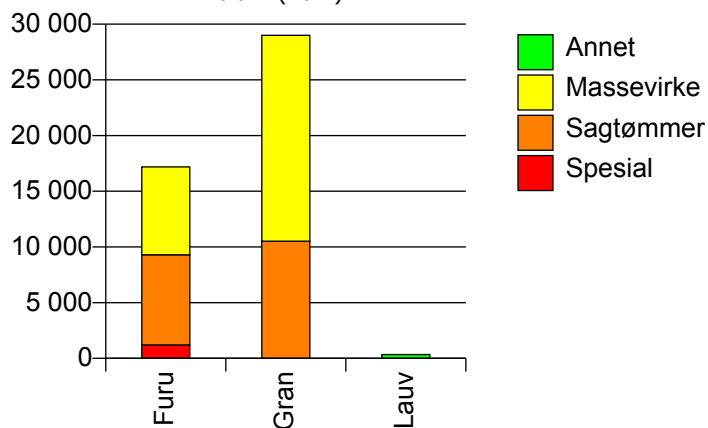


621 SIGDAL

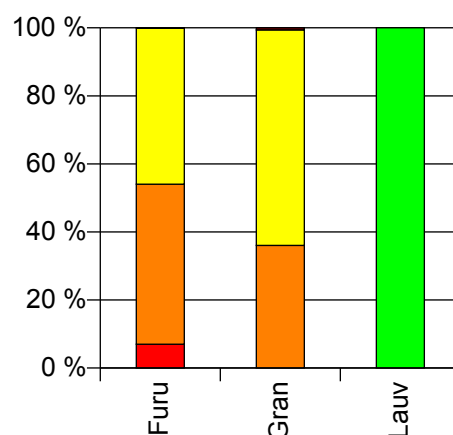
Volum 2009 (kbm)

	Spesial	Sagtømmer	Massevirke	Annet	Vrak	Sum:
Furu	1 202	8 089	7 888		10	17 189
Gran		10 519	18 486		173	29 178
Lauv				342		342
Sum:	1 202	18 608	26 374	342	183	46 709

Volum (kbm)



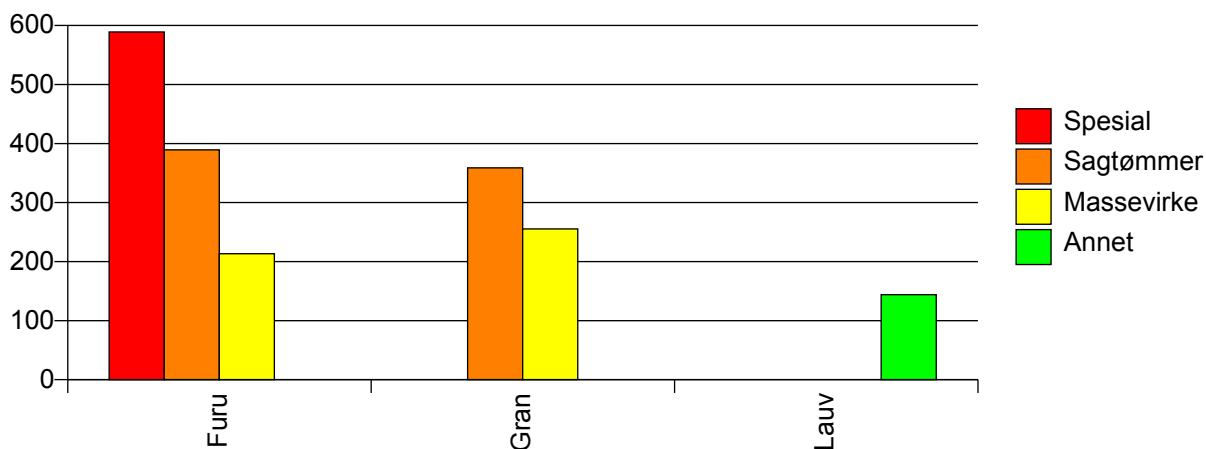
Volum (prosentfordelt)



Gjennomsnittspris 2009 (kr/kbm)

	Spesial	Sagtømmer	Massevirke	Annet	Vrak	Snitt
Furu	589	389	213		0	322
Gran		359	255		0	291
Lauv				144		144
Snitt	589	372	243	144	0	302

Gjennomsnittspris (kr/kbm)

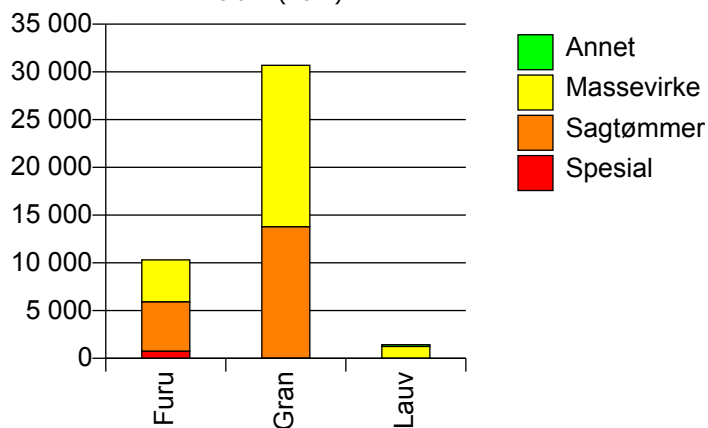


622 KRØDSHERAD

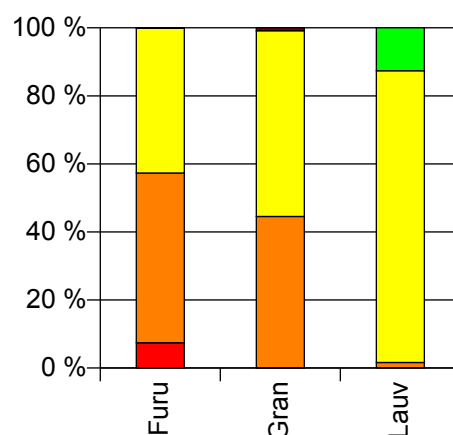
Volum 2009 (kbm)

	Spesial	Sagtømmer	Massevirke	Annet	Vrak	Sum:
Furu	767	5 155	4 397		12	10 331
Gran	31	13 763	16 895		264	30 953
Lauv		23	1 225	180		1 428
Sum:	798	18 941	22 517	180	276	42 712

Volum (kbm)



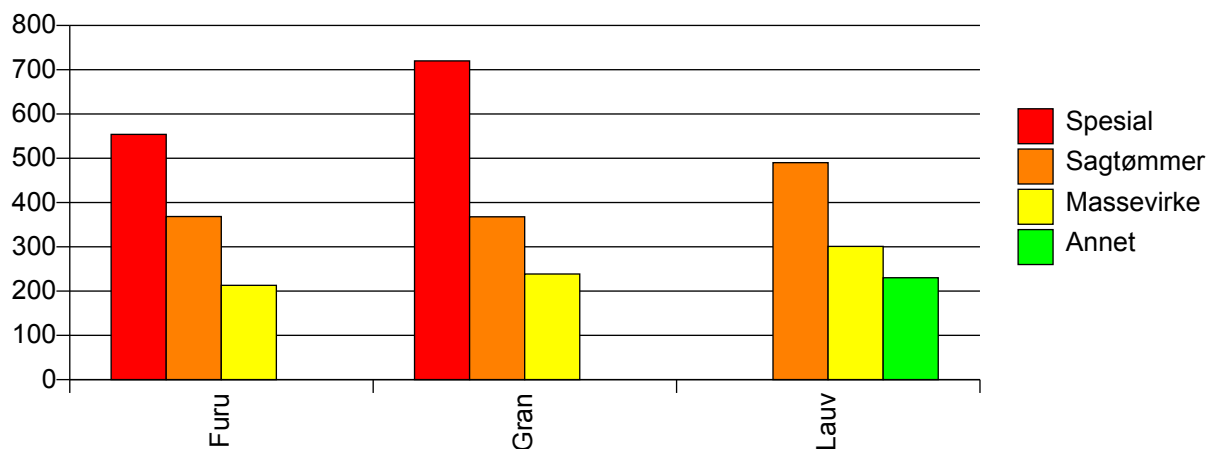
Volum (prosentfordelt)



Gjennomsnittspris 2009 (kr/kbm)

	Spesial	Sagtømmer	Massevirke	Annet	Vrak	Snitt
Furu	554	369	213		0	316
Gran	720	368	239		0	295
Lauv		490	301	230		295
Snitt	560	368	237	230	0	300

Gjennomsnittspris (kr/kbm)

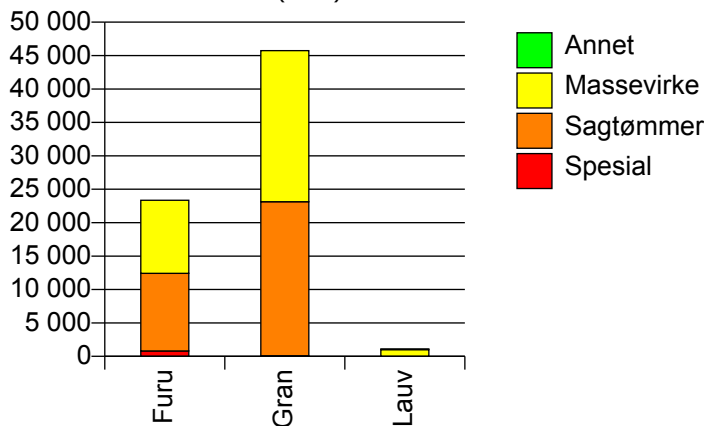


623 MODUM

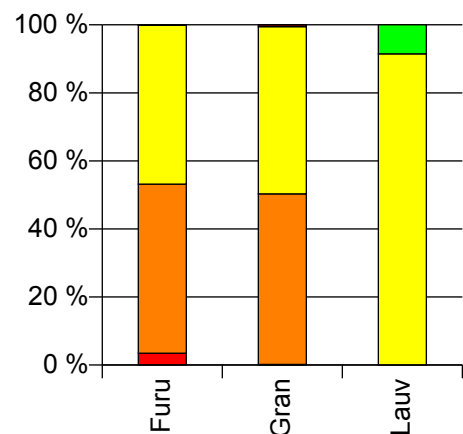
Volum 2009 (kbm)

	Spesial	Sagtømmer	Massevirke	Annet	Vrak	Sum:
Furu	814	11 614	10 916		29	23 373
Gran	90	23 043	22 611		238	45 982
Lauv			1 011	94		1 105
Sum:	904	34 657	34 538	94	267	70 460

Volum (kbm)



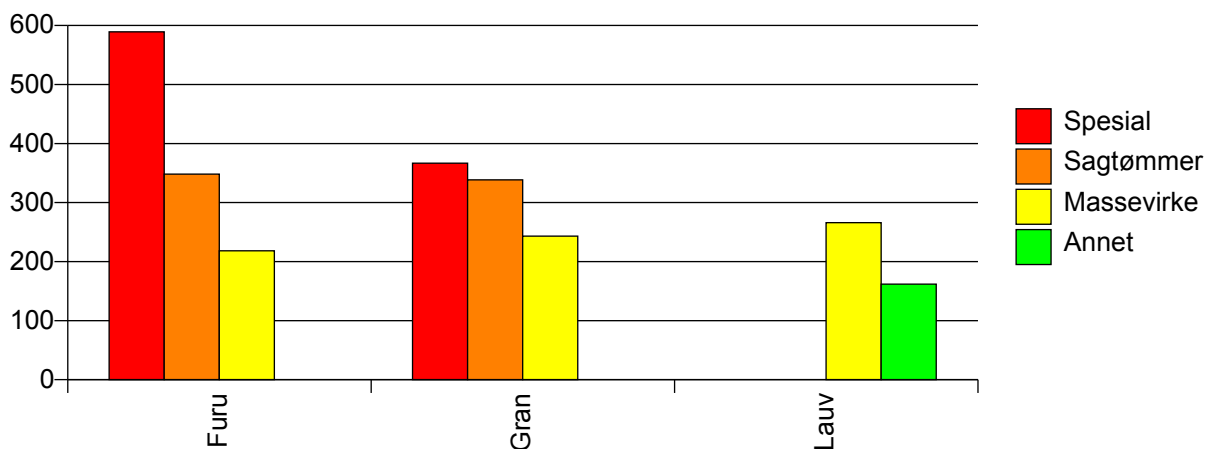
Volum (prosentfordelt)



Gjennomsnittspris 2009 (kr/kbm)

	Spesial	Sagtømmer	Massevirke	Annet	Vrak	Snitt
Furu	589	348	218		0	296
Gran	367	338	243		0	290
Lauv			266	162		257
Snitt	567	342	236	162	0	291

Gjennomsnittspris (kr/kbm)

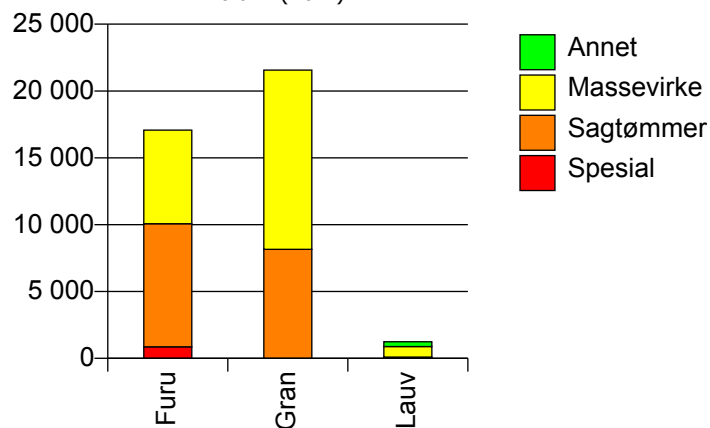


624 ØVRE EIKER

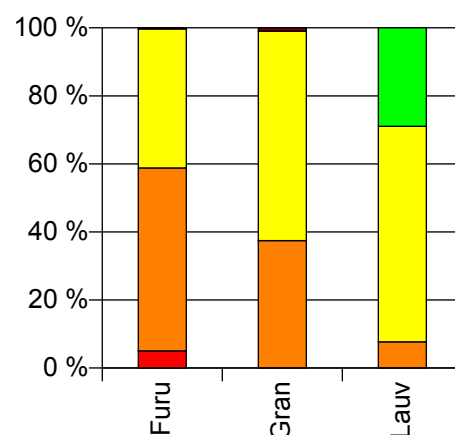
Volum 2009 (kbm)

	Spesial	Sagtømmer	Massevirke	Annet	Vrak	Sum:
Furu	863	9 211	7 000		56	17 130
Gran		8 155	13 407		211	21 773
Lauv		96	790	361		1 247
Sum:	863	17 462	21 197	361	267	40 150

Volum (kbm)



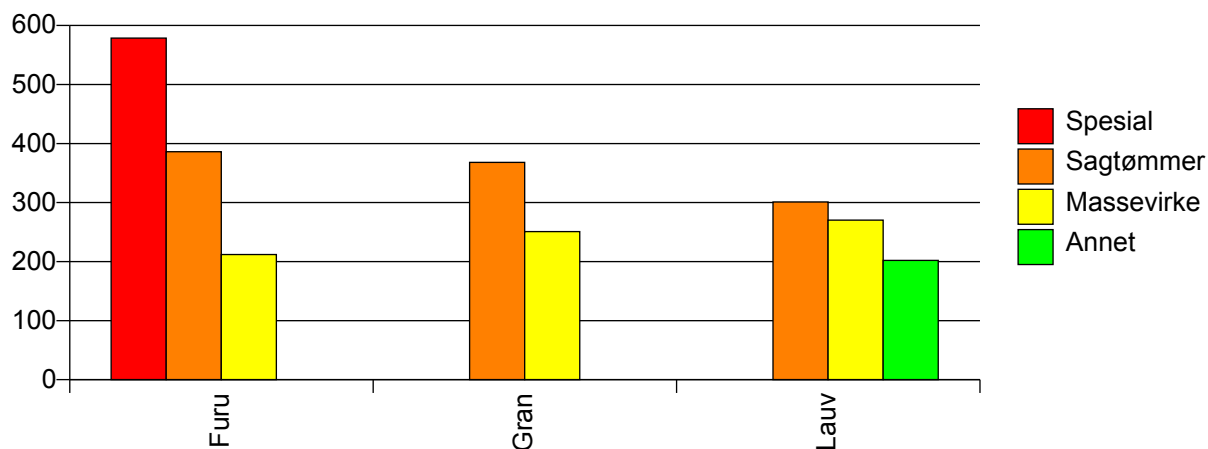
Volum (prosentfordelt)



Gjennomsnittspris 2009 (kr/kbm)

	Spesial	Sagtømmer	Massevirke	Annet	Vrak	Snitt
Furu	579	386	212		0	323
Gran		368	251		0	292
Lauv		301	270	202		253
Snitt	579	377	239	202	0	304

Gjennomsnittspris (kr/kbm)

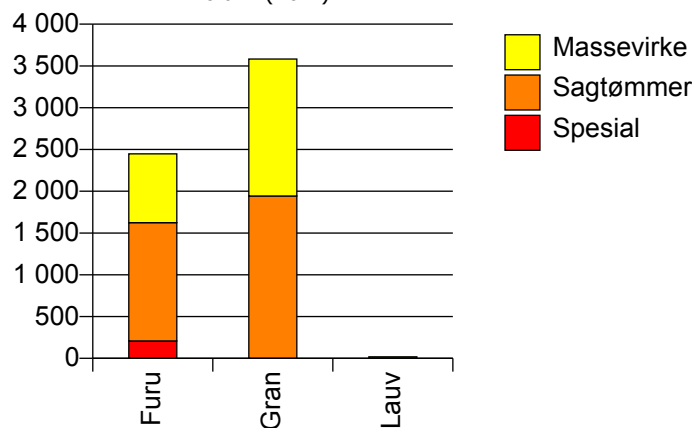


625 NEDRE EIKER

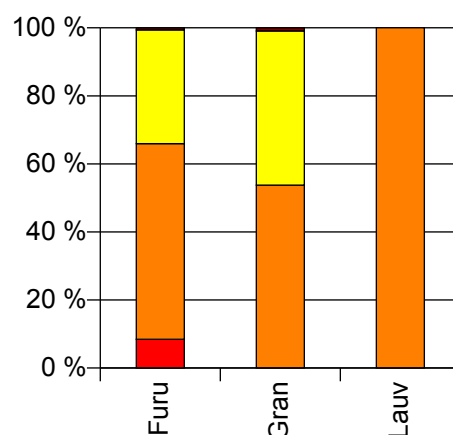
Volum 2009 (kbm)

	Spesial	Sagtømmer	Massevirke	Vrak	Sum:
Furu	208	1 416	823	15	2 462
Gran		1 944	1 639	33	3 616
Lauv		18			18
Sum:	208	3 378	2 462	48	6 096

Volum (kbm)



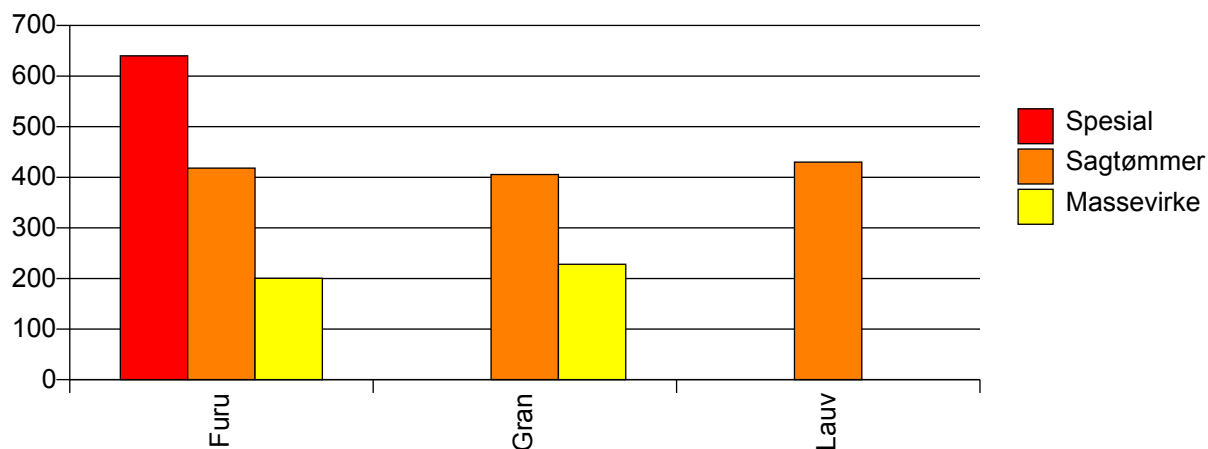
Volum (prosentfordelt)



Gjennomsnittspris 2009 (kr/kbm)

	Spesial	Sagtømmer	Massevirke	Vrak	Snitt
Furu	640	418	201	0	362
Gran		406	228	0	321
Lauv		430			430
Snitt	640	411	219	0	338

Gjennomsnittspris (kr/kbm)

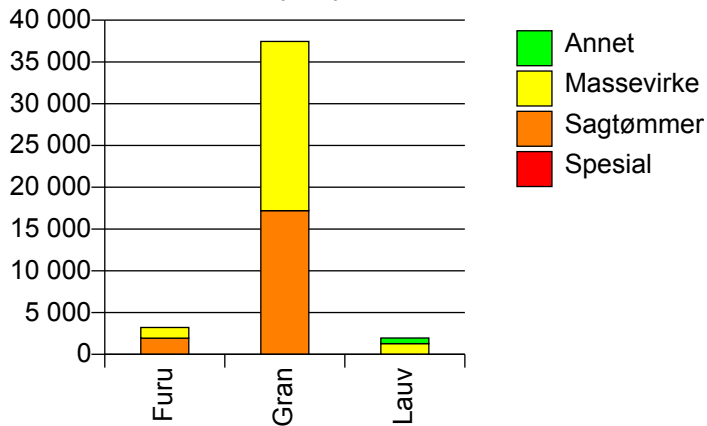


626 LIER

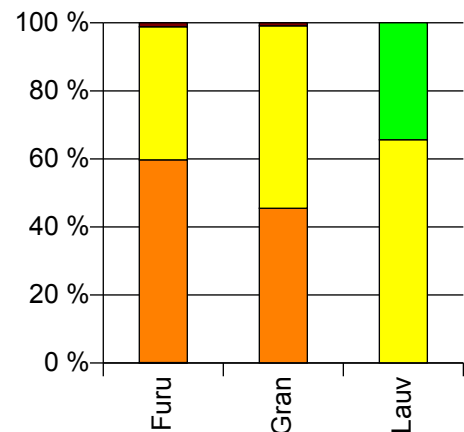
Volum 2009 (kbm)

	Spesial	Sagtømmer	Massevirke	Annet	Vrak	Sum:
Furu	5	1 940	1 273		38	3 256
Gran		17 194	20 254		337	37 785
Lauv			1 284	672		1 956
Sum:	5	19 134	22 811	672	375	42 997

Volum (kbm)



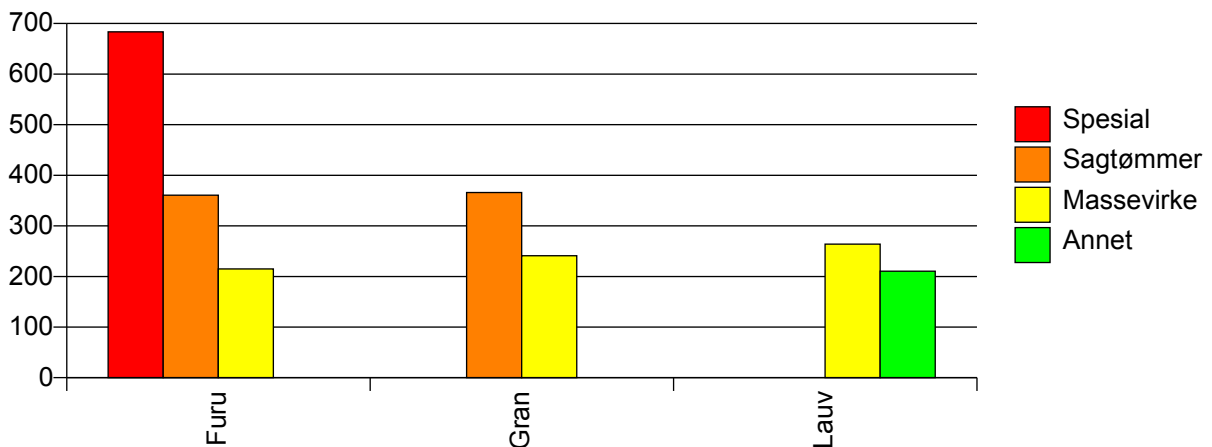
Volum (prosentfordelt)



Gjennomsnittspris 2009 (kr/kbm)

	Spesial	Sagtømmer	Massevirke	Annet	Vrak	Snitt
Furu	683	361	215		0	300
Gran		366	241		0	296
Lauv			264	210		246
Snitt	683	365	241	210	0	294

Gjennomsnittspris (kr/kbm)

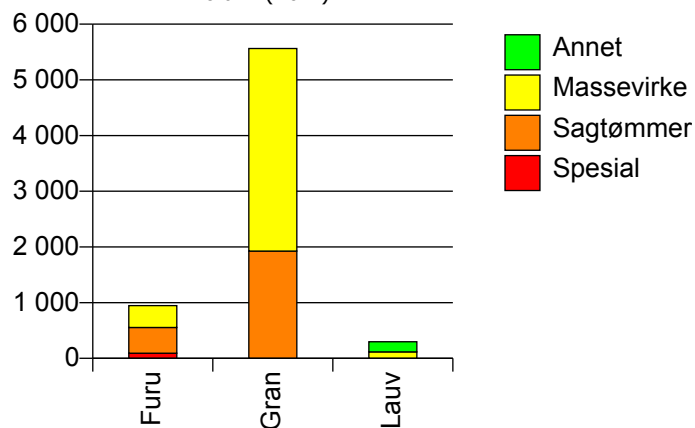


627 RØYKEN

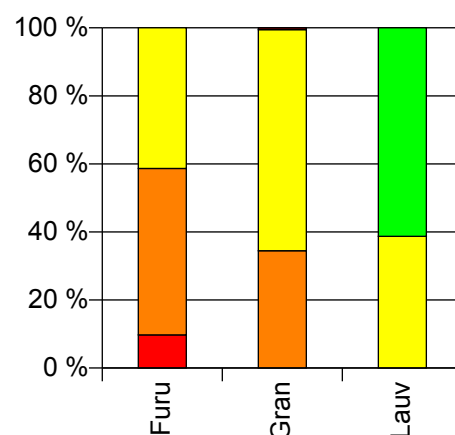
Volum 2009 (kbm)

	Spesial	Sagtømmer	Massevirke	Annet	Vrak	Sum:
Furu	92	463	391			946
Gran		1 927	3 635		29	5 591
Lauv			115	182		297
Sum:	92	2 390	4 141	182	29	6 834

Volum (kbm)



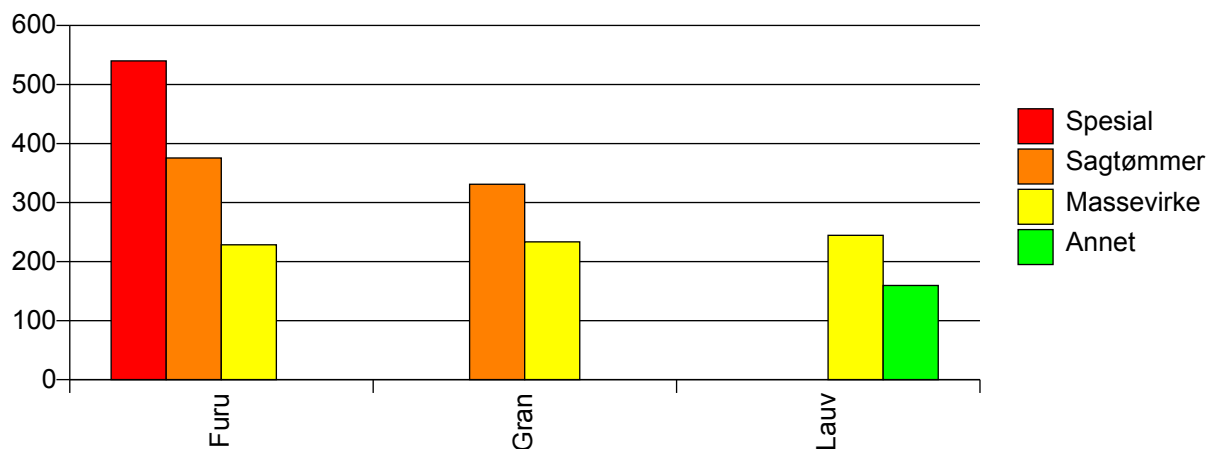
Volum (prosentfordelt)



Gjennomsnittspris 2009 (kr/kbm)

	Spesial	Sagtømmer	Massevirke	Annet	Vrak	Snitt
Furu	540	376	229			331
Gran		331	233		0	266
Lauv			245	160		193
Snitt	540	340	233	160	0	272

Gjennomsnittspris (kr/kbm)

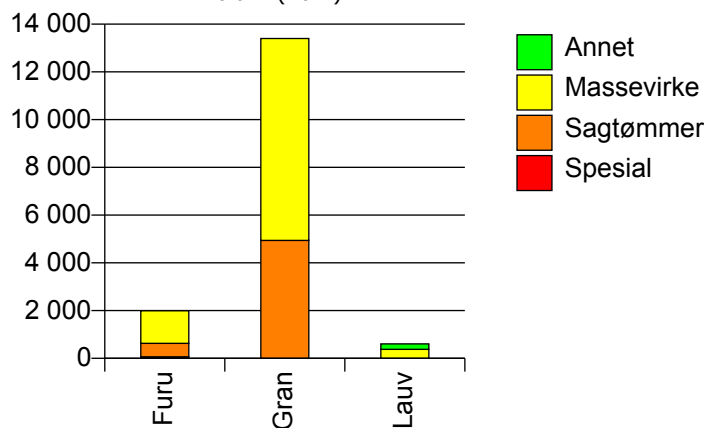


628 HURUM

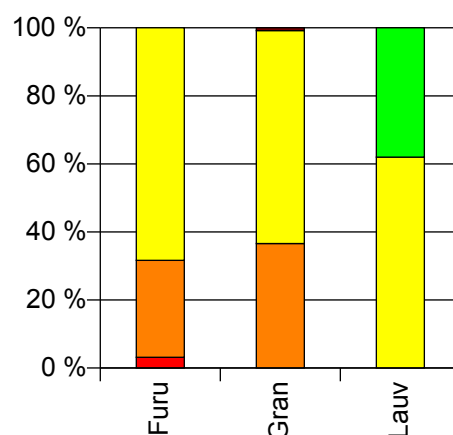
Volum 2009 (kbm)

	Spesial	Sagtømmer	Massevirke	Annet	Vrak	Sum:
Furu	63	567	1 360		0	1 990
Gran		4 940	8 457		108	13 505
Lauv			377	231		608
Sum:	63	5 507	10 194	231	108	16 103

Volum (kbm)



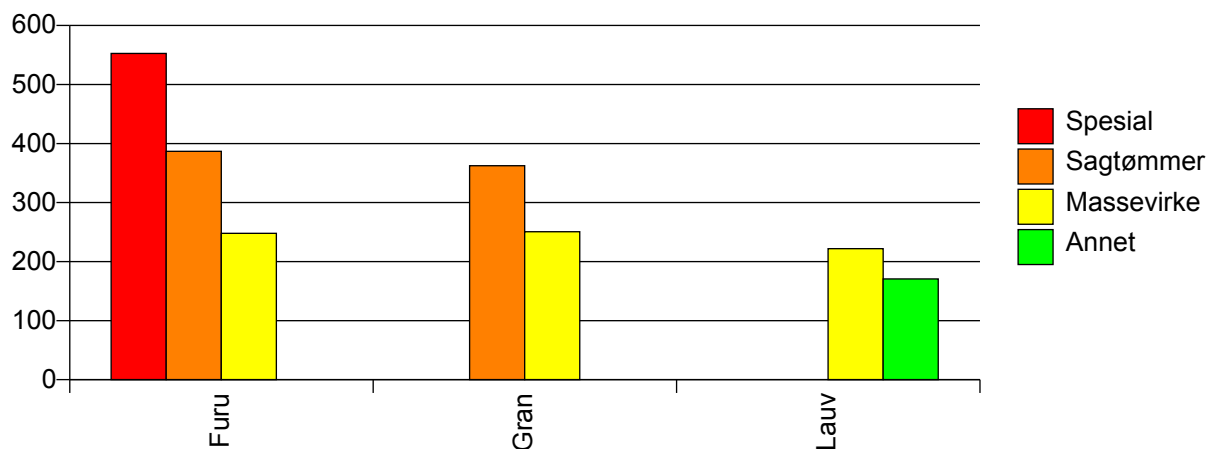
Volum (prosentfordelt)



Gjennomsnittspris 2009 (kr/kbm)

	Spesial	Sagtømmer	Massevirke	Annet	Vrak	Snitt
Furu	553	387	248		#DIV/0	297
Gran		362	251		0	290
Lauv			222	171		203
Snitt	553	365	249	171	0	287

Gjennomsnittspris (kr/kbm)

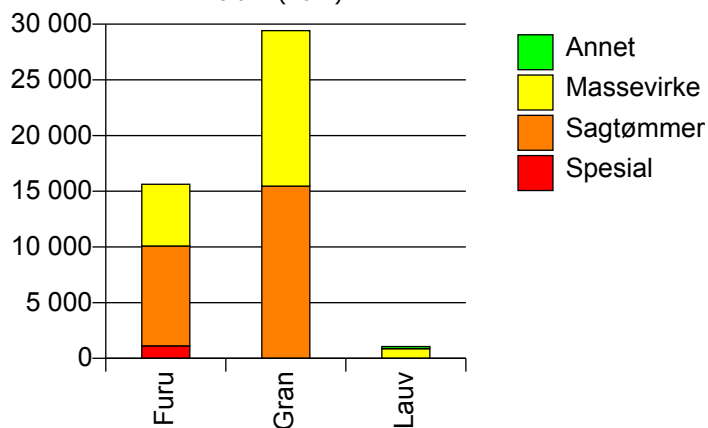


631 FLESBERG

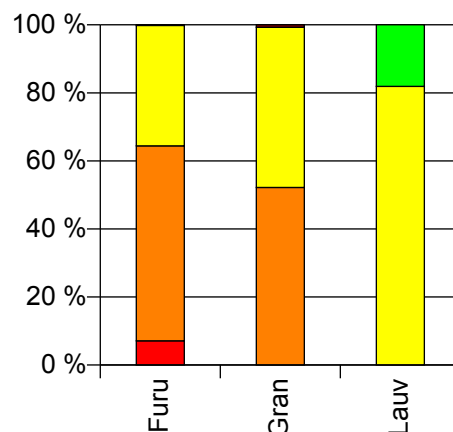
Volum 2009 (kbm)

	Spesial	Sagtømmer	Massevirke	Annet	Vrak	Sum:
Furu	1 115	8 969	5 541		25	15 650
Gran		15 462	13 955		216	29 633
Lauv			864	191		1 055
Sum:	1 115	24 431	20 360	191	241	46 338

Volum (kbm)



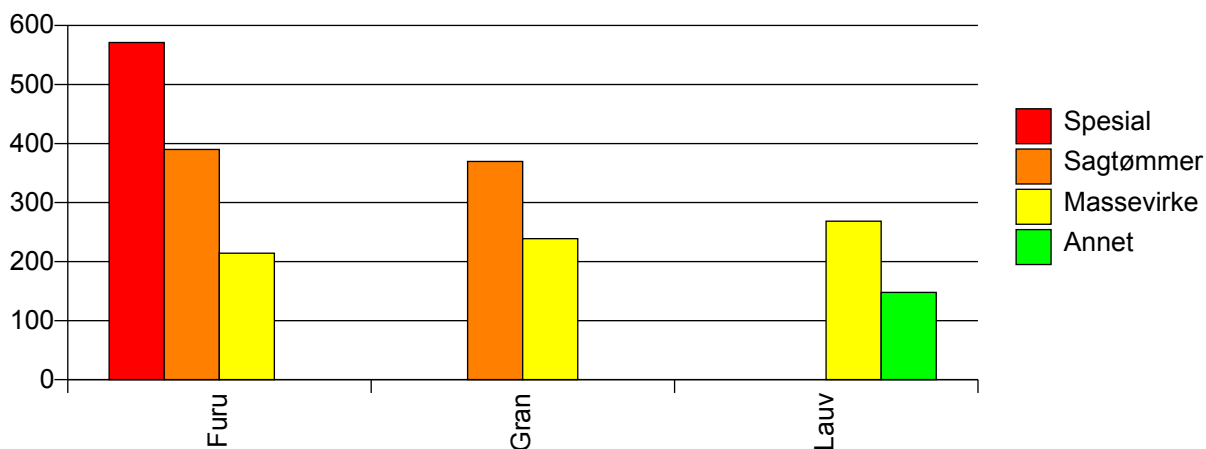
Volum (prosentfordelt)



Gjennomsnittspris 2009 (kr/kbm)

	Spesial	Sagtømmer	Massevirke	Annet	Vrak	Snitt
Furu	571	390	214		0	340
Gran		370	239		0	305
Lauv			269	148		247
Snitt	571	377	233	148	0	316

Gjennomsnittspris (kr/kbm)

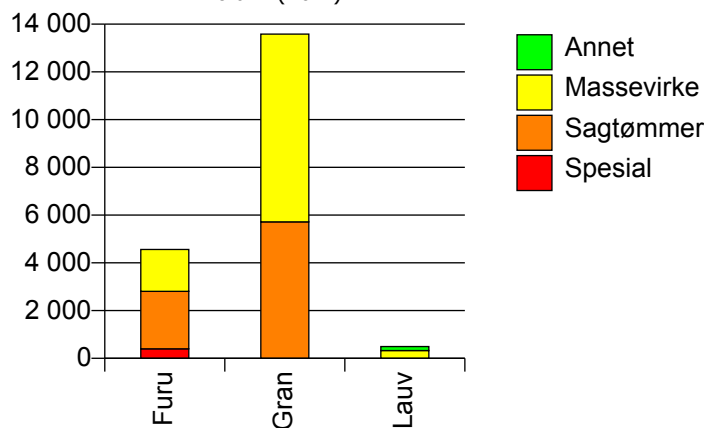


632 ROLLAG

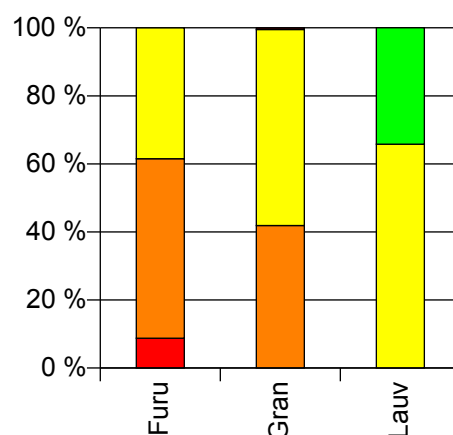
Volum 2009 (kbm)

	Spesial	Sagtømmer	Massevirke	Annet	Vrak	Sum:
Furu	400	2 406	1 754		1	4 561
Gran		5 717	7 869		66	13 652
Lauv			325	169		494
Sum:	400	8 123	9 948	169	67	18 707

Volum (kbm)



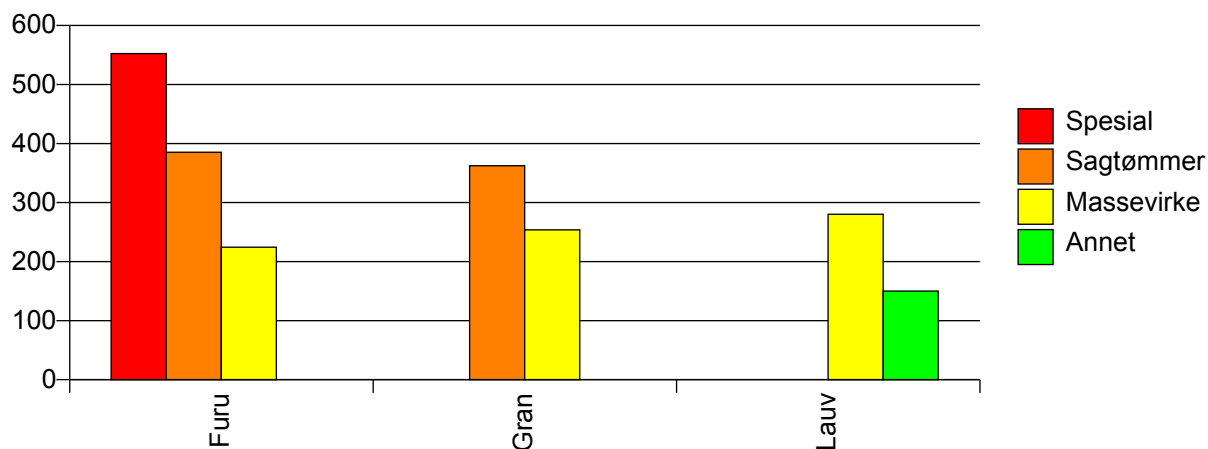
Volum (prosentfordelt)



Gjennomsnittspris 2009 (kr/kbm)

	Spesial	Sagtømmer	Massevirke	Annet	Vrak	Snitt
Furu	552	385	224		0	338
Gran		362	254		0	298
Lauv			280	150		236
Snitt	552	369	249	150	0	306

Gjennomsnittspris (kr/kbm)

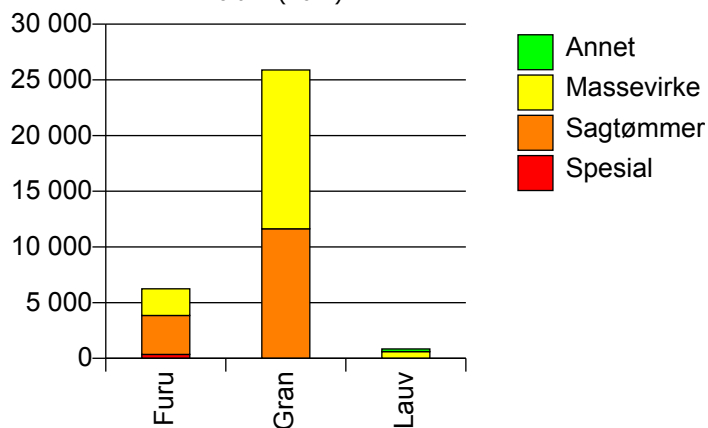


633 NORE OG UVDAL

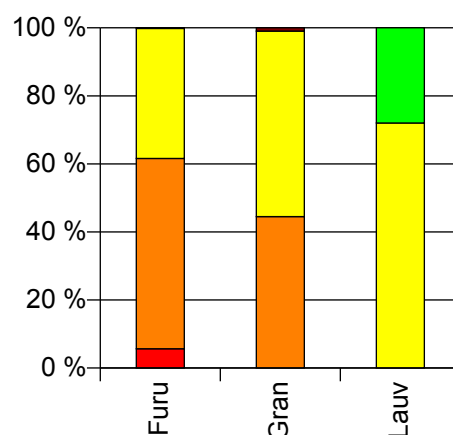
Volum 2009 (kbm)

	Spesial	Sagtømmer	Massevirke	Annet	Vrak	Sum:
Furu	353	3 498	2 389		12	6 252
Gran		11 634	14 256		254	26 144
Lauv			605	235		840
Sum:	353	15 132	17 250	235	266	33 236

Volum (kbm)



Volum (prosentfordelt)



Gjennomsnittspris 2009 (kr/kbm)

	Spesial	Sagtømmer	Massevirke	Annet	Vrak	Snitt
Furu	560	353	210		0	309
Gran		351	222		0	277
Lauv			277	146		240
Snitt	560	351	223	146	0	282

Gjennomsnittspris (kr/kbm)

