

Virkestatistikk fra

SKOG-DATA AS

Aust-Agder m/kommuner

Dataene i rapporten er hentet fra databasen som inneholder virkesdata med tilhørende innbetalinger av skogavgift. Rapporten er laget med Business Objects, som er sluttbrukerverktøyet i Skog-Data sine nye datavarehus-løsninger. Business Objects er ett meget sterkt rapportverktøy som kan presentere store mengder data effektivt.

Rapportene kan lastes ned fra www.skogdata.no/statistikk

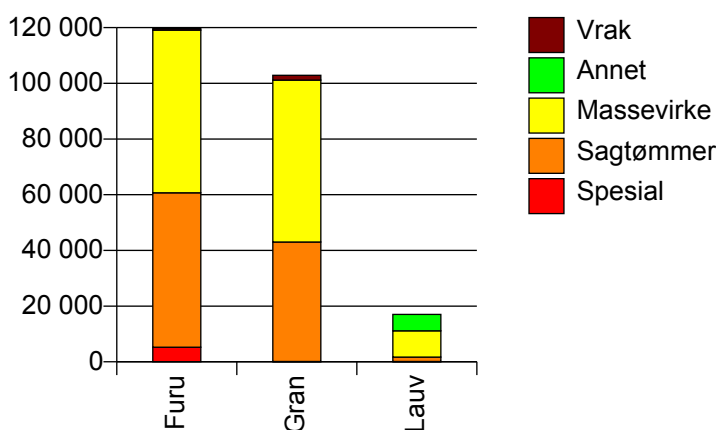
For mer informasjon, kontakt: tabh@skogdata.no

Aust-Agder

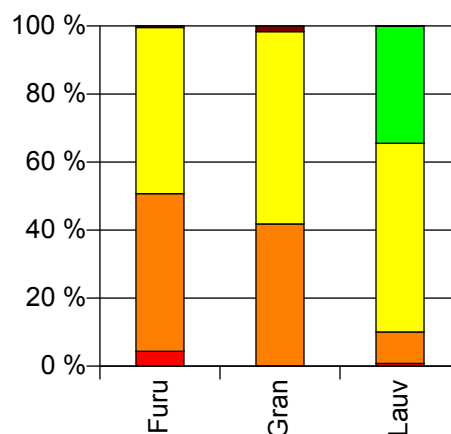
Volum 2009

	Spesial	Sagtømmer	Massevirke	Annet	Vrak	Sum:
Furu	5 239	55 438	58 453		525	119 655
Gran	120	42 894	58 149		1 719	102 882
Lauv	135	1 575	9 446	5 861	6	17 023
Sum:	5 494	99 907	126 048	5 861	2 250	239 560

Volum (kbm)



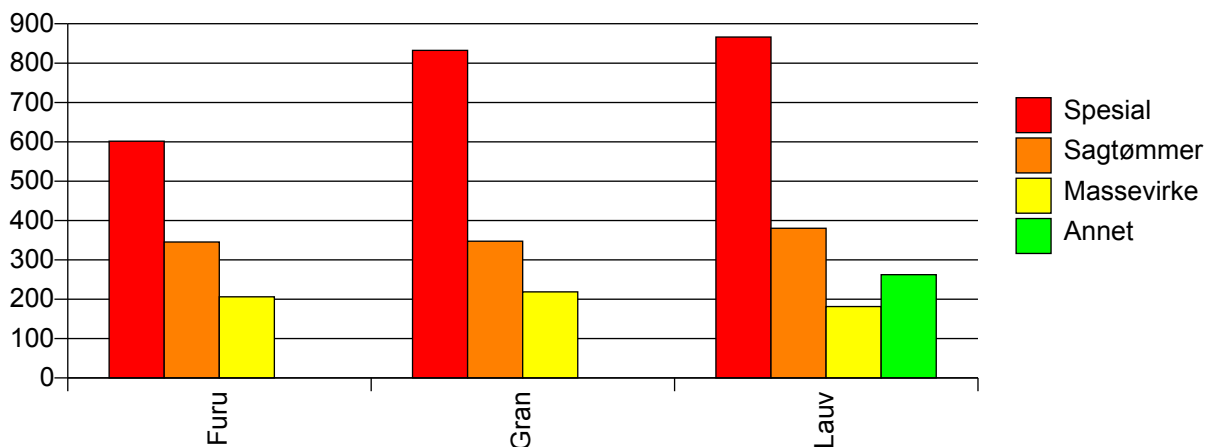
Volum (prosentfordelt)



Gjennomsnittspris 2009 (kr/kbm)

	Spesial	Sagtømmer	Massevirke	Annet	Vrak	Snitt:
Furu	601	346	206		0	287
Gran	833	348	219		0	270
Lauv	866	380	182	263	0	233
Snitt:	613	347	210	263	0	276

Gjennomsnittspris (kr/kbm)

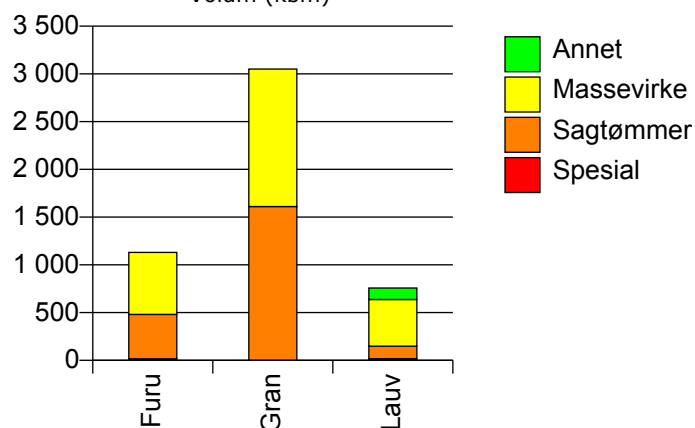


901 RISØR

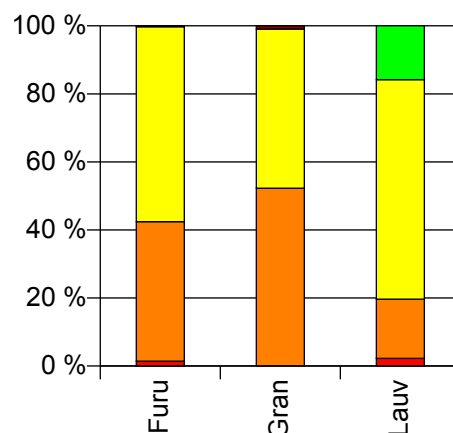
Volum 2009 (kbm)

	Spesial	Sagtømmer	Massevirke	Annet	Vrak	Sum:
Furu	16	465	649		3	1 133
Gran		1 611	1 440		30	3 081
Lauv	17	132	489	120		758
Sum:	33	2 208	2 578	120	33	4 972

Volum (kbm)



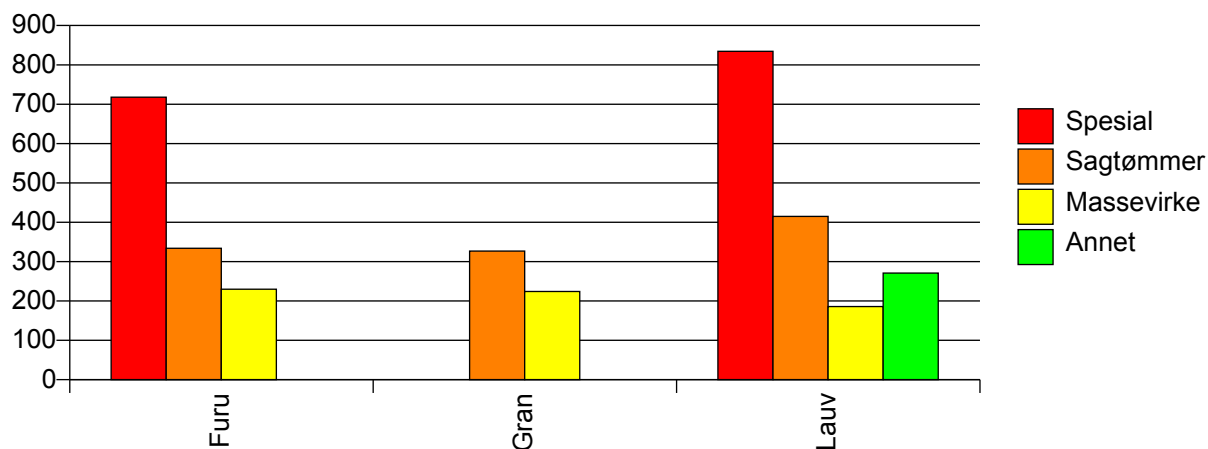
Volum (prosentfordelt)



Gjennomsnittspris 2009 (kr/kbm)

	Spesial	Sagtømmer	Massevirke	Annet	Vrak	Snitt
Furu	718	334	230		0	279
Gran		327	224		0	276
Lauv	835	415	186	271		254
Snitt	778	334	218	271	0	273

Gjennomsnittspris (kr/kbm)

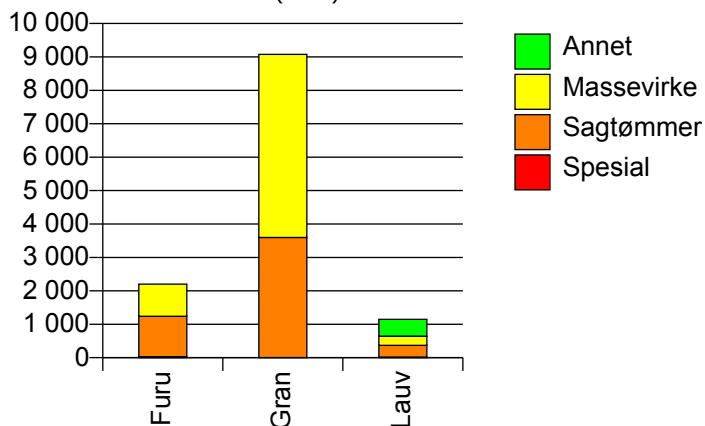


904 GRIMSTAD

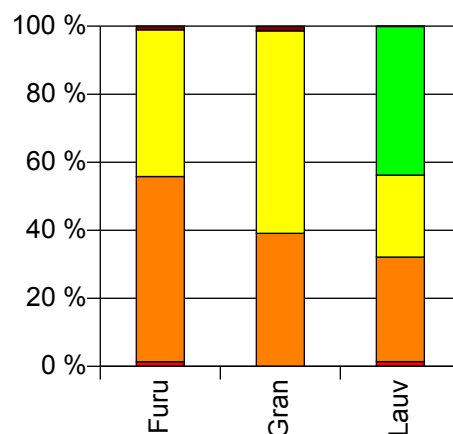
Volum 2009 (kbm)

	Spesial	Sagtømmer	Massevirke	Annet	Vrak	Sum:
Furu	30	1 211	959		24	2 224
Gran		3 598	5 477		127	9 202
Lauv	16	353	277	502	1	1 149
Sum:	46	5 162	6 713	502	152	12 575

Volum (kbm)



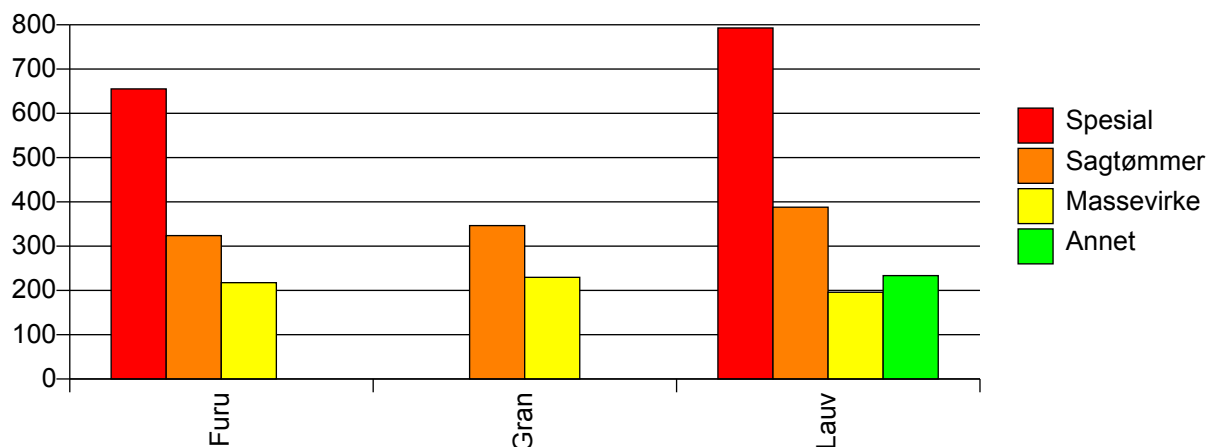
Volum (prosentfordelt)



Gjennomsnittspris 2009 (kr/kbm)

	Spesial	Sagtømmer	Massevirke	Annet	Vrak	Snitt
Furu	655	324	217		0	279
Gran		347	230		0	272
Lauv	793	388	196	233	0	280
Snitt	703	344	226	233	0	274

Gjennomsnittspris (kr/kbm)

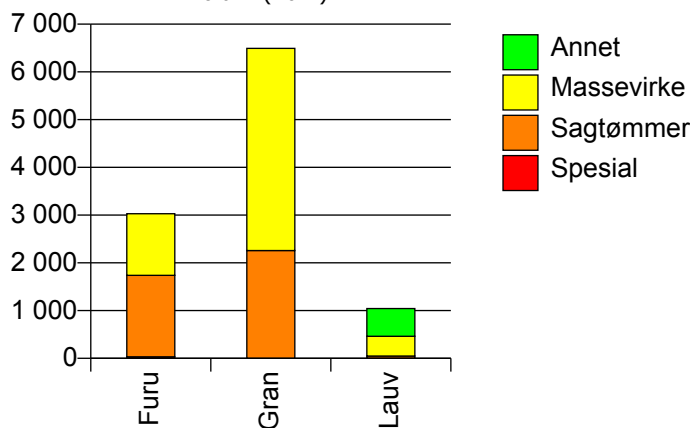


906 ARENDAL

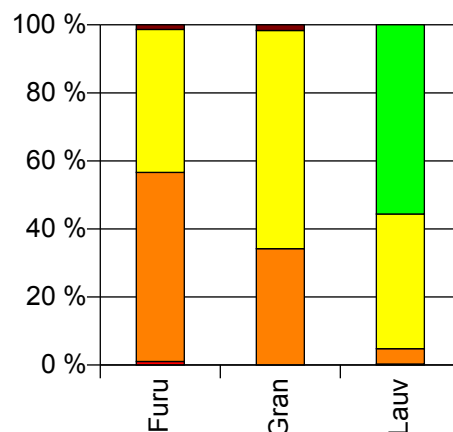
Volum 2009 (kbm)

	Spesial	Sagtømmer	Massevirke	Annet	Vrak	Sum:
Furu	32	1 706	1 290		42	3 070
Gran		2 257	4 235		109	6 601
Lauv	3	47	413	580		1 043
Sum:	35	4 010	5 938	580	151	10 714

Volum (kbm)



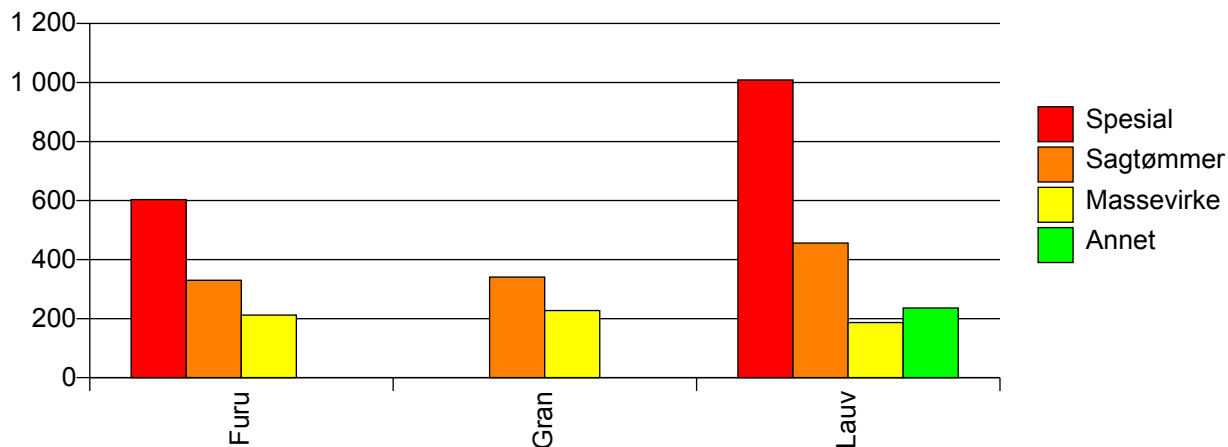
Volum (prosentfordelt)



Gjennomsnittspris 2009 (kr/kbm)

	Spesial	Sagtømmer	Massevirke	Annet	Vrak	Snitt
Furu	603	330	212		0	279
Gran		341	228		0	263
Lauv	1 009	456	187	236		229
Snitt	638	338	221	236	0	264

Gjennomsnittspris (kr/kbm)

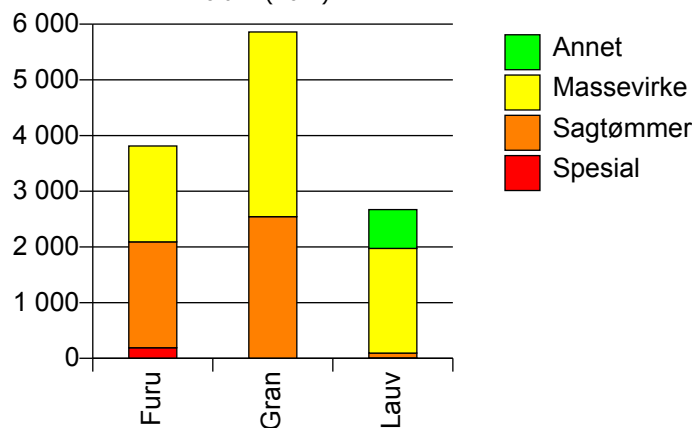


911 GJERSTAD

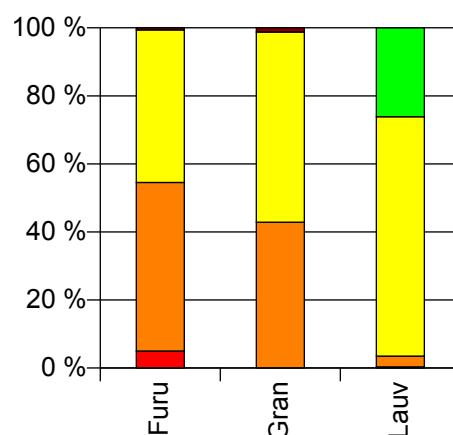
Volum 2009 (kbm)

	Spesial	Sagtømmer	Massevirke	Annet	Vrak	Sum:
Furu	191	1 901	1 720		23	3 835
Gran		2 543	3 316		74	5 933
Lauv	9	85	1 879	698		2 671
Sum:	200	4 529	6 915	698	97	12 439

Volum (kbm)



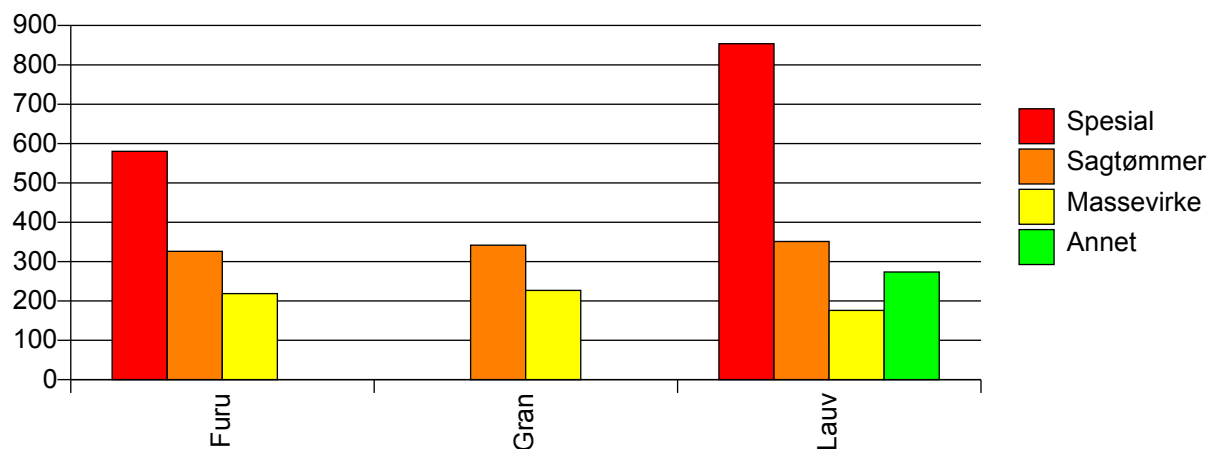
Volum (prosentfordelt)



Gjennomsnittspris 2009 (kr/kbm)

	Spesial	Sagtømmer	Massevirke	Annet	Vrak	Snitt
Furu	580	326	219		0	289
Gran		342	227		0	273
Lauv	854	351	176	274		209
Snitt	593	335	211	274	0	264

Gjennomsnittspris (kr/kbm)

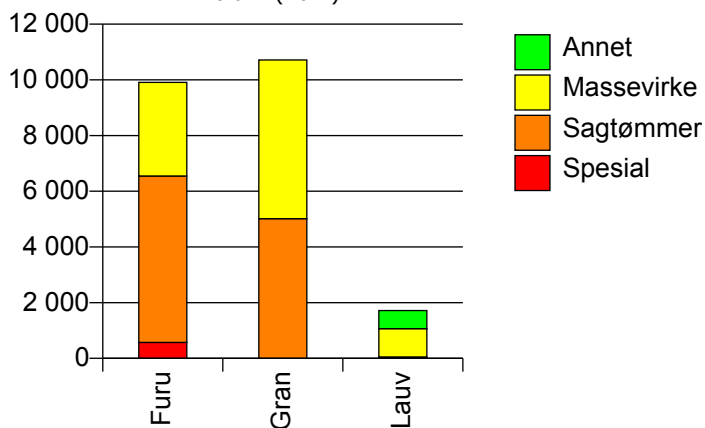


912 VEGÅRSHEI

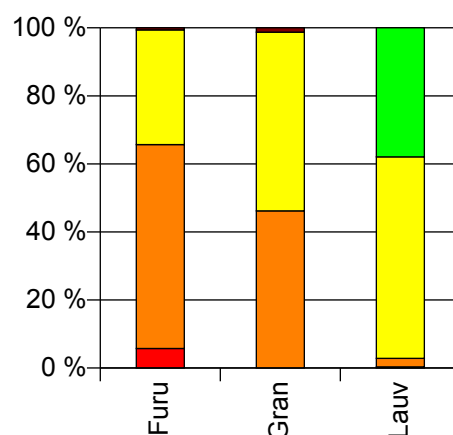
Volum 2009 (kbm)

	Spesial	Sagtømmer	Massevirke	Annet	Vrak	Sum:
Furu	574	5 975	3 363		62	9 974
Gran		5 015	5 699		137	10 851
Lauv	6	43	1 016	651		1 716
Sum:	580	11 033	10 078	651	199	22 541

Volum (kbm)



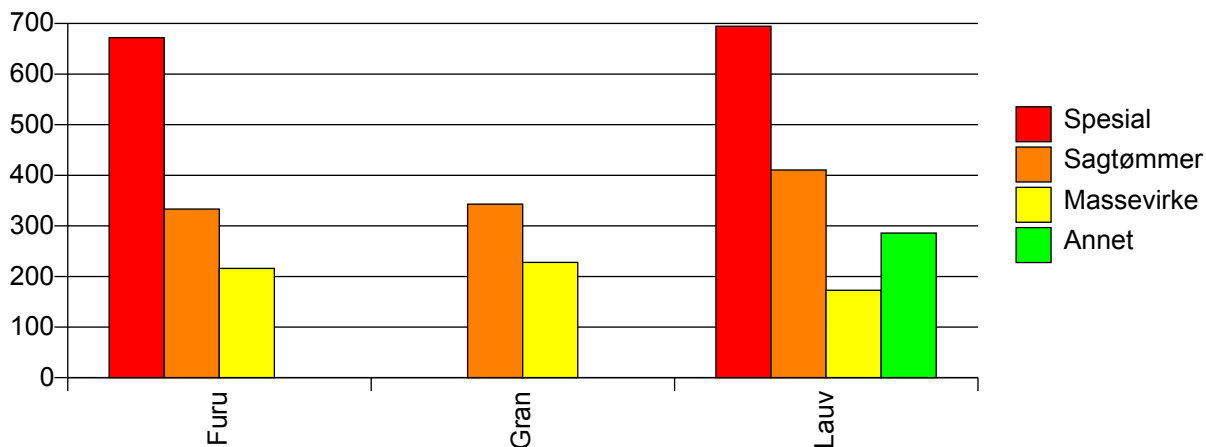
Volum (prosentfordelt)



Gjennomsnittspris 2009 (kr/kbm)

	Spesial	Sagtømmer	Massevirke	Annet	Vrak	Snitt
Furu	672	333	216		0	311
Gran		343	228		0	278
Lauv	695	411	173	286		223
Snitt	672	338	218	286	0	289

Gjennomsnittspris (kr/kbm)

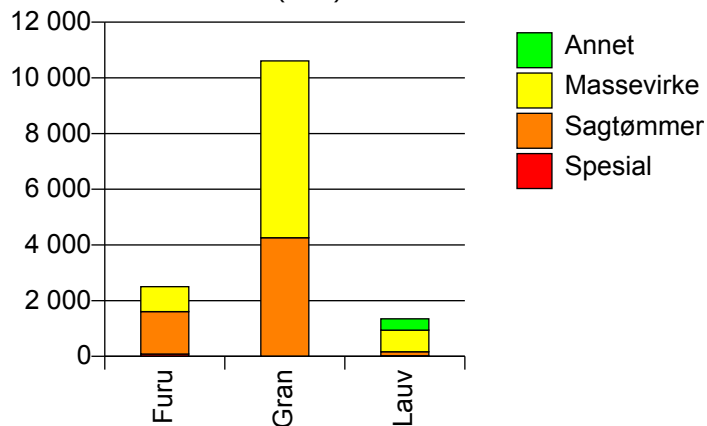


914 TVEDESTRAND

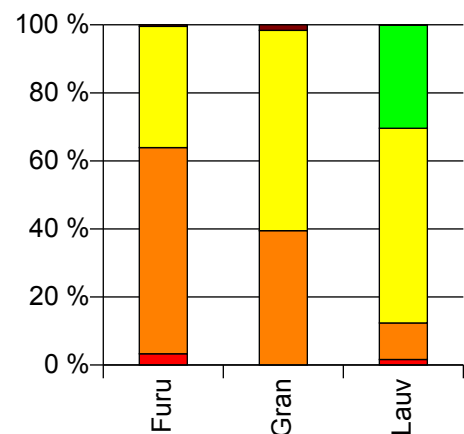
Volum 2009 (kbm)

	Spesial	Sagtømmer	Massevirke	Annet	Vrak	Sum:
Furu	83	1 523	896		11	2 513
Gran		4 259	6 348		176	10 783
Lauv	22	145	772	409	1	1 349
Sum:	105	5 927	8 016	409	188	14 645

Volum (kbm)



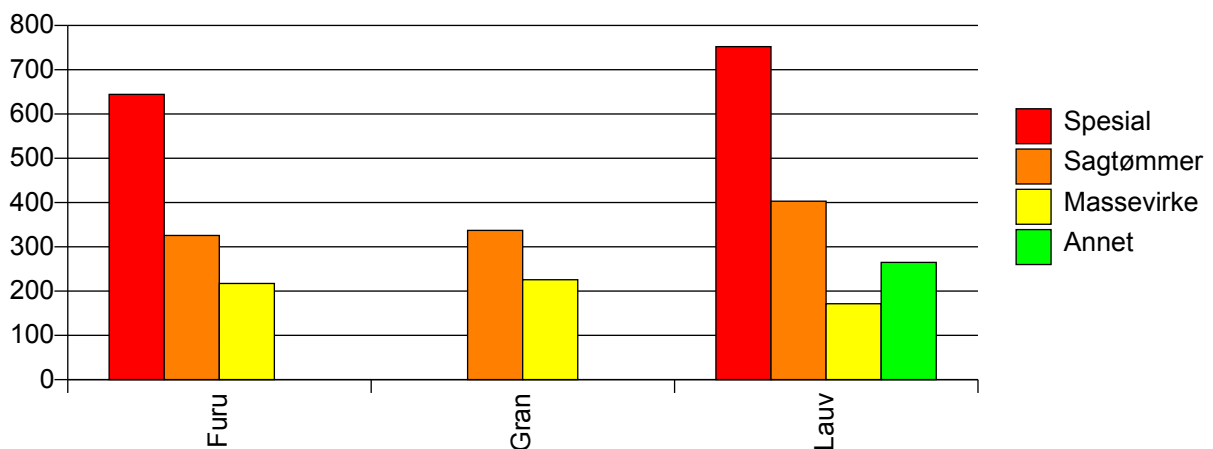
Volum (prosentfordelt)



Gjennomsnittspris 2009 (kr/kbm)

	Spesial	Sagtømmer	Massevirke	Annet	Vrak	Snitt
Furu	644	326	217		0	296
Gran		337	226		0	266
Lauv	752	403	171	265	0	234
Snitt	667	336	220	265	0	268

Gjennomsnittspris (kr/kbm)

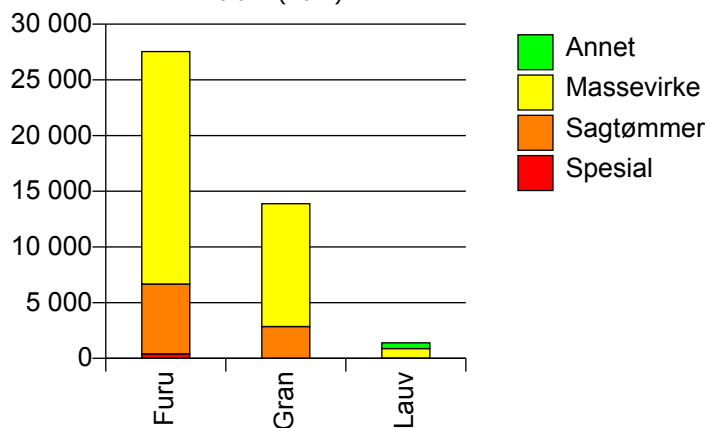


919 FROLAND

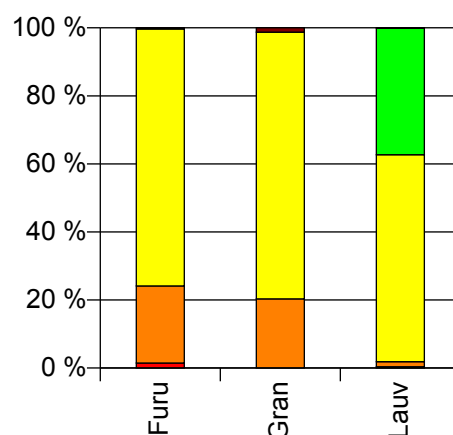
Volum 2009 (kbm)

	Spesial	Sagtømmer	Massevirke	Annet	Vrak	Sum:
Furu	401	6 270	20 870		88	27 629
Gran		2 860	11 023		180	14 063
Lauv	5	21	851	521	1	1 399
Sum:	406	9 151	32 744	521	269	43 091

Volum (kbm)



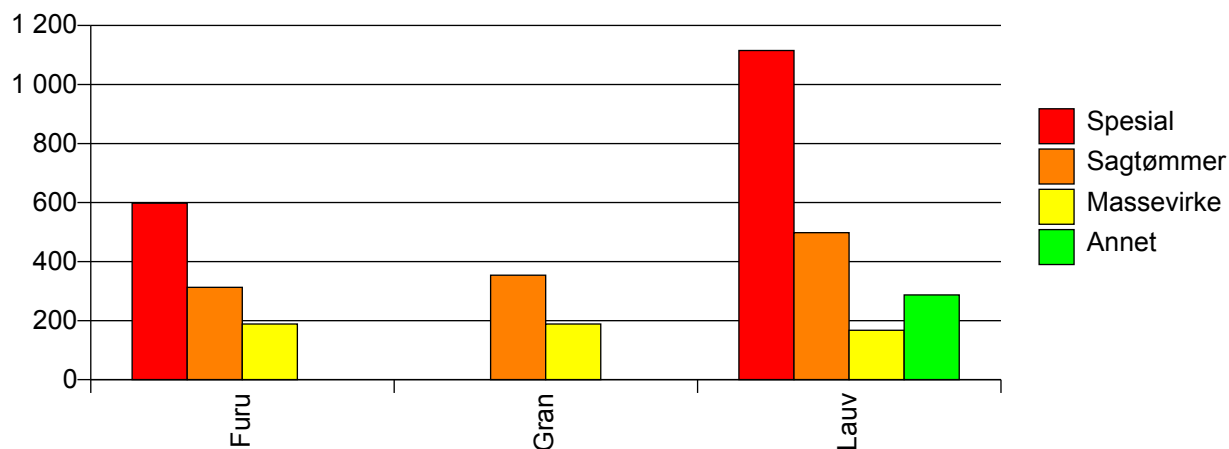
Volum (prosentfordelt)



Gjennomsnittspris 2009 (kr/kbm)

	Spesial	Sagtømmer	Massevirke	Annet	Vrak	Snitt
Furu	598	313	189		0	222
Gran		354	189		0	220
Lauv	1 115	498	167	287	0	220
Snitt	604	326	188	287	0	221

Gjennomsnittspris (kr/kbm)

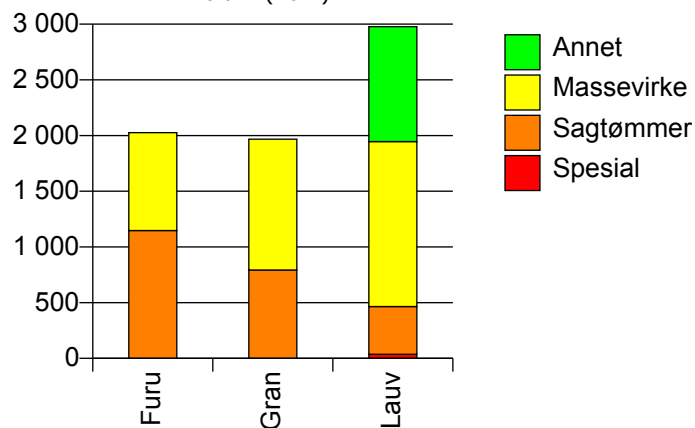


926 LILLESAND

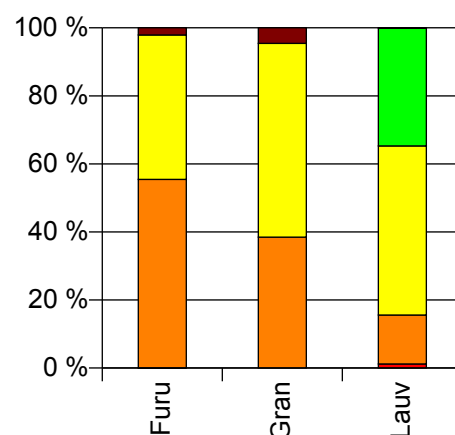
Volum 2009 (kbm)

	Spesial	Sagtømmer	Massevirke	Annet	Vrak	Sum:
Furu	1	1 146	879		43	2 069
Gran		793	1 174		94	2 061
Lauv	36	429	1 481	1 032	3	2 981
Sum:	37	2 368	3 534	1 032	140	7 111

Volum (kbm)



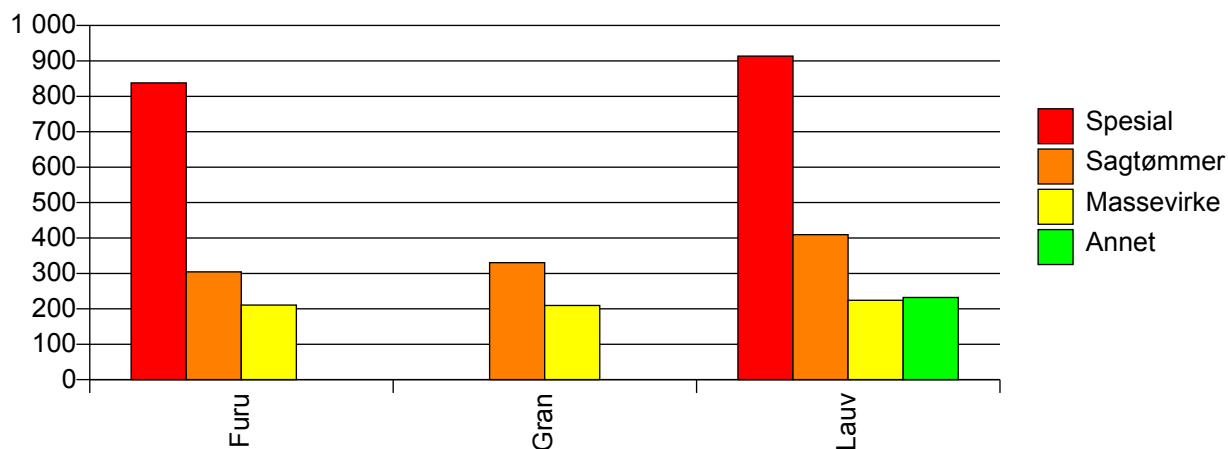
Volum (prosentfordelt)



Gjennomsnittspris 2009 (kr/kbm)

	Spesial	Sagtømmer	Massevirke	Annet	Vrak	Snitt
Furu	838	304	211		0	259
Gran		330	210		0	247
Lauv	914	409	224	232	0	262
Snitt	912	332	216	232	0	256

Gjennomsnittspris (kr/kbm)

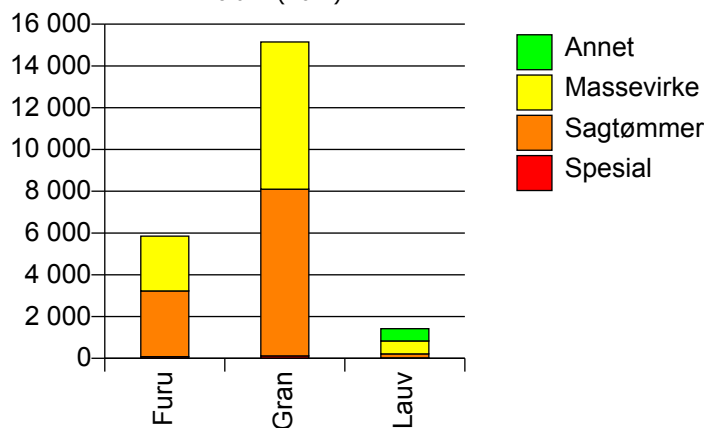


928 BIRKENES

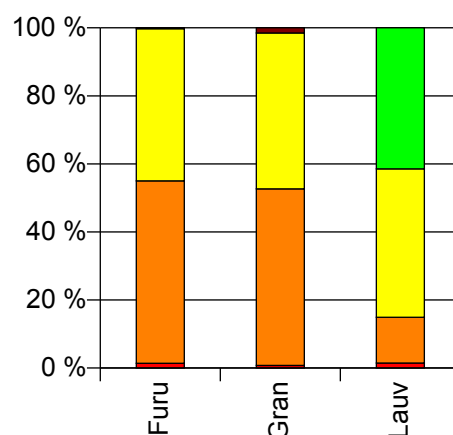
Volum 2009 (kbm)

	Spesial	Sagtømmer	Massevirke	Annet	Vrak	Sum:
Furu	82	3 146	2 625		16	5 869
Gran	115	7 985	7 045		234	15 379
Lauv	21	191	621	590		1 423
Sum:	218	11 322	10 291	590	250	22 671

Volum (kbm)



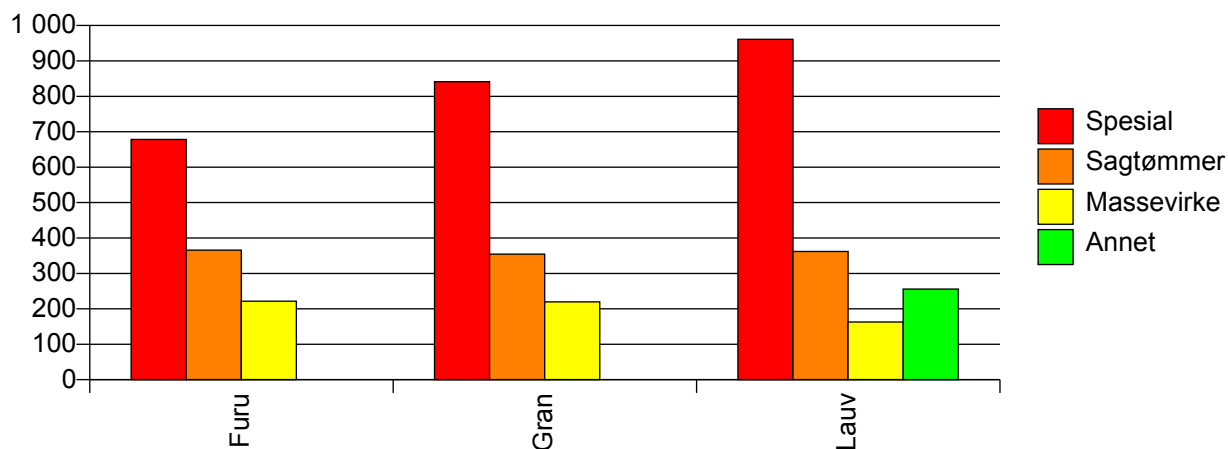
Volum (prosentfordelt)



Gjennomsnittspris 2009 (kr/kbm)

	Spesial	Sagtømmer	Massevirke	Annet	Vrak	Snitt
Furu	678	366	222		0	305
Gran	841	355	220		0	291
Lauv	961	362	163	256		240
Snitt	792	358	217	256	0	291

Gjennomsnittspris (kr/kbm)

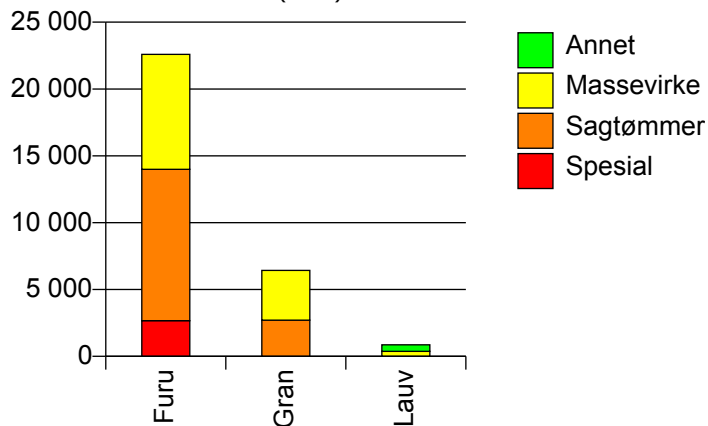


929 ÅMLI

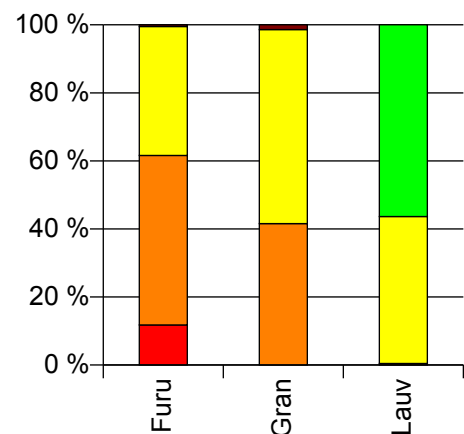
Volum 2009 (kbm)

	Spesial	Sagtømmer	Massevirke	Annet	Vrak	Sum:
Furu	2 673	11 315	8 606		114	22 708
Gran		2 710	3 716		91	6 517
Lauv		4	373	487		864
Sum:	2 673	14 029	12 695	487	205	30 089

Volum (kbm)



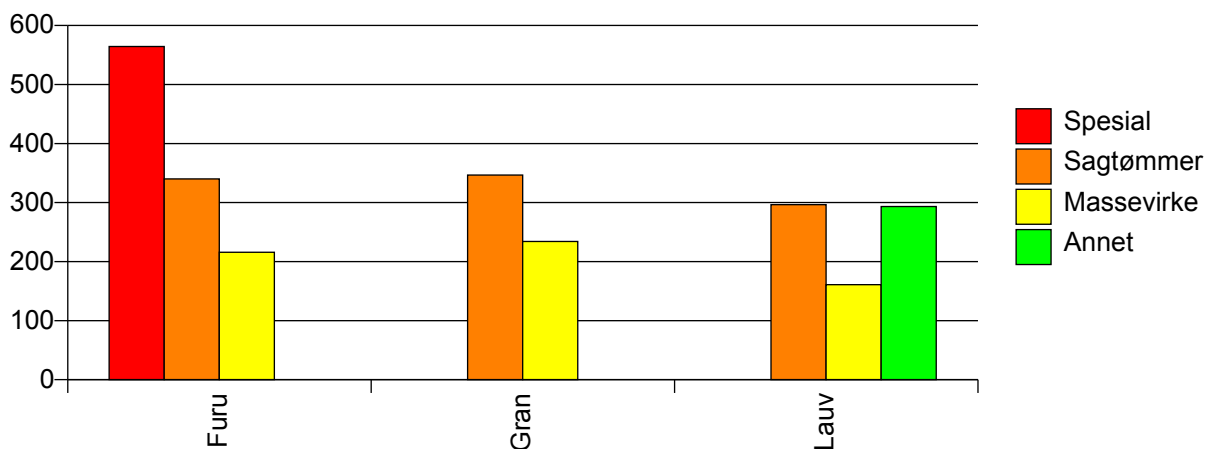
Volum (prosentfordelt)



Gjennomsnittspris 2009 (kr/kbm)

	Spesial	Sagtømmer	Massevirke	Annet	Vrak	Snitt
Furu	565	340	216		0	318
Gran		347	234		0	278
Lauv		297	161	293		236
Snitt	565	341	220	293	0	307

Gjennomsnittspris (kr/kbm)

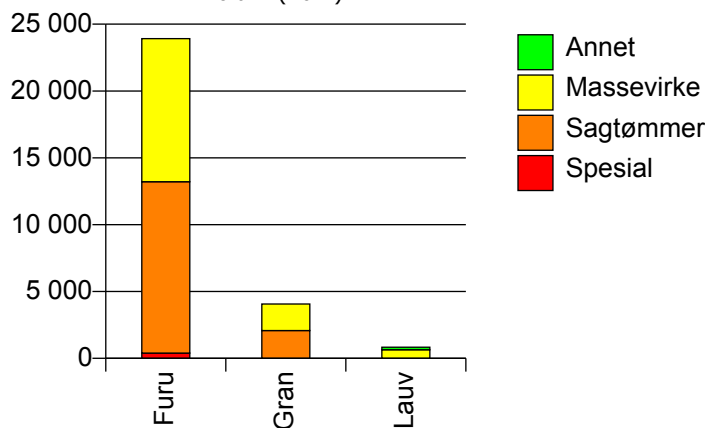


935 IVELAND

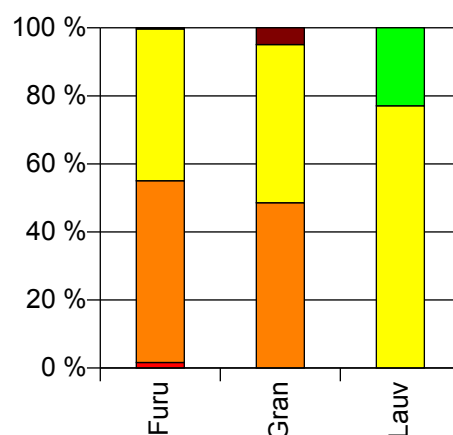
Volum 2009 (kbm)

	Spesial	Sagtømmer	Massevirke	Annet	Vrak	Sum:
Furu	390	12 820	10 712		78	24 000
Gran		2 080	1 990		210	4 280
Lauv			642	191		833
Sum:	390	14 900	13 344	191	288	29 113

Volum (kbm)



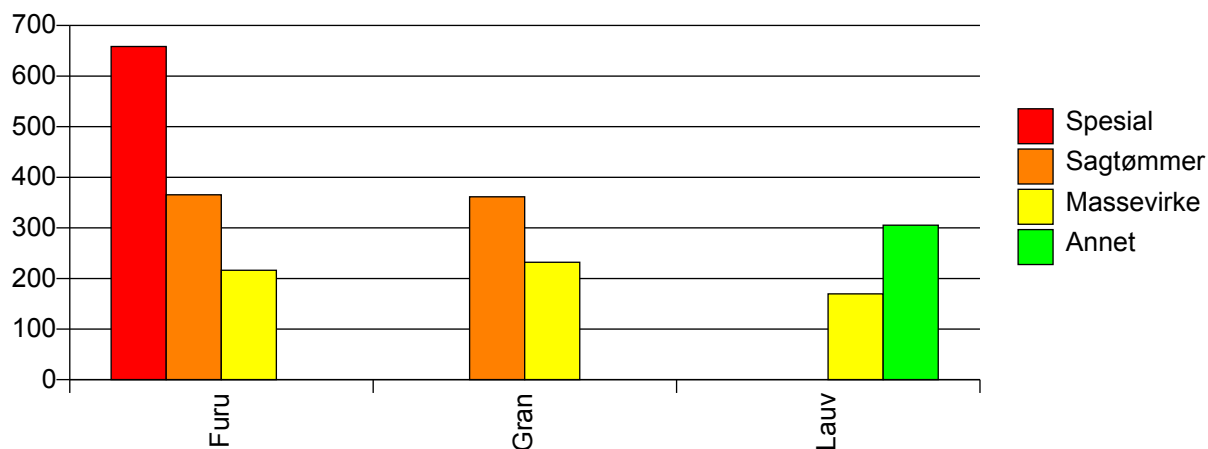
Volum (prosentfordelt)



Gjennomsnittspris 2009 (kr/kbm)

	Spesial	Sagtømmer	Massevirke	Annet	Vrak	Snitt
Furu	658	365	216		0	302
Gran		361	232		0	284
Lauv			169	305		201
Snitt	658	365	216	305	0	297

Gjennomsnittspris (kr/kbm)

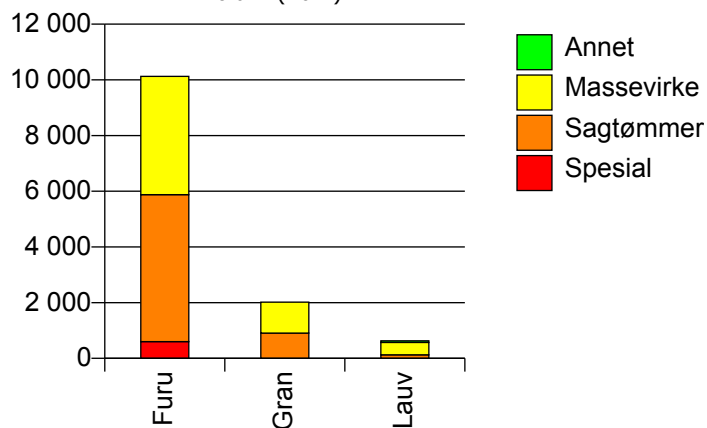


937 EVJE OG HORNNES

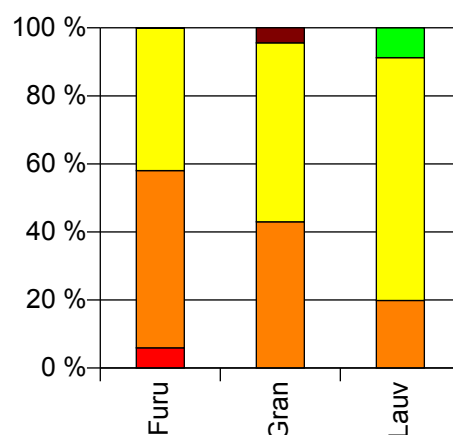
Volum 2009 (kbm)

	Spesial	Sagtømmer	Massevirke	Annet	Vrak	Sum:
Furu	601	5 277	4 247		5	10 130
Gran		907	1 111		93	2 111
Lauv		125	449	55		629
Sum:	601	6 309	5 807	55	98	12 870

Volum (kbm)



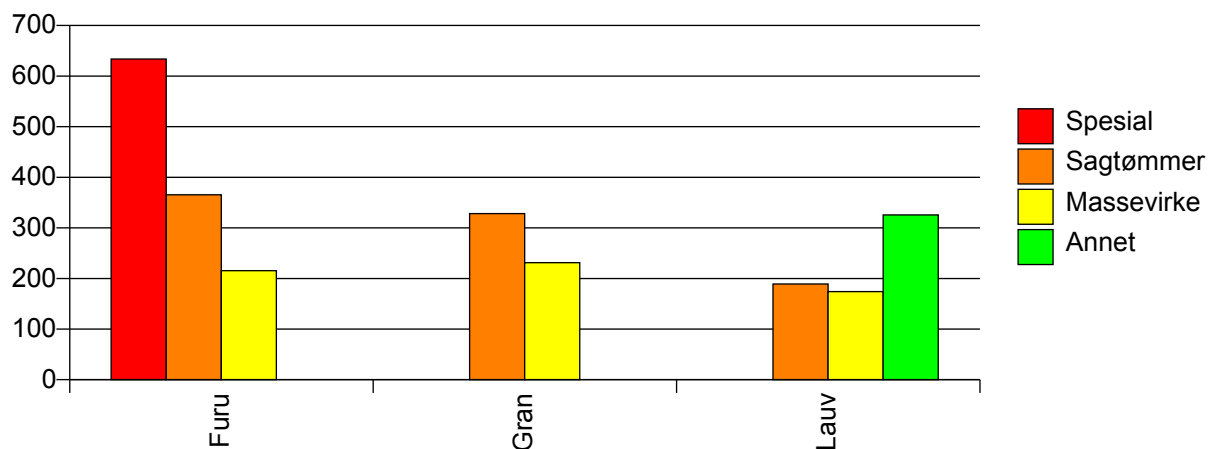
Volum (prosentfordelt)



Gjennomsnittspris 2009 (kr/kbm)

	Spesial	Sagtømmer	Massevirke	Annet	Vrak	Snitt
Furu	634	365	216		0	318
Gran		328	231		0	263
Lauv		189	174	326		190
Snitt	634	356	215	326	0	303

Gjennomsnittspris (kr/kbm)

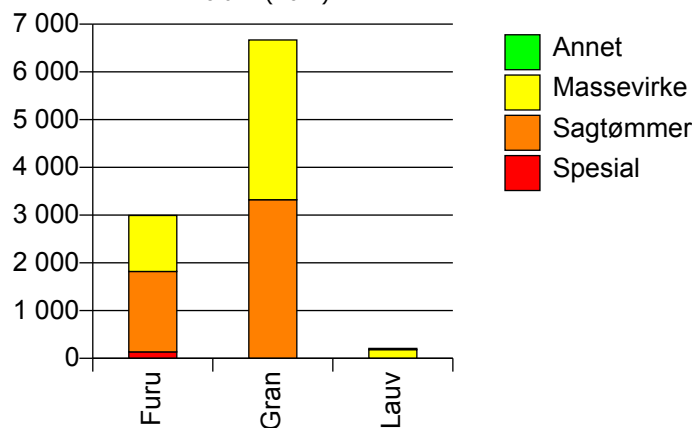


938 BYGLAND

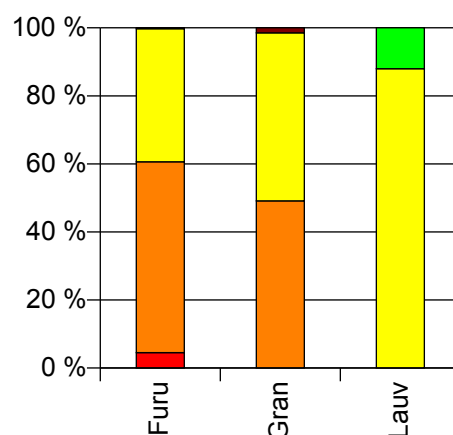
Volum 2009 (kbm)

	Spesial	Sagtømmer	Massevirke	Annet	Vrak	Sum:
Furu	136	1 683	1 174		8	3 001
Gran		3 324	3 344		99	6 767
Lauv			183	25		208
Sum:	136	5 007	4 701	25	107	9 976

Volum (kbm)



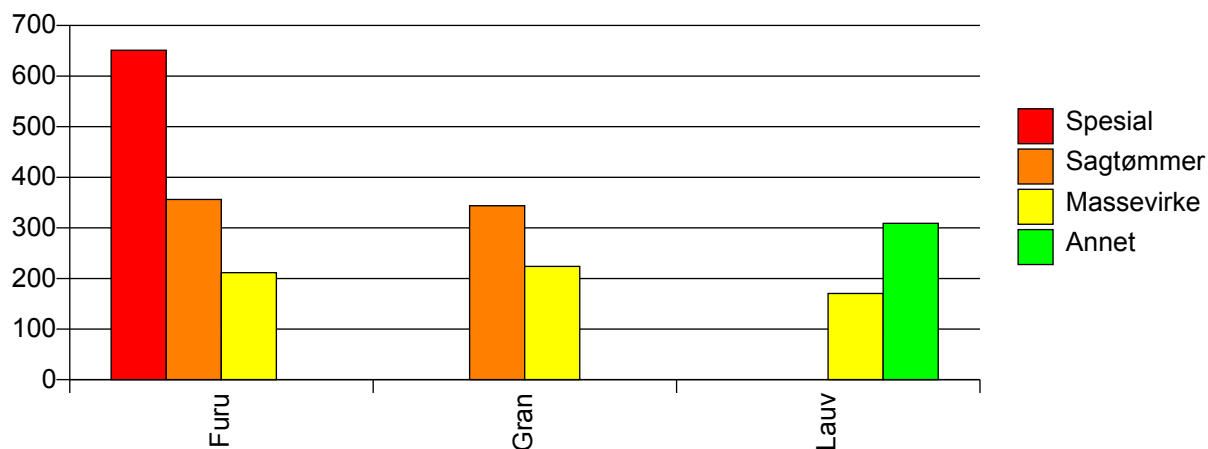
Volum (prosentfordelt)



Gjennomsnittspris 2009 (kr/kbm)

	Spesial	Sagtømmer	Massevirke	Annet	Vrak	Snitt
Furu	651	356	212		0	312
Gran		344	224		0	280
Lauv			170	309		187
Snitt	651	348	219	309	0	287

Gjennomsnittspris (kr/kbm)

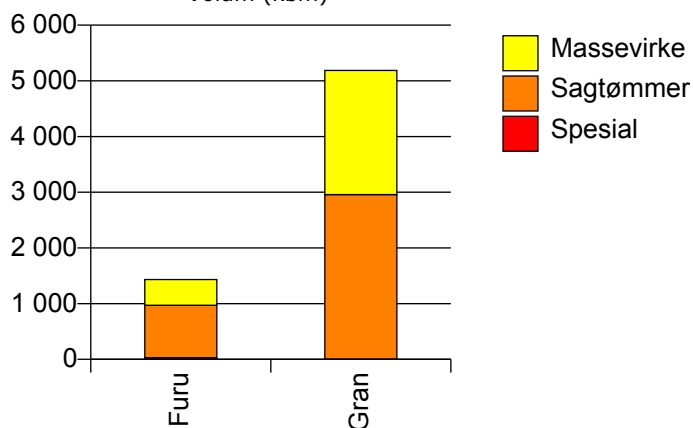


940 VALLE

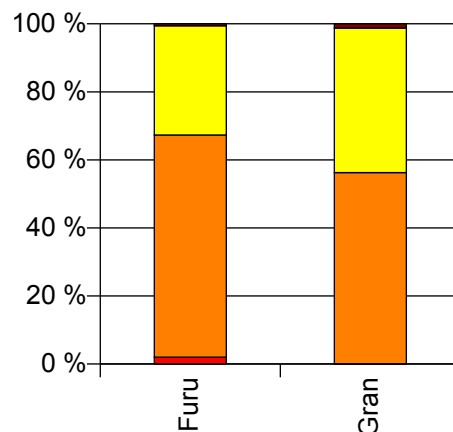
Volum 2009 (kbm)

	Spesial	Sagtømmer	Massevirke	Vrak	Sum:
Furu	29	941	463	8	1 441
Gran	5	2 952	2 231	65	5 253
Sum:	34	3 893	2 694	73	6 694

Volum (kbm)



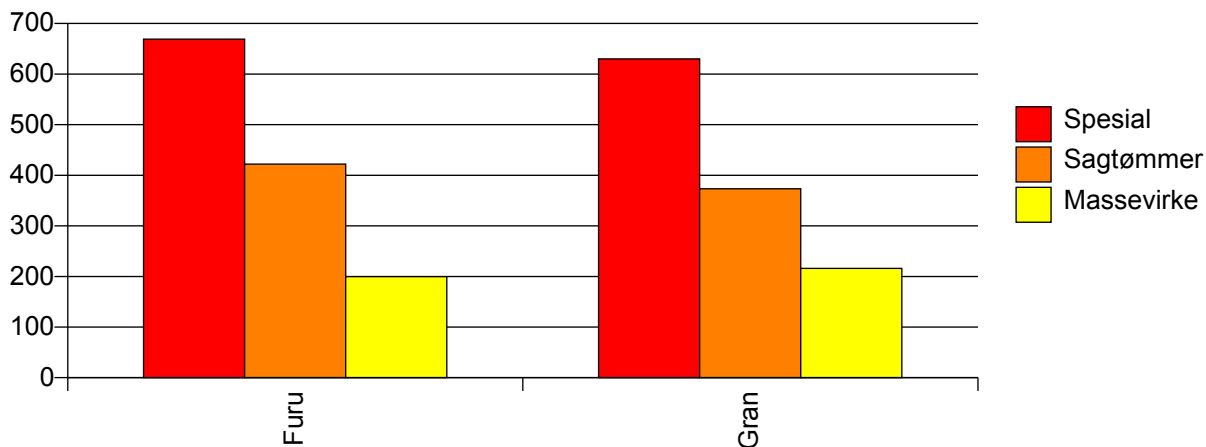
Volum (prosentfordelt)



Gjennomsnittspris 2009 (kr/kbm)

	Spesial	Sagtømmer	Massevirke	Vrak	Snitt
Furu	669	422	200	0	353
Gran	630	373	216	0	302
Snitt	663	385	213	0	313

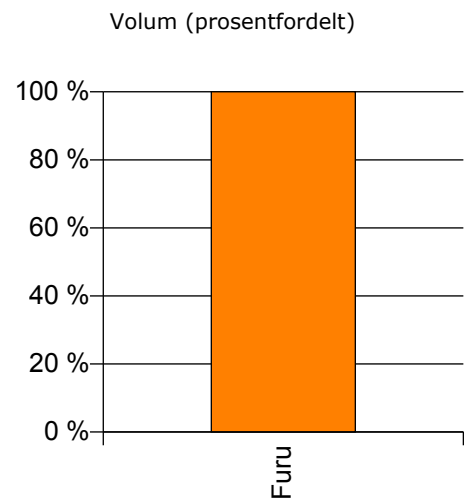
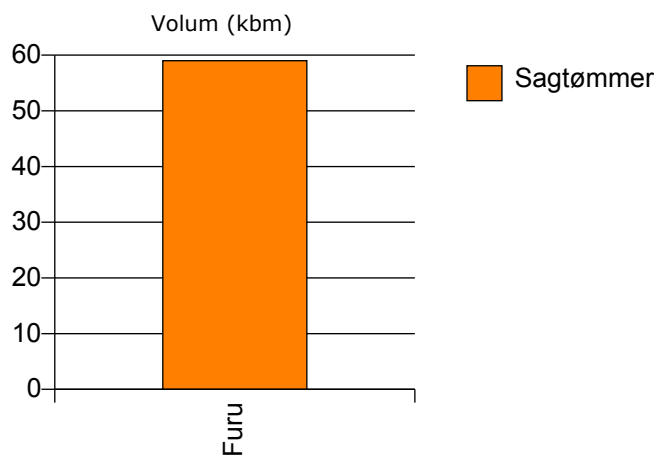
Gjennomsnittspris (kr/kbm)



941 BYKLE

Volum 2009 (kbm)

	Sagtømmer	Sum:
Furu	59	59
Sum:	59	59



Gjennomsnittspris 2009 (kr/kbm)

Furu	300	300
Snitt	300	300

