

Virkestatistikk fra

SKOG-DATA AS

Østfold m/kommuner

Dataene i rapporten er hentet fra databasen som inneholder virkesdata med tilhørende innbetalinger av skogavgift. Rapporten er laget med Business Objects, som er sluttbrukerverktøyet i Skog-Data sine nye datavarehus-løsninger. Business Objects er ett meget sterkt rapportverktøy som kan presentere store mengder data effektivt.

Rapportene kan lastes ned fra www.skogdata.no/statistikk

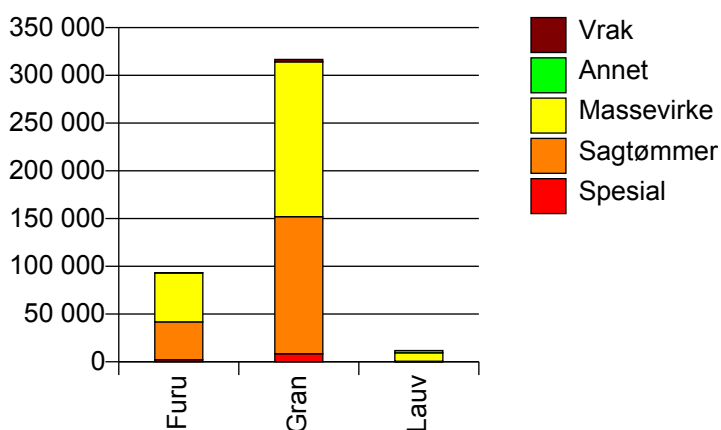
For mer informasjon, kontakt: tabh@skogdata.no

Østfold

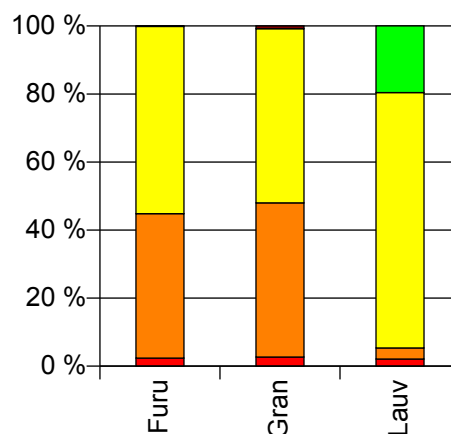
Volum 2009

	Spesial	Sagtømmer	Massevirke	Annet	Vrak	Sum:
Furu	2 222	39 651	51 390		143	93 406
Gran	8 496	143 477	162 137	37	2 547	316 694
Lauv	249	382	8 866	2 312		11 809
Sum:	10 967	183 510	222 393	2 349	2 690	421 909

Volum (kbm)



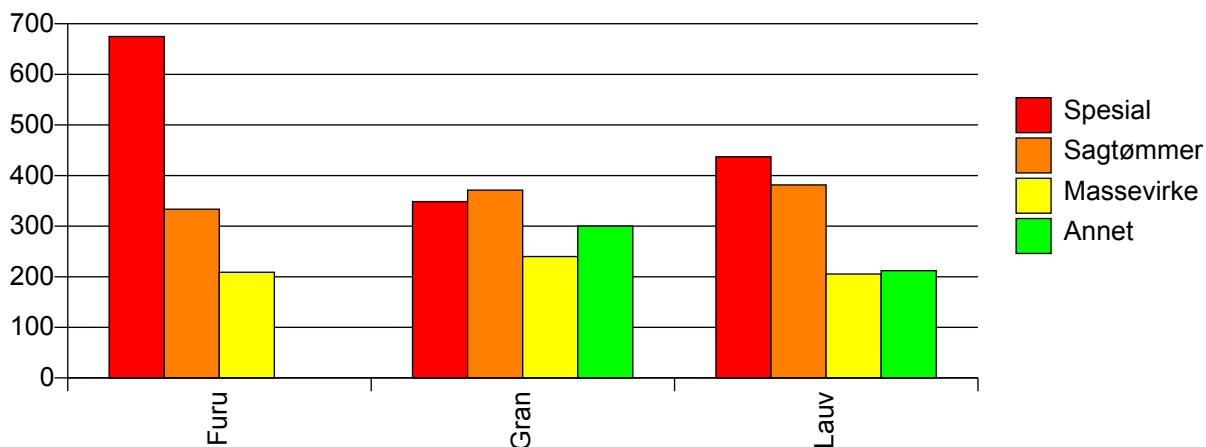
Volum (prosentfordelt)



Gjennomsnittspris 2009 (kr/kbm)

	Spesial	Sagtømmer	Massevirke	Annet	Vrak	Snitt:
Furu	675	333	209		0	272
Gran	349	371	240	300	0	300
Lauv	437	381	205	212		217
Snitt:	417	363	231	213	0	292

Gjennomsnittspris (kr/kbm)

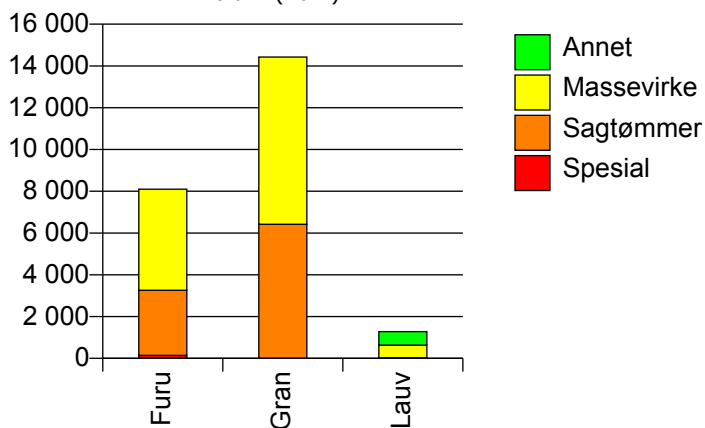


121 RØMSKOG

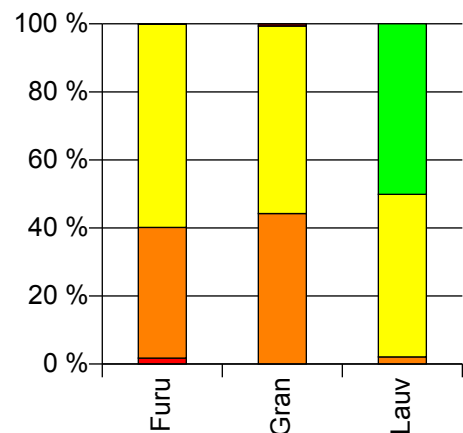
Volum 2009 (kbm)

	Spesial	Sagtømmer	Massevirke	Annet	Vrak	Sum:
Furu	142	3 115	4 845		8	8 110
Gran		6 422	8 006		92	14 520
Lauv		27	610	640		1 277
Sum:	142	9 564	13 461	640	100	23 907

Volum (kbm)



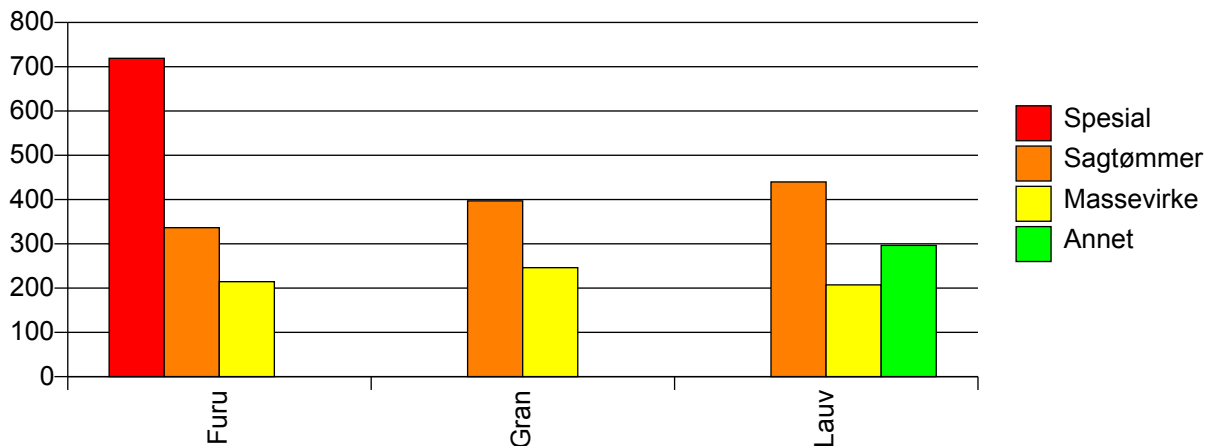
Volum (prosentfordelt)



Gjennomsnittspris 2009 (kr/kbm)

	Spesial	Sagtømmer	Massevirke	Annet	Vrak	Snitt
Furu	719	337	215		0	270
Gran		397	246		0	312
Lauv		440	207	297		257
Snitt	719	378	233	297	0	295

Gjennomsnittspris (kr/kbm)

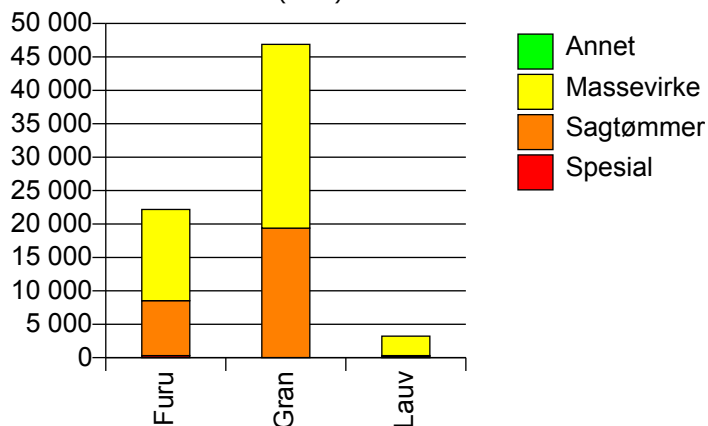


101 HALDEN

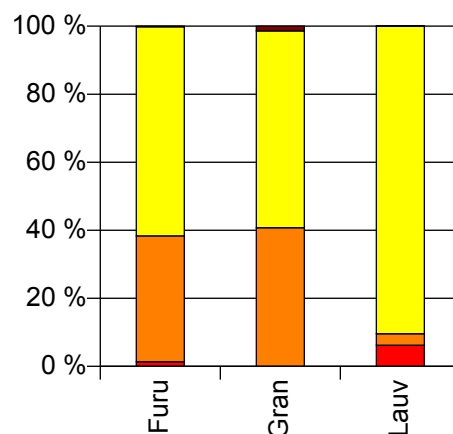
Volum 2009 (kbm)

	Spesial	Sagtømmer	Massevirke	Annet	Vrak	Sum:
Furu	302	8 221	13 646		41	22 210
Gran		19 379	27 489		668	47 536
Lauv	201	109	2 921	1		3 232
Sum:	503	27 709	44 056	1	709	72 978

Volum (kbm)



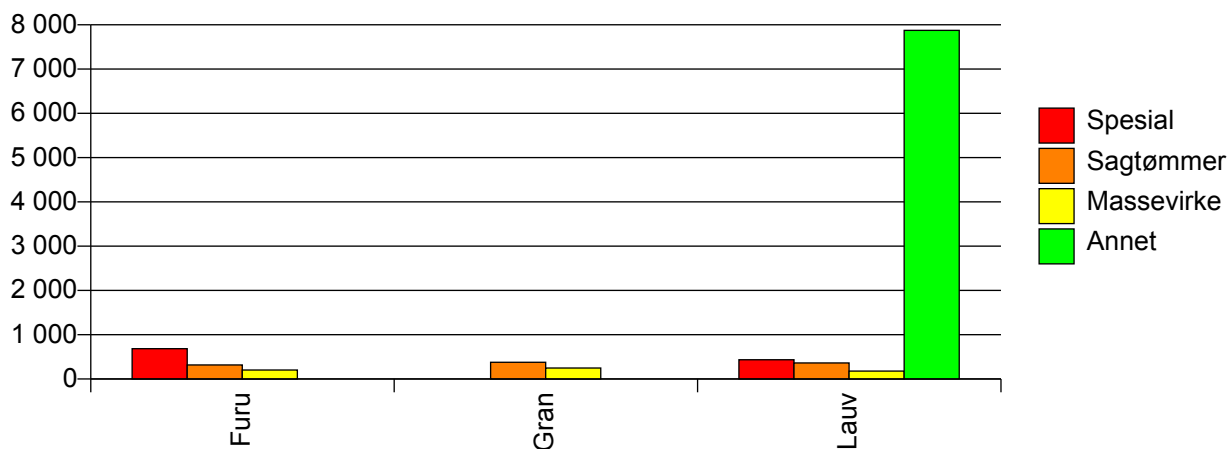
Volum (prosentfordelt)



Gjennomsnittspris 2009 (kr/kbm)

	Spesial	Sagtømmer	Massevirke	Annet	Vrak	Snitt
Furu	684	319	203		0	252
Gran		378	249		0	298
Lauv	436	364	180	7 876		204
Snitt	585	361	230	7 876	0	280

Gjennomsnittspris (kr/kbm)

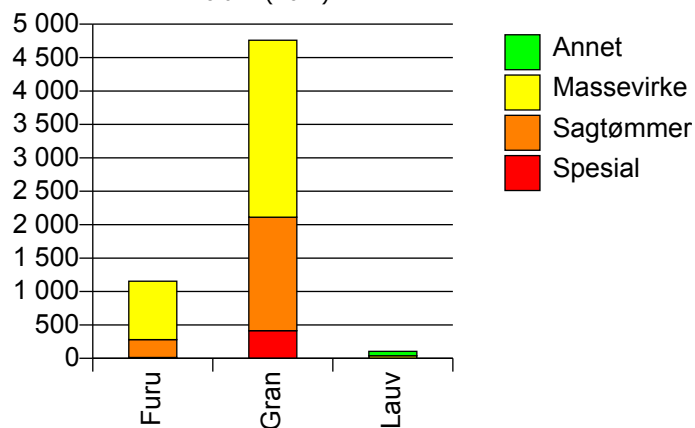


104 MOSS

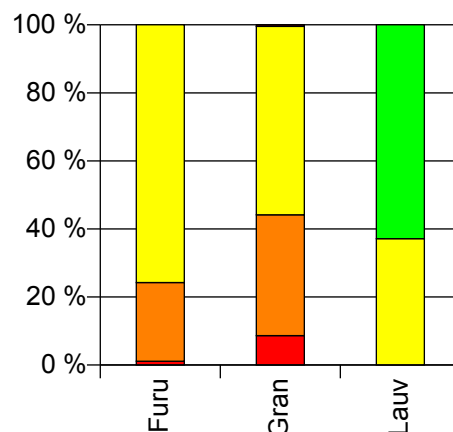
Volum 2009 (kbm)

	Spesial	Sagtømmer	Massevirke	Annet	Vrak	Sum:
Furu	13	267	874			1 154
Gran	414	1 698	2 647		22	4 781
Lauv			39	66		105
Sum:	427	1 965	3 560	66	22	6 040

Volum (kbm)



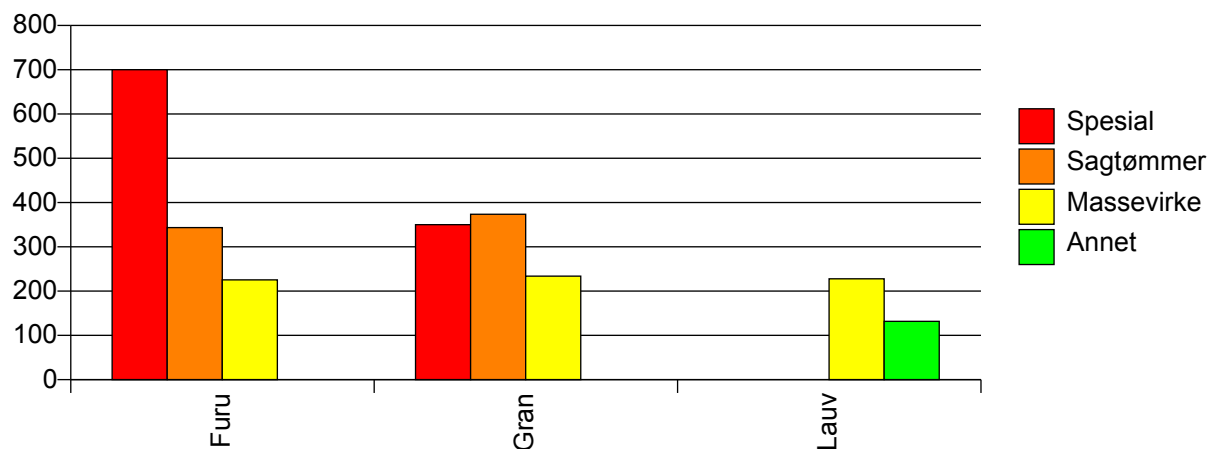
Volum (prosentfordelt)



Gjennomsnittspris 2009 (kr/kbm)

	Spesial	Sagtømmer	Massevirke	Annet	Vrak	Snitt
Furu	700	343	225			258
Gran	350	374	234		0	293
Lauv			228	132		167
Snitt	361	369	232	132	0	284

Gjennomsnittspris (kr/kbm)

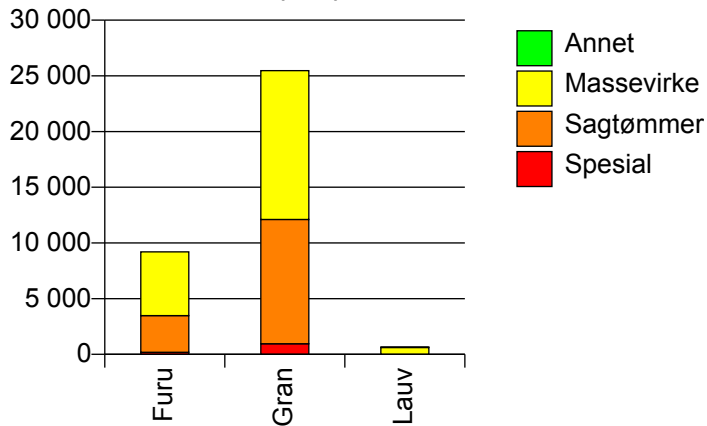


105 SARPSBORG

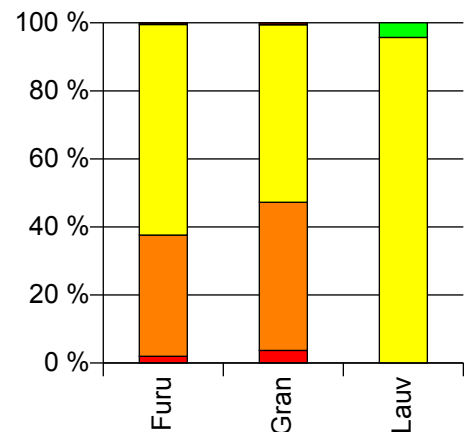
Volum 2009 (kbm)

	Spesial	Sagtømmer	Massevirke	Annet	Vrak	Sum:
Furu	184	3 296	5 724		46	9 250
Gran	946	11 166	13 362		150	25 624
Lauv			622	28		650
Sum:	1 130	14 462	19 708	28	196	35 524

Volum (kbm)



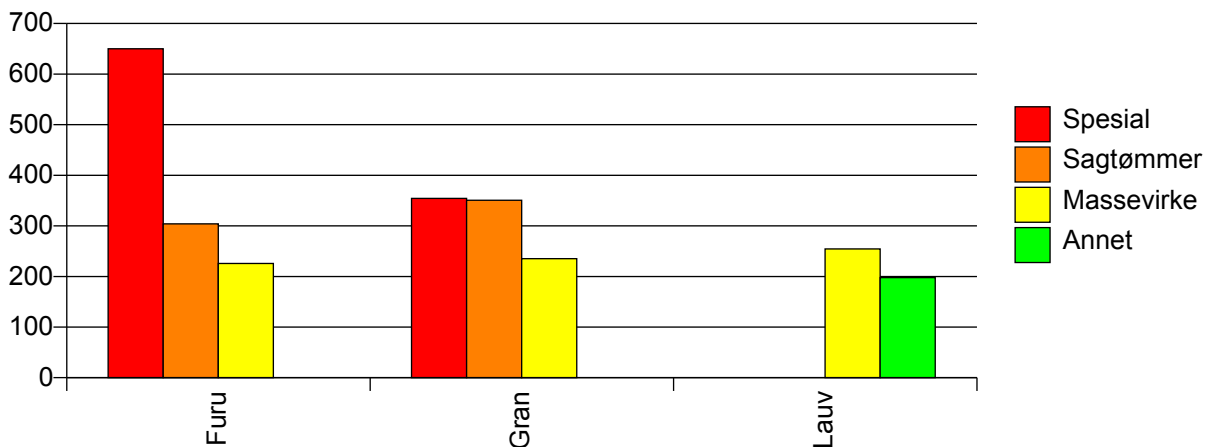
Volum (prosentfordelt)



Gjennomsnittspris 2009 (kr/kbm)

	Spesial	Sagtømmer	Massevirke	Annet	Vrak	Snitt
Furu	650	304	226		0	261
Gran	354	351	235		0	288
Lauv			254	198		252
Snitt	403	340	233	198	0	281

Gjennomsnittspris (kr/kbm)

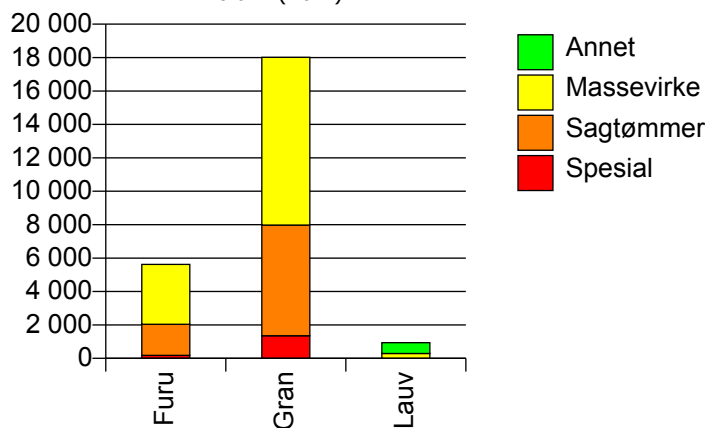


106 FREDRIKSTAD

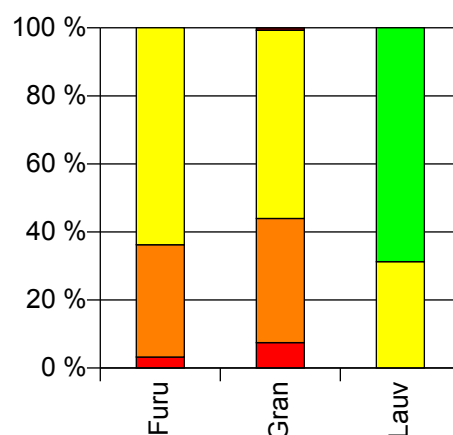
Volum 2009 (kbm)

	Spesial	Sagtømmer	Massevirke	Annet	Vrak	Sum:
Furu	182	1 857	3 585			5 624
Gran	1 352	6 623	10 040		133	18 148
Lauv			293	644		937
Sum:	1 534	8 480	13 918	644	133	24 709

Volum (kbm)



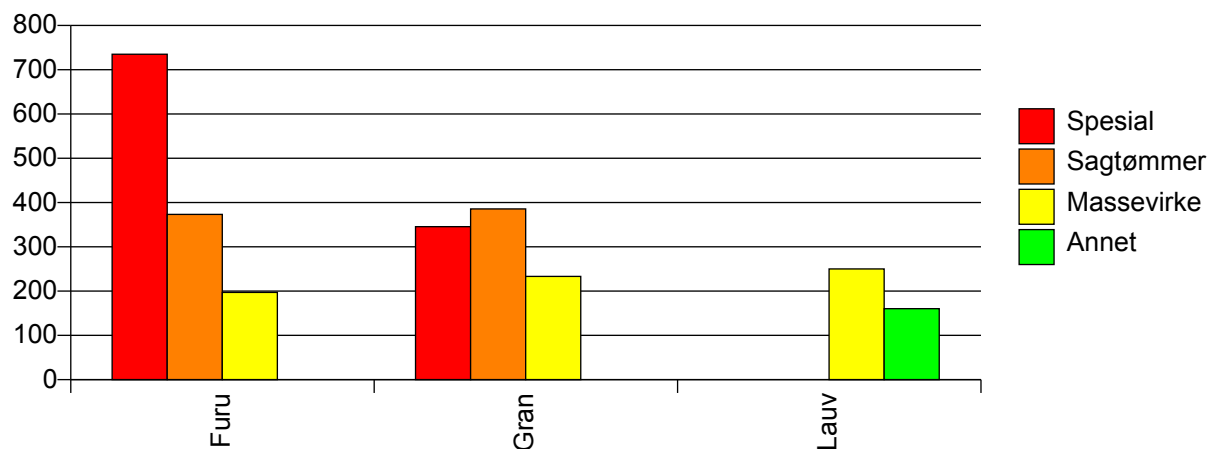
Volum (prosentfordelt)



Gjennomsnittspris 2009 (kr/kbm)

	Spesial	Sagtømmer	Massevirke	Annet	Vrak	Snitt
Furu	735	373	197			273
Gran	346	386	233		0	296
Lauv			250	160		188
Snitt	392	383	224	160	0	286

Gjennomsnittspris (kr/kbm)

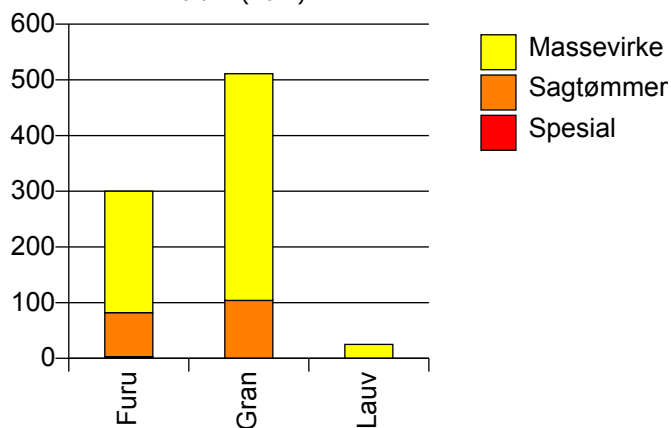


111 HVALER

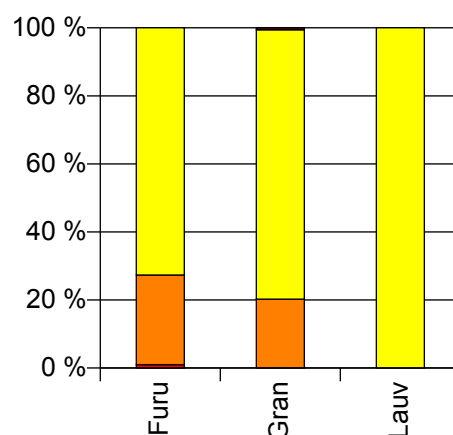
Volum 2009 (kbm)

	Spesial	Sagtømmer	Massevirke	Vrak	Sum:
Furu	3	79	218		300
Gran		104	407	3	514
Lauv			25		25
Sum:	3	183	650	3	839

Volum (kbm)



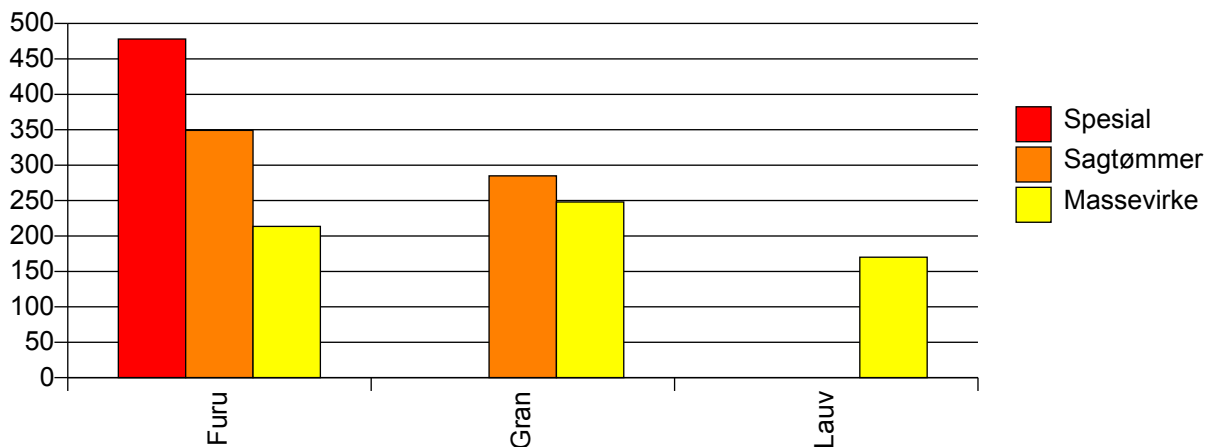
Volum (prosentfordelt)



Gjennomsnittspris 2009 (kr/kbm)

	Spesial	Sagtømmer	Massevirke	Vrak	Snitt
Furu	478	349	214		252
Gran		285	248	0	254
Lauv			170		170
Snitt	478	313	233	0	251

Gjennomsnittspris (kr/kbm)

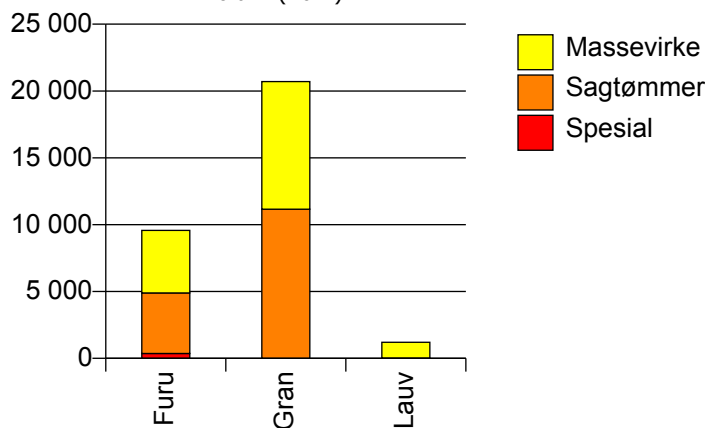


118 AREMARK

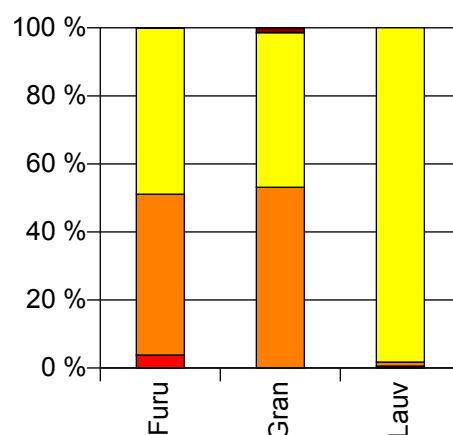
Volum 2009 (kbm)

	Spesial	Sagtømmer	Massevirke	Vrak	Sum:
Furu	367	4 529	4 677	10	9 583
Gran		11 159	9 547	302	21 008
Lauv	7	14	1 179		1 200
Sum:	374	15 702	15 403	312	31 791

Volum (kbm)



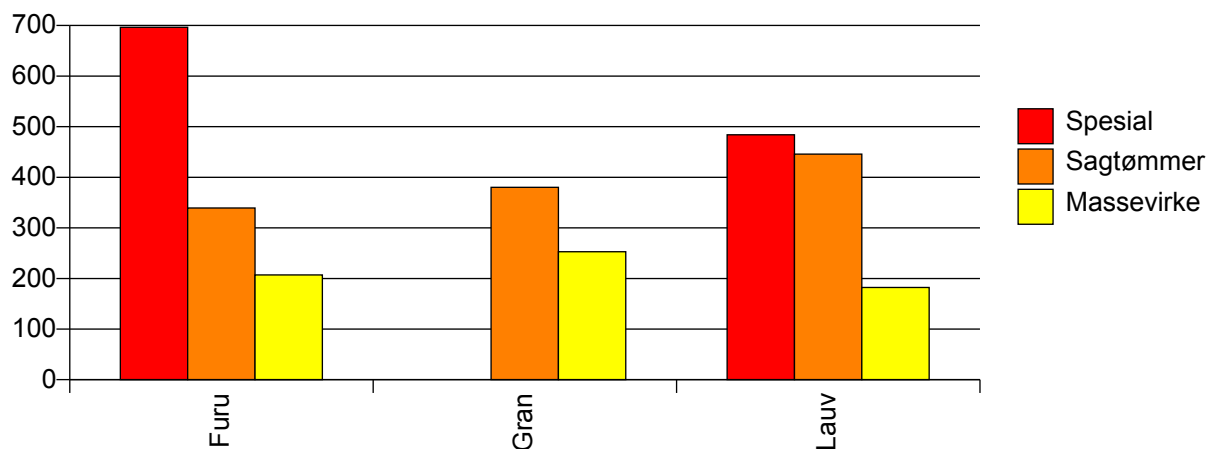
Volum (prosentfordelt)



Gjennomsnittspris 2009 (kr/kbm)

	Spesial	Sagtømmer	Massevirke	Vrak	Snitt
Furu	696	339	207	0	288
Gran		380	253	0	317
Lauv	484	446	182		187
Snitt	692	368	234	0	303

Gjennomsnittspris (kr/kbm)

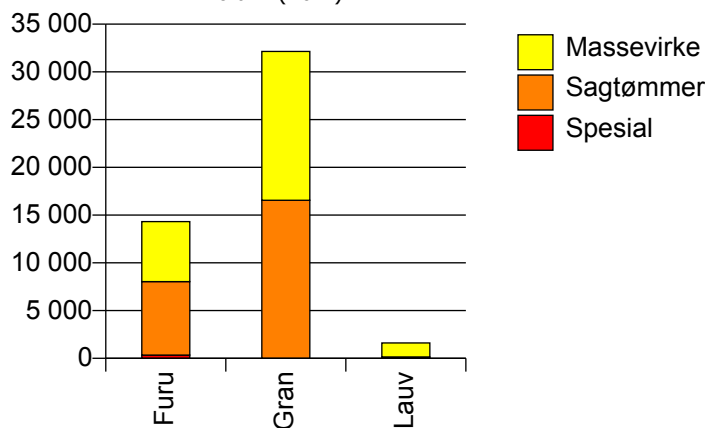


119 MARKER

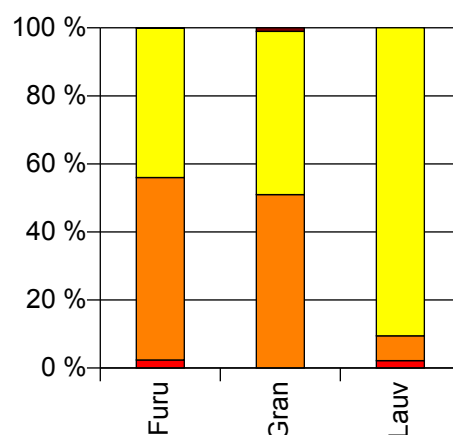
Volum 2009 (kbm)

	Spesial	Sagtømmer	Massevirke	Vrak	Sum:
Furu	339	7 697	6 291	22	14 349
Gran		16 554	15 588	342	32 484
Lauv	35	118	1 465		1 618
Sum:	374	24 369	23 344	364	48 451

Volum (kbm)



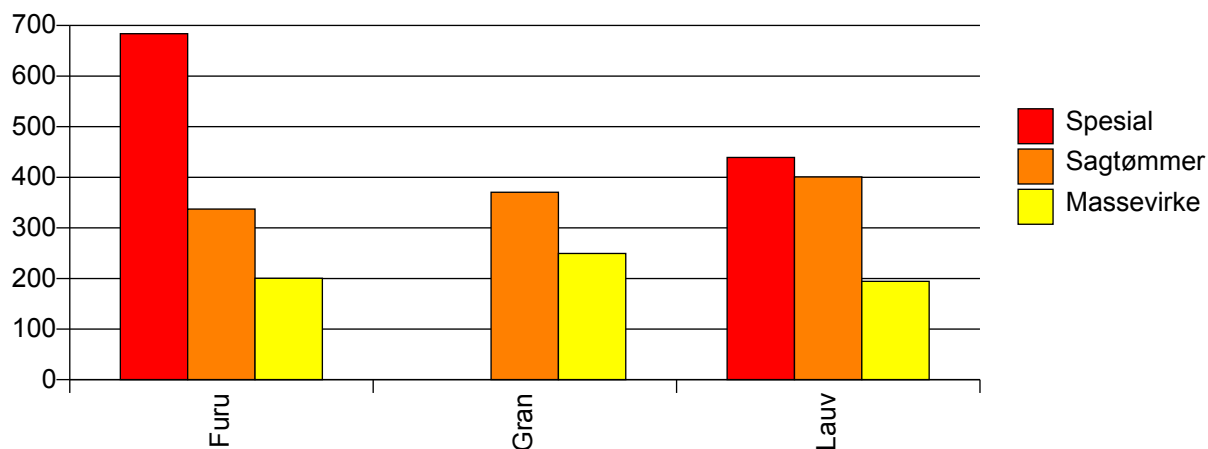
Volum (prosentfordelt)



Gjennomsnittspris 2009 (kr/kbm)

	Spesial	Sagtømmer	Massevirke	Vrak	Snitt
Furu	684	337	200	0	285
Gran		370	249	0	308
Lauv	439	401	194		215
Snitt	661	360	233	0	298

Gjennomsnittspris (kr/kbm)

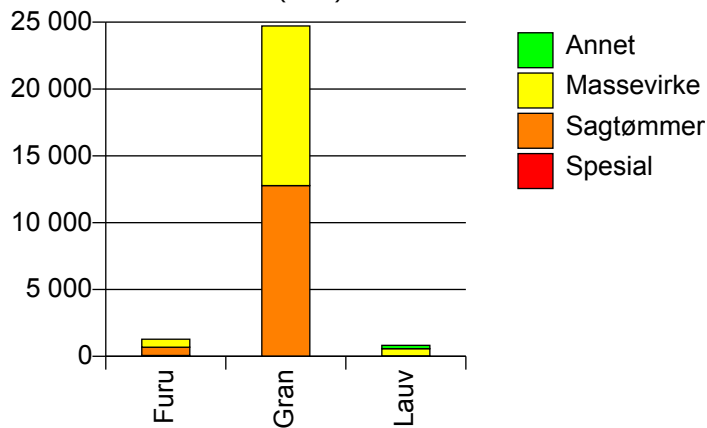


122 TRØGSTAD

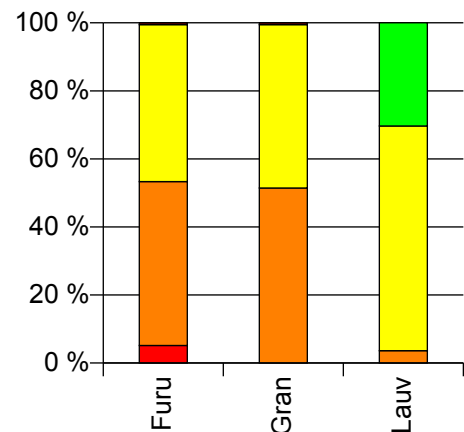
Volum 2009 (kbm)

	Spesial	Sagtømmer	Massevirke	Annet	Vrak	Sum:
Furu	66	619	592		7	1 284
Gran		12 776	11 938		127	24 841
Lauv		30	547	251		828
Sum:	66	13 425	13 077	251	134	26 953

Volum (kbm)



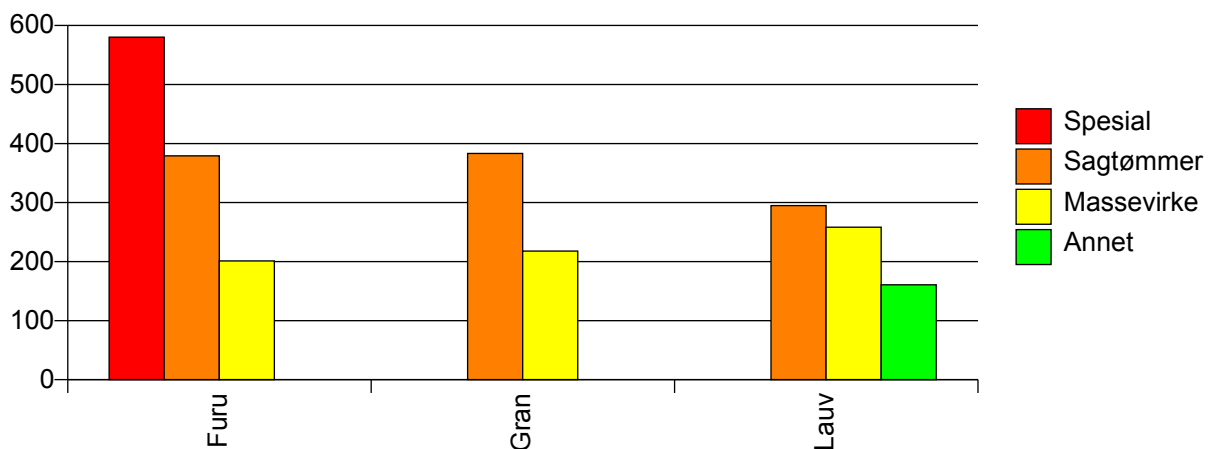
Volum (prosentfordelt)



Gjennomsnittspris 2009 (kr/kbm)

	Spesial	Sagtømmer	Massevirke	Annet	Vrak	Snitt
Furu	580	379	201		0	305
Gran		383	218		0	302
Lauv		295	258	161		230
Snitt	580	383	219	161	0	300

Gjennomsnittspris (kr/kbm)

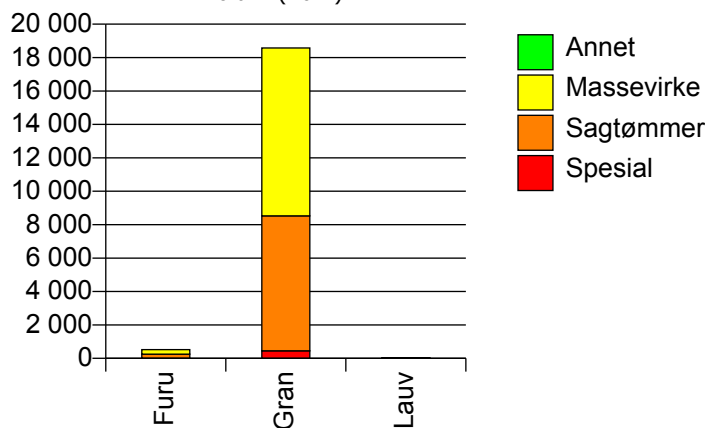


123 SPYDEBERG

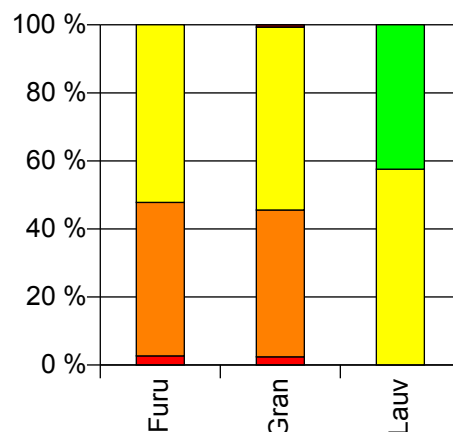
Volum 2009 (kbm)

	Spesial	Sagtømmer	Massevirke	Annet	Vrak	Sum:
Furu	14	237	274		0	525
Gran	448	8 080	10 051		130	18 709
Lauv			19	14		33
Sum:	462	8 317	10 344	14	130	19 267

Volum (kbm)



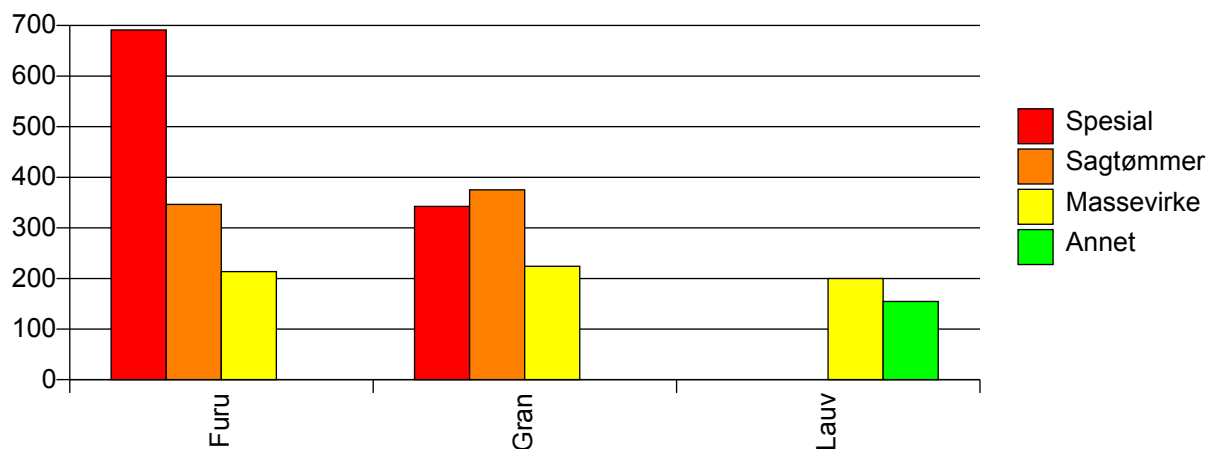
Volum (prosentfordelt)



Gjennomsnittspris 2009 (kr/kbm)

	Spesial	Sagtømmer	Massevirke	Annet	Vrak	Snitt
Furu	691	347	214		#DIV/0	286
Gran	342	375	224		0	291
Lauv			200	155		181
Snitt	353	374	224	155	0	290

Gjennomsnittspris (kr/kbm)

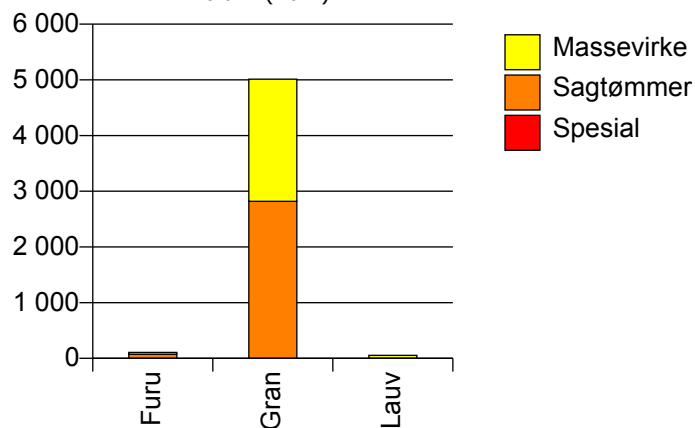


124 ASKIM

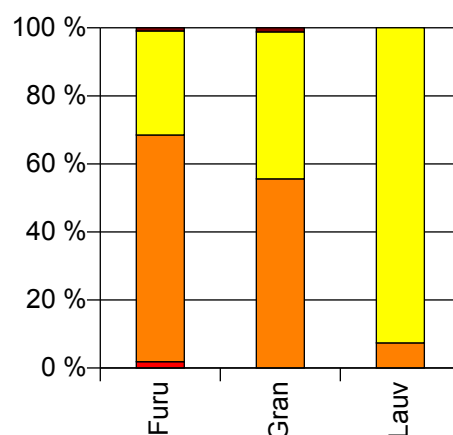
Volum 2009 (kbm)

	Spesial	Sagtømmer	Massevirke	Vrak	Sum:
Furu	2	72	33	1	108
Gran		2 820	2 193	60	5 073
Lauv		4	50		54
Sum:	2	2 896	2 276	61	5 235

Volum (kbm)



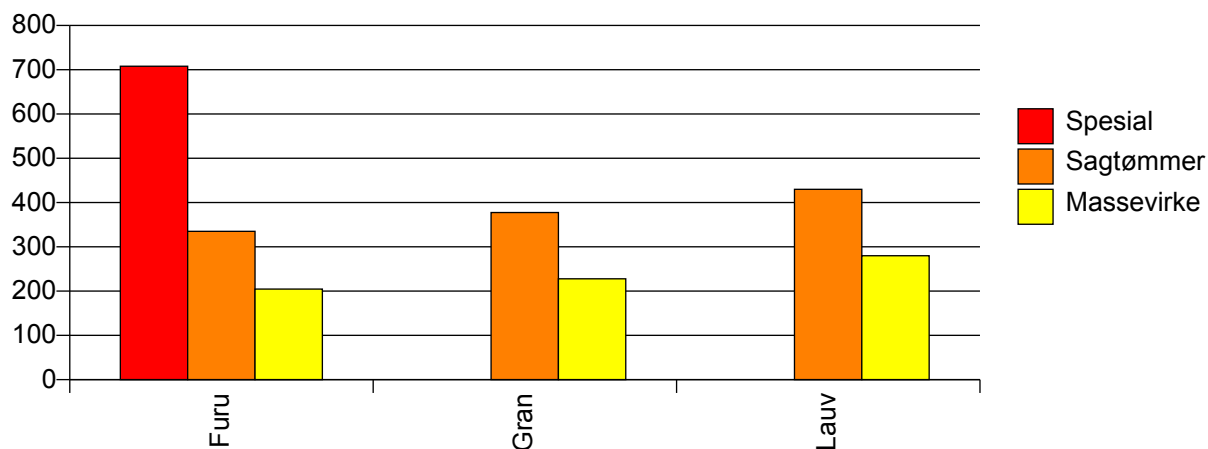
Volum (prosentfordelt)



Gjennomsnittspris 2009 (kr/kbm)

	Spesial	Sagtømmer	Massevirke	Vrak	Snitt
Furu	708	335	205	0	299
Gran		378	228	0	308
Lauv		430	280		291
Snitt	708	377	229	0	308

Gjennomsnittspris (kr/kbm)

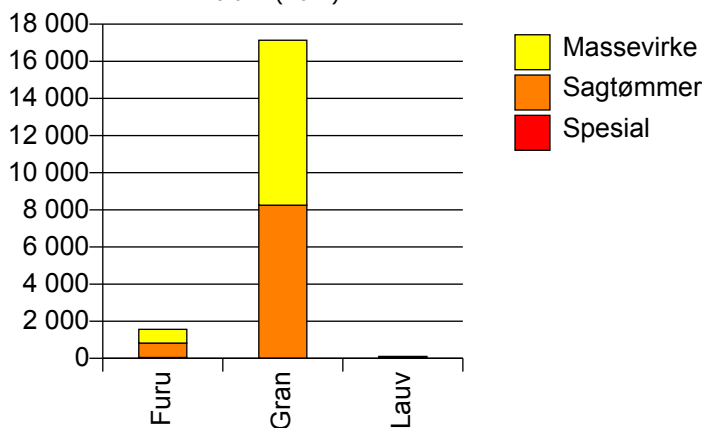


125 EIDSBERG

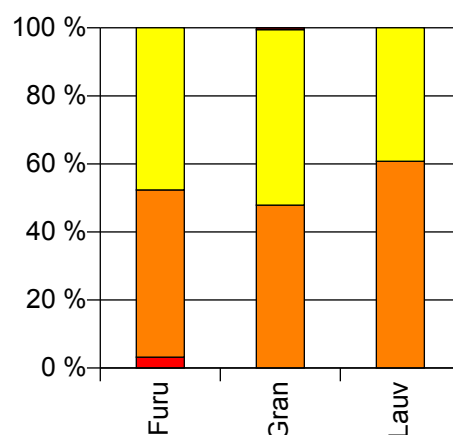
Volum 2009 (kbm)

	Spesial	Sagtømmer	Massevirke	Vrak	Sum:
Furu	50	769	745		1 564
Gran		8 251	8 886	93	17 230
Lauv		62	40		102
Sum:	50	9 082	9 671	93	18 896

Volum (kbm)



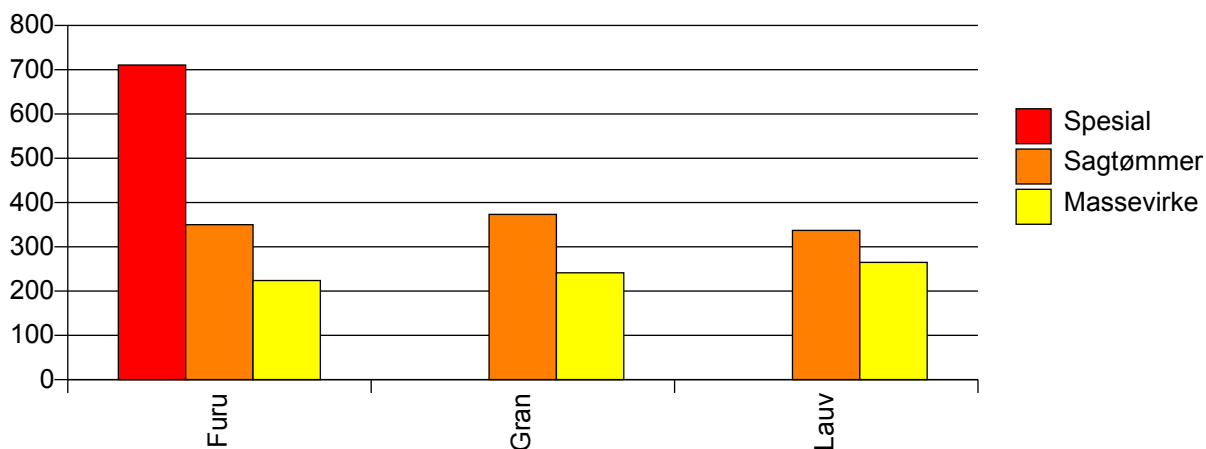
Volum (prosentfordelt)



Gjennomsnittspris 2009 (kr/kbm)

	Spesial	Sagtømmer	Massevirke	Vrak	Snitt
Furu	711	350	224		302
Gran		373	241	0	303
Lauv		337	265		309
Snitt	711	371	240	0	303

Gjennomsnittspris (kr/kbm)

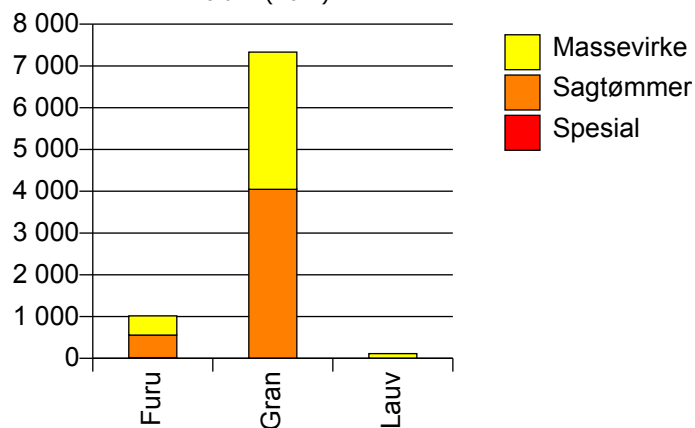


127 SKIPTVET

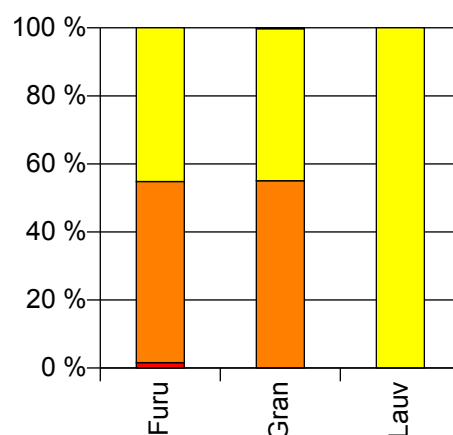
Volum 2009 (kbm)

	Spesial	Sagtømmer	Massevirke	Vrak	Sum:
Furu	16	541	459	0	1 016
Gran		4 047	3 284	20	7 351
Lauv			112		112
Sum:	16	4 588	3 855	20	8 479

Volum (kbm)



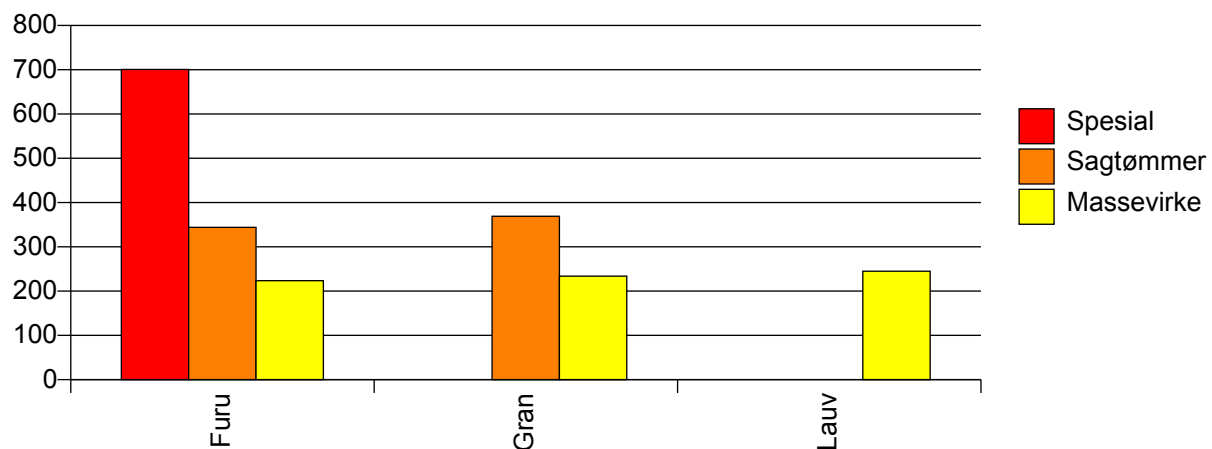
Volum (prosentfordelt)



Gjennomsnittspris 2009 (kr/kbm)

	Spesial	Sagtømmer	Massevirke	Vrak	Snitt
Furu	701	344	224	#DIV/0	295
Gran		369	234	0	308
Lauv			245		245
Snitt	701	366	233	0	305

Gjennomsnittspris (kr/kbm)

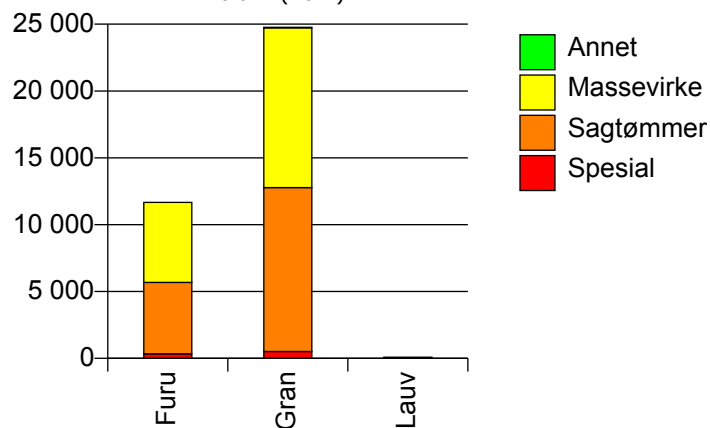


128 RAKKESTAD

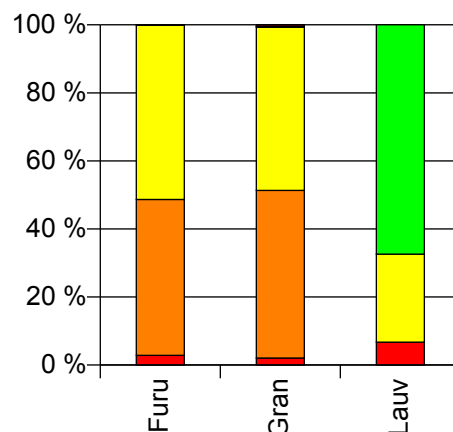
Volum 2009 (kbm)

	Spesial	Sagtømmer	Massevirke	Annet	Vrak	Sum:
Furu	334	5 349	5 986		7	11 676
Gran	516	12 263	11 950	37	125	24 891
Lauv	6		23	60		89
Sum:	856	17 612	17 959	97	132	36 656

Volum (kbm)



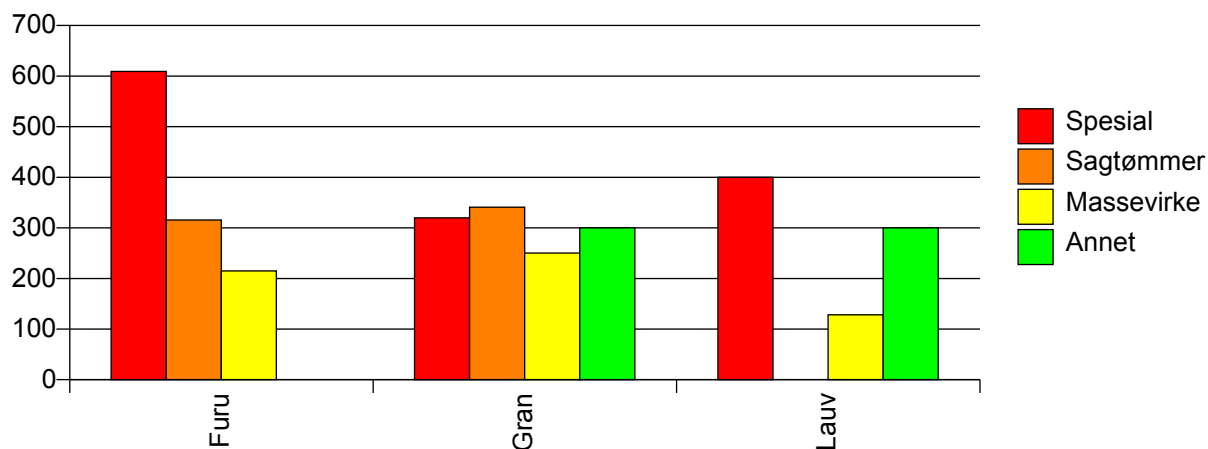
Volum (prosentfordelt)



Gjennomsnittspris 2009 (kr/kbm)

	Spesial	Sagtømmer	Massevirke	Annet	Vrak	Snitt
Furu	609	316	215		0	272
Gran	320	341	250	300	0	295
Lauv	400		128	300		262
Snitt	433	333	238	300	0	288

Gjennomsnittspris (kr/kbm)

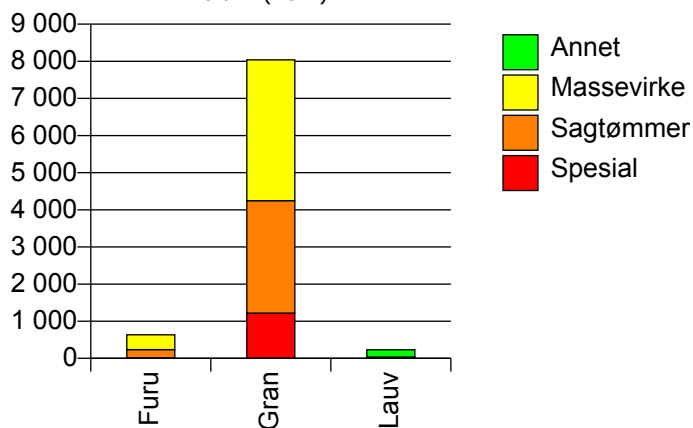


135 RÅDE

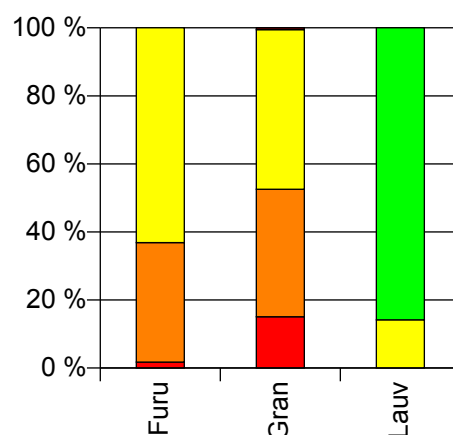
Volum 2009 (kbm)

	Spesial	Sagtømmer	Massevirke	Annet	Vrak	Sum:
Furu	11	223	401		0	635
Gran	1 219	3 028	3 794		44	8 085
Lauv			33	200		233
Sum:	1 230	3 251	4 228	200	44	8 953

Volum (kbm)



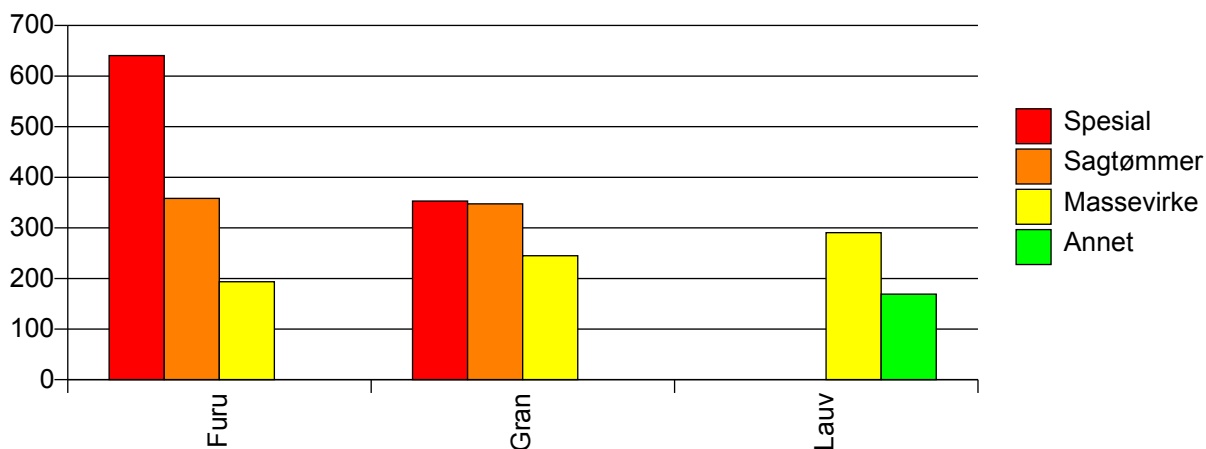
Volum (prosentfordelt)



Gjennomsnittspris 2009 (kr/kbm)

	Spesial	Sagtømmer	Massevirke	Annet	Vrak	Snitt
Furu	640	358	193		#DIV/0	259
Gran	353	347	245		0	298
Lauv			291	169		186
Snitt	356	348	240	169	0	293

Gjennomsnittspris (kr/kbm)

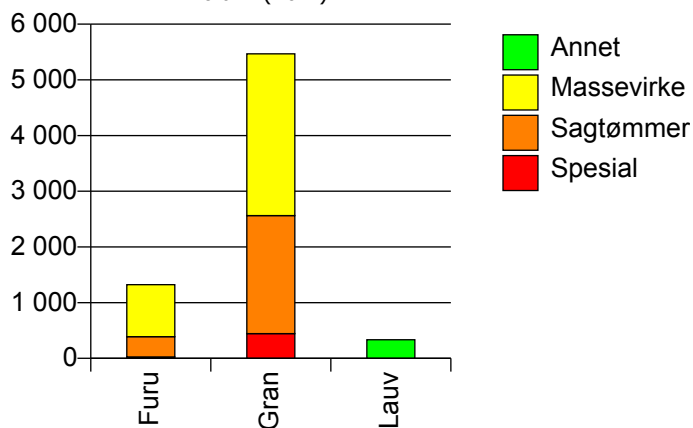


136 RYGGE

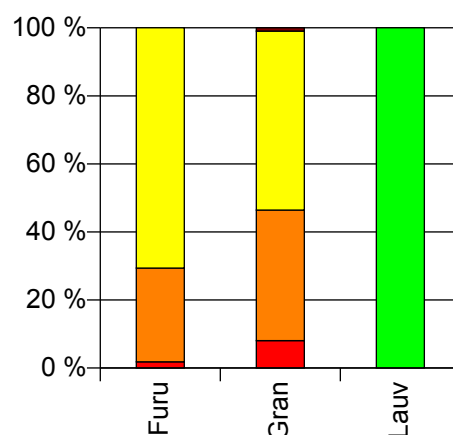
Volum 2009 (kbm)

	Spesial	Sagtømmer	Massevirke	Annet	Vrak	Sum:
Furu	24	365	935		0	1 324
Gran	445	2 118	2 904		54	5 521
Lauv				335		335
Sum:	469	2 483	3 839	335	54	7 180

Volum (kbm)



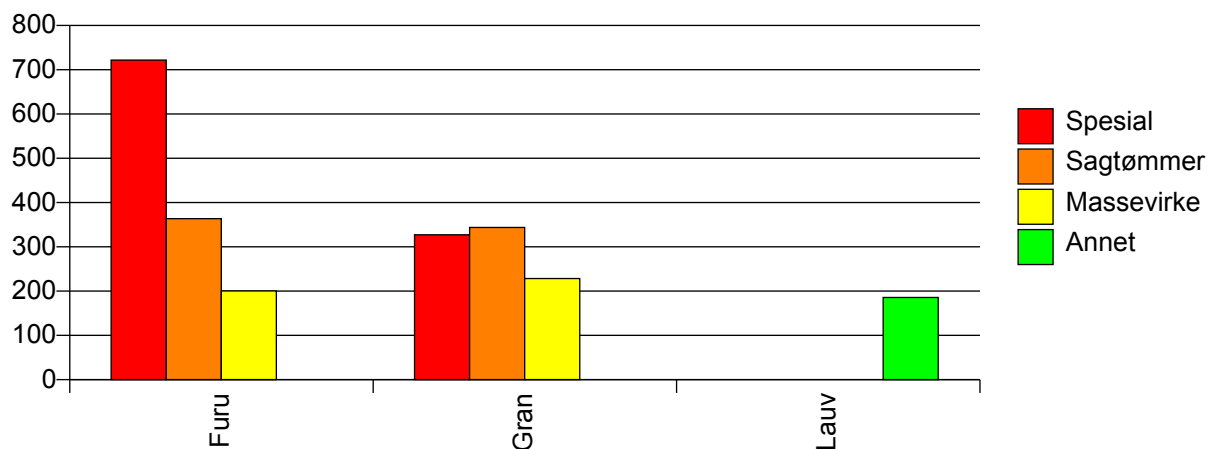
Volum (prosentfordelt)



Gjennomsnittspris 2009 (kr/kbm)

	Spesial	Sagtømmer	Massevirke	Annet	Vrak	Snitt
Furu	722	364	200		#DIV/0	255
Gran	327	344	228		0	278
Lauv				186		186
Snitt	347	347	222	186	0	270

Gjennomsnittspris (kr/kbm)

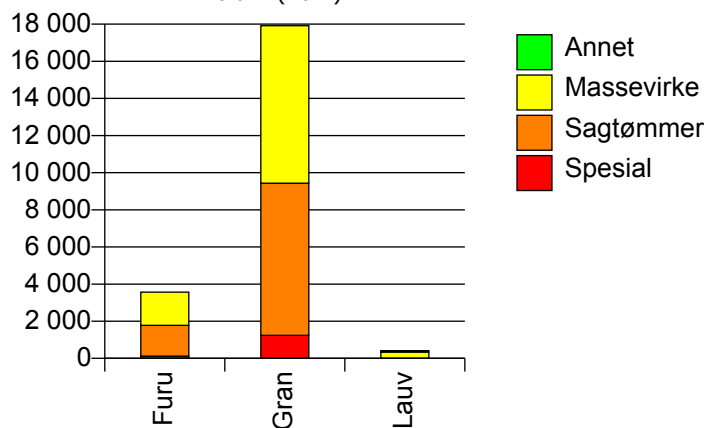


137 VÅLER I ØSTFOLD

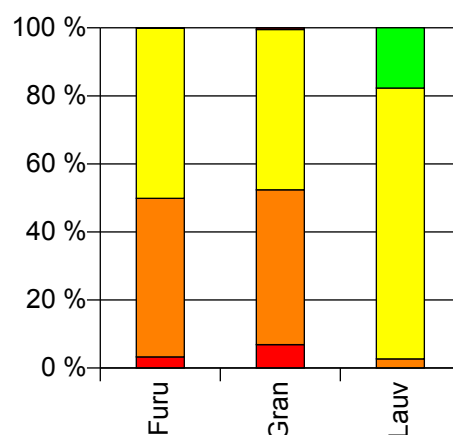
Volum 2009 (kbm)

	Spesial	Sagtømmer	Massevirke	Annet	Vrak	Sum:
Furu	117	1 663	1 786		1	3 567
Gran	1 238	8 198	8 480		91	18 007
Lauv		11	328	73		412
Sum:	1 355	9 872	10 594	73	92	21 986

Volum (kbm)



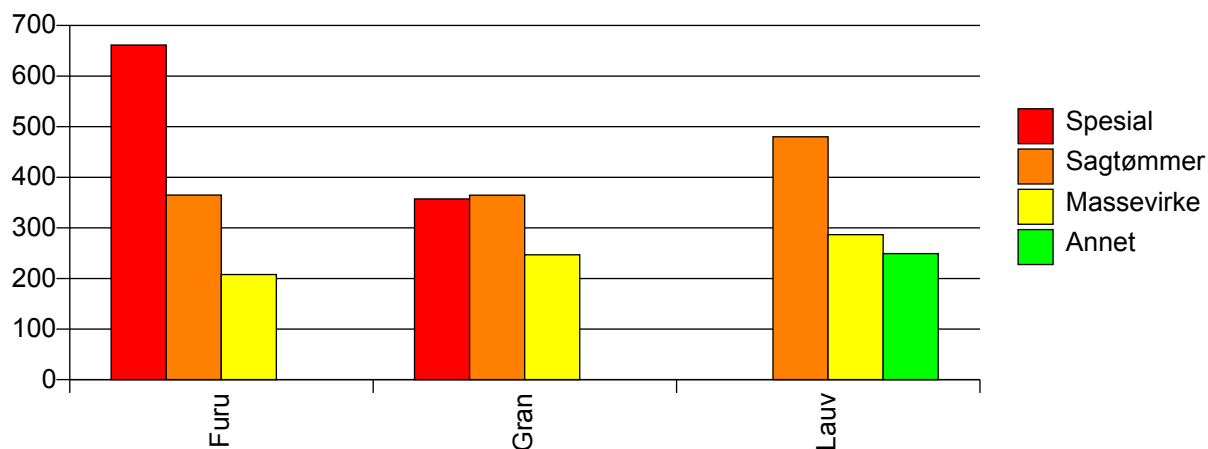
Volum (prosentfordelt)



Gjennomsnittspris 2009 (kr/kbm)

	Spesial	Sagtømmer	Massevirke	Annet	Vrak	Snitt
Furu	661	365	208		0	296
Gran	357	365	247		0	307
Lauv		480	287	249		285
Snitt	384	365	242	249	0	305

Gjennomsnittspris (kr/kbm)

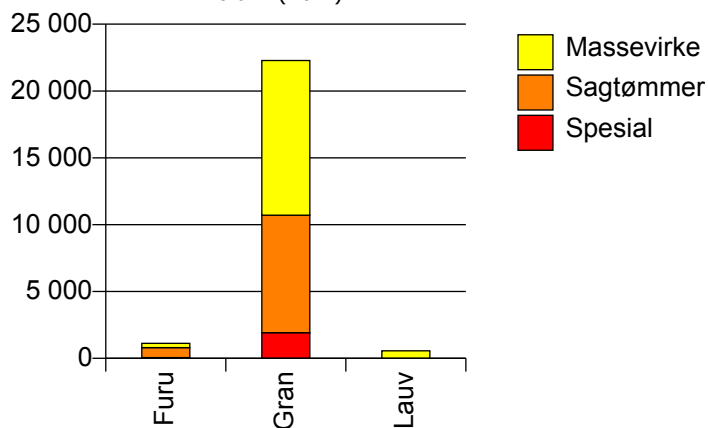


138 HOBØL

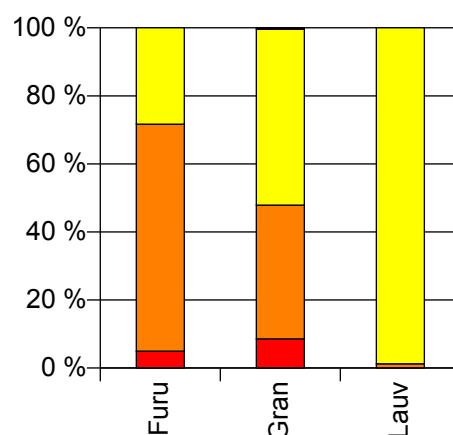
Volum 2009 (kbm)

	Spesial	Sagtømmer	Massevirke	Vrak	Sum:
Furu	56	752	319	0	1 127
Gran	1 918	8 791	11 571	91	22 371
Lauv		7	560		567
Sum:	1 974	9 550	12 450	91	24 065

Volum (kbm)



Volum (prosentfordelt)



Gjennomsnittspris 2009 (kr/kbm)

	Spesial	Sagtømmer	Massevirke	Vrak	Snitt
Furu	676	400	204	#DIV/0	358
Gran	353	380	227	0	297
Lauv		557	216		220
Snitt	362	382	226	0	298

Gjennomsnittspris (kr/kbm)

