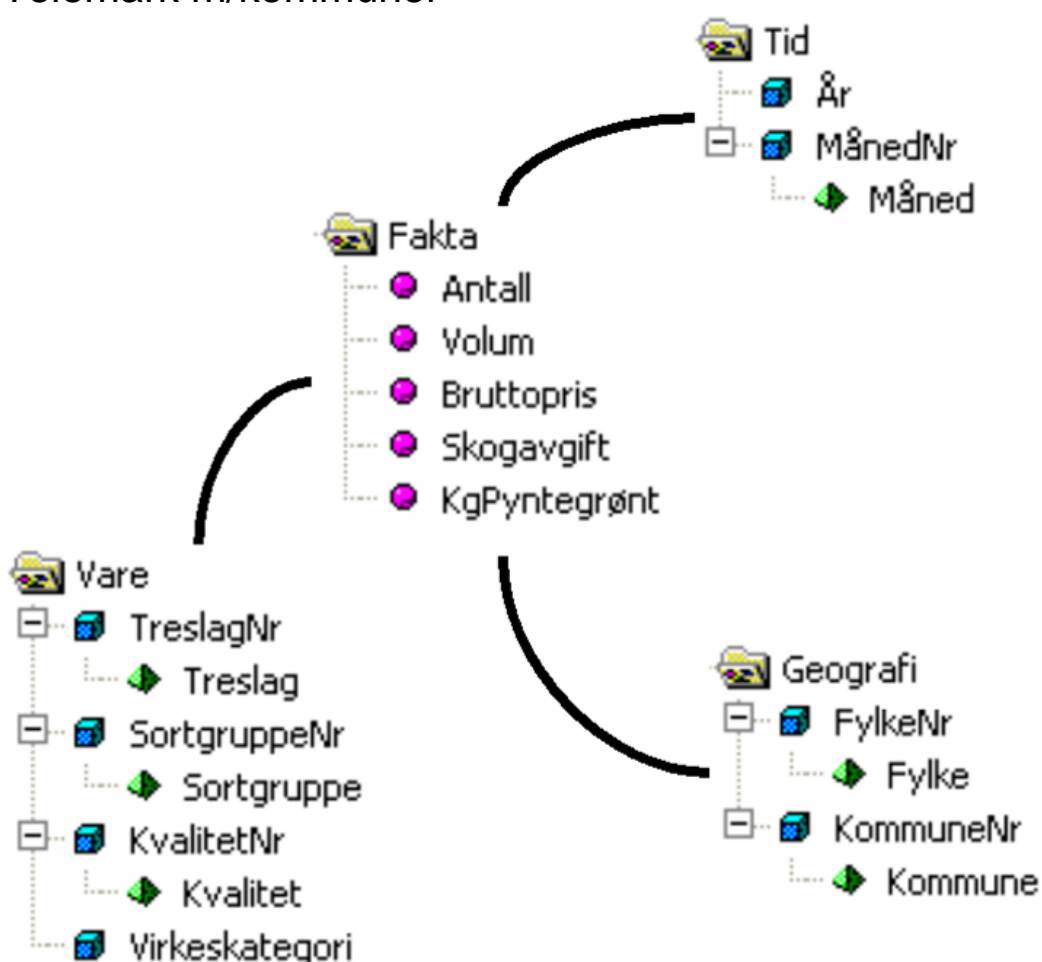


Virkestatistikk fra SKOG-DATA AS

Telemark m/kommuner



Dataene i rapporten er hentet fra databasen som inneholder virkesdata med tilhørende innbetalinger av skogavgift. Rapporten er laget med Business Objects, som er sluttbrukerverktøyet i Skog-Data sine nye datavarehus-løsninger. Business Objects er ett meget sterkt rapportverktøy som kan presentere store mengder data effektivt.

Rapportene kan lastes ned fra www.skogdata.no/statistikk

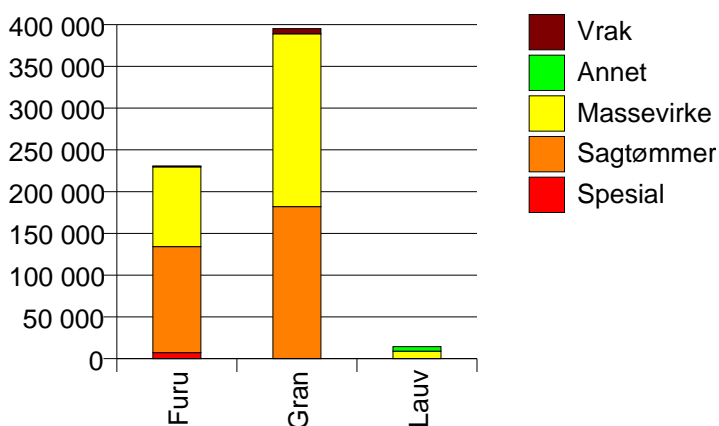
For mer informasjon, kontakt: tabh@skogdata.no

Telemark

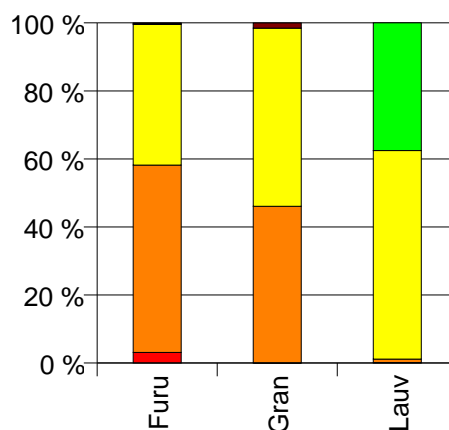
Volum 2008

	Spesial	Sagtømmer	Massevirke	Annet	Vrak	Sum:
Furu	7 203	126 990	95 476	487	508	230 664
Gran	234	181 851	206 819		6 194	395 098
Lauv	22	146	8 891	5 447		14 506
Sum:	7 459	308 987	311 186	5 934	6 702	640 268

Volum (kbm)



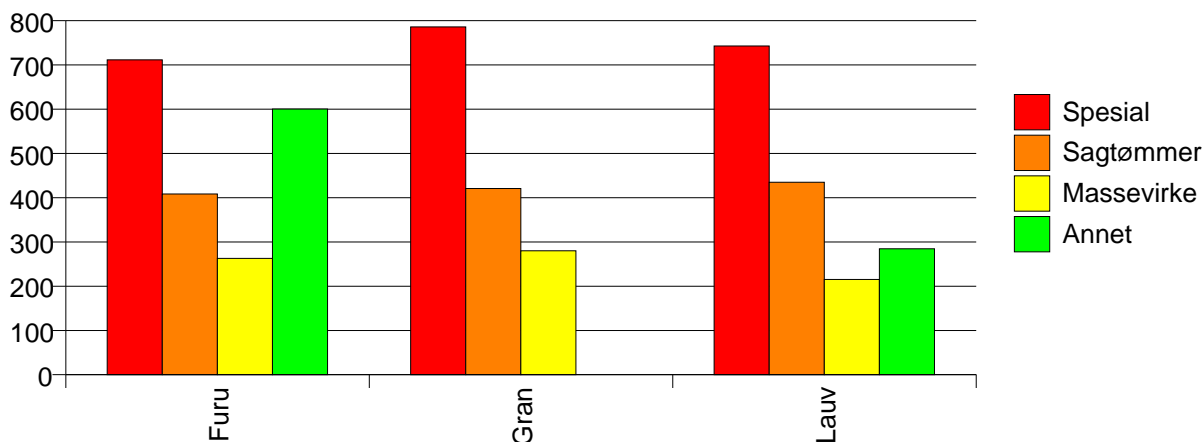
Volum (prosentfordelt)



Gjennomsnittspris 2008 (kr/kbm)

	Spesial	Sagtømmer	Massevirke	Annet	Vrak	Snitt:
Furu	711	408	263	600	0	357
Gran	786	421	280		0	341
Lauv	743	435	215	284		244
Snitt:	714	416	273	310	0	344

Gjennomsnittspris (kr/kbm)

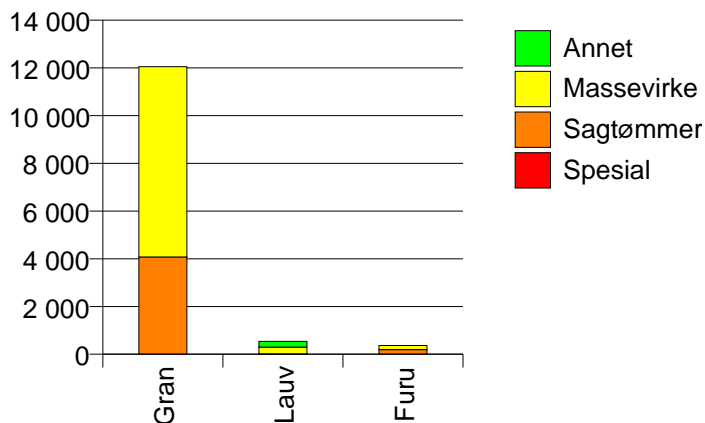


805 PORSGRUNN

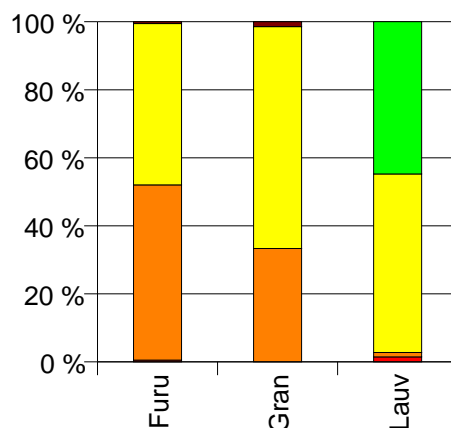
Volum 2008 (kbm)

	Spesial	Sagtømmer	Massevirke	Annet	Vrak	Sum:
Furu	2	189	174		2	367
Gran		4 075	7 973		177	12 225
Lauv	8	7	284	242		541
Sum:	10	4 271	8 431	242	179	13 133

Volum (kbm)



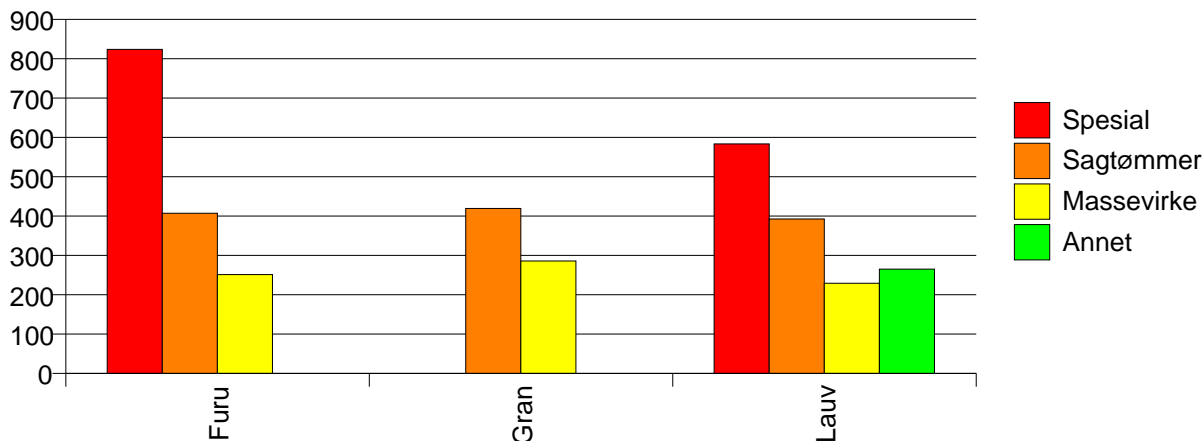
Volum (prosentfordelt)



Gjennomsnittspris 2008 (kr/kbm)

	Spesial	Sagtømmer	Massevirke	Annet	Vrak	Snitt
Furu	824	407	251		0	333
Gran		419	286		0	326
Lauv	583	393	229	265		253
Snitt	631	419	283	265	0	323

Gjennomsnittspris (kr/kbm)

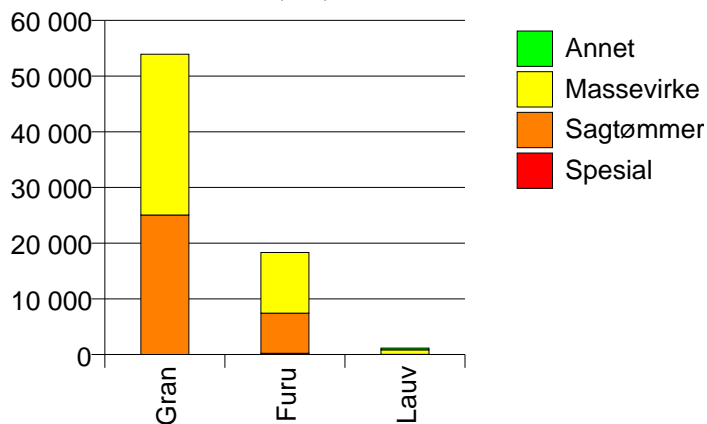


806 SKIEN

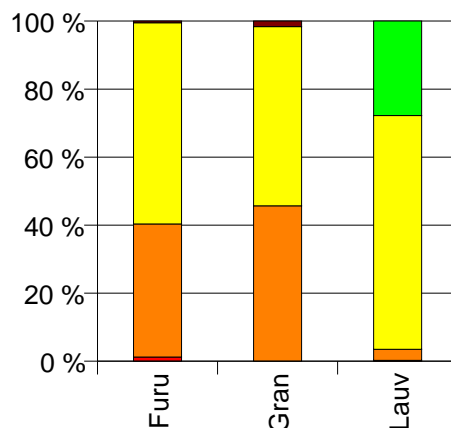
Volum 2008 (kbm)

	Spesial	Sagtømmer	Massevirke	Annet	Vrak	Sum:
Furu	228	7 202	10 897		90	18 417
Gran		25 049	28 879		890	54 818
Lauv	3	38	806	326		1 173
Sum:	231	32 289	40 582	326	980	74 408

Volum (kbm)



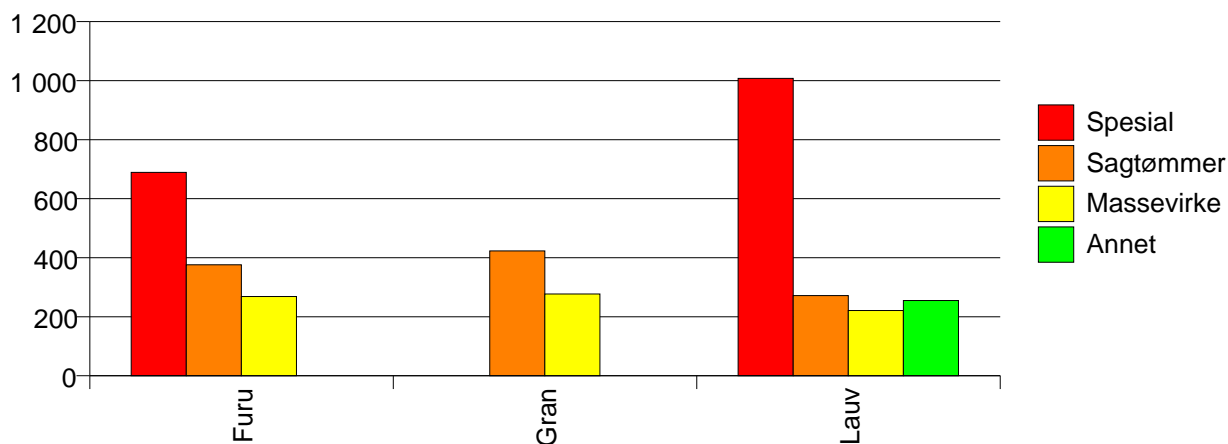
Volum (prosentfordelt)



Gjennomsnittspris 2008 (kr/kbm)

	Spesial	Sagtømmer	Massevirke	Annet	Vrak	Snitt
Furu	689	376	269		0	315
Gran		423	277		0	340
Lauv	1 008	272	221	255		234
Snitt	693	413	274	255	0	332

Gjennomsnittspris (kr/kbm)

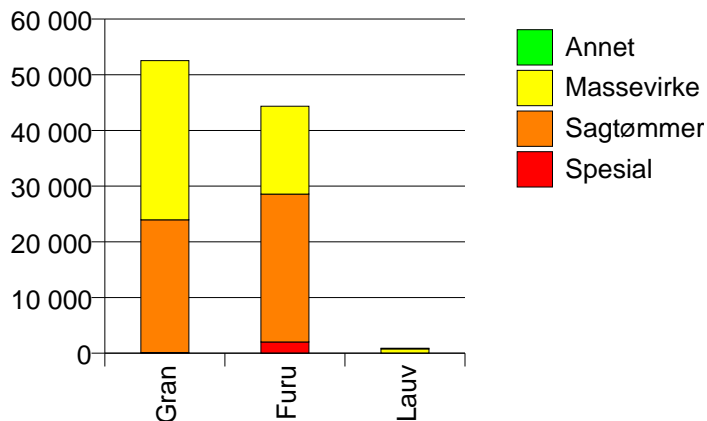


807 NOTODDEN

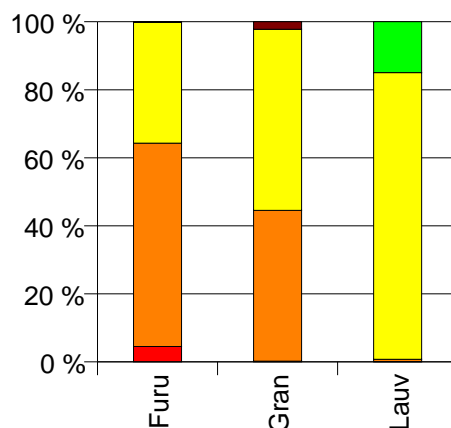
Volum 2008 (kbm)

	Spesial	Sagtømmer	Massevirke	Annet	Vrak	Sum:
Furu	2 012	26 558	15 780		76	44 426
Gran	121	23 836	28 596		1 198	53 751
Lauv	1	6	766	136		909
Sum:	2 134	50 400	45 142	136	1 274	99 086

Volum (kbm)



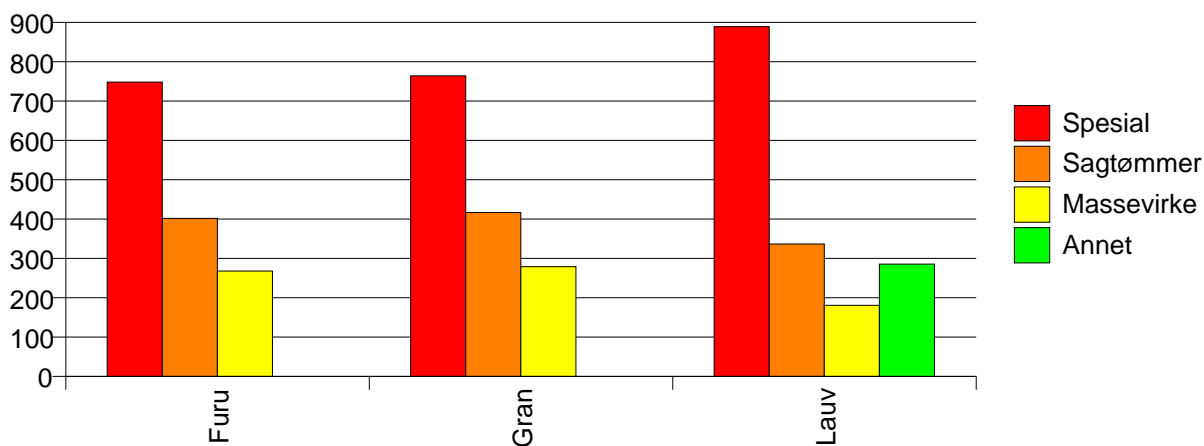
Volum (prosentfordelt)



Gjennomsnittspris 2008 (kr/kbm)

	Spesial	Sagtømmer	Massevirke	Annet	Vrak	Snitt
Furu	748	402	268		0	369
Gran	764	417	279		0	335
Lauv	889	337	181	285		198
Snitt	749	409	273	285	0	349

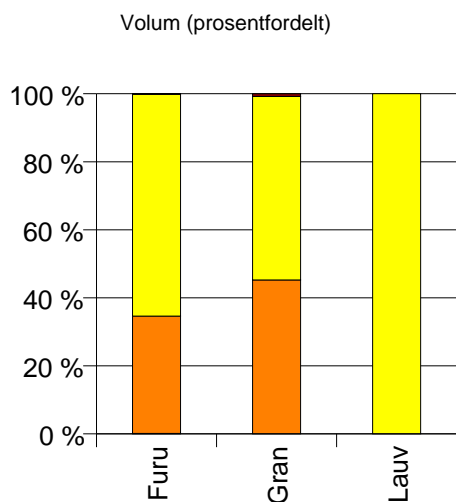
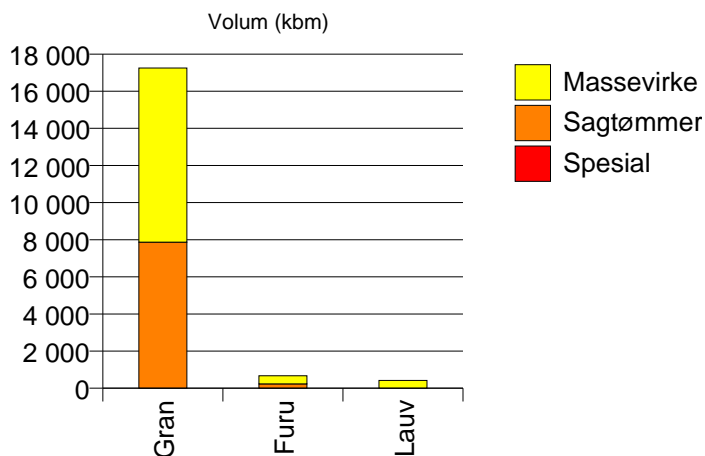
Gjennomsnittspris (kr/kbm)



811 SILJAN

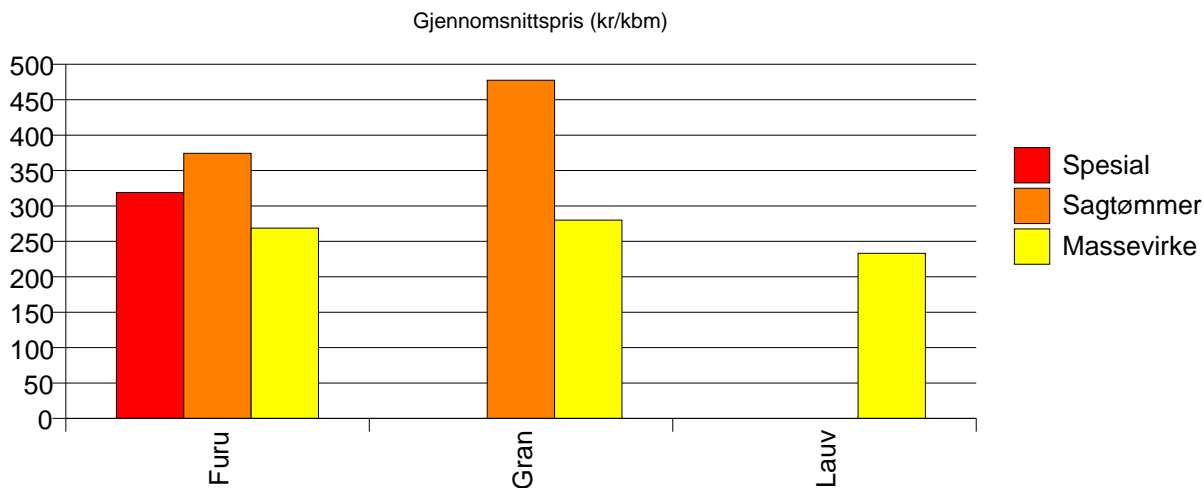
Volum 2008 (kbm)

	Spesial	Sagtømmer	Massevirke	Vrak	Sum:
Furu	1	231	437	1	670
Gran		7 868	9 379	143	17 390
Lauv			418		418
Sum:	1	8 099	10 234	144	18 478



Gjennomsnittspris 2008 (kr/kbm)

	Spesial	Sagtømmer	Massevirke	Vrak	Snitt
Furu	319	374	269	0	305
Gran		477	280	0	367
Lauv			233		233
Snitt	319	475	278	0	362

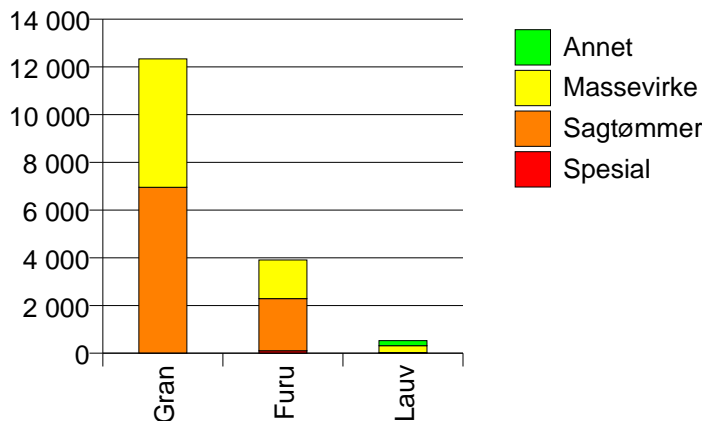


814 BAMBLE

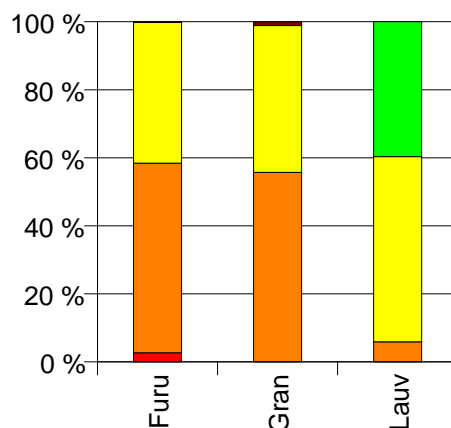
Volum 2008 (kbm)

	Spesial	Sagtømmer	Massevirke	Annet	Vrak	Sum:
Furu	105	2 182	1 620		8	3 915
Gran	1	6 951	5 380		140	12 472
Lauv		31	287	209		527
Sum:	106	9 164	7 287	209	148	16 914

Volum (kbm)



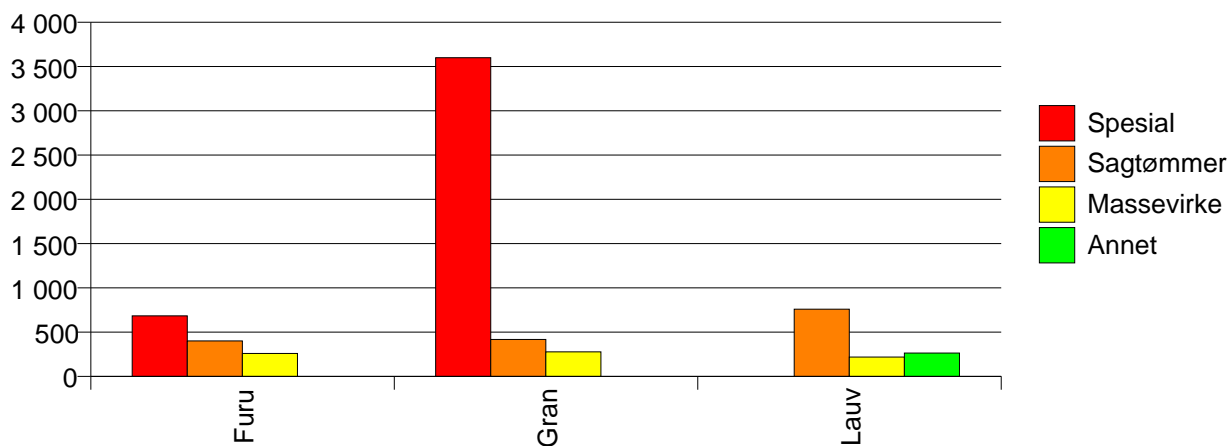
Volum (prosentfordelt)



Gjennomsnittspris 2008 (kr/kbm)

	Spesial	Sagtømmer	Massevirke	Annet	Vrak	Snitt
Furu	684	401	260		0	349
Gran	3 600	418	278		0	353
Lauv		760	218	264		268
Snitt	711	415	272	264	0	350

Gjennomsnittspris (kr/kbm)

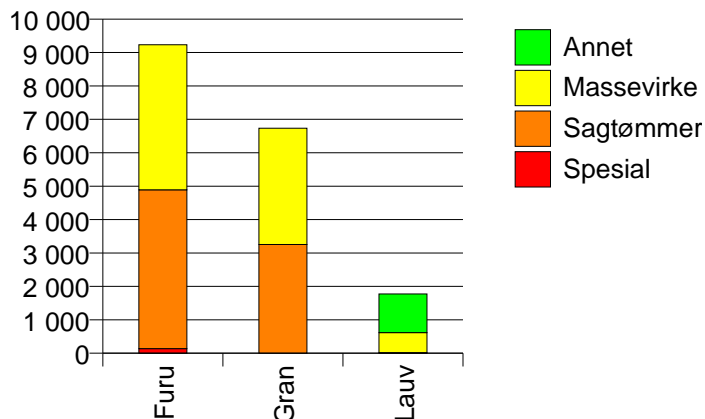


815 KRAGERØ

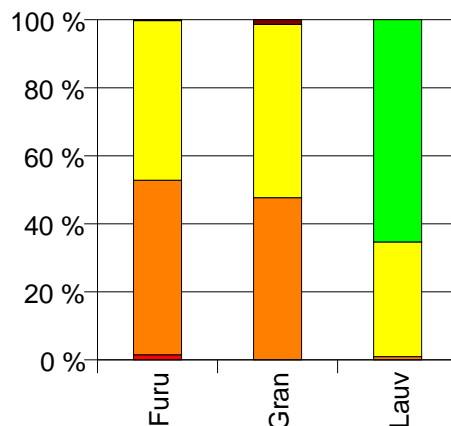
Volum 2008 (kbm)

	Spesial	Sagtømmer	Massevirke	Annet	Vrak	Sum:
Furu	139	4 750	4 344		22	9 255
Gran		3 255	3 477		92	6 824
Lauv		17	598	1 159		1 774
Sum:	139	8 022	8 419	1 159	114	17 853

Volum (kbm)



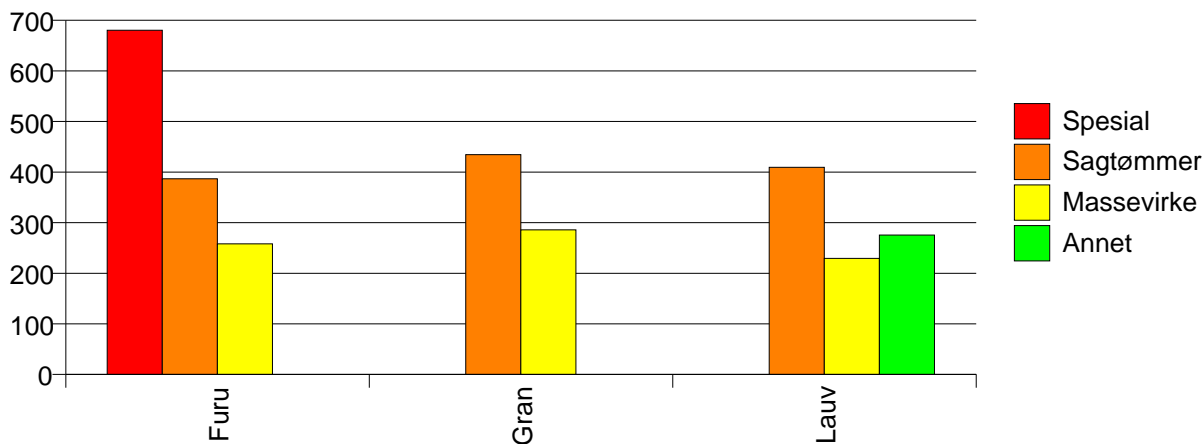
Volum (prosentfordelt)



Gjennomsnittspris 2008 (kr/kbm)

	Spesial	Sagtømmer	Massevirke	Annet	Vrak	Snitt
Furu	680	387	258		0	330
Gran		434	286		0	353
Lauv		410	229	276		261
Snitt	680	406	268	276	0	332

Gjennomsnittspris (kr/kbm)

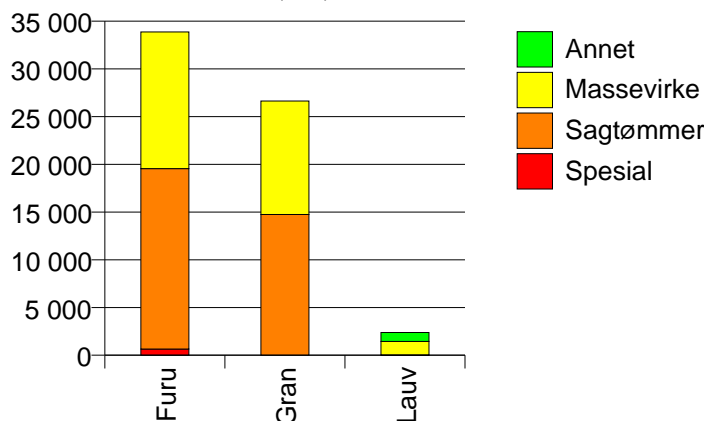


817 DRANGEDAL

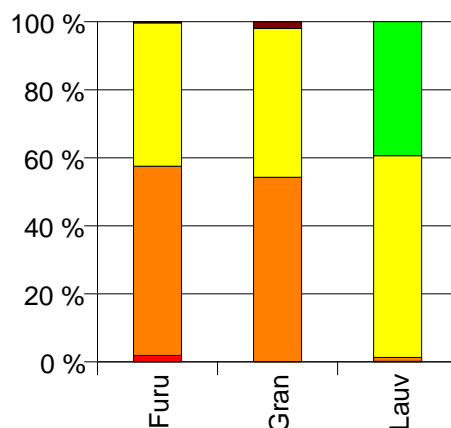
Volum 2008 (kbm)

	Spesial	Sagtømmer	Massevirke	Annet	Vrak	Sum:
Furu	645	18 900	14 312		114	33 971
Gran		14 738	11 884		537	27 159
Lauv	4	27	1 411	937		2 379
Sum:	649	33 665	27 607	937	651	63 509

Volum (kbm)



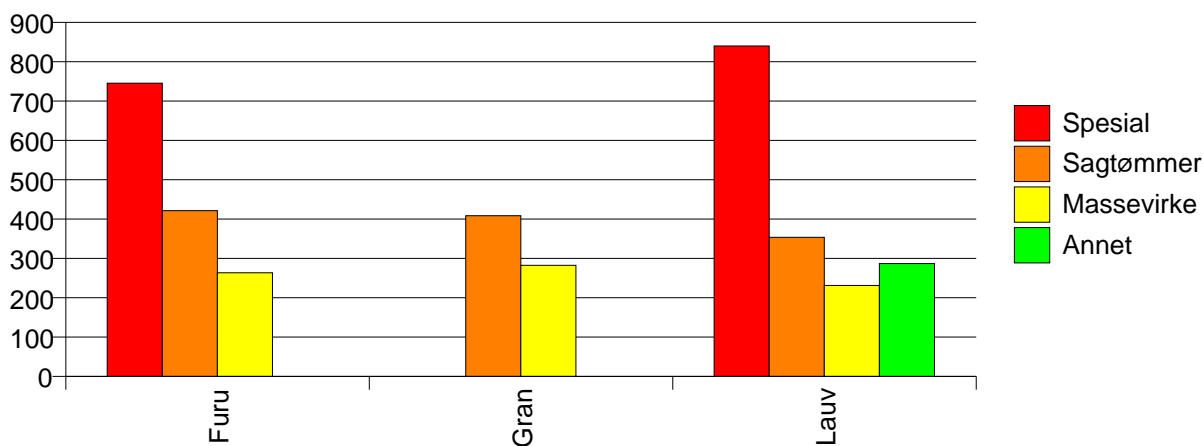
Volum (prosentfordelt)



Gjennomsnittspris 2008 (kr/kbm)

	Spesial	Sagtømmer	Massevirke	Annet	Vrak	Snitt
Furu	745	421	263		0	360
Gran		408	282		0	345
Lauv	840	353	231	287		255
Snitt	746	416	270	287	0	350

Gjennomsnittspris (kr/kbm)

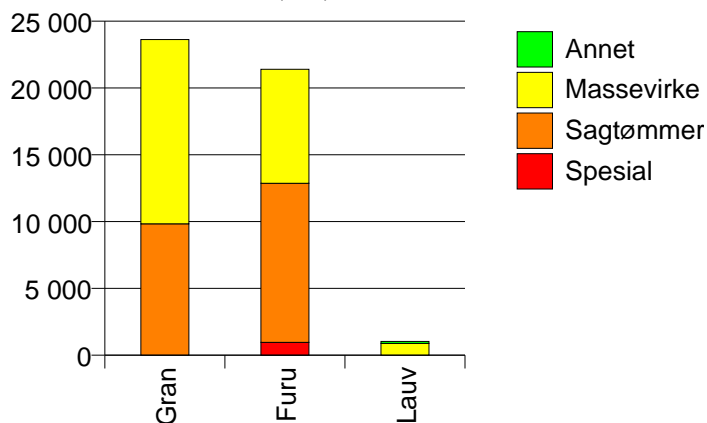


819 NOME

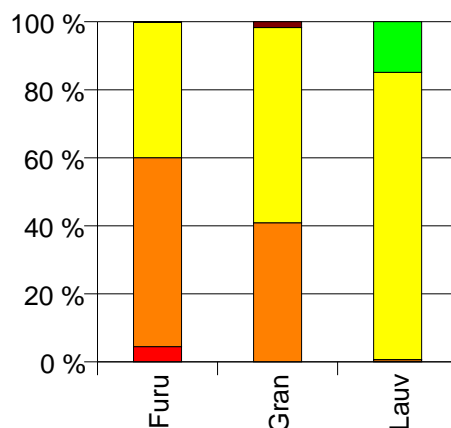
Volum 2008 (kbm)

	Spesial	Sagtømmer	Massevirke	Annet	Vrak	Sum:
Furu	958	11 904	8 530		34	21 426
Gran		9 829	13 794		407	24 030
Lauv	2	5	873	154		1 034
Sum:	960	21 738	23 197	154	441	46 490

Volum (kbm)



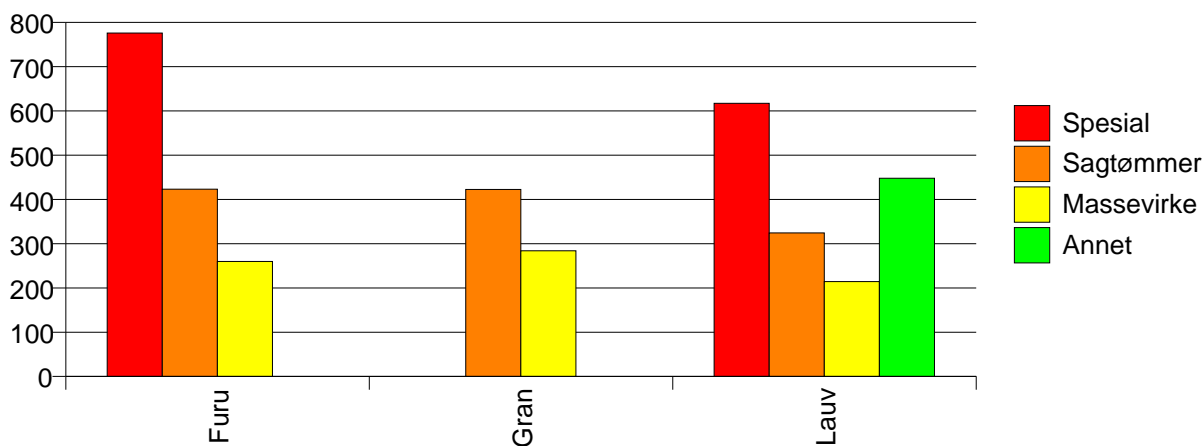
Volum (prosentfordelt)



Gjennomsnittspris 2008 (kr/kbm)

	Spesial	Sagtømmer	Massevirke	Annet	Vrak	Snitt
Furu	776	423	260		0	373
Gran		423	284		0	336
Lauv	617	324	214	448		250
Snitt	775	423	272	448	0	351

Gjennomsnittspris (kr/kbm)

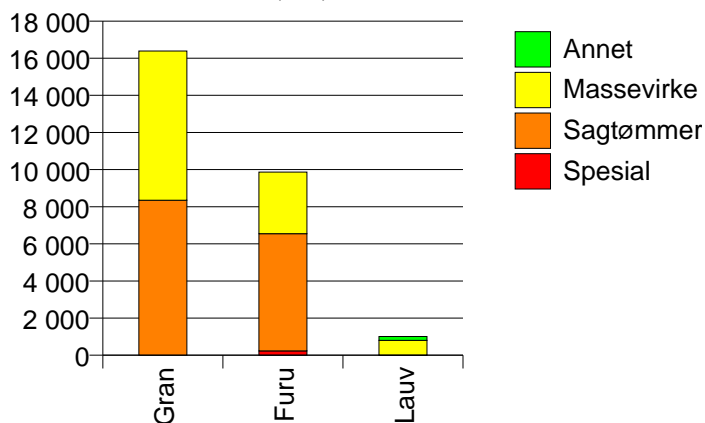


821 BØ

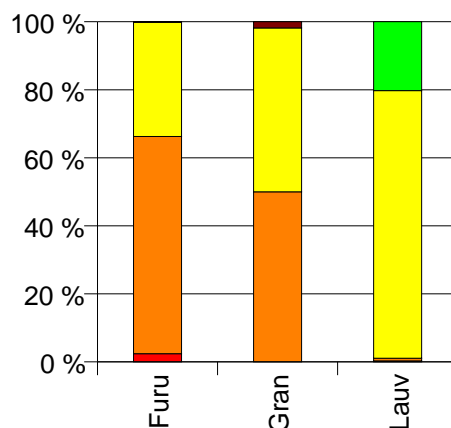
Volum 2008 (kbm)

	Spesial	Sagtømmer	Massevirke	Annet	Vrak	Sum:
Furu	237	6 311	3 317		15	9 880
Gran	5	8 344	8 039		305	16 693
Lauv	3	8	793	204		1 008
Sum:	245	14 663	12 149	204	320	27 581

Volum (kbm)



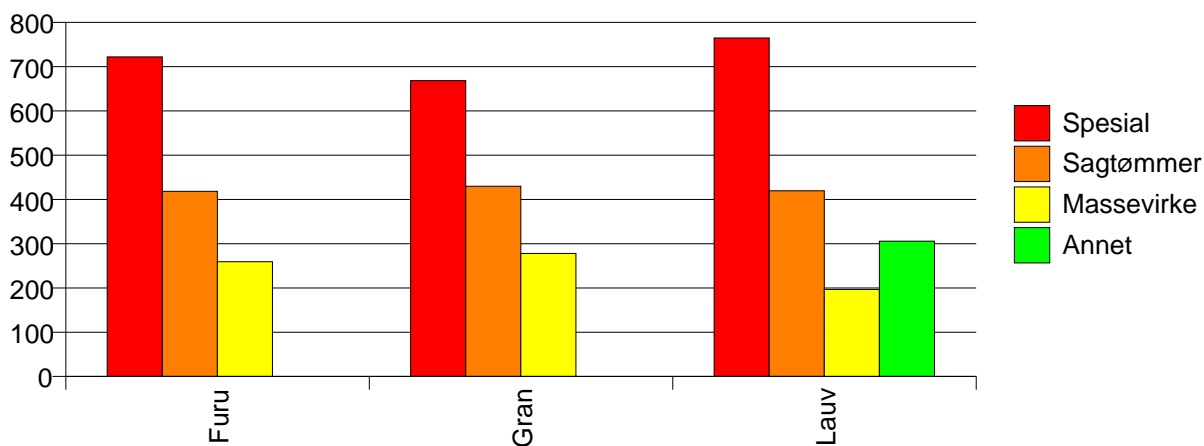
Volum (prosentfordelt)



Gjennomsnittspris 2008 (kr/kbm)

	Spesial	Sagtømmer	Massevirke	Annet	Vrak	Snitt
Furu	722	418	259		0	371
Gran	668	430	278		0	349
Lauv	765	419	197	306		222
Snitt	721	425	267	306	0	352

Gjennomsnittspris (kr/kbm)

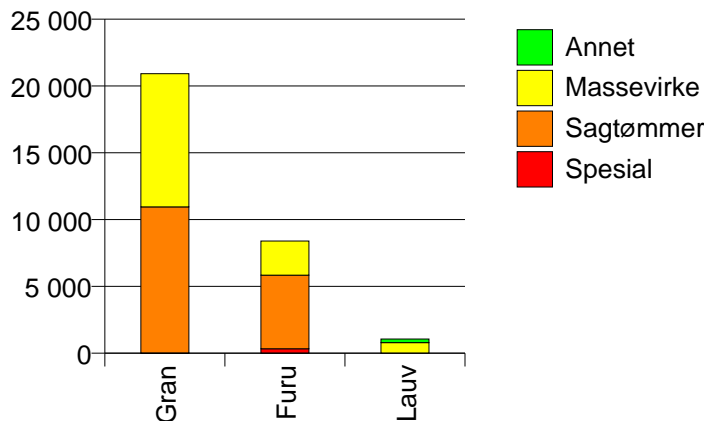


822 SAUHERAD

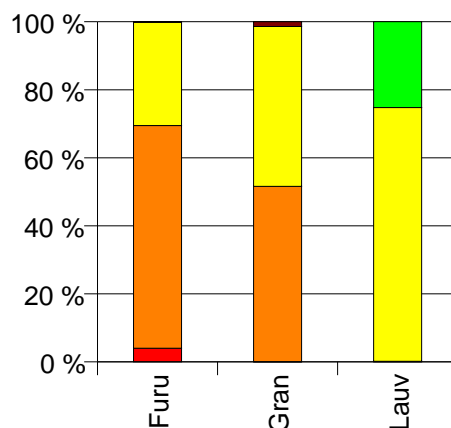
Volum 2008 (kbm)

	Spesial	Sagtømmer	Massevirke	Annet	Vrak	Sum:
Furu	338	5 503	2 554		11	8 406
Gran	13	10 931	9 973		294	21 211
Lauv	1	1	789	267		1 058
Sum:	352	16 435	13 316	267	305	30 675

Volum (kbm)



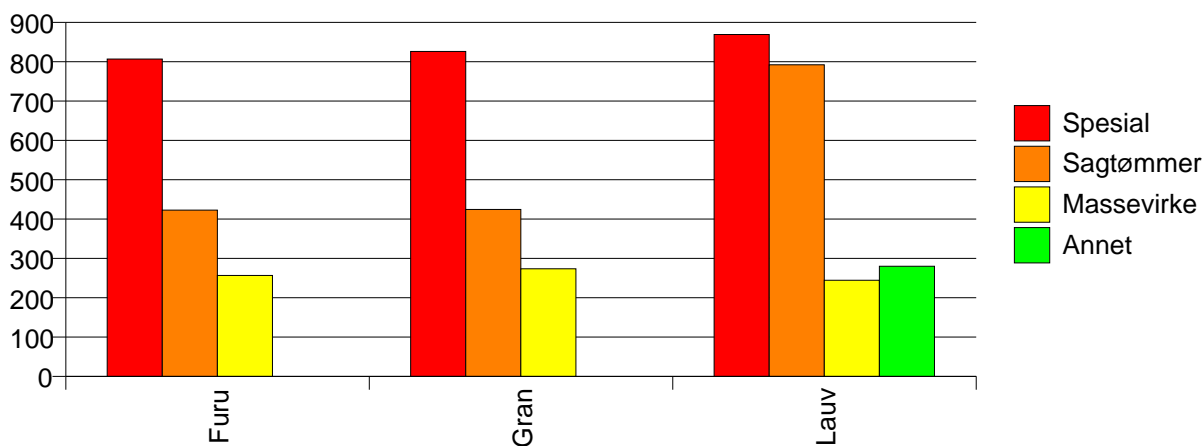
Volum (prosentfordelt)



Gjennomsnittspris 2008 (kr/kbm)

	Spesial	Sagtømmer	Massevirke	Annet	Vrak	Snitt
Furu	807	423	257		0	387
Gran	826	424	274		0	348
Lauv	869	792	244	280		254
Snitt	808	424	269	280	0	355

Gjennomsnittspris (kr/kbm)

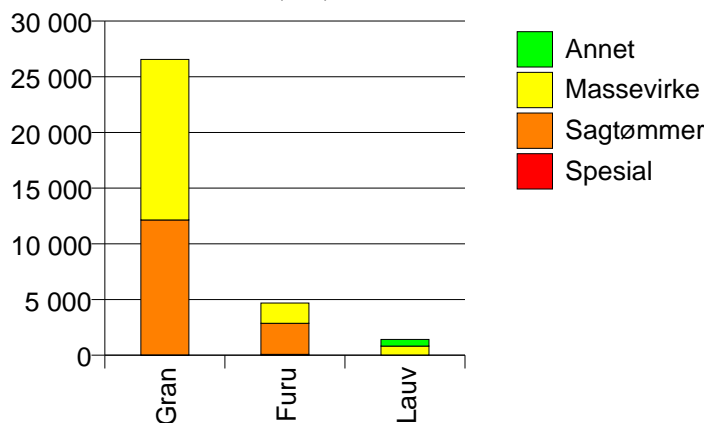


826 TINN

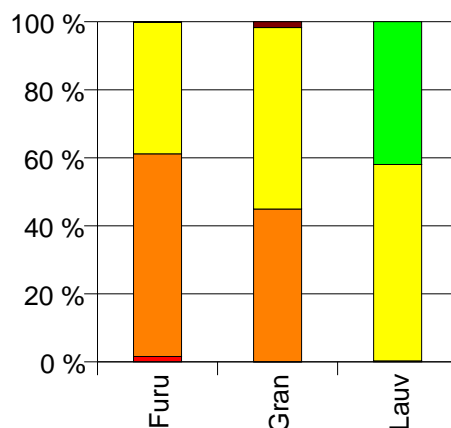
Volum 2008 (kbm)

	Spesial	Sagtømmer	Massevirke	Annet	Vrak	Sum:
Furu	74	2 797	1 814		9	4 694
Gran	17	12 132	14 414		458	27 021
Lauv		4	820	596		1 420
Sum:	91	14 933	17 048	596	467	33 135

Volum (kbm)



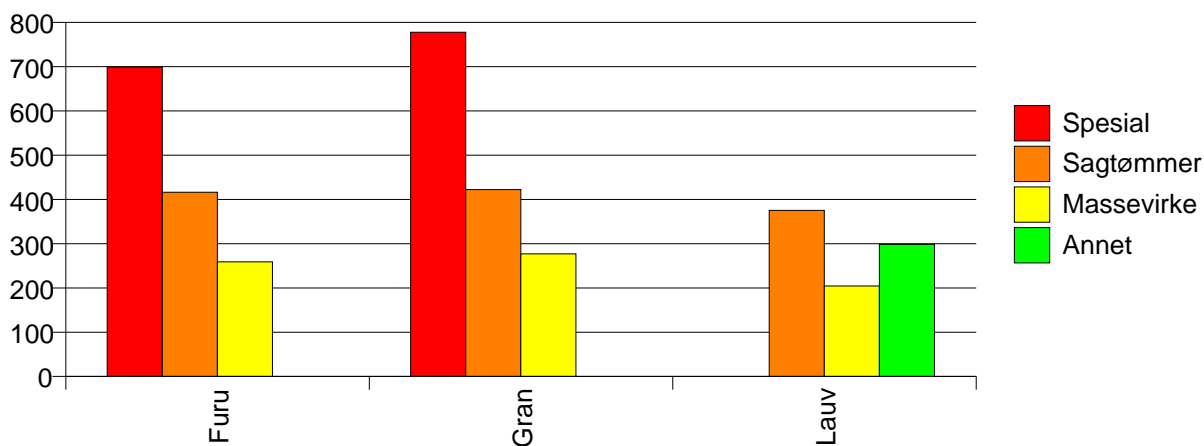
Volum (prosentfordelt)



Gjennomsnittspris 2008 (kr/kbm)

	Spesial	Sagtømmer	Massevirke	Annet	Vrak	Snitt
Furu	699	416	259		0	359
Gran	778	422	277		0	338
Lauv		375	204	298		244
Snitt	714	421	271	298	0	337

Gjennomsnittspris (kr/kbm)

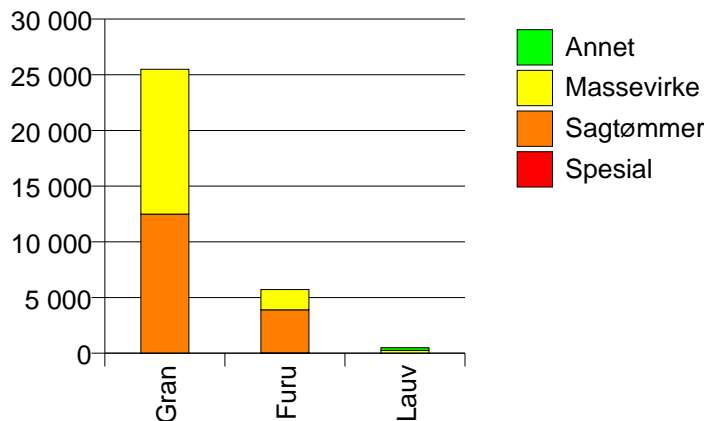


827 HJARTDAL

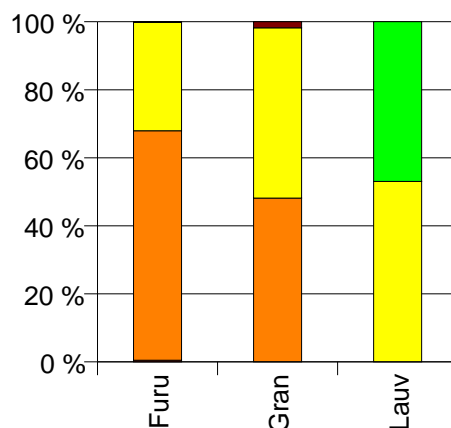
Volum 2008 (kbm)

	Spesial	Sagtømmer	Massevirke	Annet	Vrak	Sum:
Furu	27	3 868	1 827		9	5 731
Gran		12 498	12 998		461	25 957
Lauv			261	231		492
Sum:	27	16 366	15 086	231	470	32 180

Volum (kbm)



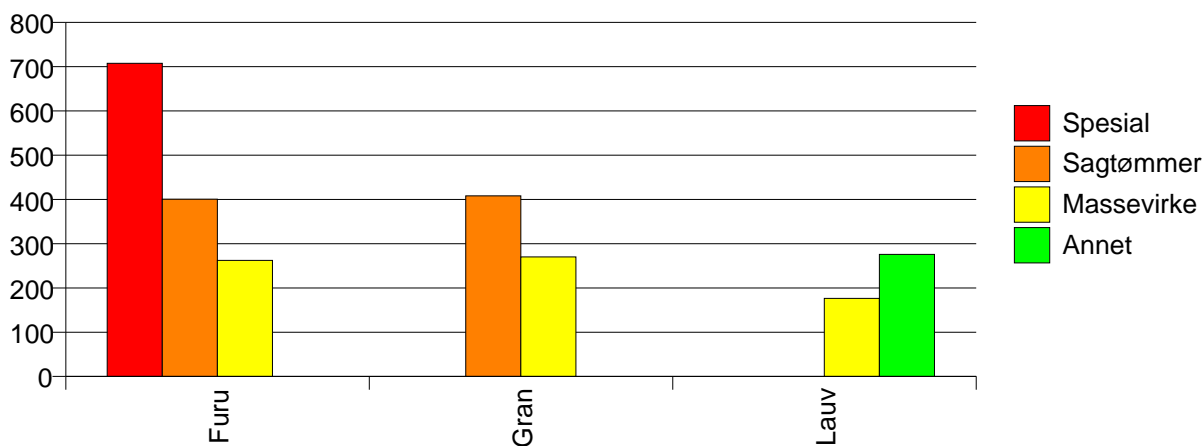
Volum (prosentfordelt)



Gjennomsnittspris 2008 (kr/kbm)

	Spesial	Sagtømmer	Massevirke	Annet	Vrak	Snitt
Furu	707	400	262		0	357
Gran		408	270		0	332
Lauv			176	276		223
Snitt	707	406	268	276	0	335

Gjennomsnittspris (kr/kbm)

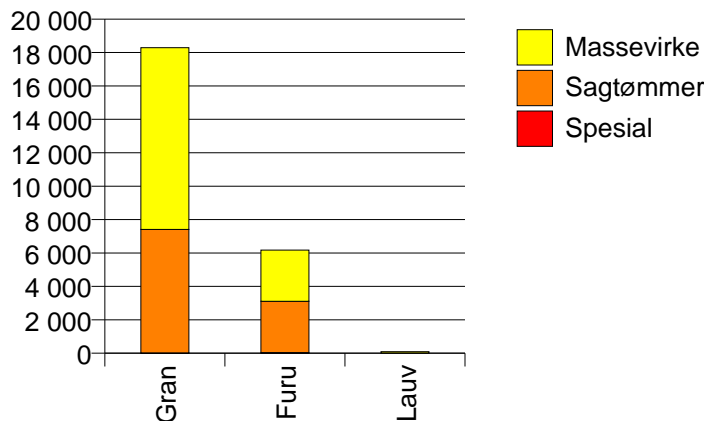


828 SELJORD

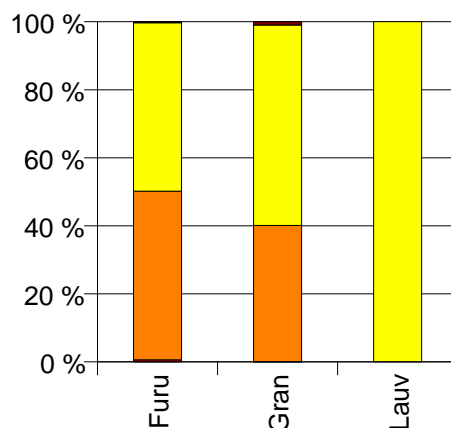
Volum 2008 (kbm)

	Spesial	Sagtømmer	Massevirke	Vrak	Sum:
Furu	38	3 067	3 065	18	6 188
Gran	10	7 398	10 884	175	18 467
Lauv			94		94
Sum:	48	10 465	14 043	193	24 749

Volum (kbm)



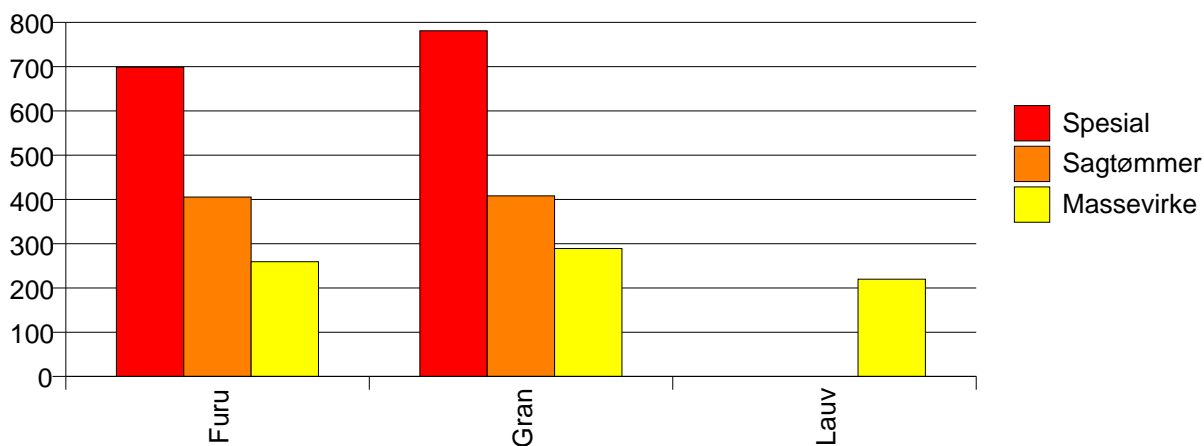
Volum (prosentfordelt)



Gjennomsnittspris 2008 (kr/kbm)

	Spesial	Sagtømmer	Massevirke	Vrak	Snitt
Furu	699	405	259	0	334
Gran	781	408	289	0	334
Lauv			220		220
Snitt	716	407	282	0	334

Gjennomsnittspris (kr/kbm)

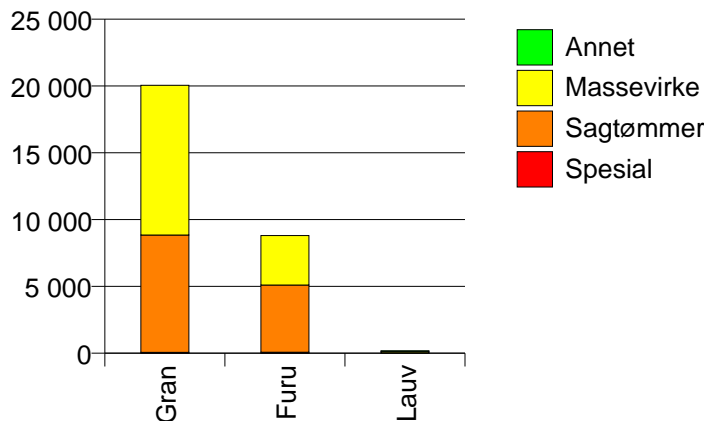


829 KVITSEID

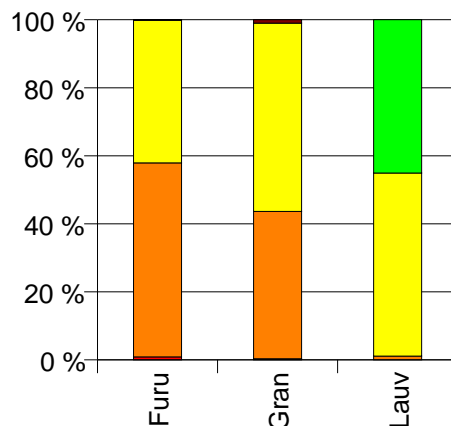
Volum 2008 (kbm)

	Spesial	Sagtømmer	Massevirke	Annet	Vrak	Sum:
Furu	79	5 025	3 695		12	8 811
Gran	67	8 772	11 204		205	20 248
Lauv		2	98	82		182
Sum:	146	13 799	14 997	82	217	29 241

Volum (kbm)



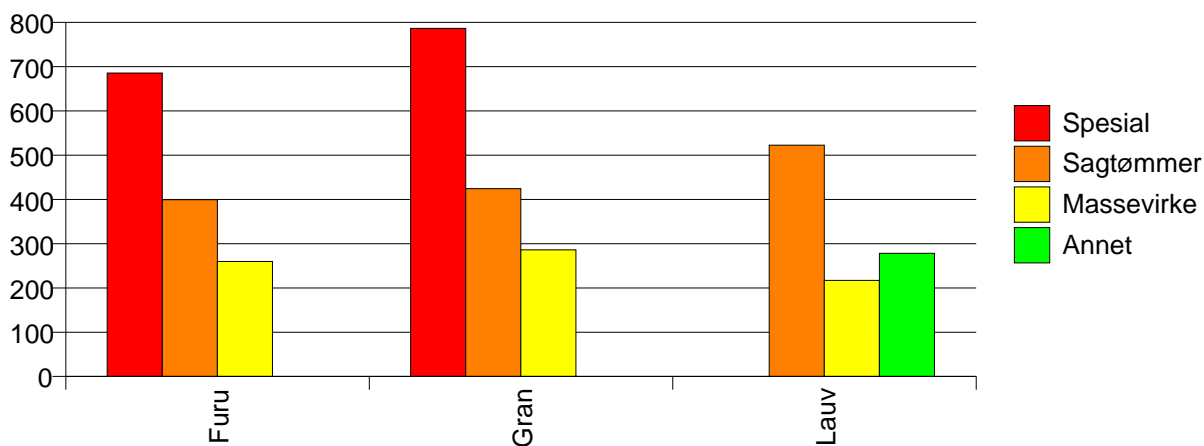
Volum (prosentfordelt)



Gjennomsnittspris 2008 (kr/kbm)

	Spesial	Sagtømmer	Massevirke	Annet	Vrak	Snitt
Furu	685	399	260		0	343
Gran	786	424	286		0	345
Lauv		523	217	278		248
Snitt	732	415	279	278	0	344

Gjennomsnittspris (kr/kbm)

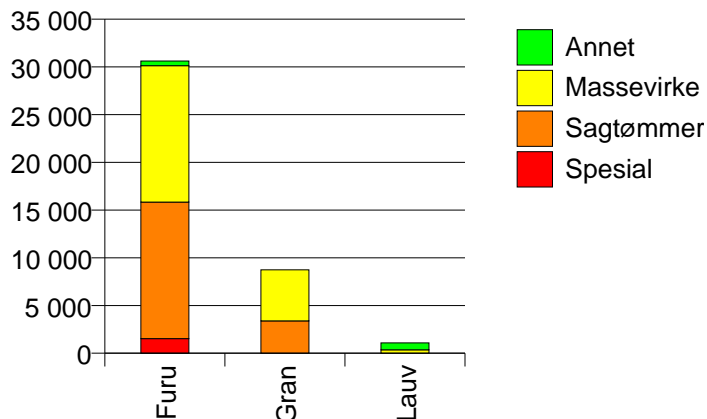


830 NISSEDAL

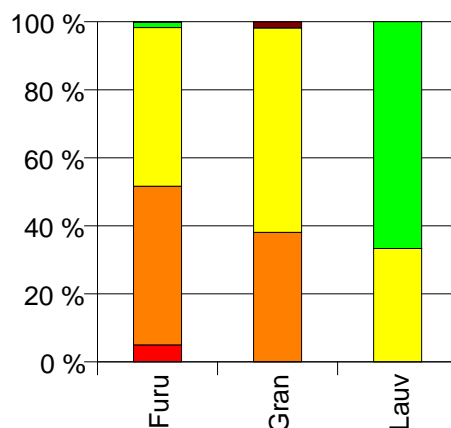
Volum 2008 (kbm)

	Spesial	Sagtømmer	Massevirke	Annet	Vrak	Sum:
Furu	1 527	14 301	14 294	487	33	30 642
Gran		3 389	5 346		161	8 896
Lauv			360	720		1 080
Sum:	1 527	17 690	20 000	1 207	194	40 618

Volum (kbm)



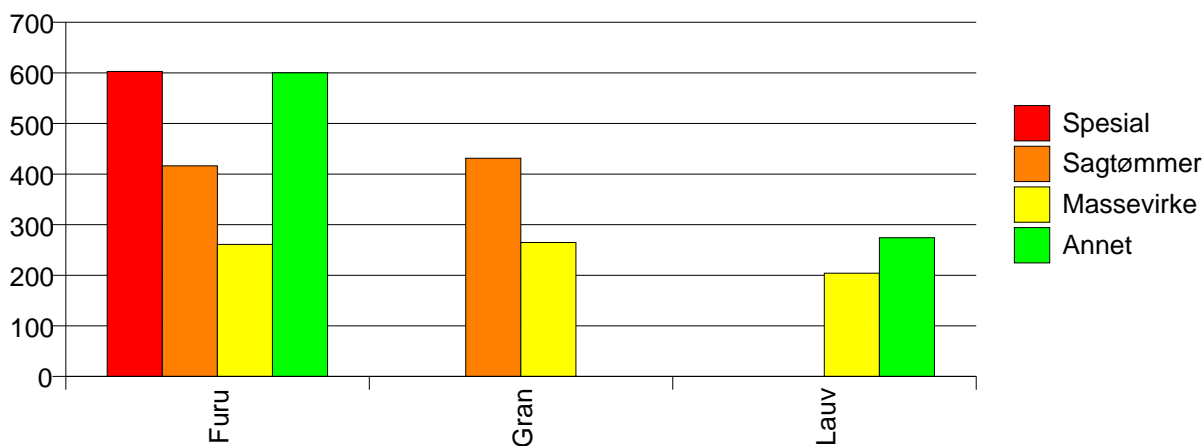
Volum (prosentfordelt)



Gjennomsnittspris 2008 (kr/kbm)

	Spesial	Sagtømmer	Massevirke	Annet	Vrak	Snitt
Furu	603	416	261	600	0	356
Gran		431	265		0	323
Lauv			204	274		251
Snitt	603	419	261	406	0	346

Gjennomsnittspris (kr/kbm)

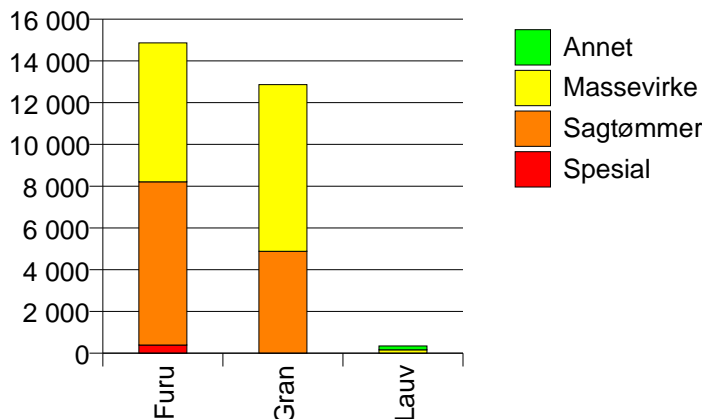


831 FYRESDAL

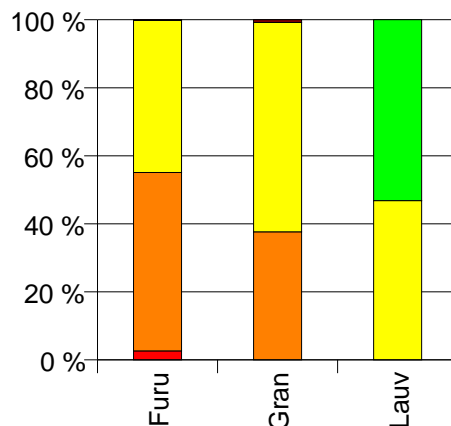
Volum 2008 (kbm)

	Spesial	Sagtømmer	Massevirke	Annet	Vrak	Sum:
Furu	395	7 814	6 653		35	14 897
Gran		4 884	7 981		105	12 970
Lauv			162	184		346
Sum:	395	12 698	14 796	184	140	28 213

Volum (kbm)



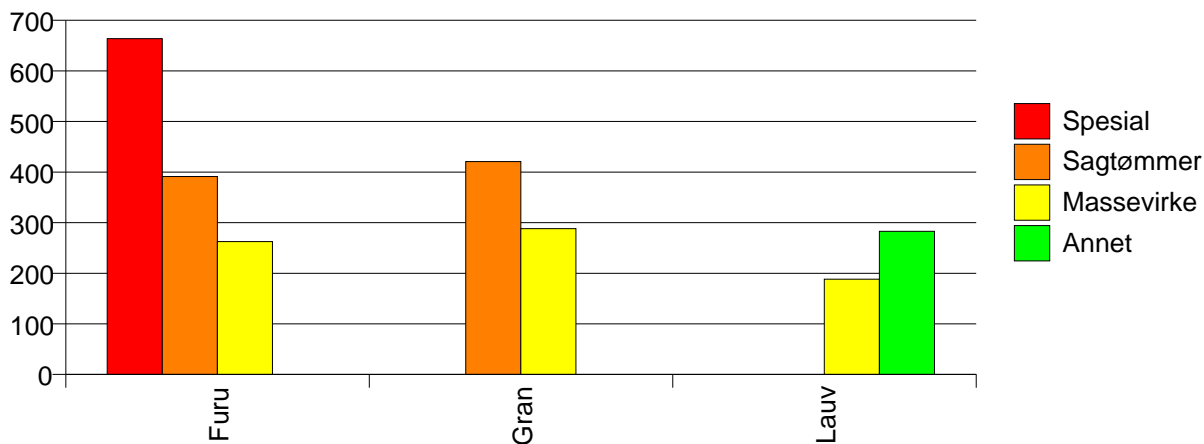
Volum (prosentfordelt)



Gjennomsnittspris 2008 (kr/kbm)

	Spesial	Sagtømmer	Massevirke	Annet	Vrak	Snitt
Furu	664	391	263		0	340
Gran		421	288		0	336
Lauv			188	283		239
Snitt	664	403	276	283	0	337

Gjennomsnittspris (kr/kbm)

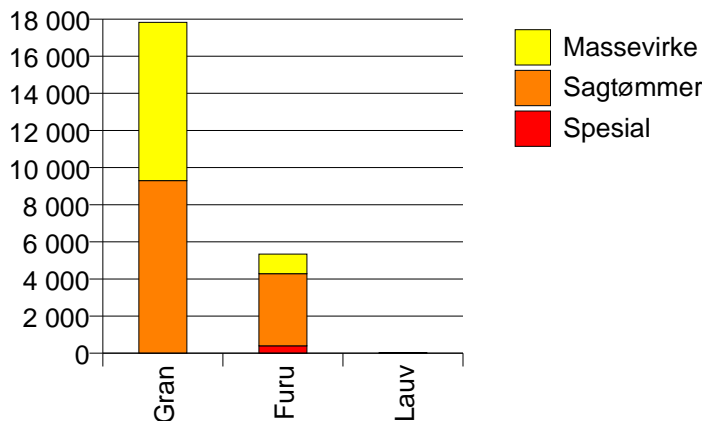


833 TOKKE

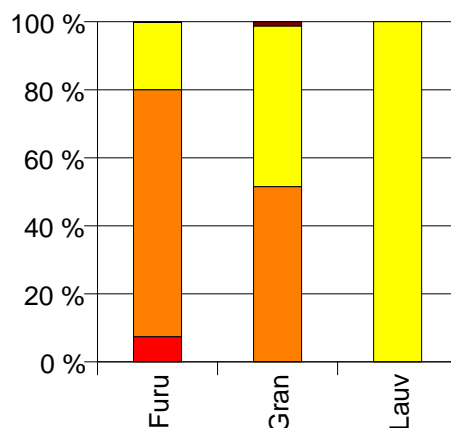
Volum 2008 (kbm)

	Spesial	Sagtømmer	Massevirke	Vrak	Sum:
Furu	397	3 885	1 058	11	5 351
Gran		9 297	8 524	223	18 044
Lauv			24		24
Sum:	397	13 182	9 606	234	23 419

Volum (kbm)



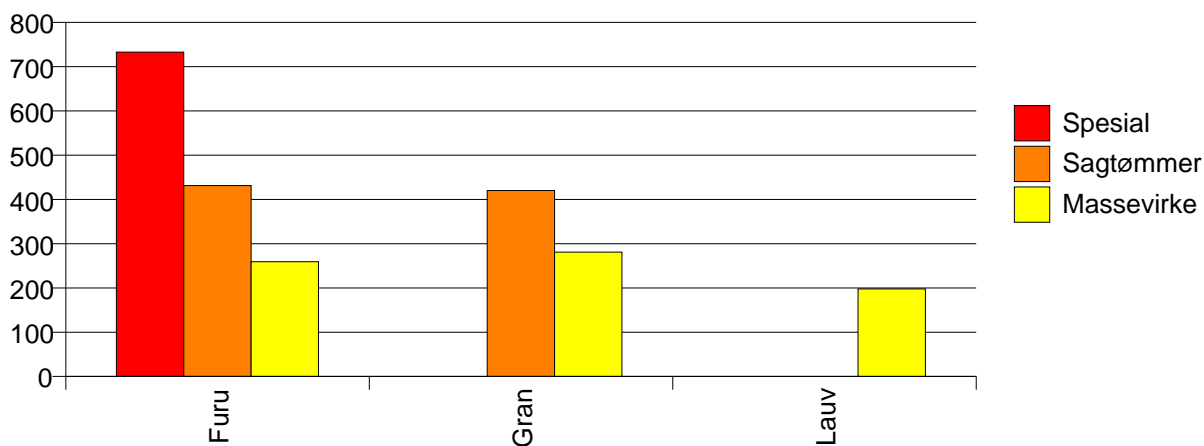
Volum (prosentfordelt)



Gjennomsnittspris 2008 (kr/kbm)

	Spesial	Sagtømmer	Massevirke	Vrak	Snitt
Furu	733	431	259	0	419
Gran		420	281	0	349
Lauv			198		198
Snitt	733	423	278	0	365

Gjennomsnittspris (kr/kbm)

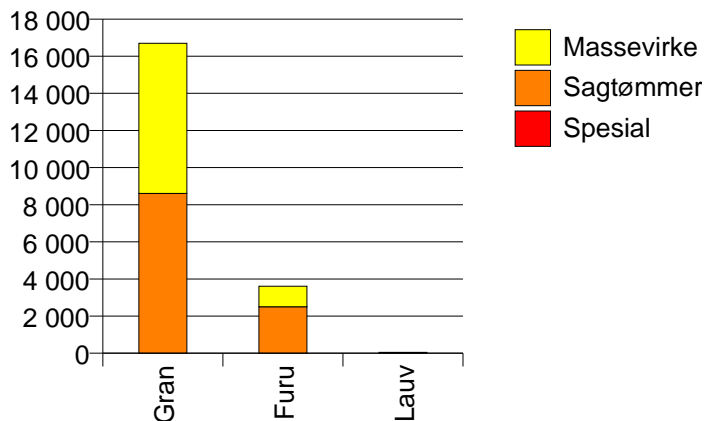


834 VINJE

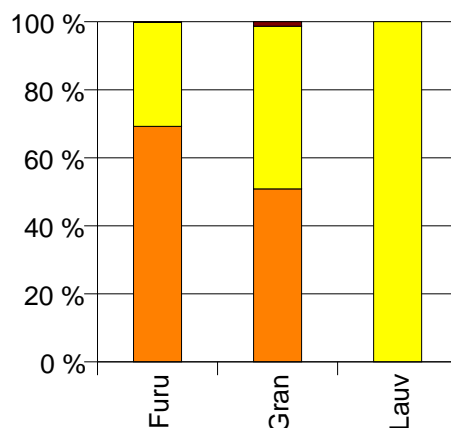
Volum 2008 (kbm)

	Spesial	Sagtømmer	Massevirke	Vrak	Sum:
Furu	1	2 503	1 105	8	3 617
Gran		8 605	8 094	223	16 922
Lauv			47		47
Sum:	1	11 108	9 246	231	20 586

Volum (kbm)



Volum (prosentfordelt)



Gjennomsnittspris 2008 (kr/kbm)

	Spesial	Sagtømmer	Massevirke	Vrak	Snitt
Furu	410	392	258	0	350
Gran		393	285	0	336
Lauv			178		178
Snitt	410	393	281	0	338

Gjennomsnittspris (kr/kbm)

