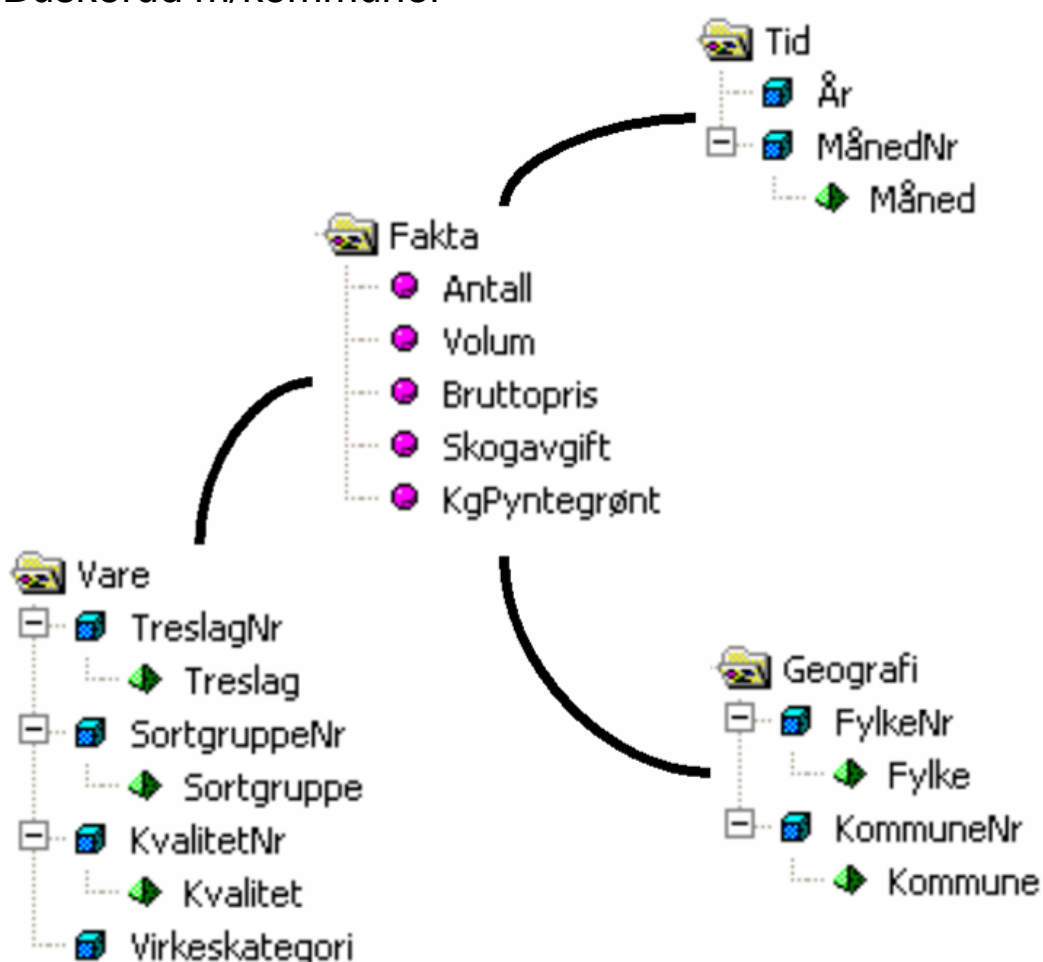


Virkestatistikk fra SKOG-DATA AS

Buskerud m/kommuner



Dataene i rapporten er hentet fra databasen som inneholder virkesdata med tilhørende innbetalinger av skogavgift. Rapporten er laget med Business Objects, som er sluttbrukerverktøyet i Skog-Data sine nye datavarehus-løsninger. Business Objects er ett meget sterkt rapportverktøy som kan presentere store mengder data effektivt.

Rapportene kan lastes ned fra www.skogdata.no/statistikk

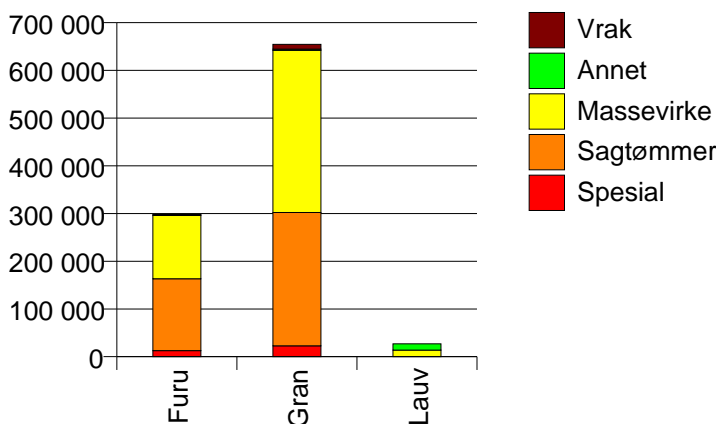
For mer informasjon, kontakt: tabh@skogdata.no

Buskerud

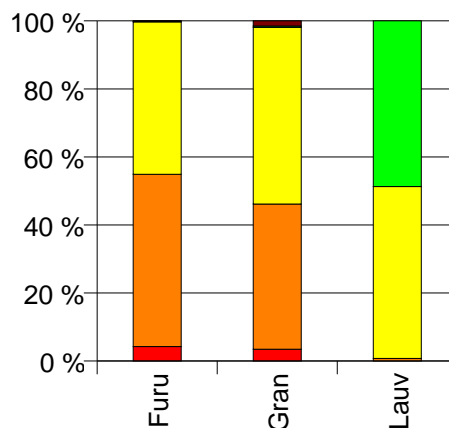
Volum 2008

	Spesial	Sagtømmer	Massevirke	Annet	Vrak	Sum:
Furu	12 696	150 580	133 296	505	385	297 462
Gran	22 729	279 343	339 617	2 518	9 985	654 192
Lauv	5	201	13 652	13 152		27 010
Sum:	35 430	430 124	486 565	16 175	10 370	978 664

Volum (kbm)



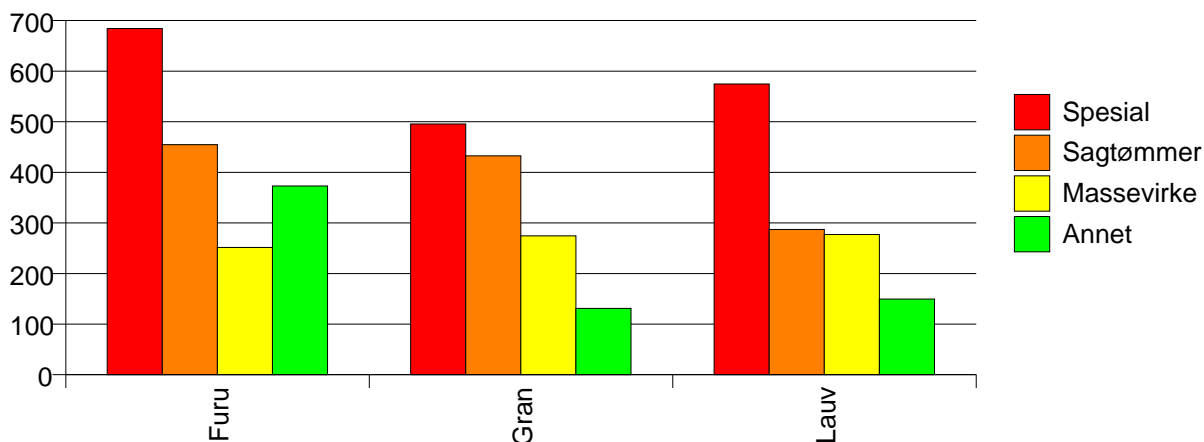
Volum (prosentfordelt)



Gjennomsnittspris 2008 (kr/kbm)

	Spesial	Sagtømmer	Massevirke	Annet	Vrak	Snitt:
Furu	684	455	251	373	0	373
Gran	496	433	275	131	0	345
Lauv	575	287	277	149		215
Snitt:	563	440	268	154	0	350

Gjennomsnittspris (kr/kbm)

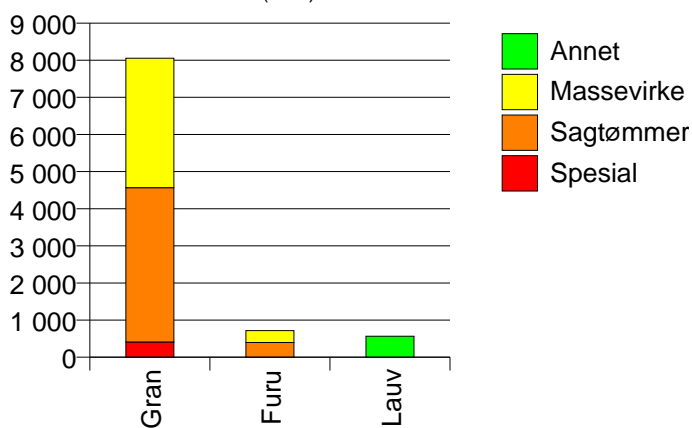


602 DRAMMEN

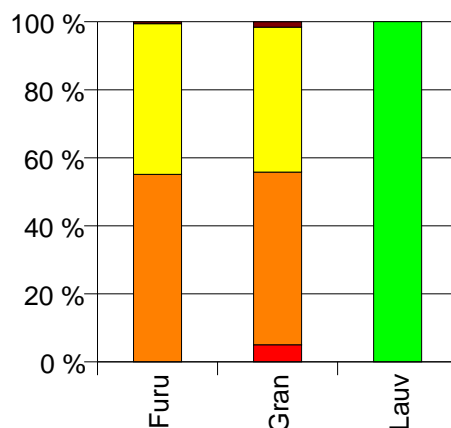
Volum 2008 (kbm)

	Spesial	Sagtømmer	Massevirke	Annet	Vrak	Sum:
Furu		398	320		4	722
Gran	412	4 154	3 489		129	8 184
Lauv				566		566
Sum:	412	4 552	3 809	566	133	9 472

Volum (kbm)



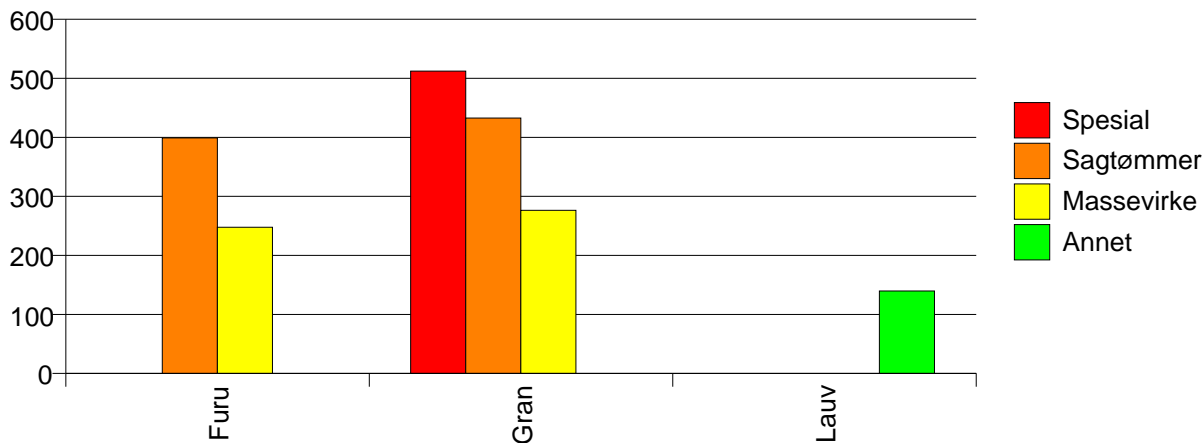
Volum (prosentfordelt)



Gjennomsnittspris 2008 (kr/kbm)

	Spesial	Sagtømmer	Massevirke	Annet	Vrak	Snitt
Furu		399	248		0	330
Gran	512	433	276		0	363
Lauv				140		140
Snitt	512	430	274	140	0	347

Gjennomsnittspris (kr/kbm)

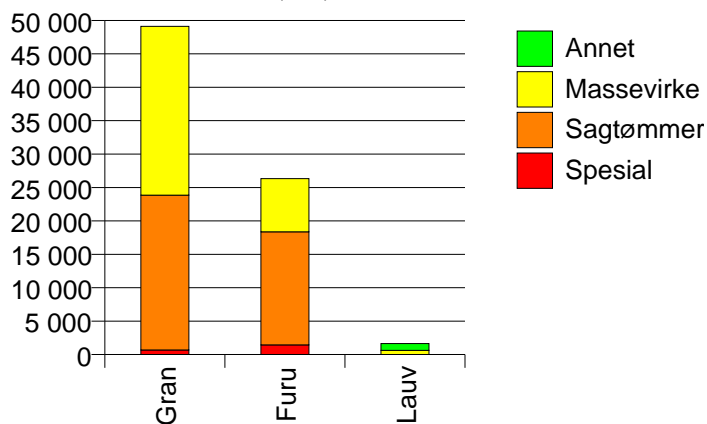


604 KONGSBERG

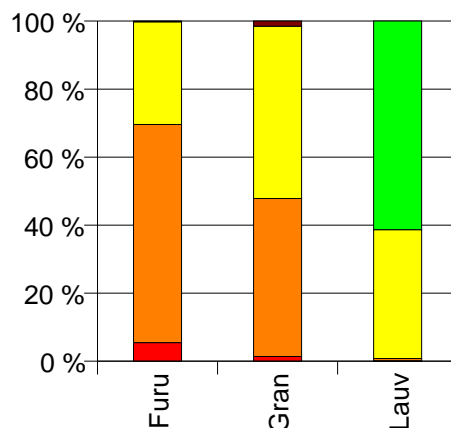
Volum 2008 (kbm)

	Spesial	Sagtømmer	Massevirke	Annet	Vrak	Sum:
Furu	1 440	16 927	7 954		62	26 383
Gran	697	23 164	25 257		755	49 873
Lauv	2	11	622	1 007		1 642
Sum:	2 139	40 102	33 833	1 007	817	77 898

Volum (kbm)



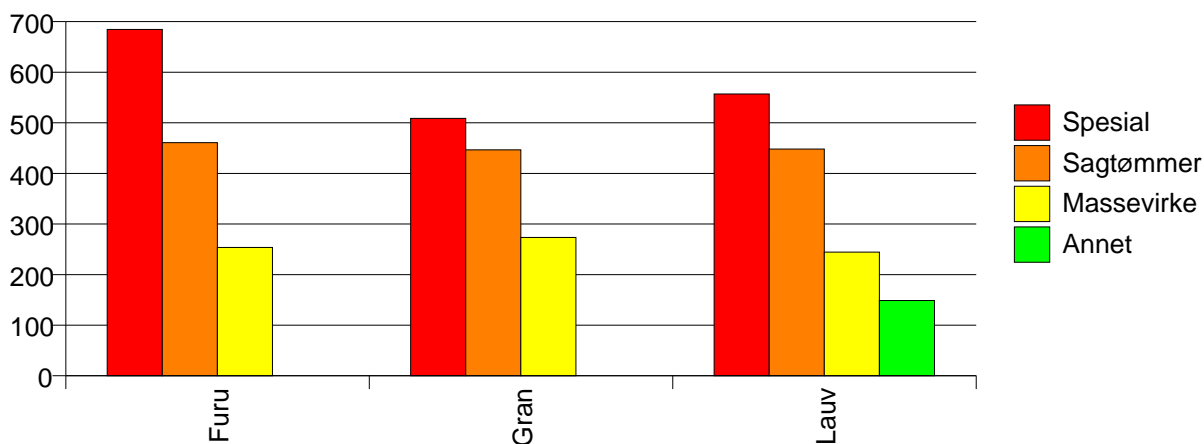
Volum (prosentfordelt)



Gjennomsnittspris 2008 (kr/kbm)

	Spesial	Sagtømmer	Massevirke	Annet	Vrak	Snitt
Furu	685	461	254		0	409
Gran	509	447	273		2	353
Lauv	557	448	245	149		188
Snitt	627	453	268	149	2	369

Gjennomsnittspris (kr/kbm)

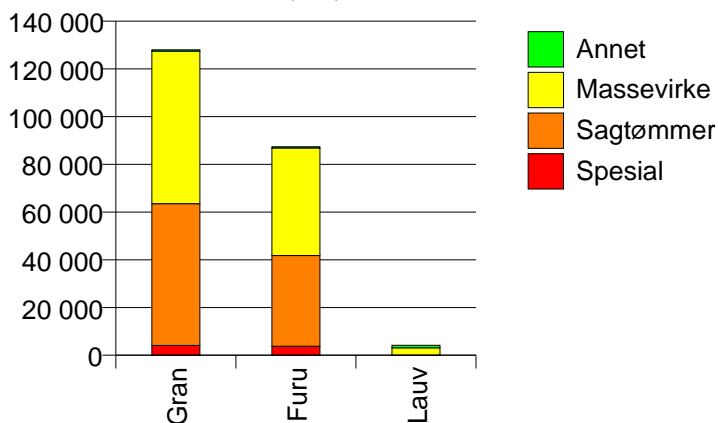


605 RINGERIKE

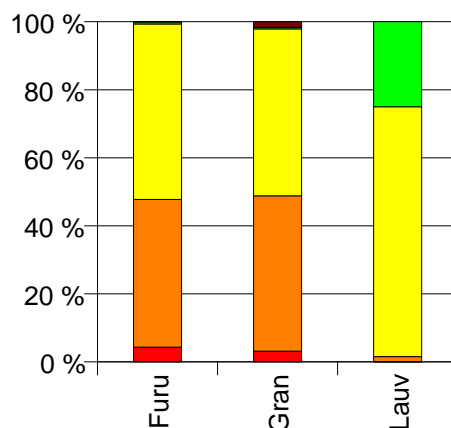
Volum 2008 (kbm)

	Spesial	Sagtømmer	Massevirke	Annet	Vrak	Sum:
Furu	3 778	37 976	45 098	505	63	87 420
Gran	4 089	59 421	63 881	575	2 137	130 103
Lauv	3	61	3 046	1 036		4 146
Sum:	7 870	97 458	112 025	2 116	2 200	221 669

Volum (kbm)



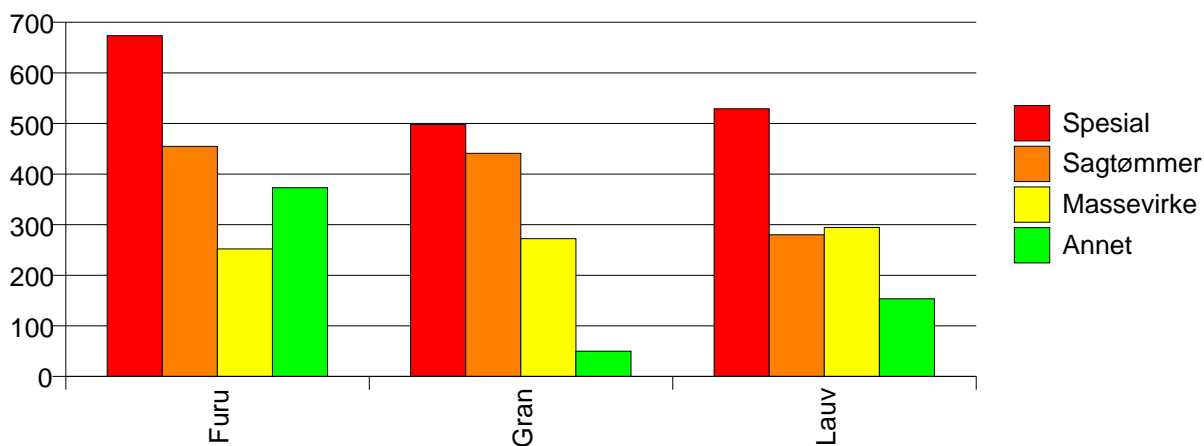
Volum (prosentfordelt)



Gjennomsnittspris 2008 (kr/kbm)

	Spesial	Sagtømmer	Massevirke	Annet	Vrak	Snitt
Furu	673	455	252	373	0	359
Gran	498	441	272	50	0	351
Lauv	529	280	295	154		259
Snitt	582	446	265	178	0	352

Gjennomsnittspris (kr/kbm)

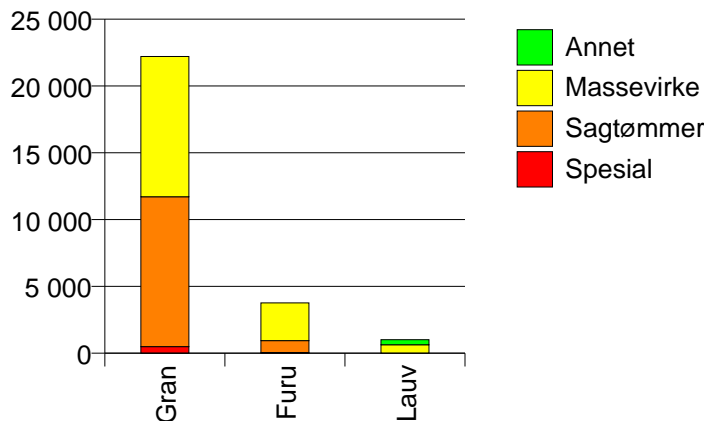


612 HOLE

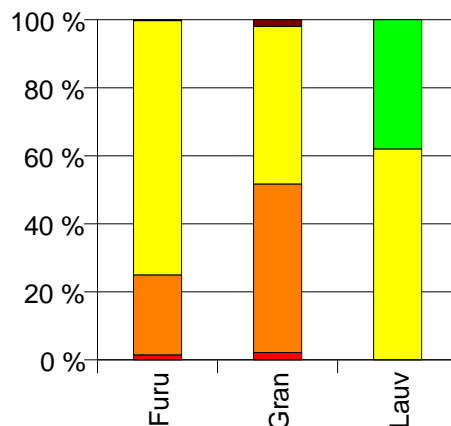
Volum 2008 (kbm)

	Spesial	Sagtømmer	Massevirke	Annet	Vrak	Sum:
Furu	55	889	2 826		10	3 780
Gran	490	11 220	10 487		447	22 644
Lauv			631	386		1 017
Sum:	545	12 109	13 944	386	457	27 441

Volum (kbm)



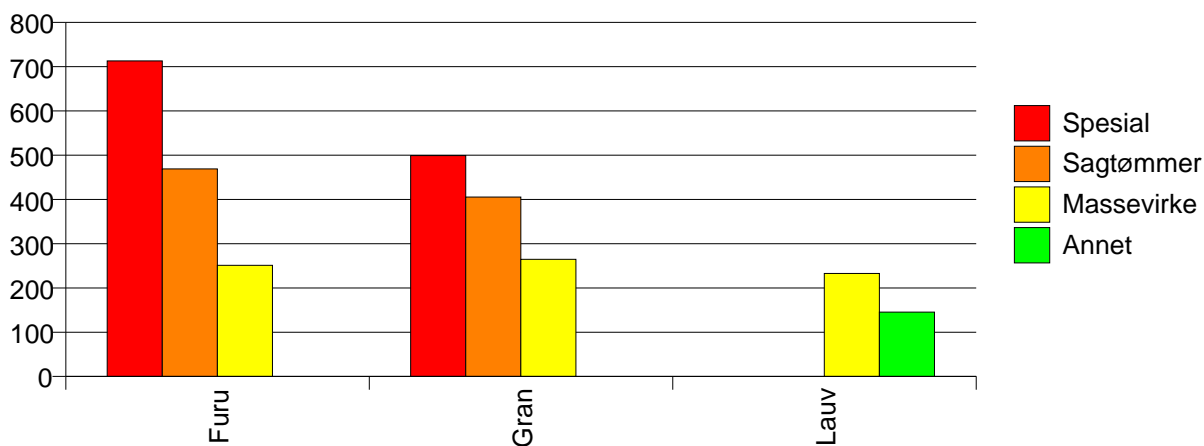
Volum (prosentfordelt)



Gjennomsnittspris 2008 (kr/kbm)

	Spesial	Sagtømmer	Massevirke	Annet	Vrak	Snitt
Furu	713	469	251		0	308
Gran	499	405	264		0	334
Lauv			233	145		200
Snitt	520	410	260	145	0	326

Gjennomsnittspris (kr/kbm)

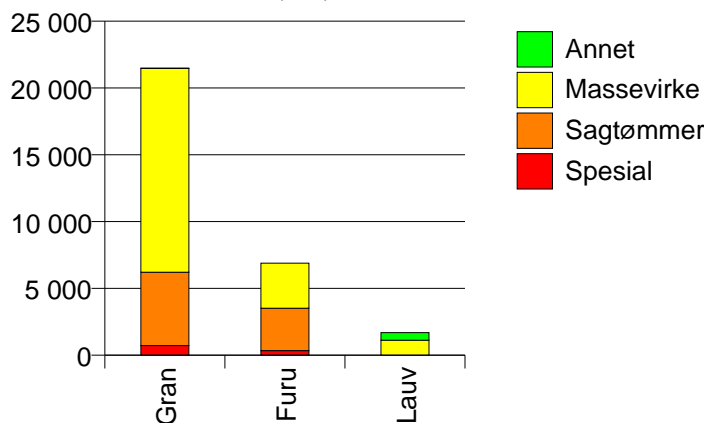


615 FLÅ

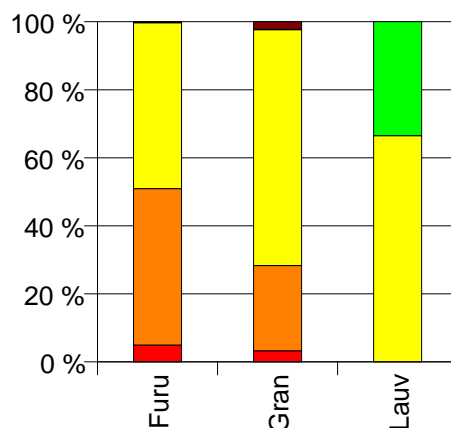
Volum 2008 (kbm)

	Spesial	Sagtømmer	Massevirke	Annet	Vrak	Sum:
Furu	342	3 178	3 367		21	6 908
Gran	720	5 495	15 234	34	474	21 957
Lauv			1 122	565		1 687
Sum:	1 062	8 673	19 723	599	495	30 552

Volum (kbm)



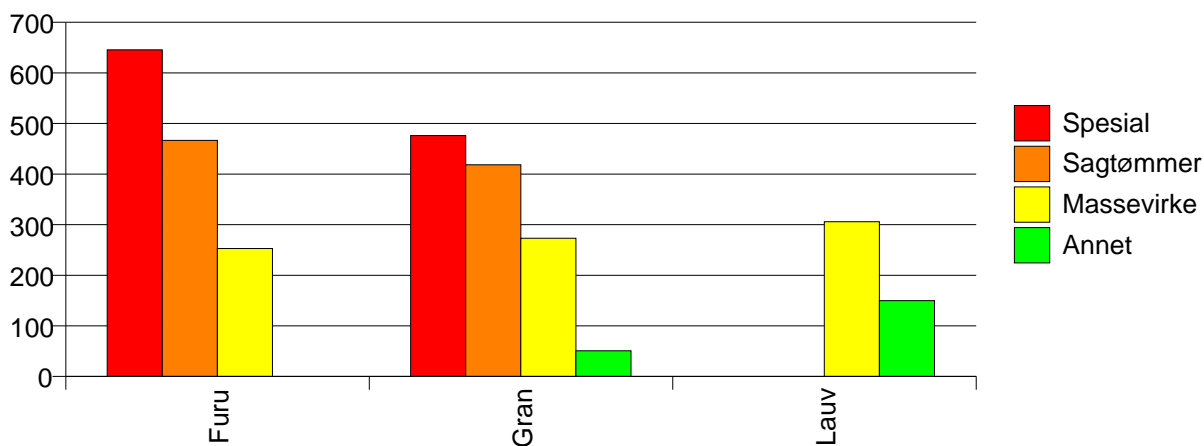
Volum (prosentfordelt)



Gjennomsnittspris 2008 (kr/kbm)

	Spesial	Sagtømmer	Massevirke	Annet	Vrak	Snitt
Furu	645	467	253		0	370
Gran	476	418	273	51	0	310
Lauv			306	150		254
Snitt	531	436	272	144	0	320

Gjennomsnittspris (kr/kbm)

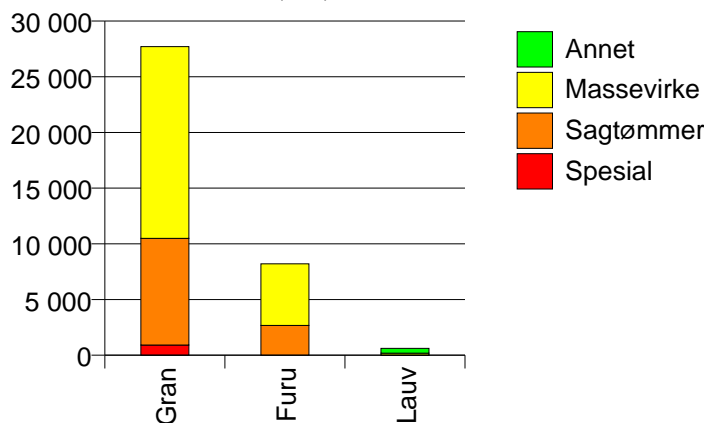


616 NES

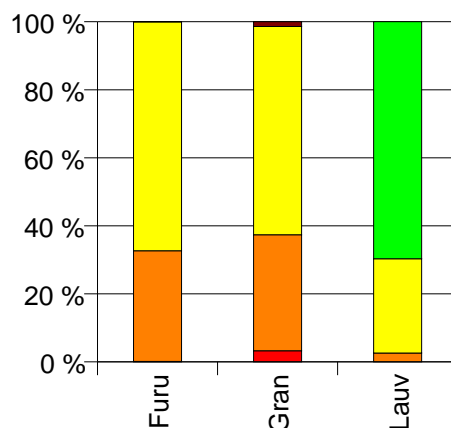
Volum 2008 (kbm)

	Spesial	Sagtømmer	Massevirke	Annet	Vrak	Sum:
Furu	10	2 669	5 523		1	8 203
Gran	919	9 579	17 205		389	28 092
Lauv		16	171	430		617
Sum:	929	12 264	22 899	430	390	36 912

Volum (kbm)



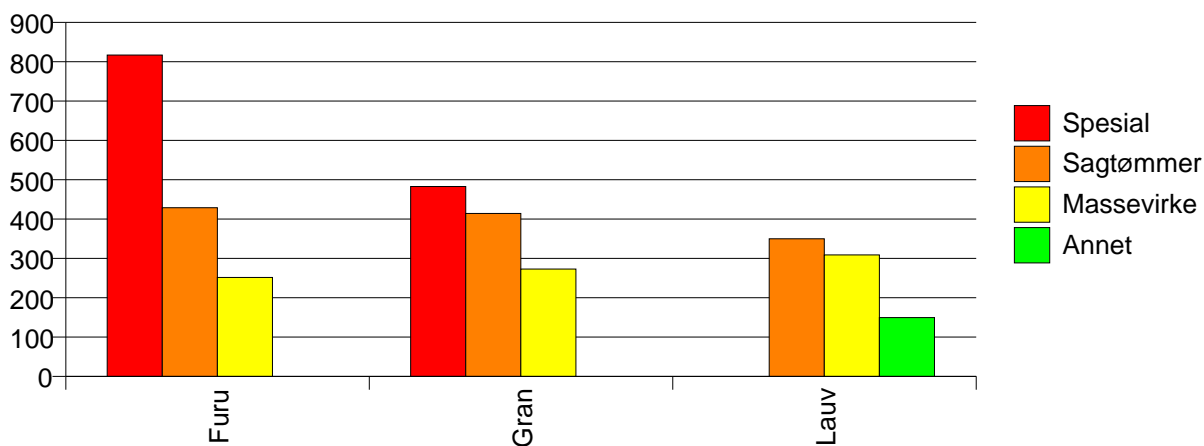
Volum (prosentfordelt)



Gjennomsnittspris 2008 (kr/kbm)

	Spesial	Sagtømmer	Massevirke	Annet	Vrak	Snitt
Furu	817	429	252		0	310
Gran	483	414	273		0	324
Lauv		350	309	150		199
Snitt	486	417	268	150	0	319

Gjennomsnittspris (kr/kbm)

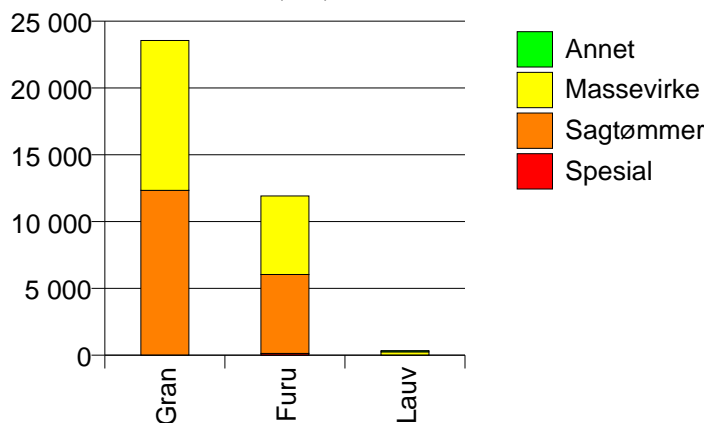


617 GOL

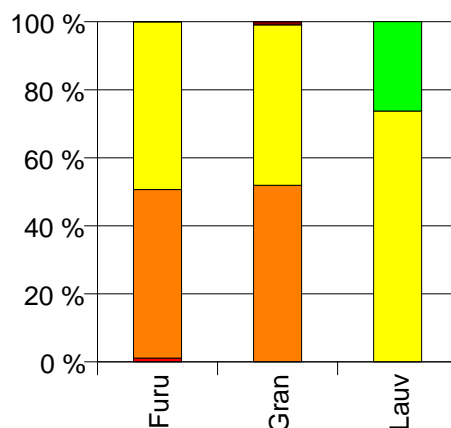
Volum 2008 (kbm)

	Spesial	Sagtømmer	Massevirke	Annet	Vrak	Sum:
Furu	135	5 903	5 878		1	11 917
Gran		12 337	11 207	0	221	23 765
Lauv			253	90		343
Sum:	135	18 240	17 338	90	222	36 025

Volum (kbm)



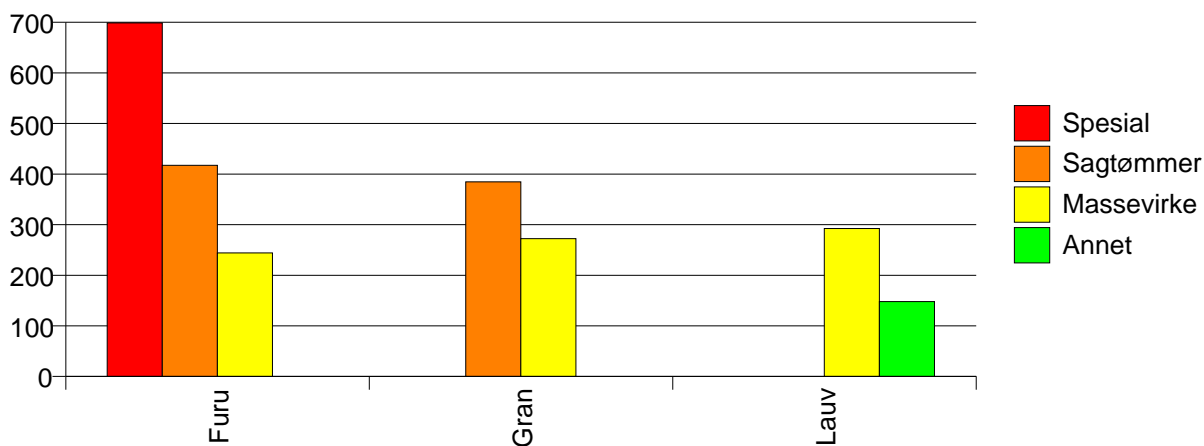
Volum (prosentfordelt)



Gjennomsnittspris 2008 (kr/kbm)

	Spesial	Sagtømmer	Massevirke	Annet	Vrak	Snitt
Furu	699	417	244		0	335
Gran		385	272	#DIV/0	0	328
Lauv			292	148		255
Snitt	699	395	263	148	0	330

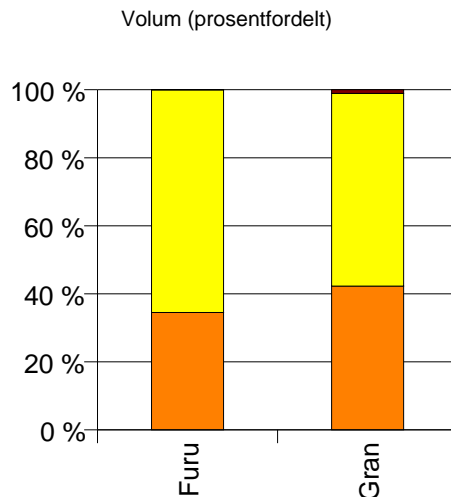
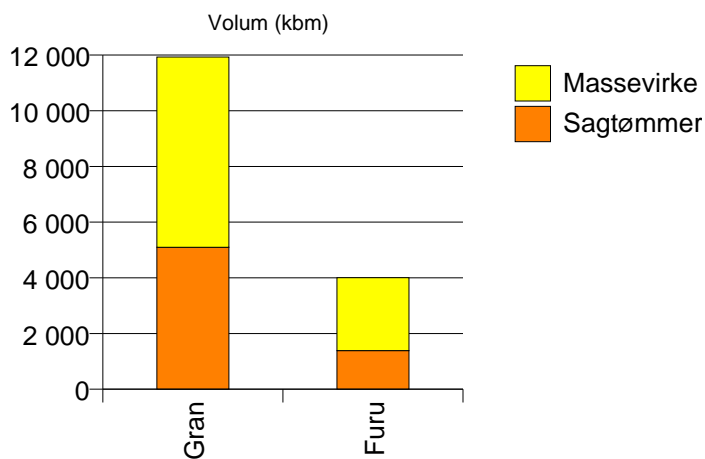
Gjennomsnittspris (kr/kbm)



618 HEMSEDAL

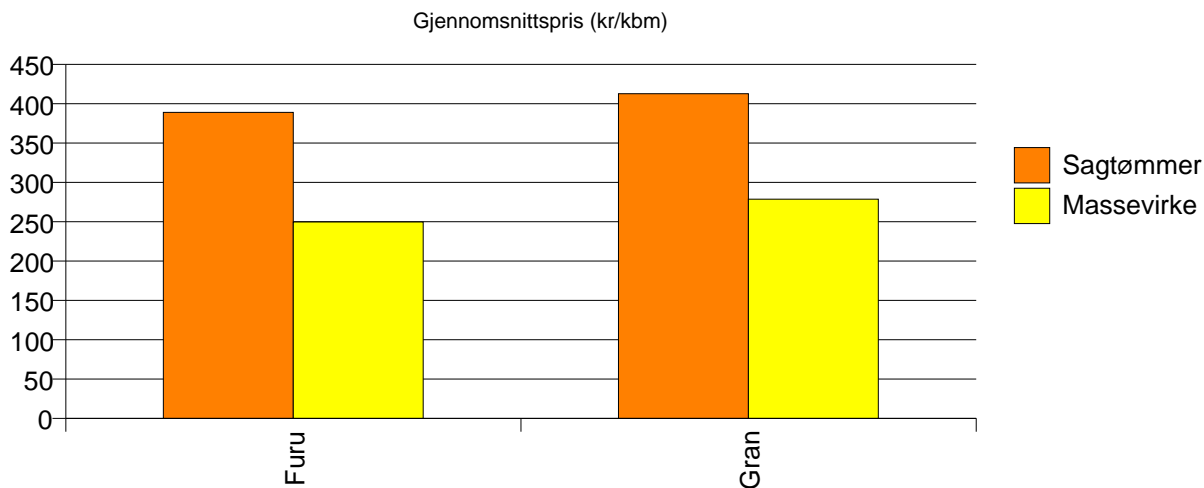
Volum 2008 (kbm)

	Sagtømmer	Massevirke	Vrak	Sum:
Furu	1 384	2 623	1	4 008
Gran	5 097	6 835	129	12 061
Sum:	6 481	9 458	130	16 069



Gjennomsnittspris 2008 (kr/kbm)

	Sagtømmer	Massevirke	Vrak	Snitt
Furu	389	250	0	298
Gran	413	279	0	332
Snitt	408	271	0	324

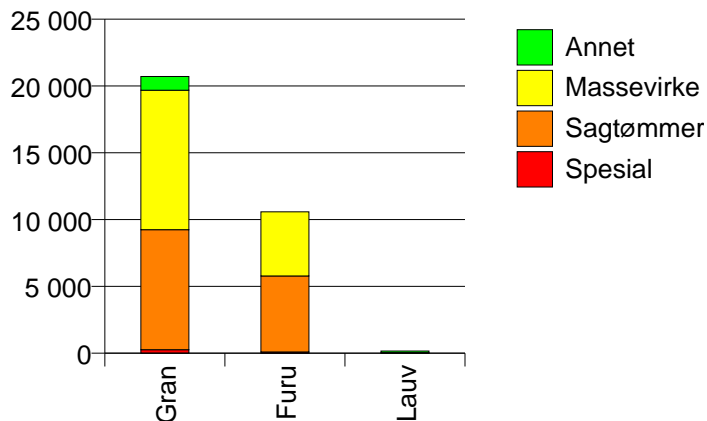


619 ÅL

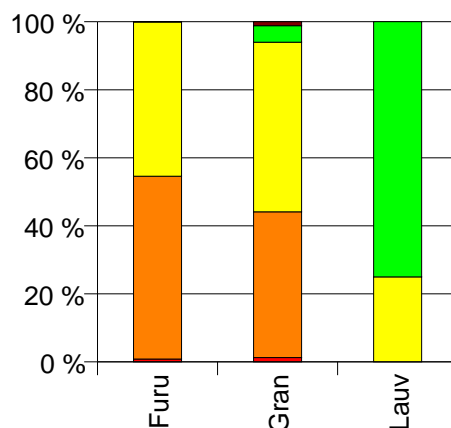
Volum 2008 (kbm)

	Spesial	Sagtømmer	Massevirke	Annet	Vrak	Sum:
Furu	91	5 689	4 798		8	10 586
Gran	267	8 973	10 442	1 019	240	20 941
Lauv			40	120		160
Sum:	358	14 662	15 280	1 139	248	31 687

Volum (kbm)



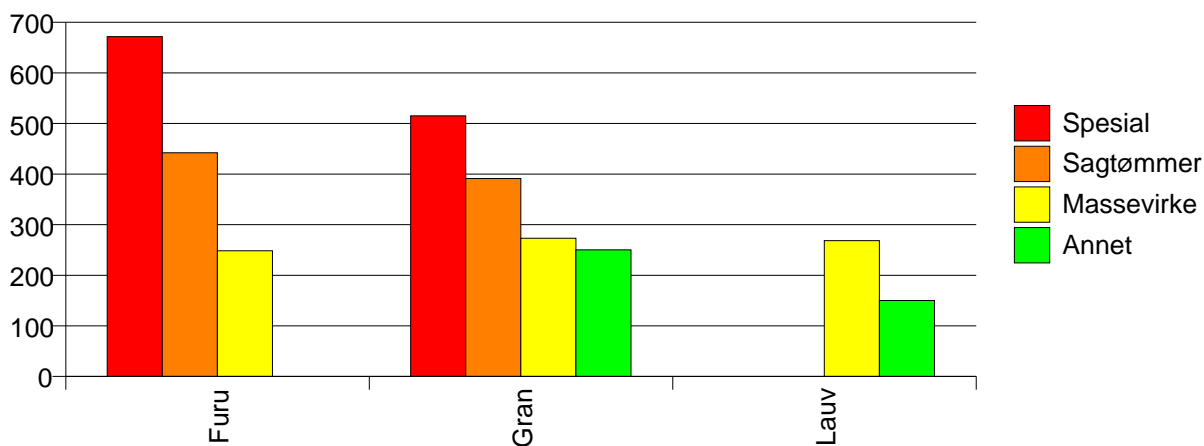
Volum (prosentfordelt)



Gjennomsnittspris 2008 (kr/kbm)

	Spesial	Sagtømmer	Massevirke	Annet	Vrak	Snitt
Furu	672	442	248		0	356
Gran	515	391	273	250	0	323
Lauv			268	150		180
Snitt	555	411	265	240	0	333

Gjennomsnittspris (kr/kbm)

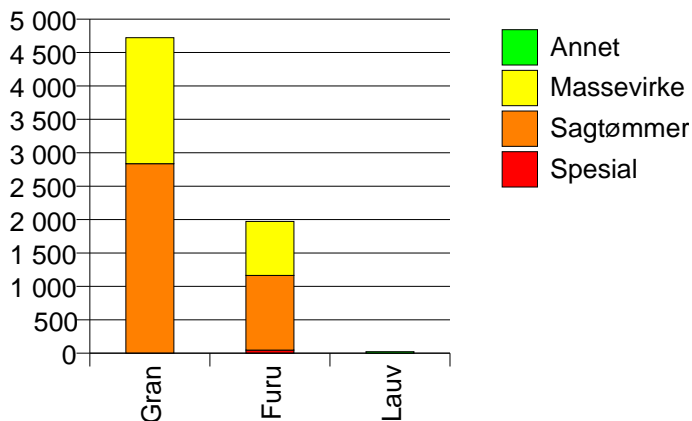


620 HOL

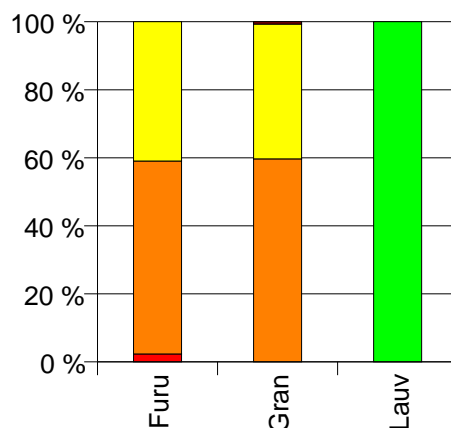
Volum 2008 (kbm)

	Spesial	Sagtømmer	Massevirke	Annet	Vrak	Sum:
Furu	46	1 119	808			1 973
Gran		2 837	1 885		32	4 754
Lauv				22		22
Sum:	46	3 956	2 693	22	32	6 749

Volum (kbm)



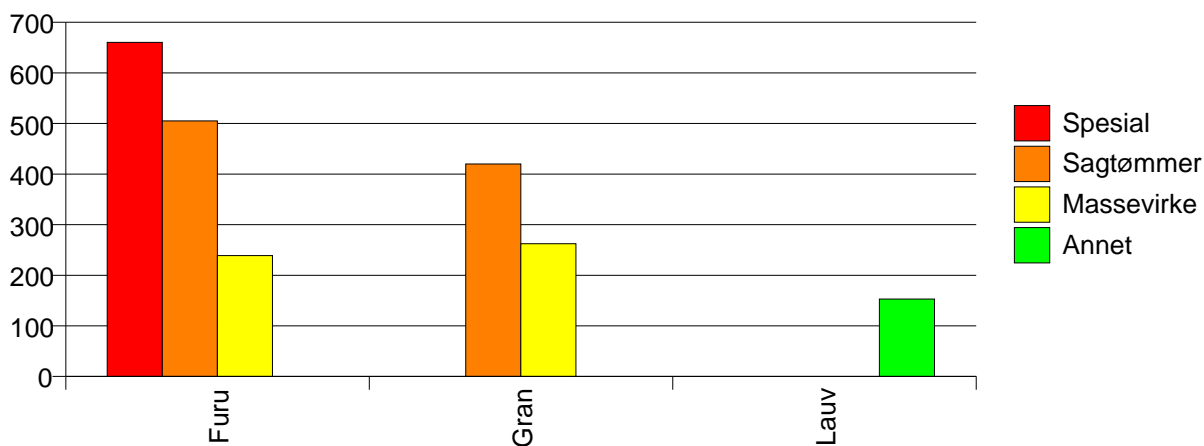
Volum (prosentfordelt)



Gjennomsnittspris 2008 (kr/kbm)

	Spesial	Sagtømmer	Massevirke	Annet	Vrak	Snitt
Furu	660	505	239			400
Gran		420	262		0	355
Lauv				153		153
Snitt	660	444	255	153	0	367

Gjennomsnittspris (kr/kbm)

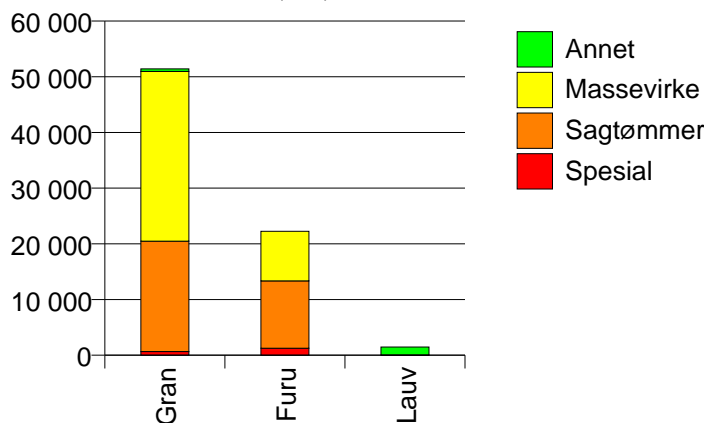


621 SIGDAL

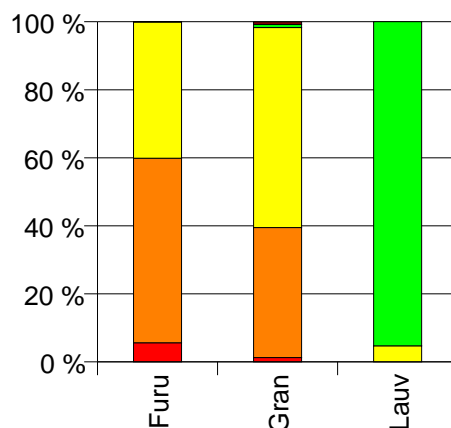
Volum 2008 (kbm)

	Spesial	Sagtømmer	Massevirke	Annet	Vrak	Sum:
Furu	1 251	12 088	8 925		16	22 280
Gran	659	19 815	30 478	464	425	51 841
Lauv			70	1 411		1 481
Sum:	1 910	31 903	39 473	1 875	441	75 602

Volum (kbm)



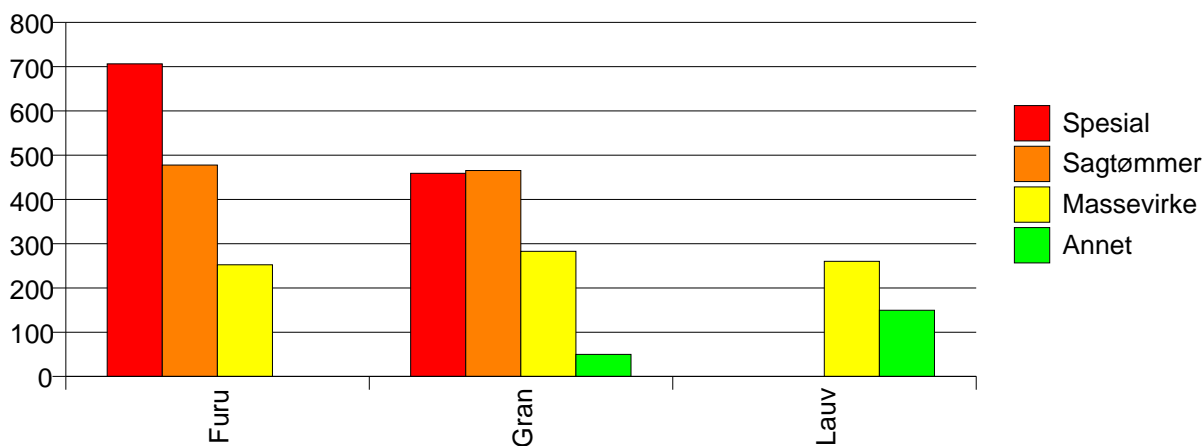
Volum (prosentfordelt)



Gjennomsnittspris 2008 (kr/kbm)

	Spesial	Sagtømmer	Massevirke	Annet	Vrak	Snitt
Furu	706	477	252		0	400
Gran	459	465	283	50	0	350
Lauv			260	150		155
Snitt	621	470	276	125	0	361

Gjennomsnittspris (kr/kbm)

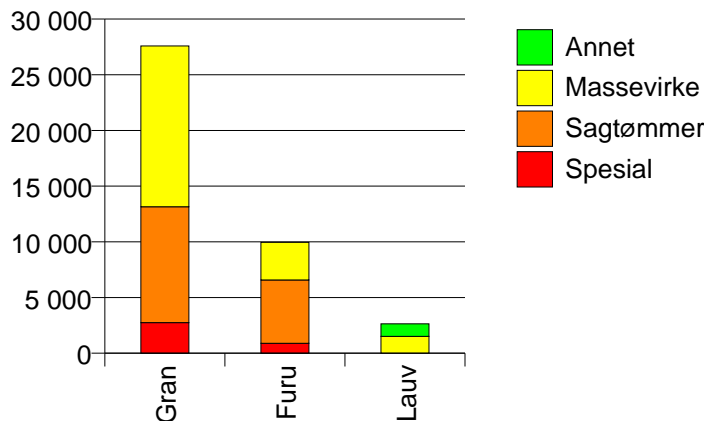


622 KRØDSHERAD

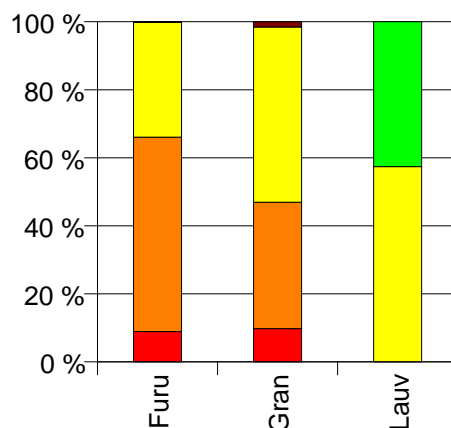
Volum 2008 (kbm)

	Spesial	Sagtømmer	Massevirke	Annet	Vrak	Sum:
Furu	889	5 693	3 368		12	9 962
Gran	2 742	10 413	14 430		432	28 017
Lauv			1 513	1 123		2 636
Sum:	3 631	16 106	19 311	1 123	444	40 615

Volum (kbm)



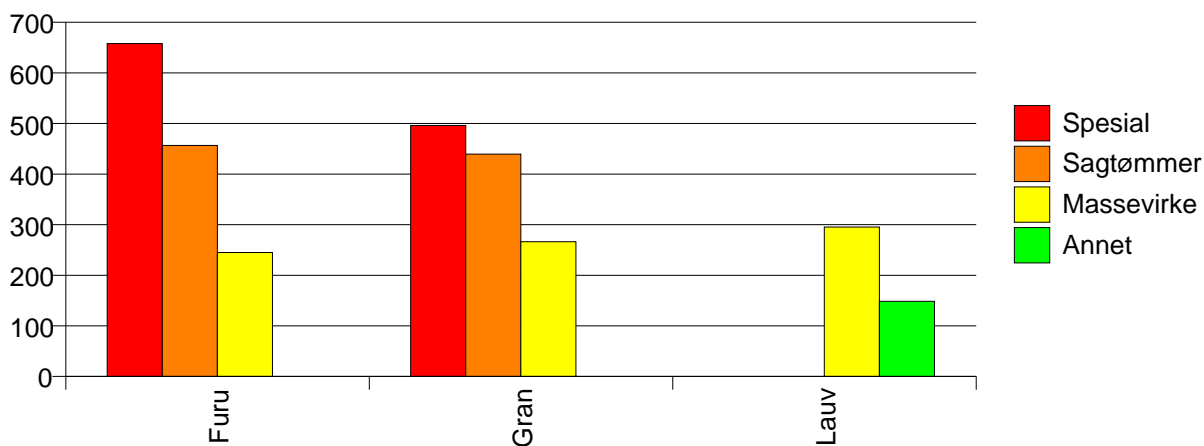
Volum (prosentfordelt)



Gjennomsnittspris 2008 (kr/kbm)

	Spesial	Sagtømmer	Massevirke	Annet	Vrak	Snitt
Furu	658	457	245		0	402
Gran	496	440	266		0	349
Lauv			295	148		233
Snitt	536	446	265	148	0	355

Gjennomsnittspris (kr/kbm)

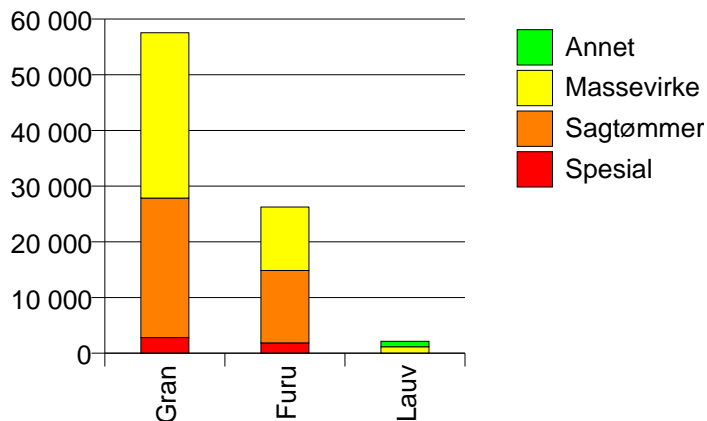


623 MODUM

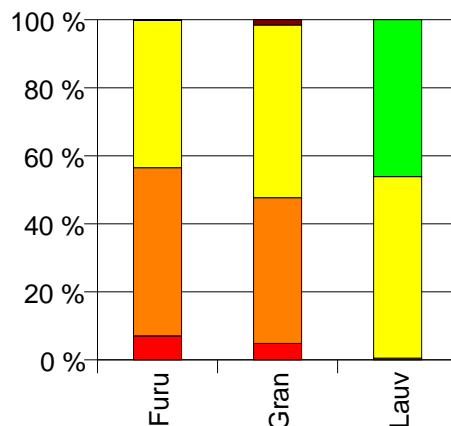
Volum 2008 (kbm)

	Spesial	Sagtømmer	Massevirke	Annet	Vrak	Sum:
Furu	1 865	12 991	11 391		45	26 292
Gran	2 820	25 043	29 678		904	58 445
Lauv	0	11	1 146	990		2 147
Sum:	4 685	38 045	42 215	990	949	86 884

Volum (kbm)



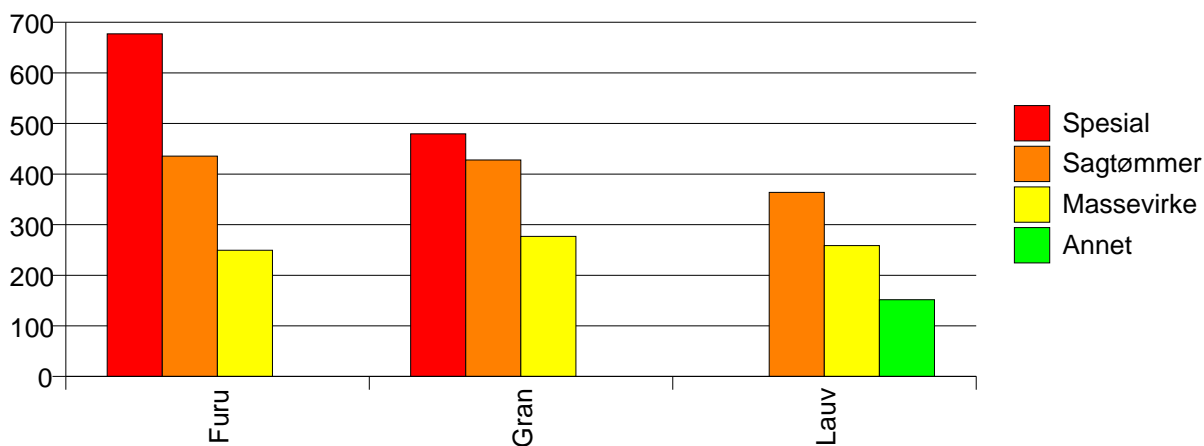
Volum (prosentfordelt)



Gjennomsnittspris 2008 (kr/kbm)

	Spesial	Sagtømmer	Massevirke	Annet	Vrak	Snitt
Furu	677	436	249		0	371
Gran	479	428	277		0	347
Lauv	#DIV/0	364	259	152		210
Snitt	558	430	269	152	0	351

Gjennomsnittspris (kr/kbm)

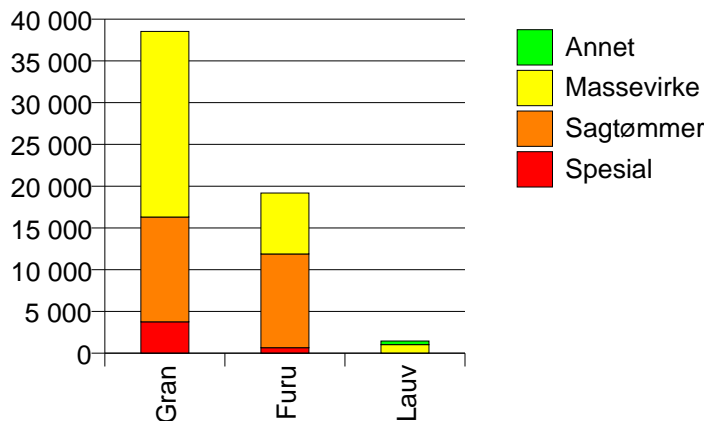


624 ØVRE EIKER

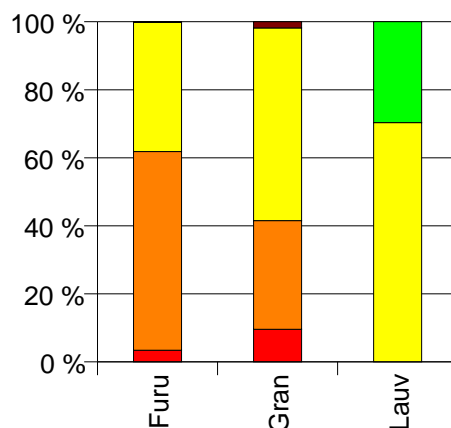
Volum 2008 (kbm)

	Spesial	Sagtømmer	Massevirke	Annet	Vrak	Sum:
Furu	661	11 219	7 299		34	19 213
Gran	3 757	12 542	22 230		713	39 242
Lauv			1 029	434		1 463
Sum:	4 418	23 761	30 558	434	747	59 918

Volum (kbm)



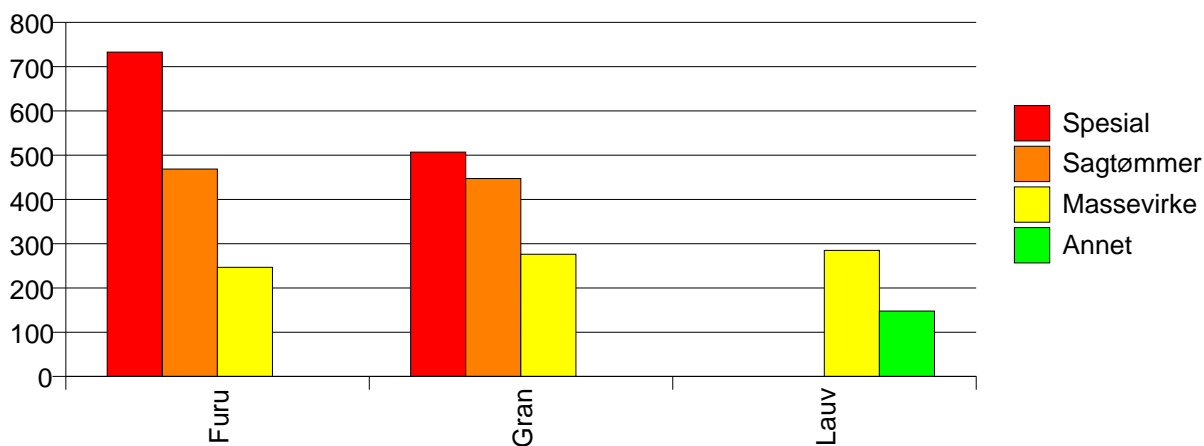
Volum (prosentfordelt)



Gjennomsnittspris 2008 (kr/kbm)

	Spesial	Sagtømmer	Massevirke	Annet	Vrak	Snitt
Furu	733	468	247		0	392
Gran	507	447	276		0	348
Lauv			285	148		244
Snitt	540	457	269	148	0	360

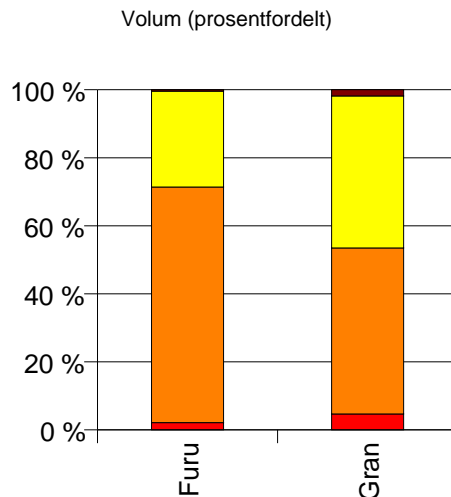
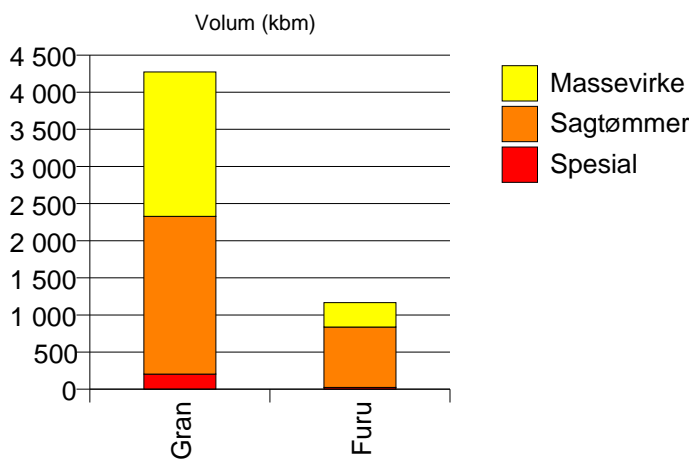
Gjennomsnittspris (kr/kbm)



625 NEDRE EIKER

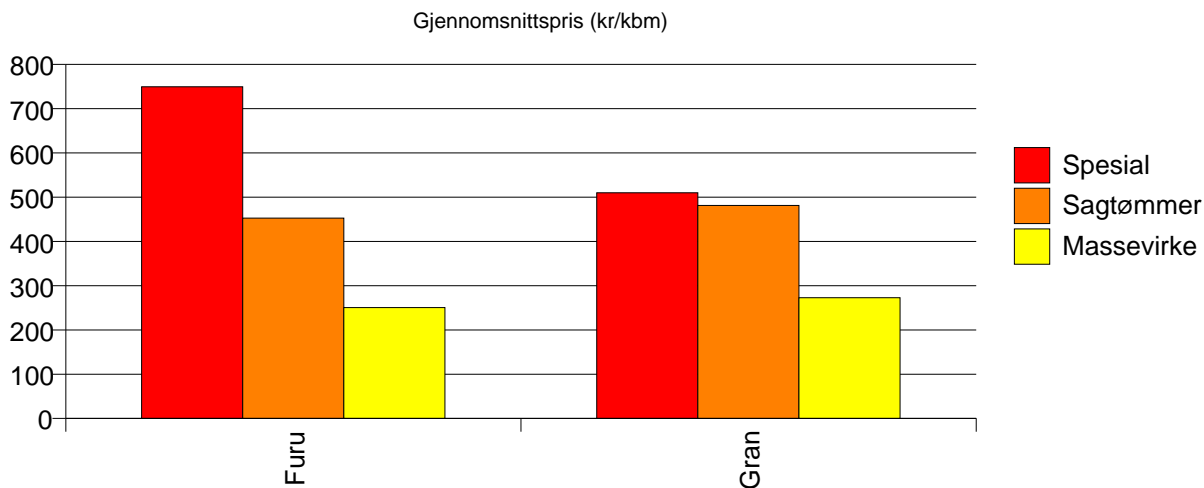
Volum 2008 (kbm)

	Spesial	Sagtømmer	Massevirke	Vrak	Sum:
Furu	25	812	330	5	1 172
Gran	203	2 125	1 944	79	4 351
Sum:	228	2 937	2 274	84	5 523



Gjennomsnittspris 2008 (kr/kbm)

	Spesial	Sagtømmer	Massevirke	Vrak	Snitt
Furu	749	453	250	0	400
Gran	510	481	273	0	381
Snitt	536	473	269	0	385

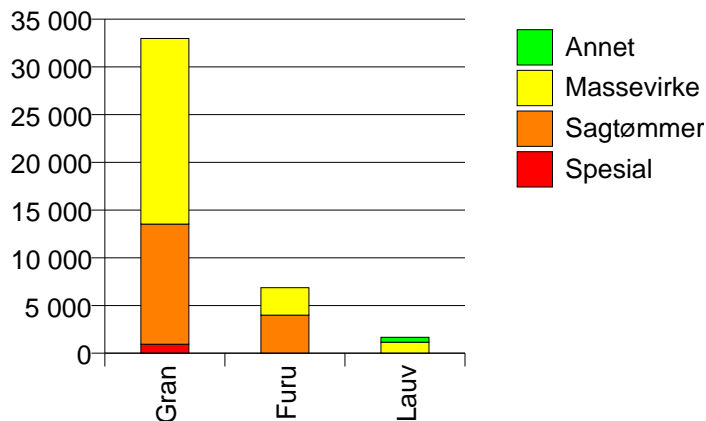


626 LIER

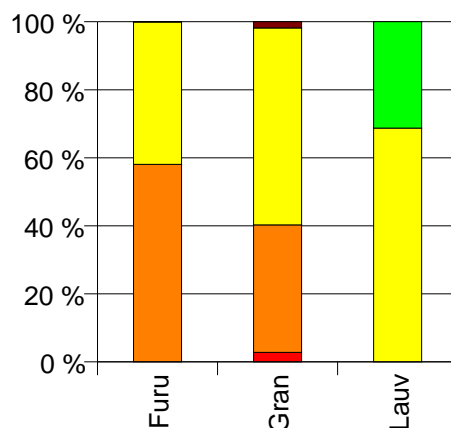
Volum 2008 (kbm)

	Spesial	Sagtømmer	Massevirke	Annet	Vrak	Sum:
Furu	0	3 992	2 876		4	6 872
Gran	942	12 579	19 446		618	33 585
Lauv			1 150	523		1 673
Sum:	942	16 571	23 472	523	622	42 130

Volum (kbm)



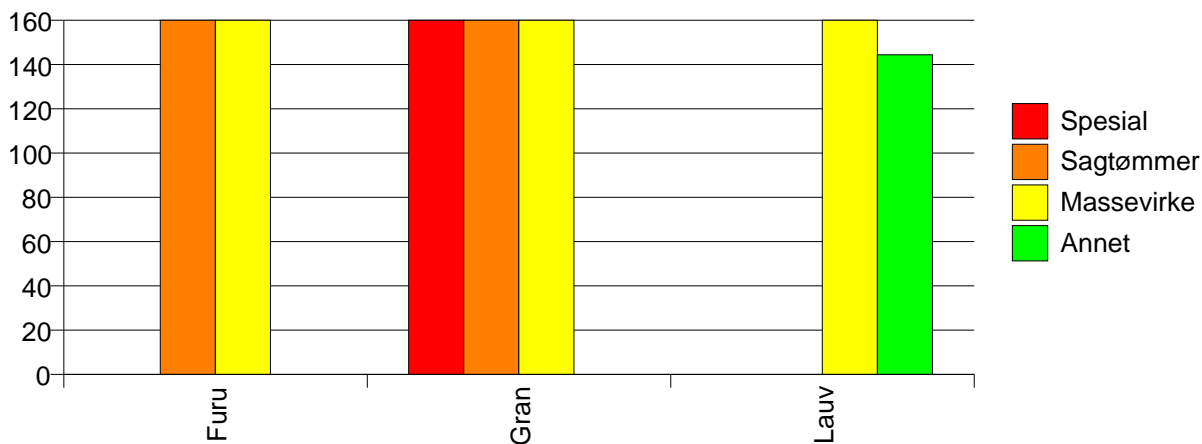
Volum (prosentfordelt)



Gjennomsnittspris 2008 (kr/kbm)

	Spesial	Sagtømmer	Massevirke	Annet	Vrak	Snitt
Furu	#DIV/0	442	252		0	362
Gran	505	422	276		0	332
Lauv			284	144		240
Snitt	506	427	273	144	0	333

Gjennomsnittspris (kr/kbm)

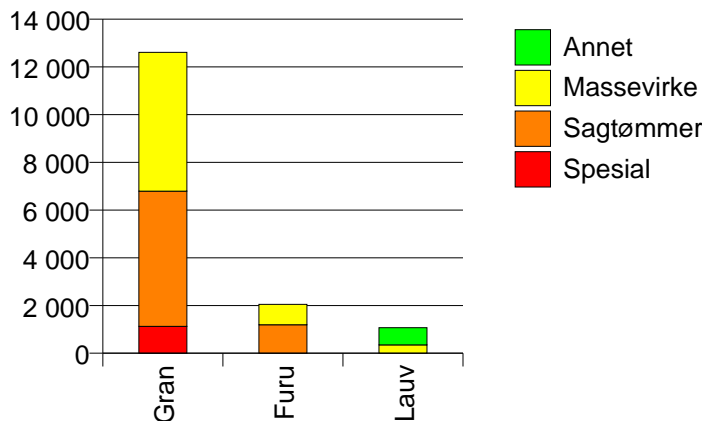


627 RØYKEN

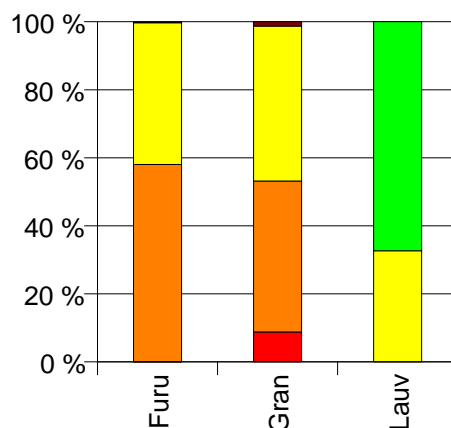
Volum 2008 (kbm)

	Spesial	Sagtømmer	Massevirke	Annet	Vrak	Sum:
Furu	1	1 190	855		6	2 052
Gran	1 123	5 666	5 818		163	12 770
Lauv			350	721		1 071
Sum:	1 124	6 856	7 023	721	169	15 893

Volum (kbm)



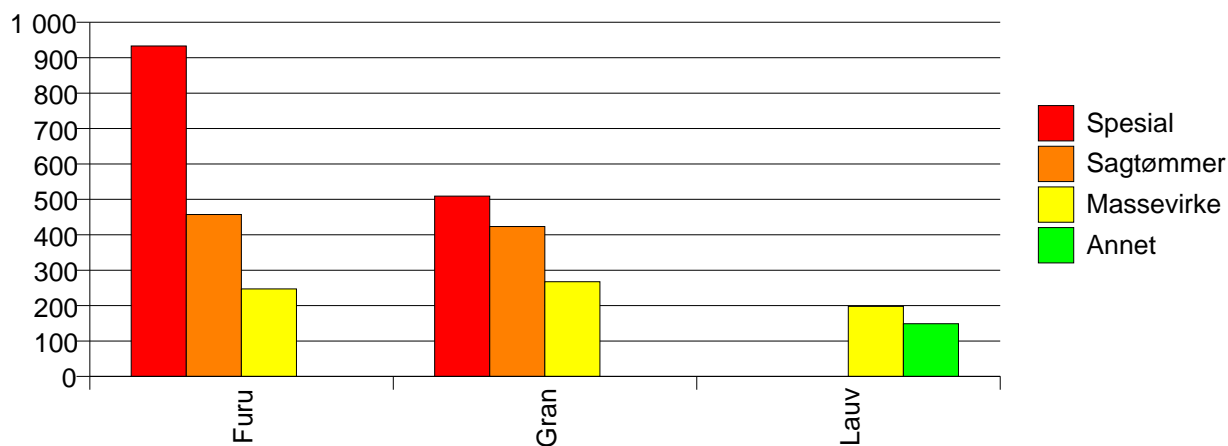
Volum (prosentfordelt)



Gjennomsnittspris 2008 (kr/kbm)

	Spesial	Sagtømmer	Massevirke	Annet	Vrak	Snitt
Furu	933	457	247		0	369
Gran	509	423	267		0	355
Lauv			198	149		165
Snitt	509	429	262	149	0	344

Gjennomsnittspris (kr/kbm)

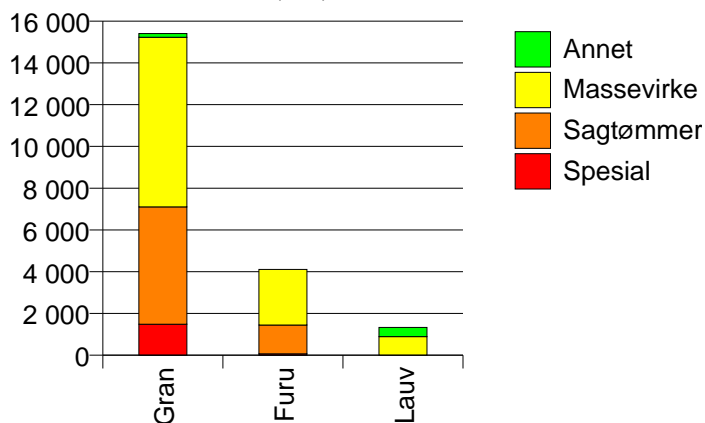


628 HURUM

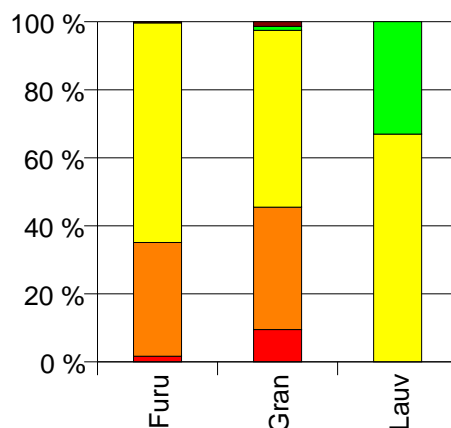
Volum 2008 (kbm)

	Spesial	Sagtømmer	Massevirke	Annet	Vrak	Sum:
Furu	68	1 379	2 663		14	4 124
Gran	1 482	5 622	8 119	182	210	15 615
Lauv			893	440		1 333
Sum:	1 550	7 001	11 675	622	224	21 072

Volum (kbm)



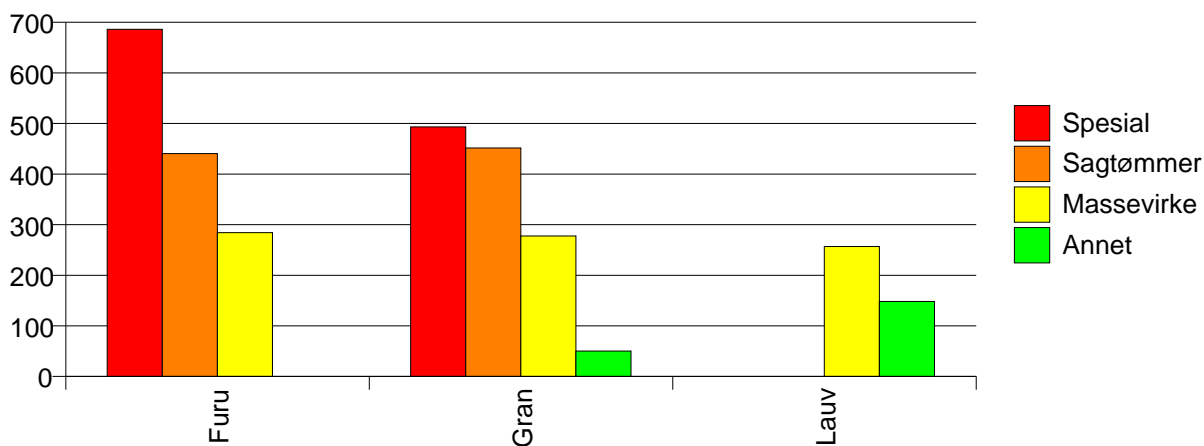
Volum (prosentfordelt)



Gjennomsnittspris 2008 (kr/kbm)

	Spesial	Sagtømmer	Massevirke	Annet	Vrak	Snitt
Furu	686	441	284		0	342
Gran	493	452	278	50	0	354
Lauv			257	148		221
Snitt	502	449	278	119	0	343

Gjennomsnittspris (kr/kbm)

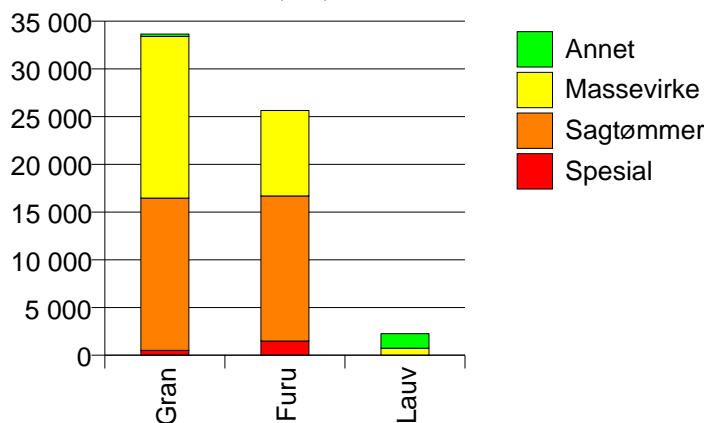


631 FLESBERG

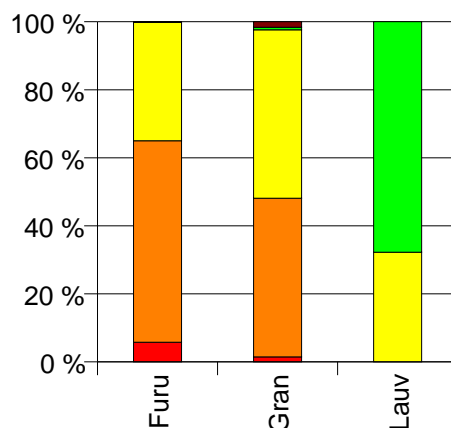
Volum 2008 (kbm)

	Spesial	Sagtømmer	Massevirke	Annet	Vrak	Sum:
Furu	1 482	15 207	8 946		41	25 676
Gran	507	15 955	16 930	244	563	34 199
Lauv			728	1 531		2 259
Sum:	1 989	31 162	26 604	1 775	604	62 134

Volum (kbm)



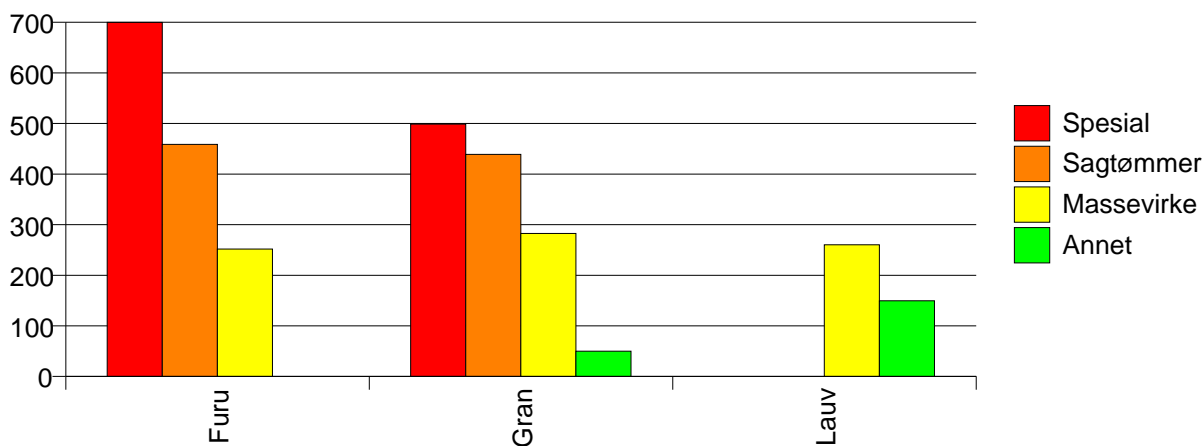
Volum (prosentfordelt)



Gjennomsnittspris 2008 (kr/kbm)

	Spesial	Sagtømmer	Massevirke	Annet	Vrak	Snitt
Furu	700	459	252		0	400
Gran	499	439	283	50	0	352
Lauv			260	150		185
Snitt	649	449	272	136	0	366

Gjennomsnittspris (kr/kbm)

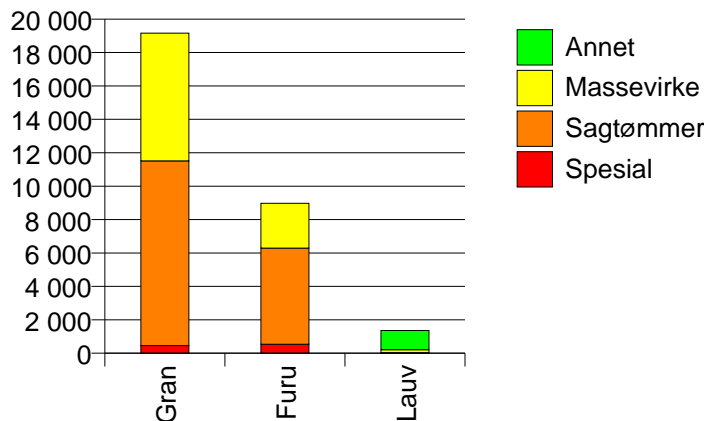


632 ROLLAG

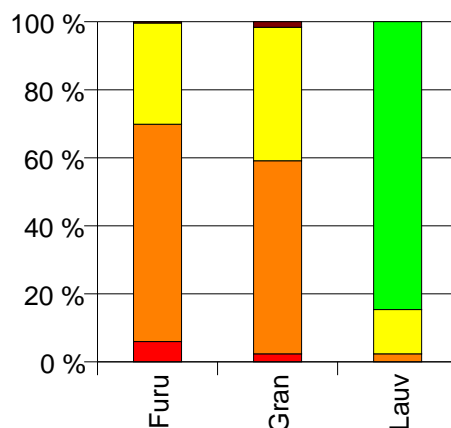
Volum 2008 (kbm)

	Spesial	Sagtømmer	Massevirke	Annet	Vrak	Sum:
Furu	539	5 756	2 683		32	9 010
Gran	460	11 053	7 642		314	19 469
Lauv		32	177	1 148		1 357
Sum:	999	16 841	10 502	1 148	346	29 836

Volum (kbm)



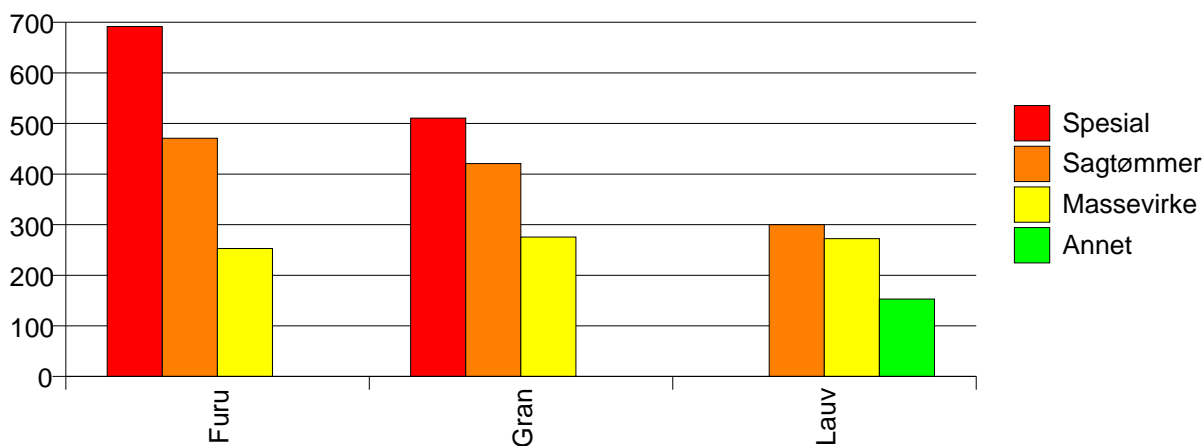
Volum (prosentfordelt)



Gjennomsnittspris 2008 (kr/kbm)

	Spesial	Sagtømmer	Massevirke	Annet	Vrak	Snitt
Furu	692	471	253		0	418
Gran	511	421	276		0	359
Lauv		300	272	153		172
Snitt	608	438	270	153	0	368

Gjennomsnittspris (kr/kbm)

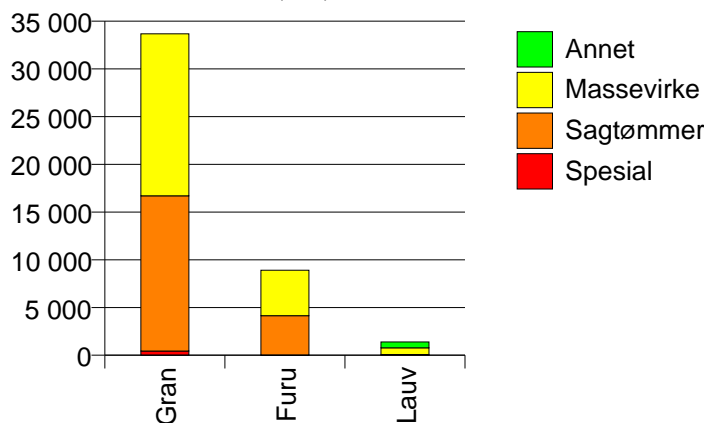


633 NORE OG UVDAL

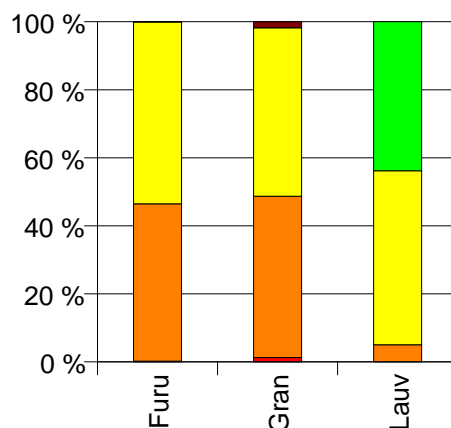
Volum 2008 (kbm)

	Spesial	Sagtømmer	Massevirke	Annet	Vrak	Sum:
Furu	18	4 121	4 765		5	8 909
Gran	440	16 253	16 980		611	34 284
Lauv		70	711	609		1 390
Sum:	458	20 444	22 456	609	616	44 583

Volum (kbm)



Volum (prosentfordelt)



Gjennomsnittspris 2008 (kr/kbm)

	Spesial	Sagtømmer	Massevirke	Annet	Vrak	Snitt
Furu	718	455	252		0	347
Gran	471	435	273		0	347
Lauv		236	266	153		215
Snitt	481	438	268	153	0	343

Gjennomsnittspris (kr/kbm)

