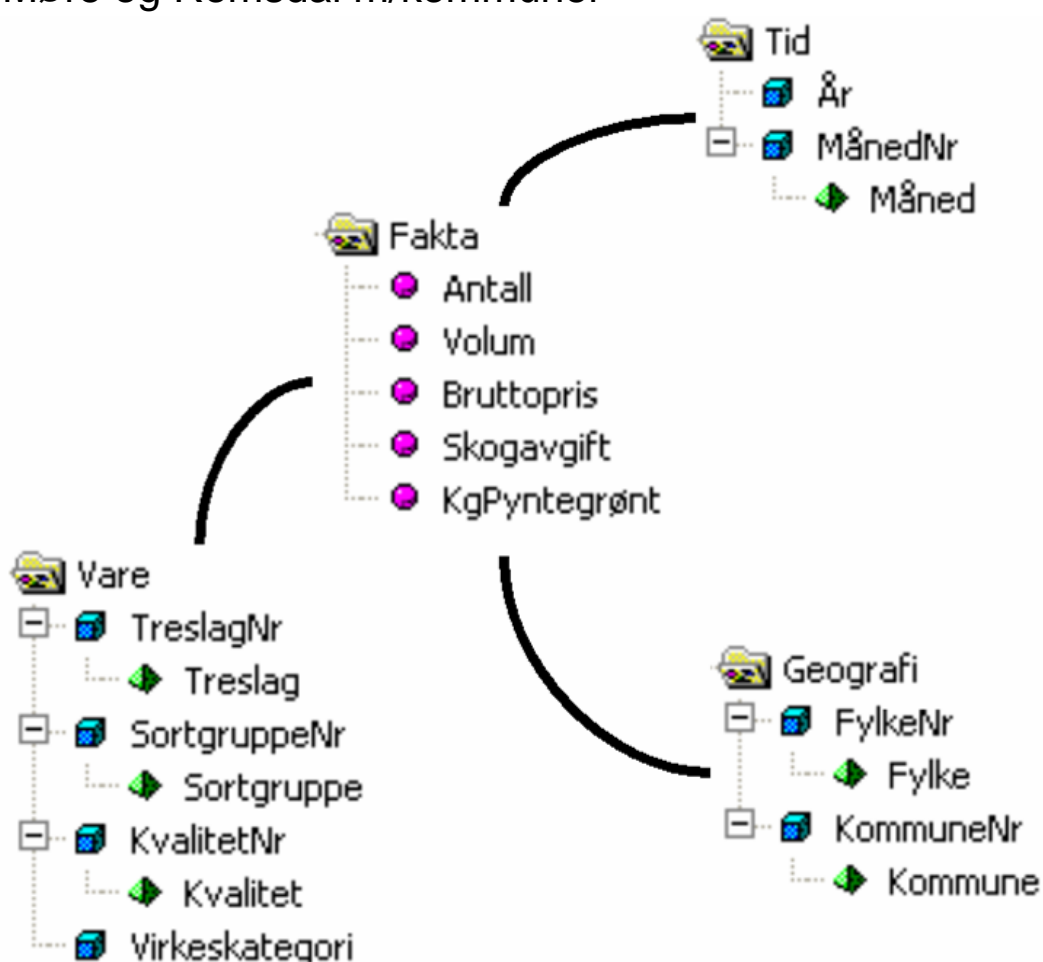


Virkestatistikk fra SKOG-DATA AS

Møre og Romsdal m/kommuner



Dataene i rapporten er hentet fra databasen som inneholder virkesdata med tilhørende innbetalinger av skogavgift. Rapporten er laget med Business Objects, som er sluttbrukerverktøyet i Skog-Data sine nye datavarehus-løsninger. Business Objects er ett meget sterkt rapportverktøy som kan presentere store mengder data effektivt.

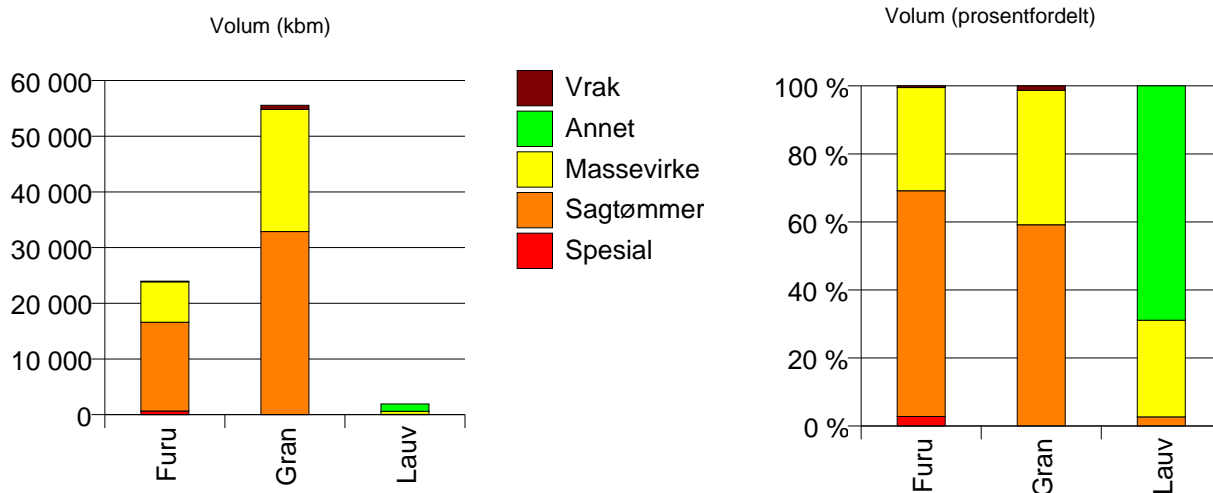
Rapportene kan lastes ned fra www.skogdata.no/statistikk

For mer informasjon, kontakt: tabh@skogdata.no

Møre og Romsdal

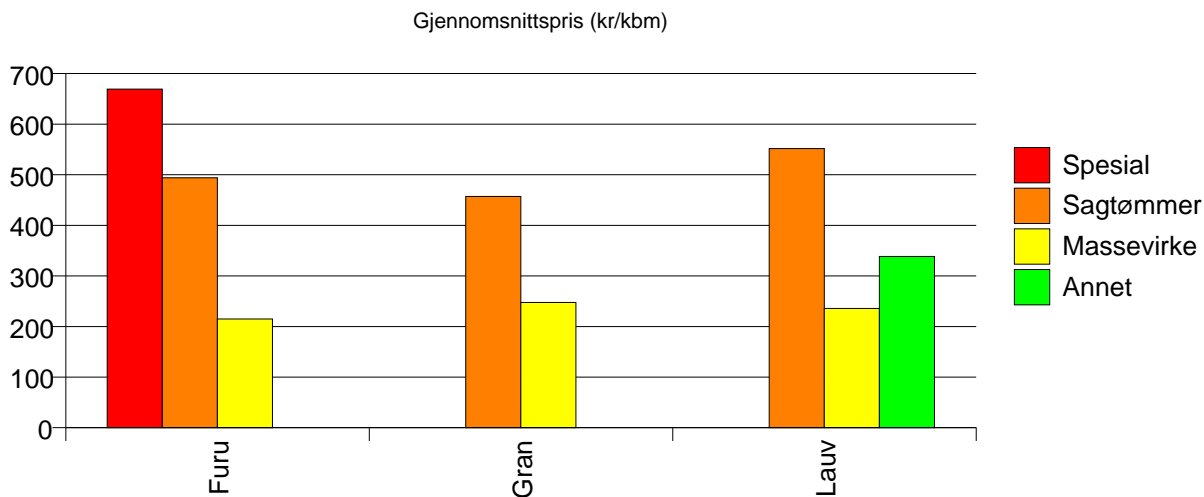
Volum 2007

	Spesial	Sagtømmer	Massevirke	Annet	Vrak	Sum:
Furu	669	15 924	7 272		120	23 985
Gran		32 887	21 938		740	55 565
Lauv		52	549	1 332		1 933
Sum:	669	48 863	29 759	1 332	860	81 483



Gjennomsnittspris 2007 (kr/kbm)

	Spesial	Sagtømmer	Massevirke	Annet	Vrak	Snitt:
Furu	669	494	215		0	412
Gran		457	248		0	368
Lauv		552	236	339		315
Snitt:	669	469	239	339	0	380

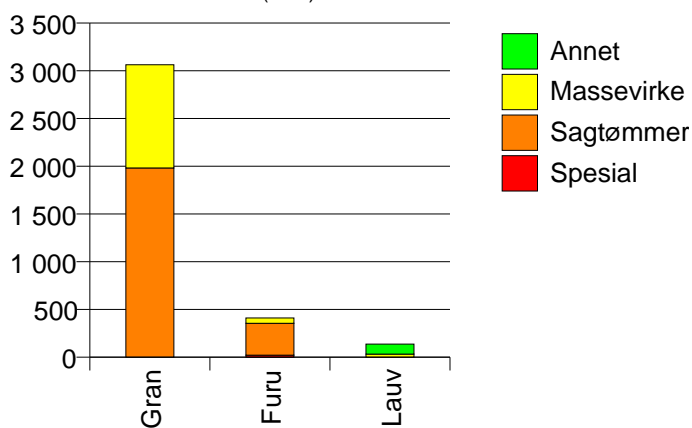


1539 RAUMA

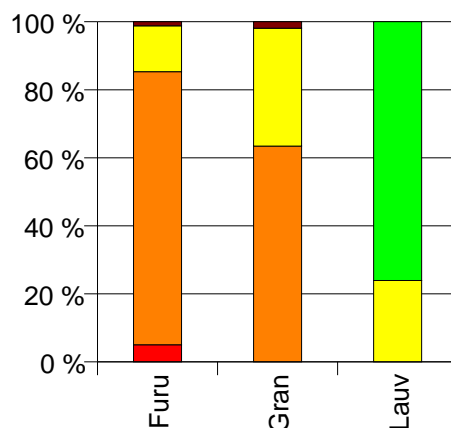
Volum 2007 (kbm)

	Spesial	Sagtømmer	Massevirke	Annet	Vrak	Sum:
Furu	21	334	56		5	416
Gran		1 982	1 082		59	3 123
Lauv			33	105		138
Sum:	21	2 316	1 171	105	64	3 677

Volum (kbm)



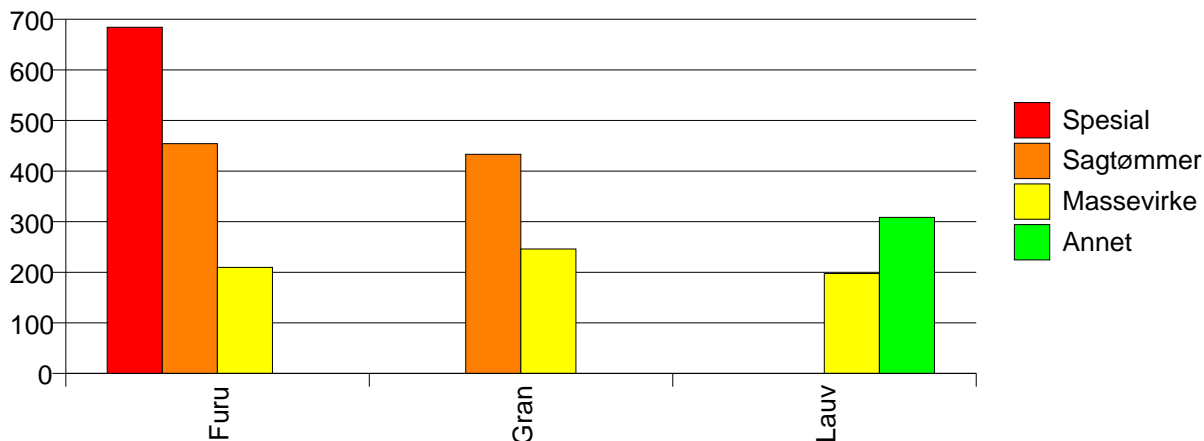
Volum (prosentfordelt)



Gjennomsnittspris 2007 (kr/kbm)

	Spesial	Sagtømmer	Massevirke	Annet	Vrak	Snitt
Furu	684	454	210		0	427
Gran		433	246		0	360
Lauv			197	309		282
Snitt	684	436	243	309	0	365

Gjennomsnittspris (kr/kbm)

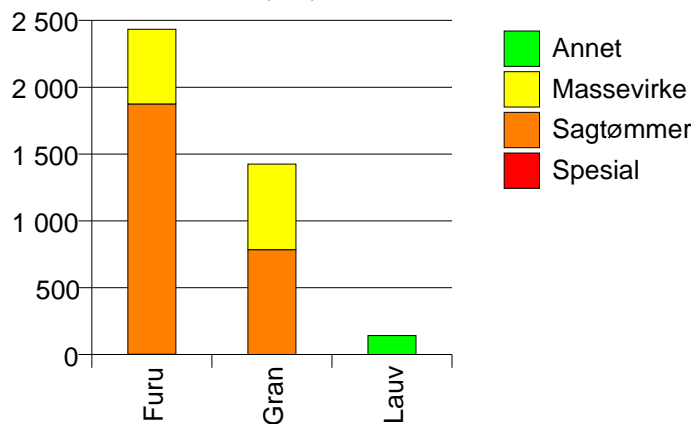


1543 NESSET

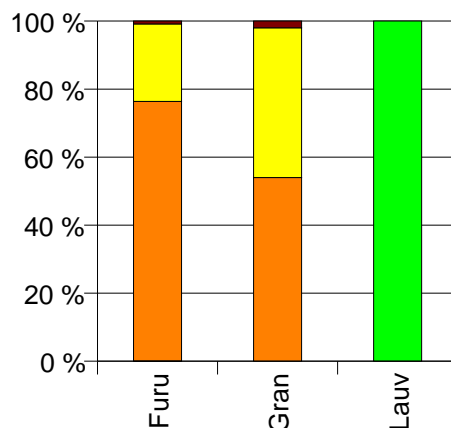
Volum 2007 (kbm)

	Spesial	Sagtømmer	Massevirke	Annet	Vrak	Sum:
Furu	2	1 873	559		21	2 455
Gran		785	640		29	1 454
Lauv				142		142
Sum:	2	2 658	1 199	142	50	4 051

Volum (kbm)



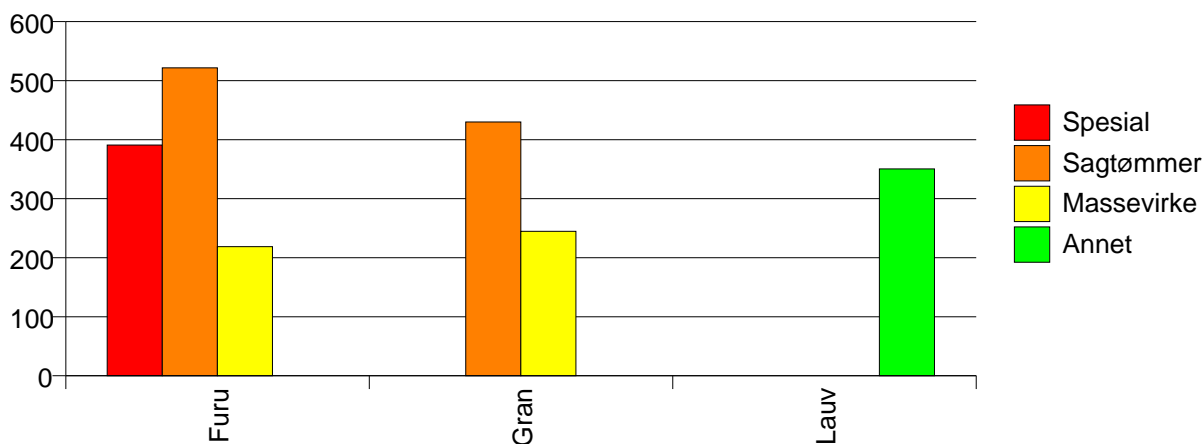
Volum (prosentfordelt)



Gjennomsnittspris 2007 (kr/kbm)

	Spesial	Sagtømmer	Massevirke	Annet	Vrak	Snitt
Furu	391	522	219		0	448
Gran		430	245		0	340
Lauv				351		351
Snitt	391	495	233	351	0	406

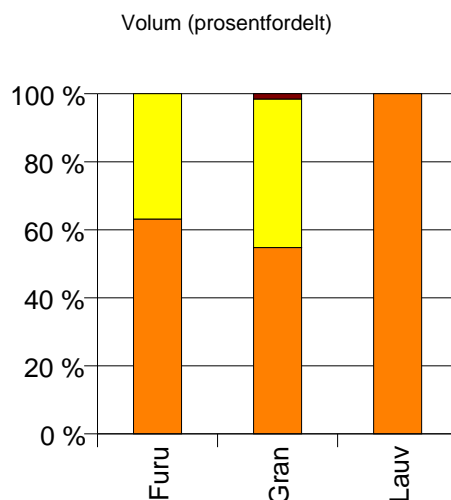
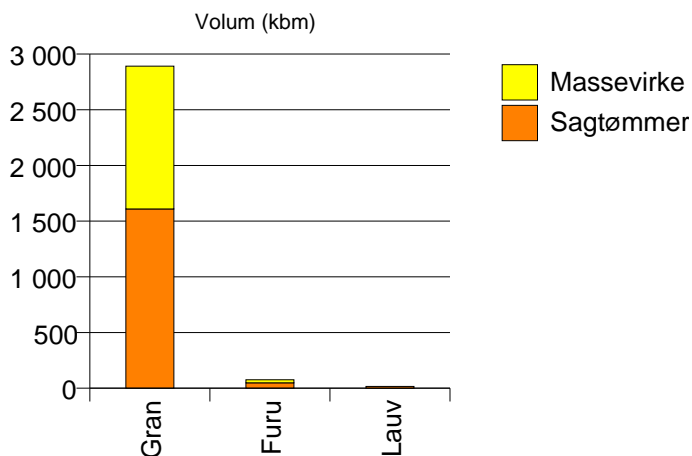
Gjennomsnittspris (kr/kbm)



1551 EIDE

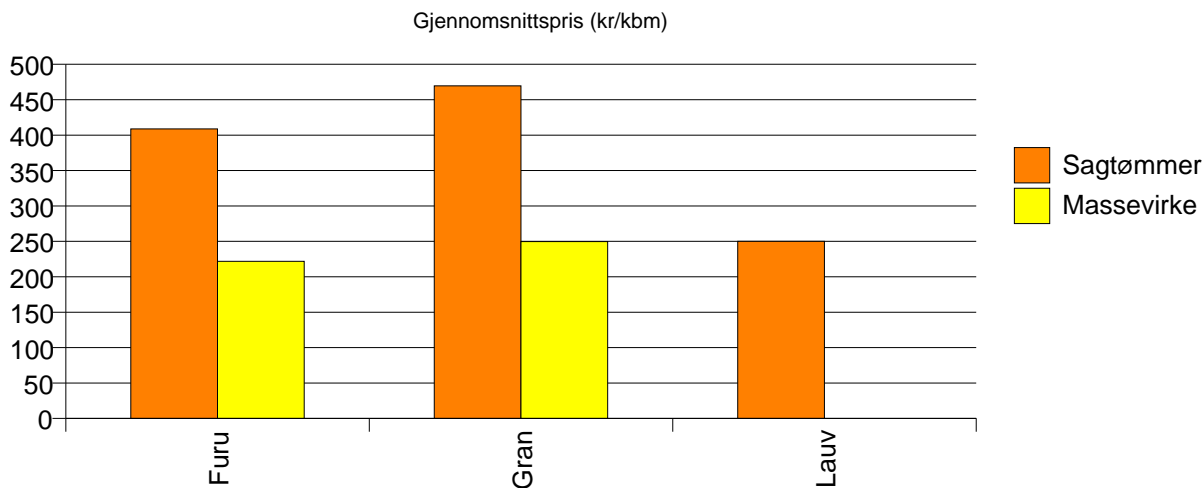
Volum 2007 (kbm)

	Sagtømmer	Massevirke	Vrak	Sum:
Furu	48	28		76
Gran	1 609	1 283	46	2 938
Lauv	16			16
Sum:	1 673	1 311	46	3 030



Gjennomsnittspris 2007 (kr/kbm)

	Sagtømmer	Massevirke	Vrak	Snitt
Furu	409	222		340
Gran	470	250	0	366
Lauv	250			250
Snitt	466	249	0	365

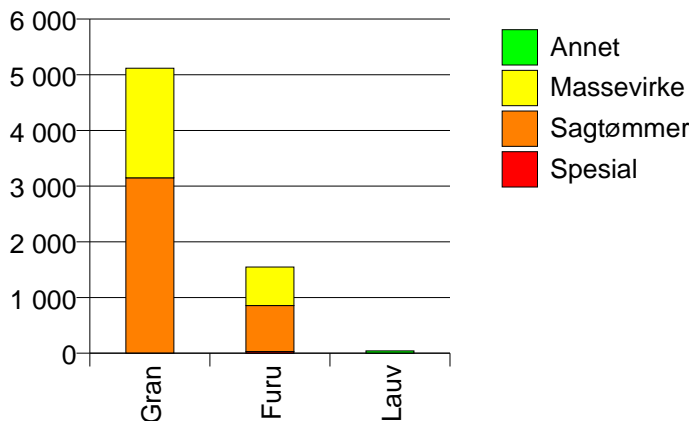


1557 GJEMNES

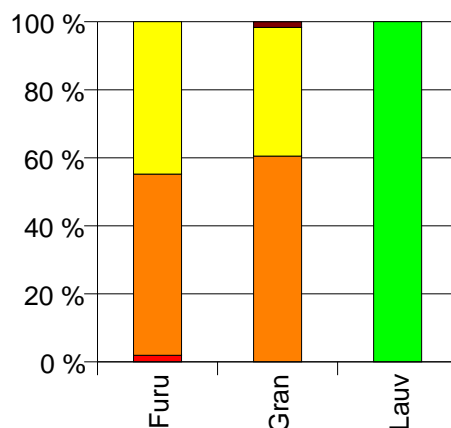
Volum 2007 (kbm)

	Spesial	Sagtømmer	Massevirke	Annet	Vrak	Sum:
Furu	30	825	693			1 548
Gran		3 149	1 969		87	5 205
Lauv				41		41
Sum:	30	3 974	2 662	41	87	6 794

Volum (kbm)



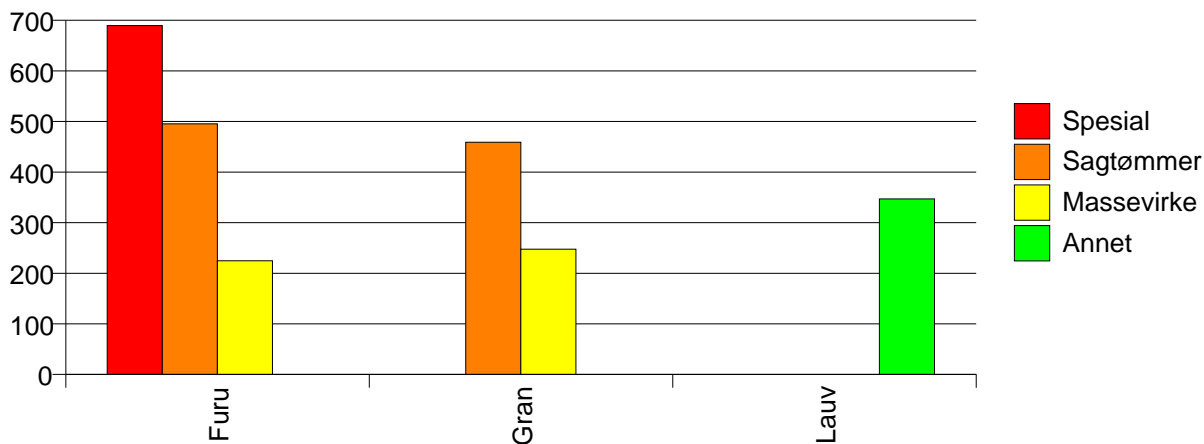
Volum (prosentfordelt)



Gjennomsnittspris 2007 (kr/kbm)

	Spesial	Sagtømmer	Massevirke	Annet	Vrak	Snitt
Furu	690	495	225			378
Gran		459	248		0	371
Lauv				347		347
Snitt	690	466	242	347	0	373

Gjennomsnittspris (kr/kbm)

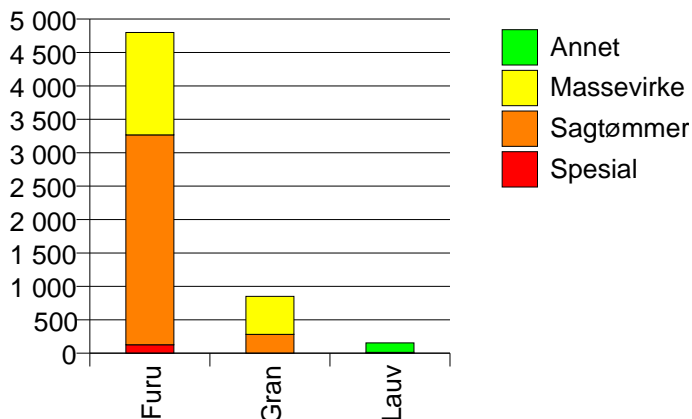


1560 TINGVOLL

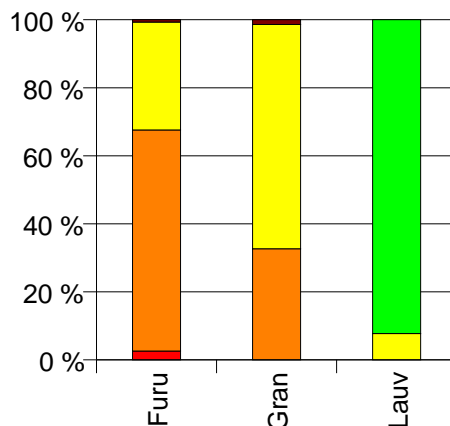
Volum 2007 (kbm)

	Spesial	Sagtømmer	Massevirke	Annet	Vrak	Sum:
Furu	126	3 141	1 532		33	4 832
Gran		282	569		12	863
Lauv			12	143		155
Sum:	126	3 423	2 113	143	45	5 850

Volum (kbm)



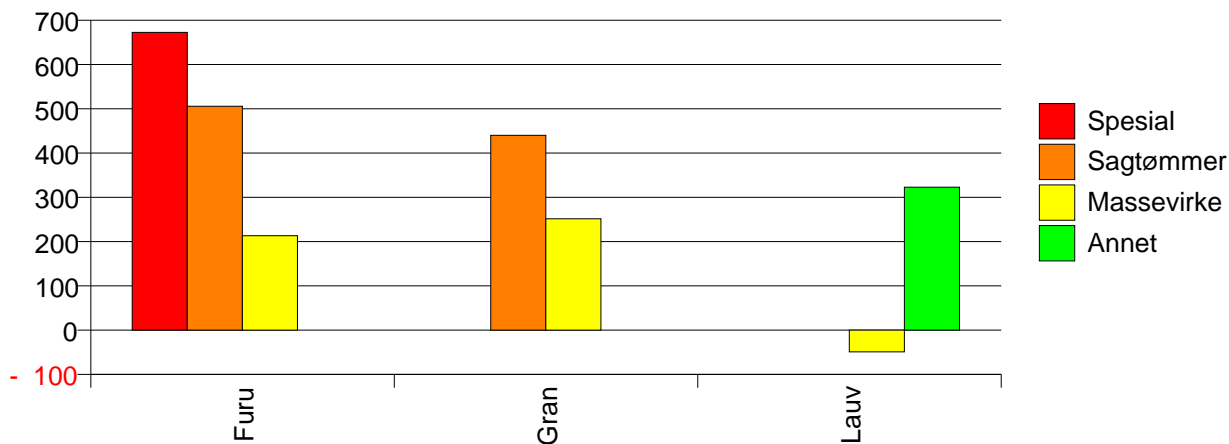
Volum (prosentfordelt)



Gjennomsnittspris 2007 (kr/kbm)

	Spesial	Sagtømmer	Massevirke	Annet	Vrak	Snitt
Furu	673	506	213		0	414
Gran		440	252		0	310
Lauv			-49	323		294
Snitt	673	500	222	323	0	395

Gjennomsnittspris (kr/kbm)

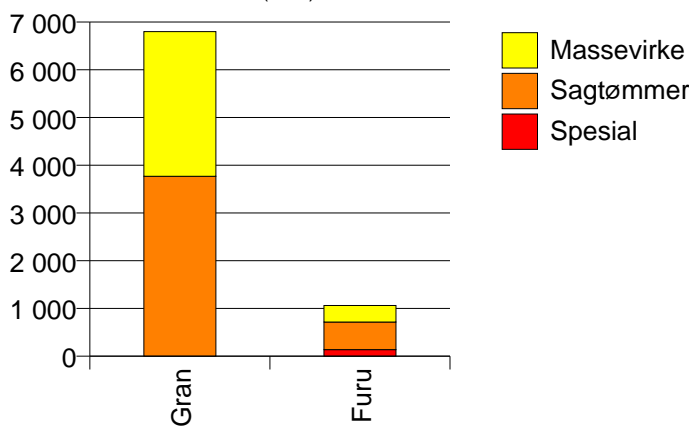


1563 SUNNDAL

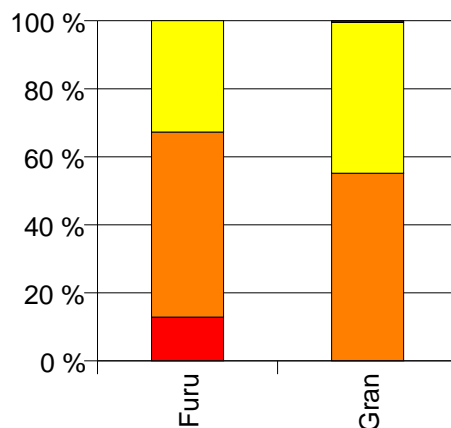
Volum 2007 (kbm)

	Spesial	Sagtømmer	Massevirke	Vrak	Sum:
Furu	137	579	348		1 064
Gran		3 770	3 029	33	6 832
Sum:	137	4 349	3 377	33	7 896

Volum (kbm)



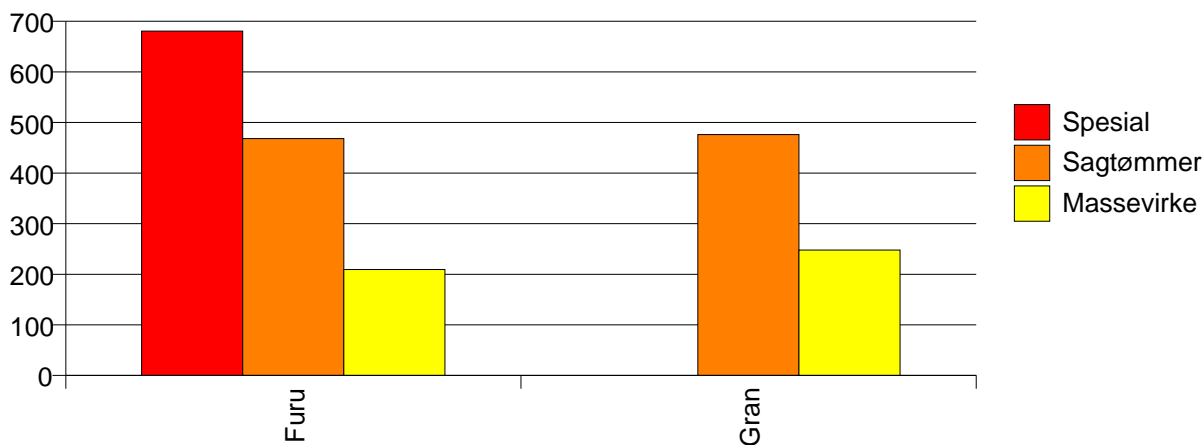
Volum (prosentfordelt)



Gjennomsnittspris 2007 (kr/kbm)

	Spesial	Sagtømmer	Massevirke	Vrak	Snitt
Furu	681	468	209		411
Gran		476	248	0	373
Snitt	681	475	244	0	378

Gjennomsnittspris (kr/kbm)

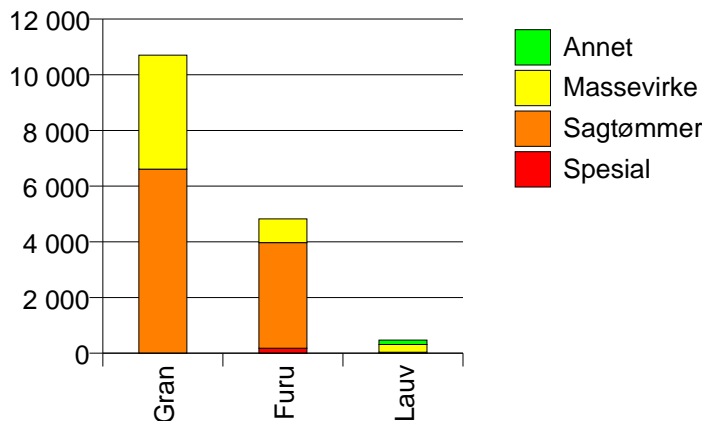


1566 SURNADAL

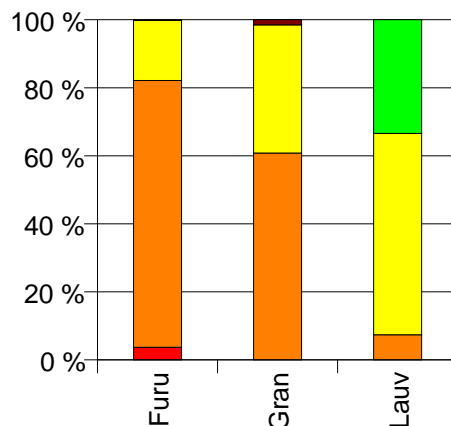
Volum 2007 (kbm)

	Spesial	Sagtømmer	Massevirke	Annet	Vrak	Sum:
Furu	180	3 792	853		11	4 836
Gran		6 612	4 093		165	10 870
Lauv		35	280	158		473
Sum:	180	10 439	5 226	158	176	16 179

Volum (kbm)



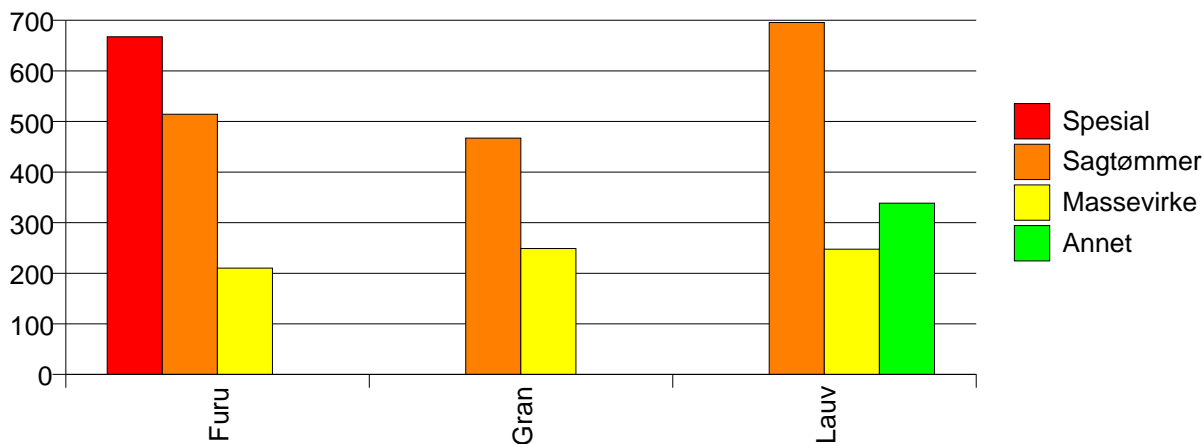
Volum (prosentfordelt)



Gjennomsnittspris 2007 (kr/kbm)

	Spesial	Sagtømmer	Massevirke	Annet	Vrak	Snitt
Furu	667	514	210		0	465
Gran		467	249		0	378
Lauv		696	248	338		311
Snitt	667	485	243	338	0	402

Gjennomsnittspris (kr/kbm)

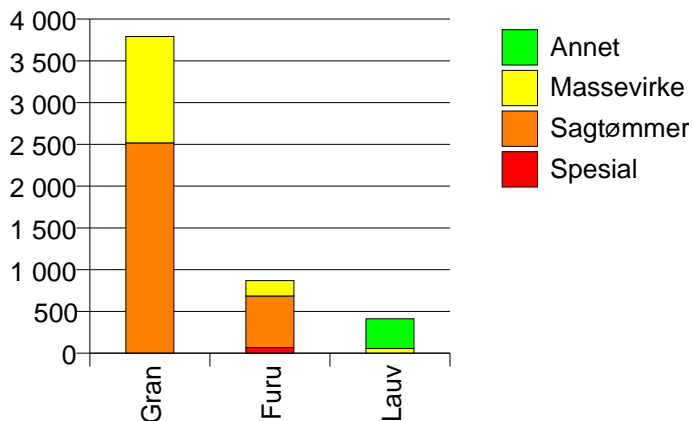


1567 RINDAL

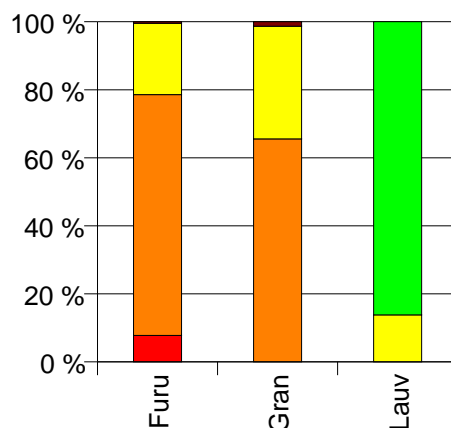
Volum 2007 (kbm)

	Spesial	Sagtømmer	Massevirke	Annet	Vrak	Sum:
Furu	68	618	183		4	873
Gran		2 518	1 273		50	3 841
Lauv			57	356		413
Sum:	68	3 136	1 513	356	54	5 127

Volum (kbm)



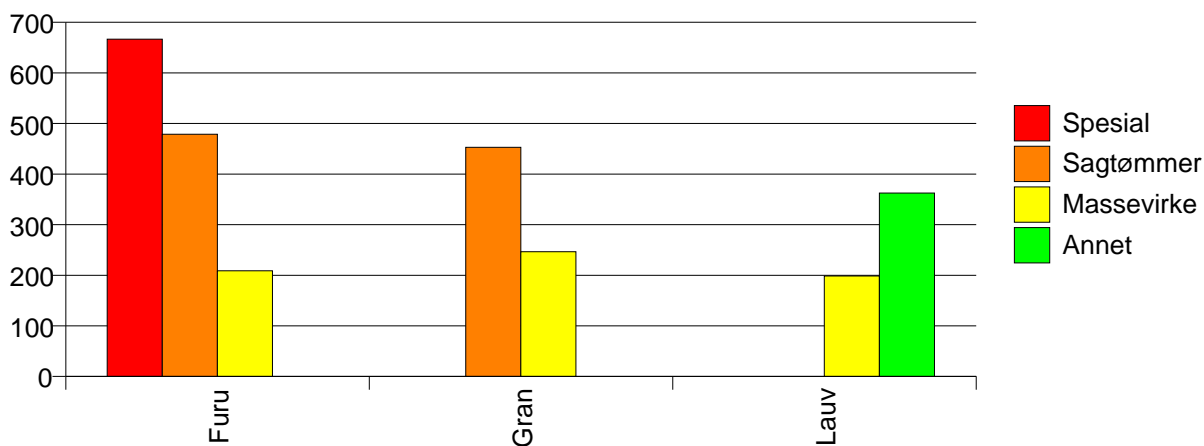
Volum (prosentfordelt)



Gjennomsnittspris 2007 (kr/kbm)

	Spesial	Sagtømmer	Massevirke	Annet	Vrak	Snitt
Furu	667	479	209		0	435
Gran		453	246		0	379
Lauv			199	363		340
Snitt	667	458	240	363	0	385

Gjennomsnittspris (kr/kbm)

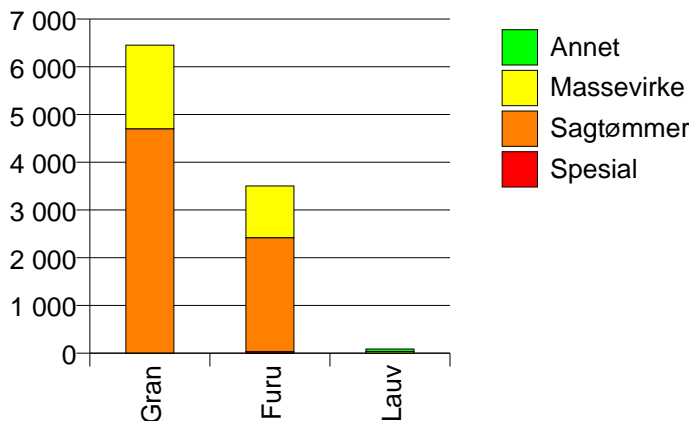


1571 HALSA

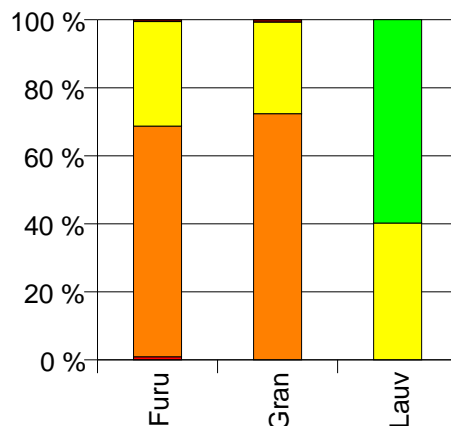
Volum 2007 (kbm)

	Spesial	Sagtømmer	Massevirke	Annet	Vrak	Sum:
Furu	33	2 388	1 083		18	3 522
Gran		4 702	1 751		44	6 497
Lauv			35	52		87
Sum:	33	7 090	2 869	52	62	10 106

Volum (kbm)



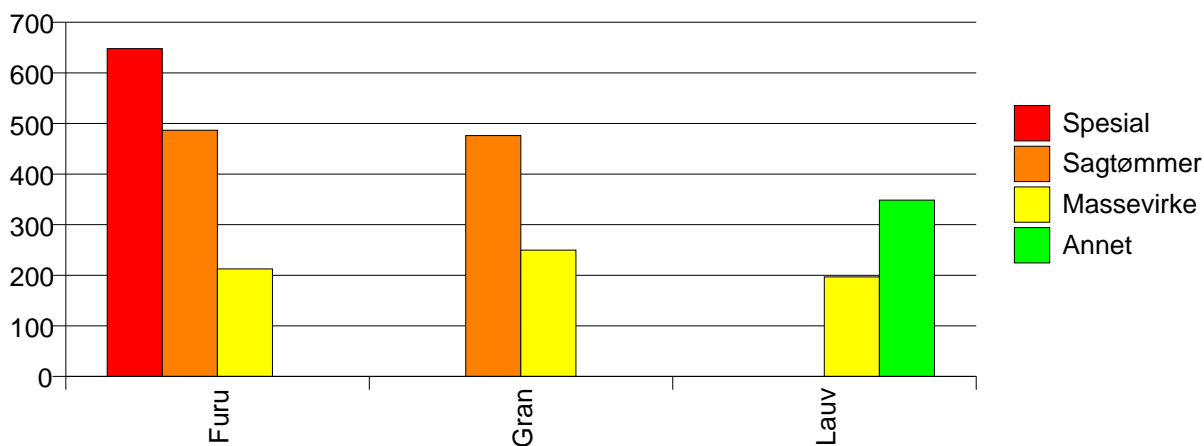
Volum (prosentfordelt)



Gjennomsnittspris 2007 (kr/kbm)

	Spesial	Sagtømmer	Massevirke	Annet	Vrak	Snitt
Furu	648	487	213		0	401
Gran		476	250		0	412
Lauv			197	349		287
Snitt	648	480	235	349	0	407

Gjennomsnittspris (kr/kbm)

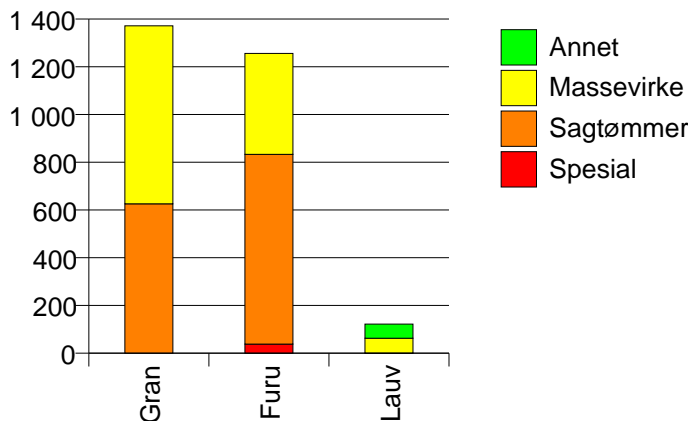


1502 MOLDE

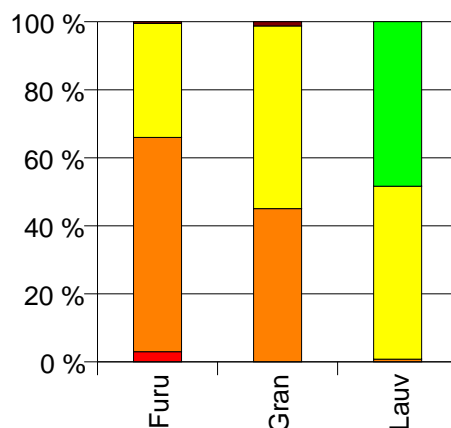
Volum 2007 (kbm)

	Spesial	Sagtømmer	Massevirke	Annet	Vrak	Sum:
Furu	38	795	423		6	1 262
Gran		626	746		17	1 389
Lauv		1	62	59		122
Sum:	38	1 422	1 231	59	23	2 773

Volum (kbm)



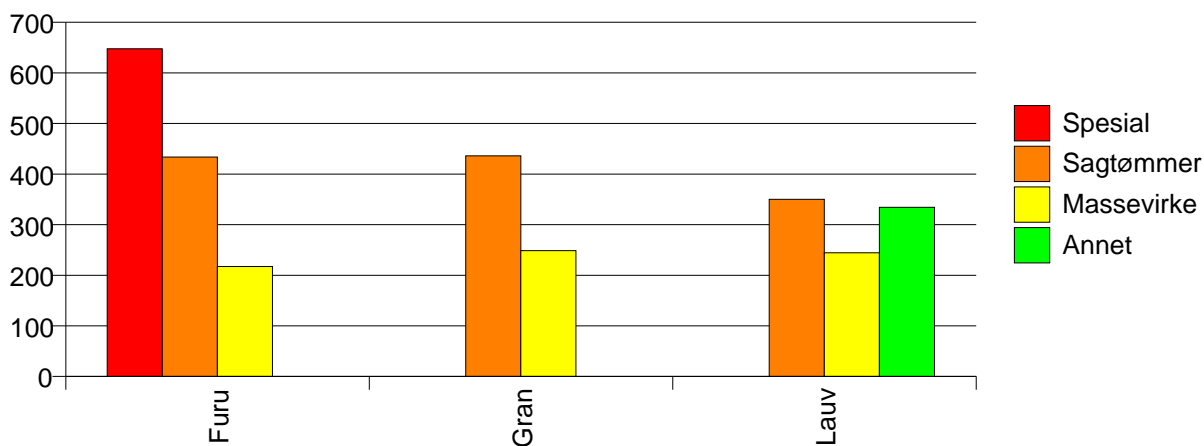
Volum (prosentfordelt)



Gjennomsnittspris 2007 (kr/kbm)

	Spesial	Sagtømmer	Massevirke	Annet	Vrak	Snitt
Furu	648	434	217		0	366
Gran		436	249		0	330
Lauv		350	244	334		289
Snitt	648	435	238	334	0	344

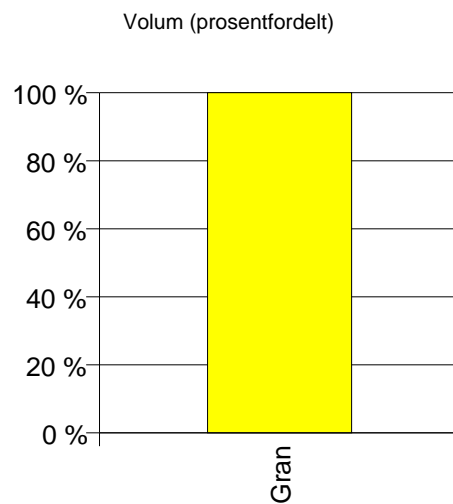
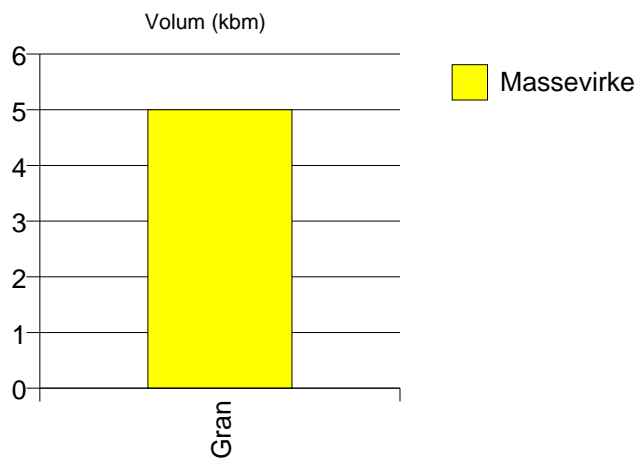
Gjennomsnittspris (kr/kbm)



1511 VANYLVEN

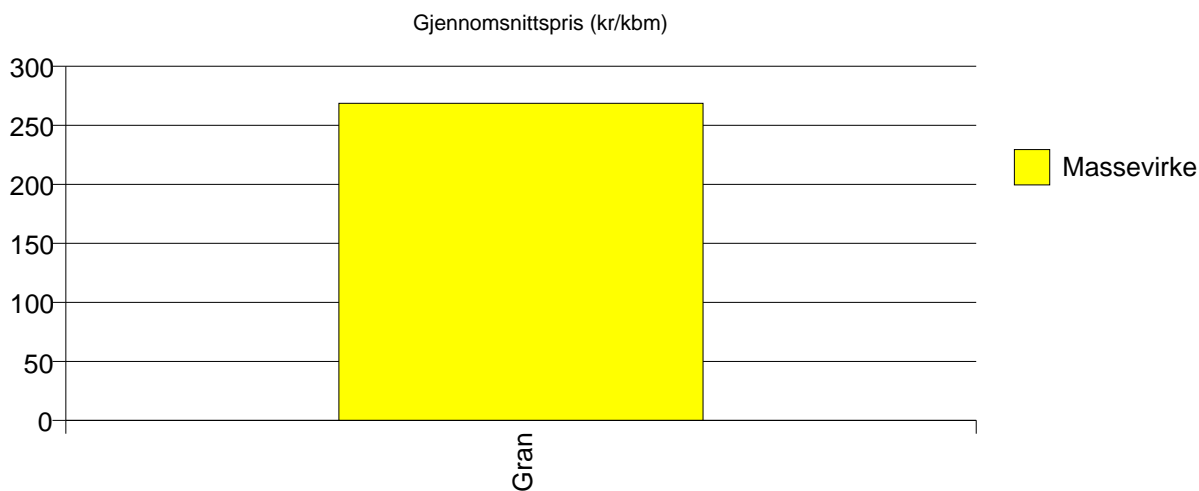
Volum 2007 (kbm)

	Massevirke	Sum:
Gran	5	5
Sum:	5	5



Gjennomsnittspris 2007 (kr/kbm)

Gran	269	269
Snitt	269	269

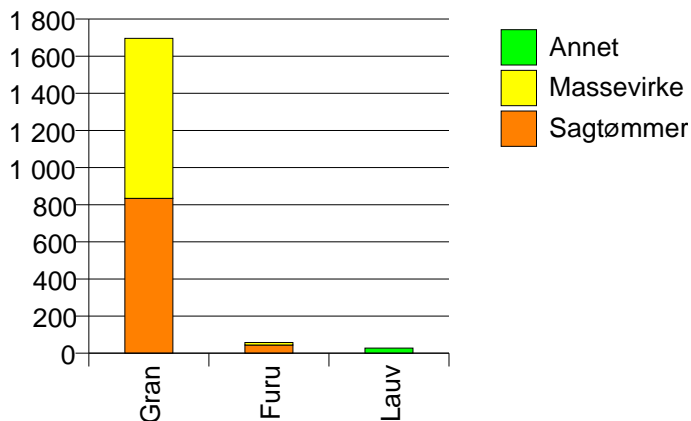


1519 VOLDA

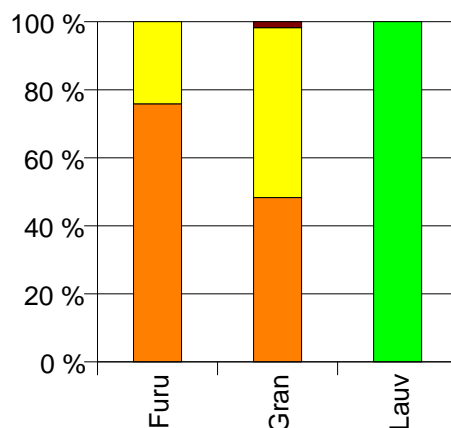
Volum 2007 (kbm)

	Sagtømmer	Massevirke	Annet	Vrak	Sum:
Furu	44	14			58
Gran	834	862		30	1 726
Lauv			28		28
Sum:	878	876	28	30	1 812

Volum (kbm)



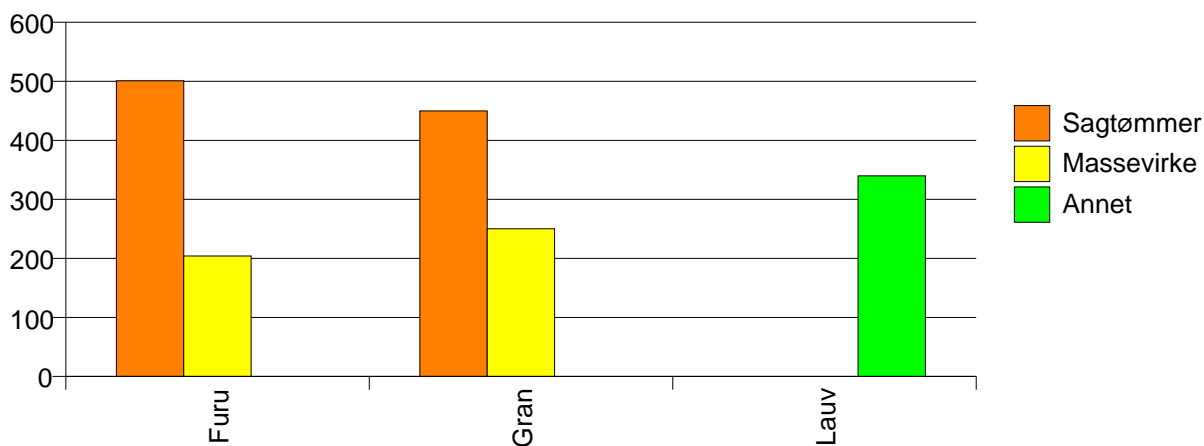
Volum (prosentfordelt)



Gjennomsnittspris 2007 (kr/kbm)

	Sagtømmer	Massevirke	Annet	Vrak	Snitt
Furu	501	204			429
Gran	450	250		0	342
Lauv			340		340
Snitt	453	249	340	0	345

Gjennomsnittspris (kr/kbm)

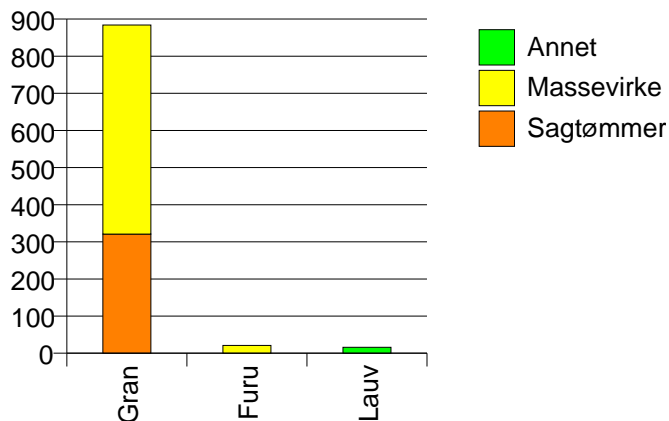


1520 ØRSTA

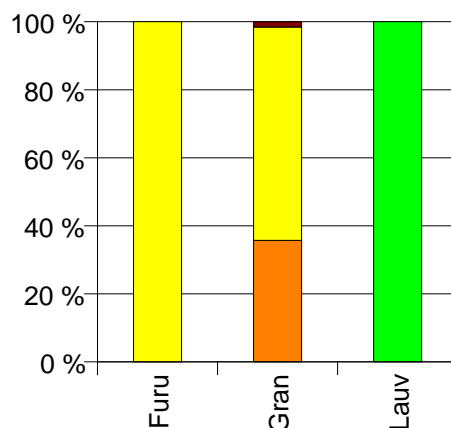
Volum 2007 (kbm)

	Sagtømmer	Massevirke	Annet	Vrak	Sum:
Furu		21			21
Gran	321	563		14	898
Lauv			16		16
Sum:	321	584	16	14	935

Volum (kbm)



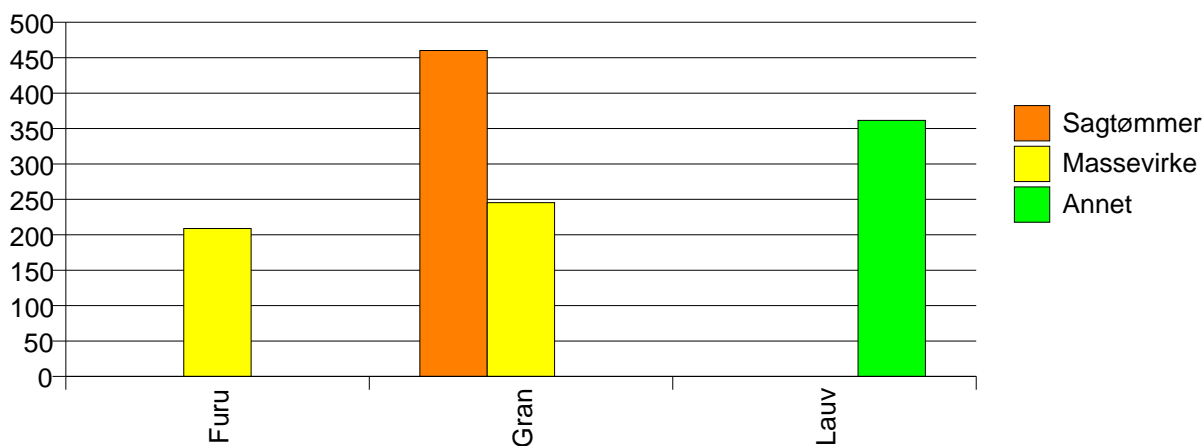
Volum (prosentfordelt)



Gjennomsnittspris 2007 (kr/kbm)

	Sagtømmer	Massevirke	Annet	Vrak	Snitt
Furu		209			209
Gran	460	245		0	318
Lauv			362		362
Snitt	460	244	362	0	317

Gjennomsnittspris (kr/kbm)

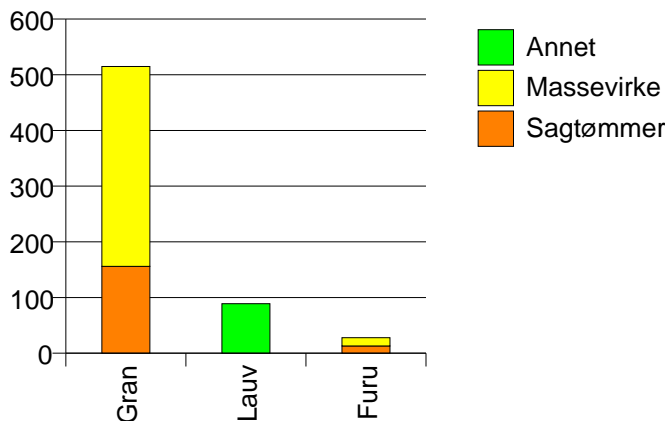


1525 STRANDA

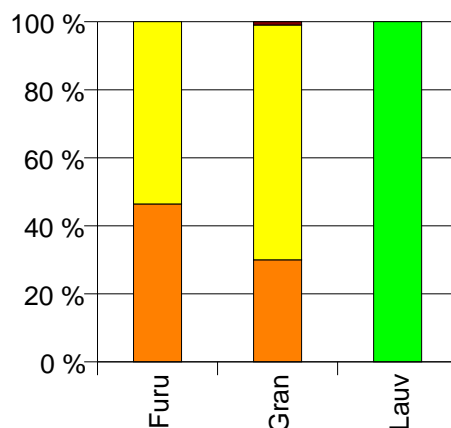
Volum 2007 (kbm)

	Sagtømmer	Massevirke	Annet	Vrak	Sum:
Furu	13	15			28
Gran	156	359		5	520
Lauv			89		89
Sum:	169	374	89	5	637

Volum (kbm)



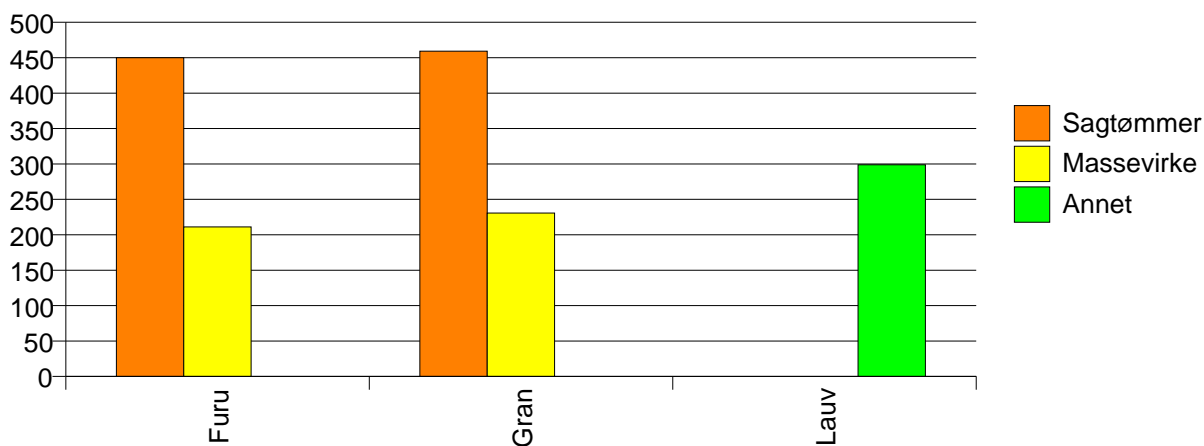
Volum (prosentfordelt)



Gjennomsnittspris 2007 (kr/kbm)

	Sagtømmer	Massevirke	Annet	Vrak	Snitt
Furu	450	211			322
Gran	459	231		0	297
Lauv			299		299
Snitt	458	230	299	0	298

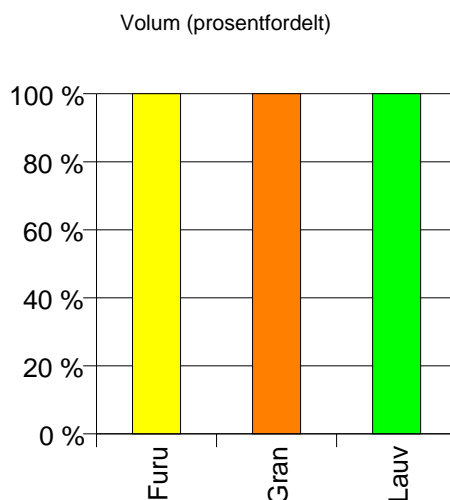
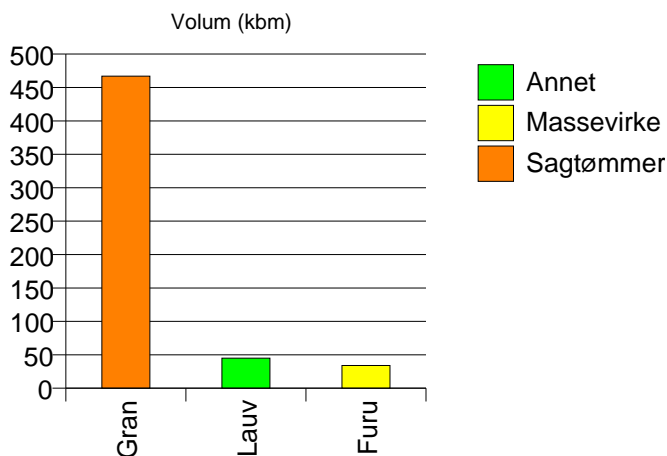
Gjennomsnittspris (kr/kbm)



1528 SYKKYLVEN

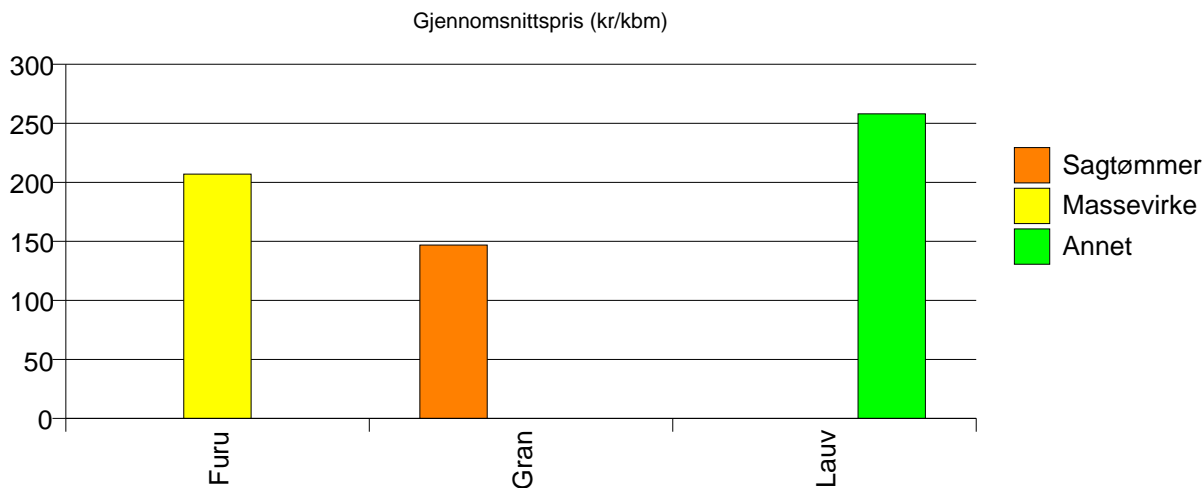
Volum 2007 (kbm)

	Sagtømmer	Massevirke	Annet	Sum:
Furu		34		34
Gran	467	0		467
Lauv			45	45
Sum:	467	34	45	546



Gjennomsnittspris 2007 (kr/kbm)

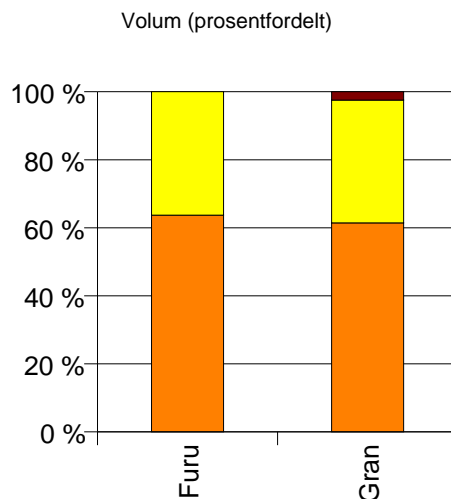
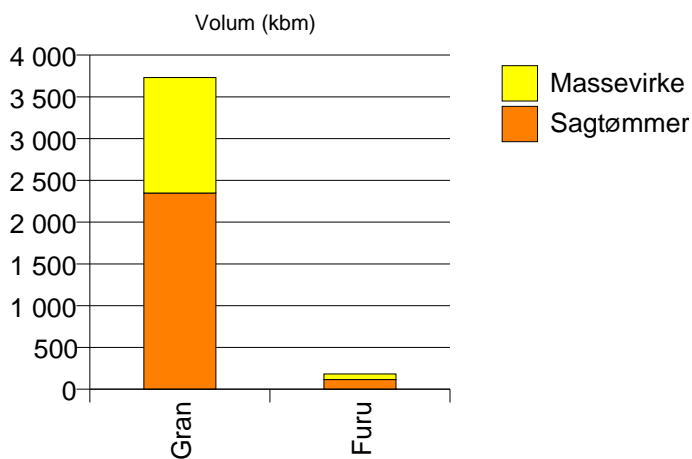
	Sagtømmer	Massevirke	Annet	Snitt
Furu		207		207
Gran	147	#DIV/0		148
Lauv			258	258
Snitt	147	224	258	161



1529 SKODJE

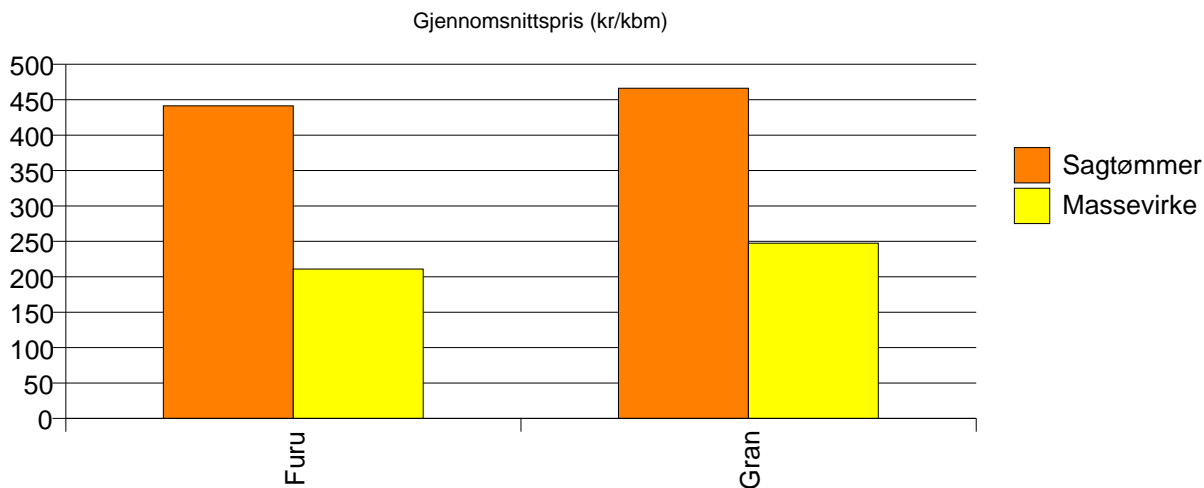
Volum 2007 (kbm)

	Sagtømmer	Massevirke	Vrak	Sum:
Furu	116	66		182
Gran	2 349	1 382	93	3 824
Sum:	2 465	1 448	93	4 006



Gjennomsnittspris 2007 (kr/kbm)

	Sagtømmer	Massevirke	Vrak	Snitt
Furu	441	211		358
Gran	466	248	0	376
Snitt	465	246	0	375

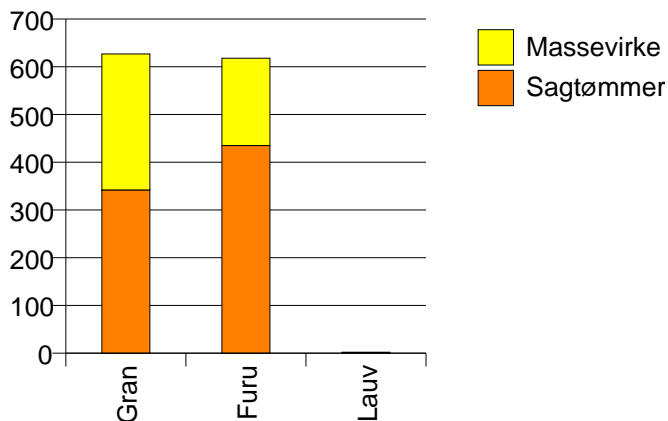


1535 VESTNES

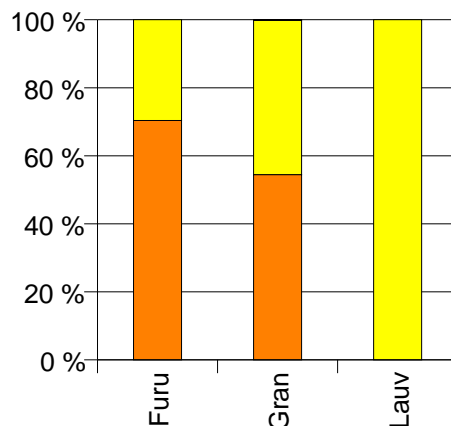
Volum 2007 (kbm)

	Sagtømmer	Massevirke	Vrak	Sum:
Furu	435	183		618
Gran	342	285	1	628
Lauv		2		2
Sum:	777	470	1	1 248

Volum (kbm)



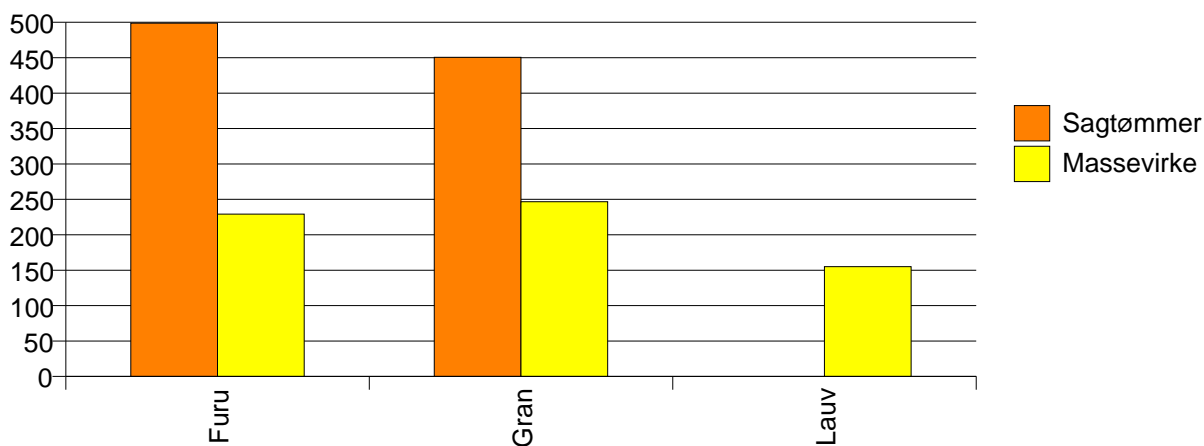
Volum (prosentfordelt)



Gjennomsnittspris 2007 (kr/kbm)

	Sagtømmer	Massevirke	Vrak	Snitt
Furu	499	229		419
Gran	451	247	0	357
Lauv		155		155
Snitt	478	239	0	388

Gjennomsnittspris (kr/kbm)

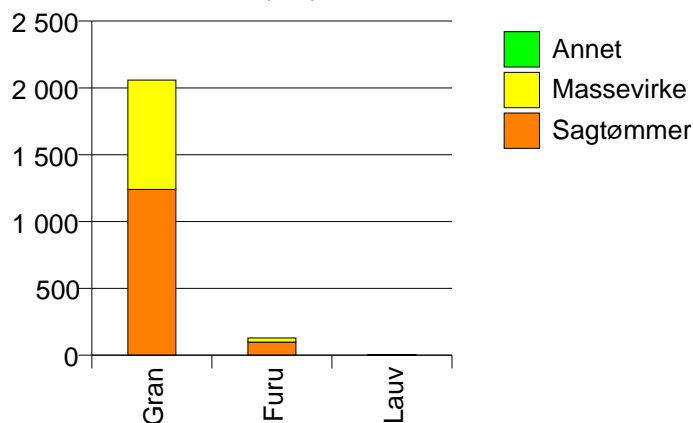


1548 FRÆNA

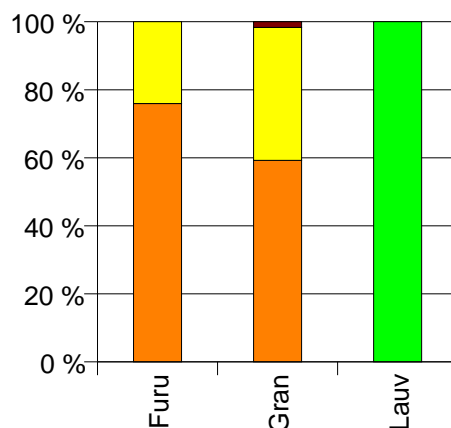
Volum 2007 (kbm)

	Sagtømmer	Massevirke	Annet	Vrak	Sum:
Furu	98	31			129
Gran	1 241	818		35	2 094
Lauv			4		4
Sum:	1 339	849	4	35	2 227

Volum (kbm)



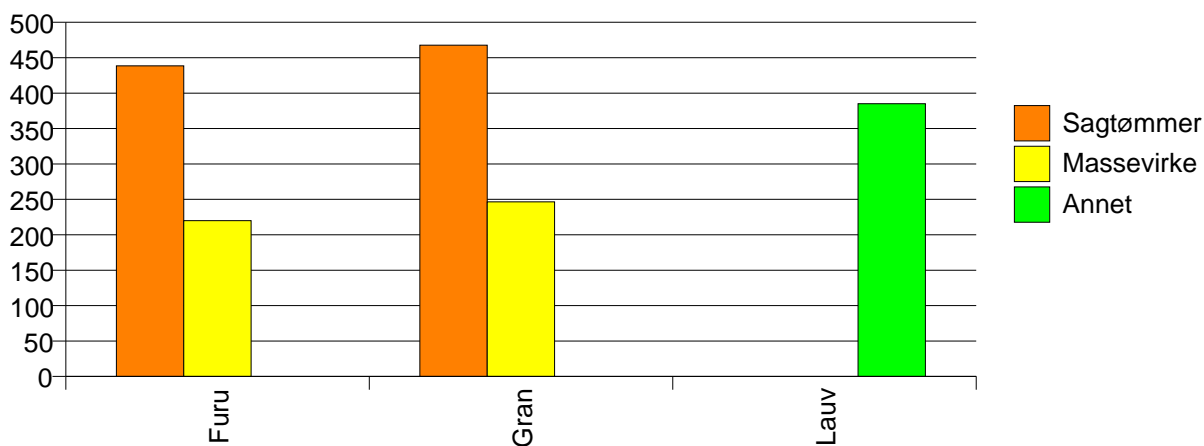
Volum (prosentfordelt)



Gjennomsnittspris 2007 (kr/kbm)

	Sagtømmer	Massevirke	Annet	Vrak	Snitt
Furu	439	220			386
Gran	468	246		0	373
Lauv			385		385
Snitt	466	246	385	0	374

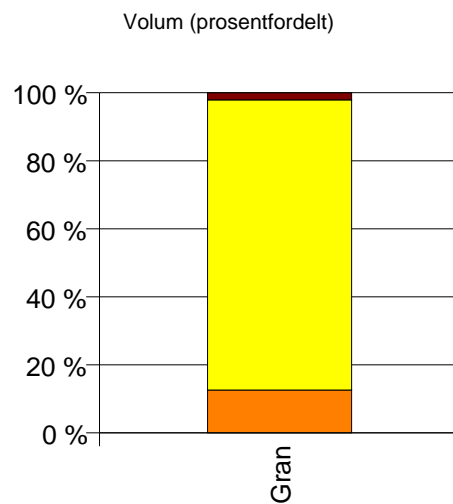
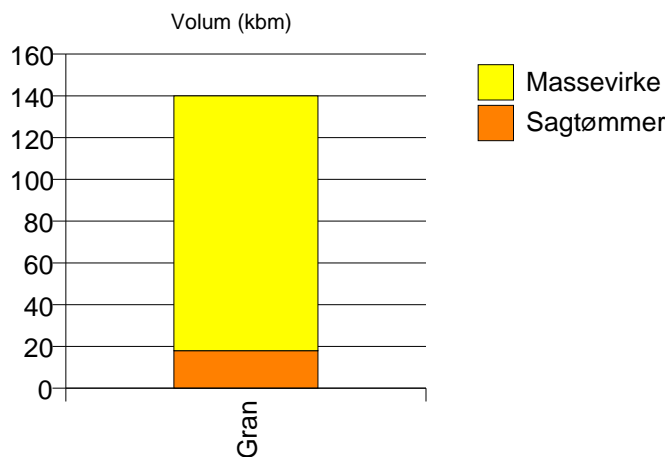
Gjennomsnittspris (kr/kbm)



1554 AVERØY

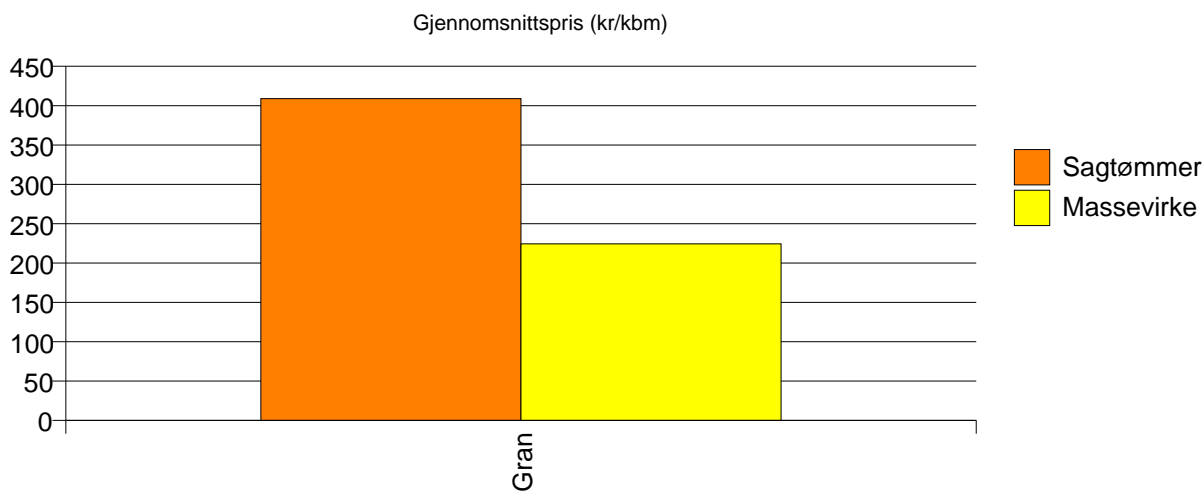
Volum 2007 (kbm)

	Sagtømmer	Massevirke	Vrak	Sum:
Gran	18	122	3	143
Sum:	18	122	3	143



Gjennomsnittspris 2007 (kr/kbm)

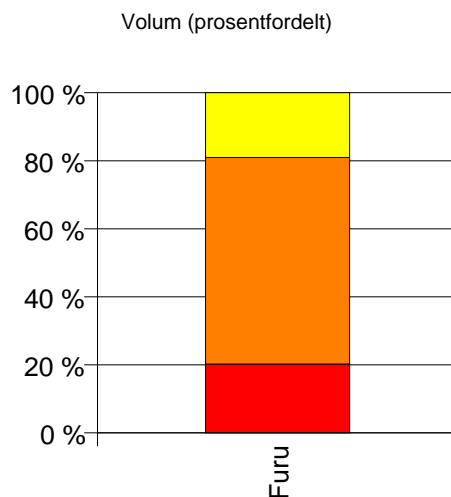
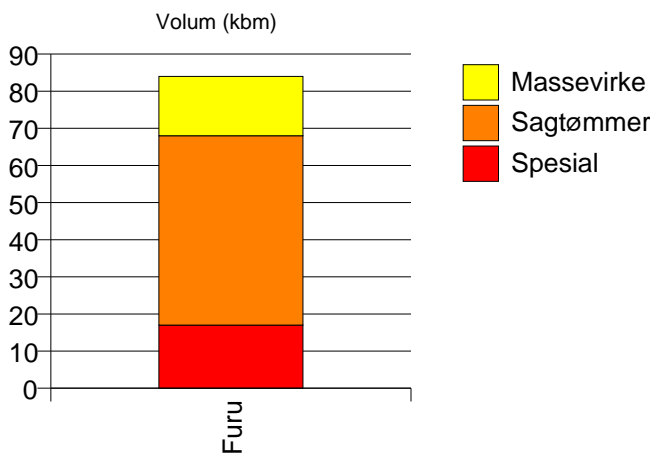
Gran	409	224	0	243
Snitt	409	224	0	243



1556 FREI

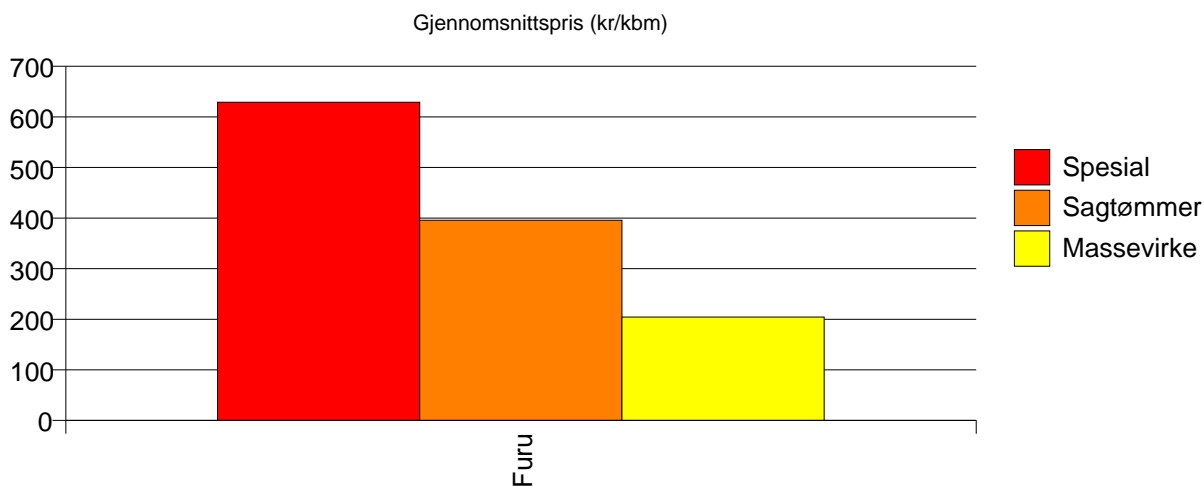
Volum 2007 (kbm)

	Spesial	Sagtømmer	Massevirke	Sum:
Furu	17	51	16	84
Sum:	17	51	16	84



Gjennomsnittspris 2007 (kr/kbm)

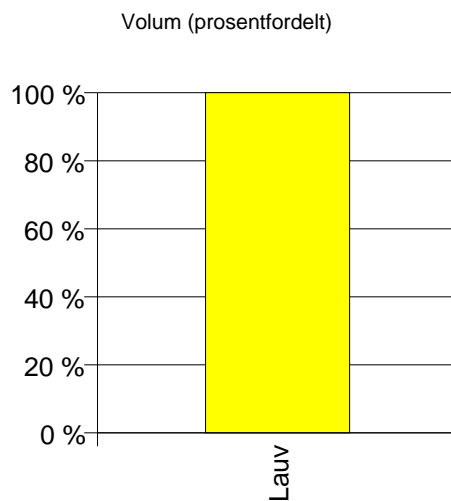
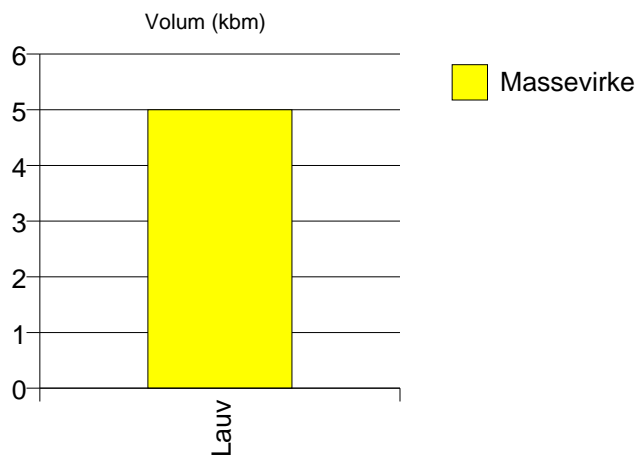
Furu	629	396	205	407
Snitt	629	396	205	407



1523 ØRSKOG

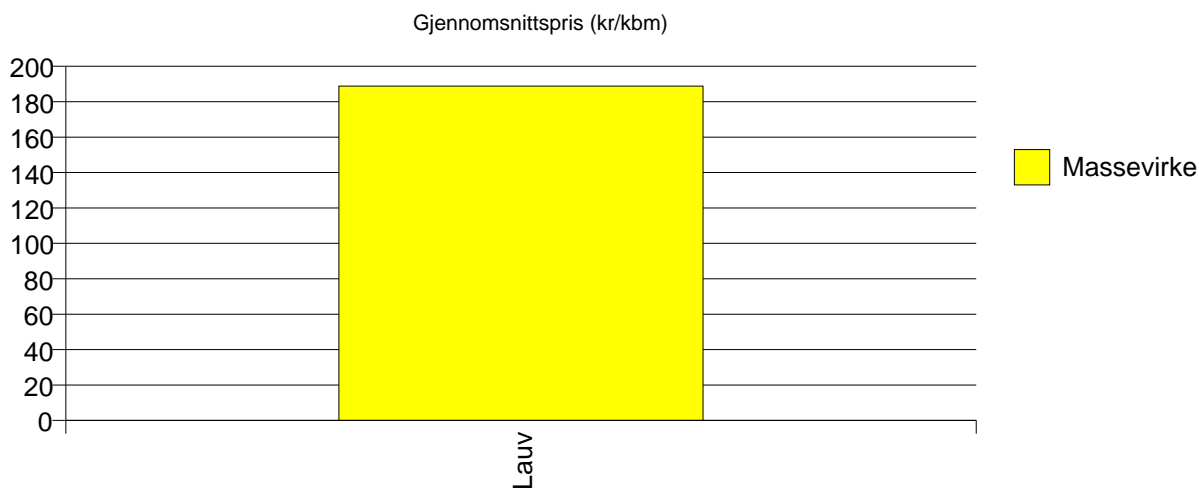
Volum 2007 (kbm)

	Massevirke	Sum:
Lauv	5	5
Sum:	5	5



Gjennomsnittspris 2007 (kr/kbm)

Lauv	189	189
Snitt	189	189

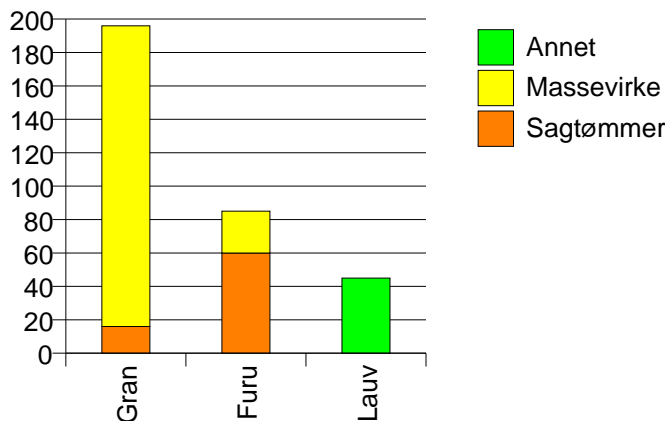


1524 NORDDAL

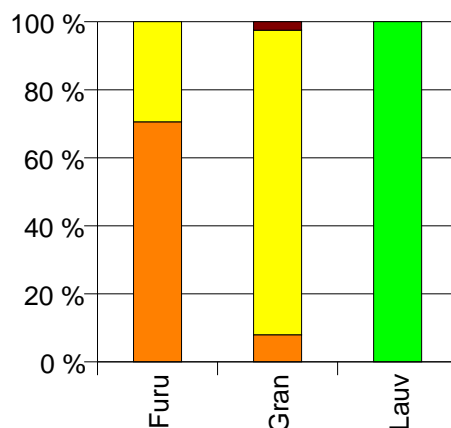
Volum 2007 (kbm)

	Sagtømmer	Massevirke	Annet	Vrak	Sum:
Furu	60	25			85
Gran	16	180		5	201
Lauv			45		45
Sum:	76	205	45	5	331

Volum (kbm)



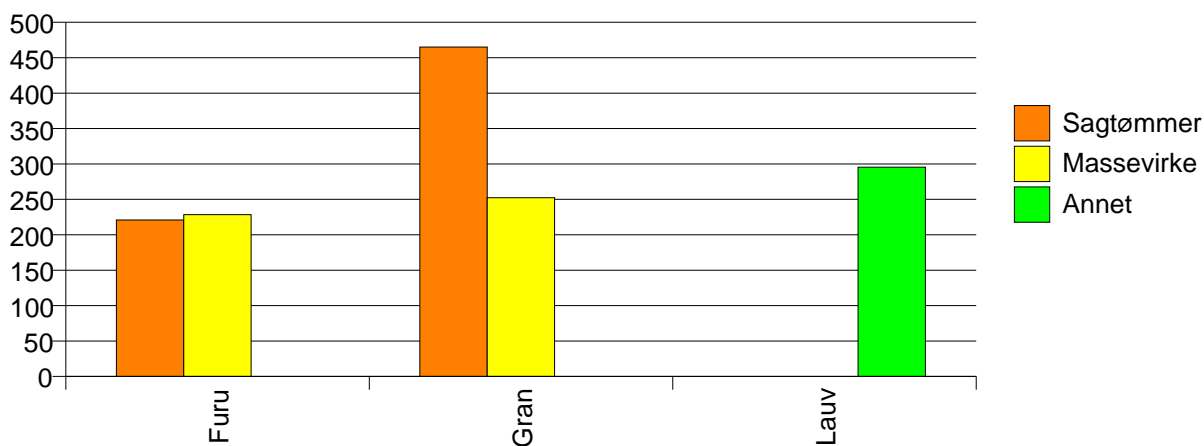
Volum (prosentfordelt)



Gjennomsnittspris 2007 (kr/kbm)

	Sagtømmer	Massevirke	Annet	Vrak	Snitt
Furu	221	228			223
Gran	465	252		0	263
Lauv			296		296
Snitt	272	249	296	0	257

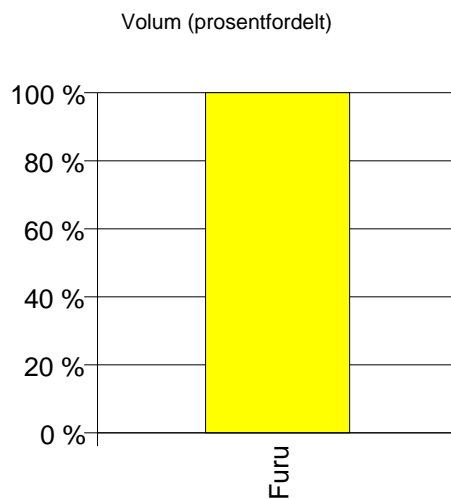
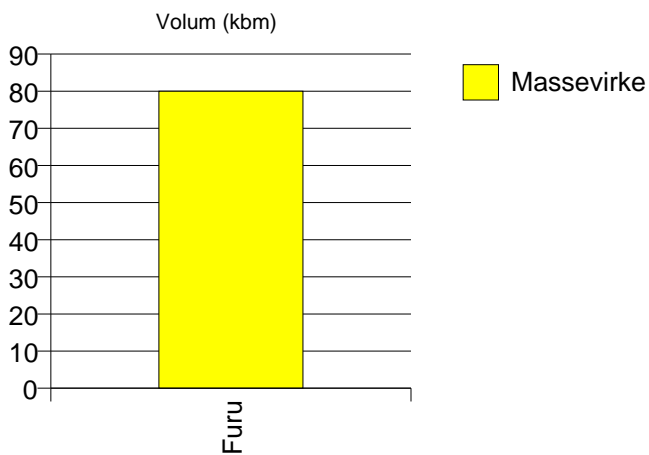
Gjennomsnittspris (kr/kbm)



1515 HERØY

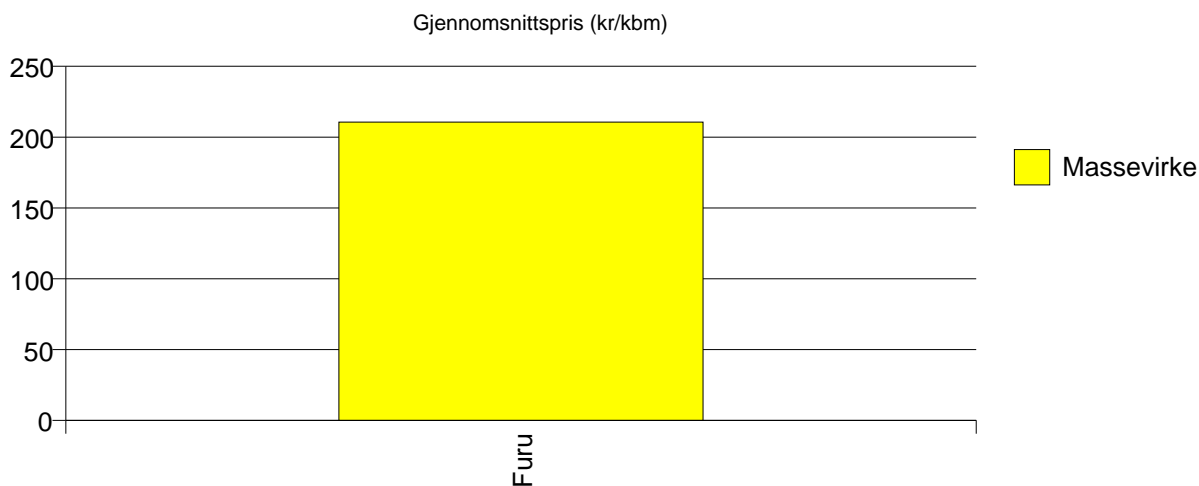
Volum 2007 (kbm)

	Massevirke	Sum:
Furu	80	80
Sum:	80	80



Gjennomsnittspris 2007 (kr/kbm)

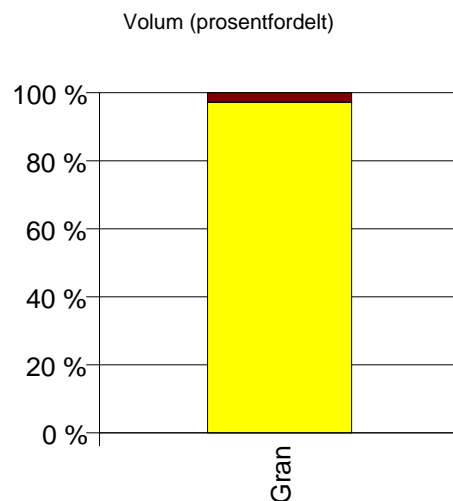
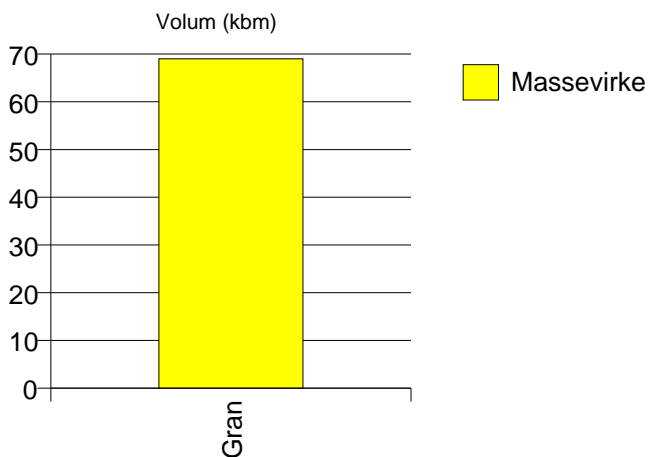
Furu	211	211
Snitt	211	211



1526 STORDAL

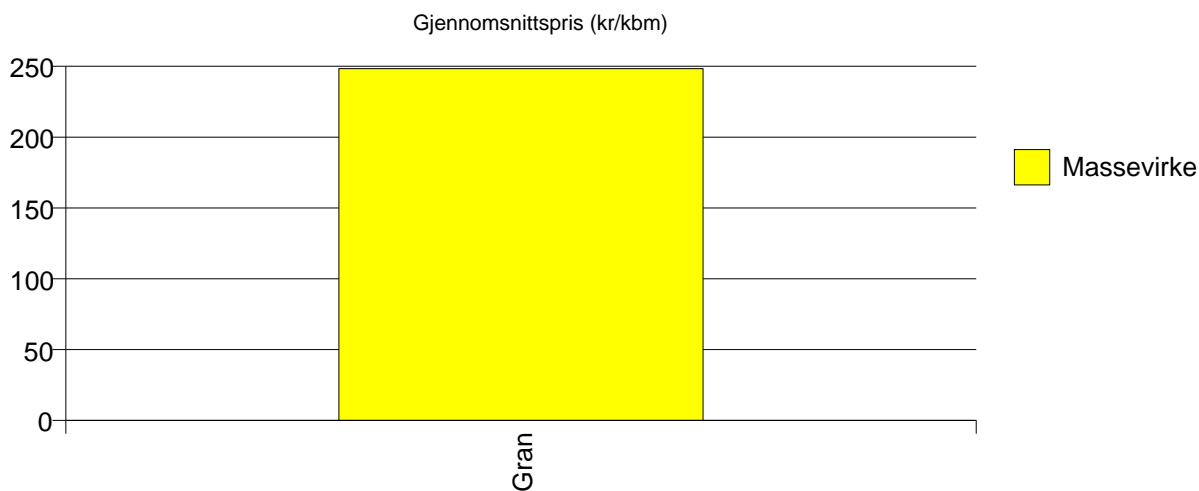
Volum 2007 (kbm)

	Massevirke	Vrak	Sum:
Gran	69	2	71
Sum:	69	2	71



Gjennomsnittspris 2007 (kr/kbm)

Gran	248	0	241
Snitt	248	0	241

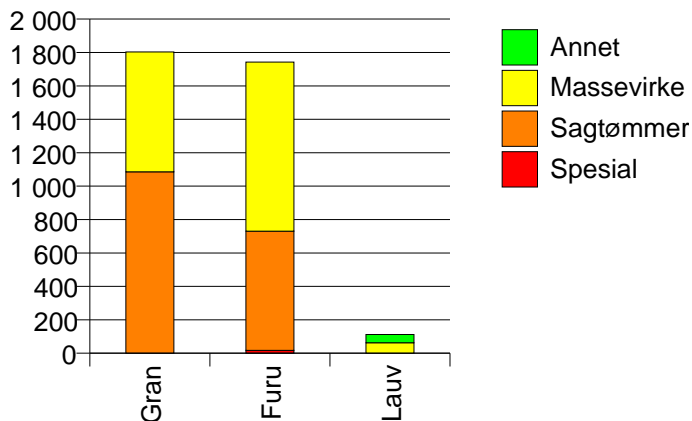


1576 AURE

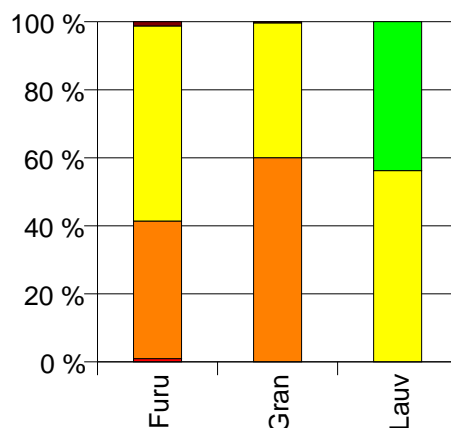
Volum 2007 (kbm)

	Spesial	Sagtømmer	Massevirke	Annet	Vrak	Sum:
Furu	17	714	1 012		22	1 765
Gran		1 086	717		6	1 809
Lauv			63	49		112
Sum:	17	1 800	1 792	49	28	3 686

Volum (kbm)



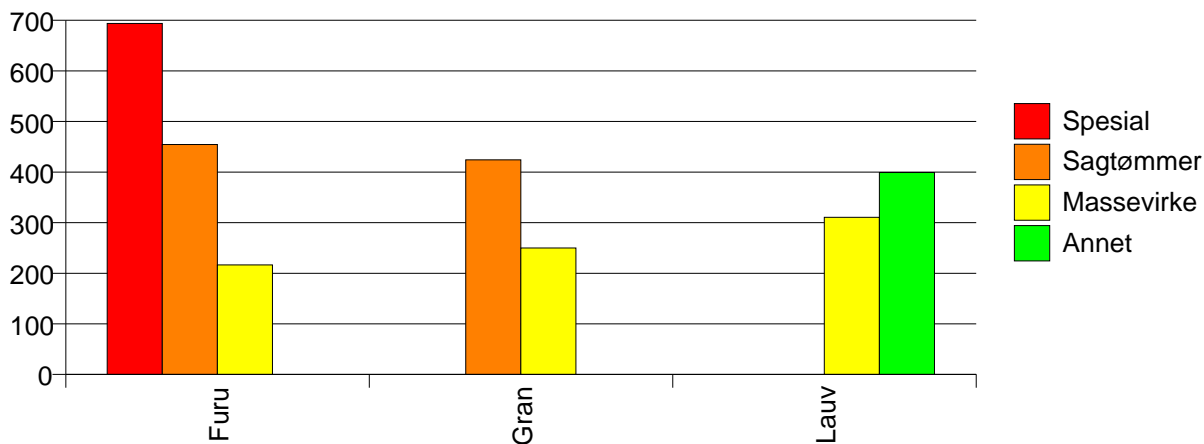
Volum (prosentfordelt)



Gjennomsnittspris 2007 (kr/kbm)

	Spesial	Sagtømmer	Massevirke	Annet	Vrak	Snitt
Furu	694	454	216		0	315
Gran		424	250		0	354
Lauv			310	399		349
Snitt	694	436	233	399	0	335

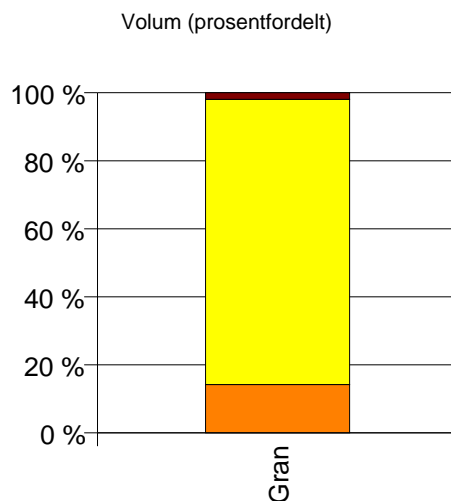
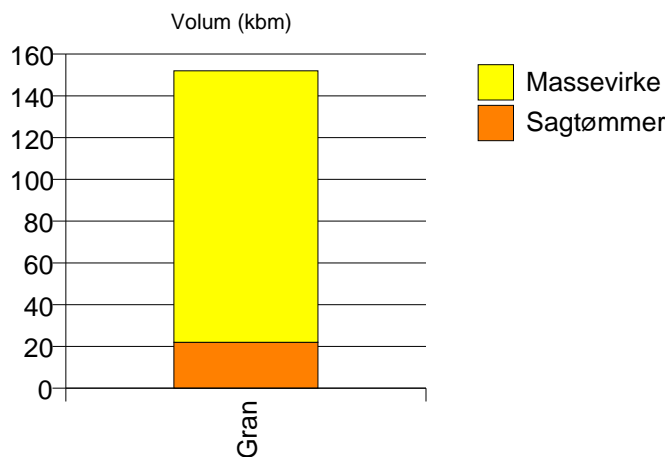
Gjennomsnittspris (kr/kbm)



1503 KRISTIANSUND

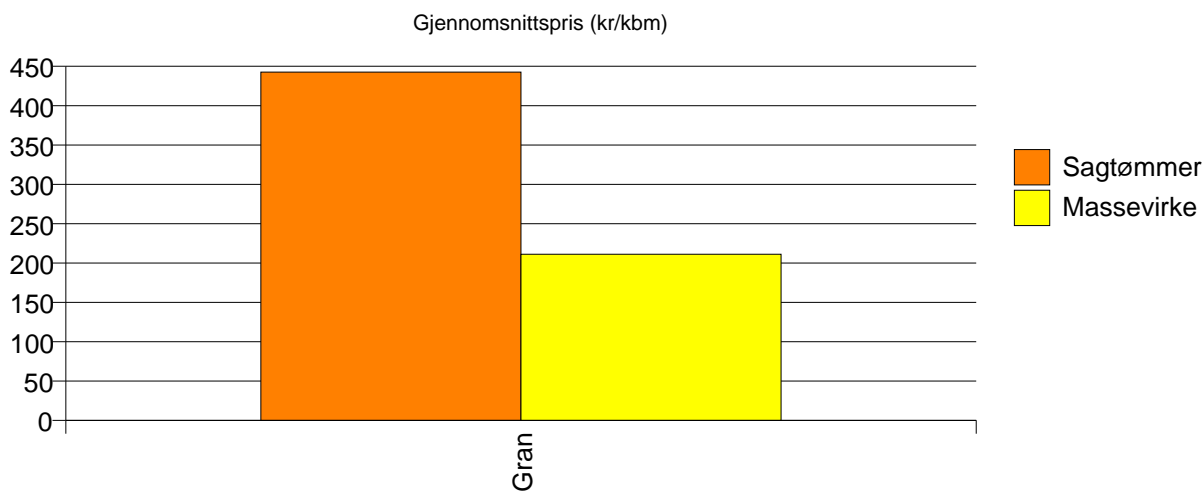
Volum 2007 (kbm)

	Sagtømmer	Massevirke	Vrak	Sum:
Gran	22	130	3	155
Sum:	22	130	3	155



Gjennomsnittspris 2007 (kr/kbm)

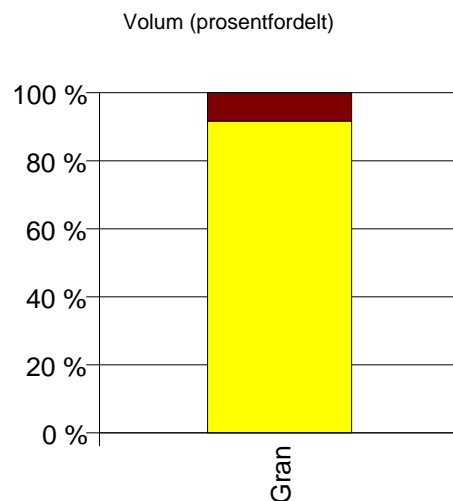
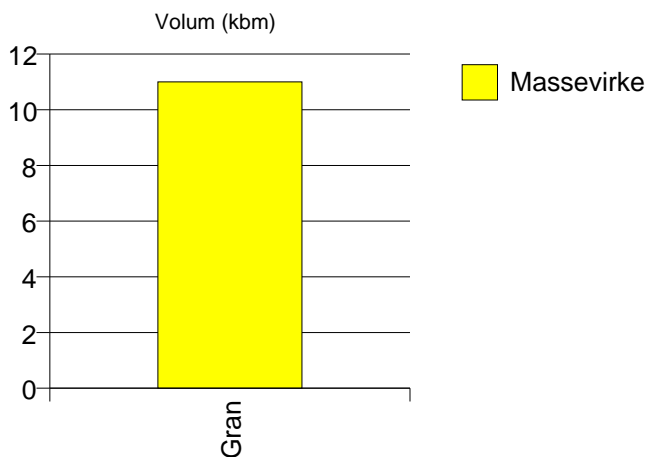
Gran	443	211	0	240
Snitt	443	211	0	240



1517 HAREID

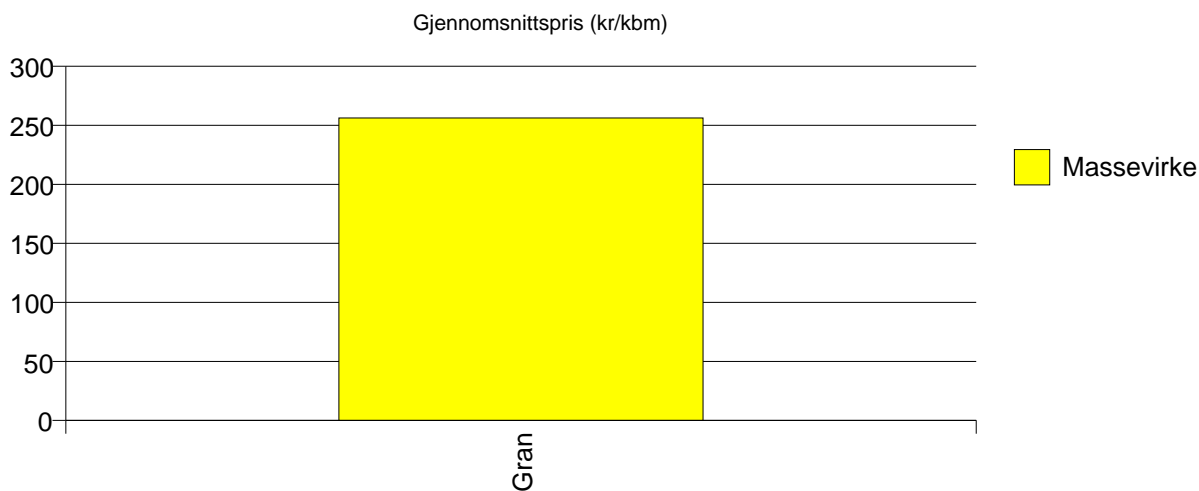
Volum 2007 (kbm)

	Massevirke	Vrak	Sum:
Gran	11	1	12
Sum:	11	1	12



Gjennomsnittspris 2007 (kr/kbm)

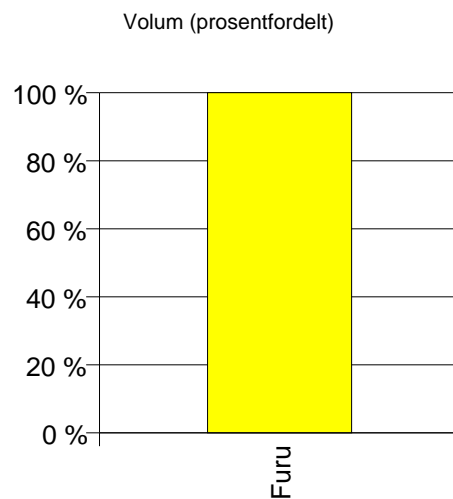
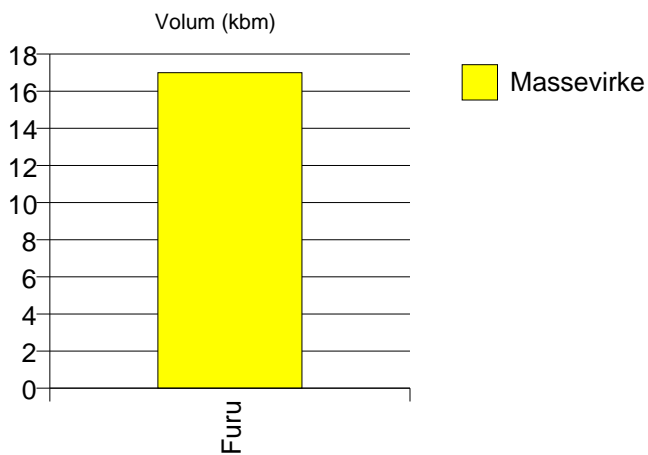
Gran	256	0	235
Snitt	256	0	235



1545 MIDSUND

Volum 2007 (kbm)

	Massevirke	Sum:
Furu	17	17
Sum:	17	17



Gjennomsnittspris 2007 (kr/kbm)

Furu	207	207
Snitt	207	207

