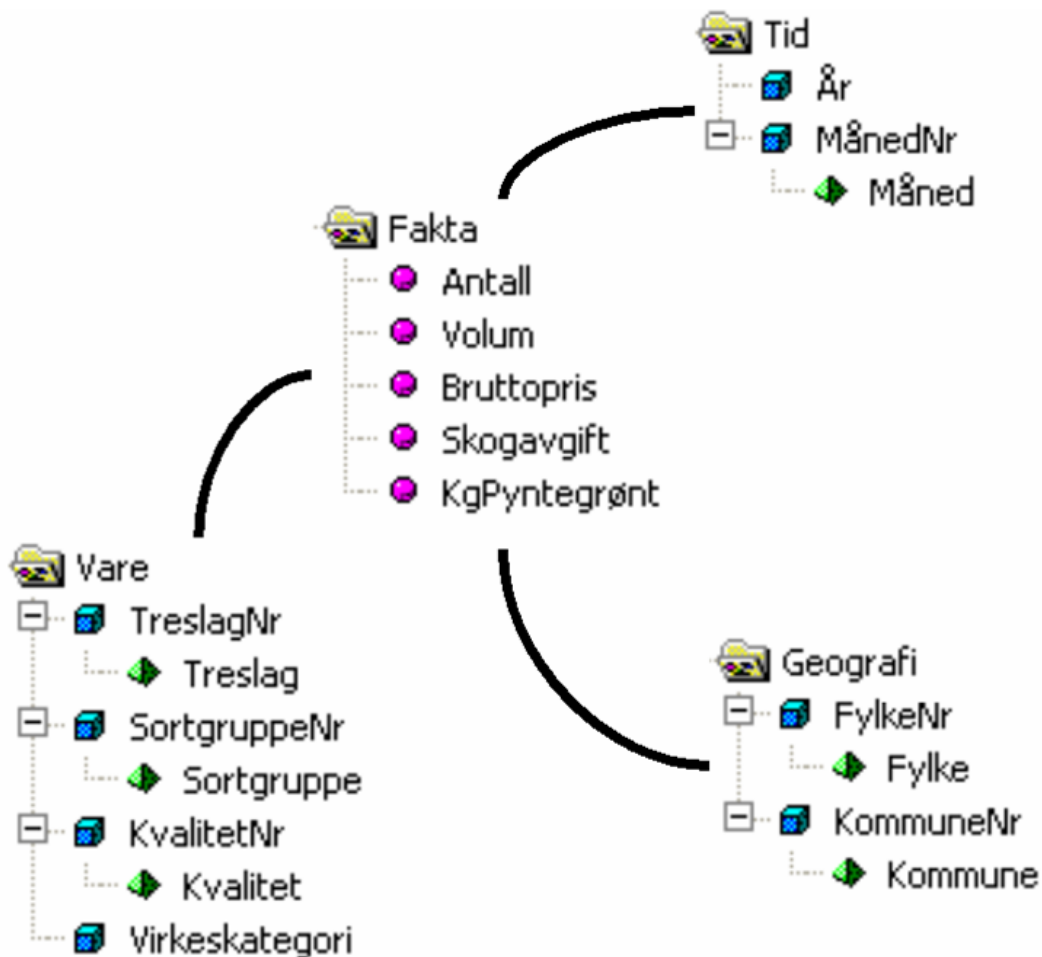


# Virkestatistikk fra SKOG-DATA AS

m/kommuner



Dataene i rapporten er hentet fra databasen som inneholder virkesdata med tilhørende innbetalinger av skogavgift. Rapporten er laget med Business Objects, som er sluttbrukerverktøyet i Skog-Data sine nye datavarehus-løsninger. Business Objects er ett meget sterkt rapportverktøy som kan presentere store mengder data effektivt.

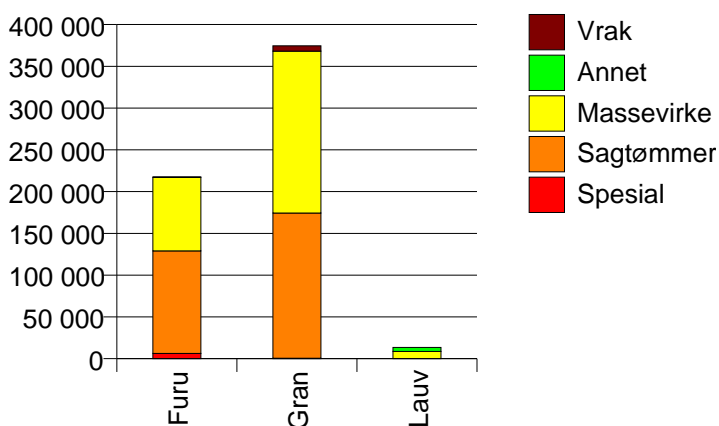
Rapportene kan lastes ned fra [www.skogdata.no/statistikk](http://www.skogdata.no/statistikk)

For mer informasjon, kontakt: [alexanderh@skogdata.no](mailto:alexanderh@skogdata.no)

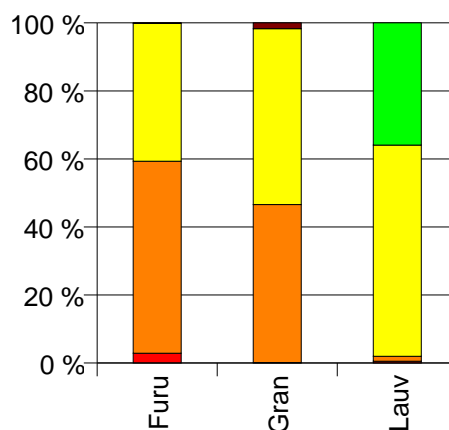
## Volum

	Spesial	Sagtømmer	Massevirke	Annet	Vrak	Sum:
Furu	6 255	122 786	88 129		325	217 495
Gran	570	173 861	193 688		6 413	374 532
Lauv	71	196	8 368	4 838		13 473
Sum:	6 896	296 843	290 185	4 838	6 738	605 500

Volum (kbm)



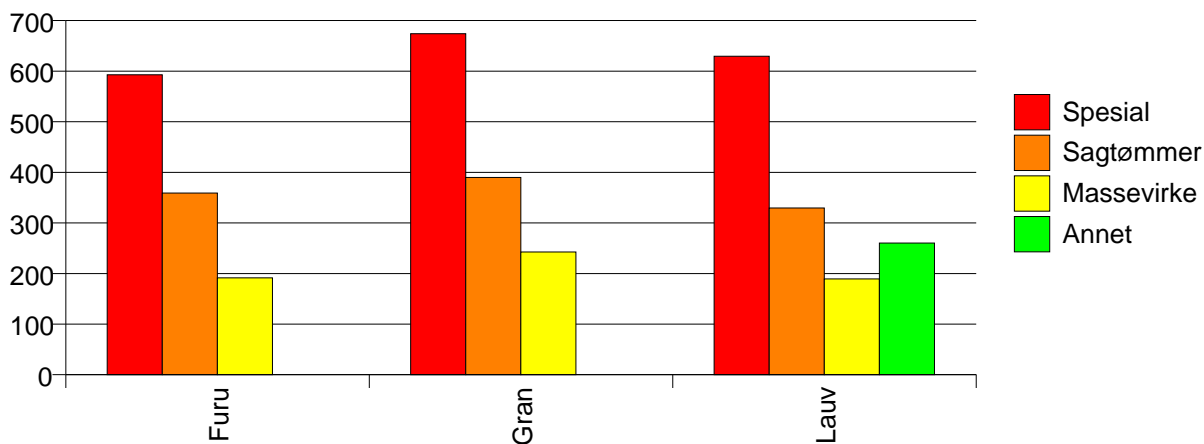
Volum (prosentfordelt)



## Gjennomsnittspris (kr/kbm)

	Spesial	Sagtømmer	Massevirke	Annet	Vrak	Snitt:
Furu	593	359	191		0	297
Gran	674	390	243		0	307
Lauv	629	330	189	260		219
Snitt:	600	377	225	260	0	302

Gjennomsnittspris (kr/kbm)

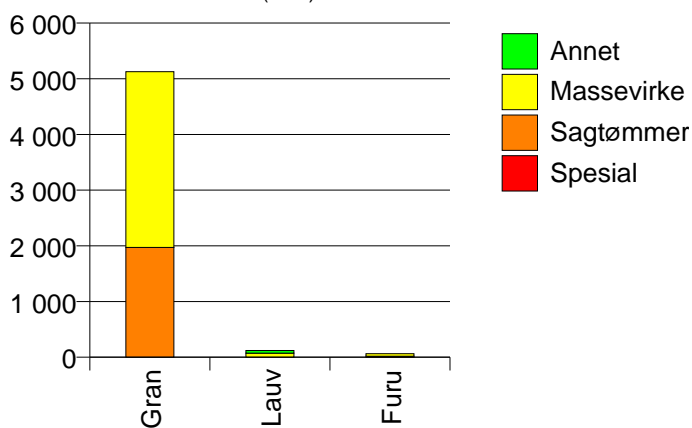


## 805 PORSGRUNN

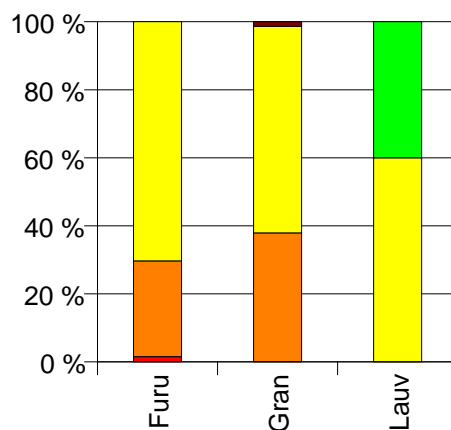
Volum (kbm)

	Spesial	Sagtømmer	Massevirke	Annet	Vrak	Sum:
Furu	1	18	45			64
Gran		1 972	3 155		70	5 197
Lauv	0	0	72	48		120
Sum:	1	1 990	3 272	48	70	5 381

Volum (kbm)



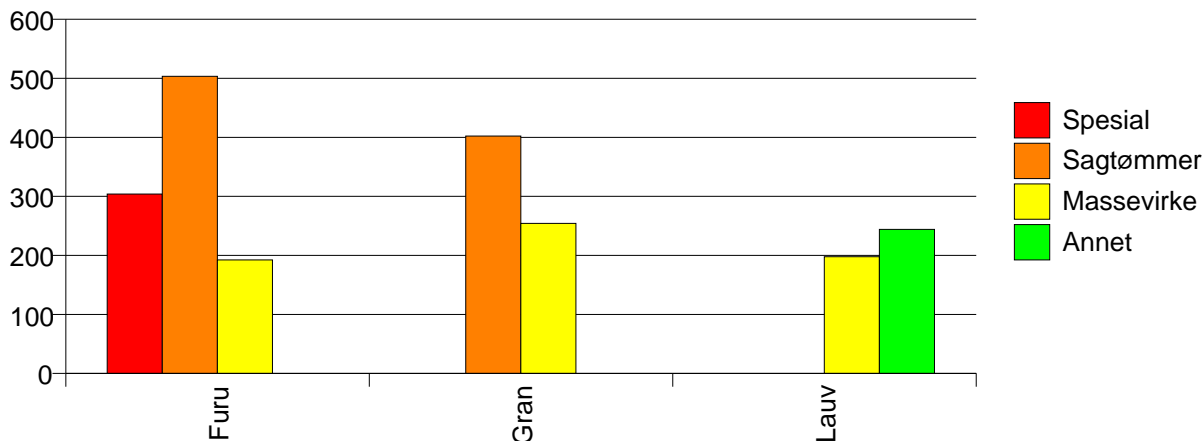
Volum (prosentfordelt)



Gjennomsnittspris (kr/kbm)

	Spesial	Sagtømmer	Massevirke	Annet	Vrak	Snitt
Furu	304	503	192			282
Gran		402	254		0	307
Lauv	#DIV/0	#DIV/0	198	244		217
Snitt	332	403	252	244	0	305

Gjennomsnittspris (kr/kbm)

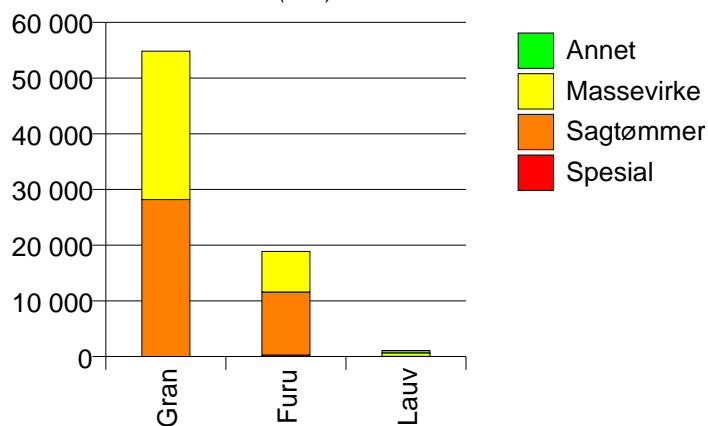


## 806 SKIEN

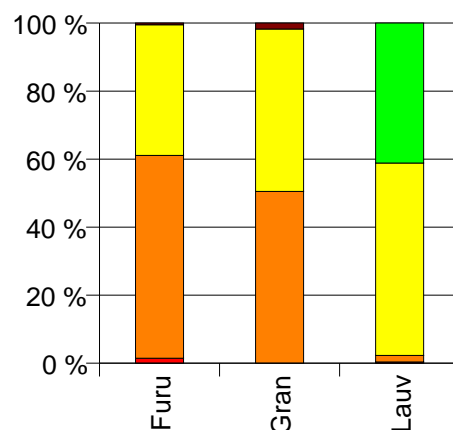
Volum (kbm)

	Spesial	Sagtømmer	Massevirke	Annet	Vrak	Sum:
Furu	276	11 317	7 285		95	18 973
Gran		28 189	26 642		983	55 814
Lauv	4	21	622	452		1 099
Sum:	280	39 527	34 549	452	1 078	75 886

Volum (kbm)



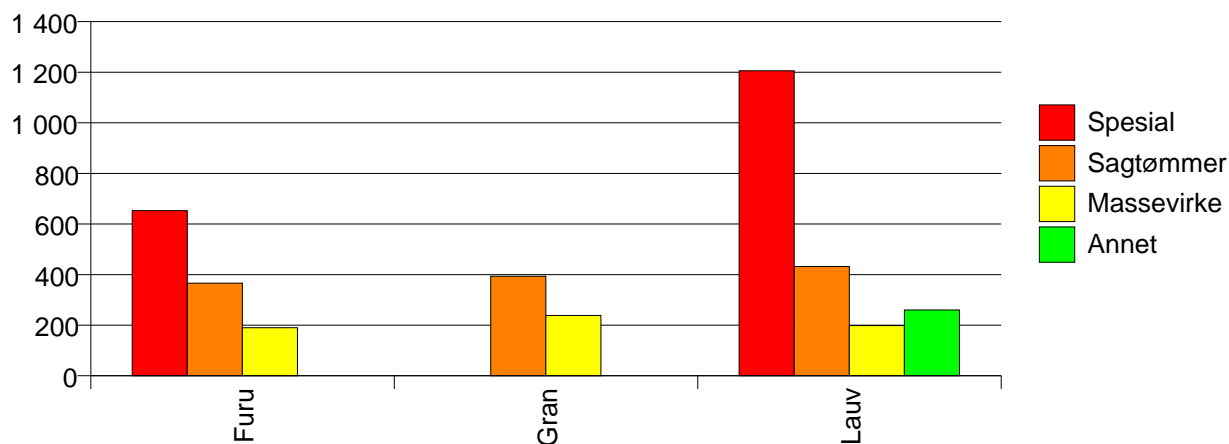
Volum (prosentfordelt)



Gjennomsnittspris (kr/kbm)

	Spesial	Sagtømmer	Massevirke	Annet	Vrak	Snitt
Furu	653	366	190		0	301
Gran		393	239		0	313
Lauv	1 206	432	198	260		232
Snitt	661	385	228	260	0	308

Gjennomsnittspris (kr/kbm)

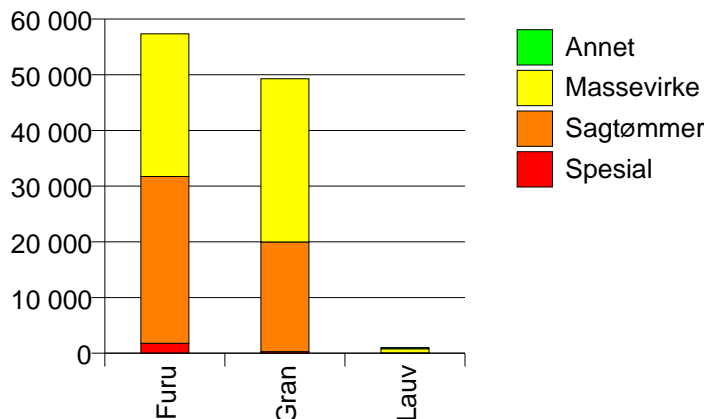


## 807 NOTODDEN

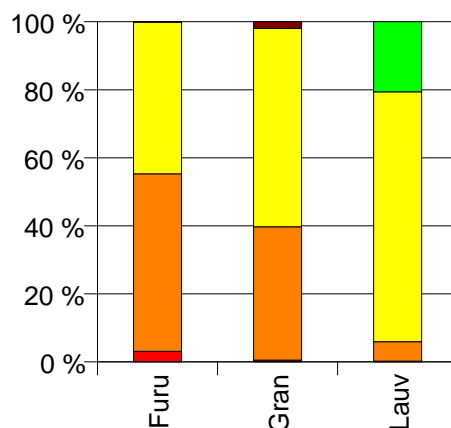
### Volum (kbm)

	Spesial	Sagtømmer	Massevirke	Annet	Vrak	Sum:
Furu	1 795	29 949	25 602		46	57 392
Gran	272	19 711	29 294		1 004	50 281
Lauv	2	58	741	208		1 009
Sum:	2 069	49 718	55 637	208	1 050	108 682

Volum (kbm)



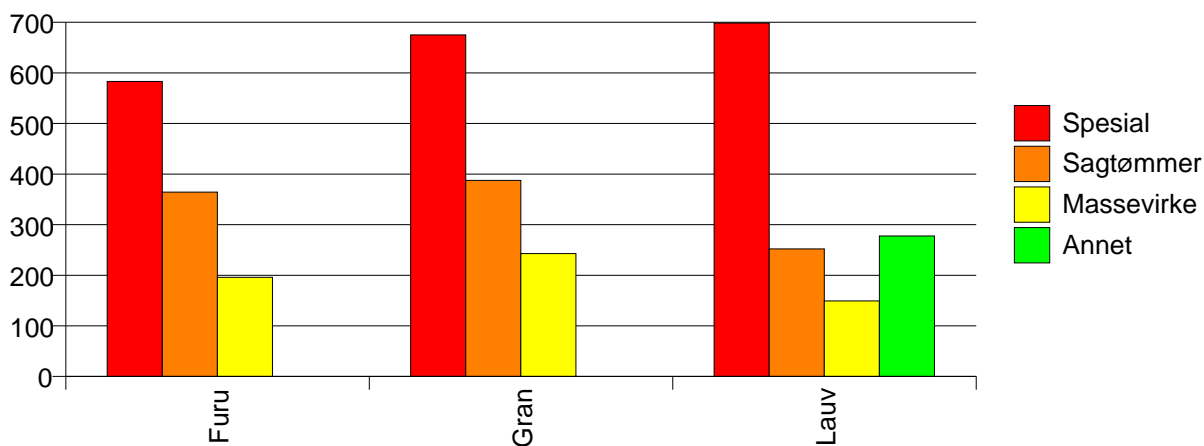
Volum (prosentfordelt)



### Gjennomsnittspris (kr/kbm)

	Spesial	Sagtømmer	Massevirke	Annet	Vrak	Snitt
Furu	583	364	196		0	296
Gran	675	388	243		0	297
Lauv	699	252	149	278		183
Snitt	595	373	220	278	0	295

Gjennomsnittspris (kr/kbm)

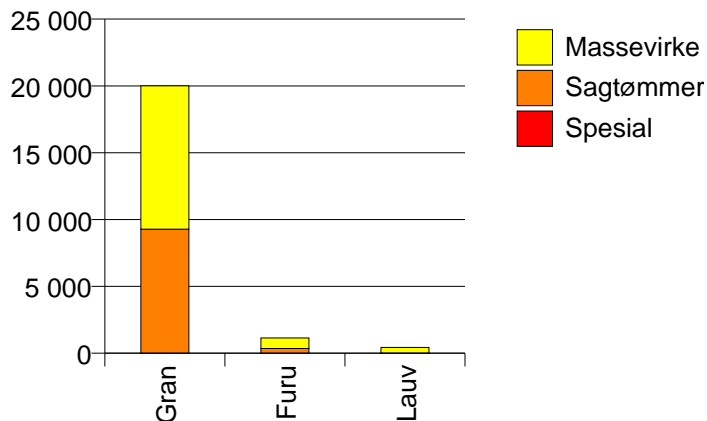


## 811 SILJAN

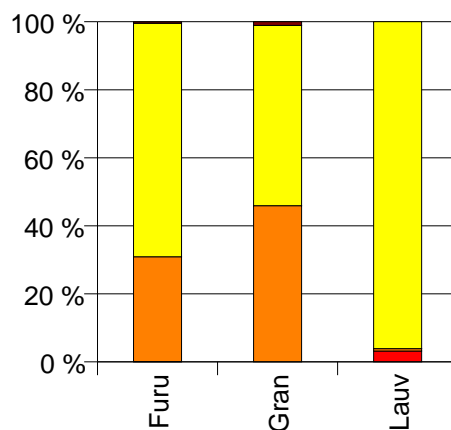
Volum (kbm)

	Spesial	Sagtømmer	Massevirke	Vrak	Sum:
Furu	1	353	787	5	1 146
Gran		9 287	10 717	218	20 222
Lauv	14	3	421		438
Sum:	15	9 643	11 925	223	21 806

Volum (kbm)



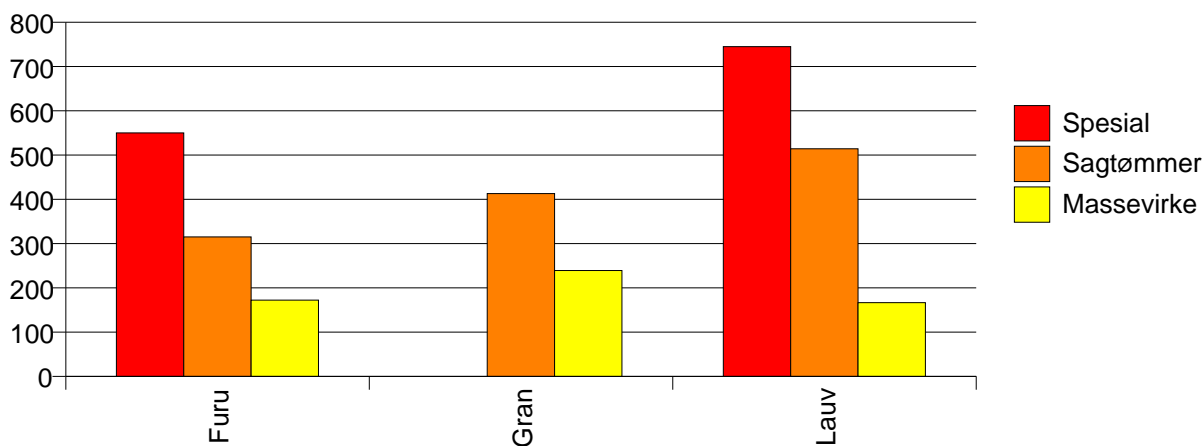
Volum (prosentfordelt)



Gjennomsnittspris (kr/kbm)

	Spesial	Sagtømmer	Massevirke	Vrak	Snitt
Furu	550	315	172	0	216
Gran		413	239	0	317
Lauv	745	514	167		188
Snitt	732	410	232	0	309

Gjennomsnittspris (kr/kbm)

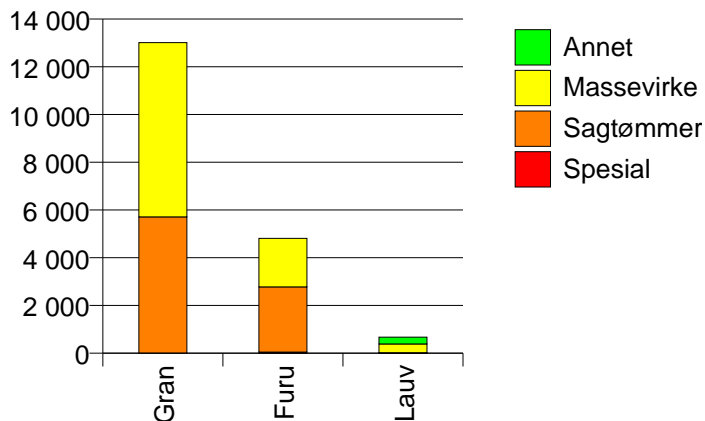


# 814 BAMBLE

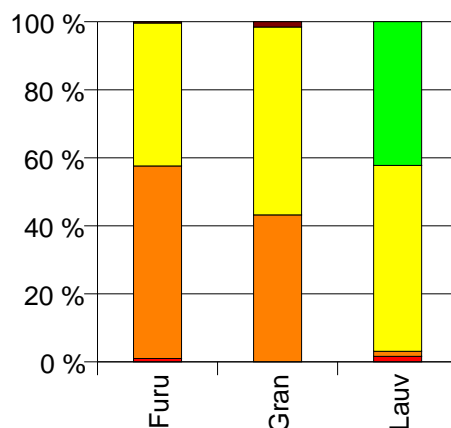
Volum (kbm)

	Spesial	Sagtømmer	Massevirke	Annet	Vrak	Sum:
Furu	49	2 733	2 029		18	4 829
Gran		5 714	7 301		207	13 222
Lauv	11	10	369	285		675
Sum:	60	8 457	9 699	285	225	18 726

Volum (kbm)



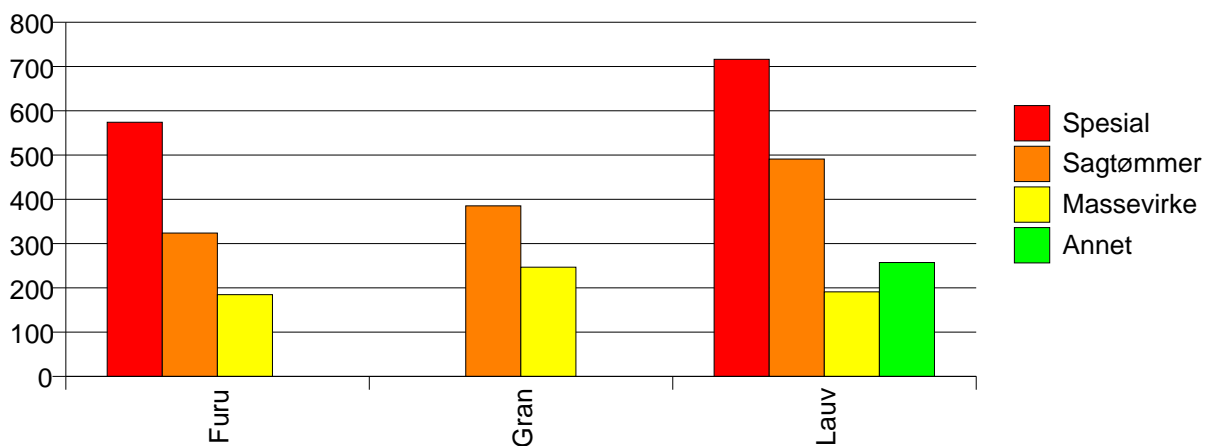
Volum (prosentfordelt)



Gjennomsnittspris (kr/kbm)

	Spesial	Sagtømmer	Massevirke	Annet	Vrak	Snitt
Furu	574	324	185		0	267
Gran		385	247		0	303
Lauv	716	491	191	257		232
Snitt	600	366	232	257	0	291

Gjennomsnittspris (kr/kbm)

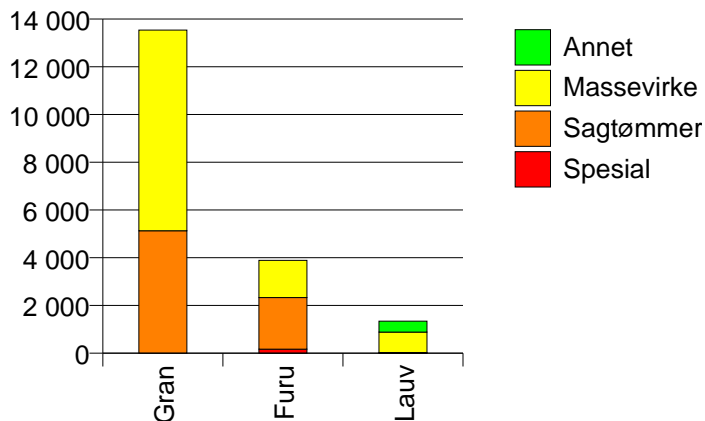


# 815 KRAGERØ

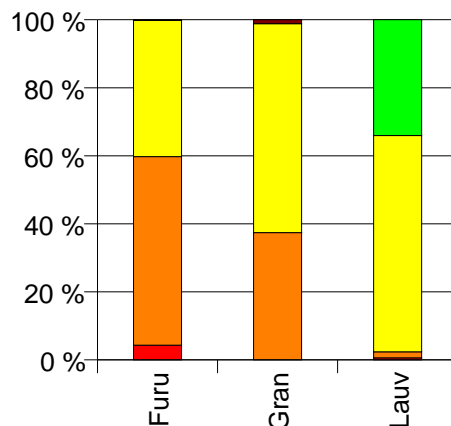
## Volum (kbm)

	Spesial	Sagtømmer	Massevirke	Annet	Vrak	Sum:
Furu	169	2 161	1 561		7	3 898
Gran		5 129	8 412		161	13 702
Lauv	8	24	855	458		1 345
Sum:	177	7 314	10 828	458	168	18 945

Volum (kbm)



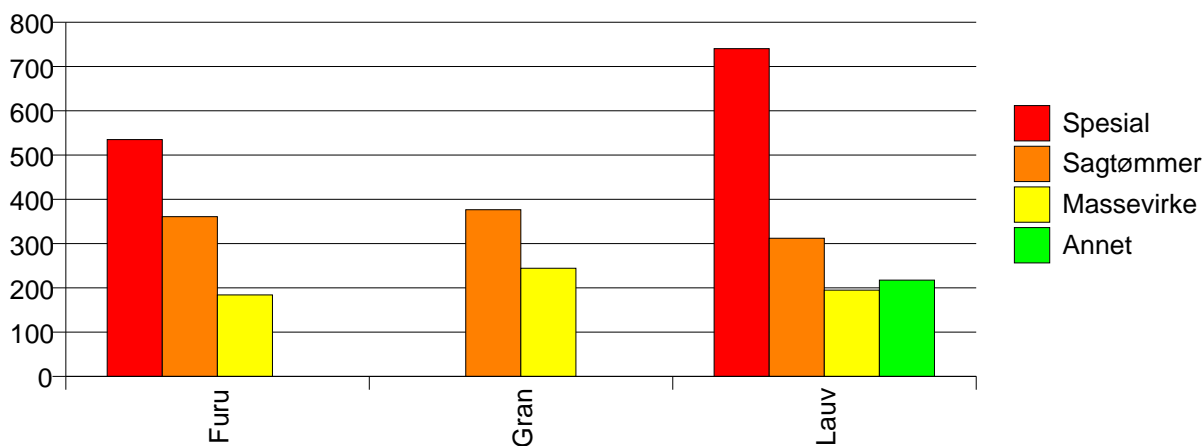
Volum (prosentfordelt)



## Gjennomsnittspris (kr/kbm)

	Spesial	Sagtømmer	Massevirke	Annet	Vrak	Snitt
Furu	535	361	184		0	297
Gran		377	245		0	291
Lauv	741	312	195	218		208
Snitt	544	372	232	218	0	286

Gjennomsnittspris (kr/kbm)



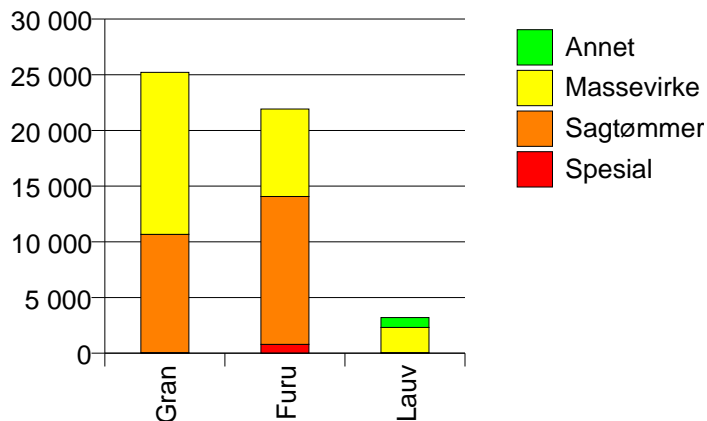


## 817 DRANGEDAL

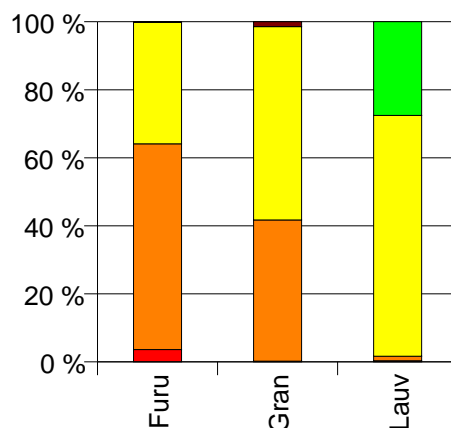
Volum (kbm)

	Spesial	Sagtømmer	Massevirke	Annet	Vrak	Sum:
Furu	798	13 280	7 852		29	21 959
Gran	54	10 618	14 542		362	25 576
Lauv	11	42	2 269	882		3 204
Sum:	863	23 940	24 663	882	391	50 739

Volum (kbm)



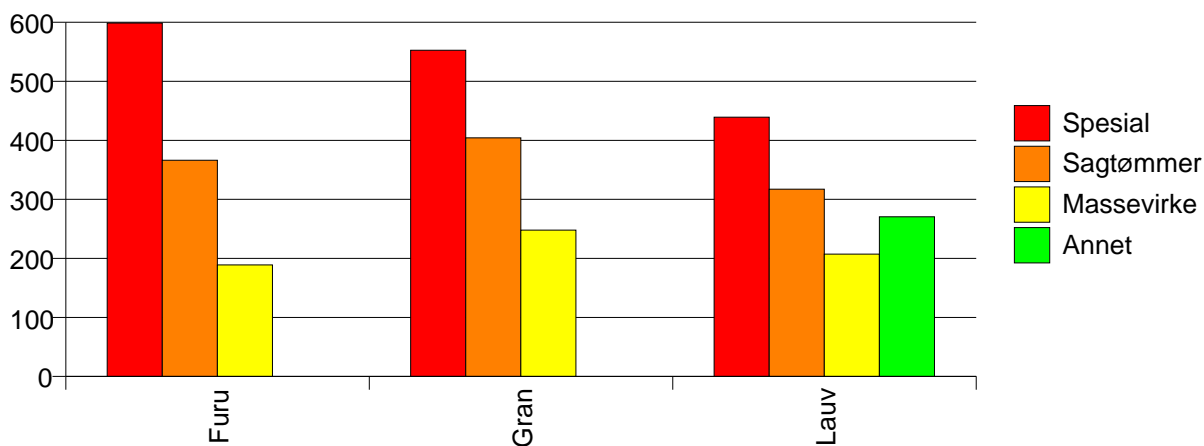
Volum (prosentfordelt)



Gjennomsnittspris (kr/kbm)

	Spesial	Sagtømmer	Massevirke	Annet	Vrak	Snitt
Furu	599	366	189		0	311
Gran	553	404	248		0	310
Lauv	439	317	207	271		227
Snitt	594	383	225	271	0	305

Gjennomsnittspris (kr/kbm)

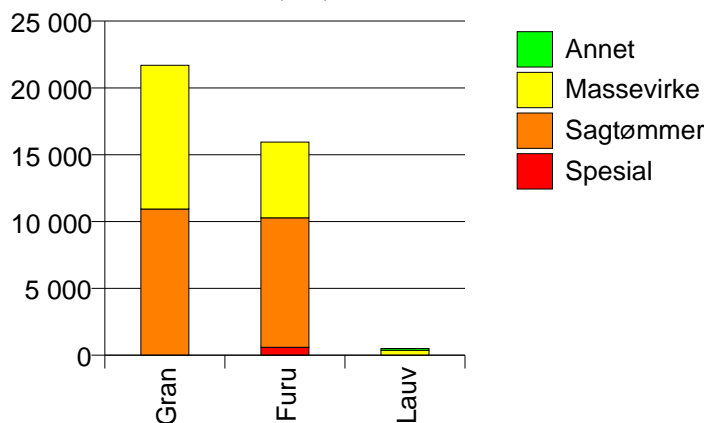


## 819 NOME

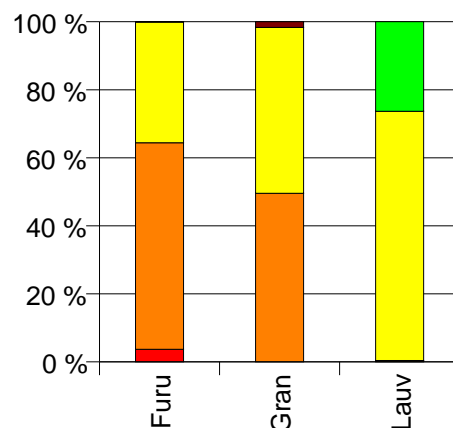
Volum (kbm)

	Spesial	Sagtømmer	Massevirke	Annet	Vrak	Sum:
Furu	590	9 686	5 666		12	15 954
Gran	0	10 934	10 758		371	22 063
Lauv	1	1	370	133		505
Sum:	591	20 621	16 794	133	383	38 522

Volum (kbm)



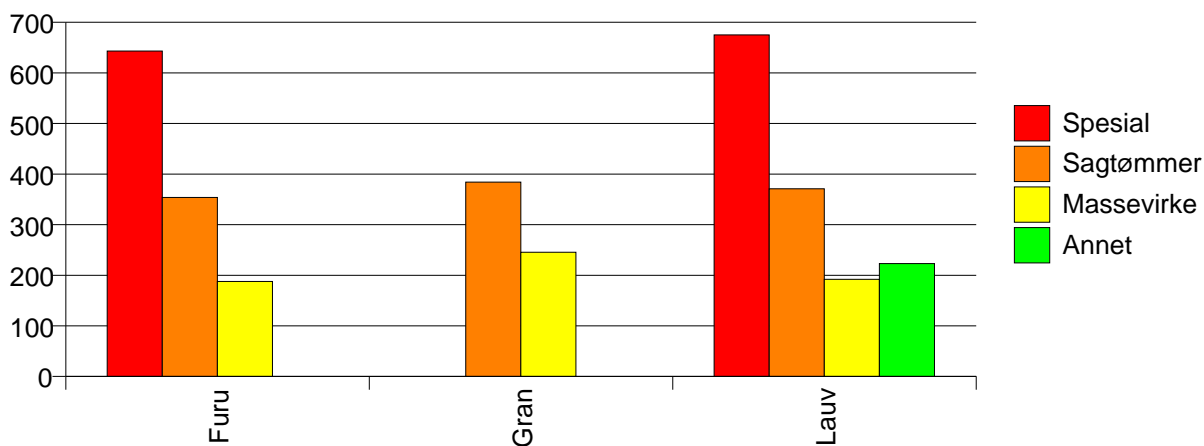
Volum (prosentfordelt)



Gjennomsnittspris (kr/kbm)

	Spesial	Sagtømmer	Massevirke	Annet	Vrak	Snitt
Furu	643	354	188		0	305
Gran	#DIV/0	384	246		0	310
Lauv	675	371	192	223		202
Snitt	643	370	225	223	0	307

Gjennomsnittspris (kr/kbm)

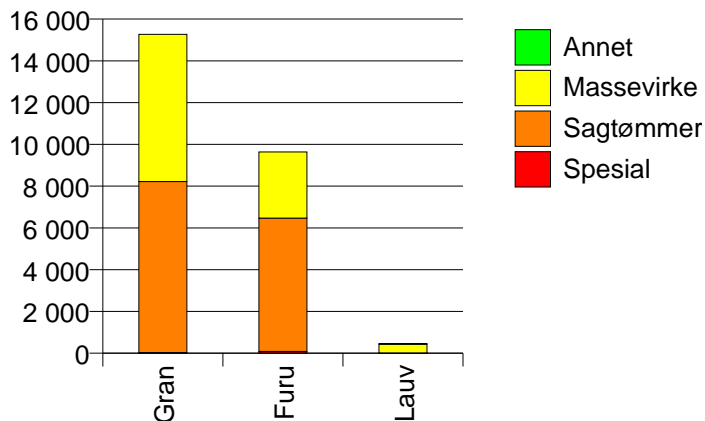


## 821 BØ

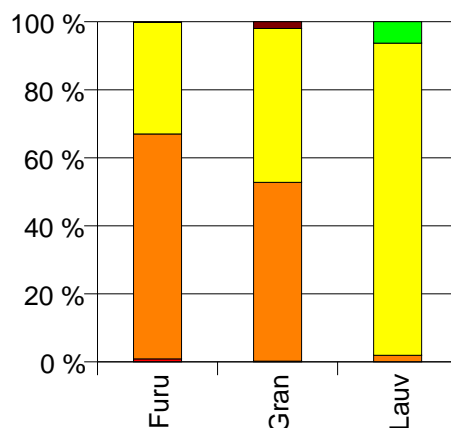
### Volum (kbm)

	Spesial	Sagtømmer	Massevirke	Annet	Vrak	Sum:
Furu	85	6 385	3 166		19	9 655
Gran	36	8 182	7 048		309	15 575
Lauv	0	9	422	29		460
Sum:	121	14 576	10 636	29	328	25 690

Volum (kbm)



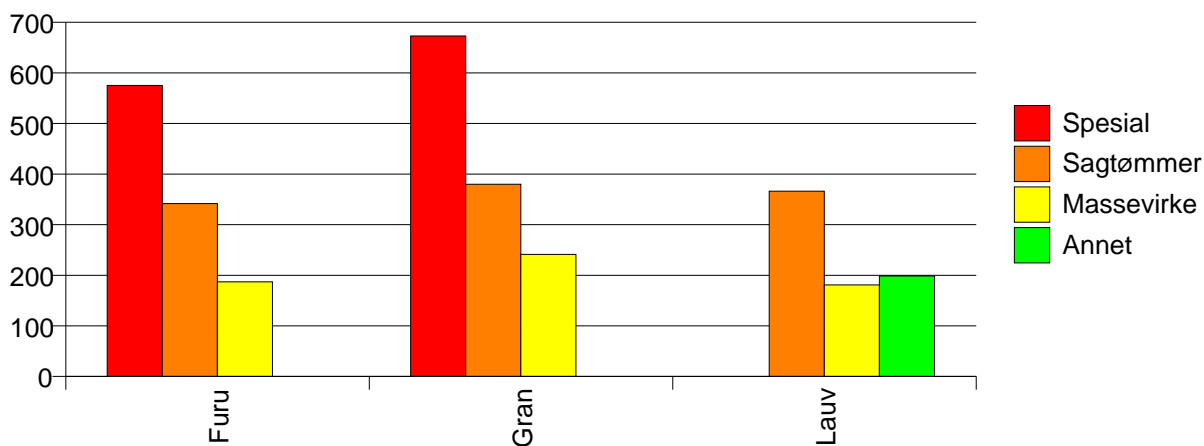
Volum (prosentfordelt)



### Gjennomsnittspris (kr/kbm)

	Spesial	Sagtømmer	Massevirke	Annet	Vrak	Snitt
Furu	575	342	187		0	292
Gran	673	380	241		0	310
Lauv	#DIV/0	366	181	199		186
Snitt	606	363	223	199	0	301

Gjennomsnittspris (kr/kbm)

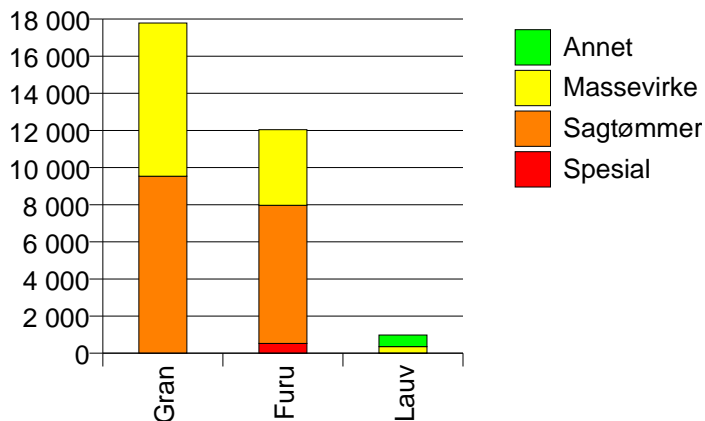


## 822 SAUHERAD

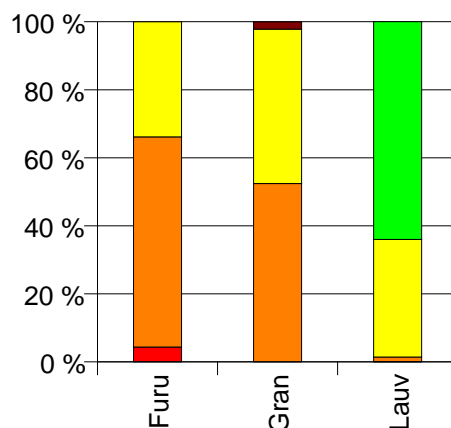
### Volum (kbm)

	Spesial	Sagtømmer	Massevirke	Annet	Vrak	Sum:
Furu	526	7 441	4 076		4	12 047
Gran	0	9 532	8 253		397	18 182
Lauv	1	13	340	629		983
Sum:	527	16 986	12 669	629	401	31 212

Volum (kbm)



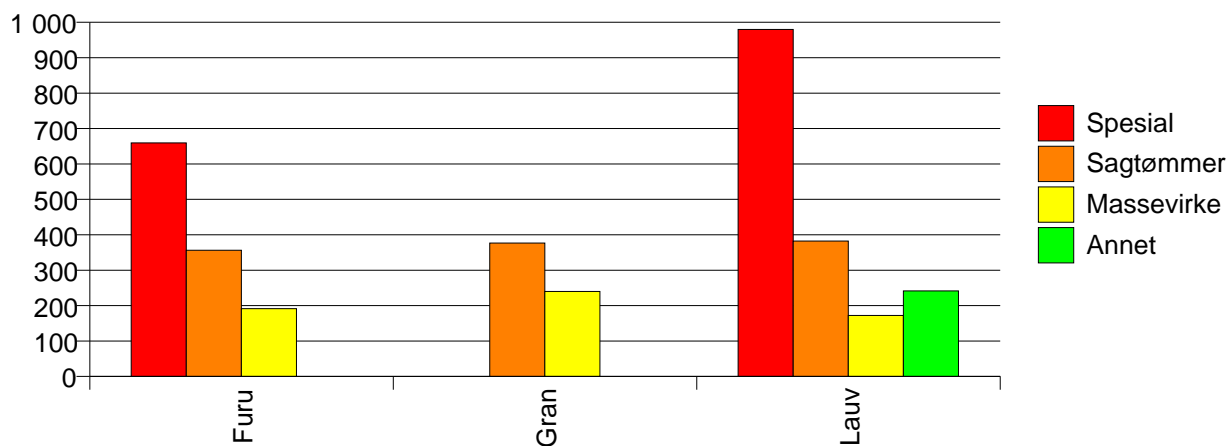
Volum (prosentfordelt)



### Gjennomsnittspris (kr/kbm)

	Spesial	Sagtømmer	Massevirke	Annet	Vrak	Snitt
Furu	659	356	192		0	314
Gran	#DIV/0	377	240		0	306
Lauv	980	382	172	241		220
Snitt	660	368	223	241	0	306

Gjennomsnittspris (kr/kbm)

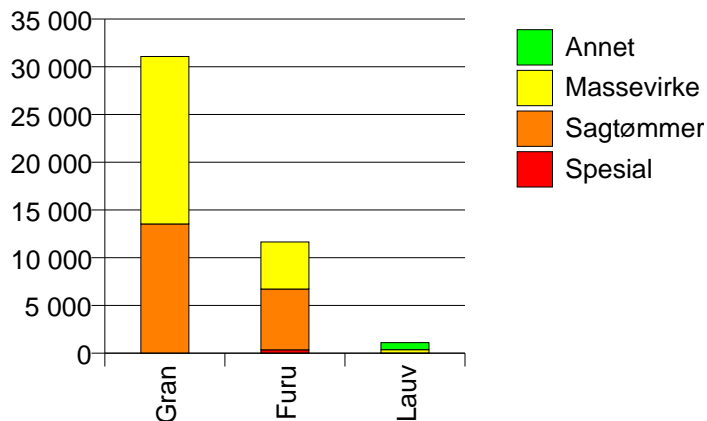


## 826 TINN

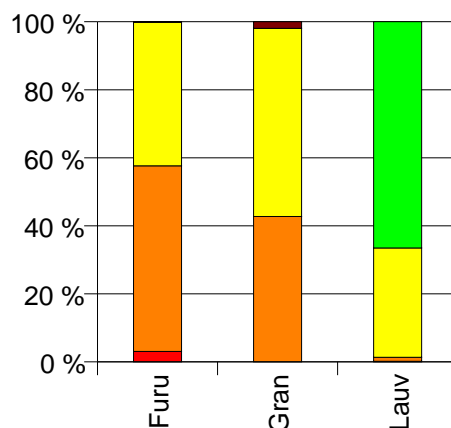
Volum (kbm)

	Spesial	Sagtømmer	Massevirke	Annet	Vrak	Sum:
Furu	359	6 372	4 931		16	11 678
Gran	2	13 545	17 539		614	31 700
Lauv	2	13	359	743		1 117
Sum:	363	19 930	22 829	743	630	44 495

Volum (kbm)



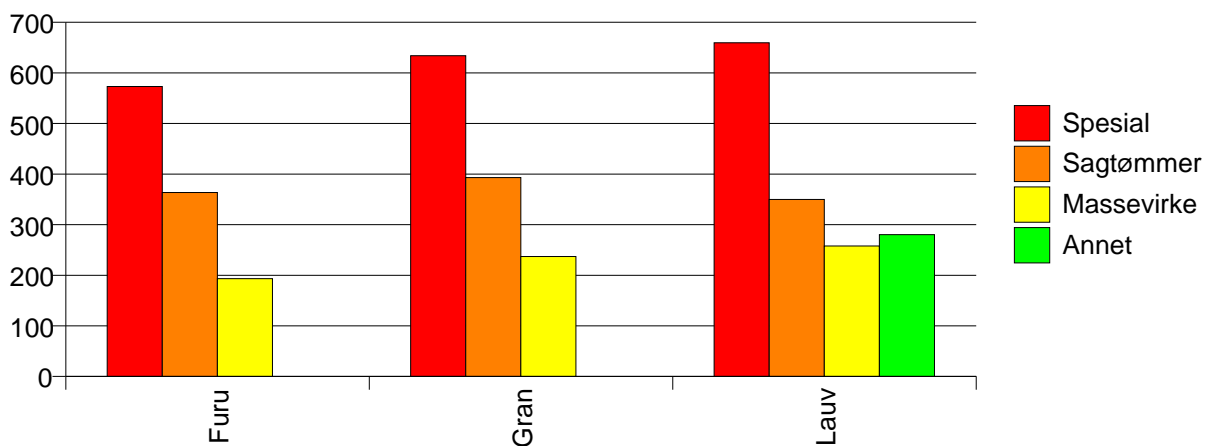
Volum (prosentfordelt)



Gjennomsnittspris (kr/kbm)

	Spesial	Sagtømmer	Massevirke	Annet	Vrak	Snitt
Furu	573	363	193		0	298
Gran	634	393	237		0	299
Lauv	660	350	258	280		275
Snitt	574	384	228	280	0	298

Gjennomsnittspris (kr/kbm)

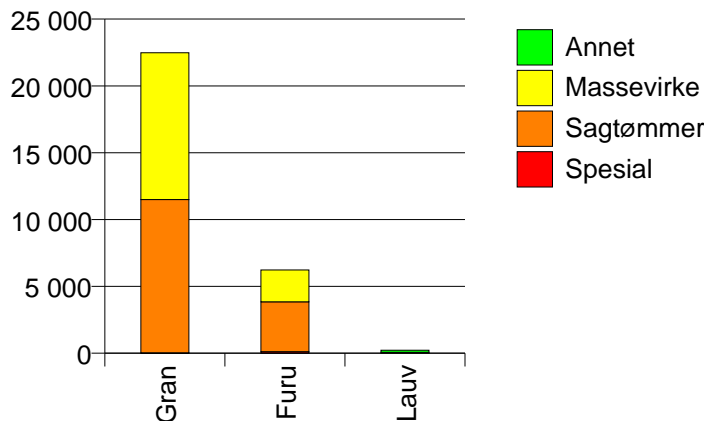


## 827 HJARTDAL

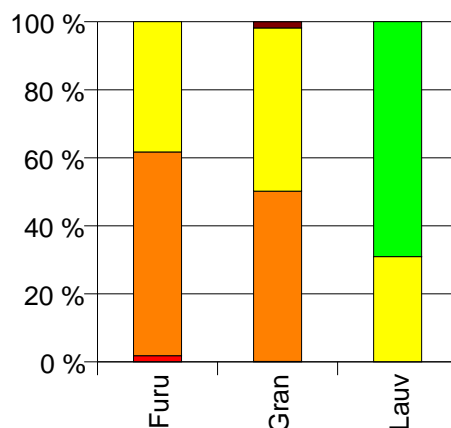
### Volum (kbm)

	Spesial	Sagtømmer	Massevirke	Annet	Vrak	Sum:
Furu	114	3 730	2 385			6 229
Gran	28	11 469	10 989		414	22 900
Lauv	0	0	69	154		223
Sum:	142	15 199	13 443	154	414	29 352

Volum (kbm)



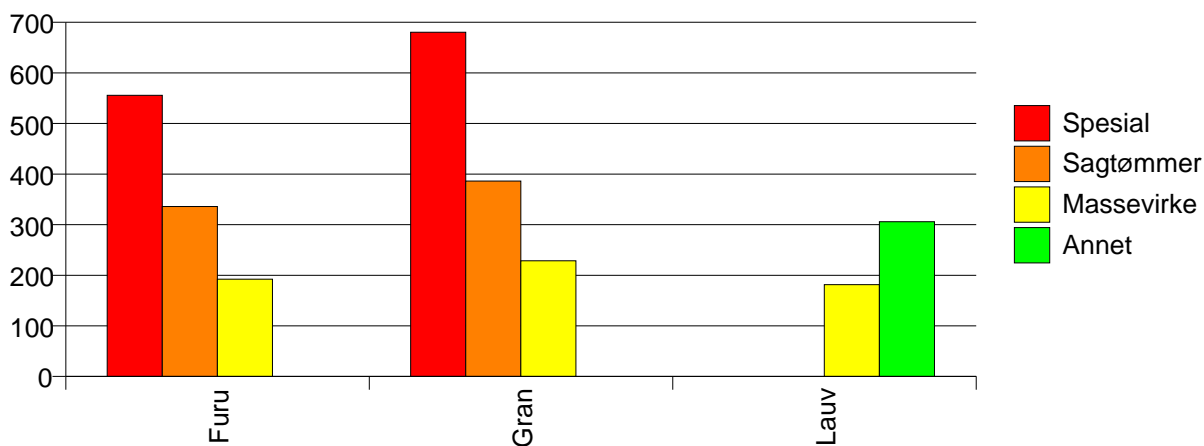
Volum (prosentfordelt)



### Gjennomsnittspris (kr/kbm)

	Spesial	Sagtømmer	Massevirke	Annet	Vrak	Snitt
Furu	556	336	192			285
Gran	680	386	229		0	304
Lauv	#DIV/0	#DIV/0	181	306		267
Snitt	580	374	222	306	0	300

Gjennomsnittspris (kr/kbm)

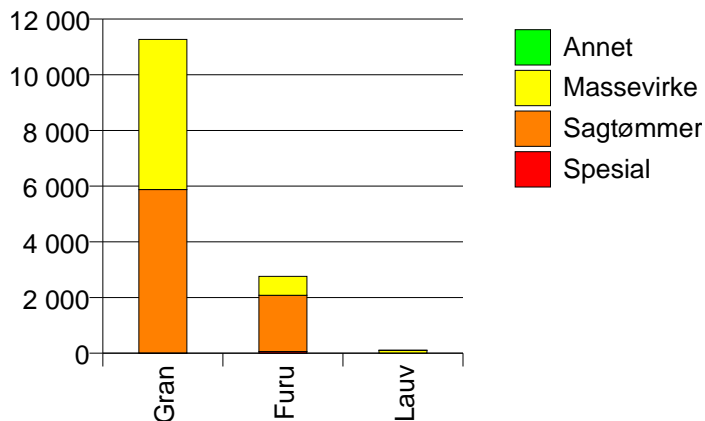


## 828 SELJORD

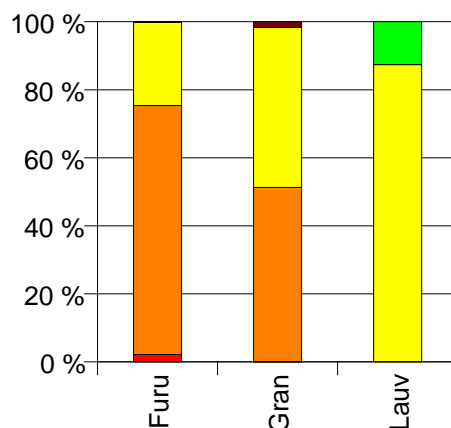
### Volum (kbm)

	Spesial	Sagtømmer	Massevirke	Annet	Vrak	Sum:
Furu	60	2 022	677		4	2 763
Gran	6	5 872	5 391		190	11 459
Lauv			97	14		111
Sum:	66	7 894	6 165	14	194	14 333

Volum (kbm)



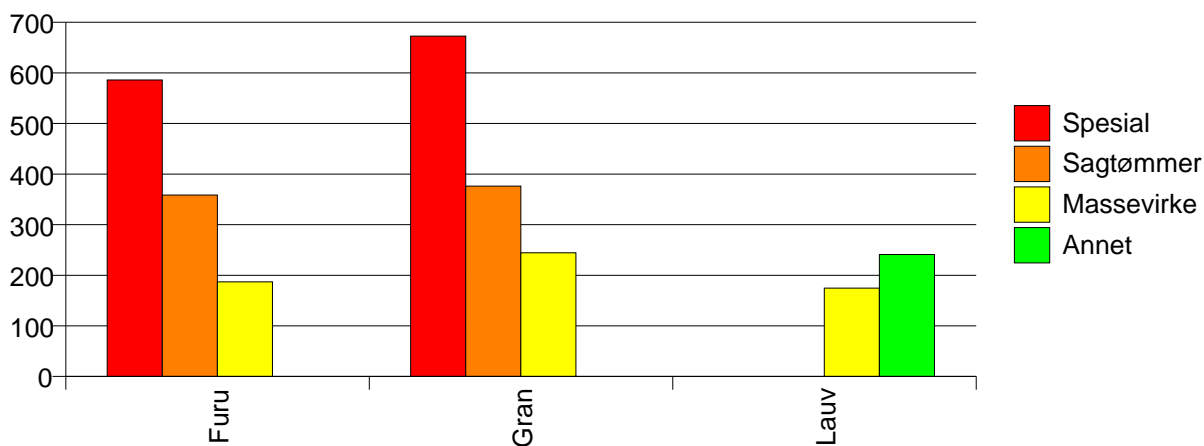
Volum (prosentfordelt)



### Gjennomsnittspris (kr/kbm)

	Spesial	Sagtømmer	Massevirke	Annet	Vrak	Snitt
Furu	586	358	187		0	321
Gran	673	376	244		0	308
Lauv			175	241		183
Snitt	594	372	237	241	0	310

Gjennomsnittspris (kr/kbm)

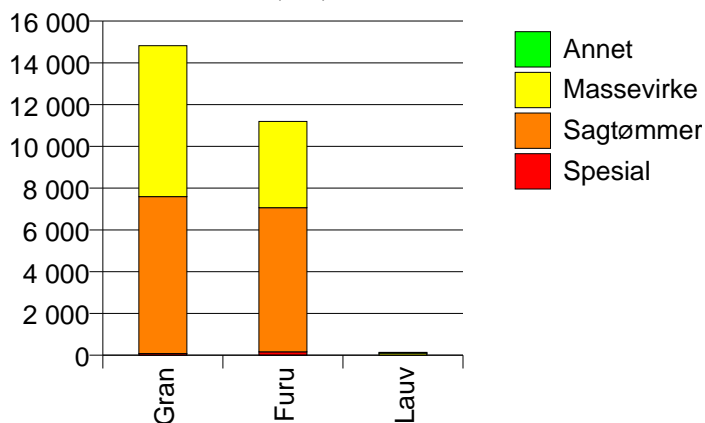


## 829 KVITSEID

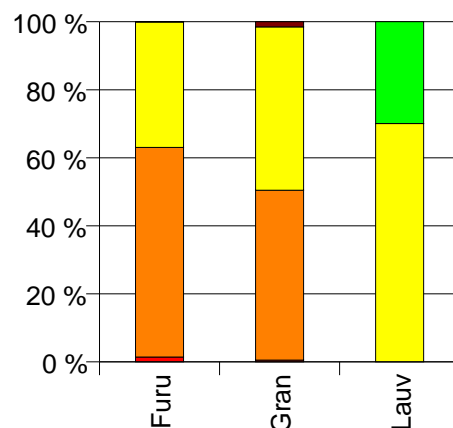
### Volum (kbm)

	Spesial	Sagtømmer	Massevirke	Annet	Vrak	Sum:
Furu	160	6 905	4 131		7	11 203
Gran	80	7 515	7 228		230	15 053
Lauv	0	0	96	41		137
Sum:	240	14 420	11 455	41	237	26 393

Volum (kbm)



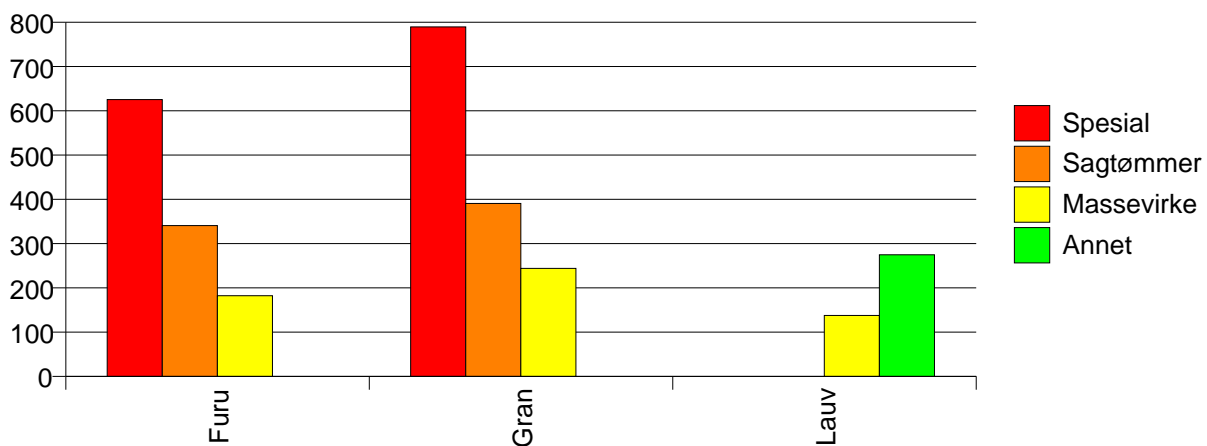
Volum (prosentfordelt)



### Gjennomsnittspris (kr/kbm)

	Spesial	Sagtømmer	Massevirke	Annet	Vrak	Snitt
Furu	625	341	182		0	286
Gran	790	391	244		0	317
Lauv	#DIV/0	#DIV/0	138	275		179
Snitt	680	367	221	275	0	303

Gjennomsnittspris (kr/kbm)



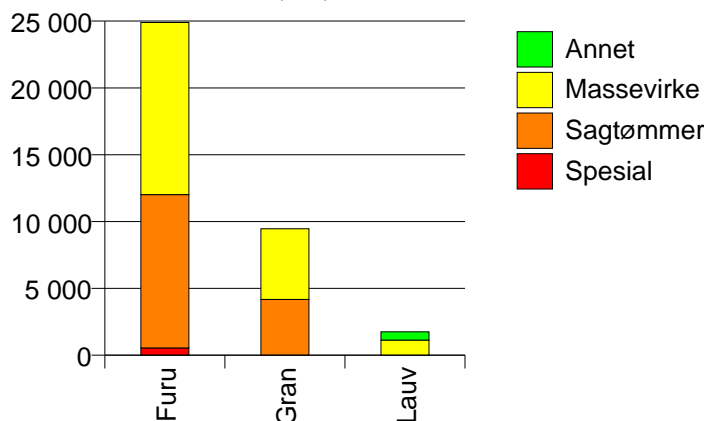


## 830 NISSEDAL

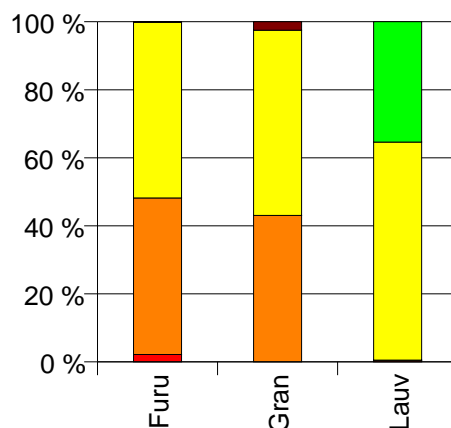
### Volum (kbm)

	Spesial	Sagtømmer	Massevirke	Annet	Vrak	Sum:
Furu	539	11 481	12 874		38	24 932
Gran	0	4 178	5 286		240	9 704
Lauv	8	1	1 122	619		1 750
Sum:	547	15 660	19 282	619	278	36 386

Volum (kbm)



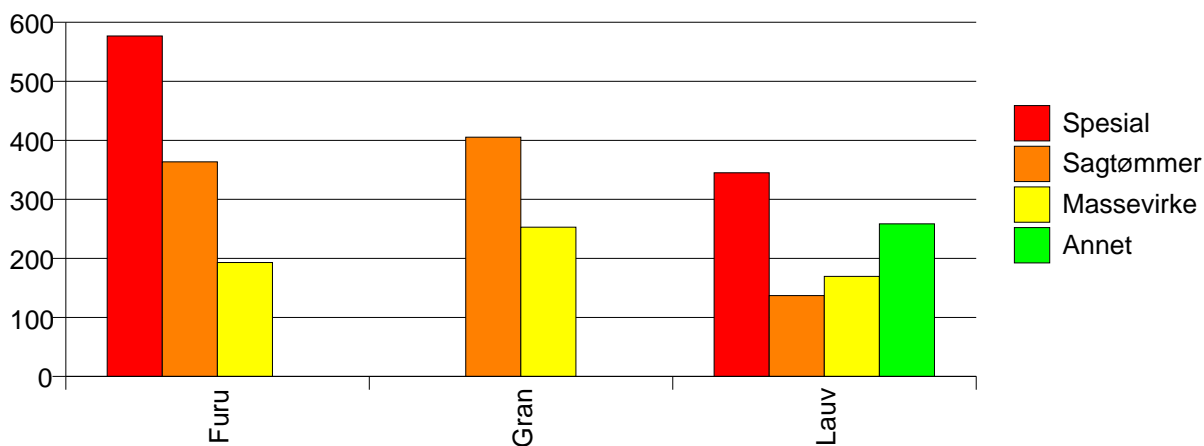
Volum (prosentfordelt)



### Gjennomsnittspris (kr/kbm)

	Spesial	Sagtømmer	Massevirke	Annet	Vrak	Snitt
Furu	577	364	193		0	280
Gran	#DIV/0	405	253		0	312
Lauv	345	137	169	259		202
Snitt	574	375	208	259	0	285

Gjennomsnittspris (kr/kbm)

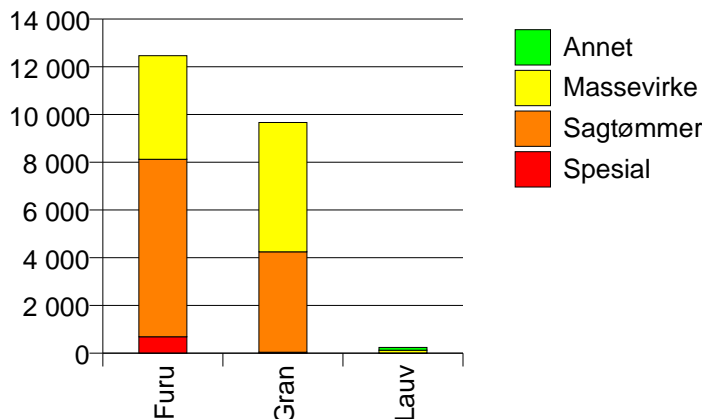


## 831 FYRESDAL

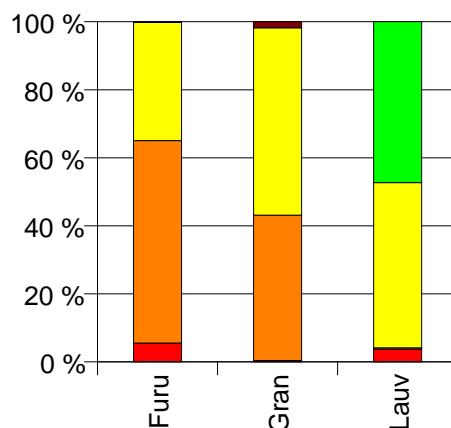
### Volum (kbm)

	Spesial	Sagtømmer	Massevirke	Annet	Vrak	Sum:
Furu	691	7 432	4 343		20	12 486
Gran	41	4 207	5 418		177	9 843
Lauv	9	1	117	114		241
Sum:	741	11 640	9 878	114	197	22 570

Volum (kbm)



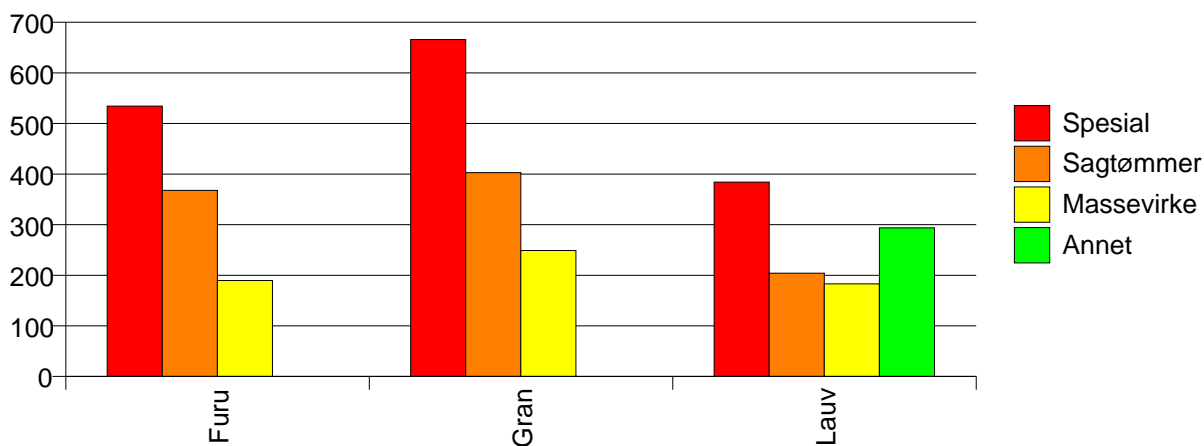
Volum (prosentfordelt)



### Gjennomsnittspris (kr/kbm)

	Spesial	Sagtømmer	Massevirke	Annet	Vrak	Snitt
Furu	534	368	190		0	314
Gran	666	403	249		0	312
Lauv	384	204	183	294		243
Snitt	540	381	222	294	0	313

Gjennomsnittspris (kr/kbm)

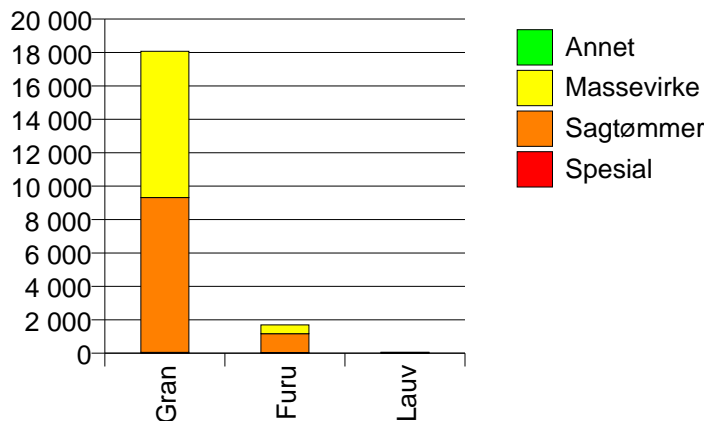


## 833 TOKKE

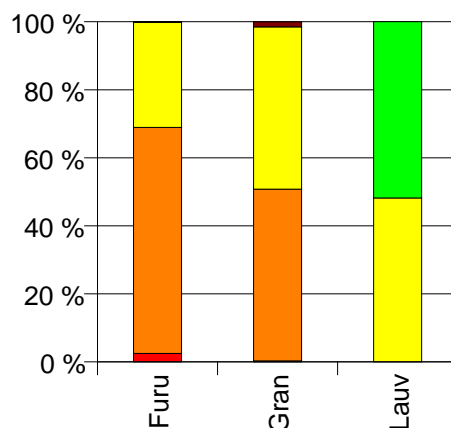
Volum (kbm)

	Spesial	Sagtømmer	Massevirke	Annet	Vrak	Sum:
Furu	42	1 129	525		3	1 699
Gran	51	9 265	8 754		277	18 347
Lauv			27	29		56
Sum:	93	10 394	9 306	29	280	20 102

Volum (kbm)



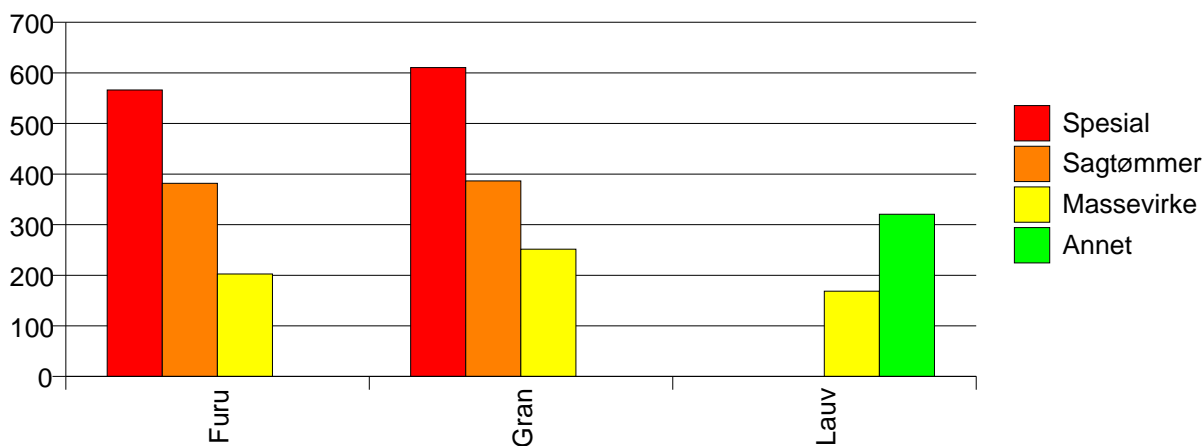
Volum (prosentfordelt)



Gjennomsnittspris (kr/kbm)

	Spesial	Sagtømmer	Massevirke	Annet	Vrak	Snitt
Furu	566	382	203		0	330
Gran	610	387	252		0	317
Lauv			169	321		247
Snitt	590	386	249	321	0	318

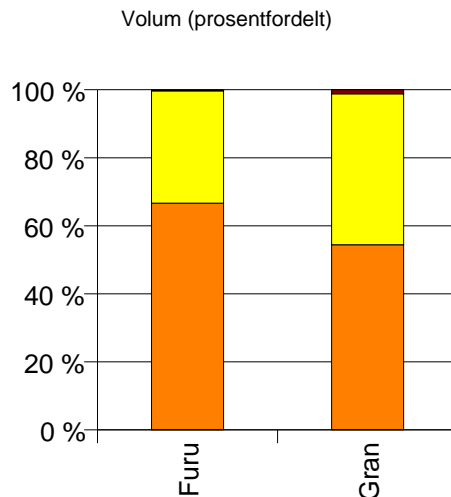
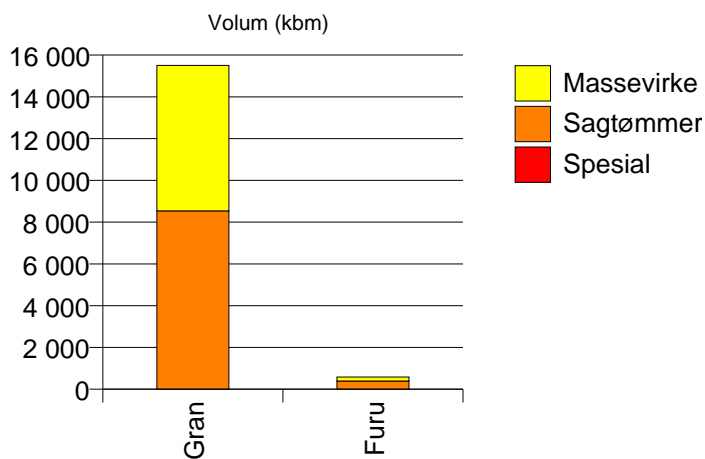
Gjennomsnittspris (kr/kbm)



## 834 VINJE

### Volum (kbm)

	Spesial	Sagtømmer	Massevirke	Vrak	Sum:
Furu	0	392	194	2	588
Gran		8 542	6 961	189	15 692
Sum:	0	8 934	7 155	191	16 280



### Gjennomsnittspris (kr/kbm)

	Spesial	Sagtømmer	Massevirke	Vrak	Snitt
Furu	#DIV/0	354	195	0	301
Gran		377	246	0	314
Snitt	#DIV/0	376	244	0	314

