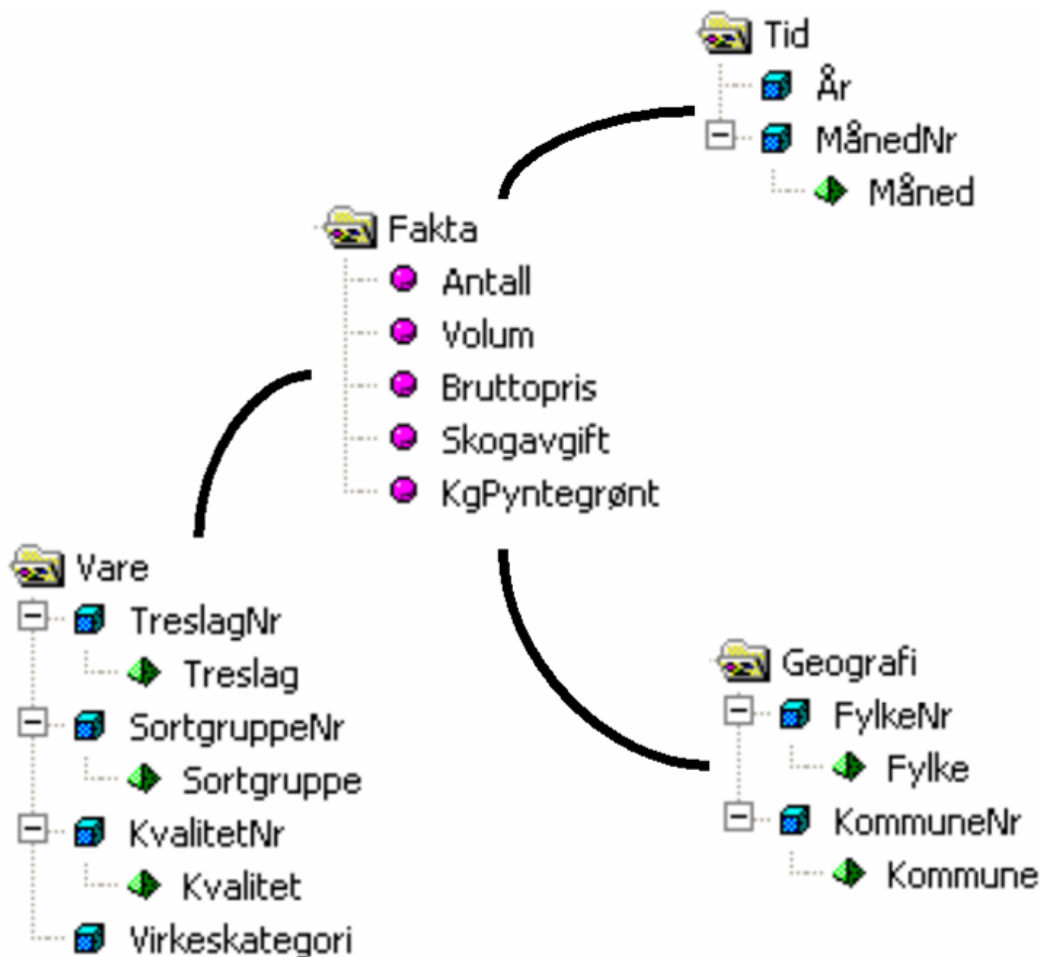


Virkestatistikk fra SKOG-DATA AS

m/kommuner



Dataene i rapporten er hentet fra databasen som inneholder virkesdata med tilhørende innbetalinger av skogavgift. Rapporten er laget med Business Objects, som er sluttbrukerverktøyet i Skog-Data sine nye datavarehus-løsninger. Business Objects er ett meget sterkt rapportverktøy som kan presentere store mengder data effektivt.

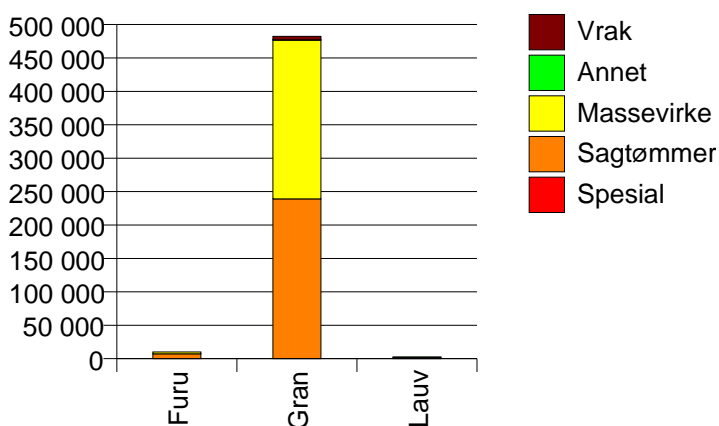
Rapportene kan lastes ned fra www.skogdata.no/statistikk

For mer informasjon, kontakt: alexanderh@skogdata.no

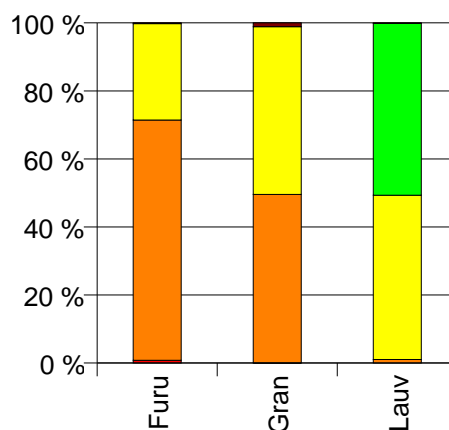
Volum

	Spesial	Sagtømmer	Massevirke	Annet	Vrak	Sum:
Furu	81	7 166	2 875		20	10 142
Gran	304	238 883	237 857	23	5 297	482 364
Lauv		29	1 338	1 399	5	2 771
Sum:	385	246 078	242 070	1 422	5 322	495 277

Volum (kbm)



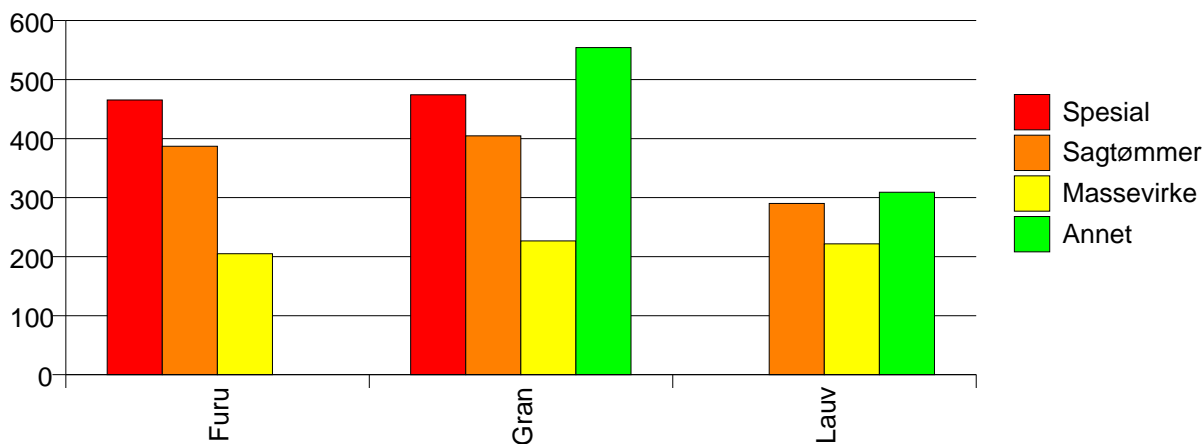
Volum (prosentfordelt)



Gjennomsnittspris (kr/kbm)

	Spesial	Sagtømmer	Massevirke	Annet	Vrak	Snitt:
Furu	465	387	205		0	335
Gran	474	405	227	554	0	313
Lauv		290	222	309	0	266
Snitt:	472	404	226	313	0	313

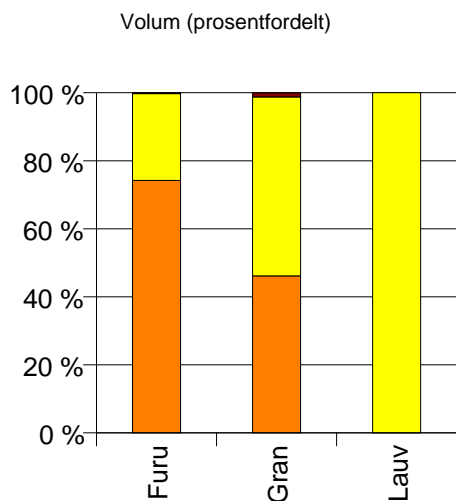
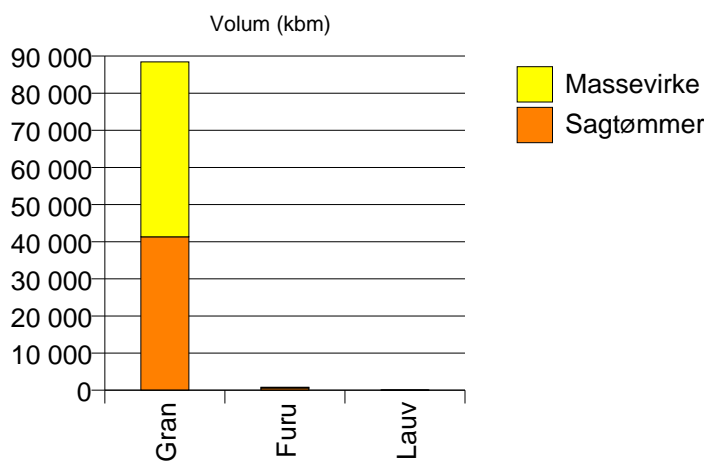
Gjennomsnittspris (kr/kbm)



1702 STEINKJER

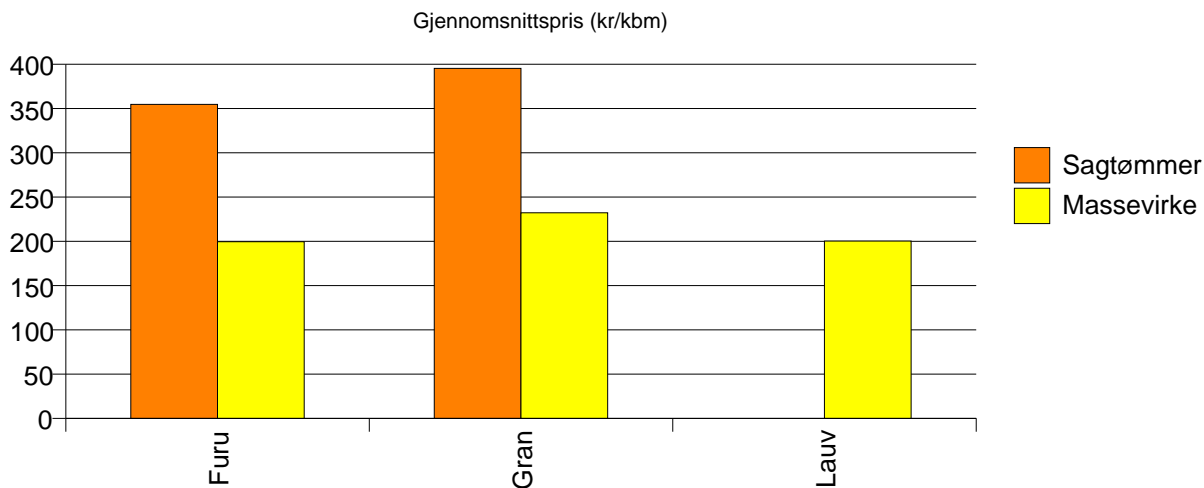
Volum (kbm)

	Sagtømmer	Massevirke	Vrak	Sum:
Furu	605	208	2	815
Gran	41 313	47 112	1 094	89 519
Lauv		41		41
Sum:	41 918	47 361	1 096	90 375



Gjennomsnittspris (kr/kbm)

	Sagtømmer	Massevirke	Vrak	Snitt
Furu	355	200	0	314
Gran	395	232	0	305
Lauv		200		200
Snitt	395	232	0	305

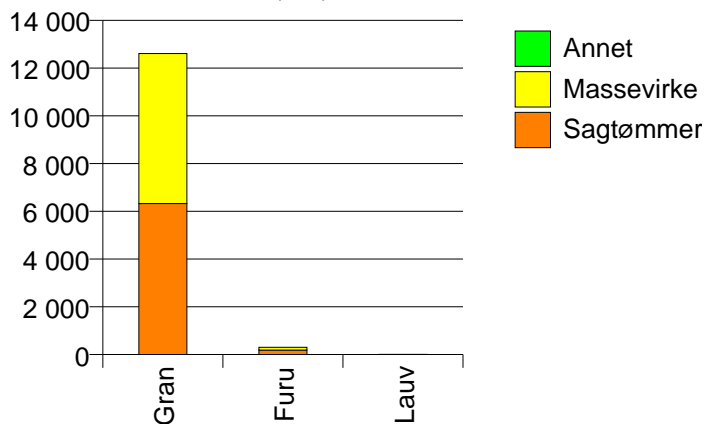


1703 NAMSOS

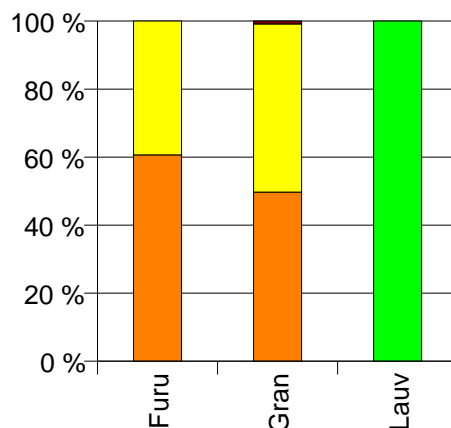
Volum (kbm)

	Sagtømmer	Massevirke	Annet	Vrak	Sum:
Furu	185	120			305
Gran	6 325	6 286		107	12 718
Lauv			9		9
Sum:	6 510	6 406	9	107	13 032

Volum (kbm)



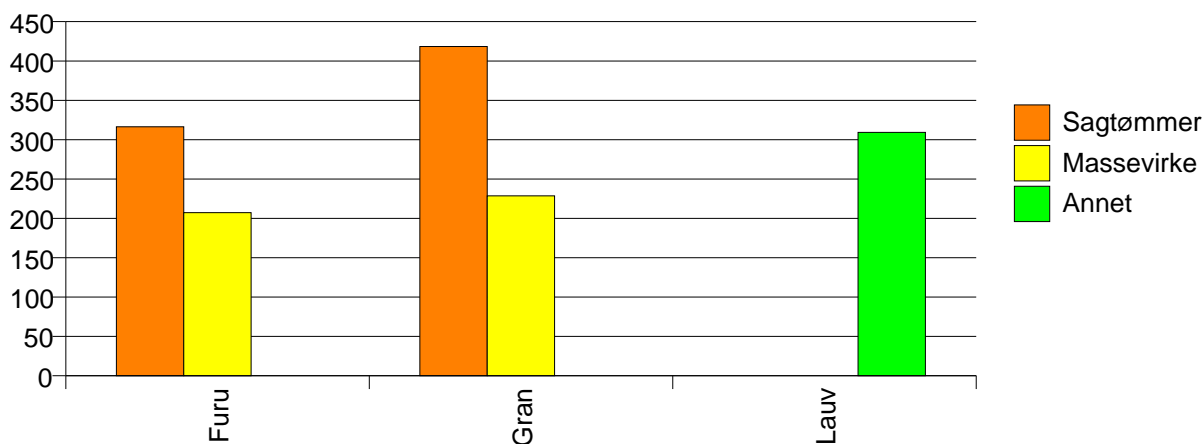
Volum (prosentfordelt)



Gjennomsnittspris (kr/kbm)

	Sagtømmer	Massevirke	Annet	Vrak	Snitt
Furu	316	207			273
Gran	418	229		0	321
Lauv			309		309
Snitt	416	228	309	0	320

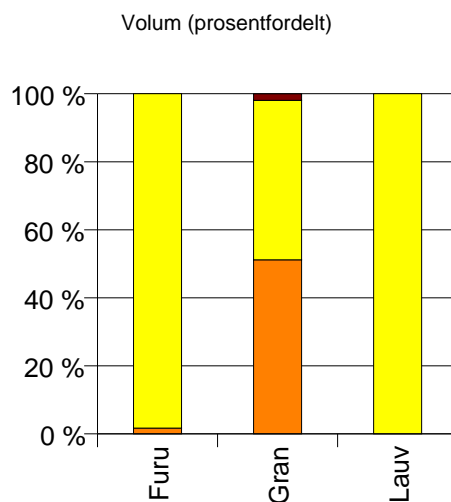
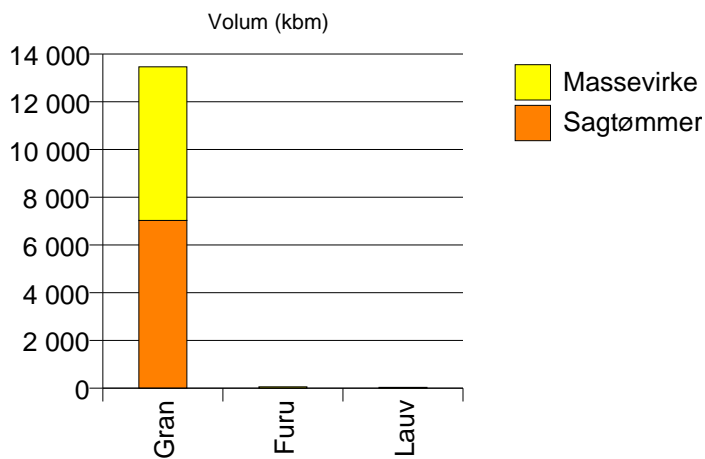
Gjennomsnittspris (kr/kbm)



1711 MERÅKER

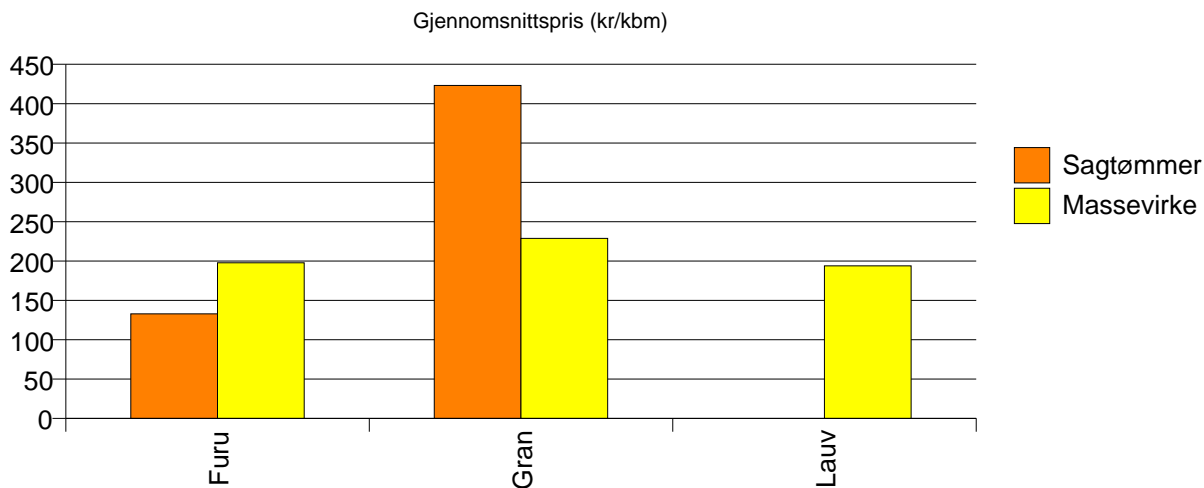
Volum (kbm)

	Sagtømmer	Massevirke	Vrak	Sum:
Furu	1	58		59
Gran	7 030	6 438	268	13 736
Lauv		38		38
Sum:	7 031	6 534	268	13 833



Gjennomsnittspris (kr/kbm)

	Sagtømmer	Massevirke	Vrak	Snitt
Furu	133	198		197
Gran	423	229	0	324
Lauv		194		194
Snitt	423	228	0	323

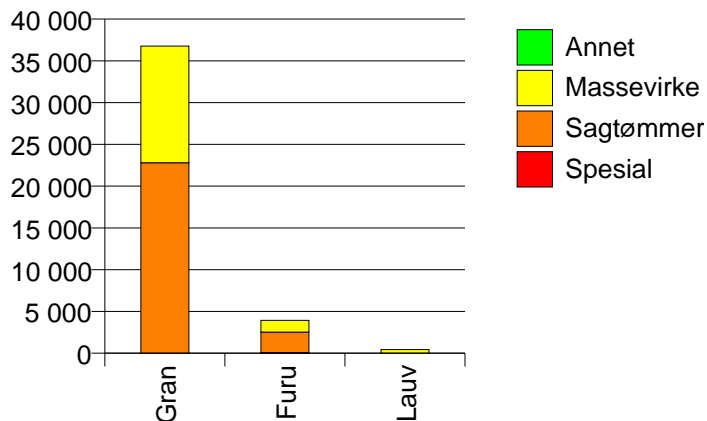


1714 STJØRDAL

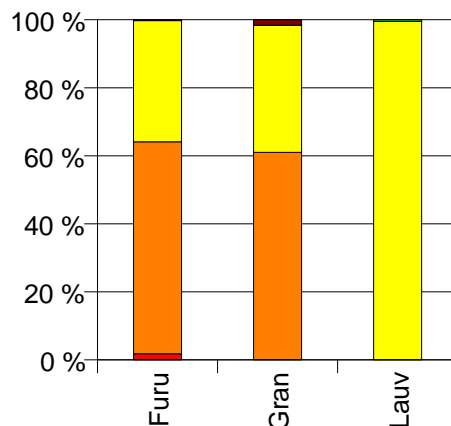
Volum (kbm)

	Spesial	Sagtømmer	Massevirke	Annet	Vrak	Sum:
Furu	70	2 463	1 408		10	3 951
Gran		22 801	13 970		604	37 375
Lauv			434	2		436
Sum:	70	25 264	15 812	2	614	41 762

Volum (kbm)



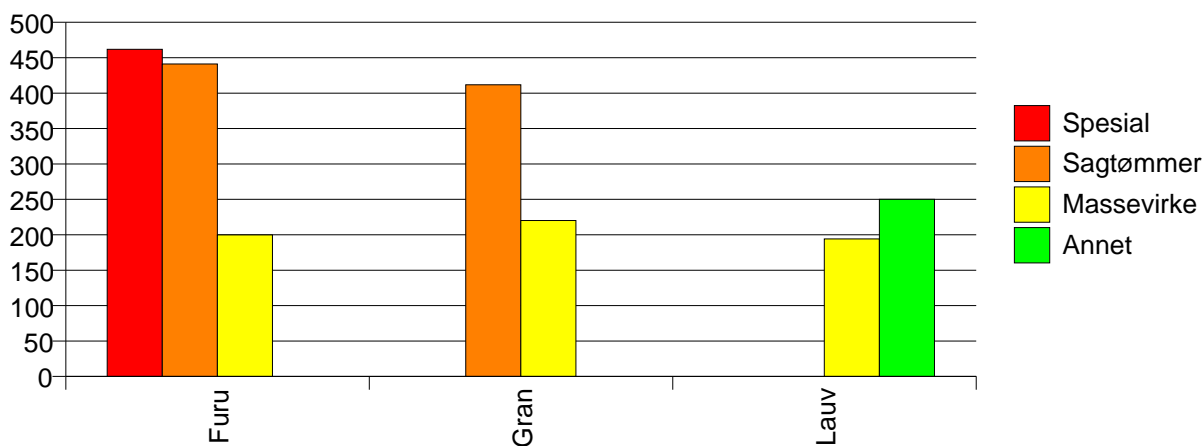
Volum (prosentfordelt)



Gjennomsnittspris (kr/kbm)

	Spesial	Sagtømmer	Massevirke	Annet	Vrak	Snitt
Furu	462	441	200		0	354
Gran		412	220		0	334
Lauv			194	250		194
Snitt	462	415	218	250	0	334

Gjennomsnittspris (kr/kbm)

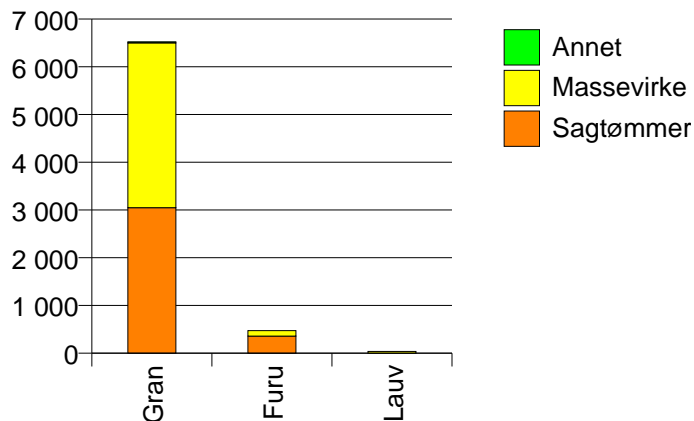


1717 FROSTA

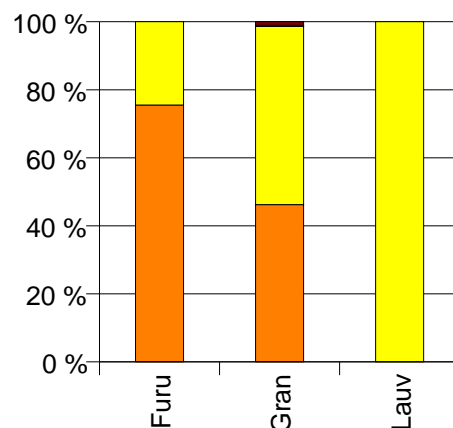
Volum (kbm)

	Sagtømmer	Massevirke	Annet	Vrak	Sum:
Furu	358	116			474
Gran	3 049	3 451	23	69	6 592
Lauv		39			39
Sum:	3 407	3 606	23	69	7 105

Volum (kbm)



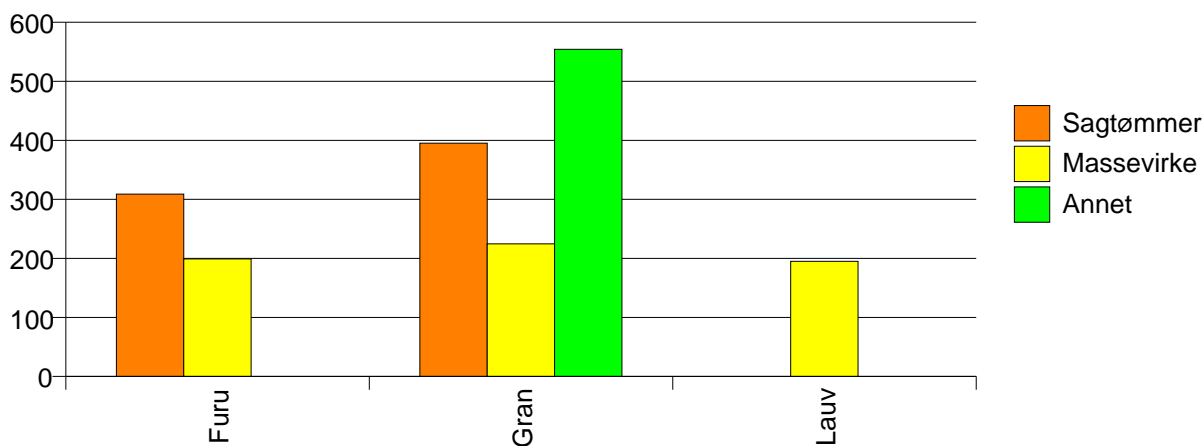
Volum (prosentfordelt)



Gjennomsnittspris (kr/kbm)

	Sagtømmer	Massevirke	Annet	Vrak	Snitt
Furu	309	199			282
Gran	395	225	554	0	302
Lauv		195			195
Snitt	386	224	554	0	300

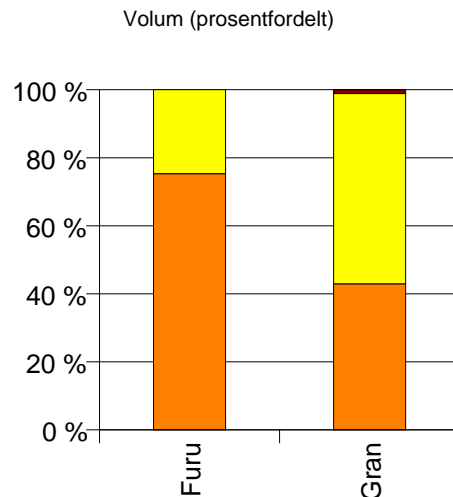
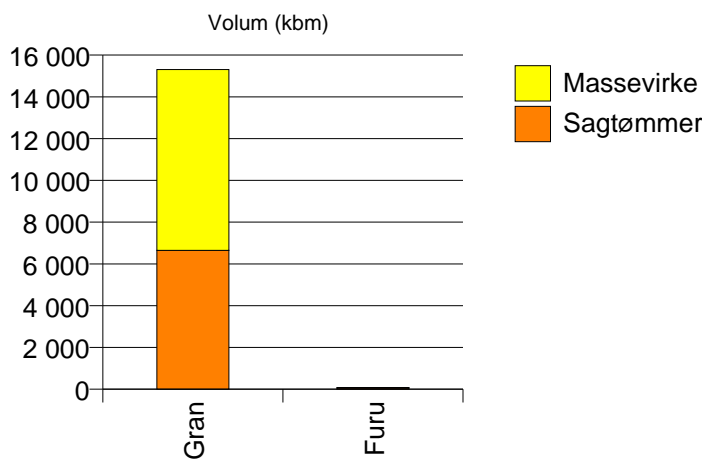
Gjennomsnittspris (kr/kbm)



1718 LEKSVIK

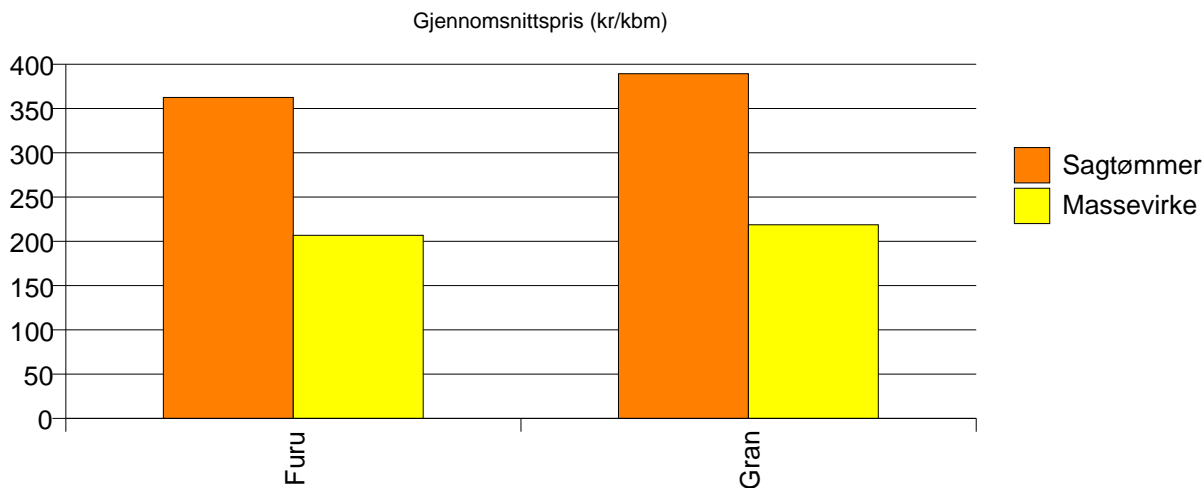
Volum (kbm)

	Sagtømmer	Massevirke	Vrak	Sum:
Furu	61	20		81
Gran	6 650	8 658	171	15 479
Sum:	6 711	8 678	171	15 560



Gjennomsnittspris (kr/kbm)

	Sagtømmer	Massevirke	Vrak	Snitt
Furu	363	207		324
Gran	389	219	0	290
Snitt	389	219	0	290

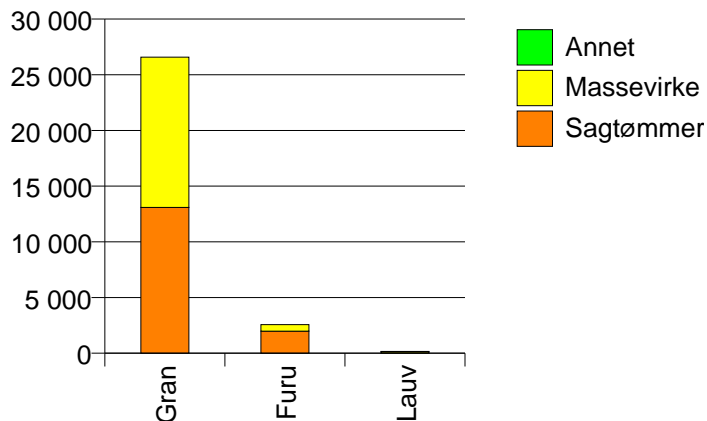


1719 LEVANGER

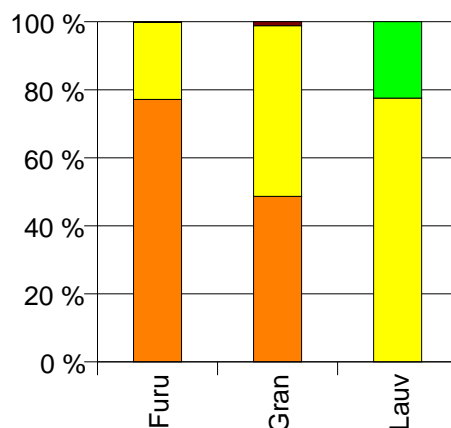
Volum (kbm)

	Sagtømmer	Massevirke	Annet	Vrak	Sum:
Furu	1 986	582		6	2 574
Gran	13 090	13 498		306	26 894
Lauv		121	35		156
Sum:	15 076	14 201	35	312	29 624

Volum (kbm)



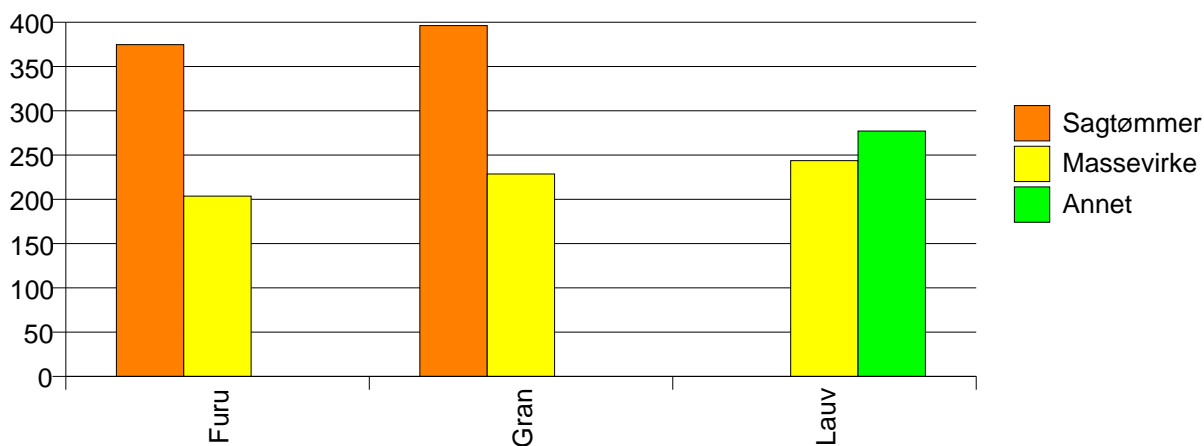
Volum (prosentfordelt)



Gjennomsnittspris (kr/kbm)

	Sagtømmer	Massevirke	Annet	Vrak	Snitt
Furu	375	204		0	335
Gran	396	229		0	308
Lauv		244	277		251
Snitt	393	228	277	0	310

Gjennomsnittspris (kr/kbm)

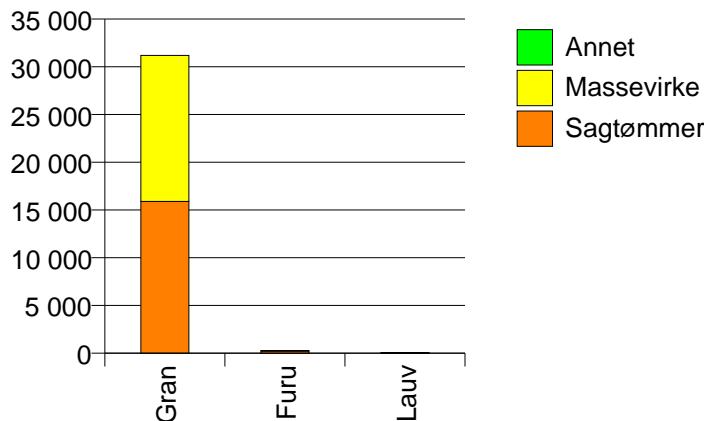


1721 VERDAL

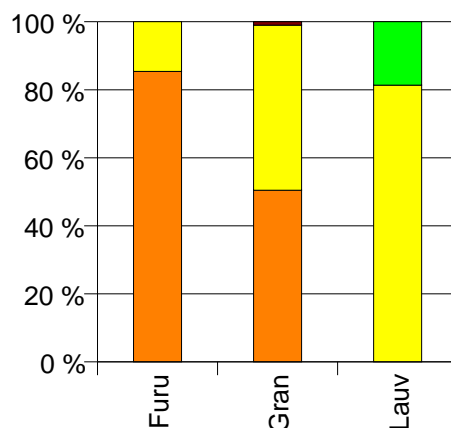
Volum (kbm)

	Sagtømmer	Massevirke	Annet	Vrak	Sum:
Furu	228	39			267
Gran	15 898	15 290		311	31 499
Lauv		48	11		59
Sum:	16 126	15 377	11	311	31 825

Volum (kbm)



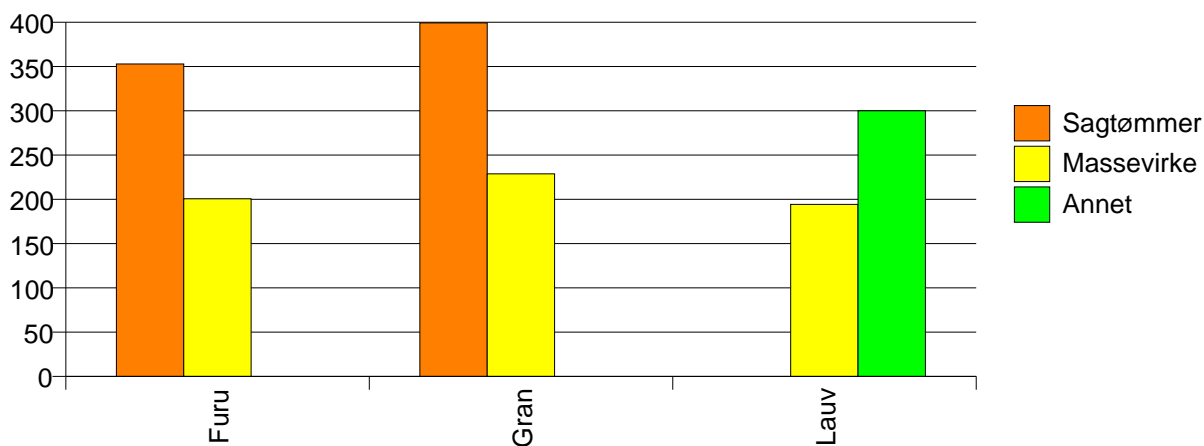
Volum (prosentfordelt)



Gjennomsnittspris (kr/kbm)

	Sagtømmer	Massevirke	Annet	Vrak	Snitt
Furu	353	201			331
Gran	399	229		0	313
Lauv		194	300		214
Snitt	399	229	300	0	313

Gjennomsnittspris (kr/kbm)

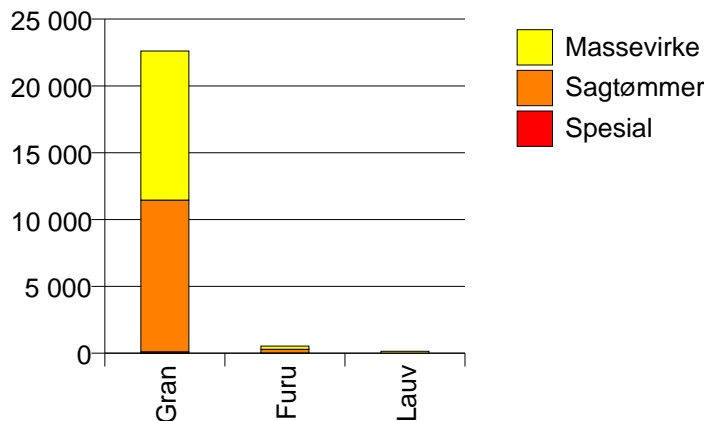


1723 MOSVIK

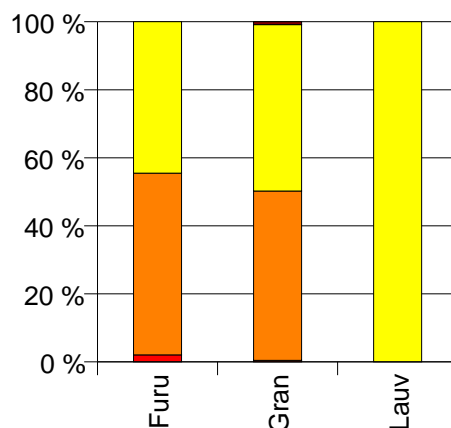
Volum (kbm)

	Spesial	Sagtømmer	Massevirke	Vrak	Sum:
Furu	11	283	236		530
Gran	100	11 357	11 151	194	22 802
Lauv			146		146
Sum:	111	11 640	11 533	194	23 478

Volum (kbm)



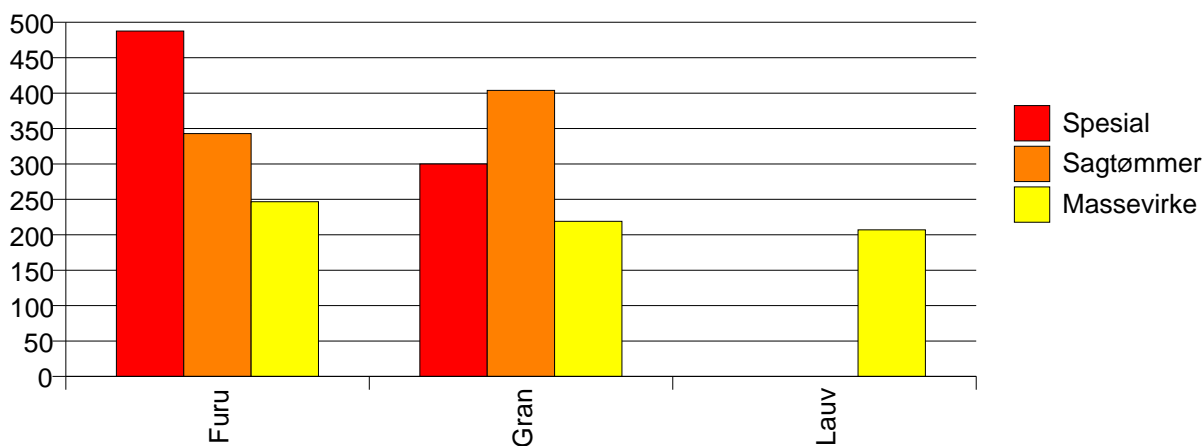
Volum (prosentfordelt)



Gjennomsnittspris (kr/kbm)

	Spesial	Sagtømmer	Massevirke	Vrak	Snitt
Furu	488	343	247		303
Gran	300	404	219	0	310
Lauv			207		207
Snitt	319	402	219	0	309

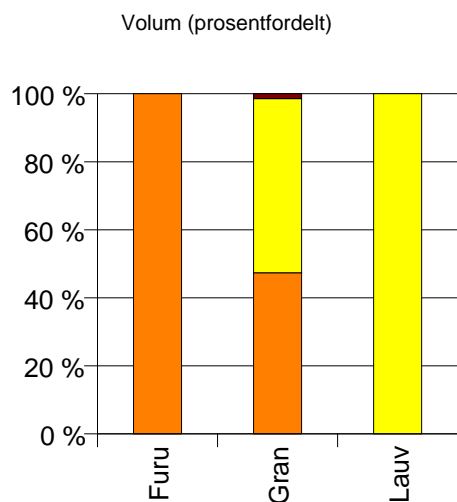
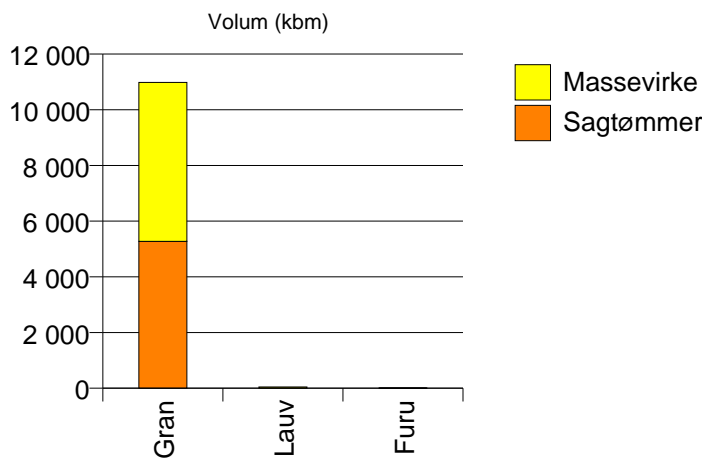
Gjennomsnittspris (kr/kbm)



1724 VERRAN

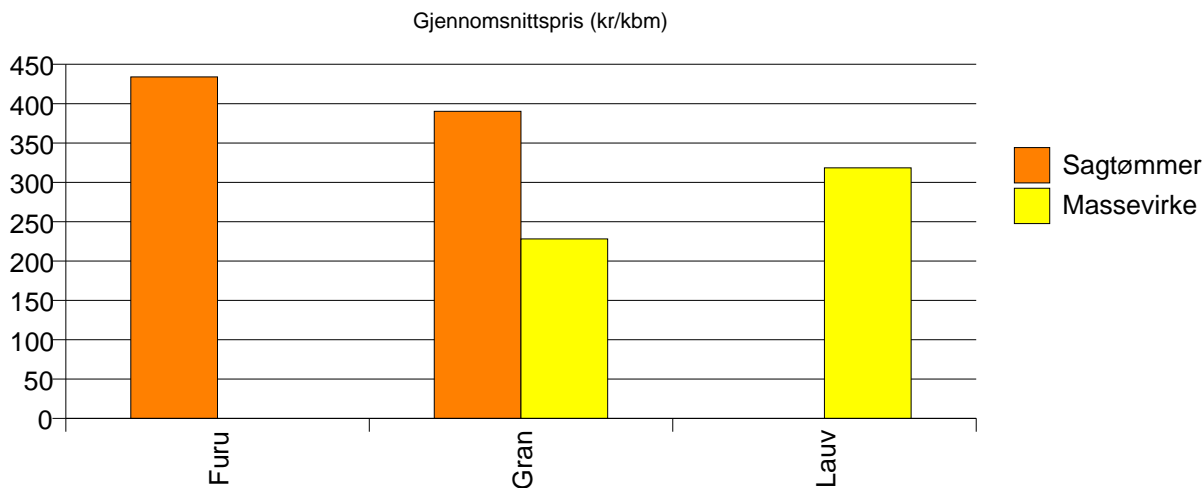
Volum (kbm)

	Sagtømmer	Massevirke	Vrak	Sum:
Furu	6			6
Gran	5 276	5 707	158	11 141
Lauv		47		47
Sum:	5 282	5 754	158	11 194



Gjennomsnittspris (kr/kbm)

	Sagtømmer	Massevirke	Vrak	Snitt
Furu	434			434
Gran	390	228	0	302
Lauv		318		318
Snitt	390	229	0	302

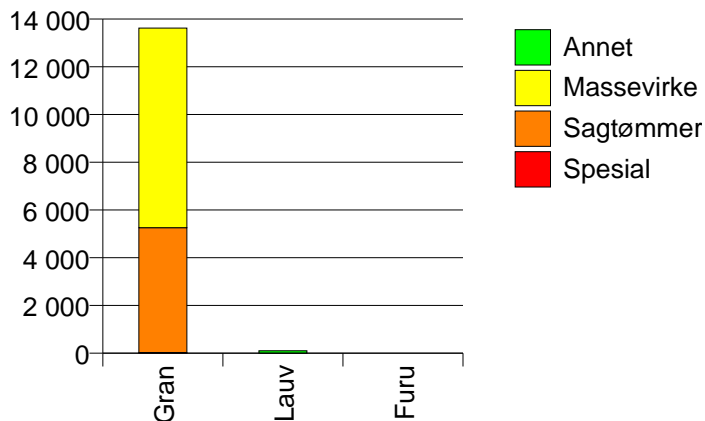


1725 NAMDALSEID

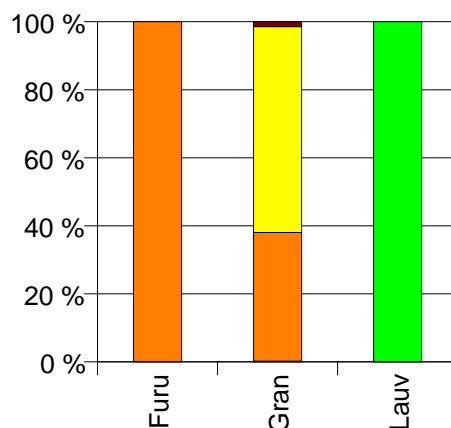
Volum (kbm)

	Spesial	Sagtømmer	Massevirke	Annet	Vrak	Sum:
Furu		2				2
Gran	30	5 227	8 364		199	13 820
Lauv				102		102
Sum:	30	5 229	8 364	102	199	13 924

Volum (kbm)



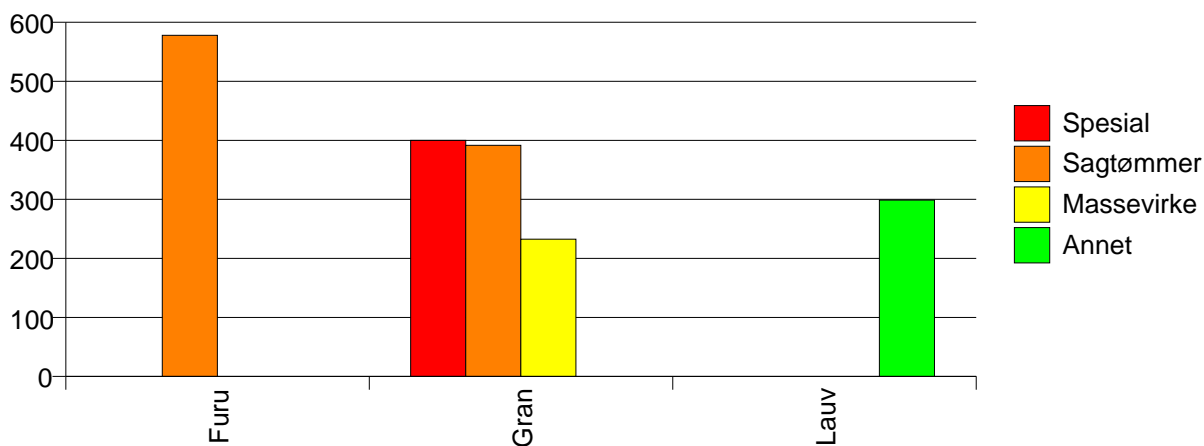
Volum (prosentfordelt)



Gjennomsnittspris (kr/kbm)

	Spesial	Sagtømmer	Massevirke	Annet	Vrak	Snitt
Furu		578				578
Gran	400	392	233		0	290
Lauv				299		299
Snitt	400	392	233	299	0	290

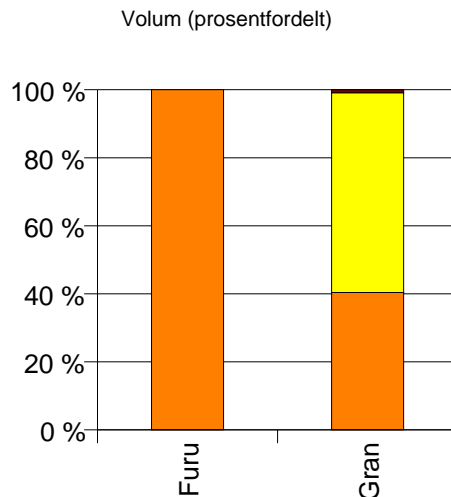
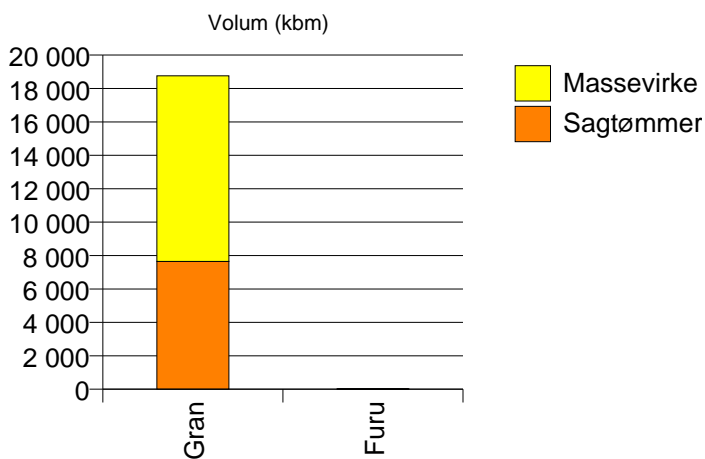
Gjennomsnittspris (kr/kbm)



1729 INDERØY

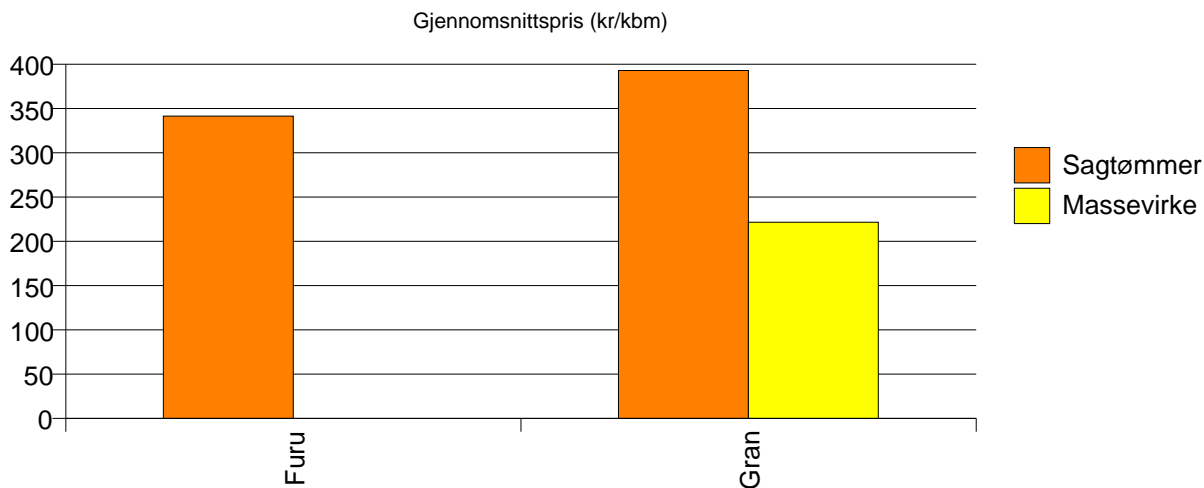
Volum (kbm)

	Sagtømmer	Massevirke	Vrak	Sum:
Furu	23			23
Gran	7 649	11 110	167	18 926
Sum:	7 672	11 110	167	18 949



Gjennomsnittspris (kr/kbm)

	Sagtømmer	Massevirke	Vrak	Snitt
Furu	341			341
Gran	393	222	0	289
Snitt	393	222	0	289

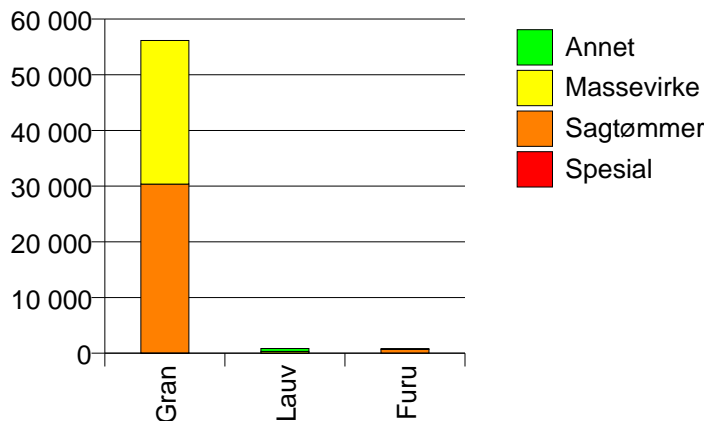


1736 SNÅSA

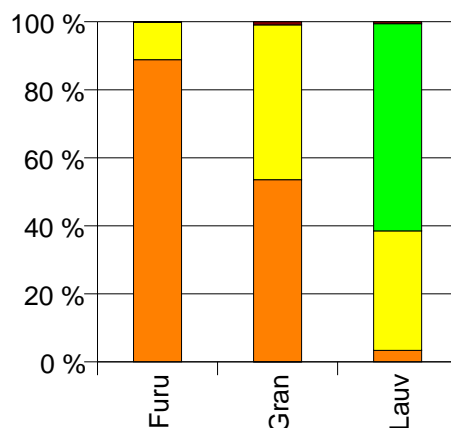
Volum (kbm)

	Spesial	Sagtømmer	Massevirke	Annet	Vrak	Sum:
Furu		710	88		1	799
Gran	26	30 337	25 785		525	56 673
Lauv		29	301	522	5	857
Sum:	26	31 076	26 174	522	531	58 329

Volum (kbm)



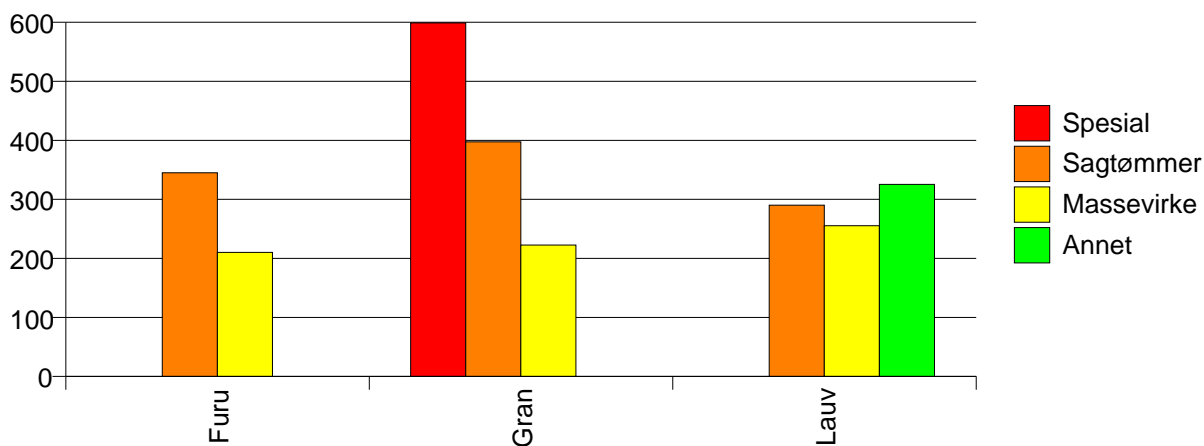
Volum (prosentfordelt)



Gjennomsnittspris (kr/kbm)

	Spesial	Sagtømmer	Massevirke	Annet	Vrak	Snitt
Furu		345	210		0	330
Gran	599	398	223		0	314
Lauv		290	255	325	0	298
Snitt	599	396	223	325	0	314

Gjennomsnittspris (kr/kbm)

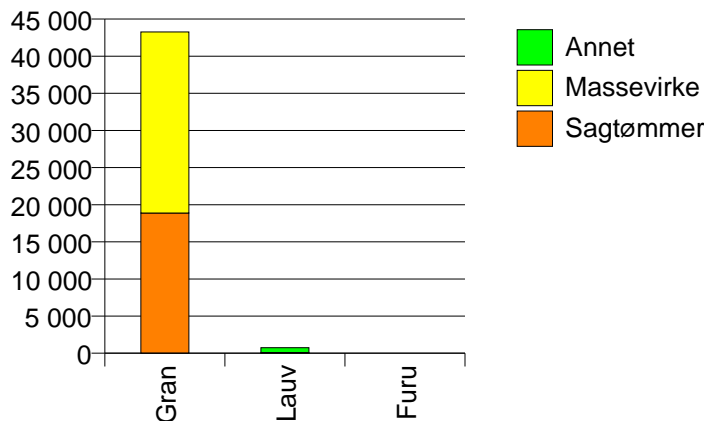


1738 LIERNE

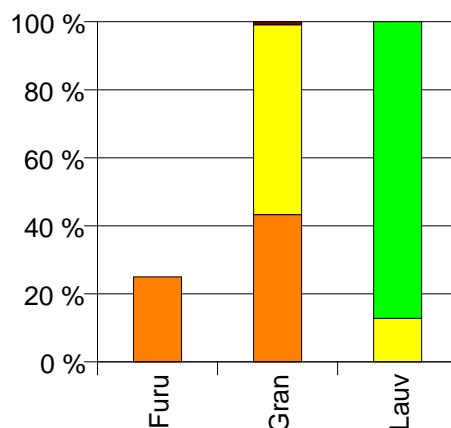
Volum (kbm)

	Sagtømmer	Massevirke	Annet	Vrak	Sum:
Furu	0				0
Gran	18 889	24 375		381	43 645
Lauv		95	648		743
Sum:	18 889	24 470	648	381	44 388

Volum (kbm)



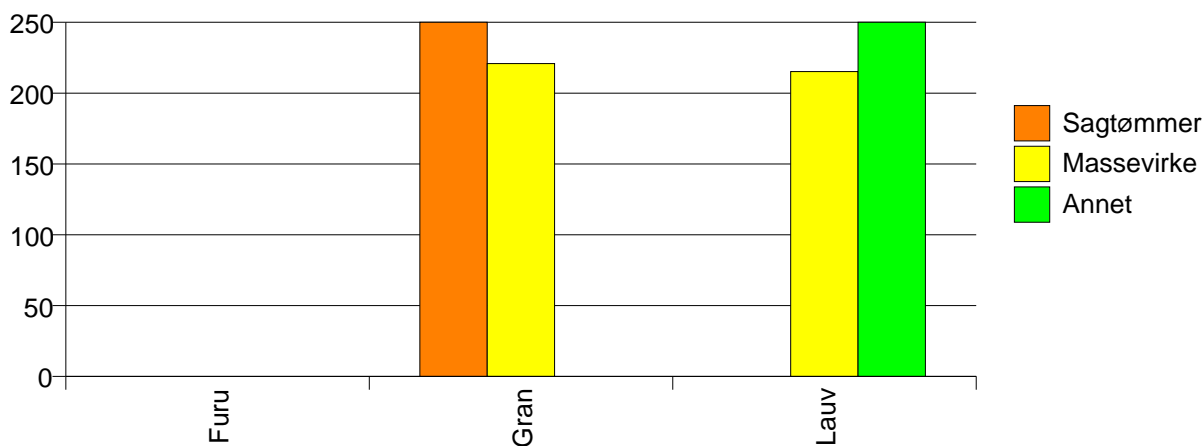
Volum (prosentfordelt)



Gjennomsnittspris (kr/kbm)

	Sagtømmer	Massevirke	Annet	Vrak	Snitt
Furu	#DIV/0				#DIV/0
Gran	415	221		0	303
Lauv		215	302		291
Snitt	415	221	302	0	303

Gjennomsnittspris (kr/kbm)

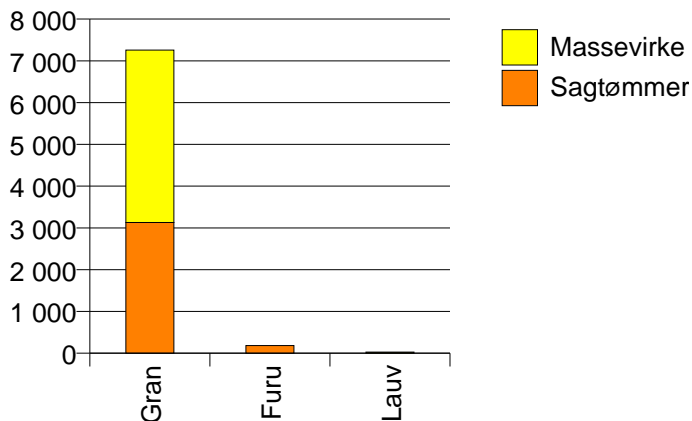


1740 NAMSSKOGAN

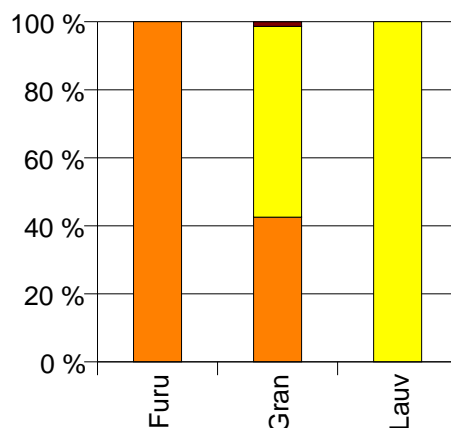
Volum (kbm)

	Sagtømmer	Massevirke	Vrak	Sum:
Furu	183			183
Gran	3 130	4 127	99	7 356
Lauv		28		28
Sum:	3 313	4 155	99	7 567

Volum (kbm)



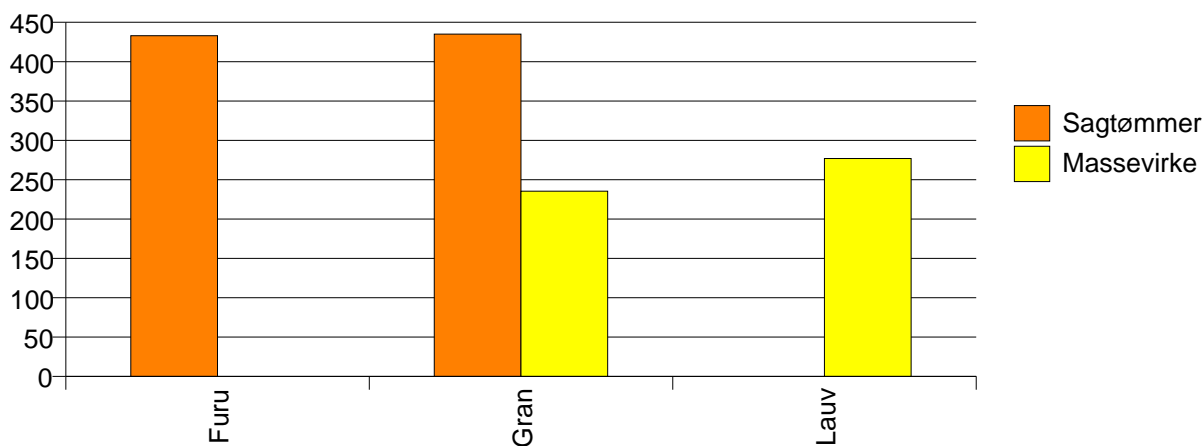
Volum (prosentfordelt)



Gjennomsnittspris (kr/kbm)

	Sagtømmer	Massevirke	Vrak	Snitt
Furu	433			433
Gran	435	235	0	317
Lauv		277		277
Snitt	435	236	0	320

Gjennomsnittspris (kr/kbm)

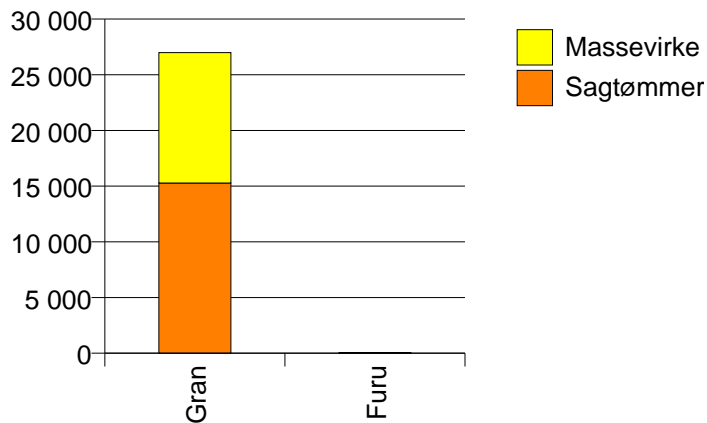


1742 GRONG

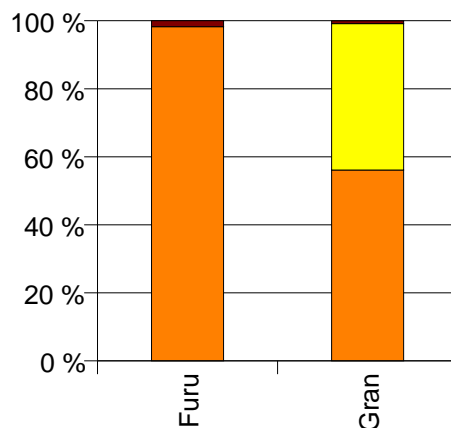
Volum (kbm)

	Sagtømmer	Massevirke	Vrak	Sum:
Furu	56		1	57
Gran	15 277	11 713	233	27 223
Sum:	15 333	11 713	234	27 280

Volum (kbm)



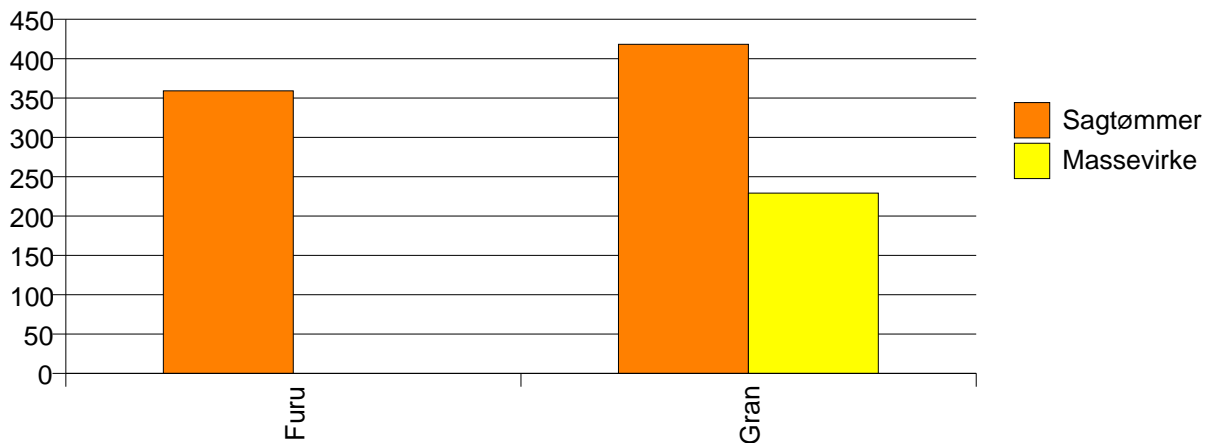
Volum (prosentfordelt)



Gjennomsnittspris (kr/kbm)

	Sagtømmer	Massevirke	Vrak	Snitt
Furu	359		0	353
Gran	418	229	0	333
Snitt	418	229	0	333

Gjennomsnittspris (kr/kbm)

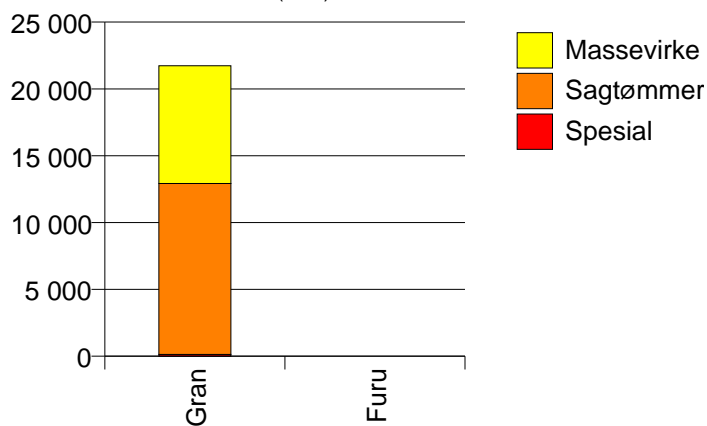


1743 HØYLANDET

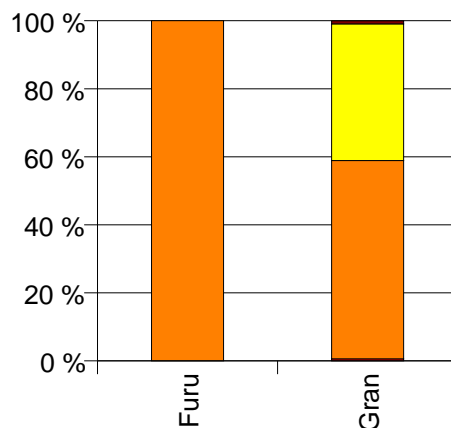
Volum (kbm)

	Spesial	Sagtømmer	Massevirke	Vrak	Sum:
Furu		2			2
Gran	135	12 788	8 810	201	21 934
Sum:	135	12 790	8 810	201	21 936

Volum (kbm)



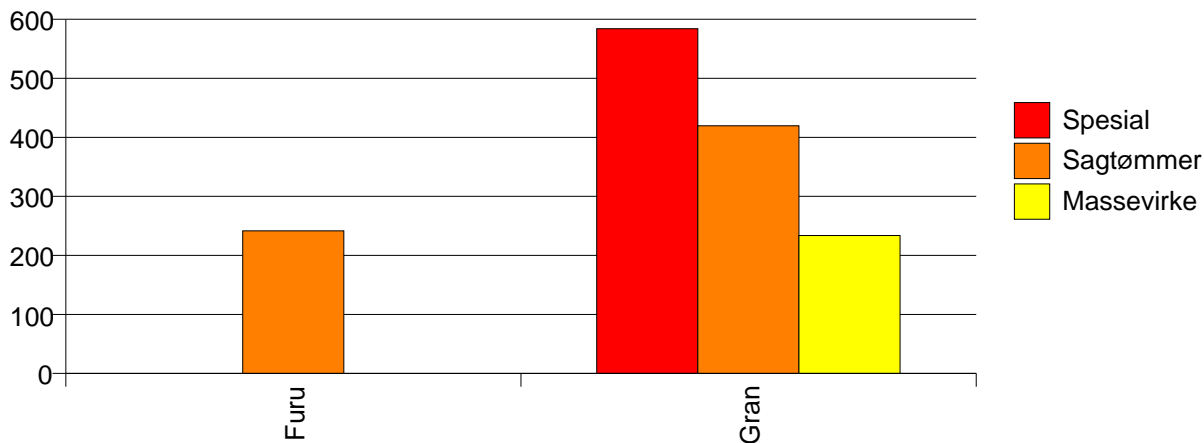
Volum (prosentfordelt)



Gjennomsnittspris (kr/kbm)

	Spesial	Sagtømmer	Massevirke	Vrak	Snitt
Furu		242			242
Gran	584	420	234	0	342
Snitt	584	420	234	0	342

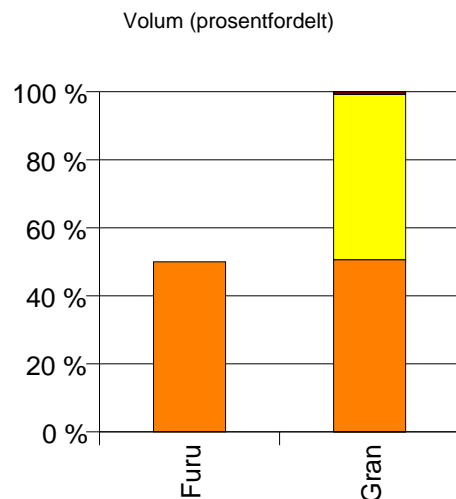
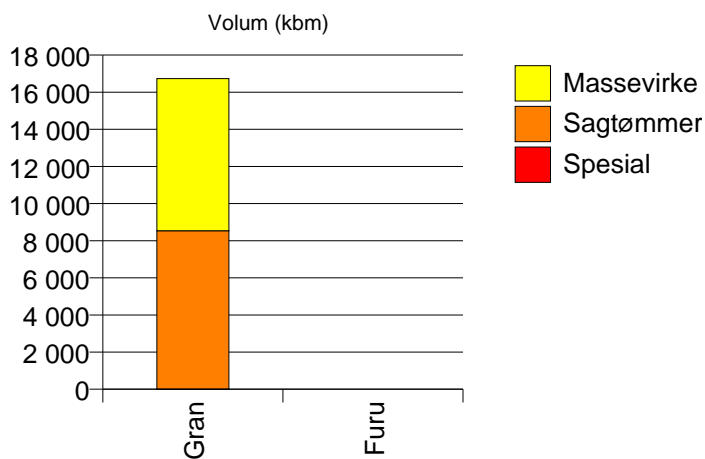
Gjennomsnittspris (kr/kbm)



1744 OVERHALLA

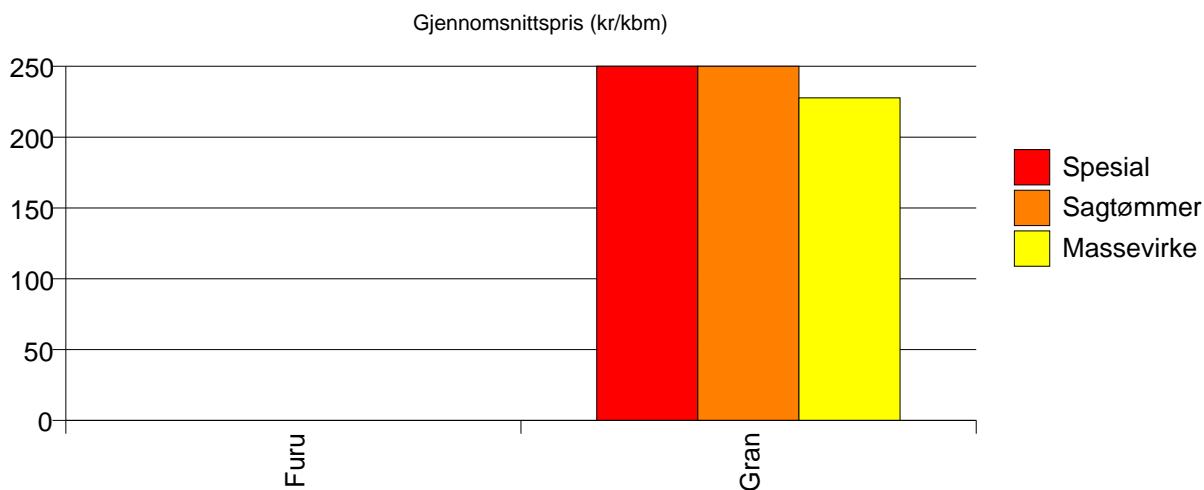
Volum (kbm)

	Spesial	Sagtømmer	Massevirke	Vrak	Sum:
Furu		0			0
Gran	13	8 526	8 196	126	16 861
Sum:	13	8 526	8 196	126	16 861



Gjennomsnittspris (kr/kbm)

	Spesial	Sagtømmer	Massevirke	Vrak	Snitt
Furu		#DIV/0			#DIV/0
Gran	595	416	228	0	321
Snitt	595	416	228	0	321

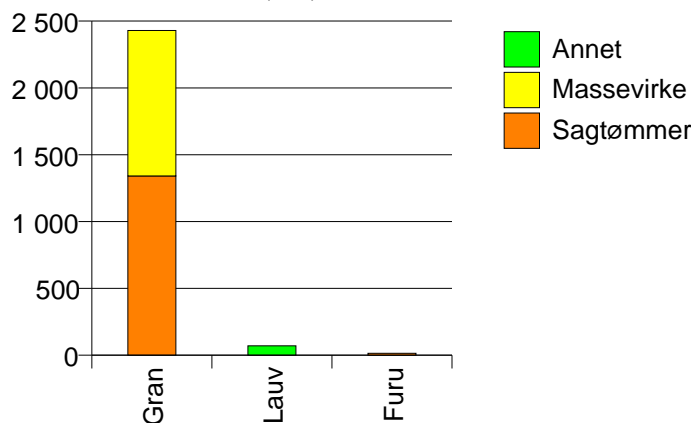


1751 NÆRØY

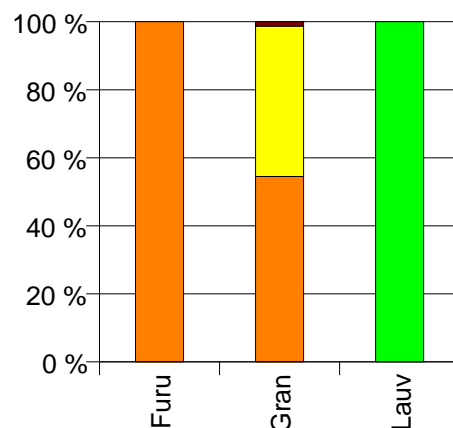
Volum (kbm)

	Sagtømmer	Massevirke	Annet	Vrak	Sum:
Furu	14				14
Gran	1 341	1 089		31	2 461
Lauv			70		70
Sum:	1 355	1 089	70	31	2 545

Volum (kbm)



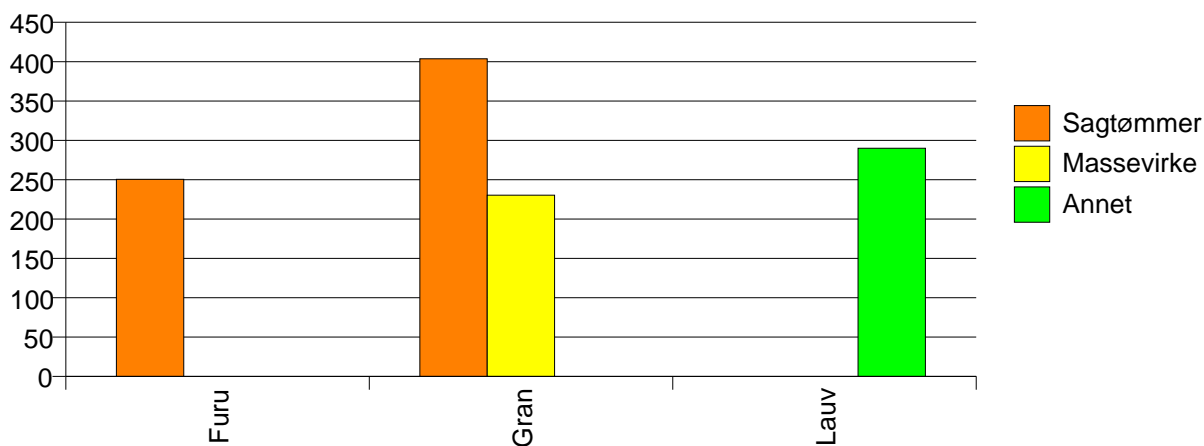
Volum (prosentfordelt)



Gjennomsnittspris (kr/kbm)

	Sagtømmer	Massevirke	Annet	Vrak	Snitt
Furu	250				250
Gran	404	230		0	322
Lauv			290		290
Snitt	402	230	290	0	321

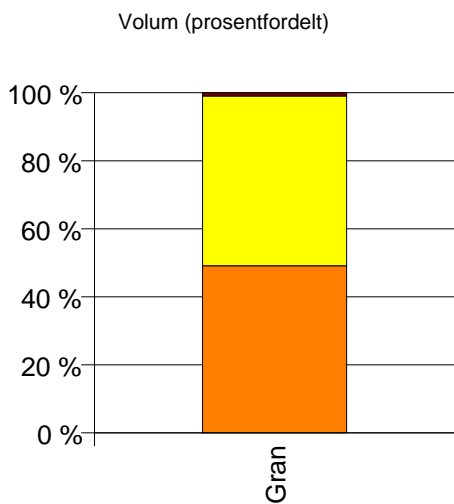
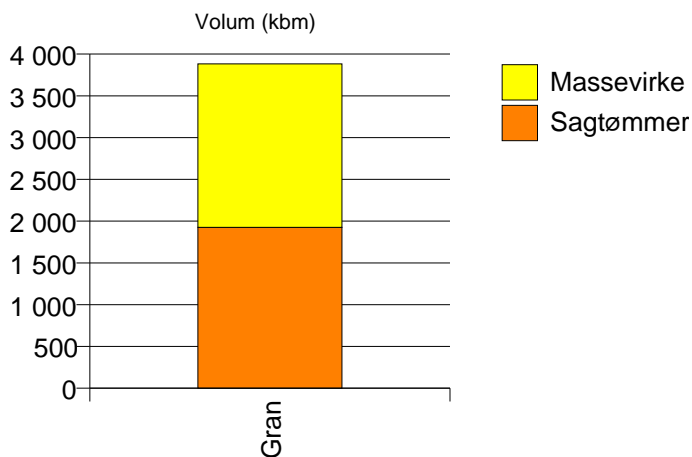
Gjennomsnittspris (kr/kbm)



1739 RØYRVIK

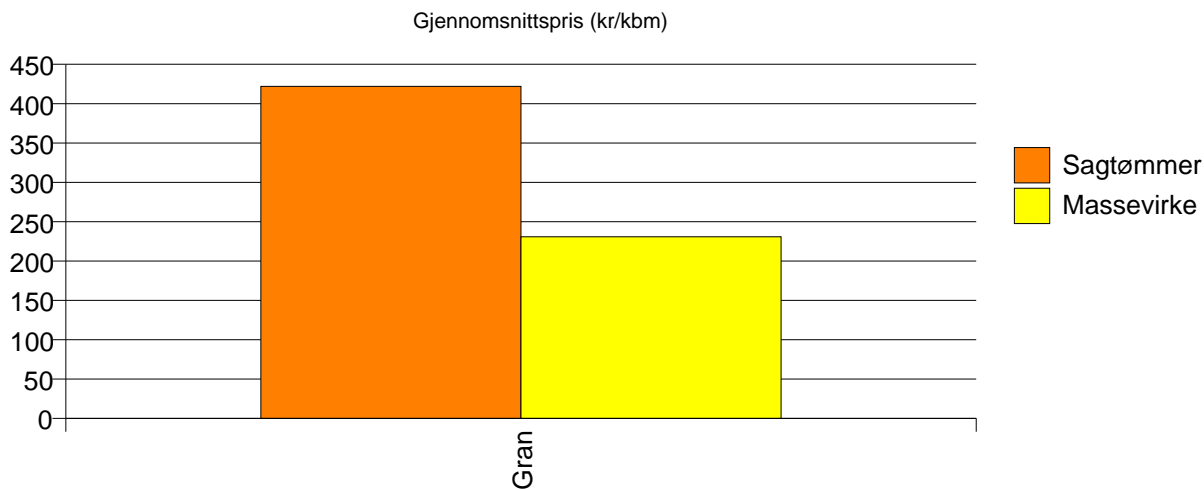
Volum (kbm)

	Sagtømmer	Massevirke	Vrak	Sum:
Gran	1 926	1 956	38	3 920
Sum:	1 926	1 956	38	3 920



Gjennomsnittspris (kr/kbm)

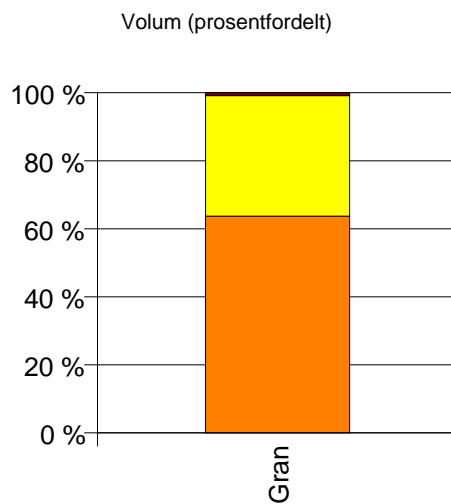
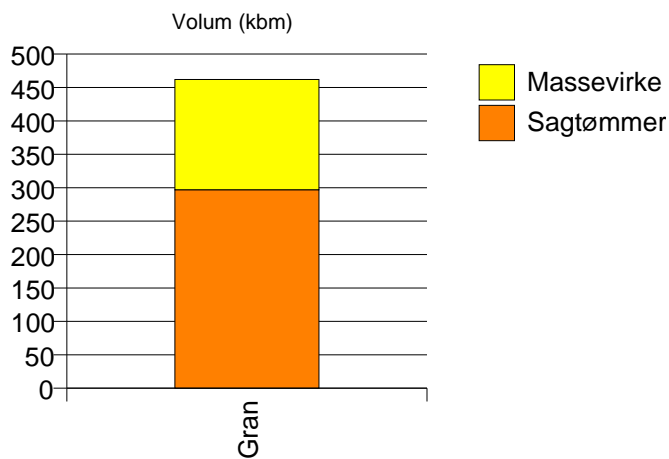
Gran	422	231	0	323
Snitt	422	231	0	323



1748 FOSNES

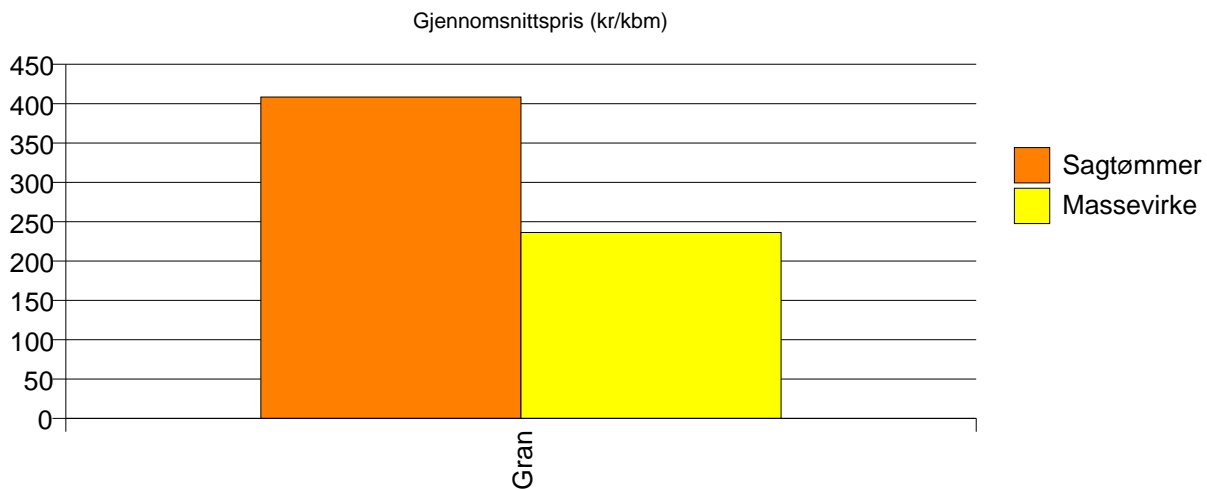
Volum (kbm)

	Sagtømmer	Massevirke	Vrak	Sum:
Gran	297	165	4	466
Sum:	297	165	4	466



Gjennomsnittspris (kr/kbm)

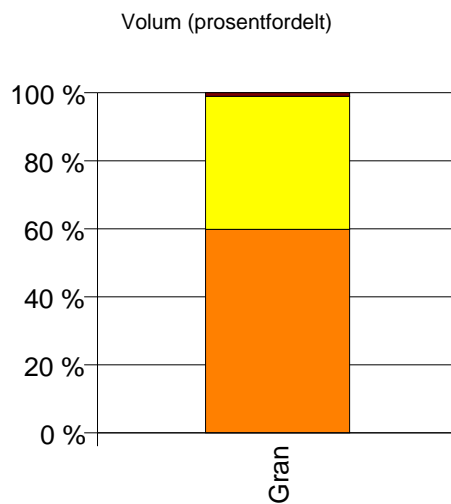
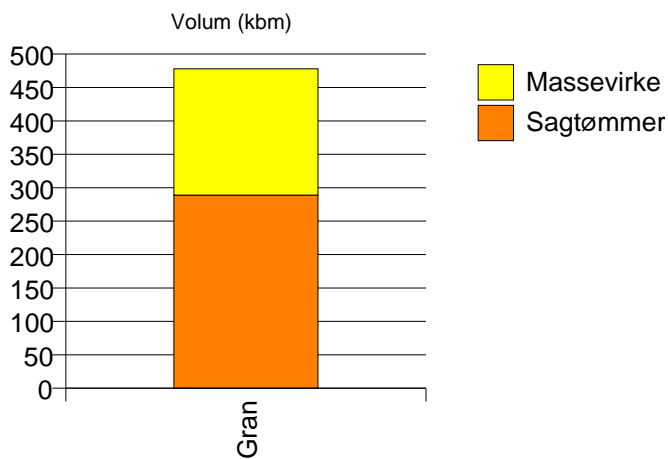
Gran	408	236	0	344
Snitt	408	236	0	344



1749 FLATANGER

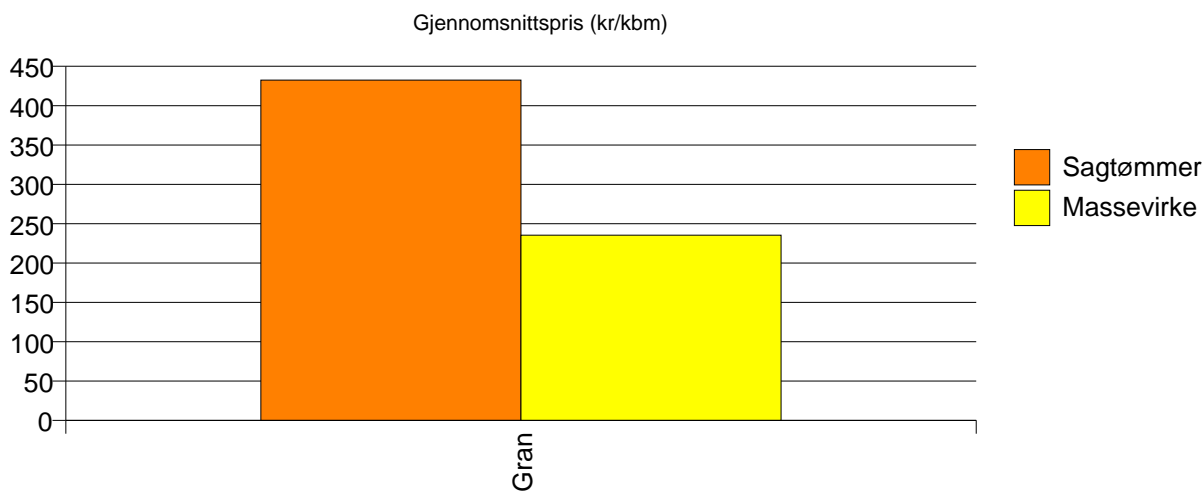
Volum (kbm)

	Sagtømmer	Massevirke	Vrak	Sum:
Gran	289	189	5	483
Sum:	289	189	5	483



Gjennomsnittspris (kr/kbm)

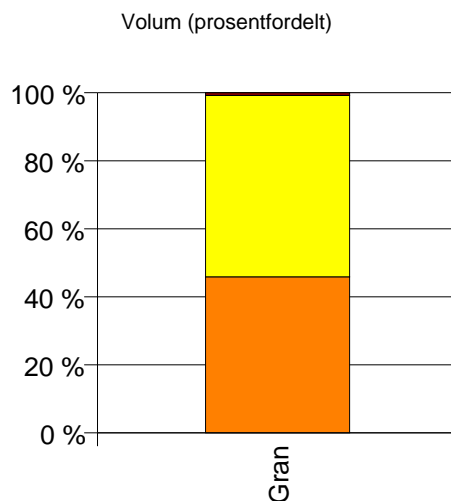
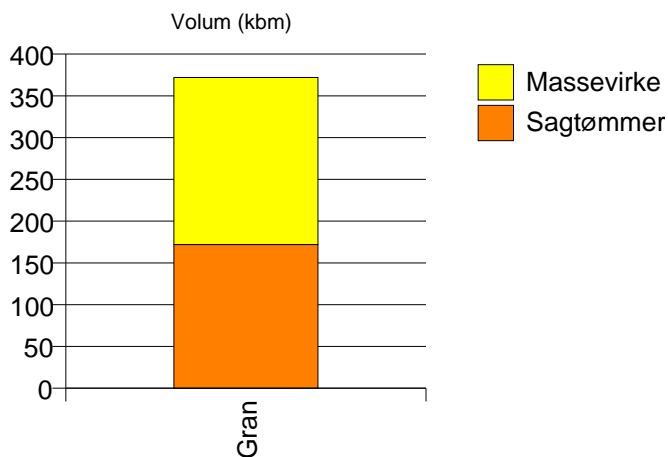
Gran	433	235	0	351
Snitt	433	235	0	351



1750 VIKNA

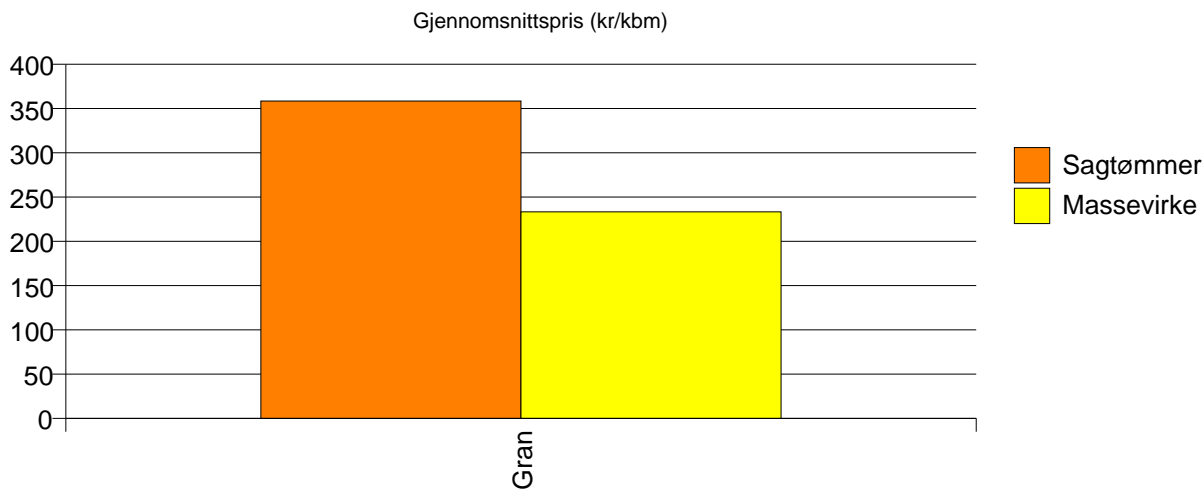
Volum (kbm)

	Sagtømmer	Massevirke	Vrak	Sum:
Gran	172	200	3	375
Sum:	172	200	3	375



Gjennomsnittspris (kr/kbm)

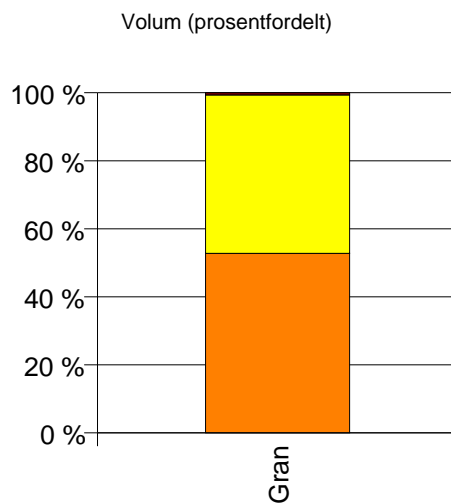
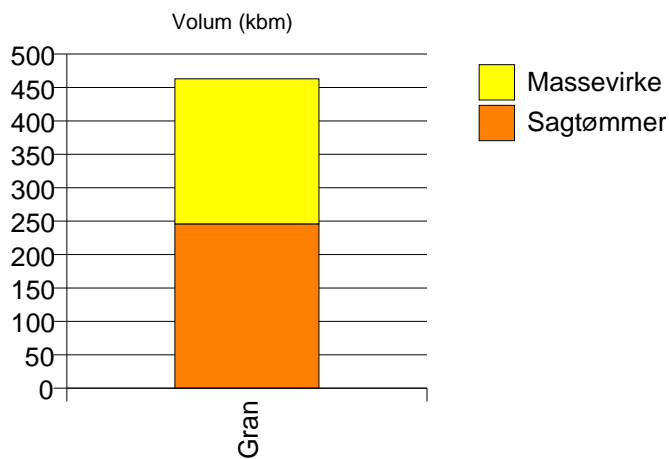
Gran	358	233	0	289
Snitt	358	233	0	289



1755 LEKA

Volum (kbm)

	Sagtømmer	Massevirke	Vrak	Sum:
Gran	246	217	3	466
Sum:	246	217	3	466



Gjennomsnittspris (kr/kbm)

Gran	391	236	0	316
Snitt	391	236	0	316

