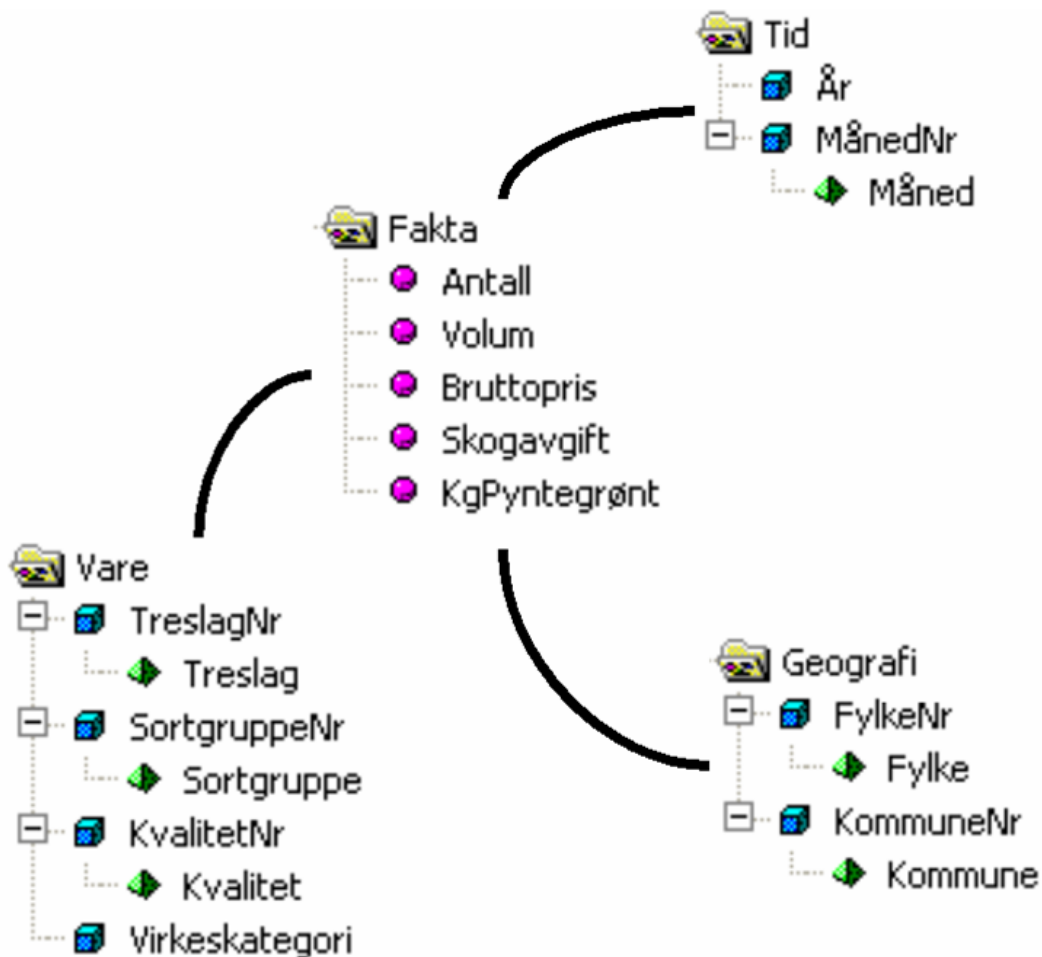


# Virkestatistikk fra SKOG-DATA AS

m/kommuner



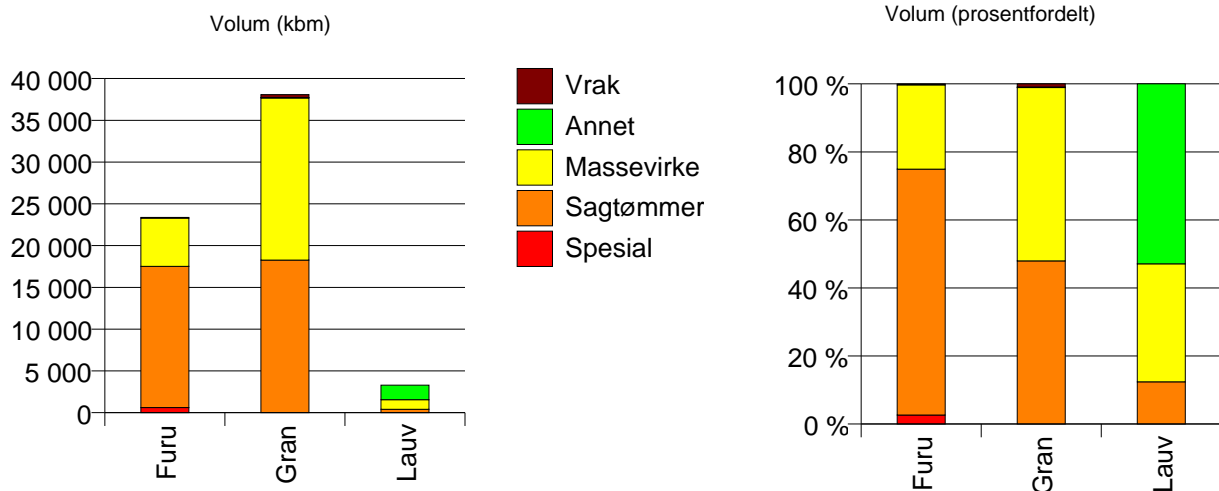
Dataene i rapporten er hentet fra databasen som inneholder virkesdata med tilhørende innbetalinger av skogavgift. Rapporten er laget med Business Objects, som er sluttbrukerverktøyet i Skog-Data sine nye datavarehus-løsninger. Business Objects er ett meget sterkt rapportverktøy som kan presentere store mengder data effektivt.

Rapportene kan lastes ned fra [www.skogdata.no/statistikk](http://www.skogdata.no/statistikk)

For mer informasjon, kontakt: [alexanderh@skogdata.no](mailto:alexanderh@skogdata.no)

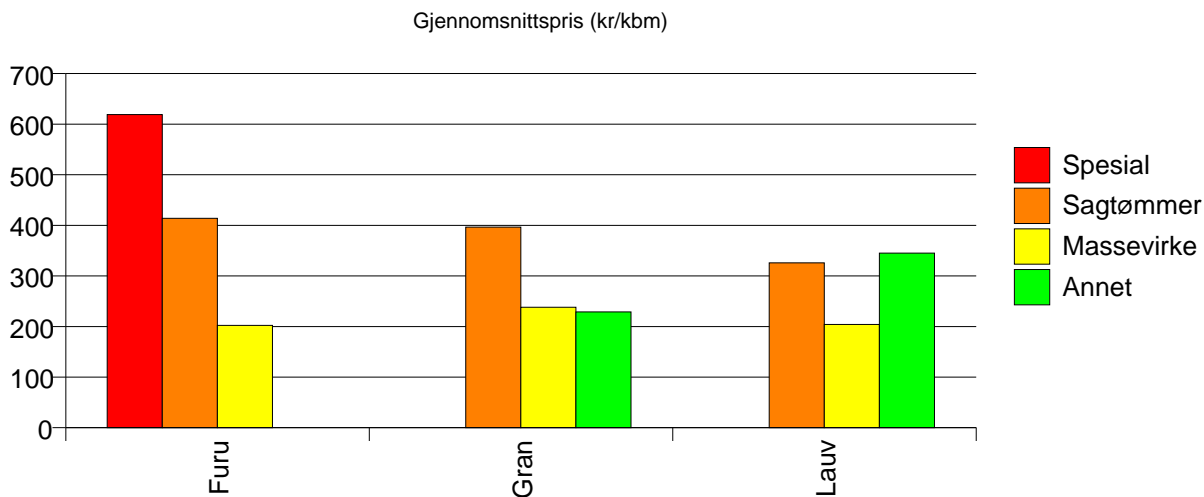
## Volum

	Spesial	Sagtømmer	Massevirke	Annet	Vrak	Sum:
Furu	614	16 898	5 786		72	23 370
Gran		18 270	19 405	52	352	38 079
Lauv		408	1 142	1 740		3 290
Sum:	614	35 576	26 333	1 792	424	64 739



## Gjennomsnittspris (kr/kbm)

	Spesial	Sagtømmer	Massevirke	Annet	Vrak	Snitt:
Furu	619	414	202		0	366
Gran		397	238	229	0	312
Lauv		326	204	345		294
Snitt:	619	404	229	342	0	330

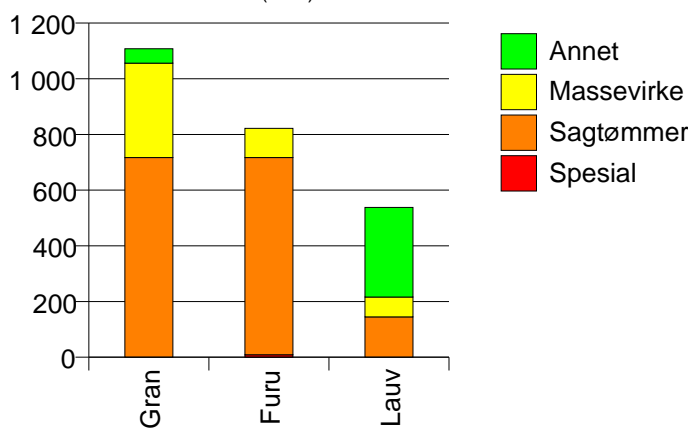


## 1539 RAUMA

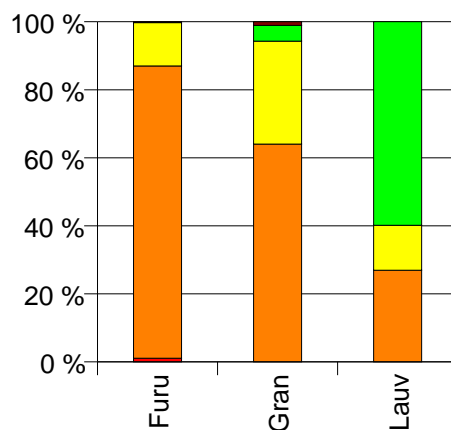
### Volum (kbm)

	Spesial	Sagtømmer	Massevirke	Annet	Vrak	Sum:
Furu	9	708	105		2	824
Gran		717	339	52	12	1 120
Lauv		145	71	322		538
Sum:	9	1 570	515	374	14	2 482

Volum (kbm)



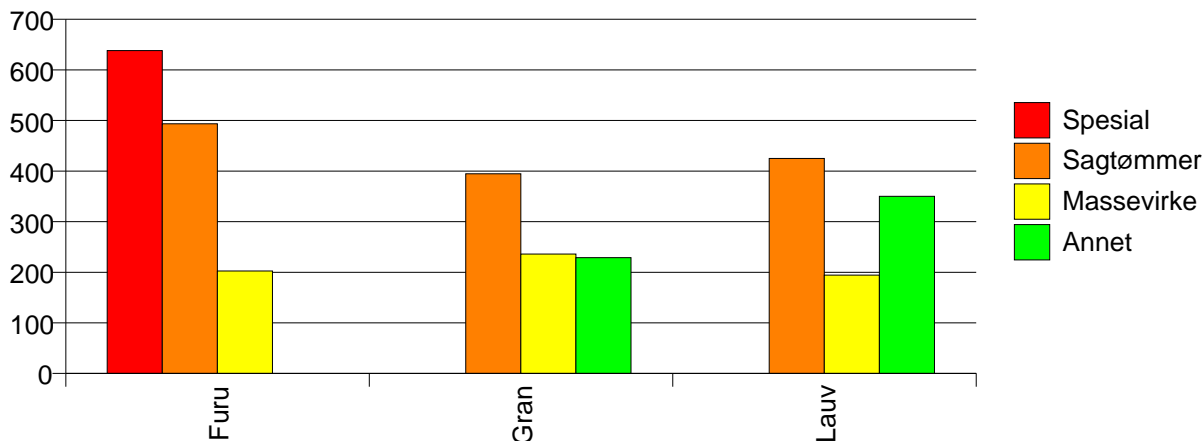
Volum (prosentfordelt)



### Gjennomsnittspris (kr/kbm)

	Spesial	Sagtømmer	Massevirke	Annet	Vrak	Snitt
Furu	638	493	202		0	457
Gran		395	236	229	0	335
Lauv		425	194	350		350
Snitt	638	442	223	333	0	379

Gjennomsnittspris (kr/kbm)

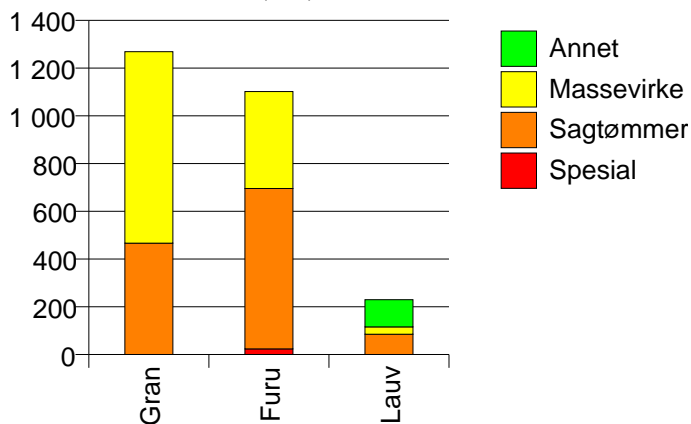


# 1543 NESSET

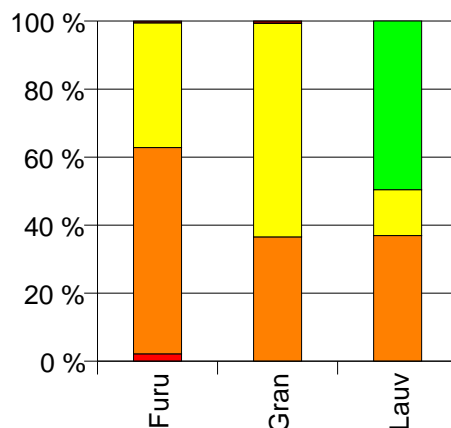
## Volum (kbm)

	Spesial	Sagtømmer	Massevirke	Annet	Vrak	Sum:
Furu	24	672	406		6	1 108
Gran		467	802		9	1 278
Lauv		85	31	114		230
Sum:	24	1 224	1 239	114	15	2 616

Volum (kbm)



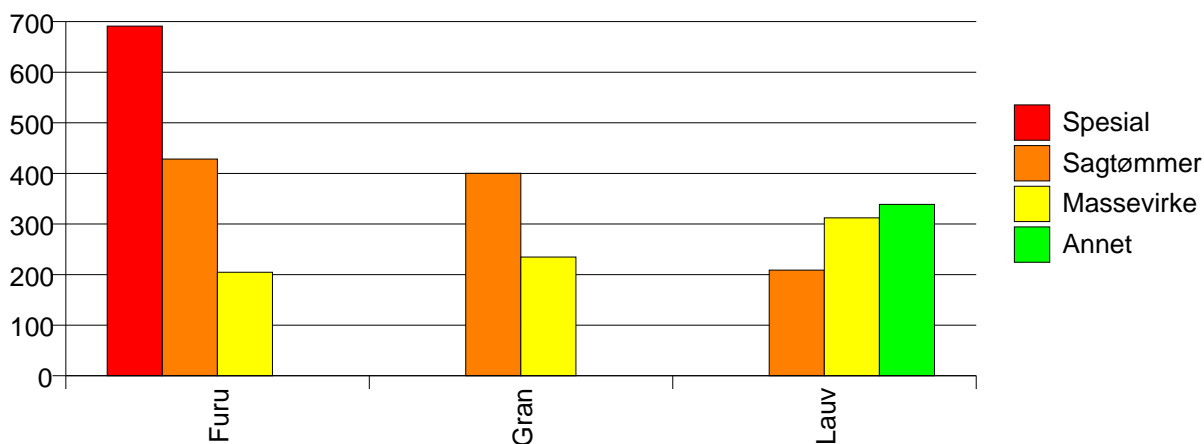
Volum (prosentfordelt)



## Gjennomsnittspris (kr/kbm)

	Spesial	Sagtømmer	Massevirke	Annet	Vrak	Snitt
Furu	691	428	205		0	350
Gran		400	235		0	293
Lauv		209	312	339		287
Snitt	691	402	227	339	0	317

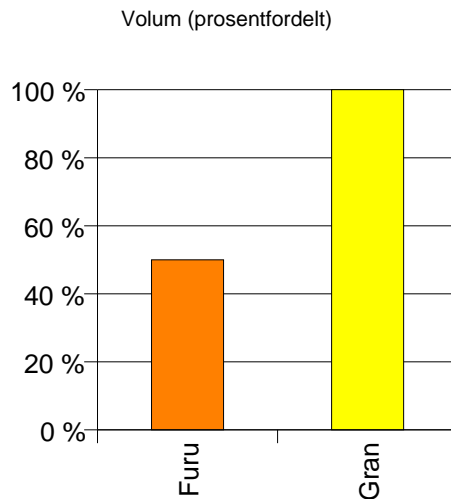
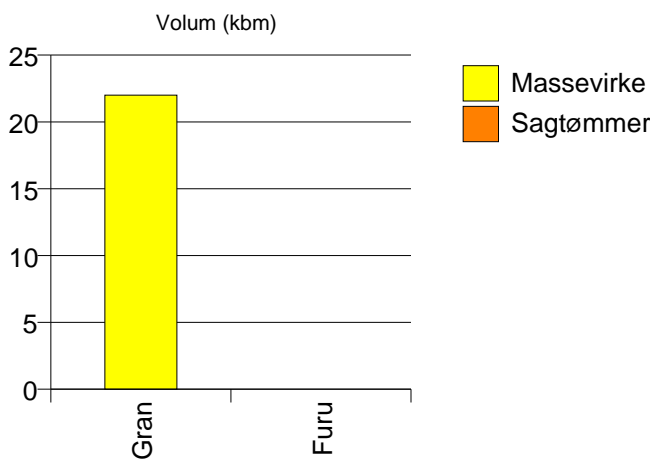
Gjennomsnittspris (kr/kbm)



## 1551 EIDE

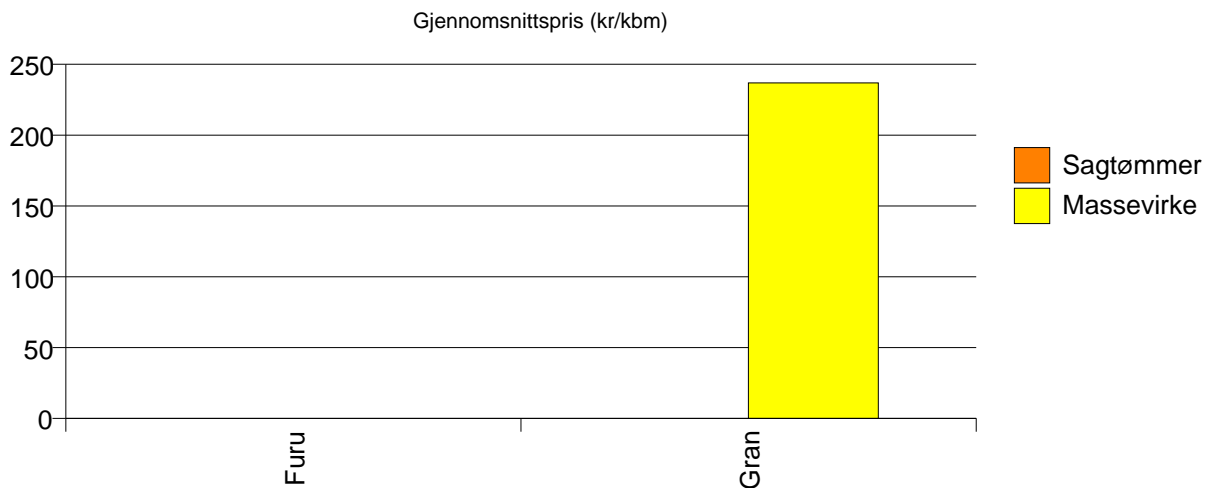
Volum (kbm)

	Sagtømmer	Massevirke	Sum:
Furu	0		0
Gran		22	22
Sum:	0	22	22



Gjennomsnittspris (kr/kbm)

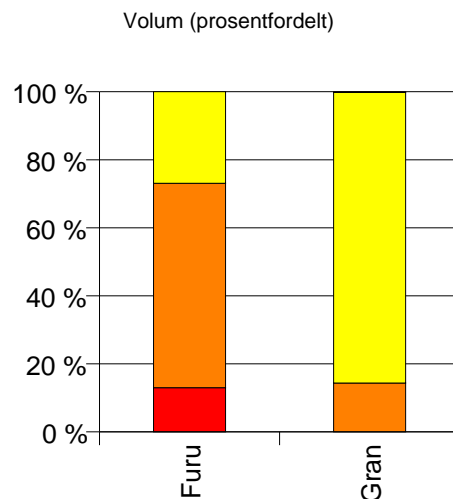
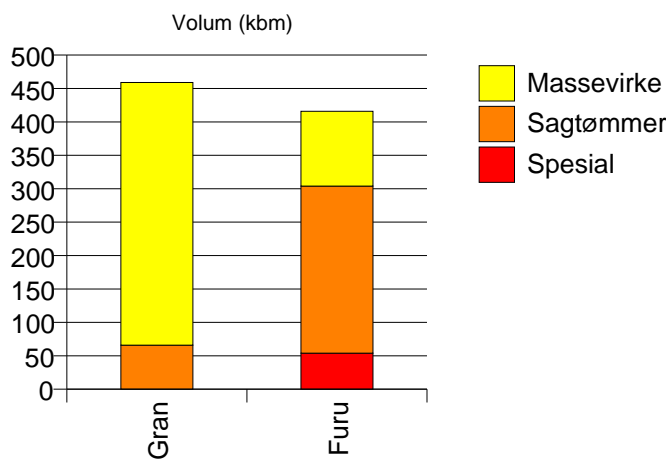
	Sagtømmer	Massevirke	Snitt
Furu	#DIV/0		#DIV/0
Gran		237	237
Snitt	#DIV/0	237	237



# 1557 GJEMNES

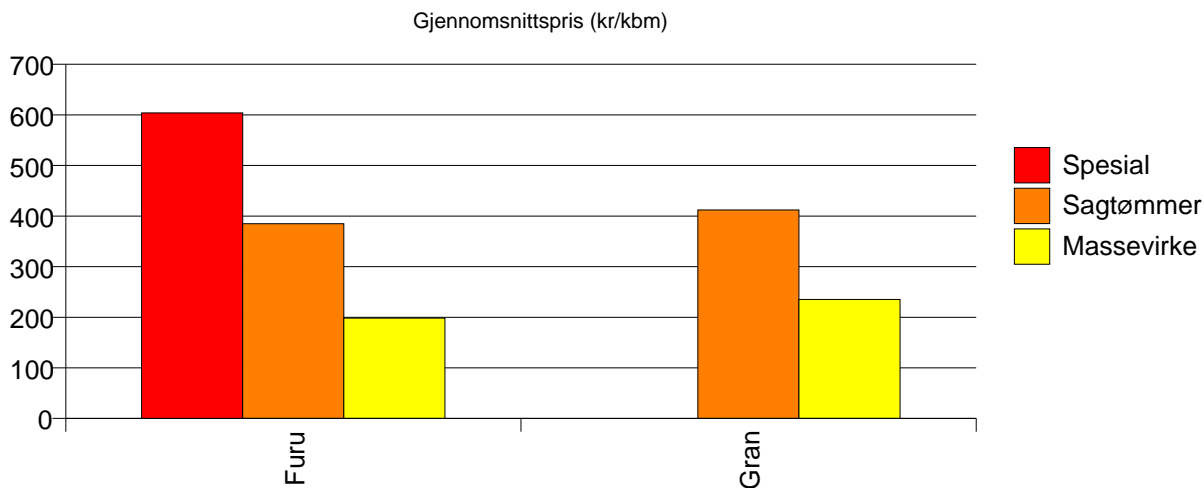
Volum (kbm)

	Spesial	Sagtømmer	Massevirke	Vrak	Sum:
Furu	54	250	112		416
Gran		66	393	1	460
Sum:	54	316	505	1	876



Gjennomsnittspris (kr/kbm)

	Spesial	Sagtømmer	Massevirke	Vrak	Snitt
Furu	604	385	198		363
Gran		412	235	0	260
Snitt	604	391	227	0	309

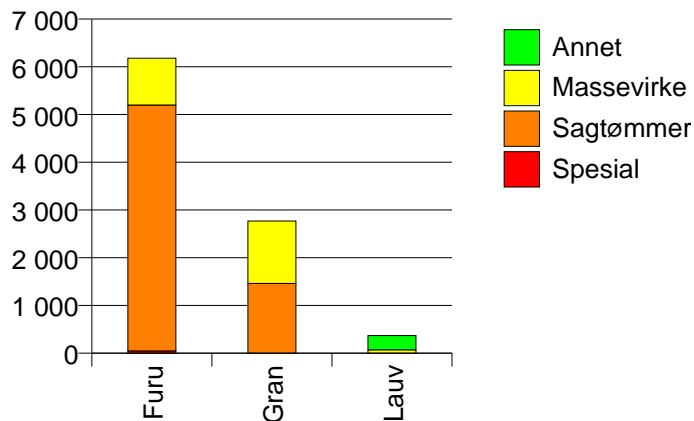


# 1560 TINGVOLL

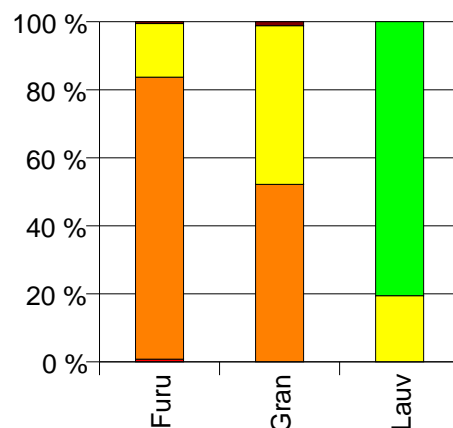
## Volum (kbm)

	Spesial	Sagtømmer	Massevirke	Annet	Vrak	Sum:
Furu	50	5 151	979		34	6 214
Gran		1 462	1 307		32	2 801
Lauv			72	298		370
Sum:	50	6 613	2 358	298	66	9 385

Volum (kbm)



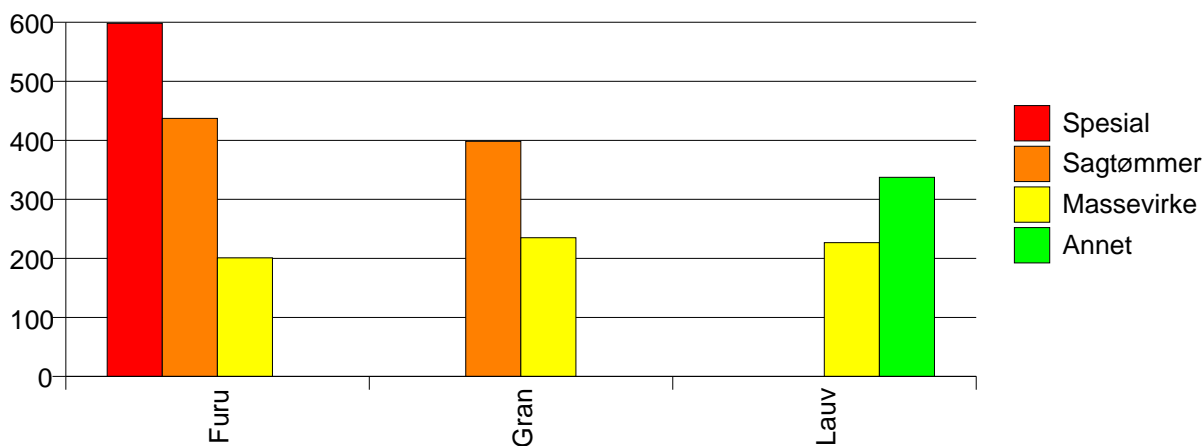
Volum (prosentfordelt)



## Gjennomsnittspris (kr/kbm)

	Spesial	Sagtømmer	Massevirke	Annet	Vrak	Snitt
Furu	598	437	201		0	399
Gran		398	235		0	318
Lauv			227	337		316
Snitt	598	429	221	337	0	371

Gjennomsnittspris (kr/kbm)

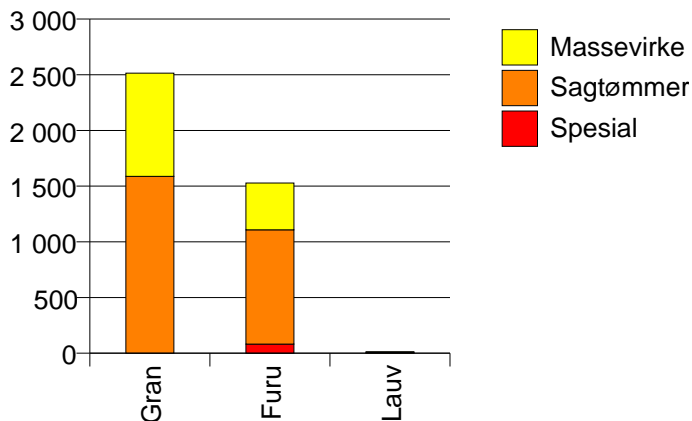


# 1563 SUNNDAL

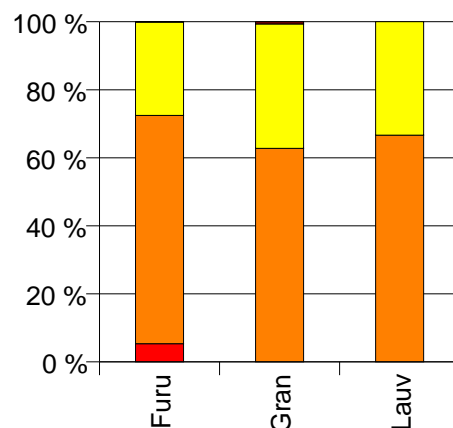
Volum (kbm)

	Spesial	Sagtømmer	Massevirke	Vrak	Sum:
Furu	82	1 026	420	1	1 529
Gran		1 588	926	16	2 530
Lauv		8	4		12
Sum:	82	2 622	1 350	17	4 071

Volum (kbm)



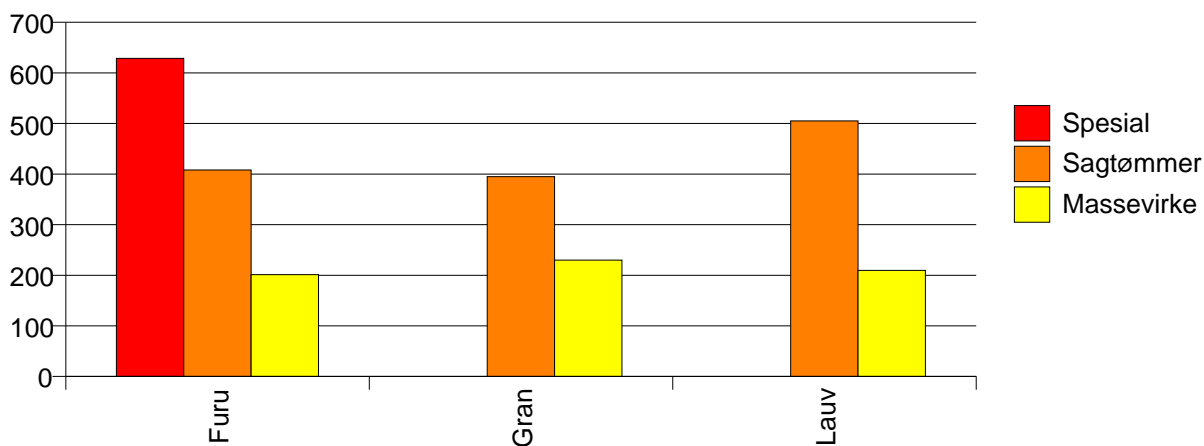
Volum (prosentfordelt)



Gjennomsnittspris (kr/kbm)

	Spesial	Sagtømmer	Massevirke	Vrak	Snitt
Furu	629	408	201	0	363
Gran		395	230	0	332
Lauv		505	210		407
Snitt	629	400	221	0	344

Gjennomsnittspris (kr/kbm)



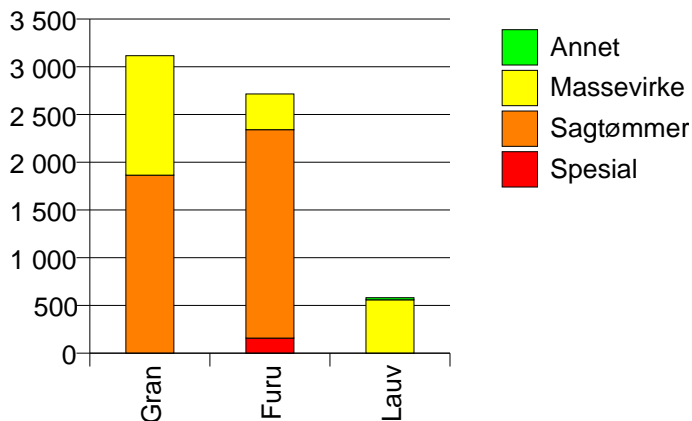


# 1566 SURNADAL

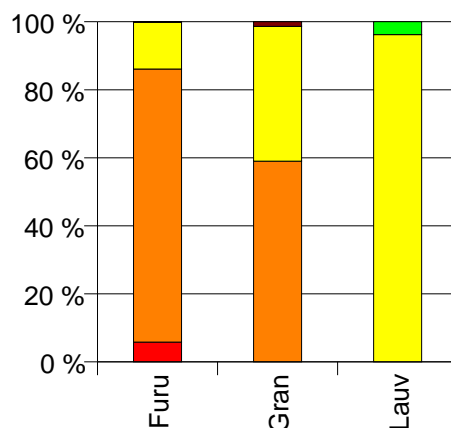
Volum (kbm)

	Spesial	Sagtømmer	Massevirke	Annet	Vrak	Sum:
Furu	158	2 184	374		4	2 720
Gran		1 865	1 252		43	3 160
Lauv			560	22		582
Sum:	158	4 049	2 186	22	47	6 462

Volum (kbm)



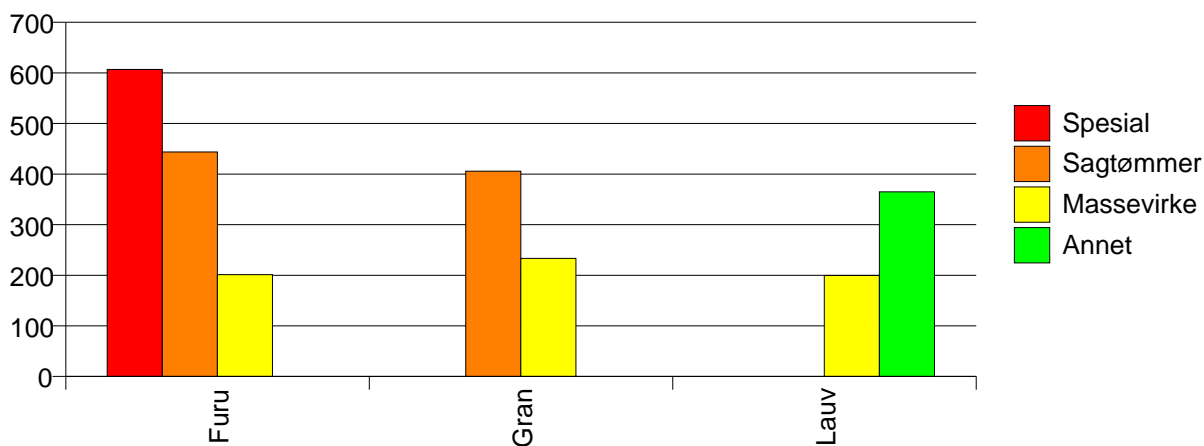
Volum (prosentfordelt)



Gjennomsnittspris (kr/kbm)

	Spesial	Sagtømmer	Massevirke	Annet	Vrak	Snitt
Furu	607	444	201		0	419
Gran		406	233		0	332
Lauv			200	365		206
Snitt	607	426	219	365	0	357

Gjennomsnittspris (kr/kbm)

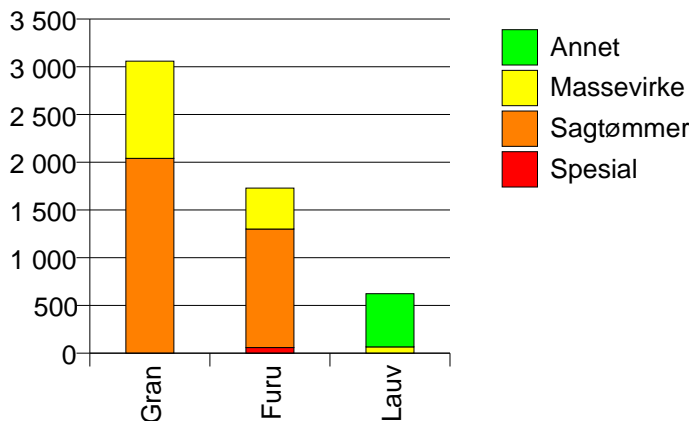


# 1567 RINDAL

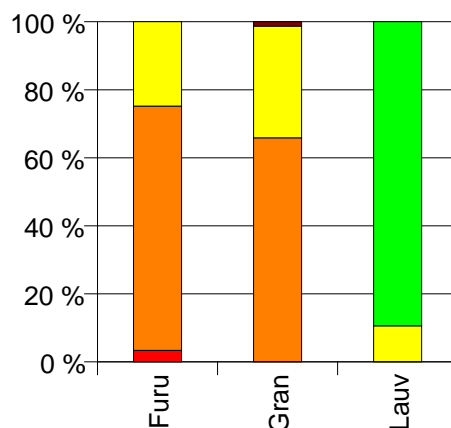
## Volum (kbm)

	Spesial	Sagtømmer	Massevirke	Annet	Vrak	Sum:
Furu	59	1 242	429			1 730
Gran		2 041	1 019		39	3 099
Lauv			66	557		623
Sum:	59	3 283	1 514	557	39	5 452

Volum (kbm)



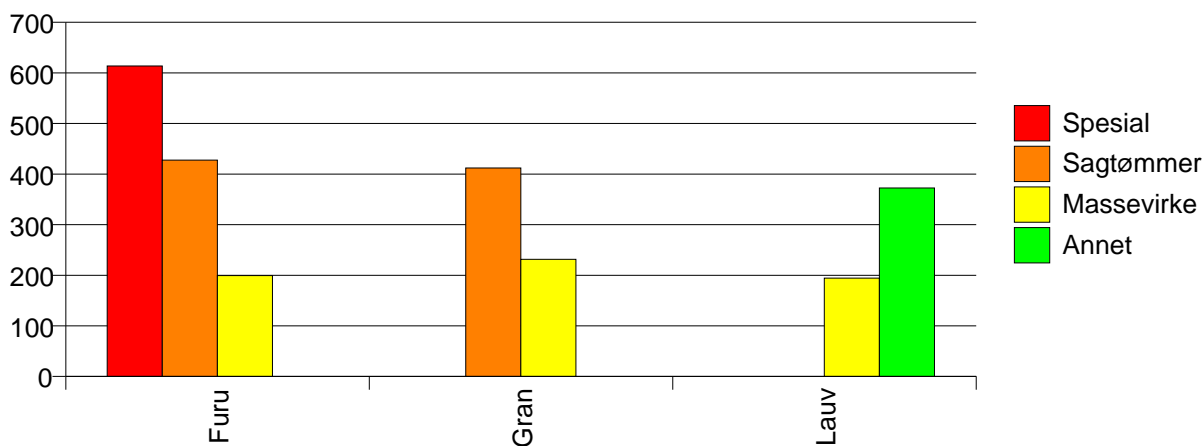
Volum (prosentfordelt)



## Gjennomsnittspris (kr/kbm)

	Spesial	Sagtømmer	Massevirke	Annet	Vrak	Snitt
Furu	614	428	199			377
Gran		412	231		0	348
Lauv			194	373		354
Snitt	614	418	221	373	0	358

Gjennomsnittspris (kr/kbm)

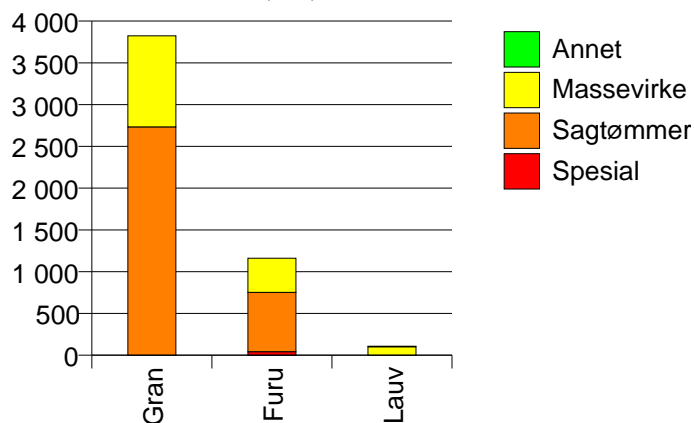


# 1571 HALSA

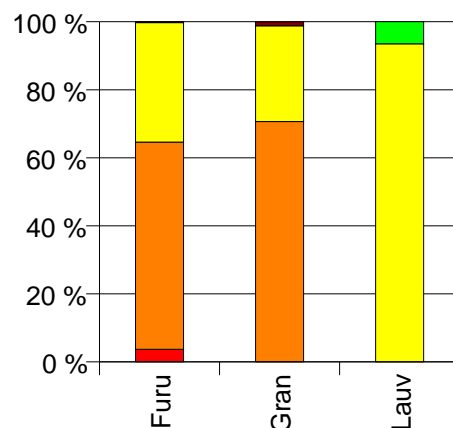
## Volum (kbm)

	Spesial	Sagtømmer	Massevirke	Annet	Vrak	Sum:
Furu	43	710	409		3	1 165
Gran		2 734	1 089		46	3 869
Lauv			101	7		108
Sum:	43	3 444	1 599	7	49	5 142

Volum (kbm)



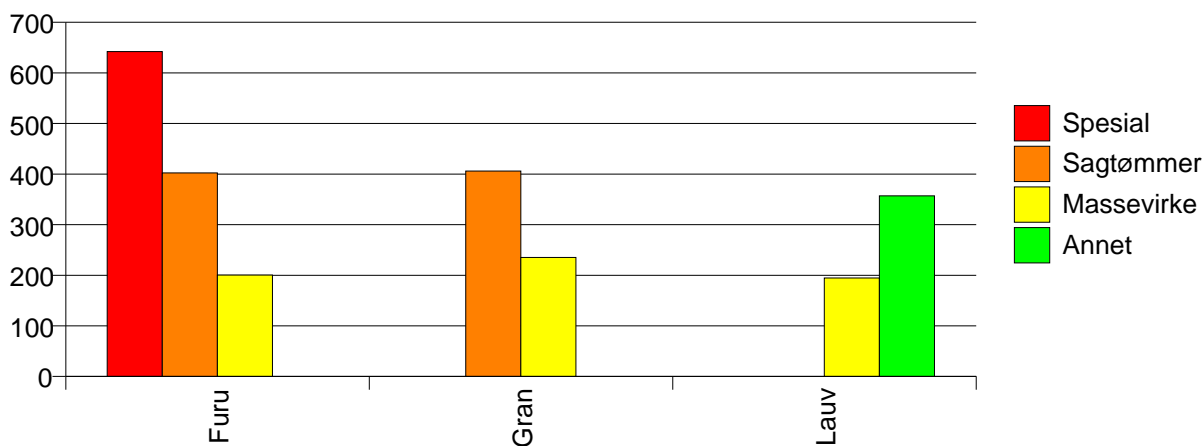
Volum (prosentfordelt)



## Gjennomsnittspris (kr/kbm)

	Spesial	Sagtømmer	Massevirke	Annet	Vrak	Snitt
Furu	642	402	201		0	339
Gran		406	235		0	353
Lauv			195	357		205
Snitt	642	405	224	357	0	347

Gjennomsnittspris (kr/kbm)

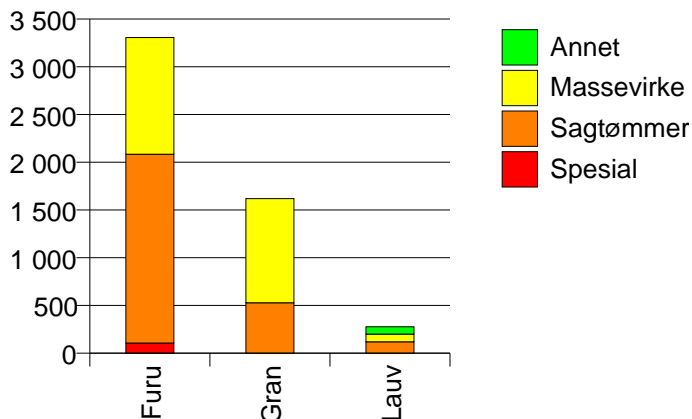


# 1502 MOLDE

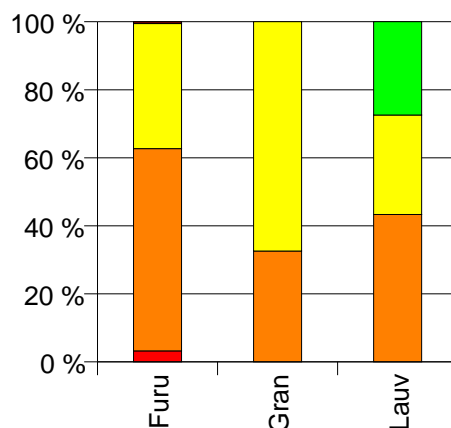
## Volum (kbm)

	Spesial	Sagtømmer	Massevirke	Annet	Vrak	Sum:
Furu	107	1 977	1 222		17	3 323
Gran		528	1 091			1 619
Lauv		120	81	76		277
Sum:	107	2 625	2 394	76	17	5 219

Volum (kbm)



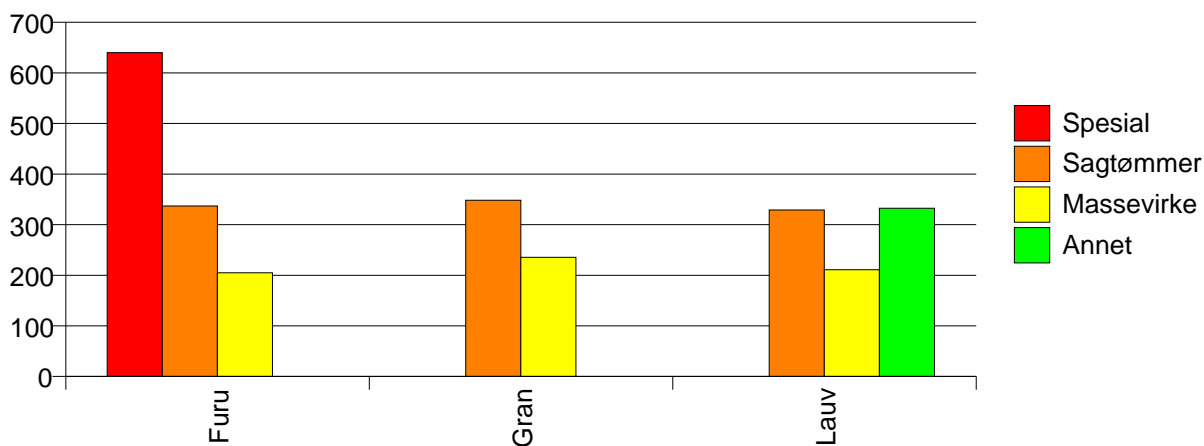
Volum (prosentfordelt)



## Gjennomsnittspris (kr/kbm)

	Spesial	Sagtømmer	Massevirke	Annet	Vrak	Snitt
Furu	640	337	205		0	296
Gran		348	236			272
Lauv		329	211	332		296
Snitt	640	339	219	332	0	289

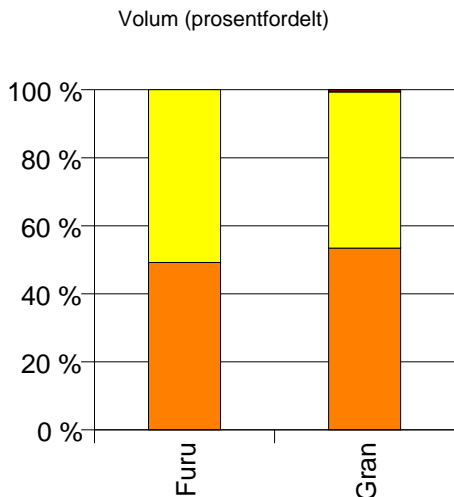
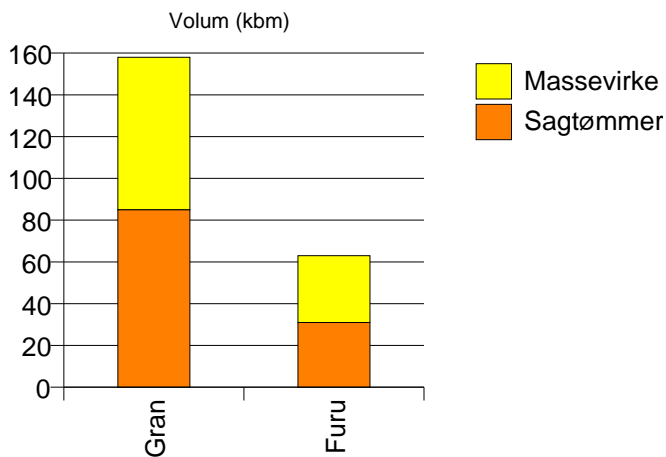
Gjennomsnittspris (kr/kbm)



## 1511 VANYLVEN

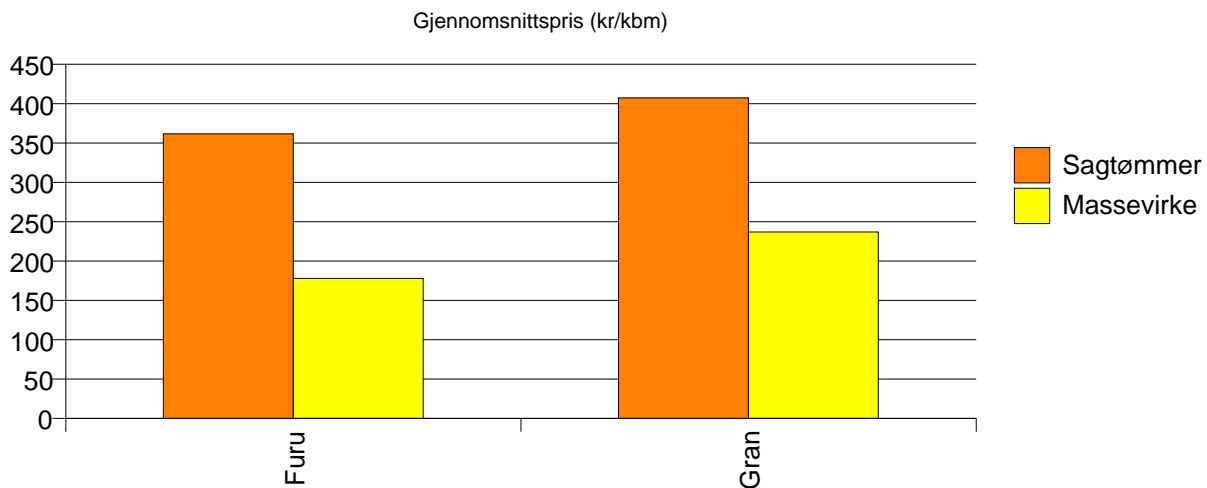
Volum (kbm)

	Sagtømmer	Massevirke	Vrak	Sum:
Furu	31	32		63
Gran	85	73	1	159
Sum:	116	105	1	222



Gjennomsnittspris (kr/kbm)

	Sagtømmer	Massevirke	Vrak	Snitt
Furu	362	178		268
Gran	407	237	0	327
Snitt	395	219	0	310

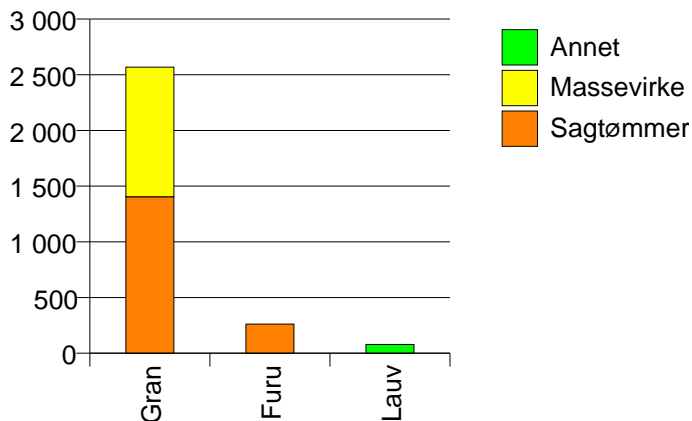


# 1519 VOLDA

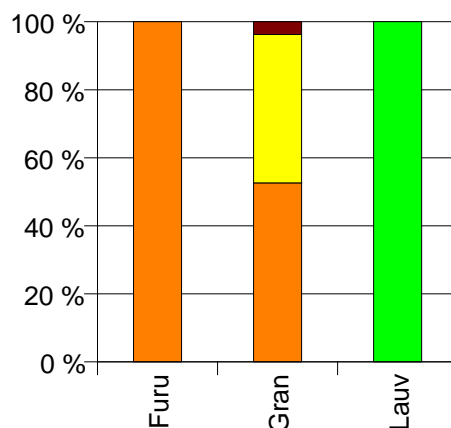
## Volum (kbm)

	Sagtømmer	Massevirke	Annet	Vrak	Sum:
Furu	262				262
Gran	1 405	1 164		100	2 669
Lauv			79		79
Sum:	1 667	1 164	79	100	3 010

Volum (kbm)



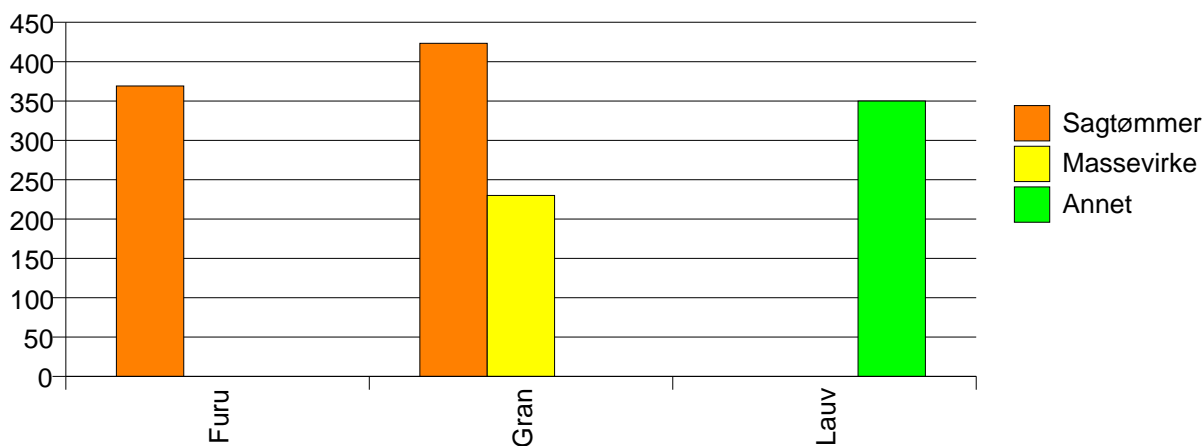
Volum (prosentfordelt)



## Gjennomsnittspris (kr/kbm)

	Sagtømmer	Massevirke	Annet	Vrak	Snitt
Furu	369				369
Gran	423	230		0	323
Lauv			350		350
Snitt	415	230	350	0	328

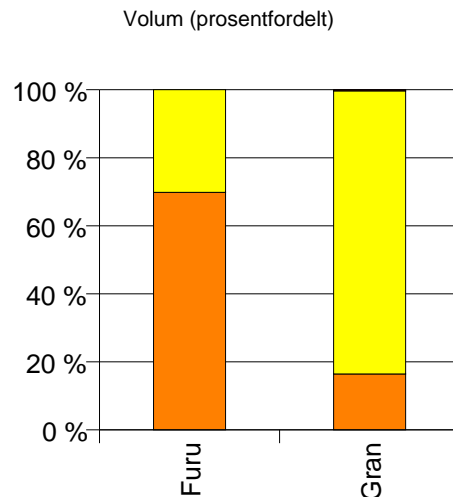
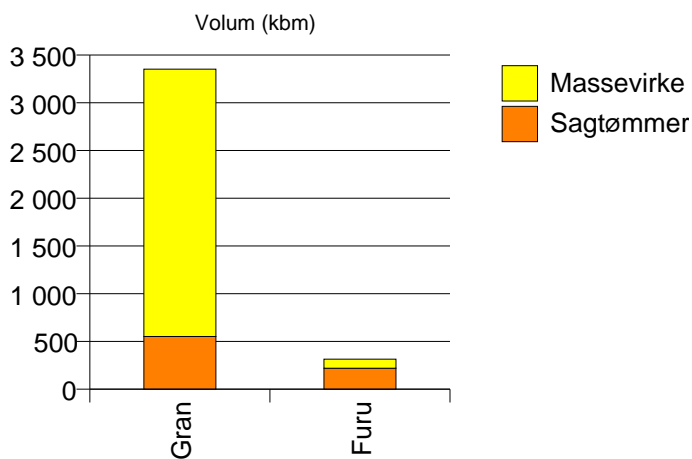
Gjennomsnittspris (kr/kbm)



## 1520 ØRSTA

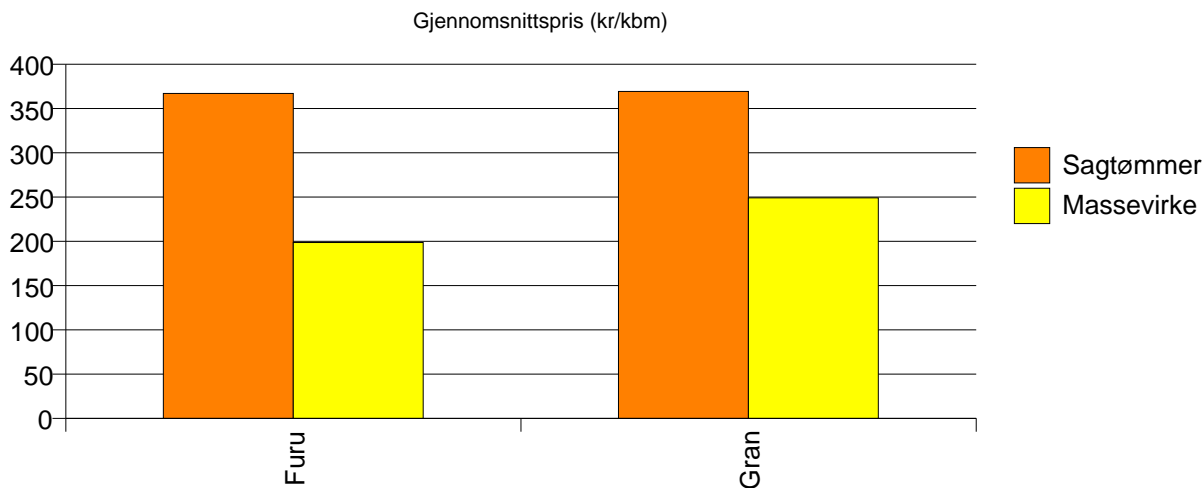
### Volum (kbm)

	Sagtømmer	Massevirke	Vrak	Sum:
Furu	220	95		315
Gran	553	2 799	11	3 363
Sum:	773	2 894	11	3 678



### Gjennomsnittspris (kr/kbm)

	Sagtømmer	Massevirke	Vrak	Snitt
Furu	367	199		316
Gran	369	249	0	268
Snitt	369	247	0	272

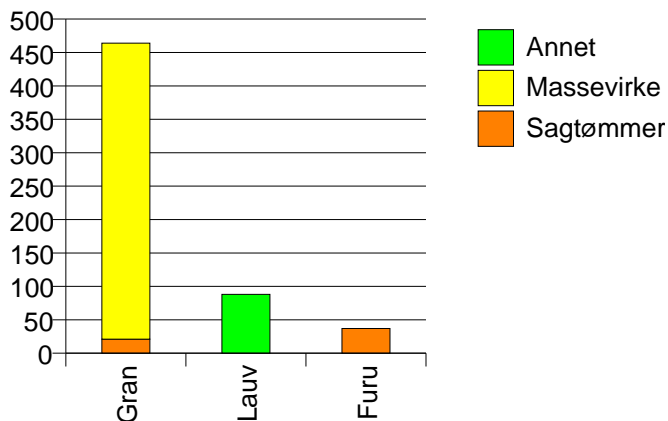


## 1525 STRANDA

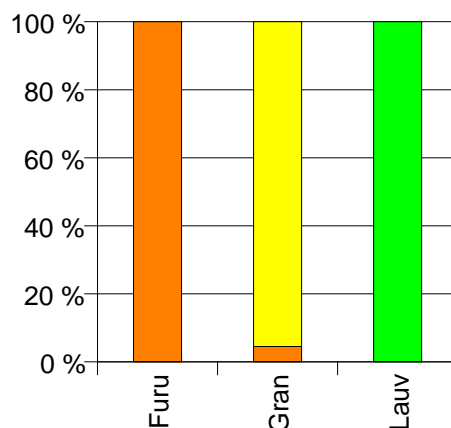
Volum (kbm)

	Sagtømmer	Massevirke	Annet	Sum:
Furu	37			37
Gran	21	443		464
Lauv			88	88
Sum:	58	443	88	589

Volum (kbm)



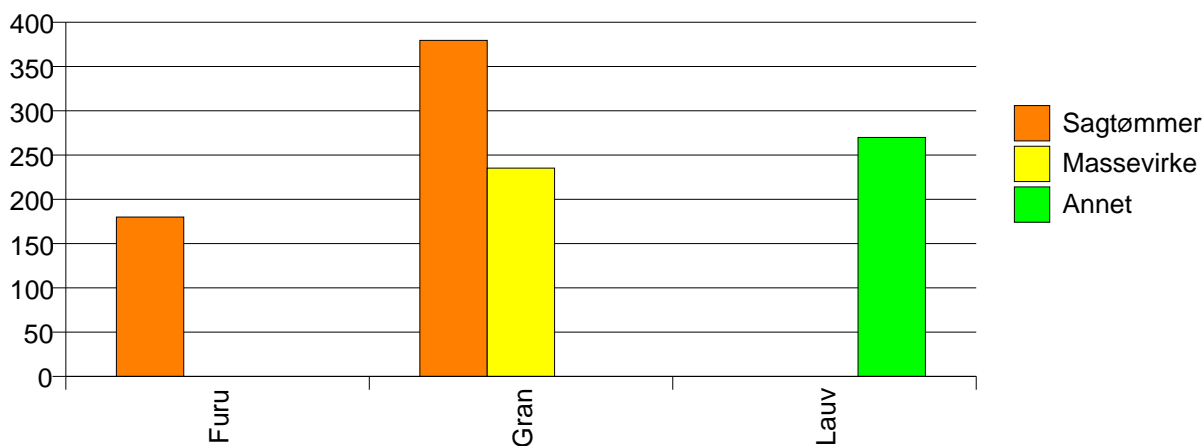
Volum (prosentfordelt)



Gjennomsnittspris (kr/kbm)

	Sagtømmer	Massevirke	Annet	Snitt
Furu	180			180
Gran	380	235		242
Lauv			270	270
Snitt	252	235	270	242

Gjennomsnittspris (kr/kbm)



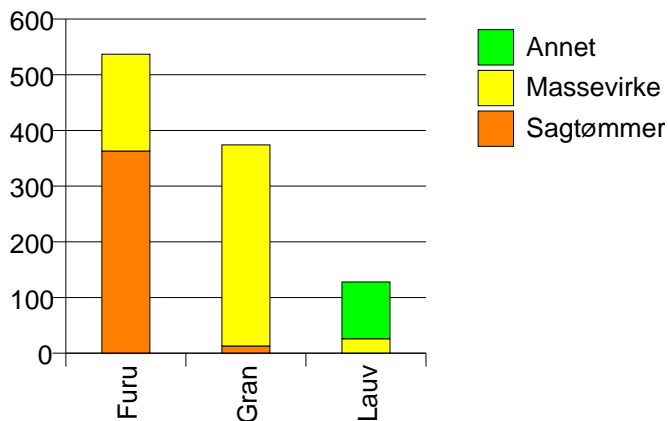


# 1528 SYKKYLVEN

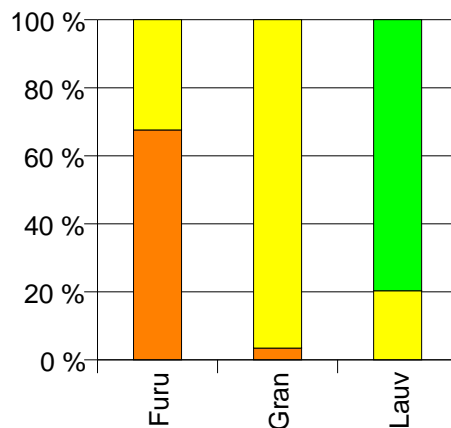
Volum (kbm)

	Sagtømmer	Massevirke	Annet	Sum:
Furu	363	174		537
Gran	13	361		374
Lauv		26	102	128
Sum:	376	561	102	1 039

Volum (kbm)



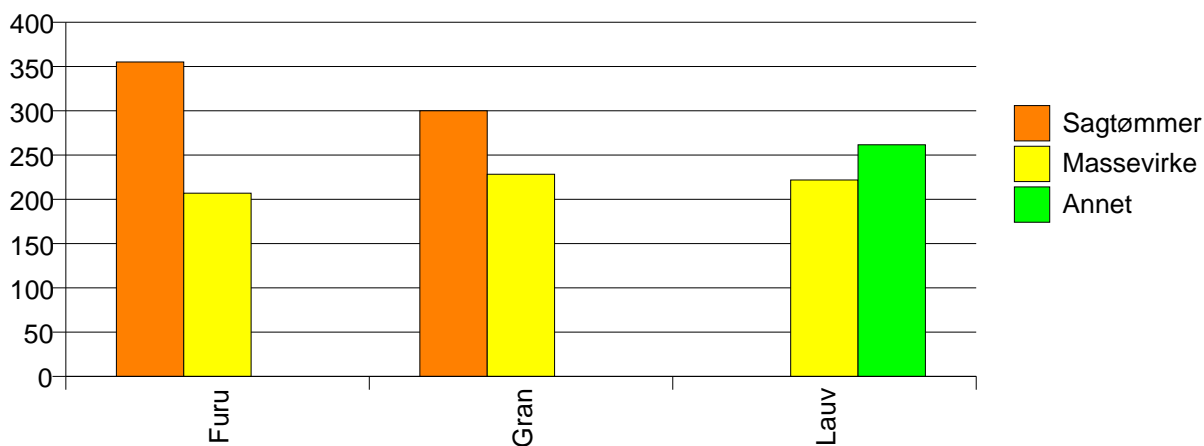
Volum (prosentfordelt)



Gjennomsnittspris (kr/kbm)

	Sagtømmer	Massevirke	Annet	Snitt
Furu	355	207		307
Gran	300	228		231
Lauv		222	262	254
Snitt	353	221	262	273

Gjennomsnittspris (kr/kbm)

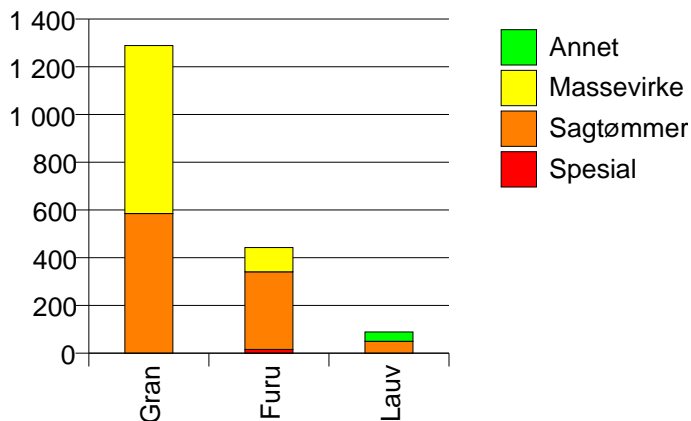


# 1529 SKODJE

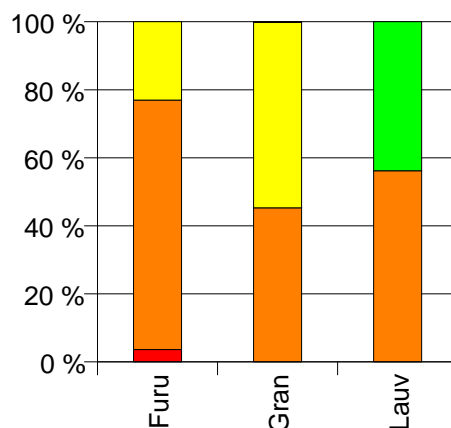
Volum (kbm)

	Spesial	Sagtømmer	Massevirke	Annet	Vrak	Sum:
Furu	16	325	102			443
Gran		585	704		3	1 292
Lauv		50		39		89
Sum:	16	960	806	39	3	1 824

Volum (kbm)



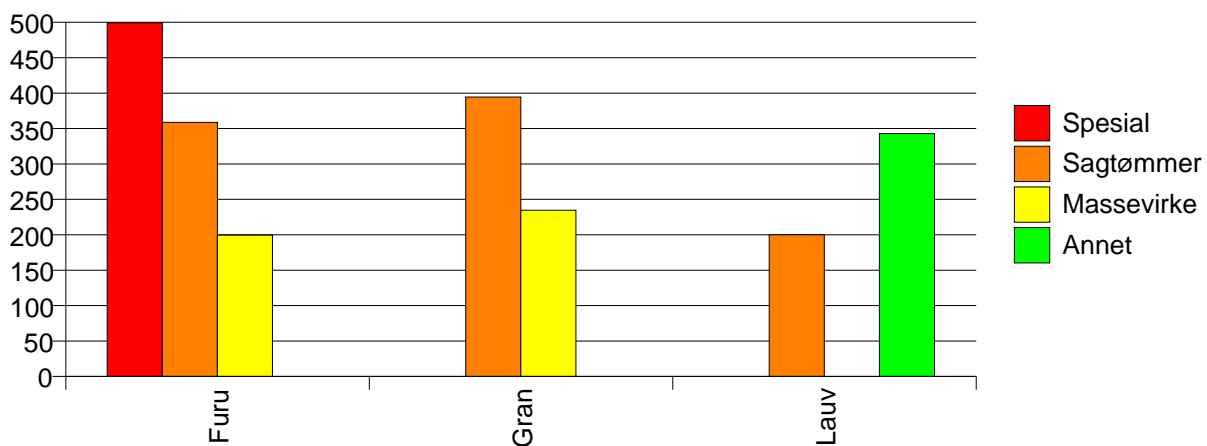
Volum (prosentfordelt)



Gjennomsnittspris (kr/kbm)

	Spesial	Sagtømmer	Massevirke	Annet	Vrak	Snitt
Furu	499	359	199			327
Gran		395	235		0	307
Lauv		200		343		263
Snitt	499	372	230	343	0	309

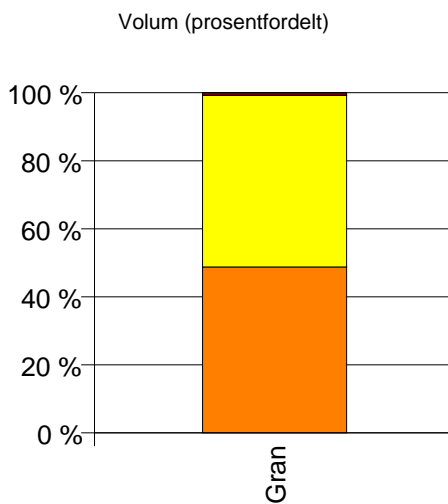
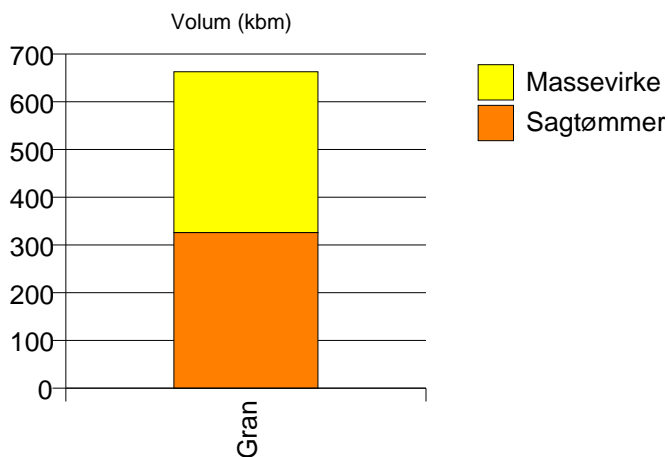
Gjennomsnittspris (kr/kbm)



## 1534 HARAM

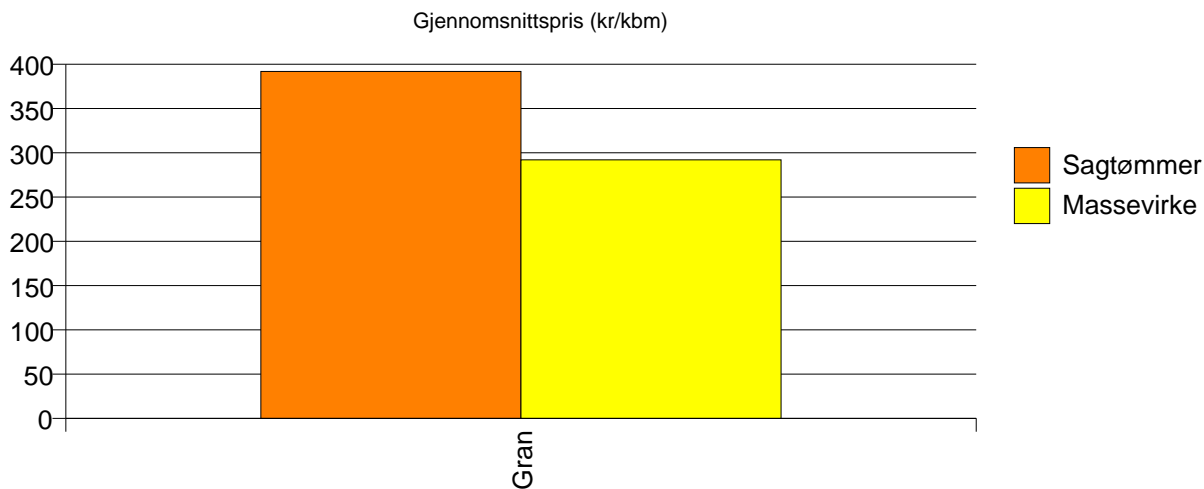
Volum (kbm)

	Sagtømmer	Massevirke	Vrak	Sum:
Gran	326	337	5	668
Sum:	326	337	5	668



Gjennomsnittspris (kr/kbm)

Gran	392	292	0	339
Snitt	392	292	0	339

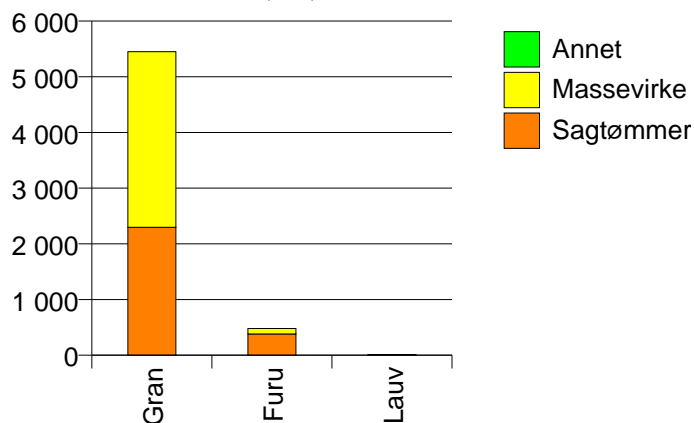


## 1535 VESTNES

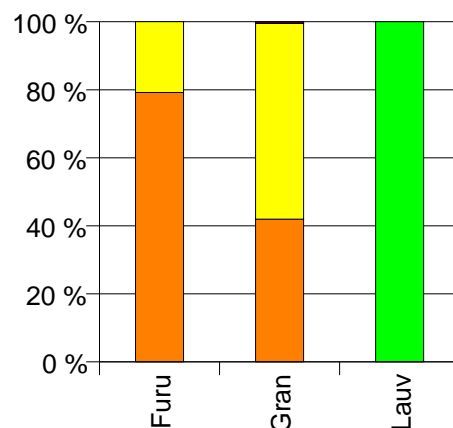
### Volum (kbm)

	Sagtømmer	Massevirke	Annet	Vrak	Sum:
Furu	381	100			481
Gran	2 298	3 153		26	5 477
Lauv			14		14
Sum:	2 679	3 253	14	26	5 972

Volum (kbm)



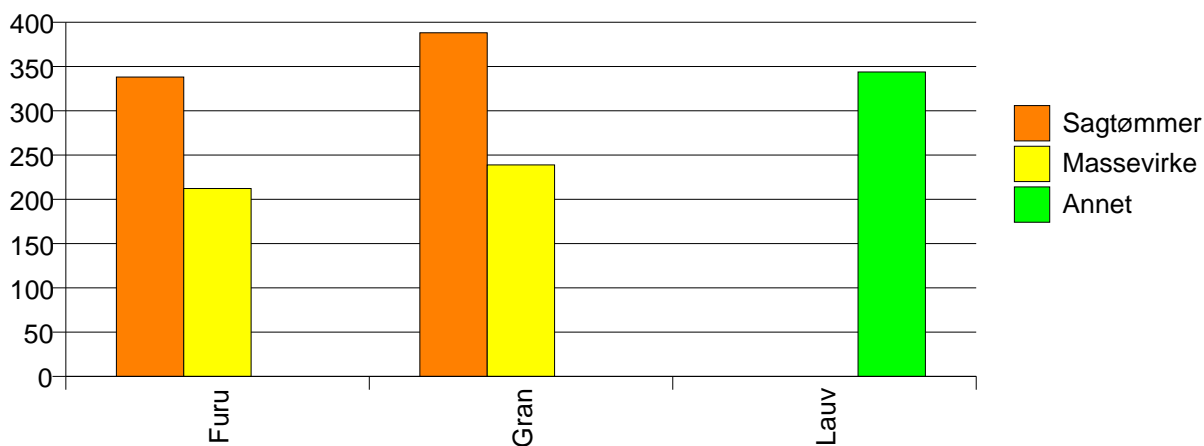
Volum (prosentfordelt)



### Gjennomsnittspris (kr/kbm)

	Sagtømmer	Massevirke	Annet	Vrak	Snitt
Furu	338	212			312
Gran	388	239		0	300
Lauv			344		344
Snitt	381	238	344	0	301

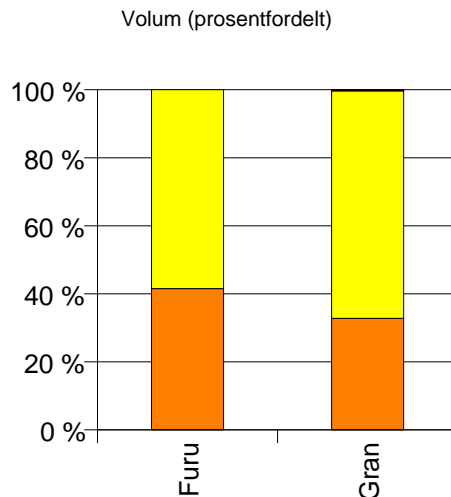
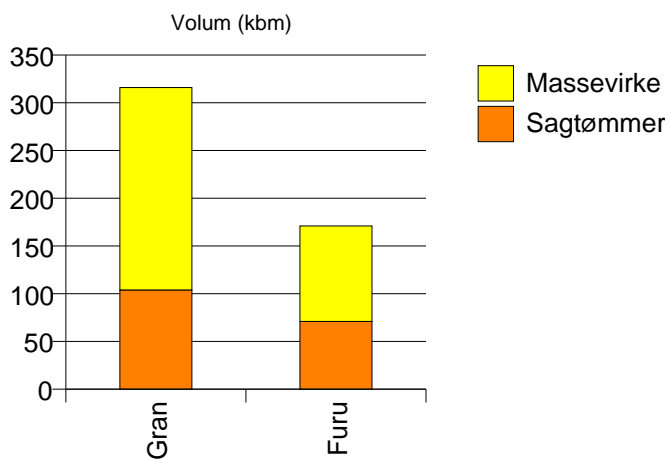
Gjennomsnittspris (kr/kbm)



# 1548 FRÆNA

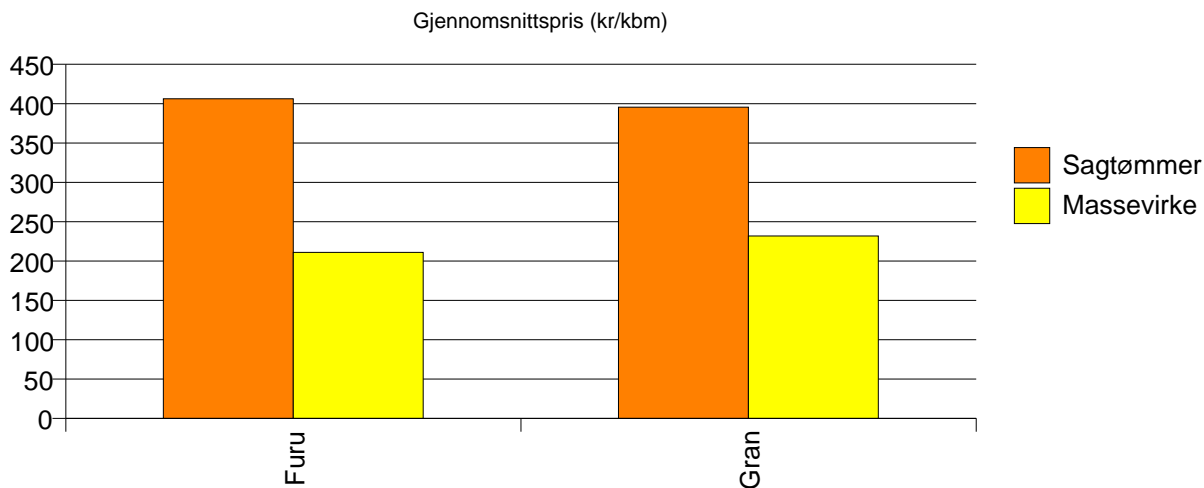
## Volum (kbm)

	Sagtømmer	Massevirke	Vrak	Sum:
Furu	71	100	0	171
Gran	104	212	1	317
Sum:	175	312	1	488



## Gjennomsnittspris (kr/kbm)

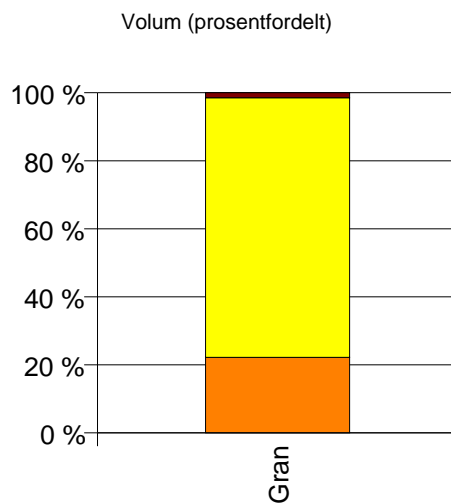
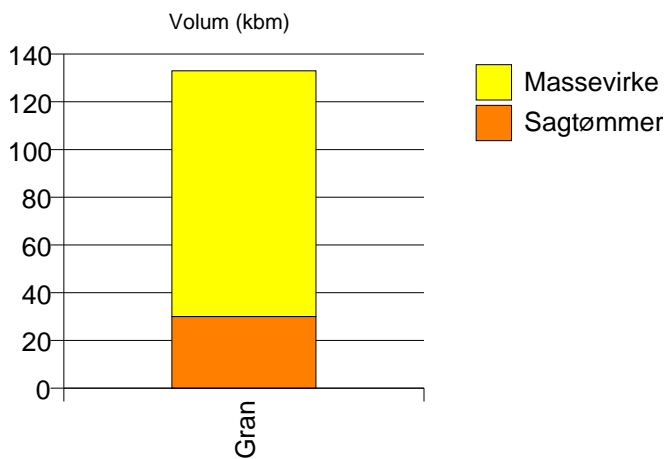
	Sagtømmer	Massevirke	Vrak	Snitt
Furu	406	211	#DIV/0	292
Gran	395	232	0	285
Snitt	400	225	0	287



# 1554 AVERØY

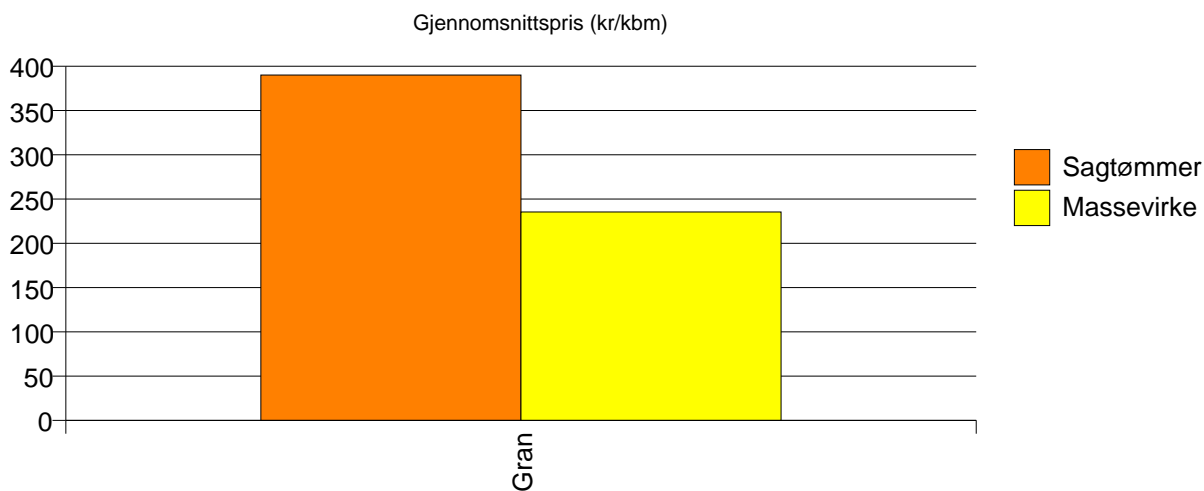
Volum (kbm)

	Sagtømmer	Massevirke	Vrak	Sum:
Gran	30	103	2	135
Sum:	30	103	2	135



Gjennomsnittspris (kr/kbm)

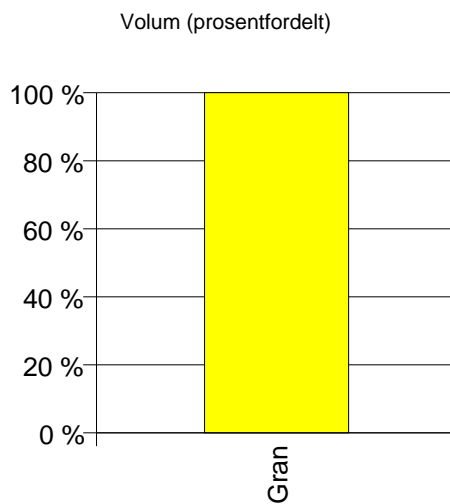
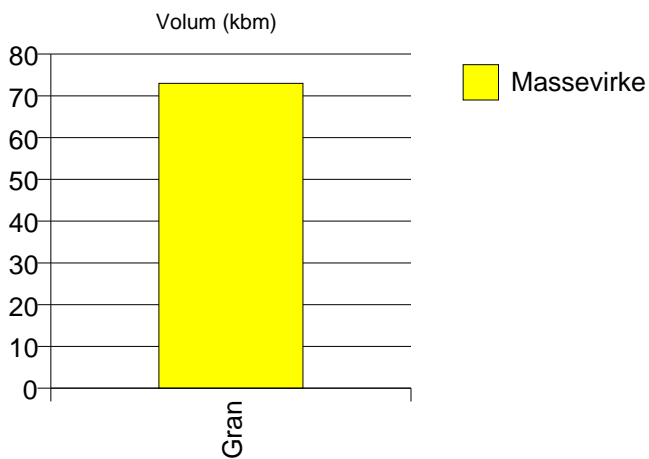
Gran	390	235	0	266
Snitt	390	235	0	266



# 1514 SANDE

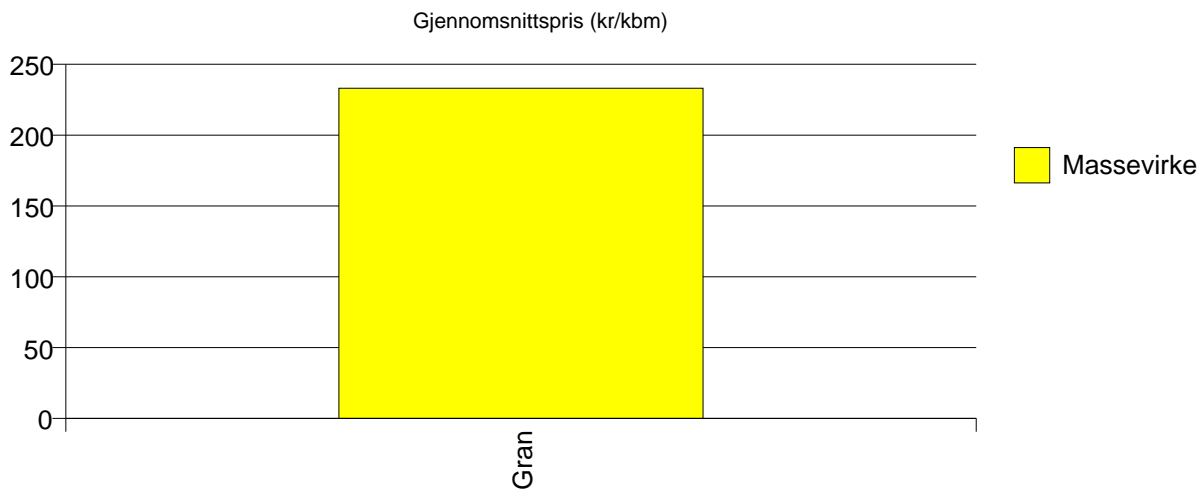
Volum (kbm)

	Massevirke	Sum:
Gran	73	73
Sum:	73	73



Gjennomsnittspris (kr/kbm)

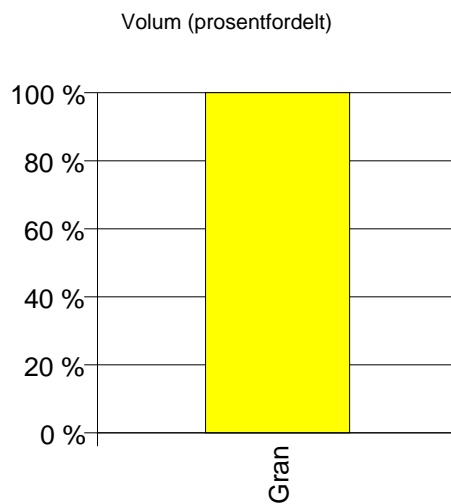
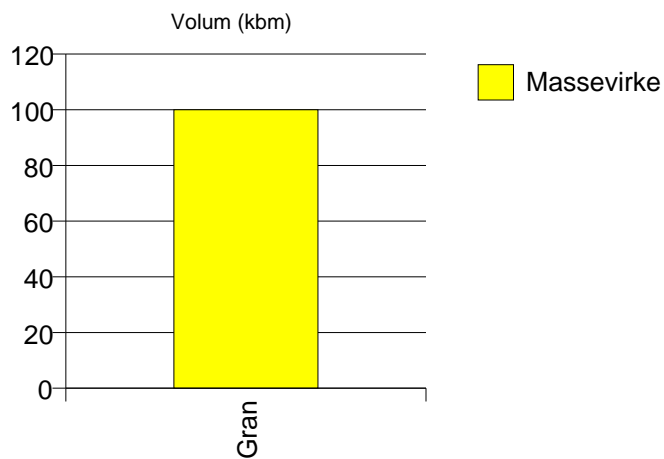
Gran	233	233
Snitt	233	233



# 1523 ØRSKOG

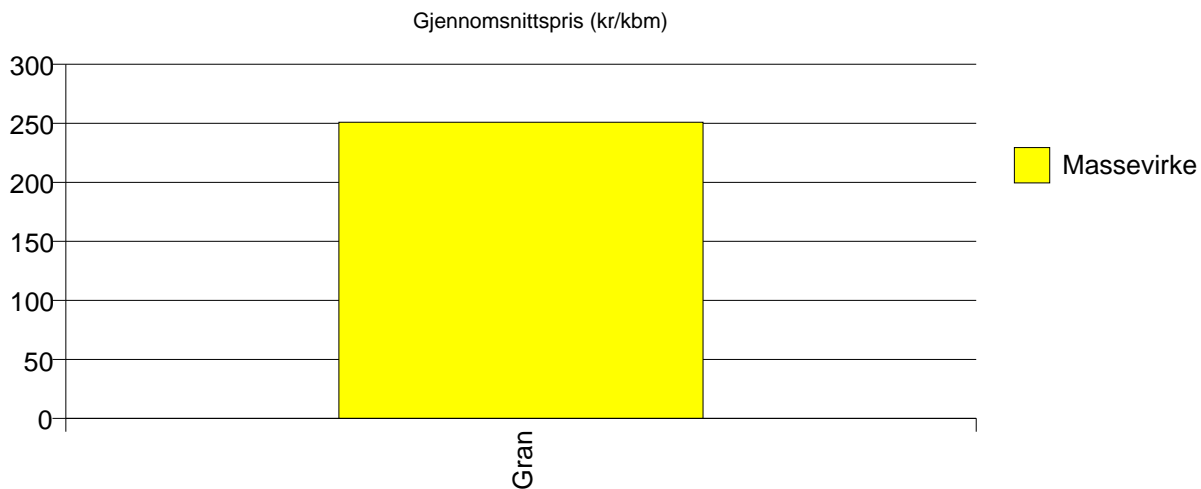
Volum (kbm)

	Massevirke	Sum:
Gran	100	100
Sum:	100	100



Gjennomsnittspris (kr/kbm)

Gran	251	251
Snitt	251	251

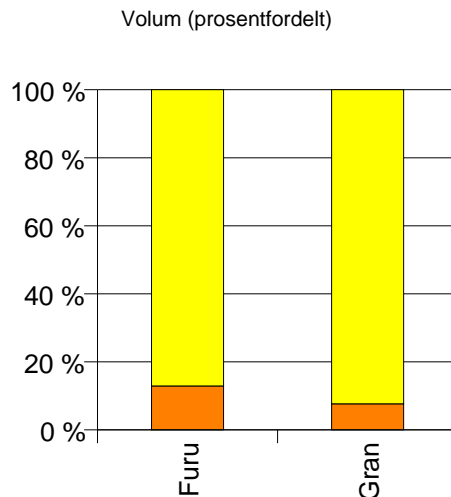
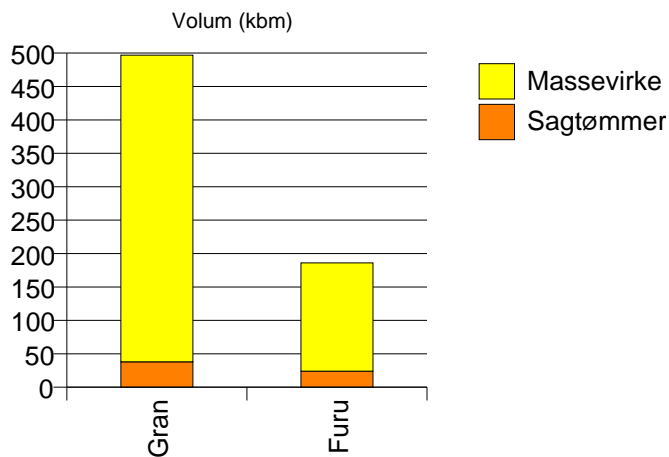




## 1524 NORDDAL

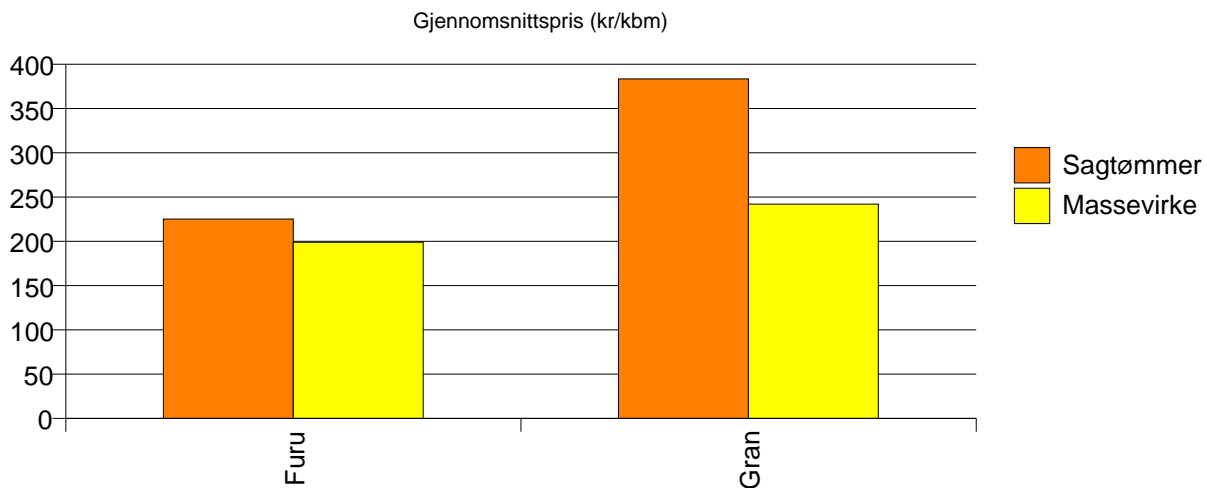
Volum (kbm)

	Sagtømmer	Massevirke	Sum:
Furu	24	162	186
Gran	38	459	497
Sum:	62	621	683



Gjennomsnittspris (kr/kbm)

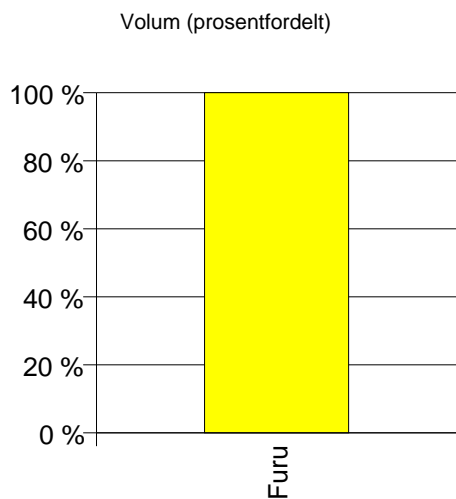
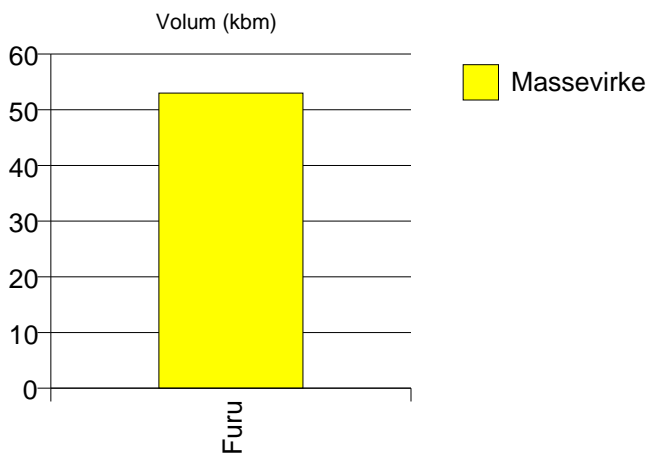
	Sagtømmer	Massevirke	Snitt
Furu	225	199	202
Gran	384	242	253
Snitt	322	231	239



# 1504 ÅLESUND

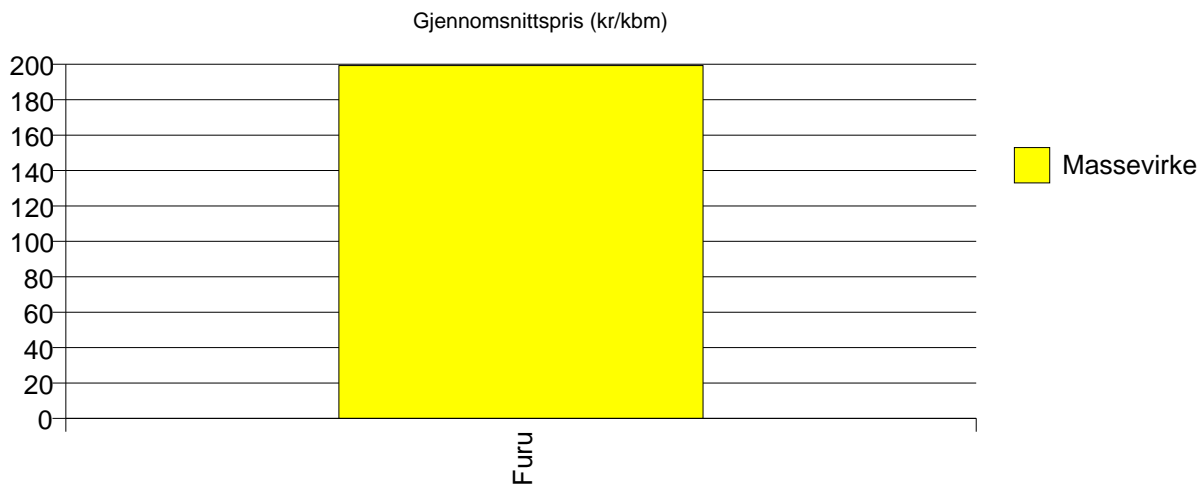
Volum (kbm)

	Massevirke	Sum:
Furu	53	53
Sum:	53	53



Gjennomsnittspris (kr/kbm)

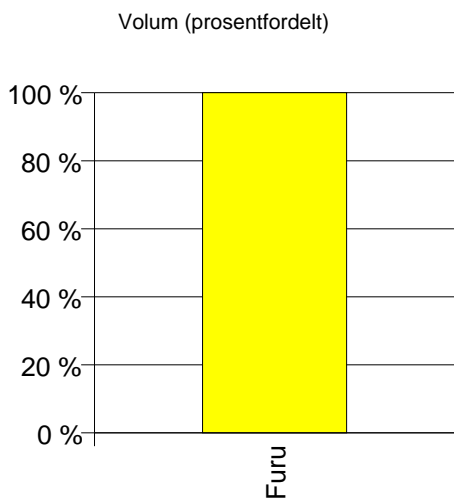
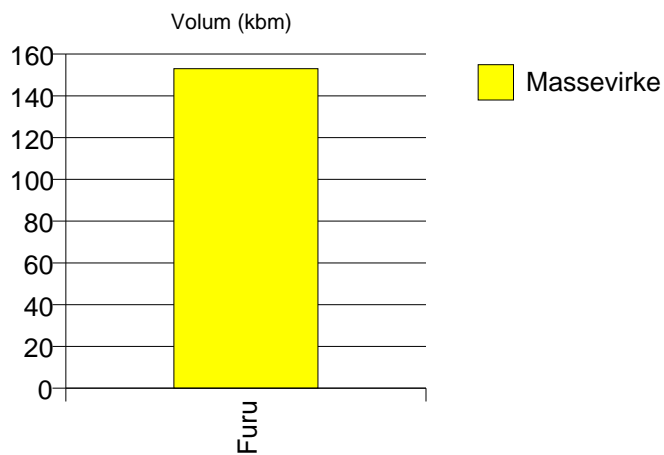
Furu	199	199
Snitt	199	199



# 1515 HERØY

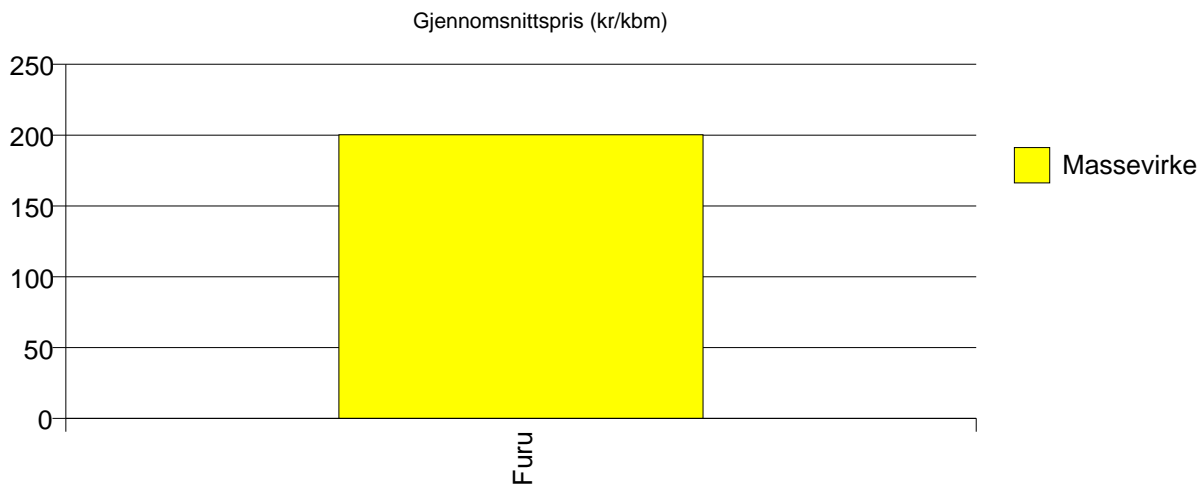
Volum (kbm)

	Massevirke	Sum:
Furu	153	153
Sum:	153	153



Gjennomsnittspris (kr/kbm)

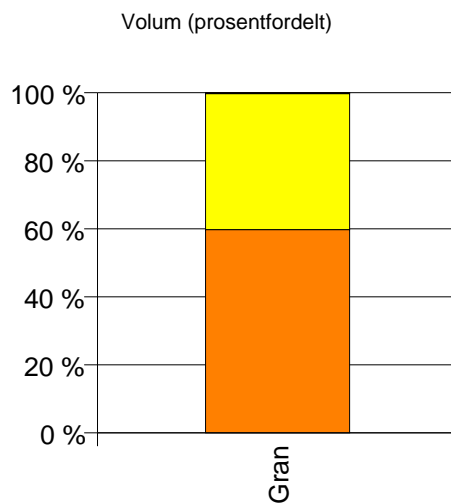
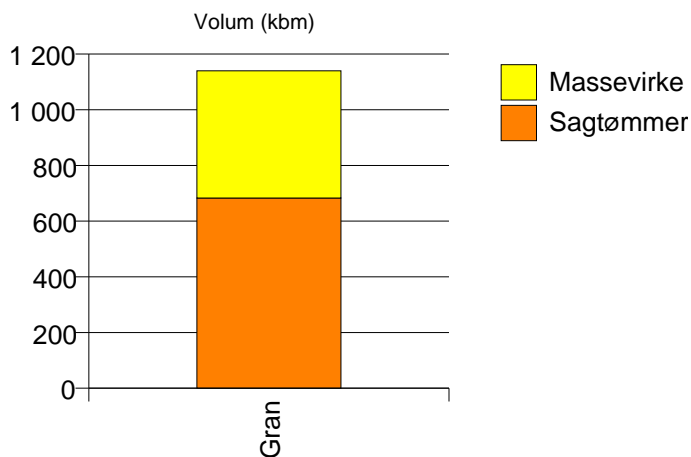
Furu	200	200
Snitt	200	200



## 1526 STORDAL

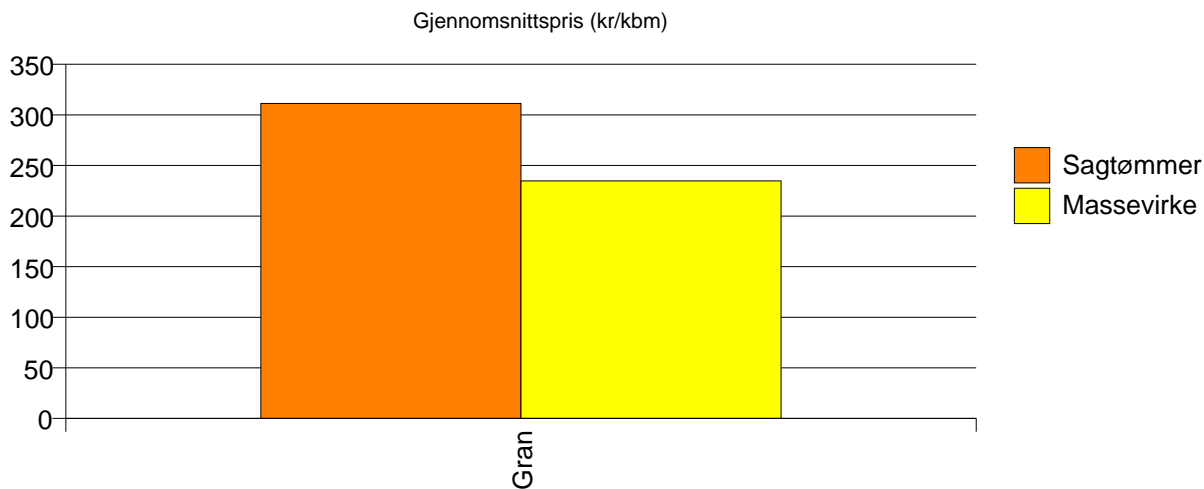
Volum (kbm)

	Sagtømmer	Massevirke	Vrak	Sum:
Gran	683	457	3	1 143
Sum:	683	457	3	1 143



Gjennomsnittspris (kr/kbm)

Gran	311	235	0	280
Snitt	311	235	0	280

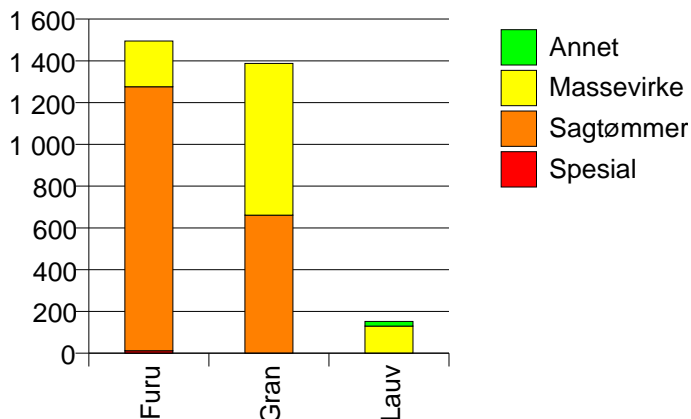


# 1576 AURE

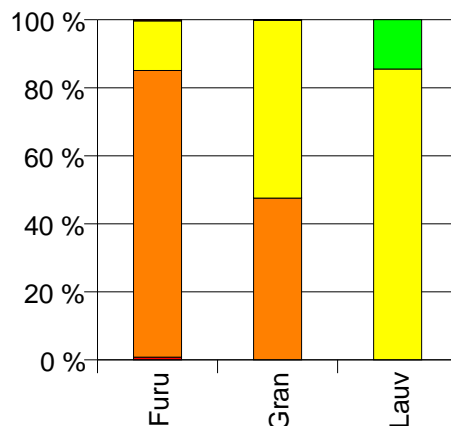
## Volum (kbm)

	Spesial	Sagtømmer	Massevirke	Annet	Vrak	Sum:
Furu	12	1 264	219		5	1 500
Gran		661	727		2	1 390
Lauv			130	22		152
Sum:	12	1 925	1 076	22	7	3 042

Volum (kbm)



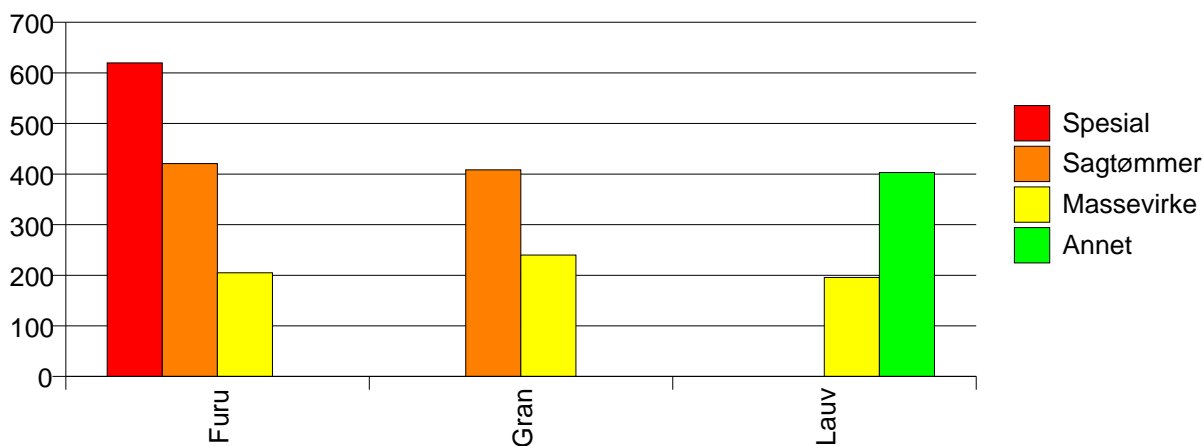
Volum (prosentfordelt)



## Gjennomsnittspris (kr/kbm)

	Spesial	Sagtømmer	Massevirke	Annet	Vrak	Snitt
Furu	620	421	205		0	390
Gran		408	240		0	320
Lauv			196	403		226
Snitt	620	417	227	403	0	349

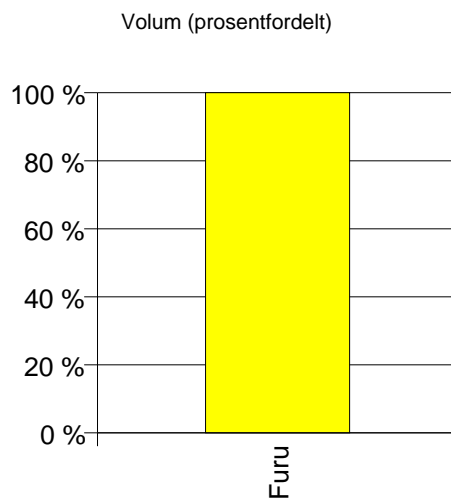
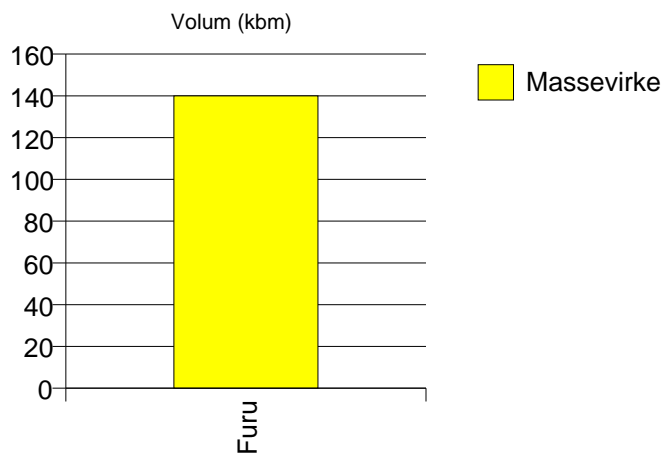
Gjennomsnittspris (kr/kbm)



# 1532 GISKE

Volum (kbm)

	Massevirke	Sum:
Furu	140	140
Sum:	140	140



Gjennomsnittspris (kr/kbm)

Furu	200	200
Snitt	200	200

