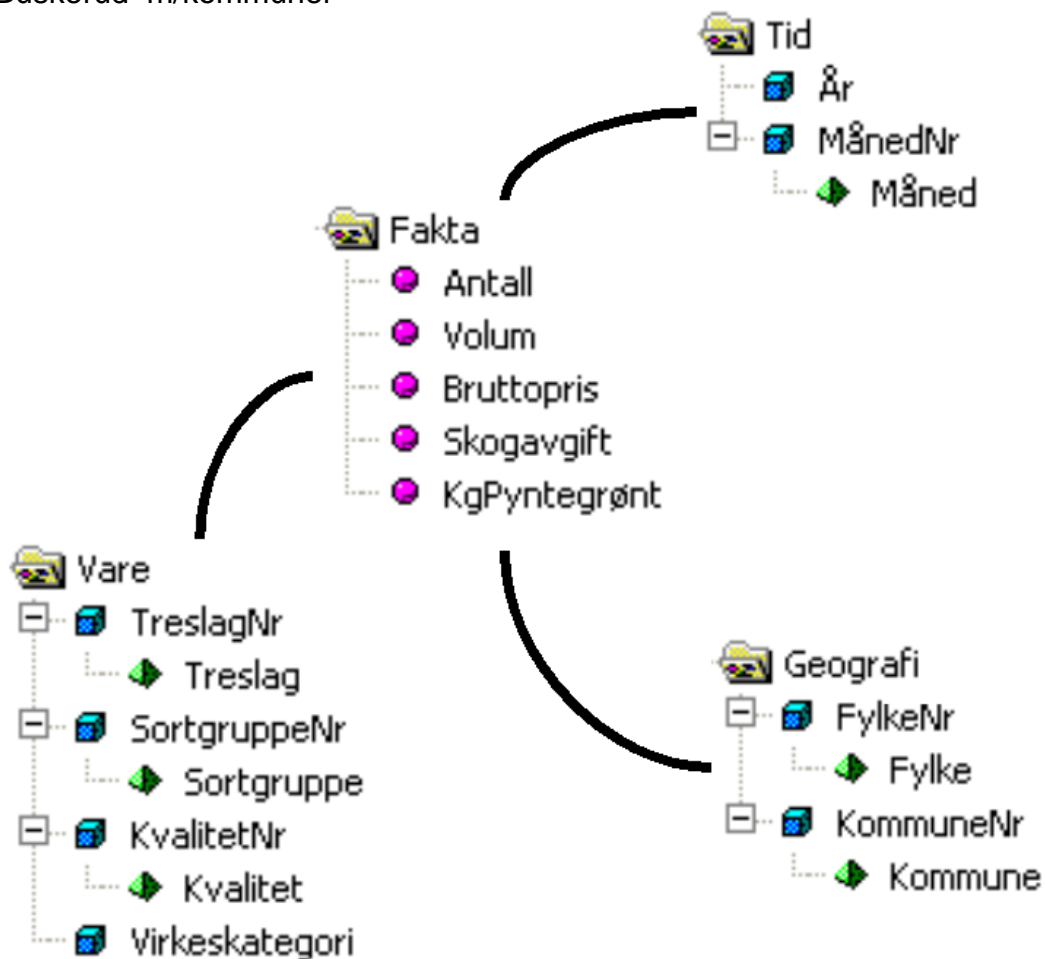


# Virkestatistikk fra SKOG-DATA AS

Buskerud m/kommuner



Dataene i rapporten er hentet fra databasen som inneholder virkesdata med tilhørende innbetalinger av skogavgift. Rapporten er laget med Business Objects, som er sluttbrukerverktøyet i Skog-Data sine nye datavarehus-løsninger. Business Objects er ett meget sterkt rapportverktøy som kan presentere store mengder data effektivt.

Rapportene kan lastes ned fra [www.skogdata.no/statistikk](http://www.skogdata.no/statistikk)

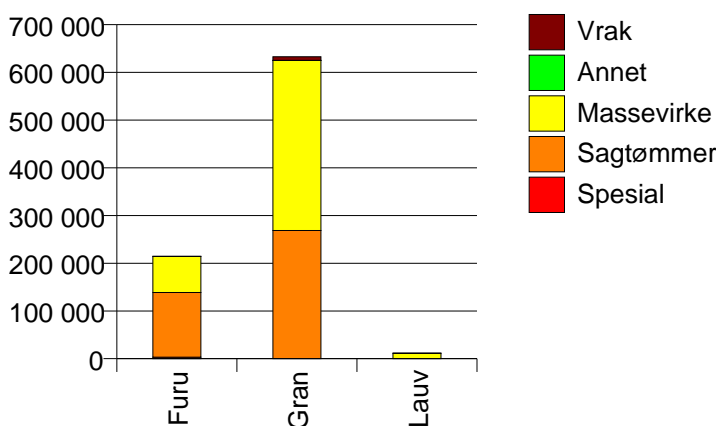
For mer informasjon, kontakt: [alexanderh@skogdata.no](mailto:alexanderh@skogdata.no)

## Buskerud

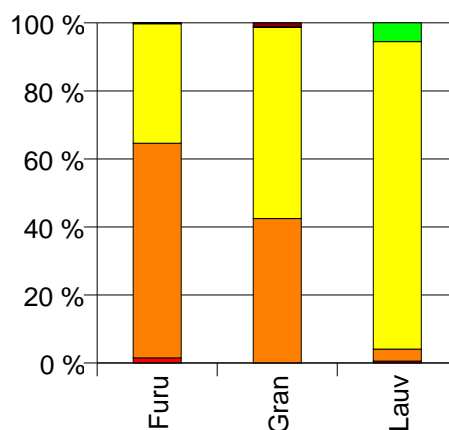
### Volum 2003

|      | Spesial | Sagtømmer | Massevirke | Annet | Vrak  | Sum:    |
|------|---------|-----------|------------|-------|-------|---------|
| Furu | 3 252   | 135 543   | 75 430     | 413   | 123   | 214 761 |
| Gran | 30      | 268 611   | 356 046    | 212   | 7 646 | 632 545 |
| Lauv | 69      | 415       | 10 630     | 646   |       | 11 760  |
| Sum: | 3 351   | 404 569   | 442 106    | 1 271 | 7 769 | 859 066 |

Volum (kbm)



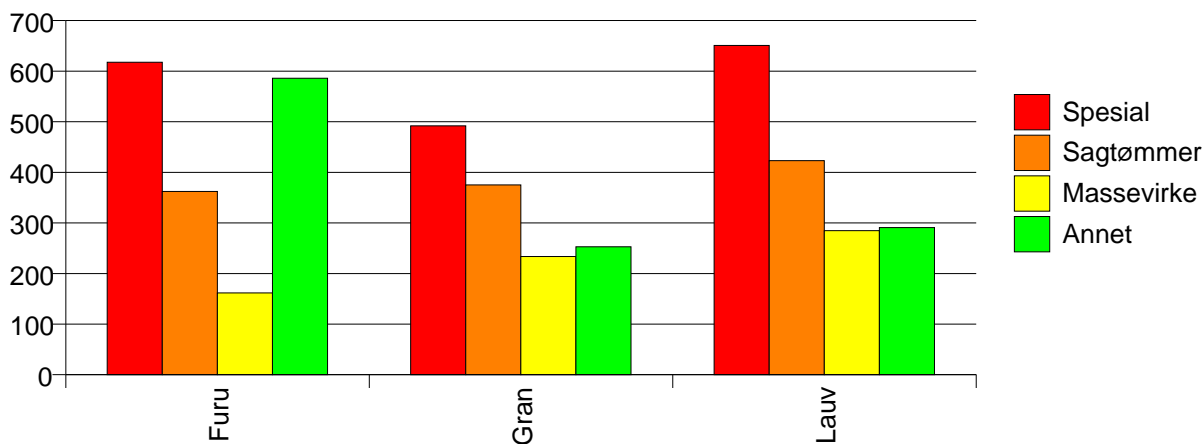
Volum (prosentfordelt)



### Gjennomsnittspris 2003 (kr/kbm)

|        | Spesial | Sagtømmer | Massevirke | Annet | Vrak | Snitt: |
|--------|---------|-----------|------------|-------|------|--------|
| Furu   | 618     | 362       | 162        | 586   | 0    | 296    |
| Gran   | 492     | 375       | 234        | 253   | 0    | 291    |
| Lauv   | 651     | 423       | 285        | 291   |      | 292    |
| Snitt: | 617     | 371       | 223        | 380   | 0    | 292    |

Gjennomsnittspris (kr/kbm)

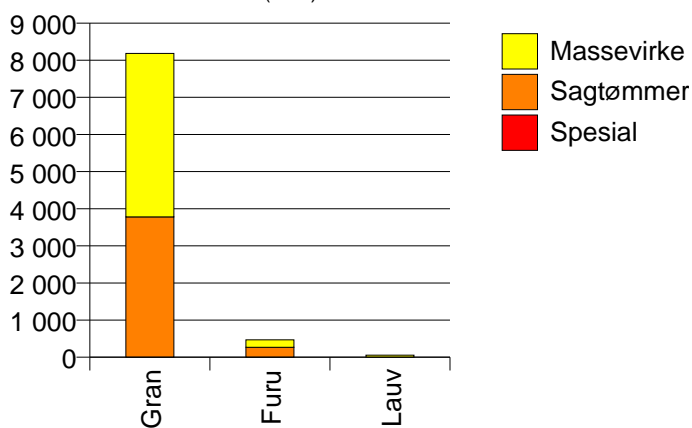


## 602 DRAMMEN

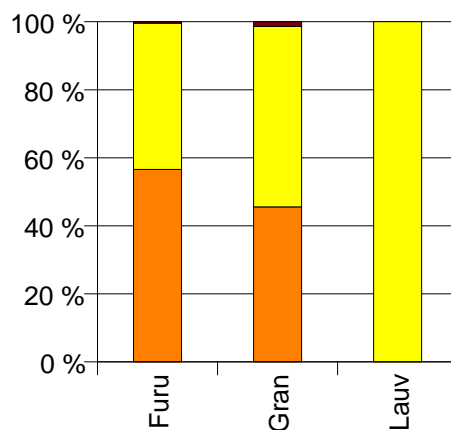
Volum 2003 (kbm)

|      | Spesial | Sagtømmer | Massevirke | Vrak | Sum:  |
|------|---------|-----------|------------|------|-------|
| Furu | 0       | 266       | 202        | 2    | 470   |
| Gran |         | 3 781     | 4 403      | 116  | 8 300 |
| Lauv | 0       | 0         | 54         |      | 54    |
| Sum: | 0       | 4 047     | 4 659      | 118  | 8 824 |

Volum (kbm)



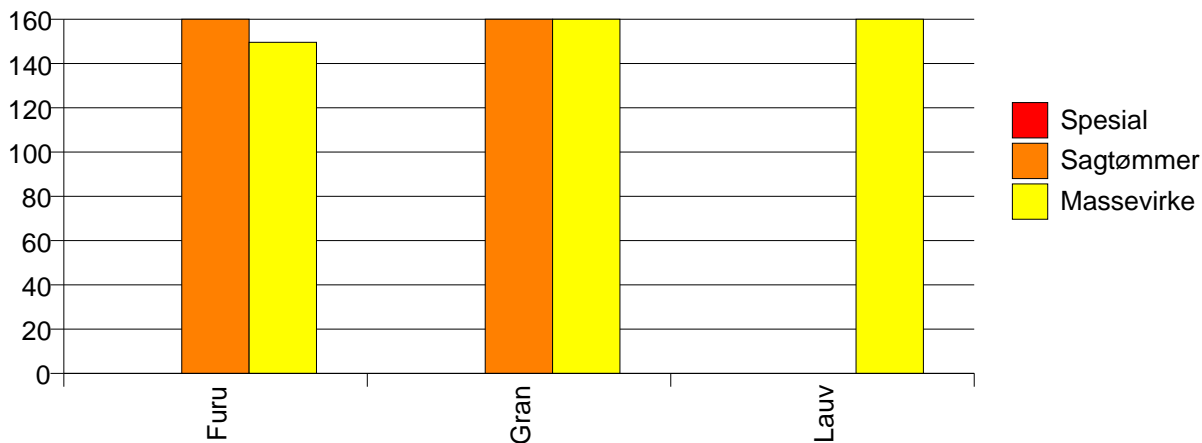
Volum (prosentfordelt)



Gjennomsnittspris 2003 (kr/kbm)

|       | Spesial | Sagtømmer | Massevirke | Vrak | Snitt |
|-------|---------|-----------|------------|------|-------|
| Furu  | #DIV/0  | 349       | 150        | 0    | 262   |
| Gran  |         | 377       | 226        | 0    | 292   |
| Lauv  | #DIV/0  | #DIV/0    | 267        |      | 268   |
| Snitt | #DIV/0  | 376       | 223        | 0    | 290   |

Gjennomsnittspris (kr/kbm)

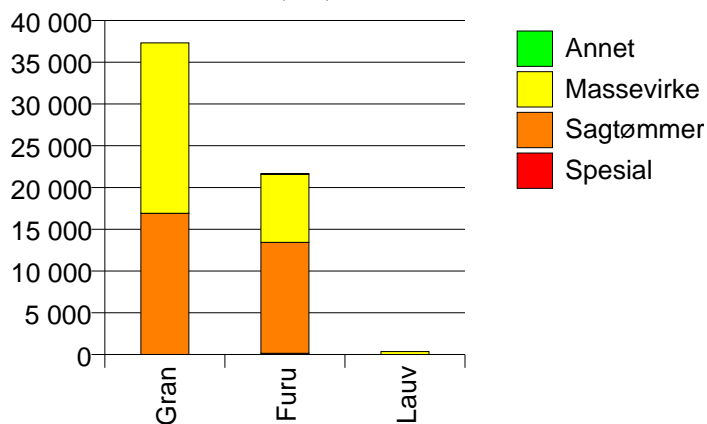


## 604 KONGSBERG

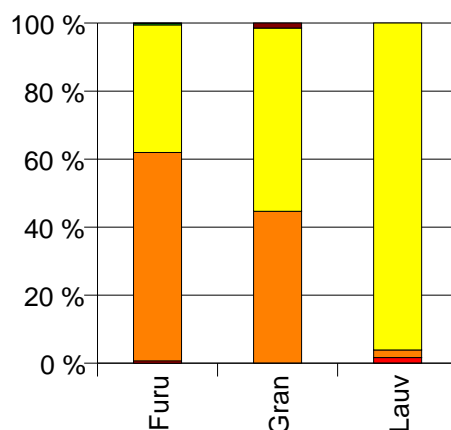
Volum 2003 (kbm)

|      | Spesial | Sagtømmer | Massevirke | Annet | Vrak | Sum:   |
|------|---------|-----------|------------|-------|------|--------|
| Furu | 145     | 13 287    | 8 136      | 96    | 17   | 21 681 |
| Gran |         | 16 918    | 20 393     |       | 564  | 37 875 |
| Lauv | 6       | 8         | 346        |       |      | 360    |
| Sum: | 151     | 30 213    | 28 875     | 96    | 581  | 59 916 |

Volum (kbm)



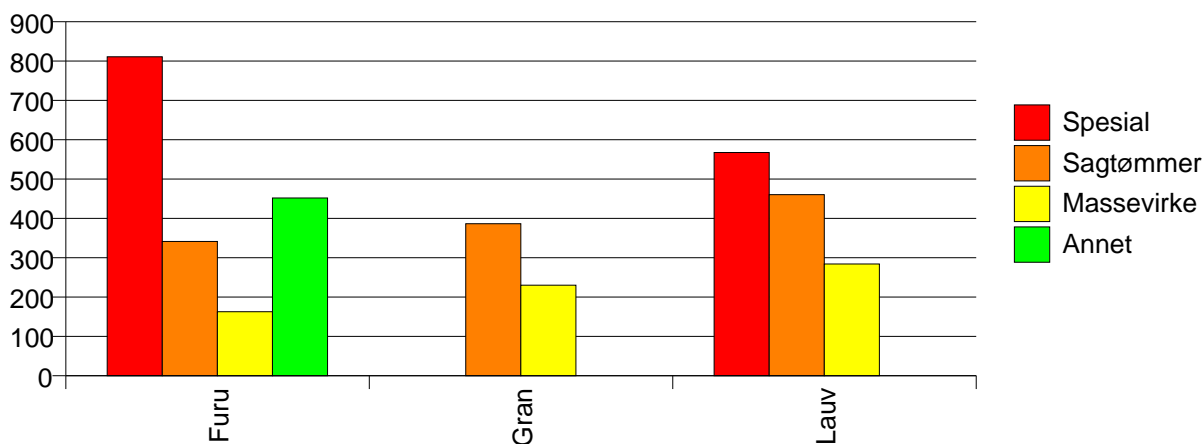
Volum (prosentfordelt)



Gjennomsnittspris 2003 (kr/kbm)

|       | Spesial | Sagtømmer | Massevirke | Annet | Vrak | Snitt |
|-------|---------|-----------|------------|-------|------|-------|
| Furu  | 811     | 342       | 163        | 452   | 0    | 278   |
| Gran  |         | 387       | 230        |       | 0    | 297   |
| Lauv  | 568     | 461       | 284        |       |      | 293   |
| Snitt | 801     | 367       | 212        | 452   | 0    | 290   |

Gjennomsnittspris (kr/kbm)

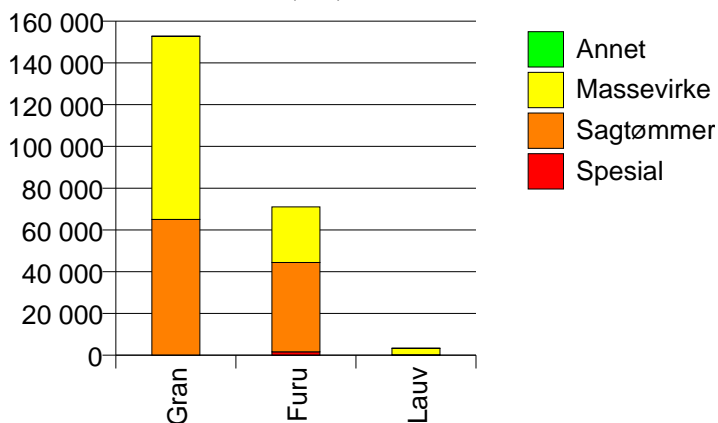


## 605 RINGERIKE

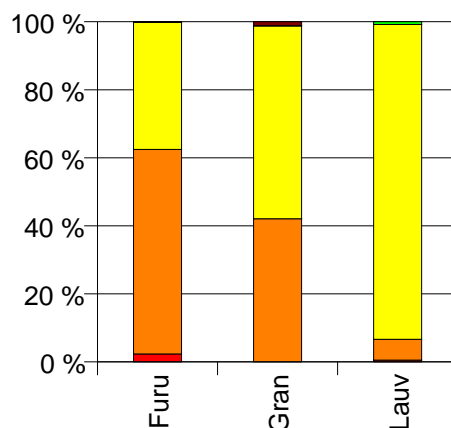
Volum 2003 (kbm)

|      | Spesial | Sagtømmer | Massevirke | Annet | Vrak  | Sum:    |
|------|---------|-----------|------------|-------|-------|---------|
| Furu | 1 660   | 42 770    | 26 602     | 29    | 46    | 71 107  |
| Gran | 0       | 65 034    | 87 647     | 63    | 1 813 | 154 557 |
| Lauv | 18      | 203       | 3 074      | 27    |       | 3 322   |
| Sum: | 1 678   | 108 007   | 117 323    | 119   | 1 859 | 228 986 |

Volum (kbm)



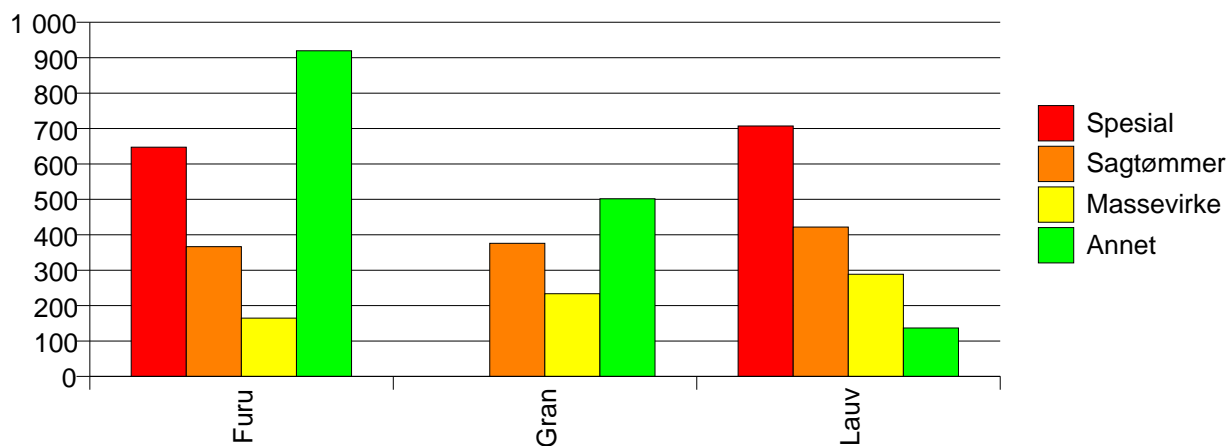
Volum (prosentfordelt)



Gjennomsnittspris 2003 (kr/kbm)

|       | Spesial | Sagtømmer | Massevirke | Annet | Vrak | Snitt |
|-------|---------|-----------|------------|-------|------|-------|
| Furu  | 647     | 367       | 165        | 920   | 0    | 298   |
| Gran  | #DIV/0  | 376       | 234        | 502   | 0    | 291   |
| Lauv  | 707     | 422       | 288        | 137   |      | 298   |
| Snitt | 648     | 372       | 219        | 521   | 0    | 293   |

Gjennomsnittspris (kr/kbm)

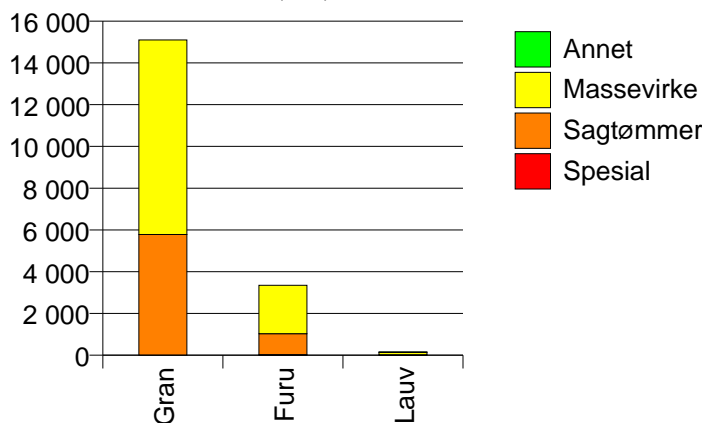


## 612 HOLE

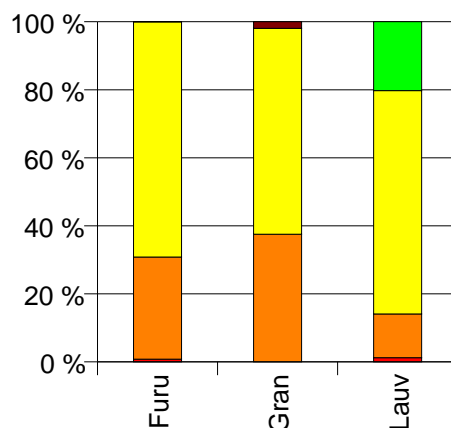
Volum 2003 (kbm)

|      | Spesial | Sagtømmer | Massevirke | Annet | Vrak | Sum:   |
|------|---------|-----------|------------|-------|------|--------|
| Furu | 27      | 1 005     | 2 316      |       | 1    | 3 349  |
| Gran |         | 5 780     | 9 319      |       | 300  | 15 399 |
| Lauv | 2       | 21        | 107        | 33    |      | 163    |
| Sum: | 29      | 6 806     | 11 742     | 33    | 301  | 18 911 |

Volum (kbm)



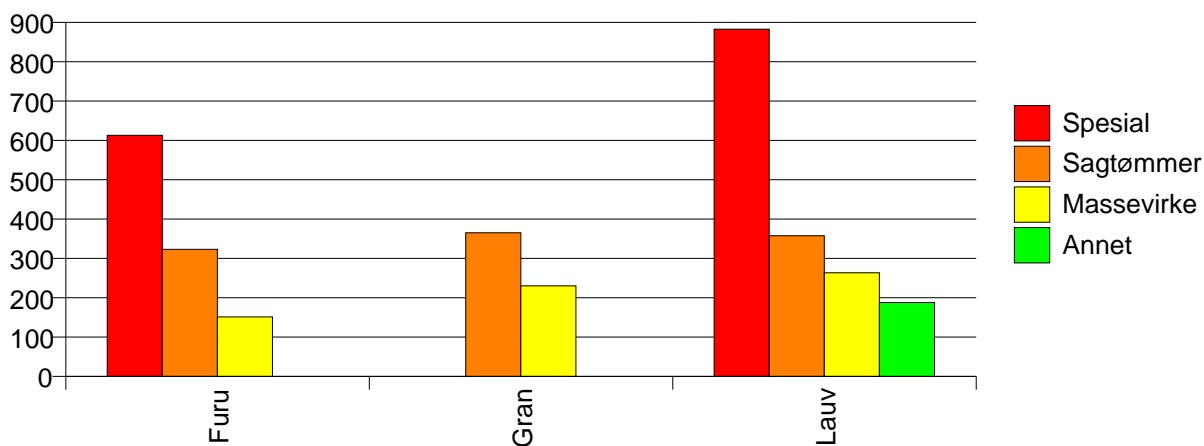
Volum (prosentfordelt)



Gjennomsnittspris 2003 (kr/kbm)

|       | Spesial | Sagtømmer | Massevirke | Annet | Vrak | Snitt |
|-------|---------|-----------|------------|-------|------|-------|
| Furu  | 613     | 323       | 151        |       | 0    | 206   |
| Gran  |         | 365       | 230        |       | 0    | 276   |
| Lauv  | 883     | 358       | 263        | 188   |      | 268   |
| Snitt | 631     | 359       | 215        | 188   | 0    | 264   |

Gjennomsnittspris (kr/kbm)

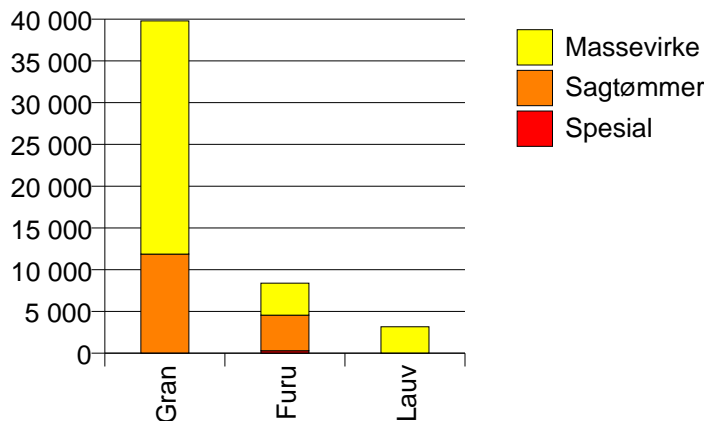


# 615 FLÅ

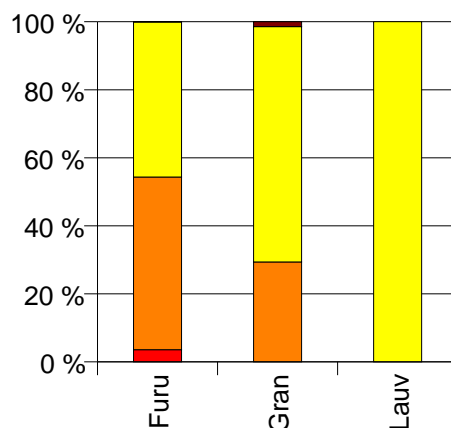
## Volum 2003 (kbm)

|      | Spesial | Sagtømmer | Massevirke | Vrak | Sum:   |
|------|---------|-----------|------------|------|--------|
| Furu | 301     | 4 257     | 3 823      | 4    | 8 385  |
| Gran |         | 11 863    | 27 917     | 576  | 40 356 |
| Lauv | 0       | 1         | 3 163      |      | 3 164  |
| Sum: | 301     | 16 121    | 34 903     | 580  | 51 905 |

Volum (kbm)



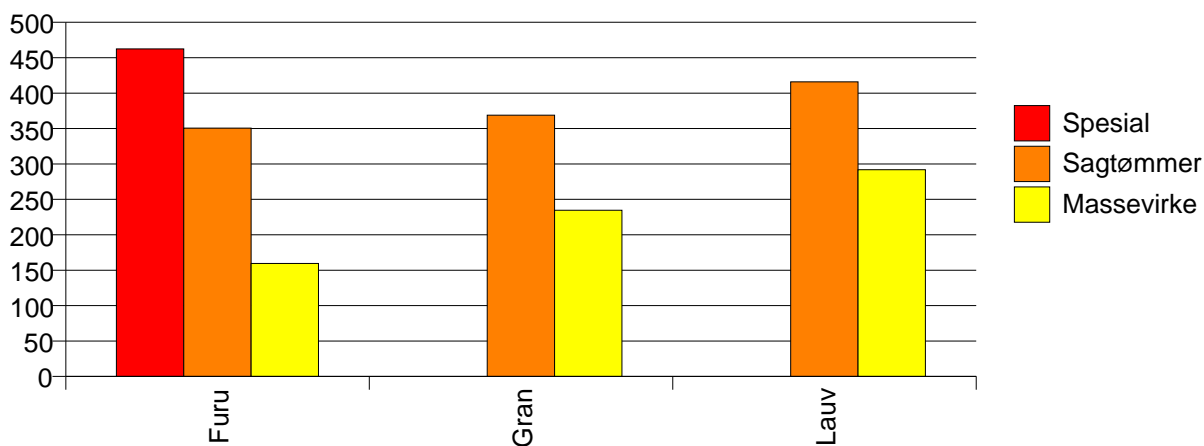
Volum (prosentfordelt)



## Gjennomsnittspris 2003 (kr/kbm)

|       | Spesial | Sagtømmer | Massevirke | Vrak | Snitt |
|-------|---------|-----------|------------|------|-------|
| Furu  | 462     | 351       | 160        | 0    | 267   |
| Gran  |         | 369       | 235        | 0    | 271   |
| Lauv  | #DIV/0  | 416       | 292        |      | 292   |
| Snitt | 463     | 364       | 232        | 0    | 271   |

Gjennomsnittspris (kr/kbm)

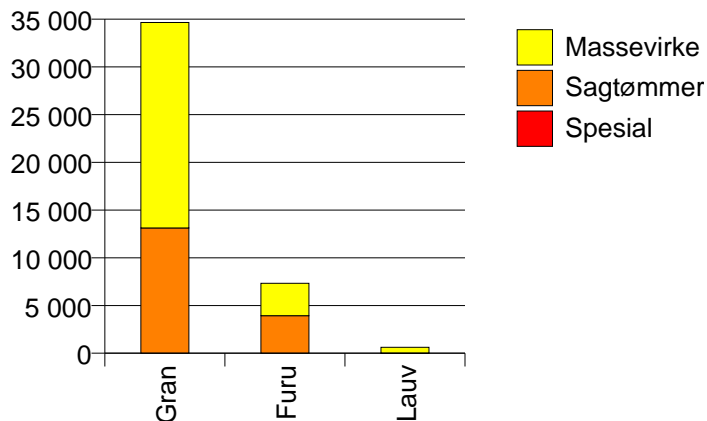


## 616 NES

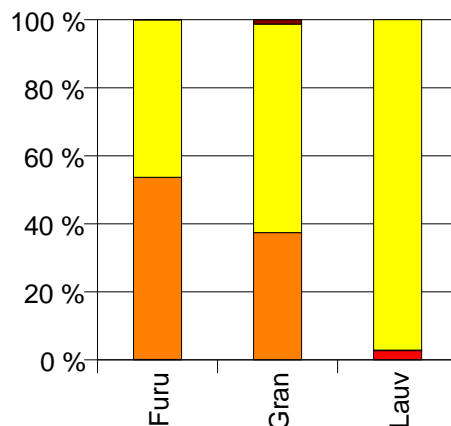
### Volum 2003 (kbm)

|      | Spesial | Sagtømmer | Massevirke | Vrak | Sum:   |
|------|---------|-----------|------------|------|--------|
| Furu | 11      | 3 923     | 3 391      | 1    | 7 326  |
| Gran |         | 13 125    | 21 524     | 444  | 35 093 |
| Lauv | 17      | 1         | 605        |      | 623    |
| Sum: | 28      | 17 049    | 25 520     | 445  | 43 042 |

Volum (kbm)



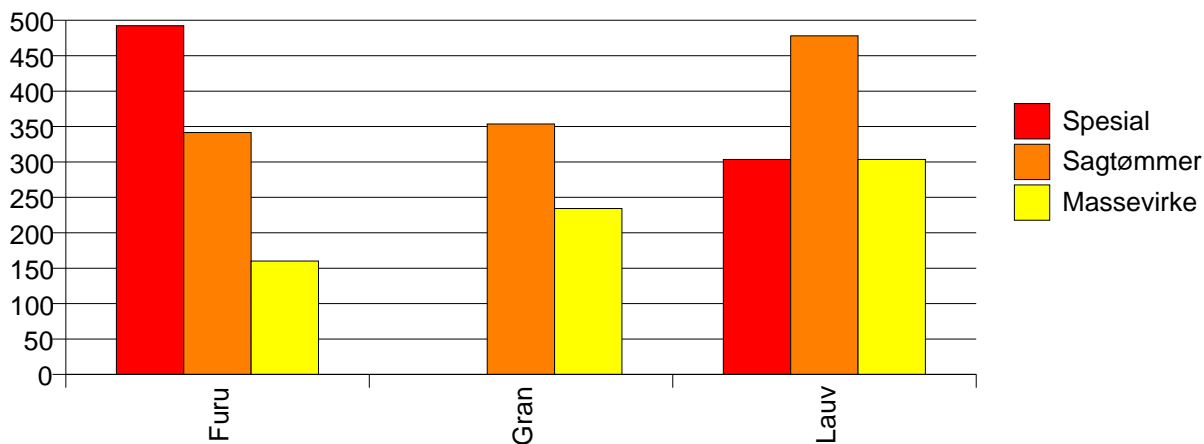
Volum (prosentfordelt)



### Gjennomsnittspris 2003 (kr/kbm)

|       | Spesial | Sagtømmer | Massevirke | Vrak | Snitt |
|-------|---------|-----------|------------|------|-------|
| Furu  | 492     | 342       | 160        | 0    | 258   |
| Gran  |         | 354       | 234        | 0    | 276   |
| Lauv  | 304     | 478       | 304        |      | 304   |
| Snitt | 378     | 351       | 226        | 0    | 273   |

Gjennomsnittspris (kr/kbm)



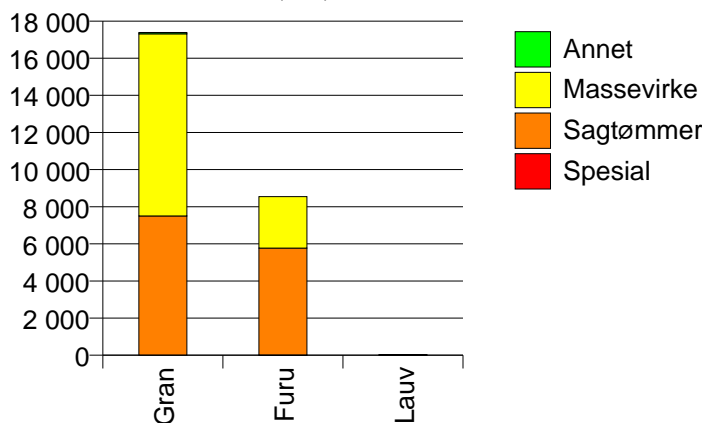


## 617 GOL

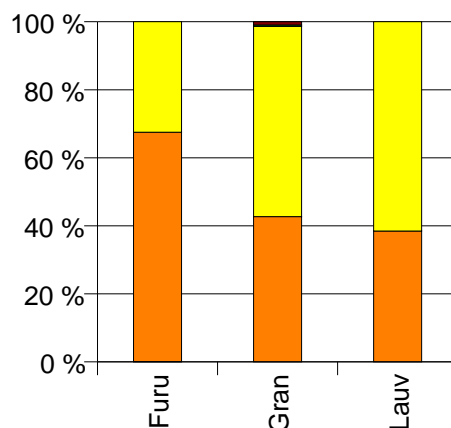
### Volum 2003 (kbm)

|      | Spesial | Sagtømmer | Massevirke | Annet | Vrak | Sum:   |
|------|---------|-----------|------------|-------|------|--------|
| Furu | 9       | 5 761     | 2 773      |       |      | 8 543  |
| Gran |         | 7 501     | 9 816      | 70    | 169  | 17 556 |
| Lauv |         | 10        | 16         |       |      | 26     |
| Sum: | 9       | 13 272    | 12 605     | 70    | 169  | 26 125 |

Volum (kbm)



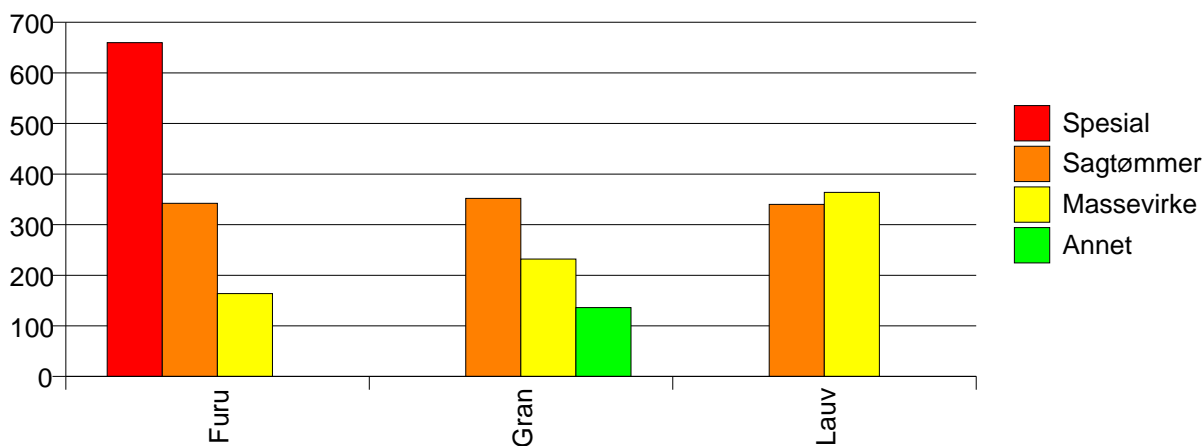
Volum (prosentfordelt)



### Gjennomsnittspris 2003 (kr/kbm)

|       | Spesial | Sagtømmer | Massevirke | Annet | Vrak | Snitt |
|-------|---------|-----------|------------|-------|------|-------|
| Furu  | 660     | 342       | 164        |       |      | 285   |
| Gran  |         | 352       | 232        | 136   | 0    | 281   |
| Lauv  |         | 340       | 364        |       |      | 355   |
| Snitt | 660     | 348       | 217        | 136   | 0    | 282   |

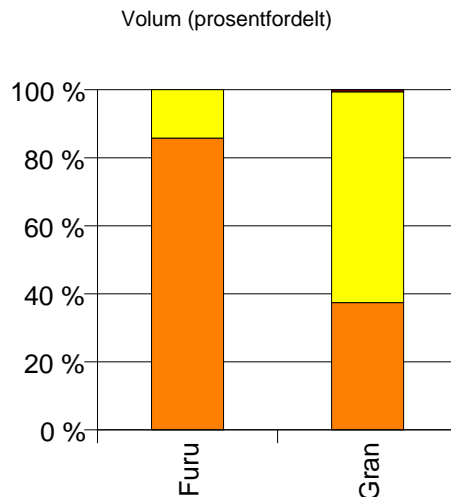
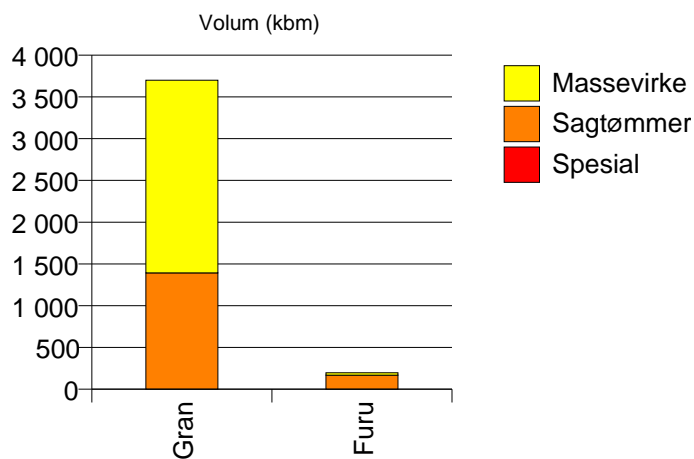
Gjennomsnittspris (kr/kbm)



## 618 HEMSEDAL

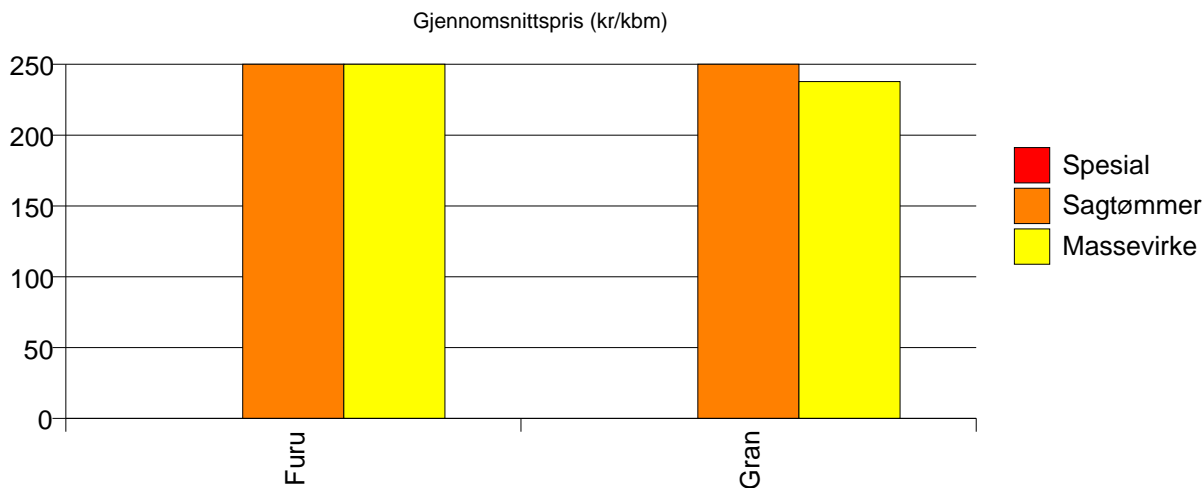
### Volum 2003 (kbm)

|      | Spesial | Sagtømmer | Massevirke | Vrak | Sum:  |
|------|---------|-----------|------------|------|-------|
| Furu | 0       | 169       | 28         |      | 197   |
| Gran |         | 1 392     | 2 307      | 22   | 3 721 |
| Sum: | 0       | 1 561     | 2 335      | 22   | 3 918 |



### Gjennomsnittspris 2003 (kr/kbm)

|       | Spesial | Sagtømmer | Massevirke | Vrak | Snitt |
|-------|---------|-----------|------------|------|-------|
| Furu  | #DIV/0  | 373       | 293        |      | 362   |
| Gran  |         | 353       | 238        | 0    | 279   |
| Snitt | #DIV/0  | 355       | 239        | 0    | 284   |

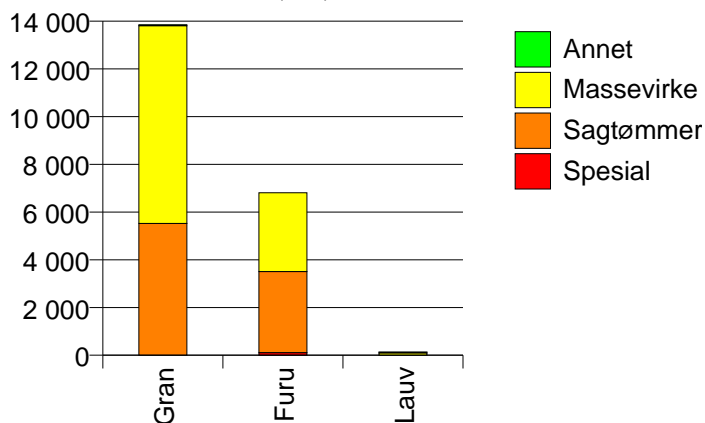


# 619 ÅL

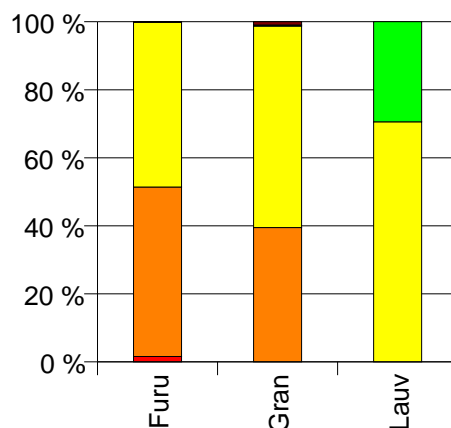
## Volum 2003 (kbm)

|      | Spesial | Sagtømmer | Massevirke | Annet | Vrak | Sum:   |
|------|---------|-----------|------------|-------|------|--------|
| Furu | 109     | 3 395     | 3 305      |       | 9    | 6 818  |
| Gran |         | 5 521     | 8 288      | 40    | 137  | 13 986 |
| Lauv |         |           | 96         | 40    |      | 136    |
| Sum: | 109     | 8 916     | 11 689     | 80    | 146  | 20 940 |

Volum (kbm)



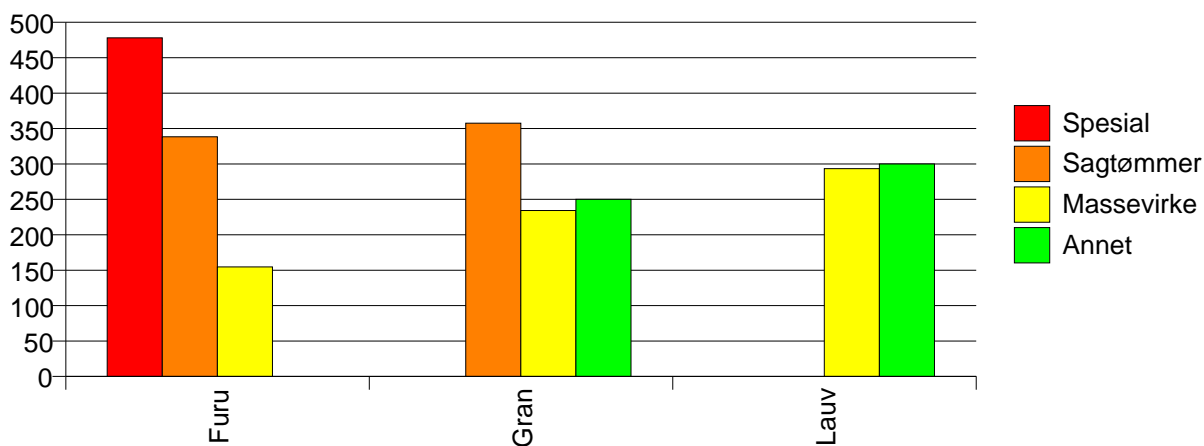
Volum (prosentfordelt)



## Gjennomsnittspris 2003 (kr/kbm)

|       | Spesial | Sagtømmer | Massevirke | Annet | Vrak | Snitt |
|-------|---------|-----------|------------|-------|------|-------|
| Furu  | 478     | 338       | 155        |       | 0    | 251   |
| Gran  |         | 358       | 234        | 250   | 0    | 281   |
| Lauv  |         |           | 293        | 300   |      | 295   |
| Snitt | 478     | 350       | 212        | 275   | 0    | 271   |

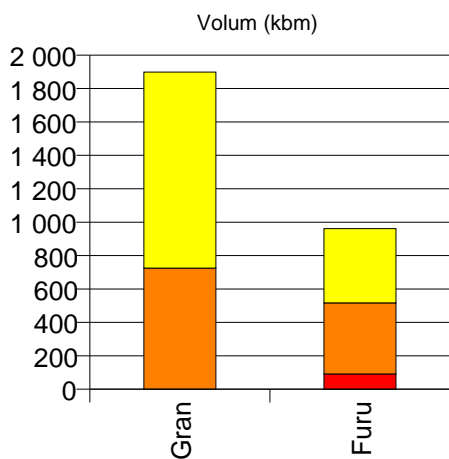
Gjennomsnittspris (kr/kbm)



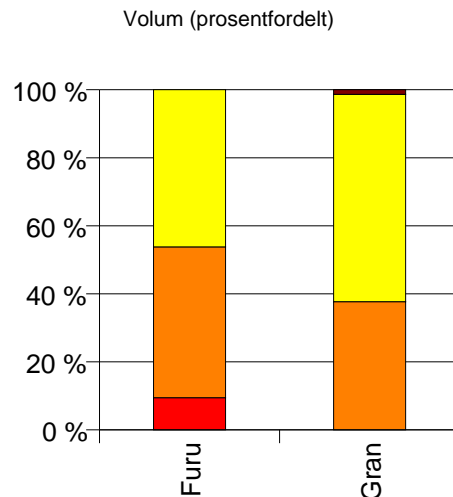
## 620 HOL

### Volum 2003 (kbm)

|      | Spesial | Sagtømmer | Massevirke | Vrak | Sum:  |
|------|---------|-----------|------------|------|-------|
| Furu | 91      | 426       | 444        |      | 961   |
| Gran |         | 725       | 1 173      | 26   | 1 924 |
| Sum: | 91      | 1 151     | 1 617      | 26   | 2 885 |

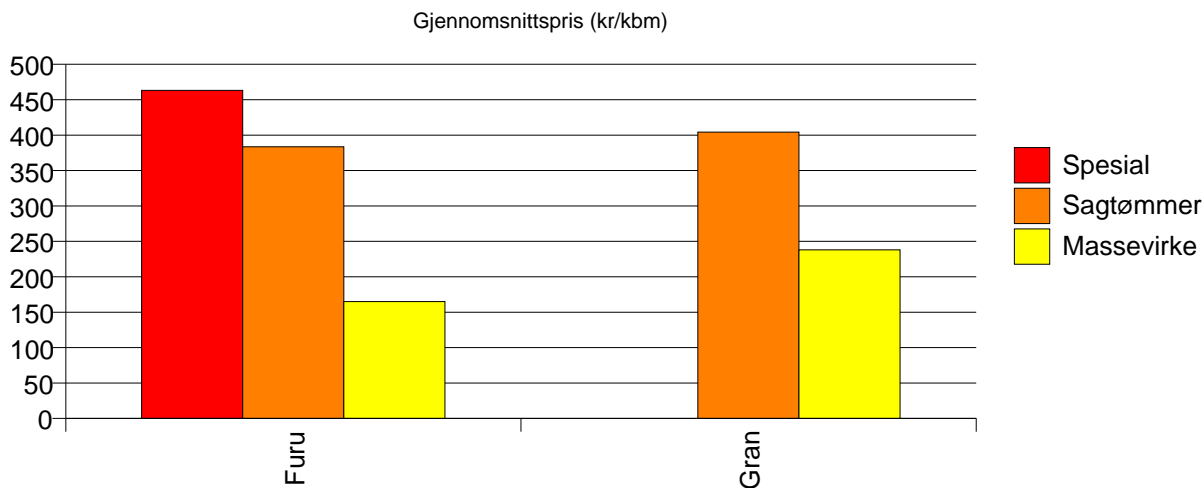


■ Massevirke  
■ Sagtømmer  
■ Spesial



### Gjennomsnittspris 2003 (kr/kbm)

|       | Spesial | Sagtømmer | Massevirke | Vrak | Snitt |
|-------|---------|-----------|------------|------|-------|
| Furu  | 463     | 383       | 165        |      | 290   |
| Gran  |         | 404       | 238        | 0    | 297   |
| Snitt | 463     | 397       | 218        | 0    | 295   |

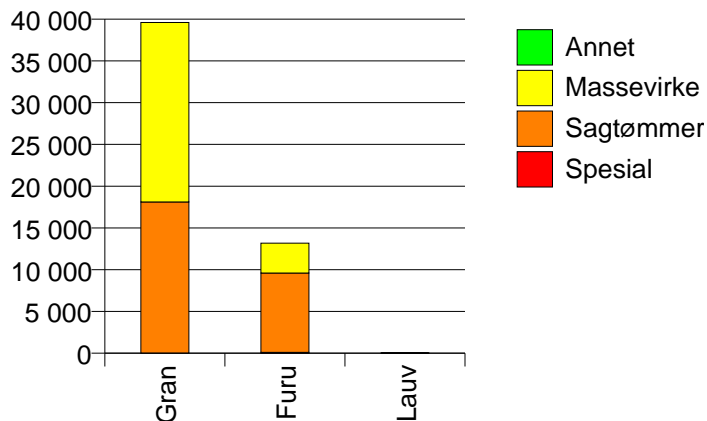


## 621 SIGDAL

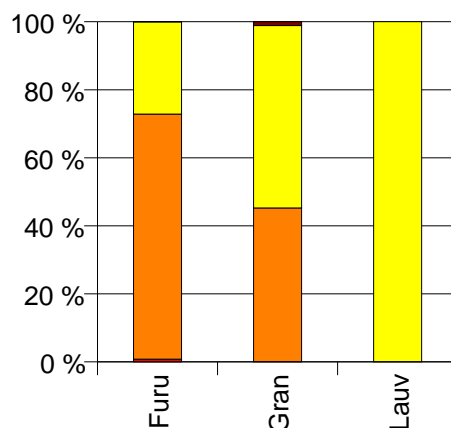
Volum 2003 (kbm)

|      | Spesial | Sagtømmer | Massevirke | Annet | Vrak | Sum:   |
|------|---------|-----------|------------|-------|------|--------|
| Furu | 105     | 9 491     | 3 574      | 1     |      | 13 171 |
| Gran | 4       | 18 109    | 21 473     |       | 446  | 40 032 |
| Lauv | 0       | 0         | 34         |       |      | 34     |
| Sum: | 109     | 27 600    | 25 081     | 1     | 446  | 53 237 |

Volum (kbm)



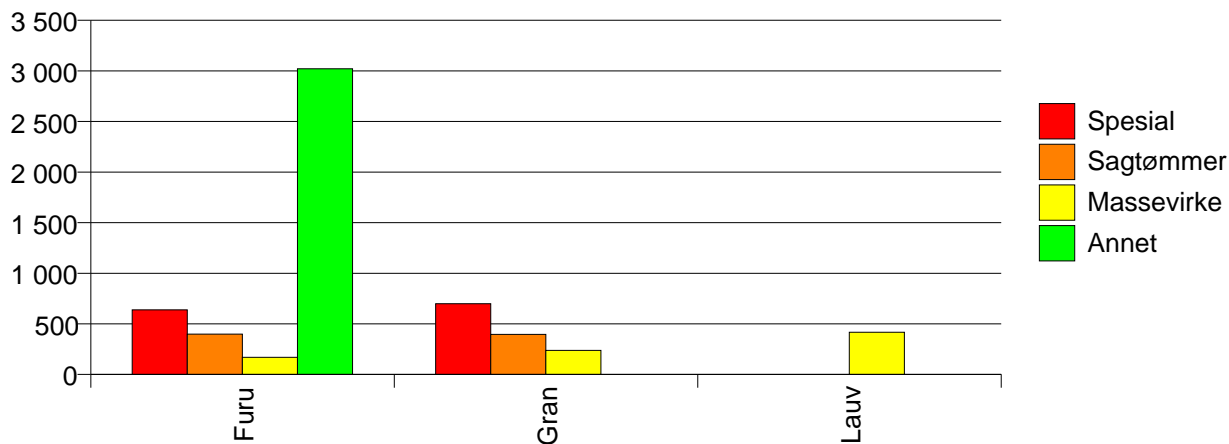
Volum (prosentfordelt)



Gjennomsnittspris 2003 (kr/kbm)

|       | Spesial | Sagtømmer | Massevirke | Annet | Vrak | Snitt |
|-------|---------|-----------|------------|-------|------|-------|
| Furu  | 638     | 399       | 169        | 3 021 |      | 339   |
| Gran  | 699     | 396       | 238        |       | 0    | 307   |
| Lauv  | #DIV/0  | #DIV/0    | 418        |       |      | 425   |
| Snitt | 641     | 397       | 229        | 3 021 | 0    | 315   |

Gjennomsnittspris (kr/kbm)

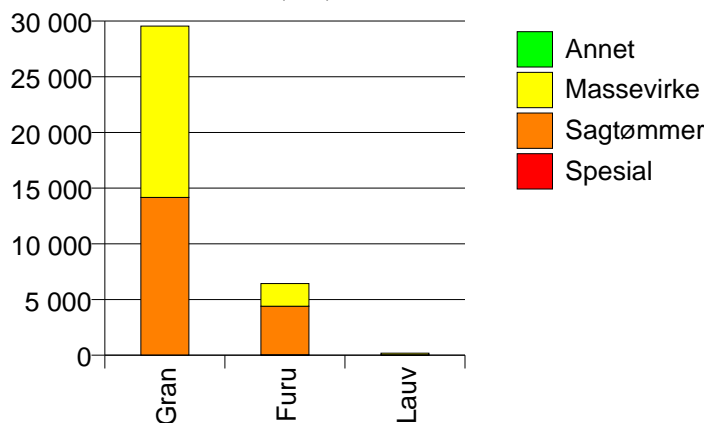


## 622 KRØDSHERAD

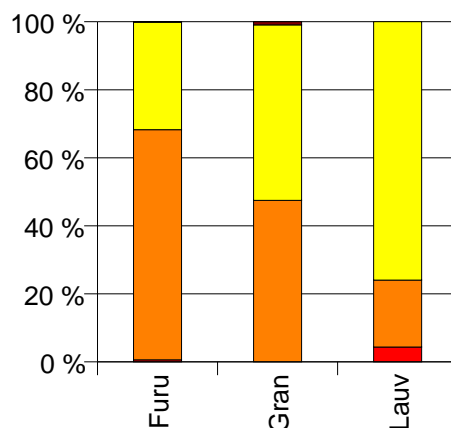
Volum 2003 (kbm)

|      | Spesial | Sagtømmer | Massevirke | Annet | Vrak | Sum:   |
|------|---------|-----------|------------|-------|------|--------|
| Furu | 40      | 4 358     | 2 039      | 3     | 2    | 6 442  |
| Gran | 0       | 14 164    | 15 387     |       | 269  | 29 820 |
| Lauv | 8       | 36        | 139        |       |      | 183    |
| Sum: | 48      | 18 558    | 17 565     | 3     | 271  | 36 445 |

Volum (kbm)



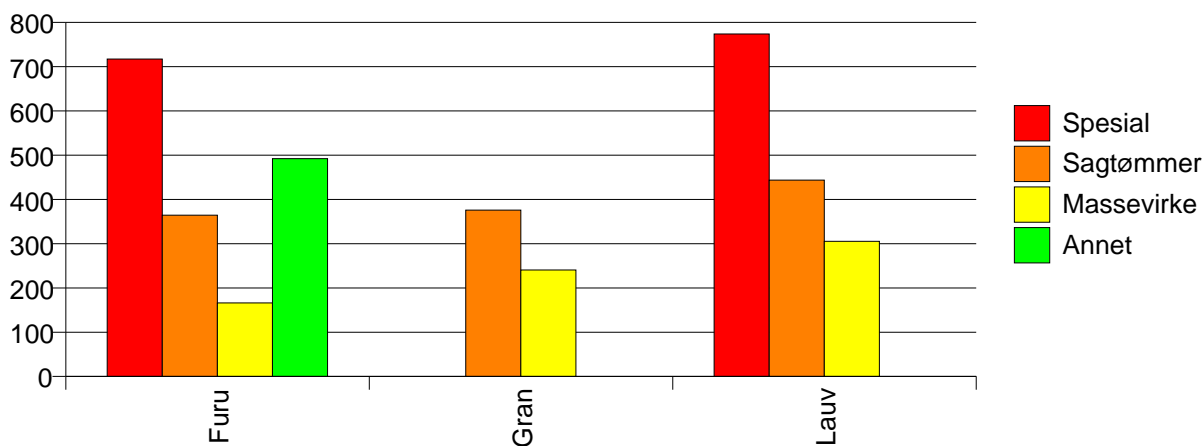
Volum (prosentfordelt)



Gjennomsnittspris 2003 (kr/kbm)

|       | Spesial | Sagtømmer | Massevirke | Annet | Vrak | Snitt |
|-------|---------|-----------|------------|-------|------|-------|
| Furu  | 717     | 364       | 166        | 492   | 0    | 304   |
| Gran  | #DIV/0  | 376       | 240        |       | 0    | 303   |
| Lauv  | 774     | 444       | 305        |       |      | 353   |
| Snitt | 727     | 373       | 232        | 492   | 0    | 303   |

Gjennomsnittspris (kr/kbm)

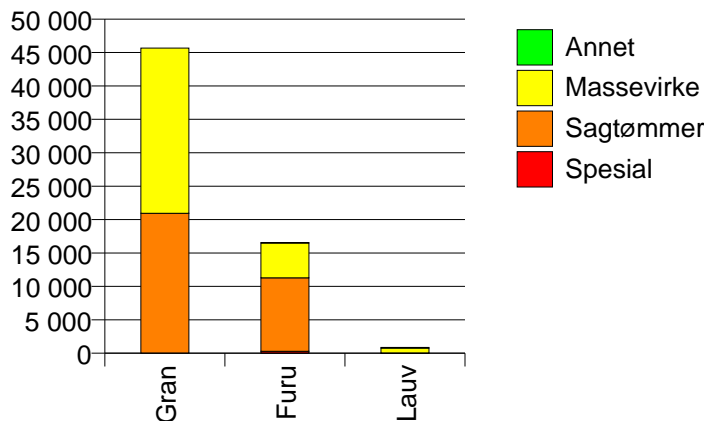


## 623 MODUM

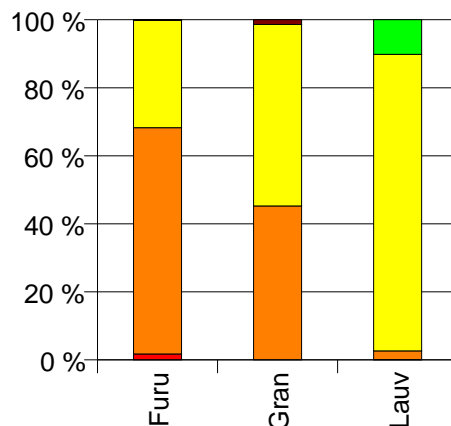
Volum 2003 (kbm)

|      | Spesial | Sagtømmer | Massevirke | Annet | Vrak | Sum:   |
|------|---------|-----------|------------|-------|------|--------|
| Furu | 288     | 11 002    | 5 230      | 7     | 13   | 16 540 |
| Gran | 6       | 20 943    | 24 708     |       | 636  | 46 293 |
| Lauv | 1       | 22        | 754        | 88    |      | 865    |
| Sum: | 295     | 31 967    | 30 692     | 95    | 649  | 63 698 |

Volum (kbm)



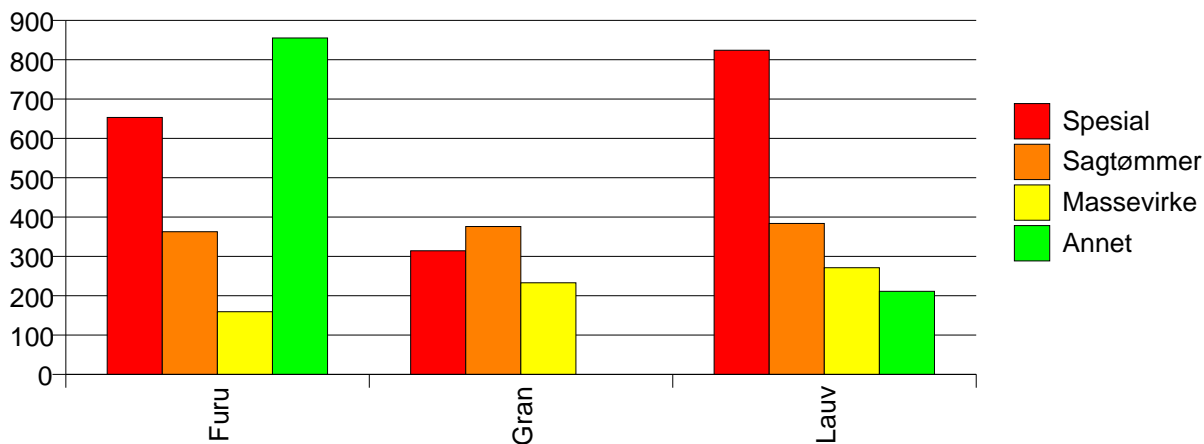
Volum (prosentfordelt)



Gjennomsnittspris 2003 (kr/kbm)

|       | Spesial | Sagtømmer | Massevirke | Annet | Vrak | Snitt |
|-------|---------|-----------|------------|-------|------|-------|
| Furu  | 653     | 363       | 159        | 855   | 0    | 303   |
| Gran  | 314     | 376       | 233        |       | 0    | 294   |
| Lauv  | 824     | 384       | 271        | 211   |      | 269   |
| Snitt | 647     | 371       | 221        | 259   | 0    | 296   |

Gjennomsnittspris (kr/kbm)

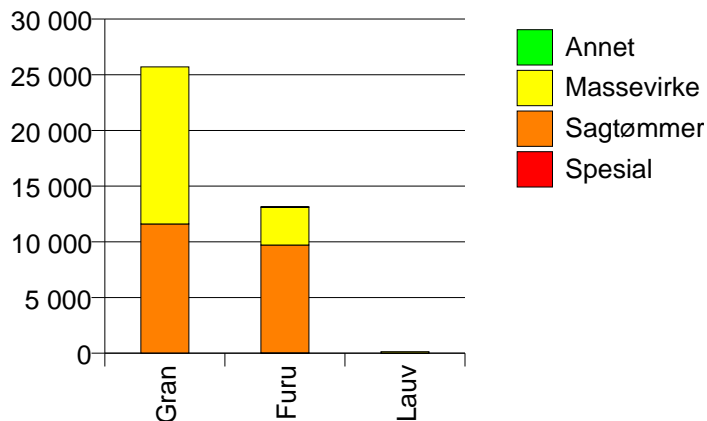


## 624 ØVRE EIKER

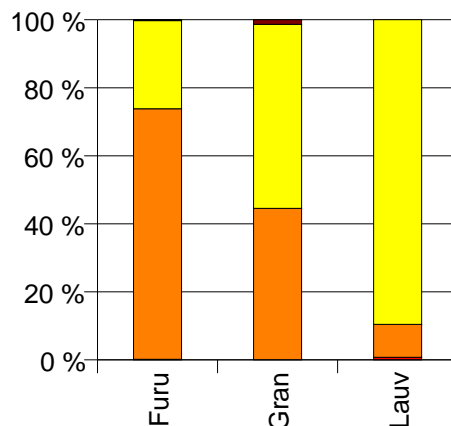
Volum 2003 (kbm)

|      | Spesial | Sagtømmer | Massevirke | Annet | Vrak | Sum:   |
|------|---------|-----------|------------|-------|------|--------|
| Furu | 25      | 9 685     | 3 405      | 27    | 8    | 13 150 |
| Gran |         | 11 611    | 14 093     |       | 355  | 26 059 |
| Lauv | 1       | 13        | 120        | 0     |      | 134    |
| Sum: | 26      | 21 309    | 17 618     | 27    | 363  | 39 343 |

Volum (kbm)



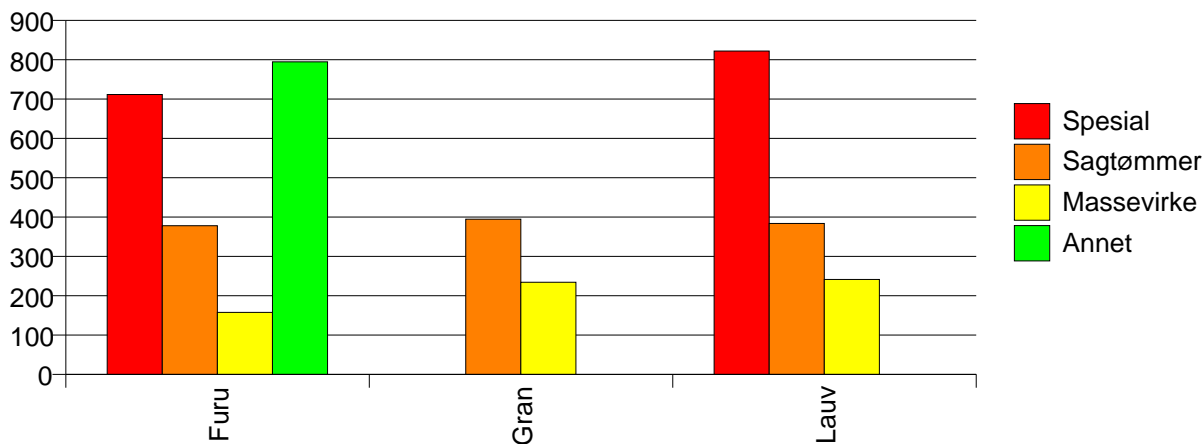
Volum (prosentfordelt)



Gjennomsnittspris 2003 (kr/kbm)

|       | Spesial | Sagtømmer | Massevirke | Annet  | Vrak | Snitt |
|-------|---------|-----------|------------|--------|------|-------|
| Furu  | 711     | 378       | 158        | 794    | 0    | 322   |
| Gran  |         | 395       | 234        |        | 0    | 303   |
| Lauv  | 822     | 384       | 241        | #DIV/0 |      | 261   |
| Snitt | 716     | 387       | 220        | 804    | 0    | 309   |

Gjennomsnittspris (kr/kbm)



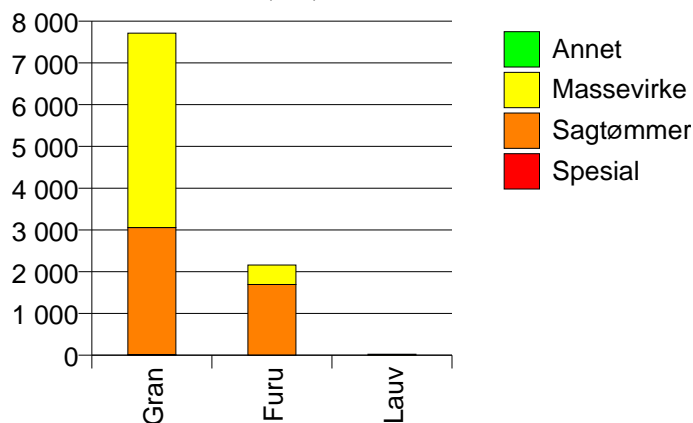


## 625 NEDRE EIKER

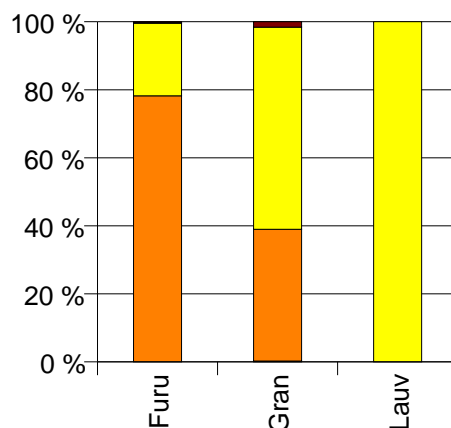
Volum 2003 (kbm)

|      | Spesial | Sagtømmer | Massevirke | Annet | Vrak | Sum:   |
|------|---------|-----------|------------|-------|------|--------|
| Furu |         | 1 695     | 464        | 2     | 6    | 2 167  |
| Gran | 19      | 3 037     | 4 655      |       | 125  | 7 836  |
| Lauv |         |           | 25         |       |      | 25     |
| Sum: | 19      | 4 732     | 5 144      | 2     | 131  | 10 028 |

Volum (kbm)



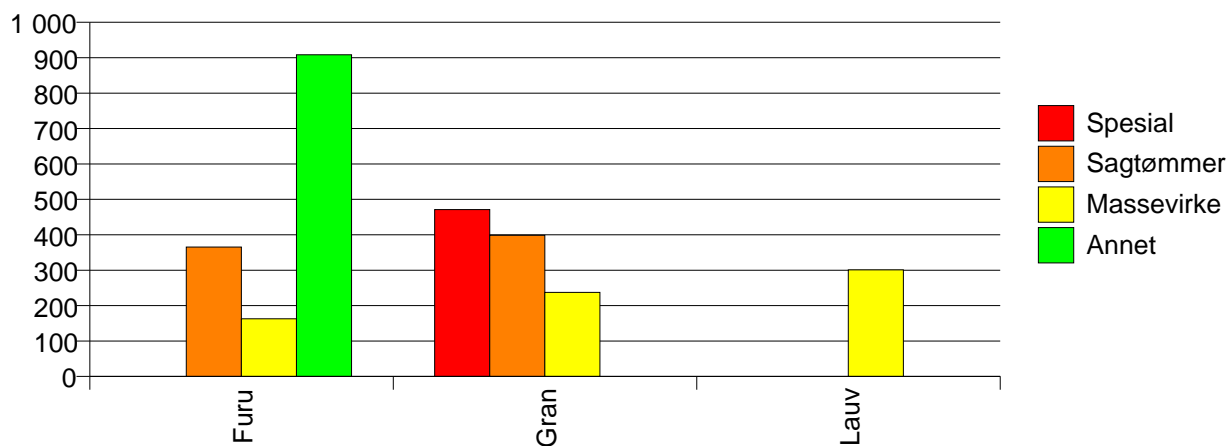
Volum (prosentfordelt)



Gjennomsnittspris 2003 (kr/kbm)

|       | Spesial | Sagtømmer | Massevirke | Annet | Vrak | Snitt |
|-------|---------|-----------|------------|-------|------|-------|
| Furu  |         | 366       | 163        | 909   | 0    | 322   |
| Gran  | 471     | 398       | 237        |       | 0    | 296   |
| Lauv  |         |           | 301        |       |      | 301   |
| Snitt | 471     | 387       | 231        | 909   | 0    | 302   |

Gjennomsnittspris (kr/kbm)

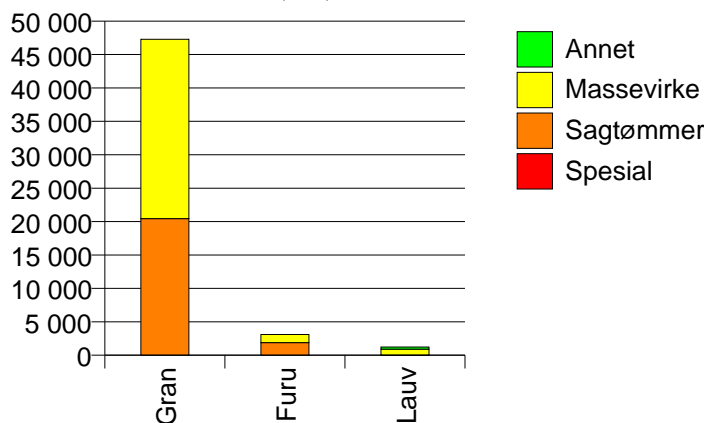


## 626 LIER

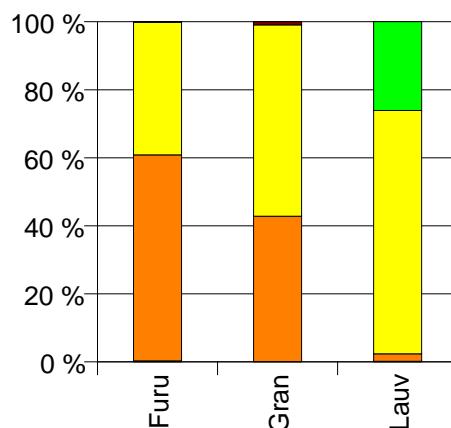
Volum 2003 (kbm)

|      | Spesial | Sagtømmer | Massevirke | Annet | Vrak | Sum:   |
|------|---------|-----------|------------|-------|------|--------|
| Furu | 9       | 1 879     | 1 213      | 1     | 1    | 3 103  |
| Gran |         | 20 435    | 26 844     |       | 431  | 47 710 |
| Lauv | 2       | 27        | 877        | 320   |      | 1 226  |
| Sum: | 11      | 22 341    | 28 934     | 321   | 432  | 52 039 |

Volum (kbm)



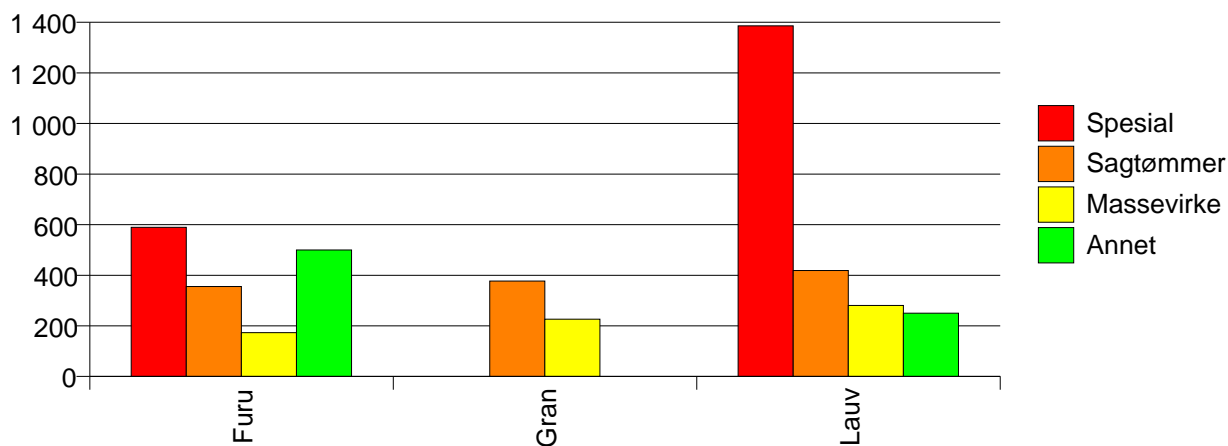
Volum (prosentfordelt)



Gjennomsnittspris 2003 (kr/kbm)

|       | Spesial | Sagtømmer | Massevirke | Annet | Vrak | Snitt |
|-------|---------|-----------|------------|-------|------|-------|
| Furu  | 590     | 356       | 173        | 500   | 0    | 285   |
| Gran  |         | 377       | 226        |       | 0    | 289   |
| Lauv  | 1 386   | 419       | 280        | 250   |      | 277   |
| Snitt | 734     | 375       | 226        | 251   | 0    | 288   |

Gjennomsnittspris (kr/kbm)

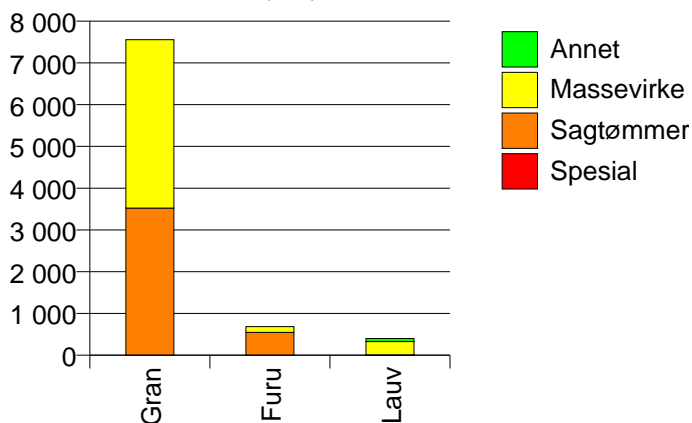


## 627 RØYKEN

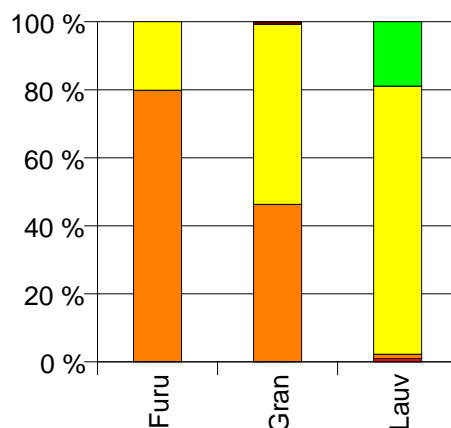
Volum 2003 (kbm)

|      | Spesial | Sagtømmer | Massevirke | Annet | Vrak | Sum:  |
|------|---------|-----------|------------|-------|------|-------|
| Furu |         | 548       | 138        |       |      | 686   |
| Gran |         | 3 524     | 4 032      |       | 55   | 7 611 |
| Lauv | 4       | 5         | 317        | 76    |      | 402   |
| Sum: | 4       | 4 077     | 4 487      | 76    | 55   | 8 699 |

Volum (kbm)



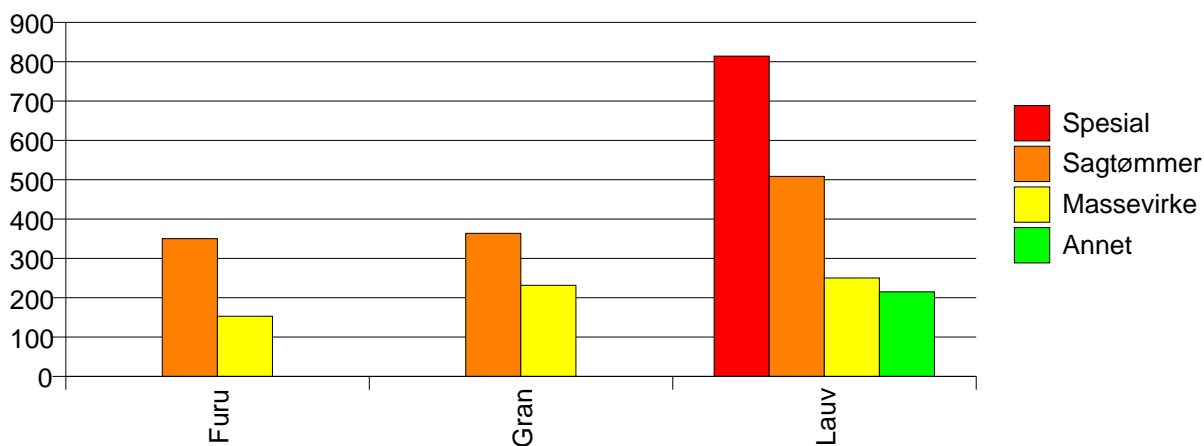
Volum (prosentfordelt)



Gjennomsnittspris 2003 (kr/kbm)

|       | Spesial | Sagtømmer | Massevirke | Annet | Vrak | Snitt |
|-------|---------|-----------|------------|-------|------|-------|
| Furu  |         | 350       | 153        |       |      | 311   |
| Gran  |         | 364       | 232        |       | 0    | 291   |
| Lauv  | 814     | 508       | 250        | 215   |      | 252   |
| Snitt | 814     | 362       | 231        | 215   | 0    | 291   |

Gjennomsnittspris (kr/kbm)

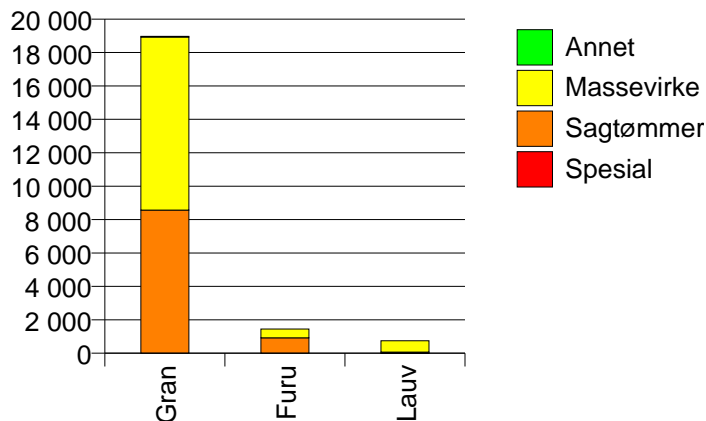


## 628 HURUM

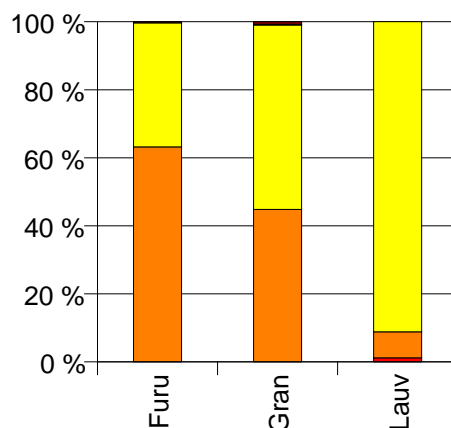
Volum 2003 (kbm)

|      | Spesial | Sagtømmer | Massevirke | Annet | Vrak | Sum:   |
|------|---------|-----------|------------|-------|------|--------|
| Furu |         | 921       | 531        |       | 5    | 1 457  |
| Gran |         | 8 566     | 10 362     | 39    | 143  | 19 110 |
| Lauv | 9       | 57        | 681        |       |      | 747    |
| Sum: | 9       | 9 544     | 11 574     | 39    | 148  | 21 314 |

Volum (kbm)



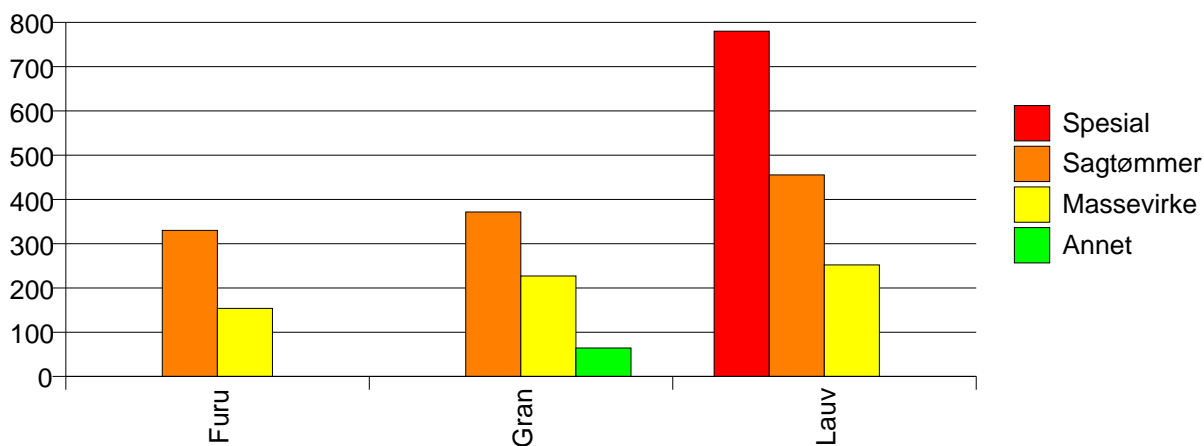
Volum (prosentfordelt)



Gjennomsnittspris 2003 (kr/kbm)

|       | Spesial | Sagtømmer | Massevirke | Annet | Vrak | Snitt |
|-------|---------|-----------|------------|-------|------|-------|
| Furu  |         | 330       | 154        |       | 0    | 265   |
| Gran  |         | 372       | 227        | 64    | 0    | 290   |
| Lauv  | 780     | 455       | 252        |       |      | 274   |
| Snitt | 780     | 368       | 225        | 64    | 0    | 287   |

Gjennomsnittspris (kr/kbm)

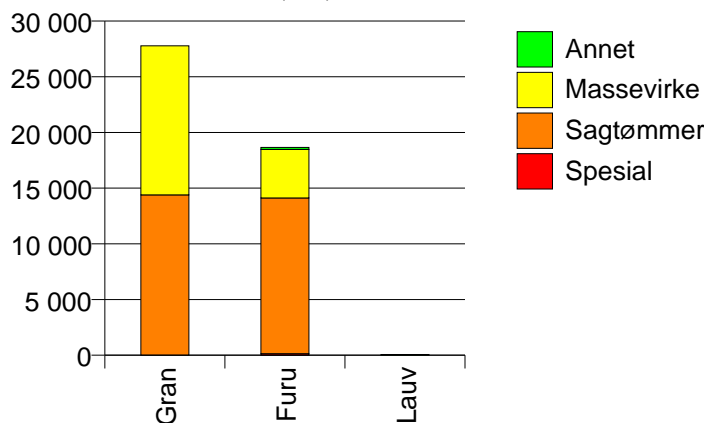


## 631 FLESBERG

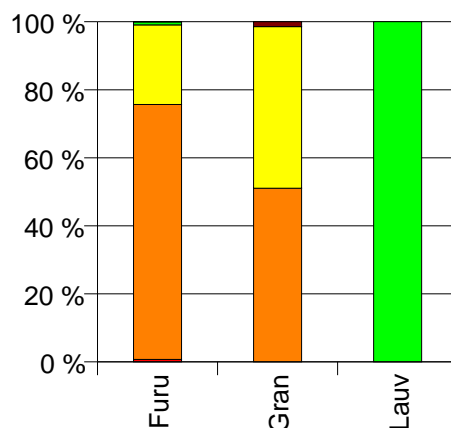
Volum 2003 (kbm)

|      | Spesial | Sagtømmer | Massevirke | Annet | Vrak | Sum:   |
|------|---------|-----------|------------|-------|------|--------|
| Furu | 134     | 13 985    | 4 364      | 169   | 5    | 18 657 |
| Gran | 1       | 14 392    | 13 392     |       | 404  | 28 189 |
| Lauv |         | 0         |            | 62    |      | 62     |
| Sum: | 135     | 28 377    | 17 756     | 231   | 409  | 46 908 |

Volum (kbm)



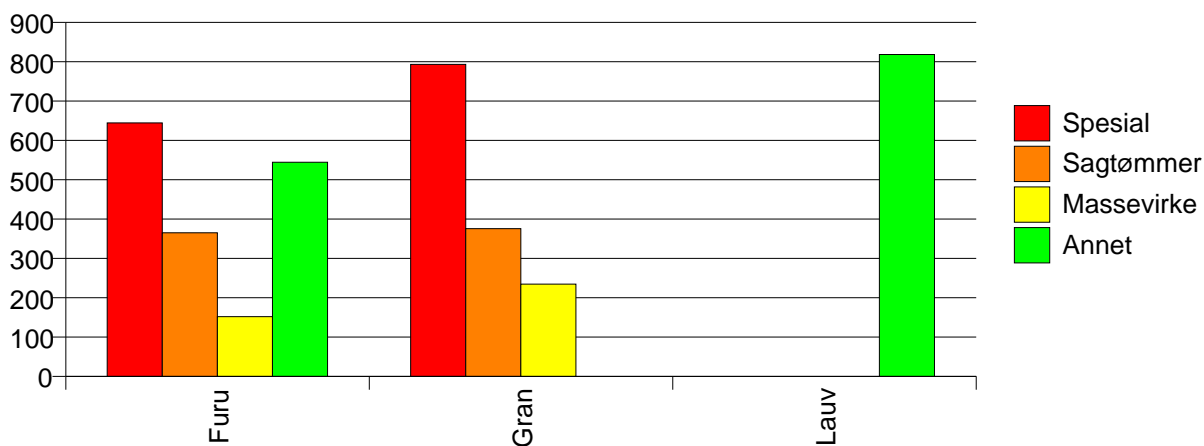
Volum (prosentfordelt)



Gjennomsnittspris 2003 (kr/kbm)

|       | Spesial | Sagtømmer | Massevirke | Annet | Vrak | Snitt |
|-------|---------|-----------|------------|-------|------|-------|
| Furu  | 644     | 365       | 152        | 544   | 0    | 319   |
| Gran  | 793     | 375       | 235        |       | 0    | 303   |
| Lauv  |         | #DIV/0    |            | 818   |      | 818   |
| Snitt | 645     | 370       | 214        | 618   | 0    | 310   |

Gjennomsnittspris (kr/kbm)

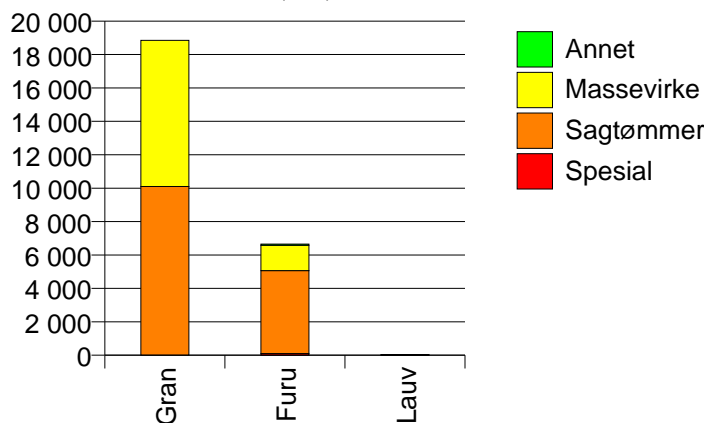


## 632 ROLLAG

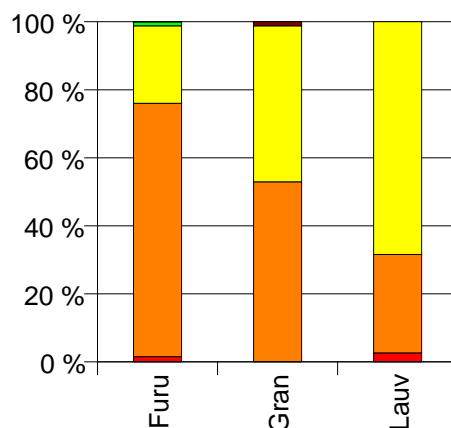
Volum 2003 (kbm)

|      | Spesial | Sagtømmer | Massevirke | Annet | Vrak | Sum:   |
|------|---------|-----------|------------|-------|------|--------|
| Furu | 102     | 4 959     | 1 517      | 78    | 2    | 6 658  |
| Gran |         | 10 099    | 8 748      |       | 229  | 19 076 |
| Lauv | 1       | 11        | 26         |       |      | 38     |
| Sum: | 103     | 15 069    | 10 291     | 78    | 231  | 25 772 |

Volum (kbm)



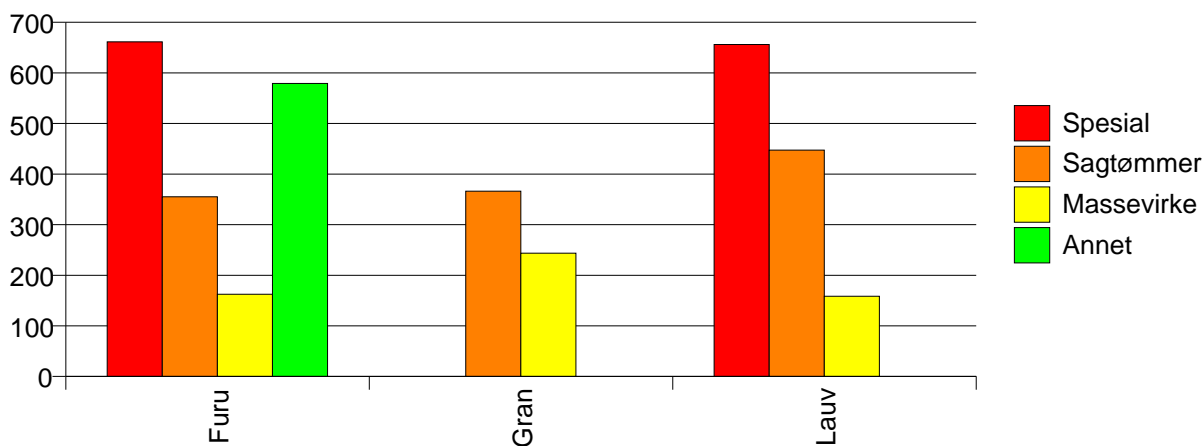
Volum (prosentfordelt)



Gjennomsnittspris 2003 (kr/kbm)

|       | Spesial | Sagtømmer | Massevirke | Annet | Vrak | Snitt |
|-------|---------|-----------|------------|-------|------|-------|
| Furu  | 661     | 355       | 162        | 579   | 0    | 318   |
| Gran  |         | 366       | 244        |       | 0    | 306   |
| Lauv  | 656     | 447       | 158        |       |      | 255   |
| Snitt | 661     | 363       | 231        | 579   | 0    | 309   |

Gjennomsnittspris (kr/kbm)

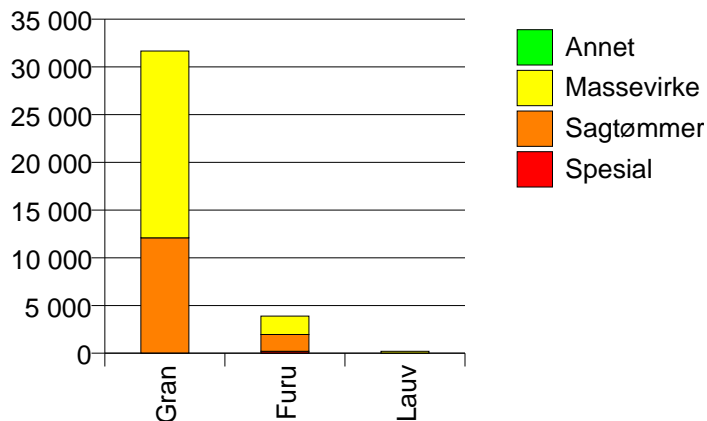


## 633 NORE OG UVDAL

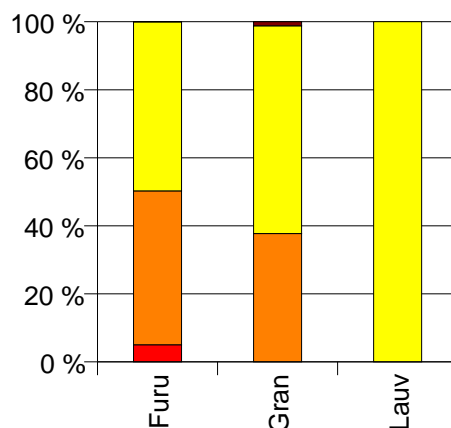
### Volum 2003 (kbm)

|      | Spesial | Sagtømmer | Massevirke | Annet | Vrak | Sum:   |
|------|---------|-----------|------------|-------|------|--------|
| Furu | 196     | 1 761     | 1 935      | 0     | 1    | 3 893  |
| Gran |         | 12 091    | 19 565     |       | 386  | 32 042 |
| Lauv |         |           | 196        |       |      | 196    |
| Sum: | 196     | 13 852    | 21 696     | 0     | 387  | 36 131 |

Volum (kbm)



Volum (prosentfordelt)



### Gjennomsnittspris 2003 (kr/kbm)

|       | Spesial | Sagtømmer | Massevirke | Annet  | Vrak | Snitt |
|-------|---------|-----------|------------|--------|------|-------|
| Furu  | 483     | 341       | 157        | #DIV/0 | 0    | 257   |
| Gran  |         | 362       | 235        |        | 0    | 280   |
| Lauv  |         |           | 307        |        |      | 307   |
| Snitt | 483     | 360       | 228        | #DIV/0 | 0    | 278   |

Gjennomsnittspris (kr/kbm)

