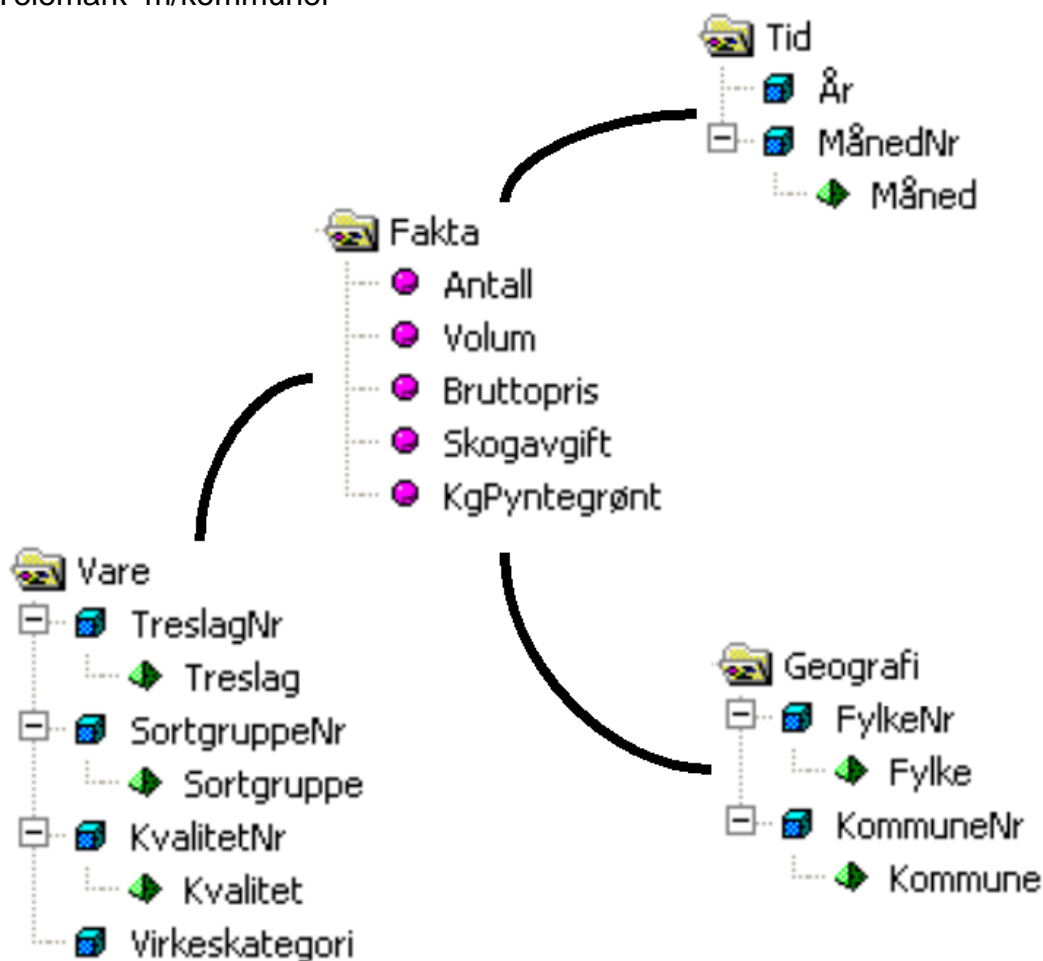




Virkestatistikk fra SKOG-DATA AS

Telemark m/kommuner



Dataene i rapporten er hentet fra databasen som inneholder virkesdata med tilhørende innbetalinger av skogavgift. Rapporten er laget med Business Objects, som er sluttbrukerverktøyet i Skog-Data sine nye datavarehus-løsninger. Business Objects er ett meget sterkt rapportverktøy som kan presentere store mengder data effektivt.

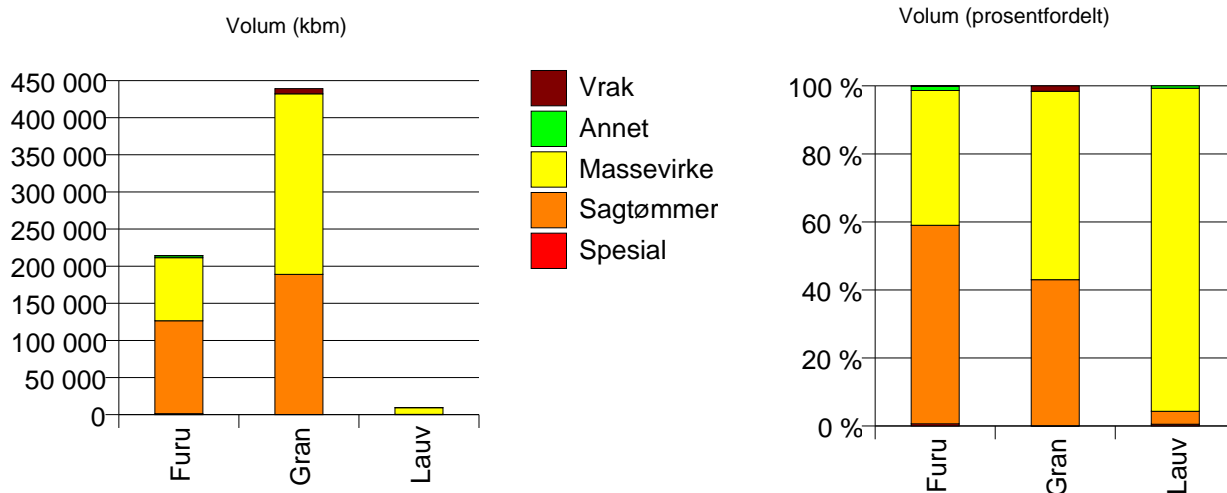
Rapportene kan lastes ned fra www.skogdata.no/statistikk

For mer informasjon, kontakt: alexanderh@skogdata.no

Telemark

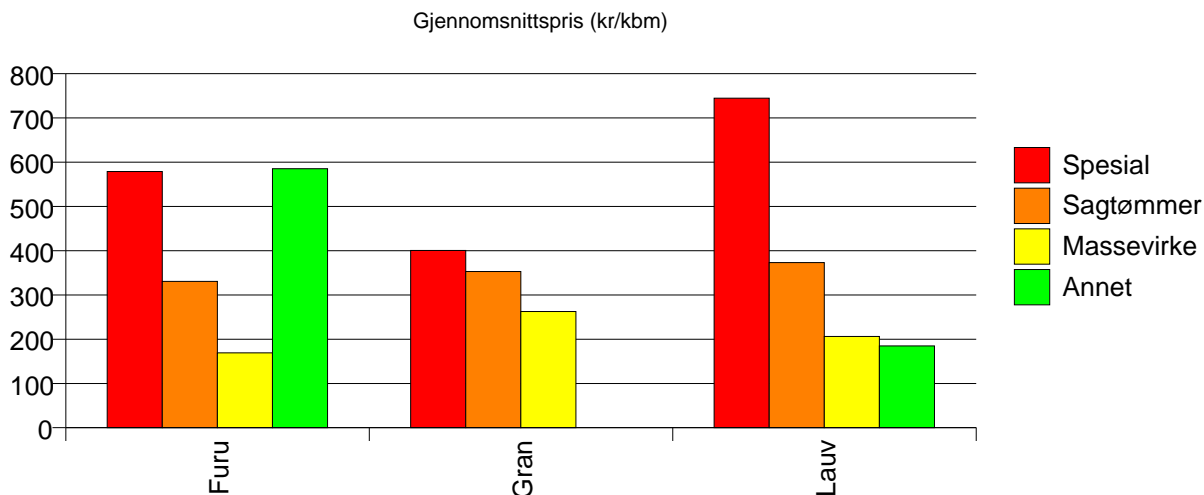
Volum 2002 (kbm)

	Spesial	Sagtømmer	Massevirke	Annet	Vrak	Sum:
Furu	1 345	125 192	84 911	2 775	131	214 354
Gran	210	188 715	243 223		7 010	439 158
Lauv	52	364	9 094	66		9 576
Sum:	1 607	314 271	337 228	2 841	7 141	663 088



Gjennomsnittspris 2002 (kr/kbm)

	Spesial	Sagtømmer	Massevirke	Annet	Vrak	Snitt
Furu	579	331	169	585	0	271
Gran	401	353	263		0	297
Lauv	744	373	206	185		215
Snitt	561	344	238	576	0	288

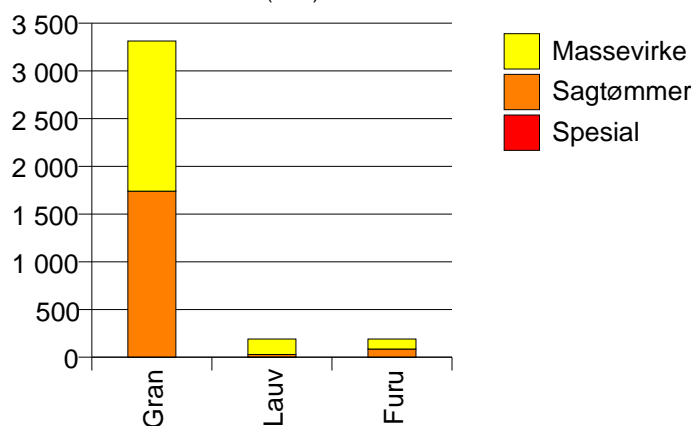


805 PORSGRUNN

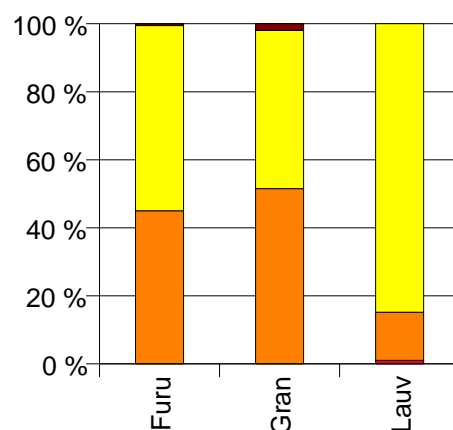
Volum 2002 (kbm)

	Spesial	Sagtømmer	Massevirke	Vrak	Sum:
Furu		86	104	1	191
Gran		1 740	1 572	66	3 378
Lauv	2	27	162		191
Sum:	2	1 853	1 838	67	3 760

Volum (kbm)



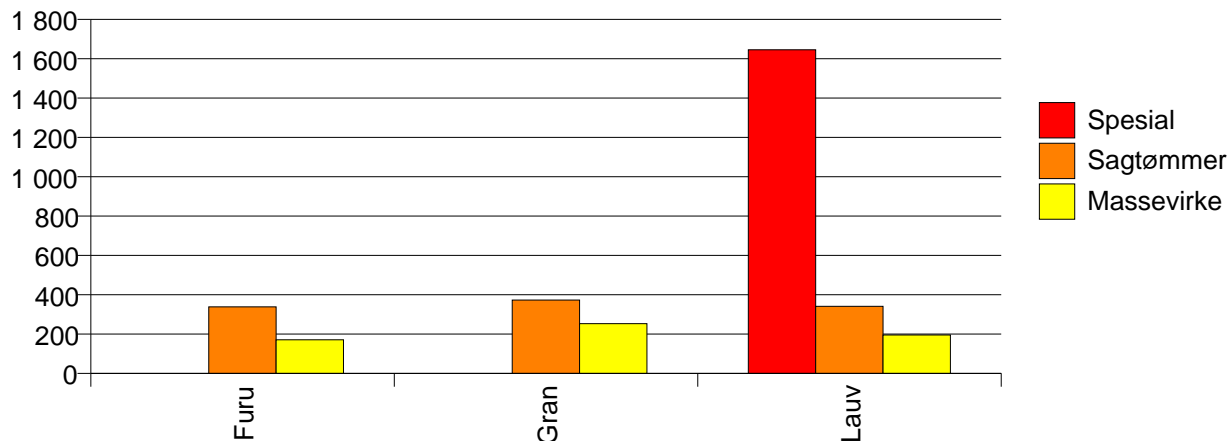
Volum (prosentfordelt)



Gjennomsnittspris 2002 (kr/kbm)

	Spesial	Sagtømmer	Massevirke	Vrak	Snitt
Furu		338	171	0	246
Gran		373	253	0	310
Lauv	1 645	341	196		231
Snitt	1 645	371	244	0	303

Gjennomsnittspris (kr/kbm)

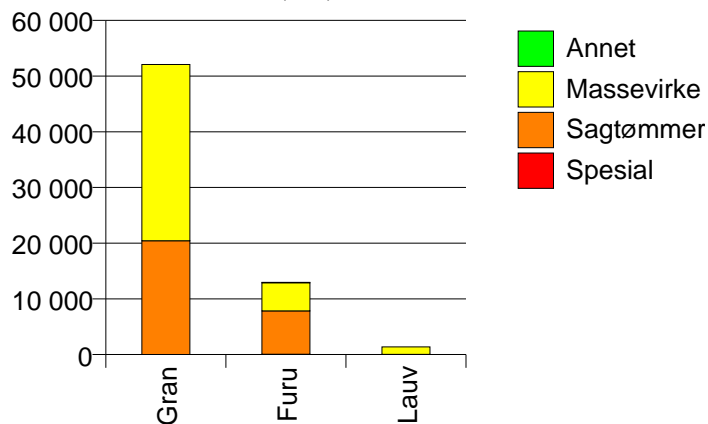


806 SKIEN

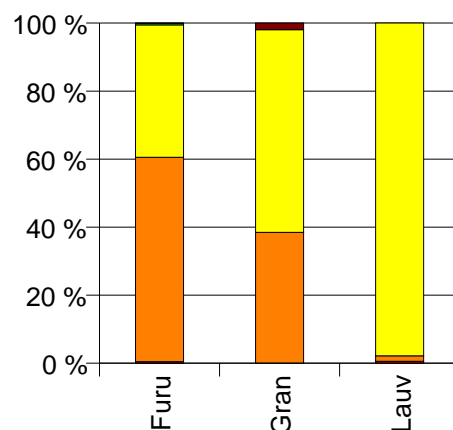
Volum 2002 (kbm)

	Spesial	Sagtømmer	Massevirke	Annet	Vrak	Sum:
Furu	56	7 795	5 042	60	11	12 964
Gran		20 446	31 644		1 031	53 121
Lauv	8	22	1 351			1 381
Sum:	64	28 263	38 037	60	1 042	67 466

Volum (kbm)



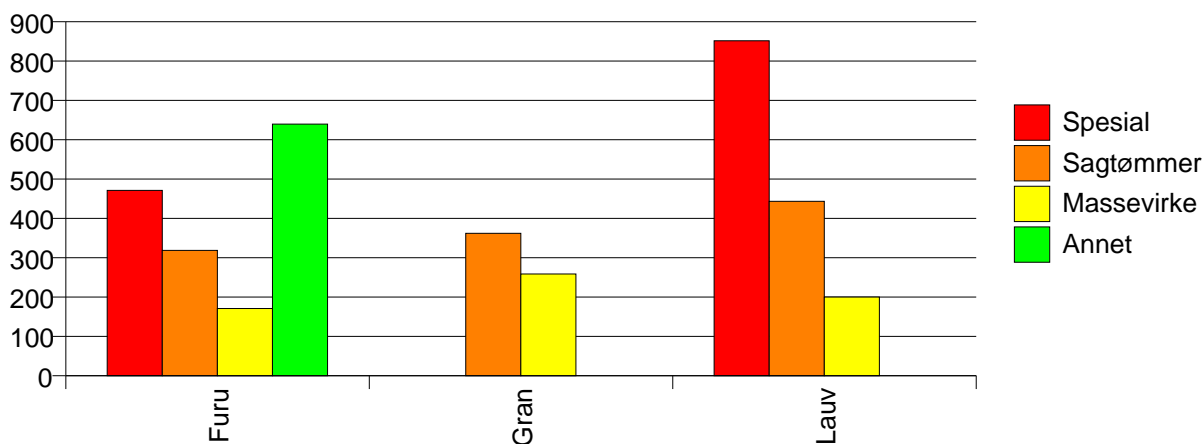
Volum (prosentfordelt)



Gjennomsnittspris 2002 (kr/kbm)

	Spesial	Sagtømmer	Massevirke	Annet	Vrak	Snitt
Furu	471	319	171	640	0	263
Gran		362	259		0	294
Lauv	852	444	200			208
Snitt	519	350	245	640	0	286

Gjennomsnittspris (kr/kbm)

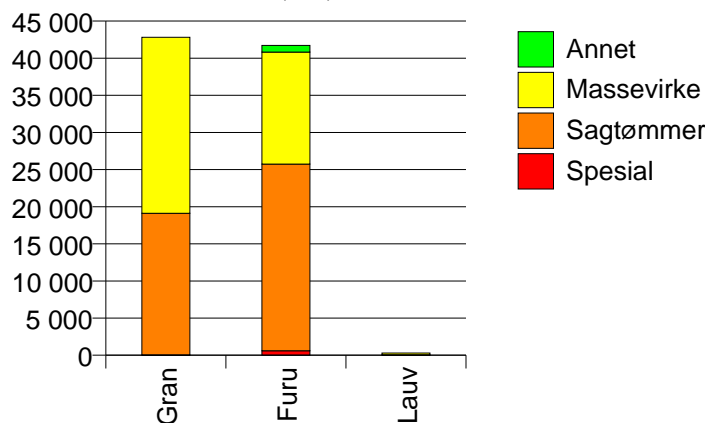


807 NOTODDEN

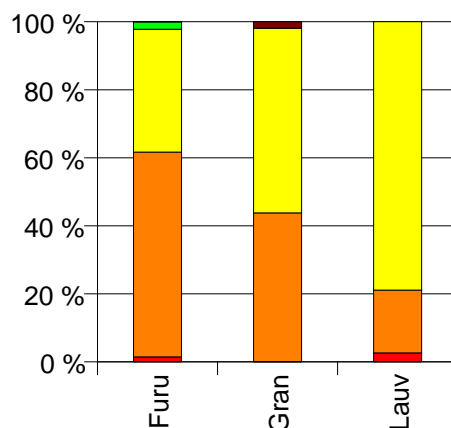
Volum 2002 (kbm)

	Spesial	Sagtømmer	Massevirke	Annet	Vrak	Sum:
Furu	607	25 133	15 079	906	16	41 741
Gran	44	19 079	23 697		837	43 657
Lauv	8	56	239			303
Sum:	659	44 268	39 015	906	853	85 701

Volum (kbm)



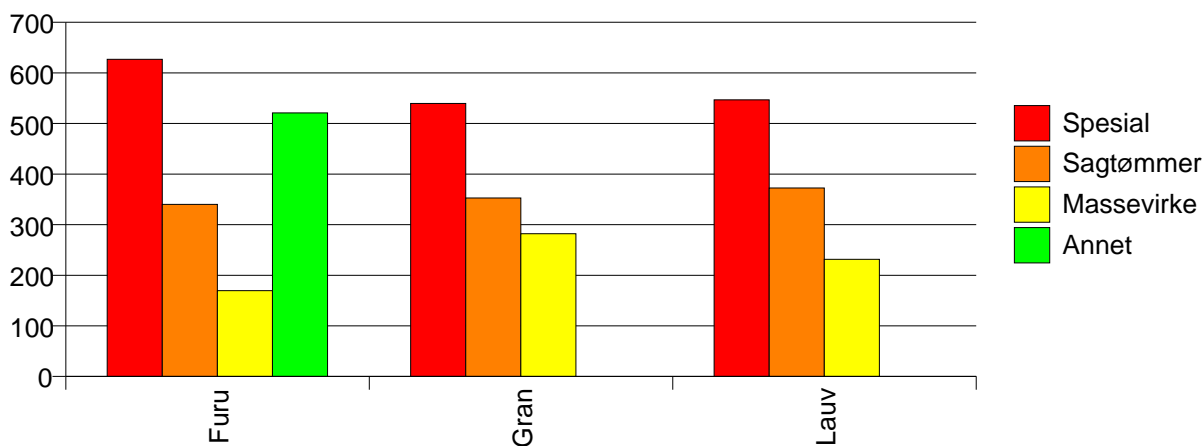
Volum (prosentfordelt)



Gjennomsnittspris 2002 (kr/kbm)

	Spesial	Sagtømmer	Massevirke	Annet	Vrak	Snitt
Furu	627	340	170	521	0	287
Gran	540	353	282		0	308
Lauv	547	373	231			266
Snitt	620	346	238	521	0	297

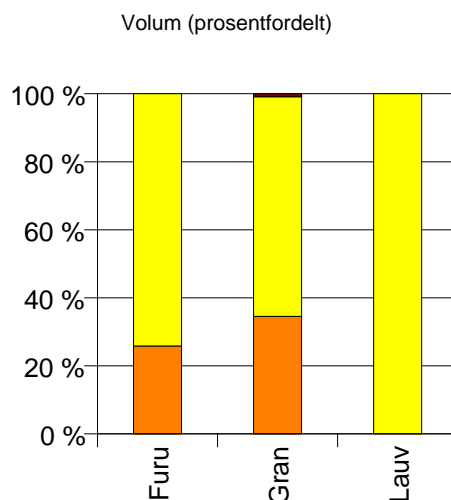
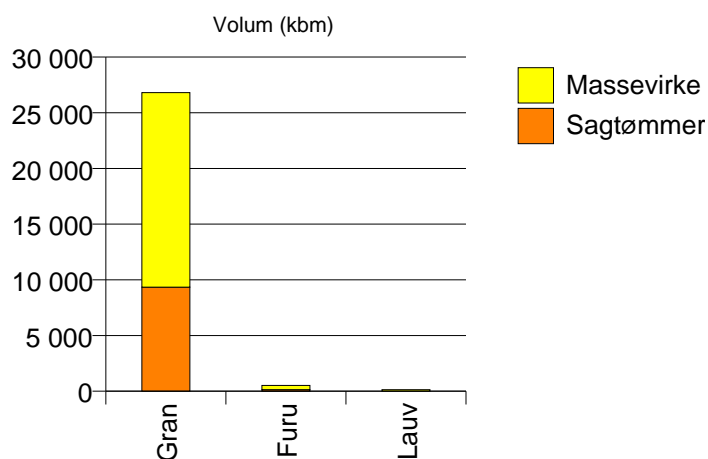
Gjennomsnittspris (kr/kbm)



811 SILJAN

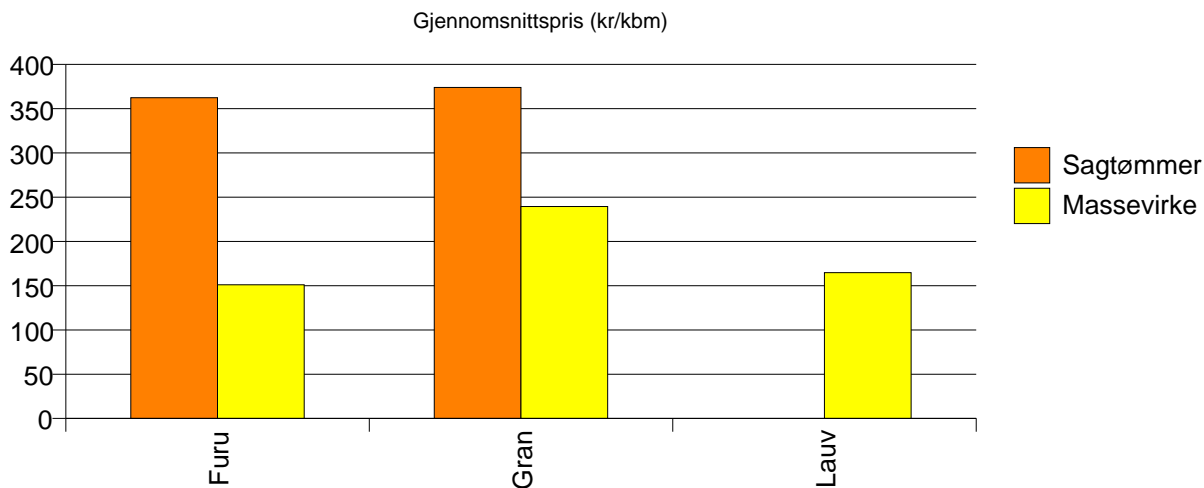
Volum 2002 (kbm)

	Sagtømmer	Massevirke	Vrak	Sum:
Furu	135	387		522
Gran	9 341	17 468	234	27 043
Lauv		133		133
Sum:	9 476	17 988	234	27 698



Gjennomsnittspris 2002 (kr/kbm)

	Sagtømmer	Massevirke	Vrak	Snitt
Furu	362	151		206
Gran	374	239	0	284
Lauv		165		165
Snitt	374	237	0	282

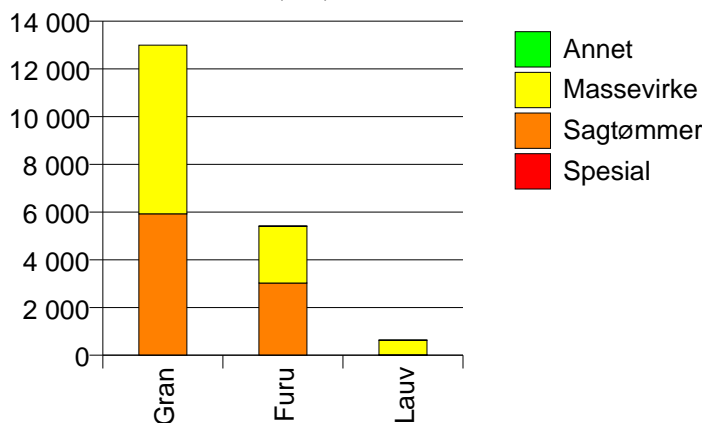


814 BAMBLE

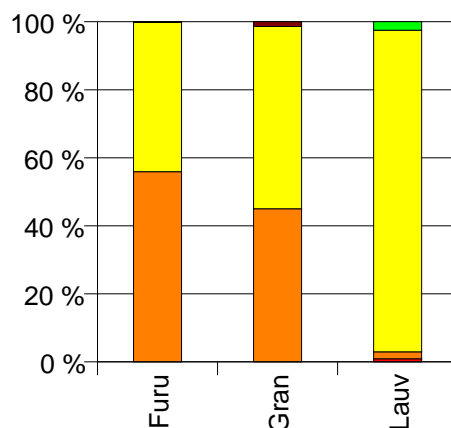
Volum 2002 (kbm)

	Spesial	Sagtømmer	Massevirke	Annet	Vrak	Sum:
Furu		3 025	2 378	6	2	5 411
Gran		5 927	7 062		181	13 170
Lauv	6	13	606	16		641
Sum:	6	8 965	10 046	22	183	19 222

Volum (kbm)



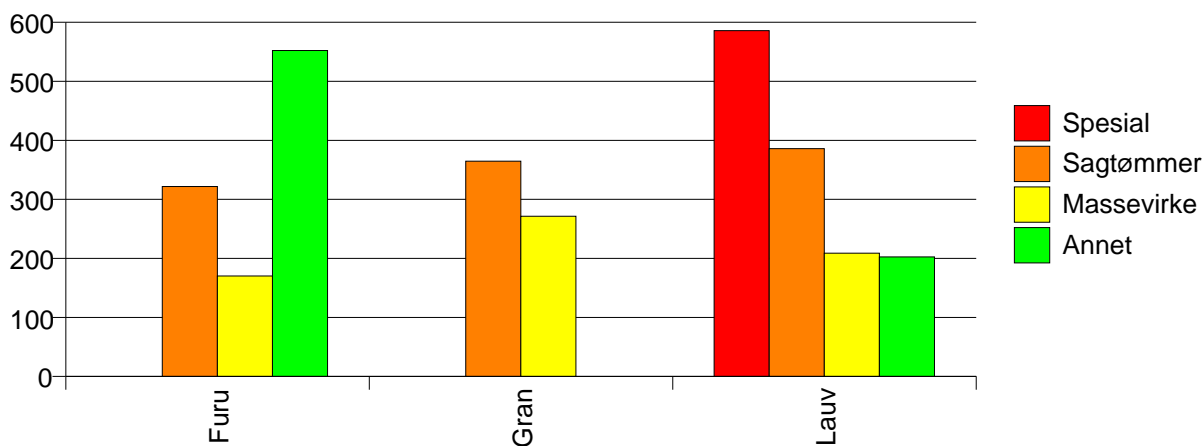
Volum (prosentfordelt)



Gjennomsnittspris 2002 (kr/kbm)

	Spesial	Sagtømmer	Massevirke	Annet	Vrak	Snitt
Furu		322	170	552	0	255
Gran		365	271		0	310
Lauv	586	386	209	203		216
Snitt	586	350	244	298	0	291

Gjennomsnittspris (kr/kbm)

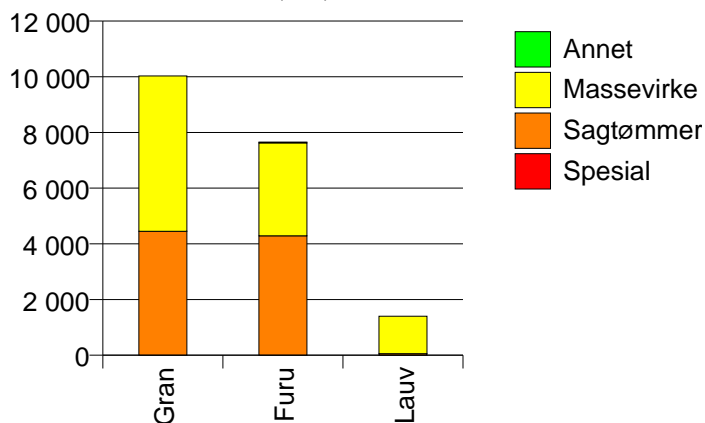


815 KRAGERØ

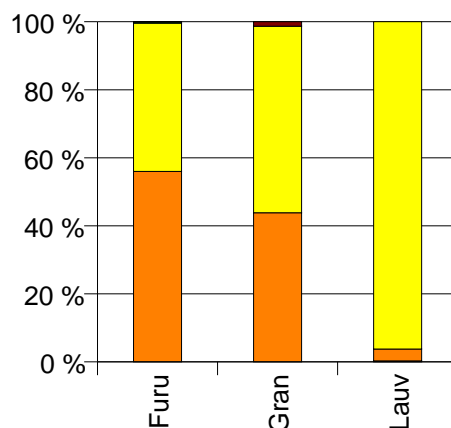
Volum 2002 (kbm)

	Spesial	Sagtømmer	Massevirke	Annet	Vrak	Sum:
Furu	3	4 286	3 339	26	6	7 660
Gran		4 453	5 575		132	10 160
Lauv	4	49	1 349			1 402
Sum:	7	8 788	10 263	26	138	19 222

Volum (kbm)



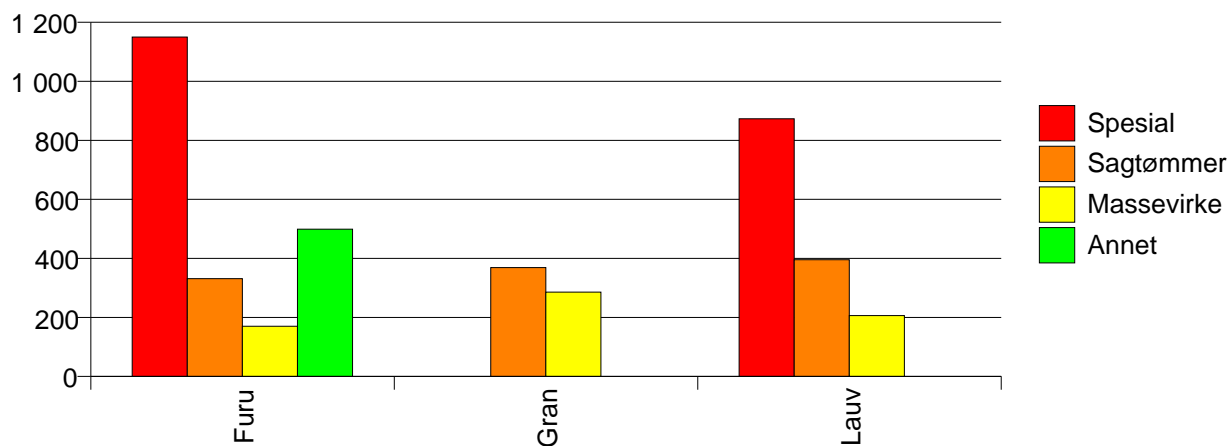
Volum (prosentfordelt)



Gjennomsnittspris 2002 (kr/kbm)

	Spesial	Sagtømmer	Massevirke	Annet	Vrak	Snitt
Furu	1 150	331	170	499	0	262
Gran		369	286		0	318
Lauv	873	395	206			215
Snitt	992	351	238	499	0	288

Gjennomsnittspris (kr/kbm)

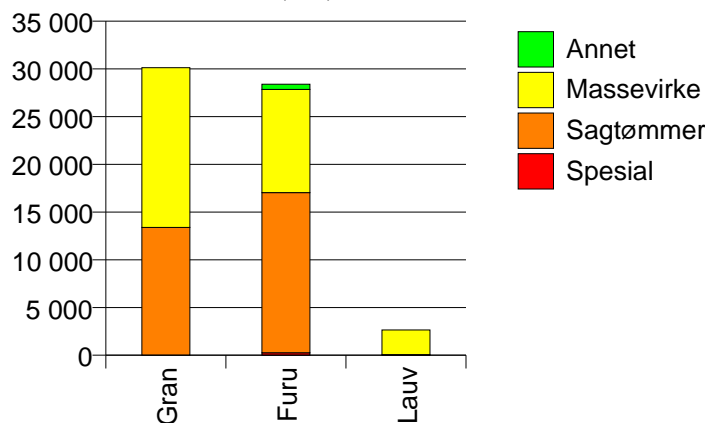


817 DRANGEDAL

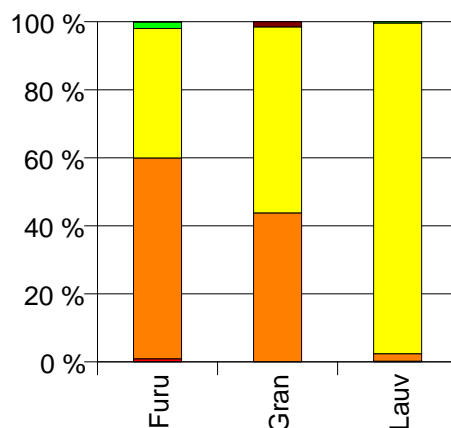
Volum 2002 (kbm)

	Spesial	Sagtømmer	Massevirke	Annet	Vrak	Sum:
Furu	259	16 774	10 805	554	12	28 404
Gran	8	13 381	16 729		459	30 577
Lauv	6	58	2 579	10		2 653
Sum:	273	30 213	30 113	564	471	61 634

Volum (kbm)



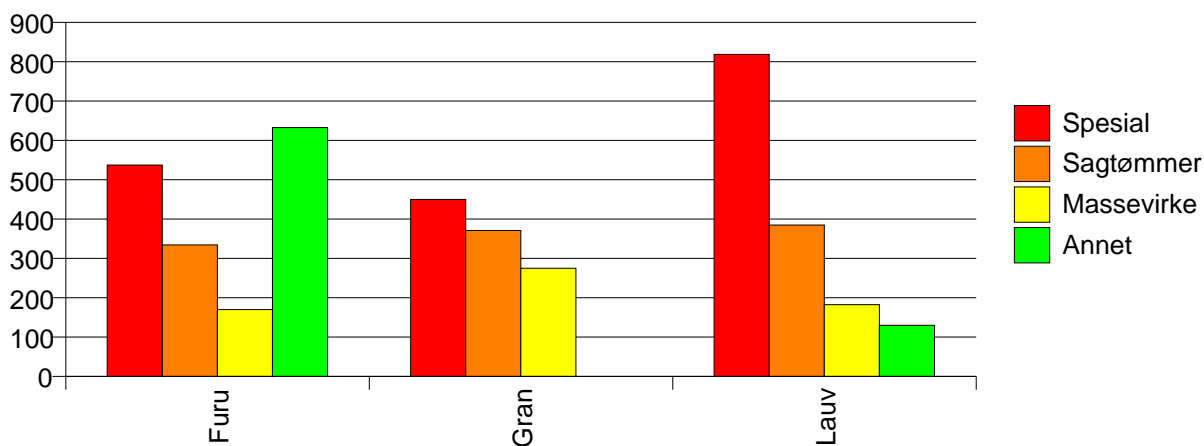
Volum (prosentfordelt)



Gjennomsnittspris 2002 (kr/kbm)

	Spesial	Sagtømmer	Massevirke	Annet	Vrak	Snitt
Furu	537	334	170	633	0	279
Gran	450	371	275		0	313
Lauv	819	385	182	130		188
Snitt	541	350	229	624	0	292

Gjennomsnittspris (kr/kbm)

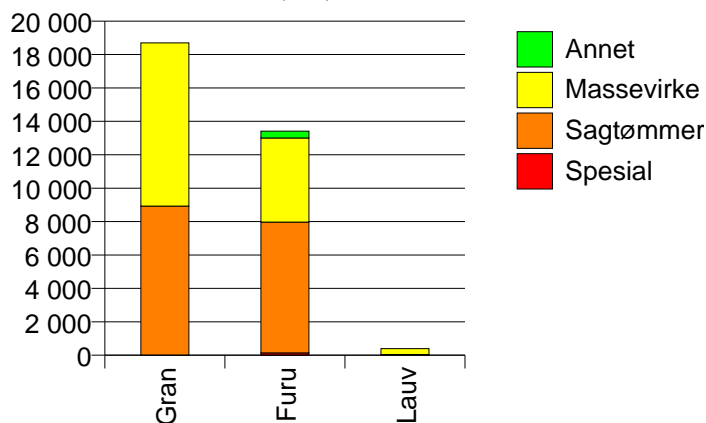


819 NOME

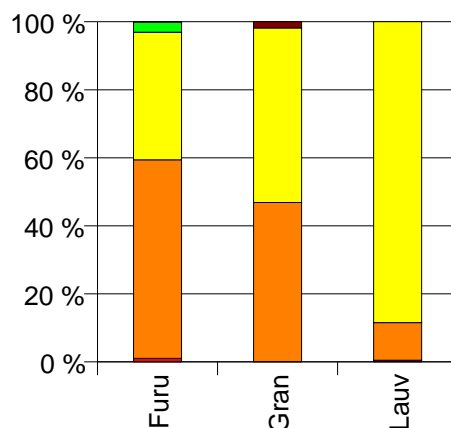
Volum 2002 (kbm)

	Spesial	Sagtømmer	Massevirke	Annet	Vrak	Sum:
Furu	137	7 834	5 031	407	7	13 416
Gran		8 928	9 771		348	19 047
Lauv	2	44	353			399
Sum:	139	16 806	15 155	407	355	32 862

Volum (kbm)



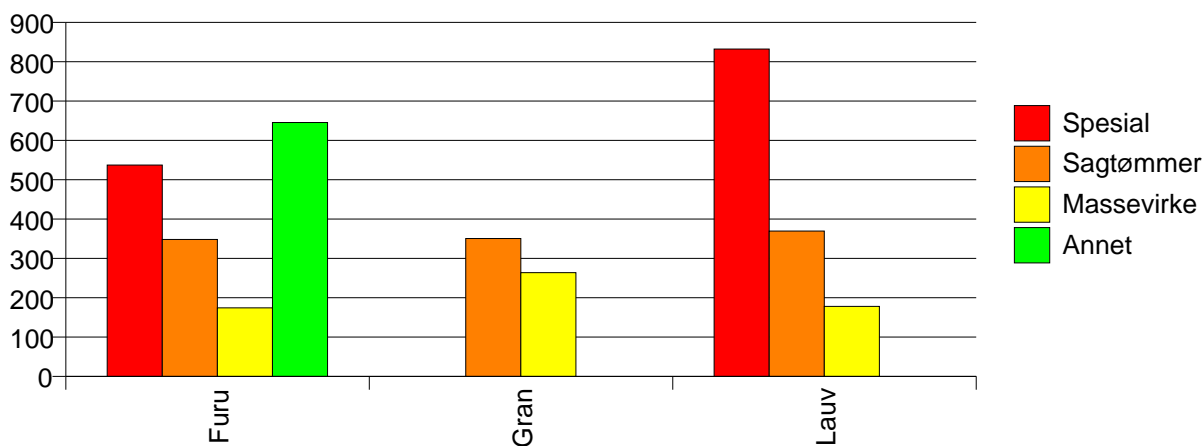
Volum (prosentfordelt)



Gjennomsnittspris 2002 (kr/kbm)

	Spesial	Sagtømmer	Massevirke	Annet	Vrak	Snitt
Furu	537	348	174	645	0	294
Gran		351	264		0	300
Lauv	832	370	178			203
Snitt	542	350	232	645	0	296

Gjennomsnittspris (kr/kbm)

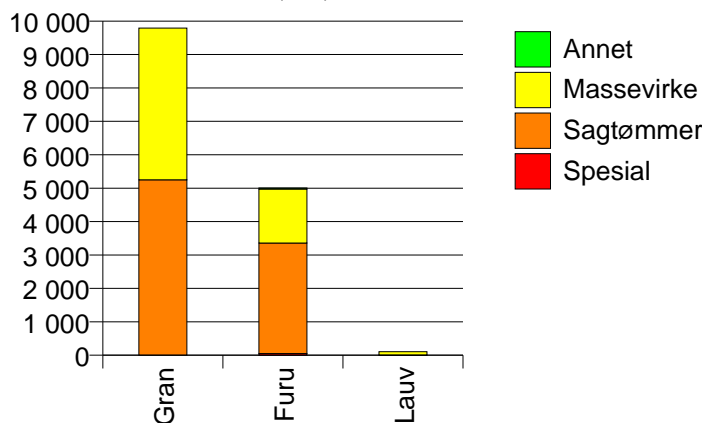


821 BØ

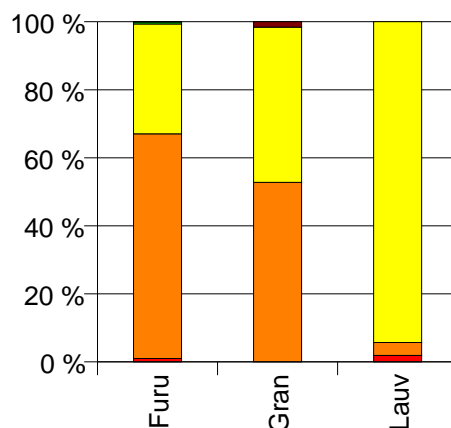
Volum 2002 (kbm)

	Spesial	Sagtømmer	Massevirke	Annet	Vrak	Sum:
Furu	51	3 306	1 619	29	3	5 008
Gran		5 249	4 540		159	9 948
Lauv	2	4	99			105
Sum:	53	8 559	6 258	29	162	15 061

Volum (kbm)



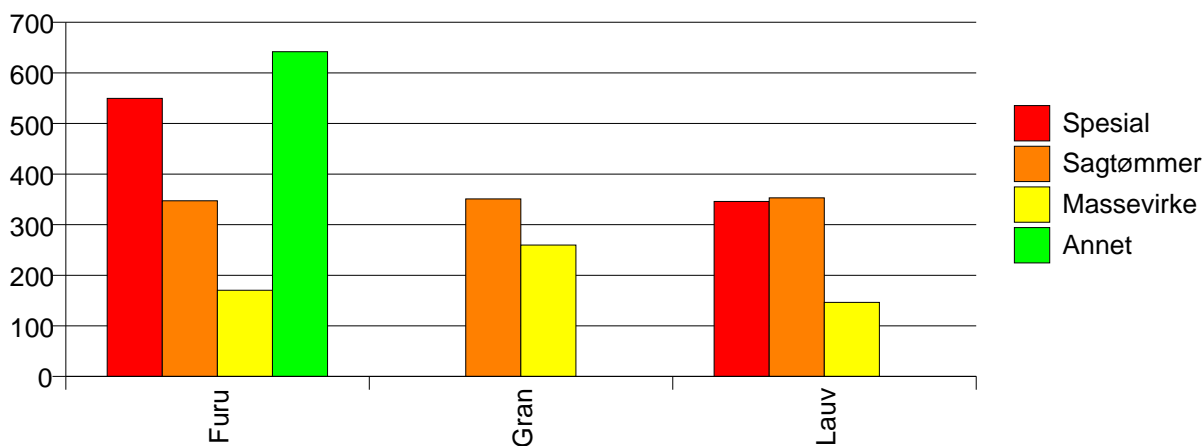
Volum (prosentfordelt)



Gjennomsnittspris 2002 (kr/kbm)

	Spesial	Sagtømmer	Massevirke	Annet	Vrak	Snitt
Furu	550	347	170	642	0	294
Gran		351	260		0	304
Lauv	346	353	146			158
Snitt	542	349	235	642	0	299

Gjennomsnittspris (kr/kbm)

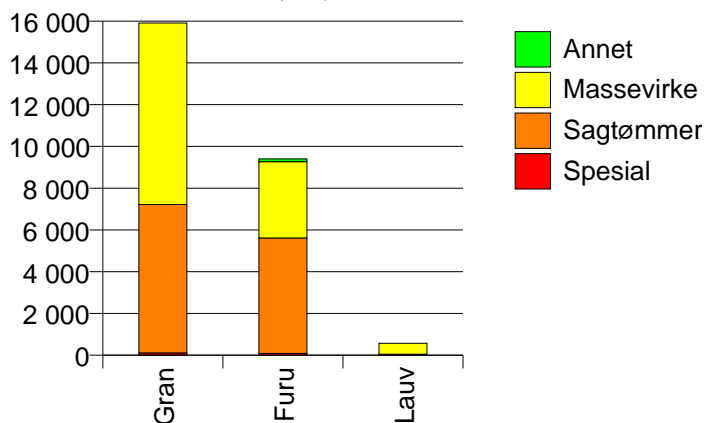


822 SAUHERAD

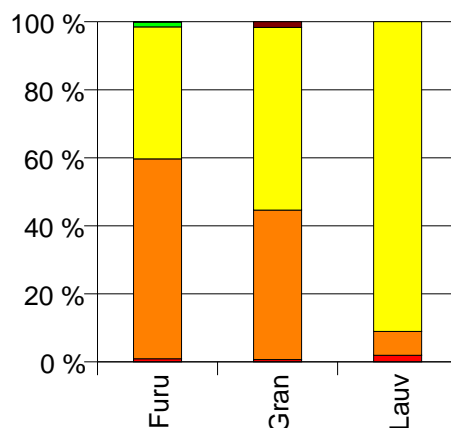
Volum 2002 (kbm)

	Spesial	Sagtømmer	Massevirke	Annet	Vrak	Sum:
Furu	86	5 529	3 654	134	7	9 410
Gran	109	7 111	8 688		272	16 180
Lauv	11	40	518			569
Sum:	206	12 680	12 860	134	279	26 159

Volum (kbm)



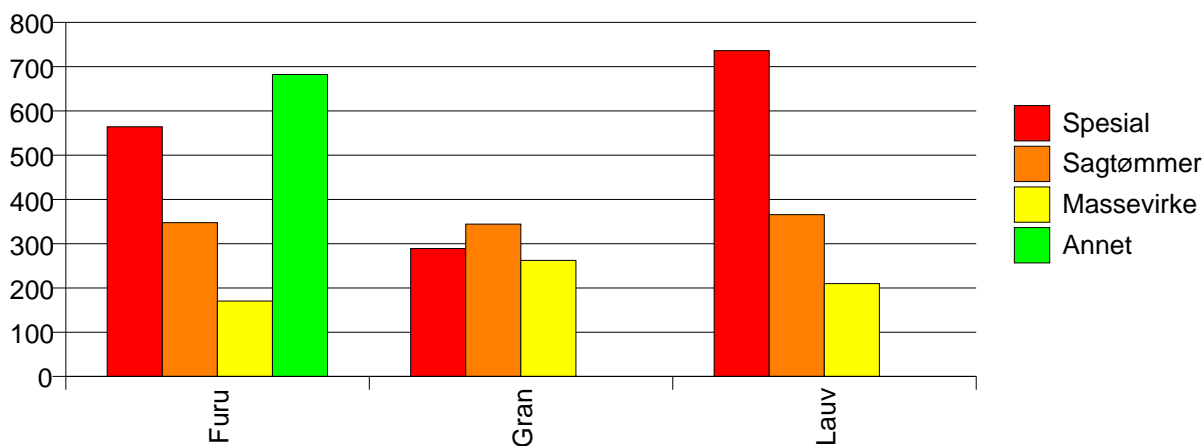
Volum (prosentfordelt)



Gjennomsnittspris 2002 (kr/kbm)

	Spesial	Sagtømmer	Massevirke	Annet	Vrak	Snitt
Furu	564	347	170	682	0	285
Gran	289	344	262		0	294
Lauv	736	365	210			231
Snitt	428	346	234	682	0	289

Gjennomsnittspris (kr/kbm)

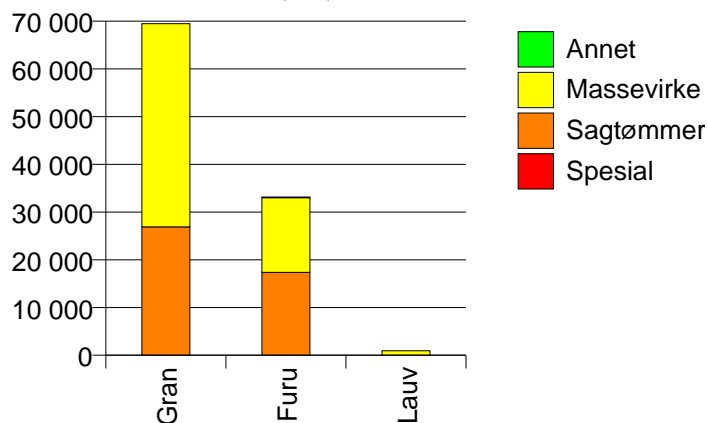


826 TINN

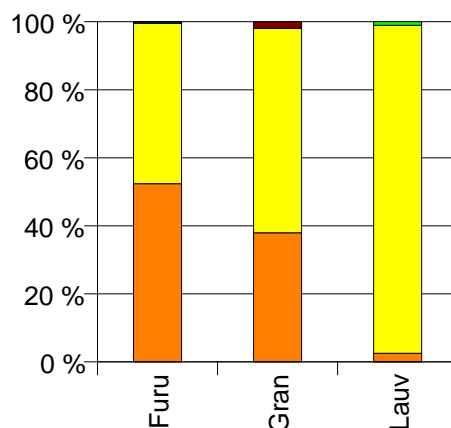
Volum 2002 (kbm)

	Spesial	Sagtømmer	Massevirke	Annet	Vrak	Sum:
Furu		17 372	15 631	142	20	33 165
Gran	2	26 881	42 565		1 364	70 812
Lauv	1	23	914	10		948
Sum:	3	44 276	59 110	152	1 384	104 925

Volum (kbm)



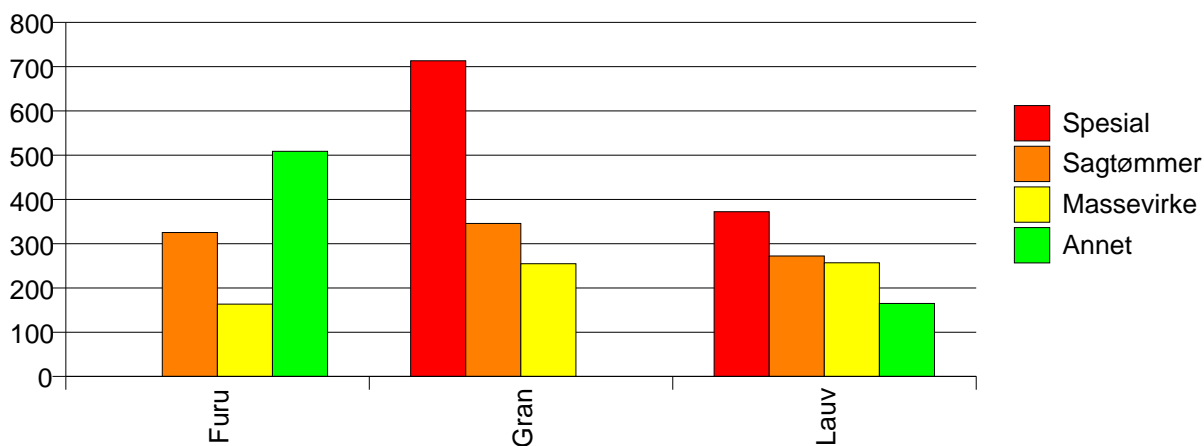
Volum (prosentfordelt)



Gjennomsnittspris 2002 (kr/kbm)

	Spesial	Sagtømmer	Massevirke	Annet	Vrak	Snitt
Furu		325	164	509	0	249
Gran	713	346	255		0	284
Lauv	372	272	257	165		256
Snitt	599	338	231	486	0	273

Gjennomsnittspris (kr/kbm)

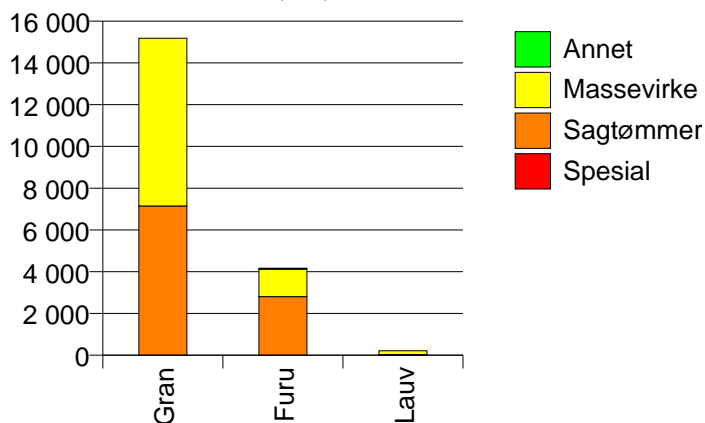


827 HJARTDAL

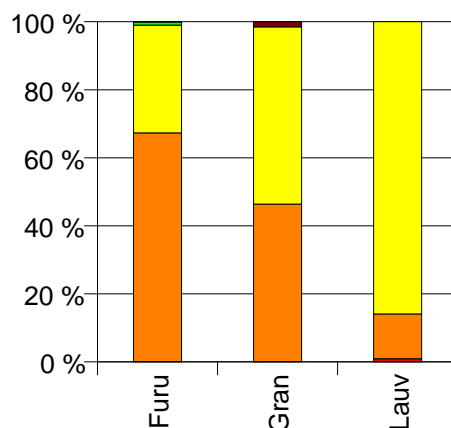
Volum 2002 (kbm)

	Spesial	Sagtømmer	Massevirke	Annet	Vrak	Sum:
Furu		2 804	1 320	39	2	4 165
Gran		7 148	8 033		232	15 413
Lauv	2	28	183			213
Sum:	2	9 980	9 536	39	234	19 791

Volum (kbm)



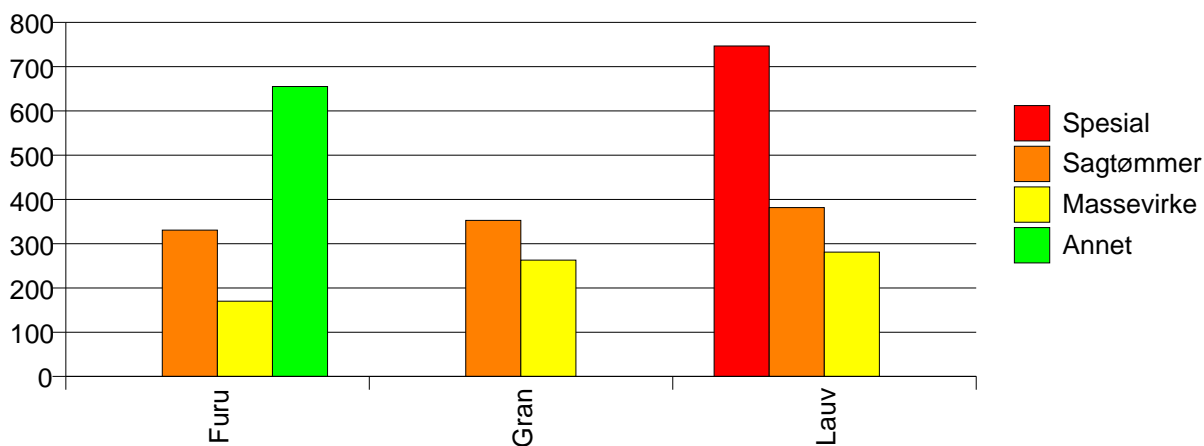
Volum (prosentfordelt)



Gjennomsnittspris 2002 (kr/kbm)

	Spesial	Sagtømmer	Massevirke	Annet	Vrak	Snitt
Furu		330	170	655	0	283
Gran		353	263		0	300
Lauv	747	381	281			298
Snitt	747	346	250	655	0	297

Gjennomsnittspris (kr/kbm)

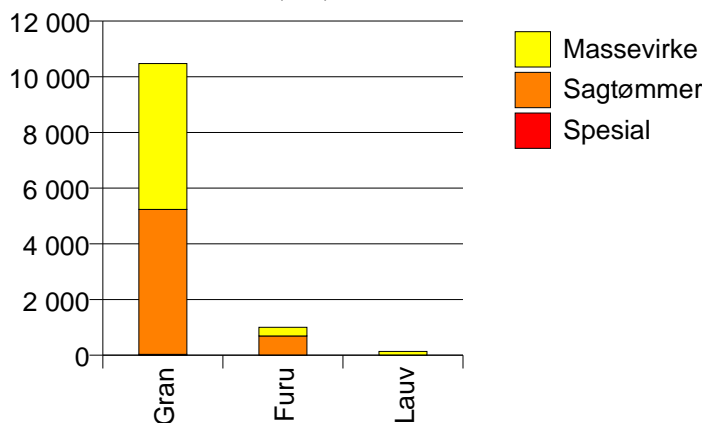


828 SELJORD

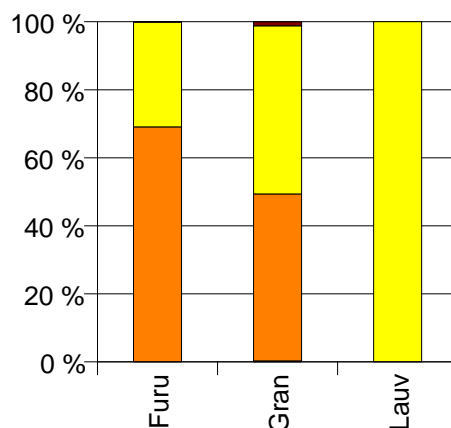
Volum 2002 (kbm)

	Spesial	Sagtømmer	Massevirke	Vrak	Sum:
Furu		693	309	1	1 003
Gran	31	5 204	5 242	125	10 602
Lauv			138		138
Sum:	31	5 897	5 689	126	11 743

Volum (kbm)



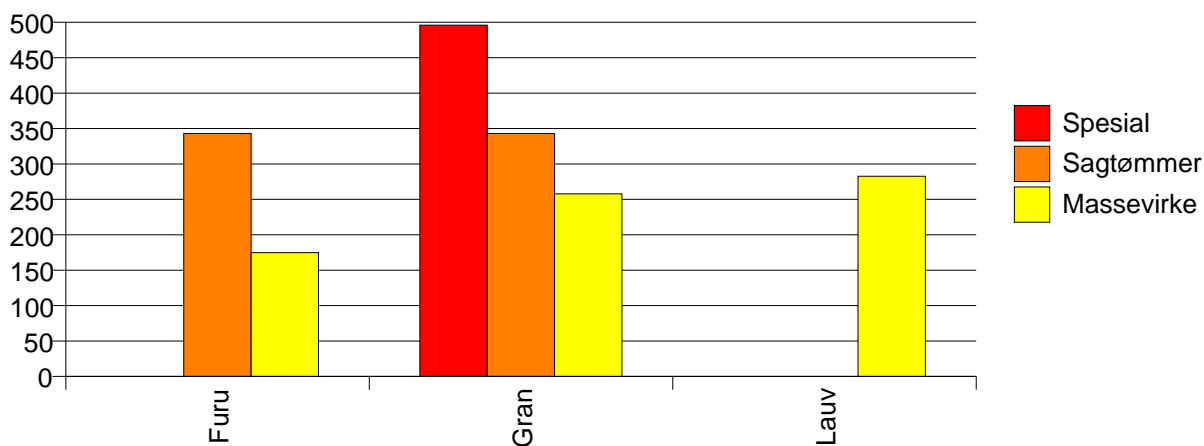
Volum (prosentfordelt)



Gjennomsnittspris 2002 (kr/kbm)

	Spesial	Sagtømmer	Massevirke	Vrak	Snitt
Furu		343	175	0	291
Gran	496	343	258	0	297
Lauv			283		283
Snitt	496	343	254	0	297

Gjennomsnittspris (kr/kbm)

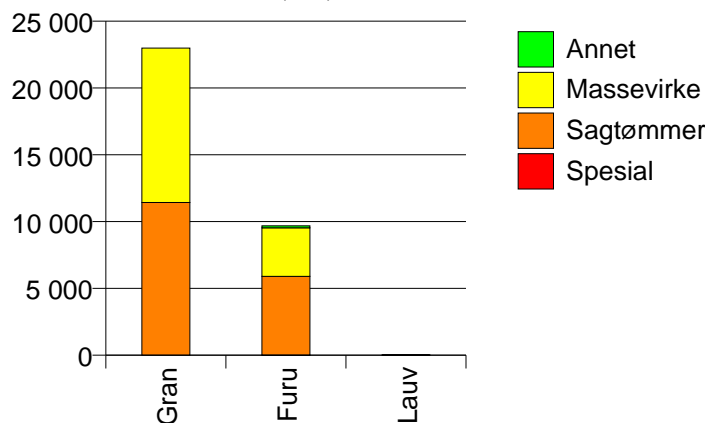


829 KVITSEID

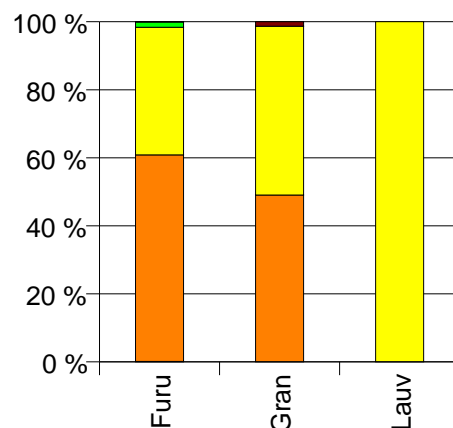
Volum 2002 (kbm)

	Spesial	Sagtømmer	Massevirke	Annet	Vrak	Sum:
Furu	14	5 884	3 632	155	4	9 689
Gran		11 427	11 552		308	23 287
Lauv			29			29
Sum:	14	17 311	15 213	155	312	33 005

Volum (kbm)



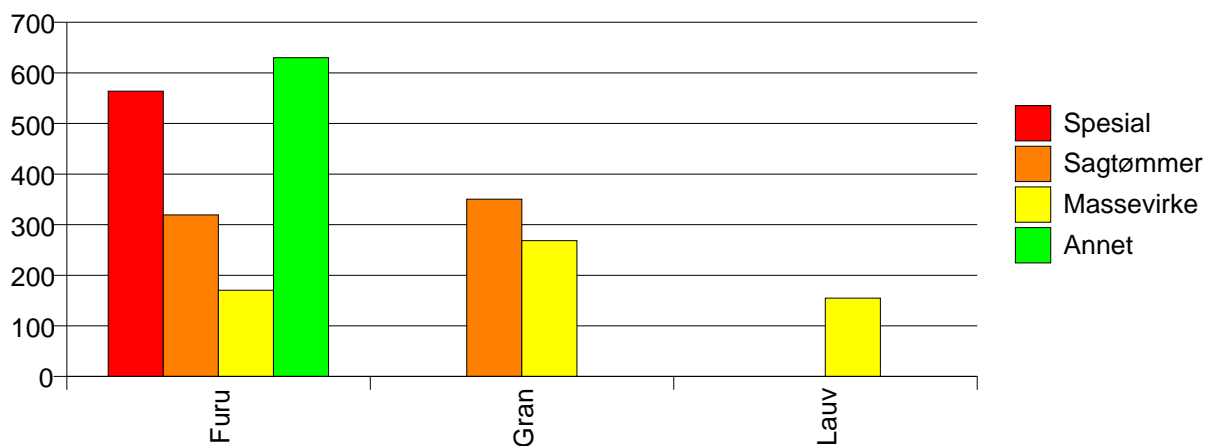
Volum (prosentfordelt)



Gjennomsnittspris 2002 (kr/kbm)

	Spesial	Sagtømmer	Massevirke	Annet	Vrak	Snitt
Furu	564	319	170	630	0	269
Gran		350	269		0	305
Lauv			155			155
Snitt	564	340	245	630	0	294

Gjennomsnittspris (kr/kbm)

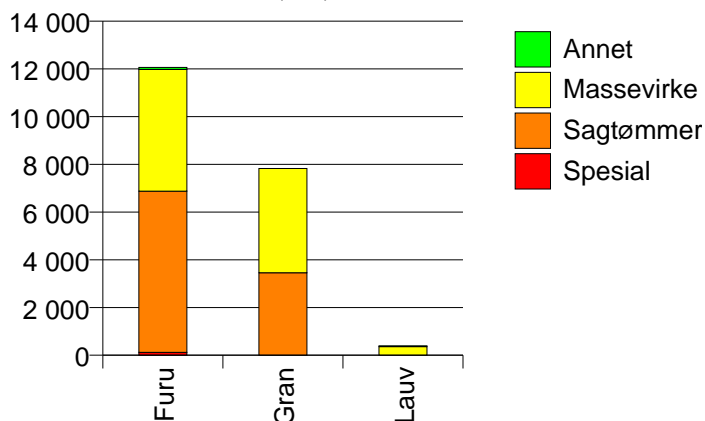


830 NISSEDAL

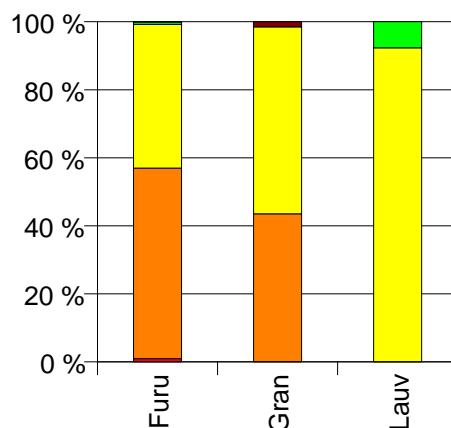
Volum 2002 (kbm)

	Spesial	Sagtømmer	Massevirke	Annet	Vrak	Sum:
Furu	118	6 757	5 100	85	5	12 065
Gran		3 457	4 365		121	7 943
Lauv			362	30		392
Sum:	118	10 214	9 827	115	126	20 400

Volum (kbm)



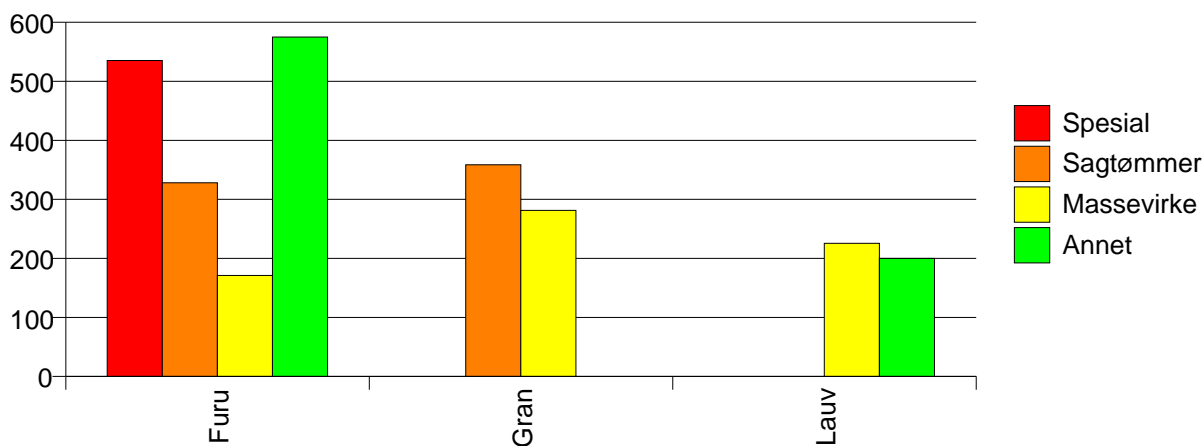
Volum (prosentfordelt)



Gjennomsnittspris 2002 (kr/kbm)

	Spesial	Sagtømmer	Massevirke	Annet	Vrak	Snitt
Furu	535	328	171	575	0	265
Gran		359	281		0	311
Lauv			225	200		224
Snitt	535	338	222	477	0	282

Gjennomsnittspris (kr/kbm)

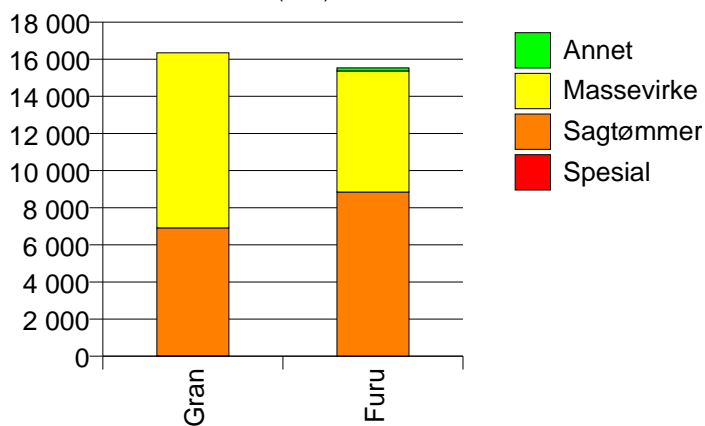


831 FYRESDAL

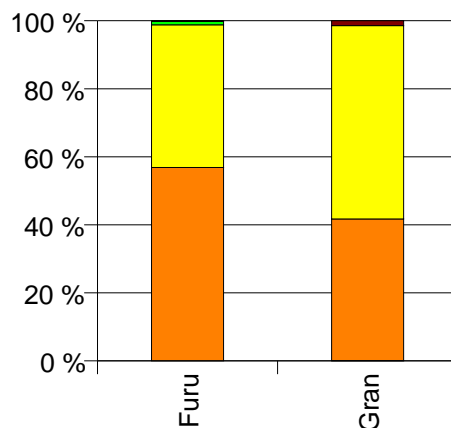
Volum 2002 (kbm)

	Spesial	Sagtømmer	Massevirke	Annet	Vrak	Sum:
Furu		8 843	6 528	165	21	15 557
Gran	16	6 900	9 426		239	16 581
Sum:	16	15 743	15 954	165	260	32 138

Volum (kbm)



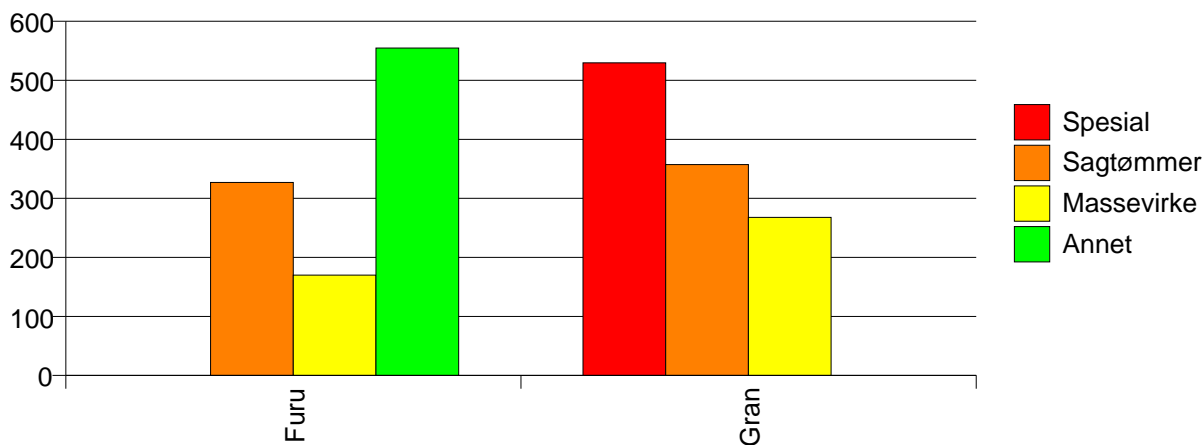
Volum (prosentfordelt)



Gjennomsnittspris 2002 (kr/kbm)

	Spesial	Sagtømmer	Massevirke	Annet	Vrak	Snitt
Furu		327	170	555	0	263
Gran	530	357	268		0	301
Snitt	530	340	228	555	0	283

Gjennomsnittspris (kr/kbm)

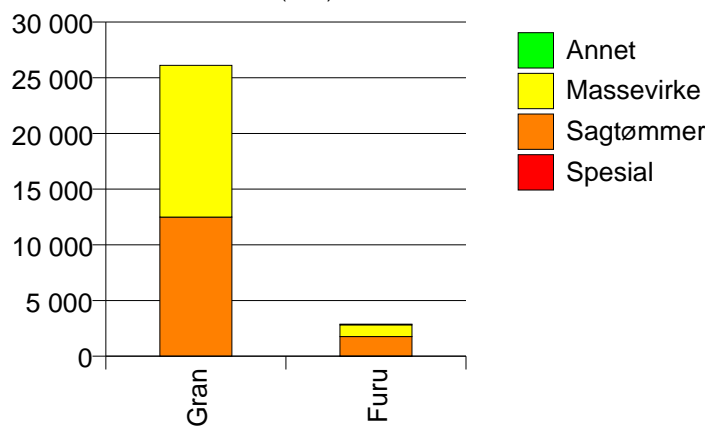


833 TOKKE

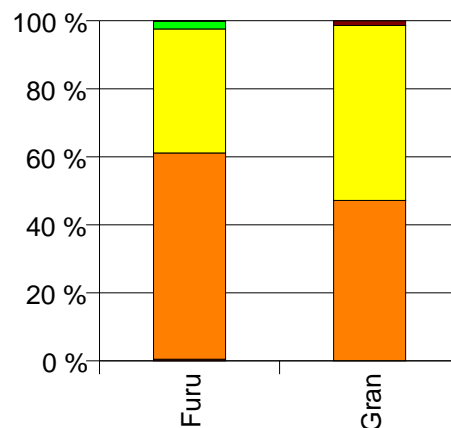
Volum 2002 (kbm)

	Spesial	Sagtømmer	Massevirke	Annet	Vrak	Sum:
Furu	14	1 750	1 052	67	3	2 886
Gran		12 490	13 626		365	26 481
Sum:	14	14 240	14 678	67	368	29 367

Volum (kbm)



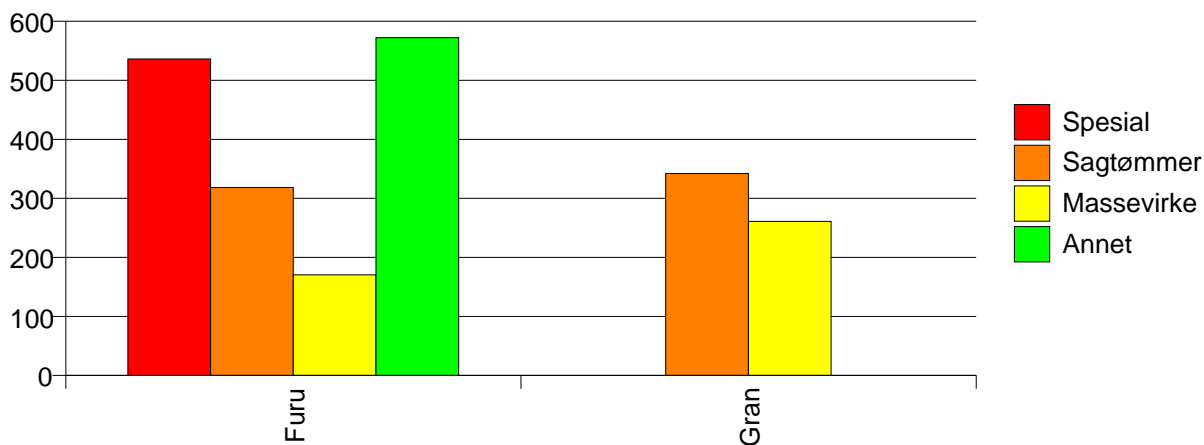
Volum (prosentfordelt)



Gjennomsnittspris 2002 (kr/kbm)

	Spesial	Sagtømmer	Massevirke	Annet	Vrak	Snitt
Furu	536	318	171	572	0	271
Gran		342	261		0	296
Snitt	536	339	254	572	0	293

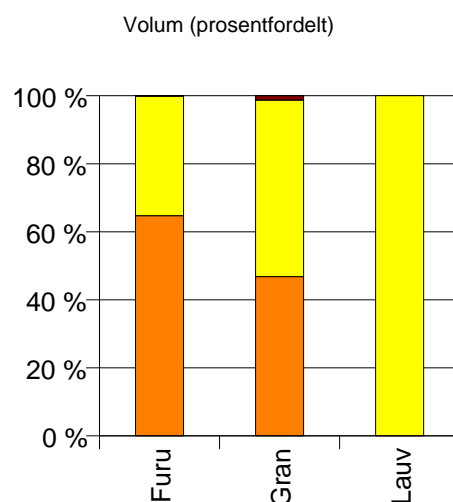
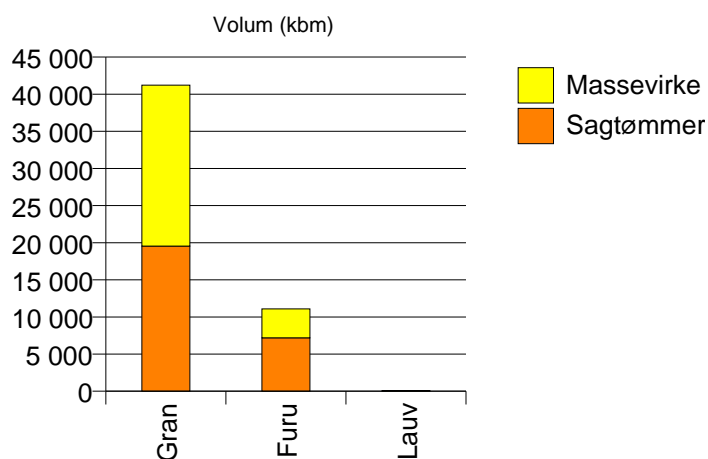
Gjennomsnittspris (kr/kbm)



834 VINJE

Volum 2002 (kbm)

	Sagtømmer	Massevirke	Vrak	Sum:
Furu	7 186	3 901	10	11 097
Gran	19 553	21 668	537	41 758
Lauv		79		79
Sum:	26 739	25 648	547	52 934



Gjennomsnittspris 2002 (kr/kbm)

	Sagtømmer	Massevirke	Vrak	Snitt
Furu	297	170	0	252
Gran	336	257	0	290
Lauv		289		289
Snitt	325	244	0	282

