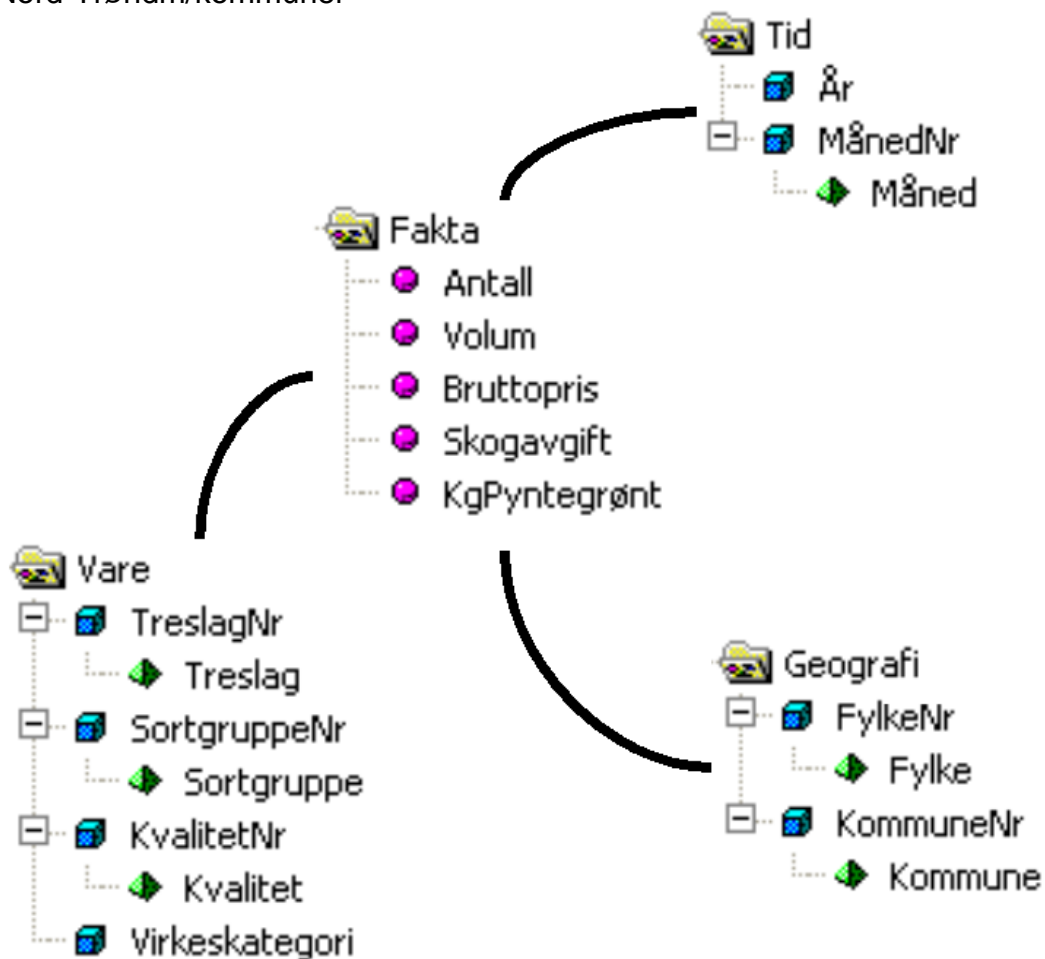


# Virkestatistikk fra SKOG-DATA AS

Nord-Trøndm/kommuner



Dataene i rapporten er hentet fra databasen som inneholder virkesdata med tilhørende innbetalinger av skogavgift. Rapporten er laget med Business Objects, som er sluttbrukerverktøyet i Skog-Data sine nye datavarehus-løsninger. Business Objects er ett meget sterkt rapportverktøy som kan presentere store mengder data effektivt.

Rapportene kan lastes ned fra [www.skogdata.no/statistikk](http://www.skogdata.no/statistikk)

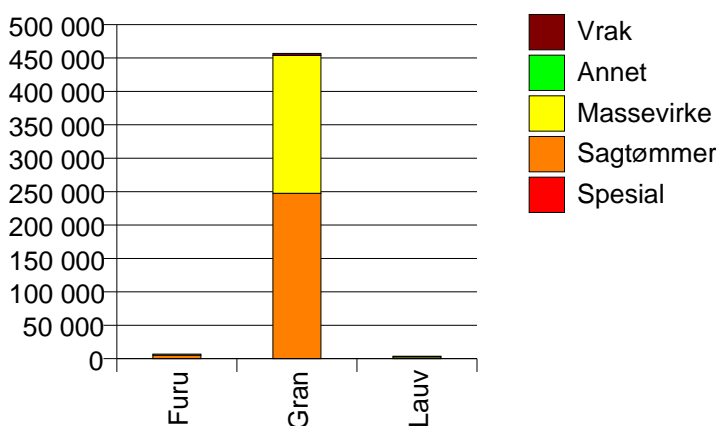
For mer informasjon, kontakt: [alexanderh@skogdata.no](mailto:alexanderh@skogdata.no)

## Nord-Trøndelag

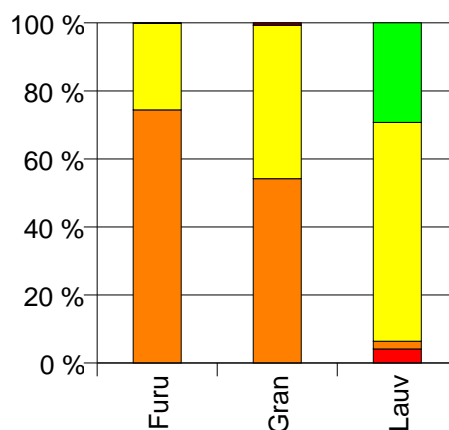
Volum 2002 (kbm)

	Spesial	Sagtømmer	Massevirke	Annet	Vrak	Sum:
Furu	0	5 064	1 733		7	6 804
Gran	76	247 492	206 207	44	3 046	456 865
Lauv	155	86	2 422	1 101		3 764
Sum:	231	252 642	210 362	1 145	3 053	467 433

Volum (kbm)



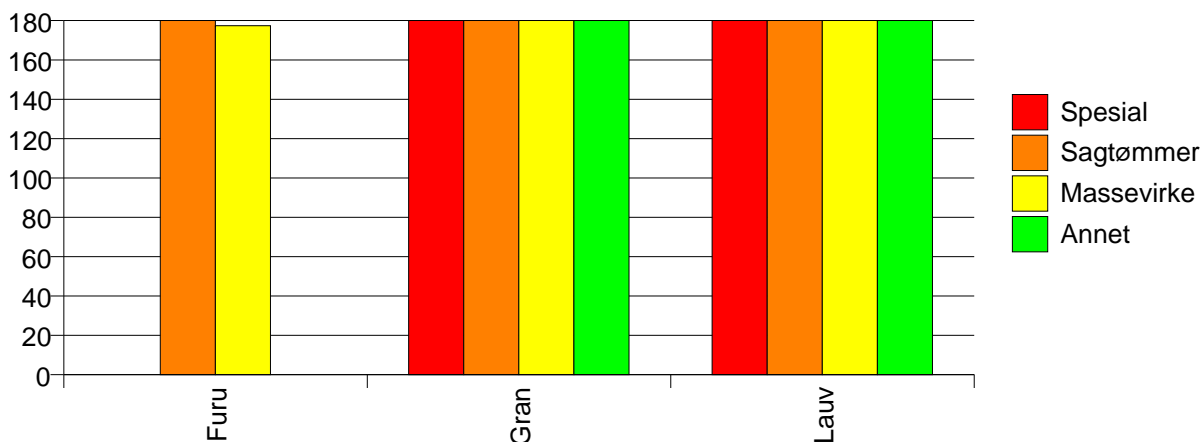
Volum (prosentfordelt)



Gjennomsnittspris 2002 (kr/kbm)

	Spesial	Sagtømmer	Massevirke	Annet	Vrak	Snitt
Furu	#DIV/0	323	177		0	286
Gran	577	354	239	672	0	300
Lauv	433	359	237	316		271
Snitt	484	353	239	330	0	299

Gjennomsnittspris (kr/kbm)

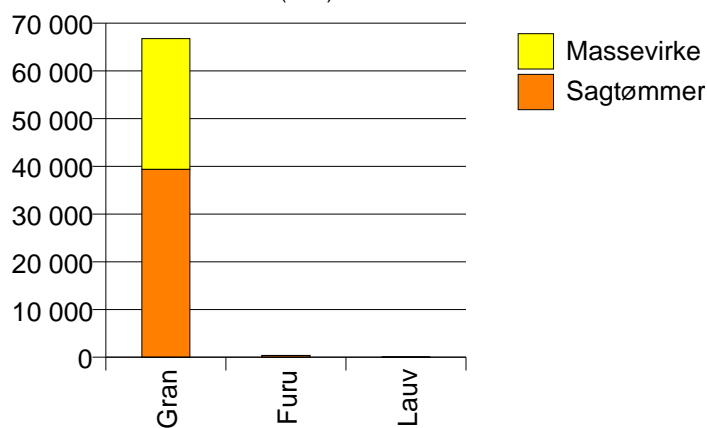


# 1702 STEINKJER

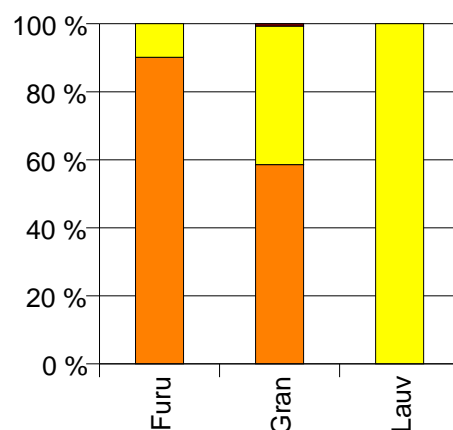
Volum 2002 (kbm)

	Sagtømmer	Massevirke	Vrak	Sum:
Furu	339	37		376
Gran	39 382	27 371	456	67 209
Lauv		45		45
Sum:	39 721	27 453	456	67 630

Volum (kbm)



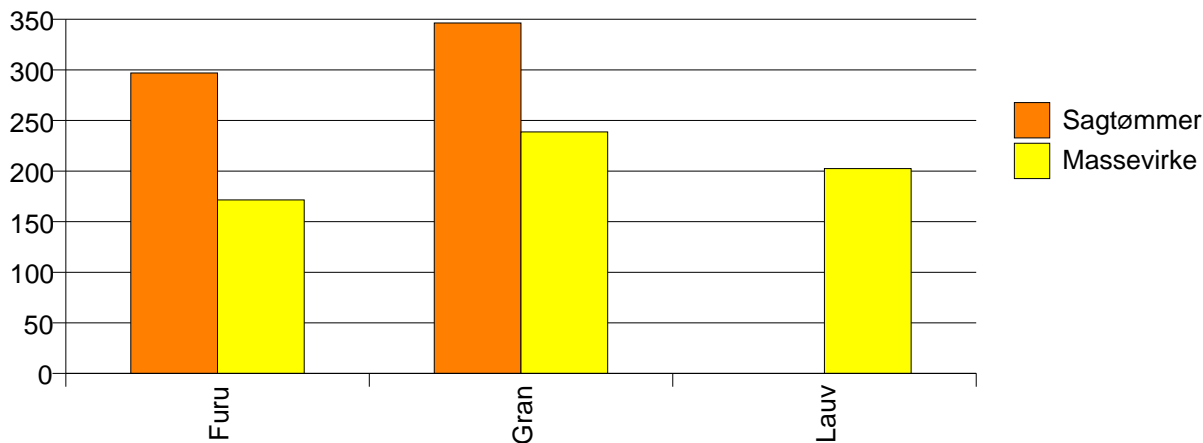
Volum (prosentfordelt)



Gjennomsnittspris 2002 (kr/kbm)

	Sagtømmer	Massevirke	Vrak	Snitt
Furu	297	172		285
Gran	346	239	0	300
Lauv		202		202
Snitt	346	239	0	300

Gjennomsnittspris (kr/kbm)

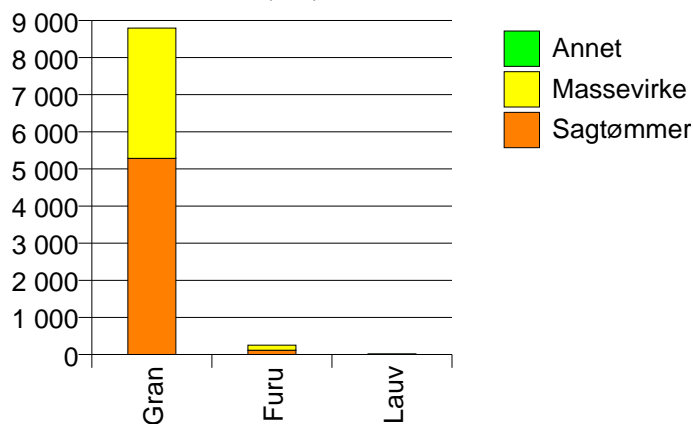


# 1703 NAMSOS

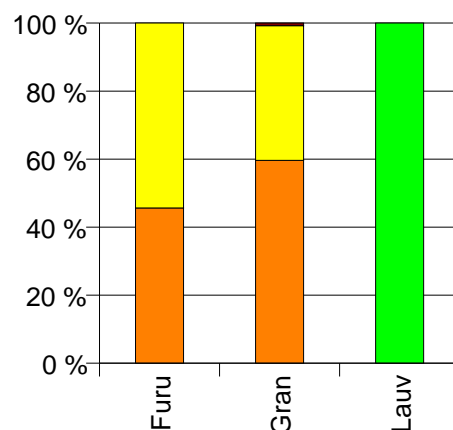
Volum 2002 (kbm)

	Sagtømmer	Massevirke	Annet	Vrak	Sum:
Furu	115	137			252
Gran	5 284	3 509		66	8 859
Lauv		0	18		18
Sum:	5 399	3 646	18	66	9 129

Volum (kbm)



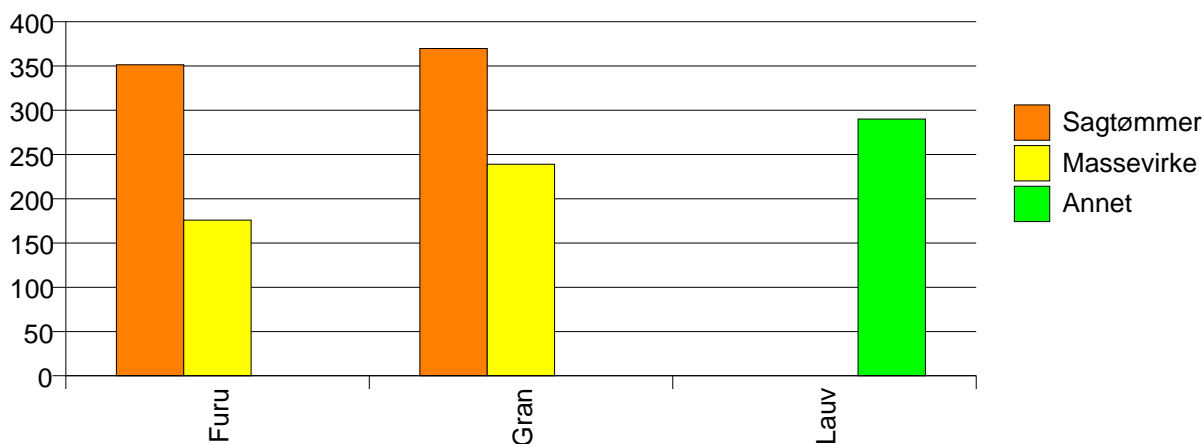
Volum (prosentfordelt)



Gjennomsnittspris 2002 (kr/kbm)

	Sagtømmer	Massevirke	Annet	Vrak	Snitt
Furu	351	176			256
Gran	370	239		0	315
Lauv		#DIV/0	290		344
Snitt	369	237	290	0	313

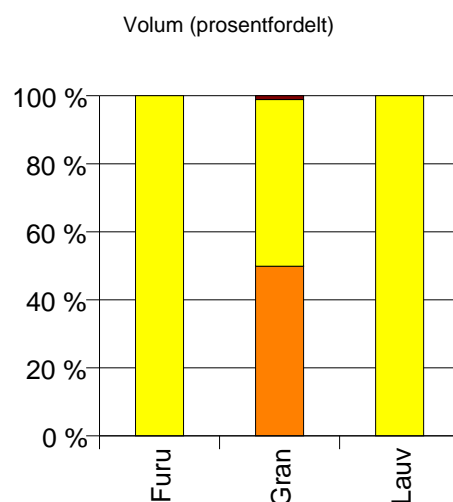
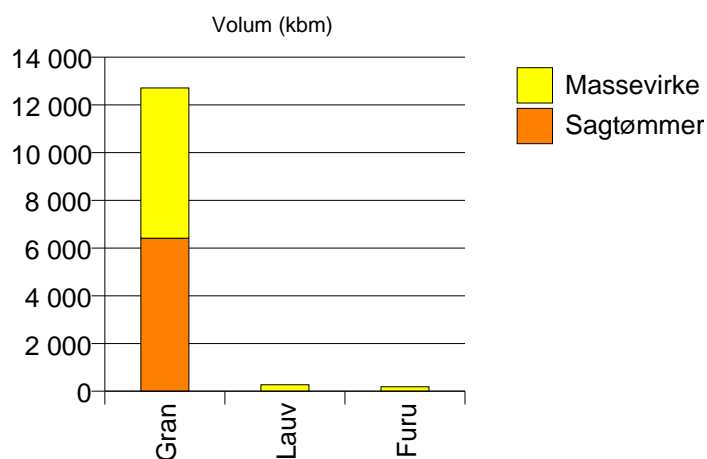
Gjennomsnittspris (kr/kbm)



# 1711 MERÅKER

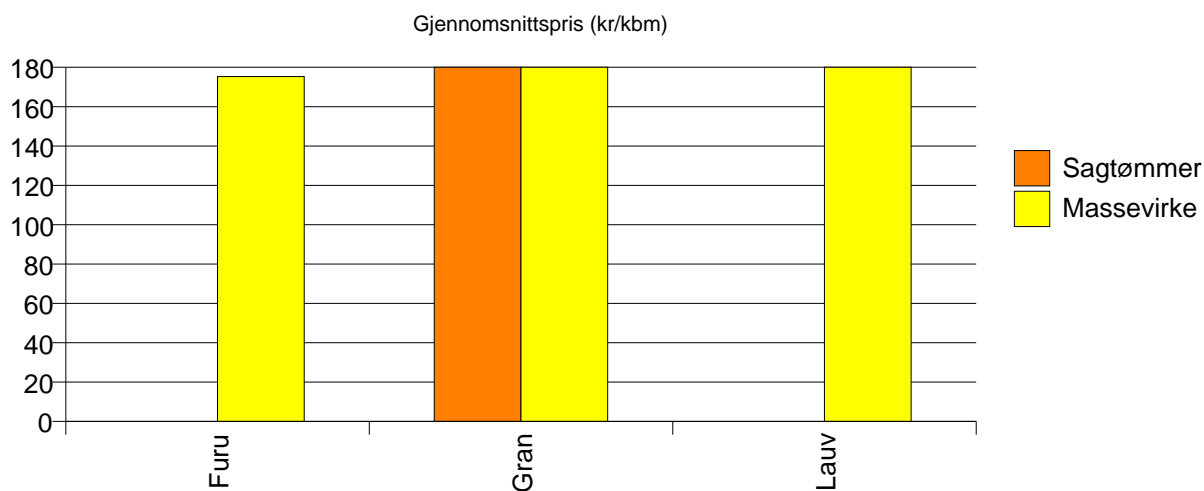
## Volum 2002 (kbm)

	Sagtømmer	Massevirke	Vrak	Sum:
Furu	0	187		187
Gran	6 411	6 296	145	12 852
Lauv		273		273
Sum:	6 411	6 756	145	13 312



## Gjennomsnittspris 2002 (kr/kbm)

	Sagtømmer	Massevirke	Vrak	Snitt
Furu	#DIV/0	175		176
Gran	368	234	0	298
Lauv		205		205
Snitt	368	231	0	295

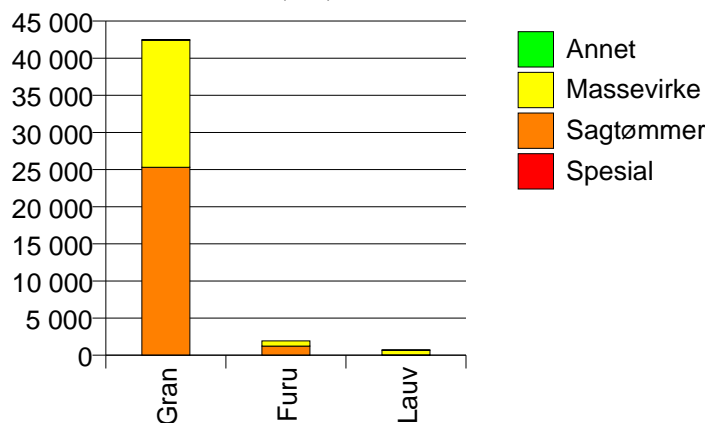


# 1714 STJØRDAL

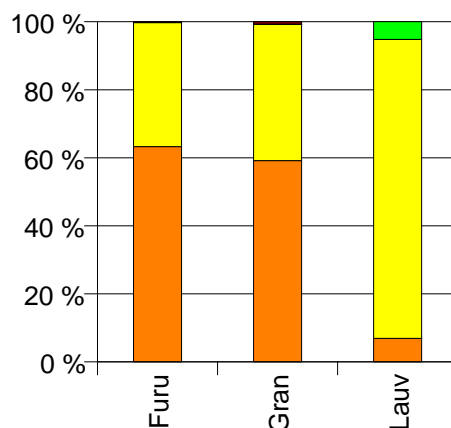
## Volum 2002 (kbm)

	Spesial	Sagtømmer	Massevirke	Annet	Vrak	Sum:
Furu	0	1 222	704		5	1 931
Gran		25 312	17 127	36	314	42 789
Lauv		49	624	37		710
Sum:	0	26 583	18 455	73	319	45 430

Volum (kbm)



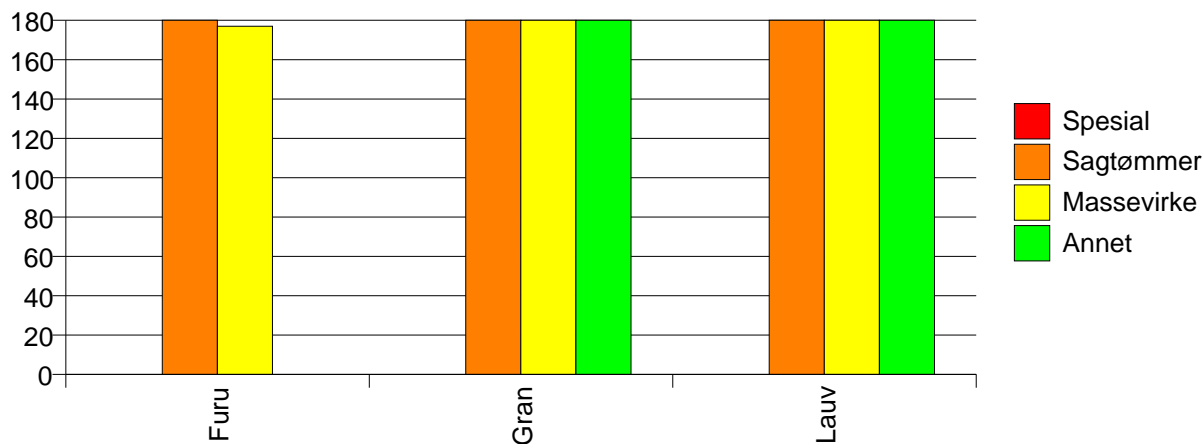
Volum (prosentfordelt)



## Gjennomsnittspris 2002 (kr/kbm)

	Spesial	Sagtømmer	Massevirke	Annet	Vrak	Snitt
Furu	#DIV/0	347	177		0	284
Gran		373	233	752	0	314
Lauv		468	224	792		271
Snitt	#DIV/0	372	231	772	0	312

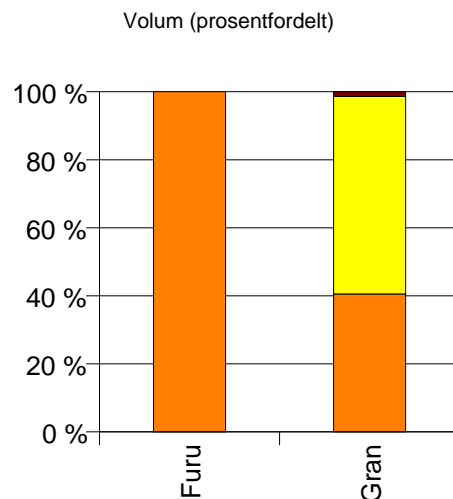
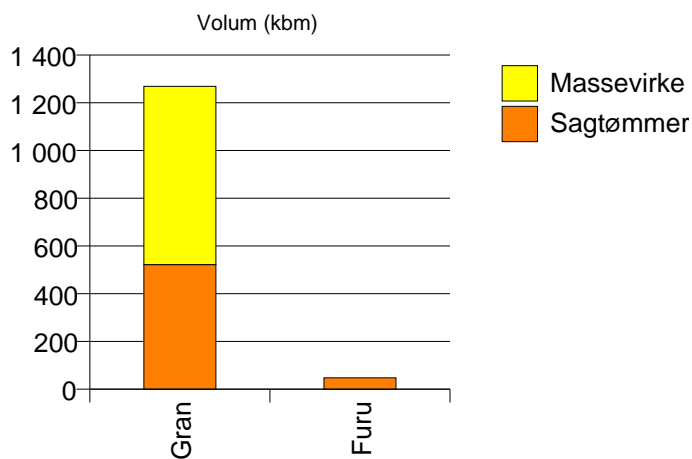
Gjennomsnittspris (kr/kbm)



# 1717 FROSTA

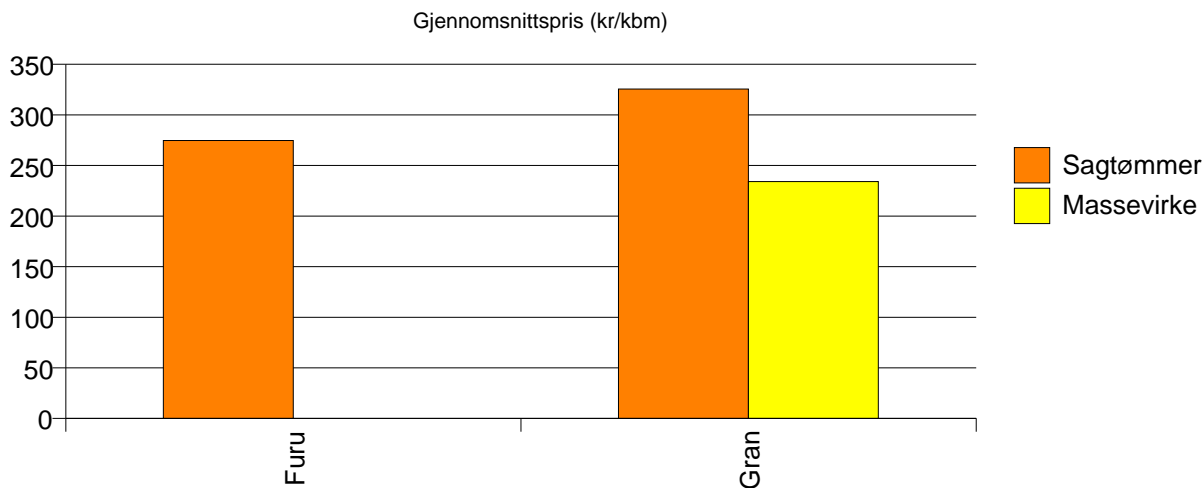
## Volum 2002 (kbm)

	Sagtømmer	Massevirke	Vrak	Sum:
Furu	48			48
Gran	522	747	18	1 287
Sum:	570	747	18	1 335



## Gjennomsnittspris 2002 (kr/kbm)

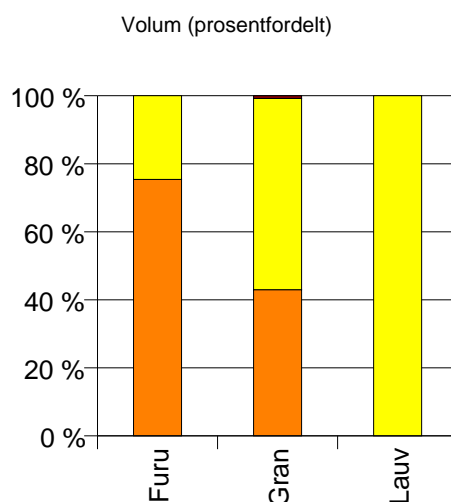
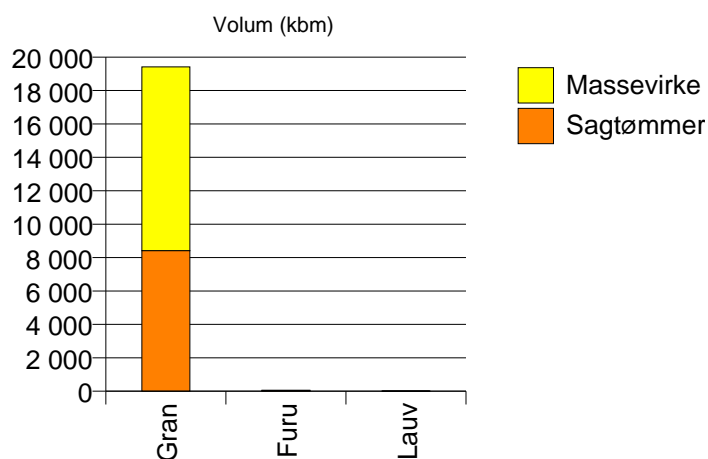
	Sagtømmer	Massevirke	Vrak	Snitt
Furu	275			275
Gran	326	234	0	268
Snitt	321	234	0	268



## 1718 LEKSVIK

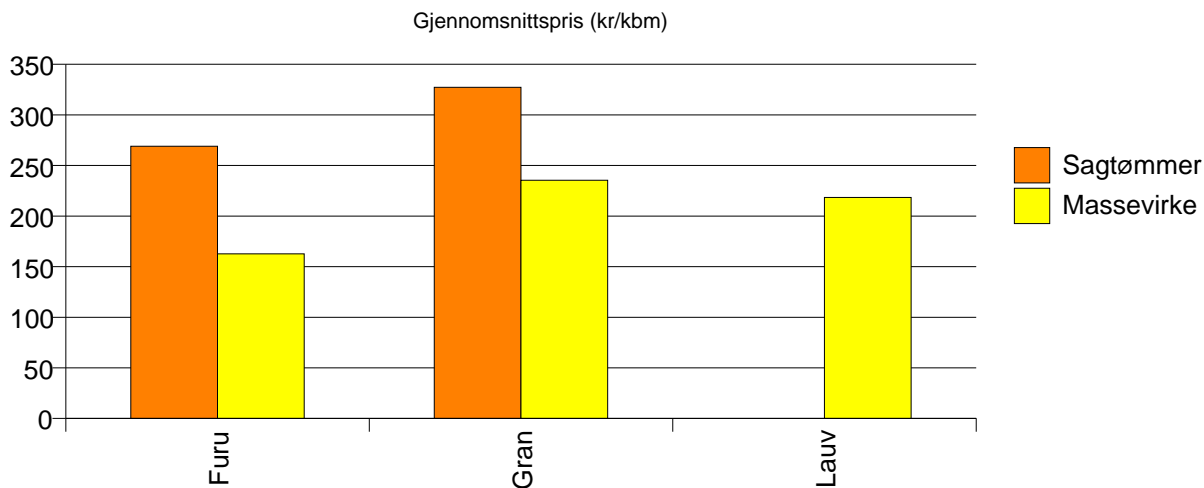
Volum 2002 (kbm)

	Sagtømmer	Massevirke	Vrak	Sum:
Furu	46	15		61
Gran	8 415	11 002	154	19 571
Lauv		8		8
Sum:	8 461	11 025	154	19 640



Gjennomsnittspris 2002 (kr/kbm)

	Sagtømmer	Massevirke	Vrak	Snitt
Furu	269	163		243
Gran	327	235	0	273
Lauv		218		218
Snitt	327	235	0	273

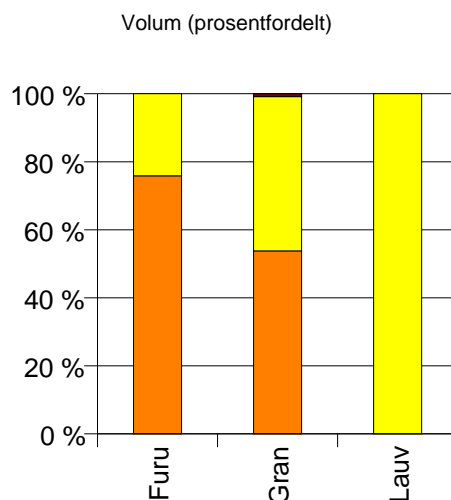
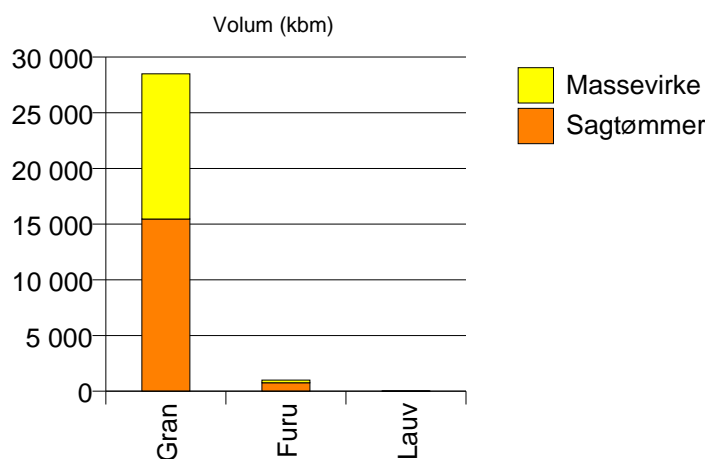




# 1719 LEVANGER

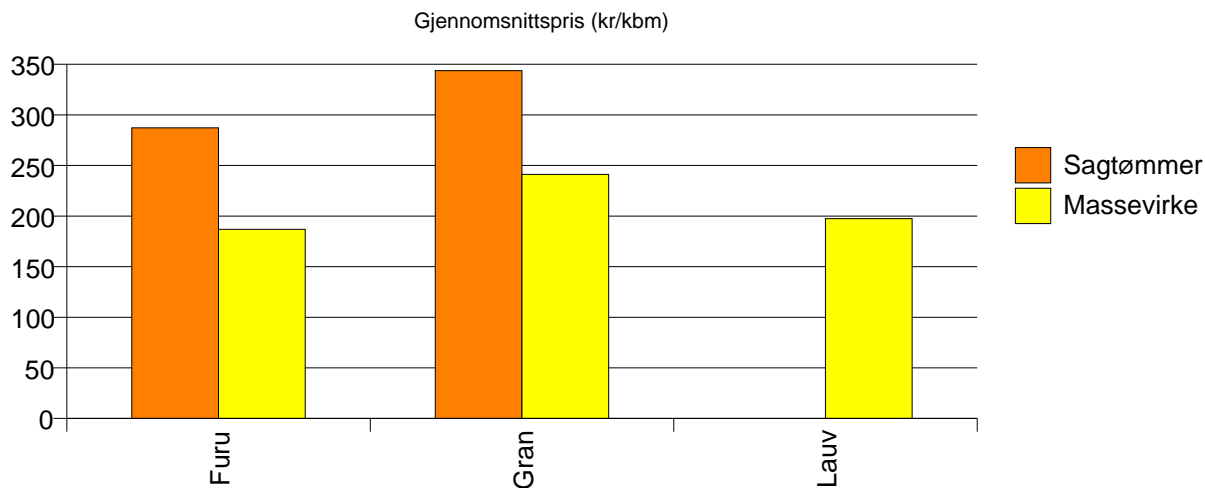
Volum 2002 (kbm)

	Sagtømmer	Massevirke	Vrak	Sum:
Furu	755	240		995
Gran	15 465	13 029	246	28 740
Lauv		17		17
Sum:	16 220	13 286	246	29 752



Gjennomsnittspris 2002 (kr/kbm)

	Sagtømmer	Massevirke	Vrak	Snitt
Furu	287	187		263
Gran	344	241	0	294
Lauv		198		198
Snitt	341	240	0	293

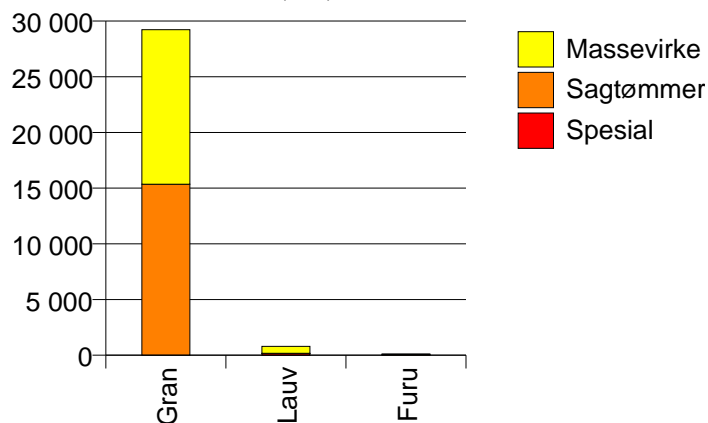


# 1721 VERDAL

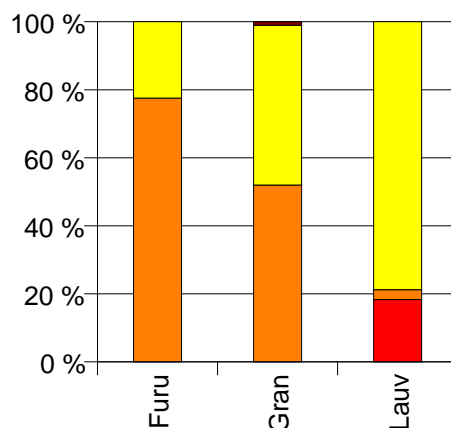
## Volum 2002 (kbm)

	Spesial	Sagtømmer	Massevirke	Vrak	Sum:
Furu		83	24		107
Gran		15 356	13 869	313	29 538
Lauv	145	23	624		792
Sum:	145	15 462	14 517	313	30 437

Volum (kbm)



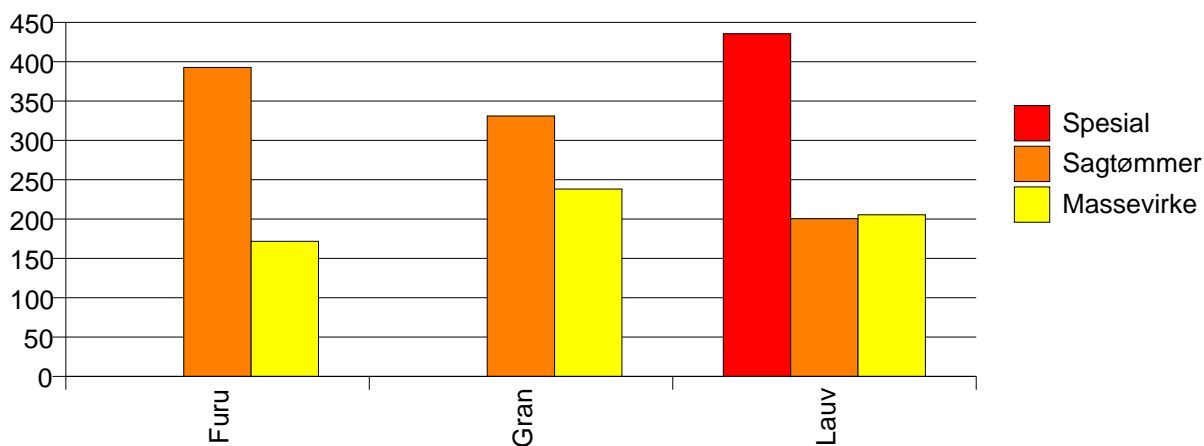
Volum (prosentfordelt)



## Gjennomsnittspris 2002 (kr/kbm)

	Spesial	Sagtømmer	Massevirke	Vrak	Snitt
Furu		393	172		343
Gran		331	238	0	284
Lauv	435	200	205		247
Snitt	435	331	237	0	283

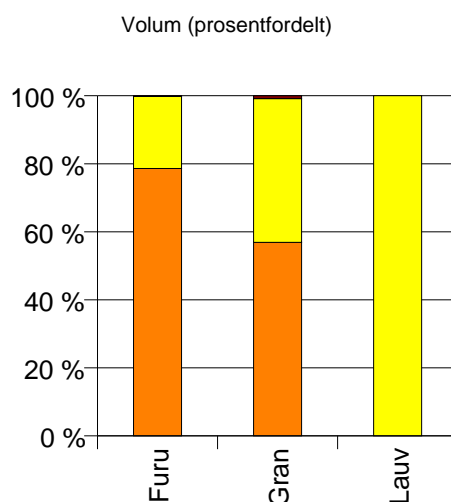
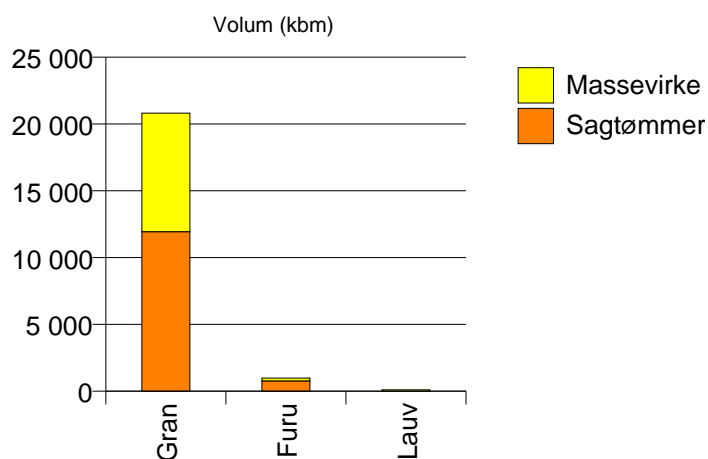
Gjennomsnittspris (kr/kbm)



# 1723 MOSVIK

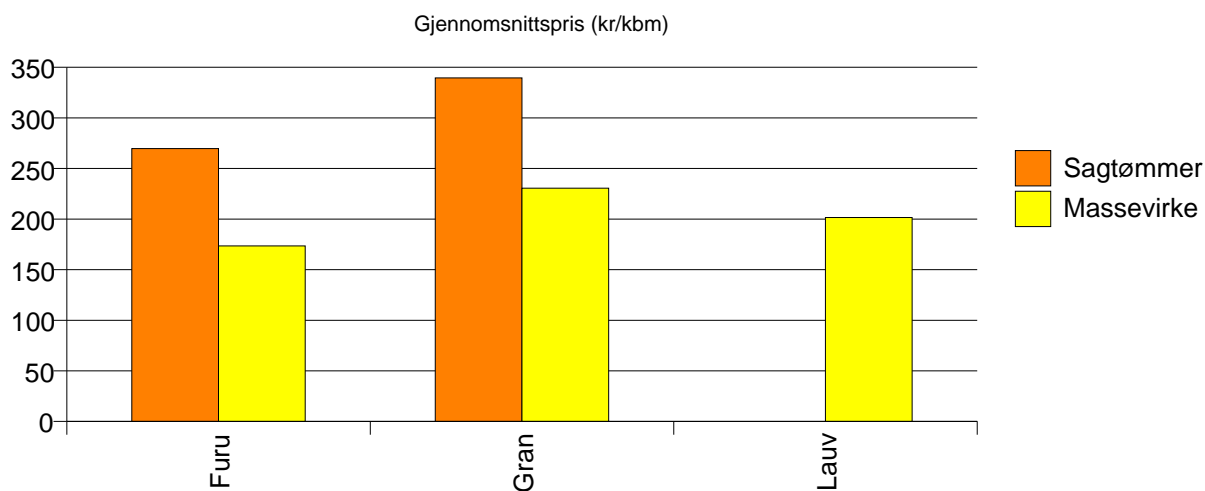
Volum 2002 (kbm)

	Sagtømmer	Massevirke	Vrak	Sum:
Furu	775	209	2	986
Gran	11 933	8 868	176	20 977
Lauv		104		104
Sum:	12 708	9 181	178	22 067



Gjennomsnittspris 2002 (kr/kbm)

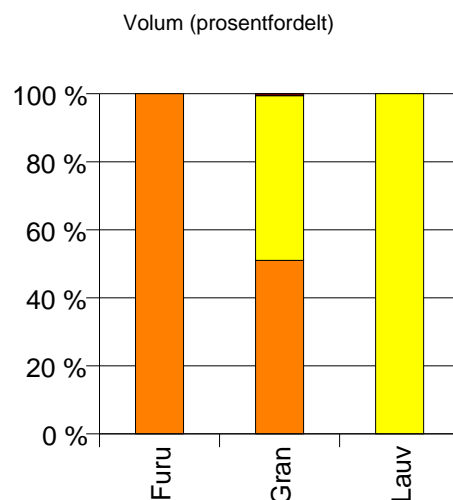
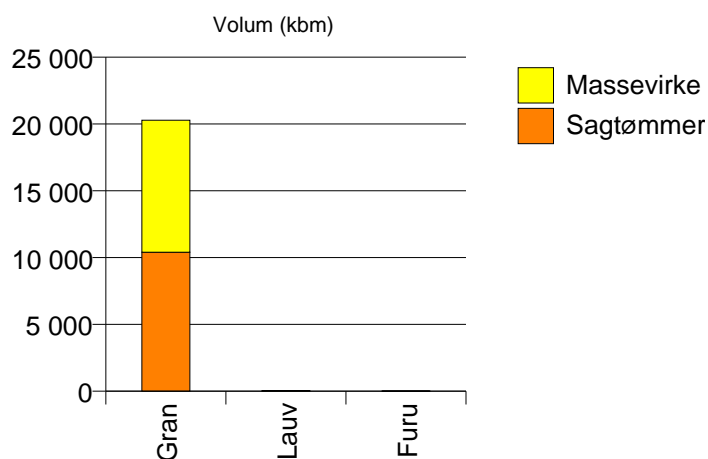
	Sagtømmer	Massevirke	Vrak	Snitt
Furu	270	173	0	249
Gran	340	231	0	291
Lauv		202		202
Snitt	335	229	0	288



# 1724 VERRAN

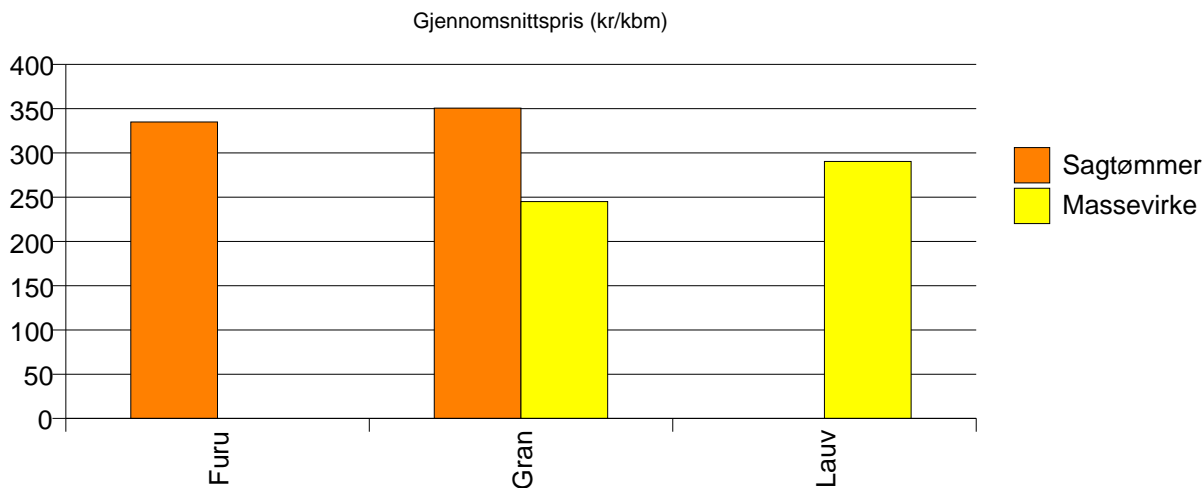
Volum 2002 (kbm)

	Sagtømmer	Massevirke	Vrak	Sum:
Furu	16			16
Gran	10 399	9 877	112	20 388
Lauv		45		45
Sum:	10 415	9 922	112	20 449



Gjennomsnittspris 2002 (kr/kbm)

	Sagtømmer	Massevirke	Vrak	Snitt
Furu	335			335
Gran	351	245	0	297
Lauv		290		290
Snitt	350	245	0	297

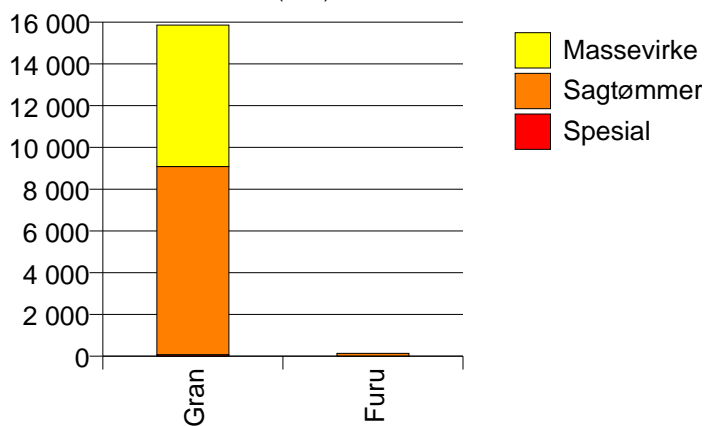


## 1725 NAMDALSEID

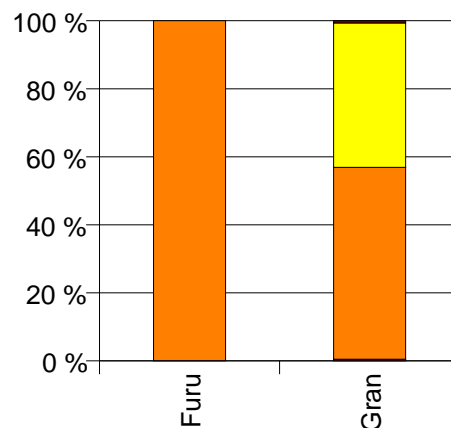
Volum 2002 (kbm)

	Spesial	Sagtømmer	Massevirke	Vrak	Sum:
Furu		140			140
Gran	76	9 004	6 775	106	15 961
Sum:	76	9 144	6 775	106	16 101

Volum (kbm)



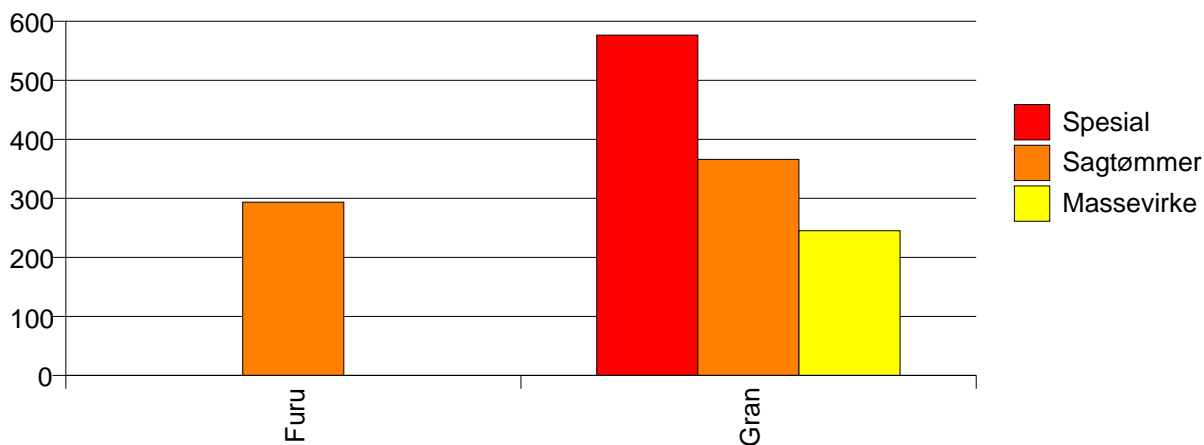
Volum (prosentfordelt)



Gjennomsnittspris 2002 (kr/kbm)

	Spesial	Sagtømmer	Massevirke	Vrak	Snitt
Furu		294			294
Gran	577	366	245	0	313
Snitt	577	365	245	0	313

Gjennomsnittspris (kr/kbm)

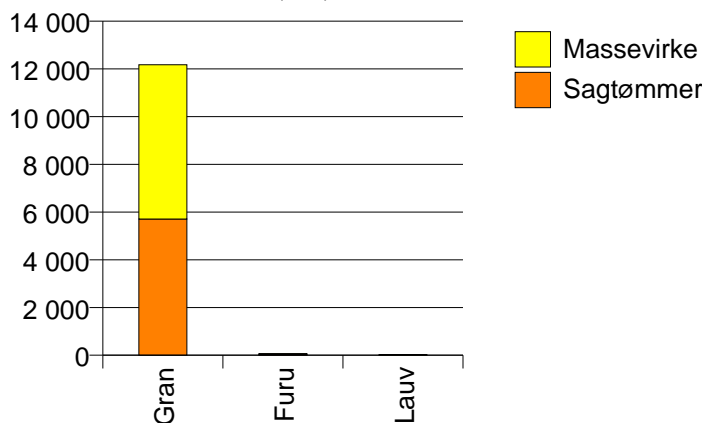


## 1729 INDERØY

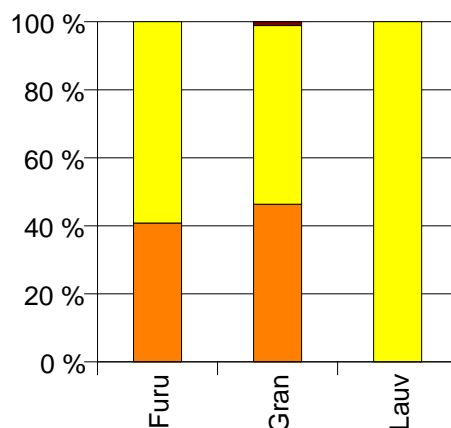
Volum 2002 (kbm)

	Sagtømmer	Massevirke	Vrak	Sum:
Furu	29	42		71
Gran	5 706	6 465	136	12 307
Lauv		24		24
Sum:	5 735	6 531	136	12 402

Volum (kbm)



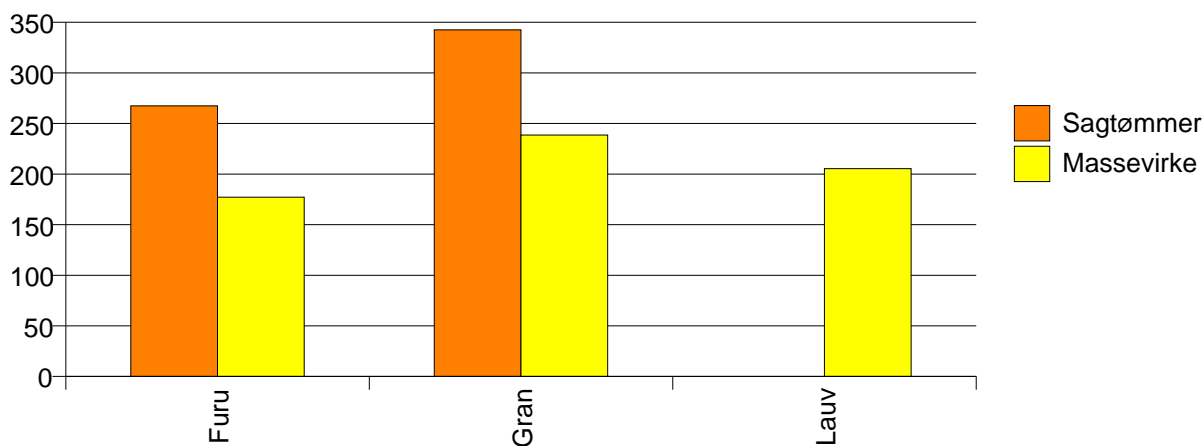
Volum (prosentfordelt)



Gjennomsnittspris 2002 (kr/kbm)

	Sagtømmer	Massevirke	Vrak	Snitt
Furu	267	177		214
Gran	343	239	0	284
Lauv		205		205
Snitt	342	238	0	284

Gjennomsnittspris (kr/kbm)

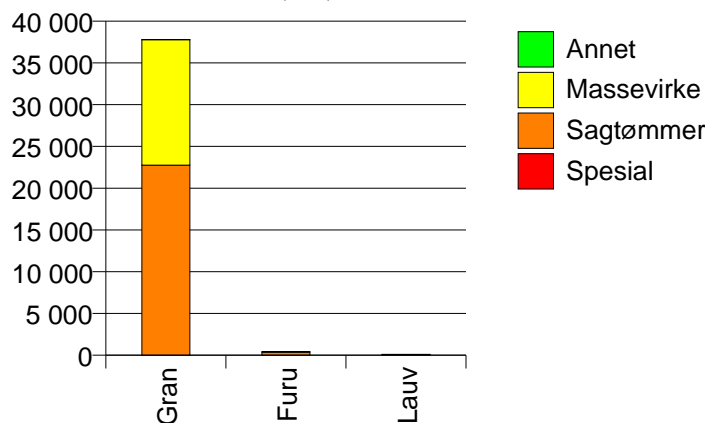


# 1736 SNÅSA

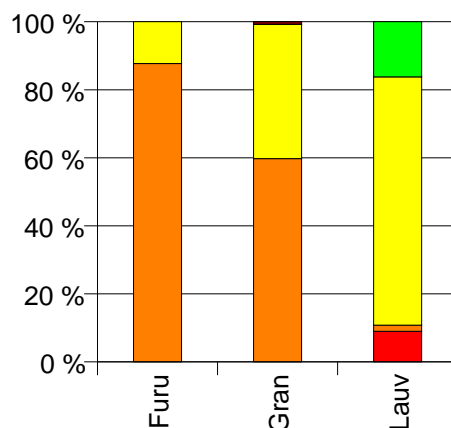
Volum 2002 (kbm)

	Spesial	Sagtømmer	Massevirke	Annet	Vrak	Sum:
Furu		371	52			423
Gran		22 752	15 023	8	291	38 074
Lauv	10	2	81	18		111
Sum:	10	23 125	15 156	26	291	38 608

Volum (kbm)



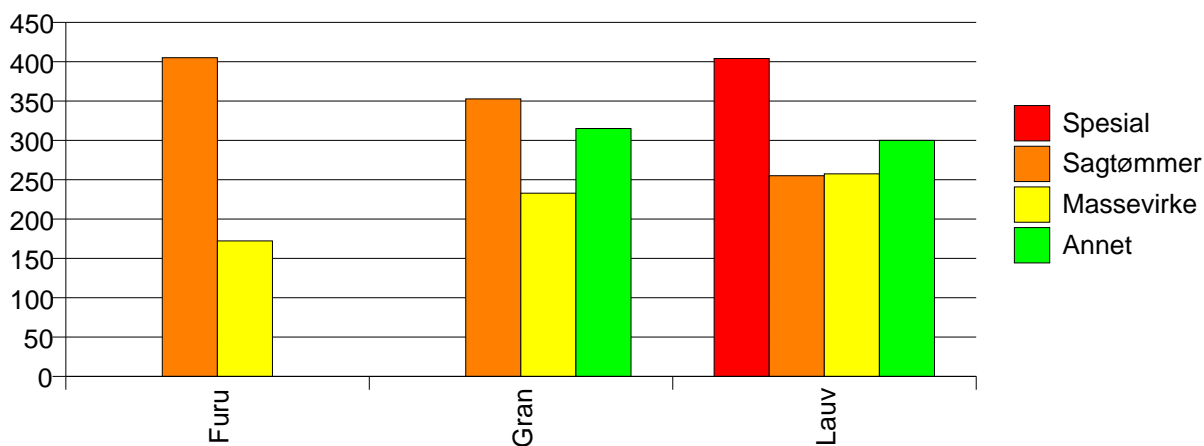
Volum (prosentfordelt)



Gjennomsnittspris 2002 (kr/kbm)

	Spesial	Sagtømmer	Massevirke	Annet	Vrak	Snitt
Furu		405	172			376
Gran		353	233	315	0	303
Lauv	404	255	257	300		277
Snitt	404	354	233	305	0	303

Gjennomsnittspris (kr/kbm)

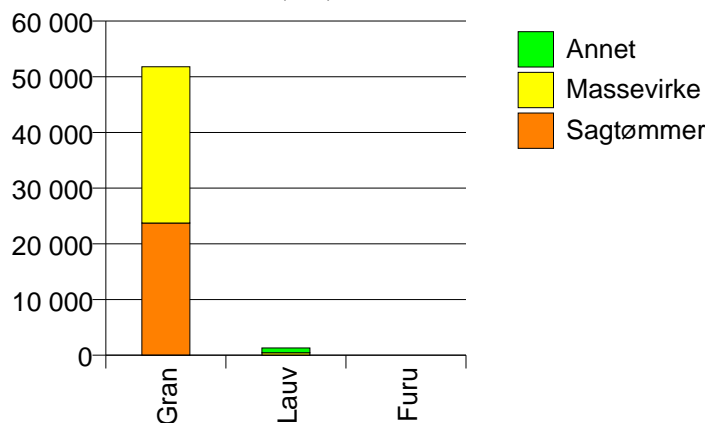


# 1738 LIERNE

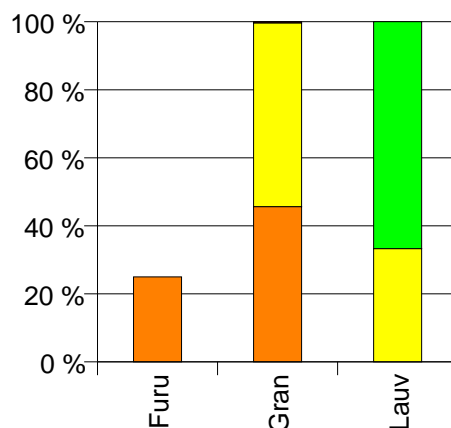
## Volum 2002 (kbm)

	Sagtømmer	Massevirke	Annet	Vrak	Sum:
Furu	0				0
Gran	23 736	28 073		170	51 979
Lauv		431	863		1 294
Sum:	23 736	28 504	863	170	53 273

Volum (kbm)



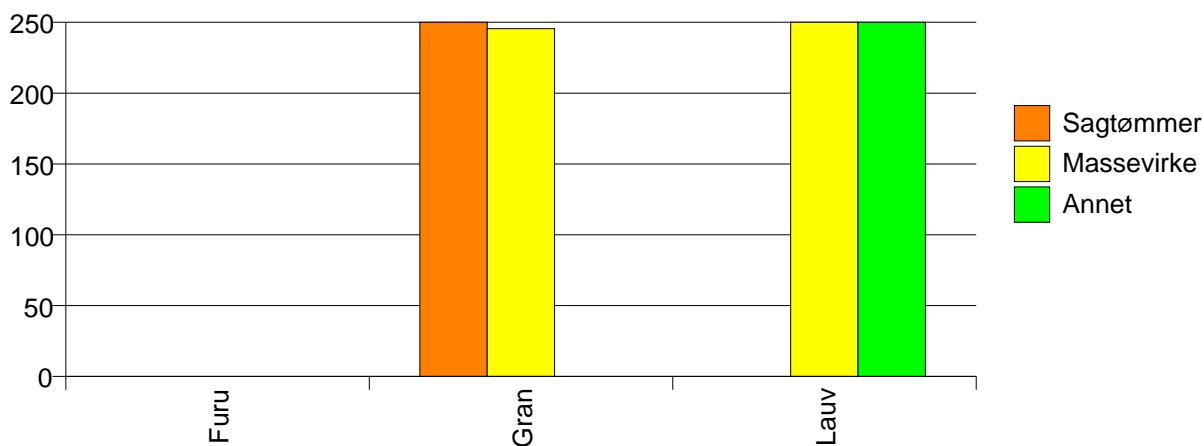
Volum (prosentfordelt)



## Gjennomsnittspris 2002 (kr/kbm)

	Sagtømmer	Massevirke	Annet	Vrak	Snitt
Furu	#DIV/0				#DIV/0
Gran	358	245		0	296
Lauv		304	300		301
Snitt	358	246	300	0	296

Gjennomsnittspris (kr/kbm)



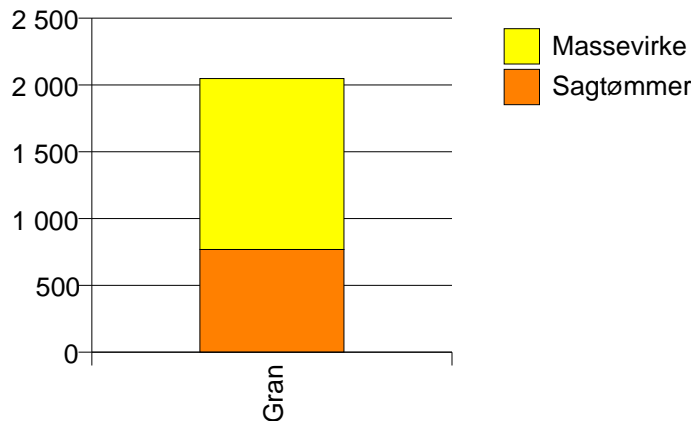


## 1739 RØYRVIK

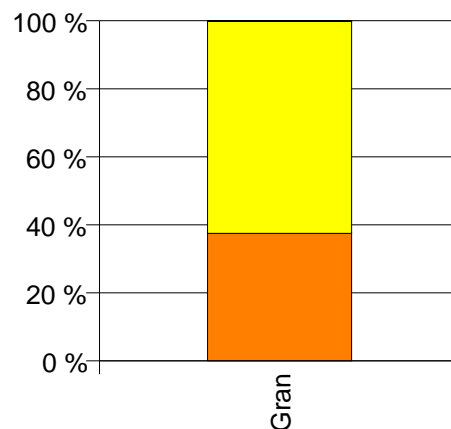
Volum 2002 (kbm)

	Sagtømmer	Massevirke	Vrak	Sum:
Gran	769	1 279	4	2 052
Sum:	769	1 279	4	2 052

Volum (kbm)



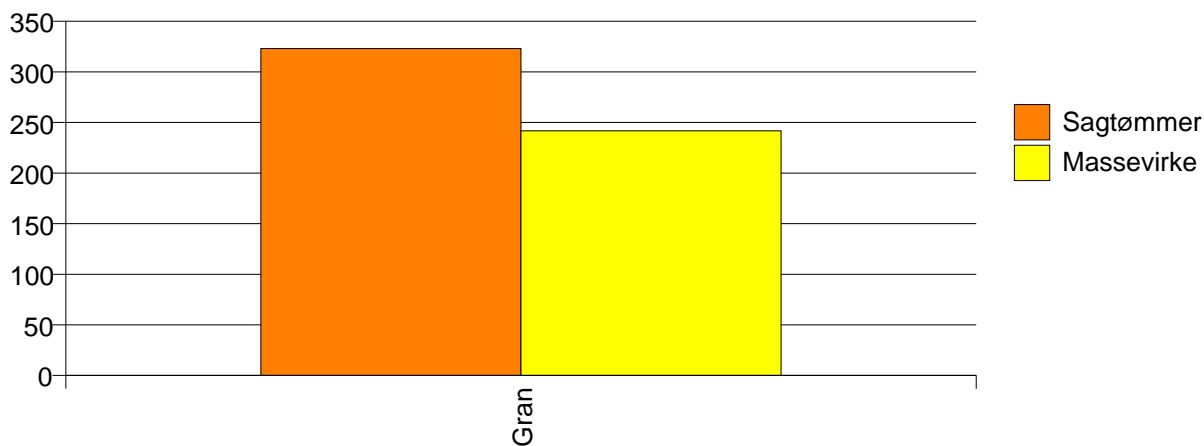
Volum (prosentfordelt)



Gjennomsnittspris 2002 (kr/kbm)

Gran	323	242	0	272
Snitt	323	242	0	272

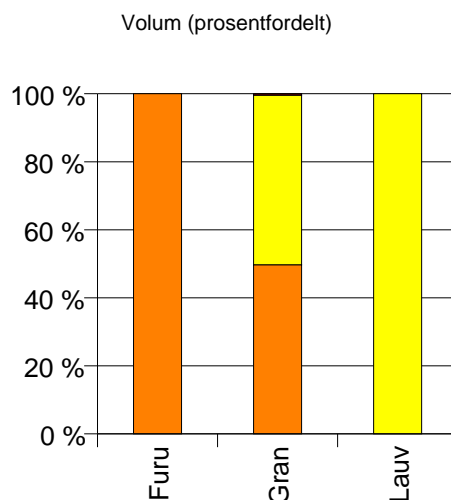
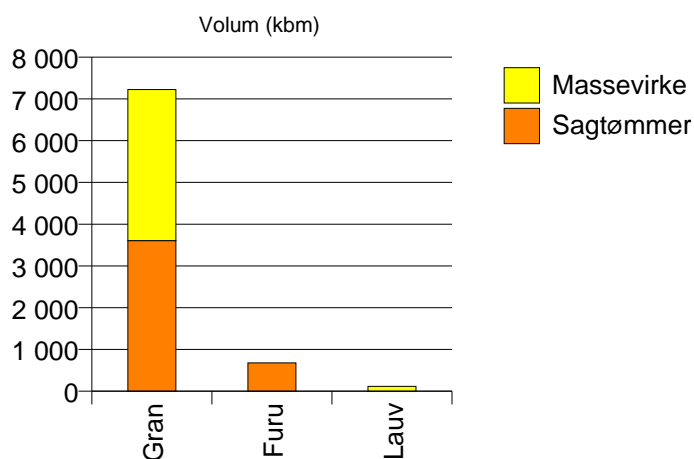
Gjennomsnittspris (kr/kbm)



# 1740 NAMSSKOGAN

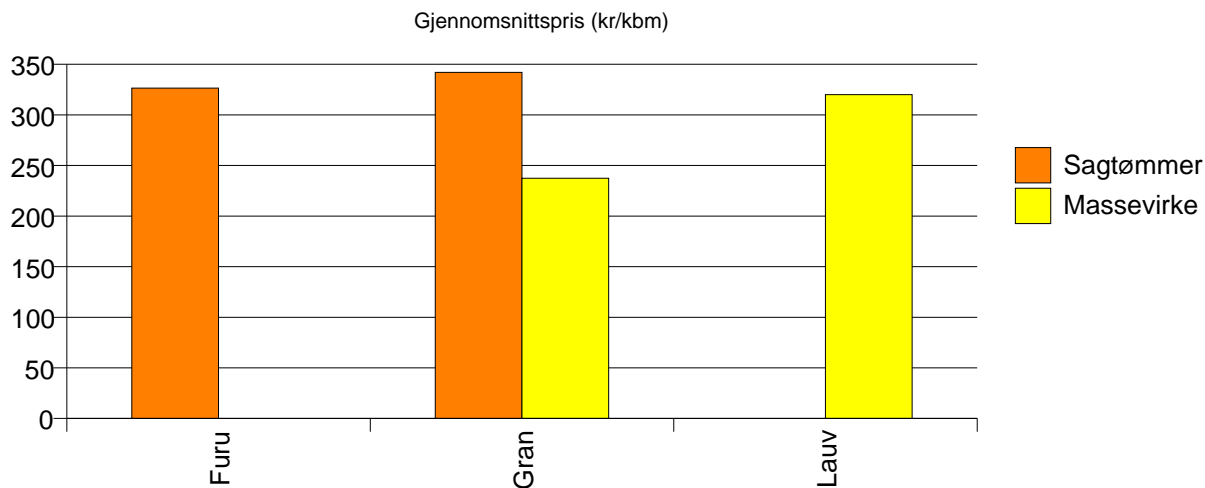
Volum 2002 (kbm)

	Sagtømmer	Massevirke	Vrak	Sum:
Furu	677			677
Gran	3 605	3 618	29	7 252
Lauv		115		115
Sum:	4 282	3 733	29	8 044



Gjennomsnittspris 2002 (kr/kbm)

	Sagtømmer	Massevirke	Vrak	Snitt
Furu	326			326
Gran	342	237	0	289
Lauv		320		320
Snitt	340	240	0	292

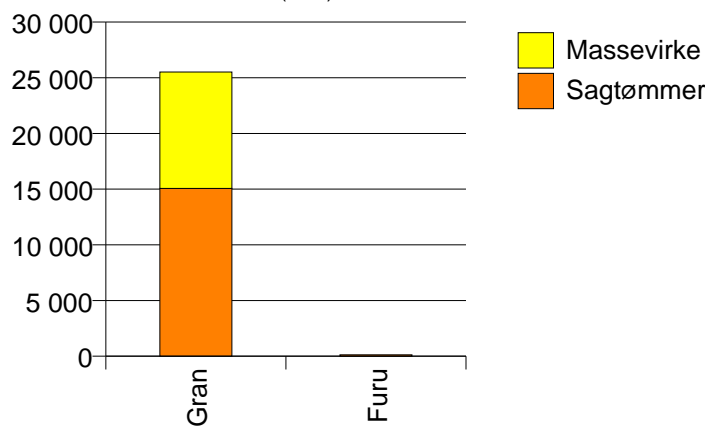


# 1742 GRONG

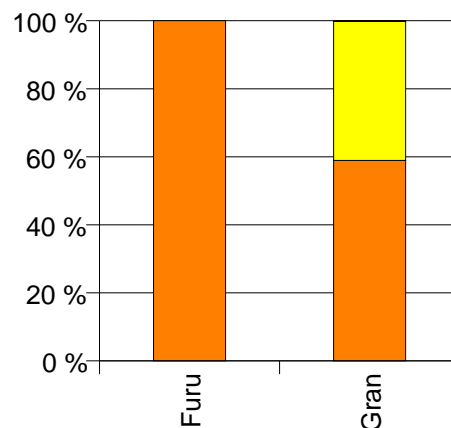
Volum 2002 (kbm)

	Sagtømmer	Massevirke	Vrak	Sum:
Furu	124			124
Gran	15 070	10 445	58	25 573
Sum:	15 194	10 445	58	25 697

Volum (kbm)



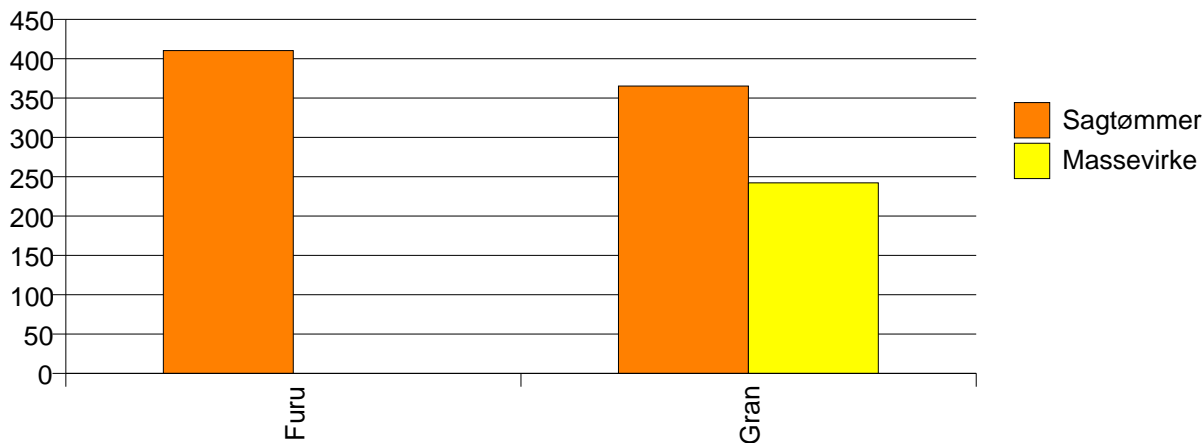
Volum (prosentfordelt)



Gjennomsnittspris 2002 (kr/kbm)

	Sagtømmer	Massevirke	Vrak	Snitt
Furu	410			410
Gran	365	242	0	314
Snitt	366	242	0	315

Gjennomsnittspris (kr/kbm)

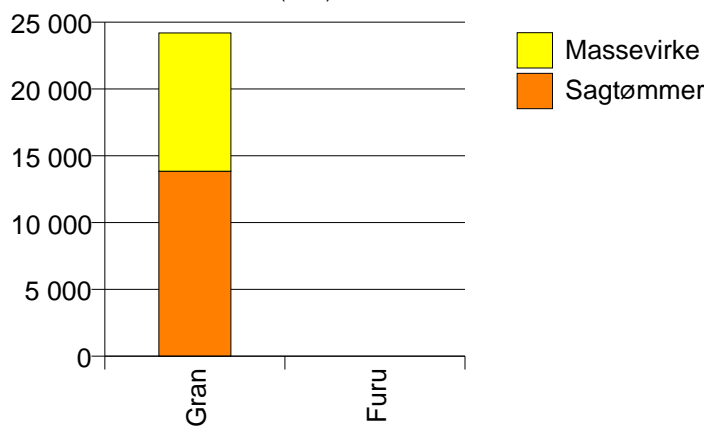


## 1743 HØYLANDET

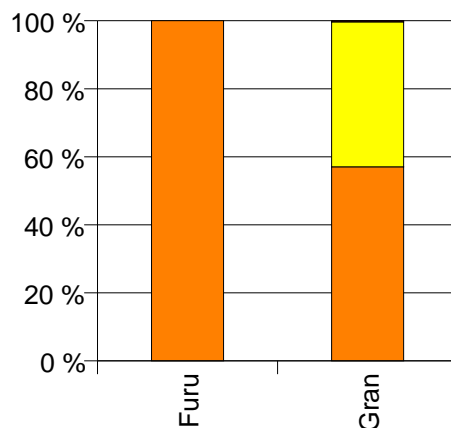
Volum 2002 (kbm)

	Sagtømmer	Massevirke	Vrak	Sum:
Furu	8			8
Gran	13 841	10 342	80	24 263
Sum:	13 849	10 342	80	24 271

Volum (kbm)



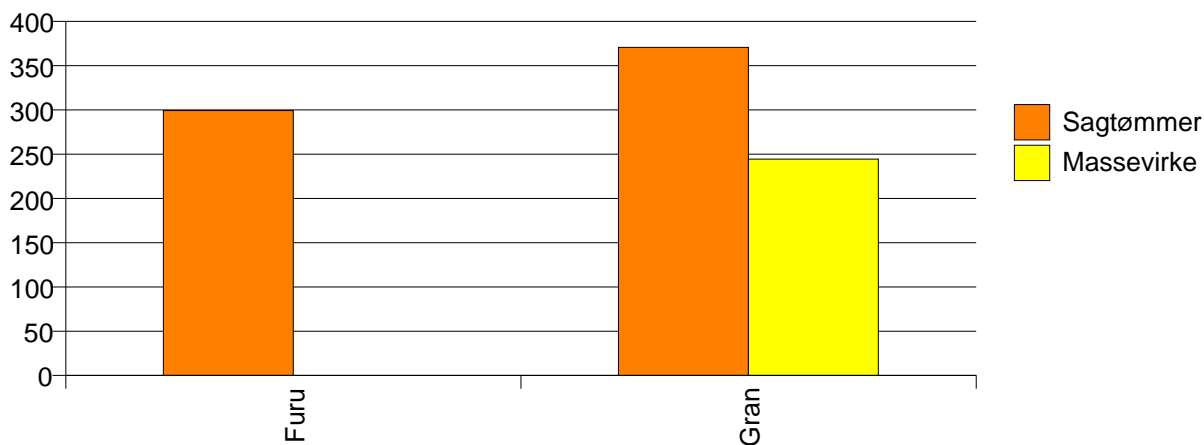
Volum (prosentfordelt)



Gjennomsnittspris 2002 (kr/kbm)

	Sagtømmer	Massevirke	Vrak	Snitt
Furu	299			299
Gran	371	244	0	316
Snitt	371	244	0	316

Gjennomsnittspris (kr/kbm)

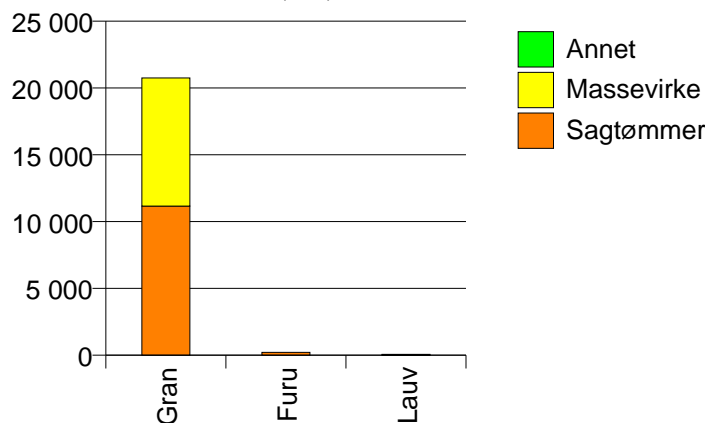


# 1744 OVERHALLA

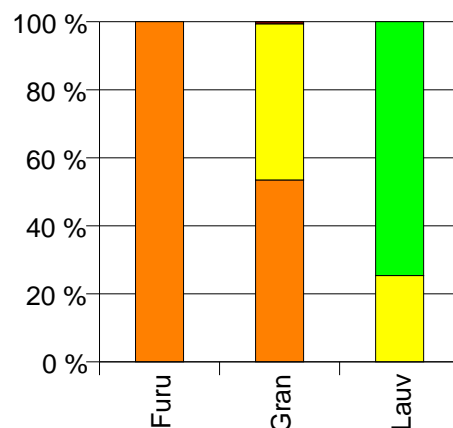
Volum 2002 (kbm)

	Sagtømmer	Massevirke	Annet	Vrak	Sum:
Furu	216				216
Gran	11 160	9 586		123	20 869
Lauv		17	50		67
Sum:	11 376	9 603	50	123	21 152

Volum (kbm)



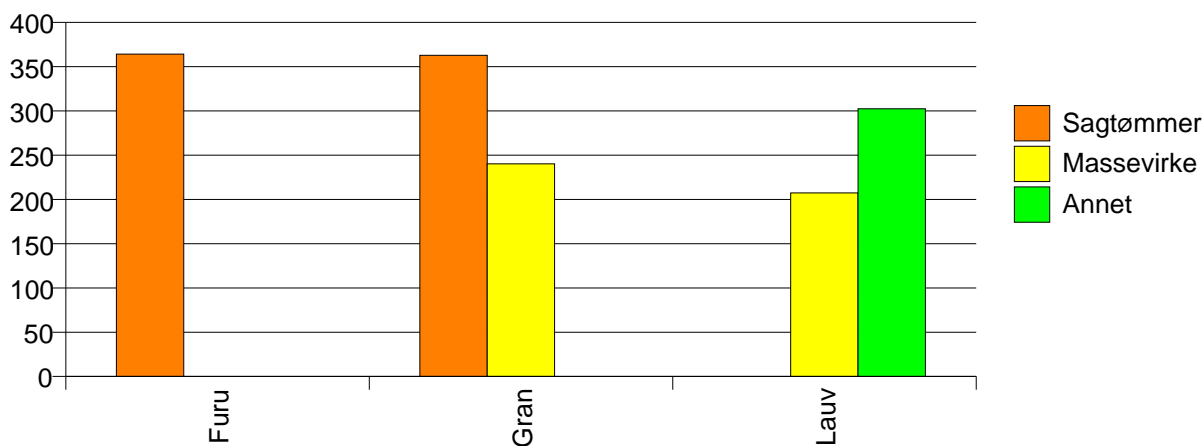
Volum (prosentfordelt)



Gjennomsnittspris 2002 (kr/kbm)

	Sagtømmer	Massevirke	Annet	Vrak	Snitt
Furu	364				364
Gran	363	240		0	304
Lauv		207	302		278
Snitt	363	240	302	0	305

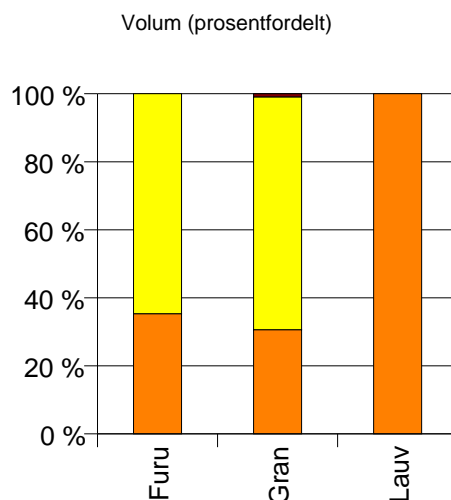
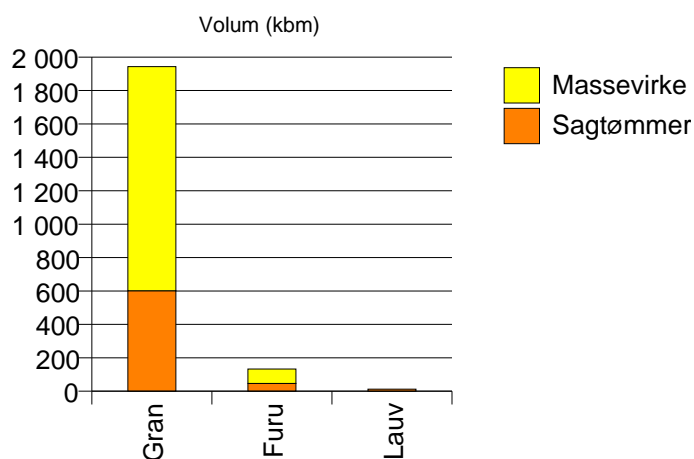
Gjennomsnittspris (kr/kbm)



## 1748 FOSNES

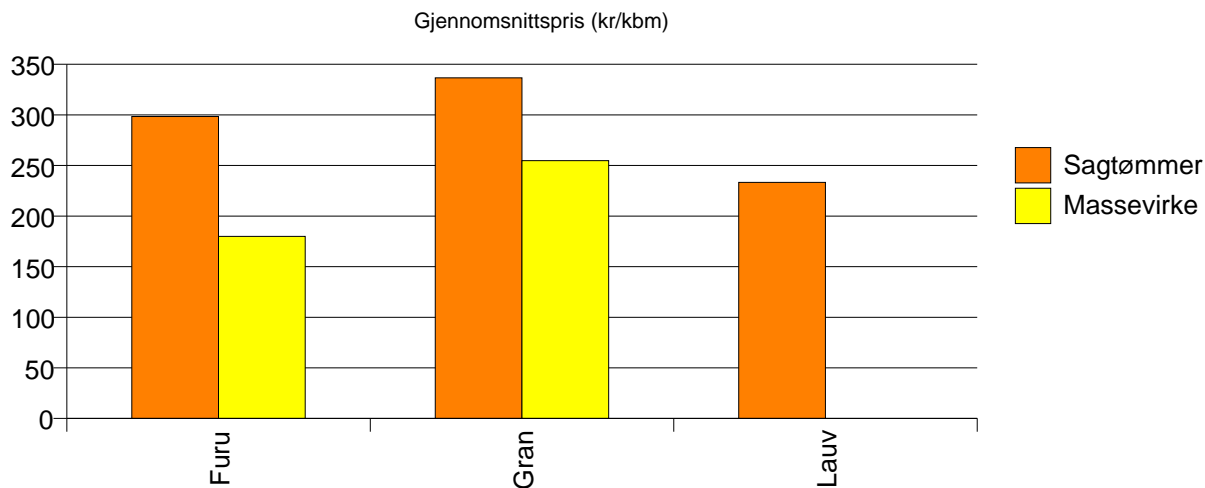
Volum 2002 (kbm)

	Sagtømmer	Massevirke	Vrak	Sum:
Furu	47	86		133
Gran	601	1 342	18	1 961
Lauv	12			12
Sum:	660	1 428	18	2 106



Gjennomsnittspris 2002 (kr/kbm)

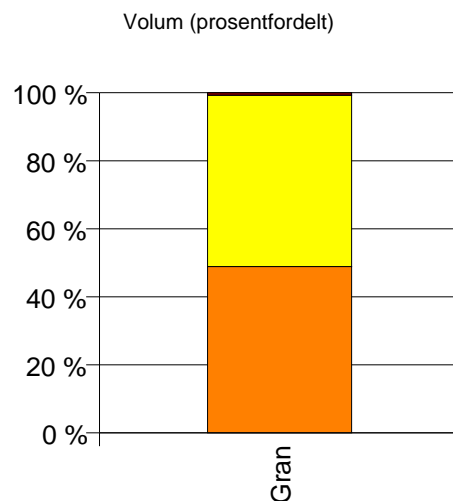
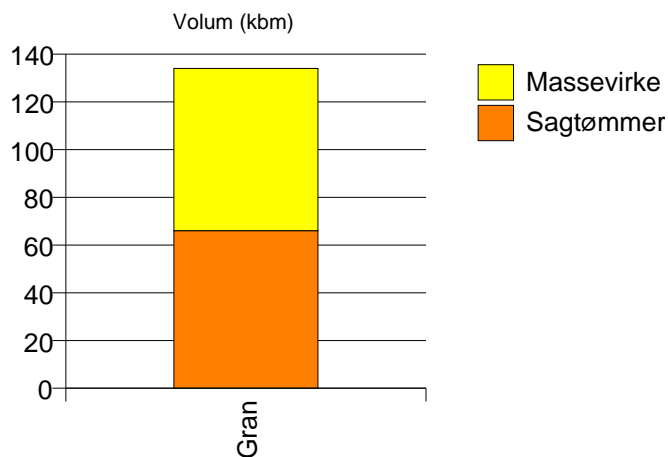
	Sagtømmer	Massevirke	Vrak	Snitt
Furu	298	180		222
Gran	337	255	0	277
Lauv	233			233
Snitt	332	250	0	274



## 1749 FLATANGER

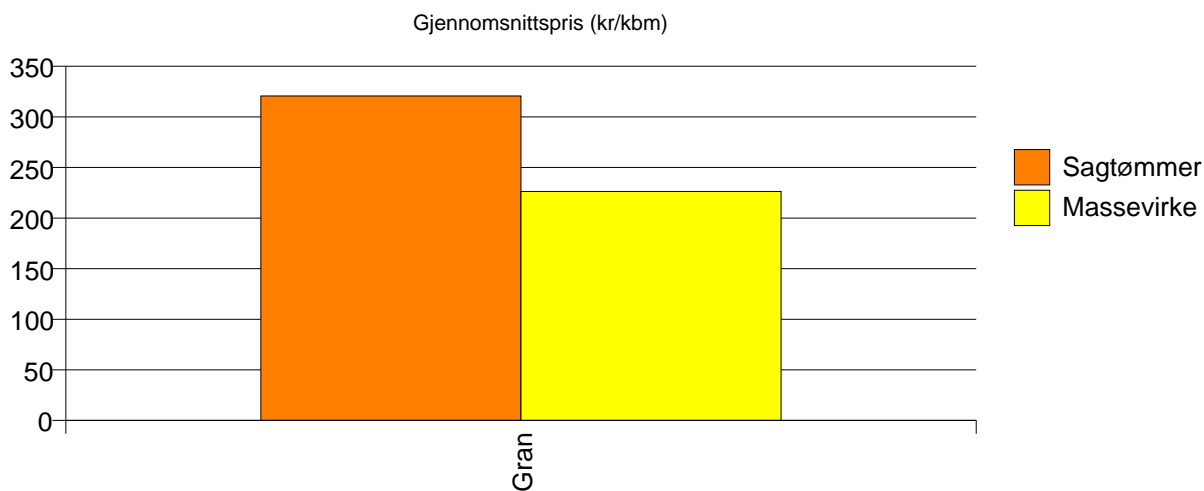
Volum 2002 (kbm)

	Sagtømmer	Massevirke	Vrak	Sum:
Gran	66	68	1	135
Sum:	66	68	1	135



Gjennomsnittspris 2002 (kr/kbm)

Gran	321	226	0	271
Snitt	321	226	0	271

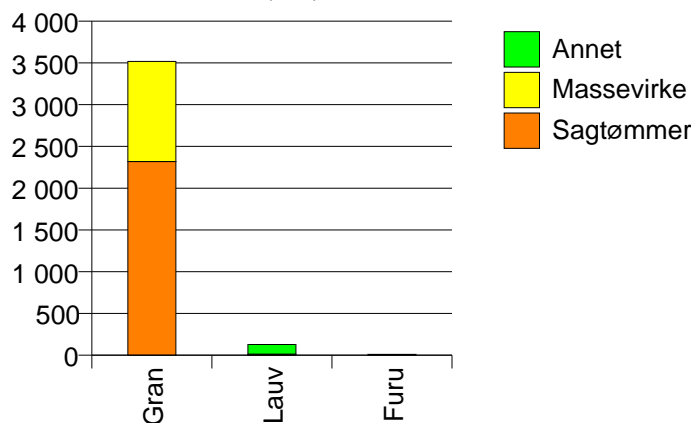


# 1751 NÆRØY

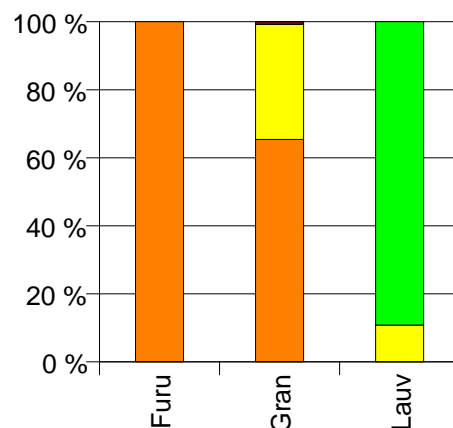
## Volum 2002 (kbm)

	Sagtømmer	Massevirke	Annet	Vrak	Sum:
Furu	10				10
Gran	2 319	1 198		28	3 545
Lauv		14	115		129
Sum:	2 329	1 212	115	28	3 684

Volum (kbm)



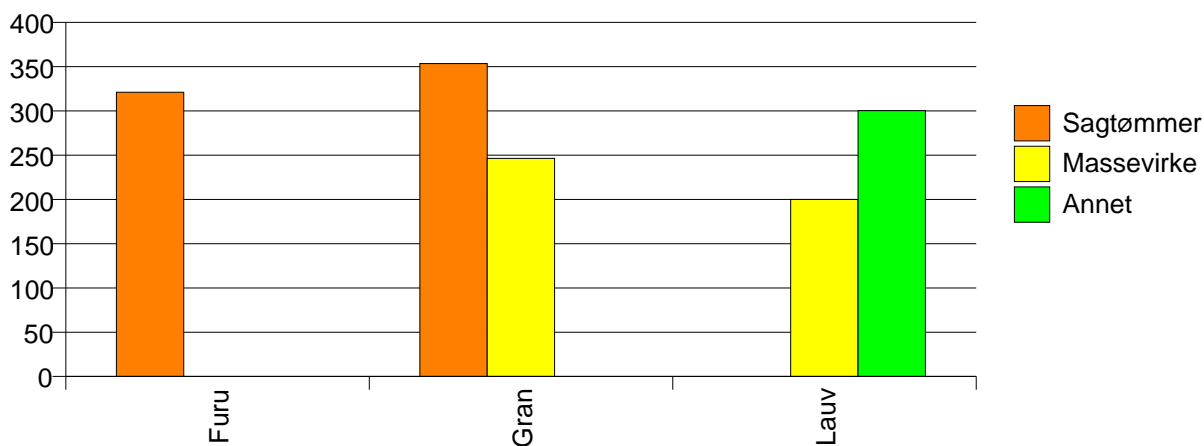
Volum (prosentfordelt)



## Gjennomsnittspris 2002 (kr/kbm)

	Sagtømmer	Massevirke	Annet	Vrak	Snitt
Furu	321				321
Gran	353	246		0	314
Lauv		200	300		289
Snitt	353	246	300	0	314

Gjennomsnittspris (kr/kbm)

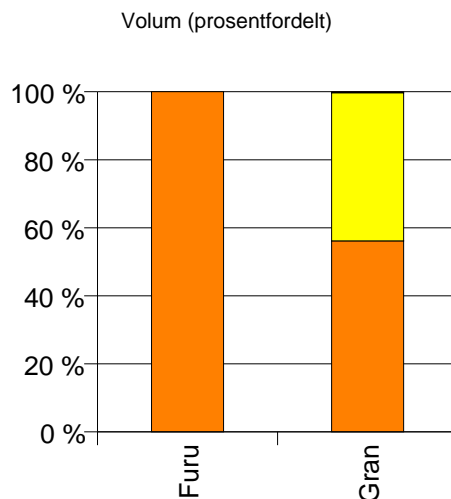
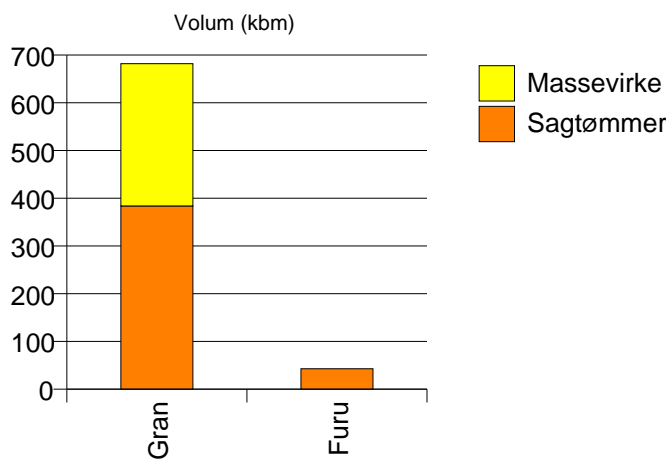




# 1755 LEKA

## Volum 2002 (kbm)

	Sagtømmer	Massevirke	Vrak	Sum:
Furu	43			43
Gran	384	298	2	684
Sum:	427	298	2	727



## Gjennomsnittspris 2002 (kr/kbm)

	Sagtømmer	Massevirke	Vrak	Snitt
Furu	287			287
Gran	338	243	0	295
Snitt	333	243	0	295

