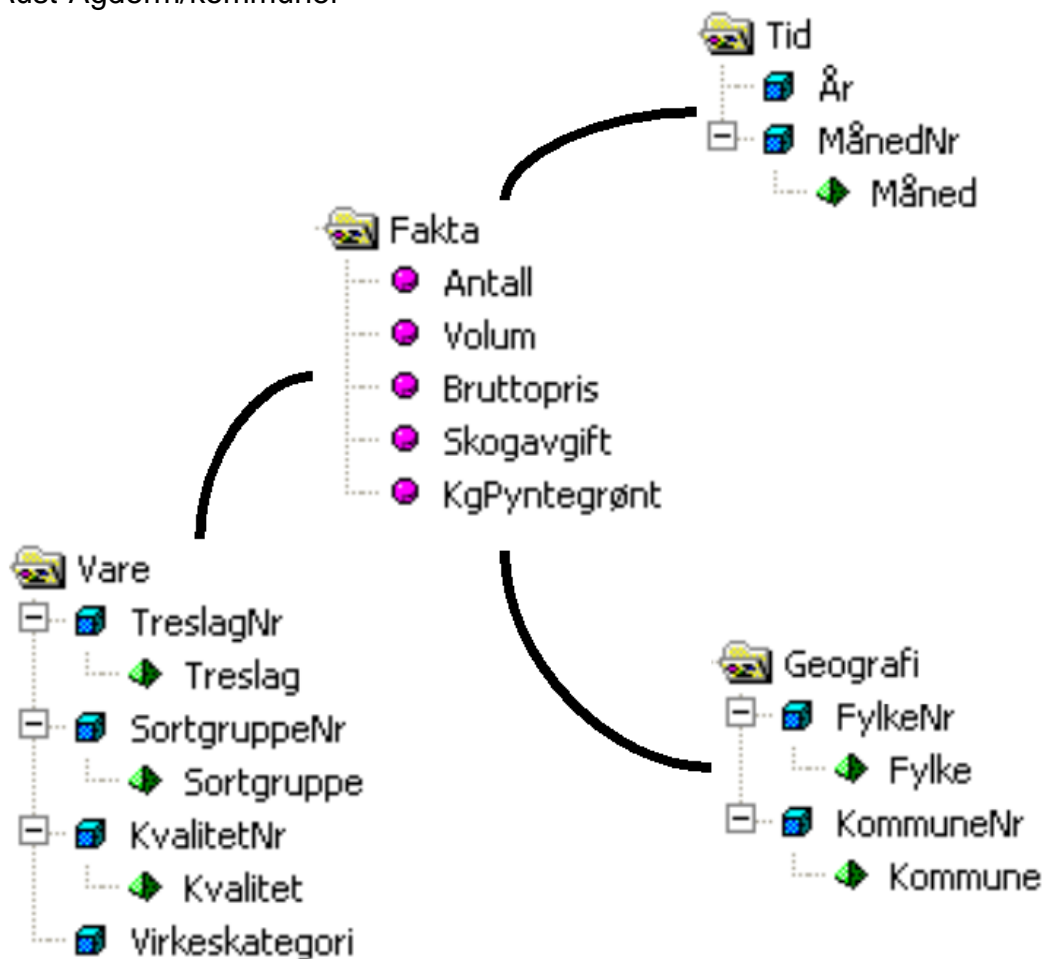




Virkestatistikk fra SKOG-DATA AS

Aust-Agderm/kommuner



Dataene i rapporten er hentet fra databasen som inneholder virkesdata med tilhørende innbetalinger av skogavgift. Rapporten er laget med Business Objects, som er sluttbrukerverktøyet i Skog-Data sine nye datavarehus-løsninger. Business Objects er ett meget sterkt rapportverktøy som kan presentere store mengder data effektivt.

Rapportene kan lastes ned fra www.skogdata.no/statistikk

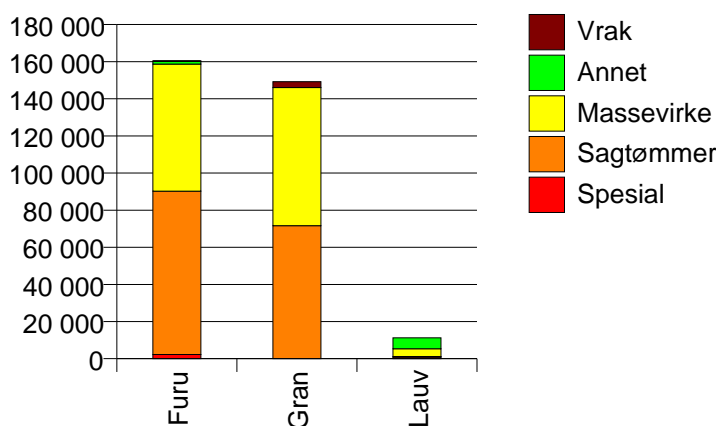
For mer informasjon, kontakt: alexanderh@skogdata.no

Aust-Agder

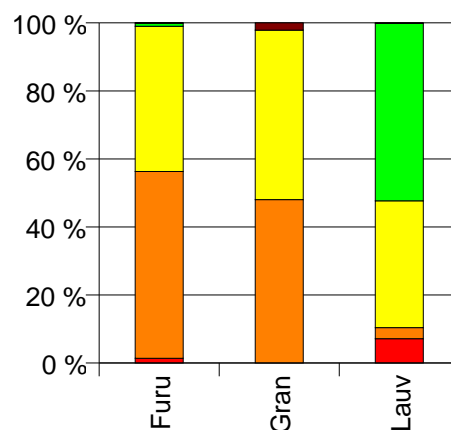
Volum 2002 (kbm)

	Spesial	Sagtømmer	Massevirke	Annet	Vrak	Sum:
Furu	2 248	88 026	68 458	1 517	87	160 336
Gran	12	71 667	74 366		3 184	149 229
Lauv	805	366	4 197	5 877	15	11 260
Sum:	3 065	160 059	147 021	7 394	3 286	320 825

Volum (kbm)



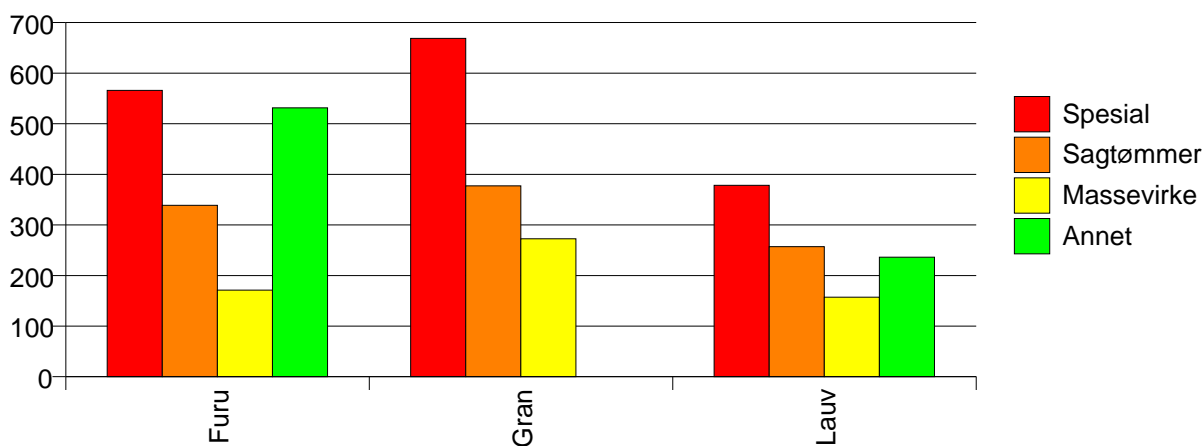
Volum (prosentfordelt)



Gjennomsnittspris 2002 (kr/kbm)

	Spesial	Sagtømmer	Massevirke	Annet	Vrak	Snitt:
Furu	566	339	171	531	0	272
Gran	669	377	273		0	317
Lauv	378	257	157	236	0	217
Snitt:	517	356	222	297	0	291

Gjennomsnittspris (kr/kbm)

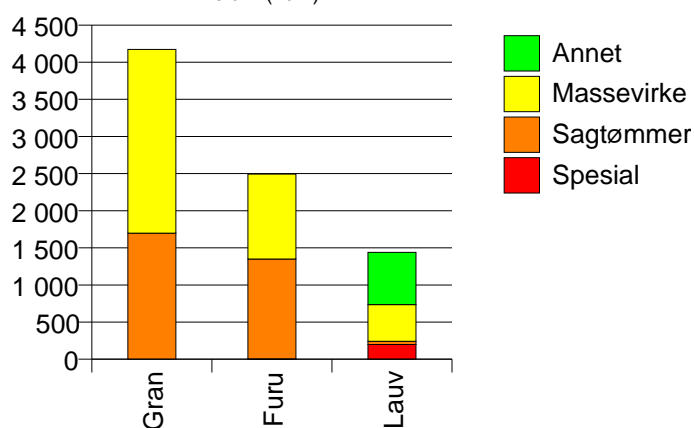


901 RISØR

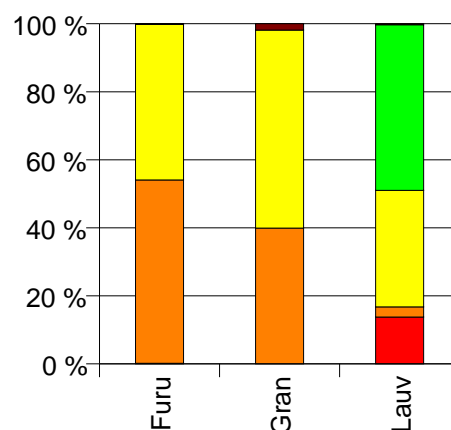
Volum 2002 (kbm)

	Spesial	Sagtømmer	Massevirke	Annet	Vrak	Sum:
Furu	4	1 346	1 143		4	2 497
Gran		1 698	2 475		79	4 252
Lauv	199	43	494	703	4	1 443
Sum:	203	3 087	4 112	703	87	8 192

Volum (kbm)



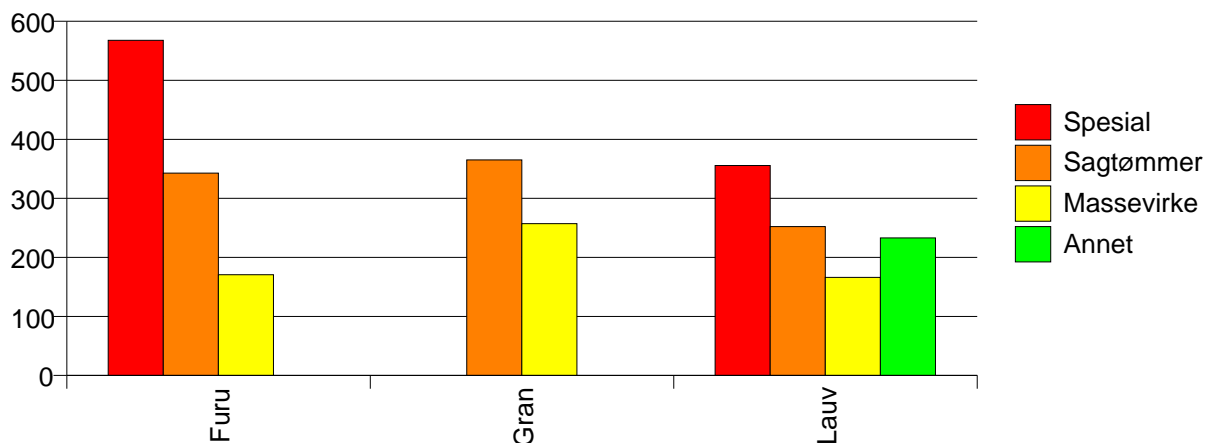
Volum (prosentfordelt)



Gjennomsnittspris 2002 (kr/kbm)

	Spesial	Sagtømmer	Massevirke	Annet	Vrak	Snitt
Furu	568	343	171		0	264
Gran		365	257		0	295
Lauv	356	252	166	233	0	227
Snitt	360	354	222	233	0	274

Gjennomsnittspris (kr/kbm)

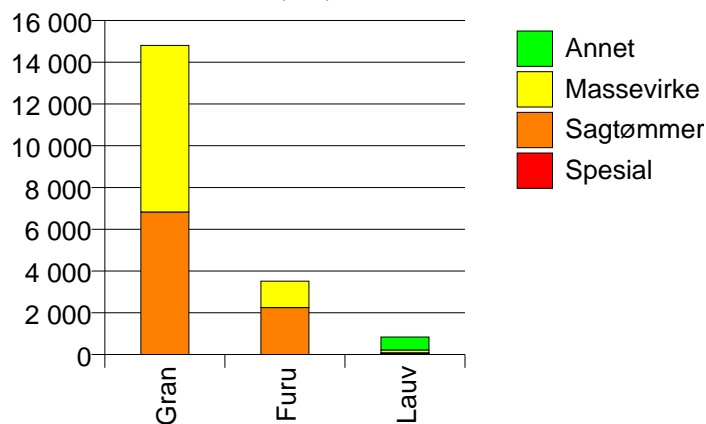


904 GRIMSTAD

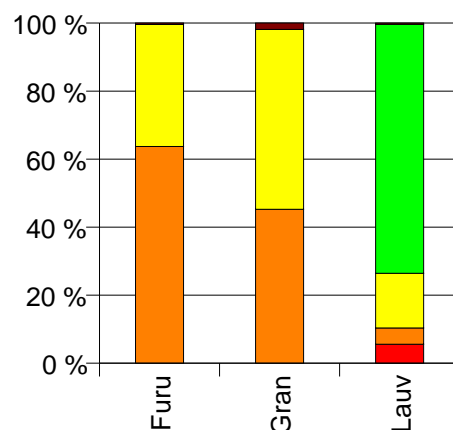
Volum 2002 (kbm)

	Spesial	Sagtømmer	Massevirke	Annet	Vrak	Sum:
Furu		2 251	1 266		15	3 532
Gran		6 830	7 974		283	15 087
Lauv	47	40	135	615	3	840
Sum:	47	9 121	9 375	615	301	19 459

Volum (kbm)



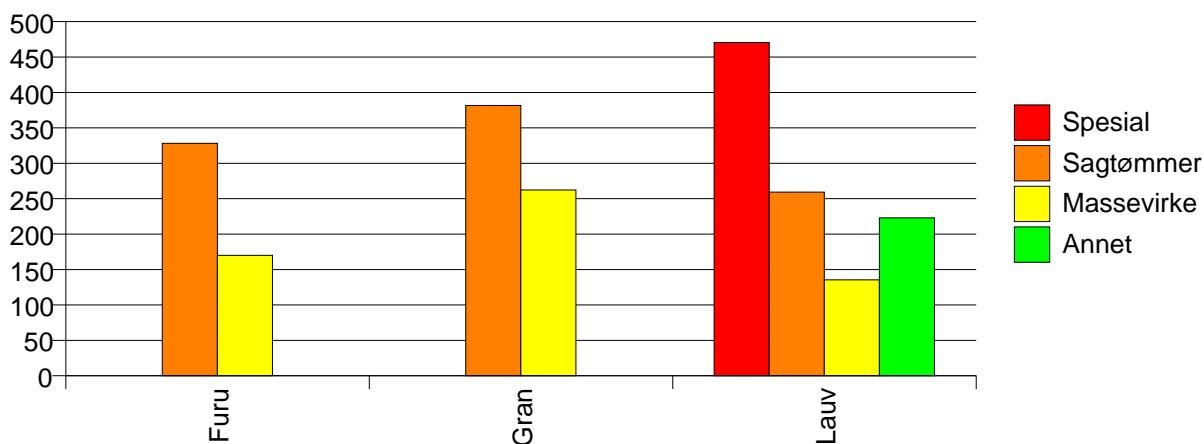
Volum (prosentfordelt)



Gjennomsnittspris 2002 (kr/kbm)

	Spesial	Sagtømmer	Massevirke	Annet	Vrak	Snitt
Furu		328	170		0	270
Gran		382	262		0	311
Lauv	470	259	135	223	0	224
Snitt	470	368	248	223	0	300

Gjennomsnittspris (kr/kbm)

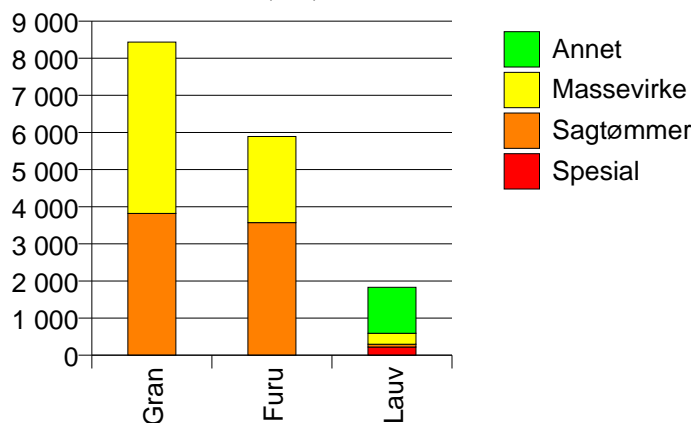


906 ARENDAL

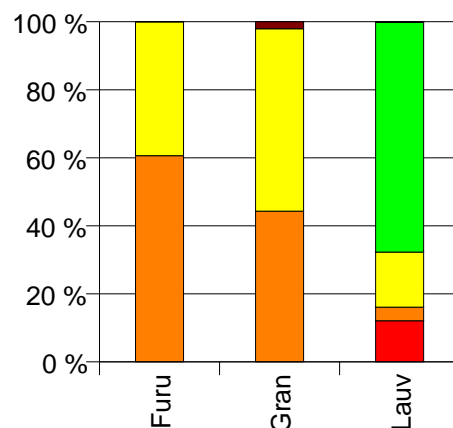
Volum 2002 (kbm)

	Spesial	Sagtømmer	Massevirke	Annet	Vrak	Sum:
Furu		3 573	2 319		2	5 894
Gran		3 818	4 617		177	8 612
Lauv	222	73	297	1 239	3	1 834
Sum:	222	7 464	7 233	1 239	182	16 340

Volum (kbm)



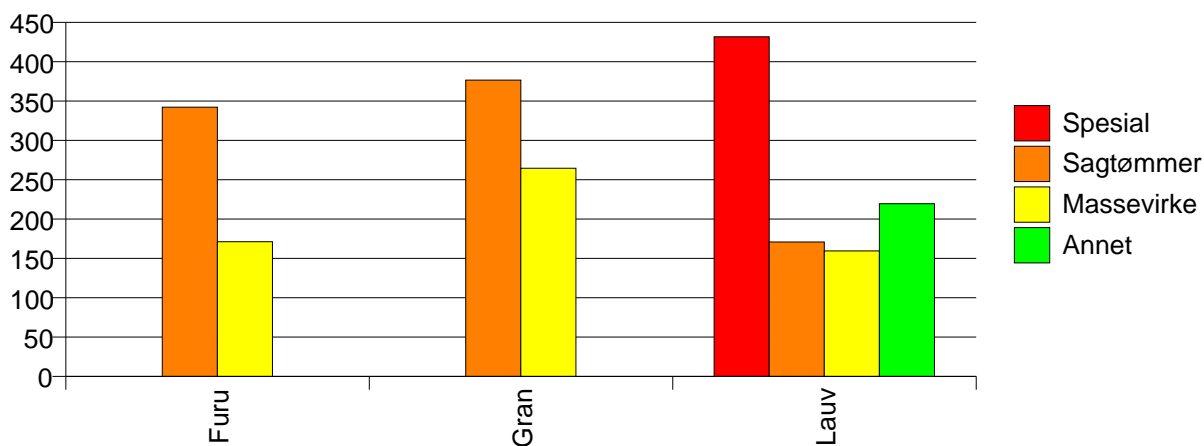
Volum (prosentfordelt)



Gjennomsnittspris 2002 (kr/kbm)

	Spesial	Sagtømmer	Massevirke	Annet	Vrak	Snitt
Furu		342	171		0	275
Gran		377	264		0	309
Lauv	432	171	159	219	0	233
Snitt	432	358	230	219	0	288

Gjennomsnittspris (kr/kbm)

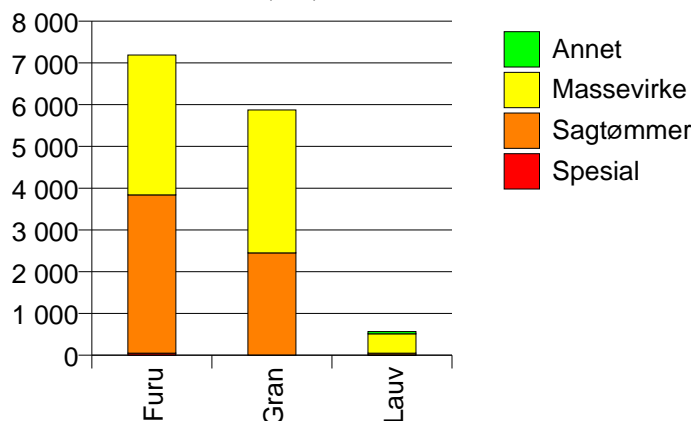


911 GJERSTAD

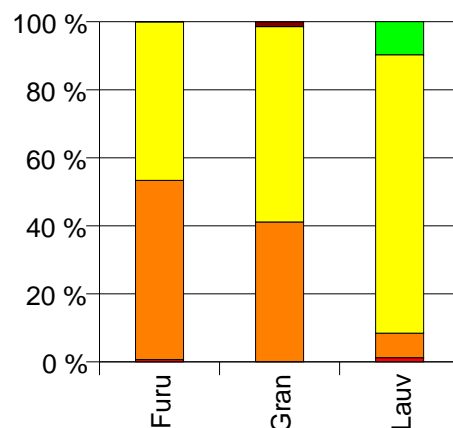
Volum 2002 (kbm)

	Spesial	Sagtømmer	Massevirke	Annet	Vrak	Sum:
Furu	49	3 789	3 350		1	7 189
Gran		2 450	3 421		85	5 956
Lauv	7	41	464	55		567
Sum:	56	6 280	7 235	55	86	13 712

Volum (kbm)



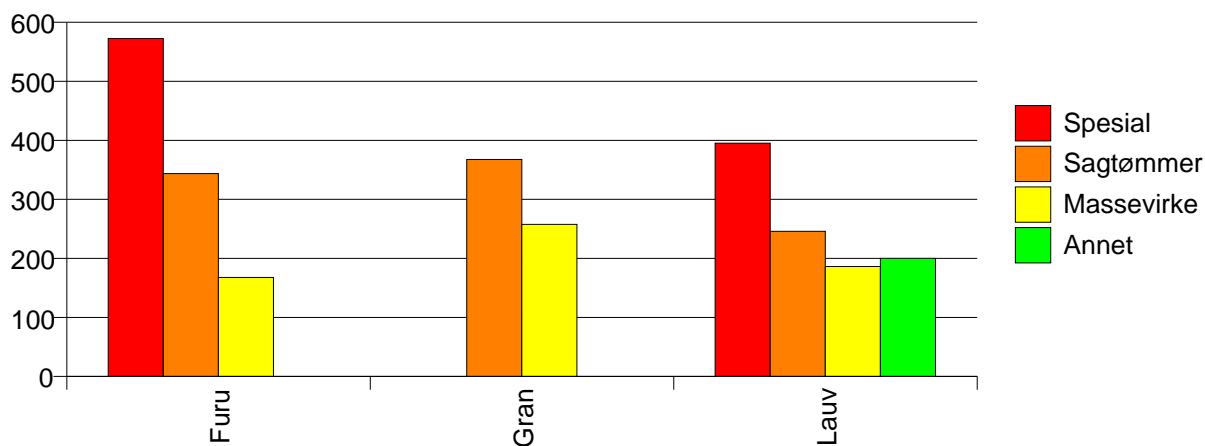
Volum (prosentfordelt)



Gjennomsnittspris 2002 (kr/kbm)

	Spesial	Sagtømmer	Massevirke	Annet	Vrak	Snitt
Furu	573	344	168		0	263
Gran		368	258		0	299
Lauv	395	246	186	200		194
Snitt	550	352	211	200	0	276

Gjennomsnittspris (kr/kbm)

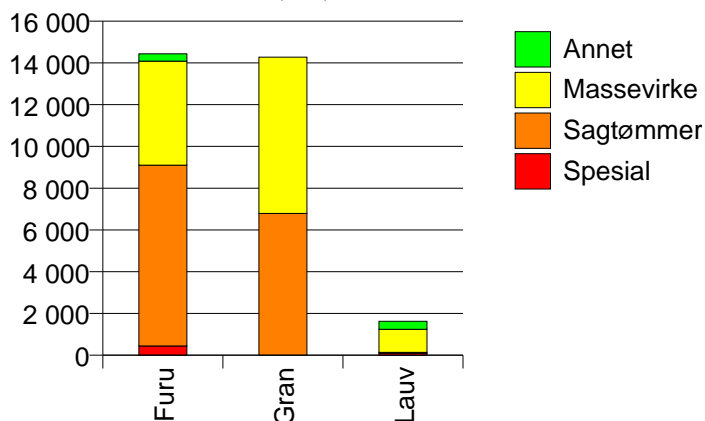


912 VEGÅRSHEI

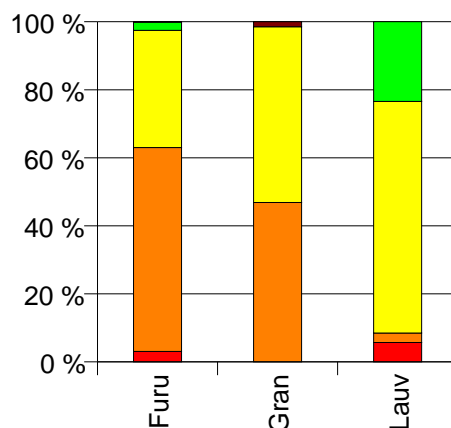
Volum 2002 (kbm)

	Spesial	Sagtømmer	Massevirke	Annet	Vrak	Sum:
Furu	446	8 656	4 978	350	13	14 443
Gran		6 789	7 482		215	14 486
Lauv	93	45	1 107	381		1 626
Sum:	539	15 490	13 567	731	228	30 555

Volum (kbm)



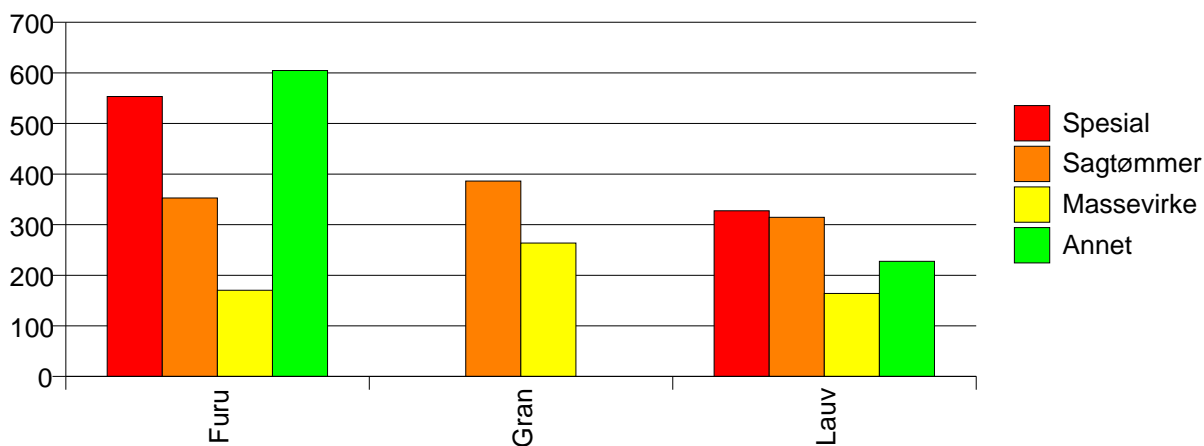
Volum (prosentfordelt)



Gjennomsnittspris 2002 (kr/kbm)

	Spesial	Sagtømmer	Massevirke	Annet	Vrak	Snitt
Furu	553	353	170	605	0	302
Gran		386	264		0	317
Lauv	327	315	164	227		192
Snitt	514	367	221	408	0	303

Gjennomsnittspris (kr/kbm)

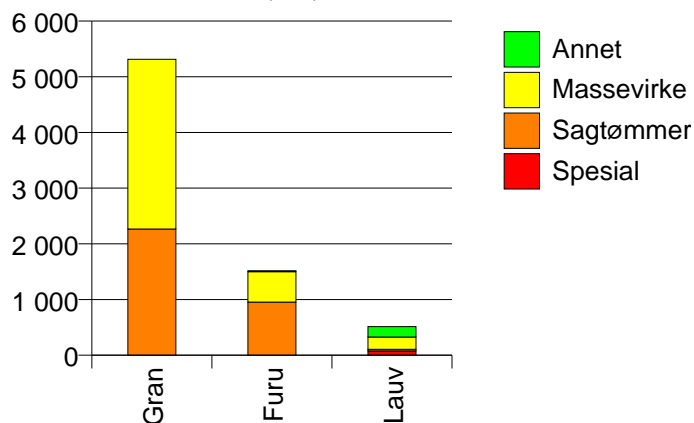


914 TVEDESTRAN

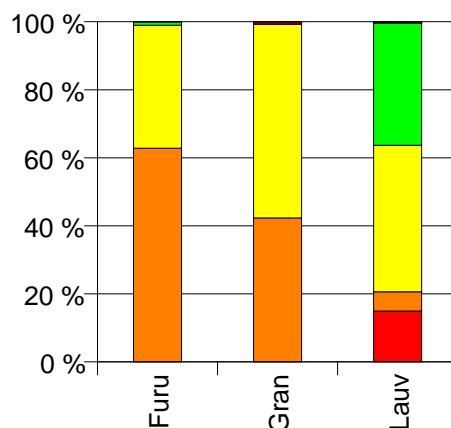
Volum 2002 (kbm)

	Spesial	Sagtømmer	Massevirke	Annet	Vrak	Sum:
Furu		953	548	15	1	1 517
Gran		2 266	3 047		41	5 354
Lauv	77	29	222	185	2	515
Sum:	77	3 248	3 817	200	44	7 386

Volum (kbm)



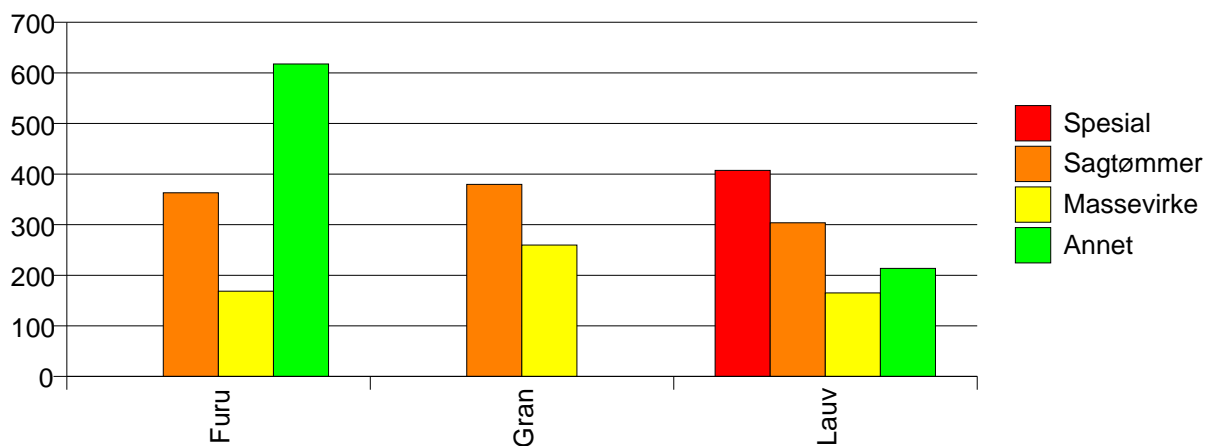
Volum (prosentfordelt)



Gjennomsnittspris 2002 (kr/kbm)

	Spesial	Sagtømmer	Massevirke	Annet	Vrak	Snitt
Furu		363	169	618	0	295
Gran		380	260		0	308
Lauv	407	304	165	214	0	226
Snitt	407	374	241	244	0	300

Gjennomsnittspris (kr/kbm)

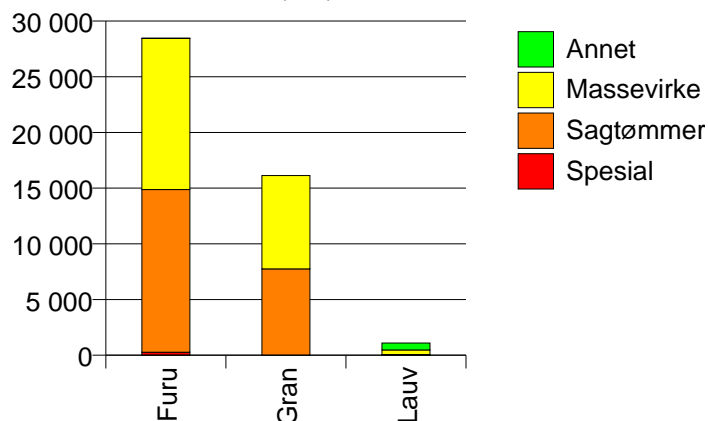


919 FROLAND

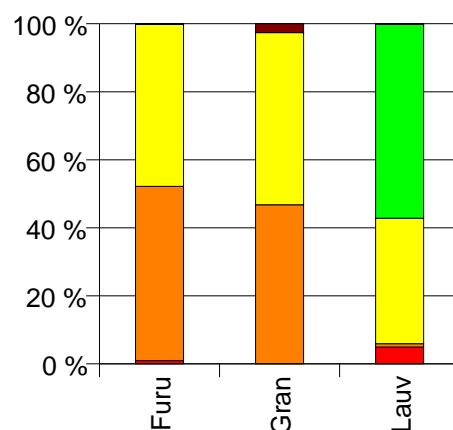
Volum 2002 (kbm)

	Spesial	Sagtømmer	Massevirke	Annet	Vrak	Sum:
Furu	272	14 602	13 564	38	11	28 487
Gran		7 746	8 380		431	16 557
Lauv	54	11	403	623	2	1 093
Sum:	326	22 359	22 347	661	444	46 137

Volum (kbm)



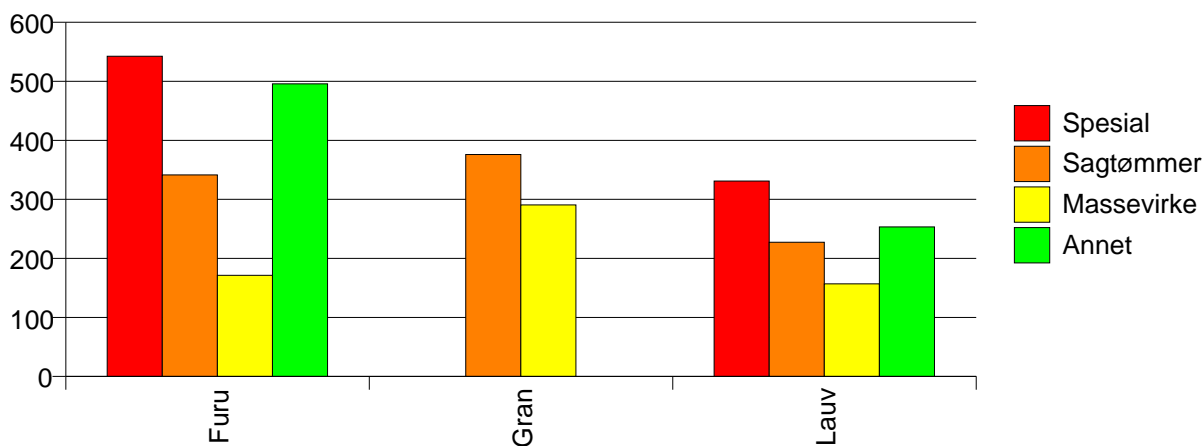
Volum (prosentfordelt)



Gjennomsnittspris 2002 (kr/kbm)

	Spesial	Sagtømmer	Massevirke	Annet	Vrak	Snitt
Furu	542	341	171	496	0	262
Gran		376	291		0	323
Lauv	331	227	157	253	0	221
Snitt	507	353	216	267	0	283

Gjennomsnittspris (kr/kbm)

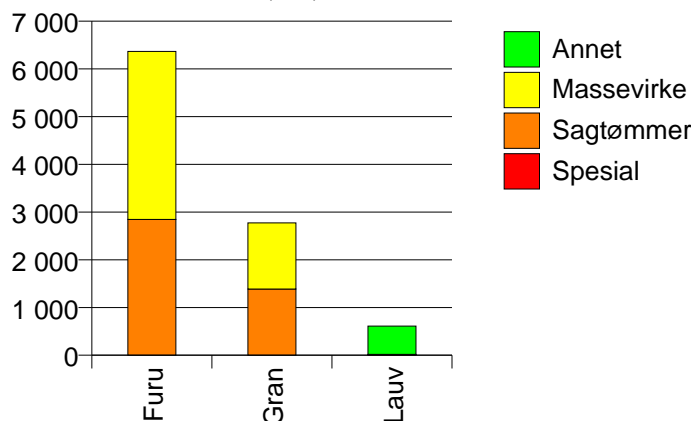


926 LILLESAND

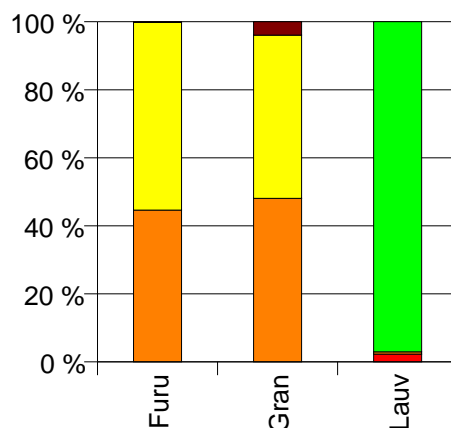
Volum 2002 (kbm)

	Spesial	Sagtømmer	Massevirke	Annet	Vrak	Sum:
Furu		2 846	3 519		13	6 378
Gran		1 388	1 385		114	2 887
Lauv	14	4		592		610
Sum:	14	4 238	4 904	592	127	9 875

Volum (kbm)



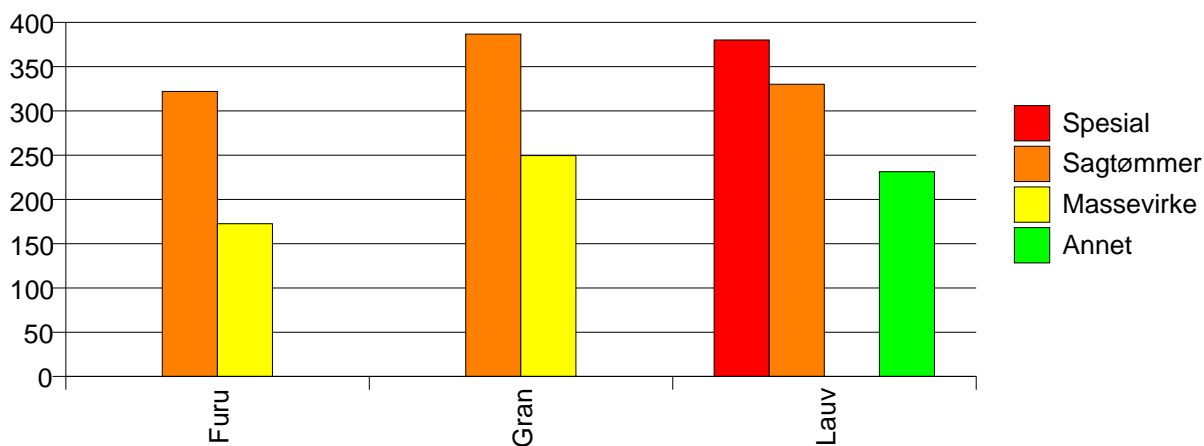
Volum (prosentfordelt)



Gjennomsnittspris 2002 (kr/kbm)

	Spesial	Sagtømmer	Massevirke	Annet	Vrak	Snitt
Furu		322	172		0	239
Gran		387	249		0	306
Lauv	380	330		231		235
Snitt	380	343	194	231	0	258

Gjennomsnittspris (kr/kbm)

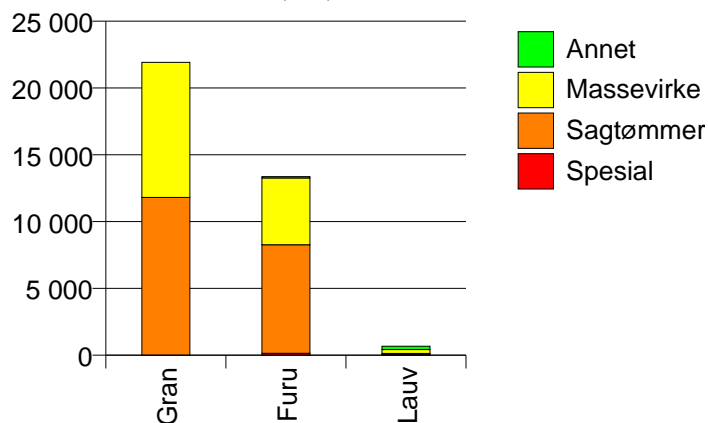


928 BIRKENES

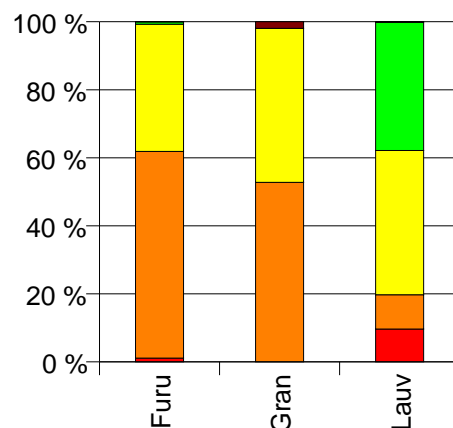
Volum 2002 (kbm)

	Spesial	Sagtømmer	Massevirke	Annet	Vrak	Sum:
Furu	147	8 120	5 000	94	3	13 364
Gran		11 802	10 115		436	22 353
Lauv	65	68	286	254	1	674
Sum:	212	19 990	15 401	348	440	36 391

Volum (kbm)



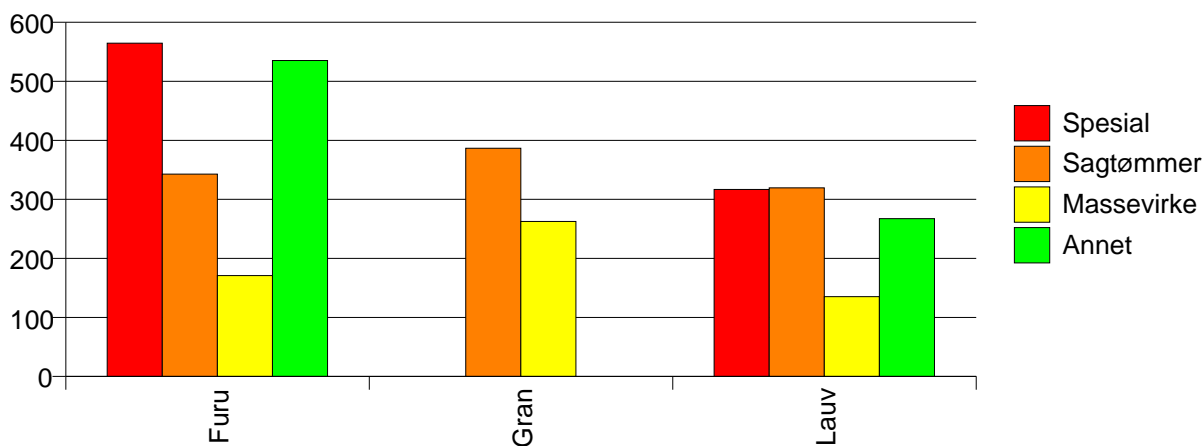
Volum (prosentfordelt)



Gjennomsnittspris 2002 (kr/kbm)

	Spesial	Sagtømmer	Massevirke	Annet	Vrak	Snitt
Furu	565	343	171	535	0	282
Gran		387	263		0	323
Lauv	317	320	135	267	0	221
Snitt	489	369	231	340	0	306

Gjennomsnittspris (kr/kbm)

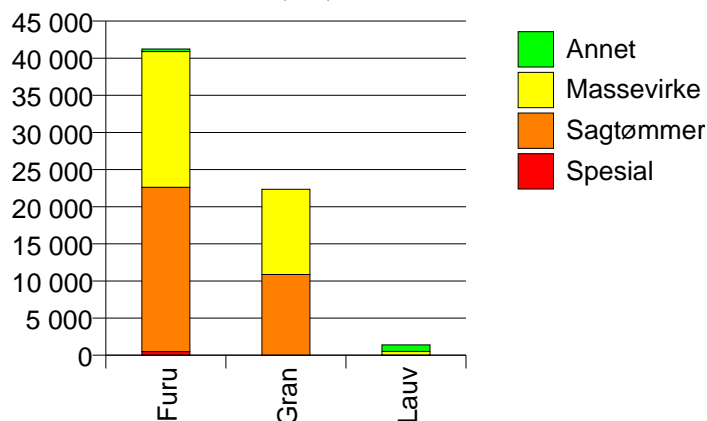


929 ÅMLI

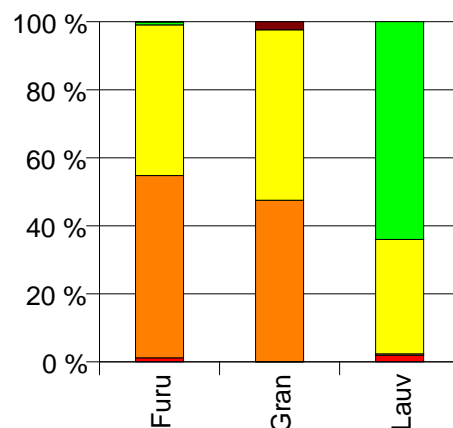
Volum 2002 (kbm)

	Spesial	Sagtømmer	Massevirke	Annet	Vrak	Sum:
Furu	499	22 112	18 281	352	22	41 266
Gran	12	10 867	11 474		543	22 896
Lauv	27	6	471	896		1 400
Sum:	538	32 985	30 226	1 248	565	65 562

Volum (kbm)



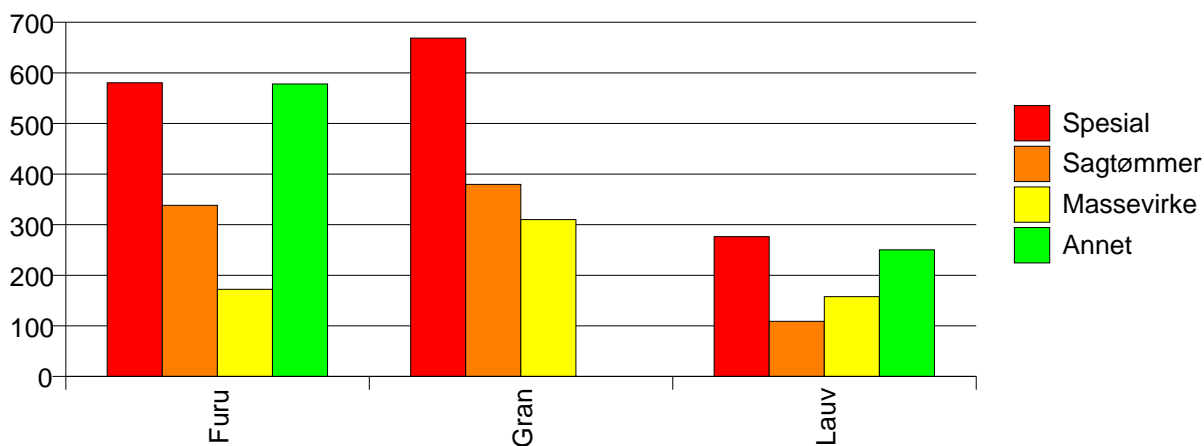
Volum (prosentfordelt)



Gjennomsnittspris 2002 (kr/kbm)

	Spesial	Sagtømmer	Massevirke	Annet	Vrak	Snitt
Furu	580	338	172	578	0	269
Gran	669	380	310		0	336
Lauv	276	109	158	250		219
Snitt	567	352	224	343	0	292

Gjennomsnittspris (kr/kbm)

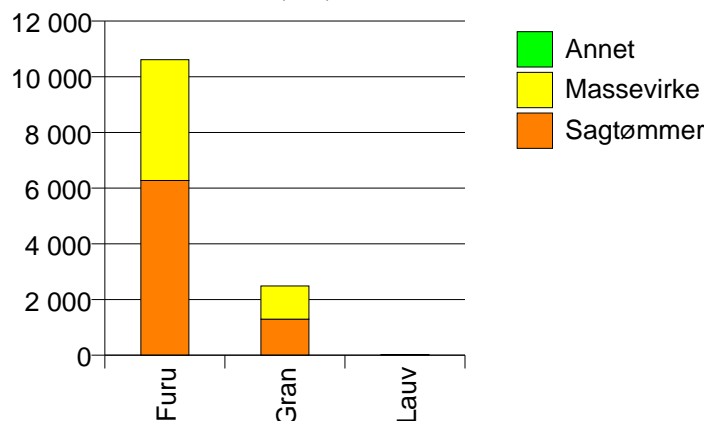


935 IVELAND

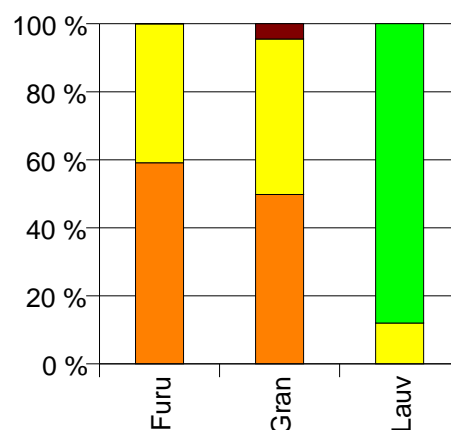
Volum 2002 (kbm)

	Sagtømmer	Massevirke	Annet	Vrak	Sum:
Furu	6 277	4 335		1	10 613
Gran	1 296	1 190		117	2 603
Lauv		3	22		25
Sum:	7 573	5 528	22	118	13 241

Volum (kbm)



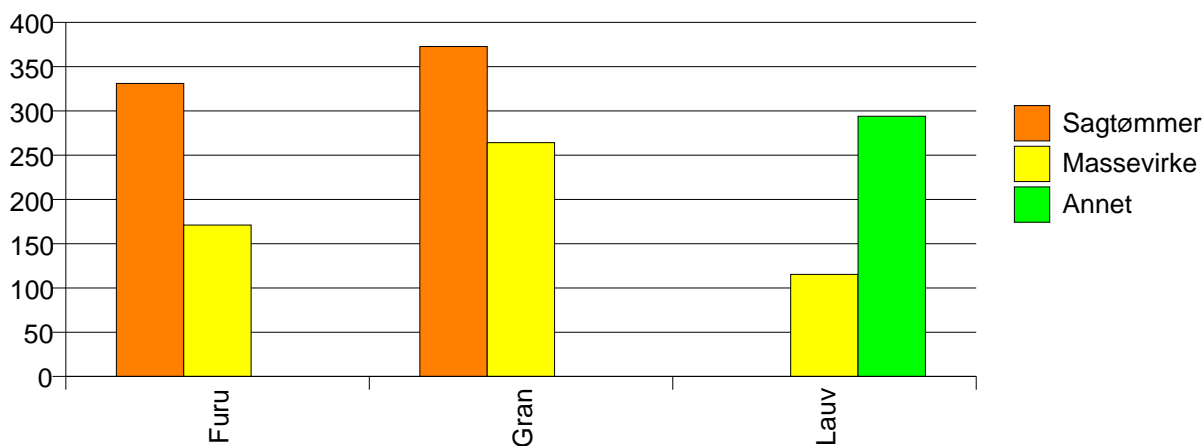
Volum (prosentfordelt)



Gjennomsnittspris 2002 (kr/kbm)

	Sagtømmer	Massevirke	Annet	Vrak	Snitt
Furu	331	171		0	266
Gran	373	264		0	306
Lauv		115	294		272
Snitt	338	191	294	0	274

Gjennomsnittspris (kr/kbm)

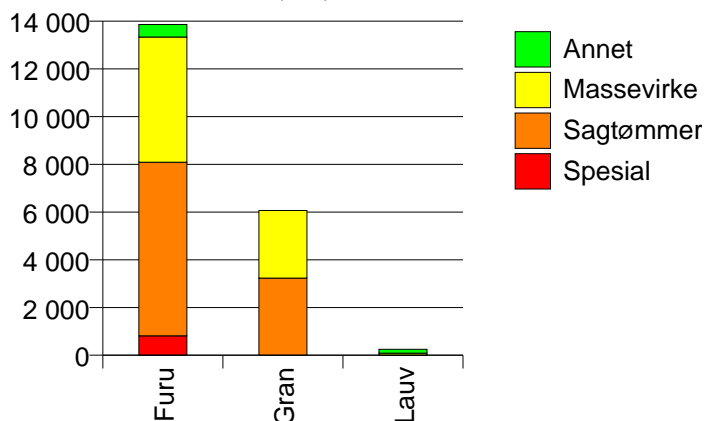


937 EVJE OG HO

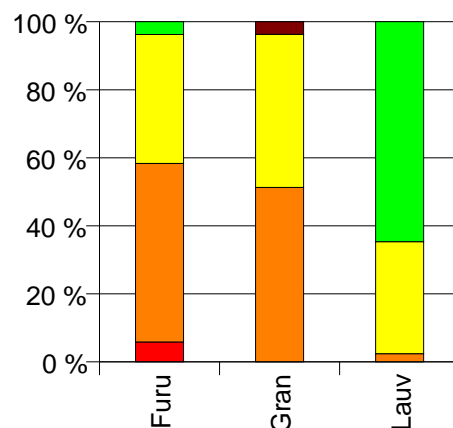
Volum 2002 (kbm)

	Spesial	Sagtømmer	Massevirke	Annet	Vrak	Sum:
Furu	813	7 271	5 251	520		13 855
Gran		3 231	2 833		234	6 298
Lauv		6	82	161		249
Sum:	813	10 508	8 166	681	234	20 402

Volum (kbm)



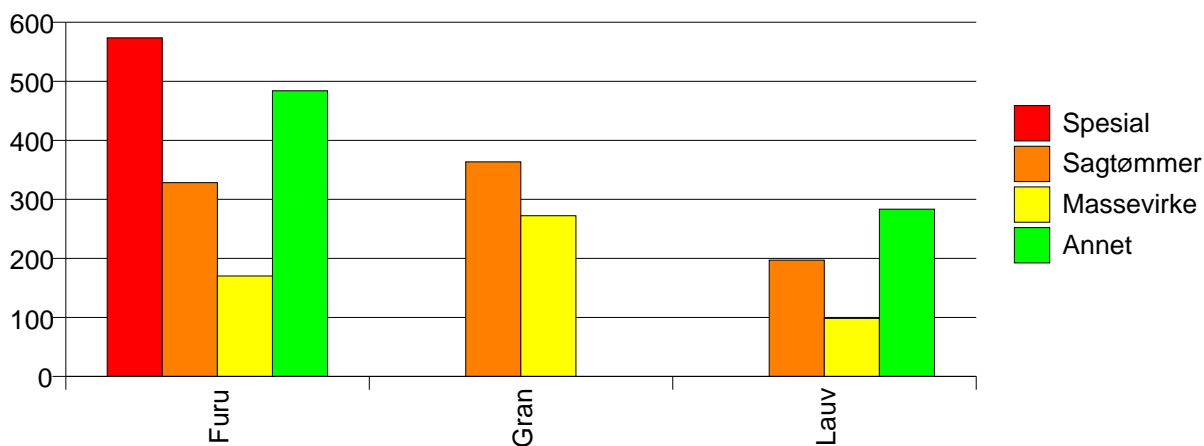
Volum (prosentfordelt)



Gjennomsnittspris 2002 (kr/kbm)

	Spesial	Sagtømmer	Massevirke	Annet	Vrak	Snitt
Furu	574	328	170	484		289
Gran		364	272		0	309
Lauv		197	98	283		220
Snitt	574	339	205	437	0	294

Gjennomsnittspris (kr/kbm)

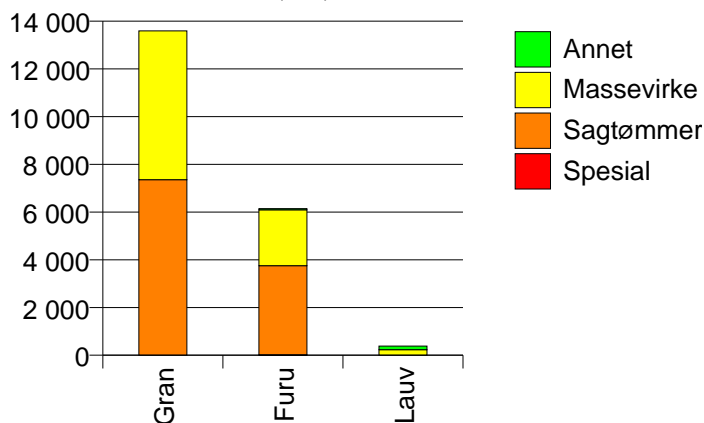


938 BYGLAND

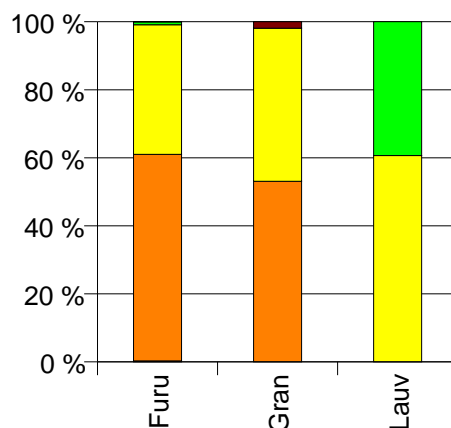
Volum 2002 (kbm)

	Spesial	Sagtømmer	Massevirke	Annet	Vrak	Sum:
Furu	18	3 733	2 340	54	1	6 146
Gran		7 355	6 234		262	13 851
Lauv			233	151		384
Sum:	18	11 088	8 807	205	263	20 381

Volum (kbm)



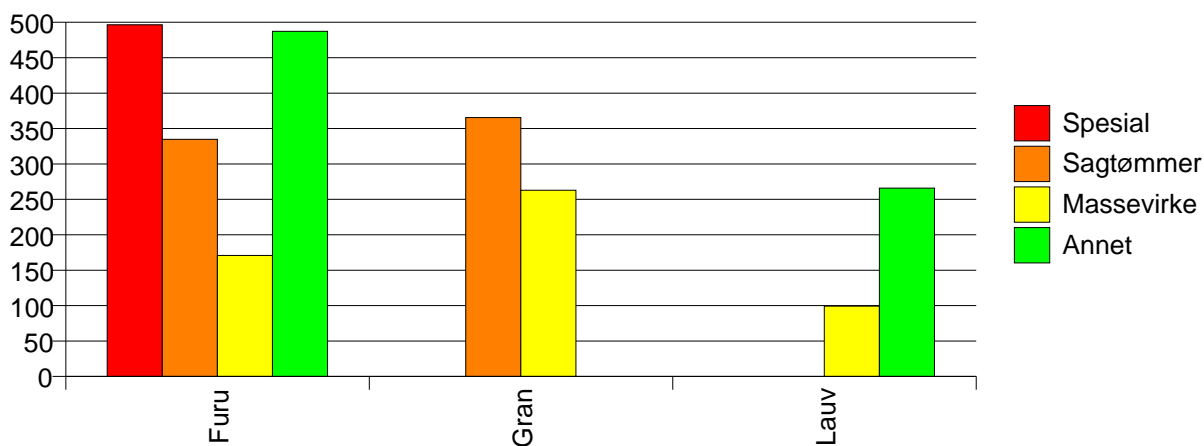
Volum (prosentfordelt)



Gjennomsnittspris 2002 (kr/kbm)

	Spesial	Sagtømmer	Massevirke	Annet	Vrak	Snitt
Furu	497	335	171	487	0	274
Gran		365	263		0	312
Lauv			99	266		165
Snitt	497	355	234	324	0	298

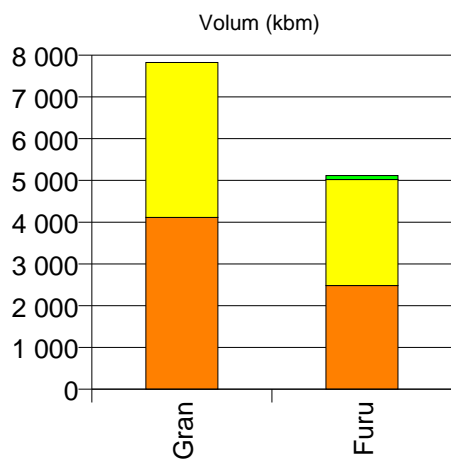
Gjennomsnittspris (kr/kbm)



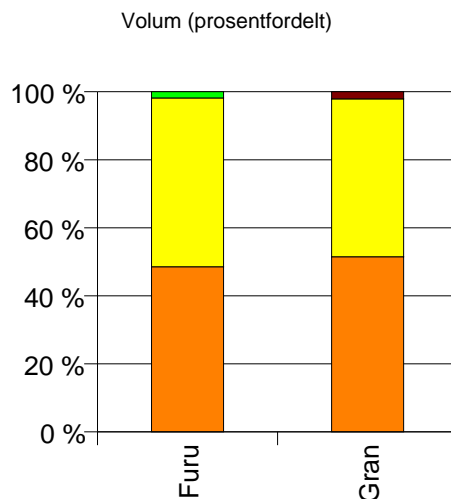
940 VALLE

Volum 2002 (kbm)

	Sagtømmer	Massevirke	Annet	Vrak	Sum:
Furu	2 483	2 538	94		5 115
Gran	4 112	3 711		166	7 989
Sum:	6 595	6 249	94	166	13 104

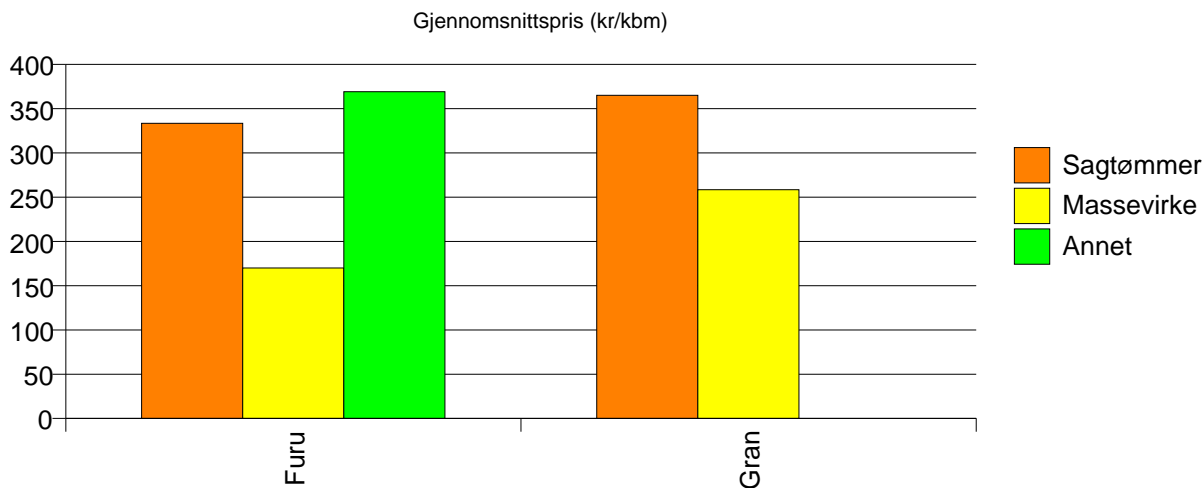


■ Annet
■ Massevirke
■ Sagtømmer



Gjennomsnittspris 2002 (kr/kbm)

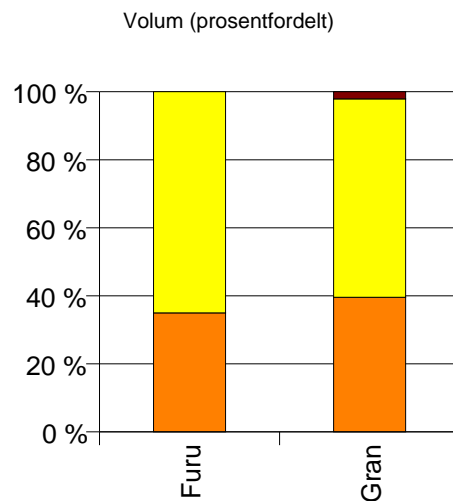
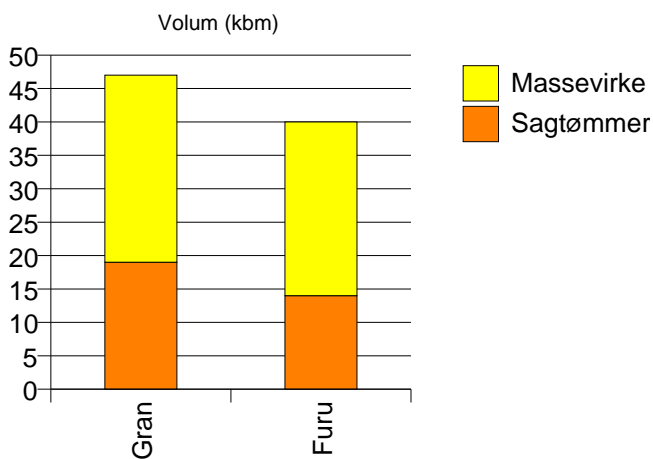
	Sagtømmer	Massevirke	Annet	Vrak	Snitt
Furu	333	170	369		253
Gran	365	258		0	308
Snitt	353	222	369	0	286



941 BYKLE

Volum 2002 (kbm)

	Sagtømmer	Massevirke	Vrak	Sum:
Furu	14	26		40
Gran	19	28	1	48
Sum:	33	54	1	88



Gjennomsnittspris 2002 (kr/kbm)

	Sagtømmer	Massevirke	Vrak	Snitt
Furu	343	173		232
Gran	283	280	0	275
Snitt	309	228	0	256

